

Data File : BM010648.D

Acq On : 22 Jun 2017 06:14

Operator : SJ/JU

Sample : SSTDCCC020EC

Misc :

ALS Vial : 2 Sample Multiplier: 1

Instrument :
BNA_M
ClientSampleId :
SSTD02042

Quant Time: Jun 22 06:56:01 2017

Quant Method : Z:\HPCHEM1\BNA_M\METHODS\SOM-EPA-BM062017.M

Quant Title : SVOA CALIBRATION

QLast Update : Thu Jun 22 01:38:18 2017

Response via : Initial Calibration

Internal Standards	R.T.	QIon	Response	Conc	Units	Dev(Min)
1) 1,4-Dichlorobenzene-d4	7.46	152	57741	20.00	ng/ul	0.00
18) Naphthalene-d8	10.23	136	275976	20.00	ng/ul	0.00
35) Acenaphthene-d10	14.12	164	199243	20.00	ng/ul	0.00
61) Phenanthrene-d10	16.87	188	513440	20.00	ng/ul	0.00
75) Chrysene-d12	21.09	240	610696	20.00	ng/ul	0.00
83) Perylene-d12	23.22	264	496194	20.00	ng/ul	0.00

System Monitoring Compounds

3) 1,4-Dioxane-d8	3.08	96	9481	9.41	ng/uL	0.00
5) Phenol-d5	6.65	99	100135	18.21	ng/ul	0.00
7) Bis-(2-Chloroethyl)ether-d	6.82	67	55312	17.62	ng/ul	0.00
9) 2-Chlorophenol-d4	7.00	132	78021	20.22	ng/ul	0.00
13) 4-Methylphenol-d8	8.17	113	90517	19.85	ng/ul	0.00
19) Nitrobenzene-d5	8.60	128	39106	19.86	ng/ul	0.00
22) 2-Nitrophenol-d4	9.32	143	47065	20.75	ng/ul	0.00
26) 2,4-Dichlorophenol-d3	9.85	165	95559	20.01	ng/ul	0.00
29) 4-Chloroaniline-d4	10.37	131	114639	22.78	ng/ul	0.00
43) Dimethylphthalate-d6	13.53	166	347340	19.86	ng/ul	0.00
46) Acenaphthylene-d8	13.80	160	399369	19.63	ng/ul	0.00
51) 4-Nitrophenol-d4	14.33	143	57783	18.77	ng/ul	0.00
57) Fluorene-d10	15.12	176	304915	20.17	ng/ul	0.00
62) 4,6-Dinitro-2-methylphenol	15.24	200	65892	20.90	ng/ul	0.00
70) Anthracene-d10	16.87	188	513440	20.71	ng/ul	-0.10
76) Pyrene-d10	19.27	212	574458	20.25	ng/ul	0.00
87) Benzo(a)pyrene-d12	23.09	264	497389	20.74	ng/ul	0.00

Target Compounds

					Qvalue
2) 1,4-Dioxane	3.10	88	9648	8.57	ng/uL# 56
4) Benzaldehyde	6.62	77	73499	22.70	ng/ul 96
6) Phenol	6.67	94	105723	18.66	ng/ul 95
8) Bis(2-Chloroethyl)ether	6.90	93	75710	18.36	ng/ul 97
10) 2-Chlorophenol	7.03	128	76191	19.75	ng/ul 98
11) 2-Methylphenol	7.90	108	83138	19.25	ng/ul 97
12) 2,2'-oxybis(1-Chloropropan	8.00	45	51288	17.81	ng/ul 97
14) Acetophenone	8.28	105	143189	19.23	ng/ul 88
15) N-Nitroso-di-n-propylamine	8.27	70	73691	18.37	ng/ul 95
16) 4-Methylphenol	8.23	108	88769	18.68	ng/ul 87
17) Hexachloroethane	8.52	117	36622	21.35	ng/ul# 85
20) Nitrobenzene	8.65	77	113871	19.82	ng/ul 97
21) Isophorone	9.17	82	205575	18.00	ng/ul 99
23) 2-Nitrophenol	9.35	139	51323	21.33	ng/ul 96
24) 2,4-Dimethylphenol	9.42	107	124012	20.26	ng/ul 98
25) Bis(2-Chloroethoxy)methane	9.66	93	116640	18.42	ng/ul 97
27) 2,4-Dichlorophenol	9.87	162	93200	20.05	ng/ul# 86
28) Naphthalene	10.27	128	267766	19.50	ng/ul 99
30) 4-Chloroaniline	10.39	127	112386	22.21	ng/ul 95
31) Hexachlorobutadiene	10.57	225	74688	21.30	ng/ul# 91
32) Caprolactam	11.16	113	21150	12.96	ng/ul# 82
33) 4-Chloro-3-methylphenol	11.52	107	116259	19.61	ng/ul 96
34) 2-Methylnaphthalene	11.90	142	219791	19.91	ng/ul 96

Data File : BM010648.D

Acq On : 22 Jun 2017 06:14

Operator : SJ/JU

Sample : SSTDCCC020EC

Misc :

ALS Vial : 2 Sample Multiplier: 1

Instrument :
BNA_M
ClientSampleId :
SSTD02042

Quant Time: Jun 22 06:56:01 2017

Quant Method : Z:\HPCHEM1\BNA_M\METHODS\SOM-EPA-BM062017.M

Quant Title : SVOA CALIBRATION

QLast Update : Thu Jun 22 01:38:18 2017

Response via : Initial Calibration

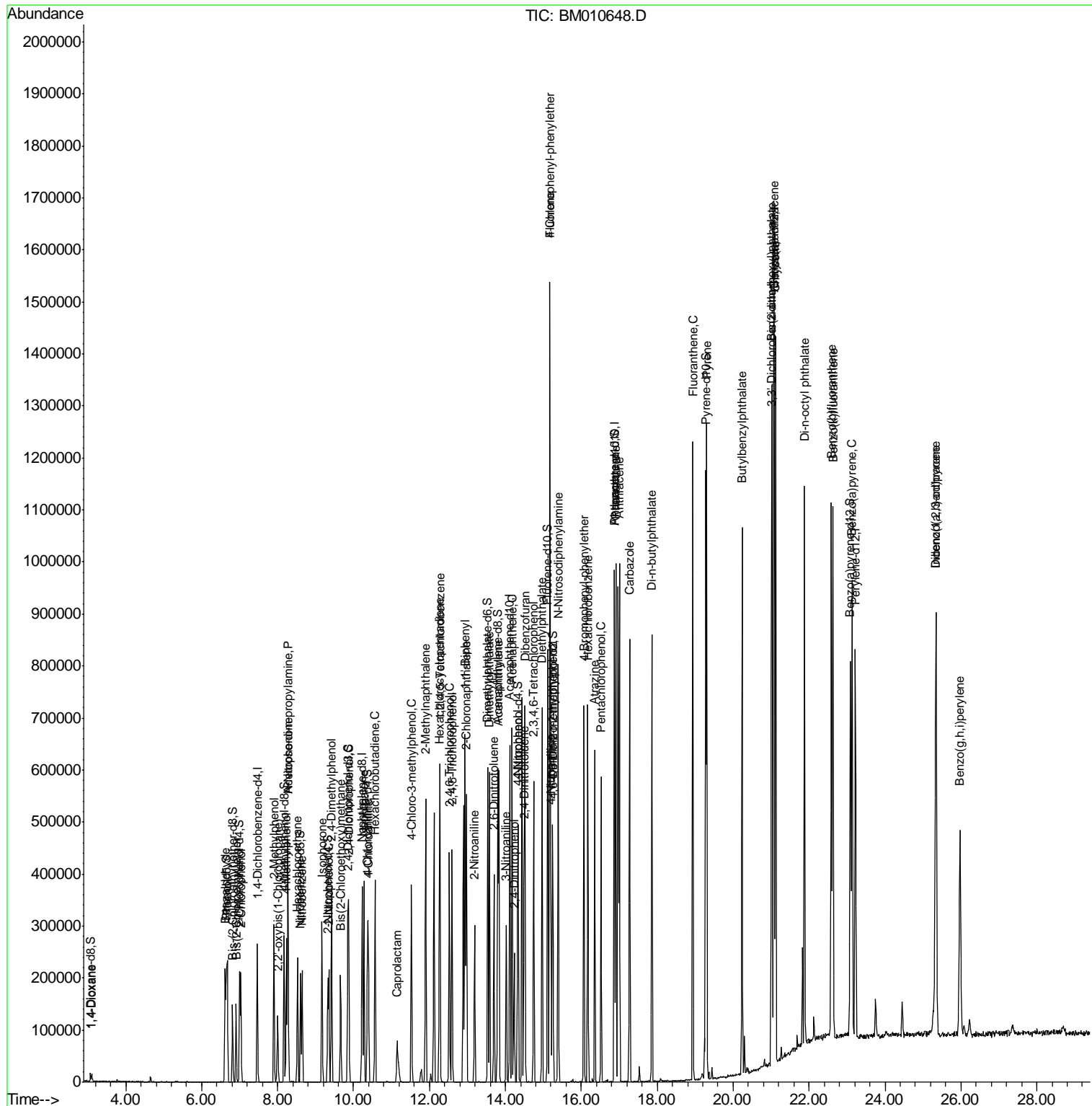
Internal Standards	R.T.	QIon	Response	Conc	Units	Dev(Min)
36) 1,2,4,5-Tetrachlorobenzene	12.27	216	142151	20.22	ng/ul#	95
37) Hexachlorocyclopentadiene	12.26	237	80232	19.85	ng/ul	91
38) 2,4,6-Trichlorophenol	12.53	196	97237	20.25	ng/ul	99
39) 2,4,5-Trichlorophenol	12.59	196	100174	20.20	ng/ul	97
40) 1,1'-Biphenyl	12.94	154	303112	19.46	ng/ul	99
41) 2-Chloronaphthalene	12.97	162	238483	19.46	ng/ul	94
42) 2-Nitroaniline	13.19	65	72737	20.29	ng/ul	94
44) Dimethylphthalate	13.59	163	333310	19.44	ng/ul	100
45) 2,6-Dinitrotoluene	13.70	165	64906	21.86	ng/ul#	81
47) Acenaphthylene	13.83	152	380081	19.61	ng/ul	99
48) 3-Nitroaniline	14.02	138	63146	21.08	ng/ul	97
49) Acenaphthene	14.18	153	250852	19.19	ng/ul	98
50) 2,4-Dinitrophenol	14.23	184	44831	20.84	ng/ul#	83
52) 4-Nitrophenol	14.35	109	90770	23.24	ng/ul#	80
53) Dibenzofuran	14.52	168	389678	19.69	ng/ul	90
54) 2,4-Dinitrotoluene	14.49	165	95424	20.71	ng/ul	95
55) 2,3,4,6-Tetrachlorophenol	14.74	232	101463	20.23	ng/ul#	88
56) Diethylphthalate	14.97	149	351702	19.50	ng/ul	97
58) Fluorene	15.17	166	325508	19.64	ng/ul	99
59) 4-Chlorophenyl-phenylether	15.17	204	177986	19.76	ng/ul	91
60) 4-Nitroaniline	15.20	138	70418	19.91	ng/ul	93
63) 4,6-Dinitro-2-methylphenol	15.26	198	68542	20.40	ng/ul#	97
64) N-Nitrosodiphenylamine	15.39	169	281007	19.73	ng/ul	97
65) 4-Bromophenyl-phenylether	16.07	248	116215	19.77	ng/ul#	88
66) Hexachlorobenzene	16.17	284	123285	19.91	ng/ul#	78
67) Atrazine	16.36	200	124985	20.83	ng/ul	96
68) Pentachlorophenol	16.52	266	82288	18.85	ng/ul	95
69) Phenanthrene	16.91	178	539980	19.78	ng/ul	99
71) Anthracene	17.00	178	565126	20.10	ng/ul	99
72) Carbazole	17.27	167	472680	19.27	ng/ul#	96
73) Di-n-butylphthalate	17.86	149	602511	19.31	ng/ul	99
74) Fluoranthene	18.94	202	694230	19.73	ng/ul#	96
77) Pyrene	19.30	202	708166	20.08	ng/ul#	98
78) Butylbenzylphthalate	20.24	149	279163	21.05	ng/ul	99
79) 3,3'-Dichlorobenzidine	21.01	252	252130	20.64	ng/ul#	96
80) Benzo(a)anthracene	21.07	228	709704	19.96	ng/ul	99
81) Bis(2-ethylhexyl)phthalate	21.03	149	402401	19.89	ng/ul#	99
82) Chrysene	21.12	228	643459	20.29	ng/ul	99
84) Di-n-octyl phthalate	21.88	149	679018	19.58	ng/ul	96
85) Benzo(b)fluoranthene	22.59	252	676436	21.00	ng/ul#	99
86) Benzo(k)fluoranthene	22.63	252	630188	20.64	ng/ul#	98
88) Benzo(a)pyrene	23.13	252	600366	20.25	ng/ul	97
89) Indeno(1,2,3-cd)pyrene	25.34	276	586918	19.08	ng/ul	97
90) Dibenzo(a,h)anthracene	25.35	278	491666	19.18	ng/ul#	98
91) Benzo(g,h,i)perylene	25.98	276	458854	18.74	ng/ul	97

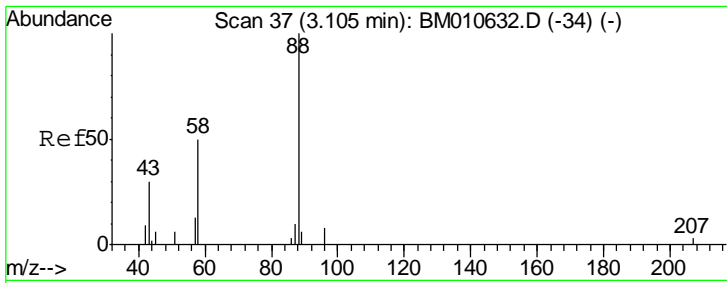
(#) = qualifier out of range (m) = manual integration (+) = signals summed

Data File : BM010648.D
Acq On : 22 Jun 2017 06:14
Operator : SJ/JU
Sample : SSTDCCC020EC
Misc :
ALS Vial : 2 Sample Multiplier: 1

Instrument :
BNA_M
Client Sampled :
SSTD02042

Quant Time: Jun 22 06:56:01 2017
Quant Method : Z:\HPCHEM1\BNA_M\METHODS\SOM-EPA-BM062017.M
Quant Title : SVOA CALIBRATION
QLast Update : Thu Jun 22 01:38:18 2017
Response via : Initial Calibration

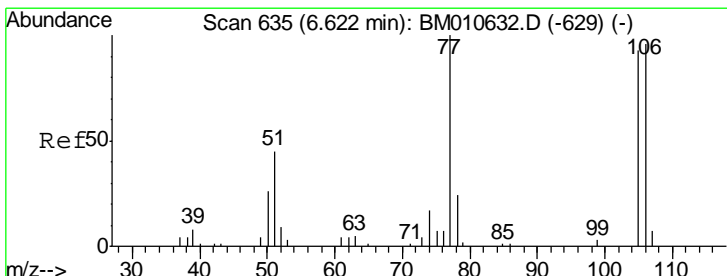
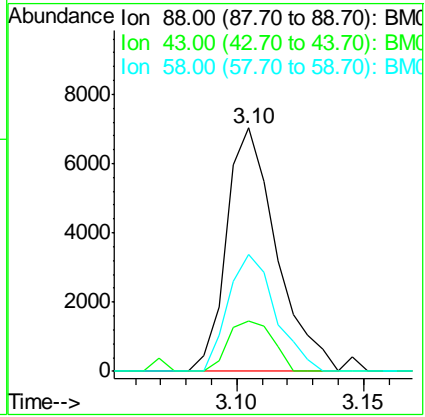
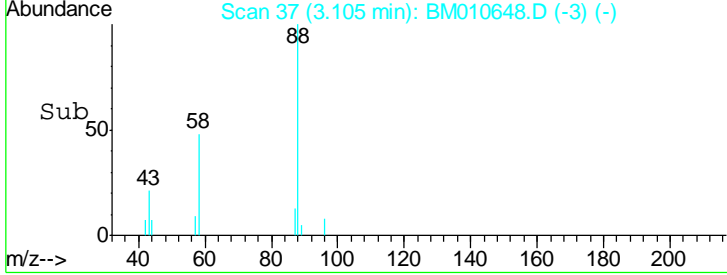
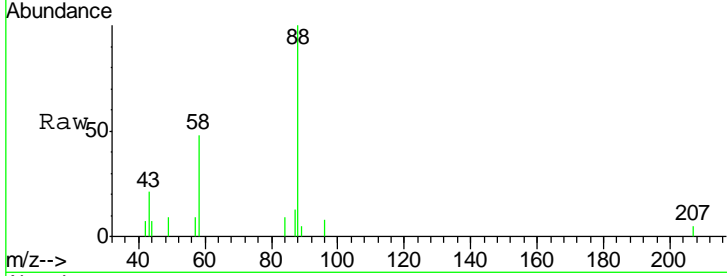




#2
 1,4-Dioxane
 Concen: 8.57 ng/uL
 RT: 3.10 min Scan# 37
 Delta R.T. -0.00 min
 Lab File: BM010648.D
 Acq: 22 Jun 2017 06:14

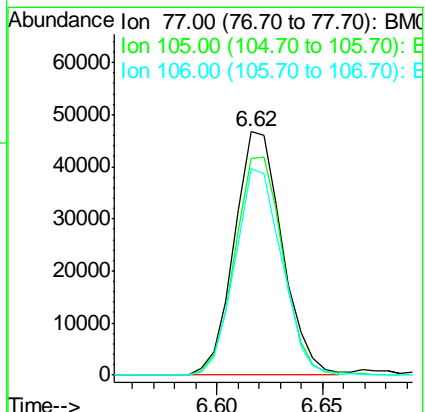
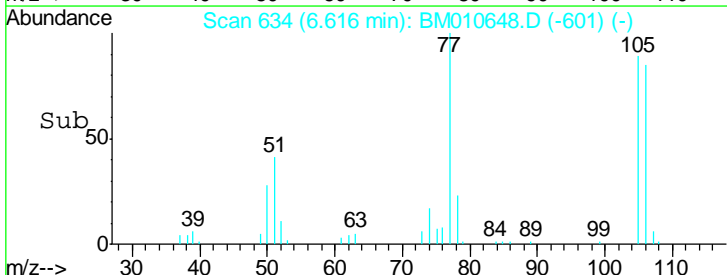
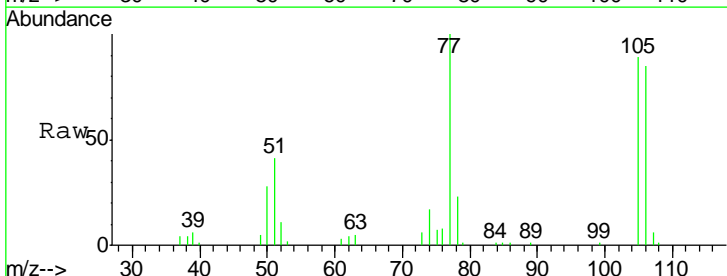
Instrument :
 BNA_M
ClientSampleId :
 SSTD02042

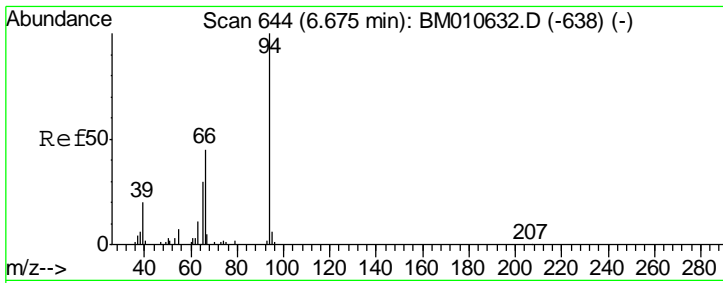
Tgt Ion	Resp	Lower	Upper
88	100		
43	18.5	1.1	1.7#
58	45.5	0.0	0.0#



#4
 Benzaldehyde
 Concen: 22.70 ng/uL
 RT: 6.62 min Scan# 634
 Delta R.T. -0.01 min
 Lab File: BM010648.D
 Acq: 22 Jun 2017 06:14

Tgt Ion	Resp	Lower	Upper
77	100		
105	89.2	66.1	99.1
106	84.8	67.8	101.6

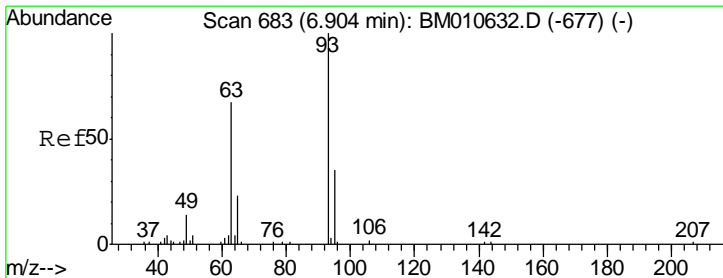
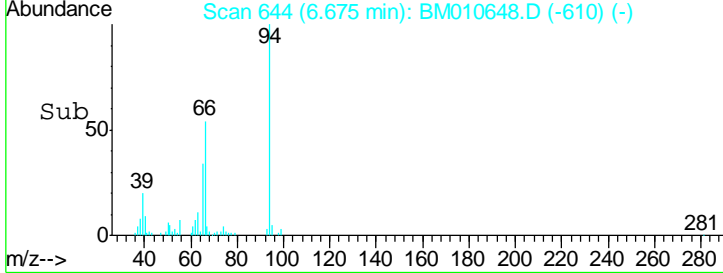
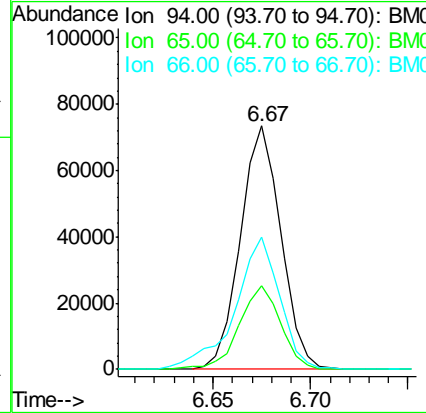
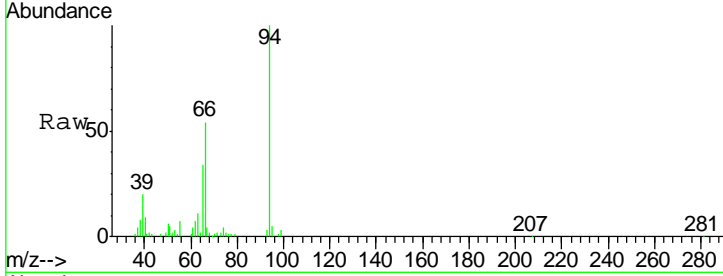




#6
 Phenol
 Concen: 18.66 ng/ul
 RT: 6.67 min Scan# 644
 Delta R.T. -0.00 min
 Lab File: BM010648.D
 Acq: 22 Jun 2017 06:14

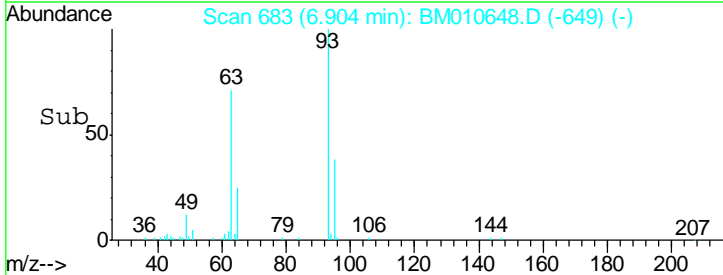
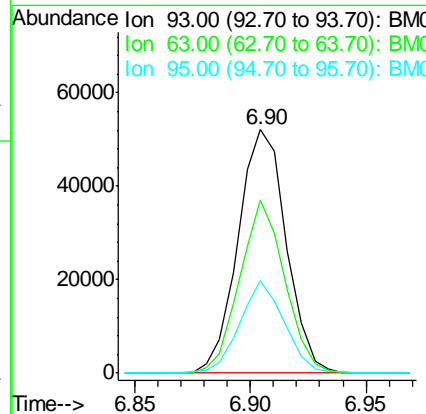
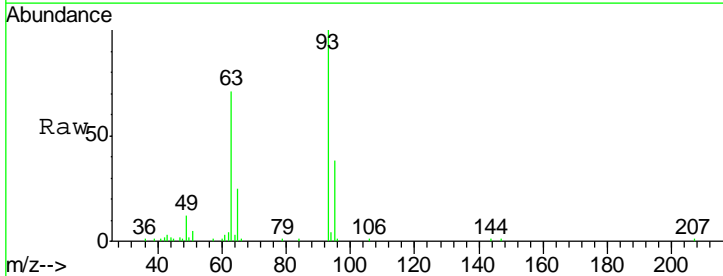
Instrument :
 BNA_M
 ClientSampled :
 SSTD02042

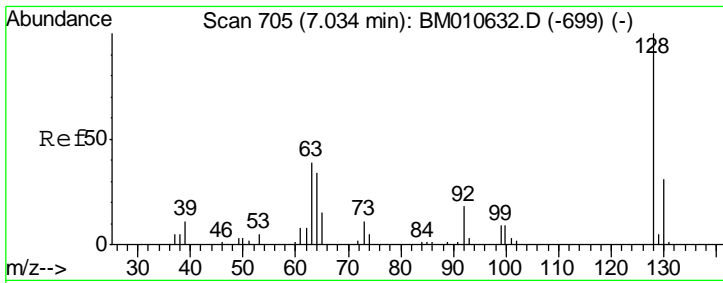
Tgt Ion	Resp	Lower	Upper
94	105723		
65	34.2	28.2	42.4
66	54.5	47.2	70.8



#8
 Bis(2-Chloroethyl)ether
 Concen: 18.36 ng/ul
 RT: 6.90 min Scan# 683
 Delta R.T. -0.00 min
 Lab File: BM010648.D
 Acq: 22 Jun 2017 06:14

Tgt Ion	Resp	Lower	Upper
93	75710		
63	71.4	57.3	85.9
95	38.2	26.6	39.8

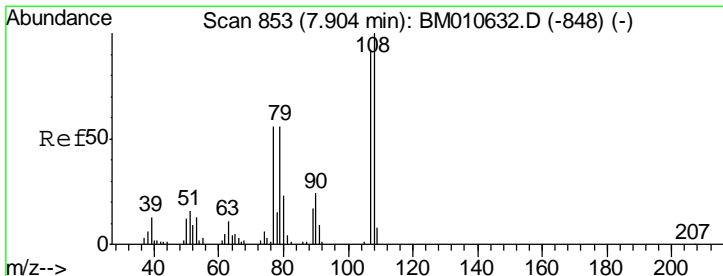
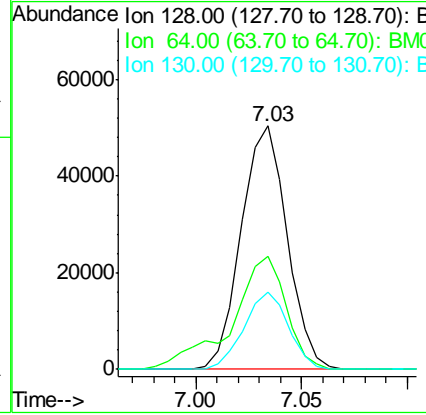
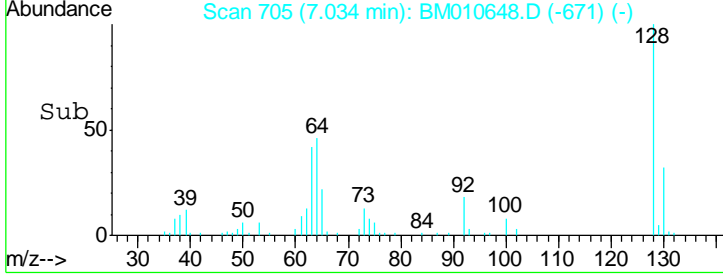
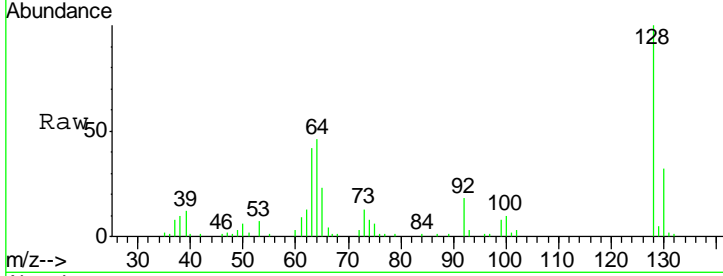




#10
 2-Chlorophenol
 Concen: 19.75 ng/ul
 RT: 7.03 min Scan# 705
 Delta R.T. -0.00 min
 Lab File: BM010648.D
 Acq: 22 Jun 2017 06:14

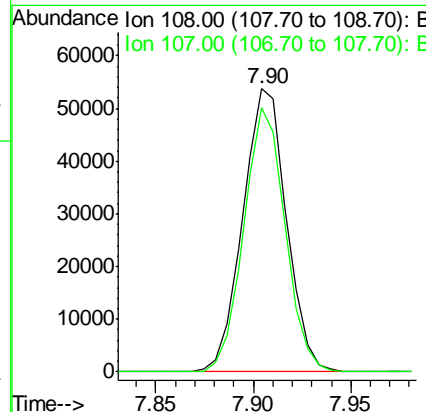
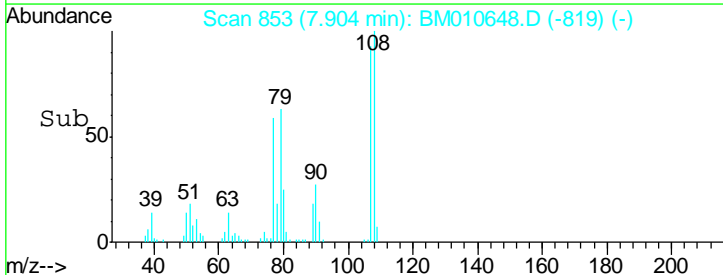
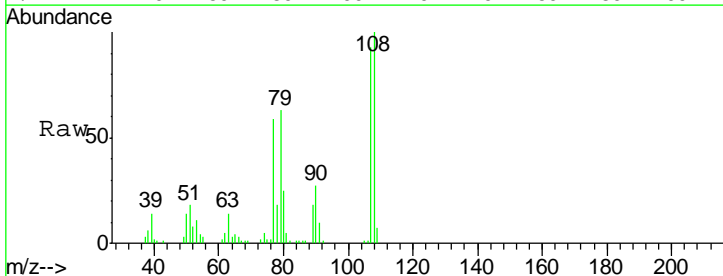
Instrument :
 BNA_M
ClientSampled :
 SSTD02042

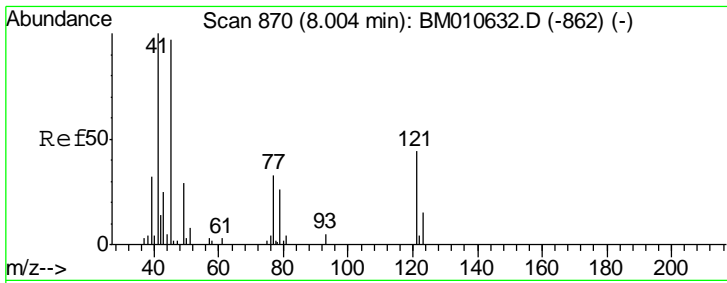
Tgt Ion	Resp	Lower	Upper
128	76191		
64	46.2	38.0	57.0
130	31.5	24.4	36.6



#11
 2-Methylphenol
 Concen: 19.25 ng/ul
 RT: 7.90 min Scan# 853
 Delta R.T. -0.00 min
 Lab File: BM010648.D
 Acq: 22 Jun 2017 06:14

Tgt Ion	Resp	Lower	Upper
108	83138		
107	93.1	72.6	108.8

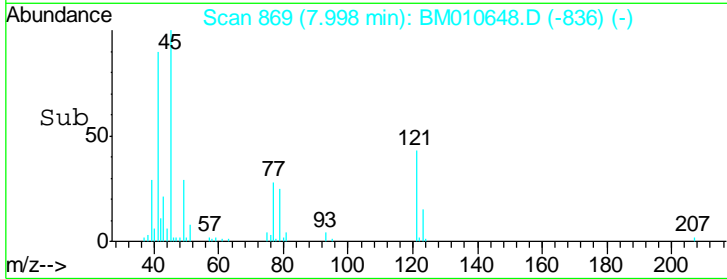
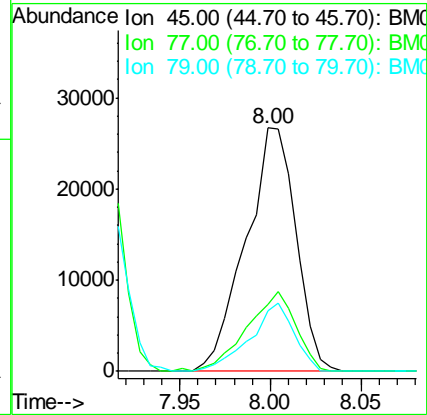
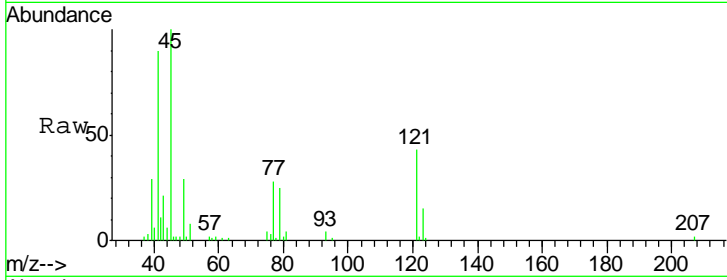




#12
 2,2'-oxybis(1-Chloropropane)
 Concen: 17.81 ng/ul
 RT: 8.00 min Scan# 869
 Delta R.T. -0.01 min
 Lab File: BM010648.D
 Acq: 22 Jun 2017 06:14

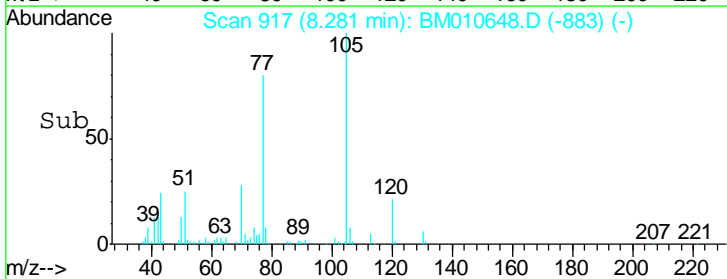
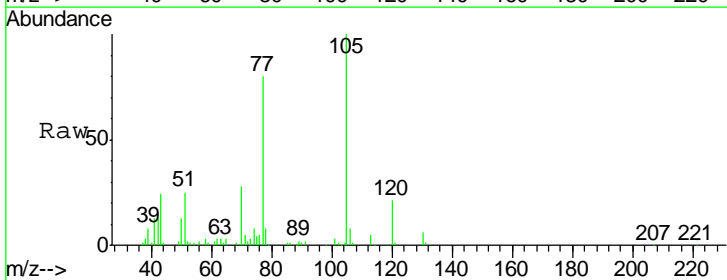
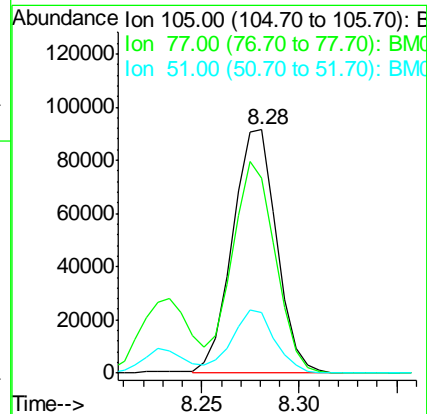
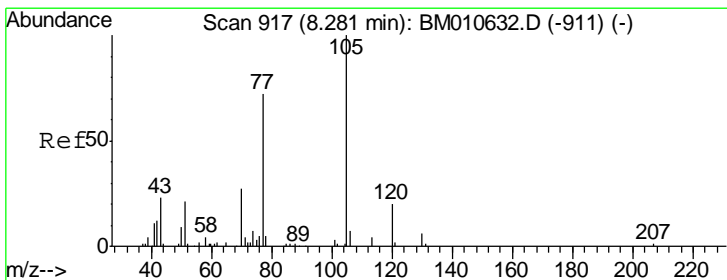
Instrument :
 BNA_M
 ClientSampled :
 SSTD02042

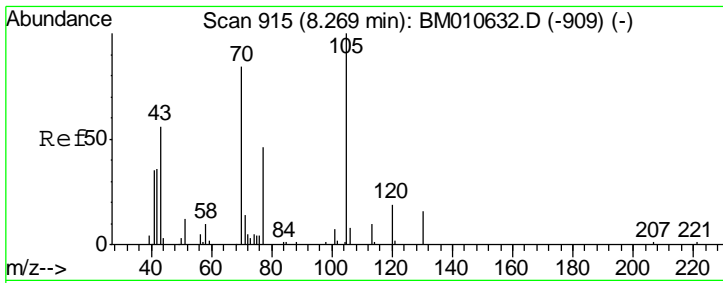
Tgt Ion	Resp	Lower	Upper
45	100		
77	27.7	21.8	32.6
79	25.0	17.6	26.4



#14
 Acetophenone
 Concen: 19.23 ng/ul
 RT: 8.28 min Scan# 917
 Delta R.T. -0.00 min
 Lab File: BM010648.D
 Acq: 22 Jun 2017 06:14

Tgt Ion	Resp	Lower	Upper
105	100		
77	80.0	74.2	111.4
51	24.9	23.4	35.2

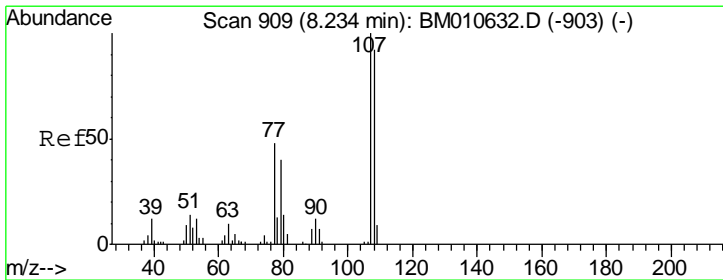
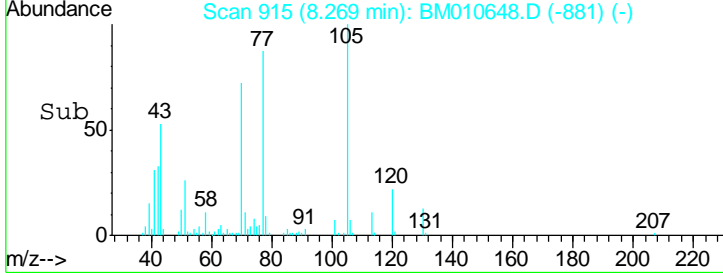
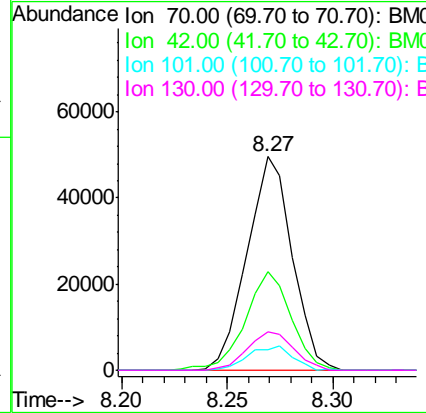
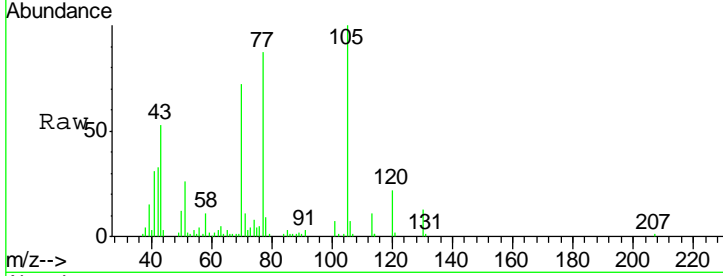




#15
 N-Nitroso-di-n-propylamine
 Concen: 18.37 ng/ul
 RT: 8.27 min Scan# 915
 Delta R.T. -0.00 min
 Lab File: BM010648.D
 Acq: 22 Jun 2017 06:14

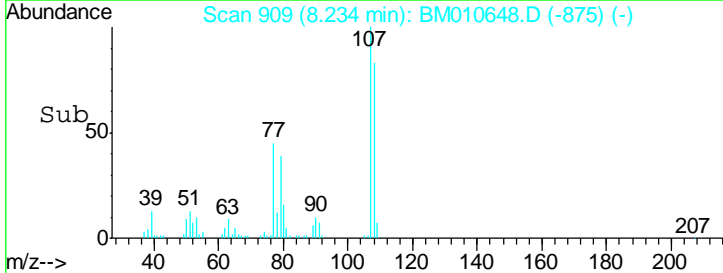
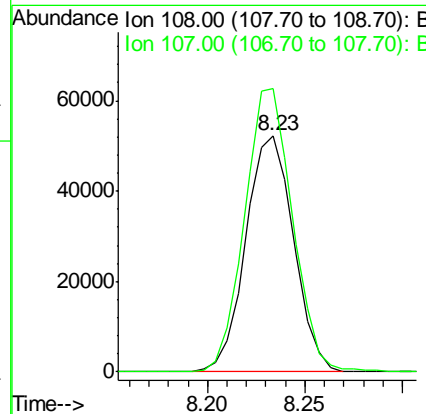
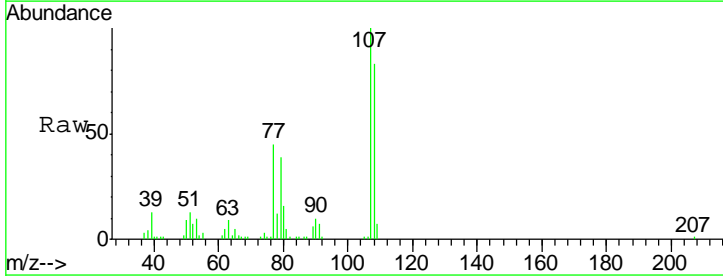
Instrument :
 BNA_M
ClientSampled :
 SSTD02042

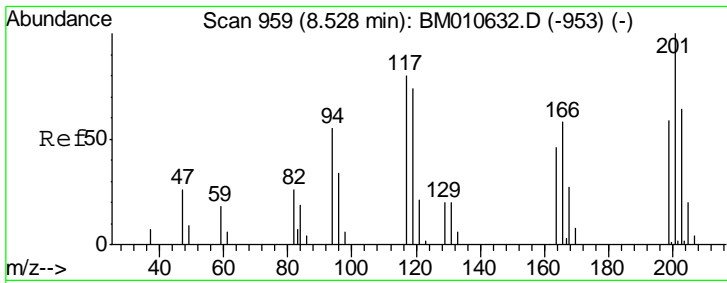
Tgt Ion	Resp	Lower	Upper
70	100		
42	46.2	41.1	61.7
101	9.6	6.7	10.1
130	18.2	14.6	22.0



#16
 4-Methylphenol
 Concen: 18.68 ng/ul
 RT: 8.23 min Scan# 909
 Delta R.T. -0.00 min
 Lab File: BM010648.D
 Acq: 22 Jun 2017 06:14

Tgt Ion	Resp	Lower	Upper
108	100		
107	119.8	84.9	127.3

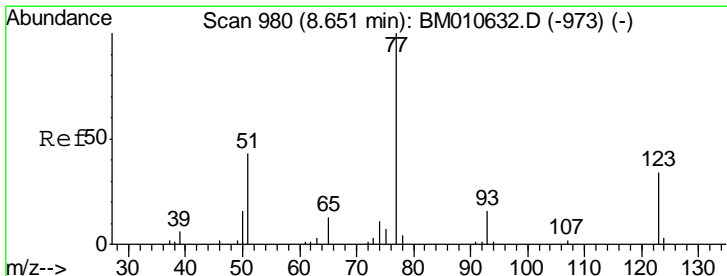
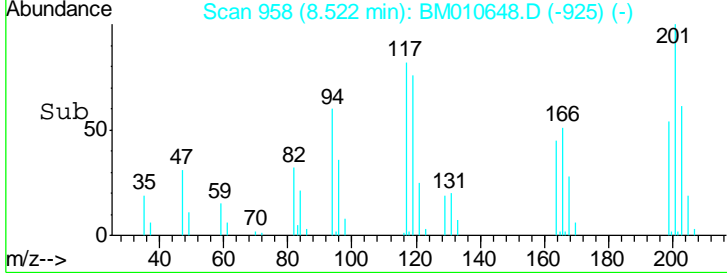
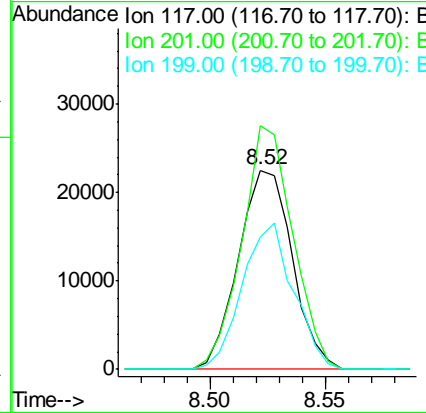
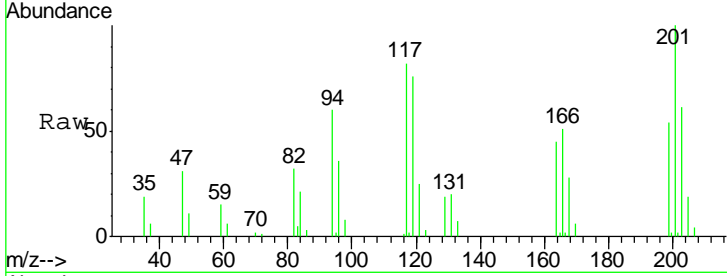




#17
 Hexachloroethane
 Concen: 21.35 ng/ul
 RT: 8.52 min Scan# 958
 Delta R.T. -0.01 min
 Lab File: BM010648.D
 Acq: 22 Jun 2017 06:14

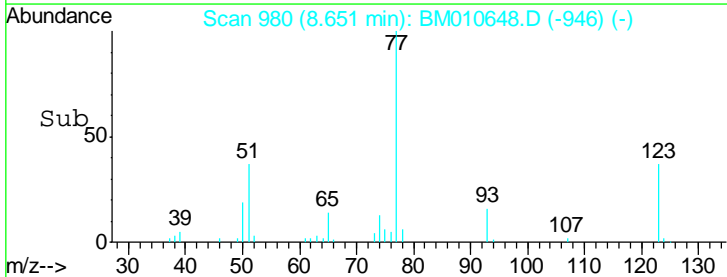
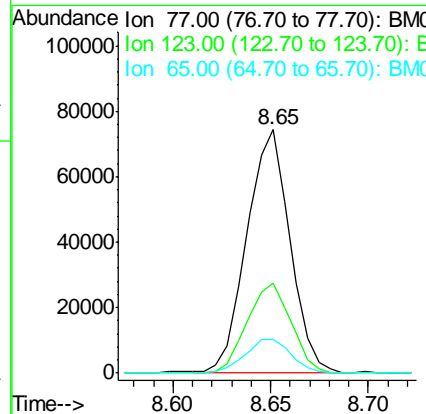
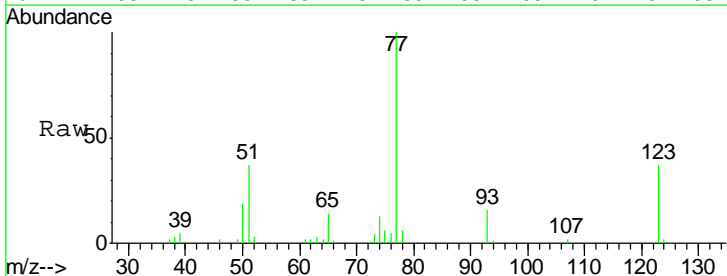
Instrument :
 BNA_M
ClientSampled :
 SSTD02042

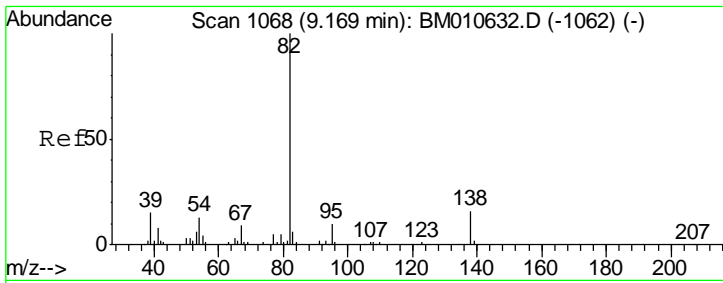
Tgt Ion	Resp	Lower	Upper
117	36622		
201	125.4	111.6	167.4
199	66.2	67.8	101.6#



#20
 Nitrobenzene
 Concen: 19.82 ng/ul
 RT: 8.65 min Scan# 980
 Delta R.T. -0.00 min
 Lab File: BM010648.D
 Acq: 22 Jun 2017 06:14

Tgt Ion	Resp	Lower	Upper
77	113871		
123	37.2	31.0	46.6
65	13.9	12.2	18.2

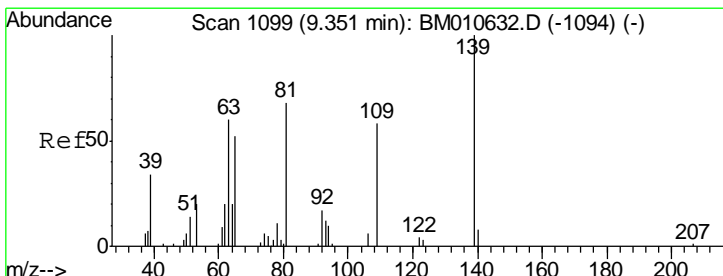
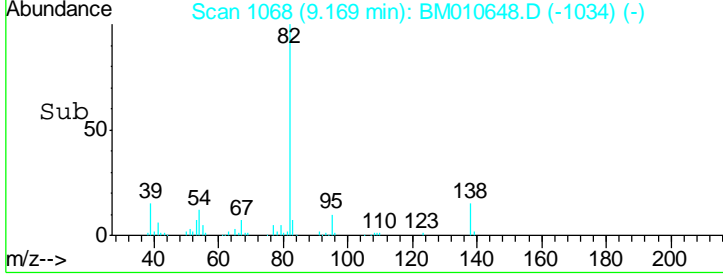
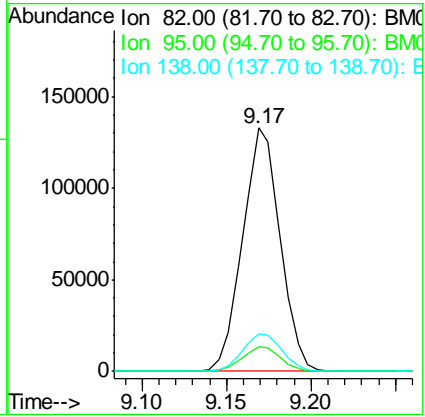
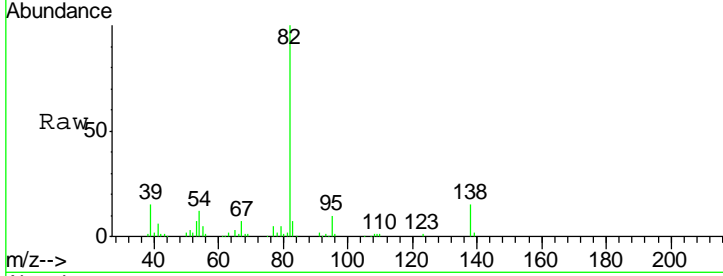




#21
 Isophorone
 Concen: 18.00 ng/ul
 RT: 9.17 min Scan# 1068
 Delta R.T. -0.00 min
 Lab File: BM010648.D
 Acq: 22 Jun 2017 06:14

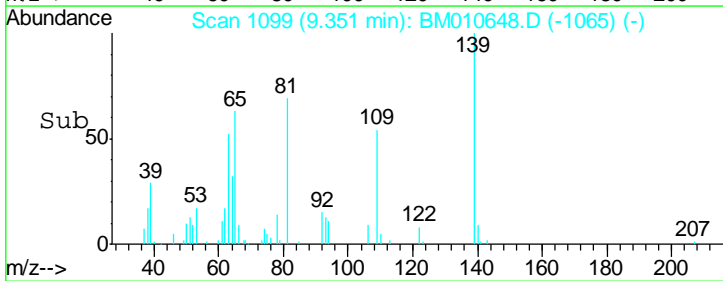
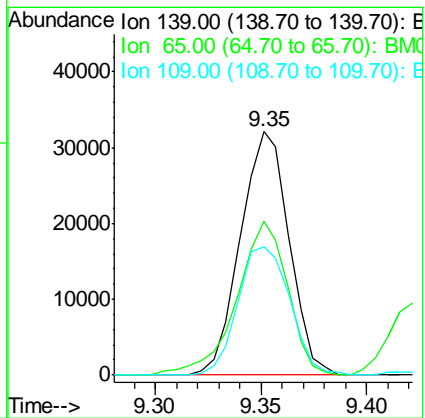
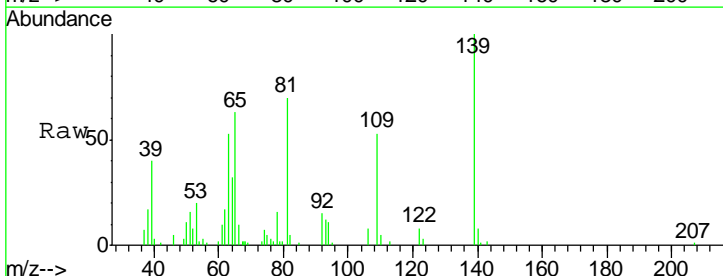
Instrument :
 BNA_M
ClientSampled :
 SSTD02042

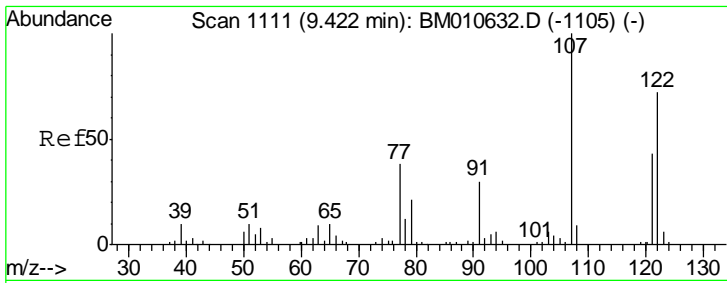
Tgt Ion	Resp	Lower	Upper
82	100		
95	10.0	7.8	11.8
138	15.2	11.9	17.9



#23
 2-Nitrophenol
 Concen: 21.33 ng/ul
 RT: 9.35 min Scan# 1099
 Delta R.T. -0.00 min
 Lab File: BM010648.D
 Acq: 22 Jun 2017 06:14

Tgt Ion	Resp	Lower	Upper
139	100		
65	63.4	55.4	83.0
109	52.8	42.2	63.2

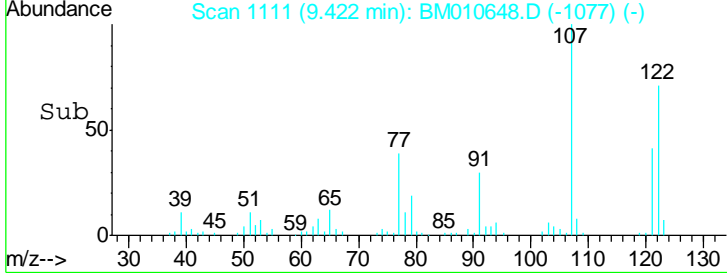
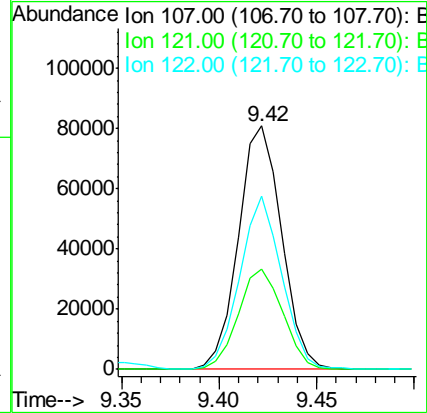
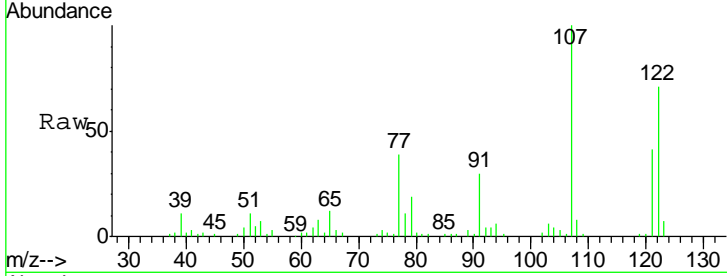




#24
 2,4-Dimethylphenol
 Concen: 20.26 ng/ul
 RT: 9.42 min Scan# 1111
 Delta R.T. -0.00 min
 Lab File: BM010648.D
 Acq: 22 Jun 2017 06:14

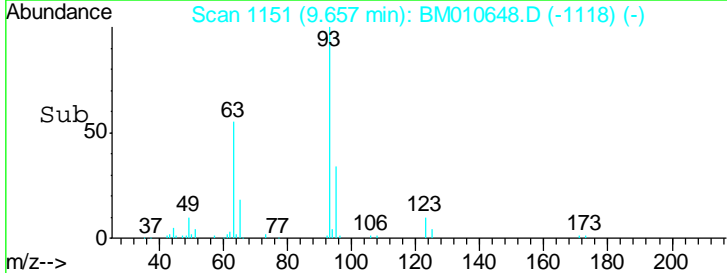
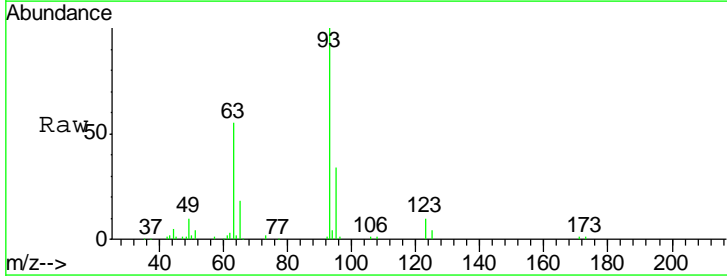
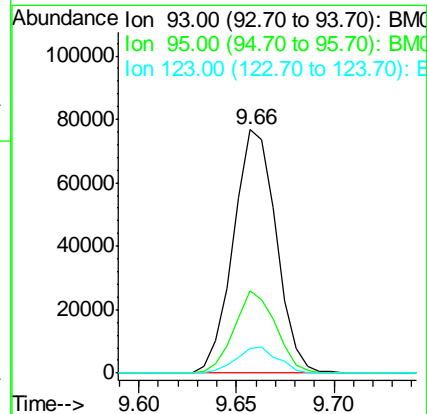
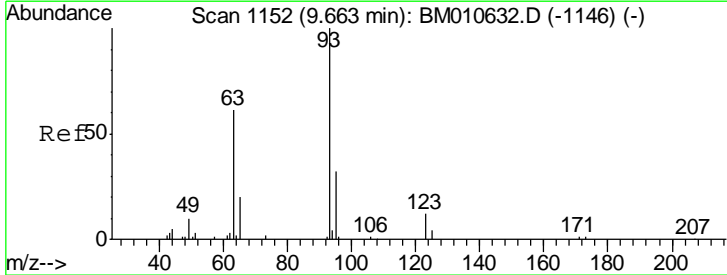
Instrument :
 BNA_M
 ClientSampled :
 SSTD02042

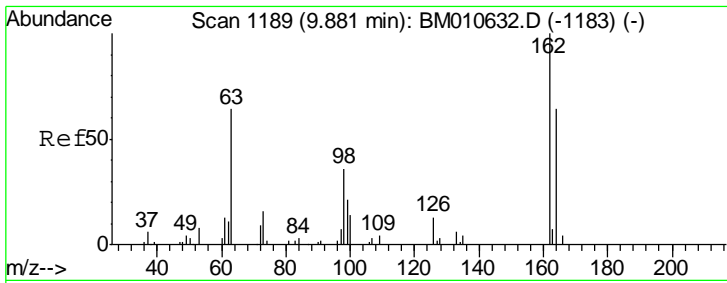
Tgt Ion	Resp	Lower	Upper
107	124012		
107	100		
121	41.3	31.9	47.9
122	71.2	57.8	86.6



#25
 Bis(2-Chloroethoxy)methane
 Concen: 18.42 ng/ul
 RT: 9.66 min Scan# 1151
 Delta R.T. -0.01 min
 Lab File: BM010648.D
 Acq: 22 Jun 2017 06:14

Tgt Ion	Resp	Lower	Upper
93	116640		
93	100		
95	33.9	28.5	42.7
123	10.1	8.9	13.3

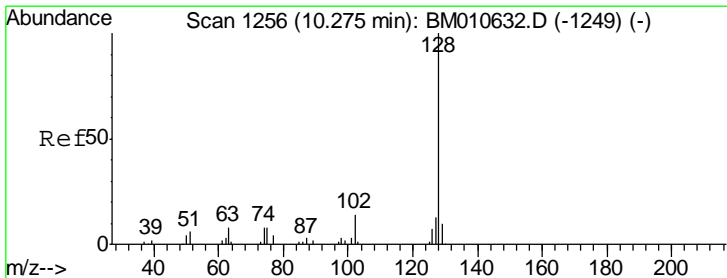
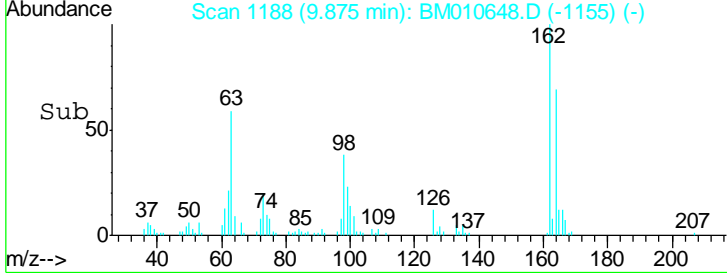
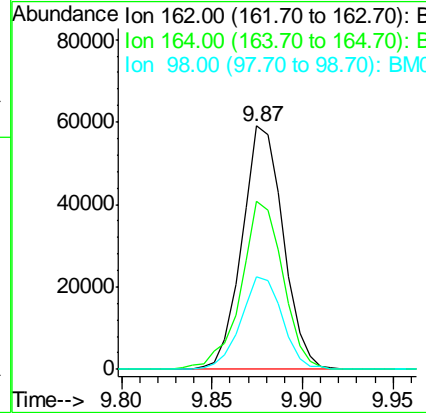
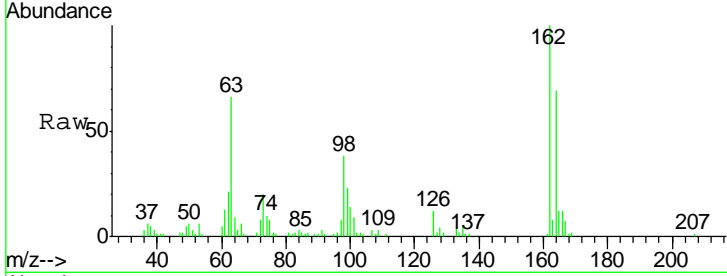




#27
 2,4-Dichlorophenol
 Concen: 20.05 ng/ul
 RT: 9.87 min Scan# 1188
 Delta R.T. -0.01 min
 Lab File: BM010648.D
 Acq: 22 Jun 2017 06:14

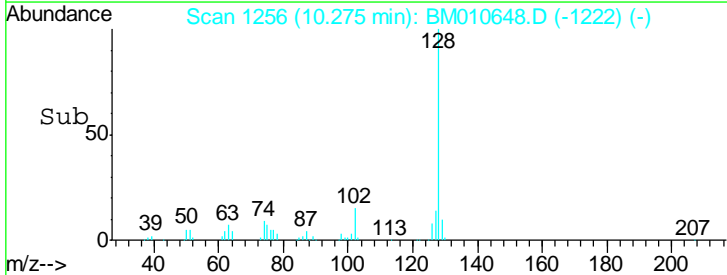
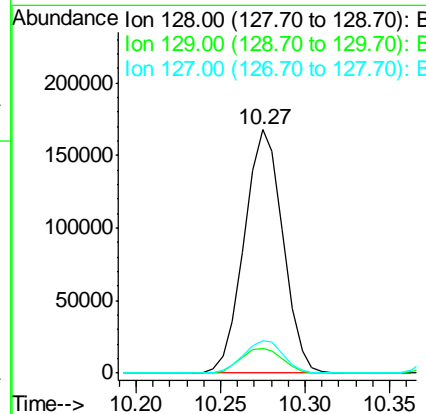
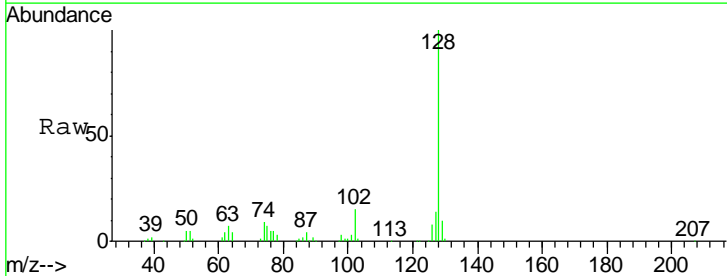
Instrument :
 BNA_M
 ClientSampled :
 SSTD02042

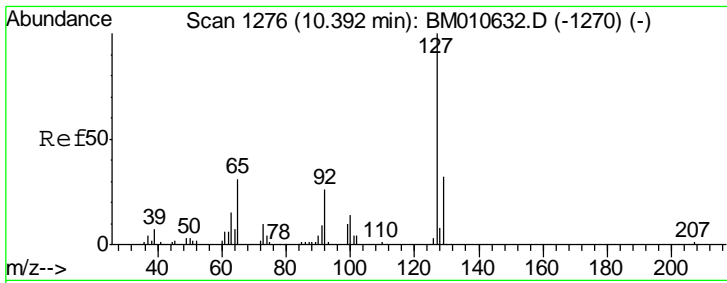
Tgt Ion	Resp	Lower	Upper
162	100		
164	69.3	47.8	71.6
98	37.8	23.0	34.4



#28
 Naphthalene
 Concen: 19.50 ng/ul
 RT: 10.27 min Scan# 1256
 Delta R.T. -0.00 min
 Lab File: BM010648.D
 Acq: 22 Jun 2017 06:14

Tgt Ion	Resp	Lower	Upper
128	100		
129	10.2	8.8	13.2
127	13.5	10.6	16.0

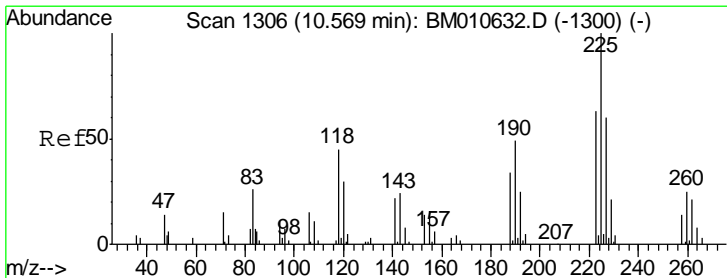
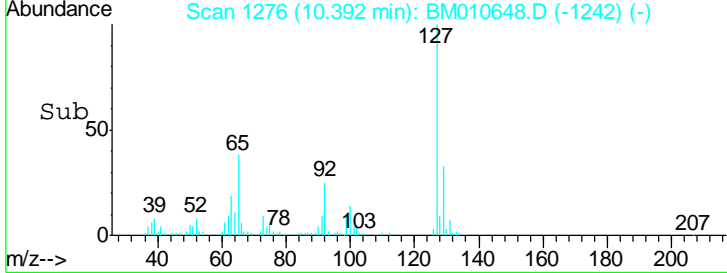
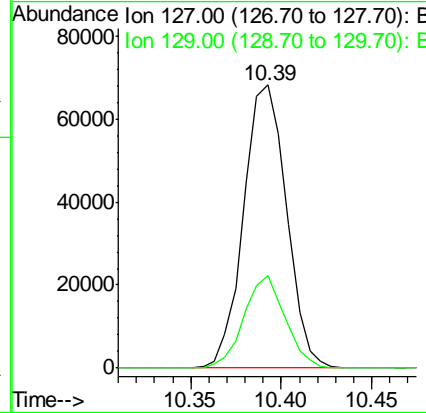
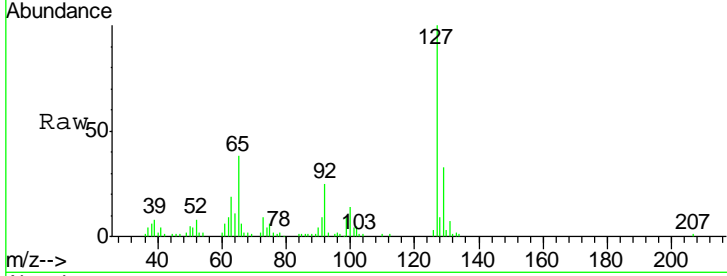




#30
 4-Chloroaniline
 Concen: 22.21 ng/ul
 RT: 10.39 min Scan# 1276
 Delta R.T. -0.00 min
 Lab File: BM010648.D
 Acq: 22 Jun 2017 06:14

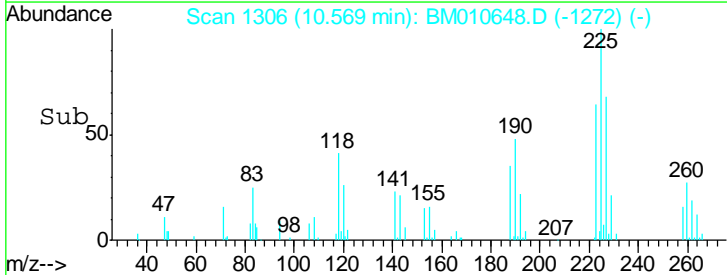
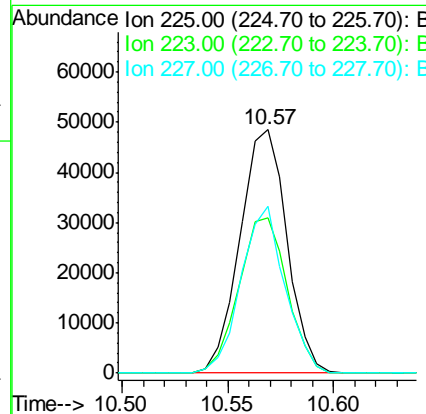
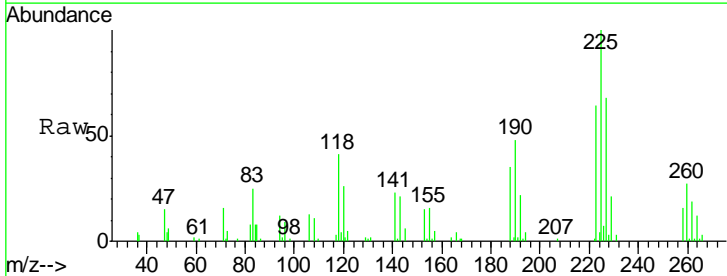
Instrument :
 BNA_M
 ClientSampled :
 SSTD02042

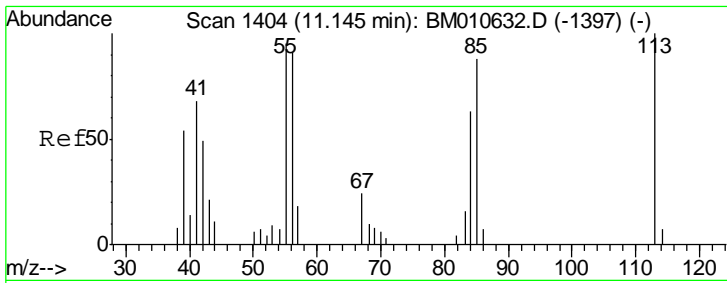
Tgt Ion	Resp	Lower	Upper
127	112386		
129	32.6	28.4	42.6



#31
 Hexachlorobutadiene
 Concen: 21.30 ng/ul
 RT: 10.57 min Scan# 1306
 Delta R.T. -0.00 min
 Lab File: BM010648.D
 Acq: 22 Jun 2017 06:14

Tgt Ion	Resp	Lower	Upper
225	74688		
223	63.5	49.4	74.2
227	68.4	45.4	68.2#



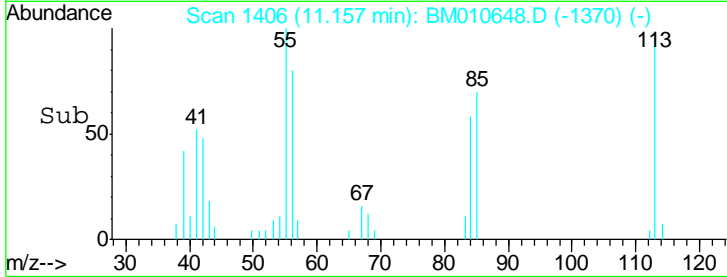
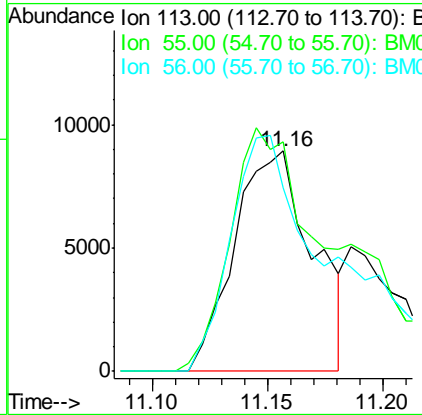
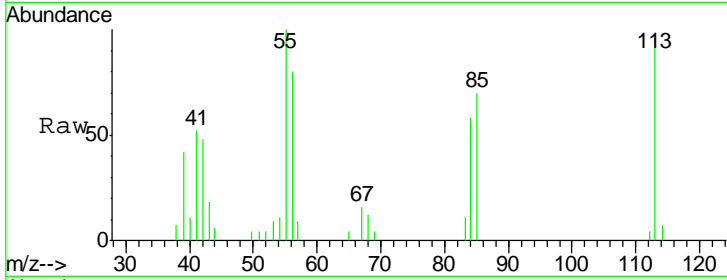


#32
 Caprolactam
 Concen: 12.96 ng/ul
 RT: 11.16 min Scan# 1406
 Delta R.T. 0.01 min
 Lab File: BM010648.D
 Acq: 22 Jun 2017 06:14

Instrument :
 BNA_M
 ClientSampled :
 SSTD02042

Tgt Ion: 113 Resp: 21150

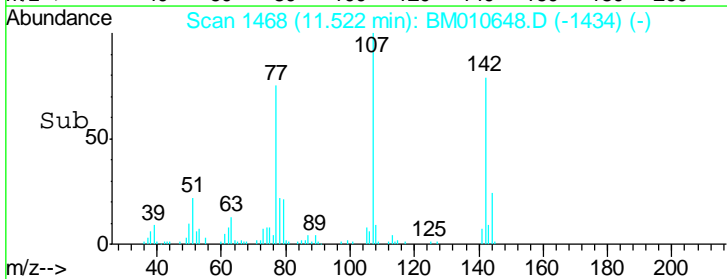
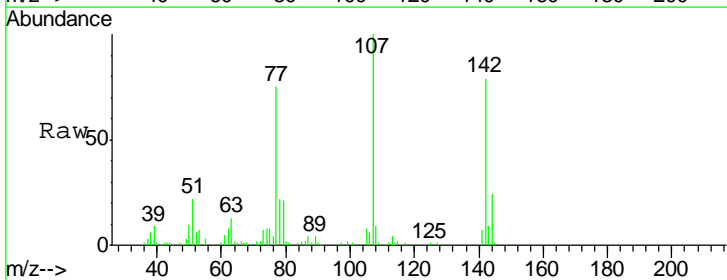
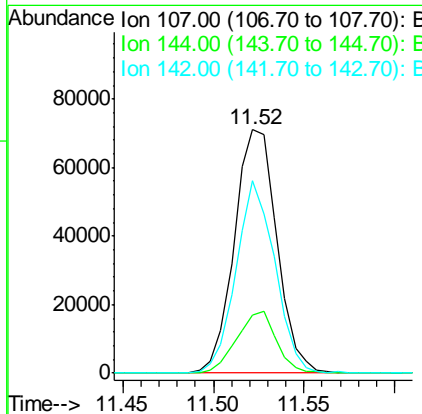
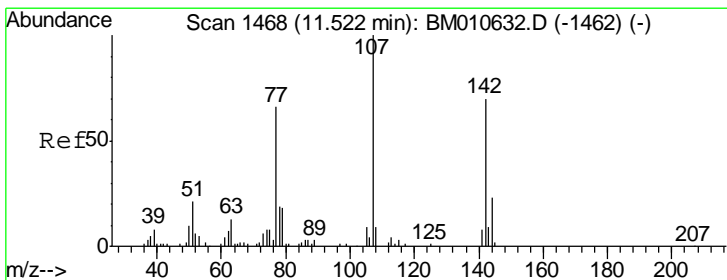
Ion	Ratio	Lower	Upper
113	100		
55	103.8	94.8	142.2
56	83.4	86.0	129.0

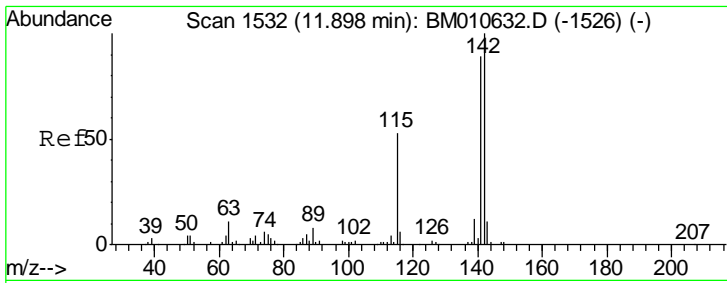


#33
 4-Chloro-3-methylphenol
 Concen: 19.61 ng/ul
 RT: 11.52 min Scan# 1468
 Delta R.T. -0.00 min
 Lab File: BM010648.D
 Acq: 22 Jun 2017 06:14

Tgt Ion: 107 Resp: 116259

Ion	Ratio	Lower	Upper
107	100		
144	24.0	20.4	30.6
142	79.0	60.5	90.7

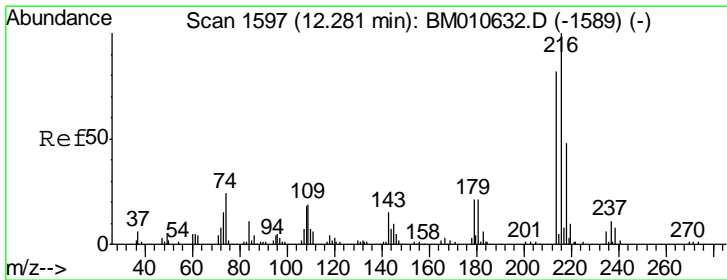
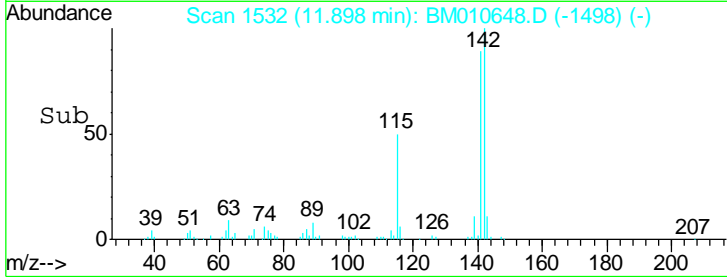
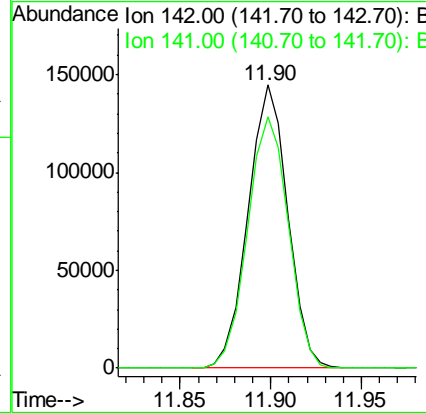
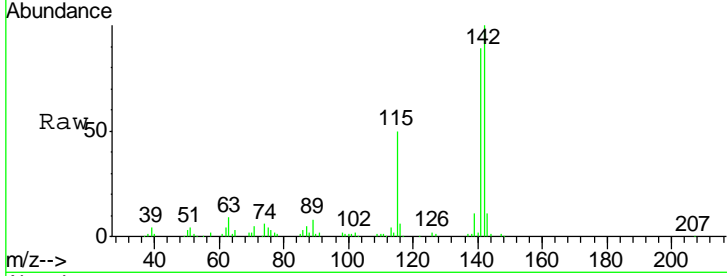




#34
 2-Methylnaphthalene
 Concen: 19.91 ng/ul
 RT: 11.90 min Scan# 1532
 Delta R.T. -0.00 min
 Lab File: BM010648.D
 Acq: 22 Jun 2017 06:14

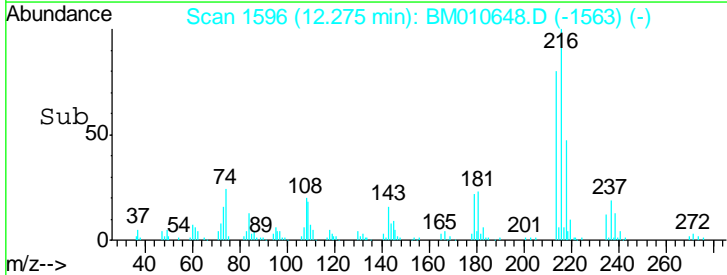
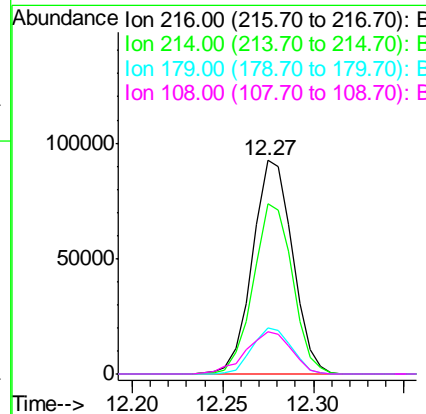
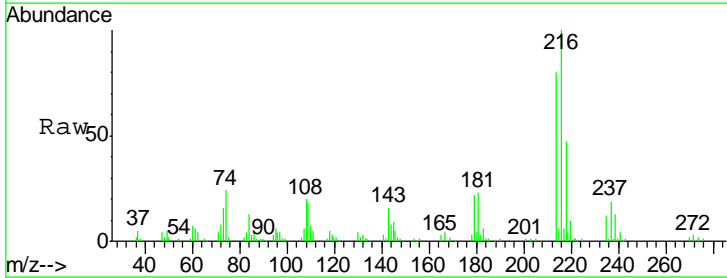
Instrument :
 BNA_M
 ClientSampled :
 SST02042

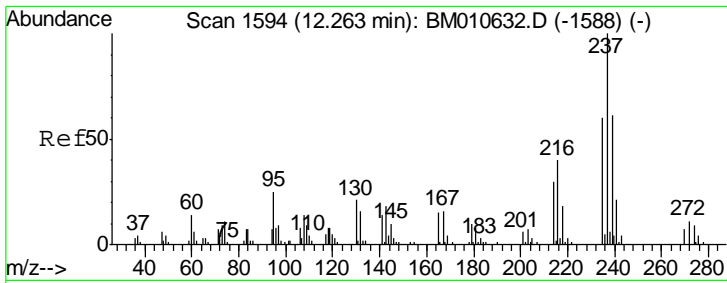
Tgt Ion:142 Resp: 219791
 Ion Ratio Lower Upper
 142 100
 141 88.7 74.1 111.1



#36
 1,2,4,5-Tetrachlorobenzene
 Concen: 20.22 ng/ul
 RT: 12.27 min Scan# 1596
 Delta R.T. -0.01 min
 Lab File: BM010648.D
 Acq: 22 Jun 2017 06:14

Tgt Ion:216 Resp: 142151
 Ion Ratio Lower Upper
 216 100
 214 79.5 60.6 90.8
 179 21.6 17.5 26.3
 108 20.0 11.3 16.9#

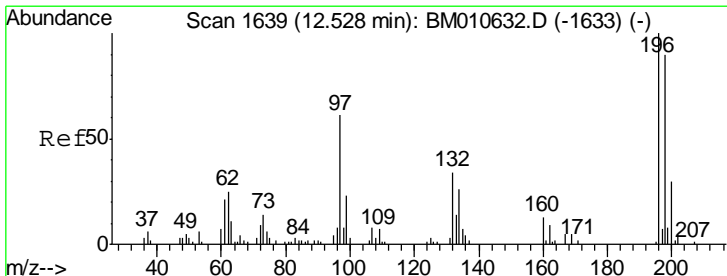
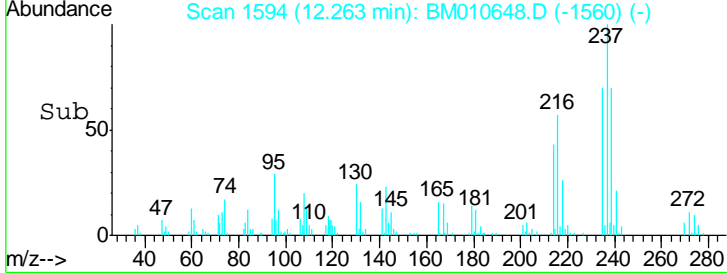
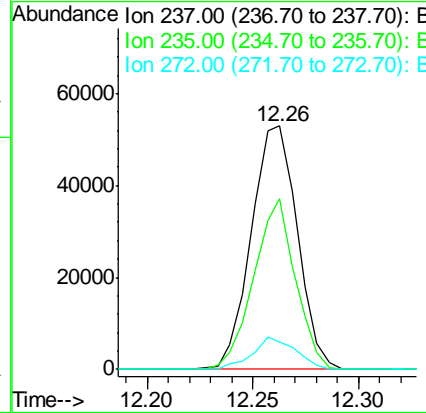
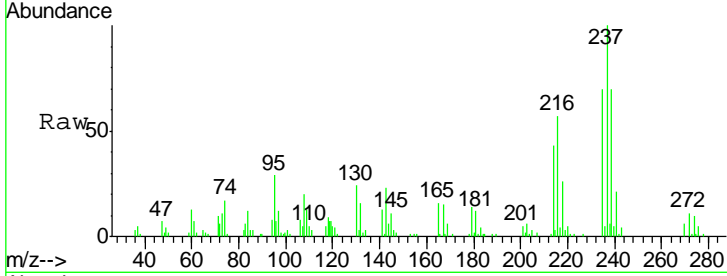




#37
 Hexachlorocyclopentadiene
 Concen: 19.85 ng/ul
 RT: 12.26 min Scan# 1594
 Delta R.T. -0.00 min
 Lab File: BM010648.D
 Acq: 22 Jun 2017 06:14

Instrument :
 BNA_M
 ClientSampled :
 SSTD02042

Tgt Ion	Resp	Lower	Upper
237	100		
235	70.0	50.2	75.4
272	11.5	11.0	16.6



#38
 2,4,6-Trichlorophenol
 Concen: 20.25 ng/ul
 RT: 12.53 min Scan# 1639
 Delta R.T. -0.00 min
 Lab File: BM010648.D
 Acq: 22 Jun 2017 06:14

Tgt Ion	Resp	Lower	Upper
196	100		
198	92.6	74.1	111.1
200	30.0	25.2	37.8

