

Data Path : Z:\HPCHEM1\BNA_M\DATA\BM062215\
 Data File : BM001776.D
 Acq On : 22 Jun 2015 17:12
 Operator : TP/IZ
 Sample : G2474-05
 Misc : 4 TIME INT STD
 ALS Vial : 8 Sample Multiplier: 4

Instrument :
 BNA_M
ClientSampled :
 C-5

Manual Integrations
APPROVED
 apatel
 6/23/2015 3:35:20 PM

Quant Time: Jun 23 14:07:28 2015
 Quant Method : Z:\HPCHEM1\BNA_M\METHODS\SIM-BM061915.M
 Quant Title : ASP BNA STANDARDS FOR 5 POINT CALIBRATION
 QLast Update : Fri Jun 19 05:05:14 2015
 Response via : Initial Calibration

Internal Standards	R.T.	QIon	Response	Conc	Units	Dev(Min)
1) 1,4-Dichlorobenzene-d4	7.66	152	65207	5.00	ng	0.00
6) Naphthalene-d8	10.46	136	237705	5.00	ng	0.00
12) Acenaphthene-d10	14.32	164	114755	5.00	ng	0.00
18) Phenanthrene-d10	17.06	188	312953	5.00	ng	0.00
25) Chrysene-d12	21.27	240	199191	5.00	ng	0.02
32) Perylene-d12	23.48	264	191790	5.00	ng	0.01
System Monitoring Compounds						
4) 2-Fluorophenol	5.25	112	155447	40.79	ng	0.00
5) Phenol-d6	6.83	99	128139	26.12	ng	0.00
7) Nitrobenzene-d5	8.83	82	350282	75.54	ng	0.00
13) 2,4,6-Tribromophenol	15.80	330	89376	99.76	ng	0.00
14) 2-Fluorobiphenyl	12.94	172	634577	61.89	ng	0.00
27) Terphenyl-d14	19.71	244	455416	62.06	ng	0.01
Target Compounds						
22) Phenanthrene	17.09	178	1932	0.07	ng	# 84
24) Fluoranthene	19.13	202	619	0.04	ng	# 88
26) Pyrene	19.49	202	597	0.03	ng	96
28) Benzo(a)anthracene	21.25	228	1154m	0.08	ng	
30) Bis(2-ethylhexyl)phthalate	21.18	149	3148	0.36	ng	# 99

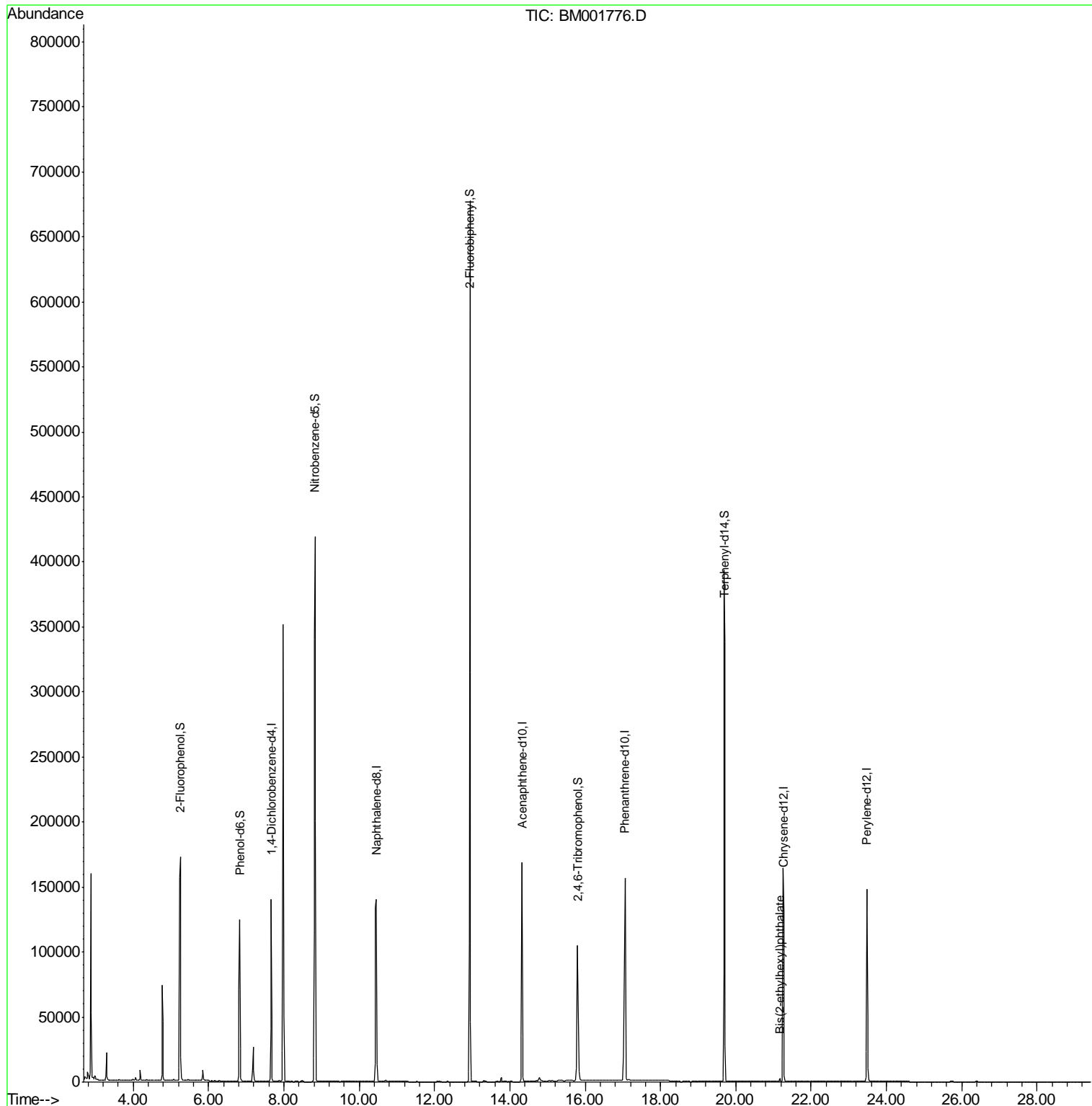
(#) = qualifier out of range (m) = manual integration (+) = signals summed

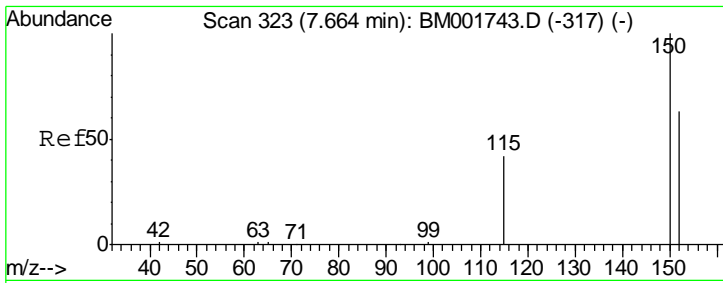
Data Path : Z:\HPCHEM1\BNA_M\DATA\BM062215\
 Data File : BM001776.D
 Acq On : 22 Jun 2015 17:12
 Operator : TP/IZ
 Sample : G2474-05
 Misc : 4 TIME INT STD
 ALS Vial : 8 Sample Multiplier: 4

Instrument :
 BNA_M
 ClientSampleId :
 C-5

Manual Integrations
 APPROVED
 apatel
 6/23/2015 3:35:20 PM

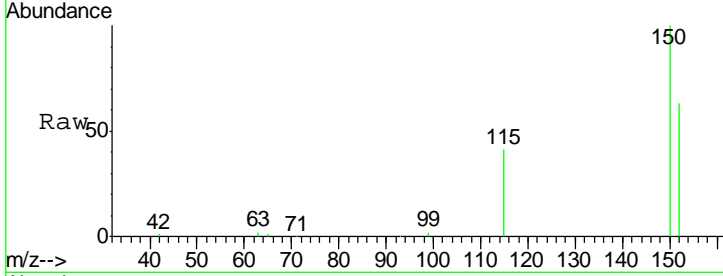
Quant Time: Jun 23 14:07:28 2015
 Quant Method : Z:\HPCHEM1\BNA_M\METHODS\SIM-BM061915.M
 Quant Title : ASP BNA STANDARDS FOR 5 POINT CALIBRATION
 QLast Update : Fri Jun 19 05:05:14 2015
 Response via : Initial Calibration





#1
 1,4-Dichlorobenzene-d4
 Concen: 5.00 ng
 RT: 7.66 min Scan# 323
 Delta R.T. 0.00 min
 Lab File: BM001776.D
 Acq: 22 Jun 2015 17:12

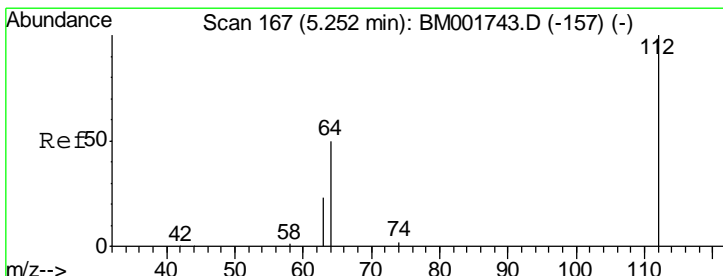
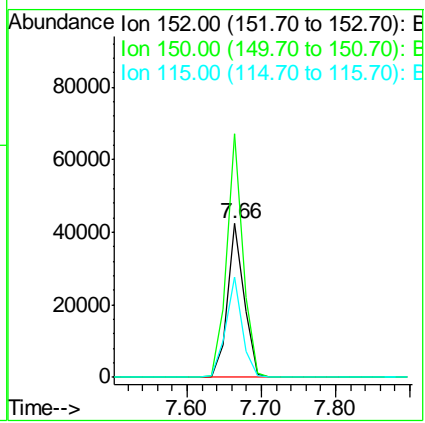
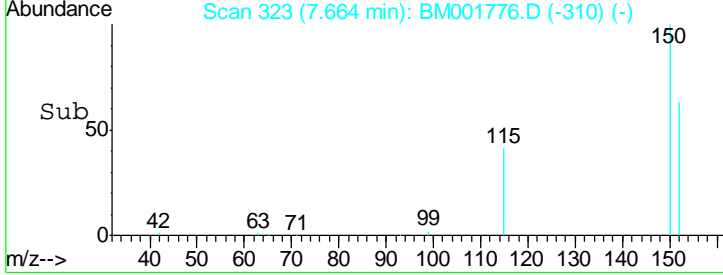
Instrument :
 BNA_M
ClientSampled :
 C-5



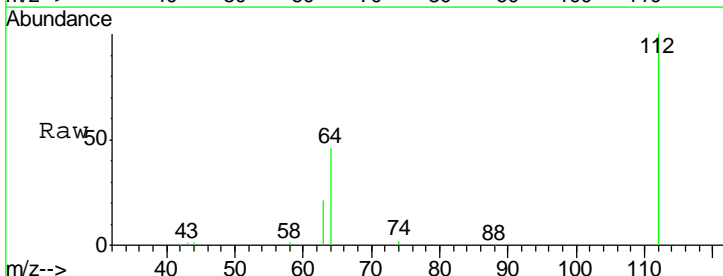
Tgt Ion:152 Resp: 65207

Ion	Ratio	Lower	Upper
152	100		
150	158.7	127.5	191.3
115	65.2	53.2	79.8

Manual Integrations
APPROVED
 apatel
 6/23/2015 3:35:20 PM

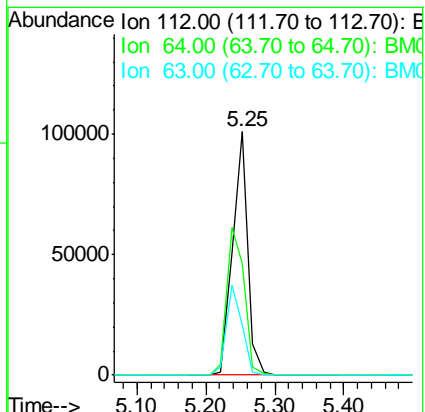
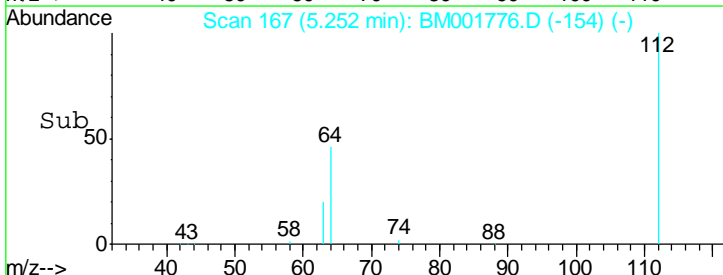


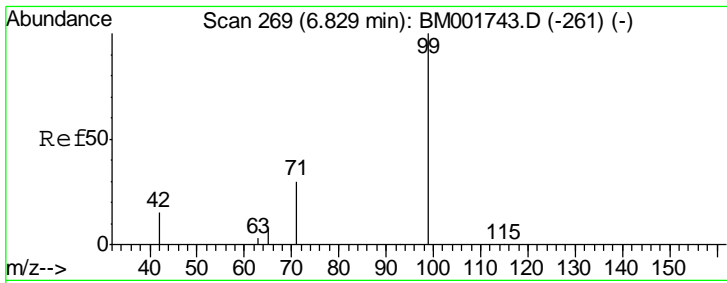
#4
 2-Fluorophenol
 Concen: 40.79 ng
 RT: 5.25 min Scan# 167
 Delta R.T. 0.00 min
 Lab File: BM001776.D
 Acq: 22 Jun 2015 17:12



Tgt Ion:112 Resp: 155447

Ion	Ratio	Lower	Upper
112	100		
64	69.4	55.6	83.4
63	37.7	30.2	45.2



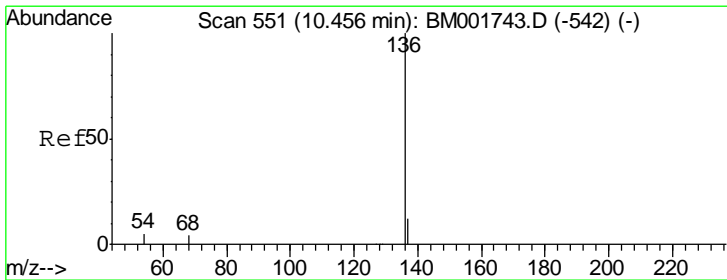
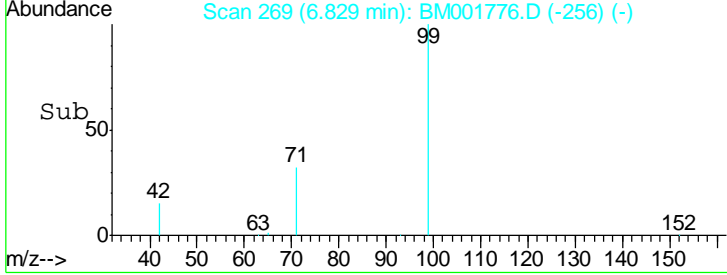
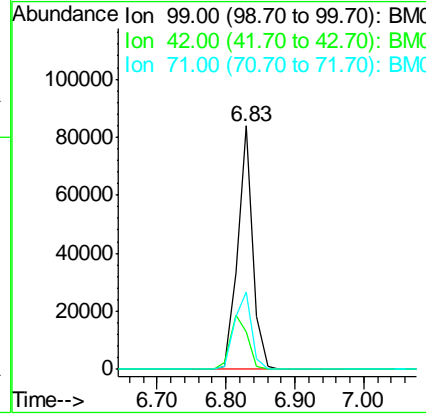
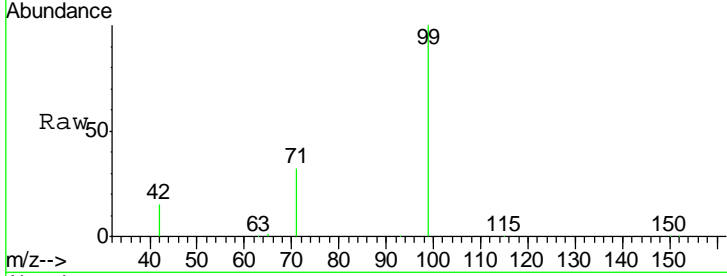


#5
 Phenol-d6
 Concen: 26.12 ng
 RT: 6.83 min Scan# 269
 Delta R.T. 0.00 min
 Lab File: BM001776.D
 Acq: 22 Jun 2015 17:12

Instrument :
 BNA_M
ClientSampled :
 C-5

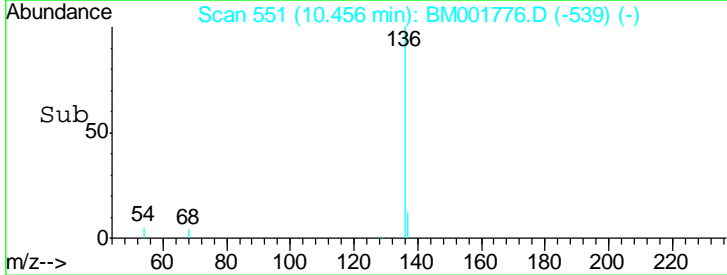
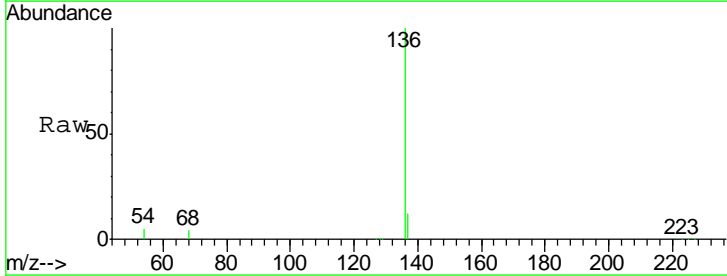
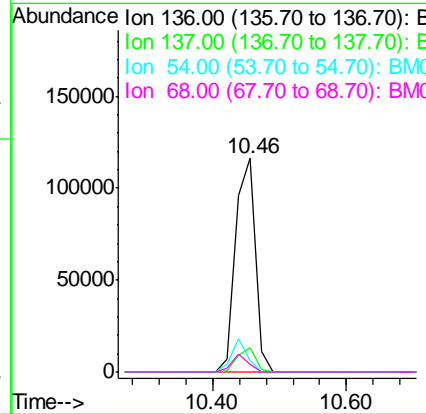
Tgt Ion	Resp	Lower	Upper
99	128139		
42	25.3	21.4	32.0
71	36.0	28.3	42.5

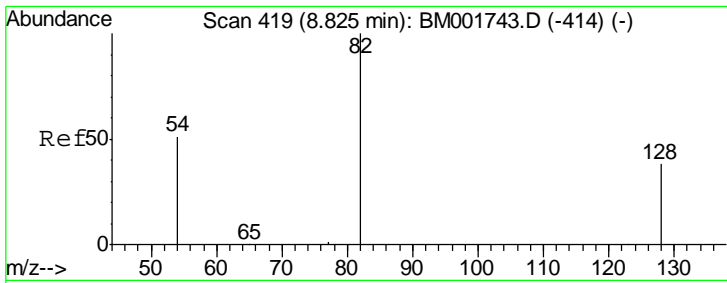
Manual Integrations
APPROVED
 apatel
 6/23/2015 3:35:20 PM



#6
 Naphthalene-d8
 Concen: 5.00 ng
 RT: 10.46 min Scan# 551
 Delta R.T. 0.00 min
 Lab File: BM001776.D
 Acq: 22 Jun 2015 17:12

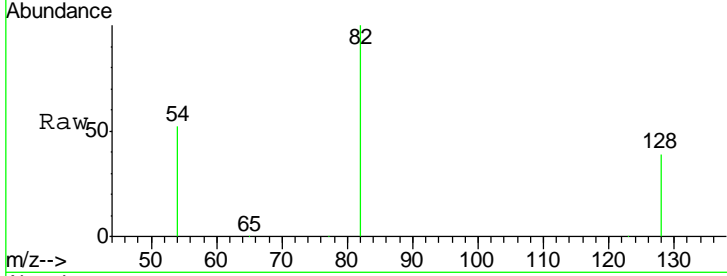
Tgt Ion	Resp	Lower	Upper
136	237705		
137	11.6	9.4	14.0
54	5.3	4.4	6.6
68	3.7	3.1	4.7





#7
 Nitrobenzene-d5
 Concen: 75.54 ng
 RT: 8.83 min Scan# 419
 Delta R.T. 0.00 min
 Lab File: BM001776.D
 Acq: 22 Jun 2015 17:12

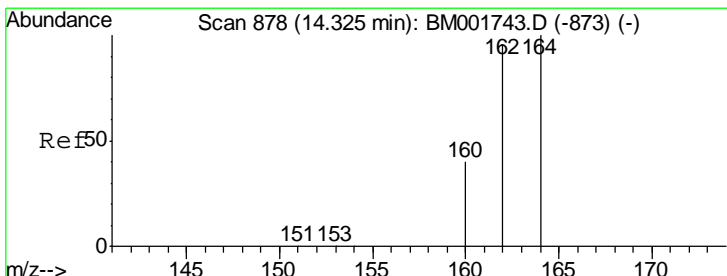
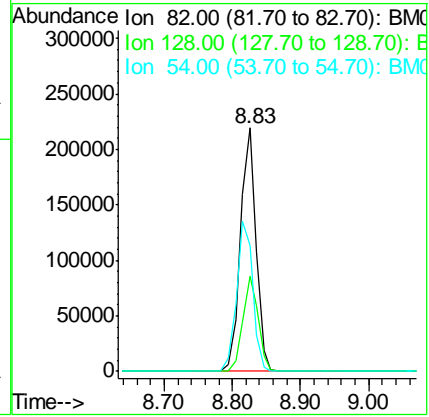
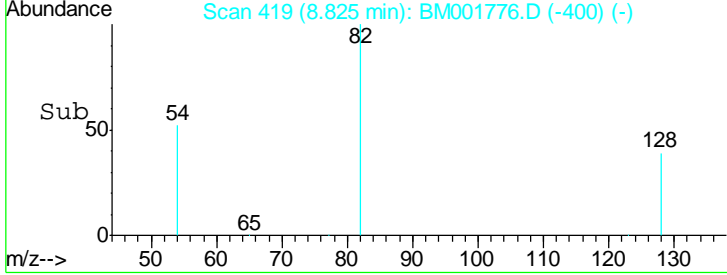
Instrument :
 BNA_M
ClientSampled :
 C-5



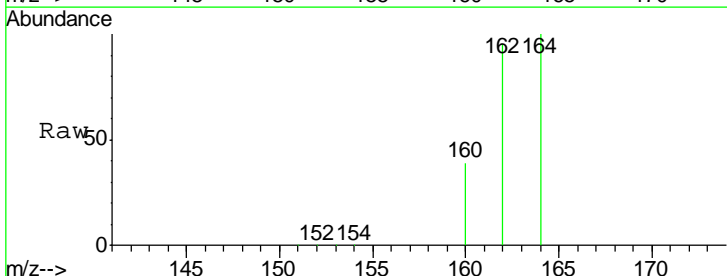
Tgt Ion: 82 Resp: 350282

Ion	Ratio	Lower	Upper
82	100		
128	38.9	31.3	46.9
54	51.8	41.9	62.9

Manual Integrations
APPROVED
 apatel
 6/23/2015 3:35:20 PM

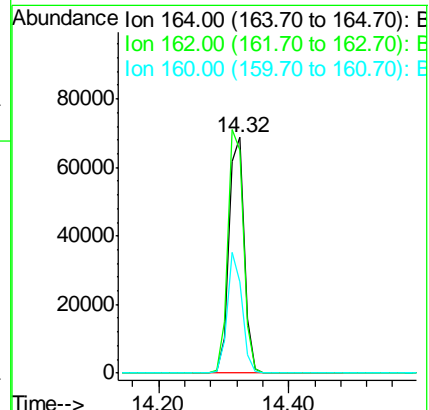
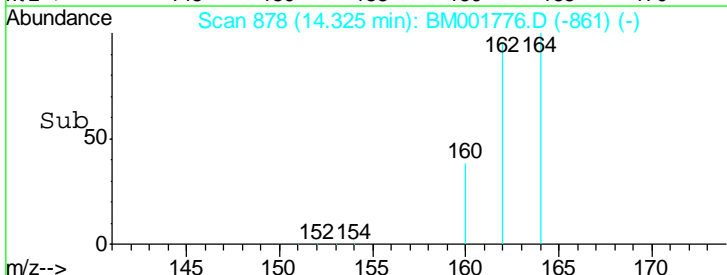


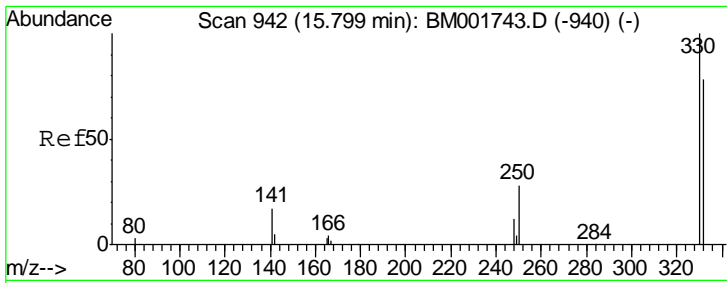
#12
 Acenaphthene-d10
 Concen: 5.00 ng
 RT: 14.32 min Scan# 878
 Delta R.T. 0.00 min
 Lab File: BM001776.D
 Acq: 22 Jun 2015 17:12



Tgt Ion: 164 Resp: 114755

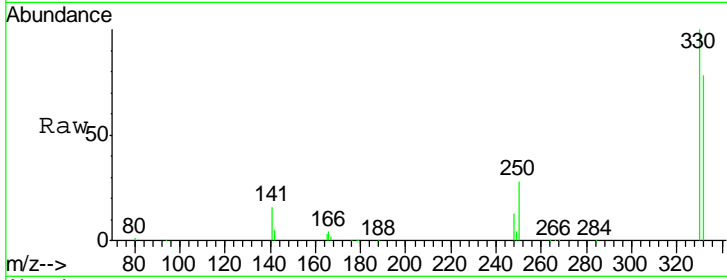
Ion	Ratio	Lower	Upper
164	100		
162	94.5	76.6	114.8
160	38.5	31.8	47.8





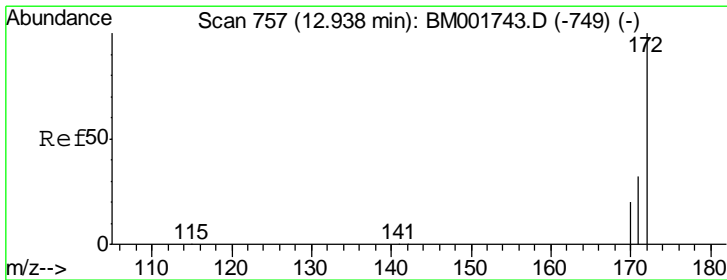
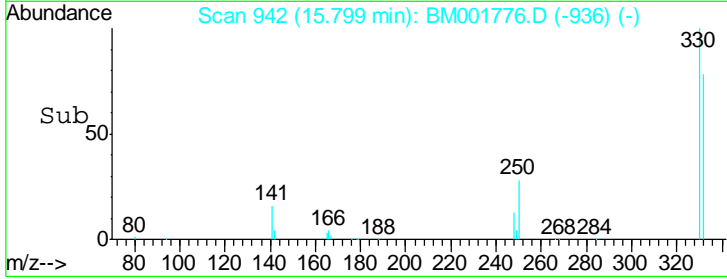
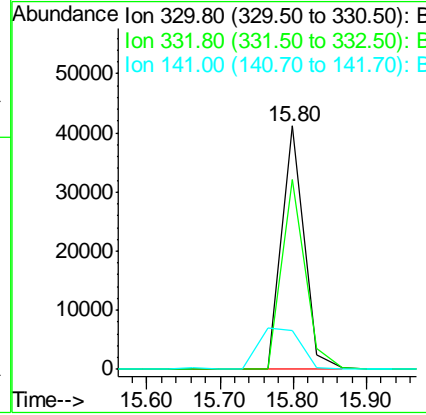
#13
 2,4,6-Tribromophenol
 Concen: 99.76 ng
 RT: 15.80 min Scan# 942
 Delta R.T. 0.00 min
 Lab File: BM001776.D
 Acq: 22 Jun 2015 17:12

Instrument :
 BNA_M
 ClientSampled :
 C-5



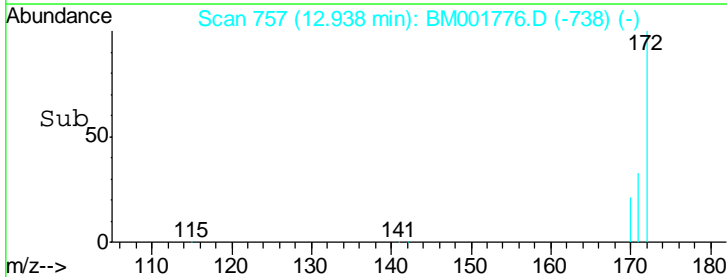
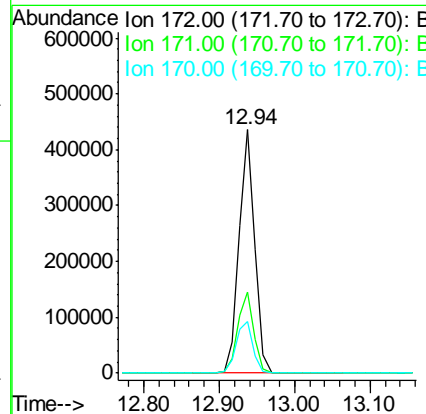
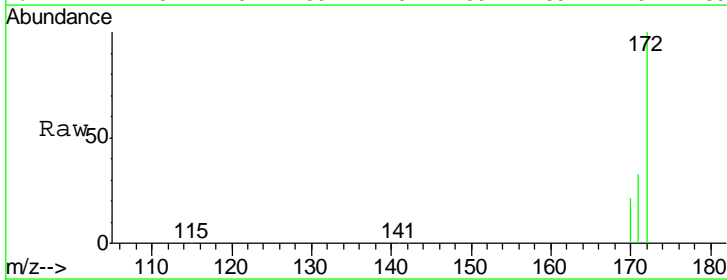
Tgt Ion	Resp	Lower	Upper
330	100		
332	81.3	65.8	98.8
141	0.0	0.0	0.0

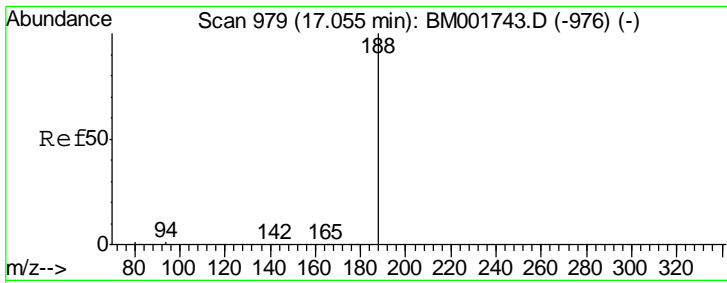
Manual Integrations
 APPROVED
 apatel
 6/23/2015 3:35:20 PM



#14
 2-Fluorobiphenyl
 Concen: 61.89 ng
 RT: 12.94 min Scan# 757
 Delta R.T. 0.00 min
 Lab File: BM001776.D
 Acq: 22 Jun 2015 17:12

Tgt Ion	Resp	Lower	Upper
172	100		
171	33.4	26.2	39.2
170	21.4	16.6	24.8



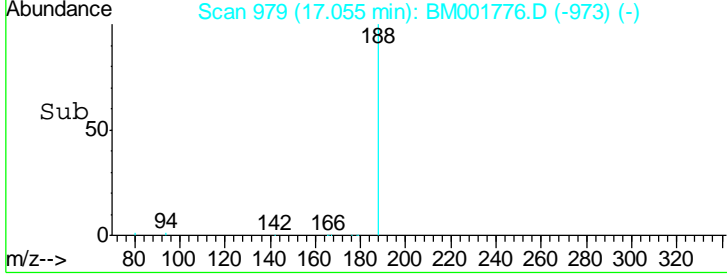
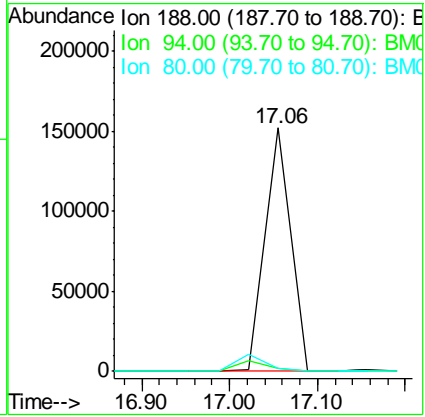
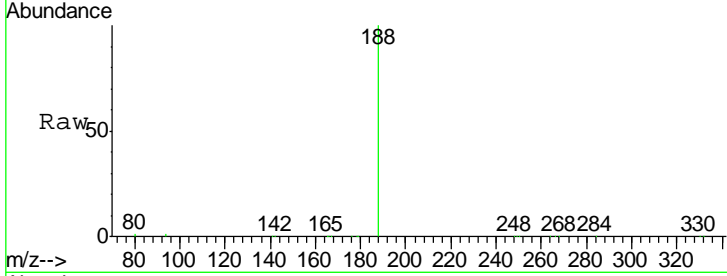


#18
 Phenanthrene-d10
 Concen: 5.00 ng
 RT: 17.06 min Scan# 979
 Delta R.T. 0.00 min
 Lab File: BM001776.D
 Acq: 22 Jun 2015 17:12

Instrument :
 BNA_M
ClientSampled :
 C-5

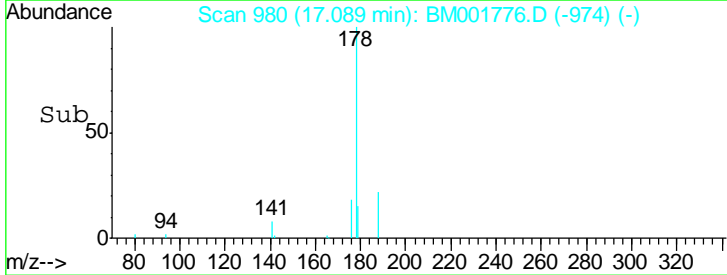
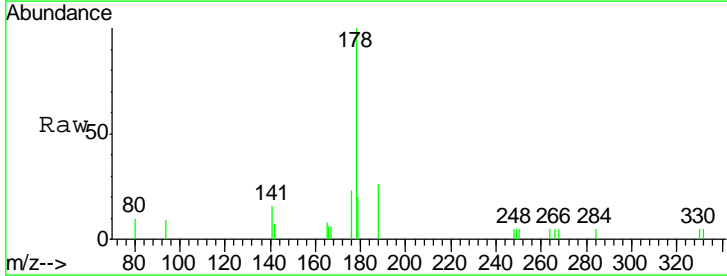
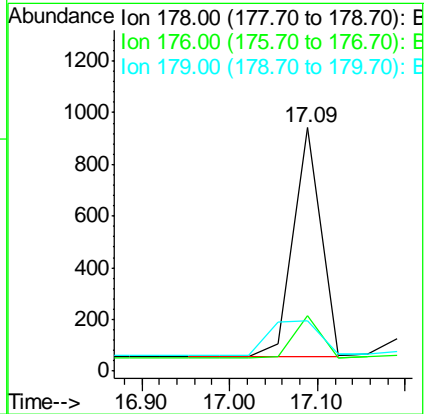
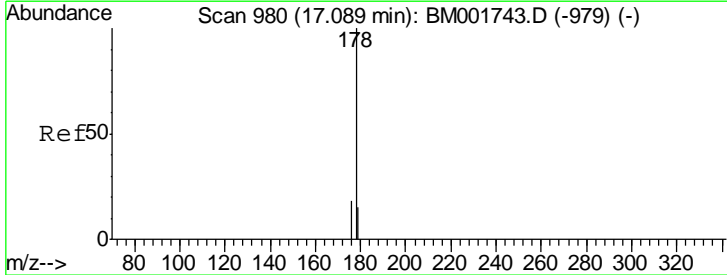
Tgt Ion	Ratio	Lower	Upper
188	100		
94	1.2	1.3	1.9#
80	1.0	1.0	1.6#

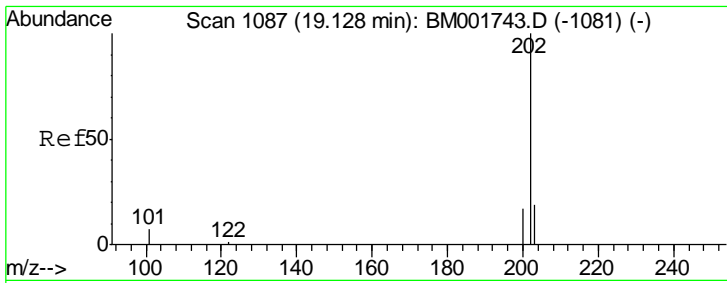
Manual Integrations
APPROVED
 apatel
 6/23/2015 3:35:20 PM



#22
 Phenanthrene
 Concen: 0.07 ng
 RT: 17.09 min Scan# 980
 Delta R.T. 0.00 min
 Lab File: BM001776.D
 Acq: 22 Jun 2015 17:12

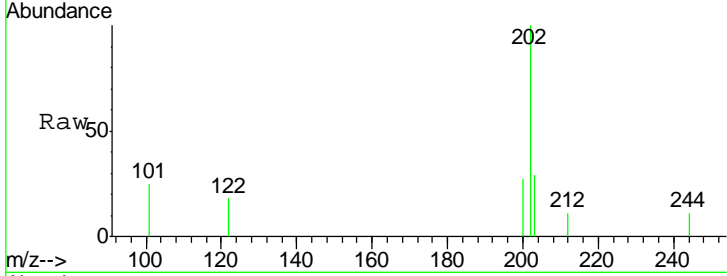
Tgt Ion	Ratio	Lower	Upper
178	100		
176	17.5	15.4	23.2
179	29.0	12.6	19.0#





#24
 Fluoranthene
 Concen: 0.04 ng
 RT: 19.13 min Scan# 1087
 Delta R.T. 0.00 min
 Lab File: BM001776.D
 Acq: 22 Jun 2015 17:12

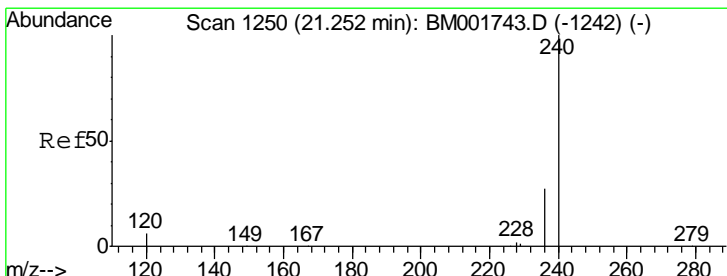
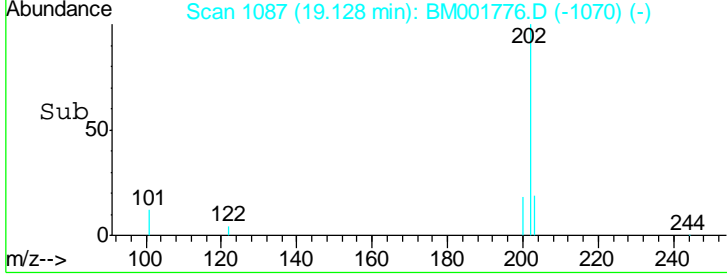
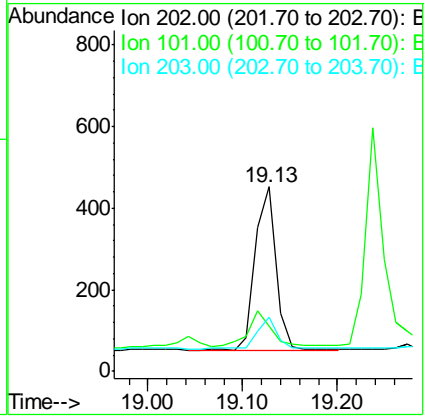
Instrument :
 BNA_M
 ClientSampled :
 C-5



Tgt Ion: 202 Resp: 619

Ion	Ratio	Lower	Upper
202	100		
101	22.6	10.8	16.2#
203	18.4	13.8	20.6

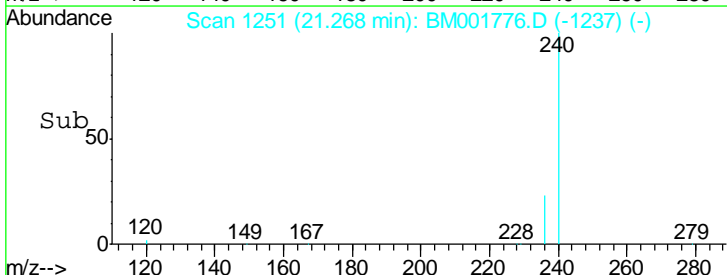
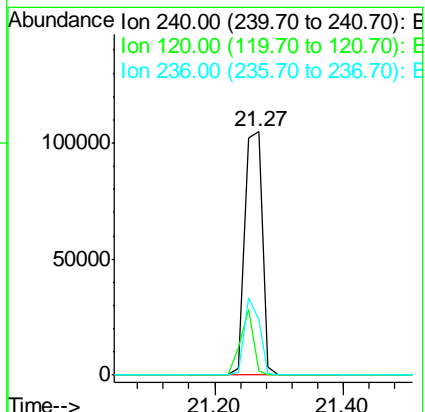
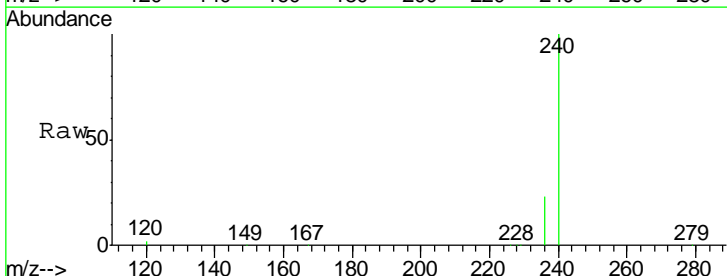
Manual Integrations
 APPROVED
 apatel
 6/23/2015 3:35:20 PM

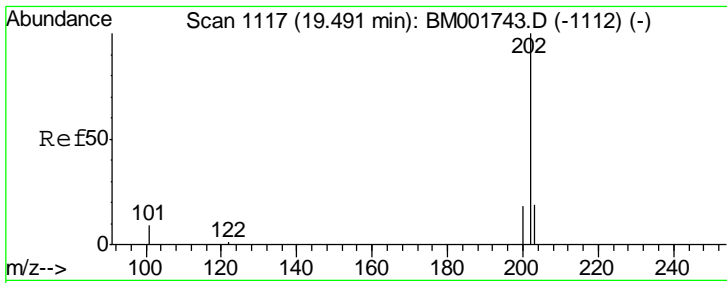


#25
 Chrysene-d12
 Concen: 5.00 ng
 RT: 21.27 min Scan# 1251
 Delta R.T. 0.02 min
 Lab File: BM001776.D
 Acq: 22 Jun 2015 17:12

Tgt Ion: 240 Resp: 199191

Ion	Ratio	Lower	Upper
240	100		
120	1.8	4.7	7.1#
236	22.6	21.6	32.4



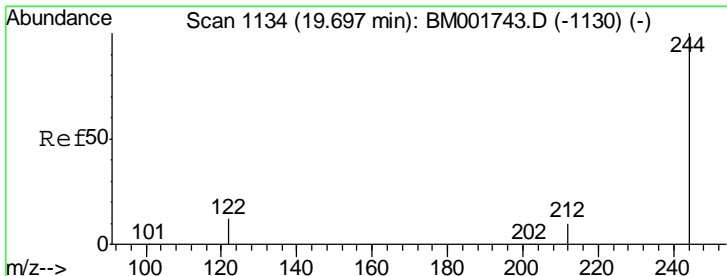
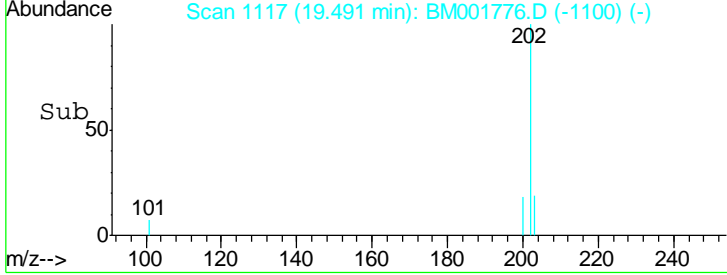
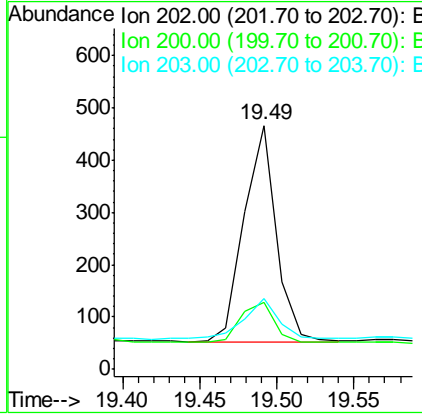
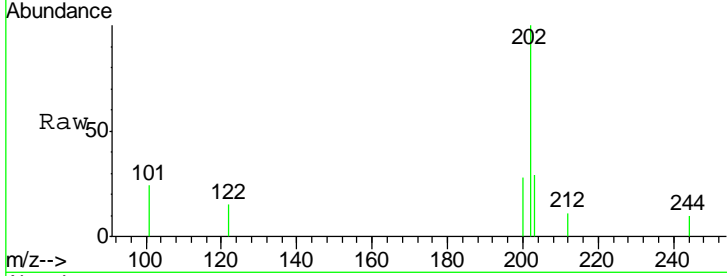


#26
 Pyrene
 Concen: 0.03 ng
 RT: 19.49 min Scan# 1117
 Delta R.T. 0.00 min
 Lab File: BM001776.D
 Acq: 22 Jun 2015 17:12

Instrument :
 BNA_M
 ClientSampled :
 C-5

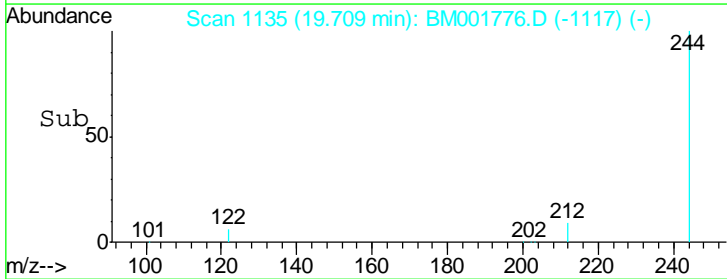
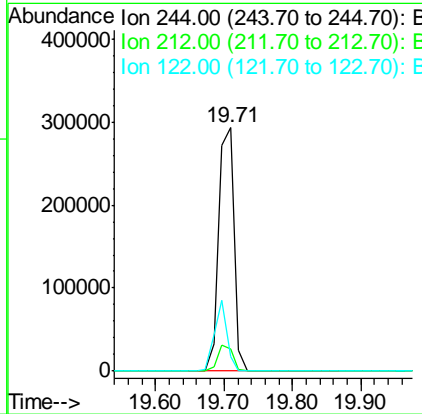
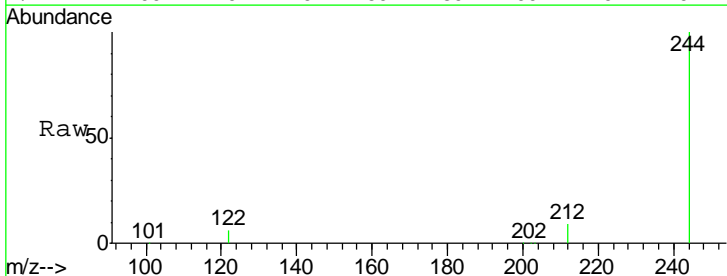
Tgt Ion	Ratio	Lower	Upper
202	100		
200	20.1	16.6	24.8
203	20.6	13.9	20.9

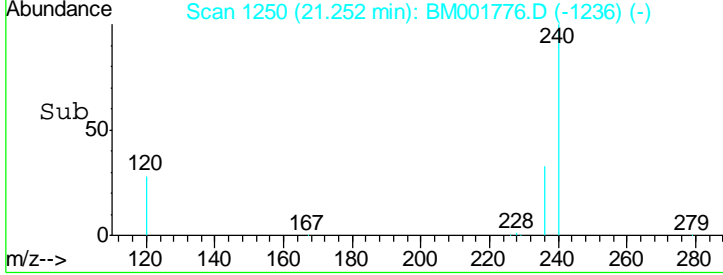
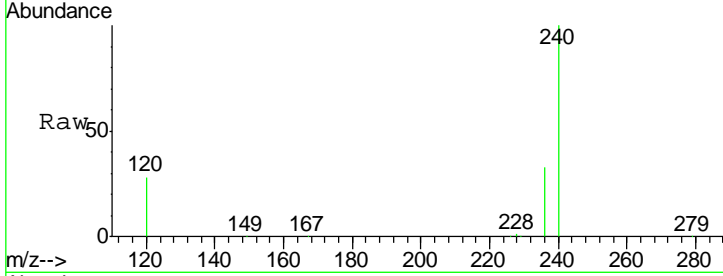
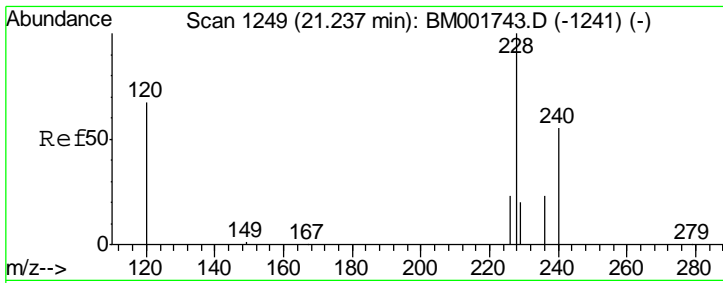
Manual Integrations
 APPROVED
 apatel
 6/23/2015 3:35:20 PM



#27
 Terphenyl-d14
 Concen: 62.06 ng
 RT: 19.71 min Scan# 1135
 Delta R.T. 0.01 min
 Lab File: BM001776.D
 Acq: 22 Jun 2015 17:12

Tgt Ion	Ratio	Lower	Upper
244	100		
212	8.9	8.6	13.0
122	6.0	10.6	15.8#



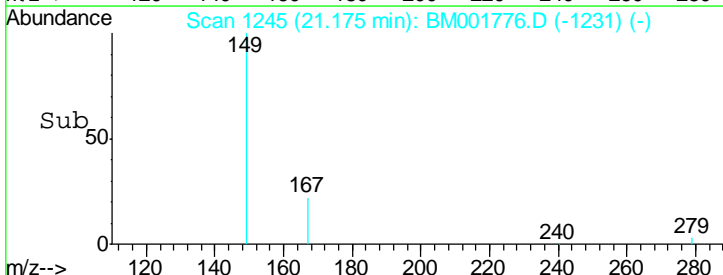
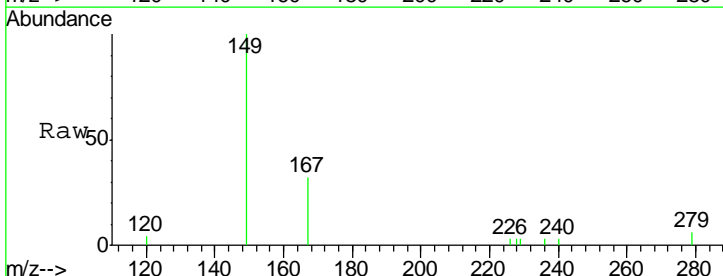
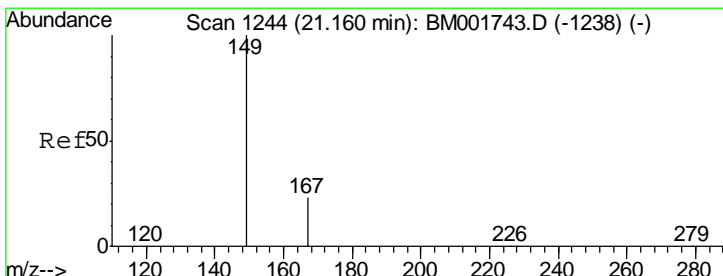
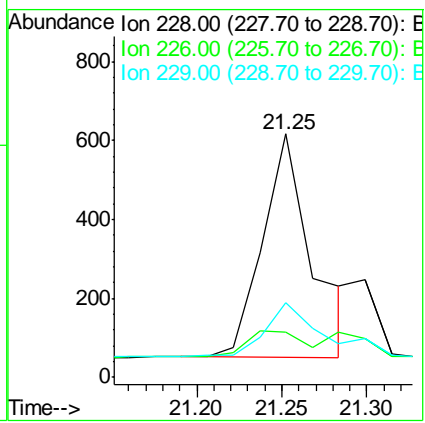


#28
 Benzo(a)anthracene
 Concen: 0.08 ng m
 RT: 21.25 min Scan# 1250
 Delta R.T. 0.02 min
 Lab File: BM001776.D
 Acq: 22 Jun 2015 17:12

Tgt Ion	Resp	Lower	Upper
228	100		
226	18.5	18.9	28.3#
229	30.8	16.6	25.0#

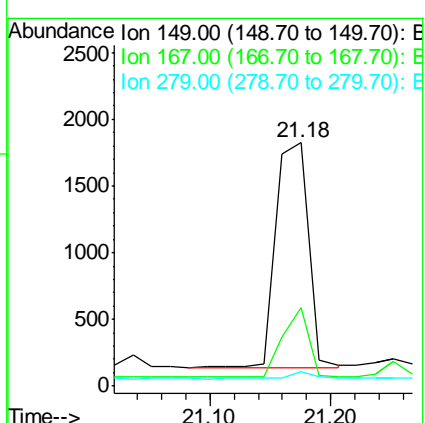
Instrument :
 BNA_M
 ClientSampled :
 C-5

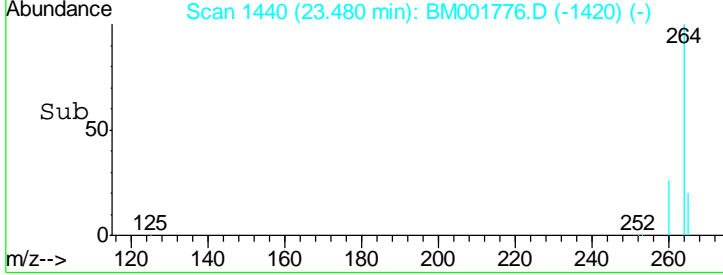
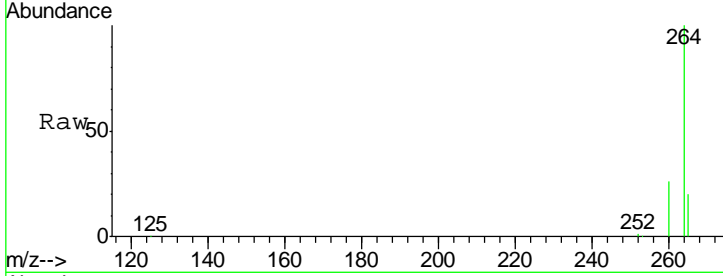
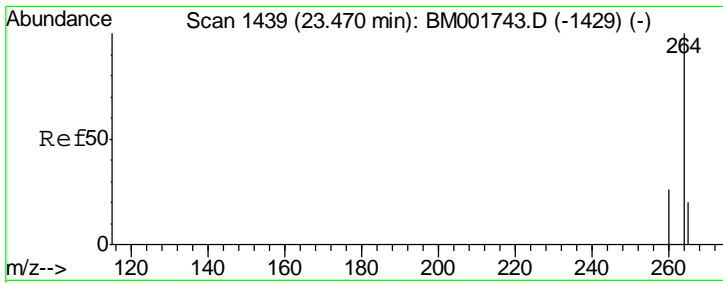
Manual Integrations
 APPROVED
 apatel
 6/23/2015 3:35:20 PM



#30
 Bis(2-ethylhexyl)phthalate
 Concen: 0.36 ng
 RT: 21.18 min Scan# 1245
 Delta R.T. 0.02 min
 Lab File: BM001776.D
 Acq: 22 Jun 2015 17:12

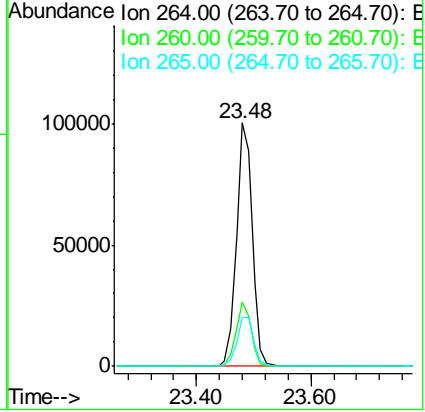
Tgt Ion	Resp	Lower	Upper
149	100		
167	24.8	19.7	29.5
279	2.5	1.6	2.4#





#32
 Perylene-d12
 Concen: 5.00 ng
 RT: 23.48 min Scan# 1440
 Delta R.T. 0.01 min
 Lab File: BM001776.D
 Acq: 22 Jun 2015 17:12

Tgt Ion	Resp	Lower	Upper
264	100		
260	26.3	20.8	31.2
265	20.1	16.8	25.2



Instrument :
 BNA_M
 ClientSampled :
 C-5

Manual Integrations
 APPROVED
 apatel
 6/23/2015 3:35:20 PM