

Data Path : Z:\HPCHEM1\BNA\_M\DATA\BM062217\  
 Data File : BM010670.D  
 Acq On : 22 Jun 2017 21:21  
 Operator : SJ/JU  
 Sample : I3558-13ME 5X  
 Misc :  
 ALS Vial : 21 Sample Multiplier: 1

Instrument :  
 BNA\_M  
 ClientSampleId :  
 F5C86ME

## Integration Parameters: LSCINT.P

Integrator: RTE  
 Smoothing : OFF Filtering: 5  
 Sampling : 1 Min Area: 1 % of largest Peak  
 Start Thrs: 0.2 Max Peaks: 100  
 Stop Thrs : 0 Peak Location: TOP

If leading or trailing edge < 100 prefer < Baseline drop else tangent >  
 Peak separation: 5

Method : Z:\HPCHEM1\BNA\_M\METHODS\SOM-EPA-BM062017.M  
 Title : SVOA CALIBRATION

Signal : TIC

peak #	R.T. min	first scan	max scan	last scan	PK TY	peak height	corr. area	corr. % max.	% of total
1	6.646	634	639	645	rBV2	26878	40852	1.03%	0.113%
2	6.998	693	699	705	rBB3	28906	41735	1.05%	0.115%
3	7.463	771	778	785	rBV	275271	414782	10.44%	1.145%
4	7.828	834	840	847	rVB	33692	49045	1.23%	0.135%
5	7.987	861	867	876	rVB	53779	84712	2.13%	0.234%
6	8.163	891	897	905	rBB3	37936	54537	1.37%	0.151%
7	8.604	967	972	982	rVB2	29027	49517	1.25%	0.137%
8	9.639	1143	1148	1157	rVB5	20036	45014	1.13%	0.124%
9	9.851	1177	1184	1190	rBB2	41165	64270	1.62%	0.177%
10	10.228	1241	1248	1251	rBV	384789	648419	16.31%	1.790%
11	10.281	1251	1257	1264	rVV	2361884	3876279	97.53%	10.698%
12	10.392	1264	1276	1287	rVB3	92635	213590	5.37%	0.589%
13	11.898	1525	1532	1539	rVB	927423	1400668	35.24%	3.866%
14	12.122	1558	1570	1577	rBV	412721	658734	16.57%	1.818%
15	12.933	1702	1708	1716	rBB	216729	313421	7.89%	0.865%
16	13.133	1736	1742	1752	rBV	70348	112211	2.82%	0.310%
17	13.263	1756	1764	1766	rBV	108656	157199	3.96%	0.434%
18	13.286	1766	1768	1774	rVB3	113276	134354	3.38%	0.371%
19	13.427	1786	1792	1797	rBV	168288	285934	7.19%	0.789%
20	13.480	1797	1801	1805	rVV	116768	157632	3.97%	0.435%
21	13.533	1805	1810	1814	rVB	95791	124478	3.13%	0.344%
22	13.669	1827	1833	1836	rBV	69871	98662	2.48%	0.272%
23	13.798	1849	1855	1858	rBV	90755	136046	3.42%	0.375%
24	13.833	1858	1861	1867	rVB	61017	80933	2.04%	0.223%
25	14.116	1900	1909	1914	rBV3	646472	1100008	27.68%	3.036%
26	14.174	1914	1919	1927	rVV	746224	1126234	28.34%	3.108%
27	14.245	1927	1931	1936	rVB	37119	49546	1.25%	0.137%
28	14.322	1939	1944	1949	rBV4	48121	74215	1.87%	0.205%
29	14.427	1953	1962	1967	rVB4	37121	67642	1.70%	0.187%
30	14.516	1967	1977	1986	rBV	707905	1023893	25.76%	2.826%
31	14.598	1986	1991	1995	rVB3	30554	46195	1.16%	0.127%
32	14.739	2007	2015	2020	rBV3	27753	43361	1.09%	0.120%
33	14.792	2020	2024	2030	rVB2	33901	42831	1.08%	0.118%
34	15.110	2074	2078	2083	rBV	137892	191163	4.81%	0.528%

Data Path : Z:\HPCHEM1\BNA\_M\DATA\BM062217\  
 Data File : BM010670.D  
 Acq On : 22 Jun 2017 21:21  
 Operator : SJ/JU  
 Sample : I3558-13ME 5X  
 Misc :  
 ALS Vial : 21 Sample Multiplier: 1

Instrument :  
 BNA\_M  
 ClientSampleId :  
 F5C86ME

## Integration Parameters: LSCINT.P

Integrator: RTE  
 Smoothing : OFF  
 Sampling : 1  
 Start Thrs: 0.2  
 Stop Thrs : 0

Filtering: 5  
 Min Area: 1 % of largest Peak  
 Max Peaks: 100  
 Peak Location: TOP

If leading or trailing edge < 100 prefer < Baseline drop else tangent >  
 Peak separation: 5

Method : Z:\HPCHEM1\BNA\_M\METHODS\SOM-EPA-BM062017.M  
 Title : SVOA CALIBRATION

35	15.169	2083	2088	2093	rVV	931700	1259629	31.69%	3.476%
36	15.292	2106	2109	2112	rVV2	44746	59455	1.50%	0.164%
37	15.333	2112	2116	2120	rVB	100300	131825	3.32%	0.364%
38	15.416	2127	2130	2134	rVB	40991	52240	1.31%	0.144%
39	15.468	2134	2139	2147	rVB	130844	183944	4.63%	0.508%
40	15.610	2151	2163	2172	rBV	139772	282671	7.11%	0.780%
41	15.704	2172	2179	2184	rVB4	21024	41029	1.03%	0.113%
42	15.968	2218	2224	2231	rBV5	43429	67560	1.70%	0.186%
43	16.063	2236	2240	2249	rVB2	31382	51041	1.28%	0.141%
44	16.174	2249	2259	2264	rBV2	90985	190024	4.78%	0.524%
45	16.227	2264	2268	2274	rVB3	32559	44104	1.11%	0.122%
46	16.327	2280	2285	2291	rVB4	37300	63231	1.59%	0.175%
47	16.604	2326	2332	2338	rBV2	45487	83522	2.10%	0.231%
48	16.680	2341	2345	2356	rVB	187615	287438	7.23%	0.793%
49	16.868	2369	2377	2380	rBV	951634	1332878	33.54%	3.679%
50	16.910	2380	2384	2390	rVV	2942413	3974551	100.00%	10.970%
51	16.968	2390	2394	2396	rVV2	186618	275586	6.93%	0.761%
52	16.998	2396	2399	2406	rVB	459903	595078	14.97%	1.642%
53	17.063	2406	2410	2416	rBV4	31802	48458	1.22%	0.134%
54	17.274	2441	2446	2451	rBV	305133	387104	9.74%	1.068%
55	17.398	2463	2467	2471	rBV3	34161	41691	1.05%	0.115%
56	17.451	2472	2476	2485	rVB6	22256	44841	1.13%	0.124%
57	17.745	2521	2526	2530	rBV	177528	240315	6.05%	0.663%
58	17.792	2530	2534	2540	rVB	290897	403771	10.16%	1.114%
59	17.868	2541	2547	2553	rBV	108624	161210	4.06%	0.445%
60	17.939	2553	2559	2563	rBV2	347248	540014	13.59%	1.490%
61	17.974	2563	2565	2572	rVB2	96396	109164	2.75%	0.301%
62	18.092	2582	2585	2590	rVB2	33481	40385	1.02%	0.111%
63	18.251	2607	2612	2616	rBV	130759	176719	4.45%	0.488%
64	18.504	2647	2655	2659	rBV4	34824	54248	1.36%	0.150%
65	18.551	2659	2663	2666	rVV4	29282	41498	1.04%	0.115%
66	18.674	2678	2684	2690	rBV3	63193	123708	3.11%	0.341%
67	18.739	2690	2695	2698	rBV4	38236	57419	1.44%	0.158%
68	18.815	2704	2708	2716	rVB8	24017	62793	1.58%	0.173%
69	18.939	2723	2729	2735	rBV	1806081	2343109	58.95%	6.467%
70	19.186	2766	2771	2776	rVB	52638	72387	1.82%	0.200%
71	19.274	2782	2786	2788	rBV3	481773	667364	16.79%	1.842%

Data Path : Z:\HPCHEM1\BNA\_M\DATA\BM062217\  
 Data File : BM010670.D  
 Acq On : 22 Jun 2017 21:21  
 Operator : SJ/JU  
 Sample : I3558-13ME 5X  
 Misc :  
 ALS Vial : 21 Sample Multiplier: 1

Instrument :  
 BNA\_M  
 ClientSampleId :  
 F5C86ME

## Integration Parameters: LSCINT.P

Integrator: RTE  
 Smoothing : OFF  
 Sampling : 1  
 Start Thrs: 0.2  
 Stop Thrs : 0

Filtering: 5  
 Min Area: 1 % of largest Peak  
 Max Peaks: 100  
 Peak Location: TOP

If leading or trailing edge < 100 prefer < Baseline drop else tangent >  
 Peak separation: 5

Method : Z:\HPCHEM1\BNA\_M\METHODS\SOM-EPA-BM062017.M  
 Title : SVOA CALIBRATION

72	19.304	2788	2791	2796	rVV	1057891	1433845	36.08%	3.957%
73	19.380	2800	2804	2812	rVB3	66004	119414	3.00%	0.330%
74	19.486	2816	2822	2829	rBV	77059	113845	2.86%	0.314%
75	19.633	2840	2847	2848	rBV2	67029	104463	2.63%	0.288%
76	19.686	2853	2856	2860	rVB	46545	60086	1.51%	0.166%
77	19.751	2860	2867	2868	rBV3	39843	63115	1.59%	0.174%
78	19.809	2872	2877	2882	rVB	246336	333475	8.39%	0.920%
79	19.909	2889	2894	2898	rBV	280943	348720	8.77%	0.962%
80	19.962	2898	2903	2908	rVV3	100468	167785	4.22%	0.463%
81	20.151	2931	2935	2940	rBV3	38721	59234	1.49%	0.163%
82	20.403	2975	2978	2982	rBV5	28675	40942	1.03%	0.113%
83	20.521	2994	2998	3002	rBV5	45072	71570	1.80%	0.198%
84	20.727	3026	3033	3036	rBV	80919	129147	3.25%	0.356%
85	20.768	3036	3040	3043	rVV	74451	101968	2.57%	0.281%
86	20.815	3043	3048	3052	rVB3	61138	111387	2.80%	0.307%
87	21.080	3085	3093	3097	rBV2	1475468	2310927	58.14%	6.378%
88	21.115	3097	3099	3108	rVB	321947	394095	9.92%	1.088%
89	21.233	3115	3119	3123	rVB2	77483	88998	2.24%	0.246%
90	21.345	3134	3138	3141	rVB	42913	55143	1.39%	0.152%
91	21.392	3141	3146	3152	rBV2	62120	103587	2.61%	0.286%
92	21.621	3179	3185	3190	rVB3	55462	90583	2.28%	0.250%
93	21.668	3190	3193	3202	rBV6	27701	58652	1.48%	0.162%
94	22.250	3288	3292	3297	rVB2	60893	94489	2.38%	0.261%
95	22.586	3344	3349	3361	rVB	119223	379598	9.55%	1.048%
96	22.750	3371	3377	3378	rBV5	107199	157564	3.96%	0.435%
97	23.033	3422	3425	3429	rBV	45598	66965	1.68%	0.185%
98	23.086	3429	3434	3437	rVV	103936	174845	4.40%	0.483%
99	23.127	3438	3441	3449	rVB2	94994	191408	4.82%	0.528%
100	23.221	3450	3457	3463	rBV	685769	1206755	30.36%	3.331%

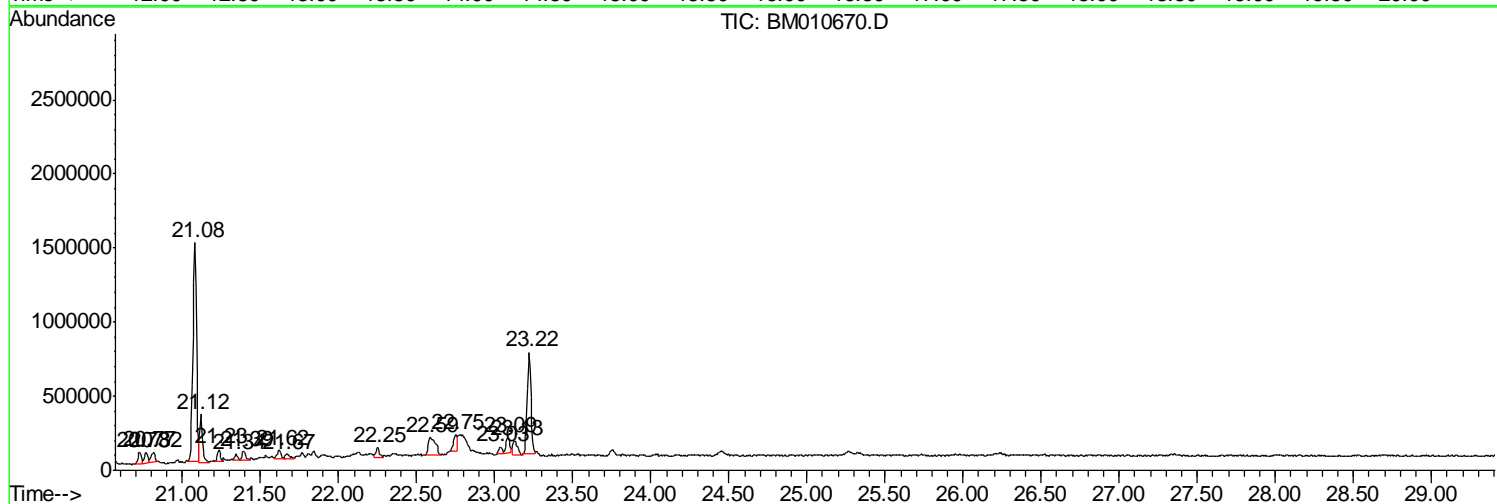
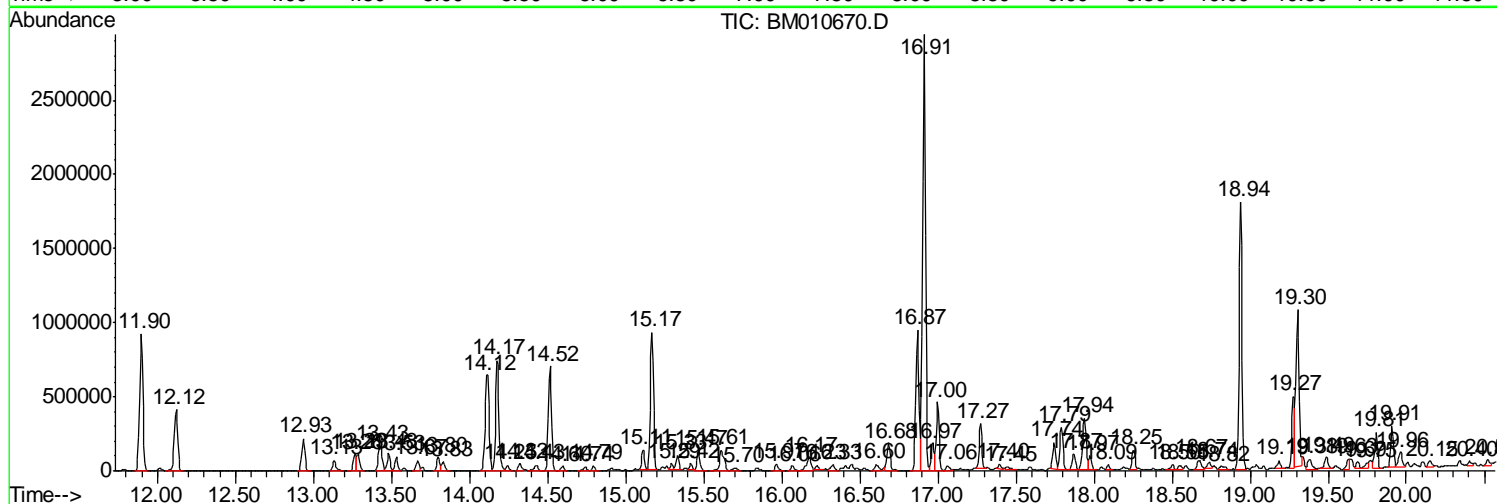
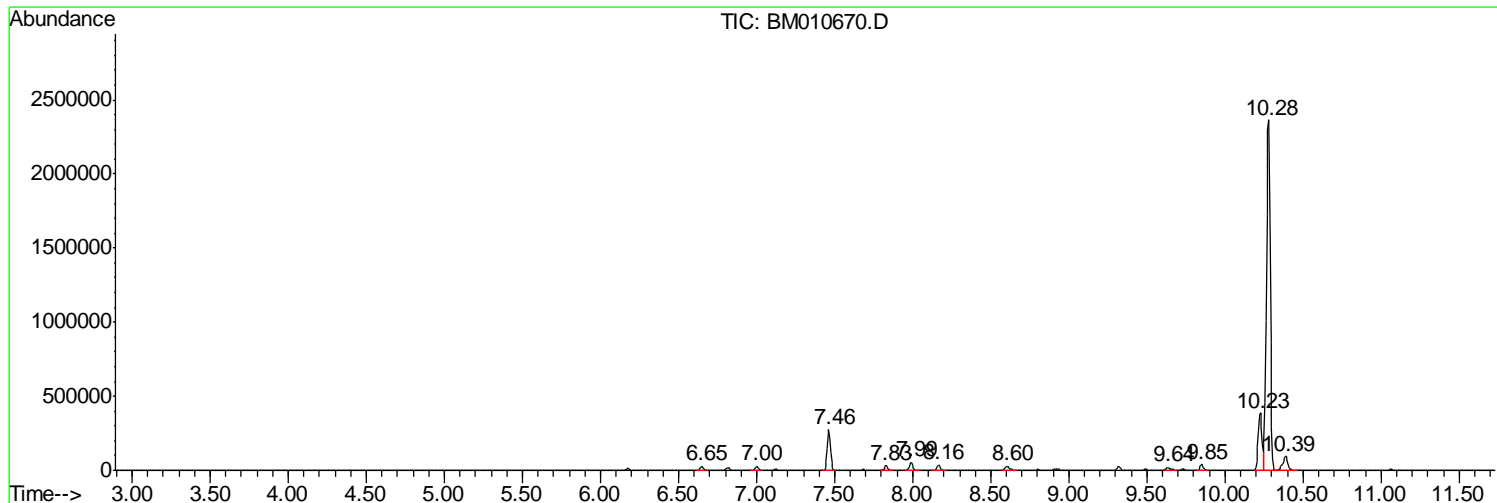
Sum of corrected areas: 36232721

Data Path : Z:\HPCHEM1\BNA\_M\DATA\BM062217\  
 Data File : BM010670.D  
 Acq On : 22 Jun 2017 21:21  
 Operator : SJ/JU  
 Sample : I3558-13ME 5X  
 Misc :  
 ALS Vial : 21 Sample Multiplier: 1

Instrument :  
 BNA\_M  
 ClientSampleId :  
 F5C86ME

Quant Method : Z:\HPCHEM1\BNA\_M\METHODS\SOM-EPA-BM062017.M  
 Quant Title : SVOA CALIBRATION

TIC Library : C:\DATABASE\NIST11.L  
 TIC Integration Parameters: LSCINT.P



Data Path : Z:\HPCHEM1\BNA\_M\DATA\BM062217\  
 Data File : BM010670.D  
 Acq On : 22 Jun 2017 21:21  
 Operator : SJ/JU  
 Sample : I3558-13ME 5X  
 Misc :  
 ALS Vial : 21 Sample Multiplier: 1

Instrument :  
 BNA\_M  
 ClientSampleID :  
 F5C86ME

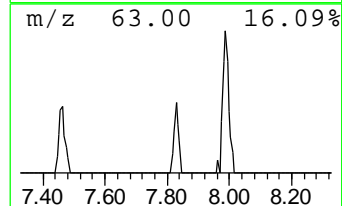
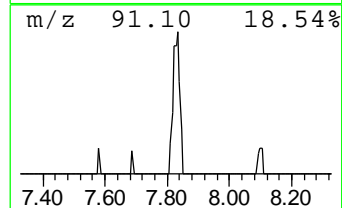
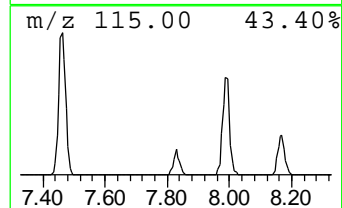
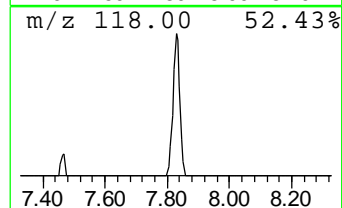
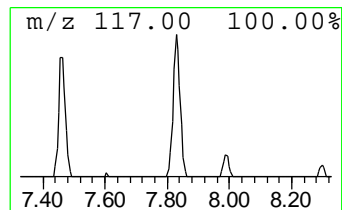
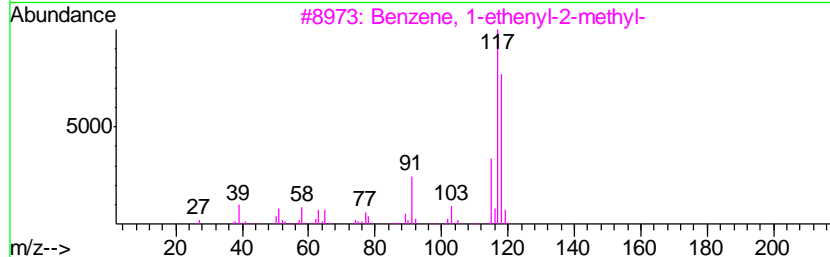
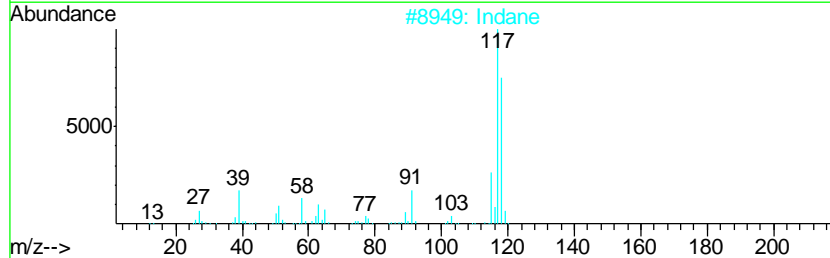
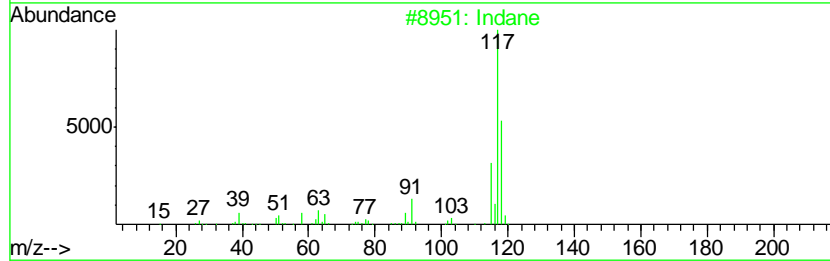
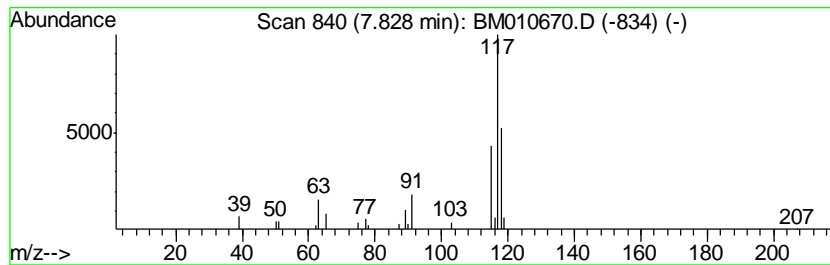
Quant Method : Z:\HPCHEM1\BNA\_M\METHODS\SOM-EPA-BM062017.M  
 Quant Title : SVOA CALIBRATION

TIC Library : C:\DATABASE\NIST11.L  
 TIC Integration Parameters: LSCINT.P

\*\*\*\*\*  
 Peak Number 1 Indane Concentration Rank 20

R.T.	EstConc	Area	Relative to ISTD	R.T.
7.83	2.36 ng/ul	49045	1,4-Dichlorobenzene-d4	7.46

Hit#	of	Tentative ID	MW	MolForm	CAS#	Qual
1	5	Indane	118	C9H10	000496-11-7	64
2		Indane	118	C9H10	000496-11-7	59
3		Benzene, 1-ethenyl-2-methyl-	118	C9H10	000611-15-4	58
4		Tetracyclo[3.3.1.0(2,8).0(4,6)]-...	118	C9H10	1000191-13-7	53
5		Benzene, cyclopropyl-	118	C9H10	000873-49-4	50



Data Path : Z:\HPCHEM1\BNA\_M\DATA\BM062217\  
 Data File : BM010670.D  
 Acq On : 22 Jun 2017 21:21  
 Operator : SJ/JU  
 Sample : I3558-13ME 5X  
 Misc :  
 ALS Vial : 21 Sample Multiplier: 1

Instrument :  
 BNA\_M  
 ClientSampled :  
 F5C86ME

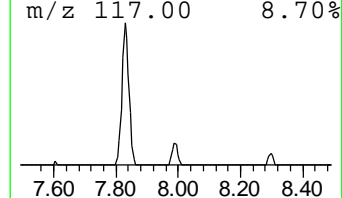
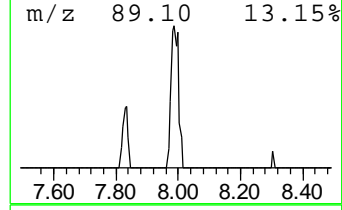
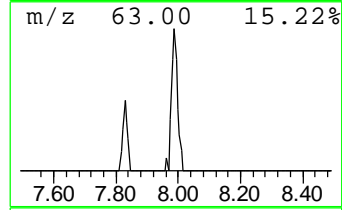
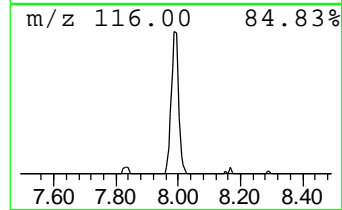
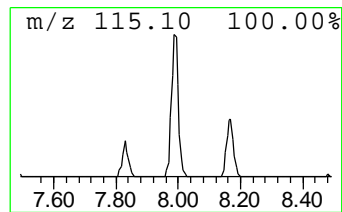
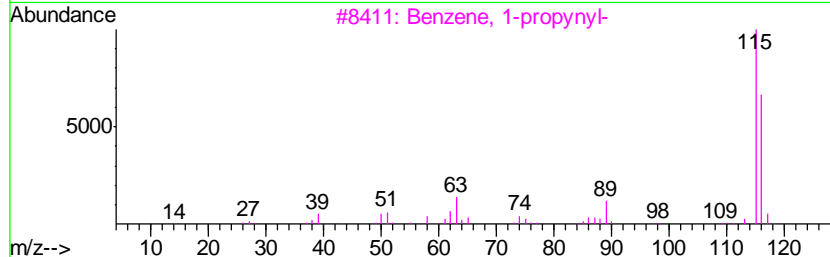
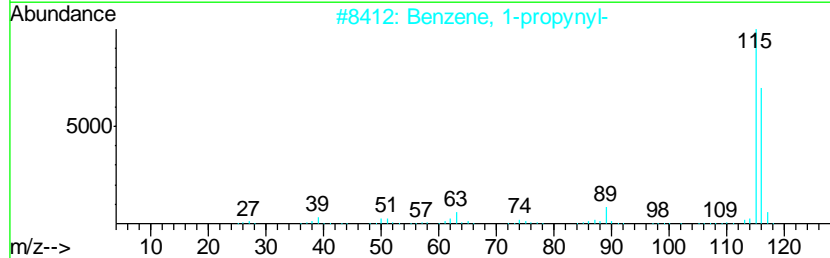
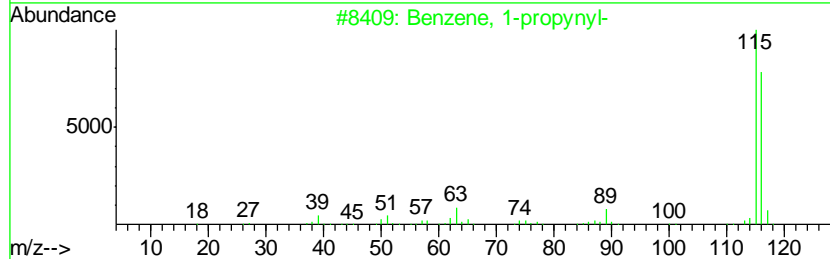
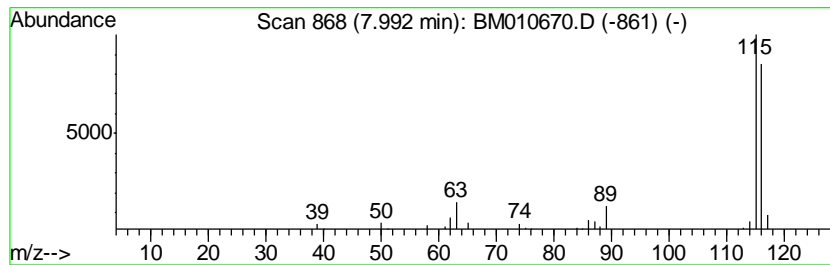
Quant Method : Z:\HPCHEM1\BNA\_M\METHODS\SOM-EPA-BM062017.M  
 Quant Title : SVOA CALIBRATION

TIC Library : C:\DATABASE\NIST11.L  
 TIC Integration Parameters: LSCINT.P

\*\*\*\*\*  
 Peak Number 2 Benzene, 1-propynyl- Concentration Rank 7

R.T.	EstConc	Area	Relative to ISTD	R.T.
7.99	4.08 ng/ul	84712	1,4-Dichlorobenzene-d4	7.46

Hit#	of	Tentative ID	MW	MolForm	CAS#	Qual
1	5	Benzene, 1-propynyl-	116	C9H8	000673-32-5	91
2		Benzene, 1-propynyl-	116	C9H8	000673-32-5	91
3		Benzene, 1-propynyl-	116	C9H8	000673-32-5	91
4		3-Methylphenylacetylene	116	C9H8	000766-82-5	91
5		1-Propyne, 3-phenyl-	116	C9H8	010147-11-2	90



Data Path : Z:\HPCHEM1\BNA\_M\DATA\BM062217\  
 Data File : BM010670.D  
 Acq On : 22 Jun 2017 21:21  
 Operator : SJ/JU  
 Sample : I3558-13ME 5X  
 Misc :  
 ALS Vial : 21 Sample Multiplier: 1

Instrument :  
 BNA\_M  
 ClientSampleID :  
 F5C86ME

Quant Method : Z:\HPCHEM1\BNA\_M\METHODS\SOM-EPA-BM062017.M  
 Quant Title : SVOA CALIBRATION

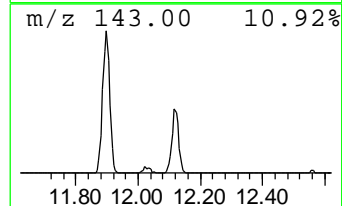
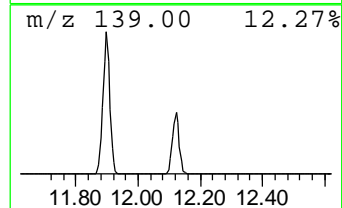
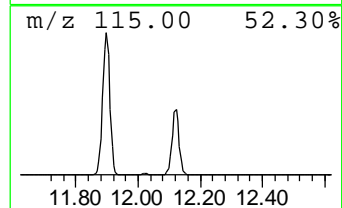
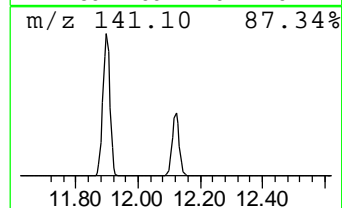
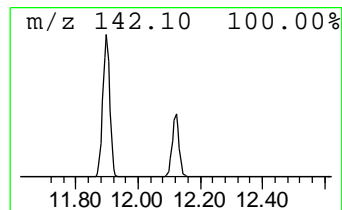
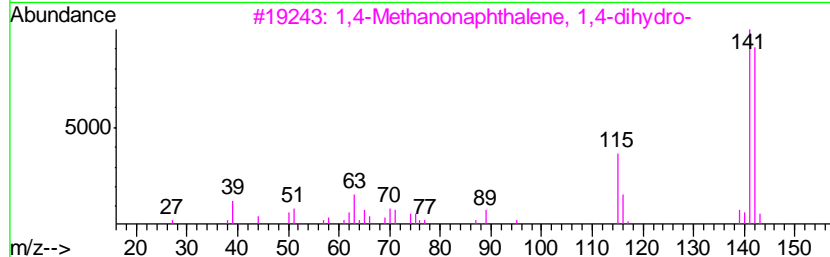
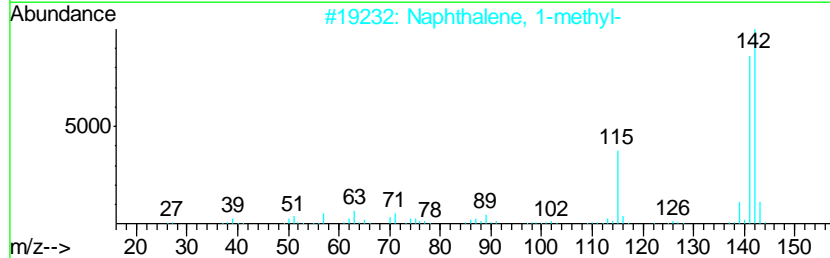
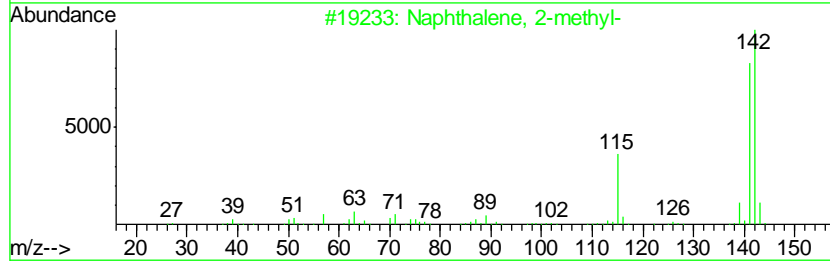
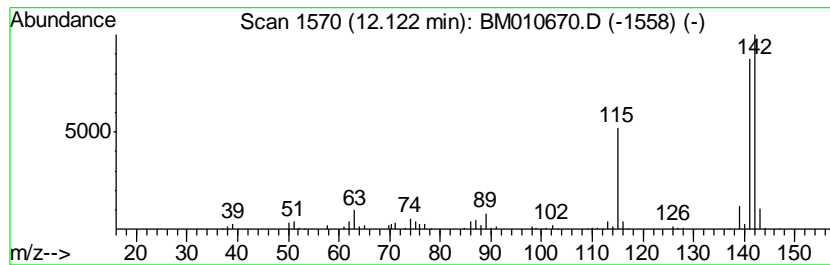
TIC Library : C:\DATABASE\NIST11.L  
 TIC Integration Parameters: LSCINT.P

\*\*\*\*\*  
 Peak Number 3 Naphthalene, 1-methyl- Concentration Rank 1

R.T.	EstConc	Area	Relative to ISTD	R.T.
12.12	20.32 ng/ul	658734	Naphthalene-d8	10.23

Hit#	of	Tentative ID	MW	MolForm	CAS#	Qual
1	5	Naphthalene, 2-methyl-	142	C11H10	000091-57-6	97
2		Naphthalene, 1-methyl-	142	C11H10	000090-12-0	97
3		1,4-Methanonaphthalene, 1,4-dihy...	142	C11H10	004453-90-1	91
4		Naphthalene, 1-methyl-	142	C11H10	000090-12-0	90
5		Naphthalene, 1-methyl-	142	C11H10	000090-12-0	90



Data Path : Z:\HPCHEM1\BNA\_M\DATA\BM062217\  
 Data File : BM010670.D  
 Acq On : 22 Jun 2017 21:21  
 Operator : SJ/JU  
 Sample : I3558-13ME 5X  
 Misc :  
 ALS Vial : 21 Sample Multiplier: 1

Instrument :  
 BNA\_M  
 ClientSampleID :  
 F5C86ME

Quant Method : Z:\HPCHEM1\BNA\_M\METHODS\SOM-EPA-BM062017.M  
 Quant Title : SVOA CALIBRATION

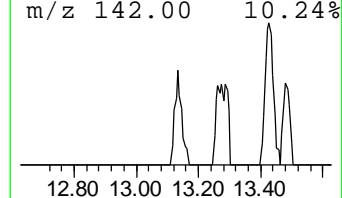
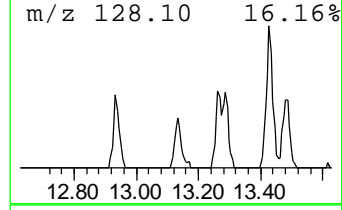
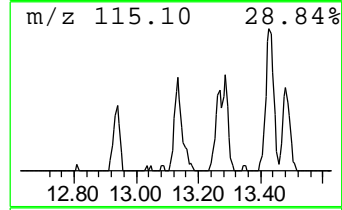
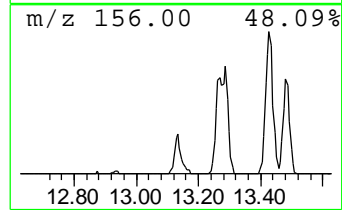
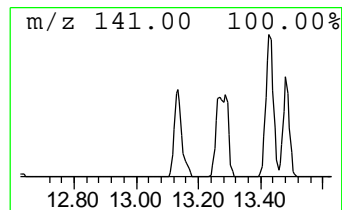
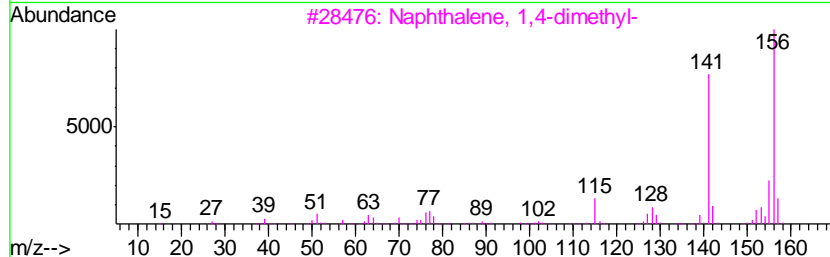
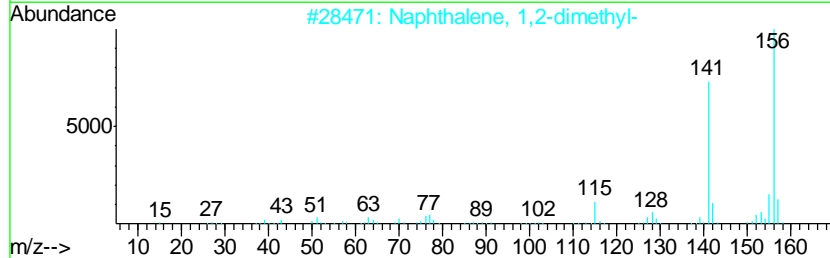
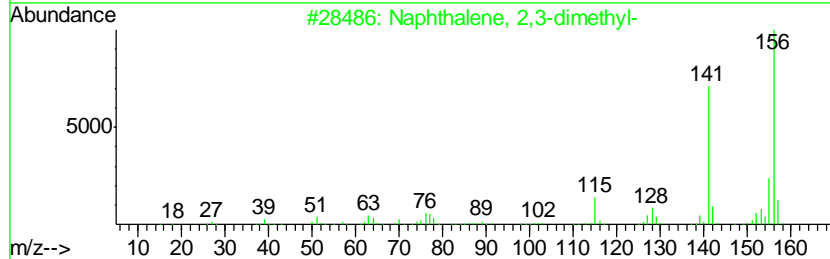
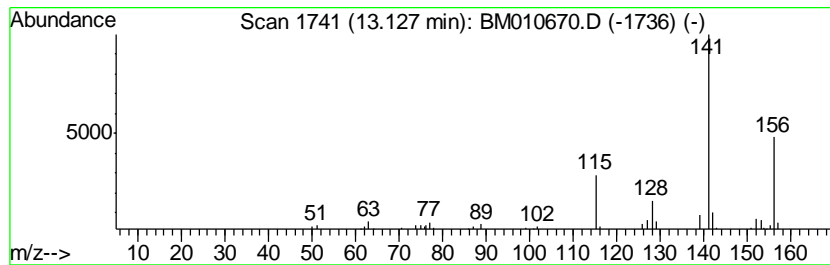
TIC Library : C:\DATABASE\NIST11.L  
 TIC Integration Parameters: LSCINT.P

\*\*\*\*\*  
 Peak Number 4 Naphthalene, 2,3-dimethyl- Concentration Rank 21

R.T.	EstConc	Area	Relative to ISTD	R.T.
13.13	2.04 ng/ul	112211	Acenaphthene-d10	14.11

Hit#	of	Tentative ID	MW	MolForm	CAS#	Qual
1	5	Naphthalene, 2,3-dimethyl-	156	C12H12	000581-40-8	94
2		Naphthalene, 1,2-dimethyl-	156	C12H12	000573-98-8	91
3		Naphthalene, 1,4-dimethyl-	156	C12H12	000571-58-4	91
4		Naphthalene, 1,2-dimethyl-	156	C12H12	000573-98-8	91
5		Naphthalene, 2,3-dimethyl-	156	C12H12	000581-40-8	90





Data Path : Z:\HPCHEM1\BNA\_M\DATA\BM062217\  
 Data File : BM010670.D  
 Acq On : 22 Jun 2017 21:21  
 Operator : SJ/JU  
 Sample : I3558-13ME 5X  
 Misc :  
 ALS Vial : 21 Sample Multiplier: 1

Instrument :  
 BNA\_M  
 ClientSampleId :  
 F5C86ME

Quant Method : Z:\HPCHEM1\BNA\_M\METHODS\SOM-EPA-BM062017.M  
 Quant Title : SVOA CALIBRATION

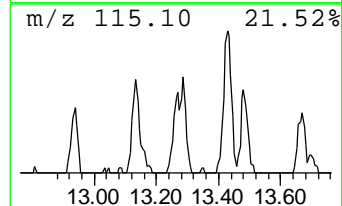
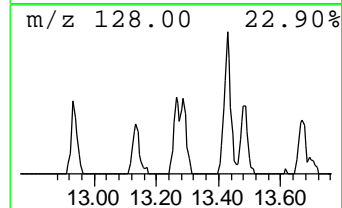
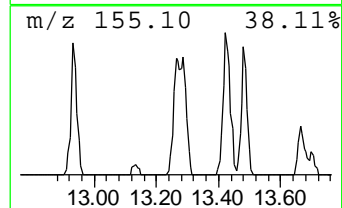
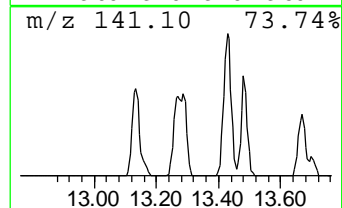
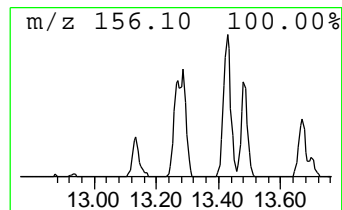
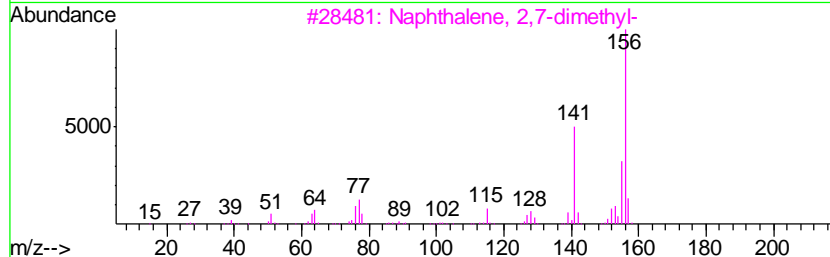
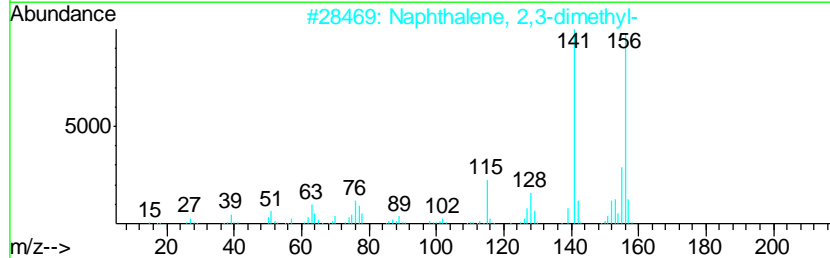
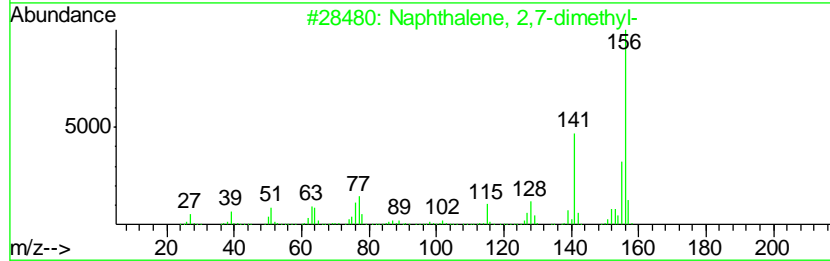
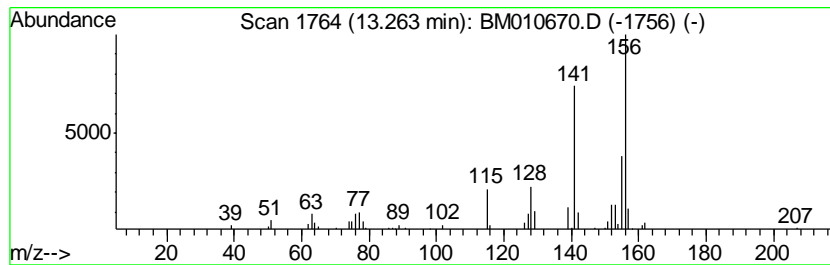
TIC Library : C:\DATABASE\NIST11.L  
 TIC Integration Parameters: LSCINT.P

\*\*\*\*\*  
 Peak Number 5 Naphthalene, 2,7-dimethyl- Concentration Rank 13

R.T.	EstConc	Area	Relative to ISTD	R.T.
13.26	2.86 ng/ul	157199	Acenaphthene-d10	14.11

Hit#	of	Tentative ID	MW	MolForm	CAS#	Qual
1	5	Naphthalene, 2,7-dimethyl-	156	C12H12	000582-16-1	97
2		Naphthalene, 2,3-dimethyl-	156	C12H12	000581-40-8	96
3		Naphthalene, 2,7-dimethyl-	156	C12H12	000582-16-1	95
4		Naphthalene, 1,6-dimethyl-	156	C12H12	000575-43-9	95
5		Naphthalene, 1,6-dimethyl-	156	C12H12	000575-43-9	95



Data Path : Z:\HPCHEM1\BNA\_M\DATA\BM062217\  
 Data File : BM010670.D  
 Acq On : 22 Jun 2017 21:21  
 Operator : SJ/JU  
 Sample : I3558-13ME 5X  
 Misc :  
 ALS Vial : 21 Sample Multiplier: 1

Instrument :  
 BNA\_M  
 ClientSampled :  
 F5C86ME

Quant Method : Z:\HPCHEM1\BNA\_M\METHODS\SOM-EPA-BM062017.M  
 Quant Title : SVOA CALIBRATION

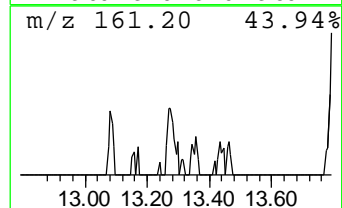
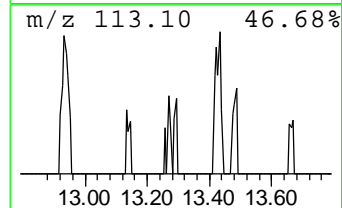
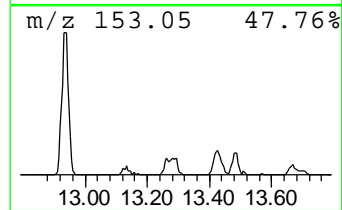
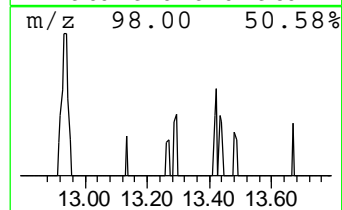
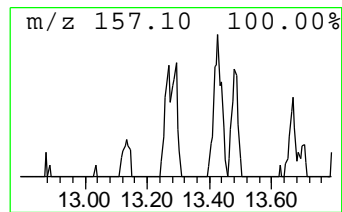
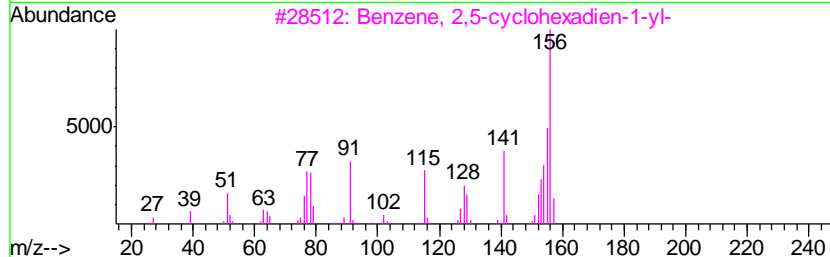
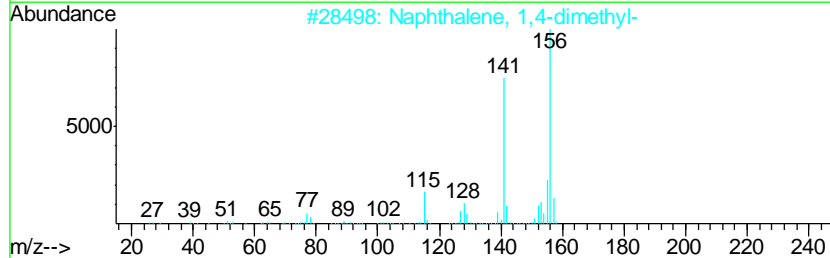
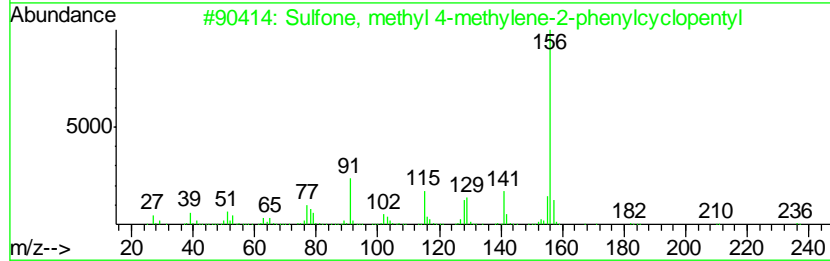
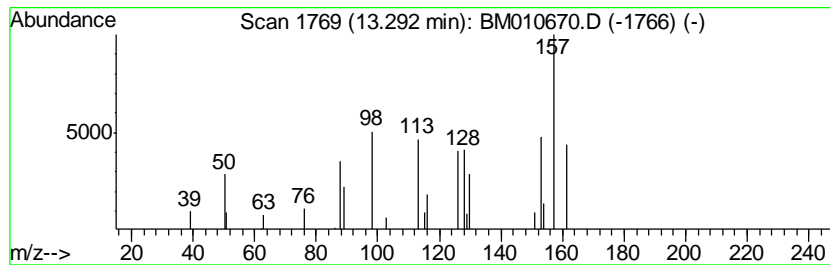
TIC Library : C:\DATABASE\NIST11.L  
 TIC Integration Parameters: LSCINT.P

\*\*\*\*\*  
 Peak Number 6 Sulfone, methyl 4-methylene... Concentration Rank 17

R.T.	EstConc	Area	Relative to ISTD	R.T.
13.29	2.44 ng/ul	134354	Acenaphthene-d10	14.11

Hit#	of	Tentative ID	MW	MolForm	CAS#	Qual
1	5	Sulfone, methyl 4-methylene-2-ph...	236	C13H16O2S	1000150-80-3	78
2		Naphthalene, 1,4-dimethyl-	156	C12H12	000571-58-4	64
3		Benzene, 2,5-cyclohexadien-1-yl-	156	C12H12	004794-05-2	53
4		Benzene, 2,4-cyclohexadien-1-yl-	156	C12H12	021473-05-2	52
5		Benzene, 1,3-cyclohexadien-1-yl-	156	C12H12	015619-32-6	52



Data Path : Z:\HPCHEM1\BNA\_M\DATA\BM062217\  
 Data File : BM010670.D  
 Acq On : 22 Jun 2017 21:21  
 Operator : SJ/JU  
 Sample : I3558-13ME 5X  
 Misc :  
 ALS Vial : 21 Sample Multiplier: 1

Instrument :  
 BNA\_M  
 ClientSampleID :  
 F5C86ME

Quant Method : Z:\HPCHEM1\BNA\_M\METHODS\SOM-EPA-BM062017.M  
 Quant Title : SVOA CALIBRATION

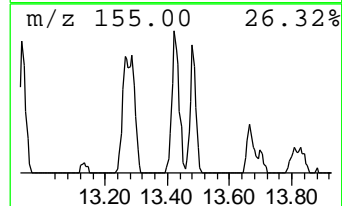
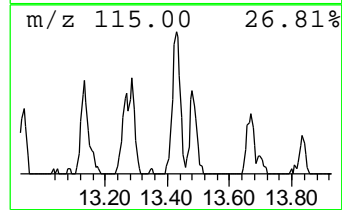
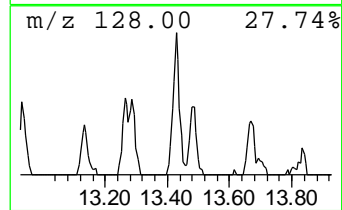
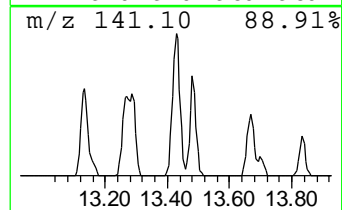
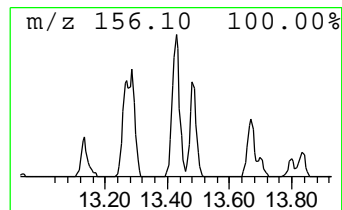
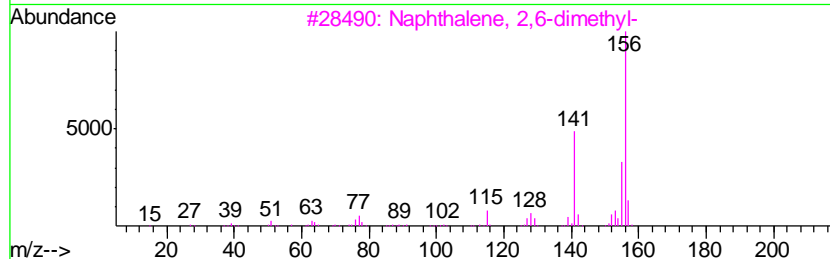
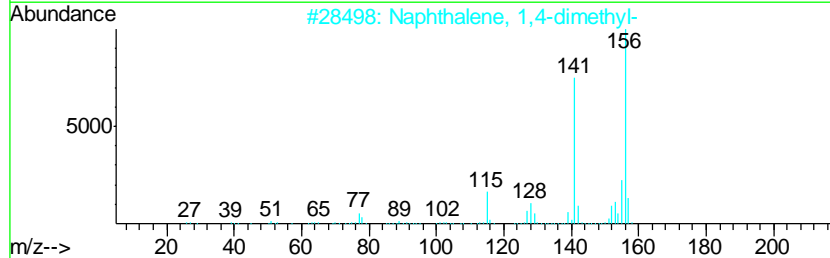
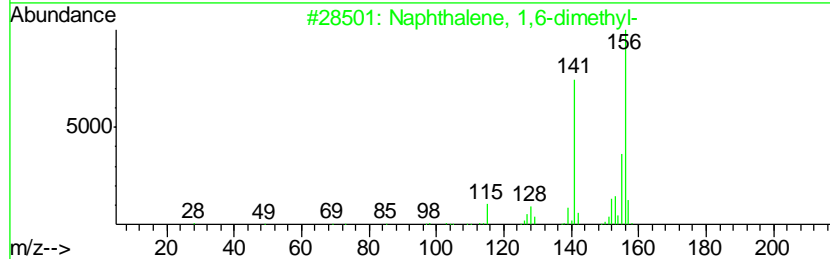
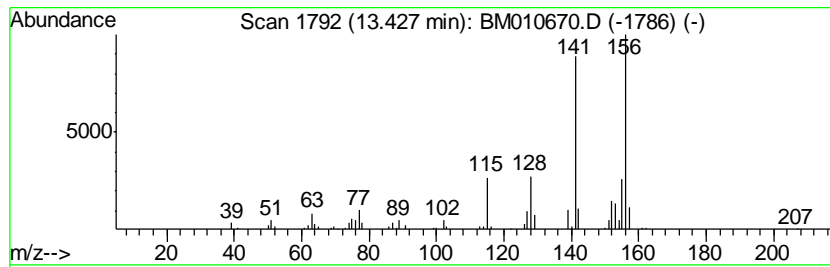
TIC Library : C:\DATABASE\NIST11.L  
 TIC Integration Parameters: LSCINT.P

\*\*\*\*\*  
 Peak Number 7 Naphthalene, 1,6-dimethyl- Concentration Rank 4

R.T.	EstConc	Area	Relative to ISTD	R.T.
13.43	5.20 ng/ul	285934	Acenaphthene-d10	14.11

Hit#	of	Tentative ID	MW	MolForm	CAS#	Qual
1	5	Naphthalene, 1,6-dimethyl-	156	C12H12	000575-43-9	95
2		Naphthalene, 1,4-dimethyl-	156	C12H12	000571-58-4	95
3		Naphthalene, 2,6-dimethyl-	156	C12H12	000581-42-0	95
4		Naphthalene, 1,7-dimethyl-	156	C12H12	000575-37-1	95
5		Naphthalene, 1,7-dimethyl-	156	C12H12	000575-37-1	94



Data Path : Z:\HPCHEM1\BNA\_M\DATA\BM062217\  
 Data File : BM010670.D  
 Acq On : 22 Jun 2017 21:21  
 Operator : SJ/JU  
 Sample : I3558-13ME 5X  
 Misc :  
 ALS Vial : 21 Sample Multiplier: 1

Instrument :  
 BNA\_M  
 ClientSampled :  
 F5C86ME

Quant Method : Z:\HPCHEM1\BNA\_M\METHODS\SOM-EPA-BM062017.M  
 Quant Title : SVOA CALIBRATION

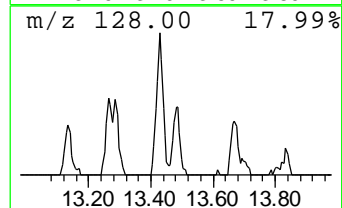
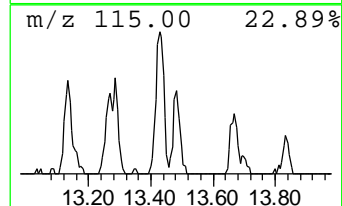
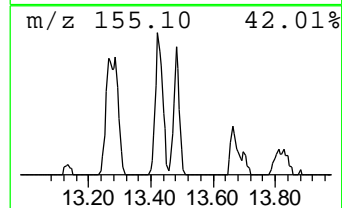
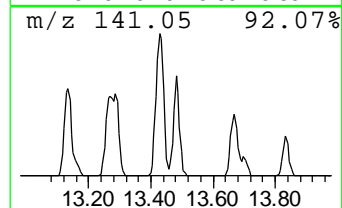
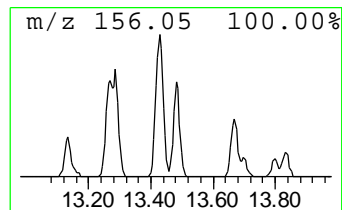
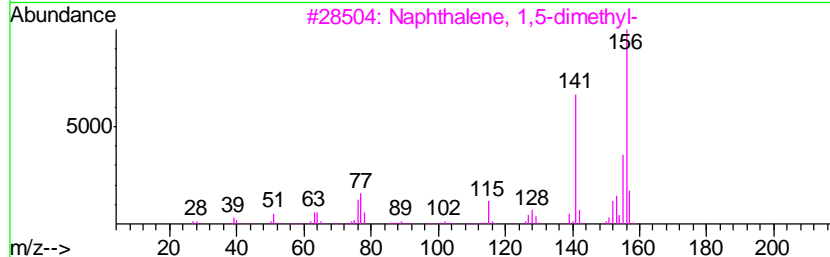
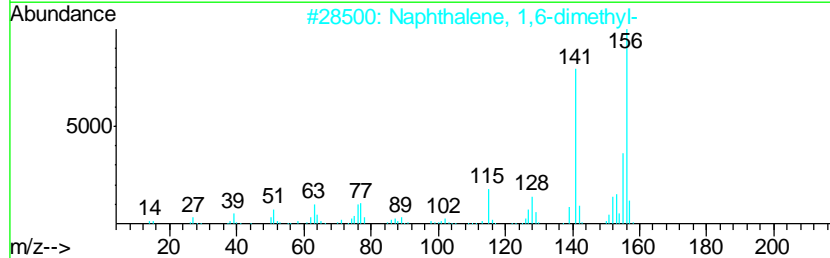
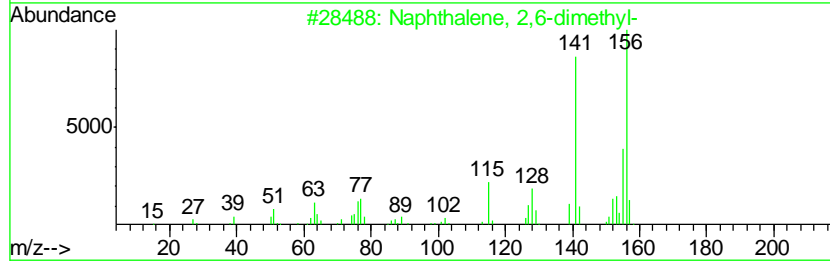
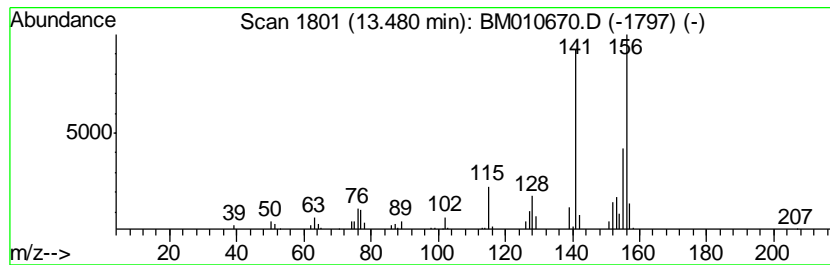
TIC Library : C:\DATABASE\NIST11.L  
 TIC Integration Parameters: LSCINT.P

\*\*\*\*\*  
 Peak Number 8 Naphthalene, 2,6-dimethyl- Concentration Rank 12

R.T.	EstConc	Area	Relative to ISTD	R.T.
13.48	2.87 ng/ul	157632	Acenaphthene-d10	14.11

Hit#	of	Tentative ID	MW	MolForm	CAS#	Qual
1	5	Naphthalene, 2,6-dimethyl-	156	C12H12	000581-42-0	98
2		Naphthalene, 1,6-dimethyl-	156	C12H12	000575-43-9	95
3		Naphthalene, 1,5-dimethyl-	156	C12H12	000571-61-9	95
4		Naphthalene, 2,6-dimethyl-	156	C12H12	000581-42-0	95
5		Naphthalene, 1,6-dimethyl-	156	C12H12	000575-43-9	94



Data Path : Z:\HPCHEM1\BNA\_M\DATA\BM062217\  
 Data File : BM010670.D  
 Acq On : 22 Jun 2017 21:21  
 Operator : SJ/JU  
 Sample : I3558-13ME 5X  
 Misc :  
 ALS Vial : 21 Sample Multiplier: 1

Instrument :  
 BNA\_M  
 ClientSampleID :  
 F5C86ME

Quant Method : Z:\HPCHEM1\BNA\_M\METHODS\SOM-EPA-BM062017.M  
 Quant Title : SVOA CALIBRATION

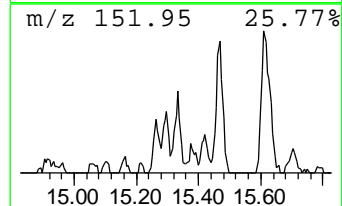
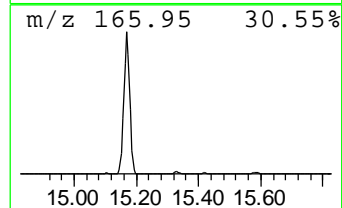
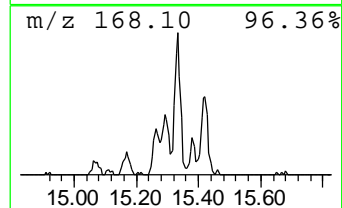
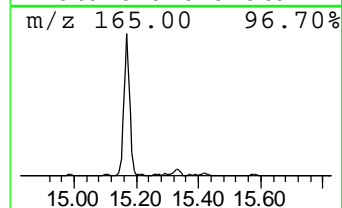
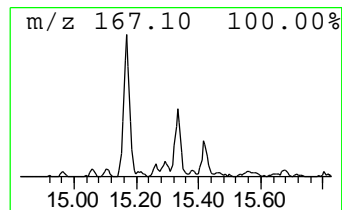
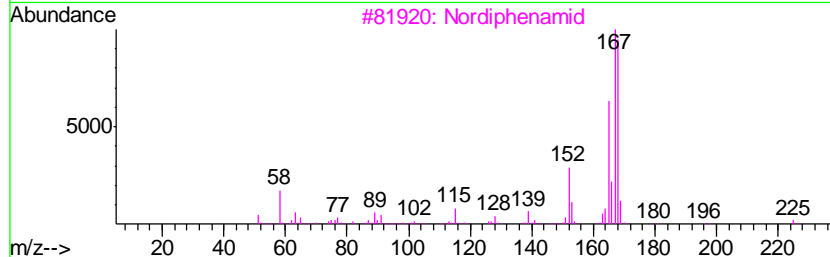
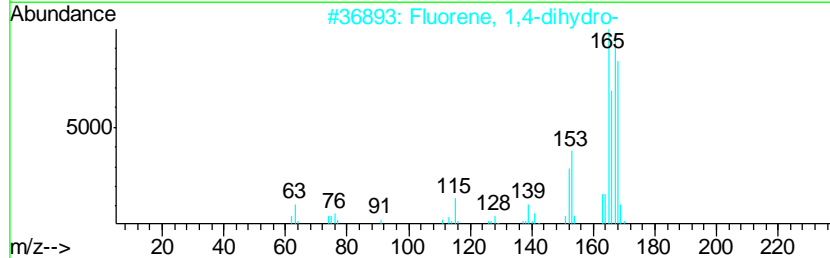
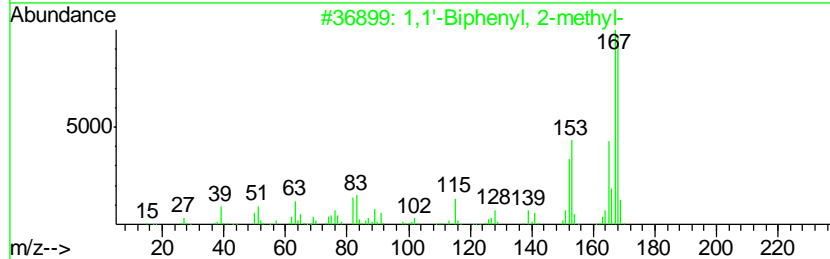
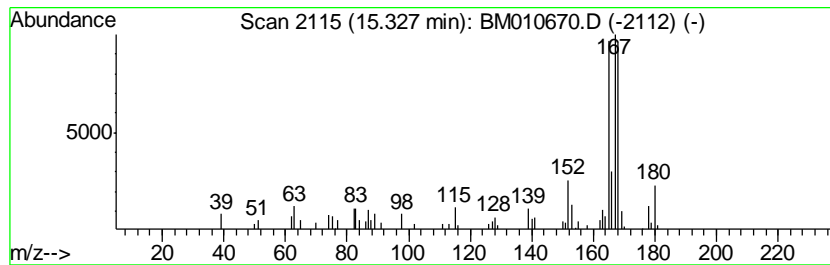
TIC Library : C:\DATABASE\NIST11.L  
 TIC Integration Parameters: LSCINT.P

\*\*\*\*\*  
 Peak Number 9 1,1'-Biphenyl, 2-methyl- Concentration Rank 19

R.T.	EstConc	Area	Relative to ISTD	R.T.
15.33	2.40 ng/ul	131825	Acenaphthene-d10	14.11

Hit#	of	Tentative ID	MW	MolForm	CAS#	Qual
1	5	1,1'-Biphenyl, 2-methyl-	168	C13H12	000643-58-3	89
2		Fluorene, 1,4-dihydro-	168	C13H12	041593-21-9	86
3		Nordiphenamid	225	C15H15NO	000954-21-2	86
4		Diphenylmethane	168	C13H12	000101-81-5	76
5		Fluorene, 2,4a-dihydro-	168	C13H12	059247-36-8	70



Data Path : Z:\HPCHEM1\BNA\_M\DATA\BM062217\  
 Data File : BM010670.D  
 Acq On : 22 Jun 2017 21:21  
 Operator : SJ/JU  
 Sample : I3558-13ME 5X  
 Misc :  
 ALS Vial : 21 Sample Multiplier: 1

Instrument :  
 BNA\_M  
 ClientSampleID :  
 F5C86ME

Quant Method : Z:\HPCHEM1\BNA\_M\METHODS\SOM-EPA-BM062017.M  
 Quant Title : SVOA CALIBRATION

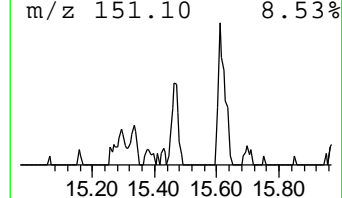
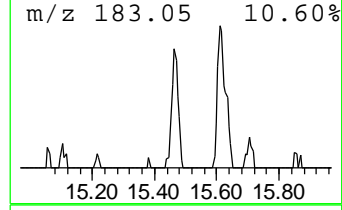
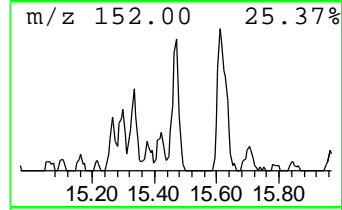
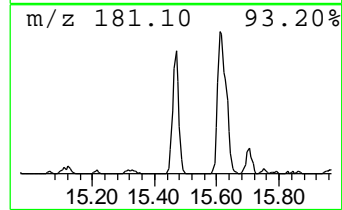
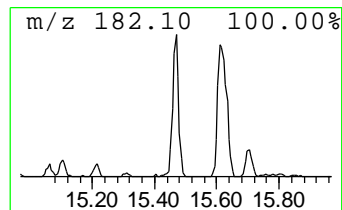
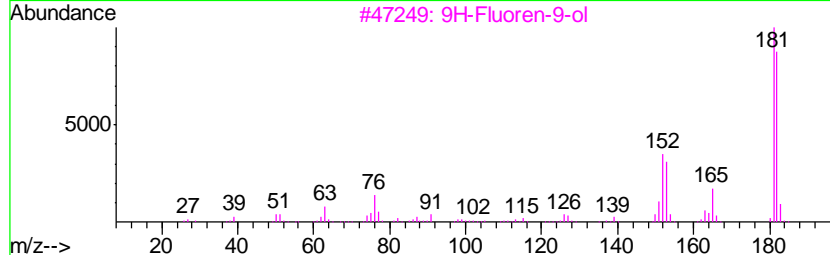
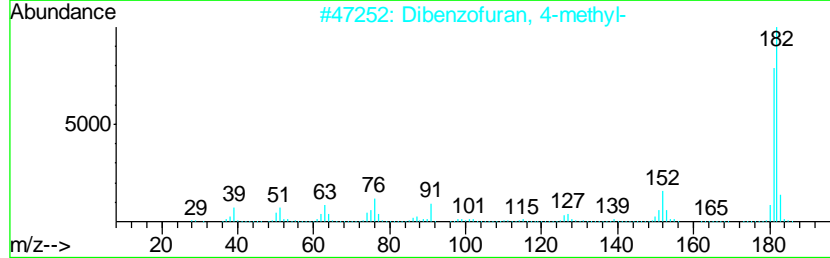
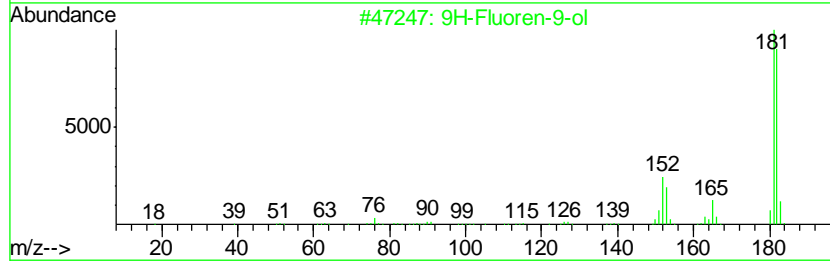
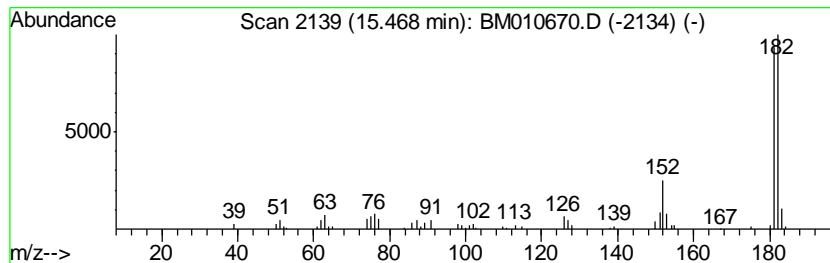
TIC Library : C:\DATABASE\NIST11.L  
 TIC Integration Parameters: LSCINT.P

\*\*\*\*\*  
 Peak Number 10 9H-Fluoren-9-ol Concentration Rank 9

R.T.	EstConc	Area	Relative to ISTD	R.T.
15.47	3.34 ng/ul	183944	Acenaphthene-d10	14.11

Hit#	of	Tentative ID	MW	MolForm	CAS#	Qual
1	5	9H-Fluoren-9-ol	182	C13H10O	001689-64-1	90
2		Dibenzofuran, 4-methyl-	182	C13H10O	007320-53-8	83
3		9H-Fluoren-9-ol	182	C13H10O	001689-64-1	72
4		[1,1'-Biphenyl]-4-carboxaldehyde	182	C13H10O	003218-36-8	64
5		[1,1'-Biphenyl]-4-carboxaldehyde	182	C13H10O	003218-36-8	64



Data Path : Z:\HPCHEM1\BNA\_M\DATA\BM062217\  
 Data File : BM010670.D  
 Acq On : 22 Jun 2017 21:21  
 Operator : SJ/JU  
 Sample : I3558-13ME 5X  
 Misc :  
 ALS Vial : 21 Sample Multiplier: 1

Instrument :  
 BNA\_M  
 ClientSampleID :  
 F5C86ME

Quant Method : Z:\HPCHEM1\BNA\_M\METHODS\SOM-EPA-BM062017.M  
 Quant Title : SVOA CALIBRATION

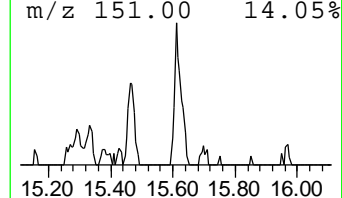
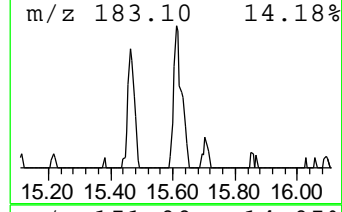
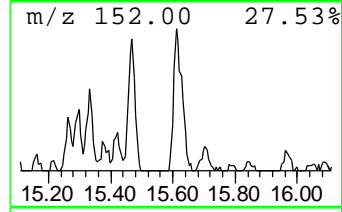
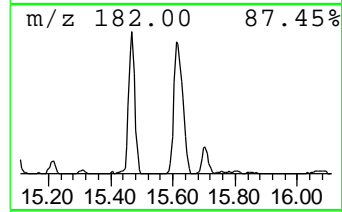
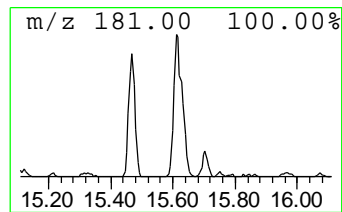
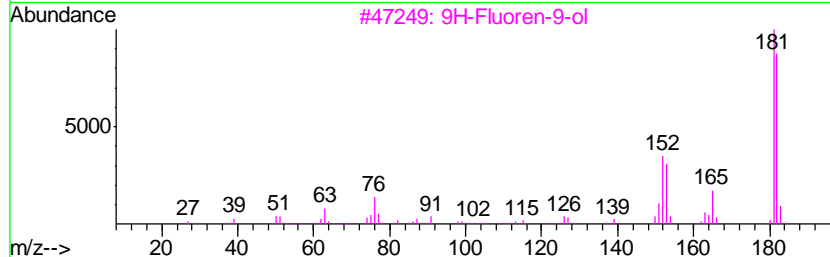
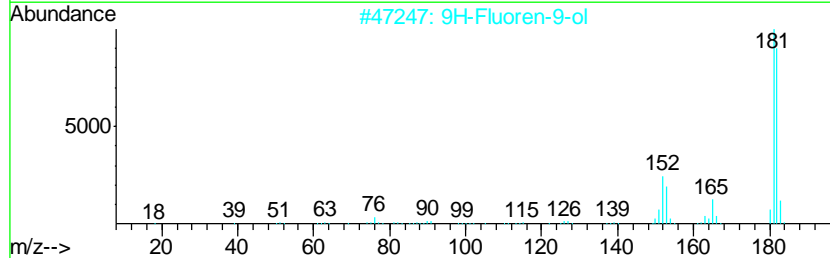
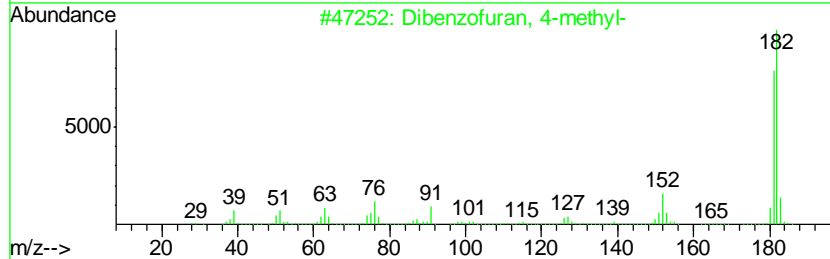
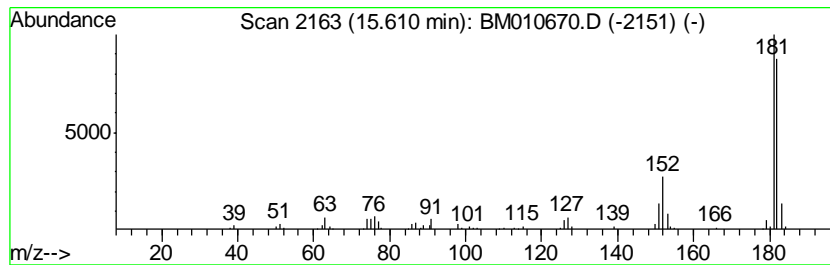
TIC Library : C:\DATABASE\NIST11.L  
 TIC Integration Parameters: LSCINT.P

\*\*\*\*\*  
 Peak Number 11 Dibenzofuran, 4-methyl- Concentration Rank 6

R.T.	EstConc	Area	Relative to ISTD	R.T.
15.61	4.24 ng/ul	282671	Phenanthrene-d10	16.87

Hit#	of	Tentative ID	MW	MolForm	CAS#	Qual
1	5	Dibenzofuran, 4-methyl-	182	C13H10O	007320-53-8	91
2		9H-Fluoren-9-ol	182	C13H10O	001689-64-1	87
3		9H-Fluoren-9-ol	182	C13H10O	001689-64-1	86
4		2,4,6-Cycloheptatrien-1-one, 2-p...	182	C13H10O	014562-09-5	86
5		[1,1'-Biphenyl]-4-carboxaldehyde	182	C13H10O	003218-36-8	78



Data Path : Z:\HPCHEM1\BNA\_M\DATA\BM062217\  
 Data File : BM010670.D  
 Acq On : 22 Jun 2017 21:21  
 Operator : SJ/JU  
 Sample : I3558-13ME 5X  
 Misc :  
 ALS Vial : 21 Sample Multiplier: 1

Instrument :  
 BNA\_M  
 ClientSampled :  
 F5C86ME

Quant Method : Z:\HPCHEM1\BNA\_M\METHODS\SOM-EPA-BM062017.M  
 Quant Title : SVOA CALIBRATION

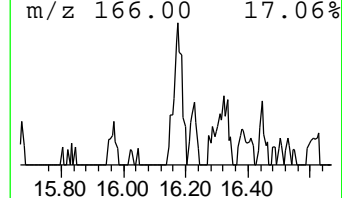
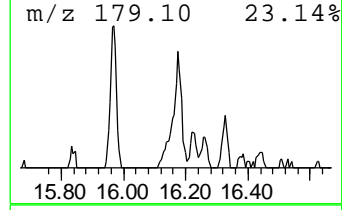
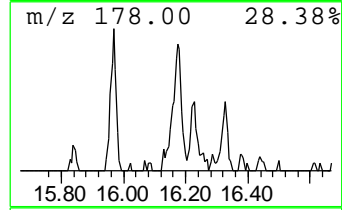
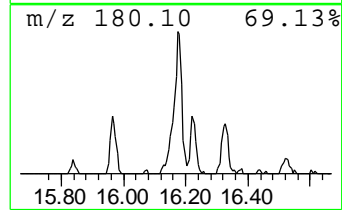
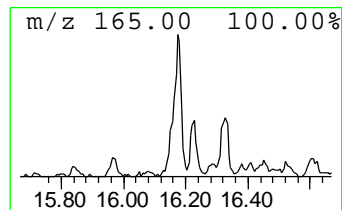
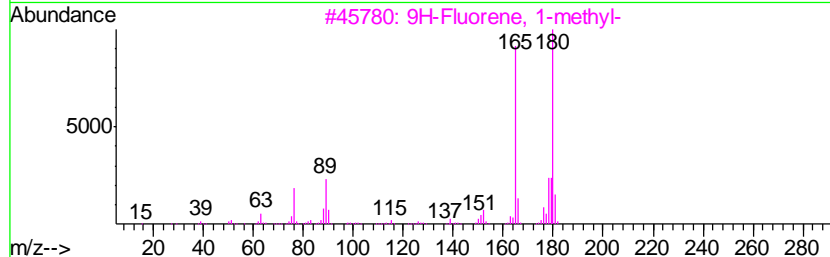
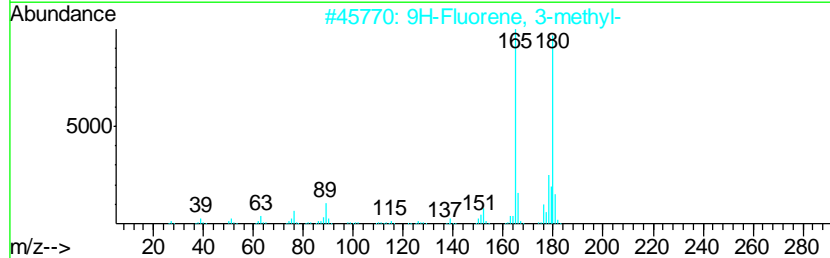
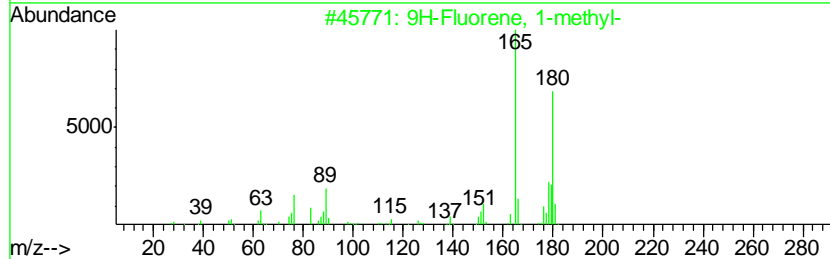
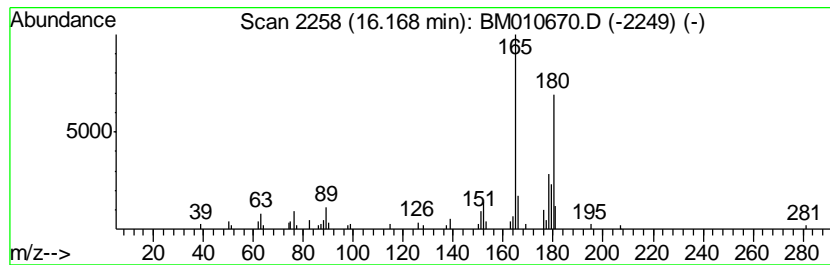
TIC Library : C:\DATABASE\NIST11.L  
 TIC Integration Parameters: LSCINT.P

\*\*\*\*\*  
 Peak Number 12 9H-Fluorene, 1-methyl- Concentration Rank 14

R.T.	EstConc	Area	Relative to ISTD	R.T.
16.17	2.85 ng/ul	190024	Phenanthrene-d10	16.87

Hit#	of	Tentative ID	MW	MolForm	CAS#	Qual
1	5	9H-Fluorene, 1-methyl-	180	C14H12	001730-37-6	96
2		9H-Fluorene, 3-methyl-	180	C14H12	002523-39-9	95
3		9H-Fluorene, 1-methyl-	180	C14H12	001730-37-6	91
4		9H-Fluorene, 2-methyl-	180	C14H12	001430-97-3	91
5		9H-Fluorene, 1-methyl-	180	C14H12	001730-37-6	91





Data Path : Z:\HPCHEM1\BNA\_M\DATA\BM062217\  
 Data File : BM010670.D  
 Acq On : 22 Jun 2017 21:21  
 Operator : SJ/JU  
 Sample : I3558-13ME 5X  
 Misc :  
 ALS Vial : 21 Sample Multiplier: 1

Instrument :  
 BNA\_M  
 ClientSampleID :  
 F5C86ME

Quant Method : Z:\HPCHEM1\BNA\_M\METHODS\SOM-EPA-BM062017.M  
 Quant Title : SVOA CALIBRATION

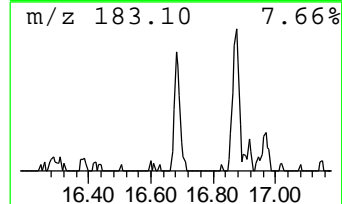
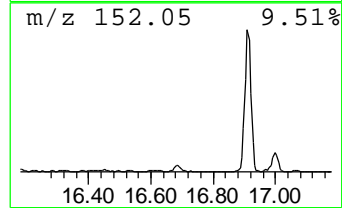
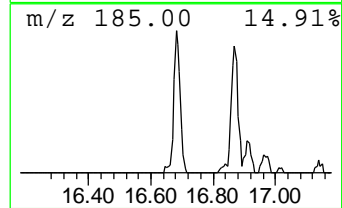
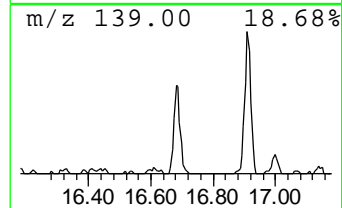
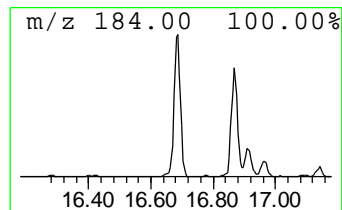
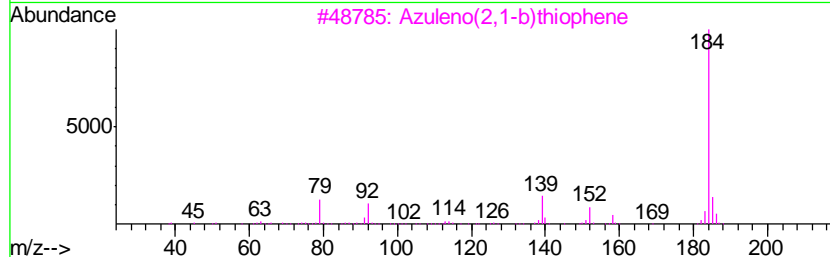
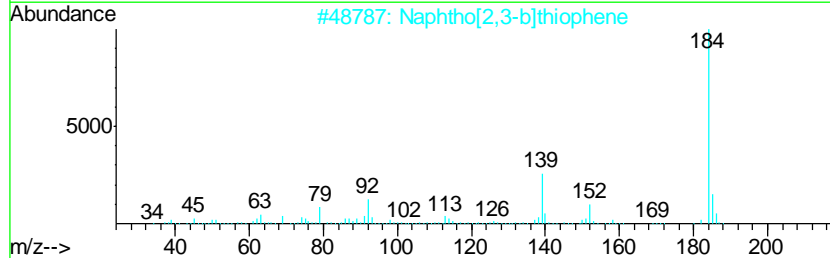
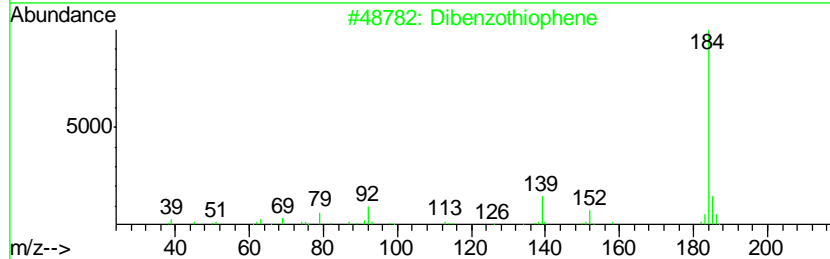
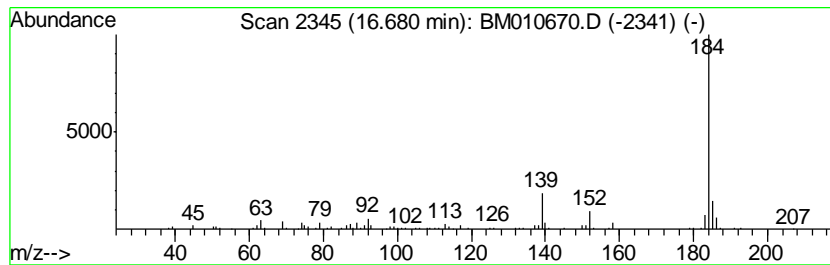
TIC Library : C:\DATABASE\NIST11.L  
 TIC Integration Parameters: LSCINT.P

\*\*\*\*\*  
 Peak Number 13 Dibenzothiophene Concentration Rank 5

R.T.	EstConc	Area	Relative to ISTD	R.T.
16.68	4.31 ng/ul	287438	Phenanthrene-d10	16.87

Hit#	of	Tentative ID	MW	MolForm	CAS#	Qual
1	5	Dibenzothiophene	184	C12H8S	000132-65-0	94
2		Naphtho[2,3-b]thiophene	184	C12H8S	000268-77-9	93
3		Azuleno(2,1-b)thiophene	184	C12H8S	000248-13-5	91
4		Dibenzothiophene	184	C12H8S	000132-65-0	91
5		Dibenzothiophene	184	C12H8S	000132-65-0	90



Data Path : Z:\HPCHEM1\BNA\_M\DATA\BM062217\  
 Data File : BM010670.D  
 Acq On : 22 Jun 2017 21:21  
 Operator : SJ/JU  
 Sample : I3558-13ME 5X  
 Misc :  
 ALS Vial : 21 Sample Multiplier: 1

Instrument :  
 BNA\_M  
 ClientSampleID :  
 F5C86ME

Quant Method : Z:\HPCHEM1\BNA\_M\METHODS\SOM-EPA-BM062017.M  
 Quant Title : SVOA CALIBRATION

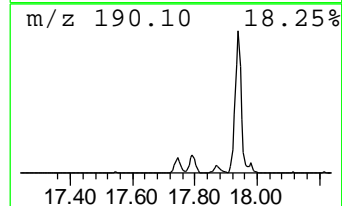
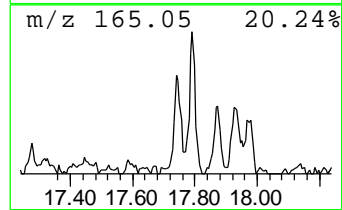
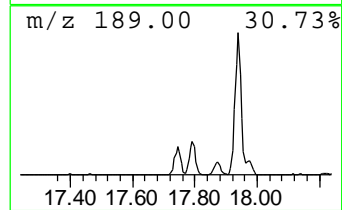
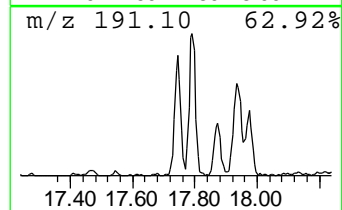
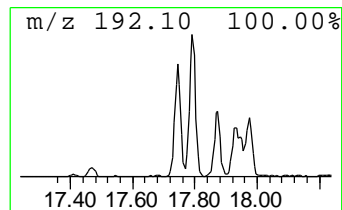
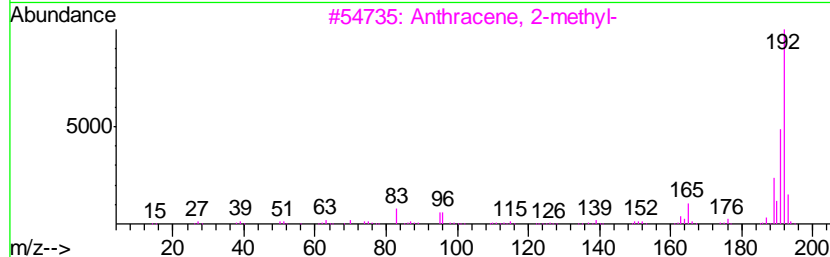
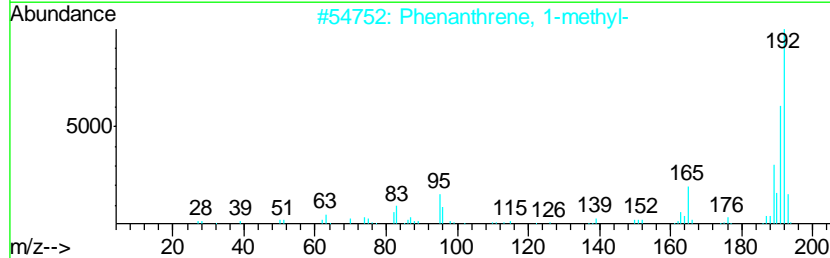
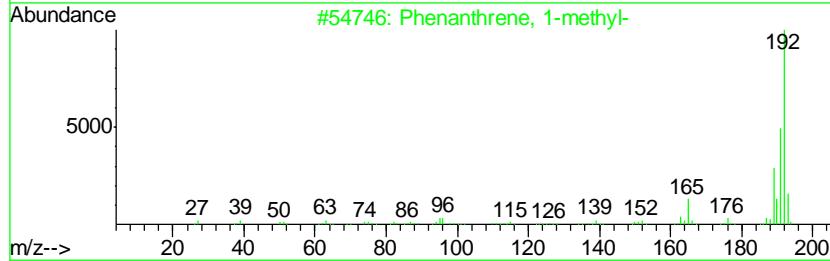
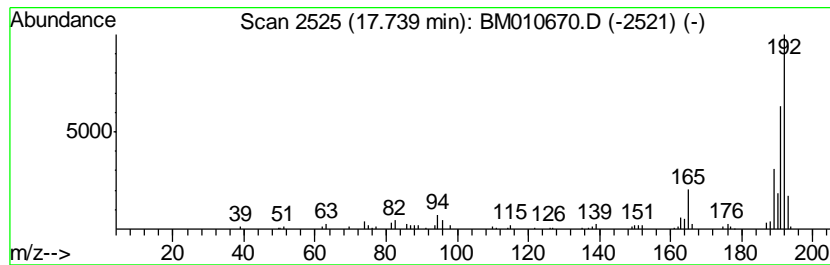
TIC Library : C:\DATABASE\NIST11.L  
 TIC Integration Parameters: LSCINT.P

\*\*\*\*\*  
 Peak Number 14 Phenanthrene, 1-methyl- Concentration Rank 8

R.T.	EstConc	Area	Relative to ISTD	R.T.
17.74	3.61 ng/ul	240315	Phenanthrene-d10	16.87

Hit#	of	Tentative ID	MW	MolForm	CAS#	Qual
1	5	Phenanthrene, 1-methyl-	192	C15H12	000832-69-9	96
2		Phenanthrene, 1-methyl-	192	C15H12	000832-69-9	96
3		Anthracene, 2-methyl-	192	C15H12	000613-12-7	95
4		Phenanthrene, 2-methyl-	192	C15H12	002531-84-2	95
5		1H-Indene, 2-phenyl-	192	C15H12	004505-48-0	94



Data Path : Z:\HPCHEM1\BNA\_M\DATA\BM062217\  
 Data File : BM010670.D  
 Acq On : 22 Jun 2017 21:21  
 Operator : SJ/JU  
 Sample : I3558-13ME 5X  
 Misc :  
 ALS Vial : 21 Sample Multiplier: 1

Instrument :  
 BNA\_M  
 ClientSampled :  
 F5C86ME

Quant Method : Z:\HPCHEM1\BNA\_M\METHODS\SOM-EPA-BM062017.M  
 Quant Title : SVOA CALIBRATION

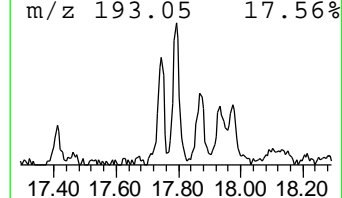
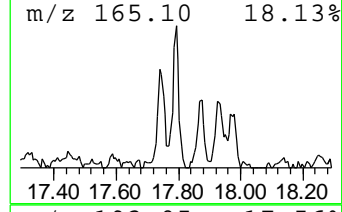
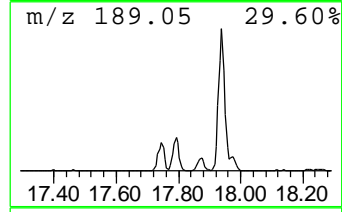
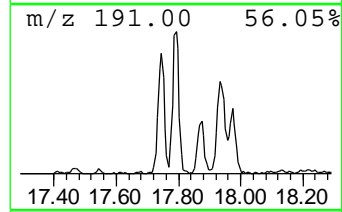
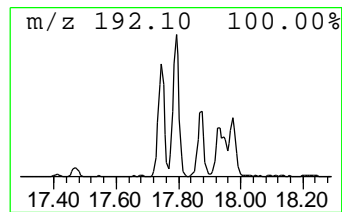
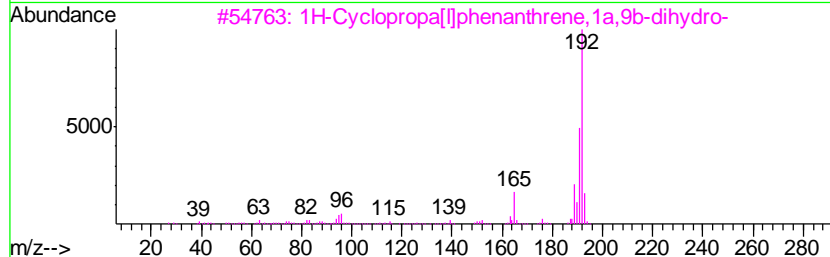
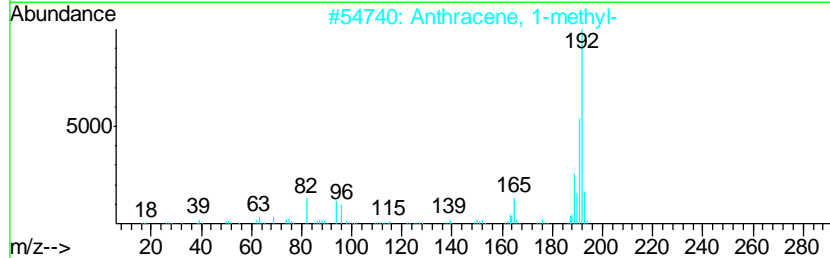
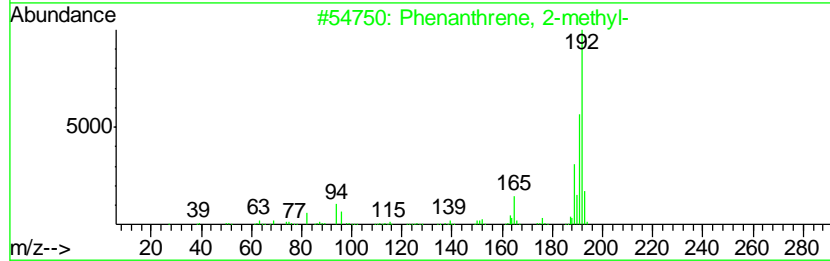
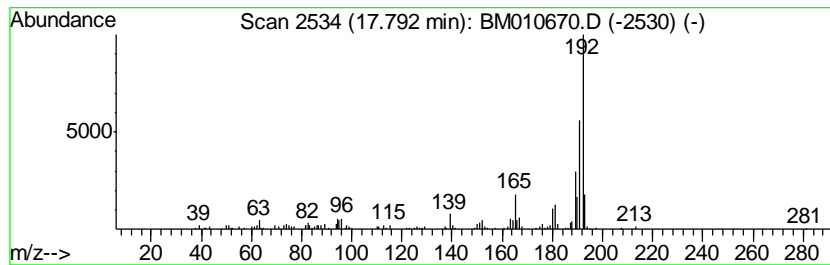
TIC Library : C:\DATABASE\NIST11.L  
 TIC Integration Parameters: LSCINT.P

\*\*\*\*\*  
 Peak Number 15 Phenanthrene, 2-methyl- Concentration Rank 3

R.T.	EstConc	Area	Relative to ISTD	R.T.
17.79	6.06 ng/ul	403771	Phenanthrene-d10	16.87

Hit#	of	Tentative ID	MW	MolForm	CAS#	Qual
1	5	Phenanthrene, 2-methyl-	192	C15H12	002531-84-2	95
2		Anthracene, 1-methyl-	192	C15H12	000610-48-0	94
3		1H-Cyclopropa[1]phenanthrene,1a,...	192	C15H12	000949-41-7	93
4		Naphtho[2,3-b]norborene	192	C15H12	107426-38-0	93
5		Phenanthrene, 1-methyl-	192	C15H12	000832-69-9	93



Data Path : Z:\HPCHEM1\BNA\_M\DATA\BM062217\  
 Data File : BM010670.D  
 Acq On : 22 Jun 2017 21:21  
 Operator : SJ/JU  
 Sample : I3558-13ME 5X  
 Misc :  
 ALS Vial : 21 Sample Multiplier: 1

Instrument :  
 BNA\_M  
 ClientSampleId :  
 F5C86ME

Quant Method : Z:\HPCHEM1\BNA\_M\METHODS\SOM-EPA-BM062017.M  
 Quant Title : SVOA CALIBRATION

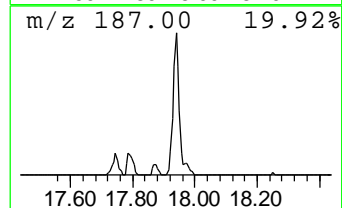
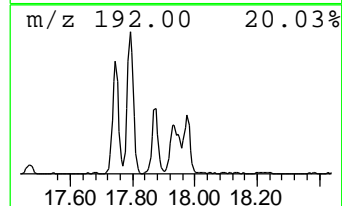
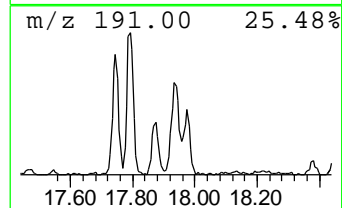
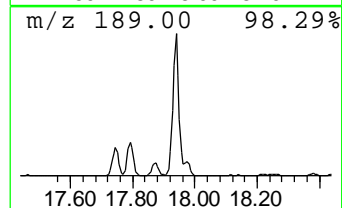
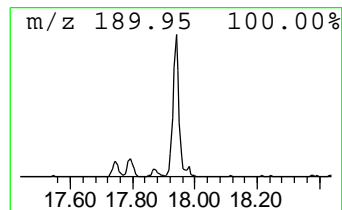
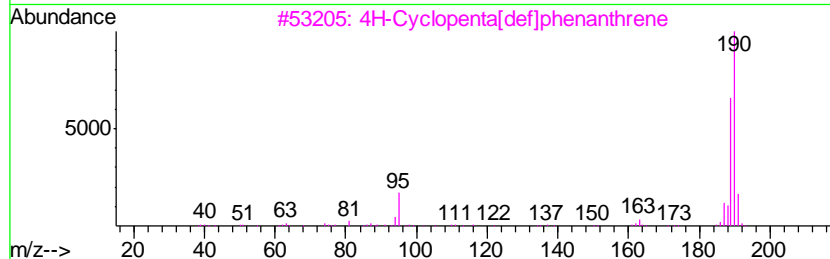
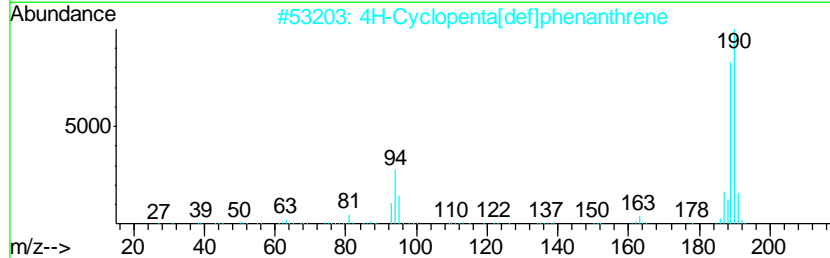
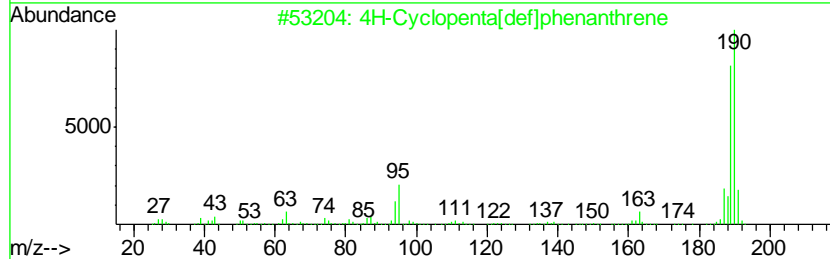
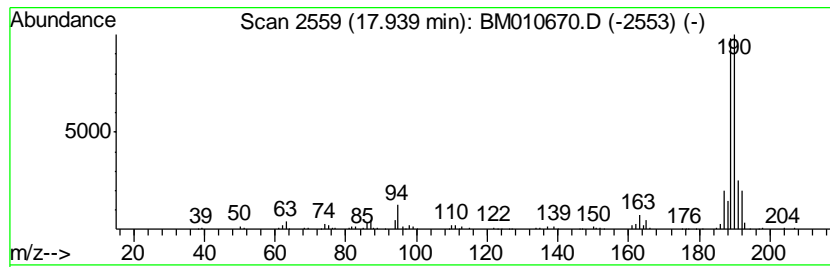
TIC Library : C:\DATABASE\NIST11.L  
 TIC Integration Parameters: LSCINT.P

\*\*\*\*\*  
 Peak Number 17 4H-Cyclopenta[def]phenanthrene Concentration Rank 2

R.T.	EstConc	Area	Relative to ISTD	R.T.
17.94	8.10 ng/ul	540014	Phenanthrene-d10	16.87

Hit#	of	Tentative ID	MW	MolForm	CAS#	Qual
1	5	4H-Cyclopenta[def]phenanthrene	190	C15H10	000203-64-5	93
2		4H-Cyclopenta[def]phenanthrene	190	C15H10	000203-64-5	74
3		4H-Cyclopenta[def]phenanthrene	190	C15H10	000203-64-5	43
4		2,2'-Bis(4,5-dimethylimidazole)	190	C10H14N4	069286-06-2	42
5		2,2'-Bis(4,5-dimethylimidazole)	190	C10H14N4	069286-06-2	40



Data Path : Z:\HPCHEM1\BNA\_M\DATA\BM062217\  
 Data File : BM010670.D  
 Acq On : 22 Jun 2017 21:21  
 Operator : SJ/JU  
 Sample : I3558-13ME 5X  
 Misc :  
 ALS Vial : 21 Sample Multiplier: 1

Instrument :  
 BNA\_M  
 ClientSampleID :  
 F5C86ME

Quant Method : Z:\HPCHEM1\BNA\_M\METHODS\SOM-EPA-BM062017.M  
 Quant Title : SVOA CALIBRATION

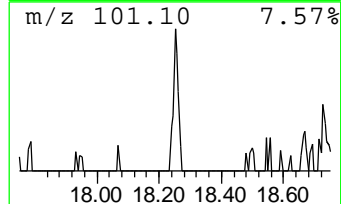
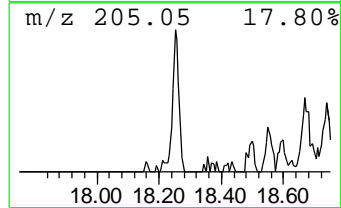
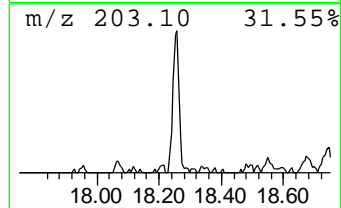
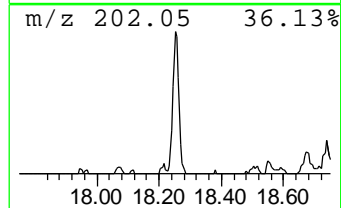
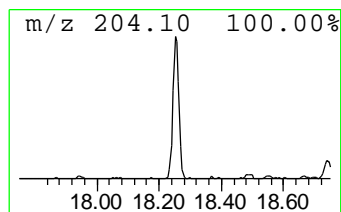
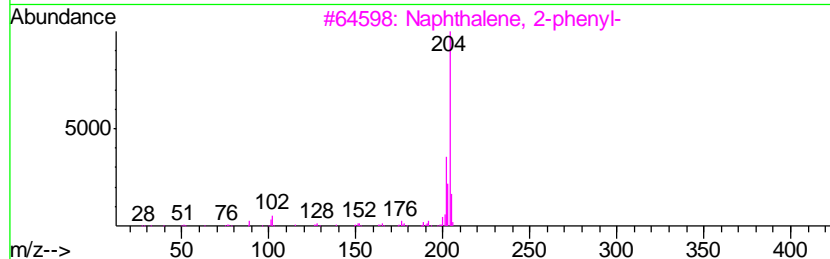
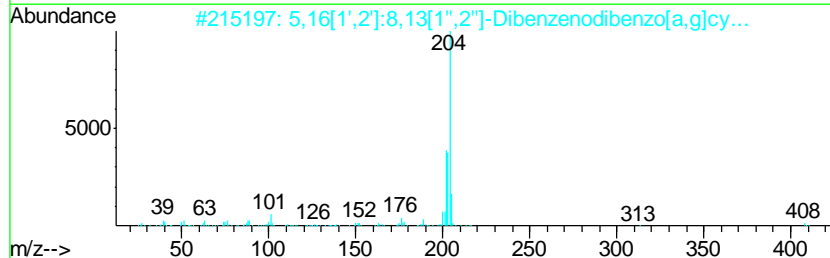
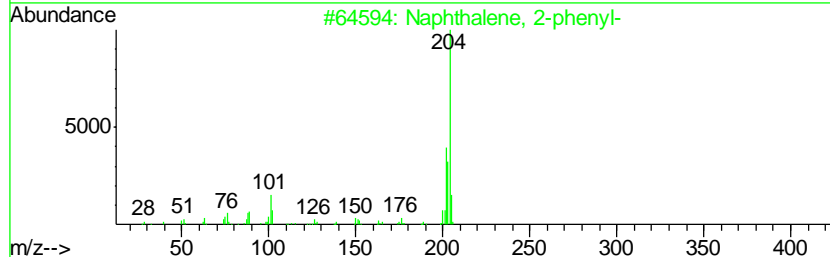
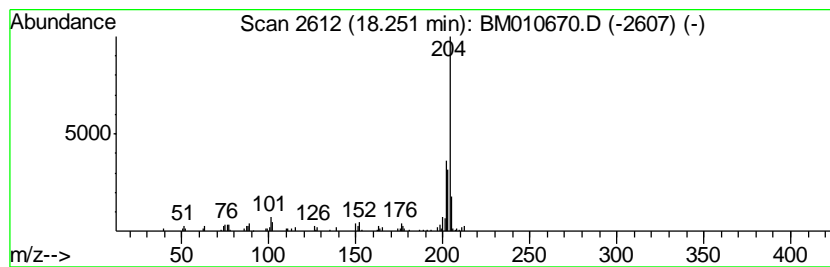
TIC Library : C:\DATABASE\NIST11.L  
 TIC Integration Parameters: LSCINT.P

\*\*\*\*\*  
 Peak Number 18 Naphthalene, 2-phenyl- Concentration Rank 15

R.T.	EstConc	Area	Relative to ISTD	R.T.
18.25	2.65 ng/ul	176719	Phenanthrene-d10	16.87

Hit#	of	Tentative ID	MW	MolForm	CAS#	Qual
1	5	Naphthalene, 2-phenyl-	204	C16H12	000612-94-2	89
2		5,16[1',2']:8,13[1'',2'']-Dibenz...	408	C32H24	005672-97-9	86
3		Naphthalene, 2-phenyl-	204	C16H12	000612-94-2	81
4		Naphthalene, 2-phenyl-	204	C16H12	000612-94-2	76
5		Tricyclo[8.2.2.2(4,7)]hexadeca-2...	204	C16H12	006572-60-7	68



Data Path : Z:\HPCHEM1\BNA\_M\DATA\BM062217\  
 Data File : BM010670.D  
 Acq On : 22 Jun 2017 21:21  
 Operator : SJ/JU  
 Sample : I3558-13ME 5X  
 Misc :  
 ALS Vial : 21 Sample Multiplier: 1

Instrument :  
 BNA\_M  
 ClientSampleID :  
 F5C86ME

Quant Method : Z:\HPCHEM1\BNA\_M\METHODS\SOM-EPA-BM062017.M  
 Quant Title : SVOA CALIBRATION

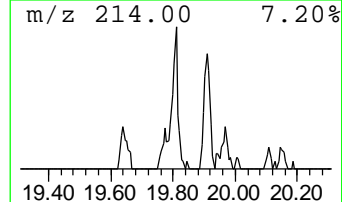
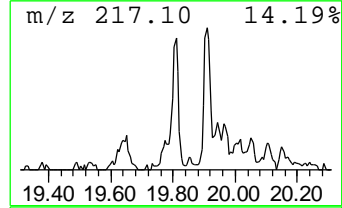
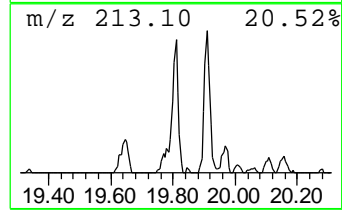
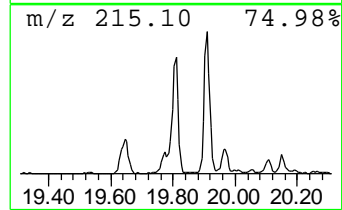
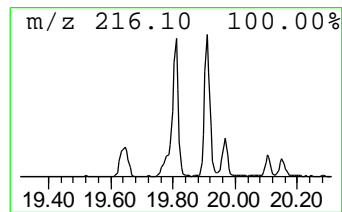
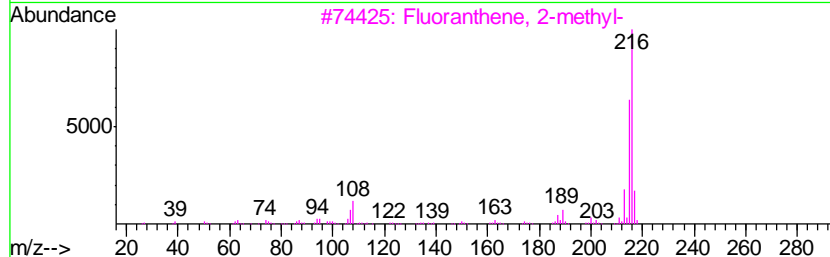
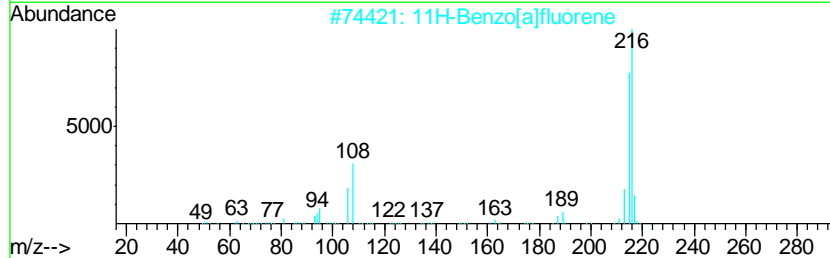
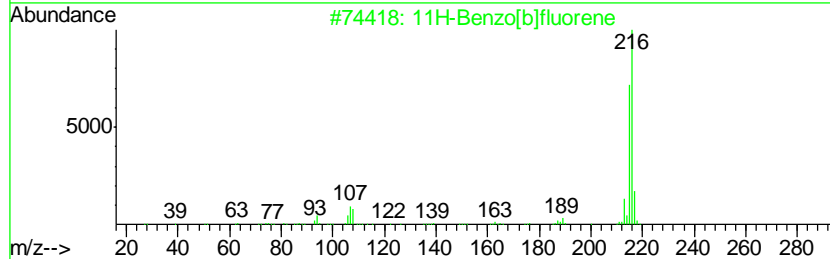
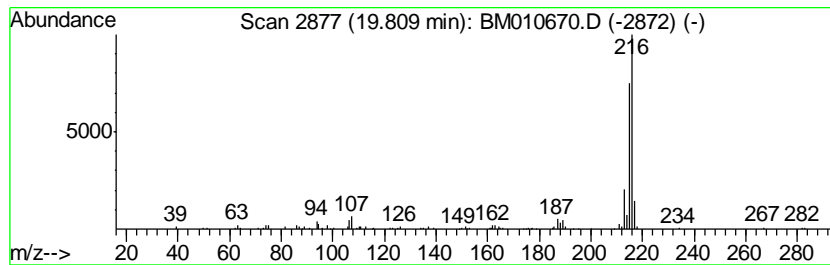
TIC Library : C:\DATABASE\NIST11.L  
 TIC Integration Parameters: LSCINT.P

\*\*\*\*\*  
 Peak Number 19 11H-Benzo[b]fluorene Concentration Rank 11

R.T.	EstConc	Area	Relative to ISTD	R.T.
19.81	2.89 ng/ul	333475	Chrysene-d12	21.08

Hit#	of	Tentative ID	MW	MolForm	CAS#	Qual
1	5	11H-Benzo[b]fluorene	216	C17H12	000243-17-4	91
2		11H-Benzo[a]fluorene	216	C17H12	000238-84-6	91
3		Fluoranthene, 2-methyl-	216	C17H12	033543-31-6	87
4		Pyrene, 1-methyl-	216	C17H12	002381-21-7	86
5		Fluoranthene, 2-methyl-	216	C17H12	033543-31-6	80



Data Path : Z:\HPCHEM1\BNA\_M\DATA\BM062217\  
 Data File : BM010670.D  
 Acq On : 22 Jun 2017 21:21  
 Operator : SJ/JU  
 Sample : I3558-13ME 5X  
 Misc :  
 ALS Vial : 21 Sample Multiplier: 1

Instrument :  
 BNA\_M  
 ClientSampleID :  
 F5C86ME

Quant Method : Z:\HPCHEM1\BNA\_M\METHODS\SOM-EPA-BM062017.M  
 Quant Title : SVOA CALIBRATION

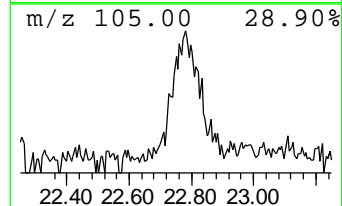
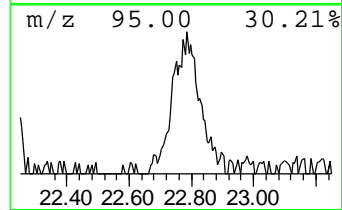
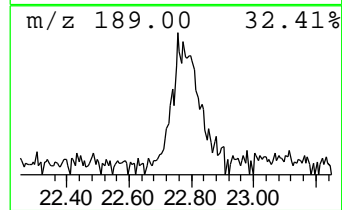
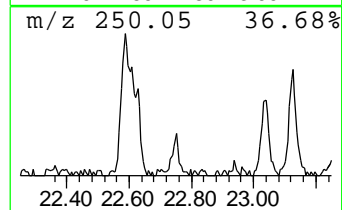
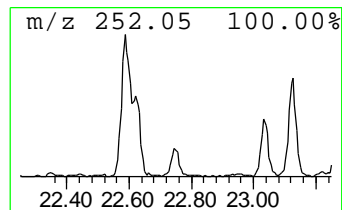
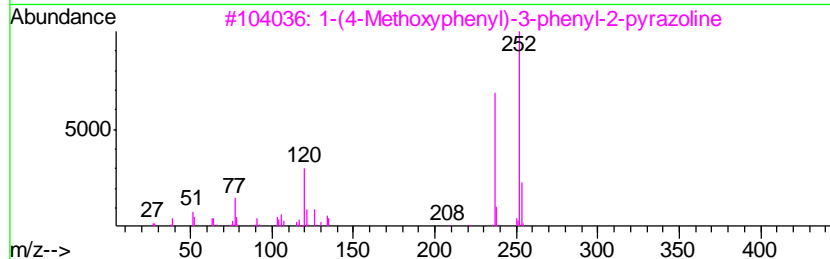
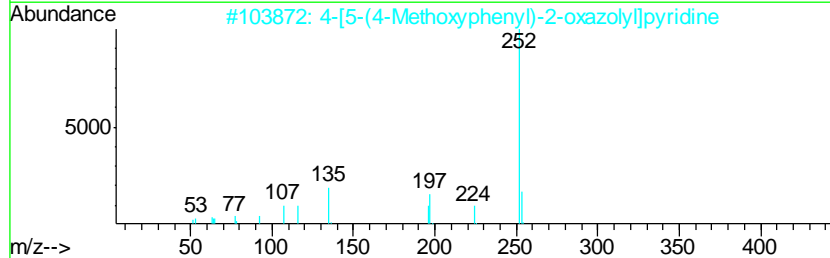
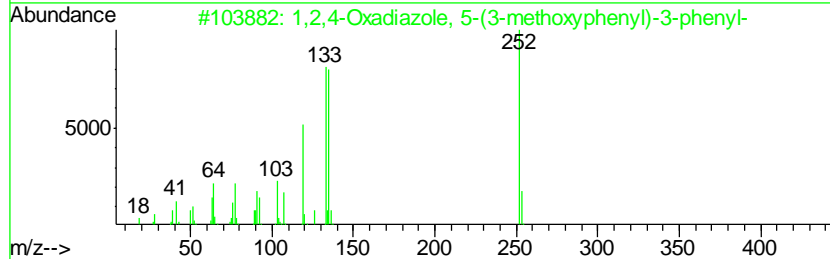
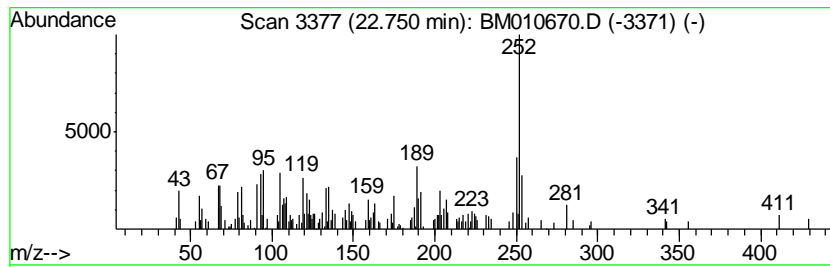
TIC Library : C:\DATABASE\NIST11.L  
 TIC Integration Parameters: LSCINT.P

\*\*\*\*\*  
 Peak Number 21 unknown-01 Concentration Rank 16

R.T.	EstConc	Area	Relative to ISTD	R.T.
22.75	2.61 ng/ul	157564	Perylene-d12	23.22

Hit#	of	Tentative ID	MW	MolForm	CAS#	Qual
1	5	1,2,4-Oxadiazole, 5-(3-methoxyph...	252	C15H12N2O2	054494-11-0	47
2		4-[5-(4-Methoxyphenyl)-2-oxazoly...	252	C15H12N2O2	096753-33-2	43
3		1-(4-Methoxyphenyl)-3-phenyl-2-p...	252	C16H16N2O	002535-59-3	43
4		p-(Adamantyl-1)phenylcyclopropane	252	C19H24	1000140-46-1	43
5		Benzo[a]pyrene	252	C20H12	000050-32-8	38



Data Path : Z:\HPCHEM1\BNA\_M\DATA\BM062217\  
 Data File : BM010670.D  
 Acq On : 22 Jun 2017 21:21  
 Operator : SJ/JU  
 Sample : I3558-13ME 5X  
 Misc :  
 ALS Vial : 21 Sample Multiplier: 1

Instrument :  
 BNA\_M  
 ClientSampleId :  
 F5C86ME

Quant Method : Z:\HPCHEM1\BNA\_M\METHODS\SOM-EPA-BM062017.M  
 Quant Title : SVOA CALIBRATION

TIC Library : C:\DATABASE\NIST11.L  
 TIC Integration Parameters: LSCINT.P

TIC Top Hit name	RT	EstConc	Units	Response	--Internal Standard--			
					#	RT	Resp	Conc
Indane	7.83	2.4	ng/ul	49045	1	7.46	414782	20.0
Benzene, 1-propynyl-	7.99	4.1	ng/ul	84712	1	7.46	414782	20.0
Naphthalene, 1-me...	12.12	20.3	ng/ul	658734	2	10.23	648419	20.0
Naphthalene, 2,3-...	13.13	2.0	ng/ul	112211	3	14.11	1100010	20.0
Naphthalene, 2,7-...	13.26	2.9	ng/ul	157199	3	14.11	1100010	20.0
Sulfone, methyl 4...	13.29	2.4	ng/ul	134354	3	14.11	1100010	20.0
Naphthalene, 1,6-...	13.43	5.2	ng/ul	285934	3	14.11	1100010	20.0
Naphthalene, 2,6-...	13.48	2.9	ng/ul	157632	3	14.11	1100010	20.0
1,1'-Biphenyl, 2-...	15.33	2.4	ng/ul	131825	3	14.11	1100010	20.0
9H-Fluoren-9-ol	15.47	3.3	ng/ul	183944	3	14.11	1100010	20.0
Dibenzofuran, 4-m...	15.61	4.2	ng/ul	282671	4	16.87	1332880	20.0
9H-Fluorene, 1-me...	16.17	2.9	ng/ul	190024	4	16.87	1332880	20.0
Dibenzothiophene	16.68	4.3	ng/ul	287438	4	16.87	1332880	20.0
Phenanthrene, 1-m...	17.74	3.6	ng/ul	240315	4	16.87	1332880	20.0
Phenanthrene, 2-m...	17.79	6.1	ng/ul	403771	4	16.87	1332880	20.0
4H-Cyclopenta[def...	17.94	8.1	ng/ul	540014	4	16.87	1332880	20.0
Naphthalene, 2-ph...	18.25	2.6	ng/ul	176719	4	16.87	1332880	20.0
11H-Benzo[b]fluorene	19.81	2.9	ng/ul	333475	5	21.08	2310930	20.0
unknown-01	22.75	2.6	ng/ul	157564	6	23.22	1206760	20.0