

Data Path : Z:\svoasrv\HPCHEM1\BNA_M\Data\BM062224\
 Data File : BM046197.D
 Acq On : 22 Jun 2024 14:38
 Operator : MA/JU
 Sample : P2775-22
 Misc :
 ALS Vial : 10 Sample Multiplier: 1

Instrument :
 BNA_M
 ClientSampleId :
 A4D59

Manual Integrations
 APPROVED

Reviewed By :Yogesh Patel 06/24/2024
 Supervised By :Jagrut Upadhyay 06/24/2024

Quant Time: Jun 22 15:22:58 2024
 Quant Method : Z:\svoasrv\HPCHEM1\BNA_M\Methods\SFAM-EPA-SIM-BM061824.M
 Quant Title : ASP BNA STANDARDS FOR 5 POINT CALIBRATION
 QLast Update : Sat Jun 22 02:10:56 2024
 Response via : Initial Calibration

Compound	R.T.	QIon	Response	Conc	Units	Dev(Min)	
Internal Standards							
1) 1,4-Dichlorobenzene-d4	7.413	152	2198	0.400	ng/ul	-0.05	
4) Naphthalene-d8	10.182	136	6686	0.400	ng/ul	-0.07	
9) Acenaphthene-d10	14.061	164	3816	0.400	ng/ul	-0.05	
13) Phenanthrene-d10	16.802	188	8641m	0.400	ng/ul	-0.06	
17) Chrysene-d12	21.003	240	6231m	0.400	ng/ul	-0.04	
23) Perylene-d12	23.098	264	7675	0.400	ng/ul	-0.04	
System Monitoring Compounds							
3) 1,4-Dioxane-d8	3.025	96	12465	4.133	ng/ul	-0.02	
6) 2-Methylnaphthalene-d10	11.804	152	2792	0.311	ng/ul	-0.06	
18) Fluoranthene-d10	18.838	212	6433	0.345	ng/ul	-0.05	
Target Compounds							
							Qvalue
5) Naphthalene	10.231	128	12764	0.685	ng/ul		95
7) 2-Methylnaphthalene	11.876	142	4462	0.425	ng/ul		96
8) 1-Methylnaphthalene	12.090	142	3600	0.313	ng/ul		99
10) Acenaphthylene	13.775	152	62085	3.430	ng/ul		96
11) Acenaphthene	14.121	153	13326m	1.020	ng/ul		
12) Fluorene	15.116	166	19005	1.355	ng/ul		99
15) Phenanthrene	16.840	178	303469m	12.500	ng/ul		
16) Anthracene	16.933	178	84265m	4.661	ng/ul		
19) Fluoranthene	18.866	202	644268	23.880	ng/ul		96
20) Pyrene	19.229	202	481278	16.495	ng/ul		97
21) Benzo(a)anthracene	20.986	228	335679	13.947	ng/ul		100
22) Chrysene	21.038	228	300404	9.780	ng/ul		99
24) Benzo(b)fluoranthene	22.481	252	438065m	15.842	ng/ul		
25) Benzo(k)fluoranthene	22.517	252	163569m	4.976	ng/ul		
26) Benzo(a)pyrene	23.005	252	202327m	7.896	ng/ul		
27) Indeno(1,2,3-cd)pyrene	25.139	276	166812	3.978	ng/ul#		91
28) Dibenzo(a,h)anthracene	25.142	278	50579	1.620	ng/ul		95
29) Benzo(g,h,i)perylene	25.759	276	25158	0.700	ng/ul		95

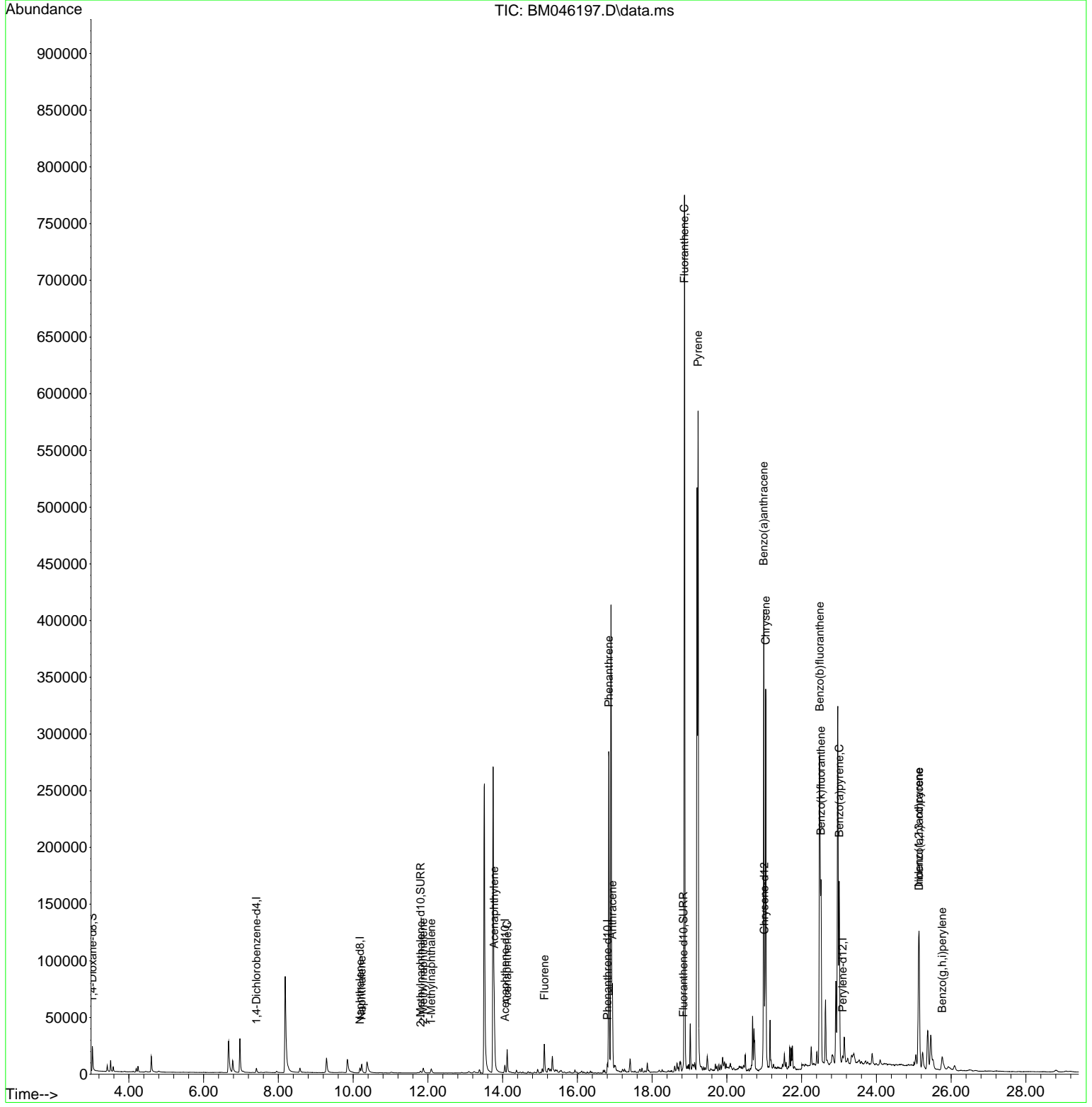
(#) = qualifier out of range (m) = manual integration (+) = signals summed

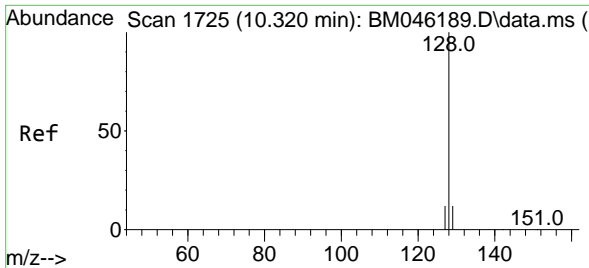
Data Path : Z:\svoasrv\HPCHEM1\BNA_M\Data\BM062224\
 Data File : BM046197.D
 Acq On : 22 Jun 2024 14:38
 Operator : MA/JU
 Sample : P2775-22
 Misc :
 ALS Vial : 10 Sample Multiplier: 1

Instrument :
 BNA_M
 ClientSampleId :
 A4D59

Quant Time: Jun 22 15:22:58 2024
 Quant Method : Z:\svoasrv\HPCHEM1\BNA_M\Methods\SFAM-EPA-SIM-BM061824.M
 Quant Title : ASP BNA STANDARDS FOR 5 POINT CALIBRATION
 QLast Update : Sat Jun 22 02:10:56 2024
 Response via : Initial Calibration

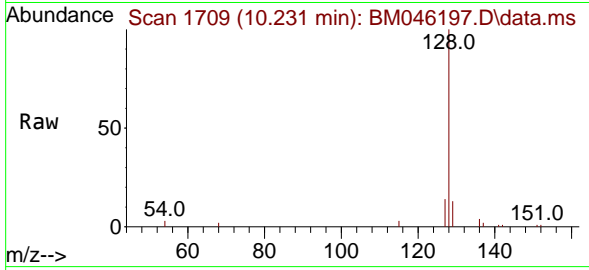
Manual Integrations
APPROVED
 Reviewed By :Yogesh Patel 06/24/2024
 Supervised By :Jagrut Upadhyay 06/24/2024





#5
Naphthalene
 Concen: 0.685 ng/u1
 RT: 10.231 min Scan# 11
 Delta R.T. -0.071 min
 Lab File: BM046197.D
 Acq: 22 Jun 2024 14:38

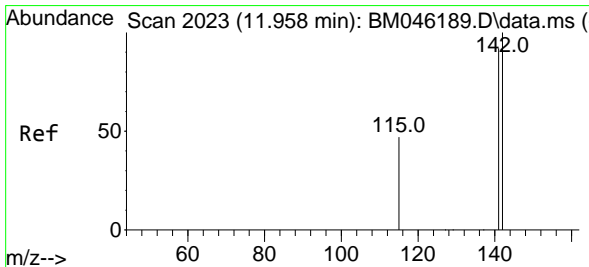
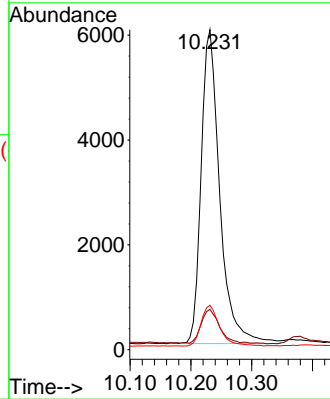
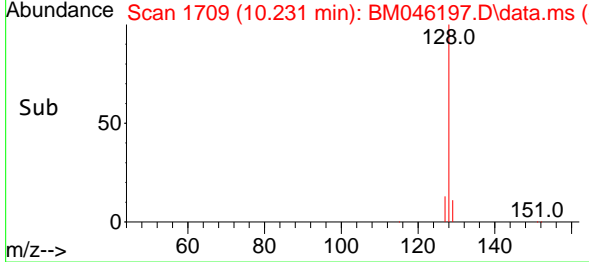
Instrument :
 BNA_M
ClientSampleId :
 A4D59



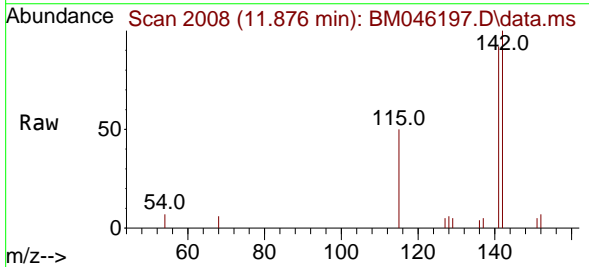
Tgt Ion:128 Resp: 1276
 Ion Ratio Lower Upper
 128 100
 129 12.6 11.8 17.6
 127 13.9 12.8 19.2

Manual Integrations
APPROVED

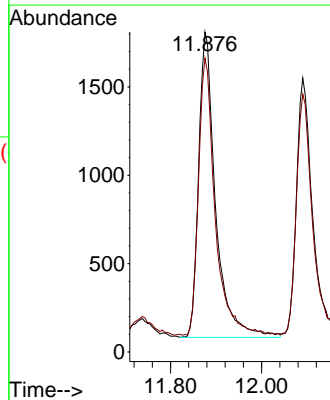
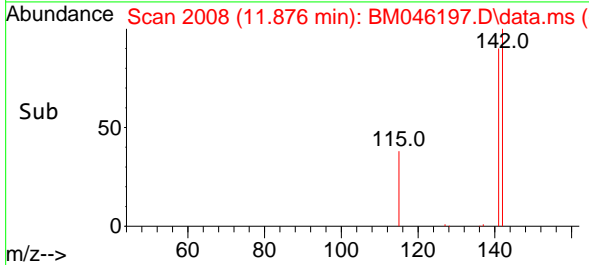
Reviewed By :Yogesh Patel 06/24/2024
 Supervised By :Jagrut Upadhyay 06/24/2024

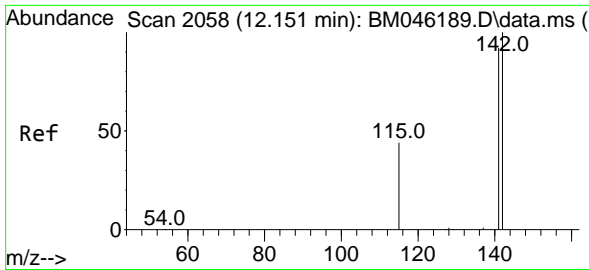


#7
2-Methylnaphthalene
 Concen: 0.425 ng/u1
 RT: 11.876 min Scan# 2008
 Delta R.T. -0.071 min
 Lab File: BM046197.D
 Acq: 22 Jun 2024 14:38



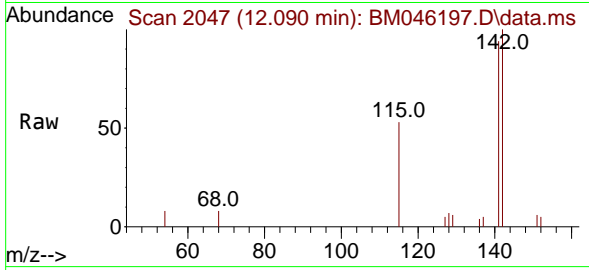
Tgt Ion:142 Resp: 4462
 Ion Ratio Lower Upper
 142 100
 141 89.1 74.6 111.8





#8
 1-Methylnaphthalene
 Concen: 0.313 ng/u1
 RT: 12.090 min Scan# 2058
 Delta R.T. -0.060 min
 Lab File: BM046197.D
 Acq: 22 Jun 2024 14:38

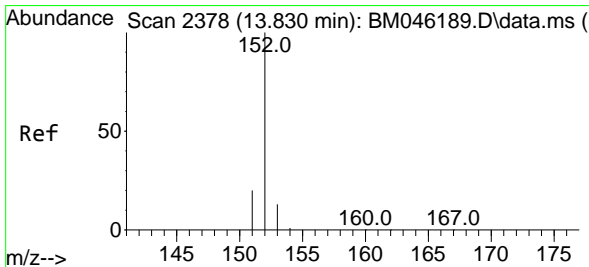
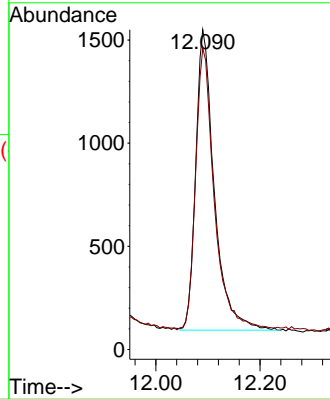
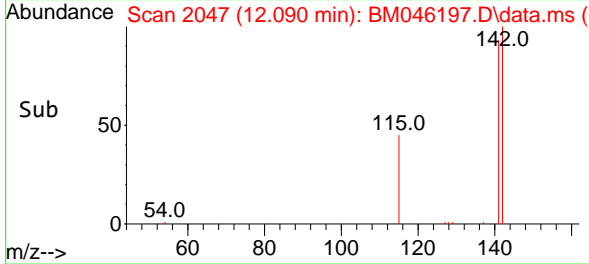
Instrument :
 BNA_M
 ClientSampleId :
 A4D59



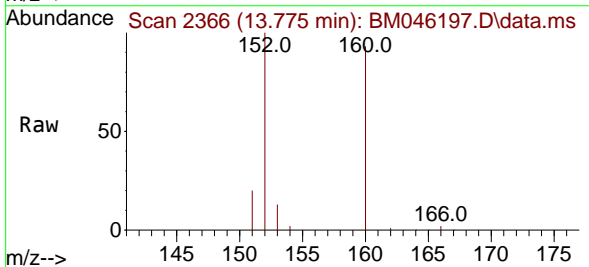
Tgt Ion:142 Resp: 3600
 Ion Ratio Lower Upper
 142 100
 141 95.1 75.2 112.8

Manual Integrations
 APPROVED

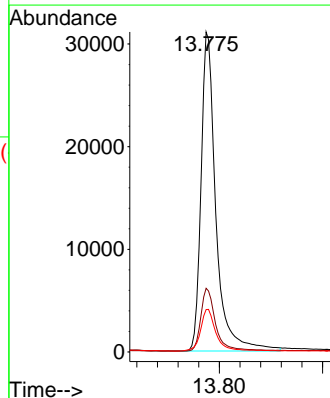
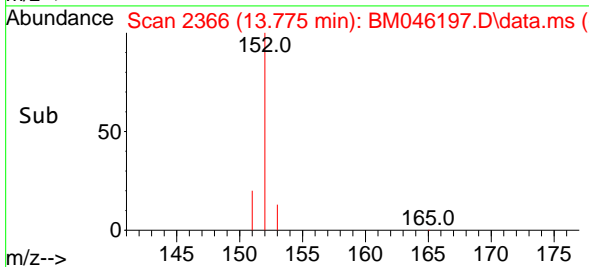
Reviewed By :Yogesh Patel 06/24/2024
 Supervised By :Jagrut Upadhyay 06/24/2024

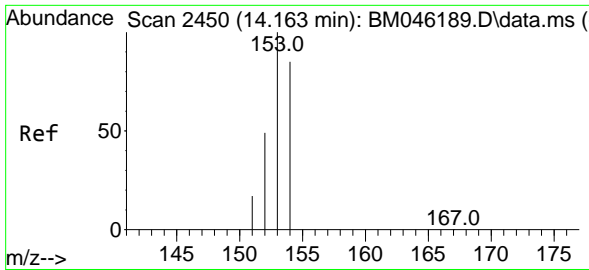


#10
 Acenaphthylene
 Concen: 3.430 ng/u1
 RT: 13.775 min Scan# 2366
 Delta R.T. -0.060 min
 Lab File: BM046197.D
 Acq: 22 Jun 2024 14:38



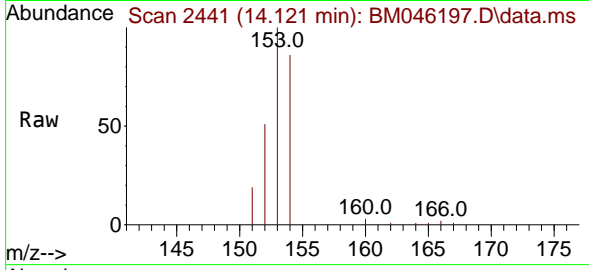
Tgt Ion:152 Resp: 62085
 Ion Ratio Lower Upper
 152 100
 151 19.9 17.4 26.2
 153 13.3 11.8 17.8





#11
 Acenaphthene
 Concen: 1.020 ng/u1 m
 RT: 14.121 min Scan# 2441
 Delta R.T. -0.051 min
 Lab File: BM046197.D
 Acq: 22 Jun 2024 14:38

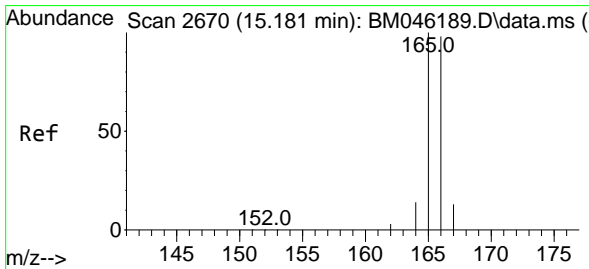
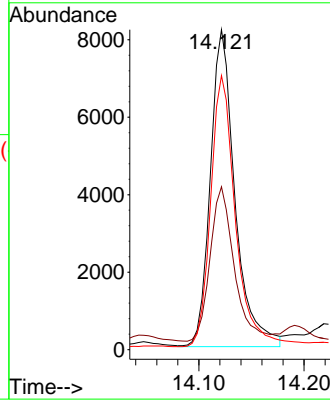
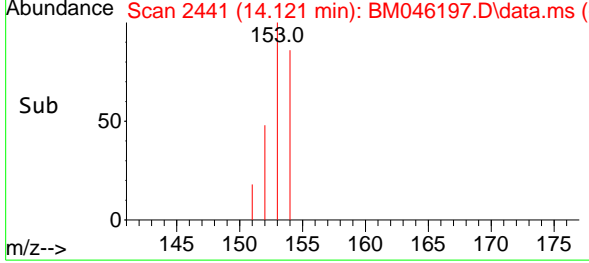
Instrument :
 BNA_M
 ClientSampleId :
 A4D59



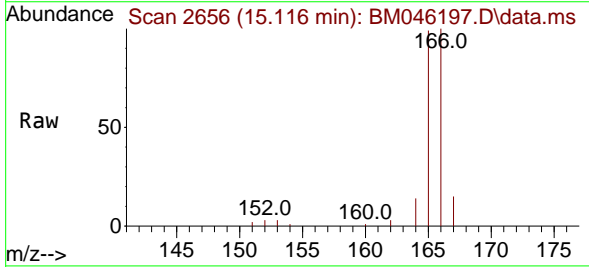
Tgt Ion:153 Resp: 13320
 Ion Ratio Lower Upper
 153 100
 152 50.9 41.3 61.9
 154 85.7 68.2 102.4

Manual Integrations
 APPROVED

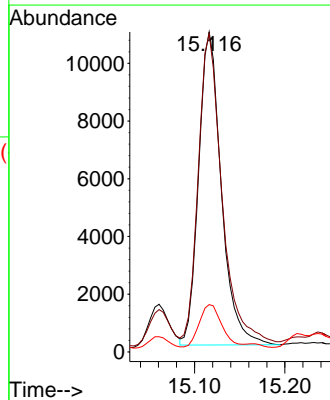
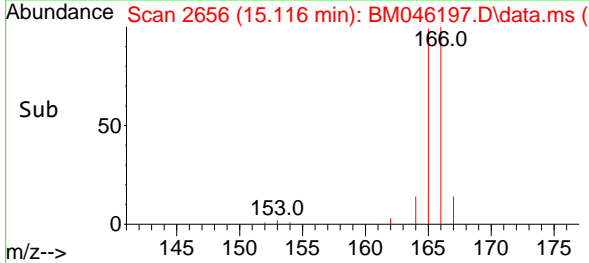
Reviewed By :Yogesh Patel 06/24/2024
 Supervised By :Jagrut Upadhyay 06/24/2024

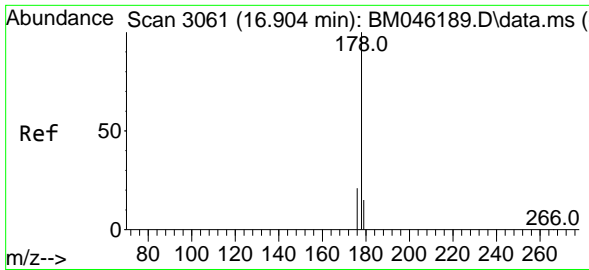


#12
 Fluorene
 Concen: 1.355 ng/u1
 RT: 15.116 min Scan# 2656
 Delta R.T. -0.065 min
 Lab File: BM046197.D
 Acq: 22 Jun 2024 14:38



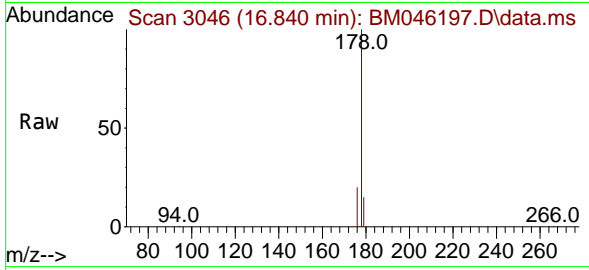
Tgt Ion:166 Resp: 19005
 Ion Ratio Lower Upper
 166 100
 165 99.4 80.4 120.6
 167 14.8 12.4 18.6





#15
 Phenanthrene
 Concen: 12.500 ng/ul m
 RT: 16.840 min Scan# 3046
 Delta R.T. -0.063 min
 Lab File: BM046197.D
 Acq: 22 Jun 2024 14:38

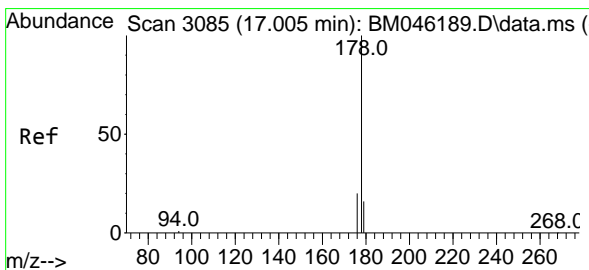
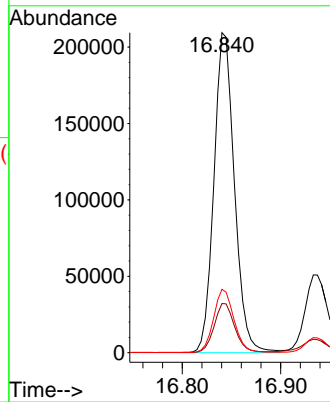
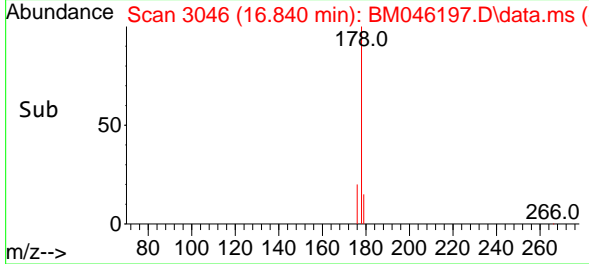
Instrument :
 BNA_M
 ClientSampleId :
 A4D59



Tgt Ion:178 Resp: 303465
 Ion Ratio Lower Upper
 178 100
 179 15.3 14.2 21.2
 176 19.8 17.1 25.7

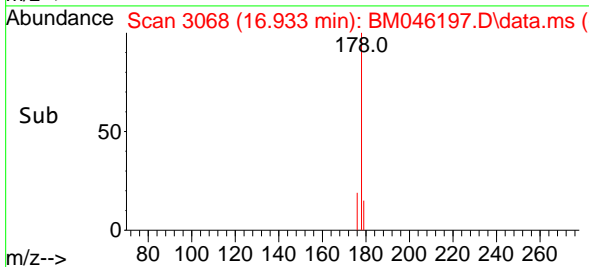
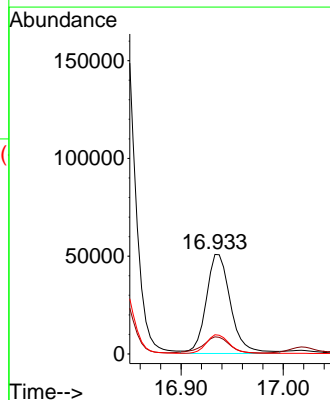
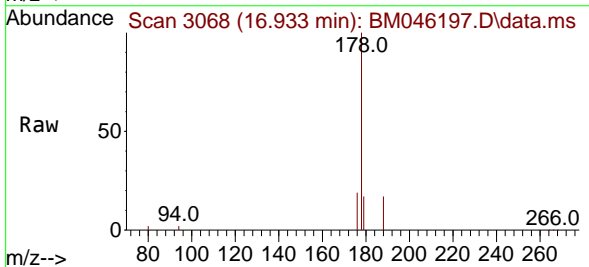
Manual Integrations
 APPROVED

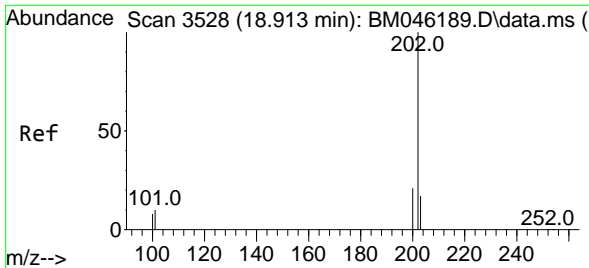
Reviewed By :Yogesh Patel 06/24/2024
 Supervised By :Jagrut Upadhyay 06/24/2024



#16
 Anthracene
 Concen: 4.661 ng/ul m
 RT: 16.933 min Scan# 3068
 Delta R.T. -0.072 min
 Lab File: BM046197.D
 Acq: 22 Jun 2024 14:38

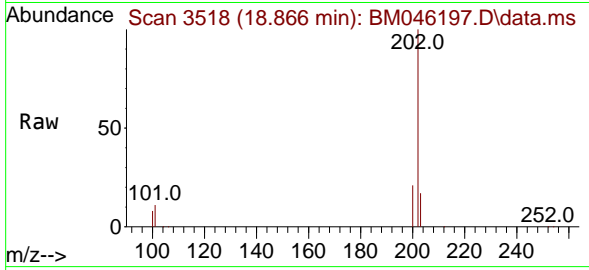
Tgt Ion:178 Resp: 84265
 Ion Ratio Lower Upper
 178 100
 179 17.3 14.9 22.3
 176 19.3 17.0 25.4





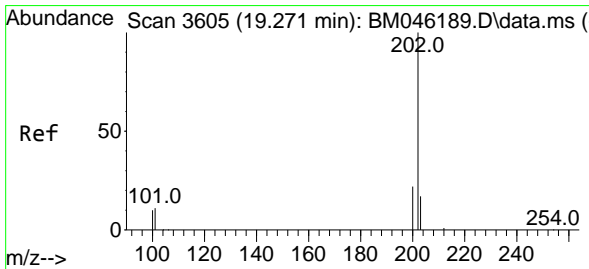
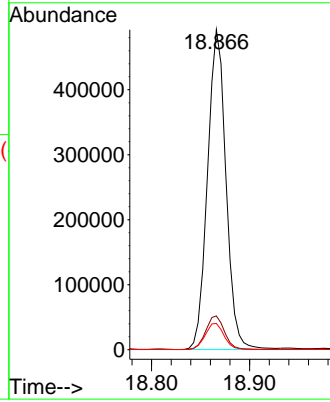
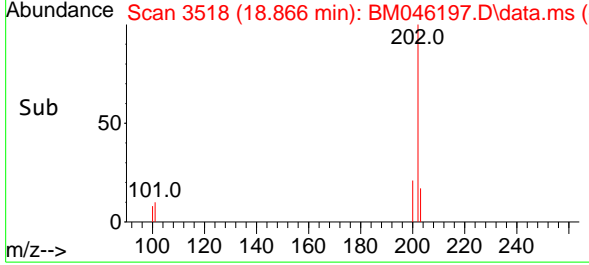
#19
 Fluoranthene
 Concen: 23.880 ng/u1
 RT: 18.866 min Scan# 3518
 Delta R.T. -0.051 min
 Lab File: BM046197.D
 Acq: 22 Jun 2024 14:38

Instrument : BNA_M
 Client Sampled : A4D59

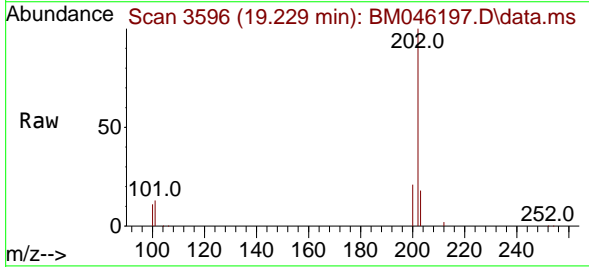


Tgt Ion:202 Resp: 644268
 Ion Ratio Lower Upper
 202 100
 101 10.5 9.6 14.4
 100 8.2 7.6 11.4

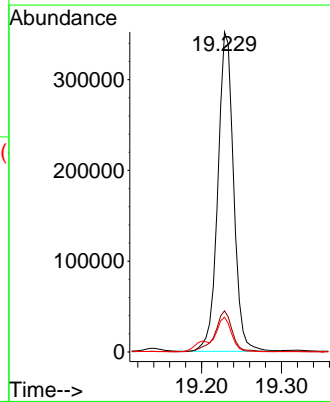
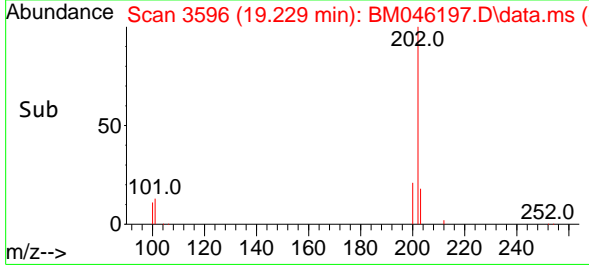
Manual Integrations
APPROVED
 Reviewed By :Yogesh Patel 06/24/2024
 Supervised By :Jagrut Upadhyay 06/24/2024

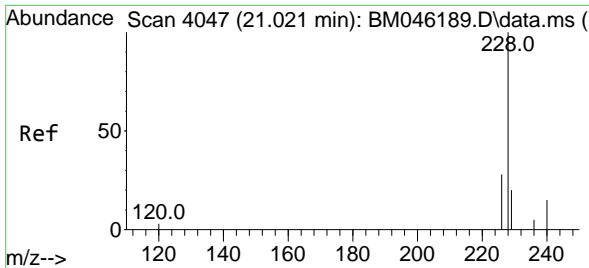


#20
 Pyrene
 Concen: 16.495 ng/u1
 RT: 19.229 min Scan# 3596
 Delta R.T. -0.046 min
 Lab File: BM046197.D
 Acq: 22 Jun 2024 14:38



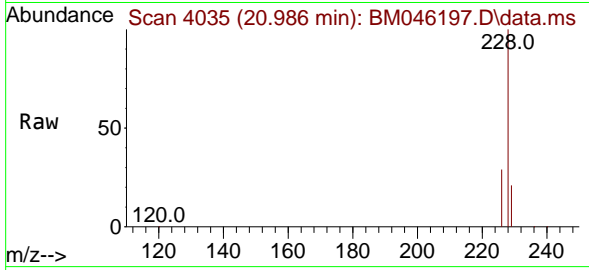
Tgt Ion:202 Resp: 481278
 Ion Ratio Lower Upper
 202 100
 101 12.9 11.3 16.9
 100 10.9 9.8 14.6





#21
 Benzo(a)anthracene
 Concen: 13.947 ng/u1
 RT: 20.986 min Scan# 4035
 Delta R.T. -0.044 min
 Lab File: BM046197.D
 Acq: 22 Jun 2024 14:38

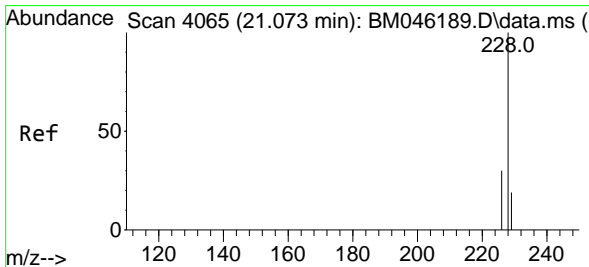
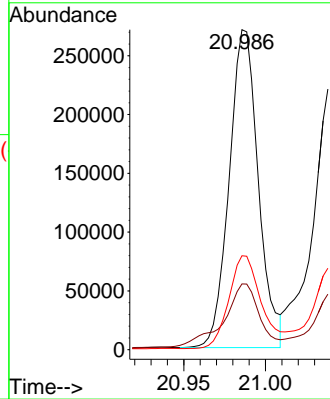
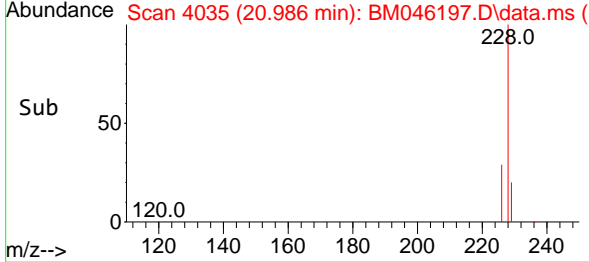
Instrument :
 BNA_M
 ClientSampleId :
 A4D59



Tgt Ion:228 Resp: 335679
 Ion Ratio Lower Upper
 228 100
 229 20.6 16.4 24.6
 226 29.3 23.4 35.2

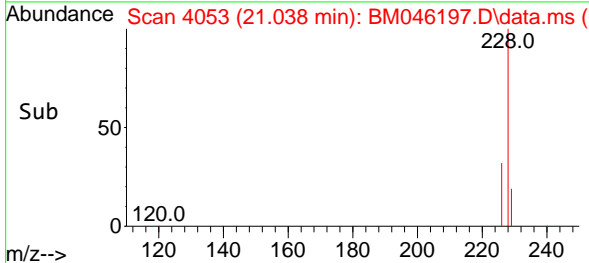
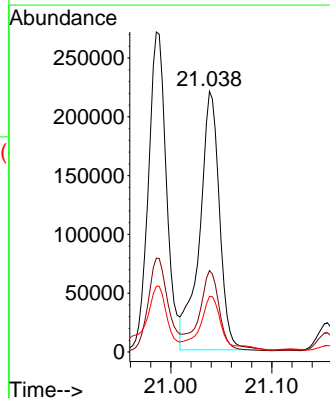
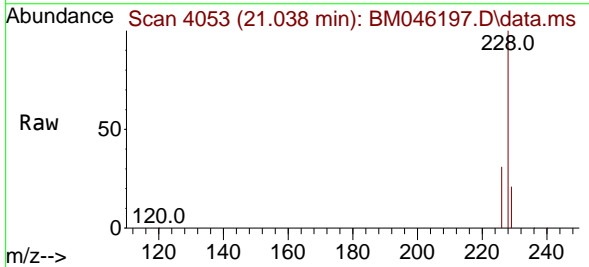
Manual Integrations
 APPROVED

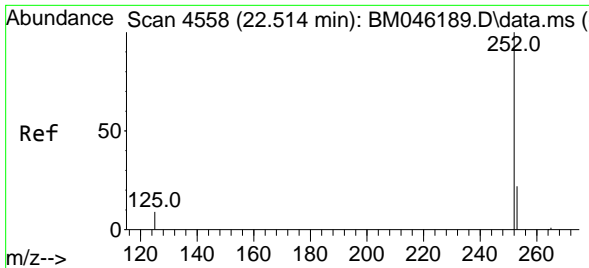
Reviewed By :Yogesh Patel 06/24/2024
 Supervised By :Jagrut Upadhyay 06/24/2024



#22
 Chrysene
 Concen: 9.780 ng/u1
 RT: 21.038 min Scan# 4053
 Delta R.T. -0.038 min
 Lab File: BM046197.D
 Acq: 22 Jun 2024 14:38

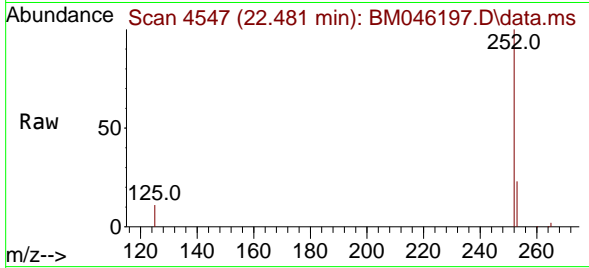
Tgt Ion:228 Resp: 300404
 Ion Ratio Lower Upper
 228 100
 226 31.2 25.2 37.8
 229 21.3 16.3 24.5





#24
 Benzo(b)fluoranthene
 Concen: 15.842 ng/ul m
 RT: 22.481 min Scan# 4547
 Delta R.T. -0.038 min
 Lab File: BM046197.D
 Acq: 22 Jun 2024 14:38

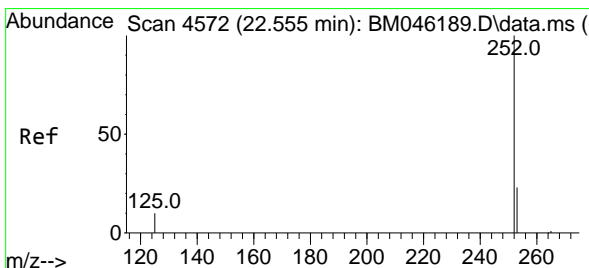
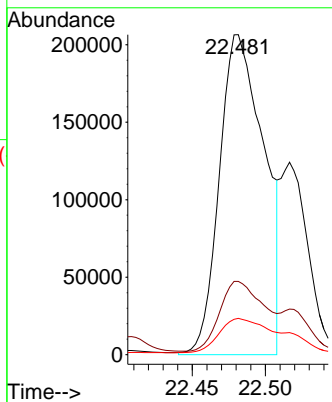
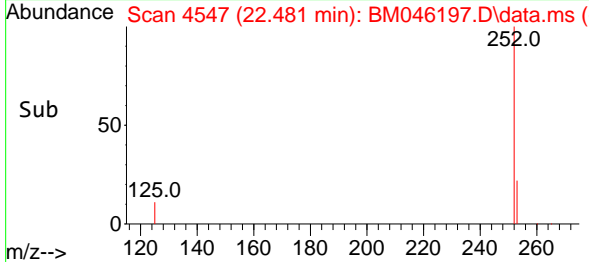
Instrument : BNA_M
 ClientSampleId : A4D59



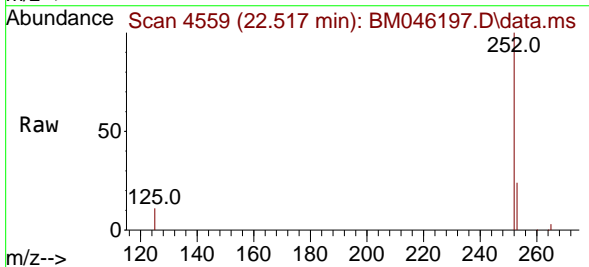
Tgt Ion:252 Resp: 43806
 Ion Ratio Lower Upper
 252 100
 253 22.9 0.0 65.8
 125 11.3 0.0 40.2

Manual Integrations
 APPROVED

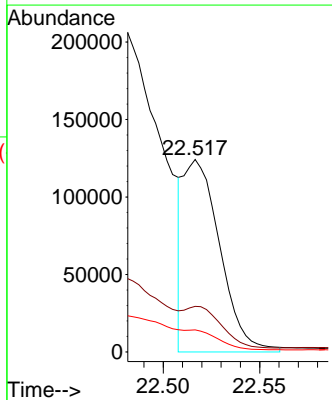
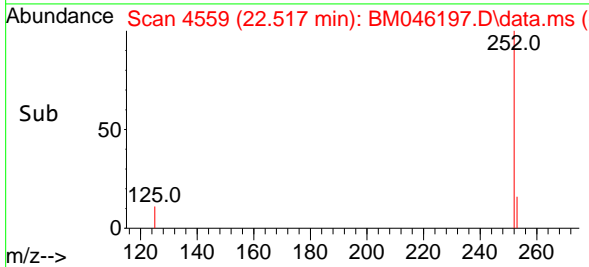
Reviewed By :Yogesh Patel 06/24/2024
 Supervised By :Jagrut Upadhyay 06/24/2024

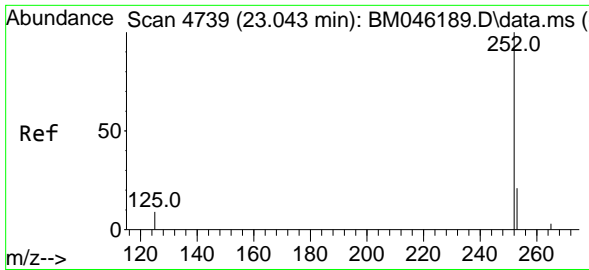


#25
 Benzo(k)fluoranthene
 Concen: 4.976 ng/ul m
 RT: 22.517 min Scan# 4559
 Delta R.T. -0.047 min
 Lab File: BM046197.D
 Acq: 22 Jun 2024 14:38



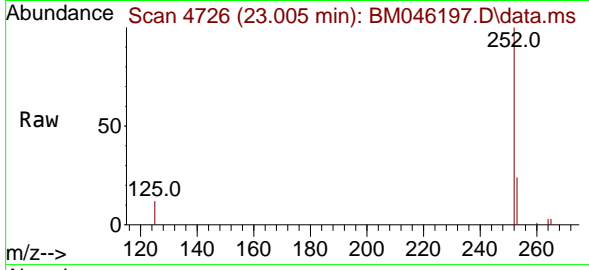
Tgt Ion:252 Resp: 163569
 Ion Ratio Lower Upper
 252 100
 253 23.7 27.2 40.8#
 125 11.5 16.6 25.0#





#26
 Benzo(a)pyrene
 Concen: 7.896 ng/u1 m
 RT: 23.005 min Scan# 4
 Delta R.T. -0.050 min
 Lab File: BM046197.D
 Acq: 22 Jun 2024 14:38

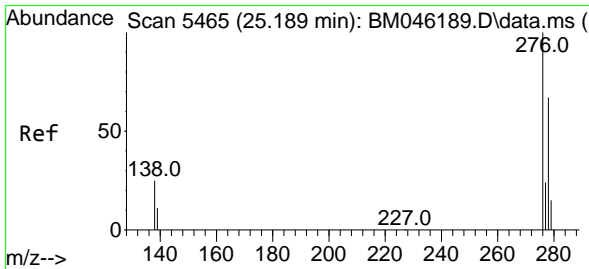
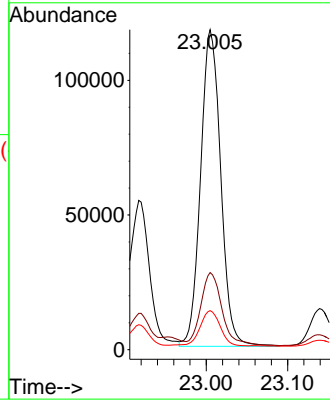
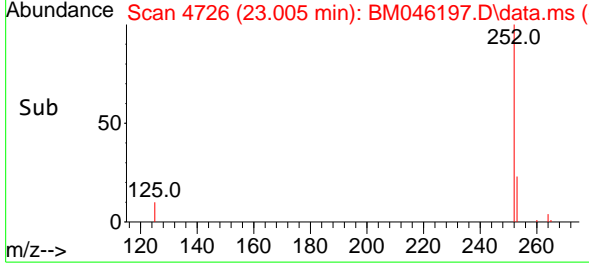
Instrument :
 BNA_M
 ClientSampleId :
 A4D59



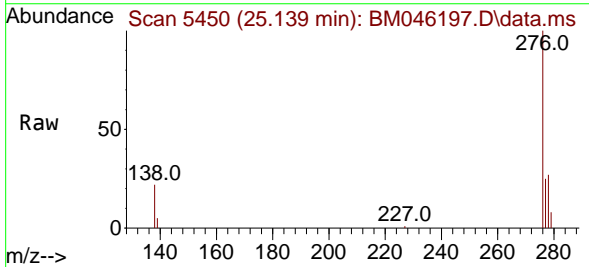
Tgt Ion:252 Resp: 20232
 Ion Ratio Lower Upper
 252 100
 253 24.1 32.1 48.1
 125 12.2 21.2 31.8

Manual Integrations
 APPROVED

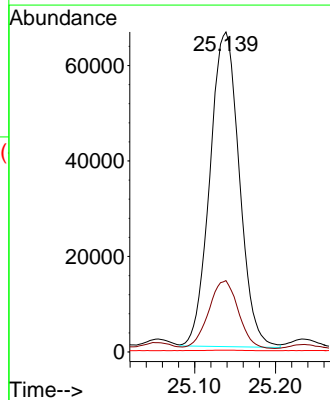
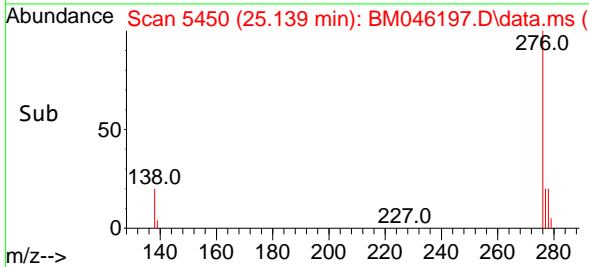
Reviewed By :Yogesh Patel 06/24/2024
 Supervised By :Jagrut Upadhyay 06/24/2024

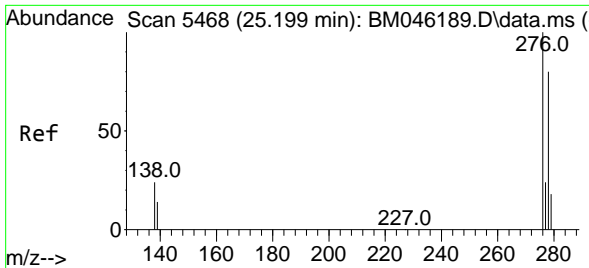


#27
 Indeno(1,2,3-cd)pyrene
 Concen: 3.978 ng/u1
 RT: 25.139 min Scan# 5450
 Delta R.T. -0.064 min
 Lab File: BM046197.D
 Acq: 22 Jun 2024 14:38



Tgt Ion:276 Resp: 166812
 Ion Ratio Lower Upper
 276 100
 138 21.6 21.0 31.4
 227 0.2 0.0 0.0





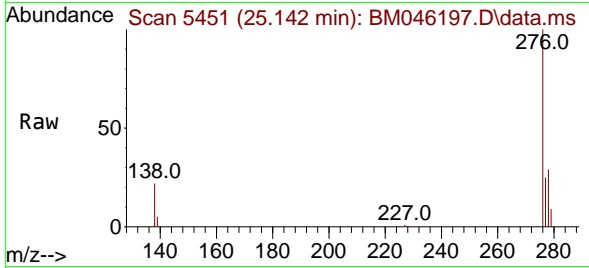
#28
 Dibenzo(a,h)anthracene
 Concen: 1.620 ng/ul
 RT: 25.142 min Scan# 5468
 Delta R.T. -0.074 min
 Lab File: BM046197.D
 Acq: 22 Jun 2024 14:38

Instrument :

BNA_M

ClientSampleId :

A4D59



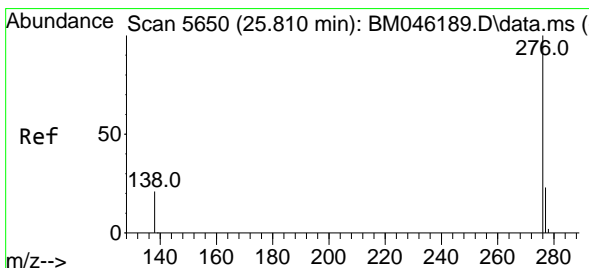
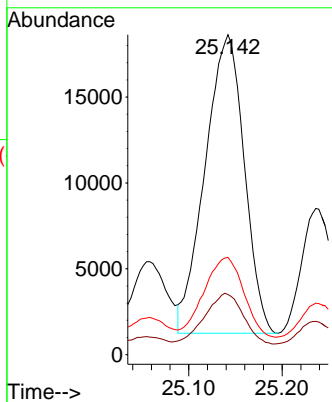
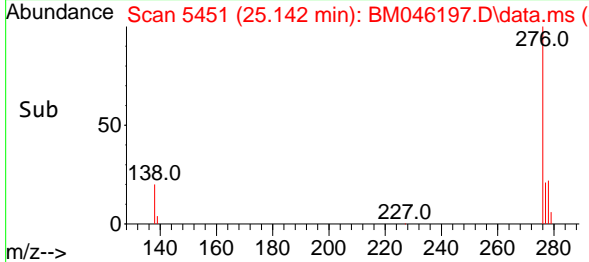
Tgt Ion:278 Resp: 50579
 Ion Ratio Lower Upper
 278 100
 139 18.8 17.6 26.4
 279 30.4 26.3 39.5

Manual Integrations

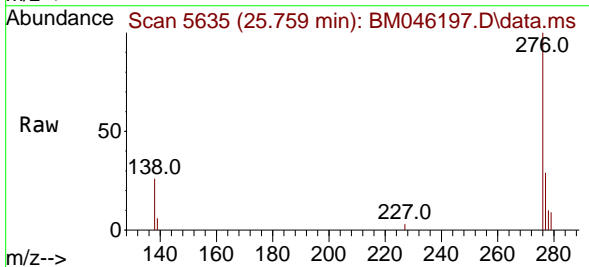
APPROVED

Reviewed By :Yogesh Patel 06/24/2024

Supervised By :Jagrut Upadhyay 06/24/2024



#29
 Benzo(g,h,i)perylene
 Concen: 0.700 ng/ul
 RT: 25.759 min Scan# 5635
 Delta R.T. -0.070 min
 Lab File: BM046197.D
 Acq: 22 Jun 2024 14:38



Tgt Ion:276 Resp: 25158
 Ion Ratio Lower Upper
 276 100
 138 25.9 21.7 32.5
 277 29.1 20.4 30.6

