

Data Path : Z:\svoasrv\HPCHEM1\BNA_M\Data\BM062224\
 Data File : BM046227.D
 Acq On : 23 Jun 2024 10:11
 Operator : MA/JU
 Sample : P2776-22
 Misc :
 ALS Vial : 42 Sample Multiplier: 1

Instrument :
 BNA_M
 ClientSampleId :
 A4C76

Manual Integrations
 APPROVED

Reviewed By :Yogesh Patel 06/24/2024
 Supervised By :Jagrut Upadhyay 06/24/2024

Quant Time: Jun 24 02:29:24 2024
 Quant Method : Z:\svoasrv\HPCHEM1\BNA_M\Methods\SFAM-EPA-SIM-BM061824.M
 Quant Title : ASP BNA STANDARDS FOR 5 POINT CALIBRATION
 QLast Update : Mon Jun 24 02:25:34 2024
 Response via : Initial Calibration

Compound	R.T.	QIon	Response	Conc	Units	Dev(Min)	
Internal Standards							
1) 1,4-Dichlorobenzene-d4	7.405	152	2718	0.400	ng/ul	-0.06	
4) Naphthalene-d8	10.172	136	8527	0.400	ng/ul	-0.08	
9) Acenaphthene-d10	14.053	164	4909	0.400	ng/ul	-0.06	
13) Phenanthrene-d10	16.795	188	10928m	0.400	ng/ul	-0.07	
17) Chrysene-d12	21.000	240	7723m	0.400	ng/ul	-0.04	
23) Perylene-d12	23.089	264	10217	0.400	ng/ul	#-0.05	
System Monitoring Compounds							
3) 1,4-Dioxane-d8	3.021	96	14485	3.884	ng/ul	-0.03	
6) 2-Methylnaphthalene-d10	11.783	152	3903	0.341	ng/ul	-0.08	
18) Fluoranthene-d10	18.830	212	9342	0.404	ng/ul	-0.05	
Target Compounds							
							Qvalue
5) Naphthalene	10.222	128	12989	0.546	ng/ul		95
7) 2-Methylnaphthalene	11.860	142	5254	0.393	ng/ul		96
8) 1-Methylnaphthalene	12.075	142	4142	0.282	ng/ul		99
10) Acenaphthylene	13.767	152	47552	2.042	ng/ul		97
11) Acenaphthene	14.114	153	13148	0.782	ng/ul		98
12) Fluorene	15.108	166	16924	0.938	ng/ul		99
14) Pentachlorophenol	16.483	266	275	0.084	ng/ul		94
15) Phenanthrene	16.837	178	417035m	13.583	ng/ul		
16) Anthracene	16.930	178	82000m	3.586	ng/ul		
19) Fluoranthene	18.858	202	984903	29.454	ng/ul		97
20) Pyrene	19.225	202	685406	18.953	ng/ul#		94
21) Benzo(a)anthracene	20.982	228	414762	13.904	ng/ul		99
22) Chrysene	21.035	228	471582	12.387	ng/ul		98
24) Benzo(b)fluoranthene	22.478	252	728600m	19.794	ng/ul		
25) Benzo(k)fluoranthene	22.510	252	217872m	4.979	ng/ul		
26) Benzo(a)pyrene	23.001	252	247828	7.266	ng/ul#		74
27) Indeno(1,2,3-cd)pyrene	25.132	276	270366	4.843	ng/ul#		99
28) Dibenzo(a,h)anthracene	25.138	278	88261m	2.124	ng/ul		
29) Benzo(g,h,i)perylene	25.752	276	42490	0.888	ng/ul		97

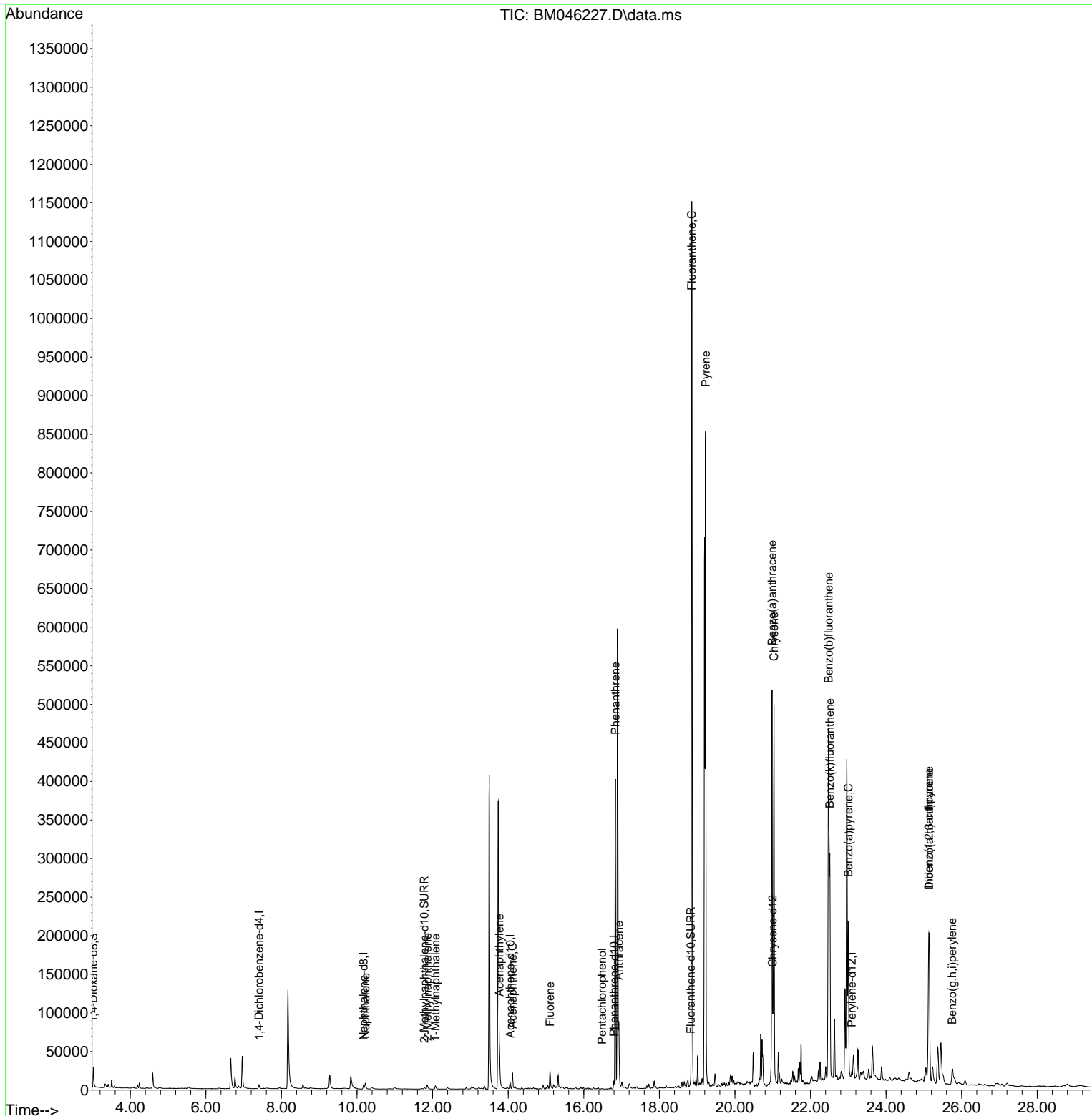
(#) = qualifier out of range (m) = manual integration (+) = signals summed

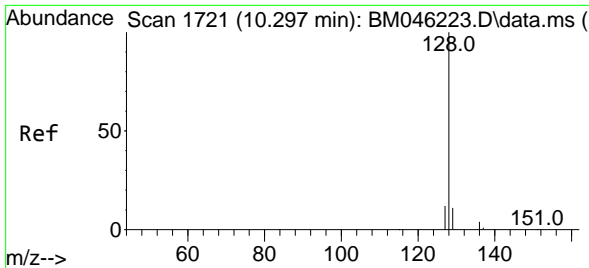
Data Path : Z:\svoasrv\HPCHEM1\BNA_M\Data\BM062224\
 Data File : BM046227.D
 Acq On : 23 Jun 2024 10:11
 Operator : MA/JU
 Sample : P2776-22
 Misc :
 ALS Vial : 42 Sample Multiplier: 1

Instrument :
 BNA_M
 ClientSampleId :
 A4C76

Quant Time: Jun 24 02:29:24 2024
 Quant Method : Z:\svoasrv\HPCHEM1\BNA_M\Methods\SFAM-EPA-SIM-BM061824.M
 Quant Title : ASP BNA STANDARDS FOR 5 POINT CALIBRATION
 QLast Update : Mon Jun 24 02:25:34 2024
 Response via : Initial Calibration

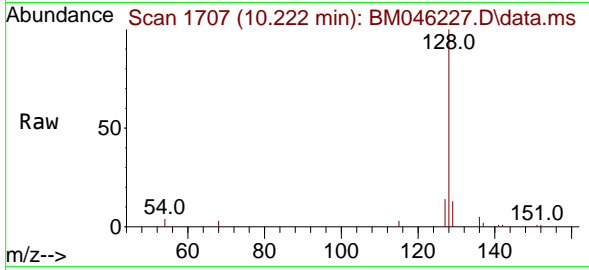
Manual Integrations
APPROVED
 Reviewed By :Yogesh Patel 06/24/2024
 Supervised By :Jagrut Upadhyay 06/24/2024





#5
 Naphthalene
 Concen: 0.546 ng/uI
 RT: 10.222 min Scan# 111
 Delta R.T. -0.081 min
 Lab File: BM046227.D
 Acq: 23 Jun 2024 10:11

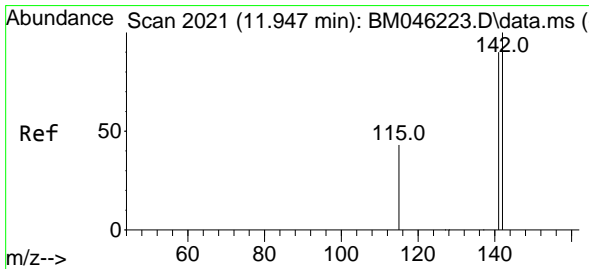
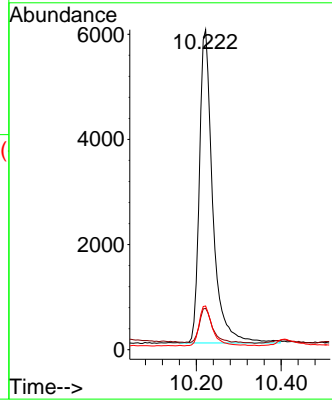
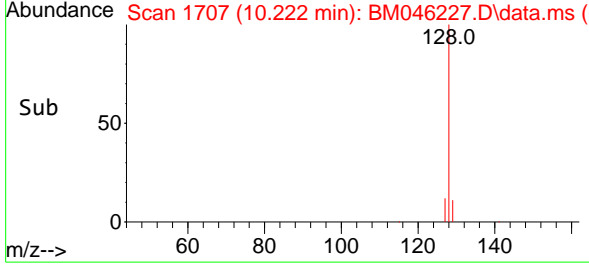
Instrument : BNA_M
 ClientSampleId : A4C76



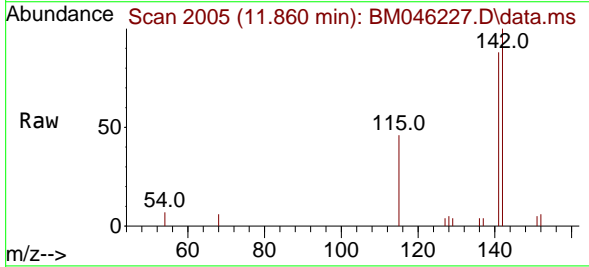
Tgt Ion:128 Resp: 12989
 Ion Ratio Lower Upper
 128 100
 129 12.9 11.8 17.6
 127 13.7 12.8 19.2

Manual Integrations
 APPROVED

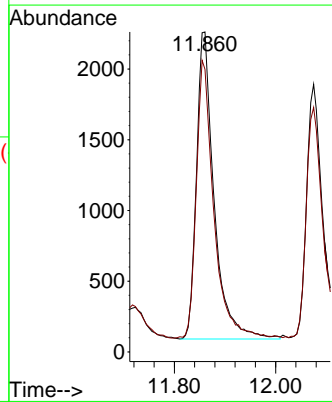
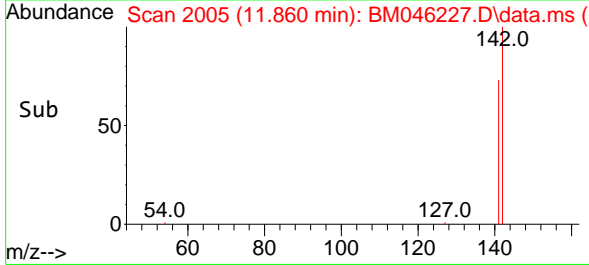
Reviewed By :Yogesh Patel 06/24/2024
 Supervised By :Jagrut Upadhyay 06/24/2024

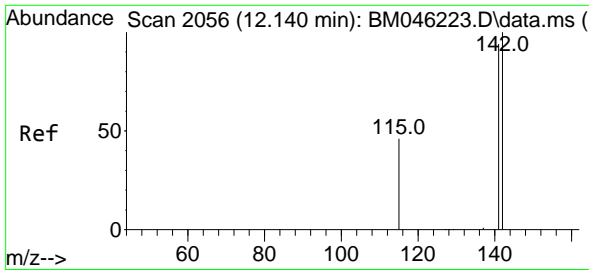


#7
 2-Methylnaphthalene
 Concen: 0.393 ng/uI
 RT: 11.860 min Scan# 2005
 Delta R.T. -0.087 min
 Lab File: BM046227.D
 Acq: 23 Jun 2024 10:11



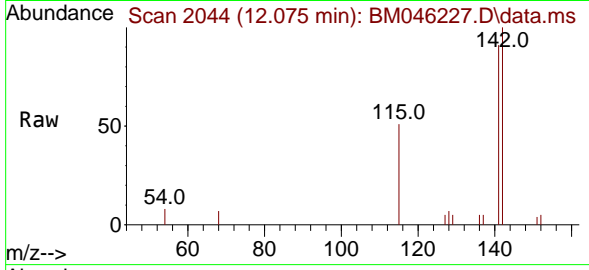
Tgt Ion:142 Resp: 5254
 Ion Ratio Lower Upper
 142 100
 141 89.6 74.6 111.8





#8
 1-Methylnaphthalene
 Concen: 0.282 ng/ul
 RT: 12.075 min Scan# 2056
 Delta R.T. -0.076 min
 Lab File: BM046227.D
 Acq: 23 Jun 2024 10:11

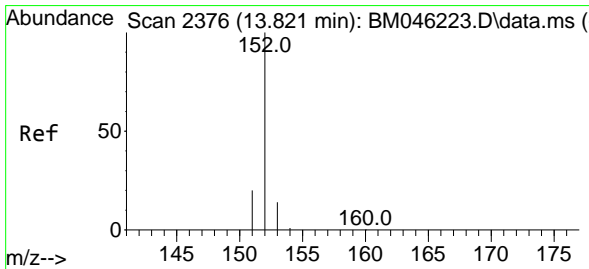
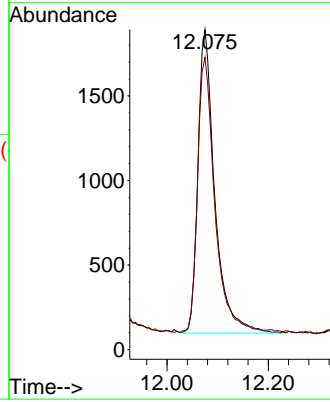
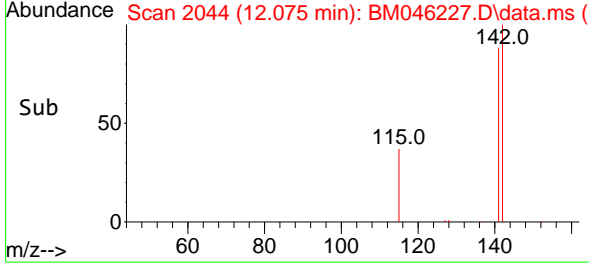
Instrument :
 BNA_M
 ClientSampleId :
 A4C76



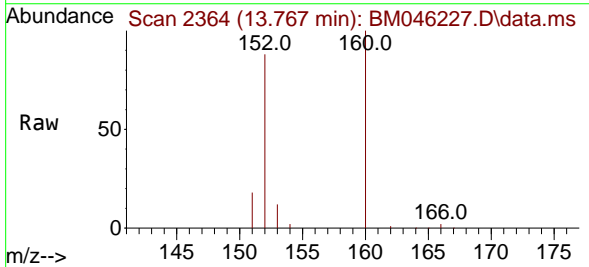
Tgt Ion:142 Resp: 414
 Ion Ratio Lower Upper
 142 100
 141 93.0 75.2 112.8

Manual Integrations
 APPROVED

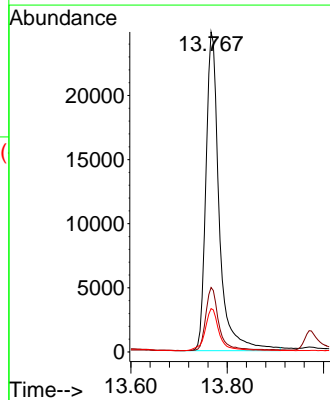
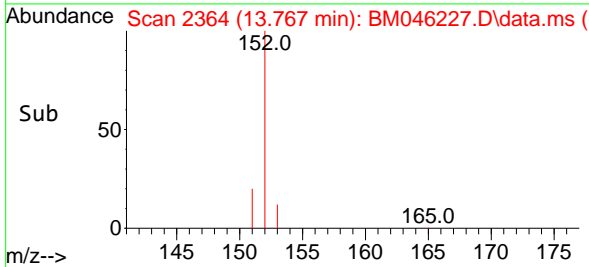
Reviewed By :Yogesh Patel 06/24/2024
 Supervised By :Jagrut Upadhyay 06/24/2024

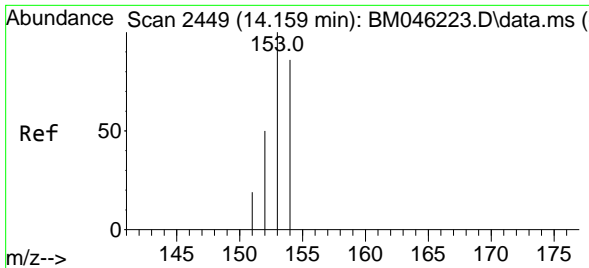


#10
 Acenaphthylene
 Concen: 2.042 ng/ul
 RT: 13.767 min Scan# 2364
 Delta R.T. -0.068 min
 Lab File: BM046227.D
 Acq: 23 Jun 2024 10:11



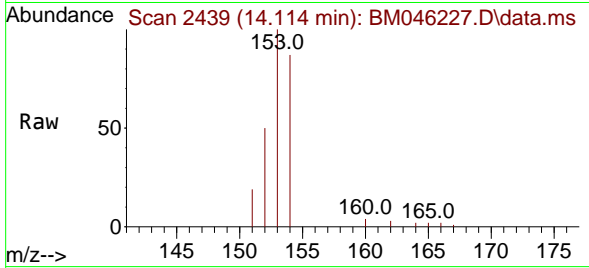
Tgt Ion:152 Resp: 47552
 Ion Ratio Lower Upper
 152 100
 151 20.1 17.4 26.2
 153 13.6 11.8 17.8





#11
 Acenaphthene
 Concen: 0.782 ng/u1
 RT: 14.114 min Scan# 2439
 Delta R.T. -0.059 min
 Lab File: BM046227.D
 Acq: 23 Jun 2024 10:11

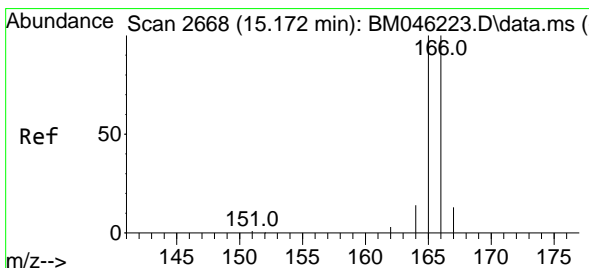
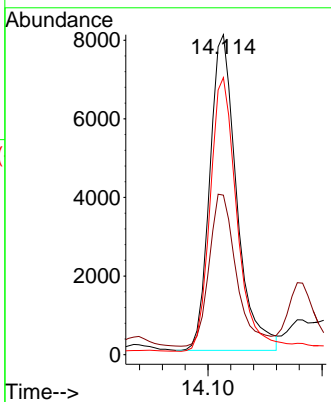
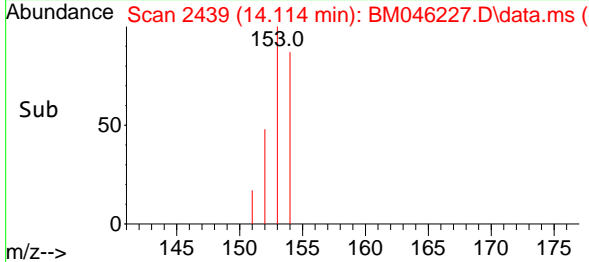
Instrument :
 BNA_M
 ClientSampleId :
 A4C76



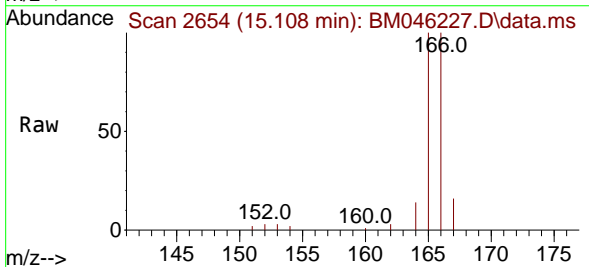
Tgt Ion:153 Resp: 13148
 Ion Ratio Lower Upper
 153 100
 152 49.8 41.3 61.9
 154 86.6 68.2 102.4

Manual Integrations
 APPROVED

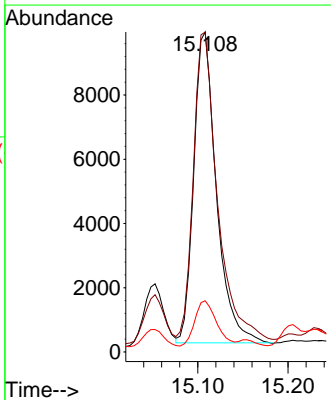
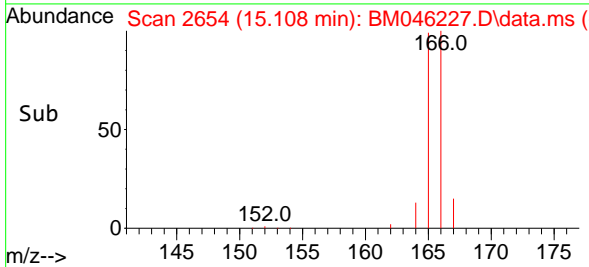
Reviewed By :Yogesh Patel 06/24/2024
 Supervised By :Jagrut Upadhyay 06/24/2024

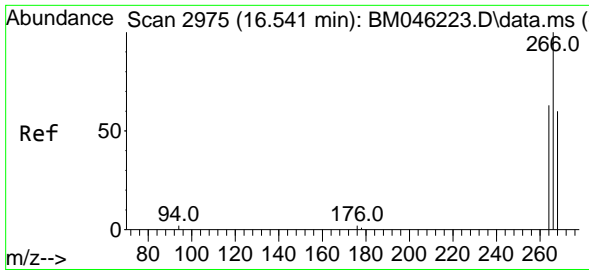


#12
 Fluorene
 Concen: 0.938 ng/u1
 RT: 15.108 min Scan# 2654
 Delta R.T. -0.073 min
 Lab File: BM046227.D
 Acq: 23 Jun 2024 10:11



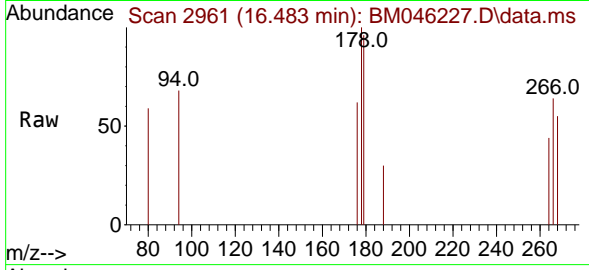
Tgt Ion:166 Resp: 16924
 Ion Ratio Lower Upper
 166 100
 165 99.9 80.4 120.6
 167 16.0 12.4 18.6





#14
 Pentachlorophenol
 Concen: 0.084 ng/uI
 RT: 16.483 min Scan# 2975
 Delta R.T. -0.083 min
 Lab File: BM046227.D
 Acq: 23 Jun 2024 10:11

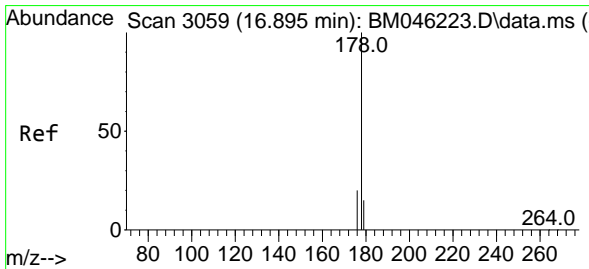
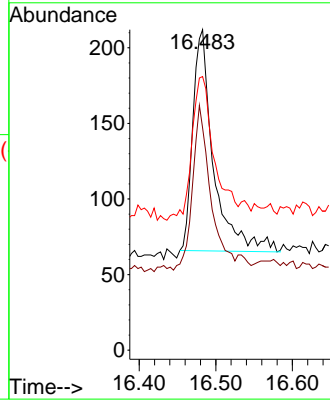
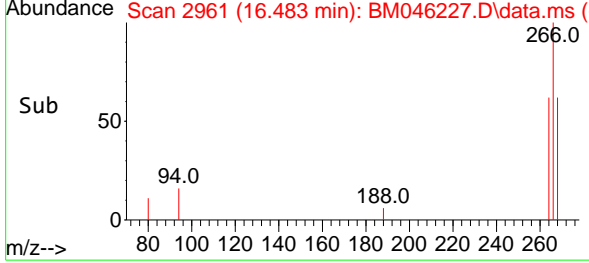
Instrument :
 BNA_M
 ClientSampleID :
 A4C76



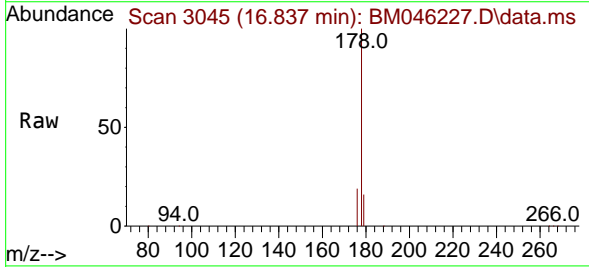
Tgt Ion:266 Resp: 279
 Ion Ratio Lower Upper
 266 100
 264 57.5 50.9 76.3
 268 61.8 52.3 78.5

Manual Integrations
 APPROVED

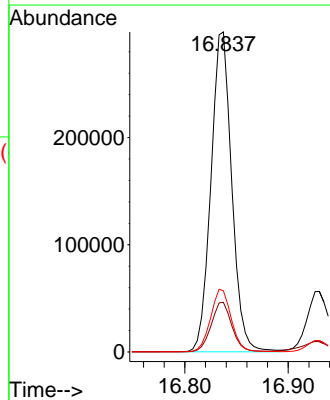
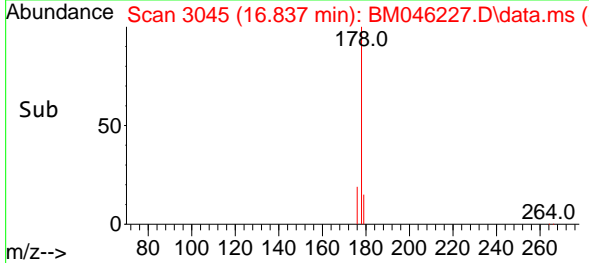
Reviewed By :Yogesh Patel 06/24/2024
 Supervised By :Jagrut Upadhyay 06/24/2024

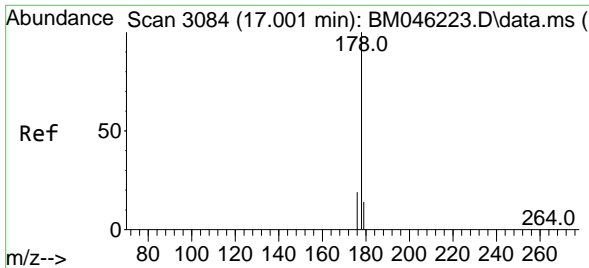


#15
 Phenanthrene
 Concen: 13.583 ng/uI m
 RT: 16.837 min Scan# 3045
 Delta R.T. -0.066 min
 Lab File: BM046227.D
 Acq: 23 Jun 2024 10:11



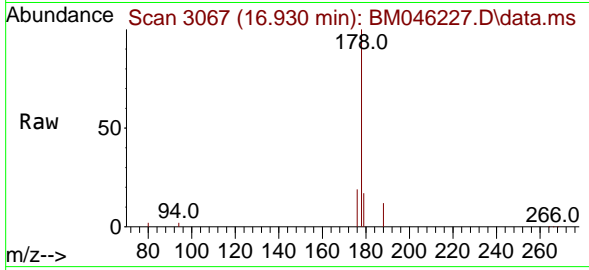
Tgt Ion:178 Resp: 417035
 Ion Ratio Lower Upper
 178 100
 179 15.5 14.2 21.2
 176 19.1 17.1 25.7





#16
 Anthracene
 Concen: 3.586 ng/u1 m
 RT: 16.930 min Scan# 3084
 Delta R.T. -0.075 min
 Lab File: BM046227.D
 Acq: 23 Jun 2024 10:11

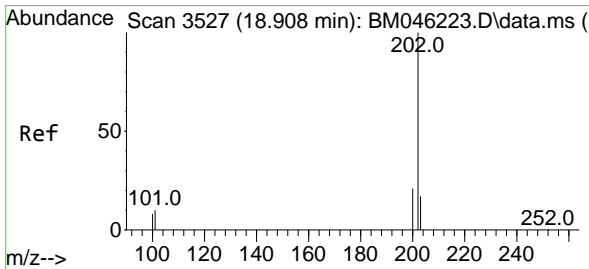
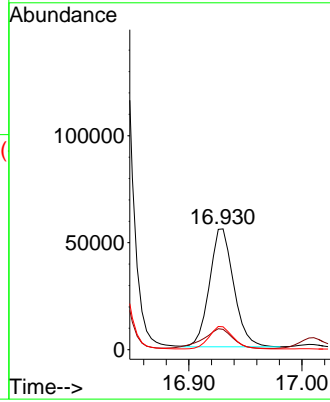
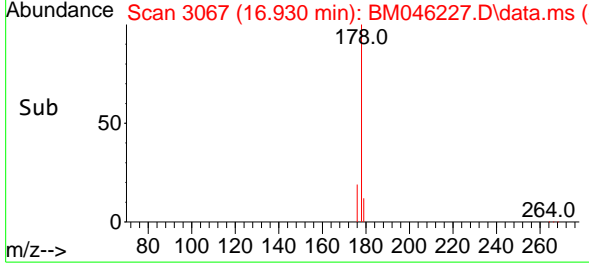
Instrument : BNA_M
 ClientSampleId : A4C76



Tgt Ion:178 Resp: 82000
 Ion Ratio Lower Upper
 178 100
 179 16.9 14.9 22.3
 176 18.9 17.0 25.4

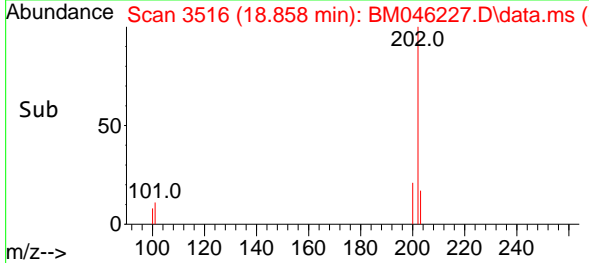
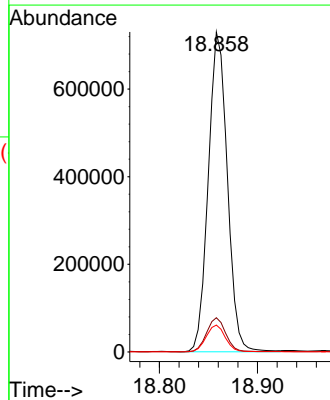
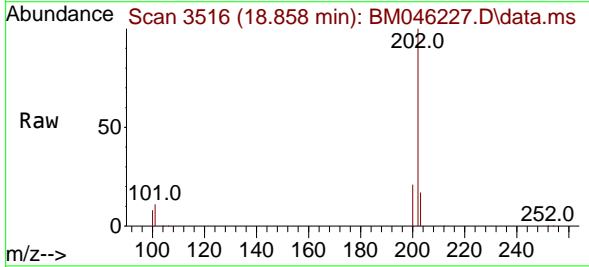
Manual Integrations
 APPROVED

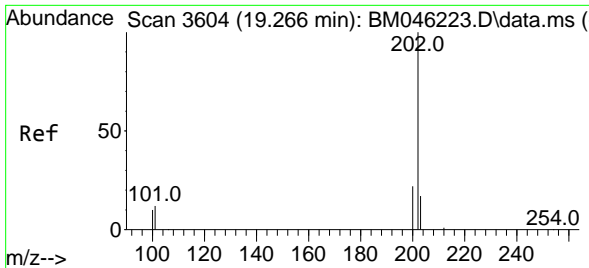
Reviewed By :Yogesh Patel 06/24/2024
 Supervised By :Jagrut Upadhyay 06/24/2024



#19
 Fluoranthene
 Concen: 29.454 ng/u1
 RT: 18.858 min Scan# 3516
 Delta R.T. -0.059 min
 Lab File: BM046227.D
 Acq: 23 Jun 2024 10:11

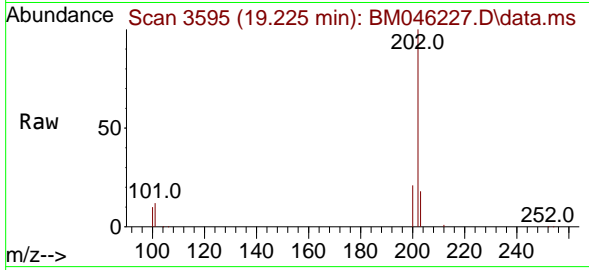
Tgt Ion:202 Resp: 984903
 Ion Ratio Lower Upper
 202 100
 101 10.7 9.6 14.4
 100 8.4 7.6 11.4





#20
 Pyrene
 Concen: 18.953 ng/u1
 RT: 19.225 min Scan# 3595
 Delta R.T. -0.050 min
 Lab File: BM046227.D
 Acq: 23 Jun 2024 10:11

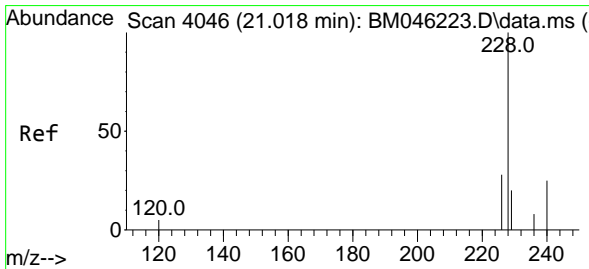
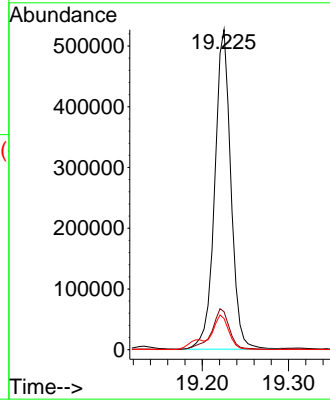
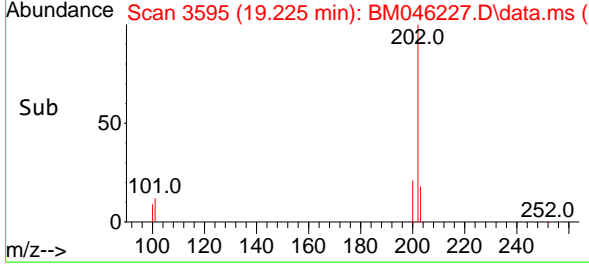
Instrument : BNA_M
 Client Sample Id : A4C76



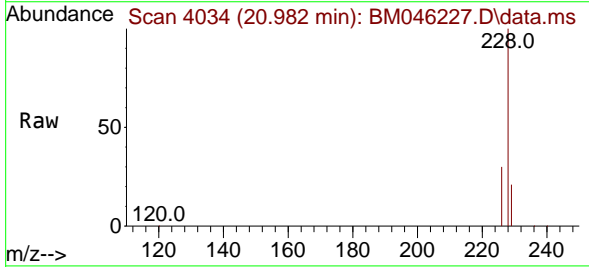
Tgt Ion:202 Resp: 685400
 Ion Ratio Lower Upper
 202 100
 101 11.8 11.3 16.9
 100 9.7 9.8 14.6

Manual Integrations
 APPROVED

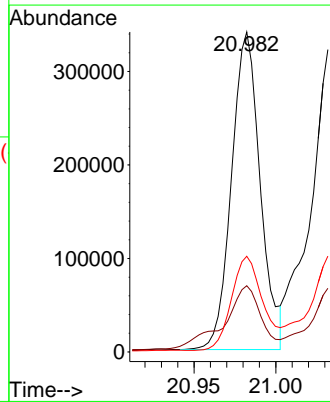
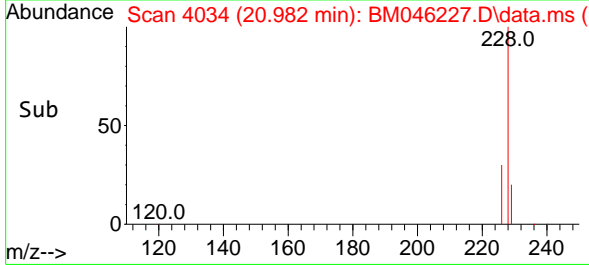
Reviewed By :Yogesh Patel 06/24/2024
 Supervised By :Jagrut Upadhyay 06/24/2024

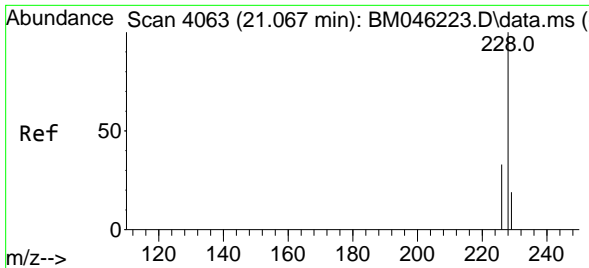


#21
 Benzo(a)anthracene
 Concen: 13.904 ng/u1
 RT: 20.982 min Scan# 4034
 Delta R.T. -0.047 min
 Lab File: BM046227.D
 Acq: 23 Jun 2024 10:11



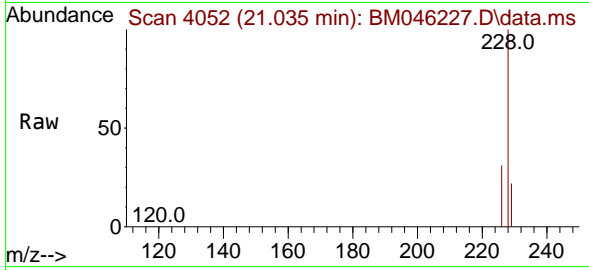
Tgt Ion:228 Resp: 414762
 Ion Ratio Lower Upper
 228 100
 229 20.7 16.4 24.6
 226 29.9 23.4 35.2





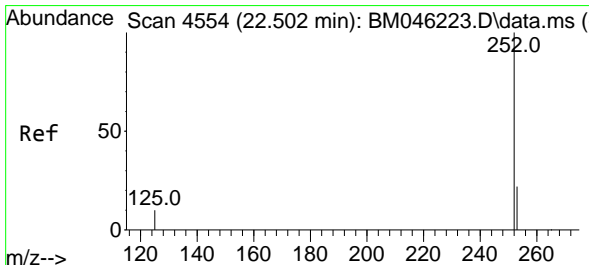
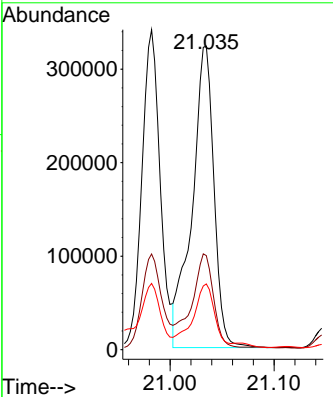
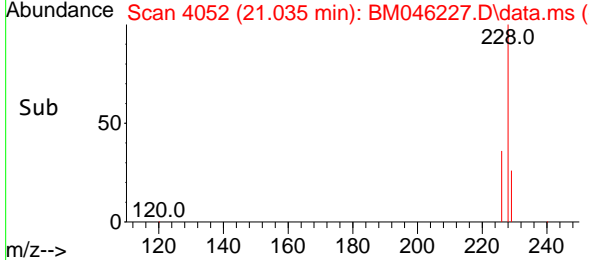
#22
 Chrysene
 Concen: 12.387 ng/ul
 RT: 21.035 min Scan# 4063
 Delta R.T. -0.041 min
 Lab File: BM046227.D
 Acq: 23 Jun 2024 10:11

Instrument : BNA_M
 Client Sample ID : A4C76

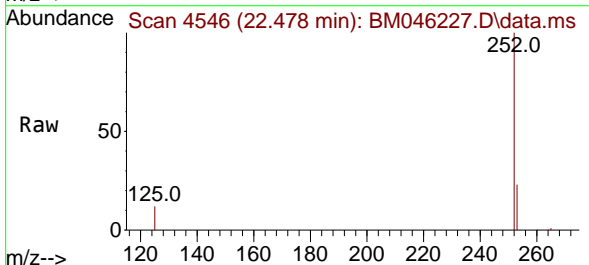


Tgt Ion: 228 Resp: 47158
 Ion Ratio Lower Upper
 228 100
 226 31.0 25.2 37.8
 229 21.7 16.3 24.5

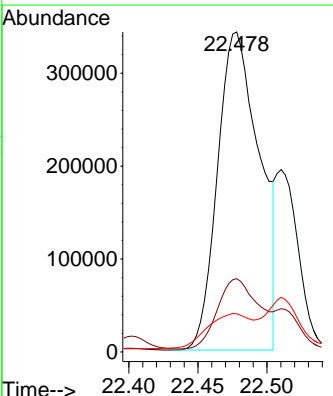
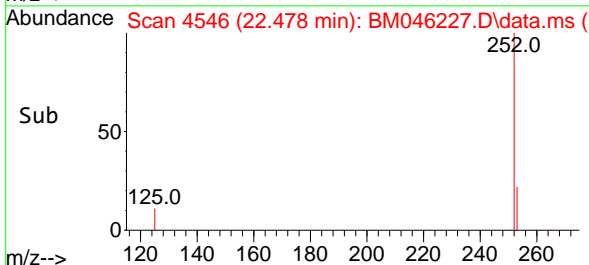
Manual Integrations
APPROVED
 Reviewed By : Yogesh Patel 06/24/2024
 Supervised By : Jagrut Upadhyay 06/24/2024

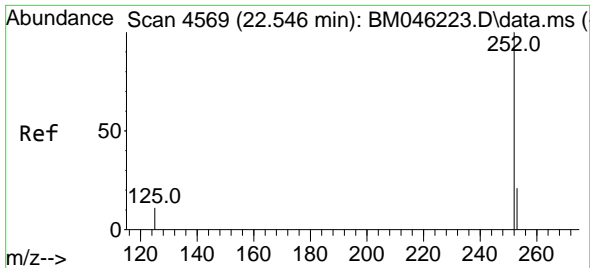


#24
 Benzo(b)fluoranthene
 Concen: 19.794 ng/ul m
 RT: 22.478 min Scan# 4546
 Delta R.T. -0.041 min
 Lab File: BM046227.D
 Acq: 23 Jun 2024 10:11



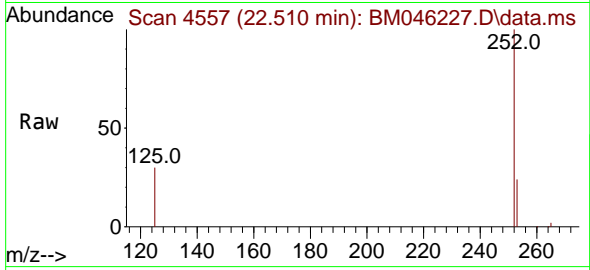
Tgt Ion: 252 Resp: 728600
 Ion Ratio Lower Upper
 252 100
 253 22.9 0.0 65.8
 125 11.9 0.0 40.2





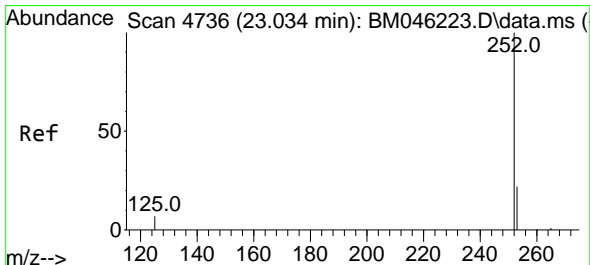
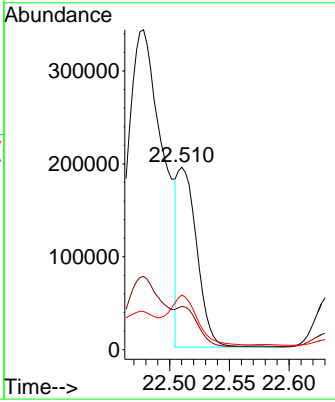
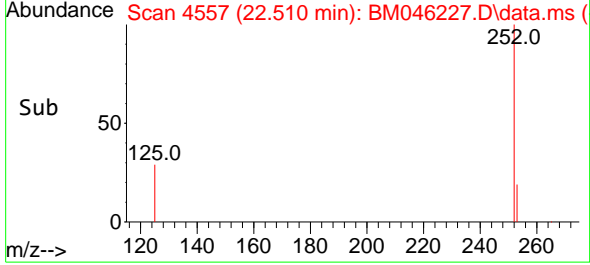
#25
 Benzo(k)fluoranthene
 Concen: 4.979 ng/ul m
 RT: 22.510 min Scan# 4
 Delta R.T. -0.053 min
 Lab File: BM046227.D
 Acq: 23 Jun 2024 10:11

Instrument : BNA_M
 ClientSampleId : A4C76

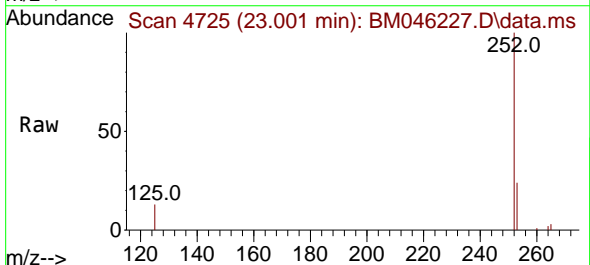


Tgt Ion:252 Resp: 21787
 Ion Ratio Lower Upper
 252 100
 253 23.7 27.2 40.8#
 125 30.0 16.6 25.0#

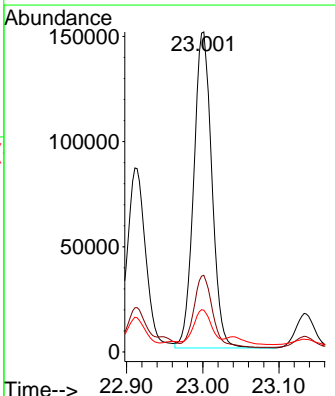
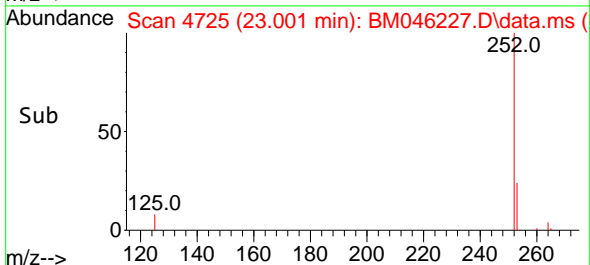
Manual Integrations
APPROVED
 Reviewed By :Yogesh Patel 06/24/2024
 Supervised By :Jagrut Upadhyay 06/24/2024

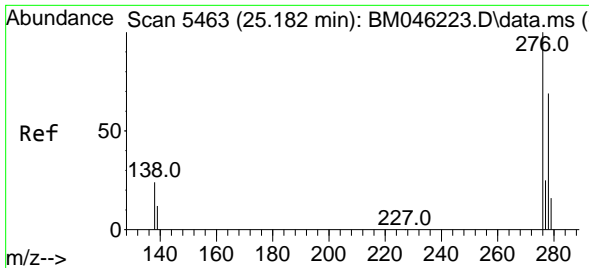


#26
 Benzo(a)pyrene
 Concen: 7.266 ng/ul
 RT: 23.001 min Scan# 4725
 Delta R.T. -0.053 min
 Lab File: BM046227.D
 Acq: 23 Jun 2024 10:11



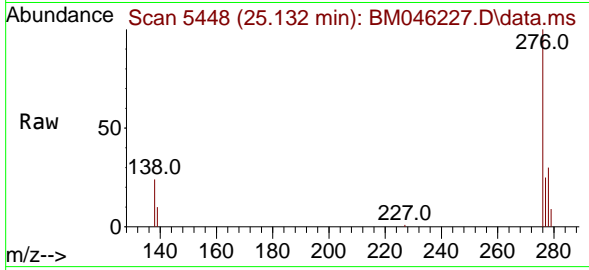
Tgt Ion:252 Resp: 247828
 Ion Ratio Lower Upper
 252 100
 253 24.0 32.1 48.1#
 125 13.0 21.2 31.8#





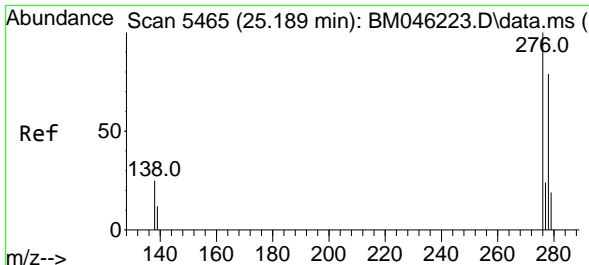
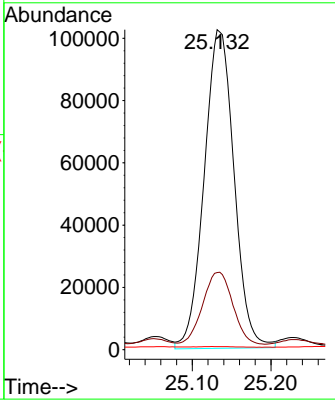
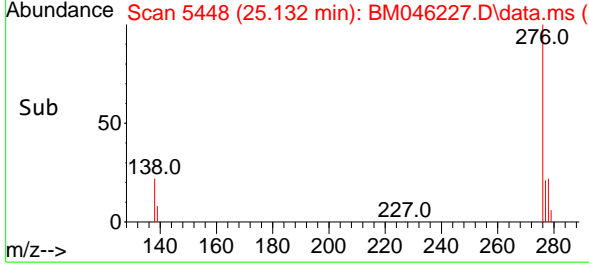
#27
 Indeno(1,2,3-cd)pyrene
 Concen: 4.843 ng/ul
 RT: 25.132 min Scan# 5448
 Delta R.T. -0.071 min
 Lab File: BM046227.D
 Acq: 23 Jun 2024 10:11

Instrument : BNA_M
 ClientSampleId : A4C76

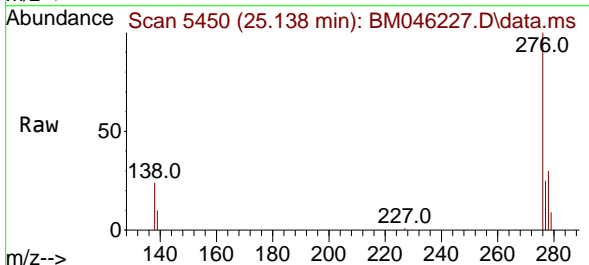


Tgt Ion:276 Resp: 270360
 Ion Ratio Lower Upper
 276 100
 138 25.5 21.0 31.4
 227 0.0 0.0 0.0

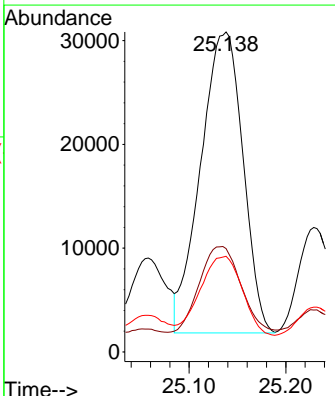
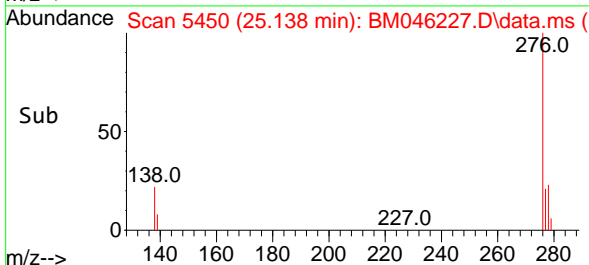
Manual Integrations
APPROVED
 Reviewed By :Yogesh Patel 06/24/2024
 Supervised By :Jagrut Upadhyay 06/24/2024

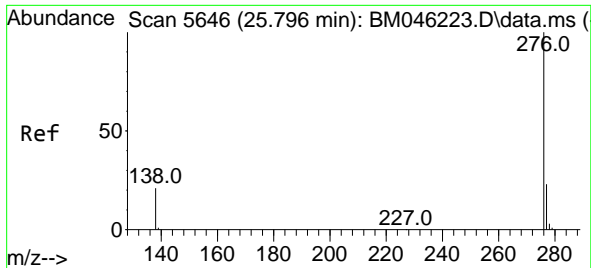


#28
 Dibenzo(a,h)anthracene
 Concen: 2.124 ng/ul m
 RT: 25.138 min Scan# 5450
 Delta R.T. -0.078 min
 Lab File: BM046227.D
 Acq: 23 Jun 2024 10:11



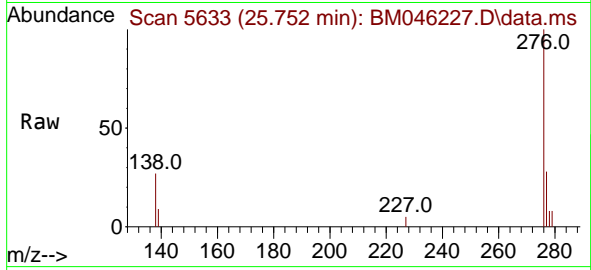
Tgt Ion:278 Resp: 88261
 Ion Ratio Lower Upper
 278 100
 139 32.3 17.6 26.4#
 279 29.9 26.3 39.5





#29
 Benzo(g,h,i)perylene
 Concen: 0.888 ng/ul
 RT: 25.752 min Scan# 50
 Delta R.T. -0.078 min
 Lab File: BM046227.D
 Acq: 23 Jun 2024 10:11

Instrument :
 BNA_M
 ClientSampleId :
 A4C76



Tgt Ion: 276 Resp: 42490
 Ion Ratio Lower Upper
 276 100
 138 27.3 21.7 32.5
 277 28.3 20.4 30.6

Manual Integrations
 APPROVED

Reviewed By :Yogesh Patel 06/24/2024
 Supervised By :Jagrut Upadhyay 06/24/2024

