

Data Path : Z:\HPCHEM1\BNA M\DATA\BM062316\
 Data File : BM005959.D
 Acq On : 24 Jun 2016 08:59
 Operator : UM/SJ
 Sample : H3639-10
 Misc :
 ALS Vial : 26 Sample Multiplier: 1

Instrument :
 BNA_M
 ClientSampleId :
 D9Z48

Quant Time: Jun 24 16:06:09 2016
 Quant Method : Z:\HPCHEM1\BNA M\METHODS\SOM02.2-EPA-BM062216.M
 Quant Title : SVOA CALIBRATION
 QLast Update : Fri Jun 24 00:58:22 2016
 Response via : Initial Calibration

Internal Standards	R.T.	QIon	Response	Conc	Units	Dev(Min)
1) 1,4-Dichlorobenzene-d4	7.66	152	343607	20.00	ng/ul	0.00
18) Naphthalene-d8	10.45	136	1679439	20.00	ng/ul	0.00
35) Acenaphthene-d10	14.31	164	1013816	20.00	ng/ul	0.00
61) Phenanthrene-d10	17.06	188	2191877	20.00	ng/ul	0.00
75) Chrysene-d12	21.25	240	2015735	20.00	ng/ul	0.00
83) Perylene-d12	23.47	264	2002542	20.00	ng/ul	0.00

System Monitoring Compounds

3) 1,4-Dioxane-d8	3.18	96	5712	0.66	ng/uL	0.00
5) Phenol-d5	6.83	99	252020	8.52	ng/ul	0.00
7) Bis-(2-Chloroethyl)ether-d	7.00	67	174490	9.64	ng/ul	0.00
9) 2-Chlorophenol-d4	7.19	132	195901	8.41	ng/ul	0.00
13) 4-Methylphenol-d8	8.36	113	222432	9.60	ng/ul	0.00
19) Nitrobenzene-d5	8.81	128	97118	7.86	ng/ul	0.00
22) 2-Nitrophenol-d4	9.53	143	104444	8.08	ng/ul	0.00
26) 2,4-Dichlorophenol-d3	10.06	165	209684	8.46	ng/ul	0.00
29) 4-Chloroaniline-d4	10.58	131	321609	11.86	ng/ul	0.00
43) Dimethylphthalate-d6	13.72	166	840568	10.44	ng/ul	0.00
46) Acenaphthylene-d8	14.00	160	945030	9.39	ng/ul	0.00
51) 4-Nitrophenol-d4	14.50	143	47702	3.03	ng/ul	0.00
57) Fluorene-d10	15.30	176	716135	10.29	ng/ul	0.00
62) 4,6-Dinitro-2-methylphenol	15.42	200	35284	3.23	ng/ul	-0.01
70) Anthracene-d10	17.15	188	1098709	11.00	ng/ul	0.00
76) Pyrene-d10	19.45	212	1139722	12.18	ng/ul	0.00
87) Benzo(a)pyrene-d12	23.33	264	1004083	11.13	ng/ul	0.00

Target Compounds

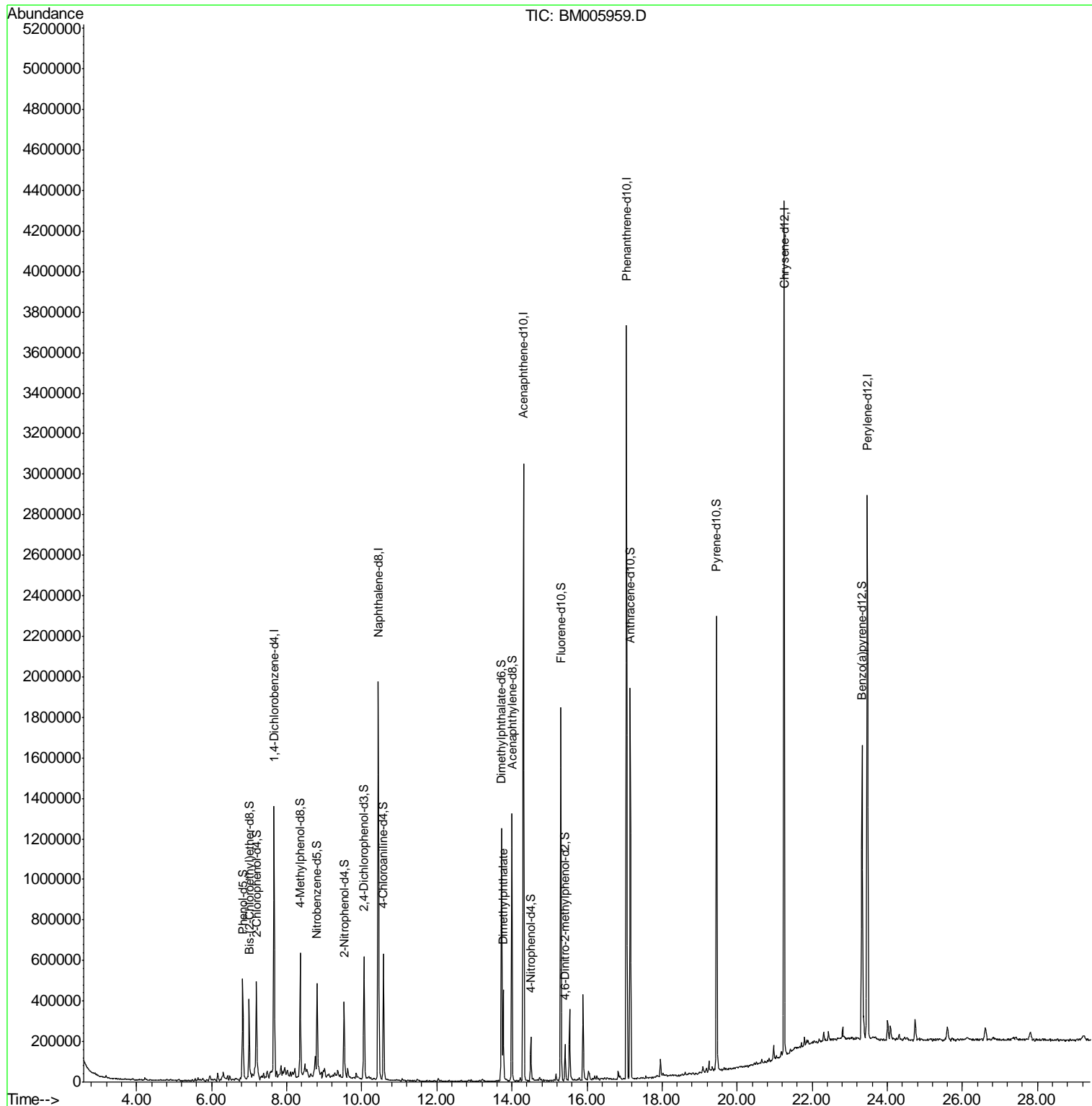
Target Compounds	R.T.	QIon	Response	Conc	Units	Ovalue
44) Dimethylphthalate	13.77	163	281291	3.46	ng/ul	100

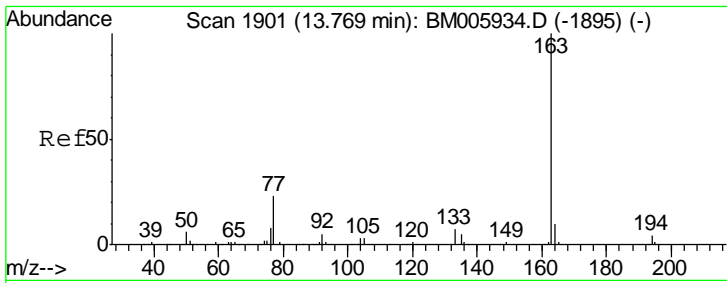
(#) = qualifier out of range (m) = manual integration (+) = signals summed

Data Path : Z:\HPCHEM1\BNA M\DATA\BM062316\
 Data File : BM005959.D
 Acq On : 24 Jun 2016 08:59
 Operator : UM/SJ
 Sample : H3639-10
 Misc :
 ALS Vial : 26 Sample Multiplier: 1

Instrument :
 BNA_M
 ClientSampled :
 D9Z48

Quant Time: Jun 24 16:06:09 2016
 Quant Method : Z:\HPCHEM1\BNA M\METHODS\SOM02.2-EPA-BM062216.M
 Quant Title : SVOA CALIBRATION
 QLast Update : Fri Jun 24 00:58:22 2016
 Response via : Initial Calibration





#44
 Dimethylphthalate
 Concen: 3.46 ng/ul
 RT: 13.77 min Scan# 1901
 Delta R.T. -0.00 min
 Lab File: BM005959.D
 Acq: 24 Jun 2016 08:59

Instrument :
 BNA_M
 ClientSampleID :
 D9Z48

Tot Ion:163 Resp: 281291

Ion	Ratio	Lower	Upper
163	100		
194	4.1	3.1	4.7
164	10.0	7.9	11.9

