

Data Path : Z:\SVOASRV\HPCHEM1\BNA M\DATA\BM062320\
 Data File : BM026508.D
 Acq On : 23 Jun 2020 20:15
 Operator : JU/CG
 Sample : L3027-10
 Misc :
 ALS Vial : 17 Sample Multiplier: 1

Instrument :
 BNA_M
 ClientSampleId :
 BG2L3

Quant Time: Jun 24 00:48:39 2020
 Quant Method : Z:\SVOASRV\HPCHEM1\BNA_M\METHODS\SOM-EPA-BM061220MA.M
 Quant Title : SVOA CALIBRATION
 QLast Update : Wed Jun 24 00:41:03 2020
 Response via : Initial Calibration

Internal Standards	R.T.	QIon	Response	Conc	Units	Dev(Min)
1) 1,4-Dichlorobenzene-d4	7.38	152	96336	20.00	ng/ul	0.00
18) Naphthalene-d8	10.14	136	440782	20.00	ng/ul	0.00
36) Acenaphthene-d10	14.04	164	302069	20.00	ng/ul	0.00
62) Phenanthrene-d10	16.79	188	702808	20.00	ng/ul	0.00
78) Chrysene-d12	21.00	240	750089	20.00	ng/ul	0.00
86) Perylene-d12	23.09	264	675611	20.00	ng/ul	0.00

System Monitoring Compounds

3) 1,4-Dioxane-d8	2.97	96	10646	3.88	ng/uL	0.00
5) Phenol-d5	6.59	99	190907	21.51	ng/ul	0.00
7) Bis-(2-Chloroethyl)ether-d	6.73	67	135711	24.17	ng/ul	0.00
9) 2-Chlorophenol-d4	6.92	132	146590	20.26	ng/ul	0.00
13) 4-Methylphenol-d8	8.10	113	161988	23.19	ng/ul	0.00
19) Nitrobenzene-d5	8.53	128	73708	18.82	ng/ul	0.00
22) 2-Nitrophenol-d4	9.24	143	80724	18.73	ng/ul	0.00
26) 2,4-Dichlorophenol-d3	9.78	165	151516	19.10	ng/ul	0.00
29) 4-Chloroaniline-d4	10.29	131	190467	23.02	ng/ul	0.00
44) Dimethylphthalate-d6	13.46	166	543937	21.42	ng/ul	0.00
47) Acenaphthylene-d8	13.72	160	571341	18.75	ng/ul	0.00
52) 4-Nitrophenol-d4	14.28	143	76940	18.27	ng/ul	0.00
58) Fluorene-d10	15.04	176	422351	19.38	ng/ul	0.00
63) 4,6-Dinitro-2-methylphenol	15.19	200	82765	17.99	ng/ul	0.00
71) Anthracene-d10	16.89	188	661802	18.50	ng/ul	0.00
79) Pyrene-d10	19.20	212	757962	18.43	ng/ul	0.00
90) Benzo(a)pyrene-d12	22.96	264	608890	16.30	ng/ul	0.00

Target Compounds

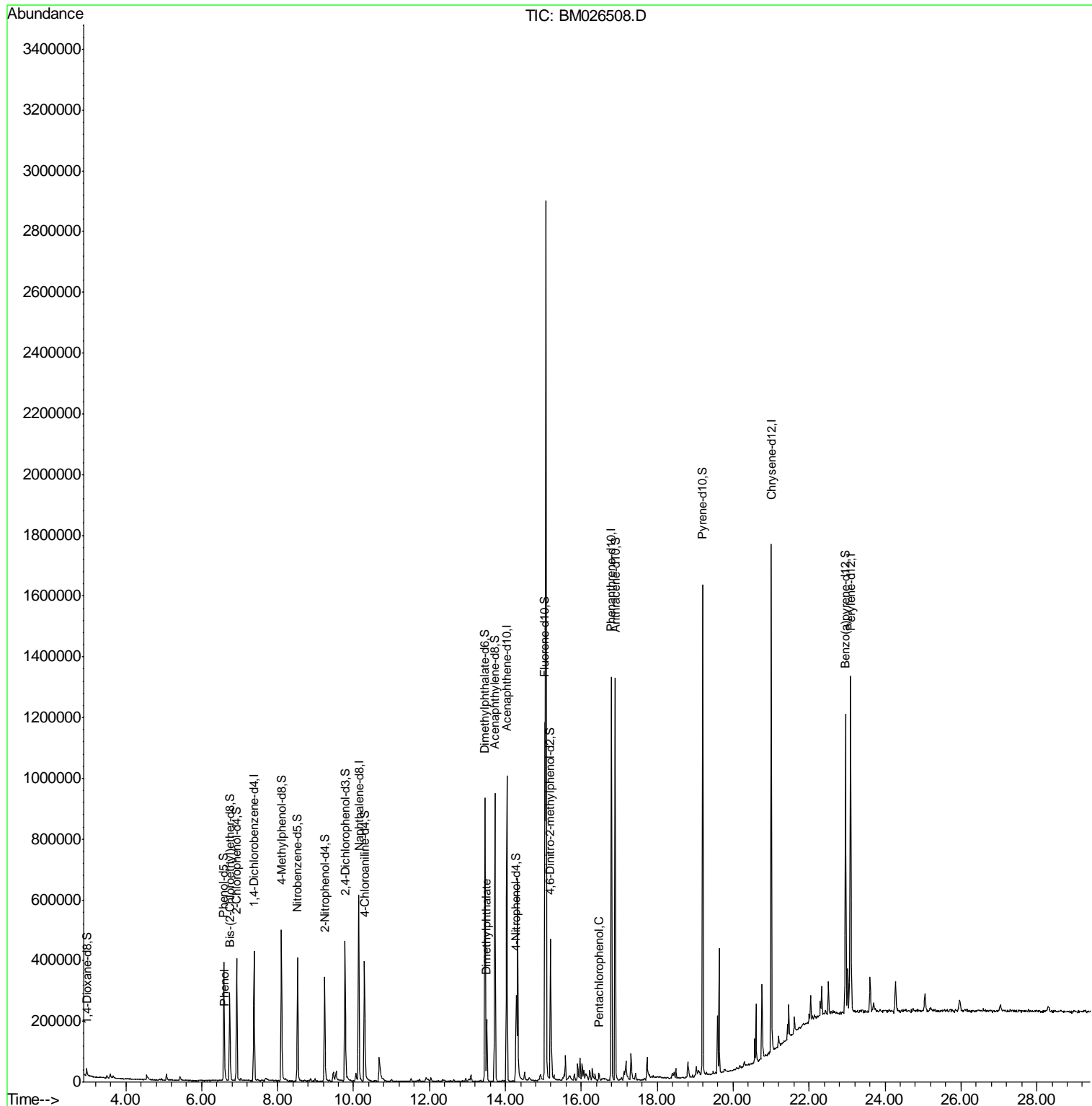
					Ovalue
6) Phenol	6.61	94	9940	1.023	ng/ul# 79
45) Dimethylphthalate	13.51	163	105249	3.990	ng/ul 100
69) Pentachlorophenol	16.46	266	4764	1.010	ng/ul# 84

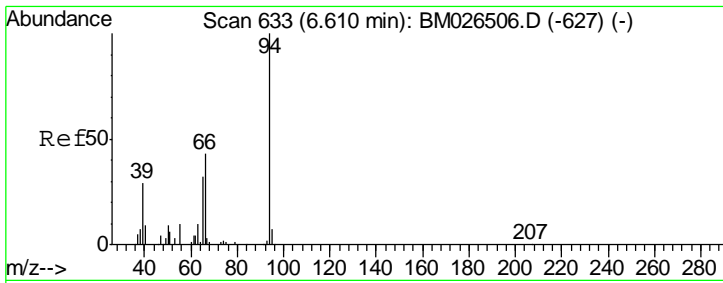
(#) = qualifier out of range (m) = manual integration (+) = signals summed

Data Path : Z:\SVOASRV\HPCHEM1\BNA M\DATA\BM062320\
 Data File : BM026508.D
 Acq On : 23 Jun 2020 20:15
 Operator : JU/CG
 Sample : L3027-10
 Misc :
 ALS Vial : 17 Sample Multiplier: 1

Instrument :
 BNA_M
 ClientSampleId :
 BG2L3

Quant Time: Jun 24 00:48:39 2020
 Quant Method : Z:\SVOASRV\HPCHEM1\BNA_M\METHODS\SOM-EPA-BM061220MA.M
 Quant Title : SVOA CALIBRATION
 QLast Update : Wed Jun 24 00:41:03 2020
 Response via : Initial Calibration

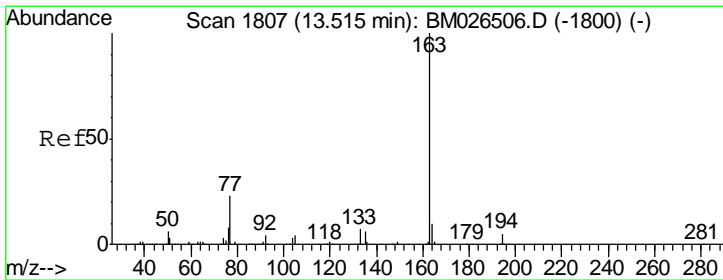
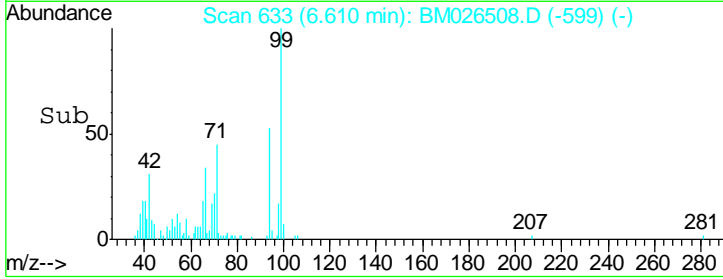
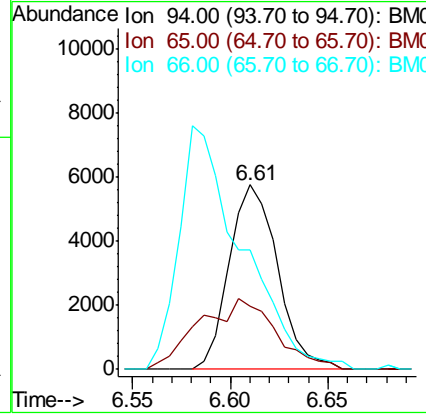
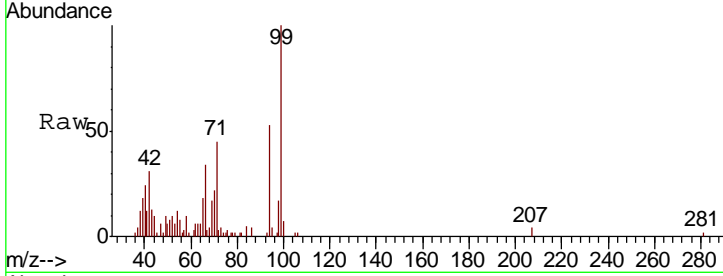




#6
 Phenol
 Concen: 1.023 ng/ul
 RT: 6.61 min Scan# 633
 Delta R.T. -0.00 min
 Lab File: BM026508.D
 Acq: 23 Jun 2020 20:15

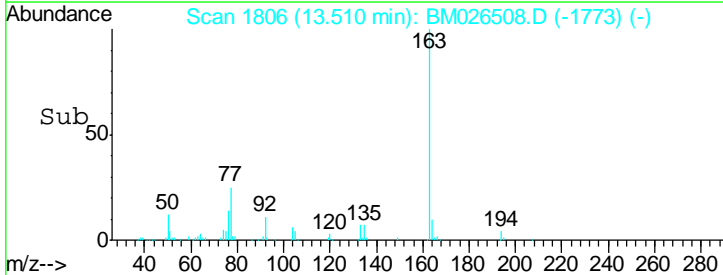
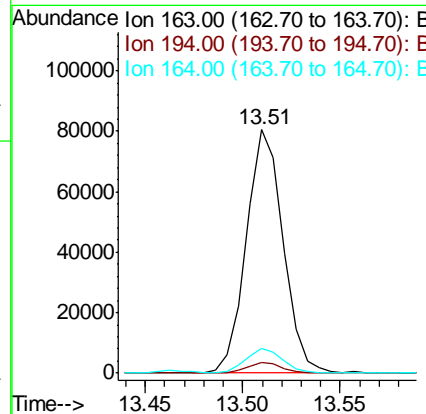
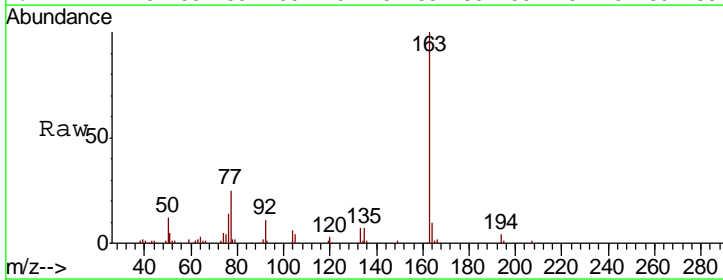
Instrument :
 BNA_M
 ClientSampled :
 BG2L3

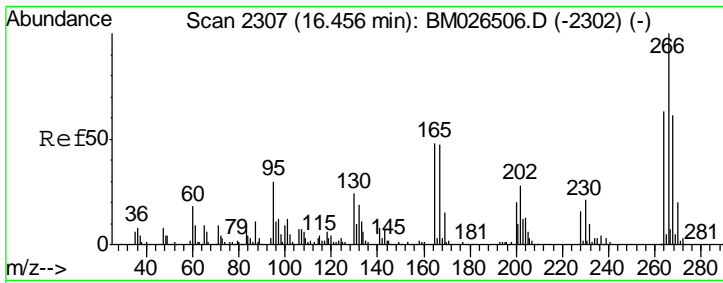
Tgt Ion	Resp	Lower	Upper
94	100		
65	34.3	25.5	38.3
66	64.9	34.8	52.2#



#45
 Dimethylphthalate
 Concen: 3.990 ng/ul
 RT: 13.51 min Scan# 1806
 Delta R.T. -0.01 min
 Lab File: BM026508.D
 Acq: 23 Jun 2020 20:15

Tgt Ion	Resp	Lower	Upper
163	100		
194	4.4	3.4	5.2
164	9.9	7.8	11.6





#69
 Pentachlorophenol
 Concen: 1.010 ng/ul
 RT: 16.46 min Scan# 2308
 Delta R.T. 0.01 min
 Lab File: BM026508.D
 Acq: 23 Jun 2020 20:15

Instrument :
 BNA_M
ClientSampled :
 BG2L3

Tot Ion: 266 Resp: 4764

Ion	Ratio	Lower	Upper
266	100		
264	44.6	49.4	74.0
268	72.5	51.8	77.8

