

Data Path : Z:\SVOASRV\HPCHEM1\BNA M\DATA\BM062320\
 Data File : BM026505.D
 Acq On : 23 Jun 2020 17:49
 Operator : JU/CG
 Sample : L3027-08
 Misc :
 ALS Vial : 15 Sample Multiplier: 1

Instrument :
 BNA_M
 ClientSampled :
 BG2L1

Integration Parameters: LSCINT.P

Integrator: RTE
 Smoothing : OFF
 Sampling : 1
 Start Thrs: 0.2
 Stop Thrs : 0

Filtering: 5
 Min Area: 0.1 % of largest Peak
 Max Peaks: 100
 Peak Location: TOP

If leading or trailing edge < 100 prefer < Baseline drop else tangent >
 Peak separation: 5

Method : Z:\SVOASRV\HPCHEM1\BNA_M\METHODS\SOM-EPA-BM061220MA.M
 Title : SVOA CALIBRATION

Signal : TIC: BM026508.D

peak #	R.T. min	first scan	max scan	last scan	PK TY	peak height	corr. area	corr. % max.	% of total
1	2.969	11	14	22	rVB2	17339	25510	1.09%	0.075%
2	3.504	102	105	111	rVB6	8821	12366	0.53%	0.037%
3	3.581	114	118	122	rVB3	7532	12839	0.55%	0.038%
4	3.669	129	133	137	rVB3	6402	9320	0.40%	0.028%
5	4.563	280	285	291	rVB2	11074	17453	0.75%	0.052%
6	6.587	622	629	641	rBV	286897	493703	21.15%	1.458%
7	6.739	649	655	665	rBV	213353	344538	14.76%	1.018%
8	6.922	680	686	701	rBV	305963	474097	20.31%	1.400%
9	7.381	757	764	776	rBV	415428	637352	27.31%	1.883%
10	8.104	881	887	901	rBV	372408	598989	25.66%	1.769%
11	8.210	901	905	911	rVB4	6296	10070	0.43%	0.030%
12	8.528	952	959	972	rBV	311964	499182	21.39%	1.474%
13	9.239	1074	1080	1091	rBV	252366	412006	17.65%	1.217%
14	9.533	1125	1130	1141	rBV2	16803	38332	1.64%	0.113%
15	9.780	1164	1172	1180	rBV	346366	610142	26.14%	1.802%
16	10.139	1225	1233	1242	rBV	611475	973363	41.70%	2.875%
17	10.292	1252	1259	1272	rBV	308461	582874	24.97%	1.722%
18	10.674	1317	1324	1337	rBV	298803	626425	26.84%	1.850%
19	12.345	1603	1608	1612	rBV4	11850	22897	0.98%	0.068%
20	12.957	1705	1712	1716	rBV2	9954	15655	0.67%	0.046%
21	13.463	1792	1798	1803	rBV	749299	1050392	45.00%	3.103%
22	13.510	1803	1806	1817	rVB	158254	223814	9.59%	0.661%
23	13.721	1836	1842	1855	rBV	728238	1051451	45.05%	3.106%
24	14.039	1889	1896	1906	rBV	989305	1391940	59.64%	4.111%
25	14.280	1932	1937	1962	rBV	209241	498638	21.36%	1.473%
26	14.515	1970	1977	1988	rBV	116305	178166	7.63%	0.526%
27	15.039	2057	2066	2069	rVV	885401	1287191	55.15%	3.802%
28	15.068	2069	2071	2081	rVV	405733	498552	21.36%	1.473%
29	15.186	2085	2091	2104	rVV	340792	501064	21.47%	1.480%
30	15.286	2104	2108	2112	rVV3	10502	17027	0.73%	0.050%
31	15.515	2143	2147	2150	rBV	19828	27583	1.18%	0.081%
32	15.545	2150	2152	2155	rVB3	9094	9350	0.40%	0.028%
33	15.586	2155	2159	2165	rVB	19427	27226	1.17%	0.080%
34	15.709	2176	2180	2183	rBV	12406	15431	0.66%	0.046%

Data Path : Z:\SVOASRV\HPCHEM1\BNA M\DATA\BM062320\
 Data File : BM026505.D
 Acq On : 23 Jun 2020 17:49
 Operator : JU/CG
 Sample : L3027-08
 Misc :
 ALS Vial : 15 Sample Multiplier: 1

Instrument :
 BNA_M
 ClientSampleId :
 BG2L1

Integration Parameters: LSCINT.P

Integrator: RTE
 Smoothing : OFF Filtering: 5
 Sampling : 1 Min Area: 0.1 % of largest Peak
 Start Thrs: 0.2 Max Peaks: 100
 Stop Thrs : 0 Peak Location: TOP

If leading or trailing edge < 100 prefer < Baseline drop else tangent >
 Peak separation: 5

Method : Z:\SVOASRV\HPCHEM1\BNA_M\METHODS\SOM-EPA-BM061220MA.M
 Title : SVOA CALIBRATION

35	15.768	2183	2190	2194	rBV	33181	53681	2.30%	0.159%
36	15.815	2194	2198	2207	rVB	171911	227784	9.76%	0.673%
37	15.904	2207	2213	2217	rBV	391824	524164	22.46%	1.548%
38	15.968	2219	2224	2229	rVB3	447840	766846	32.86%	2.265%
39	16.027	2229	2234	2238	rBV3	398513	573075	24.55%	1.693%
40	16.068	2238	2241	2246	rVB	261759	326736	14.00%	0.965%
41	16.127	2246	2251	2252	rBV	131616	170657	7.31%	0.504%
42	16.174	2257	2259	2262	rVV	106910	109788	4.70%	0.324%
43	16.221	2262	2267	2275	rVV3	267806	531221	22.76%	1.569%
44	16.292	2275	2279	2283	rVV	401429	559782	23.98%	1.653%
45	16.333	2283	2286	2289	rVV2	150623	247357	10.60%	0.731%
46	16.362	2289	2291	2298	rVB	252914	321921	13.79%	0.951%
47	16.421	2298	2301	2305	rVB6	7620	10281	0.44%	0.030%
48	16.509	2312	2316	2319	rBV	14169	18061	0.77%	0.053%
49	16.574	2324	2327	2330	rBV3	8510	10859	0.47%	0.032%
50	16.627	2332	2336	2341	rVB3	15553	22281	0.95%	0.066%
51	16.704	2346	2349	2352	rVV2	13794	18733	0.80%	0.055%
52	16.739	2352	2355	2358	rVV	7937	10185	0.44%	0.030%
53	16.798	2358	2365	2374	rVB	1300319	1824429	78.17%	5.389%
54	16.892	2374	2381	2397	rVB	1068324	1447970	62.04%	4.277%
55	17.127	2416	2421	2425	rVV2	22020	25892	1.11%	0.076%
56	17.174	2425	2429	2435	rVV2	46428	63739	2.73%	0.188%
57	17.509	2475	2486	2490	rBV9	7689	19762	0.85%	0.058%
58	17.733	2519	2524	2532	rBV3	120594	203999	8.74%	0.603%
59	17.833	2538	2541	2546	rBV2	13479	22479	0.96%	0.066%
60	17.886	2546	2550	2554	rBV4	22560	41159	1.76%	0.122%
61	17.968	2560	2564	2568	rVB3	16627	24220	1.04%	0.072%
62	18.021	2569	2573	2576	rBV6	7566	11508	0.49%	0.034%
63	18.062	2576	2580	2583	rBV2	14685	17359	0.74%	0.051%
64	18.092	2583	2585	2589	rVB3	12482	15514	0.66%	0.046%
65	18.139	2589	2593	2597	rVB3	14123	19157	0.82%	0.057%
66	18.186	2597	2601	2604	rBV	16594	26674	1.14%	0.079%
67	18.256	2609	2613	2621	rVB3	21474	41090	1.76%	0.121%
68	18.427	2638	2642	2649	rVV2	61854	87099	3.73%	0.257%
69	18.492	2650	2653	2658	rVB4	14624	20453	0.88%	0.060%
70	18.550	2660	2663	2669	rVB8	9042	12987	0.56%	0.038%
71	18.833	2707	2711	2715	rVB2	16934	21585	0.92%	0.064%

Data Path : Z:\SVOASRV\HPCHEM1\BNA M\DATA\BM062320\
 Data File : BM026505.D
 Acq On : 23 Jun 2020 17:49
 Operator : JU/CG
 Sample : L3027-08
 Misc :
 ALS Vial : 15 Sample Multiplier: 1

Instrument :
 BNA_M
 ClientSampleId :
 BG2L1

Integration Parameters: LSCINT.P

Integrator: RTE
 Smoothing : OFF Filtering: 5
 Sampling : 1 Min Area: 0.1 % of largest Peak
 Start Thrs: 0.2 Max Peaks: 100
 Stop Thrs : 0 Peak Location: TOP

If leading or trailing edge < 100 prefer < Baseline drop else tangent >
 Peak separation: 5

Method : Z:\SVOASRV\HPCHEM1\BNA_M\METHODS\SOM-EPA-BM061220MA.M
 Title : SVOA CALIBRATION

72	18.933	2724	2728	2734	rVB3	33702	48249	2.07%	0.143%
73	19.033	2740	2745	2750	rBV	96658	151368	6.49%	0.447%
74	19.086	2751	2754	2757	rVB3	15836	24204	1.04%	0.071%
75	19.197	2767	2773	2781	rBV	1299958	1775489	76.07%	5.244%
76	19.592	2835	2840	2843	rBV	168661	190947	8.18%	0.564%
77	19.627	2843	2846	2852	rVB	346639	371389	15.91%	1.097%
78	19.768	2867	2870	2872	rBV3	11943	14474	0.62%	0.043%
79	19.797	2872	2875	2879	rVB4	25438	30310	1.30%	0.090%
80	20.174	2936	2939	2945	rVB6	11202	15270	0.65%	0.045%
81	20.297	2957	2960	2963	rBV	55677	56675	2.43%	0.167%
82	20.568	3003	3006	3009	rBV	123888	138261	5.92%	0.408%
83	20.603	3009	3012	3018	rVB	290875	294071	12.60%	0.869%
84	20.762	3035	3039	3049	rBV	382741	553740	23.72%	1.636%
85	21.009	3076	3081	3088	rBV	1879974	2334007	100.00%	6.894%
86	21.074	3089	3092	3098	rVB3	64464	75496	3.23%	0.223%
87	21.203	3110	3114	3117	rBV	133518	151141	6.48%	0.446%
88	21.433	3151	3153	3156	rBV2	92063	100938	4.32%	0.298%
89	21.462	3156	3158	3163	rVB	198951	206958	8.87%	0.611%
90	21.615	3181	3184	3193	rBV	166793	213436	9.14%	0.630%
91	22.009	3249	3251	3254	rBV3	47151	43539	1.87%	0.129%
92	22.050	3254	3258	3262	rVB	182160	219580	9.41%	0.649%
93	22.303	3298	3301	3303	rBV	80601	91178	3.91%	0.269%
94	22.333	3303	3306	3313	rVB	195360	242392	10.39%	0.716%
95	22.515	3333	3337	3342	rBV	212118	263746	11.30%	0.779%
96	22.968	3408	3414	3420	rBV	877888	1452984	62.25%	4.292%
97	23.033	3421	3425	3429	rVV	217085	313944	13.45%	0.927%
98	23.097	3430	3436	3447	rVB	1340104	2259736	96.82%	6.675%
99	23.615	3520	3524	3531	rVB	187571	307522	13.18%	0.908%
100	24.279	3634	3637	3644	rVB	142406	268910	11.52%	0.794%

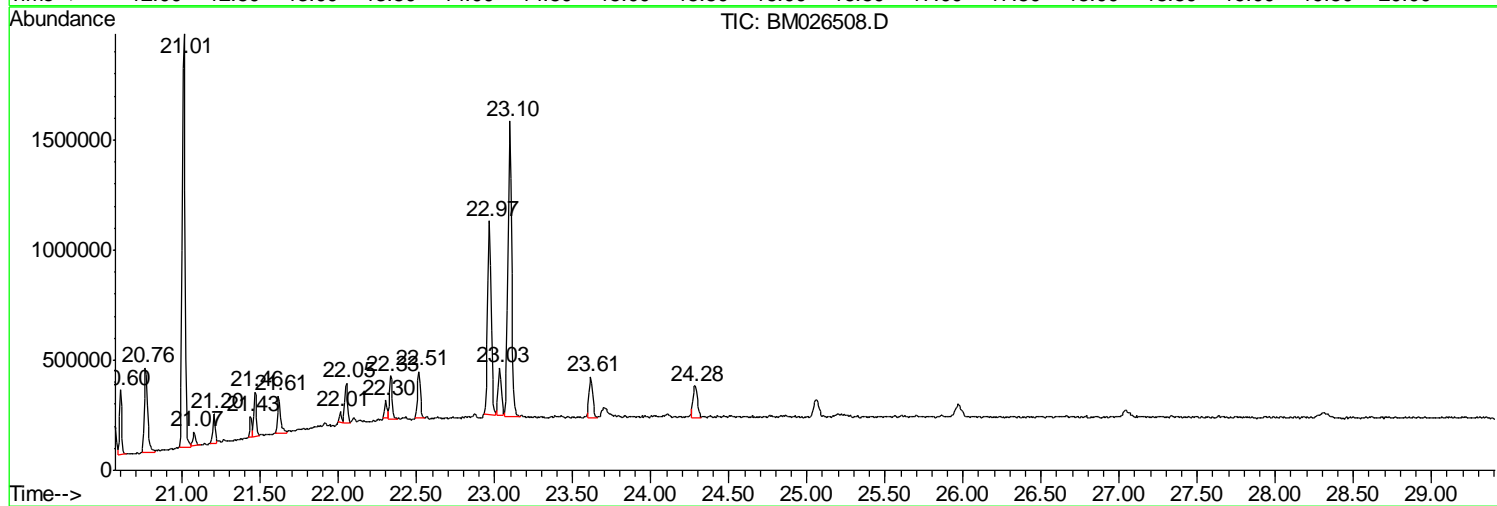
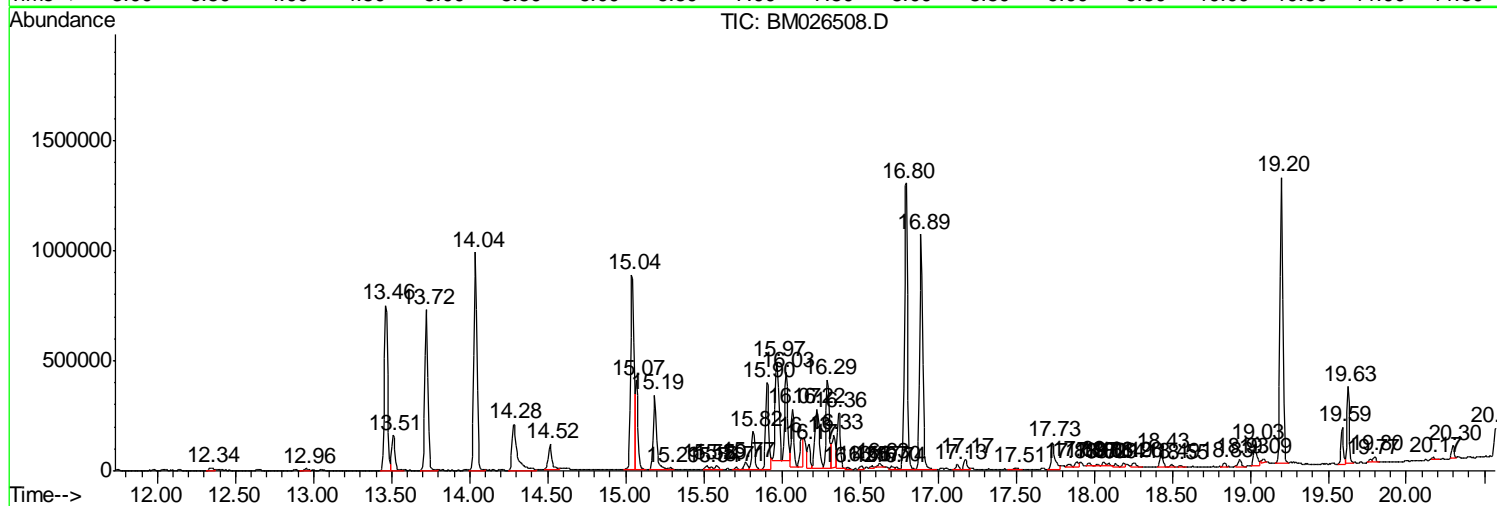
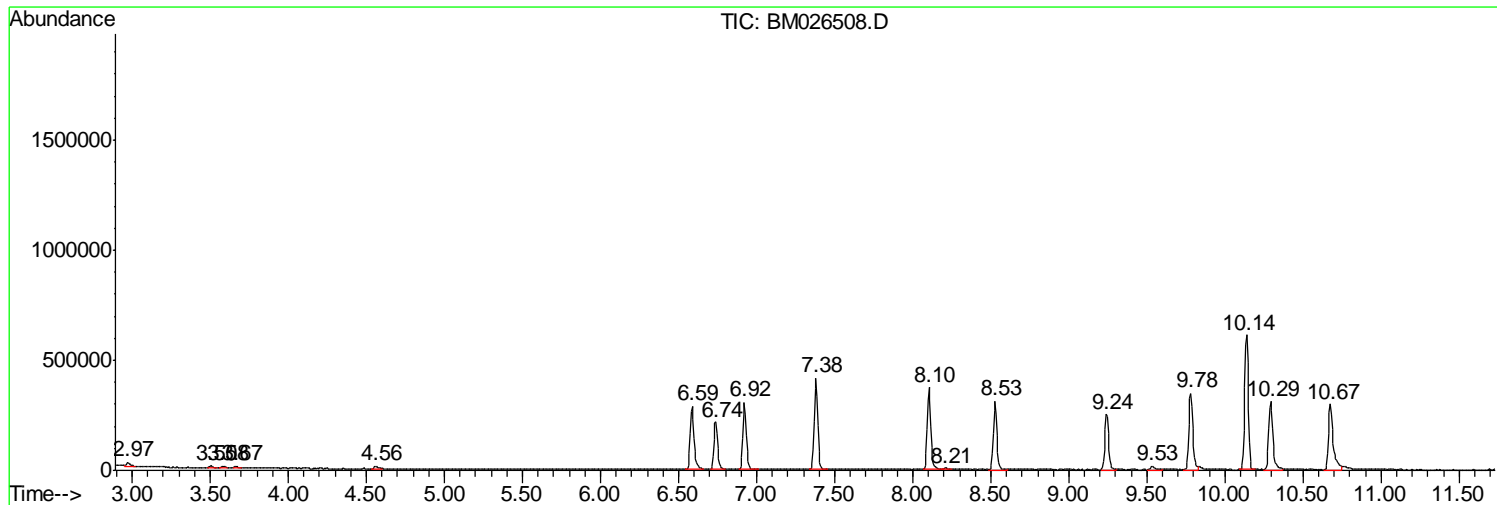
Sum of corrected areas: 33855379

Data Path : Z:\SVOASRV\HPCHEM1\BNA M\DATA\BM062320\
 Data File : BM026505.D
 Acq On : 23 Jun 2020 17:49
 Operator : JU/CG
 Sample : L3027-08
 Misc :
 ALS Vial : 15 Sample Multiplier: 1

Instrument :
 BNA_M
 ClientSampleId :
 BG2L1

Quant Method : Z:\SVOASRV\HPCHEM1\BNA_M\METHODS\SOM-EPA-BM061220MA.M
 Quant Title : SVOA CALIBRATION

TIC Library : C:\DATABASE\NIST11.L
 TIC Integration Parameters: LSCINT.P



Data Path : Z:\SVOASRV\HPCHEM1\BNA M\DATA\BM062320\
 Data File : BM026505.D
 Acq On : 23 Jun 2020 17:49
 Operator : JU/CG
 Sample : L3027-08
 Misc :
 ALS Vial : 15 Sample Multiplier: 1

Instrument :
 BNA_M
 ClientSampled :
 BG2L1

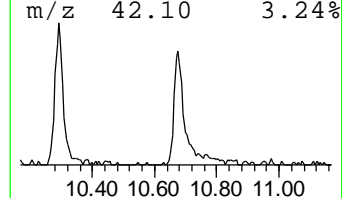
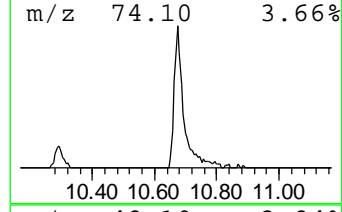
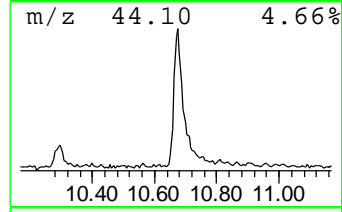
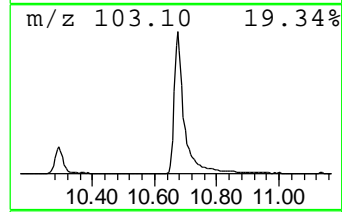
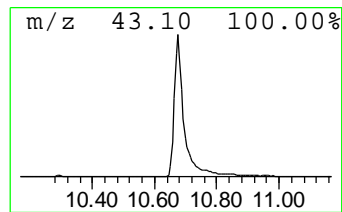
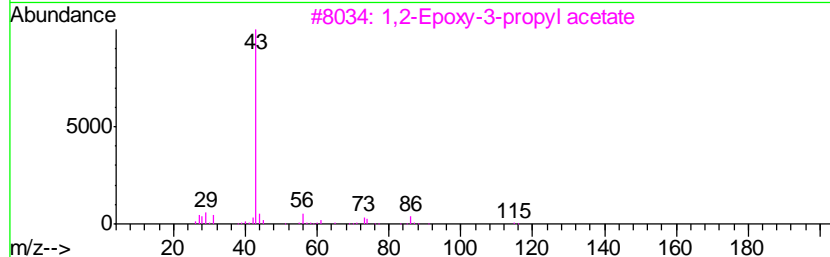
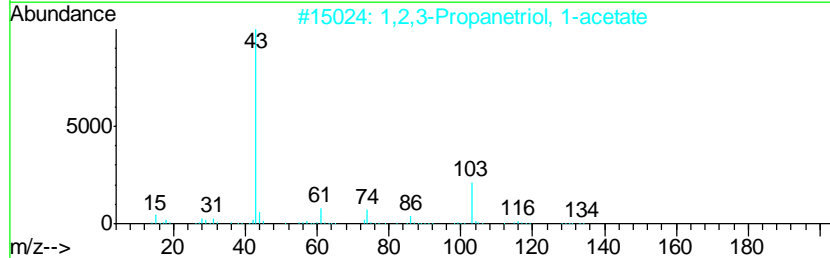
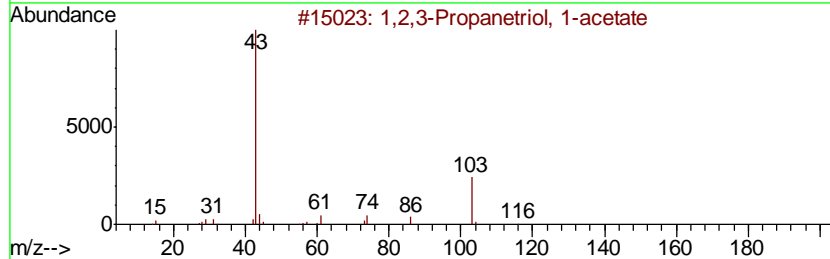
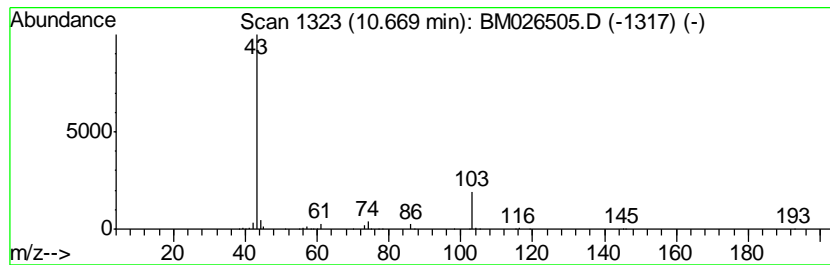
Quant Method : Z:\SVOASRV\HPCHEM1\BNA_M\METHODS\SOM-EPA-BM061220MA.M
 Quant Title : SVOA CALIBRATION

TIC Library : C:\DATABASE\NIST11.L
 TIC Integration Parameters: LSCINT.P

 Peak Number 1 1,2,3-Propanetriol, 1-acetate Concentration Rank 1

R.T.	EstConc	Area	Relative to ISTD	R.T.
10.67	12.87 ng/ul	626425	Naphthalene-d8	10.14

Hit#	of	Tentative ID	MW	MolForm	CAS#	Qual
1	5	1,2,3-Propanetriol, 1-acetate	134	C5H10O4	000106-61-6	53
2		1,2,3-Propanetriol, 1-acetate	134	C5H10O4	000106-61-6	28
3		1,2-Epoxy-3-propyl acetate	116	C5H8O3	006387-89-9	9
4		Ketone, methyl 2-methyl-1,3-oxot...	146	C6H10O2S	033266-06-7	7
5		2-Hydroxyimino-3-oxo-butanoic ac...	145	C5H7NO4	073708-95-9	7



Data Path : Z:\SVOASRV\HPCHEM1\BNA M\DATA\BM062320\
 Data File : BM026505.D
 Acq On : 23 Jun 2020 17:49
 Operator : JU/CG
 Sample : L3027-08
 Misc :
 ALS Vial : 15 Sample Multiplier: 1

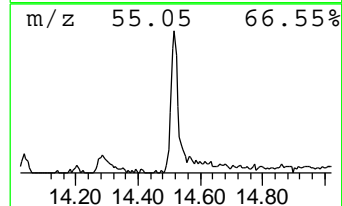
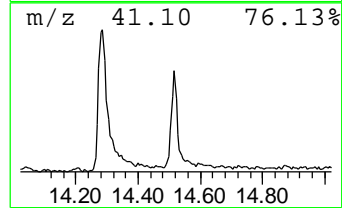
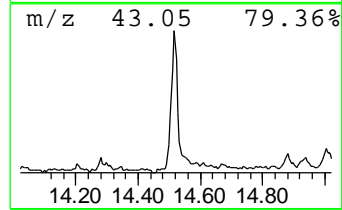
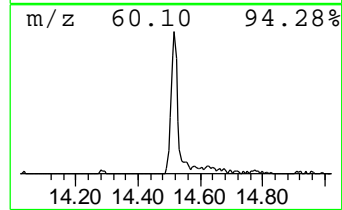
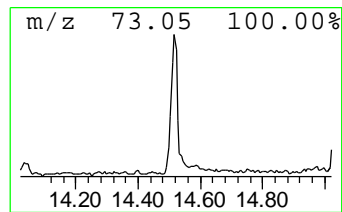
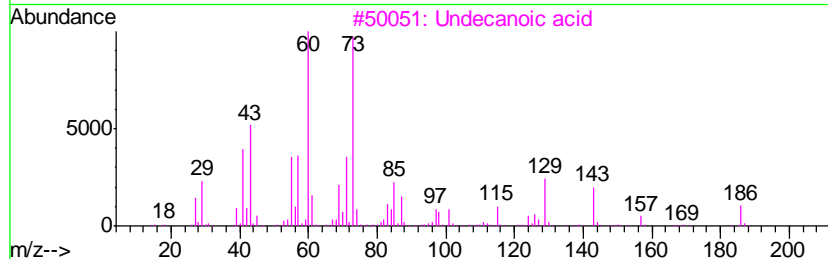
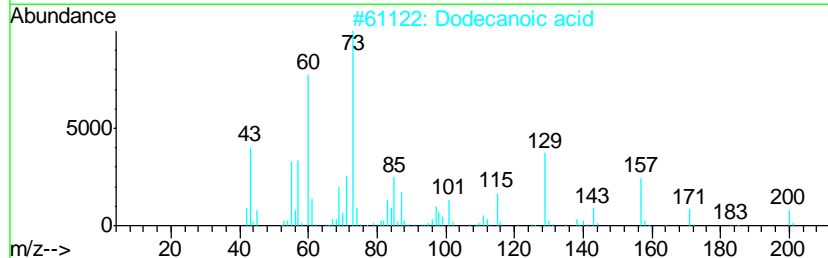
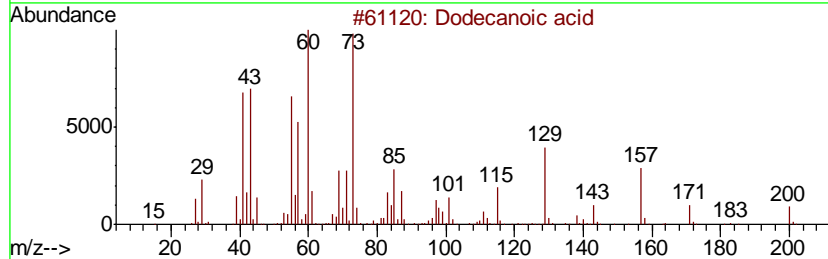
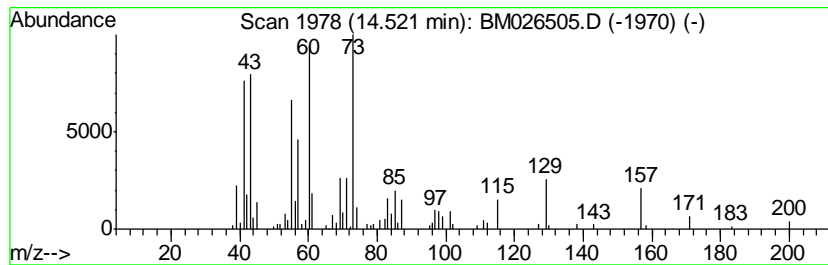
Instrument :
 BNA_M
 ClientSampled :
 BG2L1

Quant Method : Z:\SVOASRV\HPCHEM1\BNA_M\METHODS\SOM-EPA-BM061220MA.M
 Quant Title : SVOA CALIBRATION

TIC Library : C:\DATABASE\NIST11.L
 TIC Integration Parameters: LSCINT.P

 Peak Number 2 Dodecanoic acid Concentration Rank 14

R.T.	EstConc	Area	Relative to ISTD	R.T.
14.52	2.56 ng/ul	178166	Acenaphthene-d10	14.04
Hit# of	5	Tentative ID	MW MolForm	CAS# Qual
1		Dodecanoic acid	200 C12H24O2	000143-07-7 90
2		Dodecanoic acid	200 C12H24O2	000143-07-7 90
3		Undecanoic acid	186 C11H22O2	000112-37-8 72
4		Undecanoic acid	186 C11H22O2	000112-37-8 64
5		Nonanoic acid	158 C9H18O2	000112-05-0 62



Data Path : Z:\SVOASRV\HPCHEM1\BNA M\DATA\BM062320\
 Data File : BM026505.D
 Acq On : 23 Jun 2020 17:49
 Operator : JU/CG
 Sample : L3027-08
 Misc :
 ALS Vial : 15 Sample Multiplier: 1

Instrument :
 BNA_M
 ClientSampleID :
 BG2L1

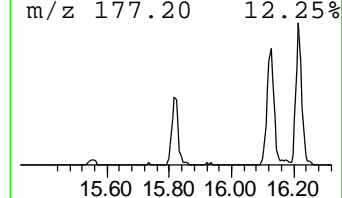
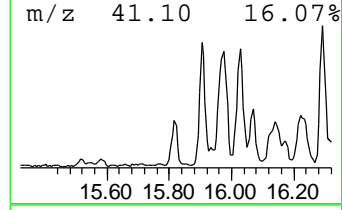
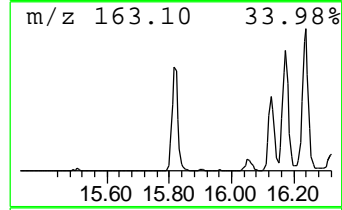
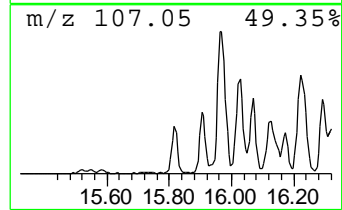
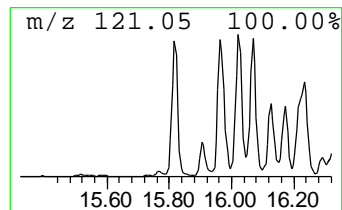
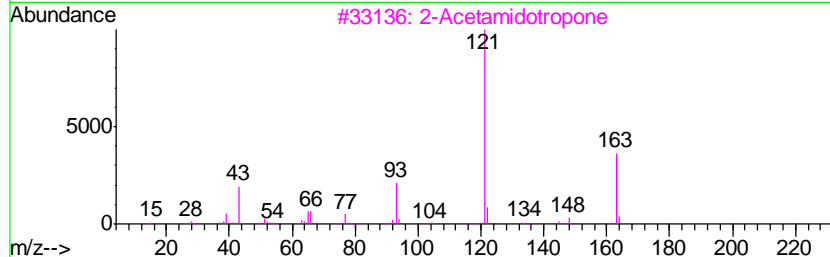
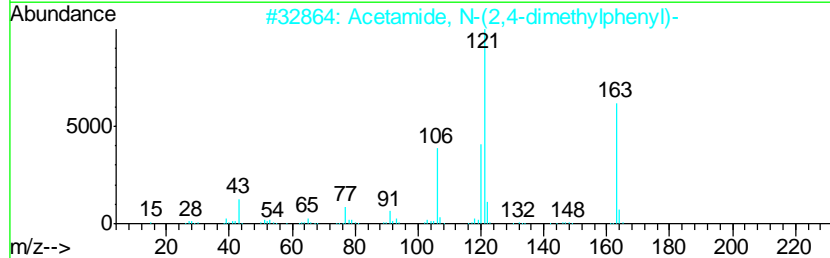
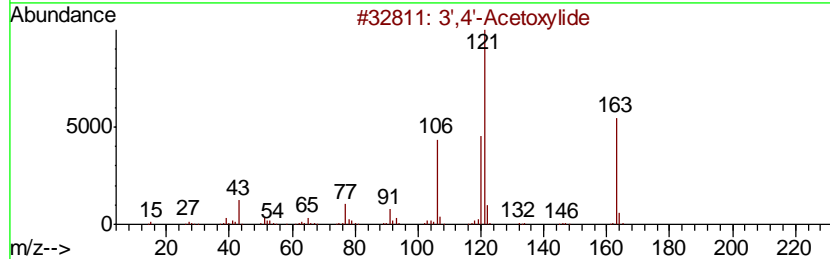
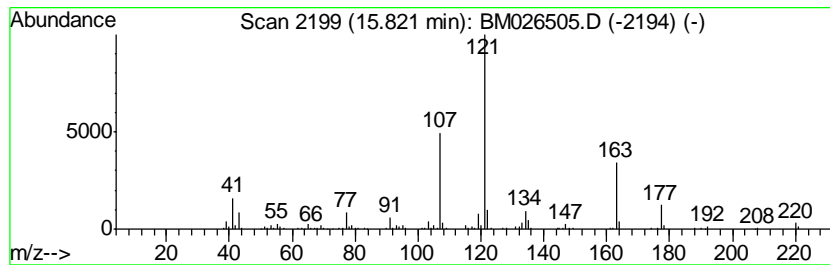
Quant Method : Z:\SVOASRV\HPCHEM1\BNA_M\METHODS\SOM-EPA-BM061220MA.M
 Quant Title : SVOA CALIBRATION

TIC Library : C:\DATABASE\NIST11.L
 TIC Integration Parameters: LSCINT.P

 Peak Number 3 unknown-01 Concentration Rank 16

R.T.	EstConc	Area	Relative to ISTD	R.T.
15.82	2.50 ng/ul	227784	Phenanthrene-d10	16.80

Hit#	of	Tentative ID	MW	MolForm	CAS#	Qual
1	5	3',4'-Acetoxylide	163	C10H13NO	002198-54-1	49
2		Acetamide, N-(2,4-dimethylphenyl)-	163	C10H13NO	002050-43-3	49
3		2-Acetamidotropone	163	C9H9NO2	006422-12-4	43
4		4-(4-Methoxyphenyl)-1-butanol	180	C11H16O2	052244-70-9	43
5		p-Sec-butylphenyl acetate	192	C12H16O2	003245-24-7	43



Data Path : Z:\SVOASRV\HPCHEM1\BNA M\DATA\BM062320\
 Data File : BM026505.D
 Acq On : 23 Jun 2020 17:49
 Operator : JU/CG
 Sample : L3027-08
 Misc :
 ALS Vial : 15 Sample Multiplier: 1

Instrument :
 BNA_M
 ClientSampled :
 BG2L1

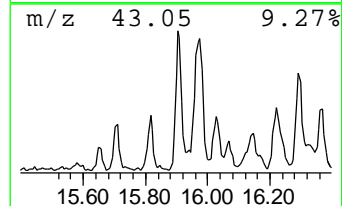
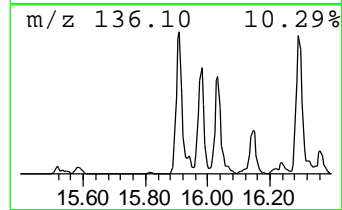
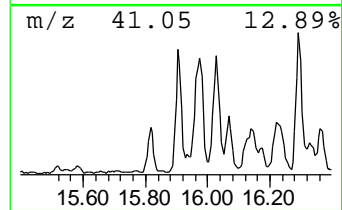
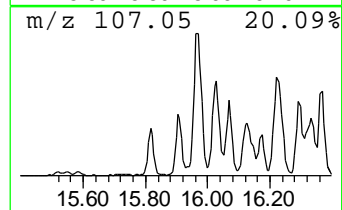
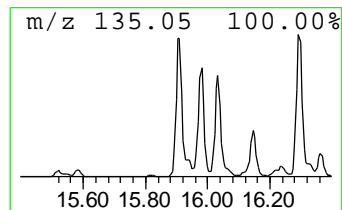
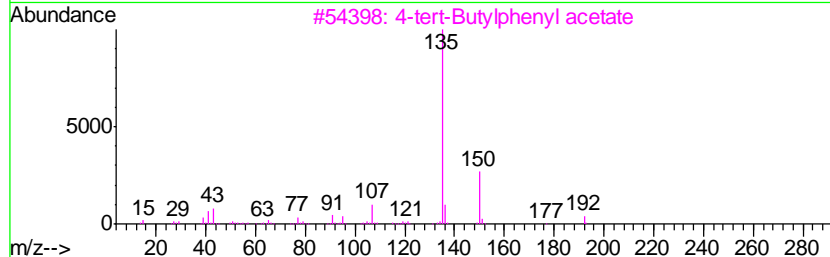
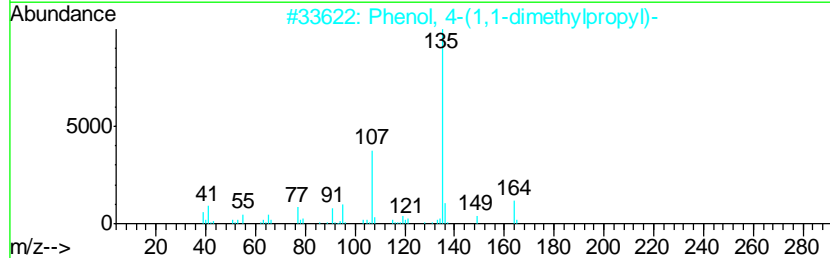
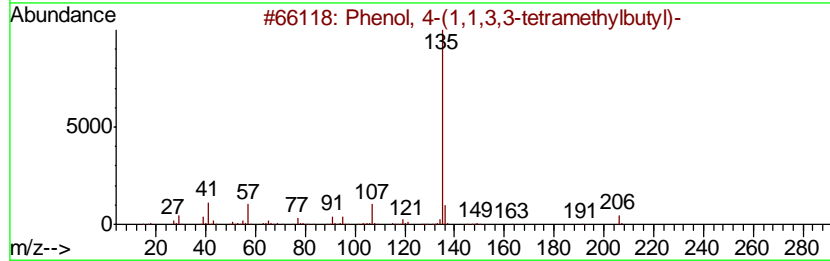
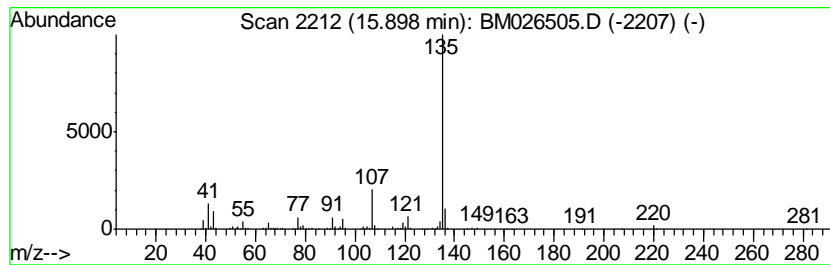
Quant Method : Z:\SVOASRV\HPCHEM1\BNA_M\METHODS\SOM-EPA-BM061220MA.M
 Quant Title : SVOA CALIBRATION

TIC Library : C:\DATABASE\NIST11.L
 TIC Integration Parameters: LSCINT.P

 Peak Number 4 Phenol, 4-(1,1,3,3-tetramet... Concentration Rank 6

R.T.	EstConc	Area	Relative to ISTD	R.T.
15.90	5.75 ng/ul	524164	Phenanthrene-d10	16.80

Hit#	of	Tentative ID	MW	MolForm	CAS#	Qual
1	5	Phenol, 4-(1,1,3,3-tetramethylbu...	206	C14H22O	000140-66-9	78
2		Phenol, 4-(1,1-dimethylpropyl)-	164	C11H16O	000080-46-6	78
3		4-tert-Butylphenyl acetate	192	C12H16O2	003056-64-2	72
4		Phenol, m-tert-butyl-	150	C10H14O	000585-34-2	64
5		Phenol, 4-(1,1,3,3-tetramethylbu...	206	C14H22O	000140-66-9	64



Data Path : Z:\SVOASRV\HPCHEM1\BNA M\DATA\BM062320\
 Data File : BM026505.D
 Acq On : 23 Jun 2020 17:49
 Operator : JU/CG
 Sample : L3027-08
 Misc :
 ALS Vial : 15 Sample Multiplier: 1

Instrument :
 BNA_M
 ClientSampled :
 BG2L1

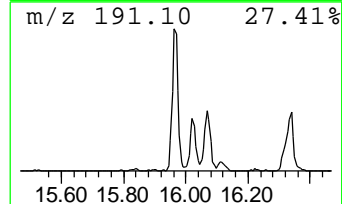
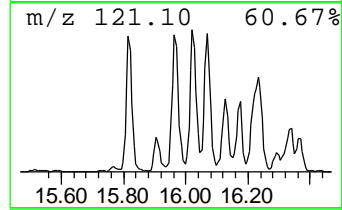
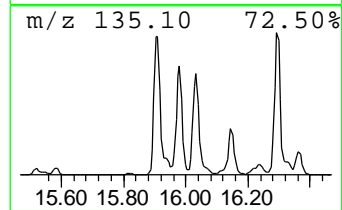
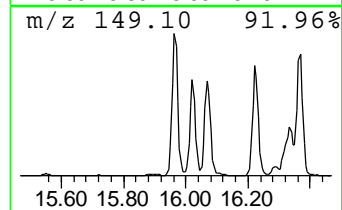
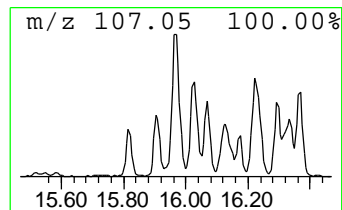
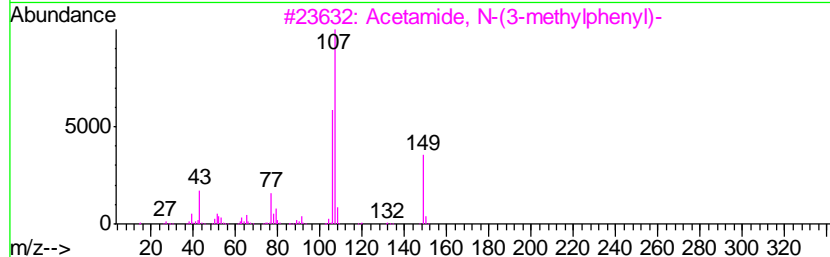
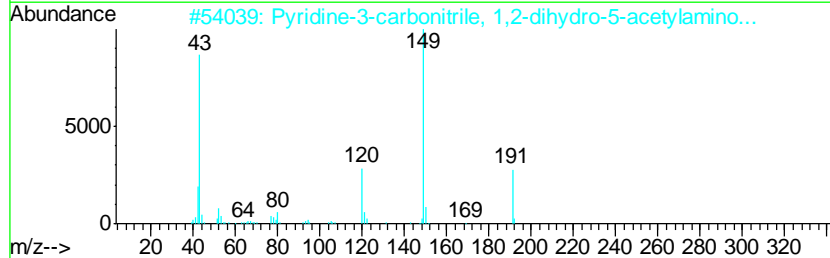
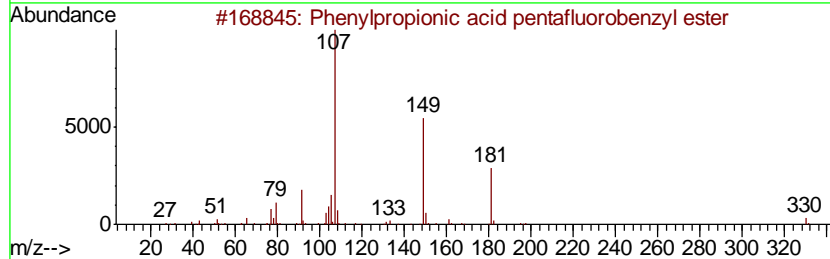
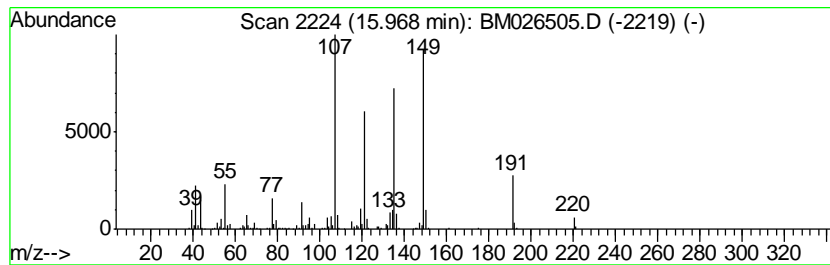
Quant Method : Z:\SVOASRV\HPCHEM1\BNA_M\METHODS\SOM-EPA-BM061220MA.M
 Quant Title : SVOA CALIBRATION

TIC Library : C:\DATABASE\NIST11.L
 TIC Integration Parameters: LSCINT.P

 Peak Number 5 unknown-02 Concentration Rank 2

R.T.	EstConc	Area	Relative to ISTD	R.T.
15.97	8.41 ng/ul	766846	Phenanthrene-d10	16.80

Hit#	of	Tentative ID	MW	MolForm	CAS#	Qual
1	5	Phenylpropionic acid pentafluoro...	330	C16H11F5O2	062434-95-1	47
2		Pyridine-3-carbonitrile, 1,2-dih...	191	C9H9N3O2	220098-92-0	38
3		Acetamide, N-(3-methylphenyl)-	149	C9H11NO	000537-92-8	35
4		Pyridine, pentamethyl-	149	C10H15N	003748-83-2	30
5		Phthalic acid, di(4-trifluoromet...	514	C24H16F6O6	1000377-69-8	27



Data Path : Z:\SVOASRV\HPCHEM1\BNA M\DATA\BM062320\
 Data File : BM026505.D
 Acq On : 23 Jun 2020 17:49
 Operator : JU/CG
 Sample : L3027-08
 Misc :
 ALS Vial : 15 Sample Multiplier: 1

Instrument :
 BNA_M
 ClientSampled :
 BG2L1

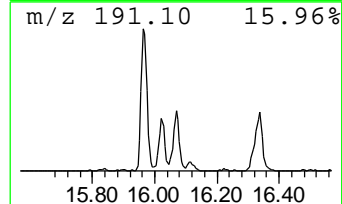
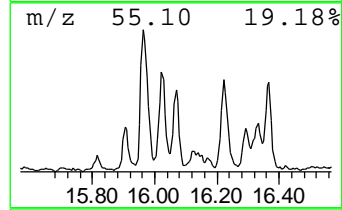
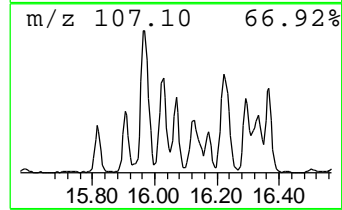
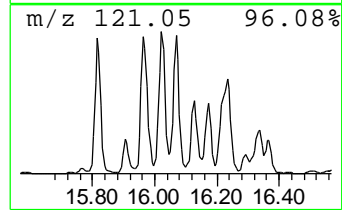
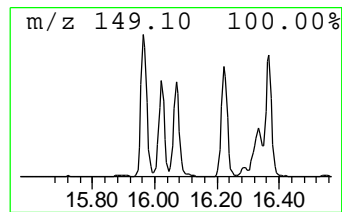
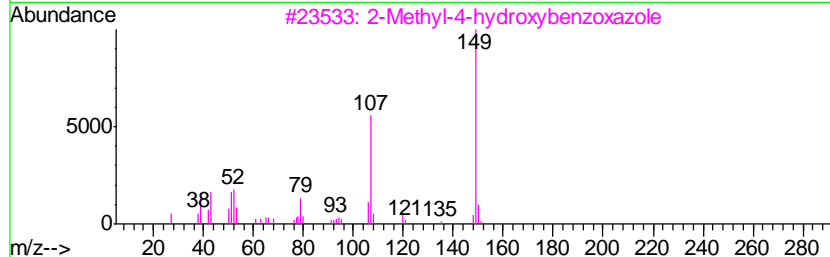
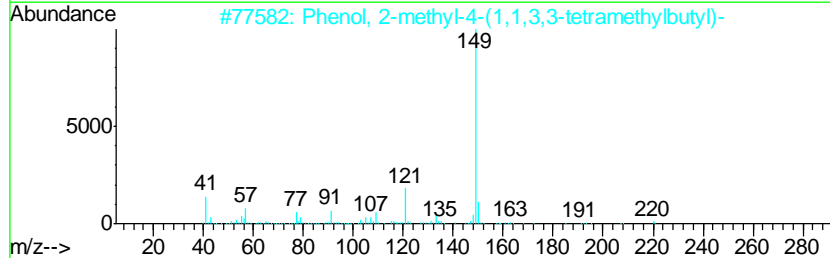
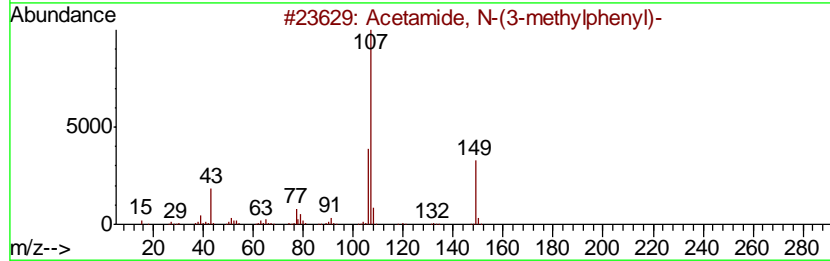
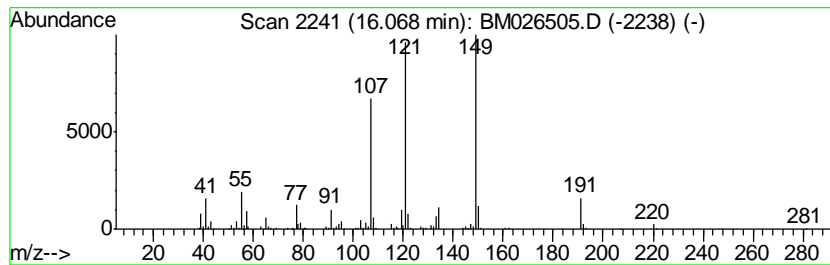
Quant Method : Z:\SVOASRV\HPCHEM1\BNA_M\METHODS\SOM-EPA-BM061220MA.M
 Quant Title : SVOA CALIBRATION

TIC Library : C:\DATABASE\NIST11.L
 TIC Integration Parameters: LSCINT.P

 Peak Number 7 unknown-03 Concentration Rank 8

R.T.	EstConc	Area	Relative to ISTD	R.T.
16.07	3.58 ng/ul	326736	Phenanthrene-d10	16.80

Hit#	of	Tentative ID	MW	MolForm	CAS#	Qual
1	5	Acetamide, N-(3-methylphenyl)-	149	C9H11NO	000537-92-8	38
2		Phenol, 2-methyl-4-(1,1,3,3-tetr...	220	C15H24O	002219-84-3	38
3		2-Methyl-4-hydroxybenzoxazole	149	C8H7NO2	051110-60-2	38
4		Acetamide, N-(3-methylphenyl)-	149	C9H11NO	000537-92-8	38
5		Acetamide, N-(3-methylphenyl)-	149	C9H11NO	000537-92-8	30



Data Path : Z:\SVOASRV\HPCHEM1\BNA M\DATA\BM062320\
 Data File : BM026505.D
 Acq On : 23 Jun 2020 17:49
 Operator : JU/CG
 Sample : L3027-08
 Misc :
 ALS Vial : 15 Sample Multiplier: 1

Instrument :
 BNA_M
 ClientSampleId :
 BG2L1

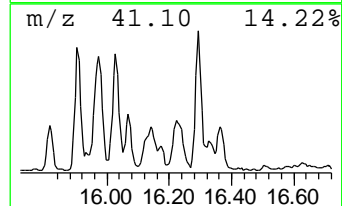
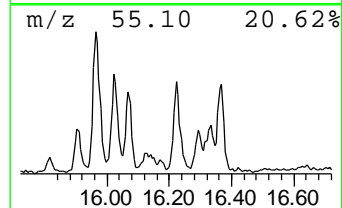
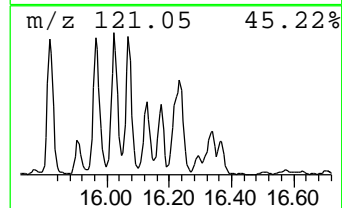
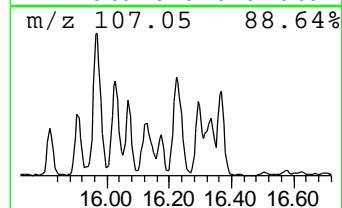
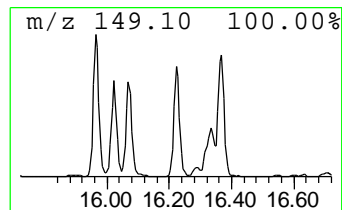
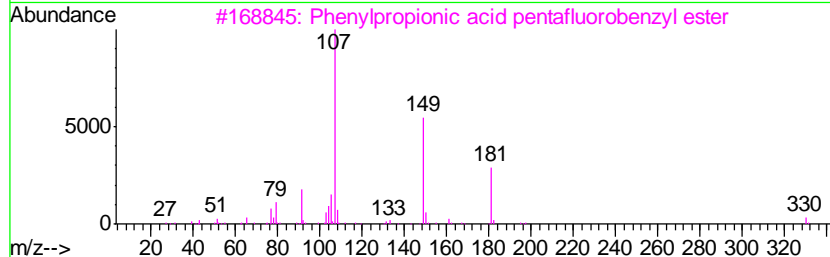
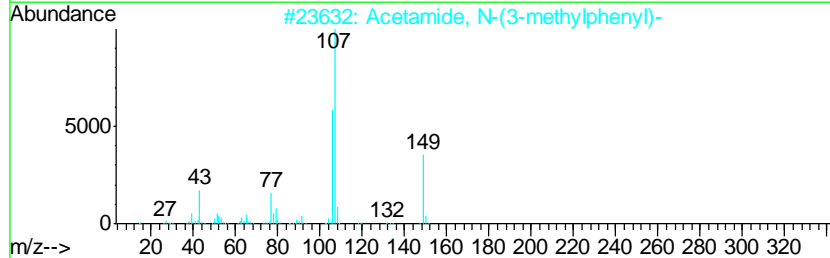
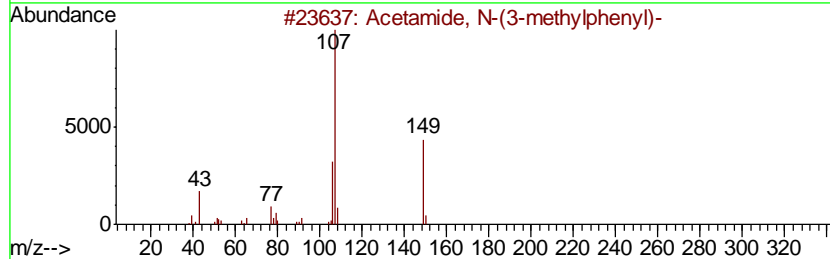
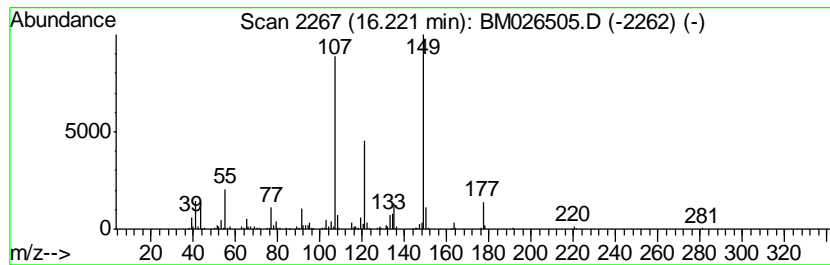
Quant Method : Z:\SVOASRV\HPCHEM1\BNA_M\METHODS\SOM-EPA-BM061220MA.M
 Quant Title : SVOA CALIBRATION

TIC Library : C:\DATABASE\NIST11.L
 TIC Integration Parameters: LSCINT.P

 Peak Number 8 Acetamide, N-(3-methylphenyl)- Concentration Rank 5

R.T.	EstConc	Area	Relative to ISTD	R.T.
16.22	5.82 ng/ul	531221	Phenanthrene-d10	16.80

Hit#	of	Tentative ID	MW	MolForm	CAS#	Qual
1	5	Acetamide, N-(3-methylphenyl)-	149	C9H11NO	000537-92-8	59
2		Acetamide, N-(3-methylphenyl)-	149	C9H11NO	000537-92-8	49
3		Phenylpropionic acid pentafluoro...	330	C16H11F5O2	062434-95-1	47
4		Acetamide, N-(3-methylphenyl)-	149	C9H11NO	000537-92-8	47
5		Phenol, 4-(2-methylpropyl)-	150	C10H14O	004167-74-2	38



Data Path : Z:\SVOASRV\HPCHEM1\BNA M\DATA\BM062320\
 Data File : BM026505.D
 Acq On : 23 Jun 2020 17:49
 Operator : JU/CG
 Sample : L3027-08
 Misc :
 ALS Vial : 15 Sample Multiplier: 1

Instrument :
 BNA_M
 ClientSampled :
 BG2L1

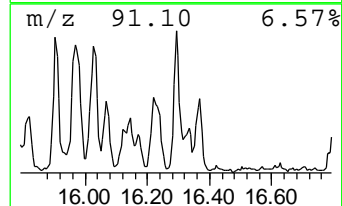
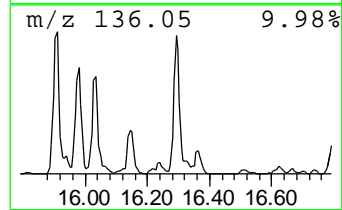
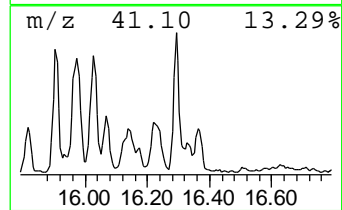
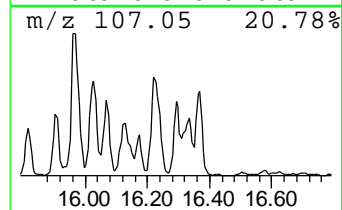
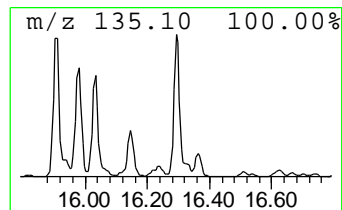
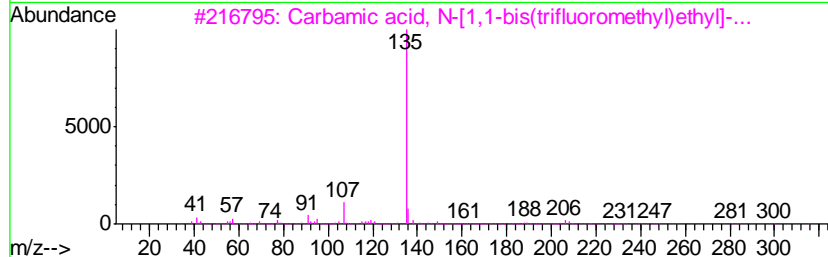
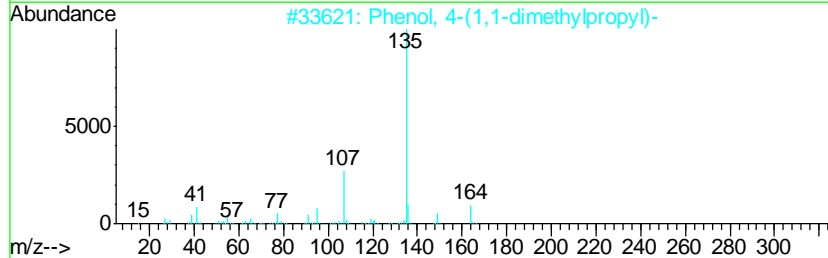
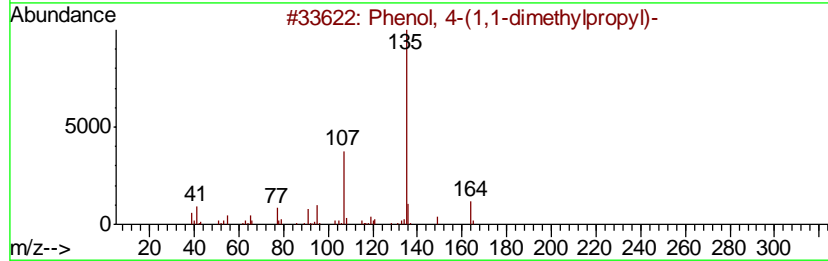
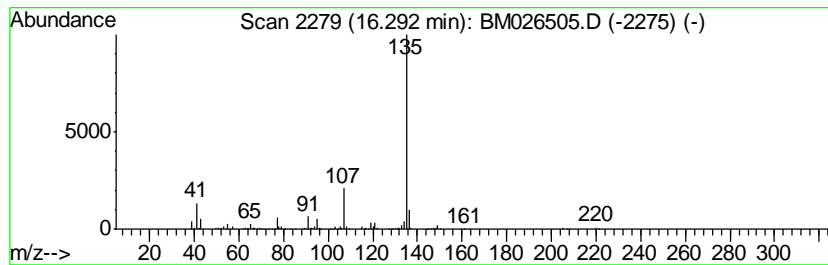
Quant Method : Z:\SVOASRV\HPCHEM1\BNA_M\METHODS\SOM-EPA-BM061220MA.M
 Quant Title : SVOA CALIBRATION

TIC Library : C:\DATABASE\NIST11.L
 TIC Integration Parameters: LSCINT.P

 Peak Number 9 Phenol, 4-(1,1-dimethylprop... Concentration Rank 4

R.T.	EstConc	Area	Relative to ISTD	R.T.
16.29	6.14 ng/ul	559782	Phenanthrene-d10	16.80

Hit#	of	Tentative ID	MW	MolForm	CAS#	Qual
1	5	Phenol, 4-(1,1-dimethylpropyl)-	164	C11H16O	000080-46-6	83
2		Phenol, 4-(1,1-dimethylpropyl)-	164	C11H16O	000080-46-6	78
3		Carbamic acid, N-[1,1-bis(triflu...	413	C19H25F6NO2	296242-69-8	72
4		Hexestrol	270	C18H22O2	005635-50-7	72
5		Hexestrol, O-trifluoroacetyl-	366	C20H21F3O3	1000365-31-7	72



Data Path : Z:\SVOASRV\HPCHEM1\BNA M\DATA\BM062320\
 Data File : BM026505.D
 Acq On : 23 Jun 2020 17:49
 Operator : JU/CG
 Sample : L3027-08
 Misc :
 ALS Vial : 15 Sample Multiplier: 1

Instrument :
 BNA_M
 ClientSampled :
 BG2L1

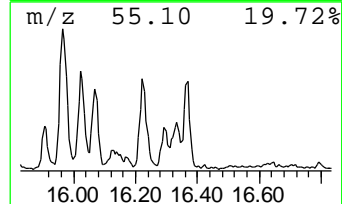
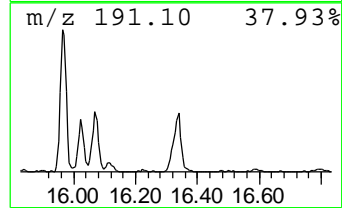
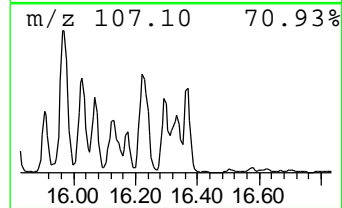
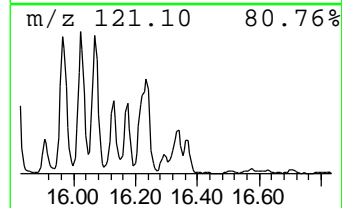
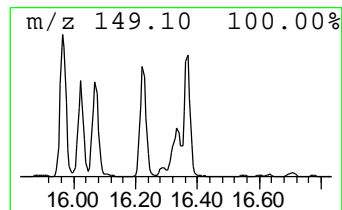
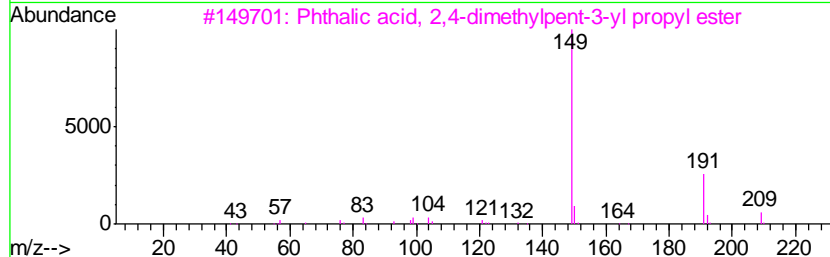
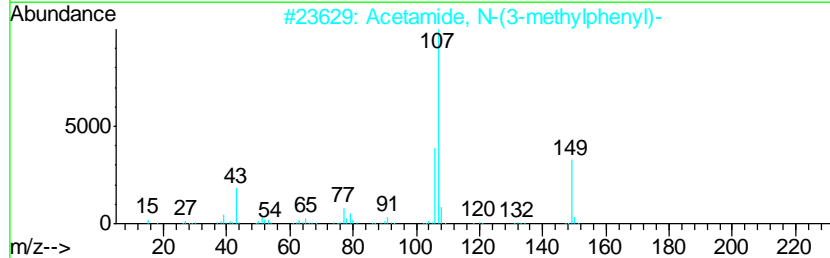
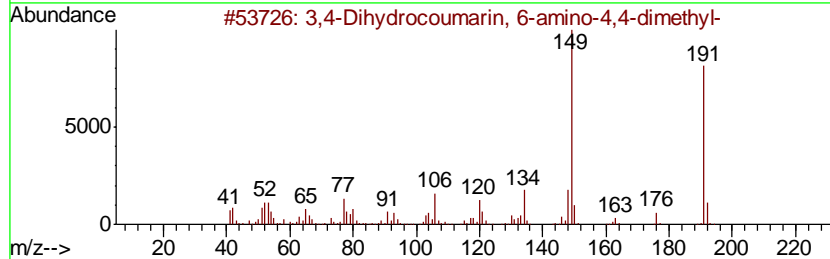
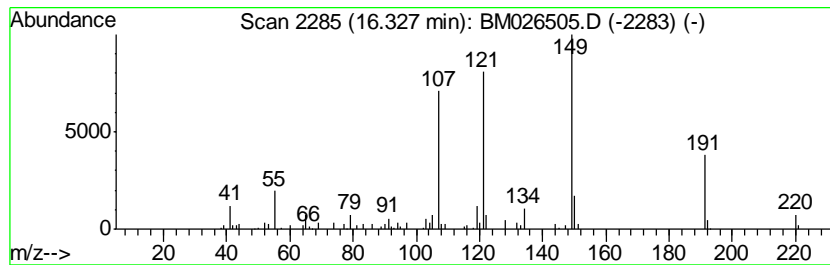
Quant Method : Z:\SVOASRV\HPCHEM1\BNA_M\METHODS\SOM-EPA-BM061220MA.M
 Quant Title : SVOA CALIBRATION

TIC Library : C:\DATABASE\NIST11.L
 TIC Integration Parameters: LSCINT.P

 Peak Number 10 3,4-Dihydrocoumarin, 6-amin... Concentration Rank 13

R.T.	EstConc	Area	Relative to ISTD	R.T.
16.33	2.71 ng/ul	247357	Phenanthrene-d10	16.80

Hit#	of	Tentative ID	MW	MolForm	CAS#	Qual
1	5	3,4-Dihydrocoumarin, 6-amino-4,4...	191	C11H13NO2	1000128-49-9	53
2		Acetamide, N-(3-methylphenyl)-	149	C9H11NO	000537-92-8	50
3		Phthalic acid, 2,4-dimethylpent-...	306	C18H26O4	1000356-84-2	47
4		Phenol, 2-(1,1-dimethylethyl)-4-...	164	C11H16O	002409-55-4	47
5		Pyridine-3-carbonitrile, 1,2-dih...	191	C9H9N3O2	220098-92-0	47



Data Path : Z:\SVOASRV\HPCHEM1\BNA M\DATA\BM062320\
 Data File : BM026505.D
 Acq On : 23 Jun 2020 17:49
 Operator : JU/CG
 Sample : L3027-08
 Misc :
 ALS Vial : 15 Sample Multiplier: 1

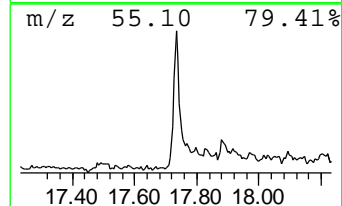
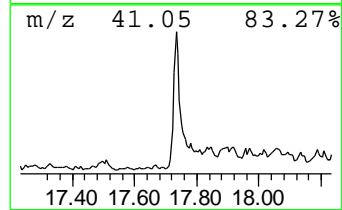
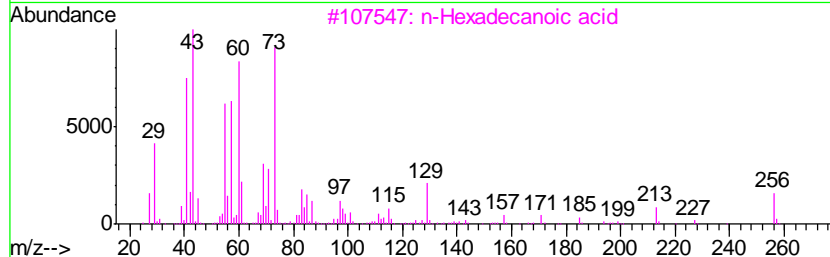
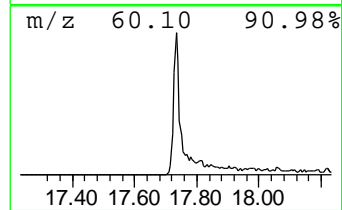
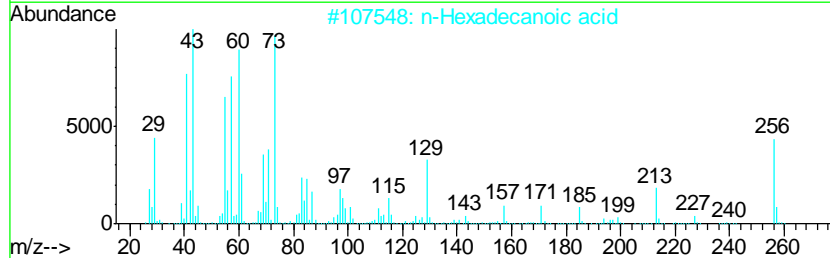
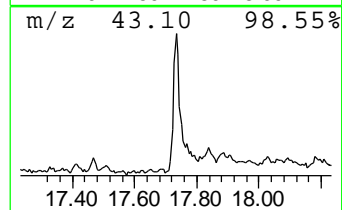
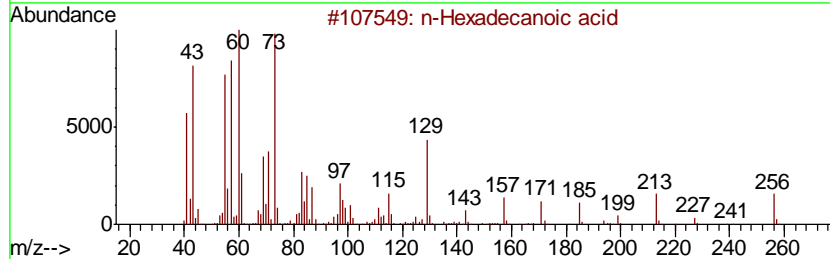
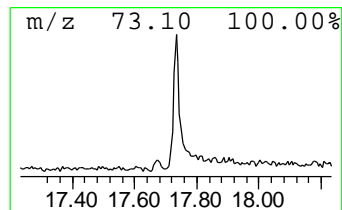
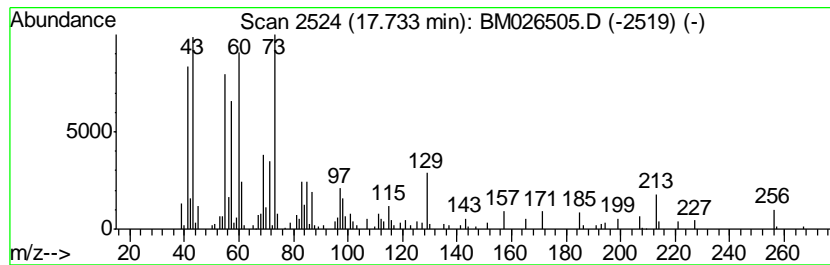
Instrument :
 BNA_M
 ClientSampleID :
 BG2L1

Quant Method : Z:\SVOASRV\HPCHEM1\BNA_M\METHODS\SOM-EPA-BM061220MA.M
 Quant Title : SVOA CALIBRATION

TIC Library : C:\DATABASE\NIST11.L
 TIC Integration Parameters: LSCINT.P

 Peak Number 12 n-Hexadecanoic acid Concentration Rank 19

R.T.	EstConc	Area	Relative to ISTD	R.T.		
17.73	2.24 ng/ul	203999	Phenanthrene-d10	16.80		
Hit# of	5	Tentative ID	MW	MolForm	CAS#	Qual
1		n-Hexadecanoic acid	256	C16H32O2	000057-10-3	99
2		n-Hexadecanoic acid	256	C16H32O2	000057-10-3	97
3		n-Hexadecanoic acid	256	C16H32O2	000057-10-3	93
4		Tridecanoic acid	214	C13H26O2	000638-53-9	90
5		Pentadecanoic acid	242	C15H30O2	001002-84-2	83



Data Path : Z:\SVOASRV\HPCHEM1\BNA M\DATA\BM062320\
 Data File : BM026505.D
 Acq On : 23 Jun 2020 17:49
 Operator : JU/CG
 Sample : L3027-08
 Misc :
 ALS Vial : 15 Sample Multiplier: 1

Instrument :
 BNA_M
 ClientSampleID :
 BG2L1

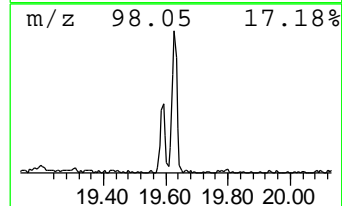
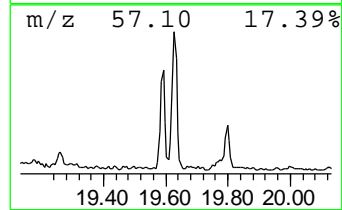
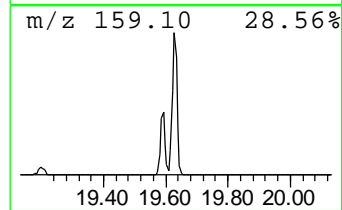
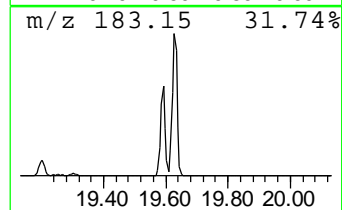
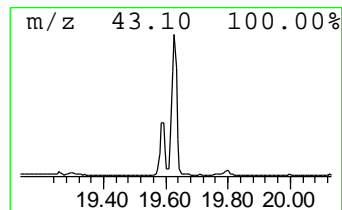
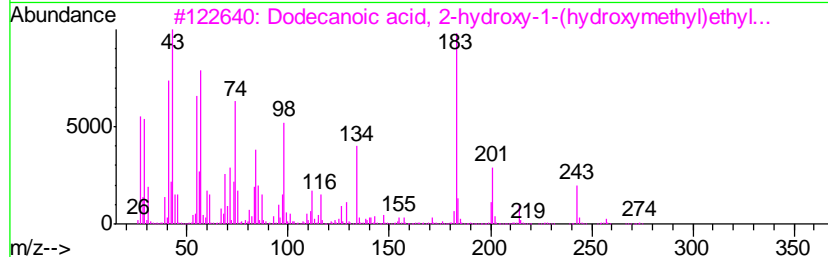
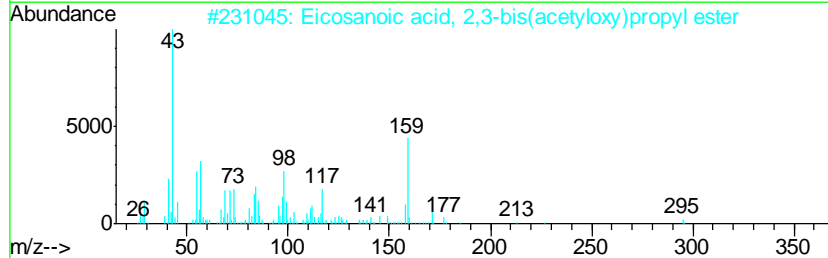
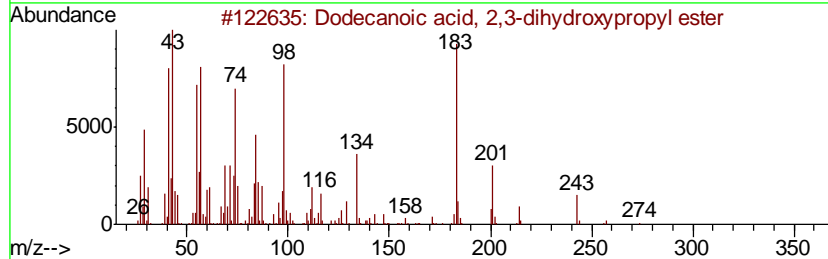
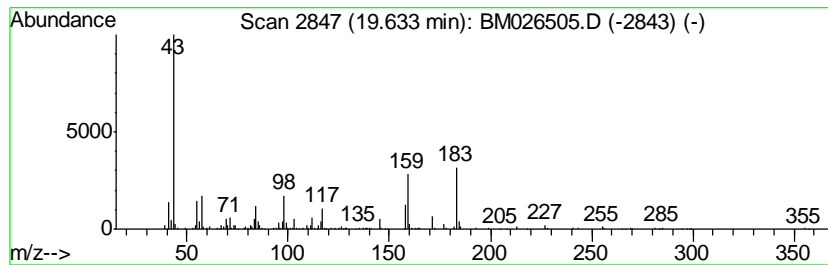
Quant Method : Z:\SVOASRV\HPCHEM1\BNA_M\METHODS\SOM-EPA-BM061220MA.M
 Quant Title : SVOA CALIBRATION

TIC Library : C:\DATABASE\NIST11.L
 TIC Integration Parameters: LSCINT.P

 Peak Number 13 unknown-04 Concentration Rank 10

R.T.	EstConc	Area	Relative to ISTD	R.T.
19.63	3.18 ng/ul	371389	Chrysene-d12	21.01

Hit#	of	Tentative ID	MW	MolForm	CAS#	Qual
1	5	Dodecanoic acid, 2,3-dihydroxypr...	274	C15H30O4	000142-18-7	38
2		Eicosanoic acid, 2,3-bis(acetylo...	470	C27H50O6	055429-67-9	37
3		Dodecanoic acid, 2-hydroxy-1-(hy...	274	C15H30O4	001678-45-1	32
4		9-Octadecenoic acid (Z)-, 2,3-bi...	440	C25H44O6	055401-64-4	25
5		Eicosanoic acid, 2-(acetyloxy)-1...	470	C27H50O6	055429-68-0	25



Data Path : Z:\SVOASRV\HPCHEM1\BNA M\DATA\BM062320\
 Data File : BM026505.D
 Acq On : 23 Jun 2020 17:49
 Operator : JU/CG
 Sample : L3027-08
 Misc :
 ALS Vial : 15 Sample Multiplier: 1

Instrument :
 BNA_M
ClientSampled :
 BG2L1

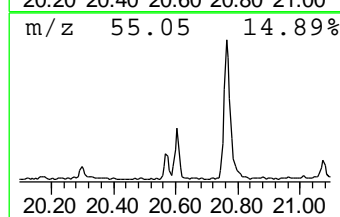
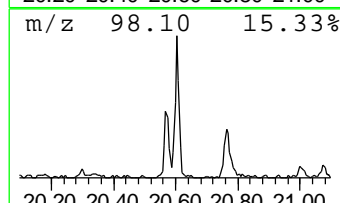
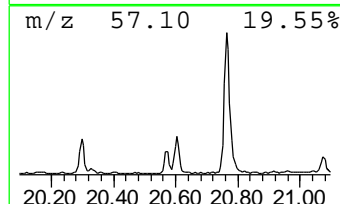
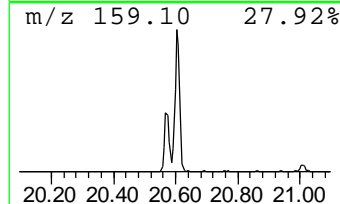
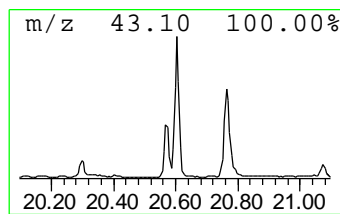
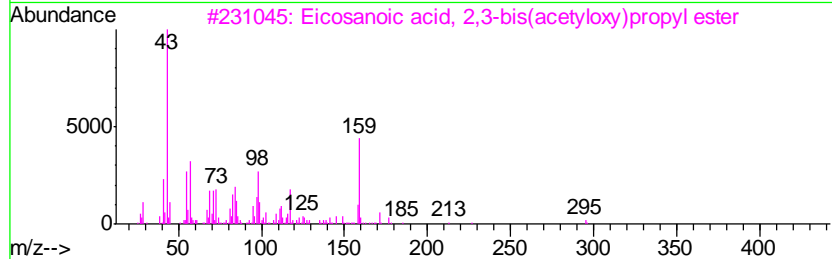
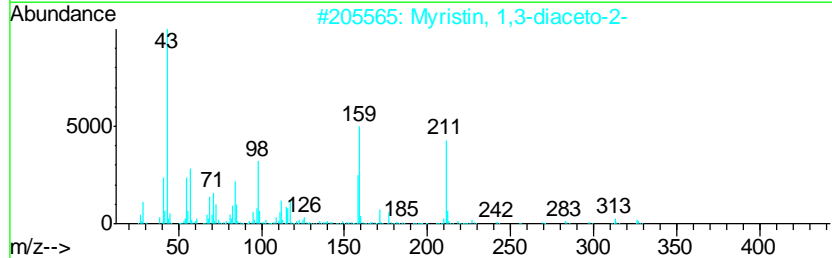
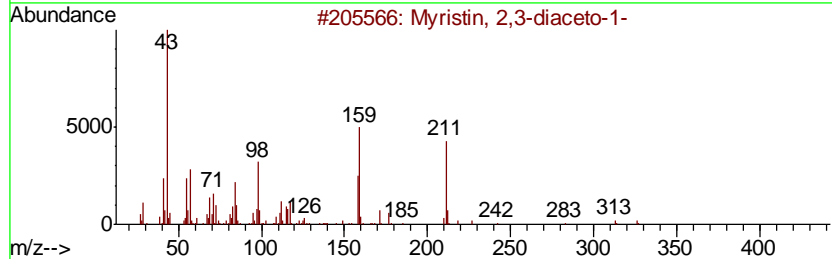
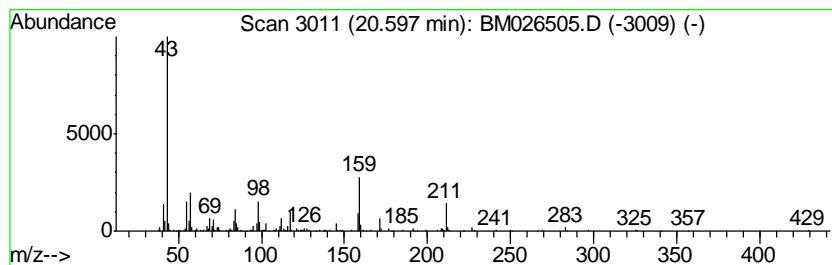
Quant Method : Z:\SVOASRV\HPCHEM1\BNA_M\METHODS\SOM-EPA-BM061220MA.M
 Quant Title : SVOA CALIBRATION

TIC Library : C:\DATABASE\NIST11.L
 TIC Integration Parameters: LSCINT.P

 Peak Number 14 Myristin, 2,3-diaceto-1- Concentration Rank 15

R.T.	EstConc	Area	Relative to ISTD	R.T.
20.60	2.52 ng/ul	294071	Chrysene-d12	21.01

Hit#	of	Tentative ID	MW	MolForm	CAS#	Qual
1	5	Myristin, 2,3-diaceto-1-	386	C21H38O6	014473-55-3	64
2		Myristin, 1,3-diaceto-2-	386	C21H38O6	014290-23-4	64
3		Eicosanoic acid, 2,3-bis(acetylo...	470	C27H50O6	055429-67-9	32
4		Eicosanoic acid, 2-(acetyloxy)-1...	470	C27H50O6	055429-68-0	27
5		9-Octadecenoic acid (Z)-, 2,3-bi...	440	C25H44O6	055401-64-4	25



Data Path : Z:\SVOASRV\HPCHEM1\BNA M\DATA\BM062320\
 Data File : BM026505.D
 Acq On : 23 Jun 2020 17:49
 Operator : JU/CG
 Sample : L3027-08
 Misc :
 ALS Vial : 15 Sample Multiplier: 1

Instrument :
 BNA_M
 ClientSampleID :
 BG2L1

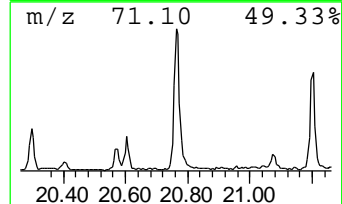
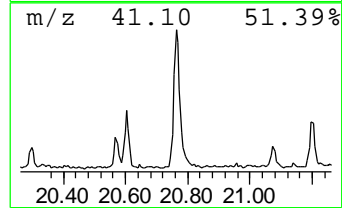
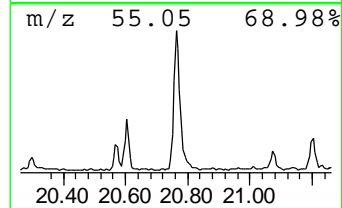
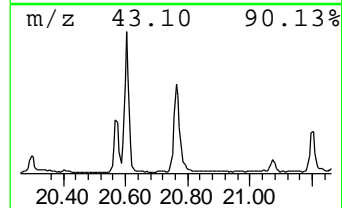
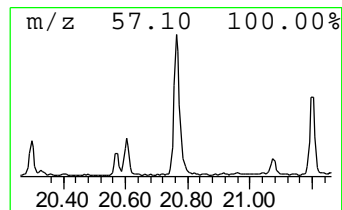
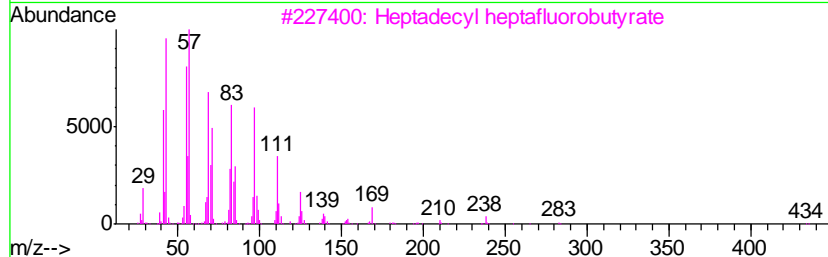
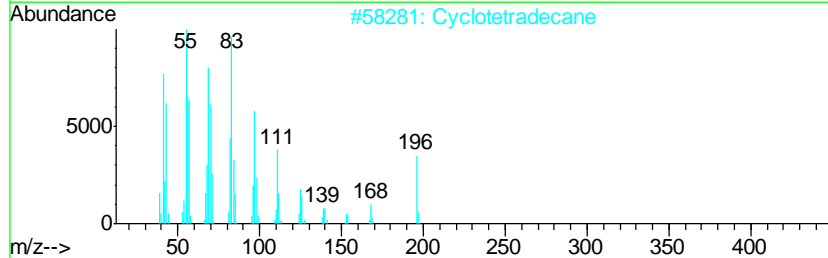
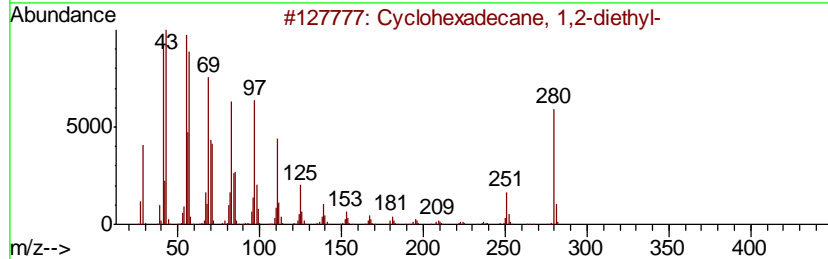
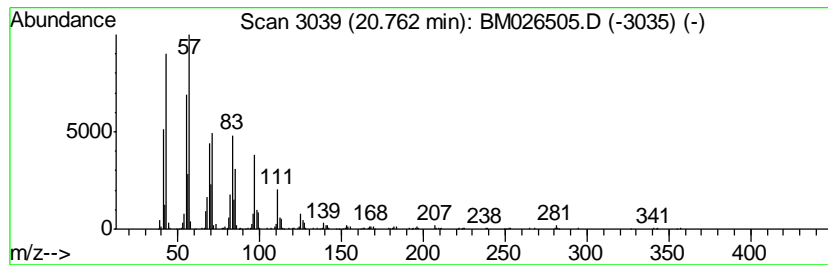
Quant Method : Z:\SVOASRV\HPCHEM1\BNA_M\METHODS\SOM-EPA-BM061220MA.M
 Quant Title : SVOA CALIBRATION

TIC Library : C:\DATABASE\NIST11.L
 TIC Integration Parameters: LSCINT.P

 Peak Number 15 (DEL) Alkane: Cyclic20.76 Concentration Rank 7

R.T.	EstConc	Area	Relative to ISTD	R.T.
20.76	4.74 ng/ul	553740	Chrysene-d12	21.01

Hit#	of	Tentative ID	MW	MolForm	CAS#	Qual
1	5	Cyclohexadecane, 1,2-diethyl-	280	C20H40	1000155-85-3	95
2		Cyclotetradecane	196	C14H28	000295-17-0	92
3		Heptadecyl heptafluorobutyrate	452	C21H35F7O2	959085-66-6	91
4		17-Pentatriacontene	491	C35H70	006971-40-0	91
5		Eicosyl trifluoroacetate	394	C22H41F3O2	1000351-75-2	91



Data Path : Z:\SVOASRV\HPCHEM1\BNA M\DATA\BM062320\
 Data File : BM026505.D
 Acq On : 23 Jun 2020 17:49
 Operator : JU/CG
 Sample : L3027-08
 Misc :
 ALS Vial : 15 Sample Multiplier: 1

Instrument :
 BNA_M
 ClientSampleId :
 BG2L1

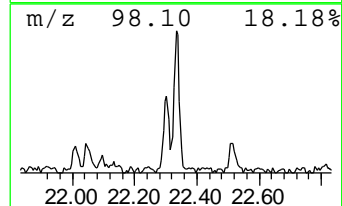
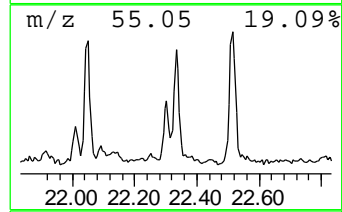
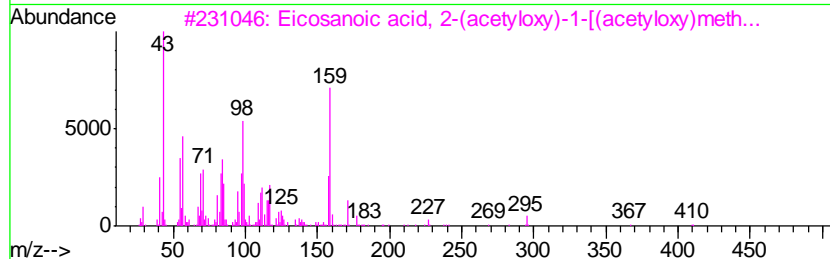
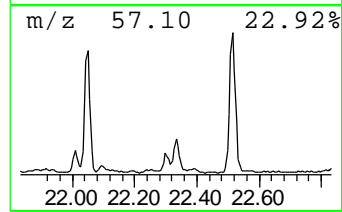
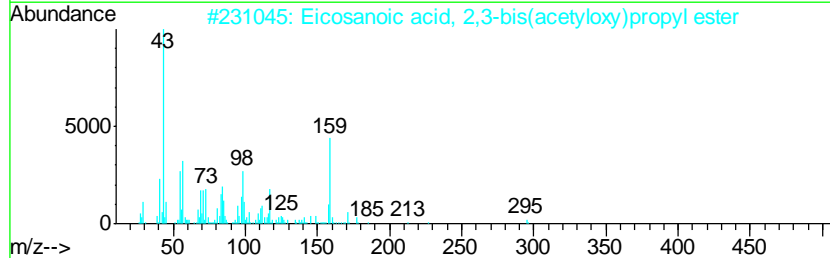
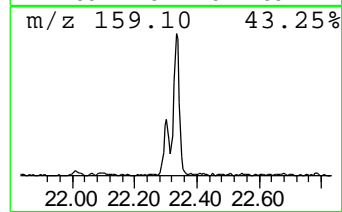
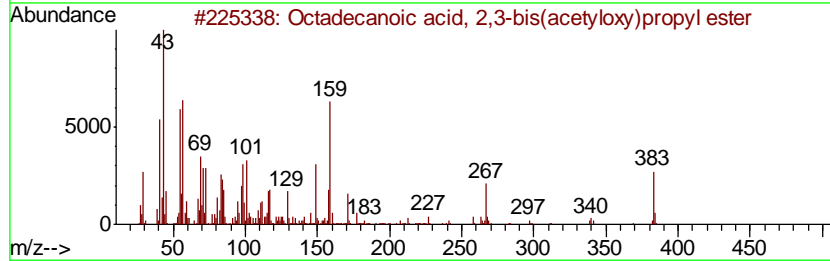
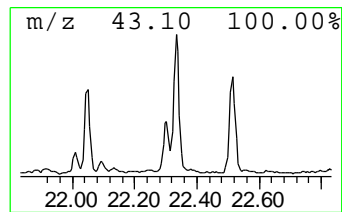
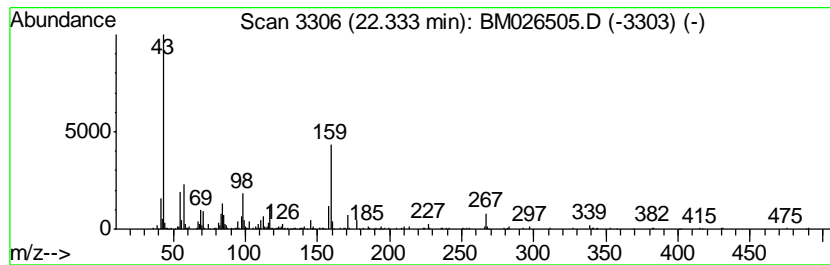
Quant Method : Z:\SVOASRV\HPCHEM1\BNA_M\METHODS\SOM-EPA-BM061220MA.M
 Quant Title : SVOA CALIBRATION

TIC Library : C:\DATABASE\NIST11.L
 TIC Integration Parameters: LSCINT.P

 Peak Number 16 unknown-05 Concentration Rank 20

R.T.	EstConc	Area	Relative to ISTD	R.T.
22.33	2.15 ng/ul	242392	Perylene-d12	23.10

Hit#	of	Tentative ID	MW	MolForm	CAS#	Qual
1	5	Octadecanoic acid, 2,3-bis(acetyloxy)propyl ester	442	C25H46O6	033599-07-4	40
2		Eicosanoic acid, 2,3-bis(acetyloxy)propyl ester	470	C27H50O6	055429-67-9	35
3		Eicosanoic acid, 2-(acetyloxy)-1-(acetyloxy)methyl ester	470	C27H50O6	055429-68-0	27
4		4,5,6-Trimethyltetrahydro-1,3-oxepin-2-one	159	C7H13NOS	085333-98-8	25
5		9,12-Octadecadienoic acid (Z,Z)-diethyl ester	438	C25H42O6	055320-04-2	25



Data Path : Z:\SVOASRV\HPCHEM1\BNA M\DATA\BM062320\
 Data File : BM026505.D
 Acq On : 23 Jun 2020 17:49
 Operator : JU/CG
 Sample : L3027-08
 Misc :
 ALS Vial : 15 Sample Multiplier: 1

Instrument :
 BNA_M
 ClientSampleId :
 BG2L1

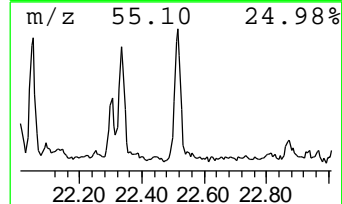
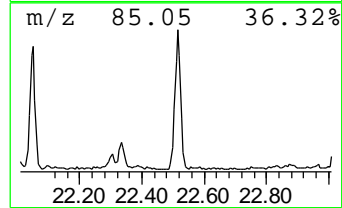
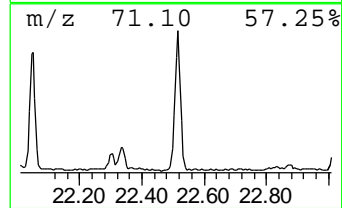
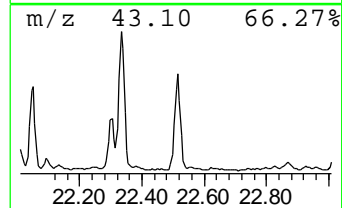
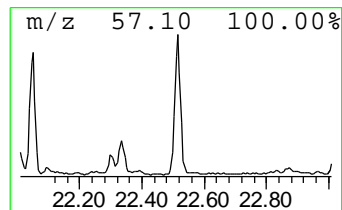
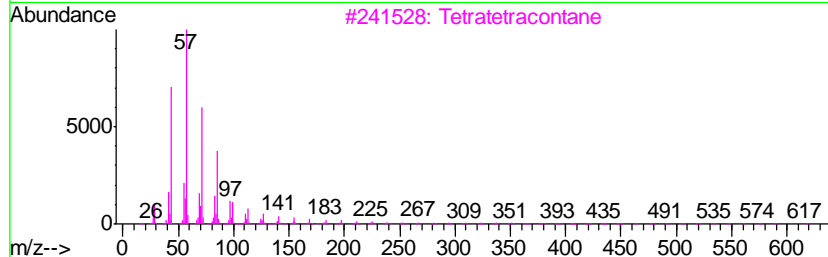
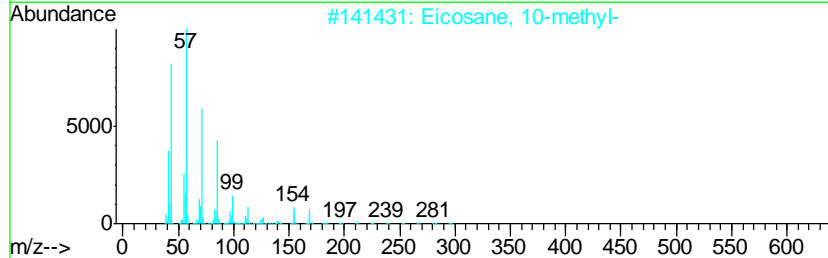
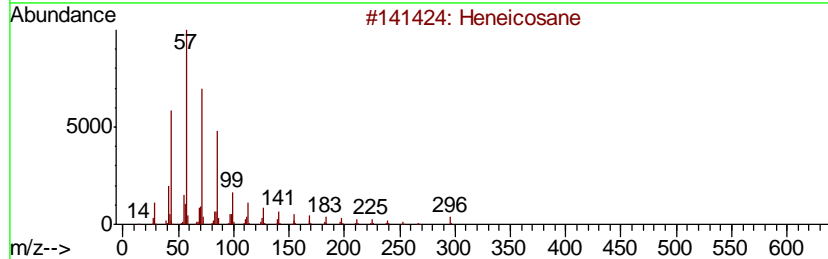
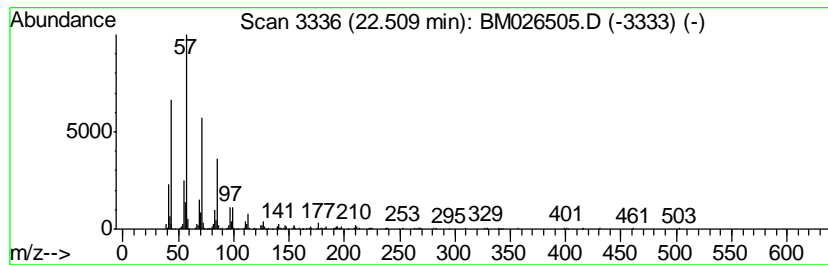
Quant Method : Z:\SVOASRV\HPCHEM1\BNA_M\METHODS\SOM-EPA-BM061220MA.M
 Quant Title : SVOA CALIBRATION

TIC Library : C:\DATABASE\NIST11.L
 TIC Integration Parameters: LSCINT.P

 Peak Number 17 (DEL) Alkane: Straight-Chai... Concentration Rank 18

R.T.	EstConc	Area	Relative to ISTD	R.T.
22.51	2.33 ng/ul	263746	Perylene-d12	23.10

Hit#	of	Tentative ID	MW	MolForm	CAS#	Qual
1	5	Heneicosane	296	C21H44	000629-94-7	95
2		Eicosane, 10-methyl-	296	C21H44	054833-23-7	93
3		Tetratetracontane	619	C44H90	007098-22-8	90
4		Pentadecane, 8-hexyl-	296	C21H44	013475-75-7	90
5		Tetracosane	338	C24H50	000646-31-1	87



Data Path : Z:\SVOASRV\HPCHEM1\BNA M\DATA\BM062320\
 Data File : BM026505.D
 Acq On : 23 Jun 2020 17:49
 Operator : JU/CG
 Sample : L3027-08
 Misc :
 ALS Vial : 15 Sample Multiplier: 1

Instrument :
 BNA_M
 ClientSampleID :
 BG2L1

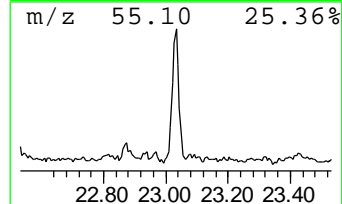
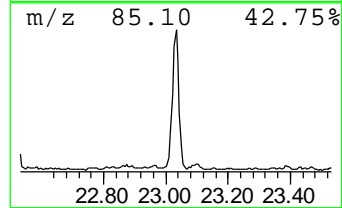
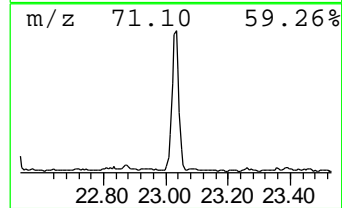
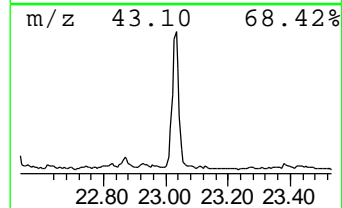
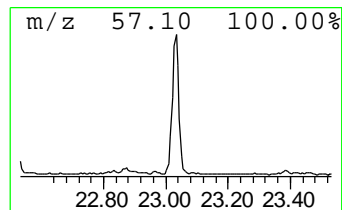
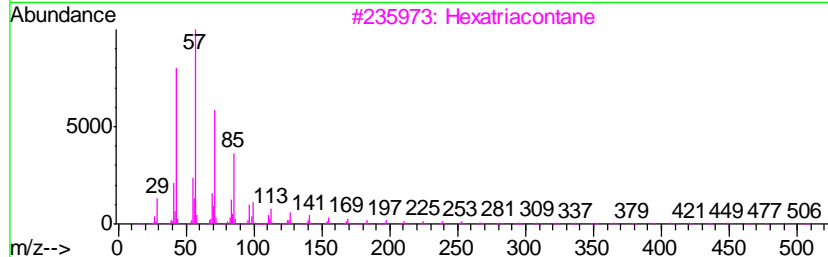
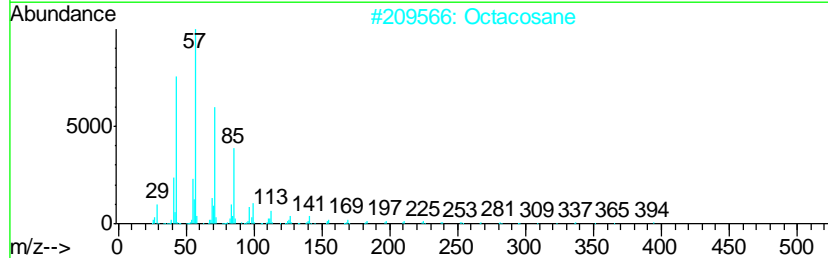
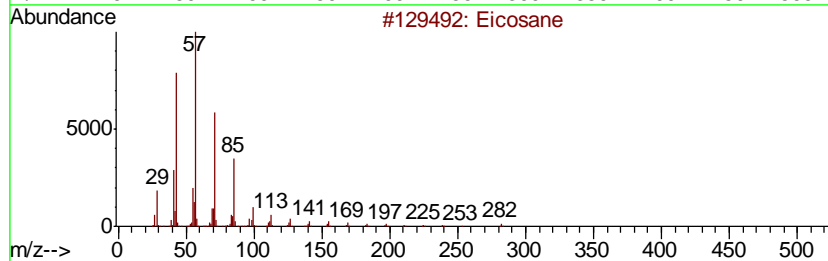
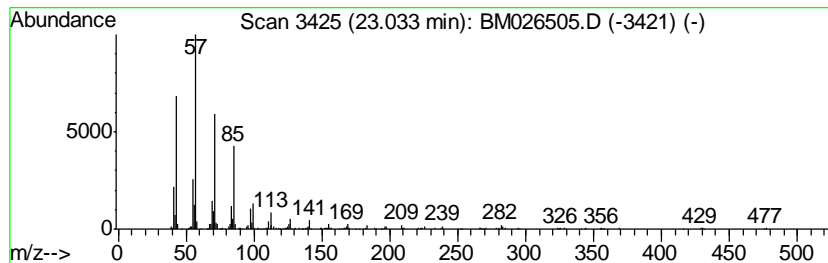
Quant Method : Z:\SVOASRV\HPCHEM1\BNA_M\METHODS\SOM-EPA-BM061220MA.M
 Quant Title : SVOA CALIBRATION

TIC Library : C:\DATABASE\NIST11.L
 TIC Integration Parameters: LSCINT.P

 Peak Number 18 (DEL) Alkane: Straight-Chai... Concentration Rank 11

R.T.	EstConc	Area	Relative to ISTD	R.T.
23.03	2.78 ng/ul	313944	Perylene-d12	23.10

Hit#	of	Tentative ID	MW	MolForm	CAS#	Qual
1	5	Eicosane	282	C20H42	000112-95-8	95
2		Octacosane	394	C28H58	000630-02-4	90
3		Hexatriacontane	507	C36H74	000630-06-8	90
4		Tetracosane	338	C24H50	000646-31-1	90
5		Hexacosane	366	C26H54	000630-01-3	87



Data Path : Z:\SVOASRV\HPCHEM1\BNA M\DATA\BM062320\
 Data File : BM026505.D
 Acq On : 23 Jun 2020 17:49
 Operator : JU/CG
 Sample : L3027-08
 Misc :
 ALS Vial : 15 Sample Multiplier: 1

Instrument :
 BNA_M
 ClientSampleID :
 BG2L1

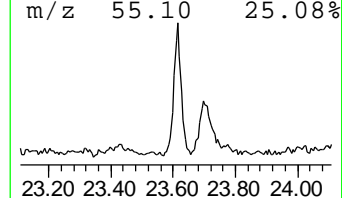
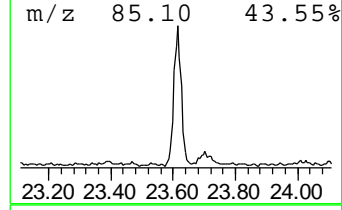
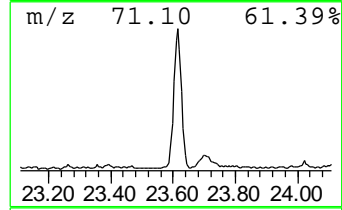
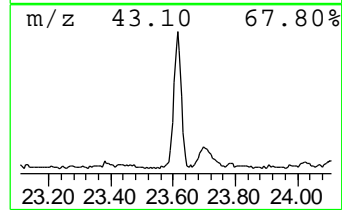
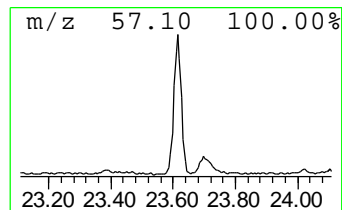
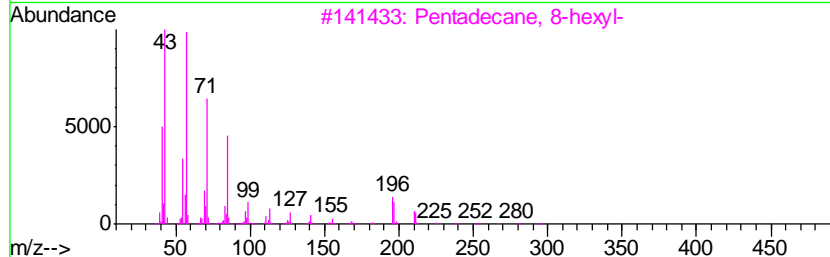
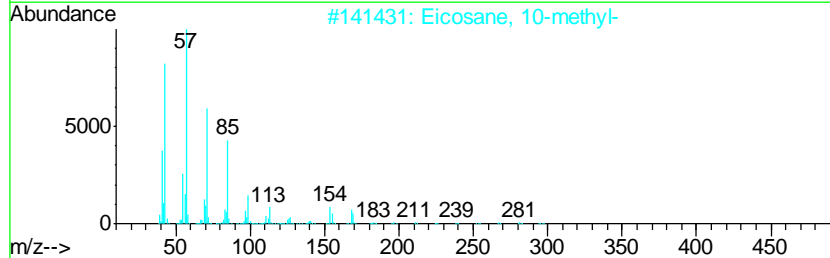
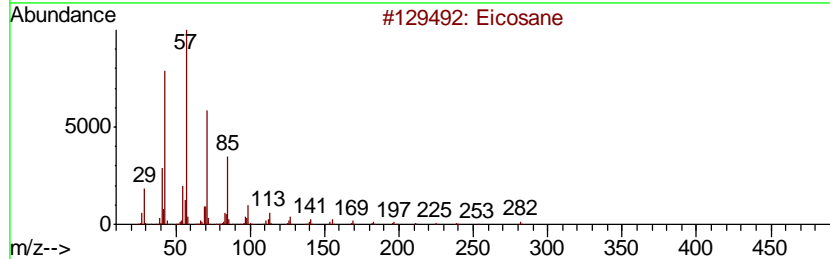
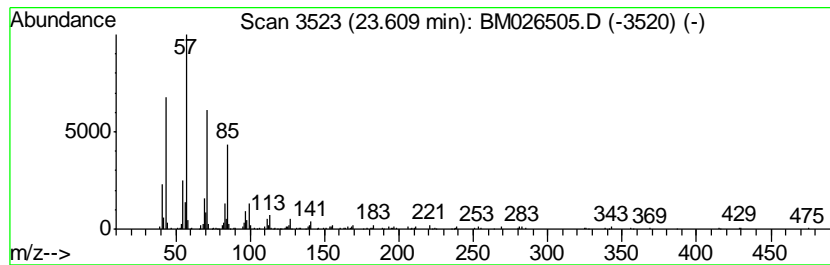
Quant Method : Z:\SVOASRV\HPCHEM1\BNA_M\METHODS\SOM-EPA-BM061220MA.M
 Quant Title : SVOA CALIBRATION

TIC Library : C:\DATABASE\NIST11.L
 TIC Integration Parameters: LSCINT.P

 Peak Number 19 (DEL) Alkane: Straight-Chai... Concentration Rank 12

R.T.	EstConc	Area	Relative to ISTD	R.T.
23.61	2.72 ng/ul	307522	Perylene-d12	23.10

Hit#	of	Tentative ID	MW	MolForm	CAS#	Qual
1	5	Eicosane	282	C20H42	000112-95-8	95
2		Eicosane, 10-methyl-	296	C21H44	054833-23-7	93
3		Pentadecane, 8-hexyl-	296	C21H44	013475-75-7	93
4		Heptacosane	380	C27H56	000593-49-7	90
5		2-methyloctacosane	408	C29H60	1000376-72-8	90



Data Path : Z:\SVOASRV\HPCHEM1\BNA M\DATA\BM062320\
 Data File : BM026505.D
 Acq On : 23 Jun 2020 17:49
 Operator : JU/CG
 Sample : L3027-08
 Misc :
 ALS Vial : 15 Sample Multiplier: 1

Instrument :
 BNA_M
 ClientSampleID :
 BG2L1

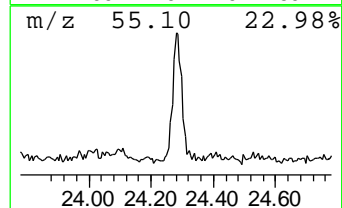
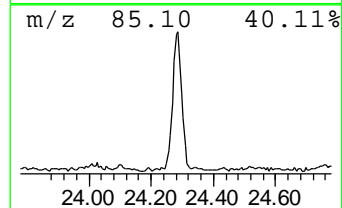
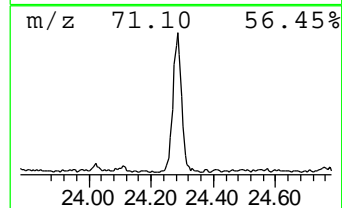
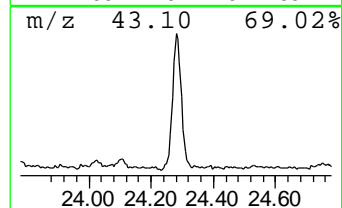
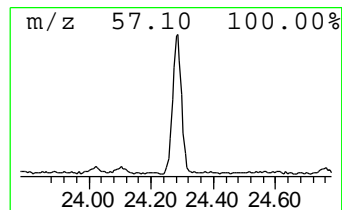
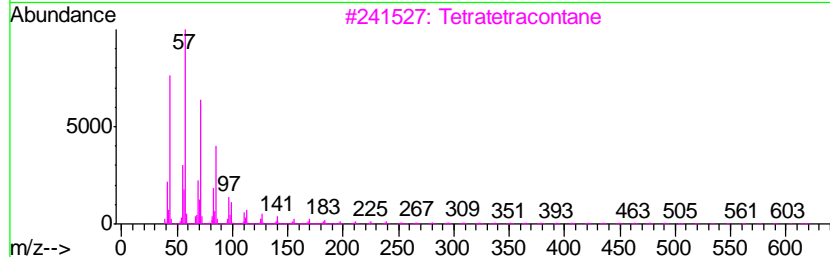
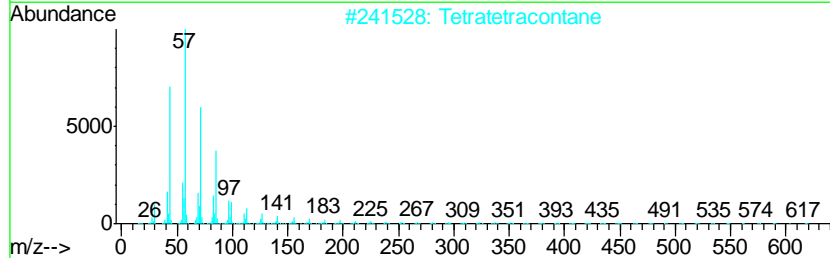
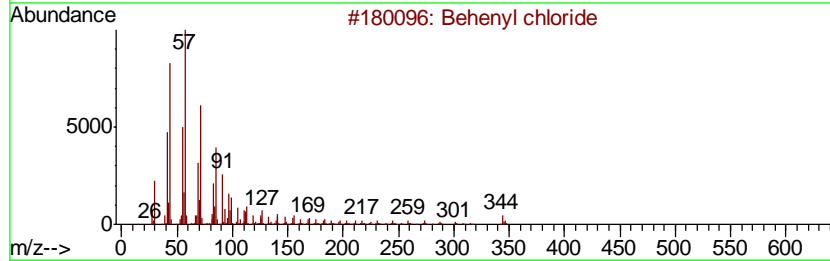
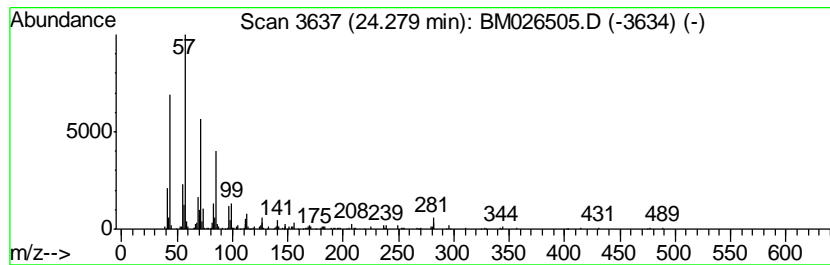
Quant Method : Z:\SVOASRV\HPCHEM1\BNA_M\METHODS\SOM-EPA-BM061220MA.M
 Quant Title : SVOA CALIBRATION

TIC Library : C:\DATABASE\NIST11.L
 TIC Integration Parameters: LSCINT.P

 Peak Number 20 Behenyl chloride Concentration Rank 17

R.T.	EstConc	Area	Relative to ISTD	R.T.
24.28	2.38 ng/ul	268910	Perylene-d12	23.10

Hit#	of	Tentative ID	MW	MolForm	CAS#	Qual
1	5	Behenyl chloride	344	C22H45Cl	042217-03-8	87
2		Tetratetracontane	619	C44H90	007098-22-8	87
3		Tetratetracontane	619	C44H90	007098-22-8	87
4		Heptacosane	380	C27H56	000593-49-7	87
5		Octacosane	394	C28H58	000630-02-4	87



Data Path : Z:\SVOASRV\HPCHEM1\BNA_M\DATA\BM062320\
 Data File : BM026505.D
 Acq On : 23 Jun 2020 17:49
 Operator : JU/CG
 Sample : L3027-08
 Misc :
 ALS Vial : 15 Sample Multiplier: 1

Instrument :
 BNA_M
 ClientSampleId :
 BG2L1

Quant Method : Z:\SVOASRV\HPCHEM1\BNA_M\METHODS\SOM-EPA-BM061220MA.M
 Quant Title : SVOA CALIBRATION

TIC Library : C:\DATABASE\NIST11.L
 TIC Integration Parameters: LSCINT.P

TIC Top Hit name	RT	EstConc	Units	Response	--Internal Standard--			
					#	RT	Resp	Conc
1,2,3-Propanetriol...	10.67	12.9	ng/ul	626425	2	10.14	973363	20.0
Dodecanoic acid	14.52	2.6	ng/ul	178166	3	14.04	1391940	20.0
unknown-01	15.82	2.5	ng/ul	227784	4	16.80	1824430	20.0
Phenol, 4-(1,1,3,...	15.90	5.8	ng/ul	524164	4	16.80	1824430	20.0
unknown-02	15.97	8.4	ng/ul	766846	4	16.80	1824430	20.0
unknown-03	16.07	3.6	ng/ul	326736	4	16.80	1824430	20.0
Acetamide, N-(3-m...	16.22	5.8	ng/ul	531221	4	16.80	1824430	20.0
Phenol, 4-(1,1-di...	16.29	6.1	ng/ul	559782	4	16.80	1824430	20.0
3,4-Dihydrocoumar...	16.33	2.7	ng/ul	247357	4	16.80	1824430	20.0
n-Hexadecanoic acid	17.73	2.2	ng/ul	203999	4	16.80	1824430	20.0
unknown-04	19.63	3.2	ng/ul	371389	5	21.01	2334010	20.0
Myristin, 2,3-dia...	20.60	2.5	ng/ul	294071	5	21.01	2334010	20.0
(DEL) Alkane: Cyc...	20.76	4.7	ng/ul	553740	5	21.01	2334010	20.0
unknown-05	22.33	2.1	ng/ul	242392	6	23.10	2259740	20.0
(DEL) Alkane: Str...	22.51	2.3	ng/ul	263746	6	23.10	2259740	20.0
(DEL) Alkane: Str...	23.03	2.8	ng/ul	313944	6	23.10	2259740	20.0
(DEL) Alkane: Str...	23.61	2.7	ng/ul	307522	6	23.10	2259740	20.0
Behenyl chloride	24.28	2.4	ng/ul	268910	6	23.10	2259740	20.0