

Data Path : Z:\SVOASRV\HPCHEM1\BNA M\DATA\BM062320\
 Data File : BM026523.D
 Acq On : 24 Jun 2020 05:55
 Operator : JU/CG
 Sample : L3027-04
 Misc :
 ALS Vial : 33 Sample Multiplier: 1

Instrument :
 BNA_M
 ClientSampled :
 BG2K8

Integration Parameters: LSCINT.P

Integrator: RTE
 Smoothing : OFF
 Sampling : 1
 Start Thrs: 0.2
 Stop Thrs : 0

Filtering: 5
 Min Area: 0.1 % of largest Peak
 Max Peaks: 100
 Peak Location: TOP

If leading or trailing edge < 100 prefer < Baseline drop else tangent >
 Peak separation: 5

Method : Z:\SVOASRV\HPCHEM1\BNA_M\METHODS\SOM-EPA-BM061220MA.M
 Title : SVOA CALIBRATION

Signal : TIC: BM026526.D

peak #	R.T. min	first scan	max scan	last scan	PK TY	peak height	corr. area	corr. % max.	% of total
1	5.440	425	434	440	rVB5	18390	46439	0.31%	0.048%
2	5.969	518	524	528	rBV	26777	42827	0.28%	0.044%
3	6.075	538	542	548	rVB	30407	45452	0.30%	0.047%
4	6.398	593	597	601	rVV	31631	40815	0.27%	0.042%
5	6.457	601	607	615	rVV	60552	122335	0.81%	0.127%
6	6.522	615	618	621	rVV3	22667	39124	0.26%	0.041%
7	6.587	621	629	641	rVB	543177	920942	6.06%	0.956%
8	6.734	647	654	664	rBV	453272	758963	5.00%	0.788%
9	6.875	675	678	680	rVV3	25189	39476	0.26%	0.041%
10	6.922	680	686	698	rVB	544318	906758	5.97%	0.941%
11	7.022	698	703	713	rBV2	103155	176422	1.16%	0.183%
12	7.375	756	763	772	rVB	670063	1037265	6.83%	1.077%
13	7.463	772	778	782	rBV2	30185	56203	0.37%	0.058%
14	7.610	793	803	807	rBV4	60621	129478	0.85%	0.134%
15	7.651	807	810	819	rVB3	33860	69504	0.46%	0.072%
16	7.922	849	856	862	rBV	65459	96627	0.64%	0.100%
17	8.051	873	878	882	rBV2	43585	77623	0.51%	0.081%
18	8.104	882	887	894	rVV	675975	1074509	7.07%	1.116%
19	8.186	898	901	908	rVV5	21442	48262	0.32%	0.050%
20	8.257	908	913	916	rVV5	21879	43754	0.29%	0.045%
21	8.522	953	958	964	rBV	513912	803293	5.29%	0.834%
22	8.610	969	973	982	rVB	109372	166704	1.10%	0.173%
23	9.239	1074	1080	1090	rBV	474053	775432	5.11%	0.805%
24	9.322	1090	1094	1104	rVB8	28699	62800	0.41%	0.065%
25	9.780	1163	1172	1187	rVV	613313	1133210	7.46%	1.177%
26	9.892	1187	1191	1205	rVB	14177	48044	0.32%	0.050%
27	10.133	1223	1232	1240	rBV	895184	1443396	9.50%	1.499%
28	10.292	1252	1259	1271	rBV	458770	915107	6.02%	0.950%
29	11.186	1406	1411	1416	rBV3	22802	39345	0.26%	0.041%
30	11.598	1474	1481	1488	rVB	23111	43540	0.29%	0.045%
31	12.221	1580	1587	1598	rBV5	32533	98586	0.65%	0.102%
32	12.874	1695	1698	1706	rVB2	27800	41790	0.28%	0.043%
33	13.463	1792	1798	1803	rBV	1226778	1657123	10.91%	1.720%
34	13.510	1803	1806	1810	rVV	241517	319299	2.10%	0.331%

Data Path : Z:\SVOASRV\HPCHEM1\BNA M\DATA\BM062320\
 Data File : BM026523.D
 Acq On : 24 Jun 2020 05:55
 Operator : JU/CG
 Sample : L3027-04
 Misc :
 ALS Vial : 33 Sample Multiplier: 1

Instrument :
 BNA_M
 ClientSampleId :
 BG2K8

Integration Parameters: LSCINT.P

Integrator: RTE
 Smoothing : OFF Filtering: 5
 Sampling : 1 Min Area: 0.1 % of largest Peak
 Start Thrs: 0.2 Max Peaks: 100
 Stop Thrs : 0 Peak Location: TOP

If leading or trailing edge < 100 prefer < Baseline drop else tangent >
 Peak separation: 5

Method : Z:\SVOASRV\HPCHEM1\BNA_M\METHODS\SOM-EPA-BM061220MA.M
 Title : SVOA CALIBRATION

35	13.551	1810	1813	1817	rVB	32120	40295	0.27%	0.042%
36	13.721	1835	1842	1854	rBV	1323184	1871032	12.32%	1.943%
37	13.968	1878	1884	1888	rBV2	83685	127705	0.84%	0.133%
38	14.033	1889	1895	1906	rVV	1287415	1926064	12.68%	2.000%
39	14.121	1906	1910	1918	rVB9	18596	42393	0.28%	0.044%
40	14.286	1932	1938	1942	rBV	430955	718559	4.73%	0.746%
41	14.510	1972	1976	1979	rBV	66022	86676	0.57%	0.090%
42	14.598	1988	1991	1995	rVB3	30673	37130	0.24%	0.039%
43	14.645	1995	1999	2002	rBV	72377	106204	0.70%	0.110%
44	14.680	2002	2005	2011	rVB	137134	193704	1.28%	0.201%
45	14.780	2018	2022	2028	rBV2	60255	104447	0.69%	0.108%
46	14.933	2044	2048	2053	rVB	75898	88391	0.58%	0.092%
47	15.039	2060	2066	2076	rBV2	1562749	2389983	15.73%	2.481%
48	15.121	2076	2080	2086	rBV5	29863	48130	0.32%	0.050%
49	15.180	2086	2090	2095	rBV	552354	836984	5.51%	0.869%
50	15.274	2103	2106	2111	rVB5	26032	36661	0.24%	0.038%
51	15.345	2113	2118	2122	rVB	84836	125776	0.83%	0.131%
52	15.545	2149	2152	2155	rBV4	26666	38361	0.25%	0.040%
53	15.668	2170	2173	2178	rVB6	30548	38434	0.25%	0.040%
54	15.715	2179	2181	2185	rVV4	27105	37221	0.25%	0.039%
55	15.768	2185	2190	2193	rVV	208436	301735	1.99%	0.313%
56	15.821	2193	2199	2208	rVB2	282724	597102	3.93%	0.620%
57	15.962	2220	2223	2229	rBV4	43939	70481	0.46%	0.073%
58	16.021	2230	2233	2236	rBV2	39182	59685	0.39%	0.062%
59	16.068	2238	2241	2244	rVB	82303	95422	0.63%	0.099%
60	16.115	2244	2249	2253	rBV3	76820	151180	1.00%	0.157%
61	16.168	2254	2258	2262	rVB4	155166	211775	1.39%	0.220%
62	16.221	2263	2267	2269	rBV3	98217	148086	0.97%	0.154%
63	16.468	2301	2309	2316	rBV	10364302	15189424	100.00%	15.770%
64	16.592	2327	2330	2335	rVB	157423	193564	1.27%	0.201%
65	16.645	2335	2339	2344	rVB	204160	278951	1.84%	0.290%
66	16.798	2359	2365	2369	rBV	1593115	2258375	14.87%	2.345%
67	16.833	2369	2371	2375	rVB	98465	120545	0.79%	0.125%
68	16.892	2376	2381	2391	rVV2	1753893	2388551	15.73%	2.480%
69	17.174	2425	2429	2435	rBV2	195595	307997	2.03%	0.320%
70	17.251	2439	2442	2447	rVB	88802	132571	0.87%	0.138%
71	17.333	2452	2456	2460	rVB	262754	321387	2.12%	0.334%

Data Path : Z:\SVOASRV\HPCHEM1\BNA M\DATA\BM062320\
 Data File : BM026523.D
 Acq On : 24 Jun 2020 05:55
 Operator : JU/CG
 Sample : L3027-04
 Misc :
 ALS Vial : 33 Sample Multiplier: 1

Instrument :
 BNA_M
 ClientSampleId :
 BG2K8

Integration Parameters: LSCINT.P

Integrator: RTE
 Smoothing : OFF
 Sampling : 1
 Start Thrs: 0.2
 Stop Thrs : 0

Filtering: 5
 Min Area: 0.1 % of largest Peak
 Max Peaks: 100
 Peak Location: TOP

If leading or trailing edge < 100 prefer < Baseline drop else tangent >
 Peak separation: 5

Method : Z:\SVOASRV\HPCHEM1\BNA_M\METHODS\SOM-EPA-BM061220MA.M
 Title : SVOA CALIBRATION

72	17.745	2520	2526	2530	rBV	1557268	2144926	14.12%	2.227%
73	17.792	2530	2534	2538	rVB	517864	682012	4.49%	0.708%
74	18.021	2570	2573	2579	rVB	437229	523941	3.45%	0.544%
75	18.198	2600	2603	2609	rBV	181234	212625	1.40%	0.221%
76	18.492	2649	2653	2662	rVB2	216640	322729	2.12%	0.335%
77	18.668	2679	2683	2688	rBV	914418	978491	6.44%	1.016%
78	18.933	2726	2728	2737	rVB4	239176	379056	2.50%	0.394%
79	19.045	2742	2747	2752	rBV	879292	1232695	8.12%	1.280%
80	19.197	2769	2773	2779	rVB2	1903126	2528977	16.65%	2.626%
81	19.256	2779	2783	2788	rBV	1582384	1798069	11.84%	1.867%
82	19.797	2871	2875	2880	rVB	2173665	2350114	15.47%	2.440%
83	20.297	2956	2960	2965	rVB	2656299	2819588	18.56%	2.927%
84	20.762	3034	3039	3043	rVB	3311716	3983206	26.22%	4.135%
85	20.956	3069	3072	3076	rBV2	583212	730126	4.81%	0.758%
86	21.003	3077	3080	3084	rVB	1738232	2023644	13.32%	2.101%
87	21.197	3109	3113	3117	rBV	2703886	2897440	19.08%	3.008%
88	21.615	3180	3184	3191	rBV	2508563	2893083	19.05%	3.004%
89	22.044	3253	3257	3262	rBV	2141106	2710124	17.84%	2.814%
90	22.509	3332	3336	3341	rBV	1621803	2077970	13.68%	2.157%
91	22.962	3409	3413	3418	rBV	1056214	1626019	10.70%	1.688%
92	23.027	3420	3424	3427	rBV	1072725	1450751	9.55%	1.506%
93	23.091	3432	3435	3441	rVB2	1159291	1787914	11.77%	1.856%
94	23.174	3446	3449	3456	rVB4	599929	901325	5.93%	0.936%
95	23.609	3519	3523	3530	rVB	910376	1473195	9.70%	1.529%
96	24.015	3588	3592	3602	rVB2	671604	1386597	9.13%	1.440%
97	24.274	3633	3636	3641	rBV	388449	768425	5.06%	0.798%
98	24.427	3657	3662	3670	rVB	1000748	1989899	13.10%	2.066%
99	24.527	3672	3679	3691	rVB2	1744914	4510760	29.70%	4.683%
100	25.138	3778	3783	3796	rVB	890977	2095302	13.79%	2.175%

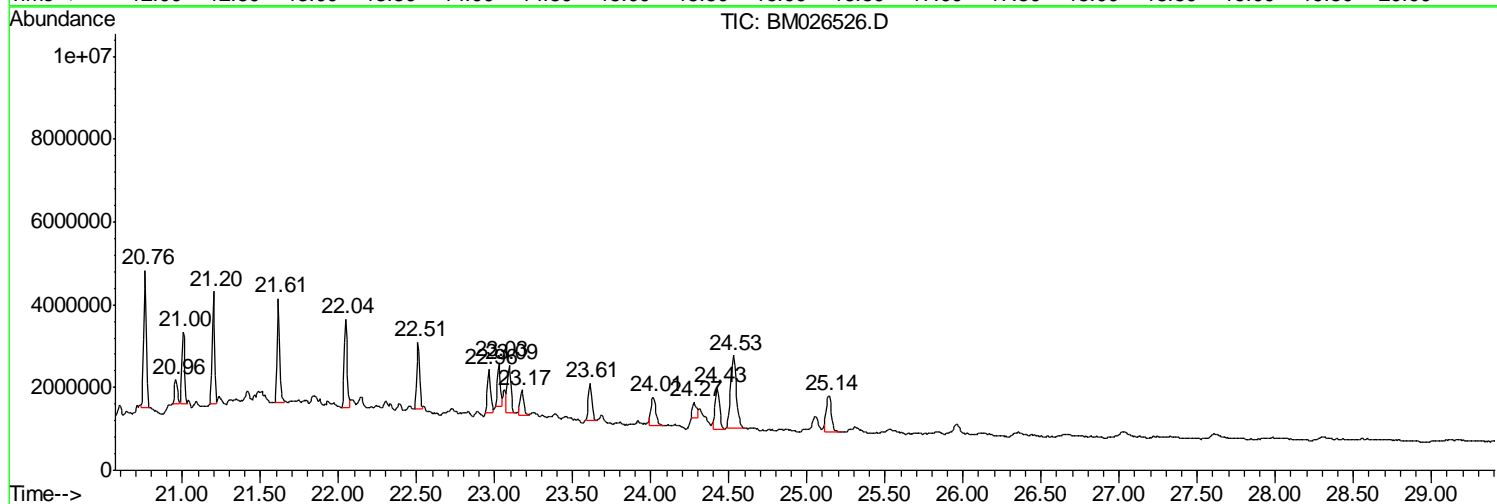
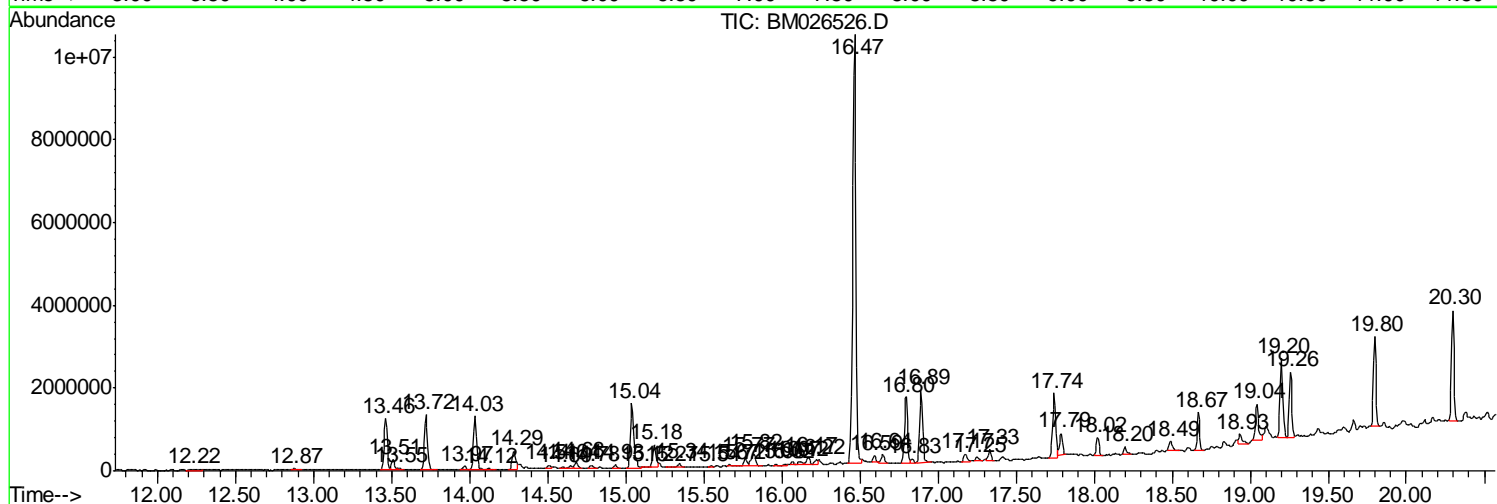
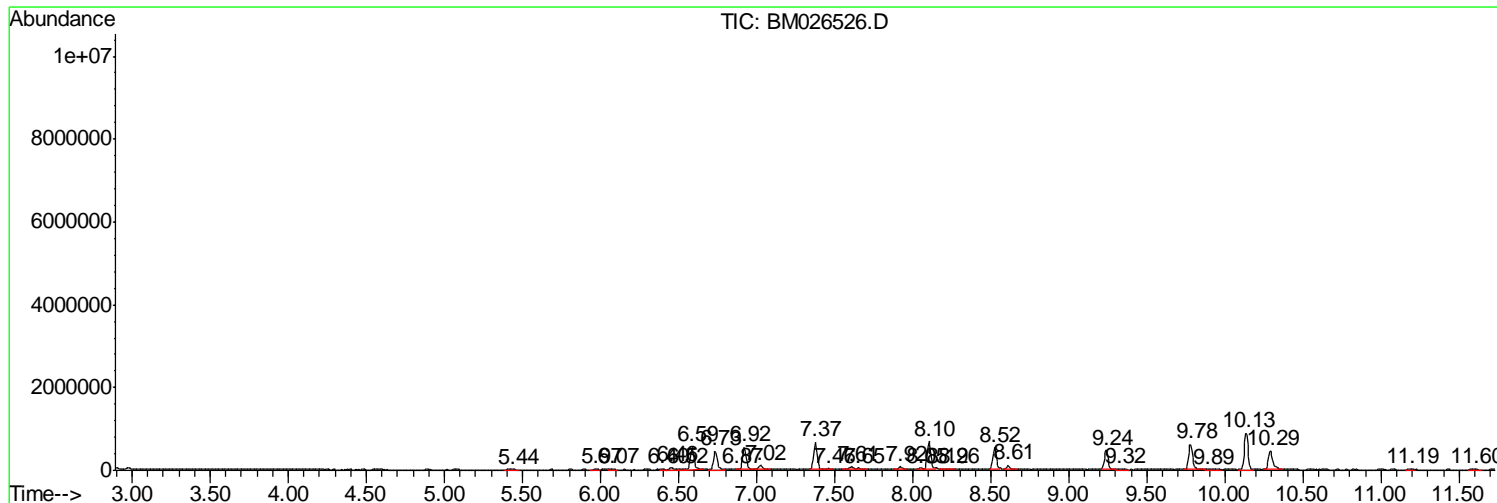
Sum of corrected areas: 96320431

Data Path : Z:\SVOASRV\HPCHEM1\BNA M\DATA\BM062320\
 Data File : BM026523.D
 Acq On : 24 Jun 2020 05:55
 Operator : JU/CG
 Sample : L3027-04
 Misc :
 ALS Vial : 33 Sample Multiplier: 1

Instrument :
 BNA_M
ClientSampleId :
 BG2K8

Quant Method : Z:\SVOASRV\HPCHEM1\BNA_M\METHODS\SOM-EPA-BM061220MA.M
 Quant Title : SVOA CALIBRATION

TIC Library : C:\DATABASE\NIST11.L
 TIC Integration Parameters: LSCINT.P



Data Path : Z:\SVOASRV\HPCHEM1\BNA M\DATA\BM062320\
 Data File : BM026523.D
 Acq On : 24 Jun 2020 05:55
 Operator : JU/CG
 Sample : L3027-04
 Misc :
 ALS Vial : 33 Sample Multiplier: 1

Instrument :
 BNA_M
 ClientSampled :
 BG2K8

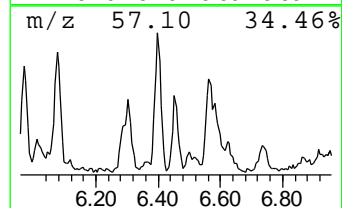
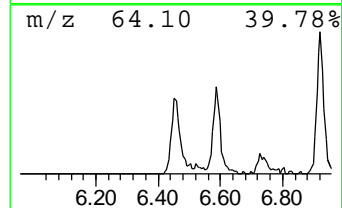
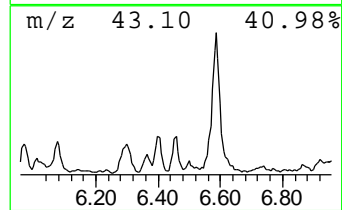
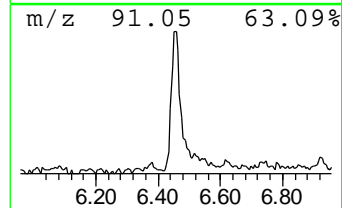
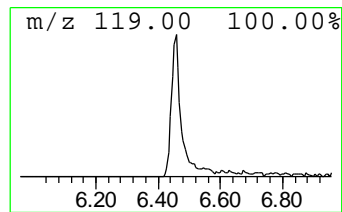
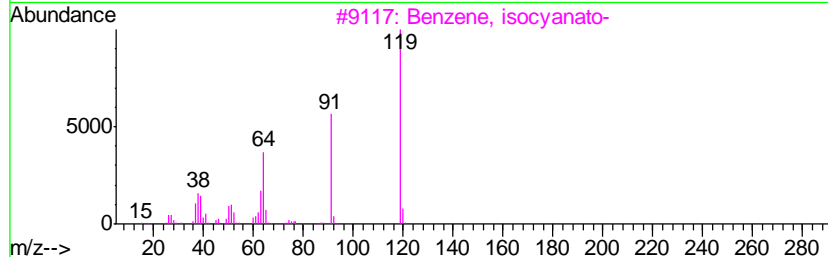
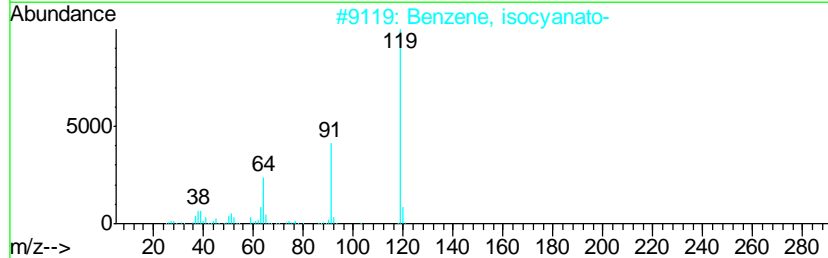
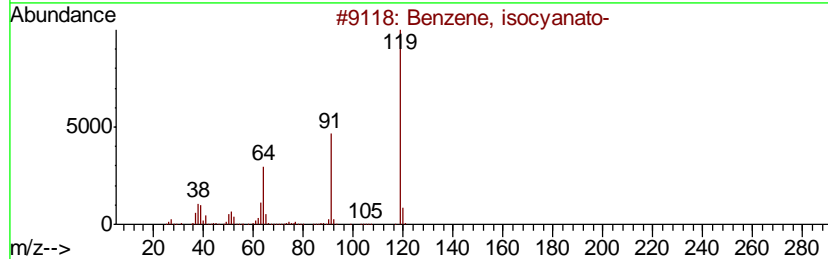
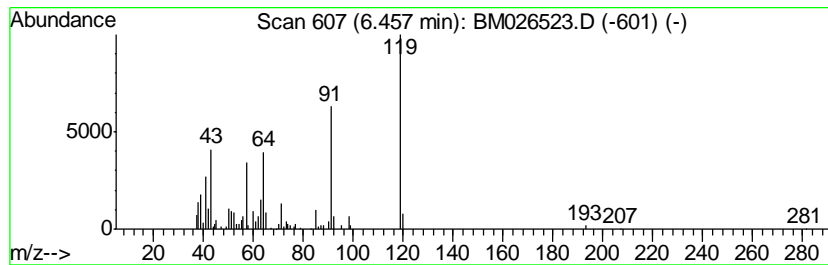
Quant Method : Z:\SVOASRV\HPCHEM1\BNA_M\METHODS\SOM-EPA-BM061220MA.M
 Quant Title : SVOA CALIBRATION

TIC Library : C:\DATABASE\NIST11.L
 TIC Integration Parameters: LSCINT.P

 Peak Number 1 Benzene, isocyanato- Concentration Rank 30

R.T.	EstConc	Area	Relative to ISTD	R.T.
6.46	2.36 ng/ul	122335	1,4-Dichlorobenzene-d4	7.38

Hit#	of	Tentative ID	MW	MolForm	CAS#	Qual
1	5	Benzene, isocyanato-	119	C7H5NO	000103-71-9	94
2		Benzene, isocyanato-	119	C7H5NO	000103-71-9	93
3		Benzene, isocyanato-	119	C7H5NO	000103-71-9	87
4		1H-Benzotriazole	119	C6H5N3	000095-14-7	87
5		Proximpnam	192	C10H12N2O2	002828-42-4	87



Data Path : Z:\SVOASRV\HPCHEM1\BNA M\DATA\BM062320\
 Data File : BM026523.D
 Acq On : 24 Jun 2020 05:55
 Operator : JU/CG
 Sample : L3027-04
 Misc :
 ALS Vial : 33 Sample Multiplier: 1

Instrument :
 BNA_M
 ClientSampleId :
 BG2K8

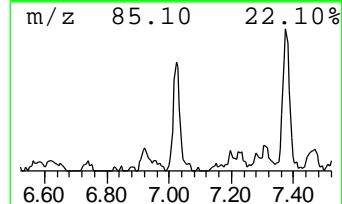
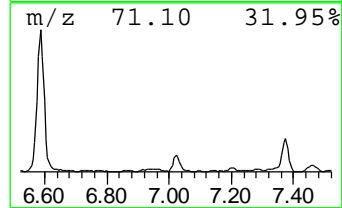
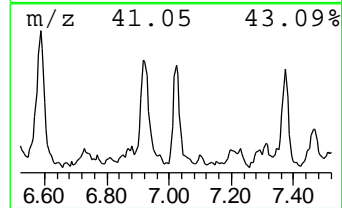
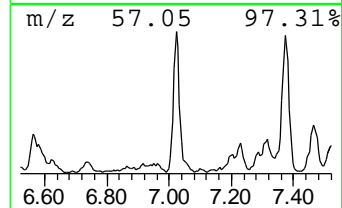
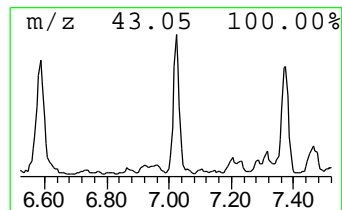
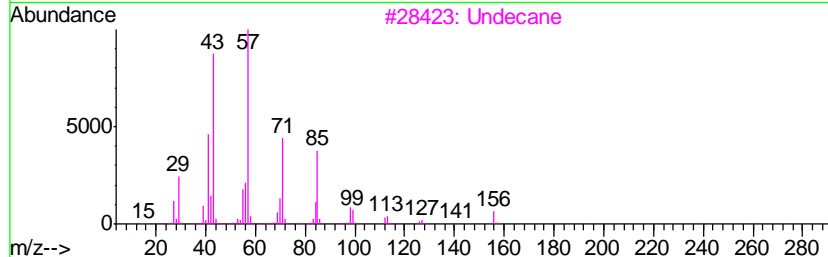
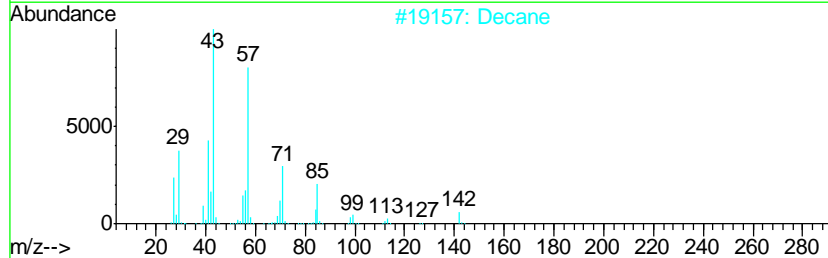
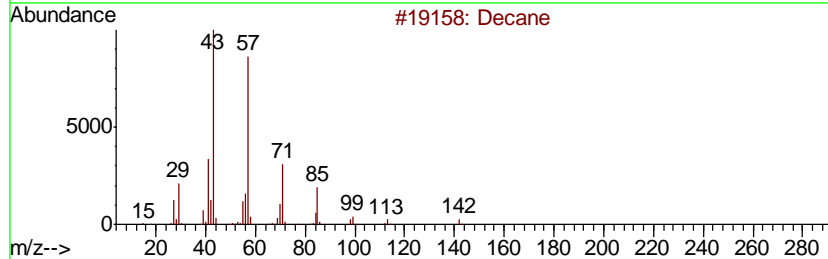
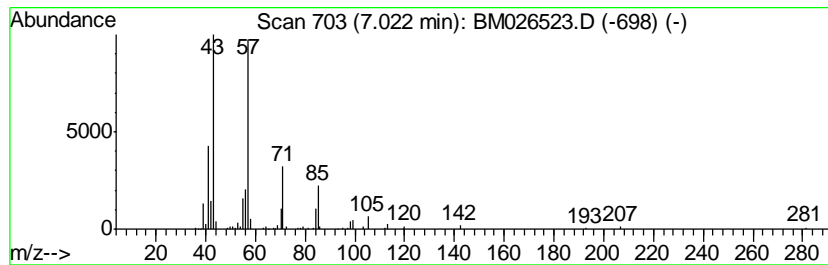
Quant Method : Z:\SVOASRV\HPCHEM1\BNA_M\METHODS\SOM-EPA-BM061220MA.M
 Quant Title : SVOA CALIBRATION

TIC Library : C:\DATABASE\NIST11.L
 TIC Integration Parameters: LSCINT.P

 Peak Number 2 (DEL) Alkane: Straight-Chai... Concentration Rank 22

R.T.	EstConc	Area	Relative to ISTD	R.T.
7.02	3.40 ng/ul	176422	1,4-Dichlorobenzene-d4	7.38

Hit#	of	Tentative ID	MW	MolForm	CAS#	Qual
1	5	Decane	142	C10H22	000124-18-5	90
2		Decane	142	C10H22	000124-18-5	90
3		Undecane	156	C11H24	001120-21-4	83
4		Tridecane	184	C13H28	000629-50-5	83
5		Decane	142	C10H22	000124-18-5	78



Data Path : Z:\SVOASRV\HPCHEM1\BNA M\DATA\BM062320\
 Data File : BM026523.D
 Acq On : 24 Jun 2020 05:55
 Operator : JU/CG
 Sample : L3027-04
 Misc :
 ALS Vial : 33 Sample Multiplier: 1

Instrument :
 BNA_M
 ClientSampleId :
 BG2K8

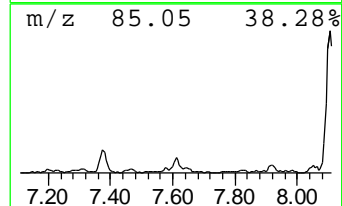
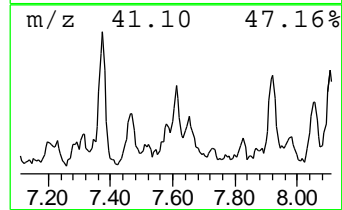
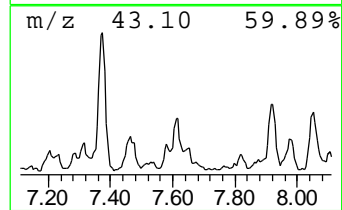
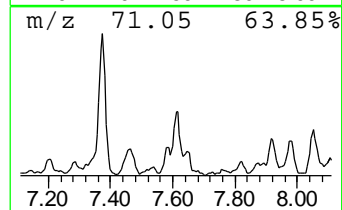
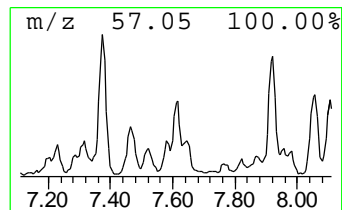
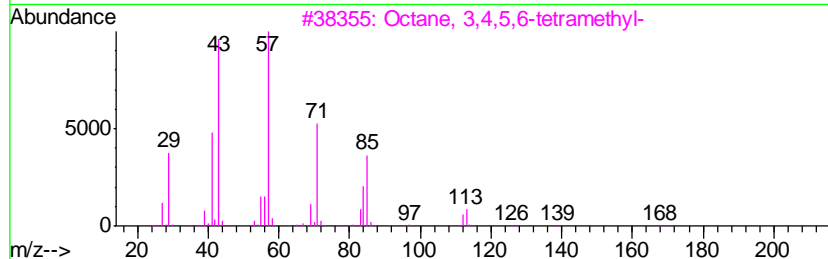
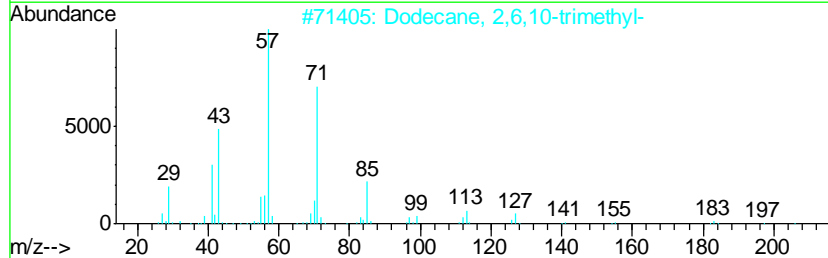
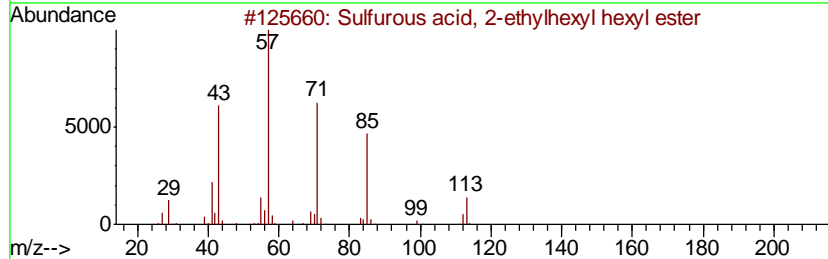
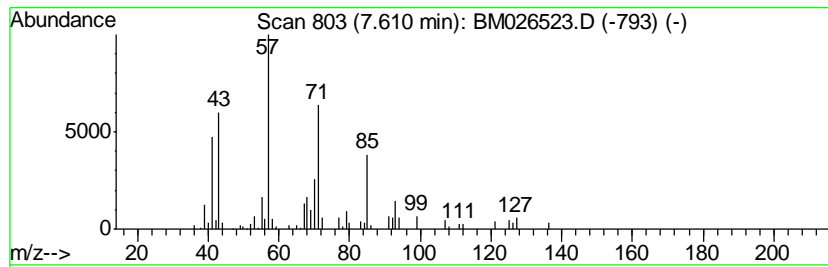
Quant Method : Z:\SVOASRV\HPCHEM1\BNA_M\METHODS\SOM-EPA-BM061220MA.M
 Quant Title : SVOA CALIBRATION

TIC Library : C:\DATABASE\NIST11.L
 TIC Integration Parameters: LSCINT.P

 Peak Number 3 Sulfurous acid, 2-ethylhexy... Concentration Rank 28

R.T.	EstConc	Area	Relative to ISTD	R.T.
7.61	2.50 ng/ul	129478	1,4-Dichlorobenzene-d4	7.38

Hit#	of	Tentative ID	MW	MolForm	CAS#	Qual
1	5	Sulfurous acid, 2-ethylhexyl hex...	278	C14H30O3S	1000309-20-2	53
2		Dodecane, 2,6,10-trimethyl-	212	C15H32	003891-98-3	50
3		Octane, 3,4,5,6-tetramethyl-	170	C12H26	062185-21-1	50
4		Dodecane, 2,7,10-trimethyl-	212	C15H32	074645-98-0	47
5		1,3-Dimethylcyclopentanol	114	C7H14O	019550-46-0	47



Data Path : Z:\SVOASRV\HPCHEM1\BNA M\DATA\BM062320\
 Data File : BM026523.D
 Acq On : 24 Jun 2020 05:55
 Operator : JU/CG
 Sample : L3027-04
 Misc :
 ALS Vial : 33 Sample Multiplier: 1

Instrument :
 BNA_M
 ClientSampleID :
 BG2K8

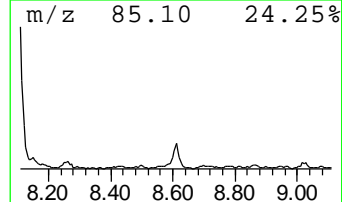
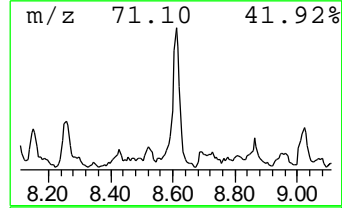
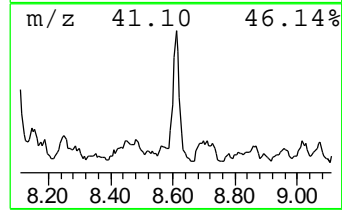
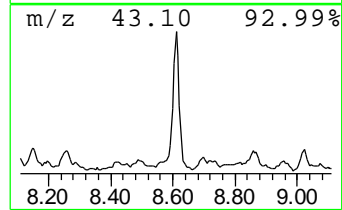
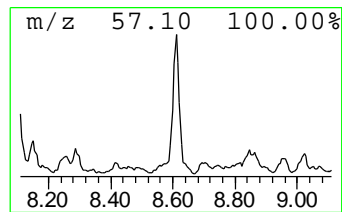
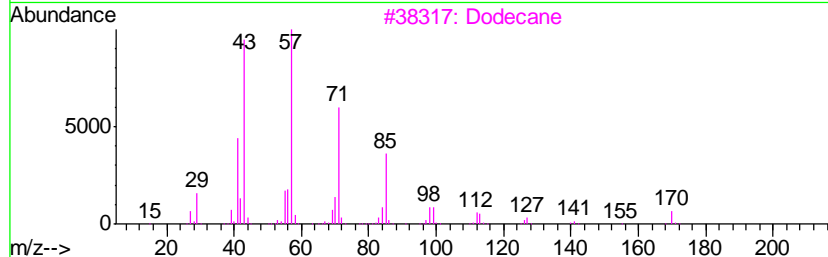
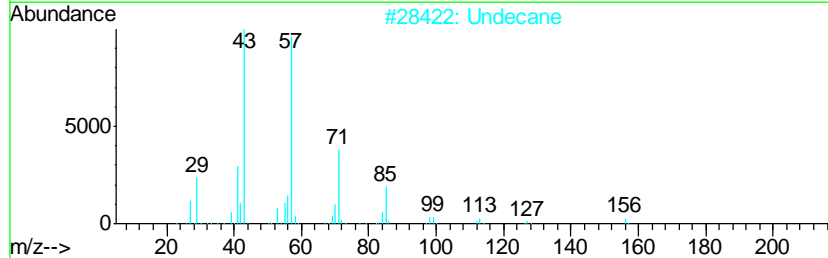
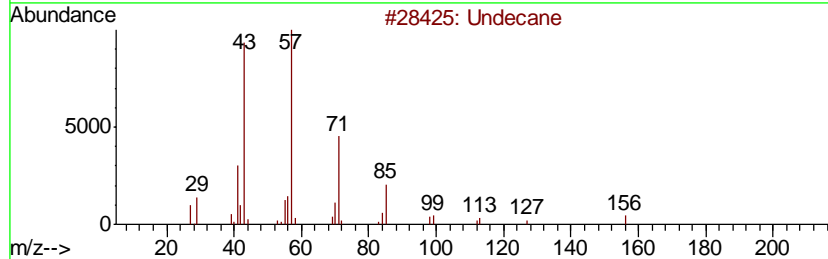
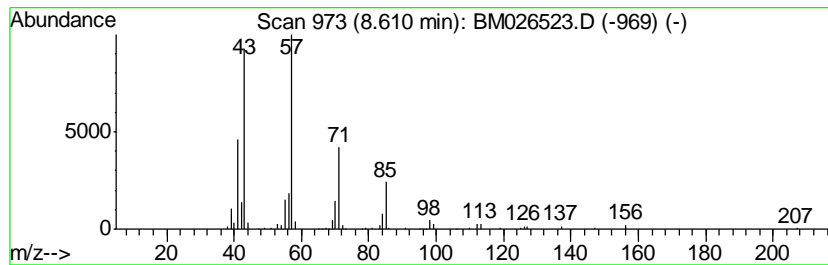
Quant Method : Z:\SVOASRV\HPCHEM1\BNA_M\METHODS\SOM-EPA-BM061220MA.M
 Quant Title : SVOA CALIBRATION

TIC Library : C:\DATABASE\NIST11.L
 TIC Integration Parameters: LSCINT.P

 Peak Number 4 (DEL) Alkane: Straight-Chai... Concentration Rank 23

R.T.	EstConc	Area	Relative to ISTD	R.T.
8.61	3.21 ng/ul	166704	1,4-Dichlorobenzene-d4	7.38

Hit#	of	Tentative ID	MW	MolForm	CAS#	Qual
1	5	Undecane	156	C11H24	001120-21-4	91
2		Undecane	156	C11H24	001120-21-4	91
3		Dodecane	170	C12H26	000112-40-3	83
4		Tridecane	184	C13H28	000629-50-5	83
5		Oxalic acid, isobutyl nonyl ester	272	C15H28O4	1000309-37-4	72



Data Path : Z:\SVOASRV\HPCHEM1\BNA M\DATA\BM062320\
 Data File : BM026523.D
 Acq On : 24 Jun 2020 05:55
 Operator : JU/CG
 Sample : L3027-04
 Misc :
 ALS Vial : 33 Sample Multiplier: 1

Instrument :
 BNA_M
 ClientSampled :
 BG2K8

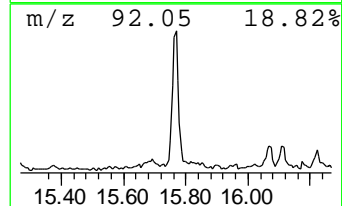
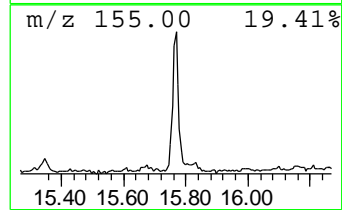
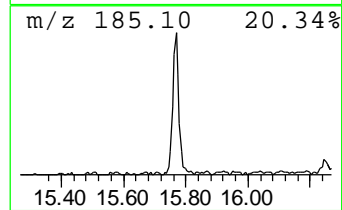
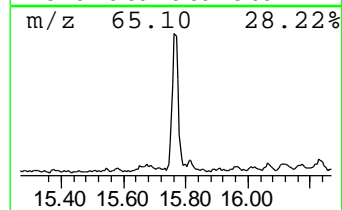
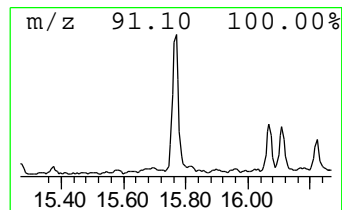
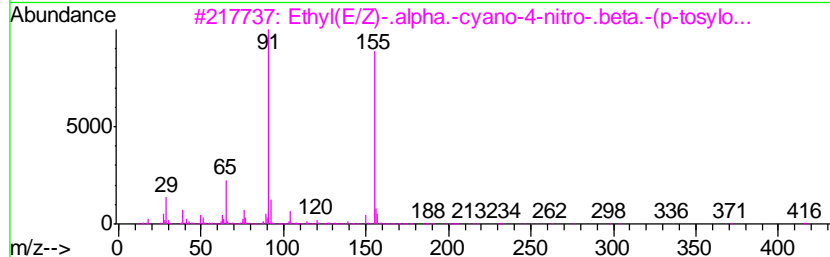
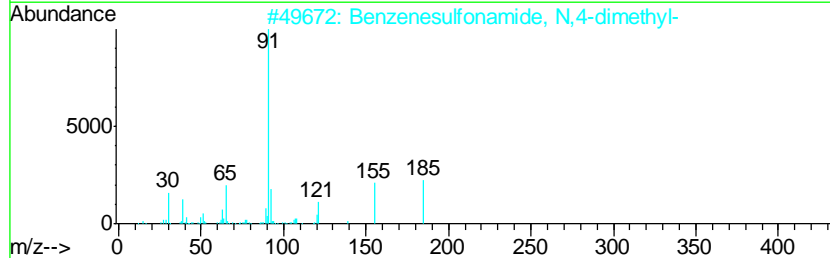
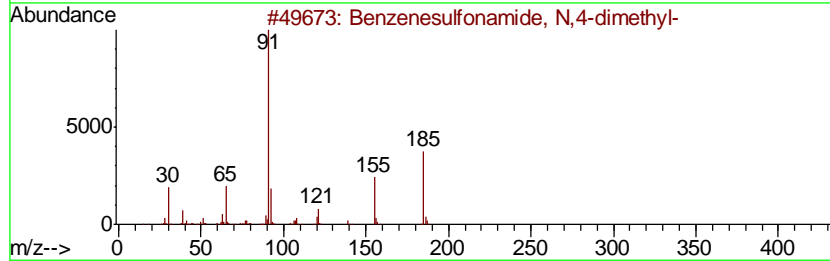
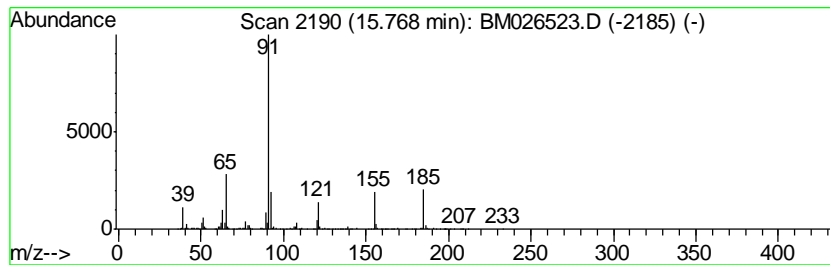
Quant Method : Z:\SVOASRV\HPCHEM1\BNA_M\METHODS\SOM-EPA-BM061220MA.M
 Quant Title : SVOA CALIBRATION

TIC Library : C:\DATABASE\NIST11.L
 TIC Integration Parameters: LSCINT.P

 Peak Number 5 Benzenesulfonamide, N,4-dim... Concentration Rank 27

R.T.	EstConc	Area	Relative to ISTD	R.T.
15.77	2.67 ng/ul	301735	Phenanthrene-d10	16.80

Hit#	of	Tentative ID	MW	MolForm	CAS#	Qual
1	5	Benzenesulfonamide, N,4-dimethyl-	185	C8H11NO2S	000640-61-9	90
2		Benzenesulfonamide, N,4-dimethyl-	185	C8H11NO2S	000640-61-9	80
3		Ethyl(E/Z)-.alpha.-cyano-4-nitro...	416	C19H16N2O7S	1000287-26-8	53
4		Benzene, 1-methyl-2-nitroso-	121	C7H7NO	000611-23-4	49
5		p-Toluenesulfonylacetonitrile	195	C9H9NO2S	005697-44-9	47



Data Path : Z:\SVOASRV\HPCHEM1\BNA M\DATA\BM062320\
 Data File : BM026523.D
 Acq On : 24 Jun 2020 05:55
 Operator : JU/CG
 Sample : L3027-04
 Misc :
 ALS Vial : 33 Sample Multiplier: 1

Instrument :
 BNA_M
 ClientSampled :
 BG2K8

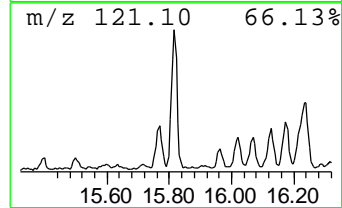
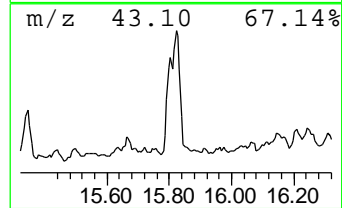
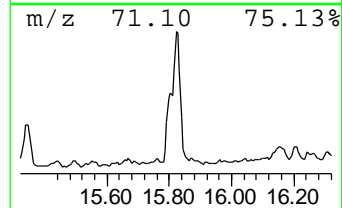
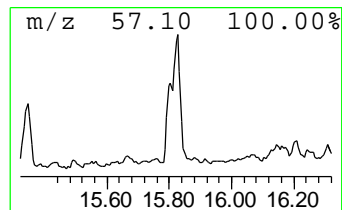
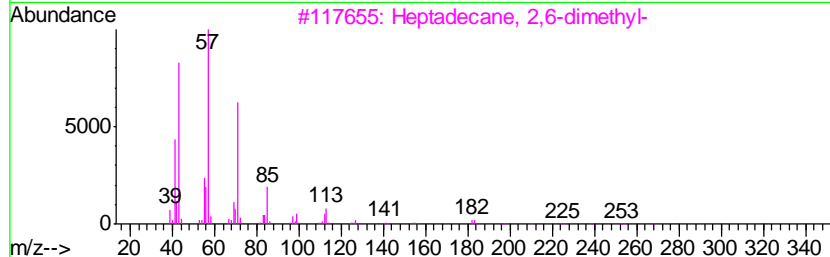
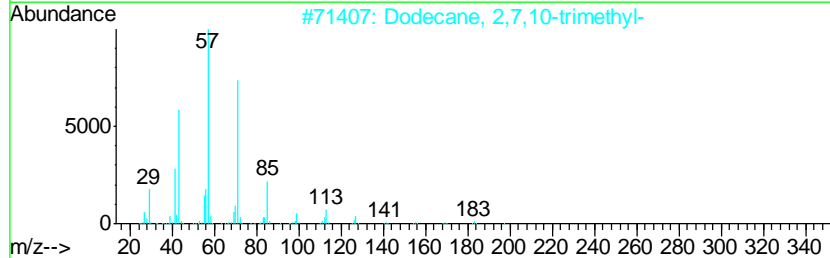
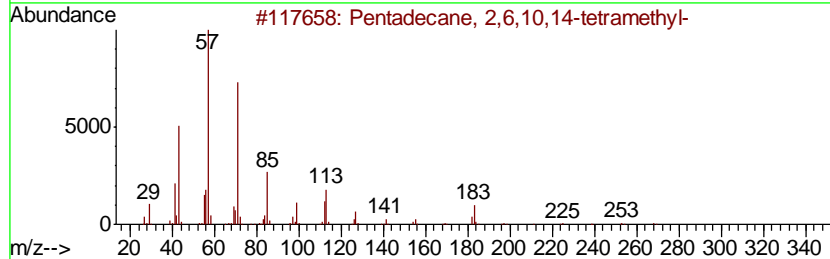
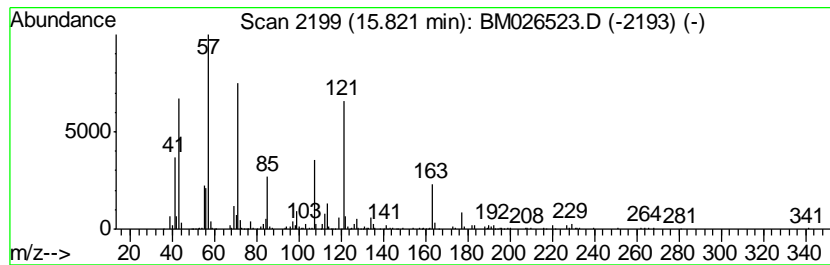
Quant Method : Z:\SVOASRV\HPCHEM1\BNA_M\METHODS\SOM-EPA-BM061220MA.M
 Quant Title : SVOA CALIBRATION

TIC Library : C:\DATABASE\NIST11.L
 TIC Integration Parameters: LSCINT.P

 Peak Number 6 (DEL) Alkane: Straight-Chai... Concentration Rank 19

R.T.	EstConc	Area	Relative to ISTD	R.T.
15.82	5.29 ng/ul	597102	Phenanthrene-d10	16.80

Hit#	of	Tentative ID	MW	MolForm	CAS#	Qual
1	5	Pentadecane, 2,6,10,14-tetramethyl-	268	C19H40	001921-70-6	70
2		Dodecane, 2,7,10-trimethyl-	212	C15H32	074645-98-0	68
3		Heptadecane, 2,6-dimethyl-	268	C19H40	054105-67-8	58
4		Dodecane, 2,6,11-trimethyl-	212	C15H32	031295-56-4	58
5		Sulfurous acid, dodecyl 2-ethylh...	362	C20H42O3S	1000309-19-5	49



Data Path : Z:\SVOASRV\HPCHEM1\BNA M\DATA\BM062320\
 Data File : BM026523.D
 Acq On : 24 Jun 2020 05:55
 Operator : JU/CG
 Sample : L3027-04
 Misc :
 ALS Vial : 33 Sample Multiplier: 1

Instrument :
 BNA_M
 ClientSampleID :
 BG2K8

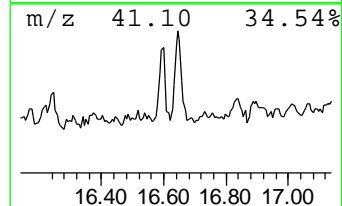
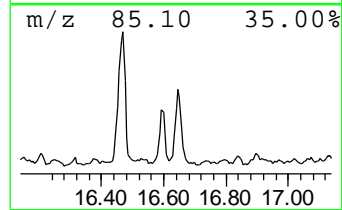
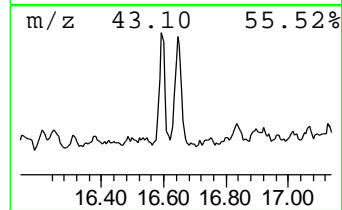
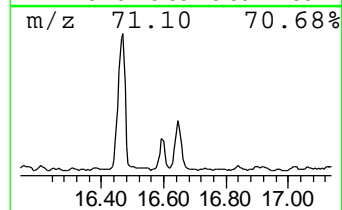
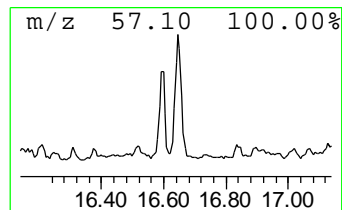
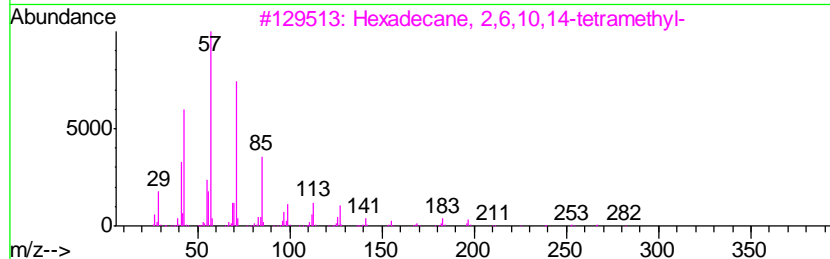
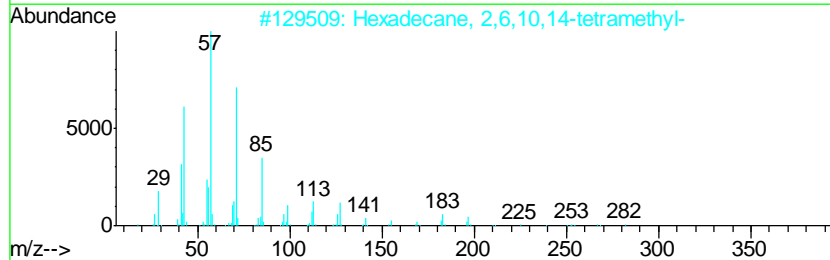
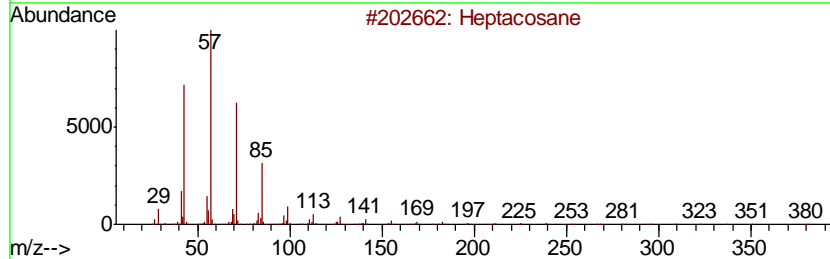
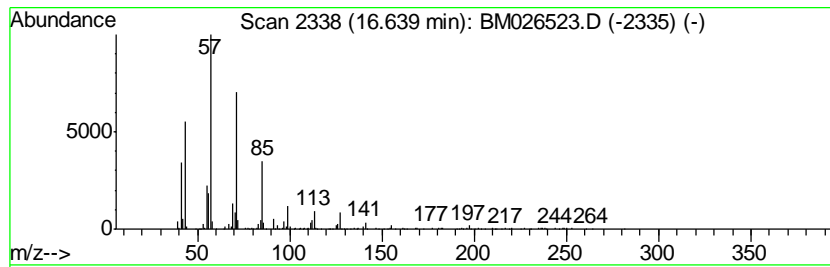
Quant Method : Z:\SVOASRV\HPCHEM1\BNA_M\METHODS\SOM-EPA-BM061220MA.M
 Quant Title : SVOA CALIBRATION

TIC Library : C:\DATABASE\NIST11.L
 TIC Integration Parameters: LSCINT.P

 Peak Number 7 (DEL) Alkane: Straight-Chai... Concentration Rank 29

R.T.	EstConc	Area	Relative to ISTD	R.T.
16.64	2.47 ng/ul	278951	Phenanthrene-d10	16.80

Hit#	of	Tentative ID	MW	MolForm	CAS#	Qual
1	5	Heptacosane	380	C27H56	000593-49-7	91
2		Hexadecane, 2,6,10,14-tetramethyl-	282	C20H42	000638-36-8	90
3		Hexadecane, 2,6,10,14-tetramethyl-	282	C20H42	000638-36-8	87
4		Dodecane, 2,7,10-trimethyl-	212	C15H32	074645-98-0	86
5		Dodecane, 2,6,11-trimethyl-	212	C15H32	031295-56-4	86



Data Path : Z:\SVOASRV\HPCHEM1\BNA M\DATA\BM062320\
 Data File : BM026523.D
 Acq On : 24 Jun 2020 05:55
 Operator : JU/CG
 Sample : L3027-04
 Misc :
 ALS Vial : 33 Sample Multiplier: 1

Instrument :
 BNA_M
 ClientSampled :
 BG2K8

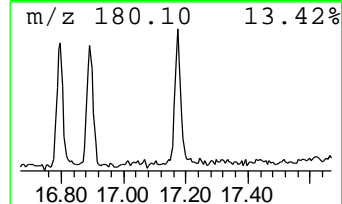
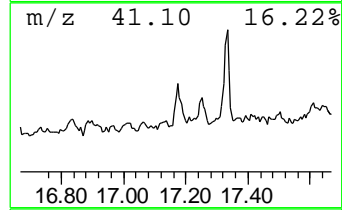
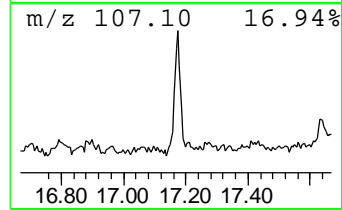
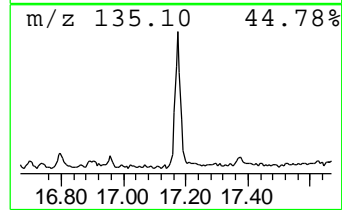
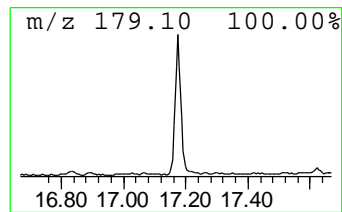
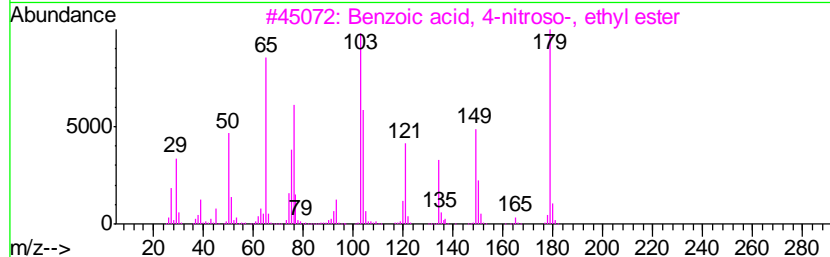
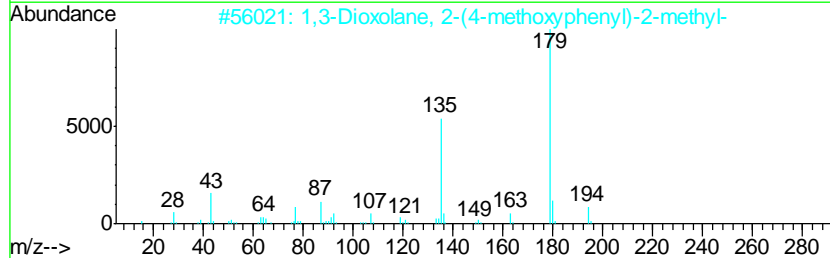
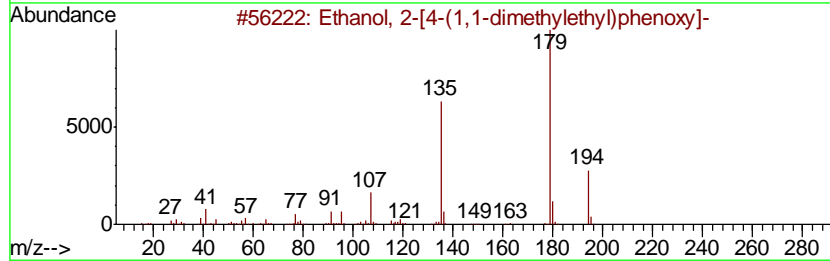
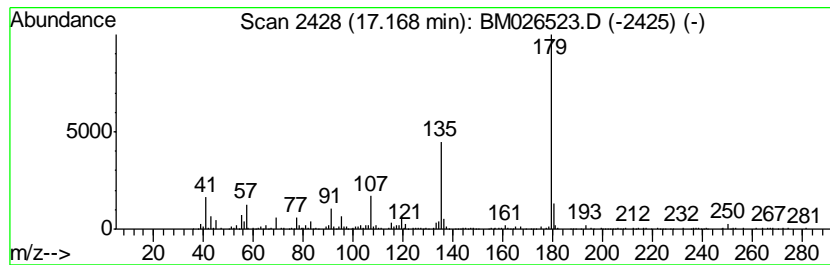
Quant Method : Z:\SVOASRV\HPCHEM1\BNA_M\METHODS\SOM-EPA-BM061220MA.M
 Quant Title : SVOA CALIBRATION

TIC Library : C:\DATABASE\NIST11.L
 TIC Integration Parameters: LSCINT.P

 Peak Number 8 Ethanol, 2-[4-(1,1-dimethyl... Concentration Rank 26

R.T.	EstConc	Area	Relative to ISTD	R.T.
17.17	2.73 ng/ul	307997	Phenanthrene-d10	16.80

Hit#	of	Tentative ID	MW	MolForm	CAS#	Qual
1	5	Ethanol, 2-[4-(1,1-dimethylethyl...]	194	C12H18O2	000713-46-2	78
2		1,3-Dioxolane, 2-(4-methoxypheny...]	194	C11H14O3	036881-00-2	72
3		Benzoic acid, 4-nitroso-, ethyl ...]	179	C9H9NO3	007476-79-1	55
4		2H-1-Benzopyran, 3,4,4a,5,6,8a-h...]	194	C13H22O	041678-32-4	40
5		[2-(4-Methoxy-phenyl)-[1,3]dioxo...]	238	C12H14O5	1000193-22-2	40



Data Path : Z:\SVOASRV\HPCHEM1\BNA M\DATA\BM062320\
 Data File : BM026523.D
 Acq On : 24 Jun 2020 05:55
 Operator : JU/CG
 Sample : L3027-04
 Misc :
 ALS Vial : 33 Sample Multiplier: 1

Instrument :
 BNA_M
 ClientSampleID :
 BG2K8

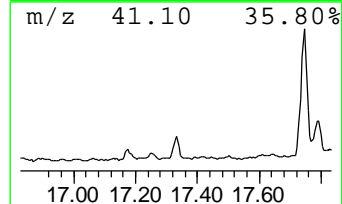
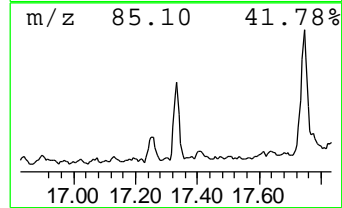
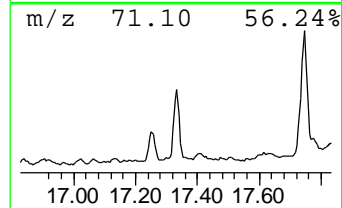
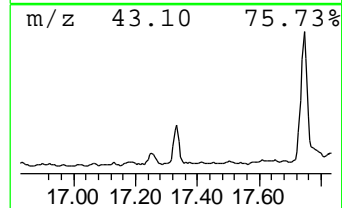
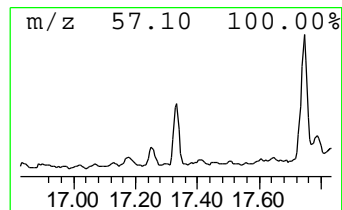
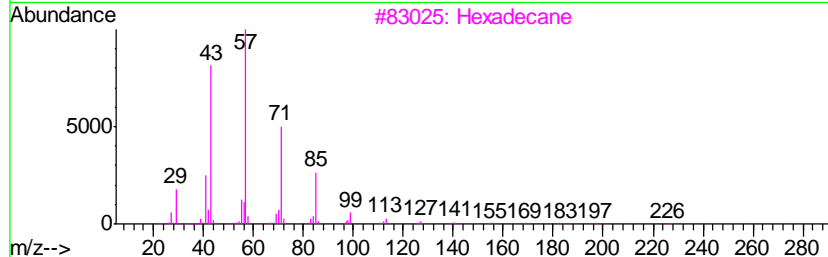
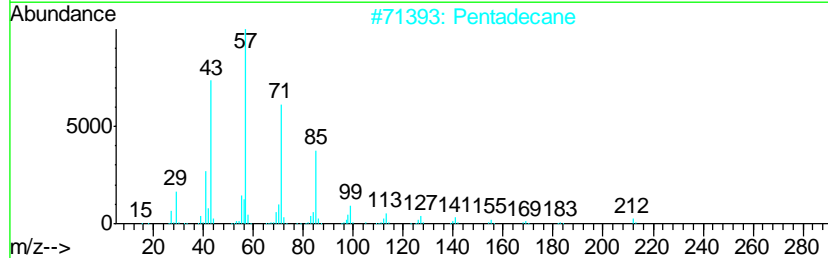
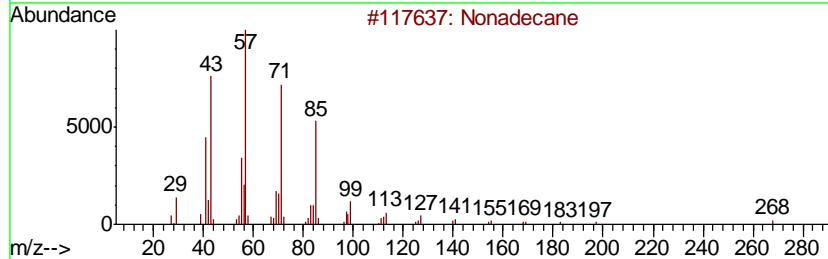
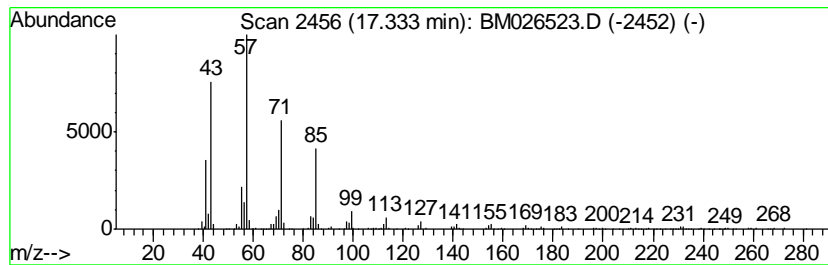
Quant Method : Z:\SVOASRV\HPCHEM1\BNA_M\METHODS\SOM-EPA-BM061220MA.M
 Quant Title : SVOA CALIBRATION

TIC Library : C:\DATABASE\NIST11.L
 TIC Integration Parameters: LSCINT.P

 Peak Number 9 (DEL) Alkane: Straight-Chai... Concentration Rank 25

R.T.	EstConc	Area	Relative to ISTD	R.T.
17.33	2.85 ng/ul	321387	Phenanthrene-d10	16.80

Hit#	of	Tentative ID	MW	MolForm	CAS#	Qual
1	5	Nonadecane	268	C19H40	000629-92-5	94
2		Pentadecane	212	C15H32	000629-62-9	91
3		Hexadecane	226	C16H34	000544-76-3	90
4		Heptadecane	240	C17H36	000629-78-7	90
5		Tetradecane	198	C14H30	000629-59-4	80



Data Path : Z:\SVOASRV\HPCHEM1\BNA M\DATA\BM062320\
 Data File : BM026523.D
 Acq On : 24 Jun 2020 05:55
 Operator : JU/CG
 Sample : L3027-04
 Misc :
 ALS Vial : 33 Sample Multiplier: 1

Instrument :
 BNA_M
 ClientSampleID :
 BG2K8

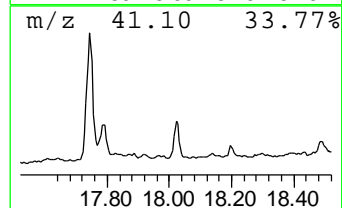
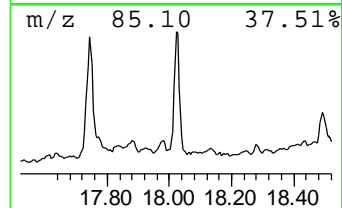
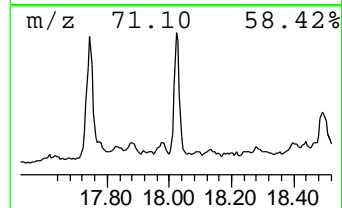
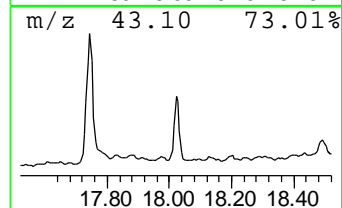
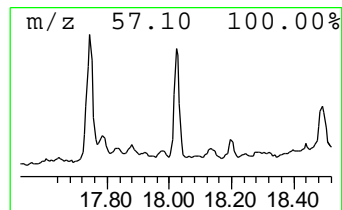
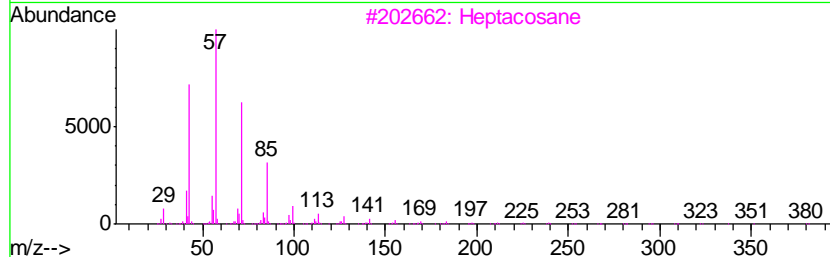
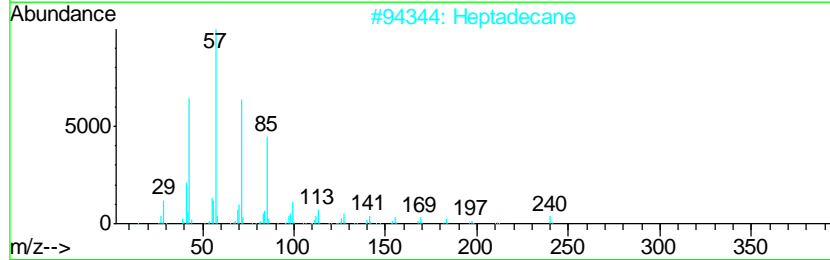
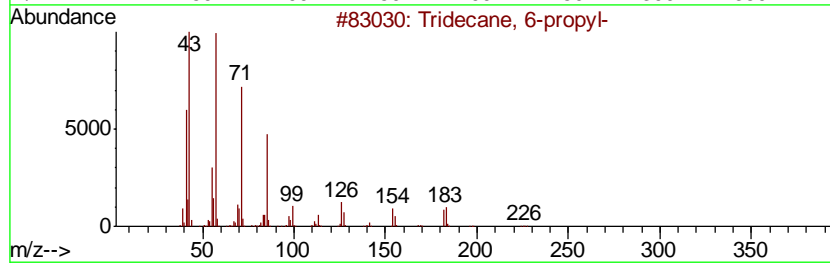
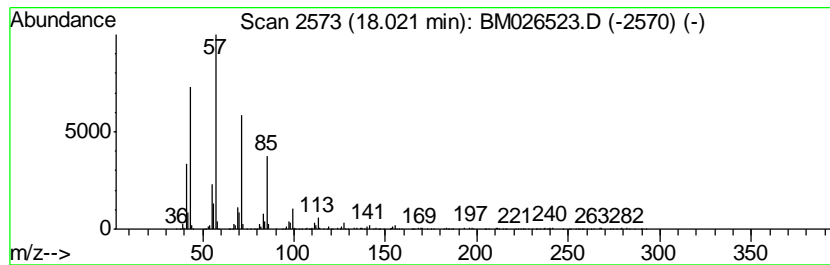
Quant Method : Z:\SVOASRV\HPCHEM1\BNA_M\METHODS\SOM-EPA-BM061220MA.M
 Quant Title : SVOA CALIBRATION

TIC Library : C:\DATABASE\NIST11.L
 TIC Integration Parameters: LSCINT.P

 Peak Number 10 (DEL) Alkane: Straight-Chai... Concentration Rank 20

R.T.	EstConc	Area	Relative to ISTD	R.T.
18.02	4.64 ng/ul	523941	Phenanthrene-d10	16.80

Hit#	of	Tentative ID	MW	MolForm	CAS#	Qual
1	5	Tridecane, 6-propyl-	226	C16H34	055045-10-8	94
2		Heptadecane	240	C17H36	000629-78-7	93
3		Heptacosane	380	C27H56	000593-49-7	91
4		Tridecane, 7-hexyl-	268	C19H40	007225-66-3	91
5		Octacosane	394	C28H58	000630-02-4	91



Data Path : Z:\SVOASRV\HPCHEM1\BNA M\DATA\BM062320\
 Data File : BM026523.D
 Acq On : 24 Jun 2020 05:55
 Operator : JU/CG
 Sample : L3027-04
 Misc :
 ALS Vial : 33 Sample Multiplier: 1

Instrument :
 BNA_M
 ClientSampled :
 BG2K8

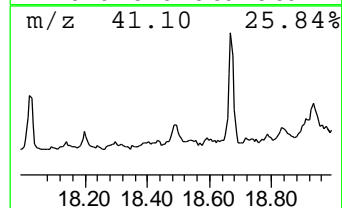
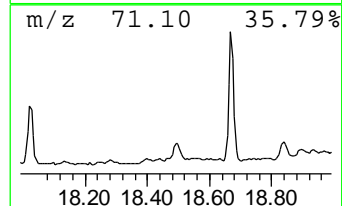
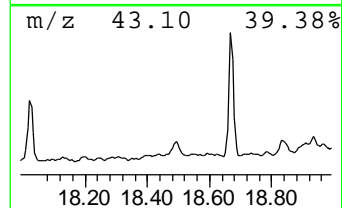
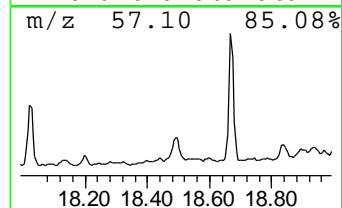
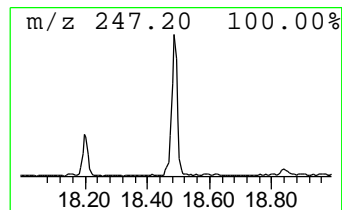
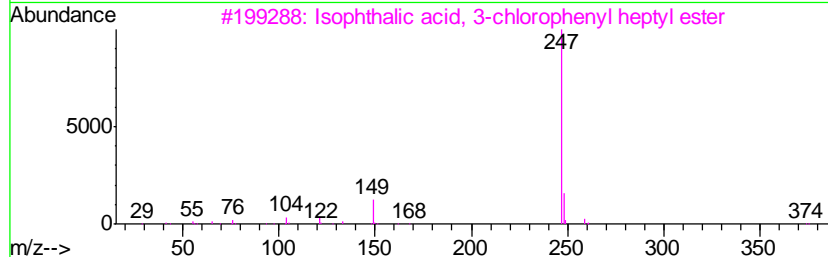
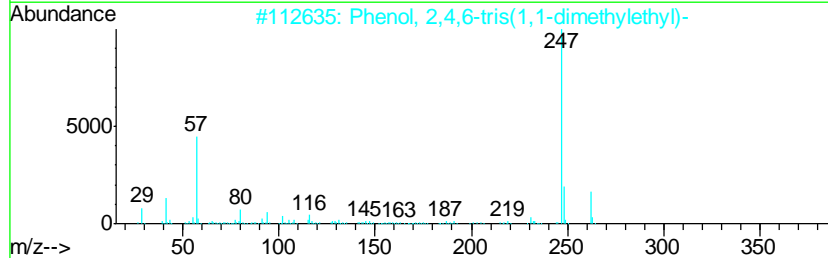
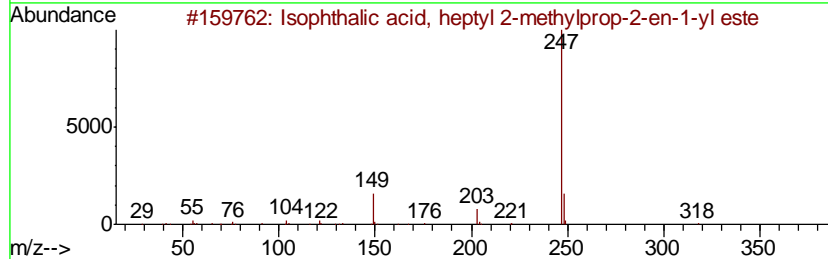
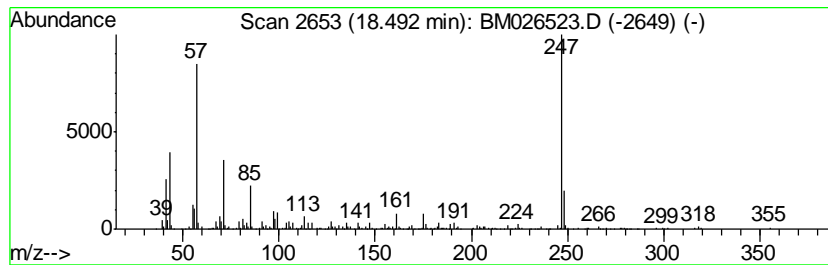
Quant Method : Z:\SVOASRV\HPCHEM1\BNA_M\METHODS\SOM-EPA-BM061220MA.M
 Quant Title : SVOA CALIBRATION

TIC Library : C:\DATABASE\NIST11.L
 TIC Integration Parameters: LSCINT.P

 Peak Number 11 unknown-01 Concentration Rank 24

R.T.	EstConc	Area	Relative to ISTD	R.T.
18.49	2.86 ng/ul	322729	Phenanthrene-d10	16.80

Hit#	of	Tentative ID	MW	MolForm	CAS#	Qual
1	5	Isophthalic acid, heptyl 2-methy...	318	C19H26O4	1000343-95-0	49
2		Phenol, 2,4,6-tris(1,1-dimethyle...	262	C18H30O	000732-26-3	47
3		Isophthalic acid, 3-chlorophenyl...	374	C21H23ClO4	1000344-60-6	43
4		Isophthalic acid, 3,5-difluoroph...	376	C21H22F2O4	1000344-37-4	43
5		Sulfurous acid, butyl hexadecyl ...	362	C20H42O3S	1000309-18-3	25



Data Path : Z:\SVOASRV\HPCHEM1\BNA M\DATA\BM062320\
 Data File : BM026523.D
 Acq On : 24 Jun 2020 05:55
 Operator : JU/CG
 Sample : L3027-04
 Misc :
 ALS Vial : 33 Sample Multiplier: 1

Instrument :
 BNA_M
 ClientSampleID :
 BG2K8

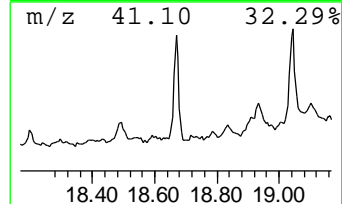
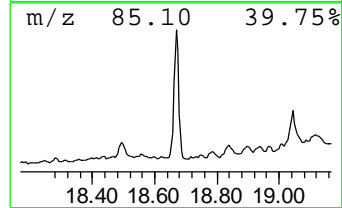
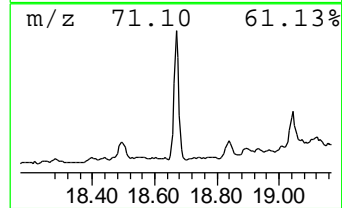
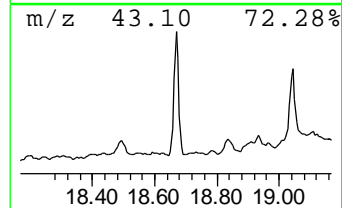
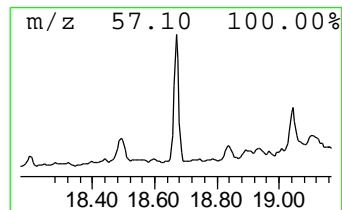
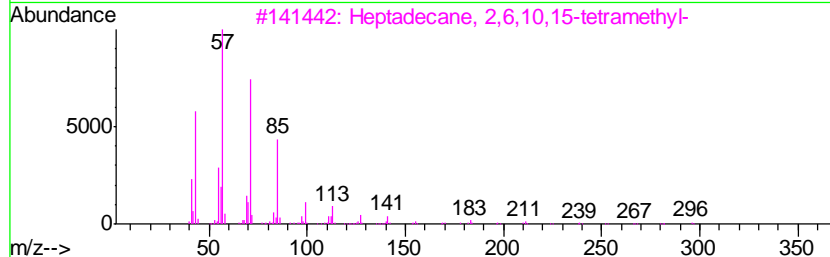
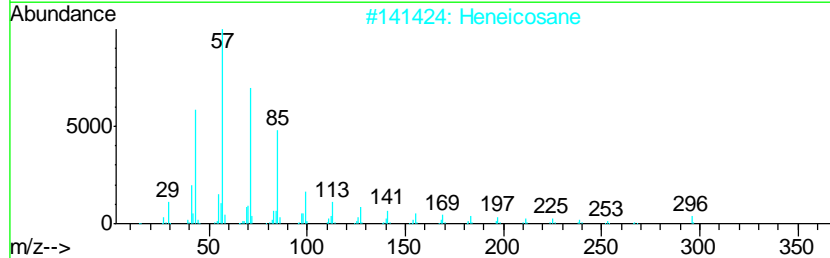
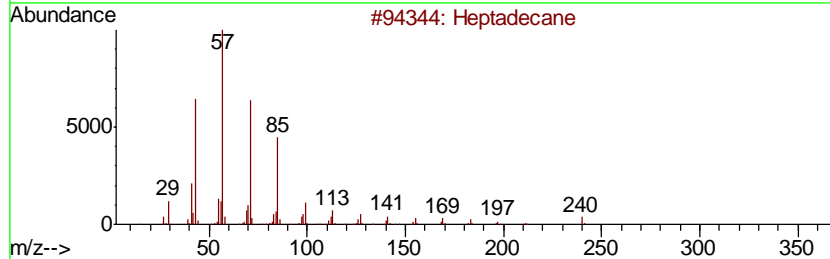
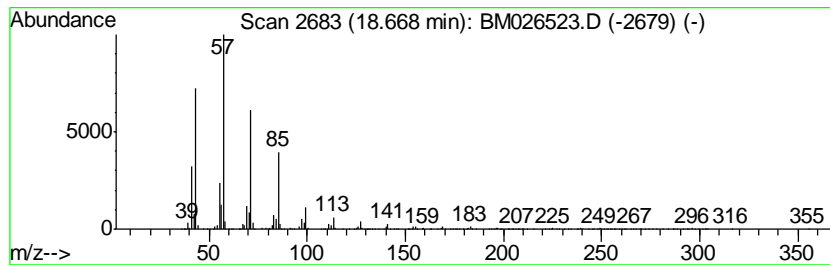
Quant Method : Z:\SVOASRV\HPCHEM1\BNA_M\METHODS\SOM-EPA-BM061220MA.M
 Quant Title : SVOA CALIBRATION

TIC Library : C:\DATABASE\NIST11.L
 TIC Integration Parameters: LSCINT.P

 Peak Number 12 (DEL) Alkane: Straight-Chai... Concentration Rank 17

R.T.	EstConc	Area	Relative to ISTD	R.T.
18.67	8.67 ng/ul	978491	Phenanthrene-d10	16.80

Hit#	of	Tentative ID	MW	MolForm	CAS#	Qual
1	5	Heptadecane	240	C17H36	000629-78-7	95
2		Heneicosane	296	C21H44	000629-94-7	93
3		Heptadecane, 2,6,10,15-tetramethyl-	296	C21H44	054833-48-6	93
4		Heptacosane	380	C27H56	000593-49-7	91
5		Tridecane, 1-iodo-	310	C13H27I	035599-77-0	91



Data Path : Z:\SVOASRV\HPCHEM1\BNA M\DATA\BM062320\
 Data File : BM026523.D
 Acq On : 24 Jun 2020 05:55
 Operator : JU/CG
 Sample : L3027-04
 Misc :
 ALS Vial : 33 Sample Multiplier: 1

Instrument :
 BNA_M
 ClientSampleId :
 BG2K8

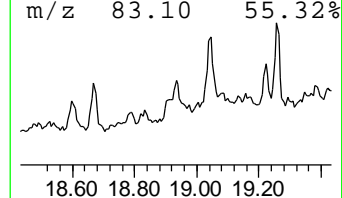
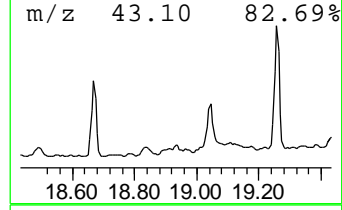
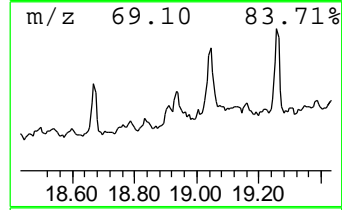
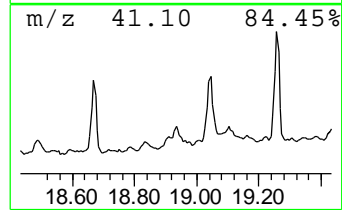
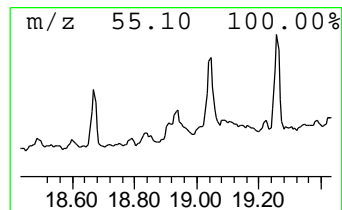
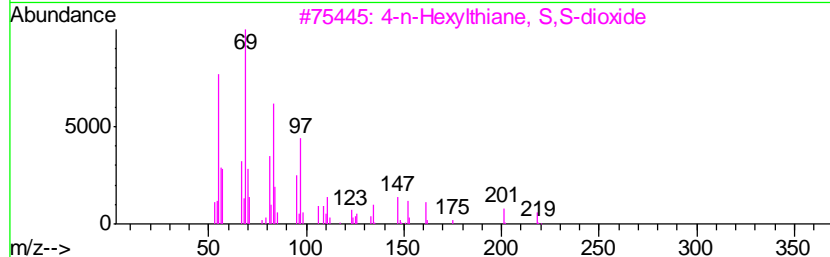
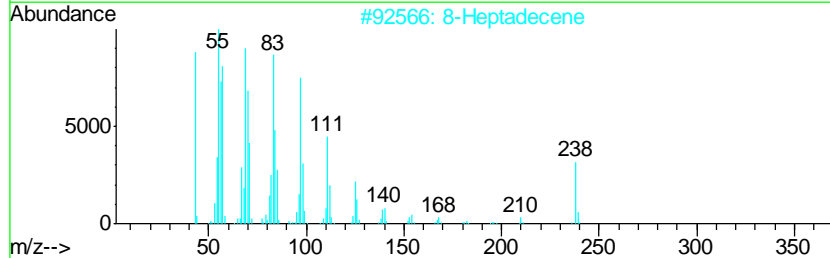
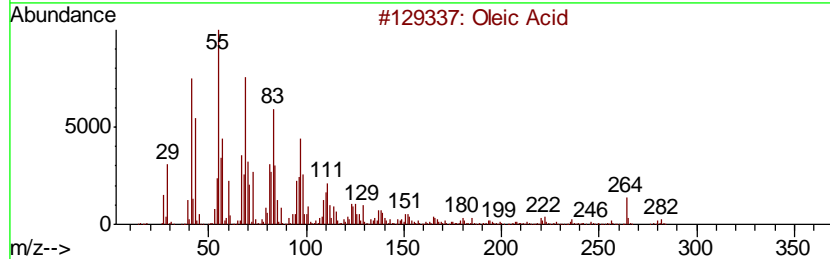
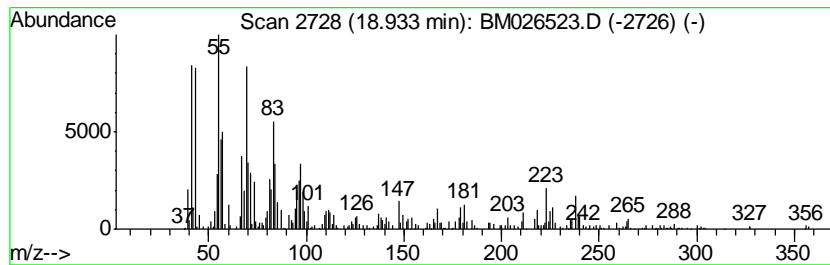
Quant Method : Z:\SVOASRV\HPCHEM1\BNA_M\METHODS\SOM-EPA-BM061220MA.M
 Quant Title : SVOA CALIBRATION

TIC Library : C:\DATABASE\NIST11.L
 TIC Integration Parameters: LSCINT.P

 Peak Number 13 Oleic Acid Concentration Rank 21

R.T.	EstConc	Area	Relative to ISTD	R.T.
18.93	3.75 ng/ul	379056	Chrysene-d12	21.00

Hit#	of	Tentative ID	MW	MolForm	CAS#	Qual
1	5	Oleic Acid	282	C18H34O2	000112-80-1	87
2		8-Heptadecene	238	C17H34	002579-04-6	70
3		4-n-Hexylthiane, S,S-dioxide	218	C11H22O2S	070928-52-8	60
4		1-Pentadecene	210	C15H30	013360-61-7	55
5		3-Hexadecene, (Z)-	224	C16H32	034303-81-6	53



Data Path : Z:\SVOASRV\HPCHEM1\BNA M\DATA\BM062320\
 Data File : BM026523.D
 Acq On : 24 Jun 2020 05:55
 Operator : JU/CG
 Sample : L3027-04
 Misc :
 ALS Vial : 33 Sample Multiplier: 1

Instrument :
 BNA_M
 ClientSampleID :
 BG2K8

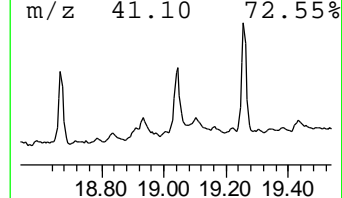
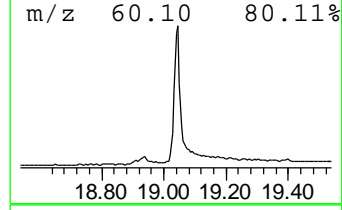
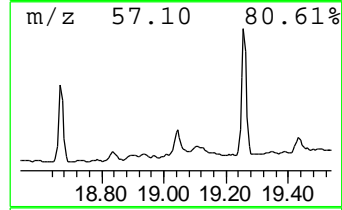
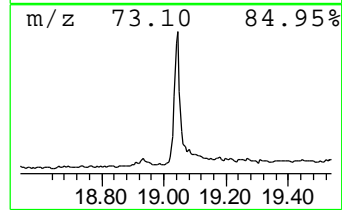
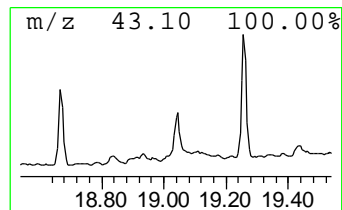
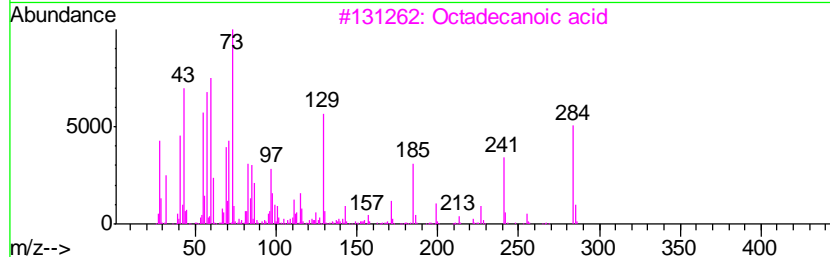
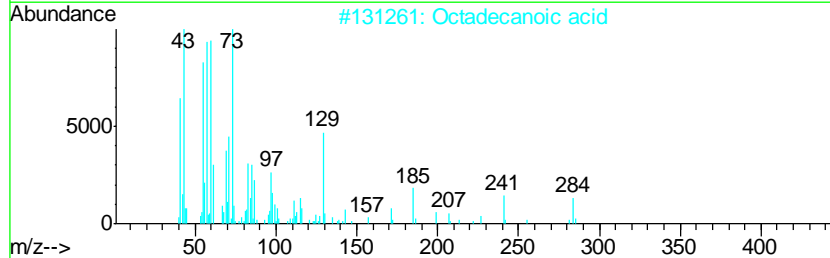
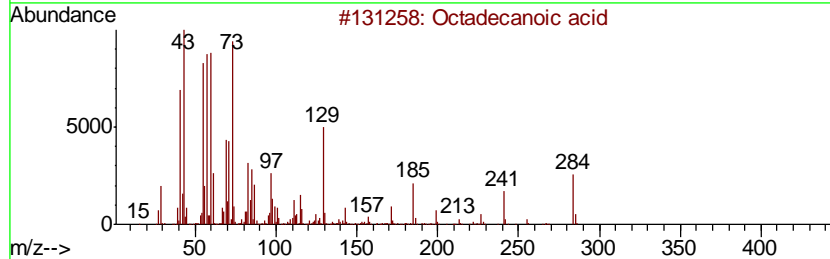
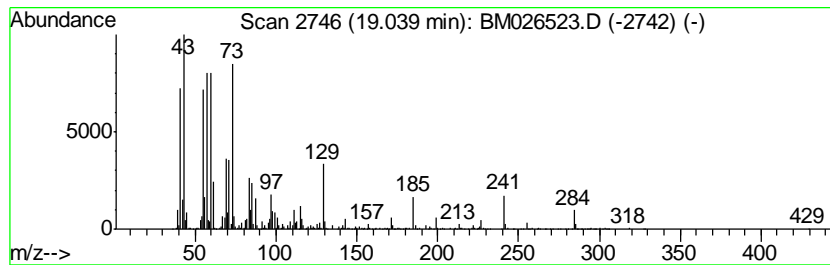
Quant Method : Z:\SVOASRV\HPCHEM1\BNA_M\METHODS\SOM-EPA-BM061220MA.M
 Quant Title : SVOA CALIBRATION

TIC Library : C:\DATABASE\NIST11.L
 TIC Integration Parameters: LSCINT.P

 Peak Number 14 Octadecanoic acid Concentration Rank 15

R.T.	EstConc	Area	Relative to ISTD	R.T.
19.04	12.18 ng/ul	1232700	Chrysene-d12	21.00

Hit#	of	Tentative ID	MW	MolForm	CAS#	Qual
1	5	Octadecanoic acid	284	C18H36O2	000057-11-4	99
2		Octadecanoic acid	284	C18H36O2	000057-11-4	99
3		Octadecanoic acid	284	C18H36O2	000057-11-4	99
4		Octadecanoic acid	284	C18H36O2	000057-11-4	99
5		Octadecanoic acid	284	C18H36O2	000057-11-4	95



Data Path : Z:\SVOASRV\HPCHEM1\BNA M\DATA\BM062320\
 Data File : BM026523.D
 Acq On : 24 Jun 2020 05:55
 Operator : JU/CG
 Sample : L3027-04
 Misc :
 ALS Vial : 33 Sample Multiplier: 1

Instrument :
 BNA_M
 ClientSampleId :
 BG2K8

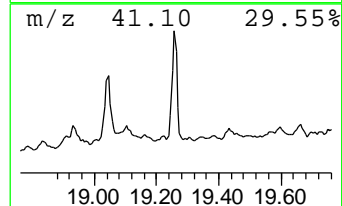
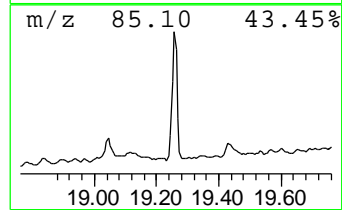
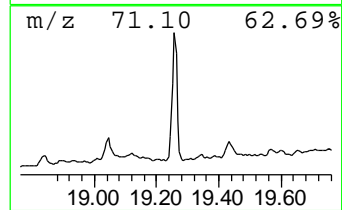
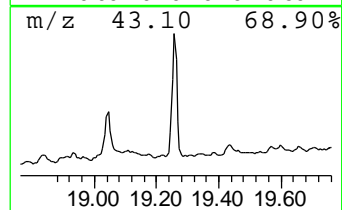
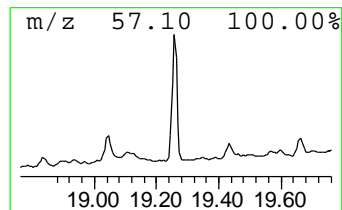
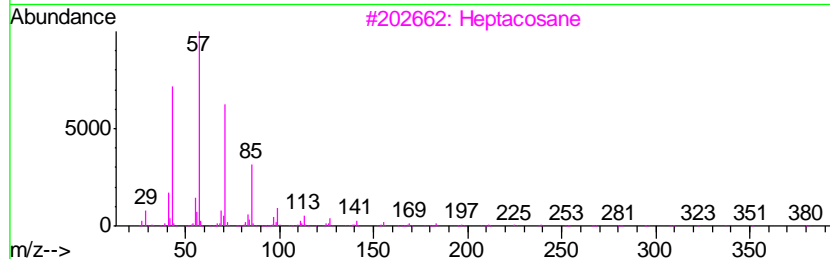
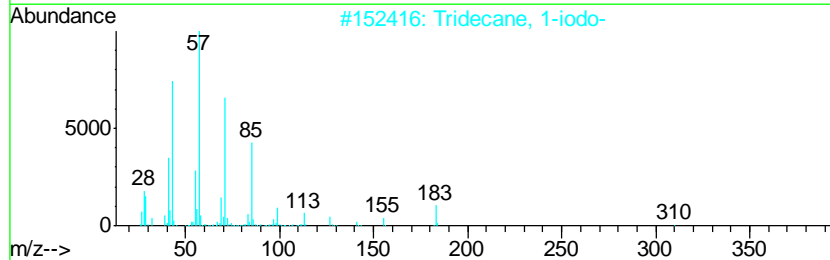
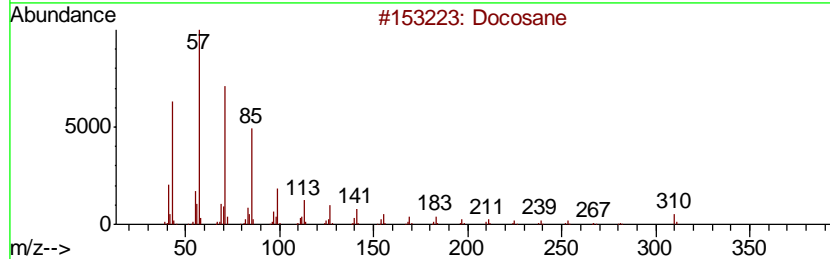
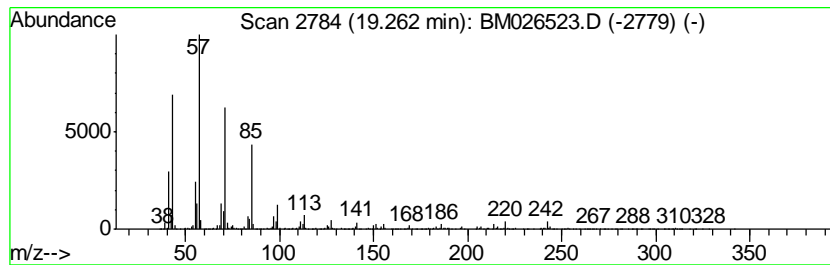
Quant Method : Z:\SVOASRV\HPCHEM1\BNA_M\METHODS\SOM-EPA-BM061220MA.M
 Quant Title : SVOA CALIBRATION

TIC Library : C:\DATABASE\NIST11.L
 TIC Integration Parameters: LSCINT.P

 Peak Number 15 (DEL) Alkane: Straight-Chai... Concentration Rank 11

R.T.	EstConc	Area	Relative to ISTD	R.T.
19.26	17.77 ng/ul	1798070	Chrysene-d12	21.00

Hit#	of	Tentative ID	MW	MolForm	CAS#	Qual
1	5	Docosane	310	C22H46	000629-97-0	96
2		Tridecane, 1-iodo-	310	C13H27I	035599-77-0	93
3		Heptacosane	380	C27H56	000593-49-7	91
4		Heneicosane	296	C21H44	000629-94-7	91
5		Docosane	310	C22H46	000629-97-0	91



Data Path : Z:\SVOASRV\HPCHEM1\BNA M\DATA\BM062320\
 Data File : BM026523.D
 Acq On : 24 Jun 2020 05:55
 Operator : JU/CG
 Sample : L3027-04
 Misc :
 ALS Vial : 33 Sample Multiplier: 1

Instrument :
 BNA_M
 ClientSampleID :
 BG2K8

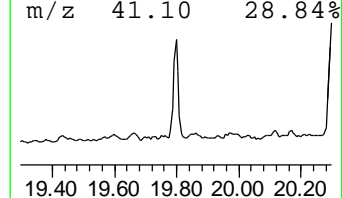
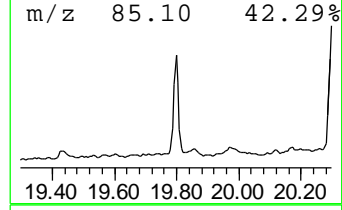
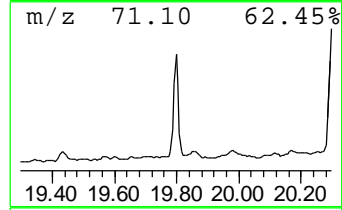
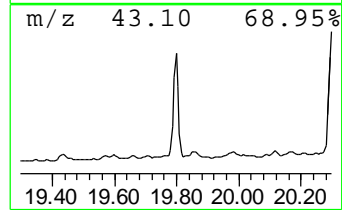
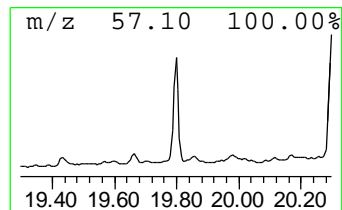
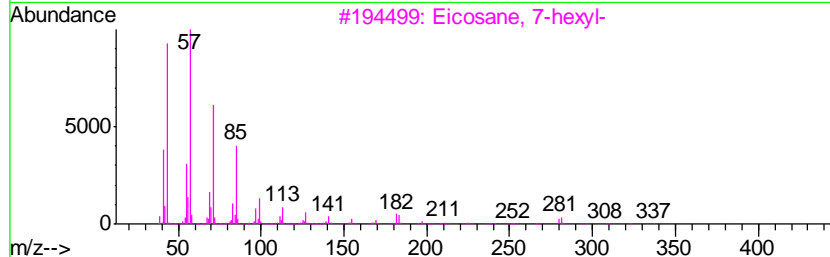
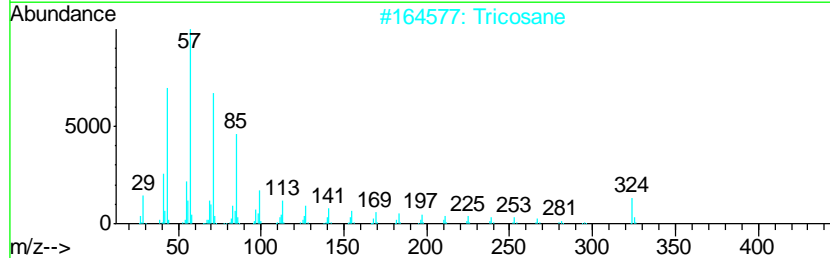
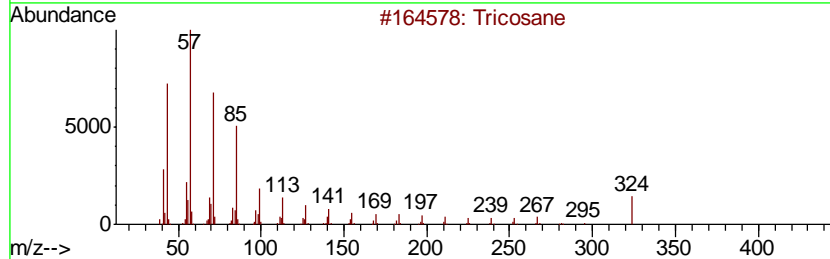
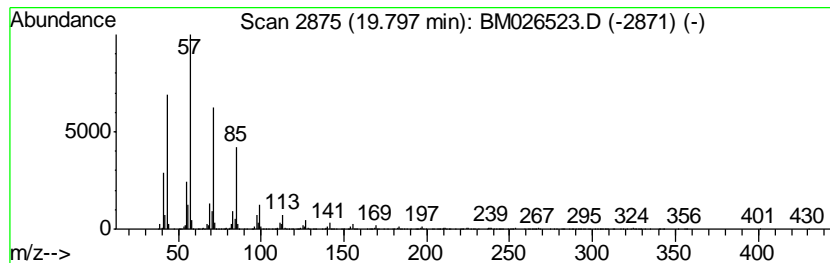
Quant Method : Z:\SVOASRV\HPCHEM1\BNA_M\METHODS\SOM-EPA-BM061220MA.M
 Quant Title : SVOA CALIBRATION

TIC Library : C:\DATABASE\NIST11.L
 TIC Integration Parameters: LSCINT.P

 Peak Number 16 (DEL) Alkane: Straight-Chai... Concentration Rank 9

R.T.	EstConc	Area	Relative to ISTD	R.T.
19.80	23.23 ng/ul	2350110	Chrysene-d12	21.00

Hit#	of	Tentative ID	MW	MolForm	CAS#	Qual
1	5	Tricosane	324	C23H48	000638-67-5	95
2		Tricosane	324	C23H48	000638-67-5	93
3		Eicosane, 7-hexyl-	366	C26H54	055333-99-8	91
4		Heptacosane	380	C27H56	000593-49-7	91
5		Hexacosane	366	C26H54	000630-01-3	91



Data Path : Z:\SVOASRV\HPCHEM1\BNA M\DATA\BM062320\
 Data File : BM026523.D
 Acq On : 24 Jun 2020 05:55
 Operator : JU/CG
 Sample : L3027-04
 Misc :
 ALS Vial : 33 Sample Multiplier: 1

Instrument :
 BNA_M
 ClientSampled :
 BG2K8

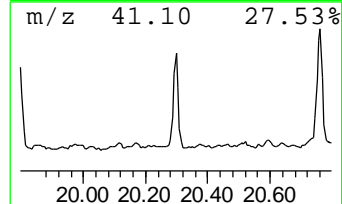
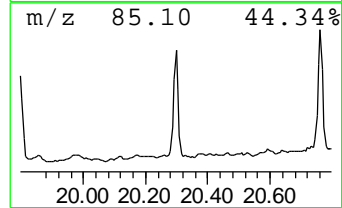
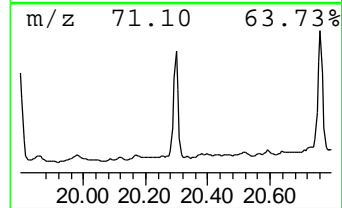
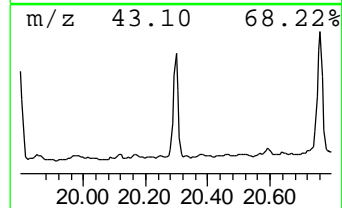
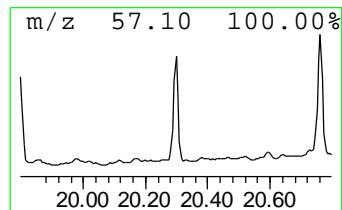
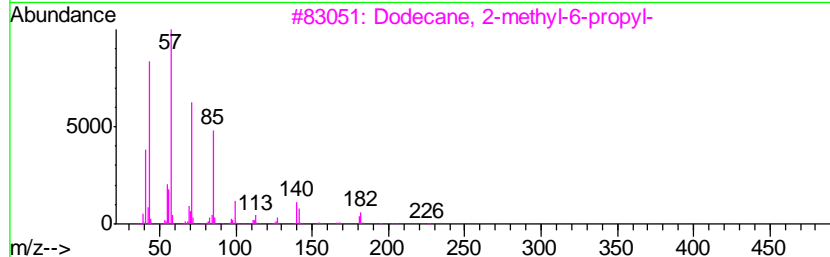
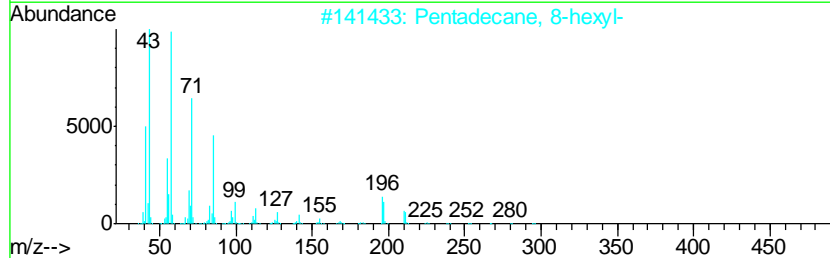
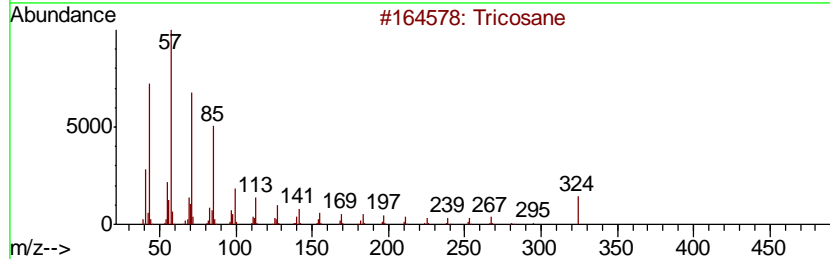
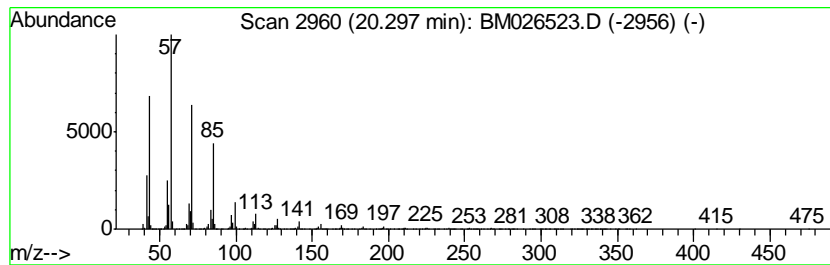
Quant Method : Z:\SVOASRV\HPCHEM1\BNA_M\METHODS\SOM-EPA-BM061220MA.M
 Quant Title : SVOA CALIBRATION

TIC Library : C:\DATABASE\NIST11.L
 TIC Integration Parameters: LSCINT.P

 Peak Number 17 (DEL) Alkane: Straight-Chai... Concentration Rank 5

R.T.	EstConc	Area	Relative to ISTD	R.T.
20.30	27.87 ng/ul	2819590	Chrysene-d12	21.00

Hit#	of	Tentative ID	MW	MolForm	CAS#	Qual
1	5	Tricosane	324	C23H48	000638-67-5	95
2		Pentadecane, 8-hexyl-	296	C21H44	013475-75-7	94
3		Dodecane, 2-methyl-6-propyl-	226	C16H34	055045-08-4	93
4		Heneicosane	296	C21H44	000629-94-7	91
5		1-Iodo-2-methylundecane	296	C12H25I	073105-67-6	91



Data Path : Z:\SVOASRV\HPCHEM1\BNA M\DATA\BM062320\
 Data File : BM026523.D
 Acq On : 24 Jun 2020 05:55
 Operator : JU/CG
 Sample : L3027-04
 Misc :
 ALS Vial : 33 Sample Multiplier: 1

Instrument :
 BNA_M
 ClientSampleId :
 BG2K8

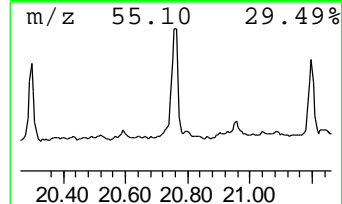
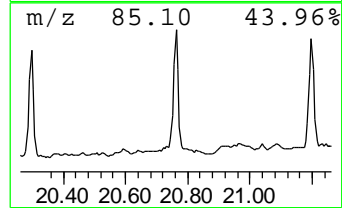
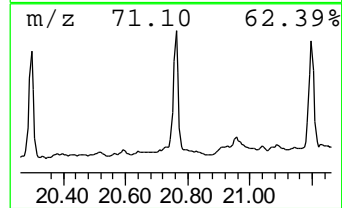
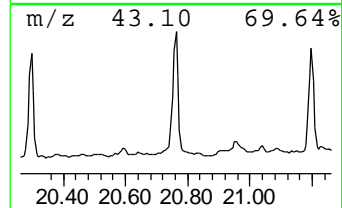
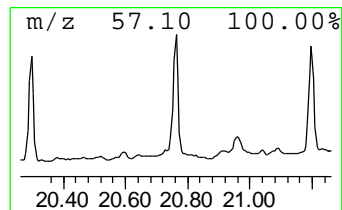
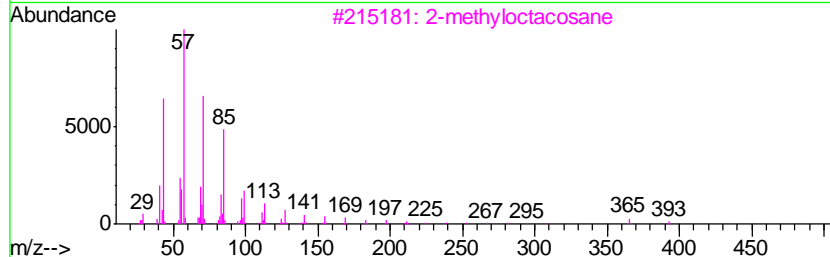
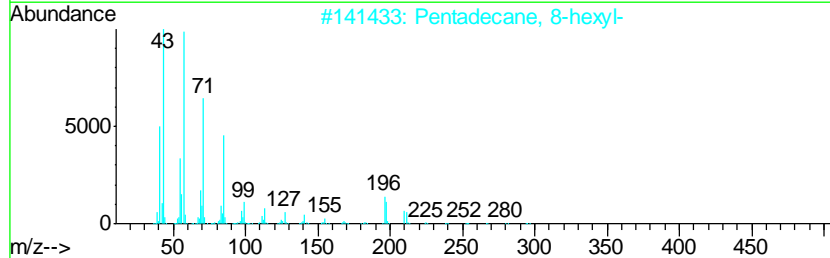
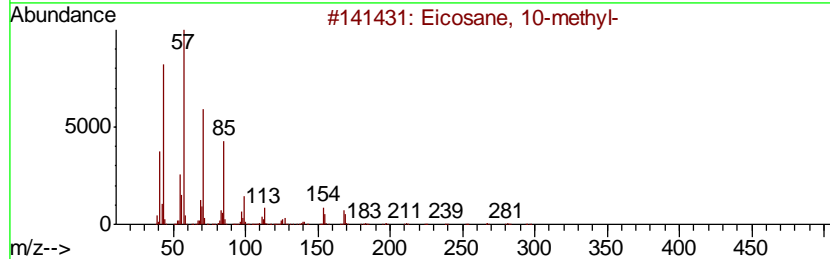
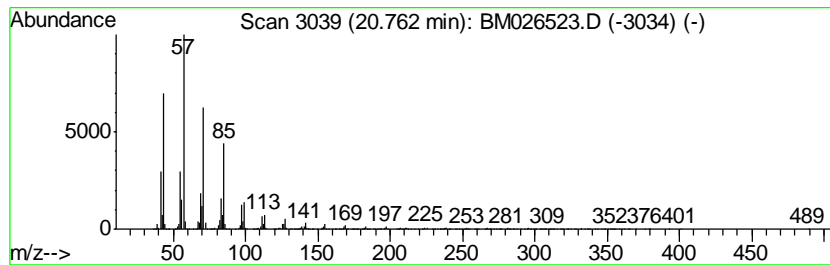
Quant Method : Z:\SVOASRV\HPCHEM1\BNA_M\METHODS\SOM-EPA-BM061220MA.M
 Quant Title : SVOA CALIBRATION

TIC Library : C:\DATABASE\NIST11.L
 TIC Integration Parameters: LSCINT.P

 Peak Number 18 (DEL) Alkane: Straight-Chai... Concentration Rank 2

R.T.	EstConc	Area	Relative to ISTD	R.T.
20.76	39.37 ng/ul	3983210	Chrysene-d12	21.00

Hit#	of	Tentative ID	MW	MolForm	CAS#	Qual
1	5	Eicosane, 10-methyl-	296	C21H44	054833-23-7	93
2		Pentadecane, 8-hexyl-	296	C21H44	013475-75-7	93
3		2-methyloctacosane	408	C29H60	1000376-72-8	91
4		Hexacosane	366	C26H54	000630-01-3	91
5		Tritetracontane	605	C43H88	007098-21-7	91



Data Path : Z:\SVOASRV\HPCHEM1\BNA M\DATA\BM062320\
 Data File : BM026523.D
 Acq On : 24 Jun 2020 05:55
 Operator : JU/CG
 Sample : L3027-04
 Misc :
 ALS Vial : 33 Sample Multiplier: 1

Instrument :
 BNA_M
 ClientSampleID :
 BG2K8

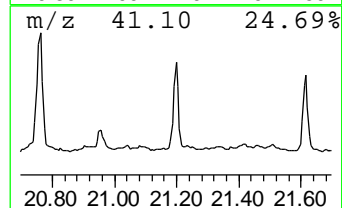
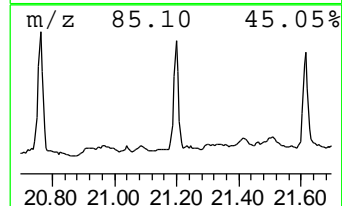
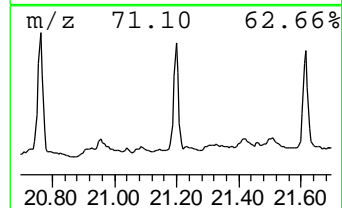
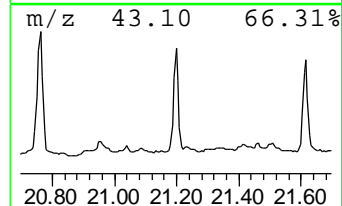
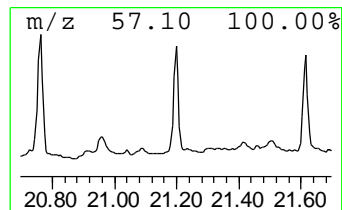
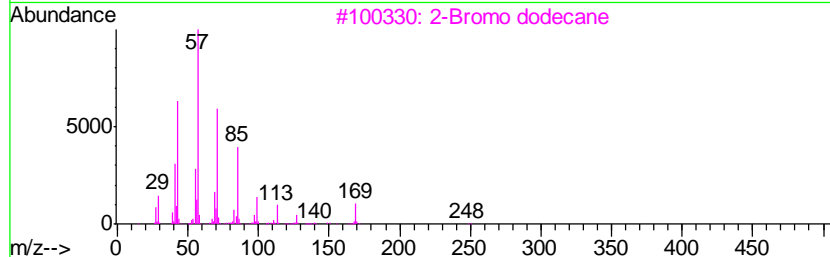
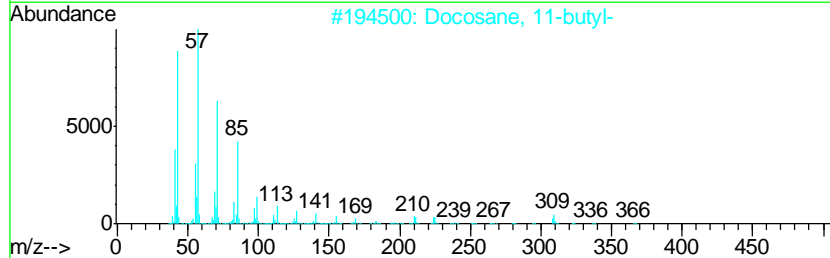
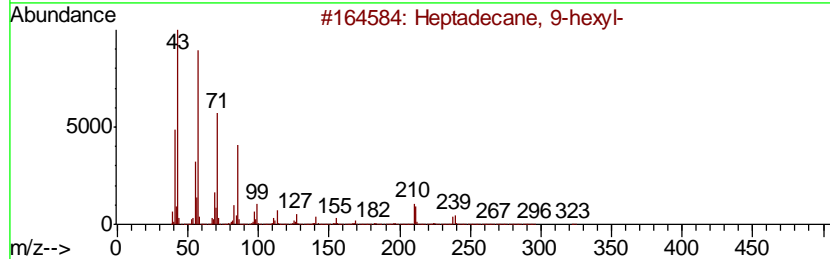
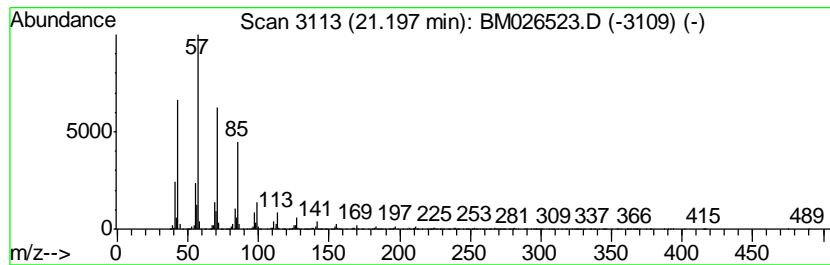
Quant Method : Z:\SVOASRV\HPCHEM1\BNA_M\METHODS\SOM-EPA-BM061220MA.M
 Quant Title : SVOA CALIBRATION

TIC Library : C:\DATABASE\NIST11.L
 TIC Integration Parameters: LSCINT.P

 Peak Number 19 (DEL) Alkane: Straight-Chai... Concentration Rank 3

R.T.	EstConc	Area	Relative to ISTD	R.T.
21.20	28.64 ng/ul	2897440	Chrysene-d12	21.00

Hit#	of	Tentative ID	MW	MolForm	CAS#	Qual
1	5	Heptadecane, 9-hexyl-	324	C23H48	055124-79-3	94
2		Docosane, 11-butyl-	366	C26H54	013475-76-8	93
3		2-Bromo dodecane	248	C12H25Br	013187-99-0	93
4		Dodecane, 2-methyl-6-propyl-	226	C16H34	055045-08-4	93
5		Docosane, 9-butyl-	366	C26H54	055282-14-9	91



Data Path : Z:\SVOASRV\HPCHEM1\BNA M\DATA\BM062320\
 Data File : BM026523.D
 Acq On : 24 Jun 2020 05:55
 Operator : JU/CG
 Sample : L3027-04
 Misc :
 ALS Vial : 33 Sample Multiplier: 1

Instrument :
 BNA_M
 ClientSampleID :
 BG2K8

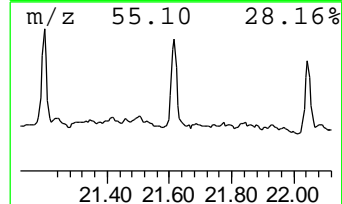
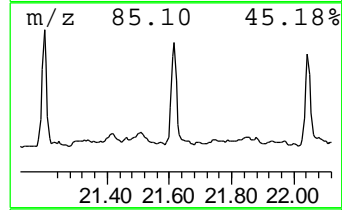
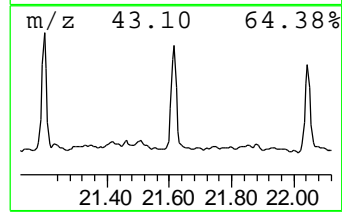
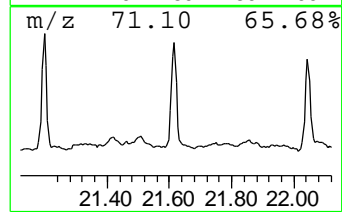
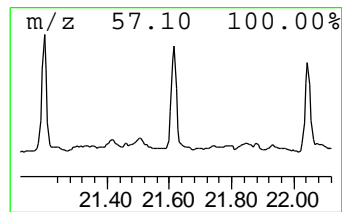
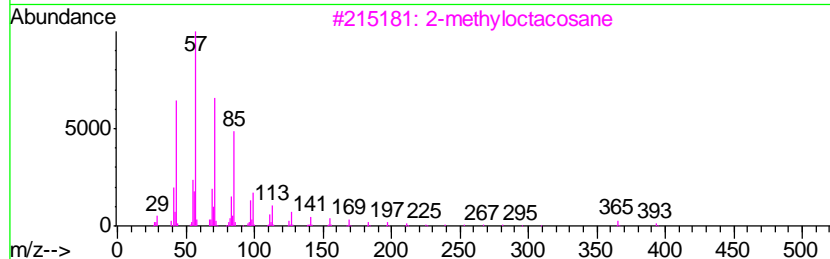
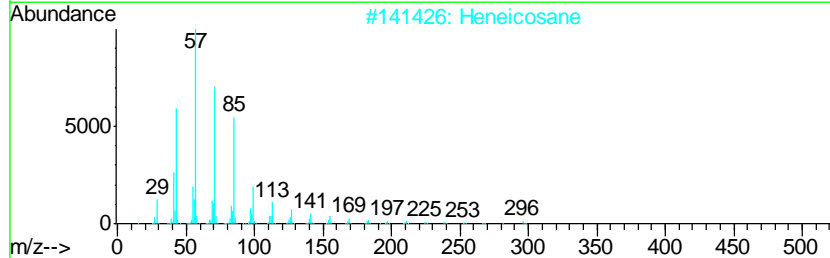
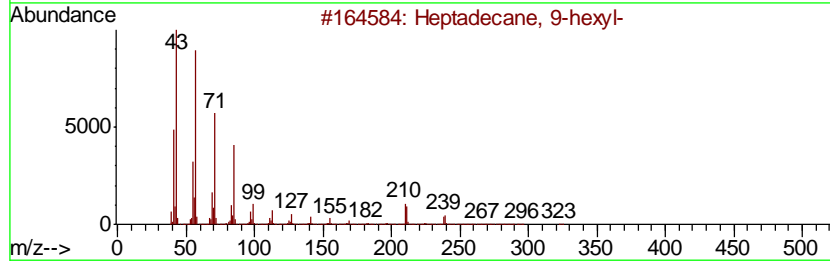
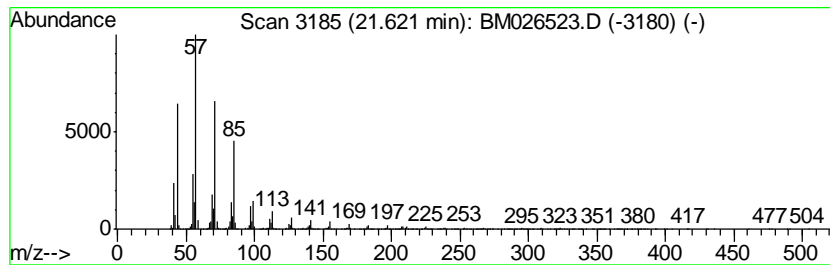
Quant Method : Z:\SVOASRV\HPCHEM1\BNA_M\METHODS\SOM-EPA-BM061220MA.M
 Quant Title : SVOA CALIBRATION

TIC Library : C:\DATABASE\NIST11.L
 TIC Integration Parameters: LSCINT.P

 Peak Number 20 (DEL) Alkane: Straight-Chai... Concentration Rank 4

R.T.	EstConc	Area	Relative to ISTD	R.T.
21.62	28.59 ng/ul	2893080	Chrysene-d12	21.00

Hit#	of	Tentative ID	MW	MolForm	CAS#	Qual
1	5	Heptadecane, 9-hexyl-	324	C23H48	055124-79-3	94
2		Heneicosane	296	C21H44	000629-94-7	91
3		2-methyloctacosane	408	C29H60	1000376-72-8	91
4		Octacosane	394	C28H58	000630-02-4	91
5		Pentacosane	352	C25H52	000629-99-2	91



Data Path : Z:\SVOASRV\HPCHEM1\BNA M\DATA\BM062320\
 Data File : BM026523.D
 Acq On : 24 Jun 2020 05:55
 Operator : JU/CG
 Sample : L3027-04
 Misc :
 ALS Vial : 33 Sample Multiplier: 1

Instrument :
 BNA_M
 ClientSampleID :
 BG2K8

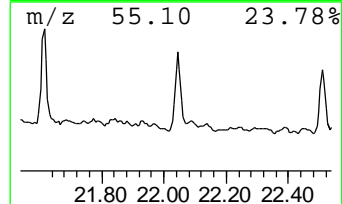
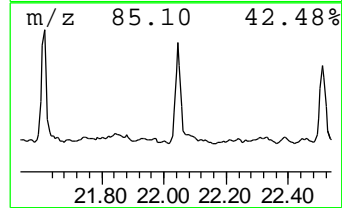
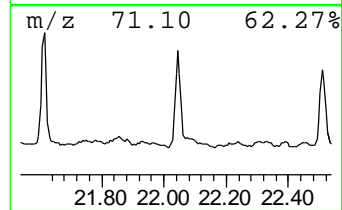
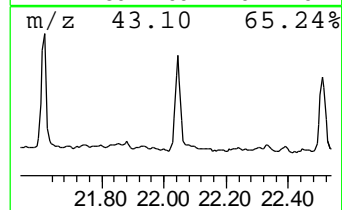
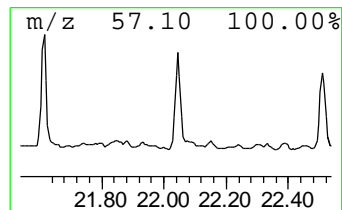
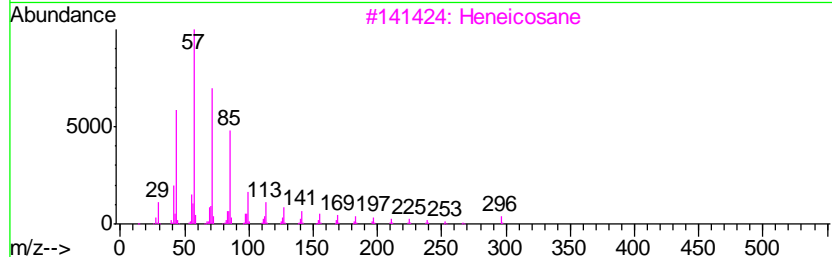
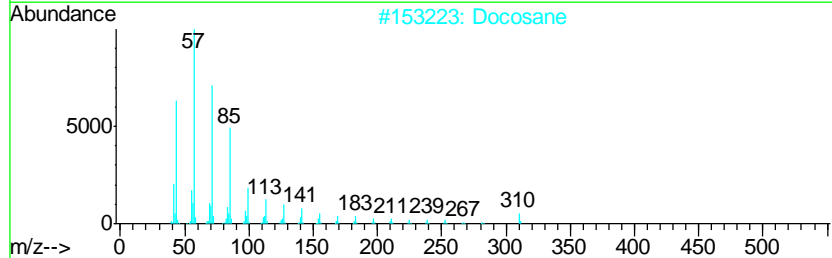
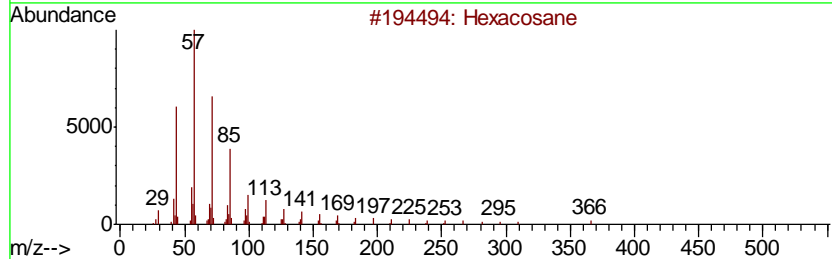
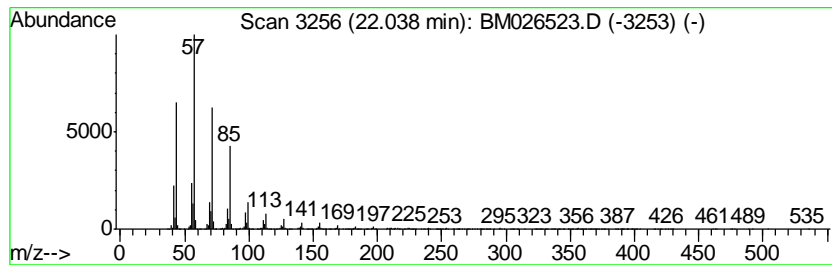
Quant Method : Z:\SVOASRV\HPCHEM1\BNA_M\METHODS\SOM-EPA-BM061220MA.M
 Quant Title : SVOA CALIBRATION

TIC Library : C:\DATABASE\NIST11.L
 TIC Integration Parameters: LSCINT.P

 Peak Number 21 (DEL) Alkane: Straight-Chai... Concentration Rank 6

R.T.	EstConc	Area	Relative to ISTD	R.T.
22.04	26.78 ng/ul	2710120	Chrysene-d12	21.00

Hit#	of	Tentative ID	MW	MolForm	CAS#	Qual
1	5	Hexacosane	366	C26H54	000630-01-3	97
2		Docosane	310	C22H46	000629-97-0	97
3		Heneicosane	296	C21H44	000629-94-7	97
4		Eicosane, 10-methyl-	296	C21H44	054833-23-7	93
5		Octacosane	394	C28H58	000630-02-4	91



Data Path : Z:\SVOASRV\HPCHEM1\BNA M\DATA\BM062320\
 Data File : BM026523.D
 Acq On : 24 Jun 2020 05:55
 Operator : JU/CG
 Sample : L3027-04
 Misc :
 ALS Vial : 33 Sample Multiplier: 1

Instrument :
 BNA_M
 ClientSampleId :
 BG2K8

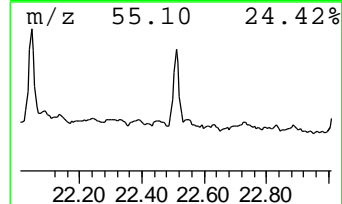
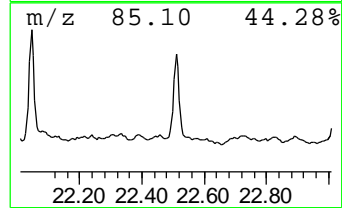
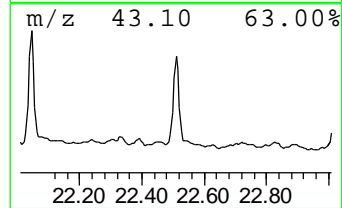
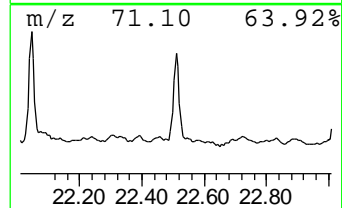
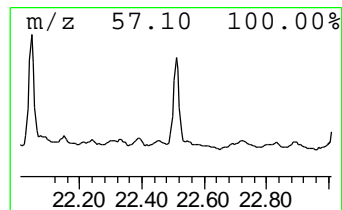
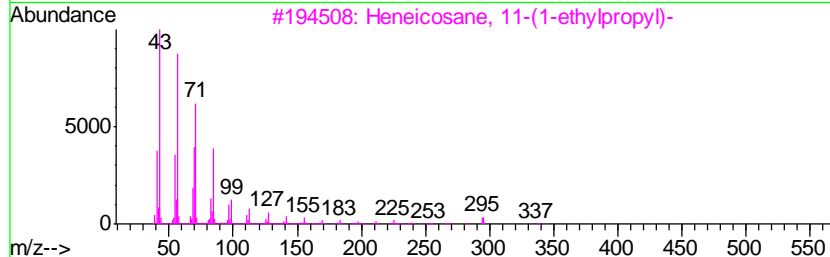
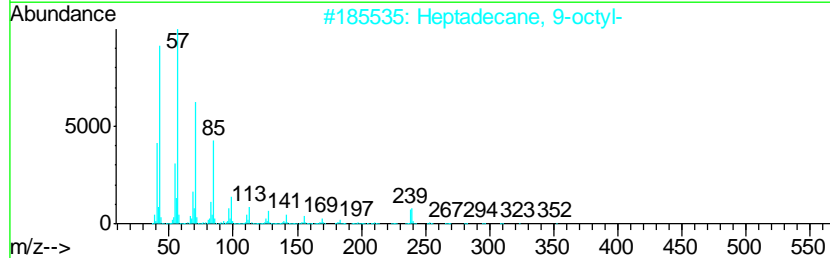
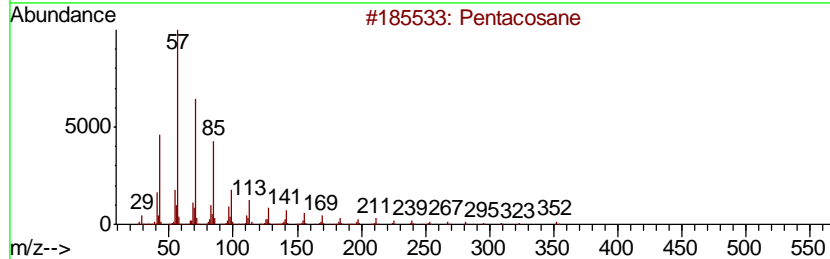
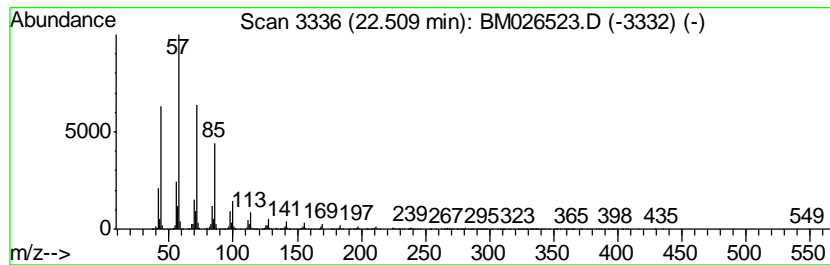
Quant Method : Z:\SVOASRV\HPCHEM1\BNA_M\METHODS\SOM-EPA-BM061220MA.M
 Quant Title : SVOA CALIBRATION

TIC Library : C:\DATABASE\NIST11.L
 TIC Integration Parameters: LSCINT.P

 Peak Number 22 (DEL) Alkane: Straight-Chai... Concentration Rank 8

R.T.	EstConc	Area	Relative to ISTD	R.T.
22.51	23.24 ng/ul	2077970	Perylene-d12	23.09

Hit#	of	Tentative ID	MW	MolForm	CAS#	Qual
1	5	Pentacosane	352	C25H52	000629-99-2	98
2		Heptadecane, 9-octyl-	352	C25H52	007225-64-1	95
3		Heneicosane, 11-(1-ethylpropyl)-	366	C26H54	055282-11-6	91
4		Heptacosane	380	C27H56	000593-49-7	91
5		Tetracosane	338	C24H50	000646-31-1	91



Data Path : Z:\SVOASRV\HPCHEM1\BNA M\DATA\BM062320\
 Data File : BM026523.D
 Acq On : 24 Jun 2020 05:55
 Operator : JU/CG
 Sample : L3027-04
 Misc :
 ALS Vial : 33 Sample Multiplier: 1

Instrument :
 BNA_M
 ClientSampleID :
 BG2K8

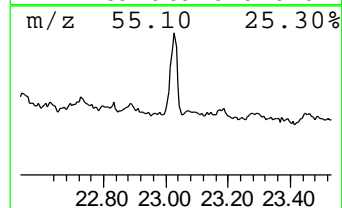
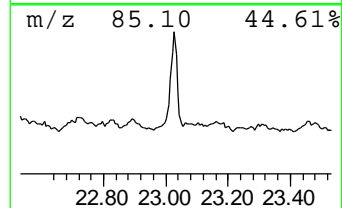
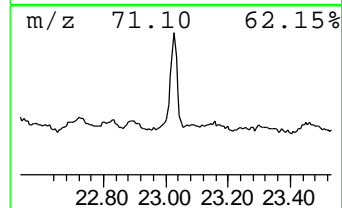
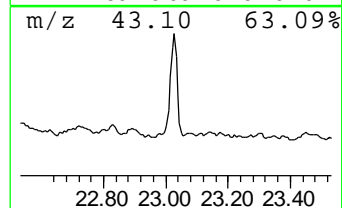
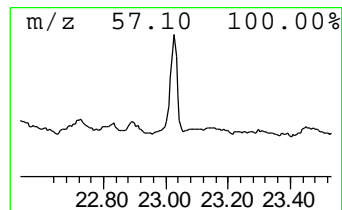
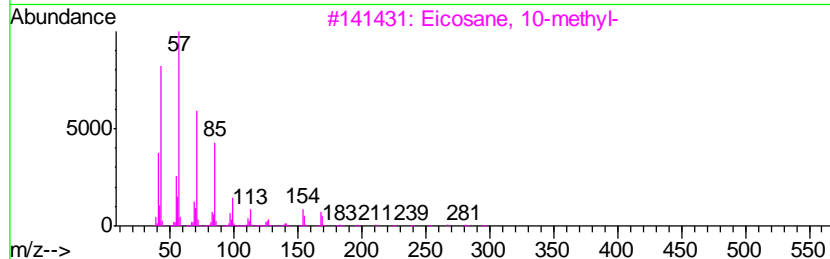
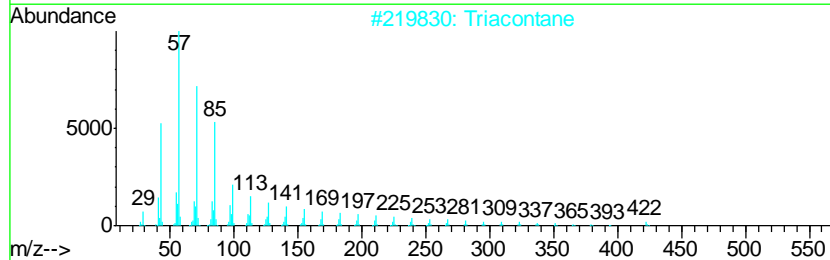
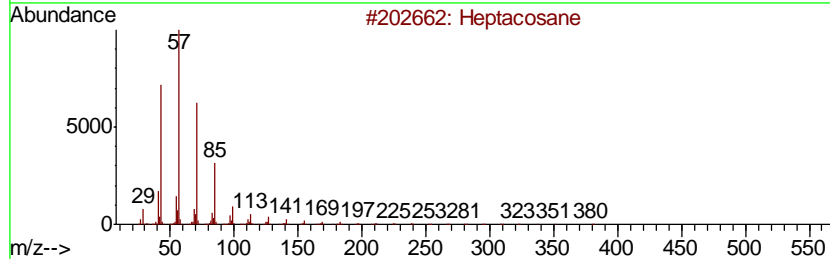
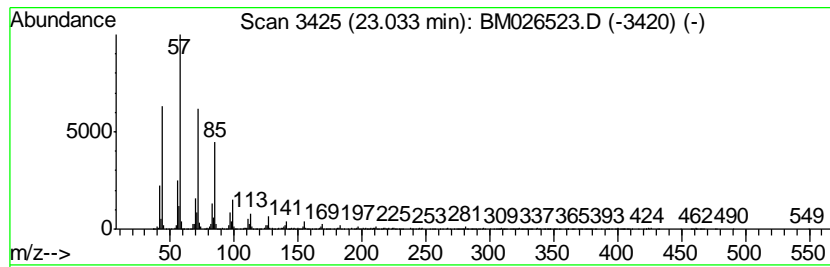
Quant Method : Z:\SVOASRV\HPCHEM1\BNA_M\METHODS\SOM-EPA-BM061220MA.M
 Quant Title : SVOA CALIBRATION

TIC Library : C:\DATABASE\NIST11.L
 TIC Integration Parameters: LSCINT.P

 Peak Number 23 (DEL) Alkane: Straight-Chai... Concentration Rank 13

R.T.	EstConc	Area	Relative to ISTD	R.T.
23.03	16.23 ng/ul	1450750	Perylene-d12	23.09

Hit#	of	Tentative ID	MW	MolForm	CAS#	Qual
1	5	Heptacosane	380	C27H56	000593-49-7	94
2		Triacosane	422	C30H62	000638-68-6	94
3		Eicosane, 10-methyl-	296	C21H44	054833-23-7	93
4		Hexacosane	366	C26H54	000630-01-3	91
5		Octadecane, 5,14-dibutyl-	366	C26H54	055282-13-8	90



Data Path : Z:\SVOASRV\HPCHEM1\BNA M\DATA\BM062320\
 Data File : BM026523.D
 Acq On : 24 Jun 2020 05:55
 Operator : JU/CG
 Sample : L3027-04
 Misc :
 ALS Vial : 33 Sample Multiplier: 1

Instrument :
 BNA_M
 ClientSampleId :
 BG2K8

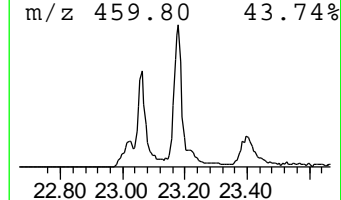
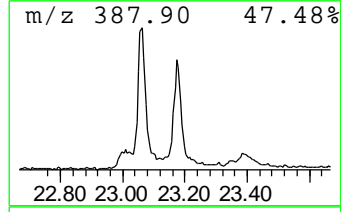
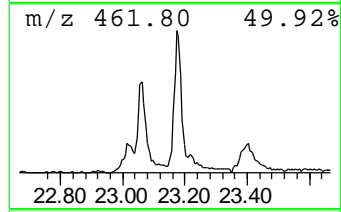
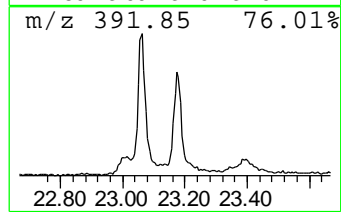
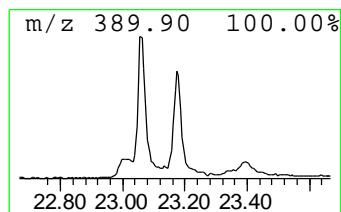
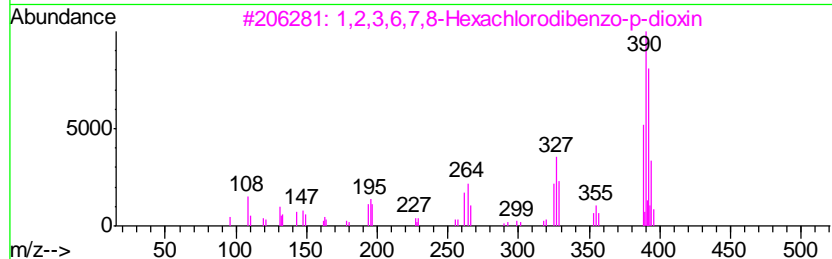
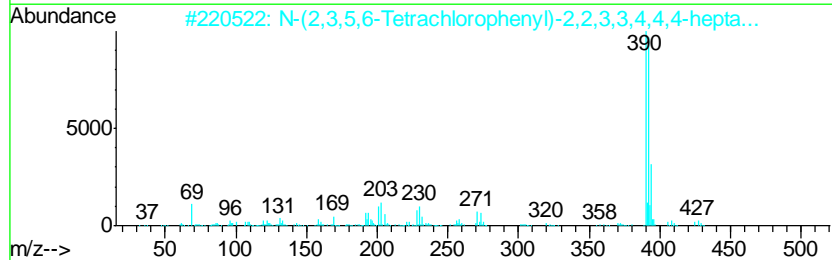
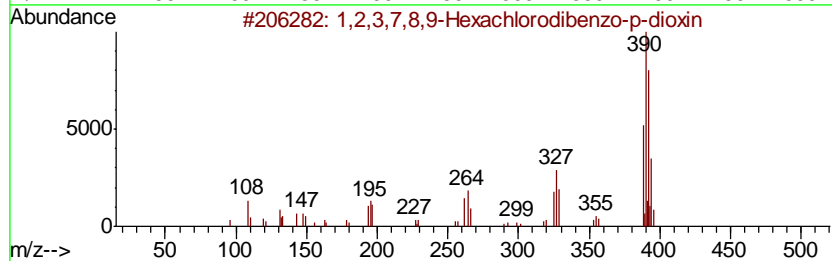
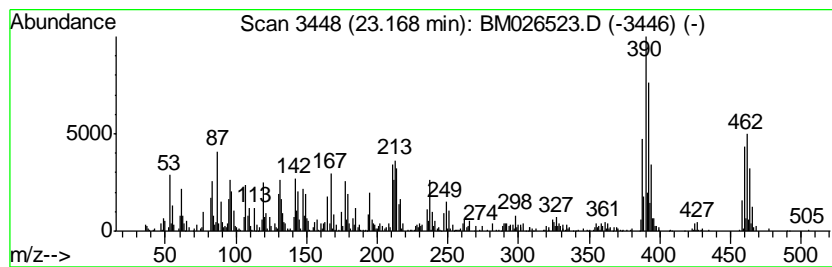
Quant Method : Z:\SVOASRV\HPCHEM1\BNA_M\METHODS\SOM-EPA-BM061220MA.M
 Quant Title : SVOA CALIBRATION

TIC Library : C:\DATABASE\NIST11.L
 TIC Integration Parameters: LSCINT.P

 Peak Number 24 1,2,3,7,8,9-Hexachlorodiben... Concentration Rank 16

R.T.	EstConc	Area	Relative to ISTD	R.T.
23.17	10.08 ng/ul	901325	Perylene-d12	23.09

Hit#	of	Tentative ID	MW	MolForm	CAS#	Qual
1	5	1,2,3,7,8,9-Hexachlorodibenzo-p-...	388	C12H2Cl6O2	019408-74-3	78
2		N-(2,3,5,6-Tetrachlorophenyl)-2,...	425	C10H2Cl4F7NO	1000373-25-8	50
3		1,2,3,6,7,8-Hexachlorodibenzo-p-...	388	C12H2Cl6O2	057653-85-7	49
4		Thieno[2.3-b]thiophene, 2-bromo-...	390	C11H8Br2N2S2	1000268-03-5	22
5		1,1'-Azinobis[7-chloro-3-[3,4-di...	810	C38H24Cl16N4O4	1000213-53-4	22



Data Path : Z:\SVOASRV\HPCHEM1\BNA M\DATA\BM062320\
 Data File : BM026523.D
 Acq On : 24 Jun 2020 05:55
 Operator : JU/CG
 Sample : L3027-04
 Misc :
 ALS Vial : 33 Sample Multiplier: 1

Instrument :
 BNA_M
 ClientSampleID :
 BG2K8

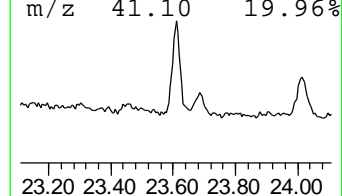
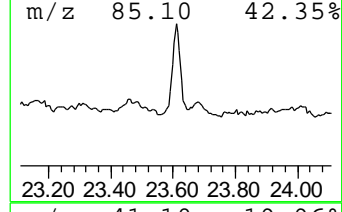
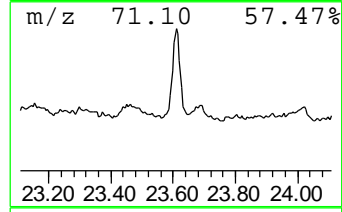
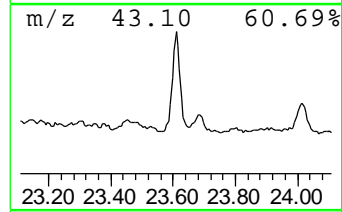
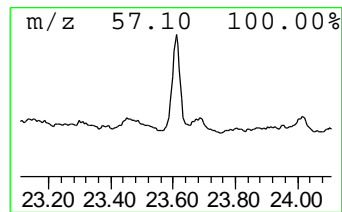
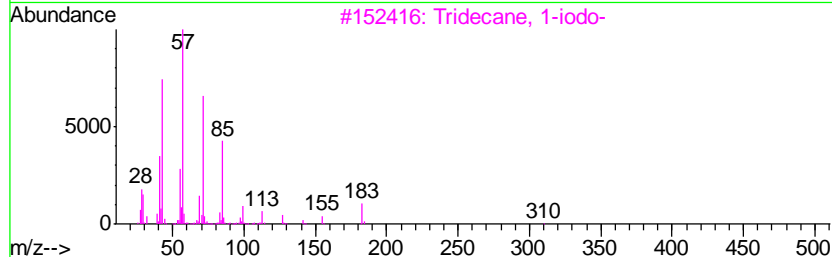
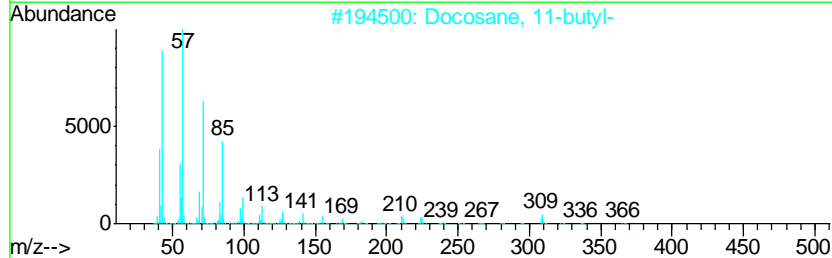
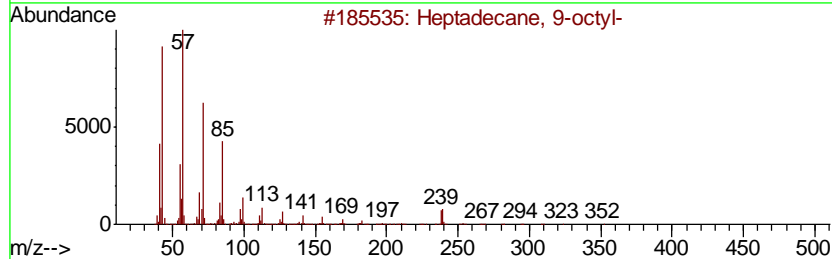
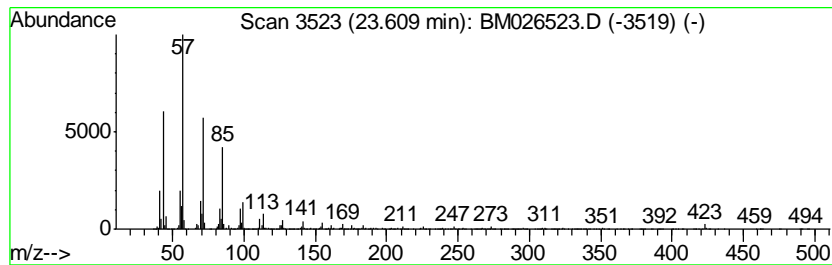
Quant Method : Z:\SVOASRV\HPCHEM1\BNA_M\METHODS\SOM-EPA-BM061220MA.M
 Quant Title : SVOA CALIBRATION

TIC Library : C:\DATABASE\NIST11.L
 TIC Integration Parameters: LSCINT.P

 Peak Number 25 (DEL) Alkane: Straight-Chai... Concentration Rank 12

R.T.	EstConc	Area	Relative to ISTD	R.T.
23.61	16.48 ng/ul	1473200	Perylene-d12	23.09

Hit#	of	Tentative ID	MW	MolForm	CAS#	Qual
1	5	Heptadecane, 9-octyl-	352	C25H52	007225-64-1	96
2		Docosane, 11-butyl-	366	C26H54	013475-76-8	93
3		Tridecane, 1-iodo-	310	C13H27I	035599-77-0	91
4		2-Bromo dodecane	248	C12H25Br	013187-99-0	91
5		Octacosane	394	C28H58	000630-02-4	90



Data Path : Z:\SVOASRV\HPCHEM1\BNA M\DATA\BM062320\
 Data File : BM026523.D
 Acq On : 24 Jun 2020 05:55
 Operator : JU/CG
 Sample : L3027-04
 Misc :
 ALS Vial : 33 Sample Multiplier: 1

Instrument :
 BNA_M
 ClientSampleId :
 BG2K8

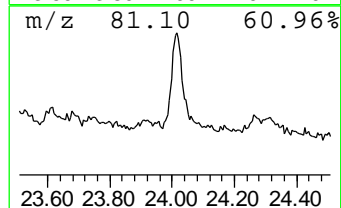
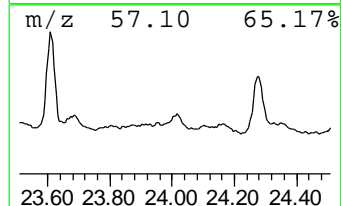
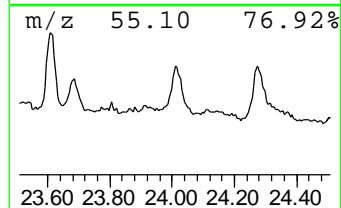
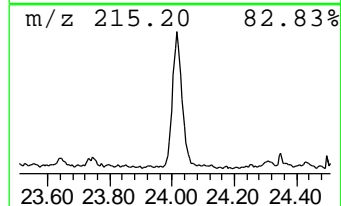
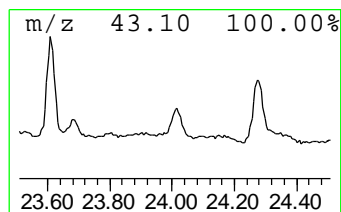
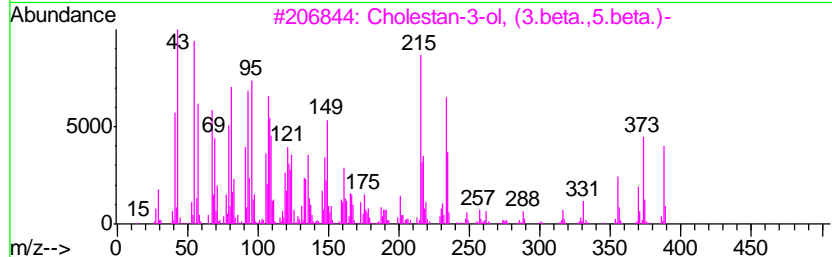
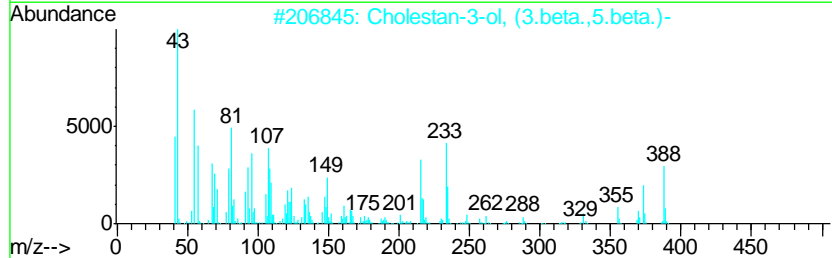
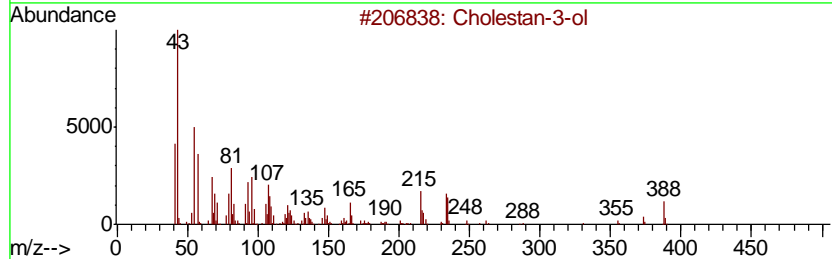
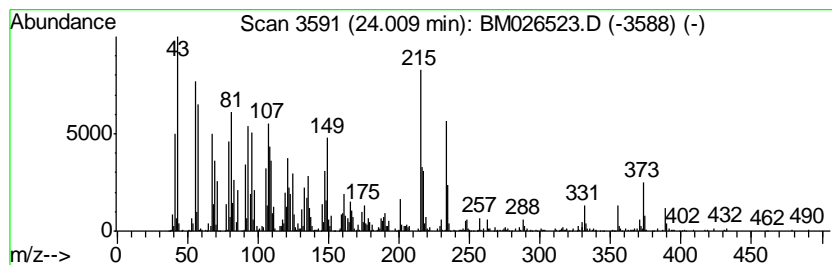
Quant Method : Z:\SVOASRV\HPCHEM1\BNA_M\METHODS\SOM-EPA-BM061220MA.M
 Quant Title : SVOA CALIBRATION

TIC Library : C:\DATABASE\NIST11.L
 TIC Integration Parameters: LSCINT.P

 Peak Number 26 Cholestan-3-ol Concentration Rank 14

R.T.	EstConc	Area	Relative to ISTD	R.T.
24.01	15.51 ng/ul	1386600	Perylene-d12	23.09

Hit#	of	Tentative ID	MW	MolForm	CAS#	Qual
1	5	Cholestan-3-ol	388	C27H48O	027409-41-2	70
2		Cholestan-3-ol, (3.beta.,5.beta.)-	388	C27H48O	000360-68-9	60
3		Cholestan-3-ol, (3.beta.,5.beta.)-	388	C27H48O	000360-68-9	58
4		Cholestan-3-ol	388	C27H48O	027409-41-2	50
5		Cholestanol	388	C27H48O	000080-97-7	43



Data Path : Z:\SVOASRV\HPCHEM1\BNA M\DATA\BM062320\
 Data File : BM026523.D
 Acq On : 24 Jun 2020 05:55
 Operator : JU/CG
 Sample : L3027-04
 Misc :
 ALS Vial : 33 Sample Multiplier: 1

Instrument :
 BNA_M
 ClientSampleId :
 BG2K8

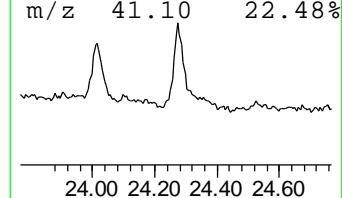
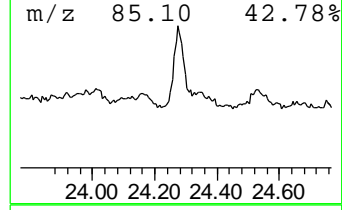
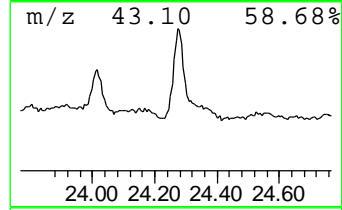
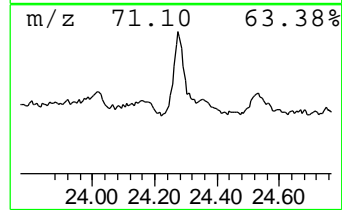
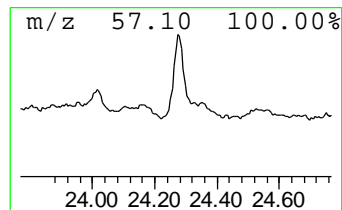
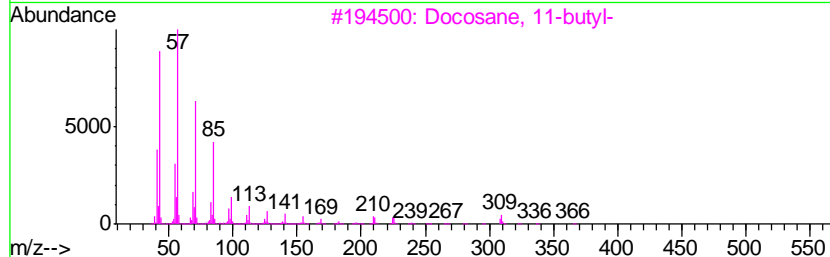
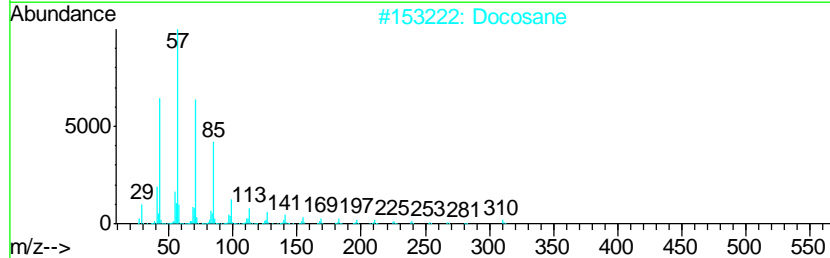
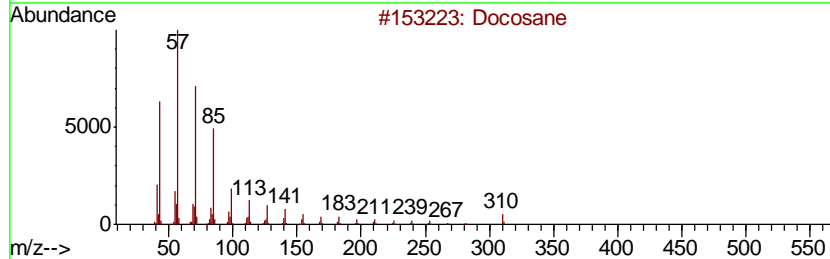
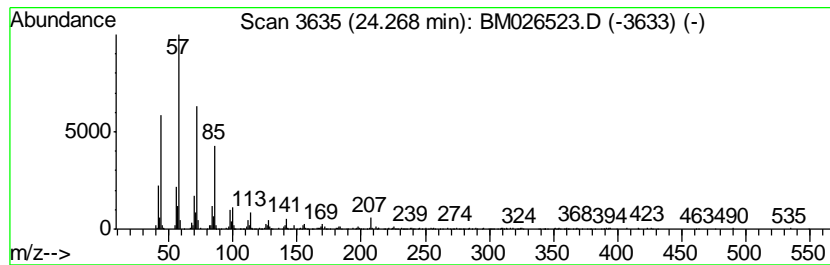
Quant Method : Z:\SVOASRV\HPCHEM1\BNA_M\METHODS\SOM-EPA-BM061220MA.M
 Quant Title : SVOA CALIBRATION

TIC Library : C:\DATABASE\NIST11.L
 TIC Integration Parameters: LSCINT.P

 Peak Number 27 (DEL) Alkane: Straight-Chai... Concentration Rank 18

R.T.	EstConc	Area	Relative to ISTD	R.T.
24.27	8.60 ng/ul	768425	Perylene-d12	23.09

Hit#	of	Tentative ID	MW	MolForm	CAS#	Qual
1	5	Docosane	310	C22H46	000629-97-0	95
2		Docosane	310	C22H46	000629-97-0	93
3		Docosane, 11-butyl-	366	C26H54	013475-76-8	93
4		Tridecane, 1-iodo-	310	C13H27I	035599-77-0	91
5		Heneicosane, 11-(1-ethylpropyl)-	366	C26H54	055282-11-6	90



Data Path : Z:\SVOASRV\HPCHEM1\BNA M\DATA\BM062320\
 Data File : BM026523.D
 Acq On : 24 Jun 2020 05:55
 Operator : JU/CG
 Sample : L3027-04
 Misc :
 ALS Vial : 33 Sample Multiplier: 1

Instrument :
 BNA_M
 ClientSampleID :
 BG2K8

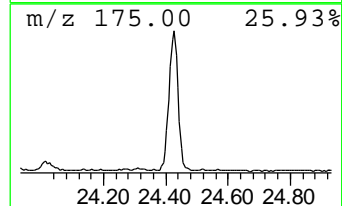
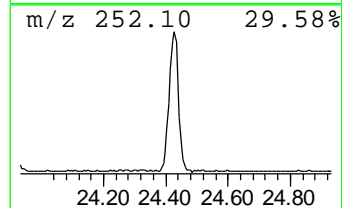
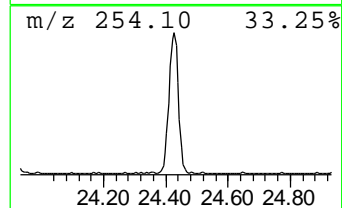
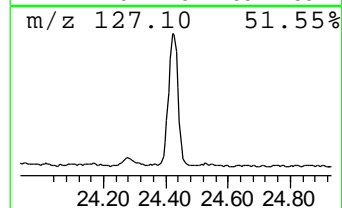
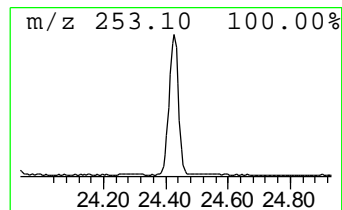
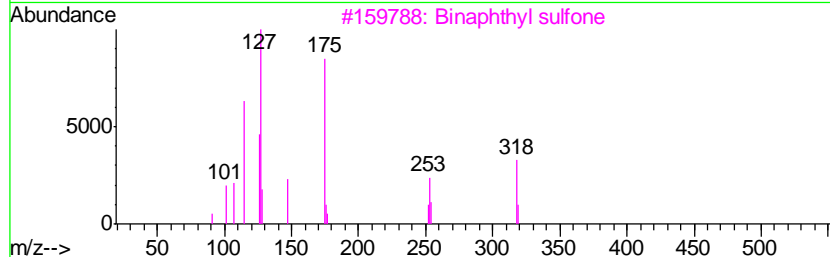
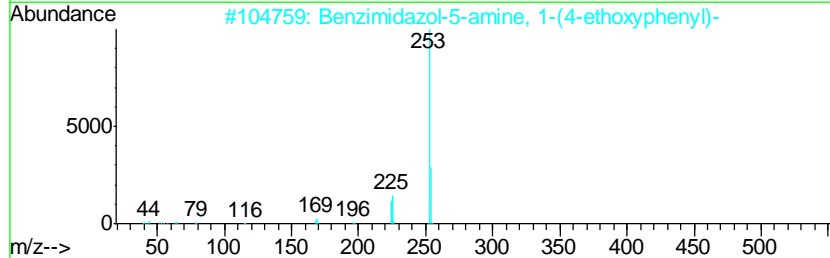
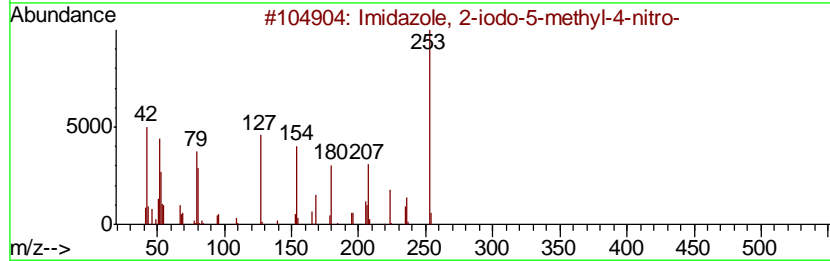
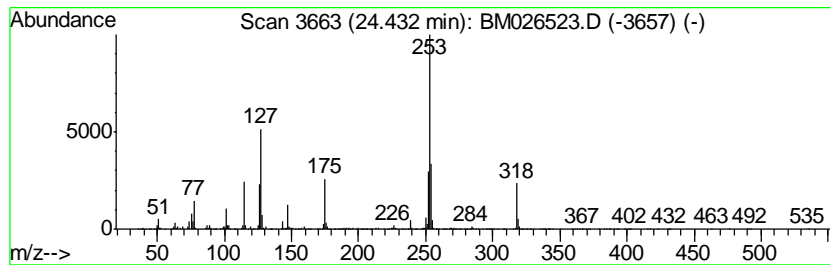
Quant Method : Z:\SVOASRV\HPCHEM1\BNA_M\METHODS\SOM-EPA-BM061220MA.M
 Quant Title : SVOA CALIBRATION

TIC Library : C:\DATABASE\NIST11.L
 TIC Integration Parameters: LSCINT.P

 Peak Number 28 unknown-02 Concentration Rank 10

R.T.	EstConc	Area	Relative to ISTD	R.T.
24.43	22.26 ng/ul	1989900	Perylene-d12	23.09

Hit#	of	Tentative ID	MW	MolForm	CAS#	Qual
1	5	Imidazole, 2-iodo-5-methyl-4-nitro-	253	C4H4IN3O2	149510-86-1	38
2		Benzimidazol-5-amine, 1-(4-ethox...	253	C15H15N3O	007104-62-3	27
3		Binaphthyl sulfone	318	C20H14O2S	032390-26-4	22
4		2-[2-Thienyl]-4-acetyl quinoline	253	C15H11NOS	027302-83-6	12
5		2-Anilino-4-chloroquinoline	254	C15H11ClN2	032888-95-2	10



Data Path : Z:\SVOASRV\HPCHEM1\BNA M\DATA\BM062320\
 Data File : BM026523.D
 Acq On : 24 Jun 2020 05:55
 Operator : JU/CG
 Sample : L3027-04
 Misc :
 ALS Vial : 33 Sample Multiplier: 1

Instrument :
 BNA_M
 ClientSampleId :
 BG2K8

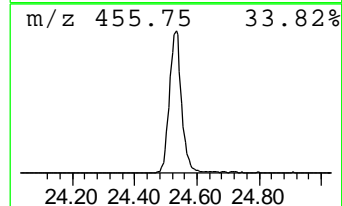
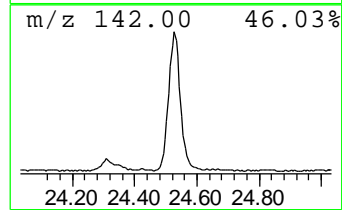
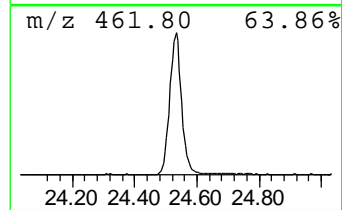
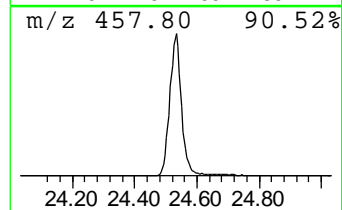
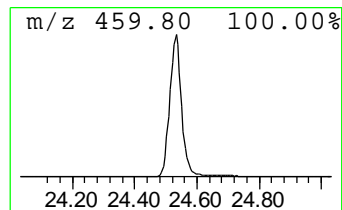
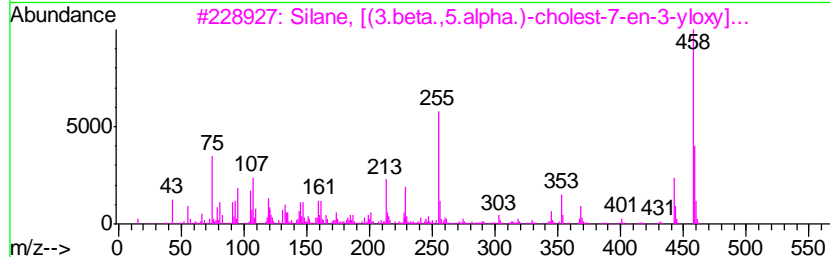
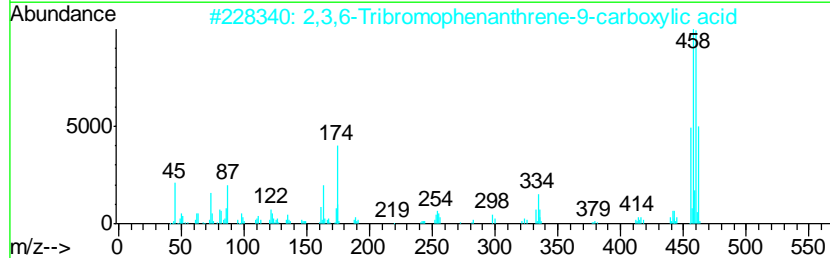
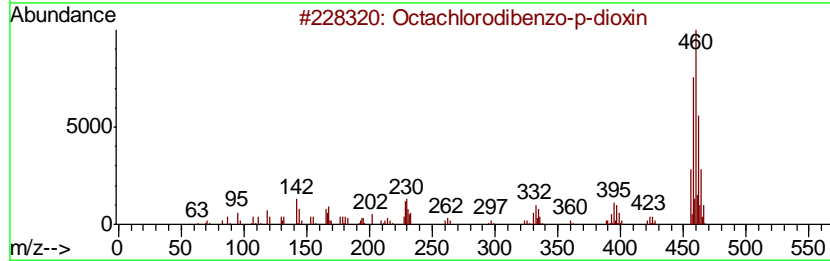
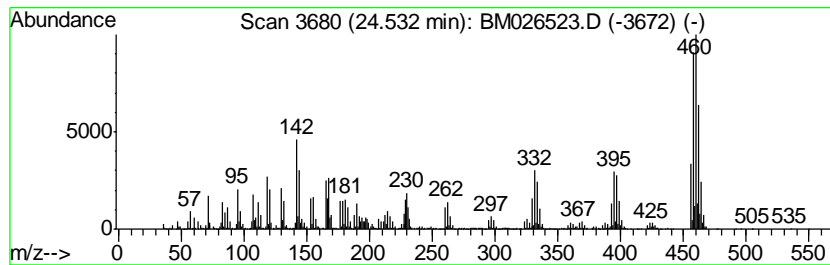
Quant Method : Z:\SVOASRV\HPCHEM1\BNA_M\METHODS\SOM-EPA-BM061220MA.M
 Quant Title : SVOA CALIBRATION

TIC Library : C:\DATABASE\NIST11.L
 TIC Integration Parameters: LSCINT.P

 Peak Number 29 Octachlorodibenzo-p-dioxin Concentration Rank 1

R.T.	EstConc	Area	Relative to ISTD	R.T.
24.53	50.46 ng/ul	4510760	Perylene-d12	23.09

Hit#	of	Tentative ID	MW	MolForm	CAS#	Qual
1	5	Octachlorodibenzo-p-dioxin	456	C12Cl8O2	003268-87-9	87
2		2,3,6-Tribromophenanthrene-9-car...	456	C15H7Br3O2	056988-60-4	46
3		Silane, [(3.beta.,5.alpha.)-chol...	458	C30H54OSi	002665-03-4	11
4		Benzene, 1,4-bis(3-phenylindol-2...	460	C34H24N2	164936-88-3	10
5		1,3,5-Triazine-2,4,6-triamine, N...	460	C27H24N8	033933-66-3	9



Data Path : Z:\SVOASRV\HPCHEM1\BNA M\DATA\BM062320\
 Data File : BM026523.D
 Acq On : 24 Jun 2020 05:55
 Operator : JU/CG
 Sample : L3027-04
 Misc :
 ALS Vial : 33 Sample Multiplier: 1

Instrument :
 BNA_M
 ClientSampleID :
 BG2K8

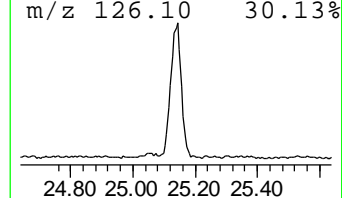
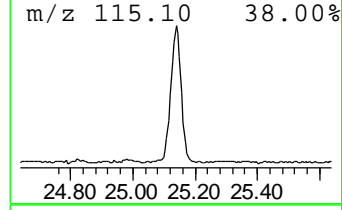
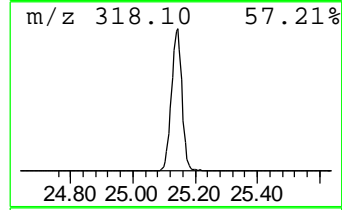
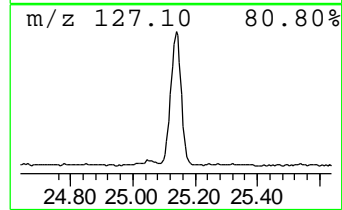
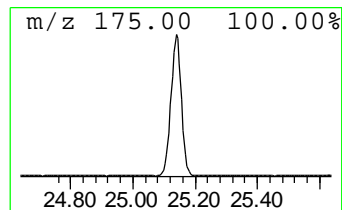
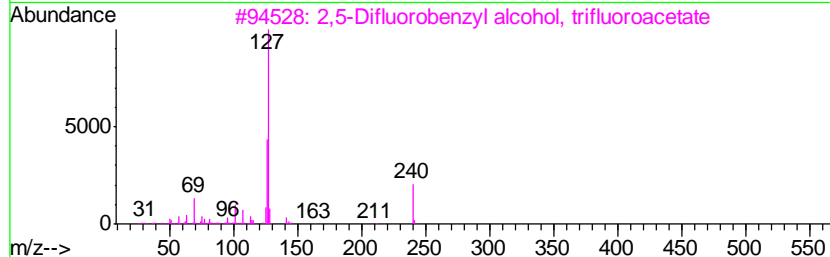
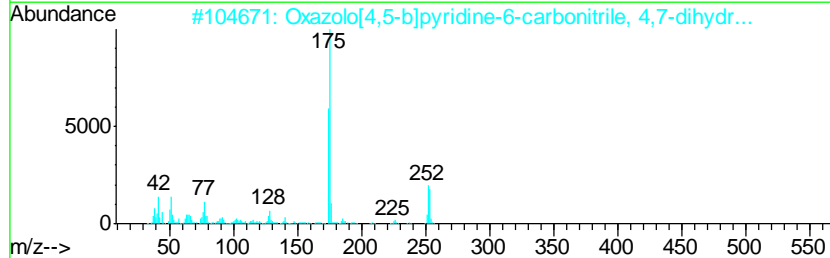
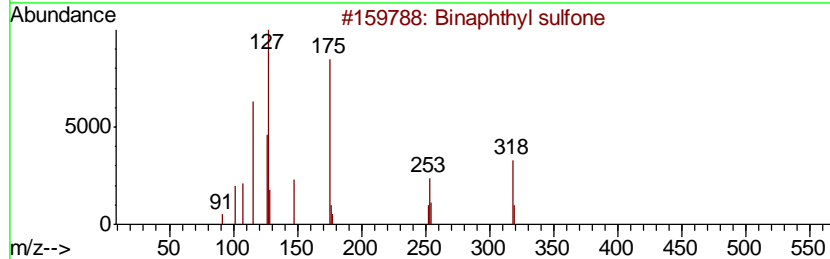
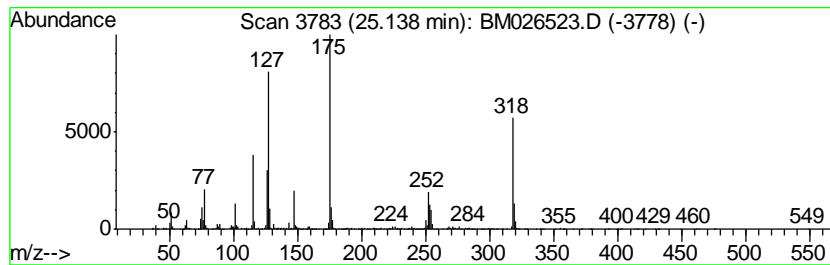
Quant Method : Z:\SVOASRV\HPCHEM1\BNA_M\METHODS\SOM-EPA-BM061220MA.M
 Quant Title : SVOA CALIBRATION

TIC Library : C:\DATABASE\NIST11.L
 TIC Integration Parameters: LSCINT.P

 Peak Number 30 unknown-03 Concentration Rank 7

R.T.	EstConc	Area	Relative to ISTD	R.T.
25.14	23.44 ng/ul	2095300	Perylene-d12	23.09

Hit#	of	Tentative ID	MW	MolForm	CAS#	Qual
1	5	Binaphthyl sulfone	318	C20H14O2S	032390-26-4	38
2		Oxazolo[4,5-b]pyridine-6-carboni...	253	C14H11N3O2	1000259-79-0	25
3		2,5-Difluorobenzyl alcohol, trif...	240	C9H5F5O2	1000364-23-9	22
4		4-Methyl-2,6-dihydroxyquinoline	175	C10H9NO2	034982-01-9	22
5		4H,7H-Pyrazolo[3,4-b]pyran-5-car...	253	C13H11N5O	132813-99-1	14



Data Path : Z:\SVOASRV\HPCHEM1\BNA_M\DATA\BM062320\
 Data File : BM026523.D
 Acq On : 24 Jun 2020 05:55
 Operator : JU/CG
 Sample : L3027-04
 Misc :
 ALS Vial : 33 Sample Multiplier: 1

Instrument :
 BNA_M
 ClientSampleId :
 BG2K8

Quant Method : Z:\SVOASRV\HPCHEM1\BNA_M\METHODS\SOM-EPA-BM061220MA.M
 Quant Title : SVOA CALIBRATION

TIC Library : C:\DATABASE\NIST11.L
 TIC Integration Parameters: LSCINT.P

TIC Top Hit name	RT	EstConc	Units	Response	--Internal Standard--			
					#	RT	Resp	Conc
Benzene, isocyanato-	6.46	2.4	ng/ul	122335	1	7.38	1037270	20.0
(DEL) Alkane: Str...	7.02	3.4	ng/ul	176422	1	7.38	1037270	20.0
Sulfurous acid, 2...	7.61	2.5	ng/ul	129478	1	7.38	1037270	20.0
(DEL) Alkane: Str...	8.61	3.2	ng/ul	166704	1	7.38	1037270	20.0
Benzenesulfonamid...	15.77	2.7	ng/ul	301735	4	16.80	2258380	20.0
(DEL) Alkane: Str...	15.82	5.3	ng/ul	597102	4	16.80	2258380	20.0
(DEL) Alkane: Str...	16.64	2.5	ng/ul	278951	4	16.80	2258380	20.0
Ethanol, 2-[4-(1,...	17.17	2.7	ng/ul	307997	4	16.80	2258380	20.0
(DEL) Alkane: Str...	17.33	2.9	ng/ul	321387	4	16.80	2258380	20.0
(DEL) Alkane: Str...	18.02	4.6	ng/ul	523941	4	16.80	2258380	20.0
unknown-01	18.49	2.9	ng/ul	322729	4	16.80	2258380	20.0
(DEL) Alkane: Str...	18.67	8.7	ng/ul	978491	4	16.80	2258380	20.0
Oleic Acid	18.93	3.8	ng/ul	379056	5	21.00	2023640	20.0
Octadecanoic acid	19.04	12.2	ng/ul	1232700	5	21.00	2023640	20.0
(DEL) Alkane: Str...	19.26	17.8	ng/ul	1798070	5	21.00	2023640	20.0
(DEL) Alkane: Str...	19.80	23.2	ng/ul	2350110	5	21.00	2023640	20.0
(DEL) Alkane: Str...	20.30	27.9	ng/ul	2819590	5	21.00	2023640	20.0
(DEL) Alkane: Str...	20.76	39.4	ng/ul	3983210	5	21.00	2023640	20.0
(DEL) Alkane: Str...	21.20	28.6	ng/ul	2897440	5	21.00	2023640	20.0
(DEL) Alkane: Str...	21.62	28.6	ng/ul	2893080	5	21.00	2023640	20.0
(DEL) Alkane: Str...	22.04	26.8	ng/ul	2710120	5	21.00	2023640	20.0
(DEL) Alkane: Str...	22.51	23.2	ng/ul	2077970	6	23.09	1787910	20.0
(DEL) Alkane: Str...	23.03	16.2	ng/ul	1450750	6	23.09	1787910	20.0
1,2,3,7,8,9-Hexac...	23.17	10.1	ng/ul	901325	6	23.09	1787910	20.0
(DEL) Alkane: Str...	23.61	16.5	ng/ul	1473200	6	23.09	1787910	20.0
Cholestan-3-ol	24.01	15.5	ng/ul	1386600	6	23.09	1787910	20.0
(DEL) Alkane: Str...	24.27	8.6	ng/ul	768425	6	23.09	1787910	20.0
unknown-02	24.43	22.3	ng/ul	1989900	6	23.09	1787910	20.0
Octachlorodibenzo...	24.53	50.5	ng/ul	4510760	6	23.09	1787910	20.0
unknown-03	25.14	23.4	ng/ul	2095300	6	23.09	1787910	20.0