

Data Path : Z:\svoasrv\HPCHEM1\BNA_M\Data\BM062424\
 Data File : BM046326.D
 Acq On : 26 Jun 2024 12:44
 Operator : MA/JU
 Sample : P2909-12DL 5X
 Misc :
 ALS Vial : 87 Sample Multiplier: 1

Instrument :
 BNA_M
ClientSampleId :
 A4CP1DL

Manual Integrations
APPROVED
 Reviewed By :Yogesh Patel 06/27/2024
 Supervised By :mohammad ahmed 06/27/2024

Quant Time: Jun 26 15:24:58 2024
 Quant Method : Z:\svoasrv\HPCHEM1\BNA_M\Methods\SFAM-EPA-SIM-BM061824.M
 Quant Title : ASP BNA STANDARDS FOR 5 POINT CALIBRATION
 QLast Update : Wed Jun 26 03:24:28 2024
 Response via : Initial Calibration

Compound	R.T.	QIon	Response	Conc	Units	Dev(Min)
Internal Standards						
1) 1,4-Dichlorobenzene-d4	7.409	152	2121	0.400	ng/ul	-0.04
4) Naphthalene-d8	10.209	136	5918	0.400	ng/ul	#-0.01
9) Acenaphthene-d10	14.057	164	3571	0.400	ng/ul	-0.01
13) Phenanthrene-d10	16.802	188	6982	0.400	ng/ul	-0.04
17) Chrysene-d12	21.000	240	5893	0.400	ng/ul	-0.02
23) Perylene-d12	23.087	264	7109m	0.400	ng/ul	-0.02
System Monitoring Compounds						
3) 1,4-Dioxane-d8	3.025	96	1791	0.615	ng/ul	0.00
6) 2-Methylnaphthalene-d10	11.826	152	345	0.043	ng/ul	-0.02
18) Fluoranthene-d10	18.833	212	928	0.053	ng/ul	-0.02
Target Compounds						
						Qvalue
5) Naphthalene	10.259	128	791	0.048	ng/ul#	48
7) 2-Methylnaphthalene	11.909	142	232	0.025	ng/ul	88
8) 1-Methylnaphthalene	12.112	142	211	0.021	ng/ul	90
10) Acenaphthylene	13.774	152	2070	0.122	ng/ul#	84
11) Acenaphthene	14.117	153	836	0.068	ng/ul	94
12) Fluorene	15.121	166	999	0.076	ng/ul#	96
15) Phenanthrene	16.844	178	22231	1.133	ng/ul	97
16) Anthracene	16.937	178	4744	0.325	ng/ul	96
19) Fluoranthene	18.861	202	54367	2.131	ng/ul	95
20) Pyrene	19.224	202	38396	1.391	ng/ul	95
21) Benzo(a)anthracene	20.985	228	24489	1.076	ng/ul	98
22) Chrysene	21.035	228	23922	0.823	ng/ul	98
24) Benzo(b)fluoranthene	22.475	252	36574m	1.428	ng/ul	
25) Benzo(k)fluoranthene	22.508	252	16495m	0.542	ng/ul	
26) Benzo(a)pyrene	22.999	252	13003	0.548	ng/ul	90
27) Indeno(1,2,3-cd)pyrene	25.132	276	13577m	0.350	ng/ul	
28) Dibenzo(a,h)anthracene	25.132	278	4676m	0.162	ng/ul	
29) Benzo(g,h,i)perylene	25.752	276	2032	0.061	ng/ul#	61

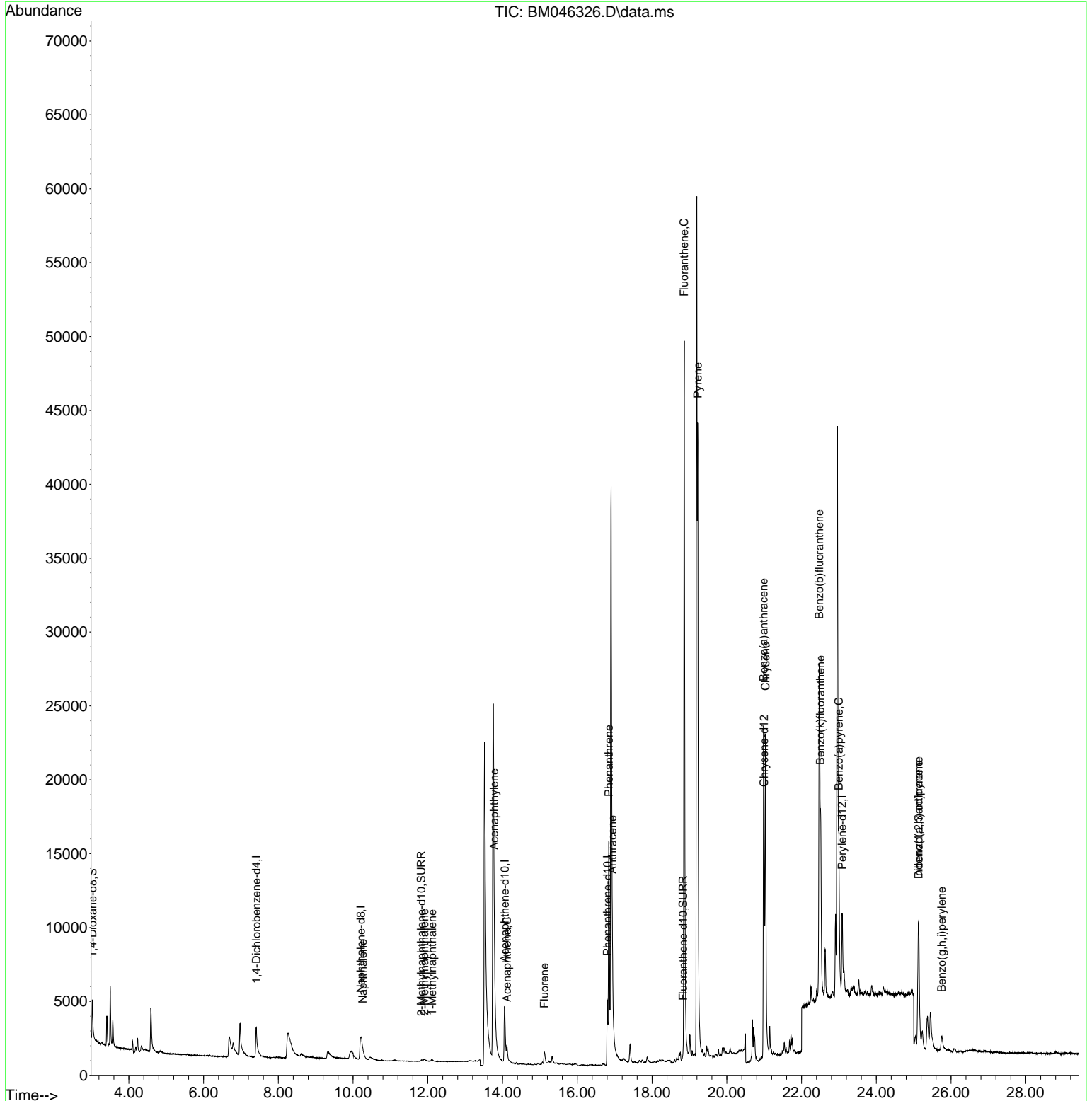
(#) = qualifier out of range (m) = manual integration (+) = signals summed

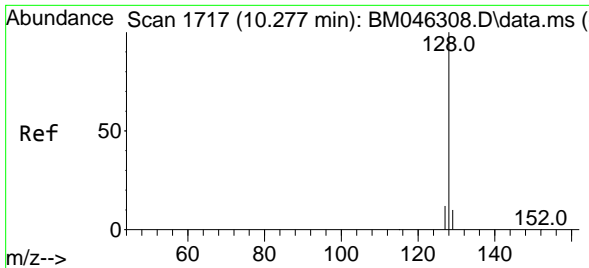
Data Path : Z:\svoasrv\HPCHEM1\BNA_M\Data\BM062424\
 Data File : BM046326.D
 Acq On : 26 Jun 2024 12:44
 Operator : MA/JU
 Sample : P2909-12DL 5X
 Misc :
 ALS Vial : 87 Sample Multiplier: 1

Instrument :
 BNA_M
ClientSampleId :
 A4CP1DL

Quant Time: Jun 26 15:24:58 2024
 Quant Method : Z:\svoasrv\HPCHEM1\BNA_M\Methods\SFAM-EPA-SIM-BM061824.M
 Quant Title : ASP BNA STANDARDS FOR 5 POINT CALIBRATION
 QLast Update : Wed Jun 26 03:24:28 2024
 Response via : Initial Calibration

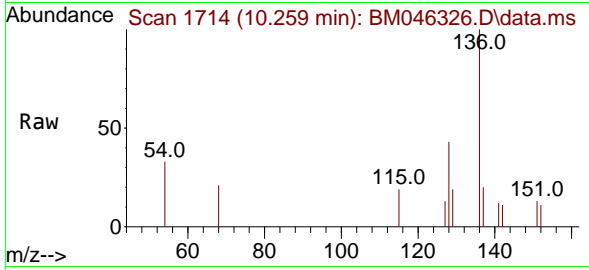
Manual Integrations
APPROVED
 Reviewed By :Yogesh Patel 06/27/2024
 Supervised By :mohammad ahmed 06/27/2024





#5
 Naphthalene
 Concen: 0.048 ng/u1
 RT: 10.259 min Scan# 1714
 Delta R.T. -0.018 min
 Lab File: BM046326.D
 Acq: 26 Jun 2024 12:44

Instrument : BNA_M
 ClientSampleId : A4CP1DL

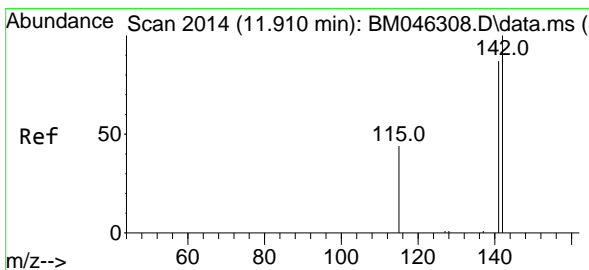
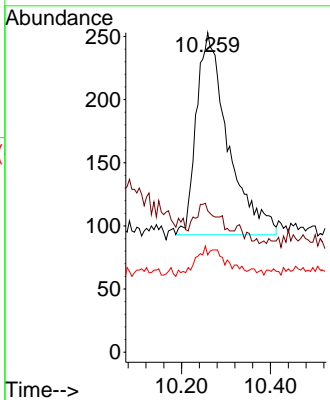
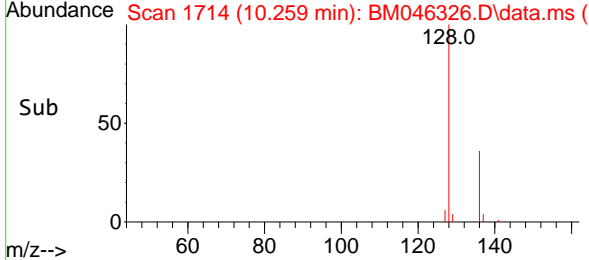


Tgt Ion:128 Resp: 79

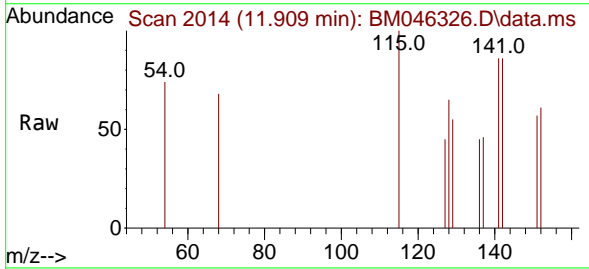
Ion	Ratio	Lower	Upper
128	100		
129	44.3	11.8	17.6
127	30.4	12.8	19.2

Manual Integrations
 APPROVED

Reviewed By :Yogesh Patel 06/27/2024
 Supervised By :mohammad ahmed 06/27/2024

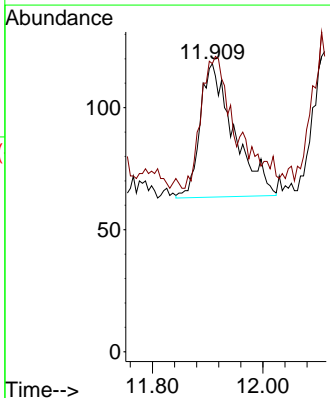
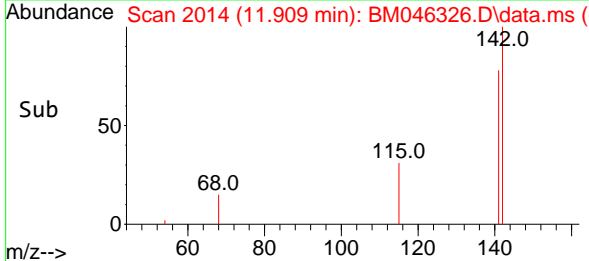


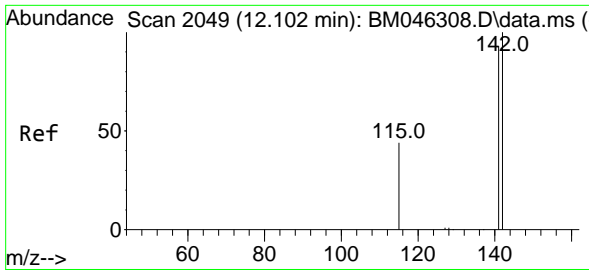
#7
 2-Methylnaphthalene
 Concen: 0.025 ng/u1
 RT: 11.909 min Scan# 2014
 Delta R.T. -0.001 min
 Lab File: BM046326.D
 Acq: 26 Jun 2024 12:44



Tgt Ion:142 Resp: 232

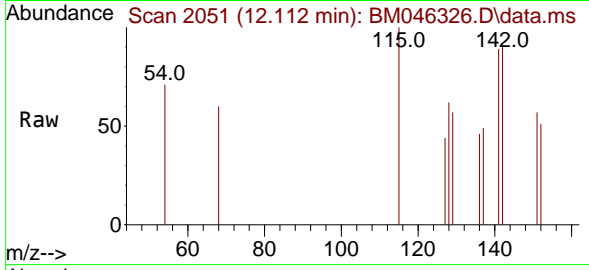
Ion	Ratio	Lower	Upper
142	100		
141	104.7	74.6	111.8





#8
 1-Methylnaphthalene
 Concen: 0.021 ng/u1
 RT: 12.112 min Scan# 2051
 Delta R.T. 0.010 min
 Lab File: BM046326.D
 Acq: 26 Jun 2024 12:44

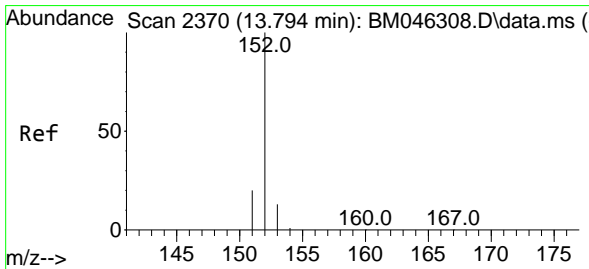
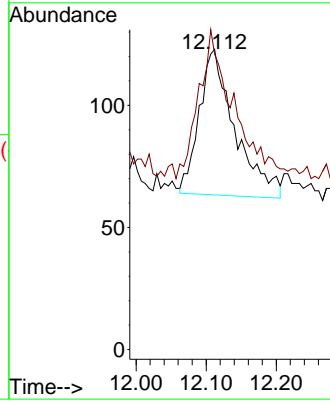
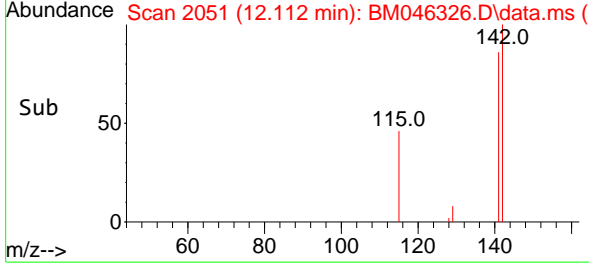
Instrument :
 BNA_M
 ClientSampleId :
 A4CP1DL



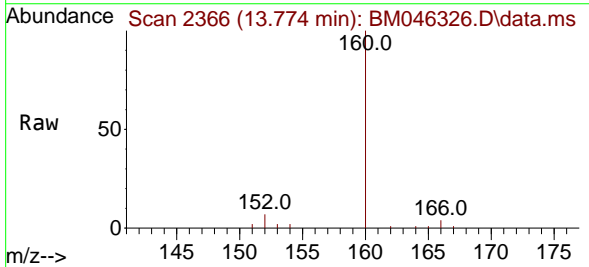
Tgt Ion:142 Resp: 211
 Ion Ratio Lower Upper
 142 100
 141 103.3 75.2 112.8

Manual Integrations
 APPROVED

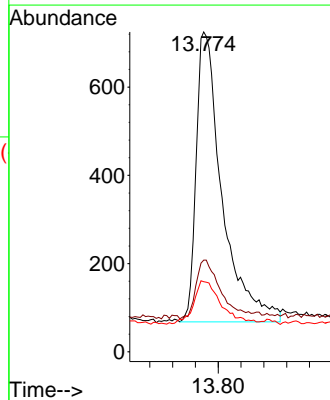
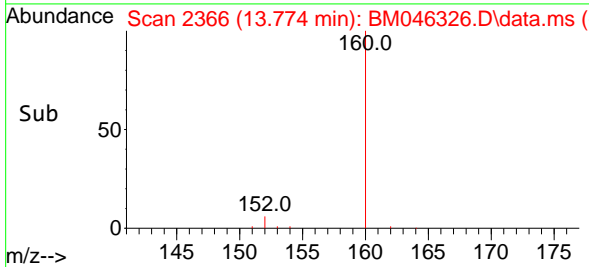
Reviewed By :Yogesh Patel 06/27/2024
 Supervised By :mohammad ahmed 06/27/2024

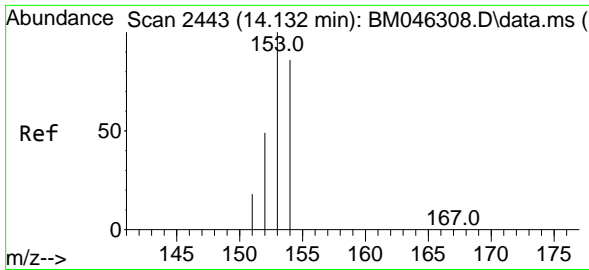


#10
 Acenaphthylene
 Concen: 0.122 ng/u1
 RT: 13.774 min Scan# 2366
 Delta R.T. -0.020 min
 Lab File: BM046326.D
 Acq: 26 Jun 2024 12:44



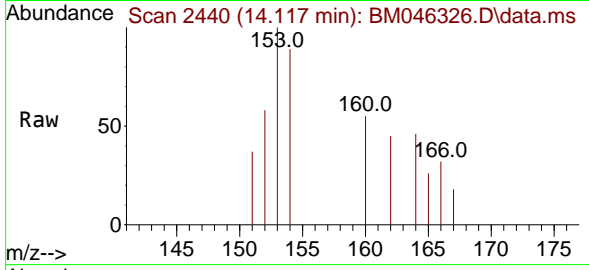
Tgt Ion:152 Resp: 2070
 Ion Ratio Lower Upper
 152 100
 151 28.7 17.4 26.2#
 153 21.9 11.8 17.8#





#11
 Acenaphthene
 Concen: 0.068 ng/u1
 RT: 14.117 min Scan# 2440
 Delta R.T. -0.015 min
 Lab File: BM046326.D
 Acq: 26 Jun 2024 12:44

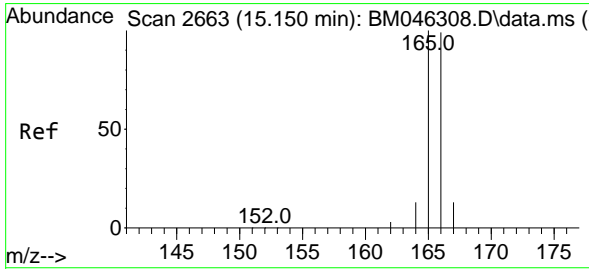
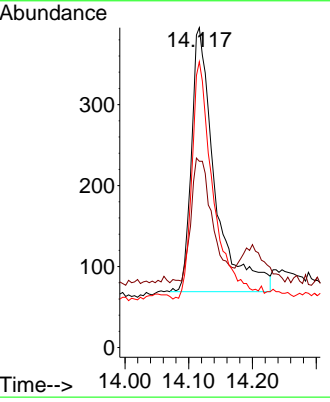
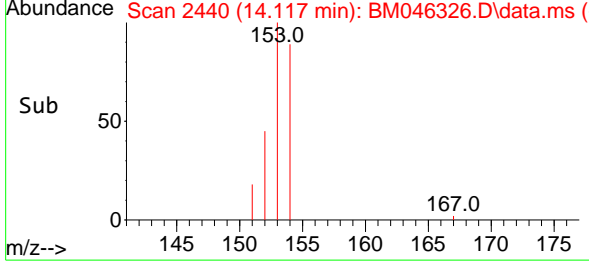
Instrument : BNA_M
 ClientSampleId : A4CP1DL



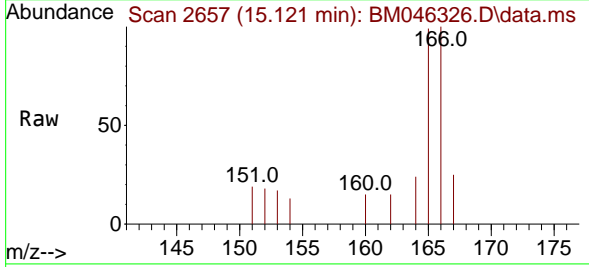
Tgt Ion:153 Resp: 830

Ion	Ratio	Lower	Upper
153	100		
152	58.2	41.3	61.9
154	89.4	68.2	102.4

Manual Integrations
APPROVED
 Reviewed By :Yogesh Patel 06/27/2024
 Supervised By :mohammad ahmed 06/27/2024

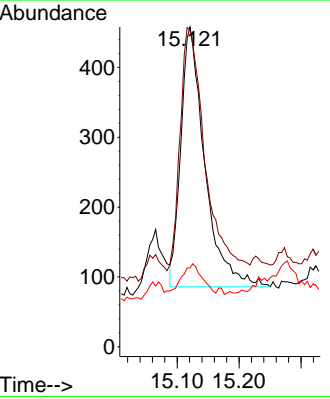
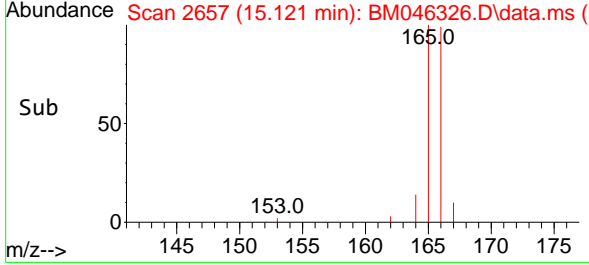


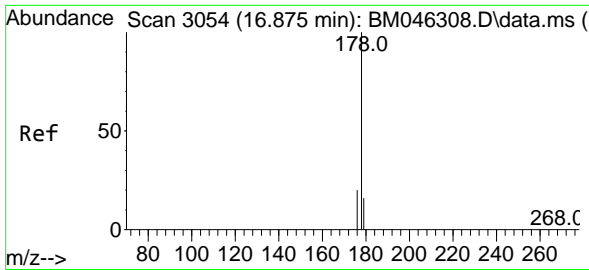
#12
 Fluorene
 Concen: 0.076 ng/u1
 RT: 15.121 min Scan# 2657
 Delta R.T. -0.029 min
 Lab File: BM046326.D
 Acq: 26 Jun 2024 12:44



Tgt Ion:166 Resp: 999

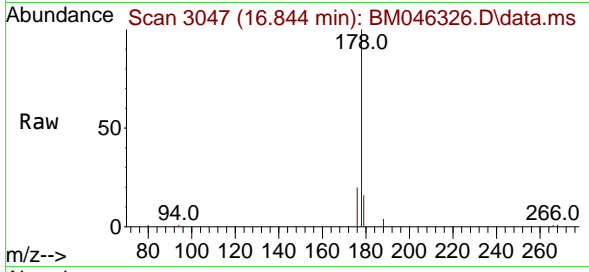
Ion	Ratio	Lower	Upper
166	100		
165	98.9	80.4	120.6
167	24.7	12.4	18.6#





#15
 Phenanthrene
 Concen: 1.133 ng/uI
 RT: 16.844 min Scan# 3069
 Delta R.T. -0.031 min
 Lab File: BM046326.D
 Acq: 26 Jun 2024 12:44

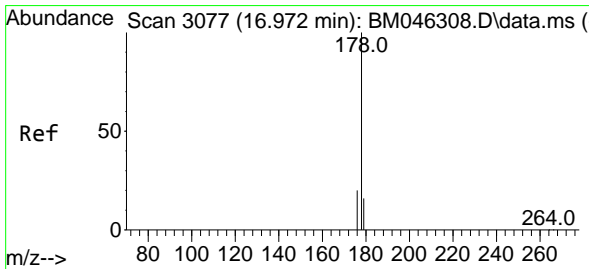
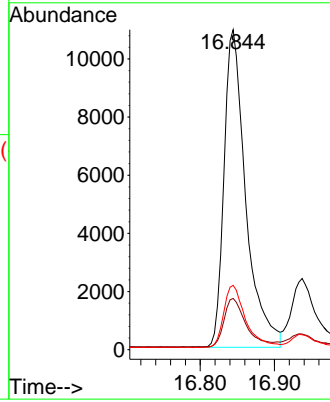
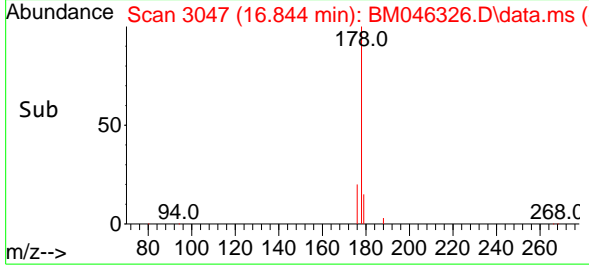
Instrument :
 BNA_M
 ClientSampleId :
 A4CP1DL



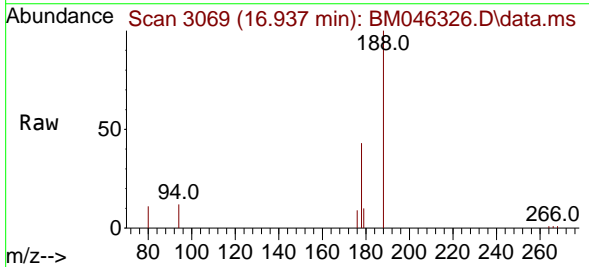
Tgt Ion:178 Resp: 2223
 Ion Ratio Lower Upper
 178 100
 179 16.0 14.2 21.2
 176 20.1 17.1 25.7

Manual Integrations
 APPROVED

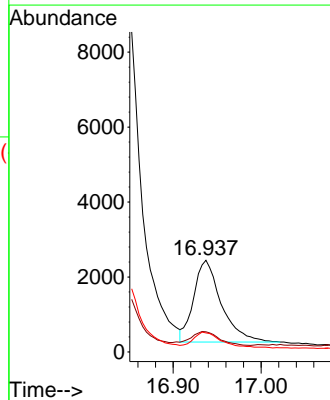
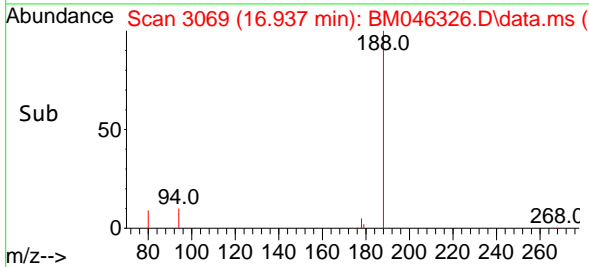
Reviewed By :Yogesh Patel 06/27/2024
 Supervised By :mohammad ahmed 06/27/2024

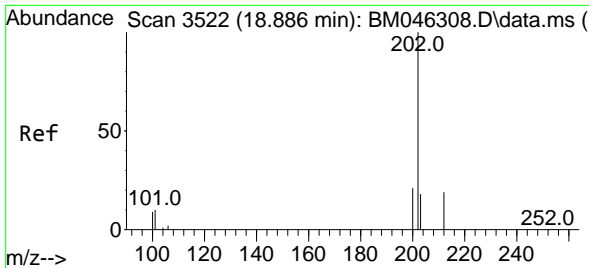


#16
 Anthracene
 Concen: 0.325 ng/uI
 RT: 16.937 min Scan# 3069
 Delta R.T. -0.035 min
 Lab File: BM046326.D
 Acq: 26 Jun 2024 12:44



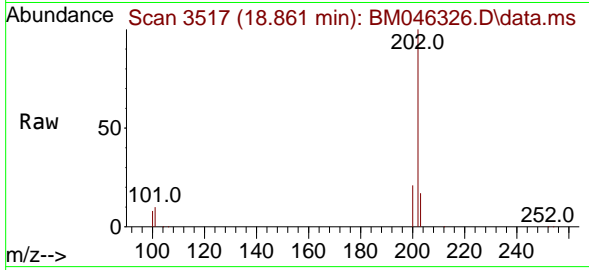
Tgt Ion:178 Resp: 4744
 Ion Ratio Lower Upper
 178 100
 179 22.0 14.9 22.3
 176 20.8 17.0 25.4





#19
 Fluoranthene
 Concen: 2.131 ng/u1
 RT: 18.861 min Scan# 3517
 Delta R.T. -0.025 min
 Lab File: BM046326.D
 Acq: 26 Jun 2024 12:44

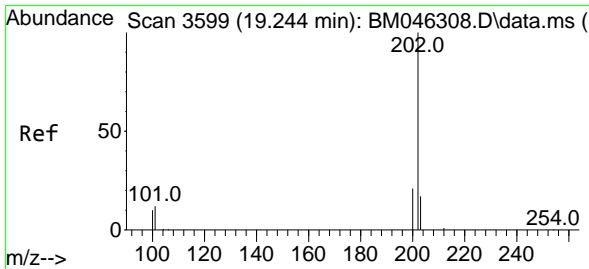
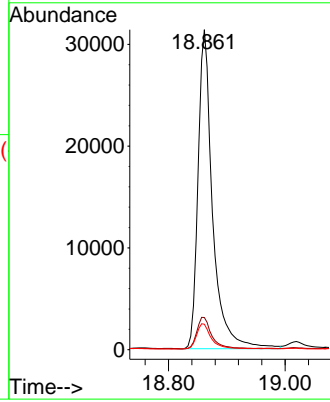
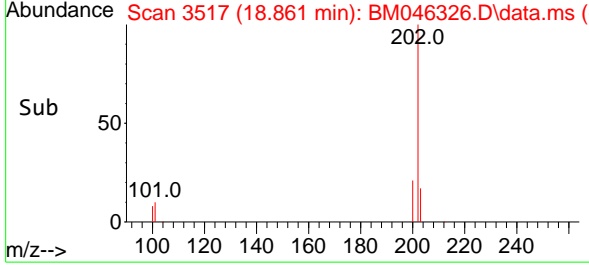
Instrument : BNA_M
 ClientSampleId : A4CP1DL



Tgt Ion:202 Resp: 5436
 Ion Ratio Lower Upper
 202 100
 101 10.0 9.6 14.4
 100 7.9 7.6 11.4

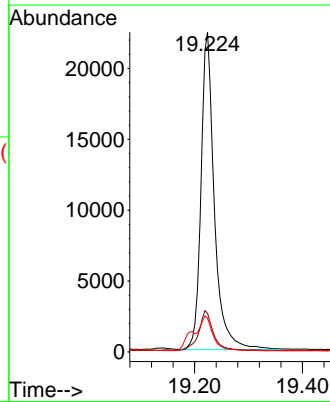
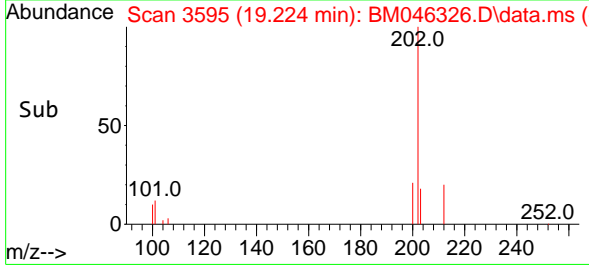
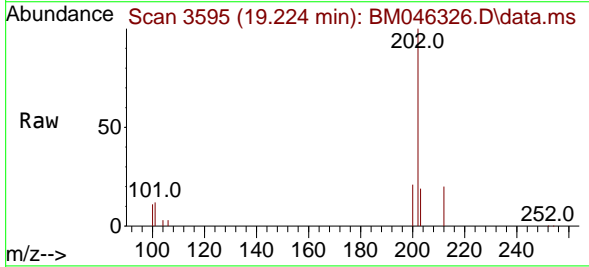
Manual Integrations
 APPROVED

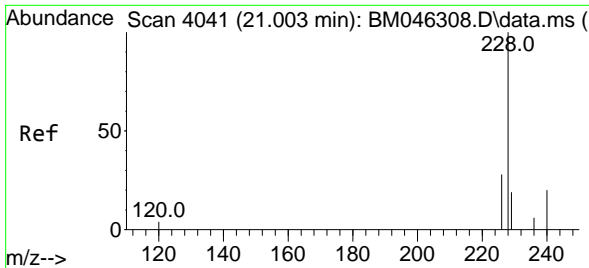
Reviewed By :Yogesh Patel 06/27/2024
 Supervised By :mohammad ahmed 06/27/2024



#20
 Pyrene
 Concen: 1.391 ng/u1
 RT: 19.224 min Scan# 3595
 Delta R.T. -0.020 min
 Lab File: BM046326.D
 Acq: 26 Jun 2024 12:44

Tgt Ion:202 Resp: 38396
 Ion Ratio Lower Upper
 202 100
 101 12.1 11.3 16.9
 100 10.6 9.8 14.6





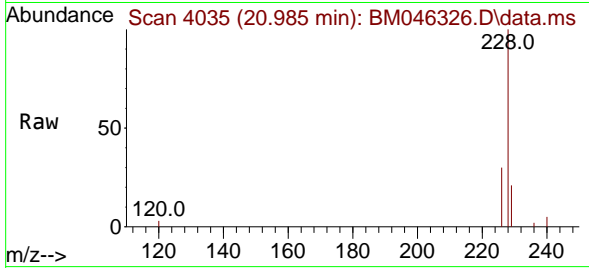
#21
 Benzo(a)anthracene
 Concen: 1.076 ng/u1
 RT: 20.985 min Scan# 4041
 Delta R.T. -0.017 min
 Lab File: BM046326.D
 Acq: 26 Jun 2024 12:44

Instrument :

BNA_M

ClientSampleId :

A4CP1DL



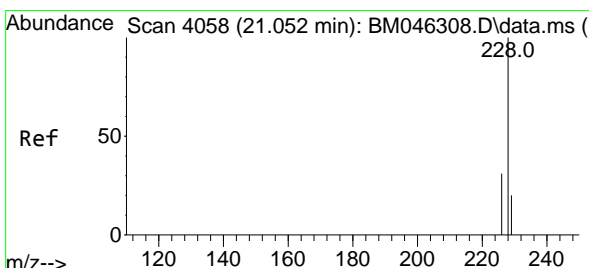
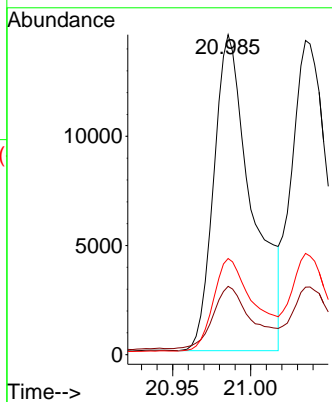
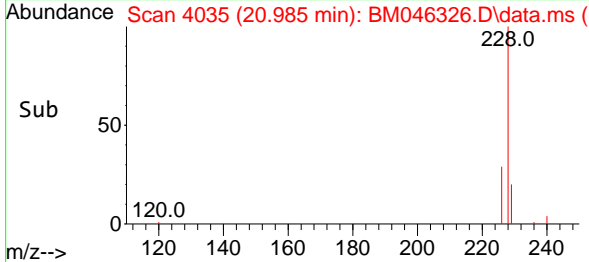
Tgt Ion:228 Resp: 24489
 Ion Ratio Lower Upper
 228 100
 229 21.3 16.4 24.6
 226 30.1 23.4 35.2

Manual Integrations

APPROVED

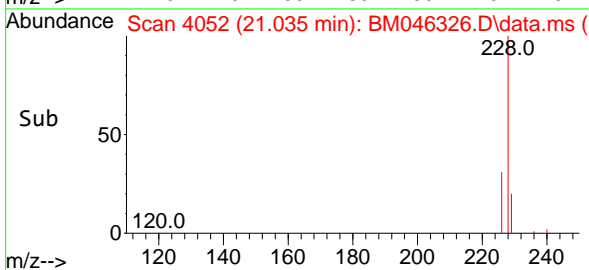
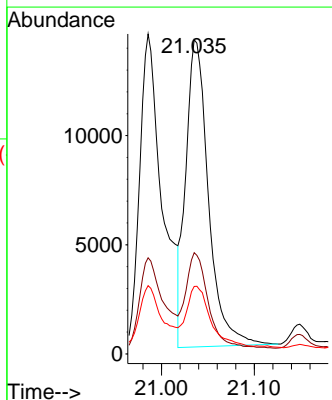
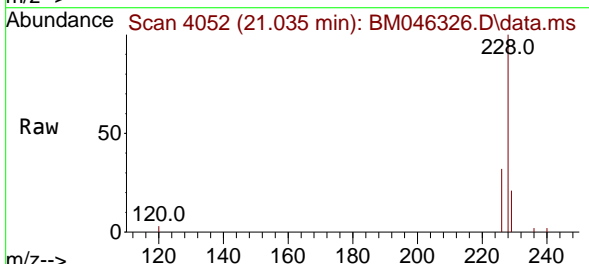
Reviewed By :Yogesh Patel 06/27/2024

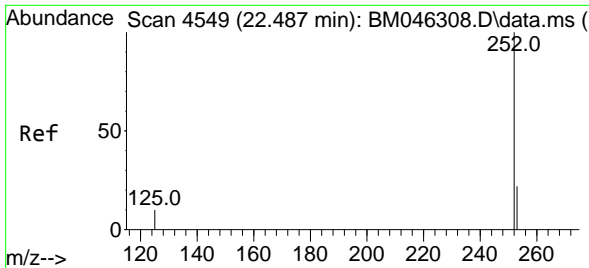
Supervised By :mohammad ahmed 06/27/2024



#22
 Chrysene
 Concen: 0.823 ng/u1
 RT: 21.035 min Scan# 4052
 Delta R.T. -0.017 min
 Lab File: BM046326.D
 Acq: 26 Jun 2024 12:44

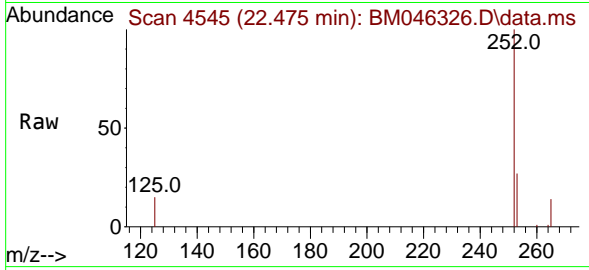
Tgt Ion:228 Resp: 23922
 Ion Ratio Lower Upper
 228 100
 226 32.2 25.2 37.8
 229 21.5 16.3 24.5





#24
 Benzo(b)fluoranthene
 Concen: 1.428 ng/ul m
 RT: 22.475 min Scan# 4545
 Delta R.T. -0.011 min
 Lab File: BM046326.D
 Acq: 26 Jun 2024 12:44

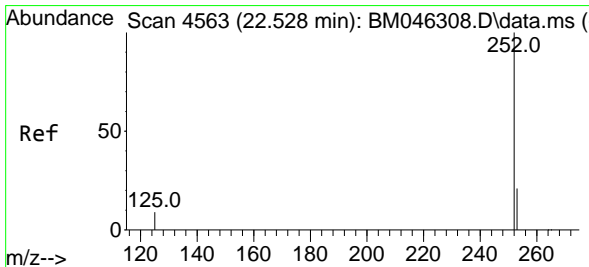
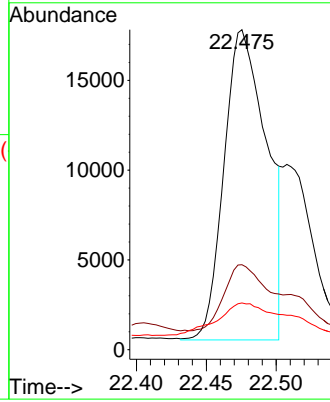
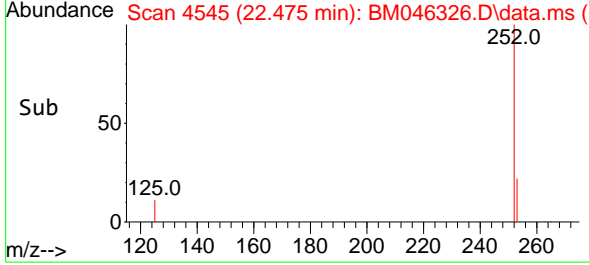
Instrument :
 BNA_M
 ClientSampleId :
 A4CP1DL



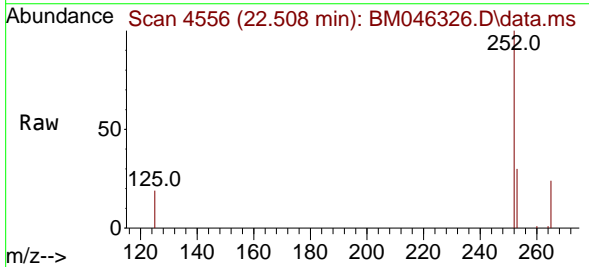
Tgt Ion:252 Resp: 36574
 Ion Ratio Lower Upper
 252 100
 253 26.5 0.0 65.8
 125 14.6 0.0 40.2

Manual Integrations
 APPROVED

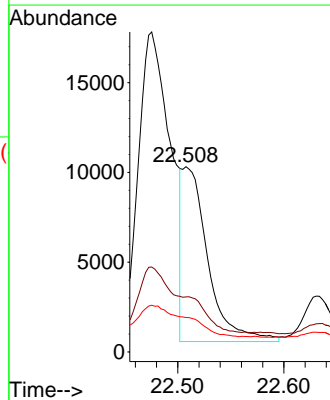
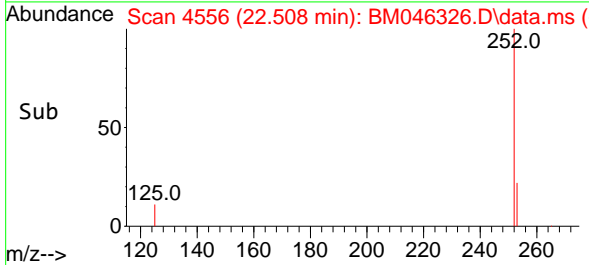
Reviewed By :Yogesh Patel 06/27/2024
 Supervised By :mohammad ahmed 06/27/2024

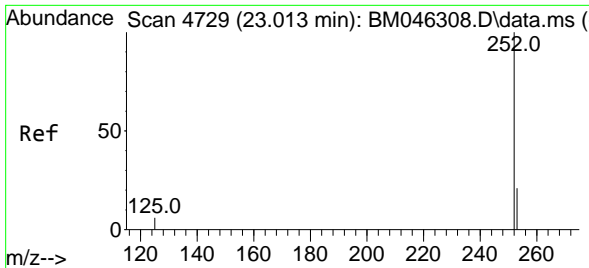


#25
 Benzo(k)fluoranthene
 Concen: 0.542 ng/ul m
 RT: 22.508 min Scan# 4556
 Delta R.T. -0.020 min
 Lab File: BM046326.D
 Acq: 26 Jun 2024 12:44



Tgt Ion:252 Resp: 16495
 Ion Ratio Lower Upper
 252 100
 253 29.8 27.2 40.8
 125 18.6 16.6 25.0





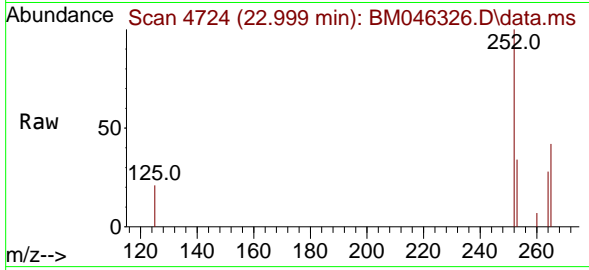
#26
 Benzo(a)pyrene
 Concen: 0.548 ng/u1
 RT: 22.999 min Scan# 41
 Delta R.T. -0.014 min
 Lab File: BM046326.D
 Acq: 26 Jun 2024 12:44

Instrument :

BNA_M

ClientSampleId :

A4CP1DL



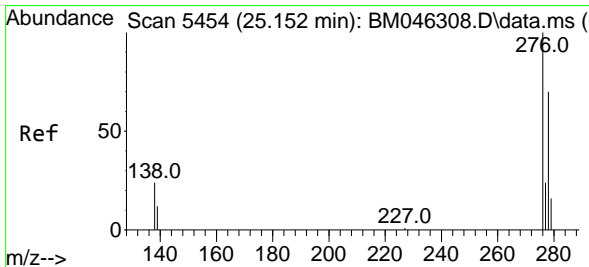
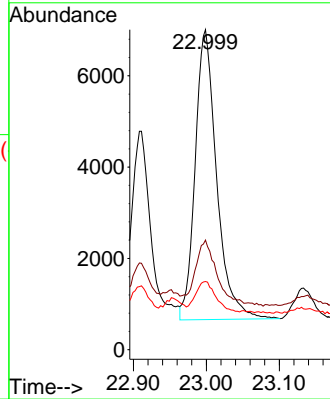
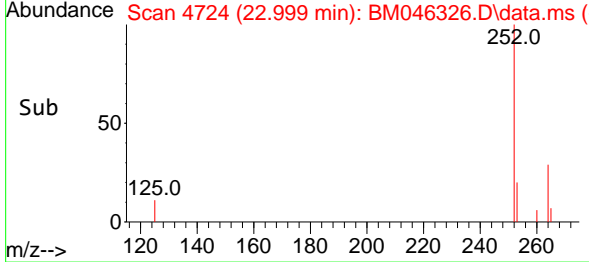
Tgt Ion:252 Resp: 1300
 Ion Ratio Lower Upper
 252 100
 253 34.2 32.1 48.1
 125 21.3 21.2 31.8

Manual Integrations

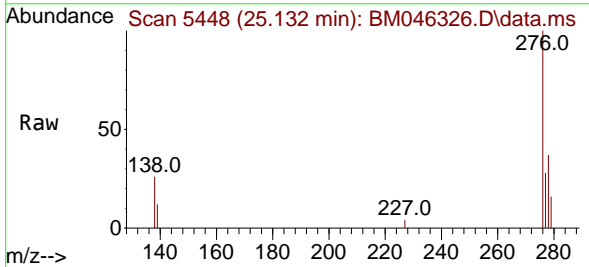
APPROVED

Reviewed By :Yogesh Patel 06/27/2024

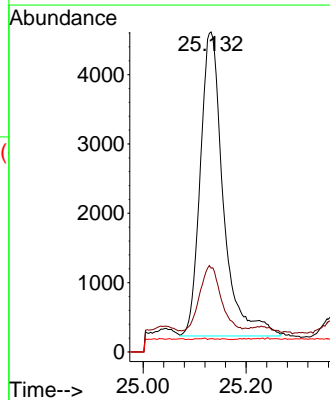
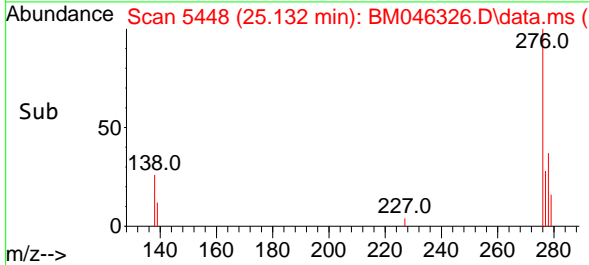
Supervised By :mohammad ahmed 06/27/2024

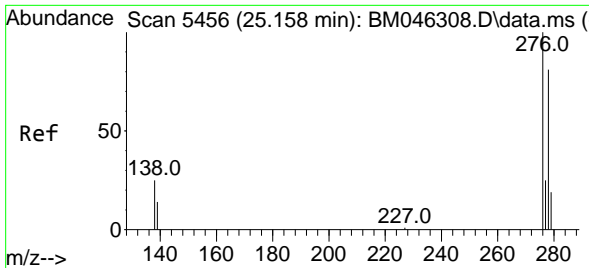


#27
 Indeno(1,2,3-cd)pyrene
 Concen: 0.350 ng/u1 m
 RT: 25.132 min Scan# 5448
 Delta R.T. -0.020 min
 Lab File: BM046326.D
 Acq: 26 Jun 2024 12:44



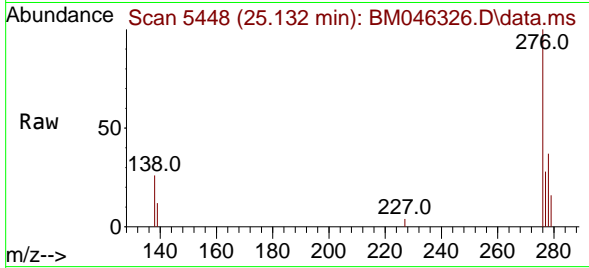
Tgt Ion:276 Resp: 13577
 Ion Ratio Lower Upper
 276 100
 138 33.8 21.0 31.4#
 227 0.0 0.0 0.0





#28
 Dibenzo(a,h)anthracene
 Concen: 0.162 ng/ul m
 RT: 25.132 min Scan# 54
 Delta R.T. -0.026 min
 Lab File: BM046326.D
 Acq: 26 Jun 2024 12:44

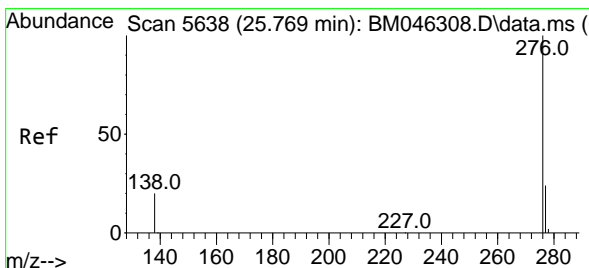
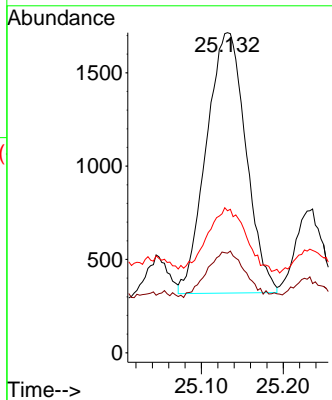
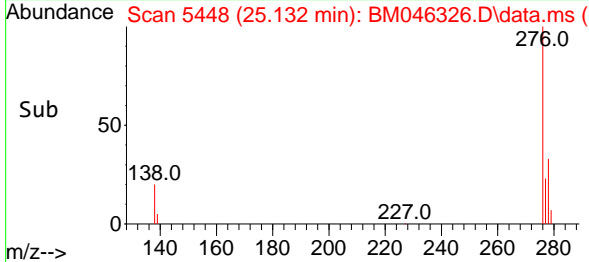
Instrument :
 BNA_M
 ClientSampleId :
 A4CP1DL



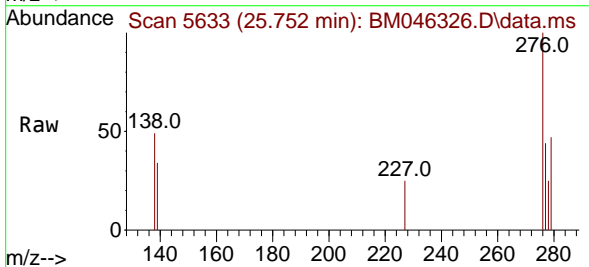
Tgt Ion:278 Resp: 4670
 Ion Ratio Lower Upper
 278 100
 139 31.1 17.6 26.4#
 279 44.4 26.3 39.5#

Manual Integrations
 APPROVED

Reviewed By :Yogesh Patel 06/27/2024
 Supervised By :mohammad ahmed 06/27/2024



#29
 Benzo(g,h,i)perylene
 Concen: 0.061 ng/ul
 RT: 25.752 min Scan# 5633
 Delta R.T. -0.016 min
 Lab File: BM046326.D
 Acq: 26 Jun 2024 12:44



Tgt Ion:276 Resp: 2032
 Ion Ratio Lower Upper
 276 100
 138 48.7 21.7 32.5#
 277 43.8 20.4 30.6#

