

Data Path : Z:\svoasrv\HPCHEM1\BNA_M\Data\BM062724\
 Data File : BM046340.D
 Acq On : 27 Jun 2024 20:13
 Operator : MA/JU
 Sample : SSTDICC060
 Misc :
 ALS Vial : 8 Sample Multiplier: 1

Instrument :
 BNA_M
 ClientSampleId :
 SSTDICC060

Quant Time: Jun 28 02:13:36 2024
 Quant Method : Z:\svoasrv\HPCHEM1\BNA_M\Methods\8270-BM062724.M
 Quant Title : ASP BNA STANDARDS FOR 5 POINT CALIBRATION
 QLast Update : Fri Jun 28 02:03:36 2024
 Response via : Initial Calibration

Compound	R.T.	QIon	Response	Conc Units	Dev(Min)	
Internal Standards						
1) 1,4-Dichlorobenzene-d4	7.369	152	180152	20.000 ng	0.00	
21) Naphthalene-d8	10.128	136	791470	20.000 ng	0.00	
39) Acenaphthene-d10	14.022	164	480638	20.000 ng	0.00	
64) Phenanthrene-d10	16.774	188	856201	20.000 ng	0.00	
76) Chrysene-d12	20.998	240	581647	20.000 ng	0.00	
86) Perylene-d12	23.668	264	583289	20.000 ng	0.00	
System Monitoring Compounds						
5) 2-Fluorophenol	5.052	112	1386322	137.199 ng	0.00	
7) Phenol-d6	6.640	99	1961571	144.597 ng	0.00	
23) Nitrobenzene-d5	8.546	82	2346428	161.269 ng	0.00	
42) 2,4,6-Tribromophenol	15.533	330	696893	136.892 ng	0.00	
45) 2-Fluorobiphenyl	12.639	172	4717088	157.737 ng	0.00	
79) Terphenyl-d14	19.433	244	5268880	166.727 ng	0.00	
Target Compounds						
2) 1,4-Dioxane	3.034	88	243305	58.012 ng		Qvalue 97
3) Pyridine	3.422	79	630253	54.863 ng		97
4) n-Nitrosodimethylamine	3.340	42	556372	85.849 ng		99
6) Aniline	6.746	93	839196	64.679 ng		100
8) 2-Chlorophenol	6.969	128	763475	68.990 ng		99
9) Benzaldehyde	6.552	77	439443	53.175 ng		96
10) Phenol	6.663	94	962470	70.203 ng		98
11) bis(2-Chloroethyl)ether	6.840	93	767733	64.613 ng		99
12) 1,3-Dichlorobenzene	7.263	146	844644	64.043 ng		98
13) 1,4-Dichlorobenzene	7.404	146	860754	64.715 ng		99
14) 1,2-Dichlorobenzene	7.722	146	839911	67.587 ng		100
15) Benzyl Alcohol	7.657	79	831595	78.497 ng		98
16) 2,2'-oxybis(1-Chloropr...	7.916	45	1272298	68.991 ng		99
17) 2-Methylphenol	7.875	107	672892	70.803 ng		99
18) Hexachloroethane	8.428	117	388875	75.319 ng		99
19) n-Nitroso-di-n-propyla...	8.204	70	788577	82.682 ng		93
20) 3+4-Methylphenols	8.204	107	1012852	80.035 ng	#	86
22) Acetophenone	8.210	105	1434247	78.354 ng	#	98
24) Nitrobenzene	8.587	77	1137465	76.865 ng		99
25) Isophorone	9.104	82	1952604	72.094 ng		99
26) 2-Nitrophenol	9.275	139	458418	77.787 ng		98
27) 2,4-Dimethylphenol	9.381	122	528608	63.990 ng		98
28) bis(2-Chloroethoxy)met...	9.581	93	1124925	67.456 ng		99
29) 2,4-Dichlorophenol	9.816	162	740681	65.567 ng		99
30) 1,2,4-Trichlorobenzene	9.998	180	812261	63.498 ng		99
31) Naphthalene	10.181	128	2686710	68.519 ng		99
32) Benzoic acid	9.681	122	623696	88.784 ng		97
33) 4-Chloroaniline	10.345	127	955587	63.841 ng		99
34) Hexachlorobutadiene	10.463	225	506950	64.641 ng		98
35) Caprolactam	11.204	113	193080	52.847 ng		96
36) 4-Chloro-3-methylphenol	11.498	107	870598	67.775 ng		99
37) 2-Methylnaphthalene	11.798	142	1814737	66.440 ng		99
38) 1-Methylnaphthalene	12.028	142	1802544	66.887 ng		100
40) 1,2,4,5-Tetrachloroben...	12.181	216	837499	67.566 ng		100
41) Hexachlorocyclopentadiene	12.157	237	361189	69.622 ng		96
43) 2,4,6-Trichlorophenol	12.451	196	578670	69.175 ng		97

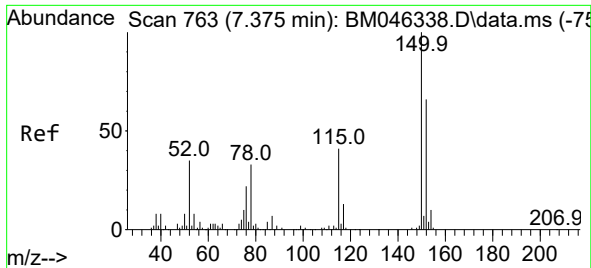
Data Path : Z:\svoasrv\HPCHEM1\BNA_M\Data\BM062724\
 Data File : BM046340.D
 Acq On : 27 Jun 2024 20:13
 Operator : MA/JU
 Sample : SSTDICC060
 Misc :
 ALS Vial : 8 Sample Multiplier: 1

Instrument :
 BNA_M
 ClientSampleId :
 SSTDICC060

Quant Time: Jun 28 02:13:36 2024
 Quant Method : Z:\svoasrv\HPCHEM1\BNA_M\Methods\8270-BM062724.M
 Quant Title : ASP BNA STANDARDS FOR 5 POINT CALIBRATION
 QLast Update : Fri Jun 28 02:03:36 2024
 Response via : Initial Calibration

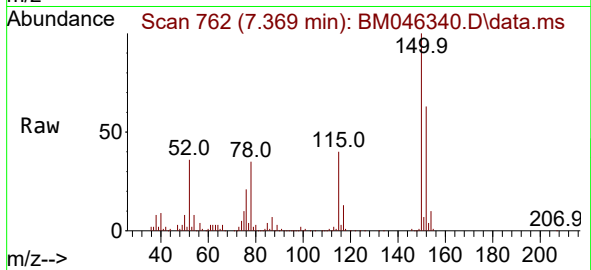
Compound	R.T.	QIon	Response	Conc	Units	Dev(Min)
44) 2,4,5-Trichlorophenol	12.539	196	631149	67.790	ng	98
46) 1,1'-Biphenyl	12.845	154	2322493	71.686	ng	99
47) 2-Chloronaphthalene	12.881	162	1792198	70.684	ng	100
48) 2-Nitroaniline	13.139	65	697535	87.186	ng	99
49) Acenaphthylene	13.745	152	2742906	71.343	ng	99
50) Dimethylphthalate	13.528	163	2158994	66.407	ng	99
51) 2,6-Dinitrotoluene	13.639	165	483824	69.337	ng	97
52) Acenaphthene	14.086	154	1692334	70.220	ng	99
53) 3-Nitroaniline	13.986	138	482111	67.741	ng	95
54) 2,4-Dinitrophenol	14.186	184	266122	82.731	ng	94
55) Dibenzofuran	14.428	168	2689962	70.801	ng	100
56) 4-Nitrophenol	14.351	139	356613	58.936	ng	98
57) 2,4-Dinitrotoluene	14.439	165	693422	74.833	ng	86
58) Fluorene	15.080	166	2320643	74.733	ng	99
59) 2,3,4,6-Tetrachlorophenol	14.680	232	495439	64.040	ng	100
60) Diethylphthalate	14.892	149	2309122	67.972	ng	100
61) 4-Chlorophenyl-phenyle...	15.080	204	1114276	73.326	ng	100
62) 4-Nitroaniline	15.175	138	443224	62.696	ng	99
63) Azobenzene	15.380	77	2707833	82.260	ng	99
65) 4,6-Dinitro-2-methylph...	15.204	198	338902	86.282	ng	95
66) n-Nitrosodiphenylamine	15.316	169	1704031	77.740	ng	99
67) 4-Bromophenyl-phenylether	15.980	248	595297	73.178	ng	97
68) Hexachlorobenzene	16.086	284	680637	70.239	ng	97
69) Atrazine	16.292	200	361298	53.979	ng	99
70) Pentachlorophenol	16.451	266	427039	72.238	ng	99
71) Phenanthrene	16.821	178	2859327	70.754	ng	100
72) Anthracene	16.916	178	2786734	70.139	ng	100
73) Carbazole	17.210	167	2555613	64.281	ng	99
74) Di-n-butylphthalate	17.768	149	3609490	73.114	ng	99
75) Fluoranthene	18.845	202	2927937	59.420	ng	100
77) Benzidine	19.063	184	495750	49.913	ng	99
78) Pyrene	19.210	202	2979469	72.615	ng	99
80) Butylbenzylphthalate	20.139	149	1319348	74.234	ng	97
81) Benzo(a)anthracene	20.980	228	2380969	64.269	ng	99
82) 3,3'-Dichlorobenzidine	20.927	252	718605	56.602	ng	97
83) Chrysene	21.039	228	2231576	64.220	ng	99
84) Bis(2-ethylhexyl)phtha...	20.927	149	2014150	80.708	ng	99
85) Di-n-octyl phthalate	21.939	149	2923111	67.164	ng	99
87) Indeno(1,2,3-cd)pyrene	26.633	276	2431983	72.462	ng	100
88) Benzo(b)fluoranthene	22.845	252	2240523	67.736	ng	100
89) Benzo(k)fluoranthene	22.898	252	2142375	68.237	ng	99
90) Benzo(a)pyrene	23.550	252	1931920	67.215	ng	98
91) Dibenzo(a,h)anthracene	26.674	278	2029246	72.989	ng	99
92) Benzo(g,h,i)perylene	27.556	276	2049897	71.077	ng	99

(#) = qualifier out of range (m) = manual integration (+) = signals summed

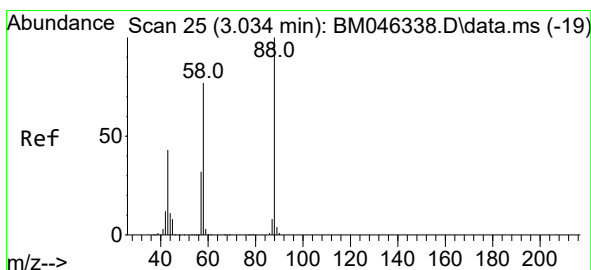
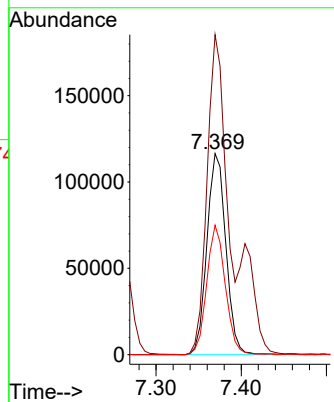
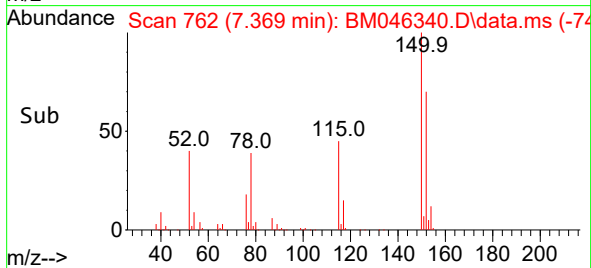


#1
 1,4-Dichlorobenzene-d4
 Concen: 20.000 ng
 RT: 7.369 min Scan# 70
 Delta R.T. -0.006 min
 Lab File: BM046340.D
 Acq: 27 Jun 2024 20:13

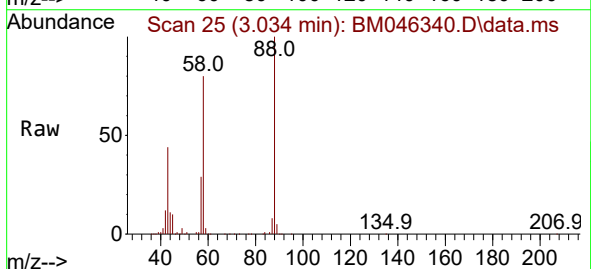
Instrument :
 BNA_M
 ClientSampleId :
 SSTDICC060



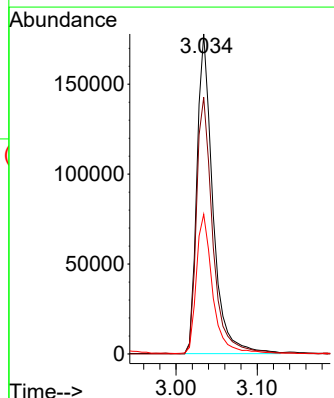
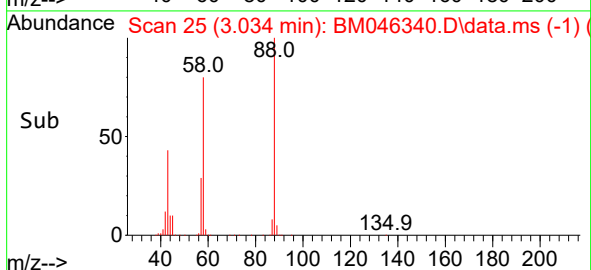
Tgt Ion:152 Resp: 180152
 Ion Ratio Lower Upper
 152 100
 150 159.1 122.1 183.1
 115 64.4 50.2 75.4

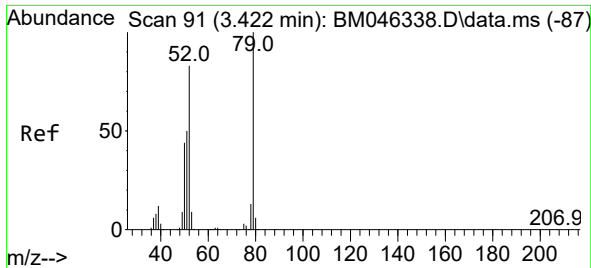


#2
 1,4-Dioxane
 Concen: 58.012 ng
 RT: 3.034 min Scan# 25
 Delta R.T. 0.000 min
 Lab File: BM046340.D
 Acq: 27 Jun 2024 20:13



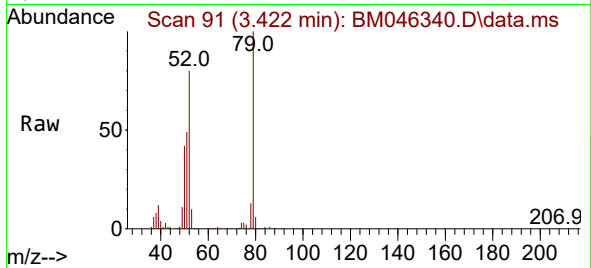
Tgt Ion: 88 Resp: 243305
 Ion Ratio Lower Upper
 88 100
 58 82.6 65.2 97.8
 43 44.5 38.4 57.6



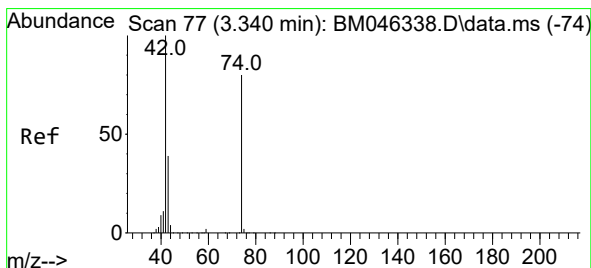
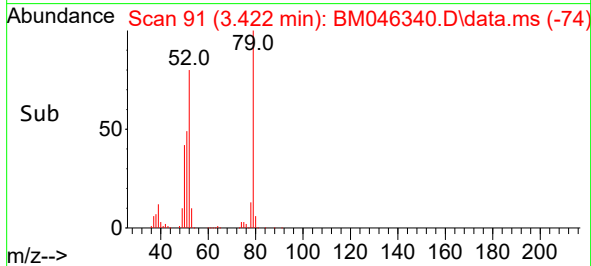
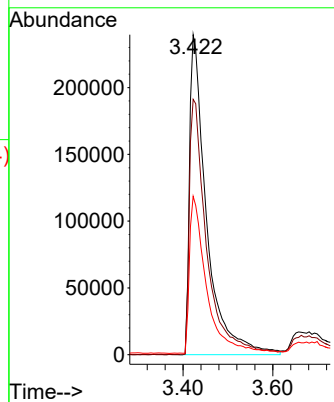


#3
 Pyridine
 Concen: 54.863 ng
 RT: 3.422 min Scan# 91
 Delta R.T. 0.000 min
 Lab File: BM046340.D
 Acq: 27 Jun 2024 20:13

Instrument :
 BNA_M
 ClientSampleId :
 SSTDICC060

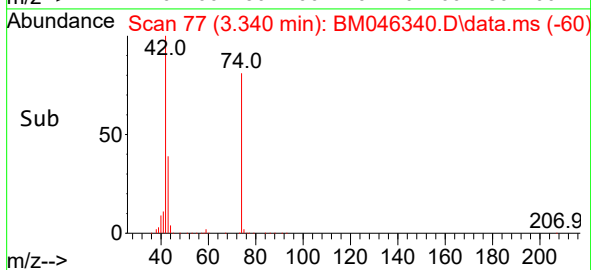
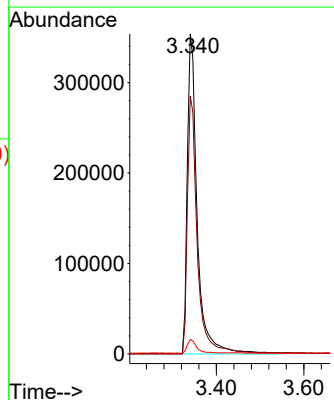
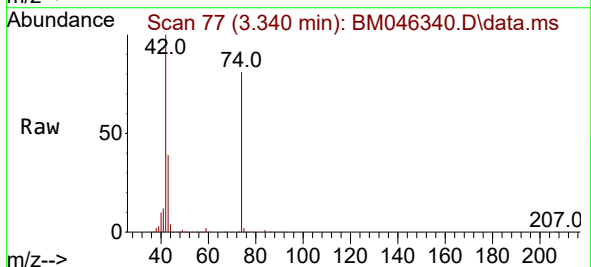


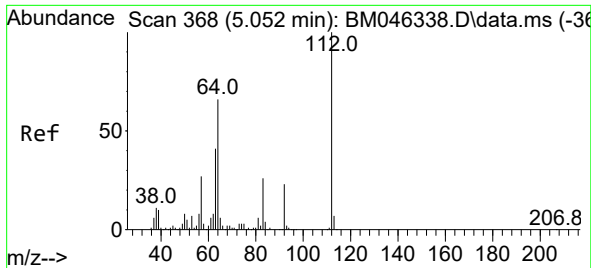
Tgt Ion: 79 Resp: 630253
 Ion Ratio Lower Upper
 79 100
 52 79.8 66.4 99.6
 51 49.5 40.8 61.2



#4
 n-Nitrosodimethylamine
 Concen: 85.849 ng
 RT: 3.340 min Scan# 77
 Delta R.T. 0.000 min
 Lab File: BM046340.D
 Acq: 27 Jun 2024 20:13

Tgt Ion: 42 Resp: 556372
 Ion Ratio Lower Upper
 42 100
 74 80.5 63.6 95.4
 44 4.5 3.8 5.6





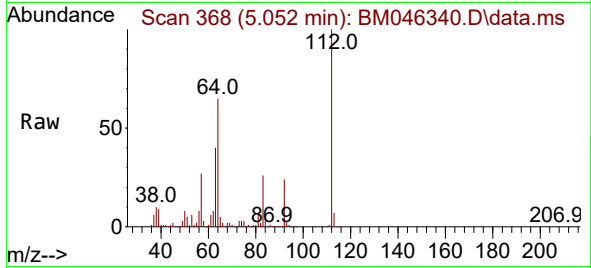
#5
 2-Fluorophenol
 Concen: 137.199 ng
 RT: 5.052 min Scan# 30
 Delta R.T. 0.000 min
 Lab File: BM046340.D
 Acq: 27 Jun 2024 20:13

Instrument :

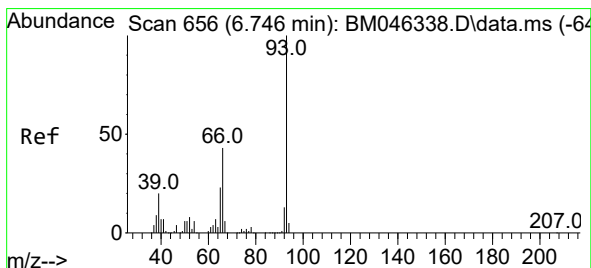
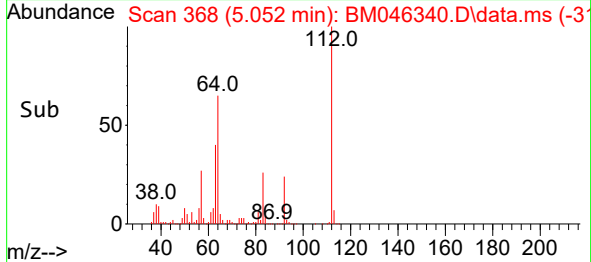
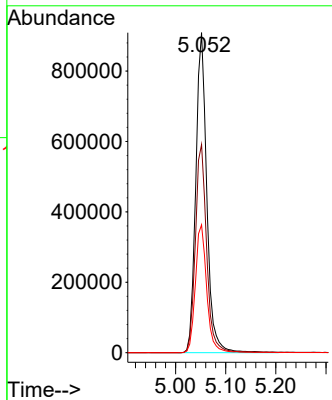
BNA_M

ClientSampleId :

SSTDICC060

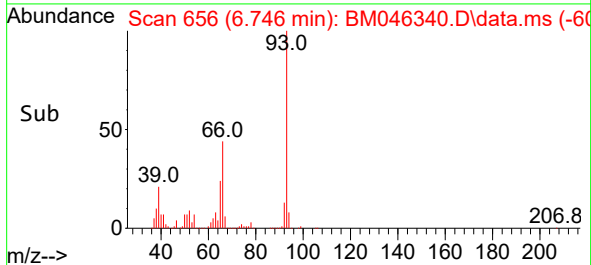
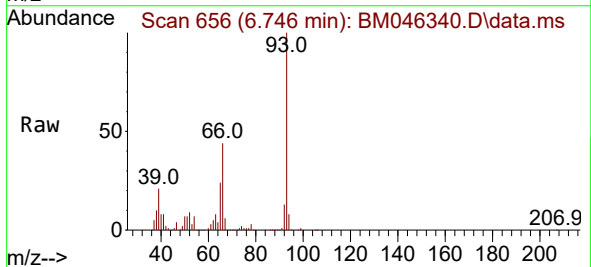
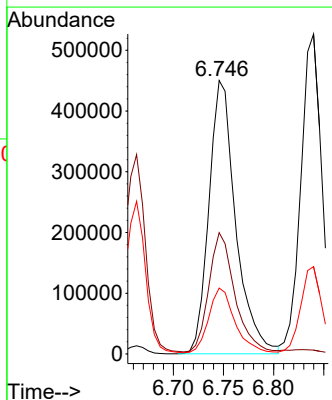


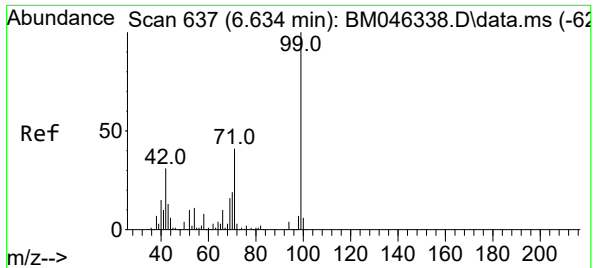
Tgt Ion:112 Resp: 1386322
 Ion Ratio Lower Upper
 112 100
 64 65.0 52.8 79.2
 63 39.9 32.9 49.3



#6
 Aniline
 Concen: 64.679 ng
 RT: 6.746 min Scan# 656
 Delta R.T. 0.000 min
 Lab File: BM046340.D
 Acq: 27 Jun 2024 20:13

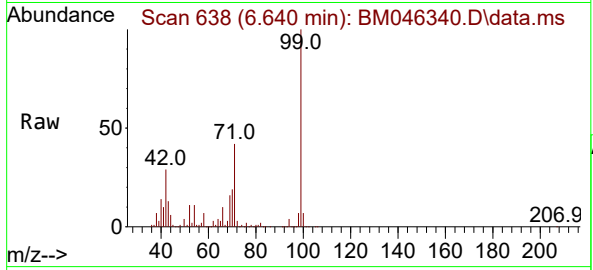
Tgt Ion: 93 Resp: 839196
 Ion Ratio Lower Upper
 93 100
 66 44.3 35.5 53.3
 65 24.1 19.3 28.9





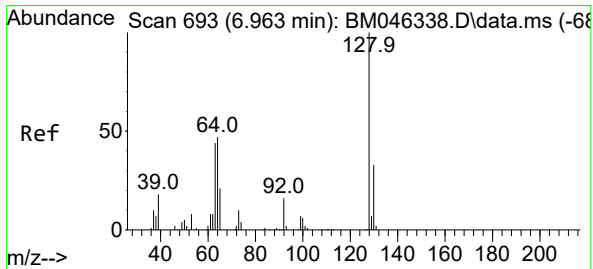
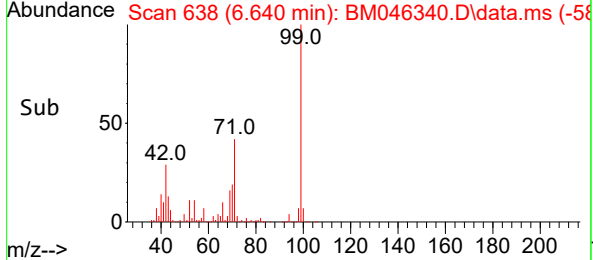
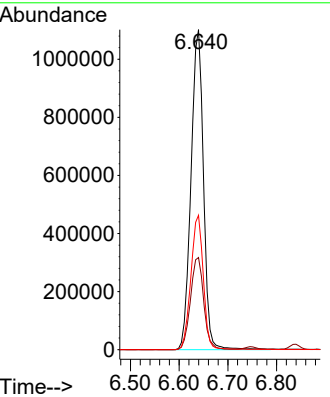
#7
Phenol-d6
Concen: 144.597 ng
RT: 6.640 min Scan# 611
Delta R.T. 0.006 min
Lab File: BM046340.D
Acq: 27 Jun 2024 20:13

Instrument : BNA_M
ClientSampleId : SSTDICC060



Tgt Ion: 99 Resp: 1961571

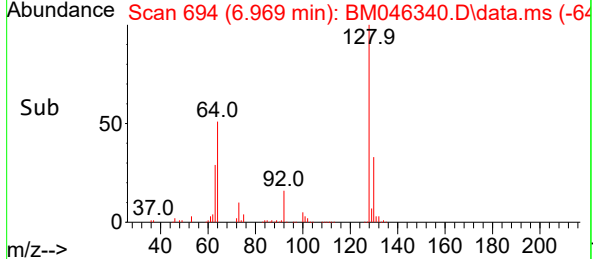
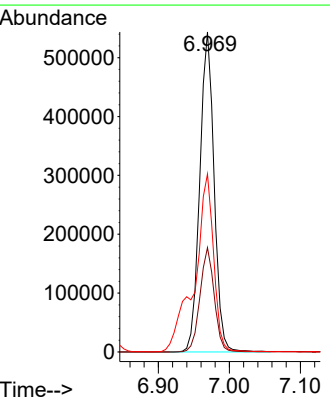
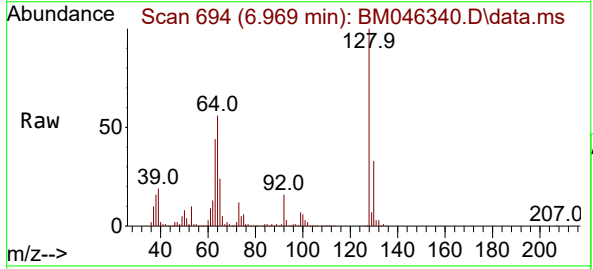
Ion	Ratio	Lower	Upper
99	100		
42	28.8	24.8	37.2
71	42.0	33.1	49.7

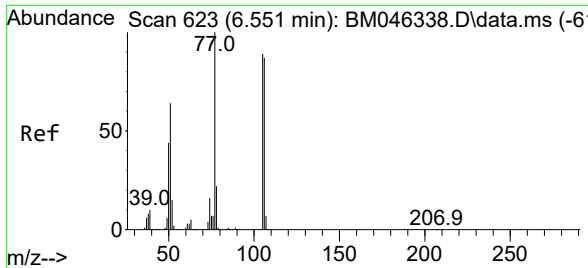


#8
2-Chlorophenol
Concen: 68.990 ng
RT: 6.969 min Scan# 694
Delta R.T. 0.006 min
Lab File: BM046340.D
Acq: 27 Jun 2024 20:13

Tgt Ion: 128 Resp: 763475

Ion	Ratio	Lower	Upper
128	100		
130	32.6	13.0	53.0
64	55.6	36.5	76.5



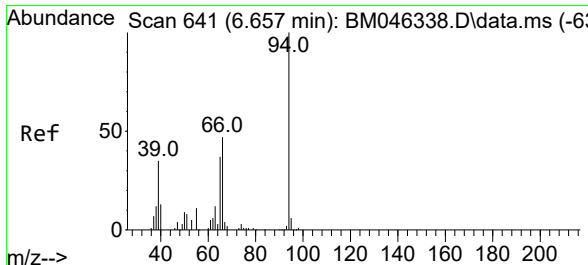
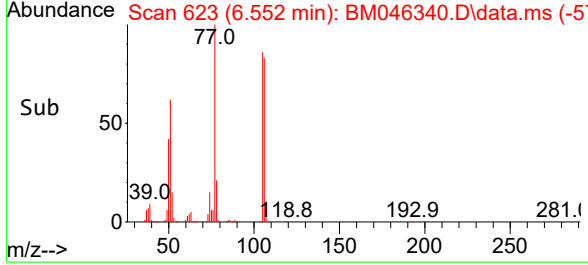
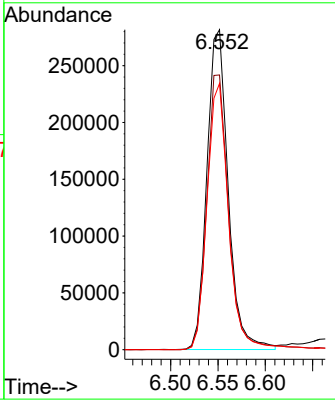
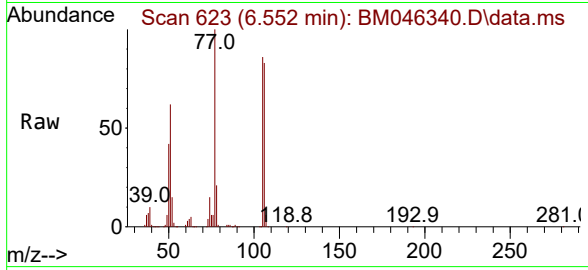


#9
 Benzaldehyde
 Concen: 53.175 ng
 RT: 6.552 min Scan# 61
 Delta R.T. 0.000 min
 Lab File: BM046340.D
 Acq: 27 Jun 2024 20:13

Instrument : BNA_M
 ClientSampleId : SSTDICC060

Tgt Ion: 77 Resp: 439443

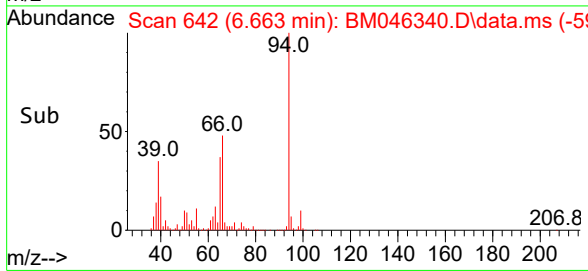
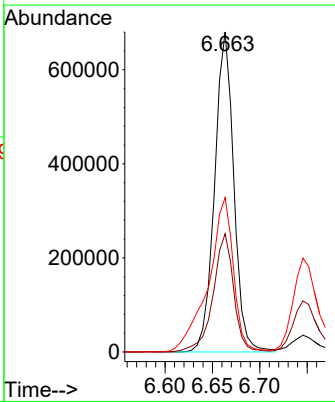
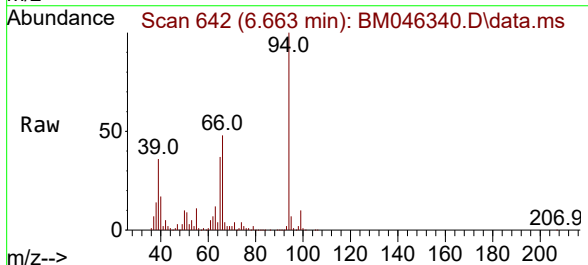
Ion	Ratio	Lower	Upper
77	100		
105	85.8	69.2	109.2
106	83.2	66.9	106.9

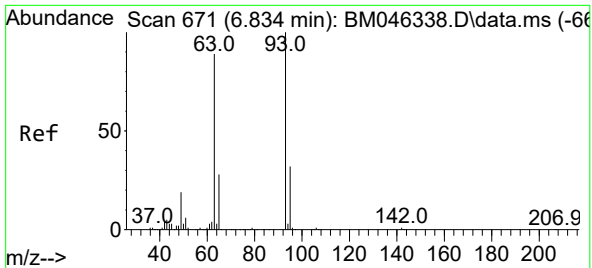


#10
 Phenol
 Concen: 70.203 ng
 RT: 6.663 min Scan# 642
 Delta R.T. 0.006 min
 Lab File: BM046340.D
 Acq: 27 Jun 2024 20:13

Tgt Ion: 94 Resp: 962470

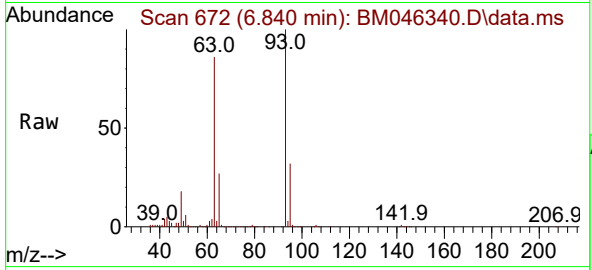
Ion	Ratio	Lower	Upper
94	100		
65	36.9	17.6	57.6
66	48.2	29.9	69.9





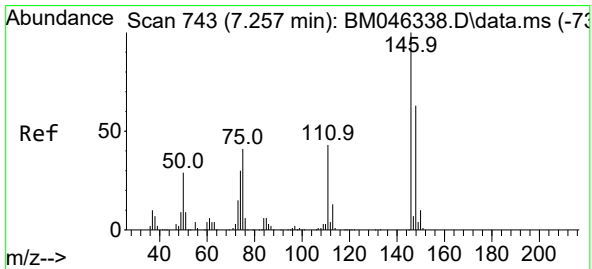
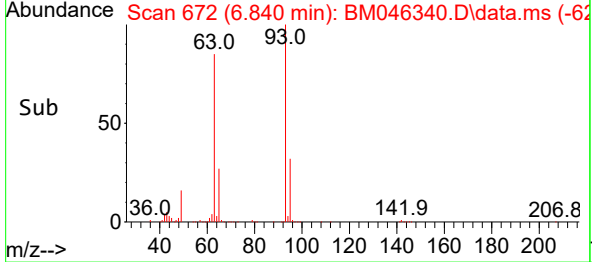
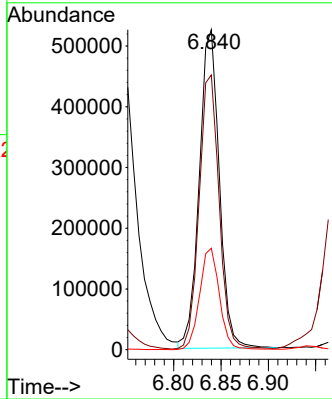
#11
 bis(2-Chloroethyl)ether
 Concen: 64.613 ng
 RT: 6.840 min Scan# 61
 Delta R.T. 0.006 min
 Lab File: BM046340.D
 Acq: 27 Jun 2024 20:13

Instrument : BNA_M
 ClientSampleId : SSTDICC060



Tgt Ion: 93 Resp: 767733

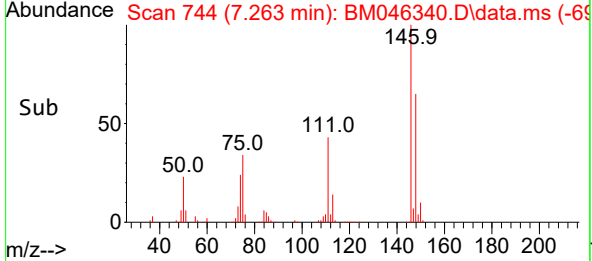
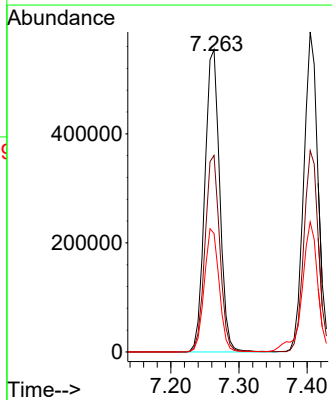
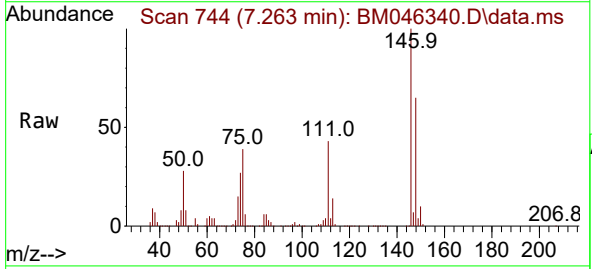
Ion	Ratio	Lower	Upper
93	100		
63	85.9	67.2	107.2
95	31.7	11.4	51.4

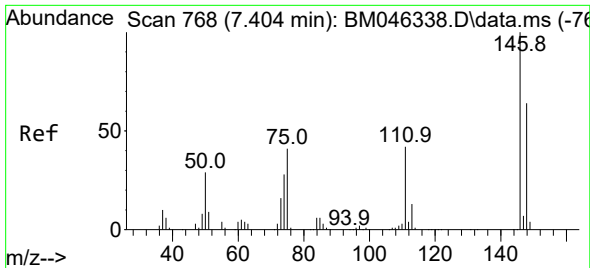


#12
 1,3-Dichlorobenzene
 Concen: 64.043 ng
 RT: 7.263 min Scan# 744
 Delta R.T. 0.006 min
 Lab File: BM046340.D
 Acq: 27 Jun 2024 20:13

Tgt Ion: 146 Resp: 844644

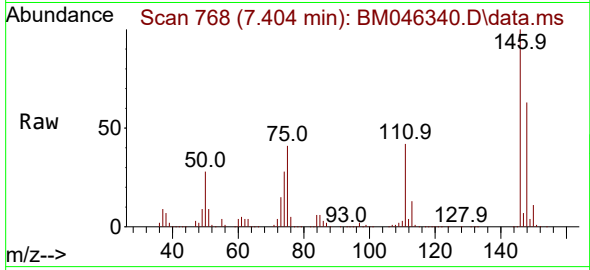
Ion	Ratio	Lower	Upper
146	100		
148	65.0	50.6	75.8
75	39.2	32.6	49.0



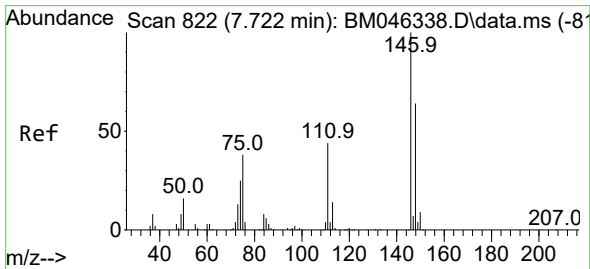
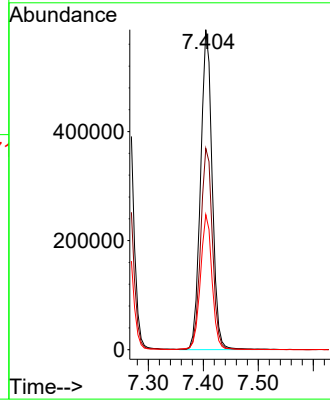
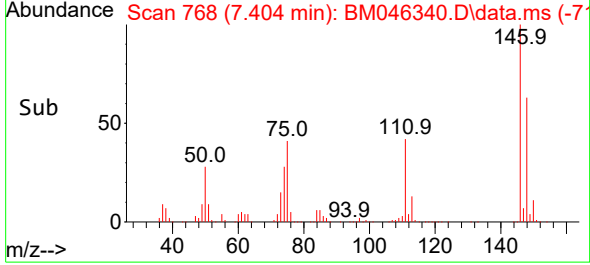


#13
 1,4-Dichlorobenzene
 Concen: 64.715 ng
 RT: 7.404 min Scan# 768
 Delta R.T. 0.000 min
 Lab File: BM046340.D
 Acq: 27 Jun 2024 20:13

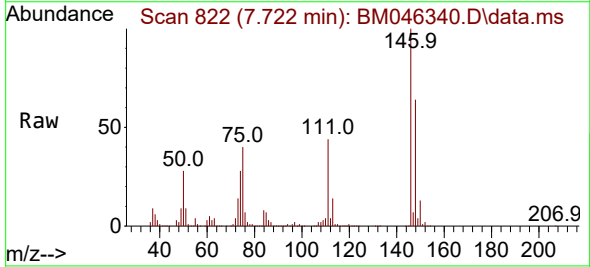
Instrument :
 BNA_M
 ClientSampleId :
 SSTDICC060



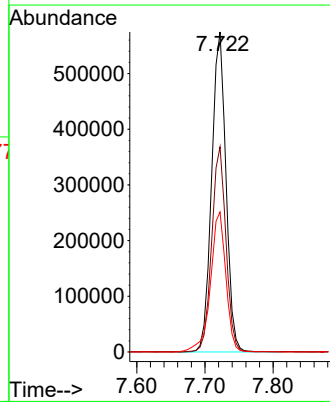
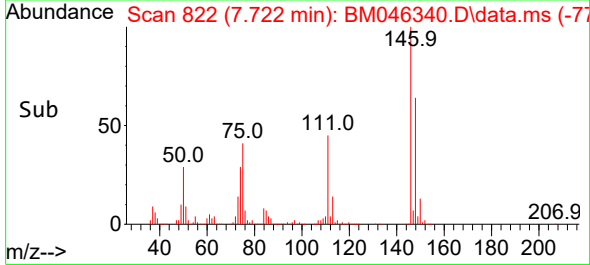
Tgt Ion:146 Resp: 860754
 Ion Ratio Lower Upper
 146 100
 148 62.9 51.4 77.0
 111 42.2 33.7 50.5

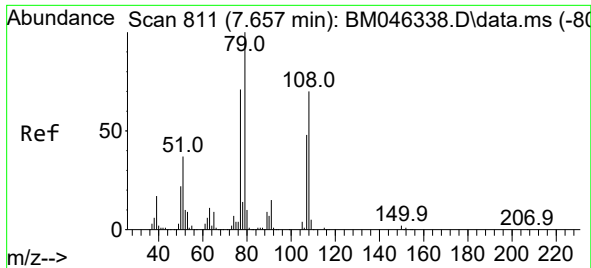


#14
 1,2-Dichlorobenzene
 Concen: 67.587 ng
 RT: 7.722 min Scan# 822
 Delta R.T. 0.000 min
 Lab File: BM046340.D
 Acq: 27 Jun 2024 20:13



Tgt Ion:146 Resp: 839911
 Ion Ratio Lower Upper
 146 100
 148 64.1 51.3 76.9
 111 43.8 35.4 53.2

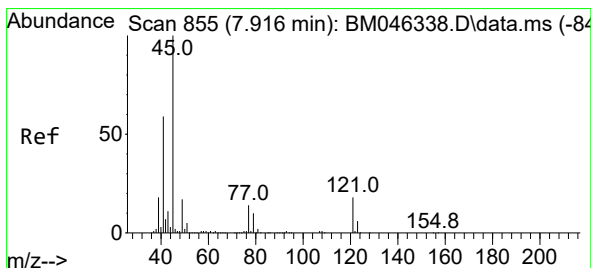
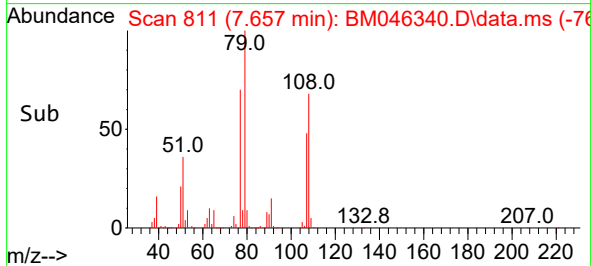
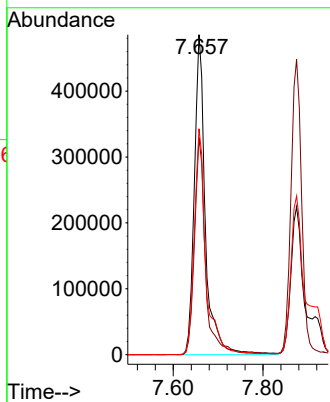
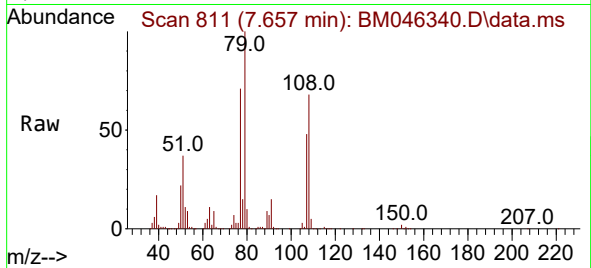




#15
Benzyl Alcohol
Concen: 78.497 ng
RT: 7.657 min Scan# 811
Delta R.T. 0.000 min
Lab File: BM046340.D
Acq: 27 Jun 2024 20:13

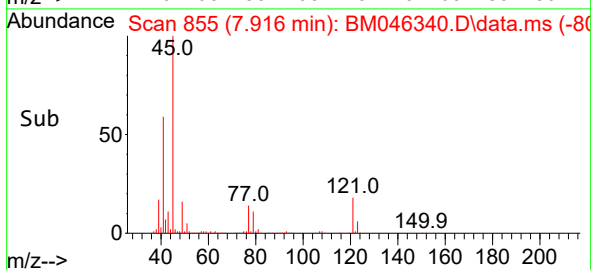
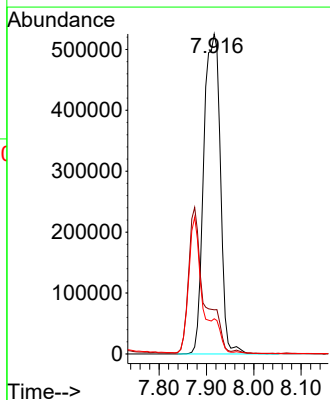
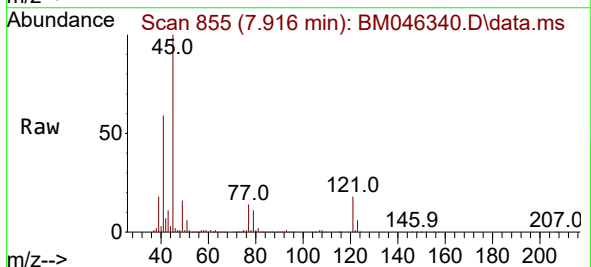
Instrument :
BNA_M
ClientSampleId :
SSTDICC060

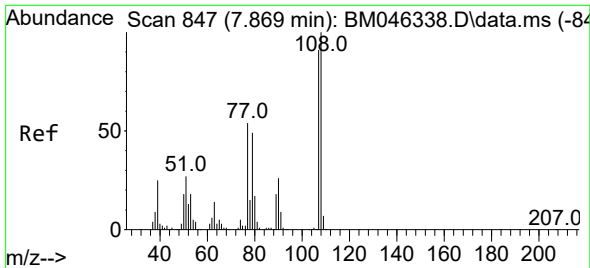
Tgt Ion: 79 Resp: 831595
Ion Ratio Lower Upper
79 100
108 67.8 56.1 84.1
77 70.6 56.9 85.3



#16
2,2'-oxybis(1-Chloropropane)
Concen: 68.991 ng
RT: 7.916 min Scan# 855
Delta R.T. 0.000 min
Lab File: BM046340.D
Acq: 27 Jun 2024 20:13

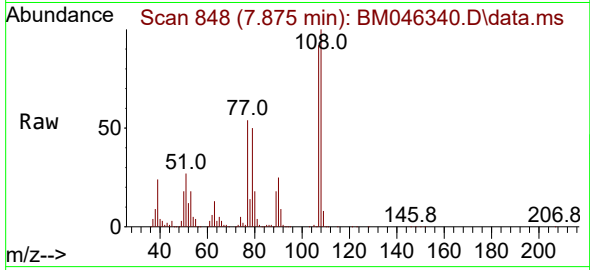
Tgt Ion: 45 Resp: 1272298
Ion Ratio Lower Upper
45 100
77 13.8 0.0 34.3
79 11.0 0.0 30.8





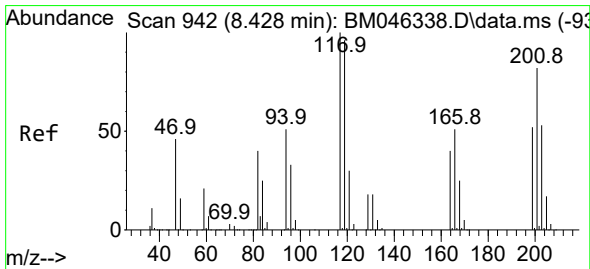
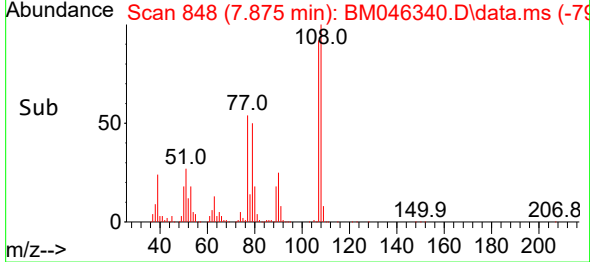
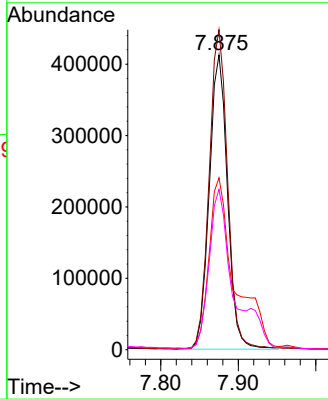
#17
 2-Methylphenol
 Concen: 70.803 ng
 RT: 7.875 min Scan# 84
 Delta R.T. 0.006 min
 Lab File: BM046340.D
 Acq: 27 Jun 2024 20:13

Instrument :
 BNA_M
 ClientSampleId :
 SSTDICC060



Tgt Ion:107 Resp: 672892

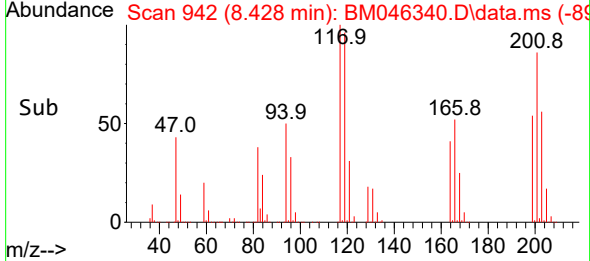
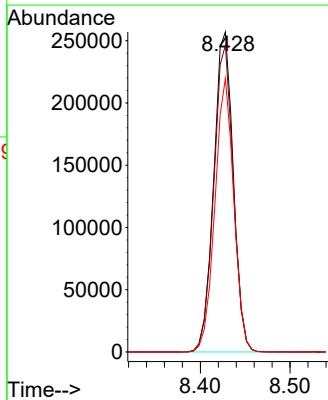
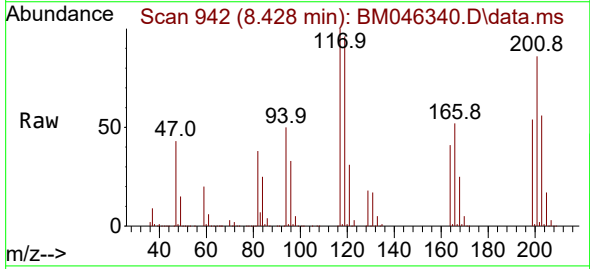
Ion	Ratio	Lower	Upper
107	100		
108	108.6	88.1	132.1
77	58.3	47.5	71.3
79	54.4	43.9	65.9

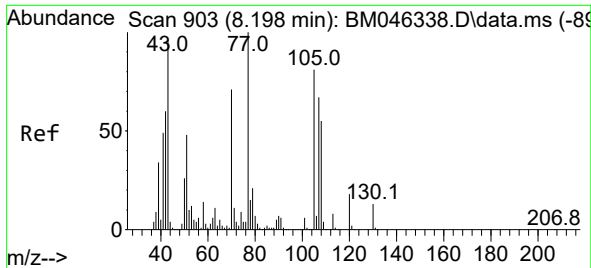


#18
 Hexachloroethane
 Concen: 75.319 ng
 RT: 8.428 min Scan# 942
 Delta R.T. 0.000 min
 Lab File: BM046340.D
 Acq: 27 Jun 2024 20:13

Tgt Ion:117 Resp: 388875

Ion	Ratio	Lower	Upper
117	100		
119	95.9	76.9	115.3
201	85.5	67.2	100.8

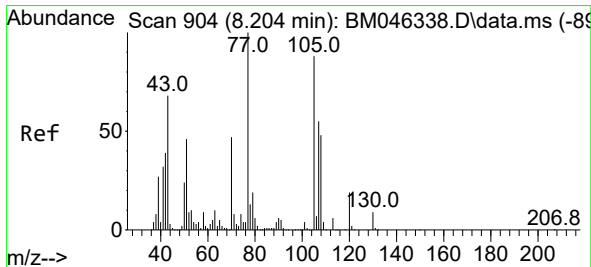
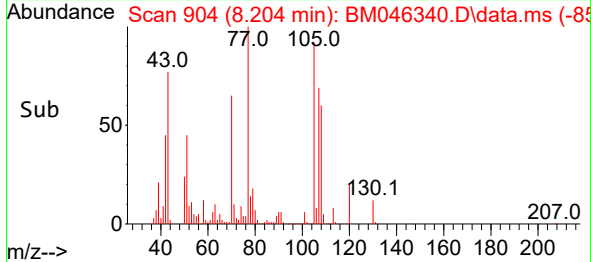
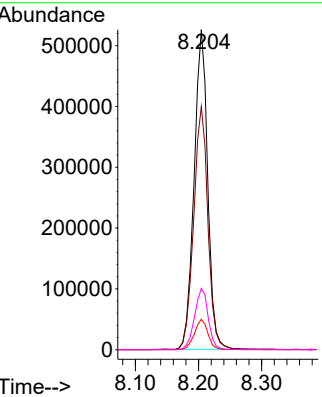
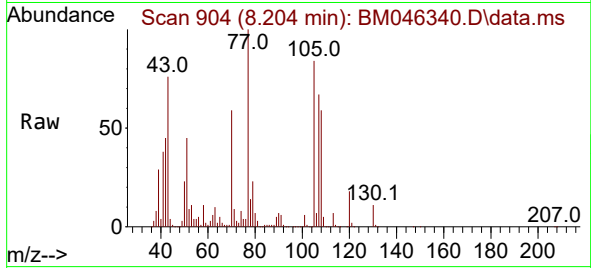




#19
 n-Nitroso-di-n-propylamine
 Concen: 82.682 ng
 RT: 8.204 min Scan# 904
 Delta R.T. 0.006 min
 Lab File: BM046340.D
 Acq: 27 Jun 2024 20:13

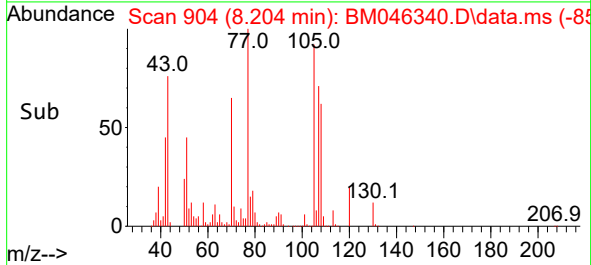
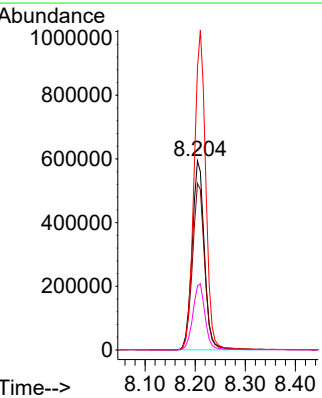
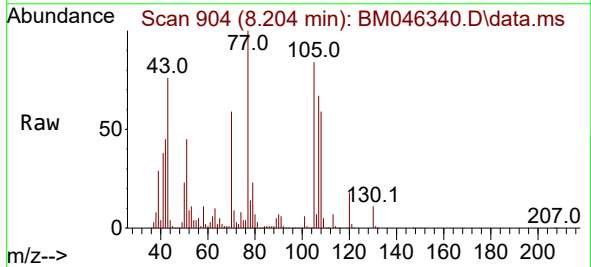
Instrument :
 BNA_M
 ClientSampleId :
 SSTDICC060

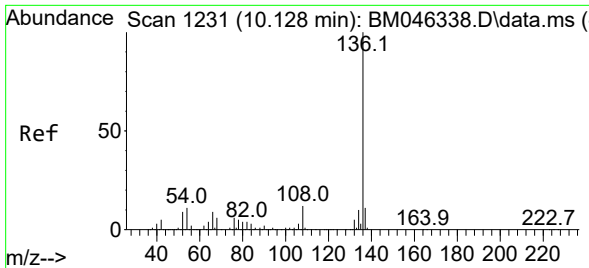
Tgt Ion: 70 Resp: 788577
 Ion Ratio Lower Upper
 70 100
 42 76.0 67.0 100.6
 101 9.5 7.3 10.9
 130 19.1 14.6 22.0



#20
 3+4-Methylphenols
 Concen: 80.035 ng
 RT: 8.204 min Scan# 904
 Delta R.T. 0.000 min
 Lab File: BM046340.D
 Acq: 27 Jun 2024 20:13

Tgt Ion: 107 Resp: 1012852
 Ion Ratio Lower Upper
 107 100
 108 88.1 67.7 107.7
 77 149.2 161.4 201.4#
 79 33.9 15.3 55.3



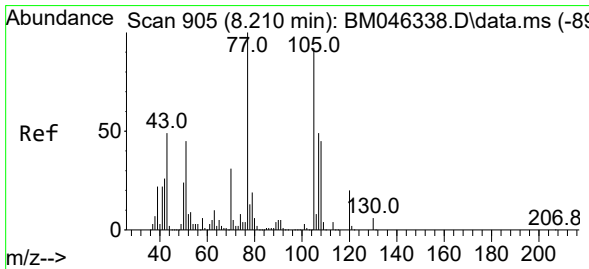
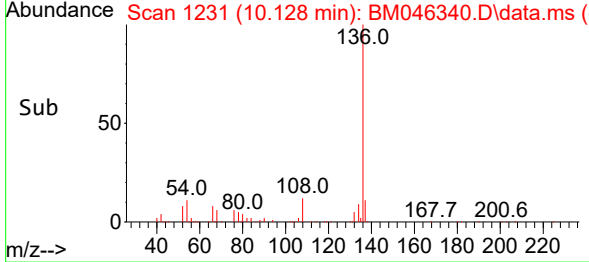
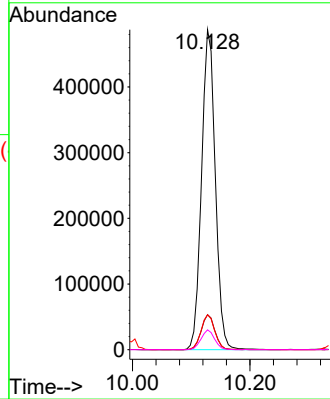
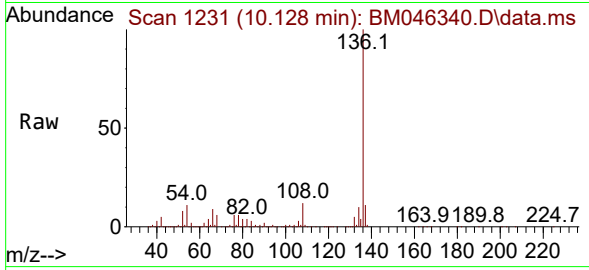


#21
 Naphthalene-d8
 Concen: 20.000 ng
 RT: 10.128 min Scan# 11
 Delta R.T. 0.000 min
 Lab File: BM046340.D
 Acq: 27 Jun 2024 20:13

Instrument :
 BNA_M
 ClientSampleId :
 SSTDICC060

Tgt Ion:136 Resp: 791470

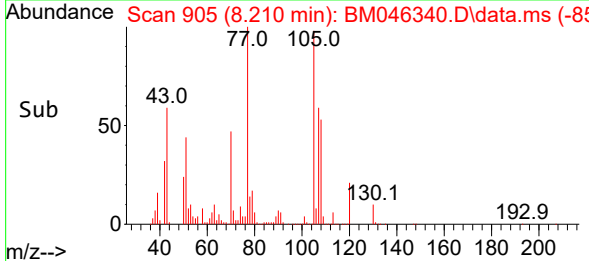
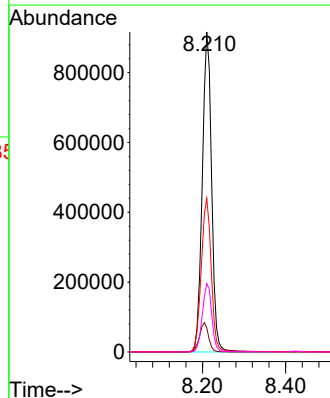
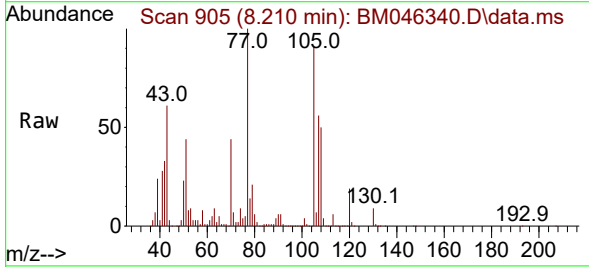
Ion	Ratio	Lower	Upper
136	100		
137	11.0	8.6	13.0
54	10.9	9.0	13.4
68	6.2	5.1	7.7

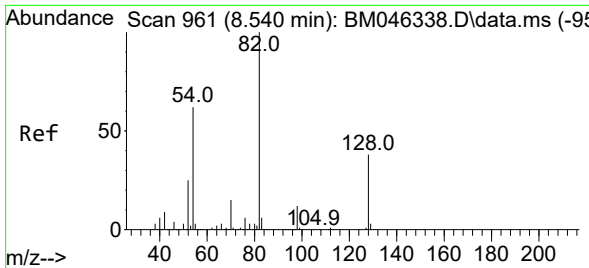


#22
 Acetophenone
 Concen: 78.354 ng
 RT: 8.210 min Scan# 905
 Delta R.T. 0.000 min
 Lab File: BM046340.D
 Acq: 27 Jun 2024 20:13

Tgt Ion:105 Resp: 1434247

Ion	Ratio	Lower	Upper
105	100		
71	7.6	4.2	6.2#
51	48.0	39.4	59.0
120	21.4	17.4	26.2





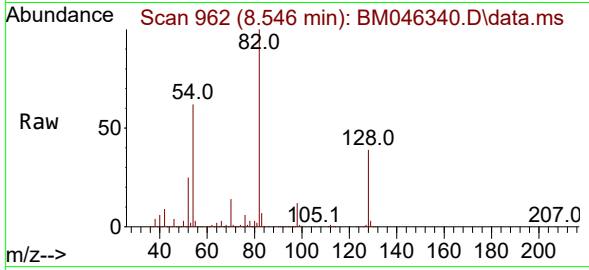
#23
 Nitrobenzene-d5
 Concen: 161.269 ng
 RT: 8.546 min Scan# 90
 Delta R.T. 0.006 min
 Lab File: BM046340.D
 Acq: 27 Jun 2024 20:13

Instrument :

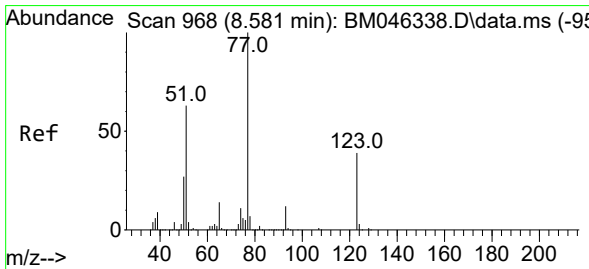
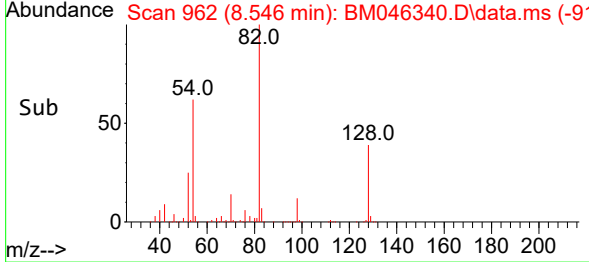
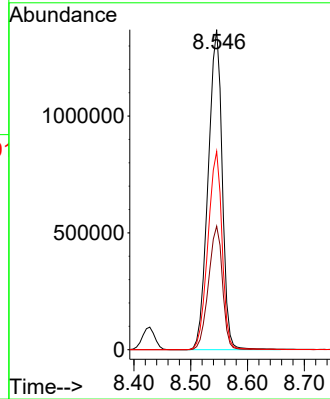
BNA_M

ClientSampleId :

SSTDICC060

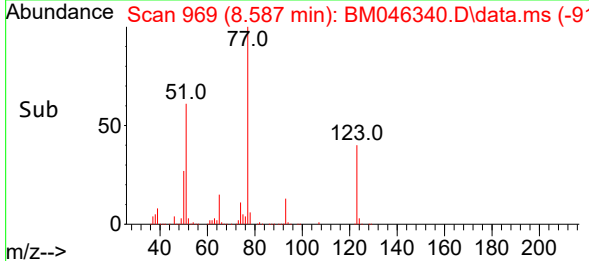
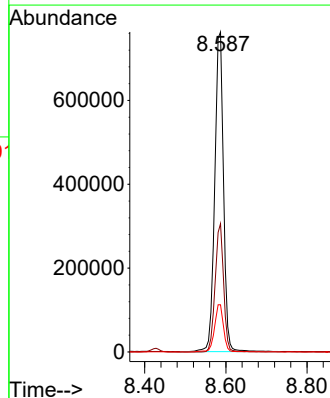
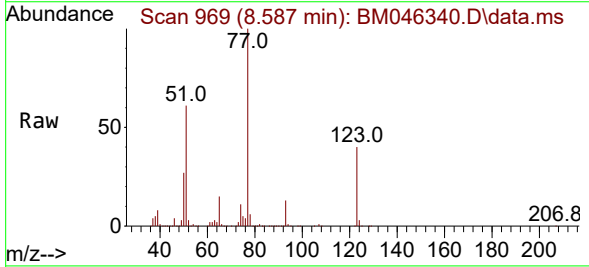


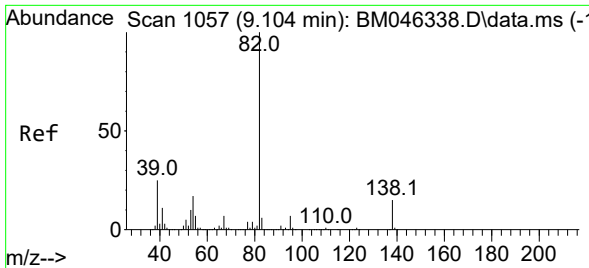
Tgt Ion: 82 Resp: 2346428
 Ion Ratio Lower Upper
 82 100
 128 38.6 30.6 46.0
 54 61.9 49.6 74.4



#24
 Nitrobenzene
 Concen: 76.865 ng
 RT: 8.587 min Scan# 969
 Delta R.T. 0.006 min
 Lab File: BM046340.D
 Acq: 27 Jun 2024 20:13

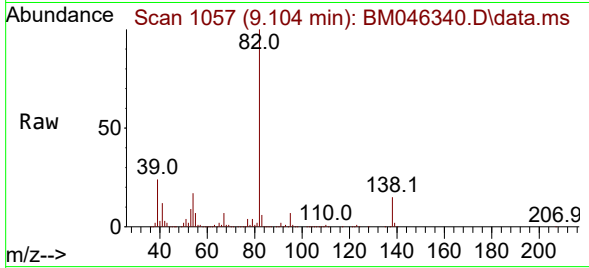
Tgt Ion: 77 Resp: 1137465
 Ion Ratio Lower Upper
 77 100
 123 40.1 31.4 47.0
 65 14.7 11.5 17.3



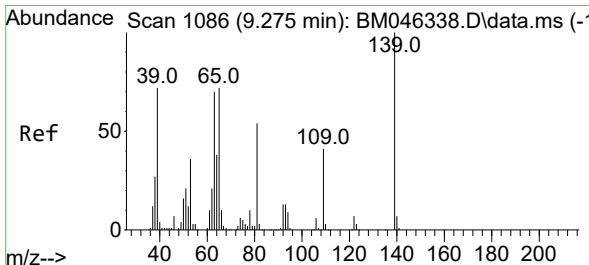
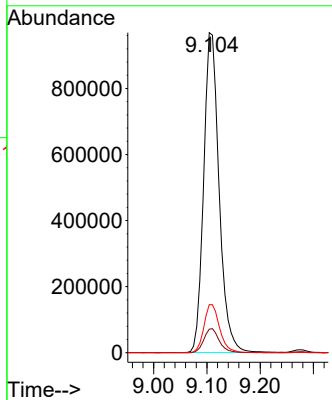
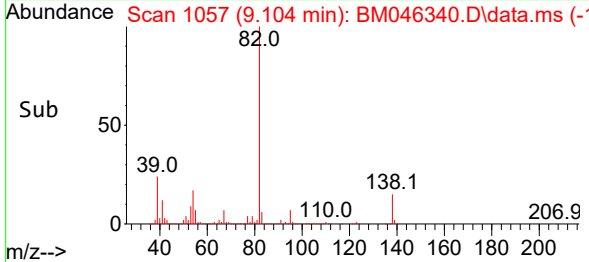


#25
 Isophorone
 Concen: 72.094 ng
 RT: 9.104 min Scan# 1057
 Delta R.T. 0.000 min
 Lab File: BM046340.D
 Acq: 27 Jun 2024 20:13

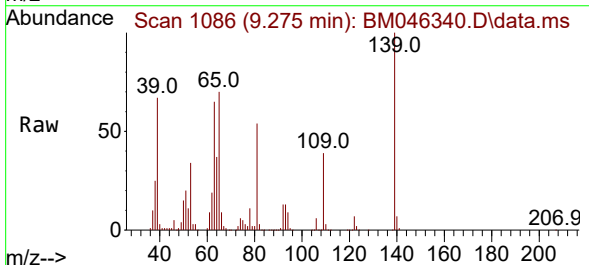
Instrument : BNA_M
 ClientSampleId : SSTDICC060



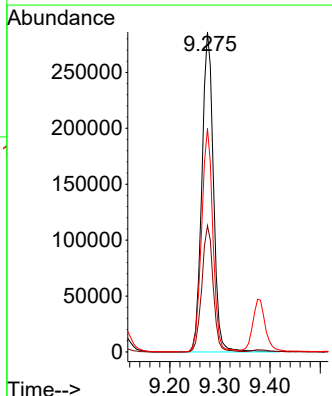
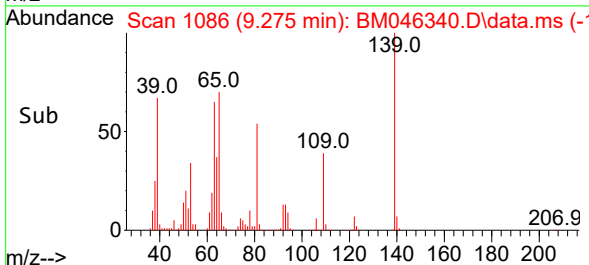
Tgt Ion: 82 Resp: 1952604
 Ion Ratio Lower Upper
 82 100
 95 7.4 5.7 8.5
 138 15.0 12.2 18.2

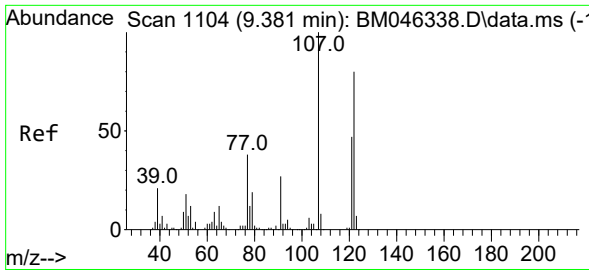


#26
 2-Nitrophenol
 Concen: 77.787 ng
 RT: 9.275 min Scan# 1086
 Delta R.T. 0.000 min
 Lab File: BM046340.D
 Acq: 27 Jun 2024 20:13



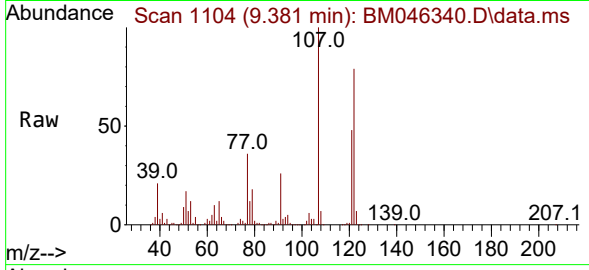
Tgt Ion: 139 Resp: 458418
 Ion Ratio Lower Upper
 139 100
 109 39.5 32.9 49.3
 65 69.9 57.4 86.2



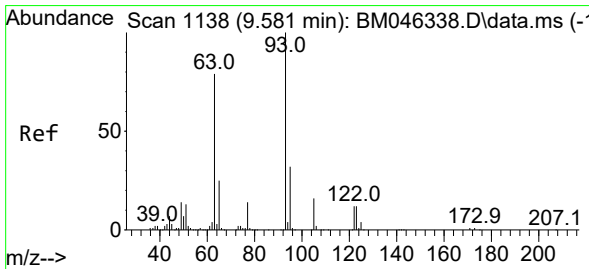
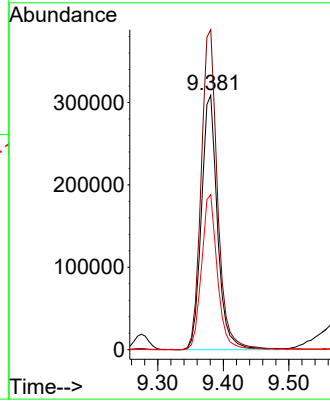
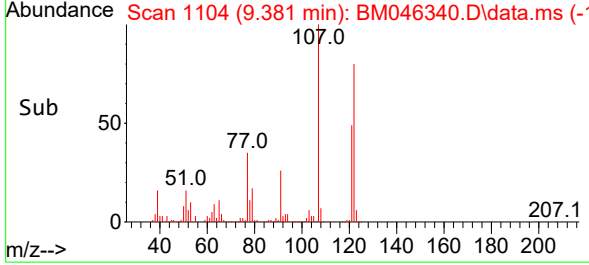


#27
 2,4-Dimethylphenol
 Concen: 63.990 ng
 RT: 9.381 min Scan# 1104
 Delta R.T. 0.000 min
 Lab File: BM046340.D
 Acq: 27 Jun 2024 20:13

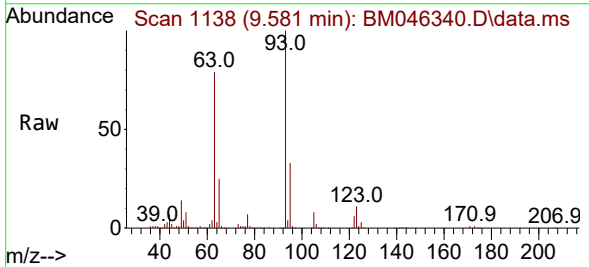
Instrument :
 BNA_M
 ClientSampleId :
 SSTDICC060



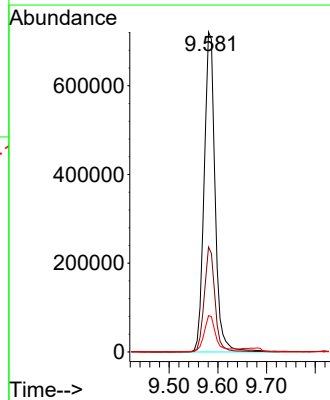
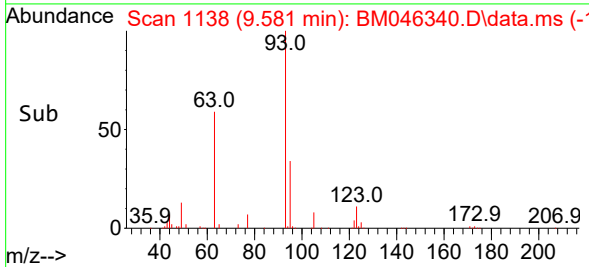
Tgt Ion:122 Resp: 528608
 Ion Ratio Lower Upper
 122 100
 107 125.8 99.5 149.3
 121 61.0 47.2 70.8

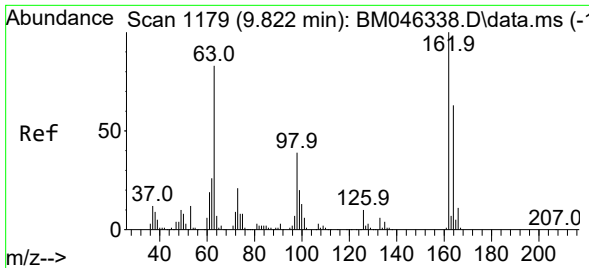


#28
 bis(2-Chloroethoxy)methane
 Concen: 67.456 ng
 RT: 9.581 min Scan# 1138
 Delta R.T. 0.000 min
 Lab File: BM046340.D
 Acq: 27 Jun 2024 20:13



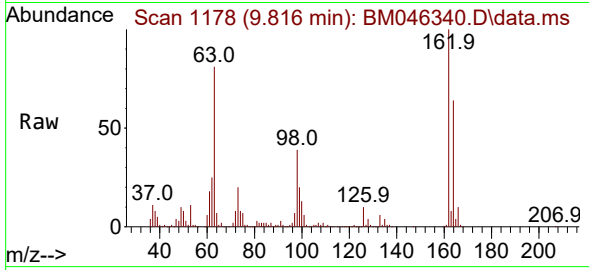
Tgt Ion: 93 Resp: 1124925
 Ion Ratio Lower Upper
 93 100
 95 32.8 25.6 38.4
 123 11.3 9.5 14.3



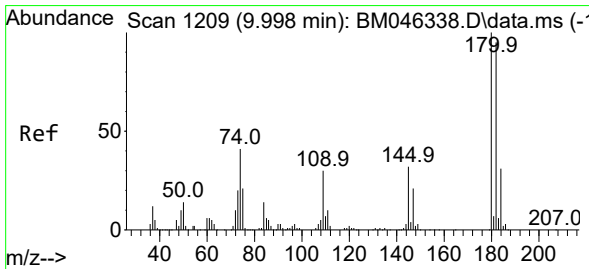
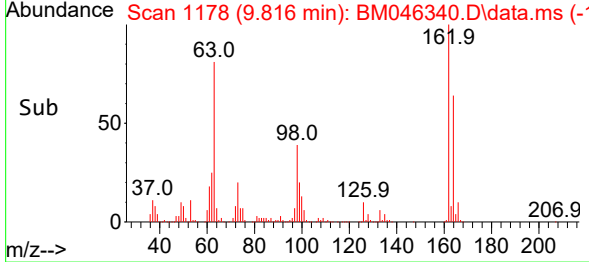
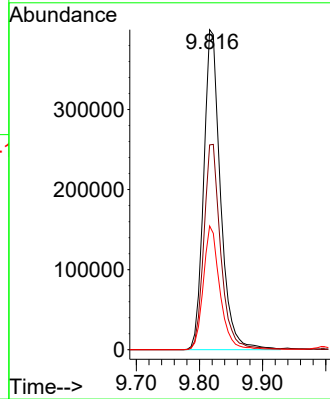


#29
 2,4-Dichlorophenol
 Concen: 65.567 ng
 RT: 9.816 min Scan# 1178
 Delta R.T. -0.006 min
 Lab File: BM046340.D
 Acq: 27 Jun 2024 20:13

Instrument :
 BNA_M
 ClientSampleId :
 SSTDICC060

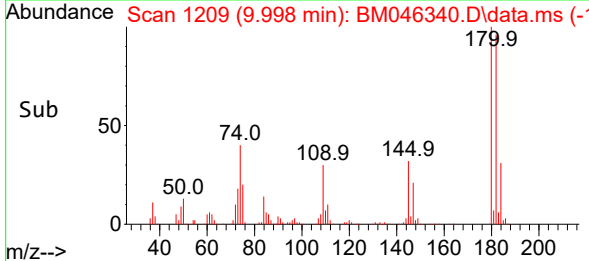
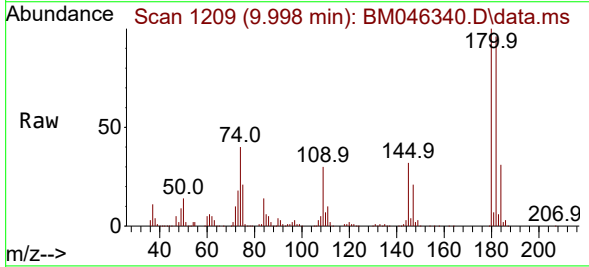
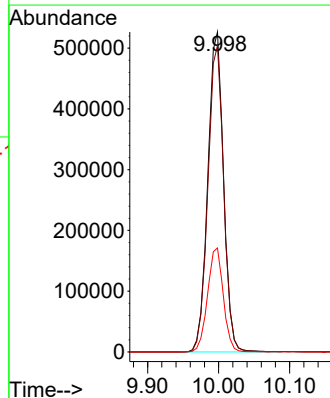


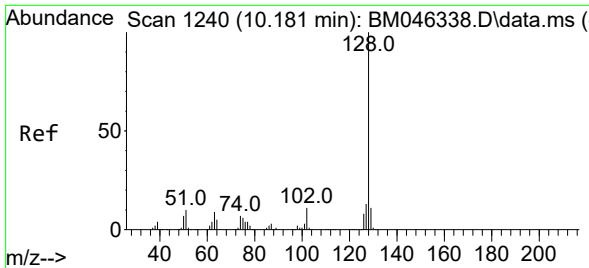
Tgt Ion:162 Resp: 740681
 Ion Ratio Lower Upper
 162 100
 164 64.0 42.7 82.7
 98 38.7 19.1 59.1



#30
 1,2,4-Trichlorobenzene
 Concen: 63.498 ng
 RT: 9.998 min Scan# 1209
 Delta R.T. 0.000 min
 Lab File: BM046340.D
 Acq: 27 Jun 2024 20:13

Tgt Ion:180 Resp: 812261
 Ion Ratio Lower Upper
 180 100
 182 95.8 75.6 113.4
 145 32.5 26.0 39.0



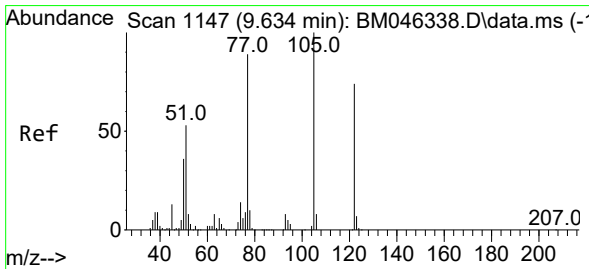
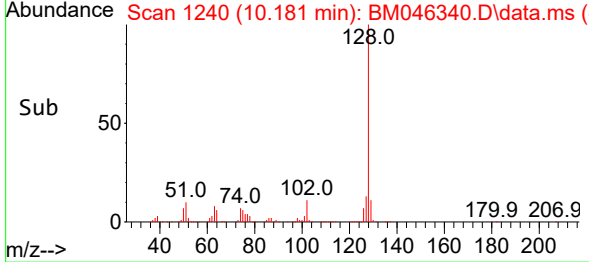
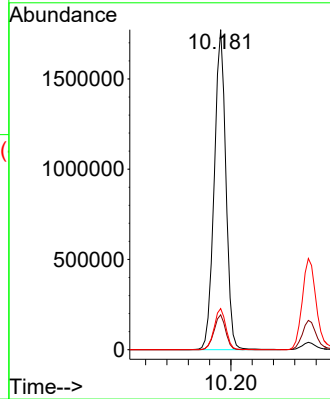
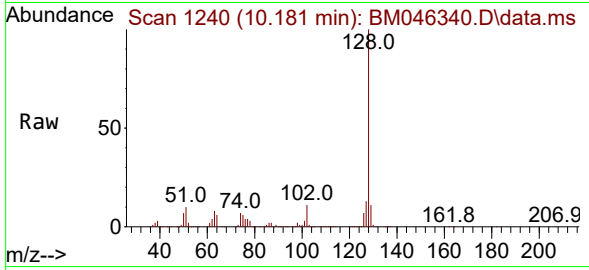


#31
 Naphthalene
 Concen: 68.519 ng
 RT: 10.181 min Scan# 1155
 Delta R.T. 0.000 min
 Lab File: BM046340.D
 Acq: 27 Jun 2024 20:13

Instrument :
 BNA_M
 ClientSampleId :
 SSTDICC060

Tgt Ion:128 Resp: 2686710

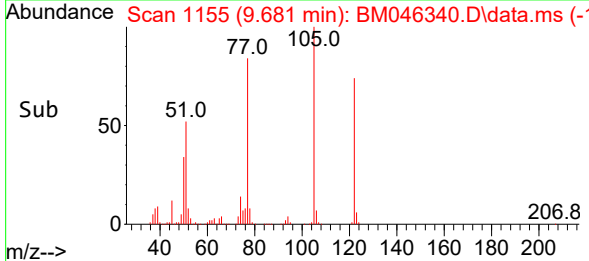
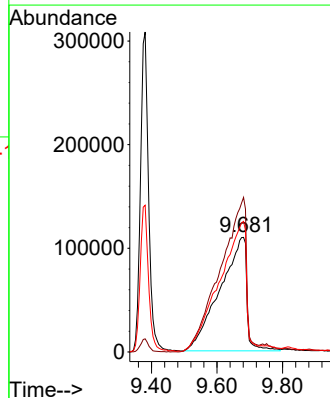
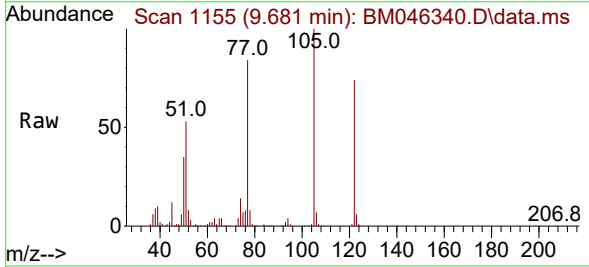
Ion	Ratio	Lower	Upper
128	100		
129	10.9	8.4	12.6
127	12.8	10.3	15.5

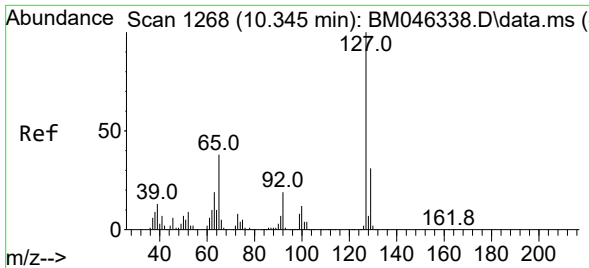


#32
 Benzoic acid
 Concen: 88.784 ng
 RT: 9.681 min Scan# 1155
 Delta R.T. 0.047 min
 Lab File: BM046340.D
 Acq: 27 Jun 2024 20:13

Tgt Ion:122 Resp: 623696

Ion	Ratio	Lower	Upper
122	100		
105	134.9	115.0	155.0
77	114.0	100.1	140.1





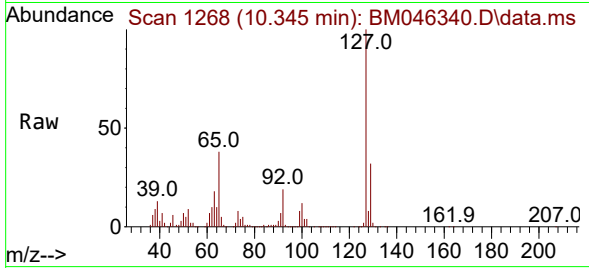
#33
 4-Chloroaniline
 Concen: 63.841 ng
 RT: 10.345 min Scan# 11
 Delta R.T. 0.000 min
 Lab File: BM046340.D
 Acq: 27 Jun 2024 20:13

Instrument :

BNA_M

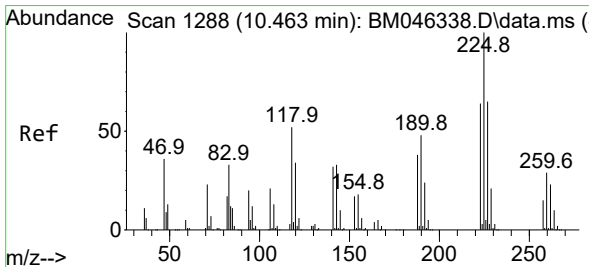
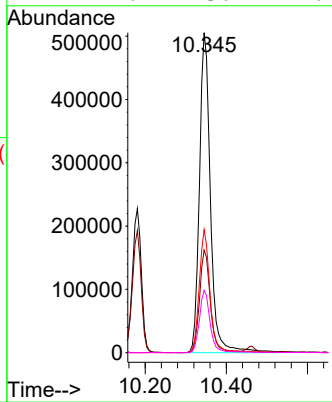
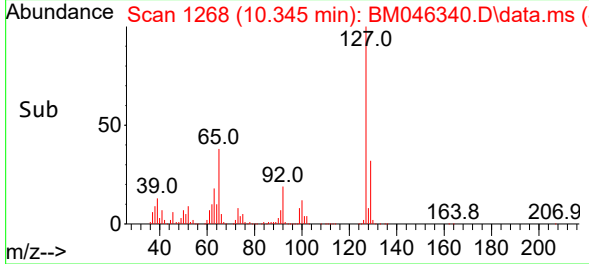
ClientSampleId :

SSTDICC060

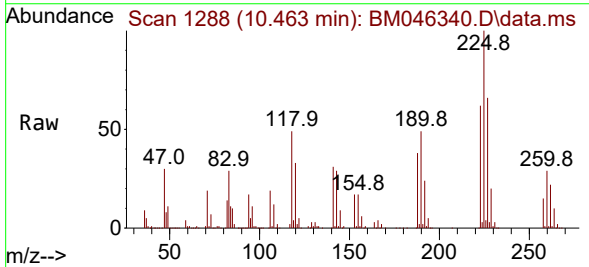


Tgt Ion:127 Resp: 955587

Ion	Ratio	Lower	Upper
127	100		
129	32.0	25.0	37.4
65	38.5	30.2	45.4
92	19.4	15.1	22.7

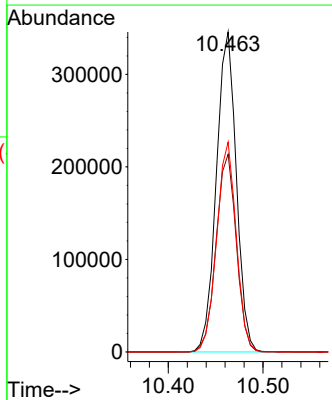
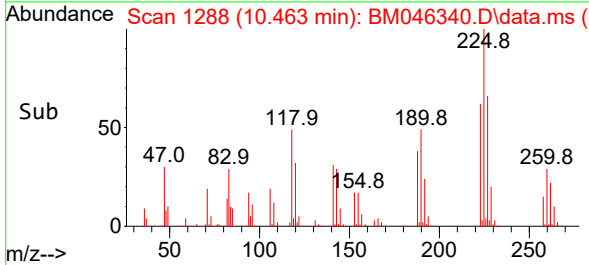


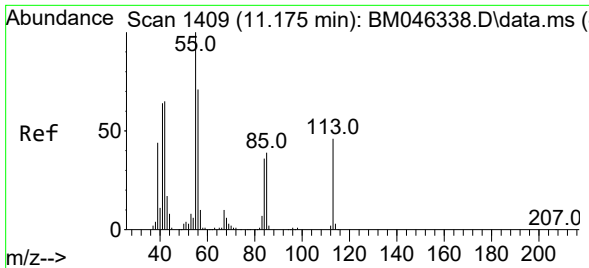
#34
 Hexachlorobutadiene
 Concen: 64.641 ng
 RT: 10.463 min Scan# 1288
 Delta R.T. 0.000 min
 Lab File: BM046340.D
 Acq: 27 Jun 2024 20:13



Tgt Ion:225 Resp: 506950

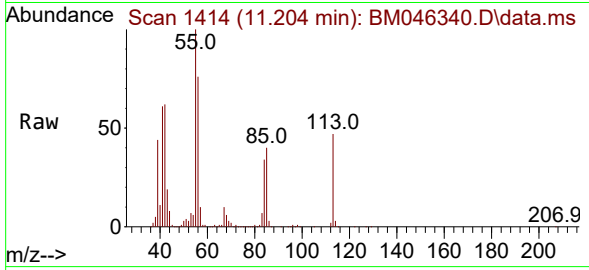
Ion	Ratio	Lower	Upper
225	100		
223	61.8	50.8	76.2
227	65.6	51.6	77.4



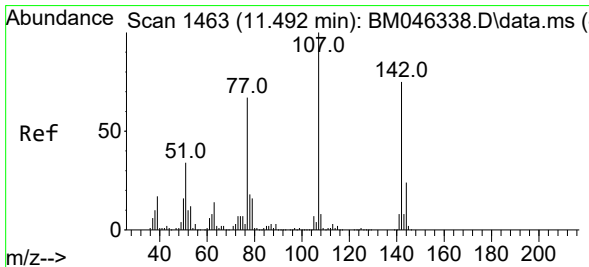
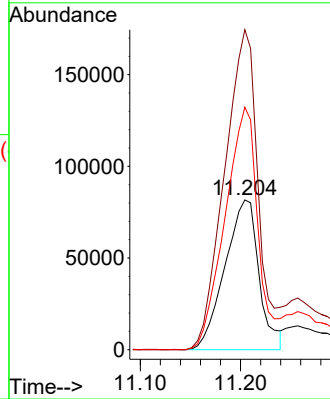
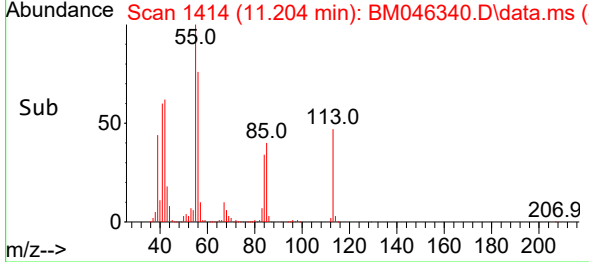


#35
 Caprolactam
 Concen: 52.847 ng
 RT: 11.204 min Scan# 1409
 Delta R.T. 0.030 min
 Lab File: BM046340.D
 Acq: 27 Jun 2024 20:13

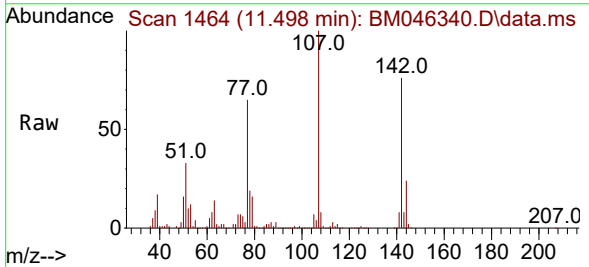
Instrument :
 BNA_M
 ClientSampleId :
 SSTDICC060



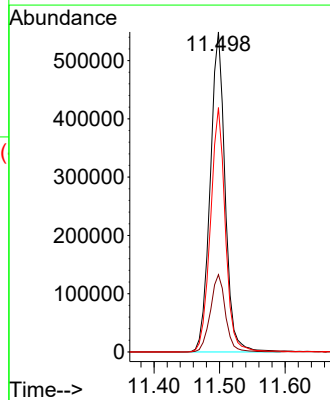
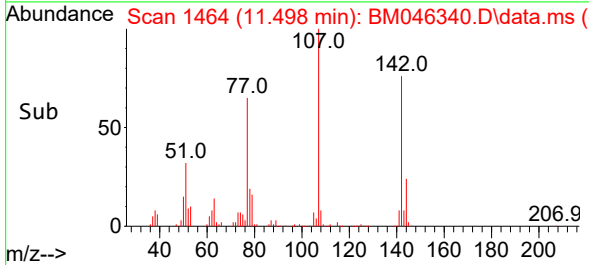
Tgt Ion:113 Resp: 193080
 Ion Ratio Lower Upper
 113 100
 55 213.7 199.3 239.3
 56 161.9 136.8 176.8

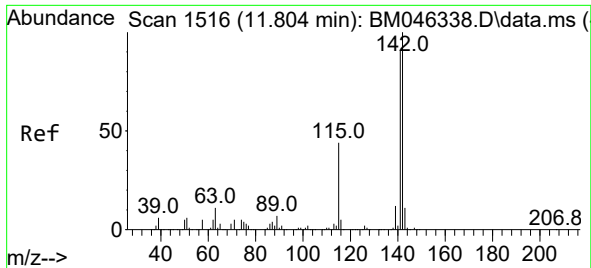


#36
 4-Chloro-3-methylphenol
 Concen: 67.775 ng
 RT: 11.498 min Scan# 1464
 Delta R.T. 0.006 min
 Lab File: BM046340.D
 Acq: 27 Jun 2024 20:13



Tgt Ion:107 Resp: 870598
 Ion Ratio Lower Upper
 107 100
 144 24.1 19.0 28.4
 142 76.3 60.1 90.1

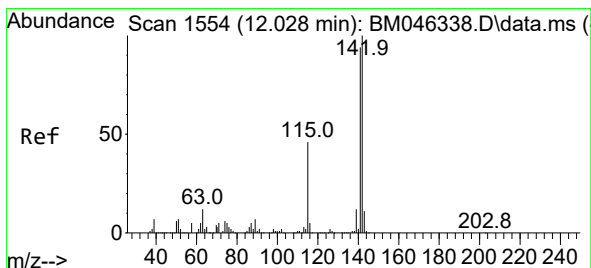
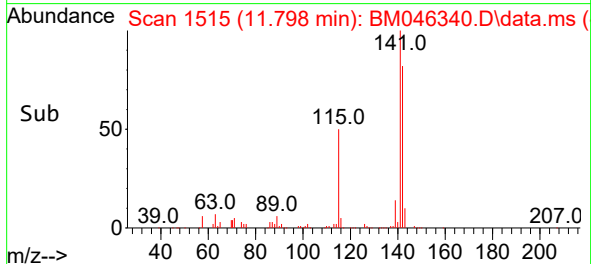
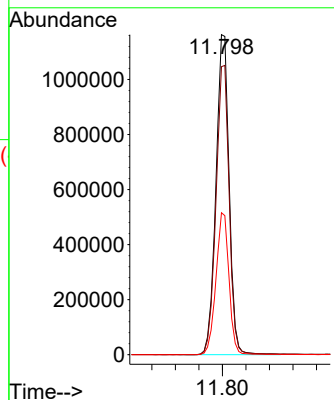
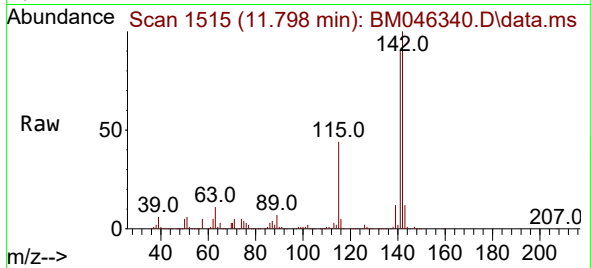




#37
 2-Methylnaphthalene
 Concen: 66.440 ng
 RT: 11.798 min Scan# 11
 Delta R.T. -0.006 min
 Lab File: BM046340.D
 Acq: 27 Jun 2024 20:13

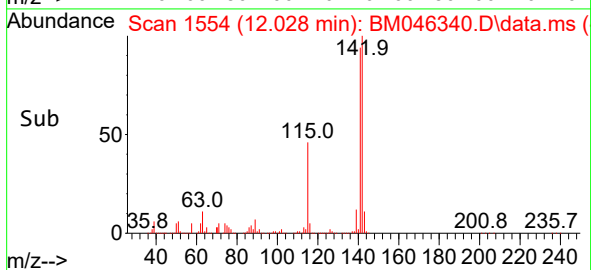
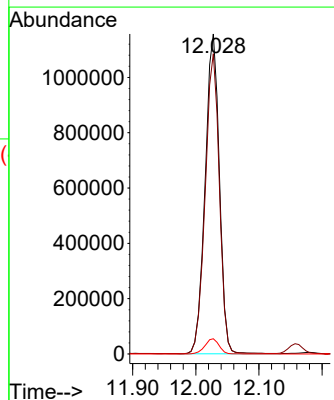
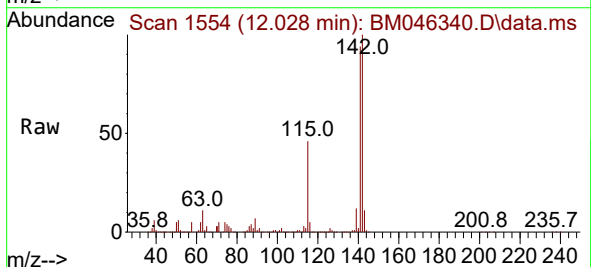
Instrument :
 BNA_M
 ClientSampleId :
 SSTDICC060

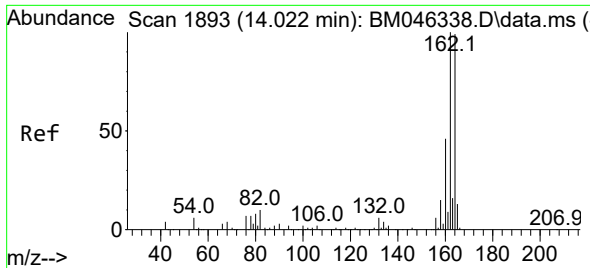
Tgt Ion:142 Resp: 1814737
 Ion Ratio Lower Upper
 142 100
 141 90.0 72.8 109.2
 115 44.4 34.8 52.2



#38
 1-Methylnaphthalene
 Concen: 66.887 ng
 RT: 12.028 min Scan# 1554
 Delta R.T. 0.000 min
 Lab File: BM046340.D
 Acq: 27 Jun 2024 20:13

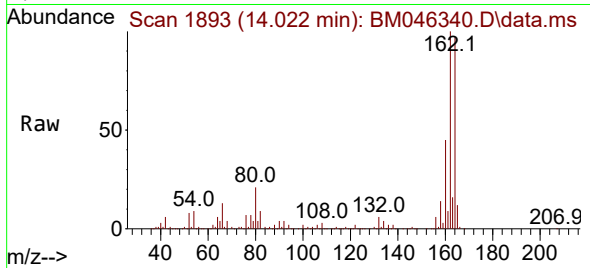
Tgt Ion:142 Resp: 1802544
 Ion Ratio Lower Upper
 142 100
 141 93.8 75.3 112.9
 116 4.7 3.8 5.6



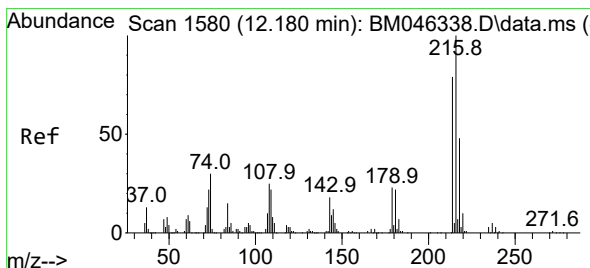
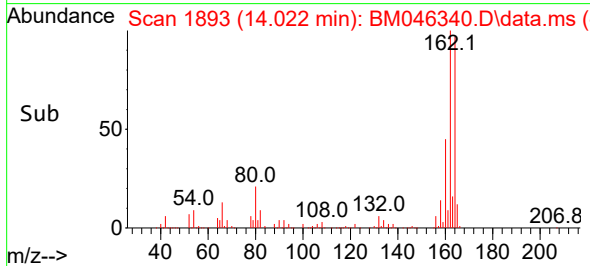
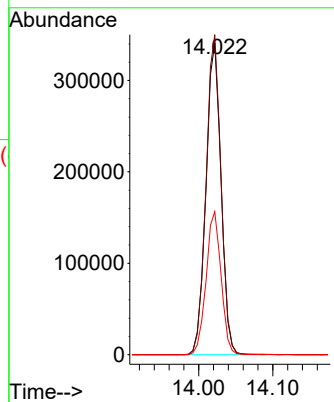


#39
 Acenaphthene-d10
 Concen: 20.000 ng
 RT: 14.022 min Scan# 11
 Delta R.T. 0.000 min
 Lab File: BM046340.D
 Acq: 27 Jun 2024 20:13

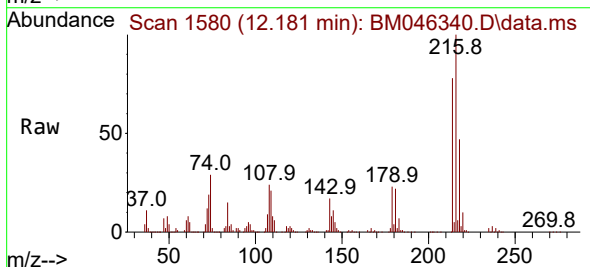
Instrument :
 BNA_M
 ClientSampleId :
 SSTDICC060



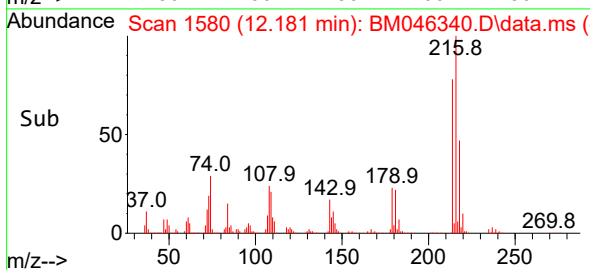
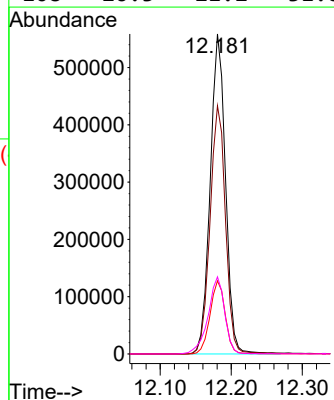
Tgt Ion:164 Resp: 480638
 Ion Ratio Lower Upper
 164 100
 162 102.7 80.5 120.7
 160 45.9 37.0 55.6

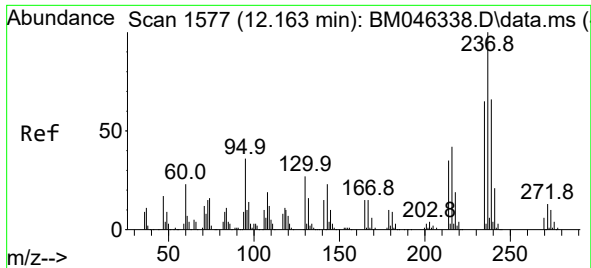


#40
 1,2,4,5-Tetrachlorobenzene
 Concen: 67.566 ng
 RT: 12.181 min Scan# 1580
 Delta R.T. 0.000 min
 Lab File: BM046340.D
 Acq: 27 Jun 2024 20:13



Tgt Ion:216 Resp: 837499
 Ion Ratio Lower Upper
 216 100
 214 79.0 63.4 95.2
 179 22.7 17.9 26.9
 108 26.3 21.2 31.8





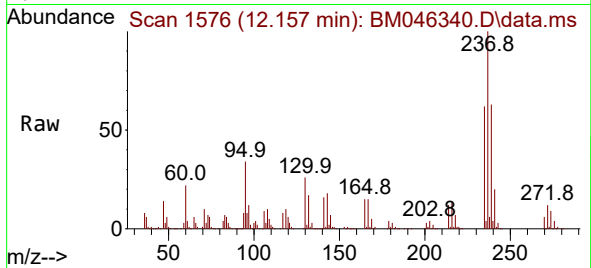
#41
 Hexachlorocyclopentadiene
 Concen: 69.622 ng
 RT: 12.157 min Scan# 11
 Delta R.T. -0.006 min
 Lab File: BM046340.D
 Acq: 27 Jun 2024 20:13

Instrument :

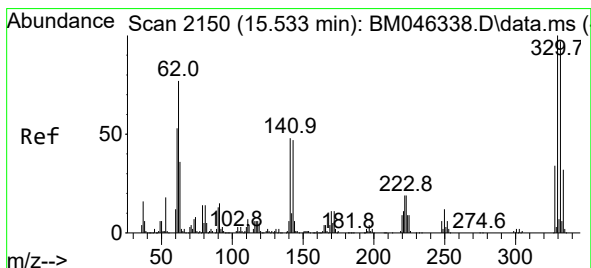
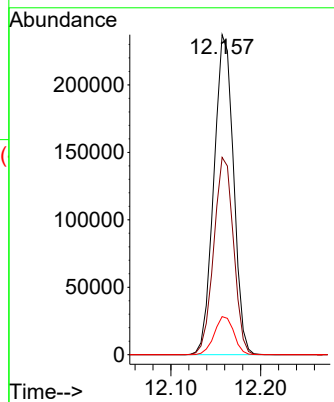
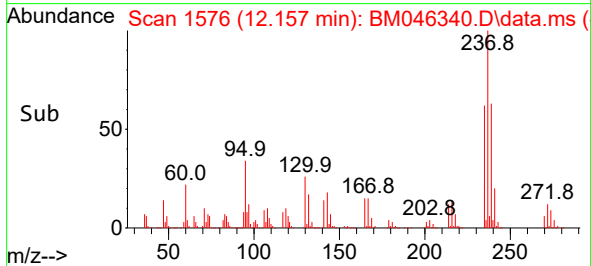
BNA_M

ClientSampleId :

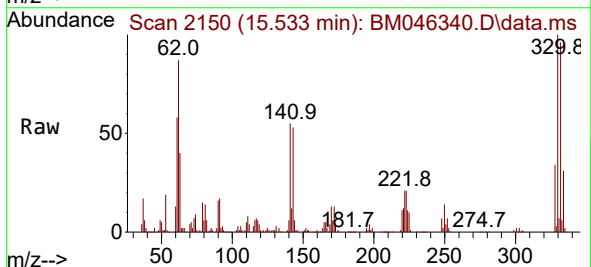
SSTDICC060



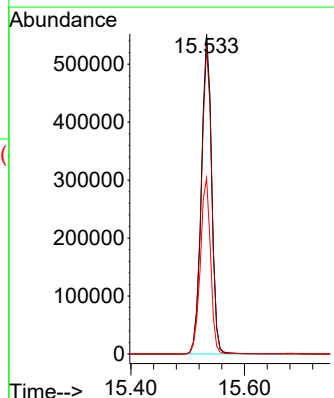
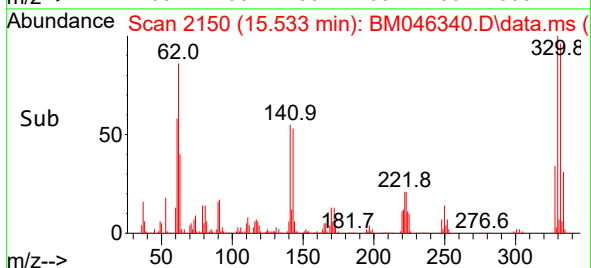
Tgt Ion:237 Resp: 361189
 Ion Ratio Lower Upper
 237 100
 235 61.7 44.5 84.5
 272 11.9 0.0 33.4

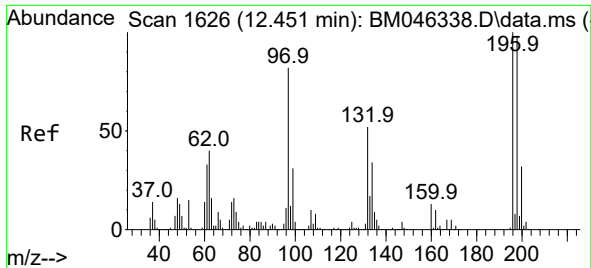


#42
 2,4,6-Tribromophenol
 Concen: 136.892 ng
 RT: 15.533 min Scan# 2150
 Delta R.T. 0.000 min
 Lab File: BM046340.D
 Acq: 27 Jun 2024 20:13



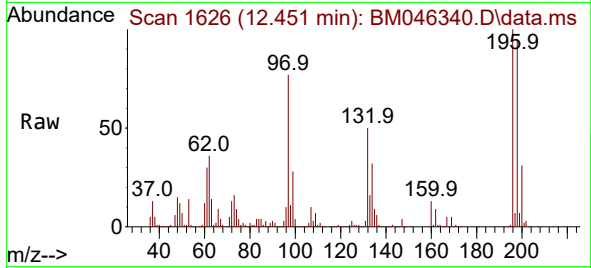
Tgt Ion:330 Resp: 696893
 Ion Ratio Lower Upper
 330 100
 332 96.5 77.8 116.6
 141 54.5 43.2 64.8



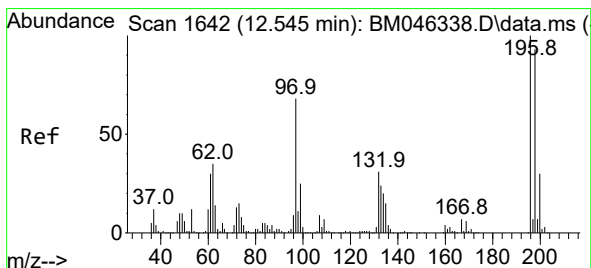
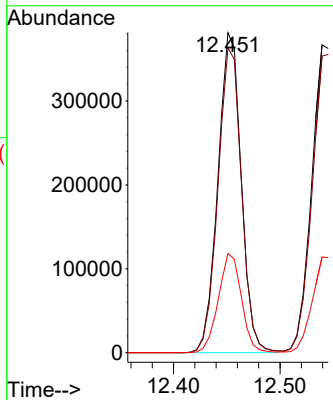
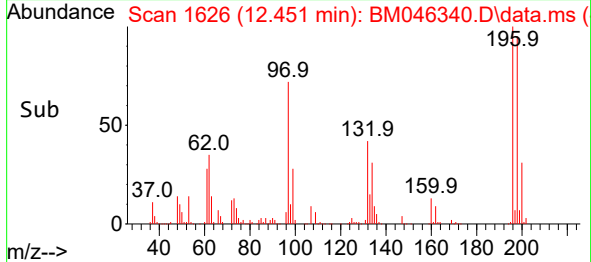


#43
 2,4,6-Trichlorophenol
 Concen: 69.175 ng
 RT: 12.451 min Scan# 1626
 Delta R.T. 0.000 min
 Lab File: BM046340.D
 Acq: 27 Jun 2024 20:13

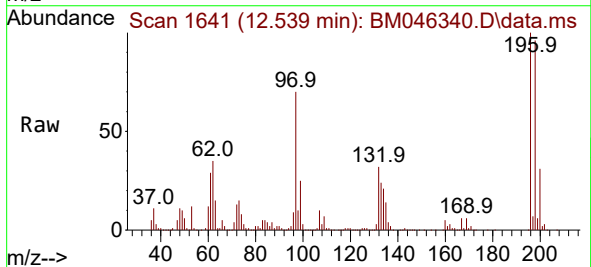
Instrument : BNA_M
 ClientSampleId : SSTDICC060



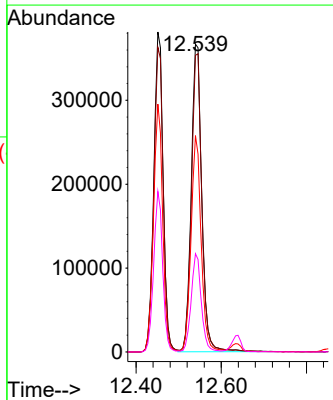
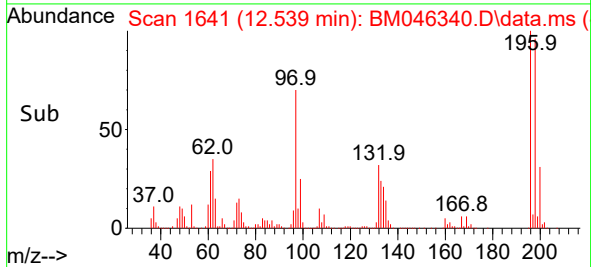
Tgt Ion:196 Resp: 578670
 Ion Ratio Lower Upper
 196 100
 198 95.2 78.7 118.1
 200 31.0 25.5 38.3

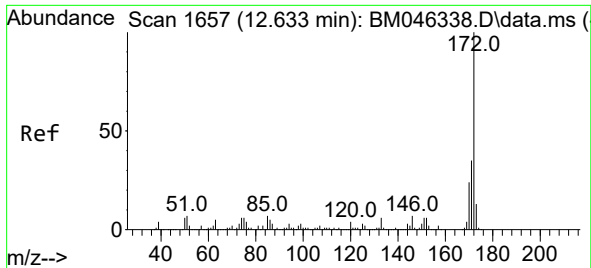


#44
 2,4,5-Trichlorophenol
 Concen: 67.790 ng
 RT: 12.539 min Scan# 1641
 Delta R.T. -0.006 min
 Lab File: BM046340.D
 Acq: 27 Jun 2024 20:13



Tgt Ion:196 Resp: 631149
 Ion Ratio Lower Upper
 196 100
 198 96.4 74.7 112.1
 97 70.3 54.6 82.0
 132 31.9 25.4 38.0

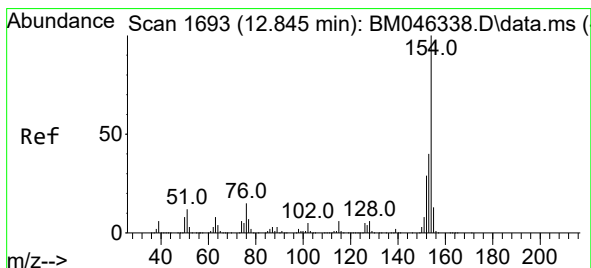
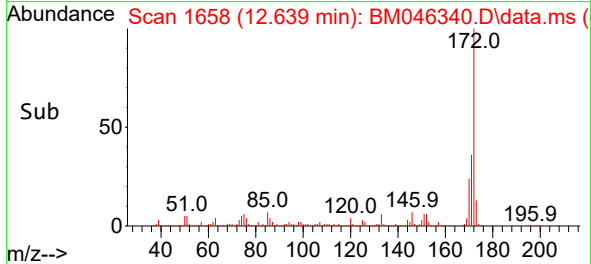
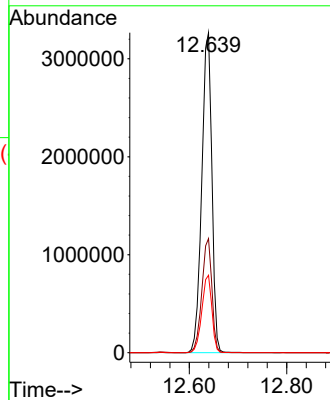
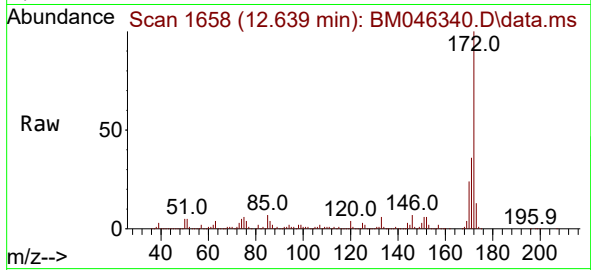




#45
 2-Fluorobiphenyl
 Concen: 157.737 ng
 RT: 12.639 min Scan# 1658
 Delta R.T. 0.006 min
 Lab File: BM046340.D
 Acq: 27 Jun 2024 20:13

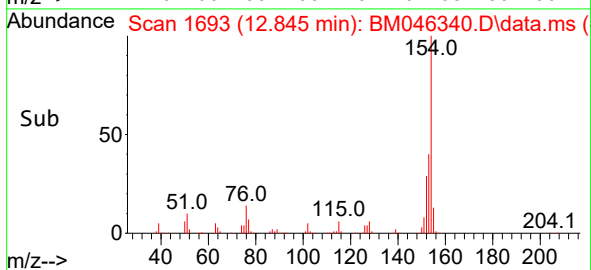
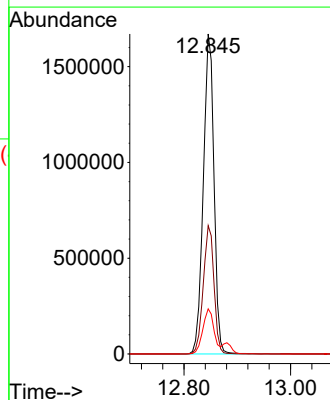
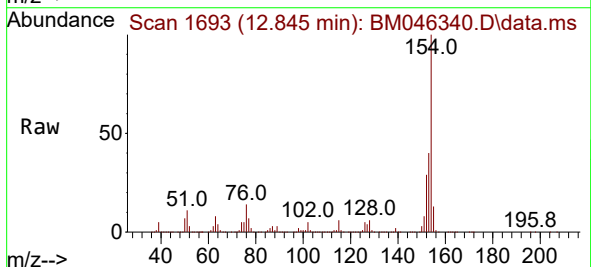
Instrument :
 BNA_M
 ClientSampleId :
 SSTDICC060

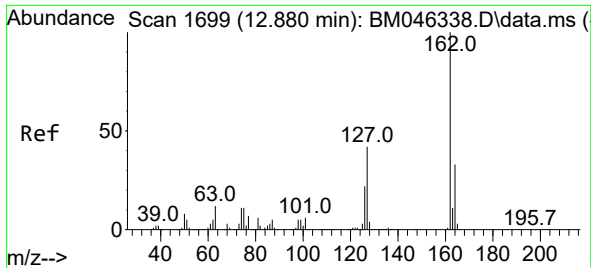
Tgt Ion:172 Resp: 4717088
 Ion Ratio Lower Upper
 172 100
 171 35.7 28.1 42.1
 170 24.2 19.4 29.0



#46
 1,1'-Biphenyl
 Concen: 71.686 ng
 RT: 12.845 min Scan# 1693
 Delta R.T. 0.000 min
 Lab File: BM046340.D
 Acq: 27 Jun 2024 20:13

Tgt Ion:154 Resp: 2322493
 Ion Ratio Lower Upper
 154 100
 153 40.1 19.8 59.8
 76 14.1 0.0 34.8





#47
 2-Chloronaphthalene
 Concen: 70.684 ng
 RT: 12.881 min Scan# 1699
 Delta R.T. 0.000 min
 Lab File: BM046340.D
 Acq: 27 Jun 2024 20:13

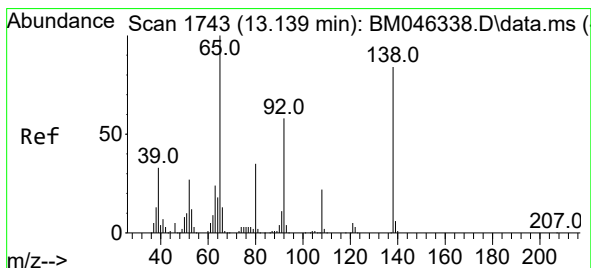
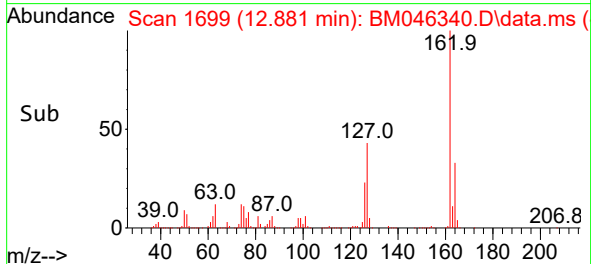
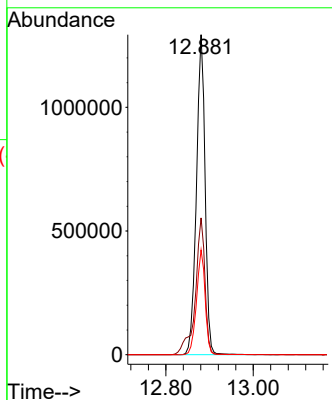
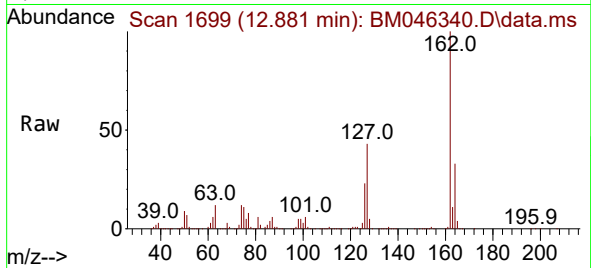
Instrument :

BNA_M

ClientSampleId :

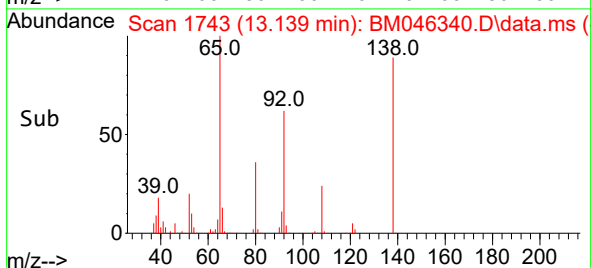
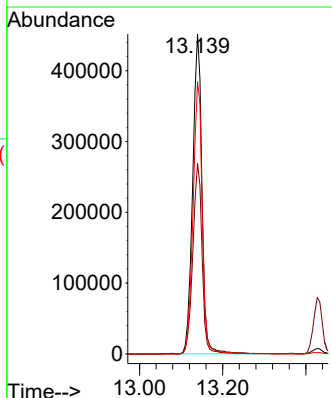
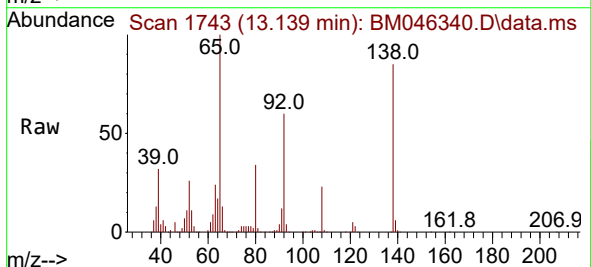
SSTDICC060

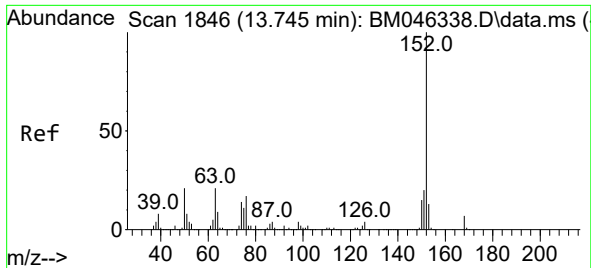
Tgt Ion:162 Resp: 1792198
 Ion Ratio Lower Upper
 162 100
 127 42.8 34.1 51.1
 164 32.8 26.1 39.1



#48
 2-Nitroaniline
 Concen: 87.186 ng
 RT: 13.139 min Scan# 1743
 Delta R.T. 0.000 min
 Lab File: BM046340.D
 Acq: 27 Jun 2024 20:13

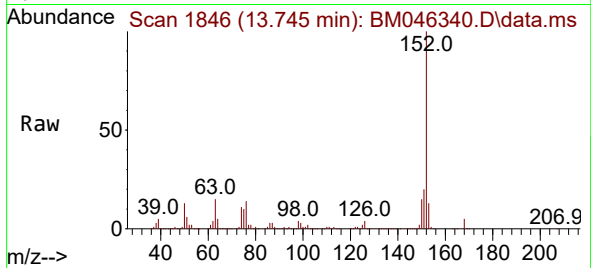
Tgt Ion: 65 Resp: 697535
 Ion Ratio Lower Upper
 65 100
 92 59.5 46.7 70.1
 138 85.1 67.3 100.9



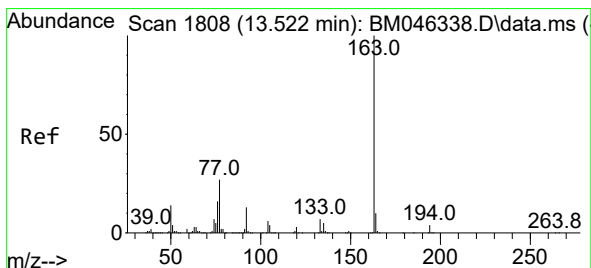
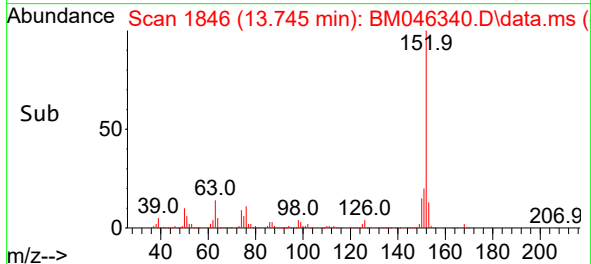
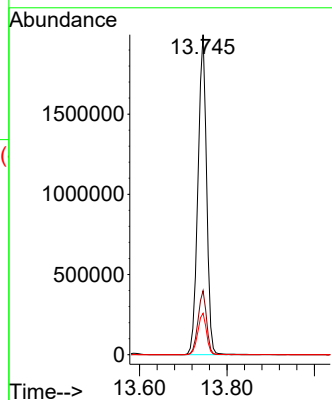


#49
 Acenaphthylene
 Concen: 71.343 ng
 RT: 13.745 min Scan# 1846
 Delta R.T. 0.000 min
 Lab File: BM046340.D
 Acq: 27 Jun 2024 20:13

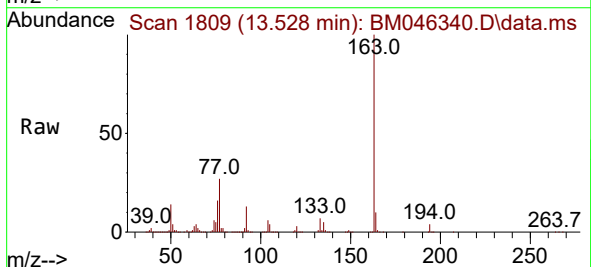
Instrument :
 BNA_M
 ClientSampleId :
 SSTDICC060



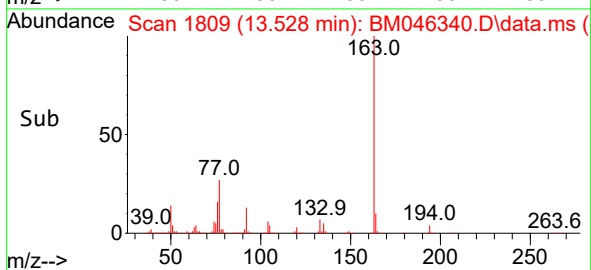
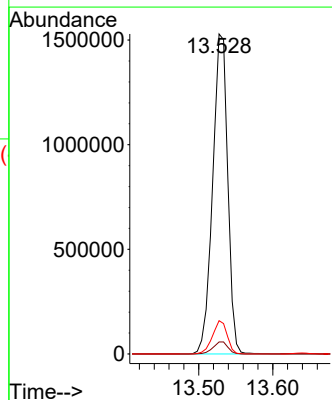
Tgt Ion:152 Resp: 2742906
 Ion Ratio Lower Upper
 152 100
 151 20.0 15.7 23.5
 153 12.9 10.4 15.6

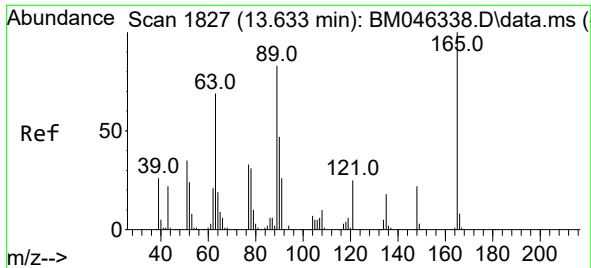


#50
 Dimethylphthalate
 Concen: 66.407 ng
 RT: 13.528 min Scan# 1809
 Delta R.T. 0.006 min
 Lab File: BM046340.D
 Acq: 27 Jun 2024 20:13



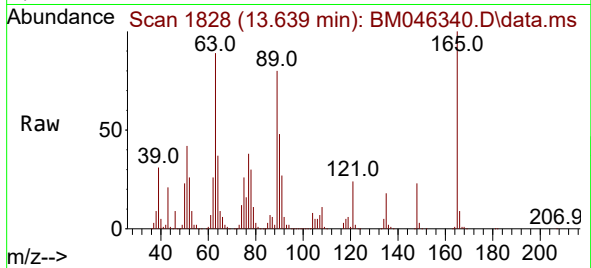
Tgt Ion:163 Resp: 2158994
 Ion Ratio Lower Upper
 163 100
 194 3.7 3.0 4.4
 164 10.4 7.8 11.8



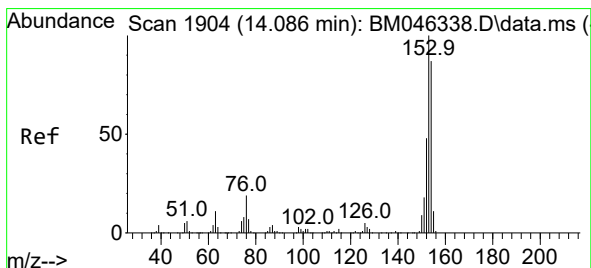
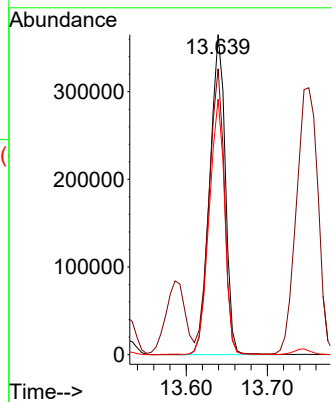
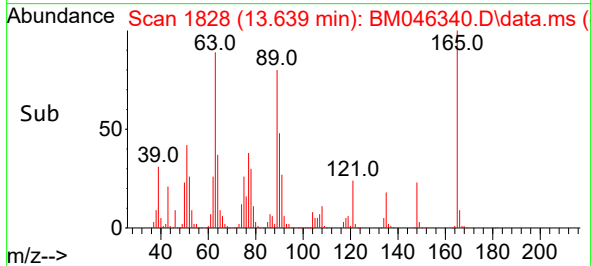


#51
 2,6-Dinitrotoluene
 Concen: 69.337 ng
 RT: 13.639 min Scan# 11
 Delta R.T. 0.006 min
 Lab File: BM046340.D
 Acq: 27 Jun 2024 20:13

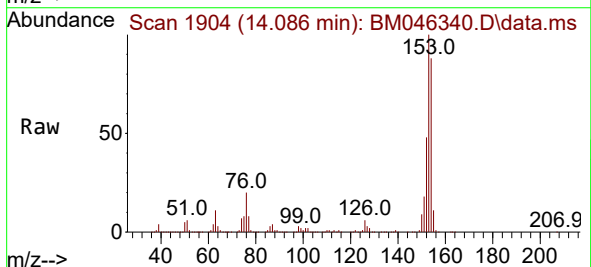
Instrument :
 BNA_M
 ClientSampleId :
 SSTDICC060



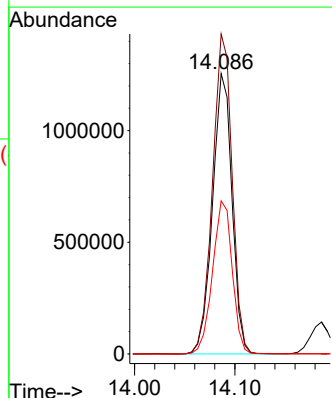
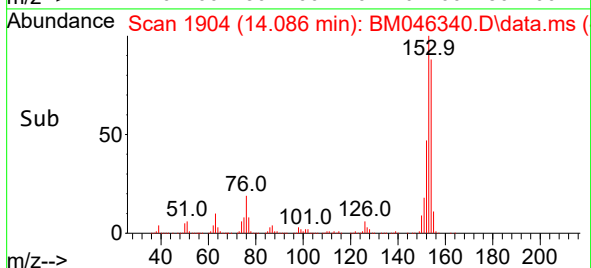
Tgt Ion:165 Resp: 483824
 Ion Ratio Lower Upper
 165 100
 63 89.4 74.4 111.6
 89 79.9 66.2 99.2

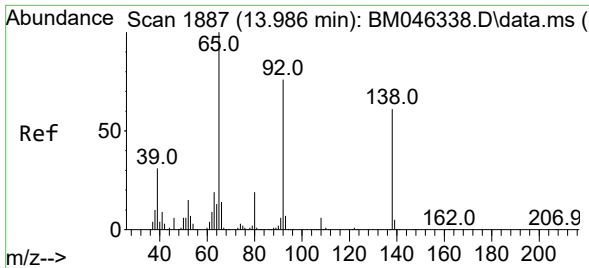


#52
 Acenaphthene
 Concen: 70.220 ng
 RT: 14.086 min Scan# 1904
 Delta R.T. 0.000 min
 Lab File: BM046340.D
 Acq: 27 Jun 2024 20:13



Tgt Ion:154 Resp: 1692334
 Ion Ratio Lower Upper
 154 100
 153 114.2 92.0 138.0
 152 54.6 44.4 66.6



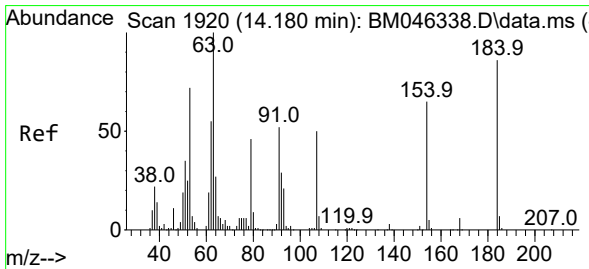
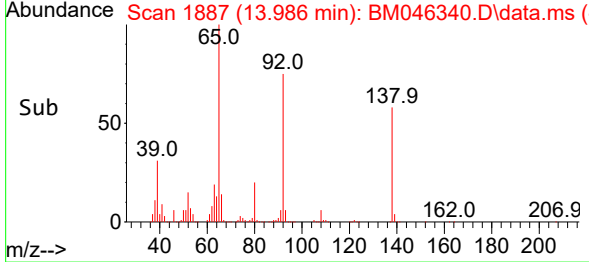
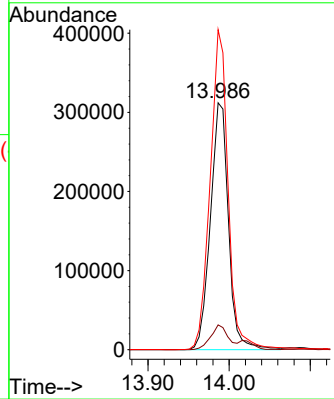
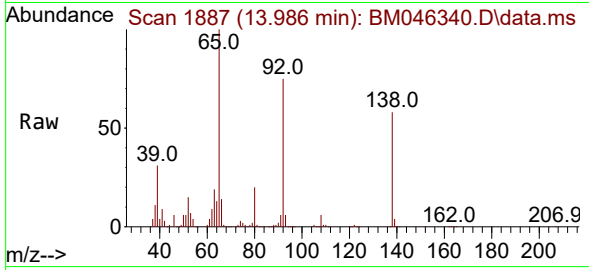


#53
 3-Nitroaniline
 Concen: 67.741 ng
 RT: 13.986 min Scan# 11
 Delta R.T. 0.000 min
 Lab File: BM046340.D
 Acq: 27 Jun 2024 20:13

Instrument : BNA_M
 ClientSampleId : SSTDICC060

Tgt Ion:138 Resp: 482111

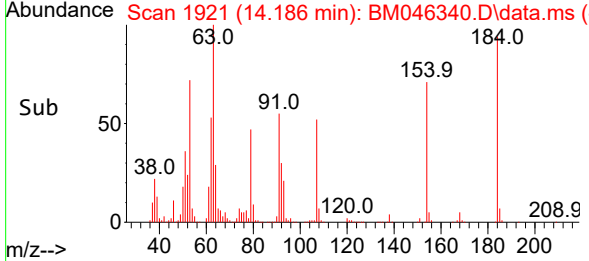
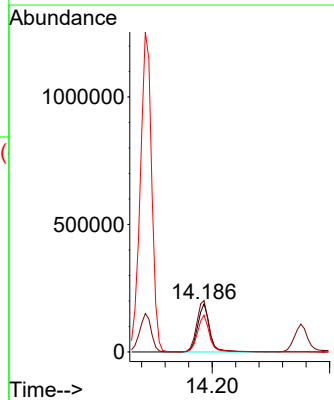
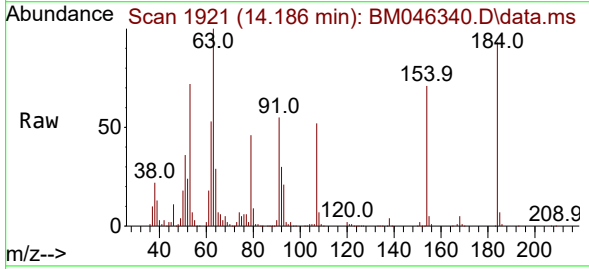
Ion	Ratio	Lower	Upper
138	100		
108	10.0	7.4	11.0
92	129.6	99.3	148.9

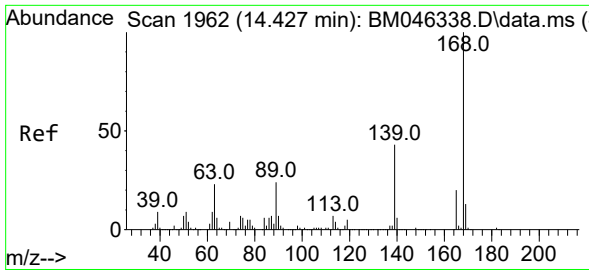


#54
 2,4-Dinitrophenol
 Concen: 82.731 ng
 RT: 14.186 min Scan# 1921
 Delta R.T. 0.006 min
 Lab File: BM046340.D
 Acq: 27 Jun 2024 20:13

Tgt Ion:184 Resp: 266122

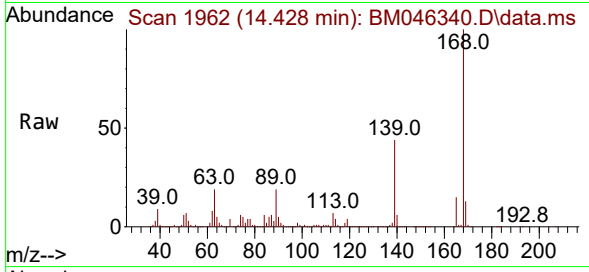
Ion	Ratio	Lower	Upper
184	100		
63	107.0	93.5	140.3
154	76.0	61.2	91.8



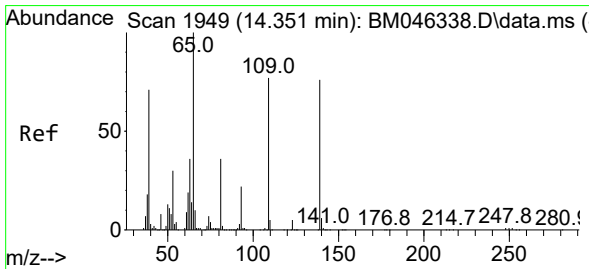
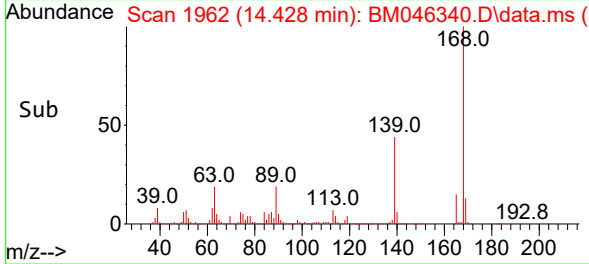
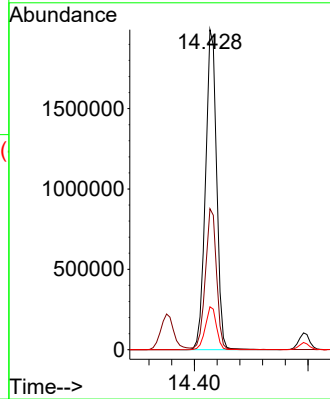


#55
 Dibenzofuran
 Concen: 70.801 ng
 RT: 14.428 min Scan# 1962
 Delta R.T. 0.000 min
 Lab File: BM046340.D
 Acq: 27 Jun 2024 20:13

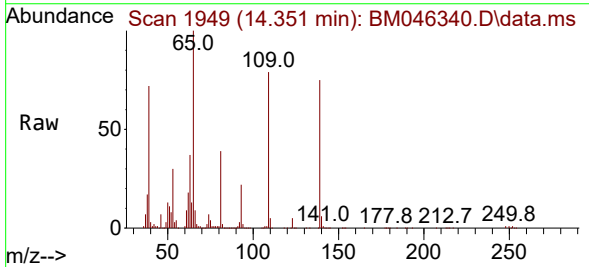
Instrument :
 BNA_M
 ClientSampleId :
 SSTDICC060



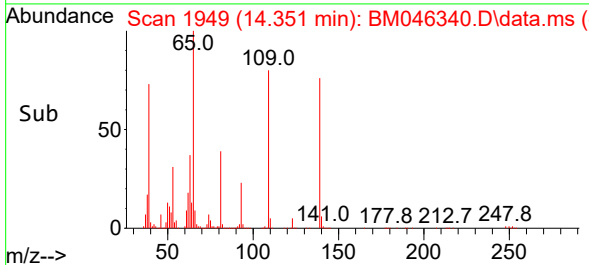
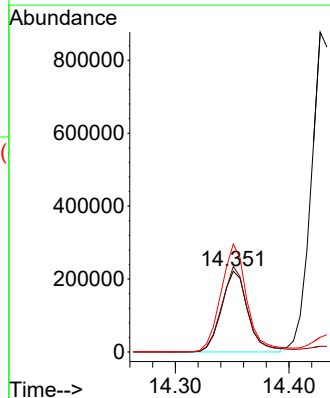
Tgt Ion:168 Resp: 2689962
 Ion Ratio Lower Upper
 168 100
 139 44.1 35.4 53.2
 169 13.4 10.7 16.1

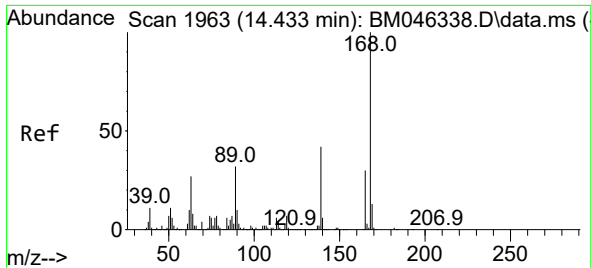


#56
 4-Nitrophenol
 Concen: 58.936 ng
 RT: 14.351 min Scan# 1949
 Delta R.T. 0.000 min
 Lab File: BM046340.D
 Acq: 27 Jun 2024 20:13



Tgt Ion:139 Resp: 356613
 Ion Ratio Lower Upper
 139 100
 109 105.9 82.0 122.0
 65 133.5 112.0 152.0





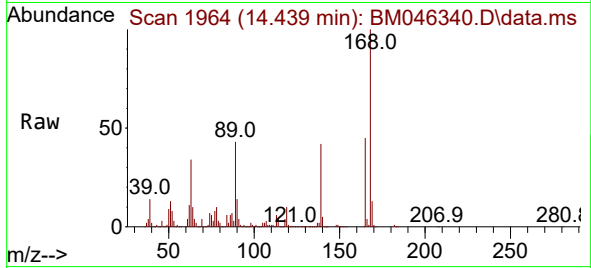
#57
 2,4-Dinitrotoluene
 Concen: 74.833 ng
 RT: 14.439 min Scan# 1964
 Delta R.T. 0.006 min
 Lab File: BM046340.D
 Acq: 27 Jun 2024 20:13

Instrument :

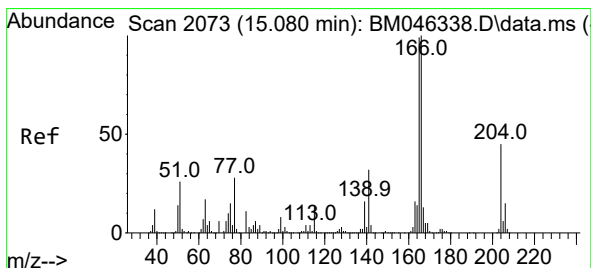
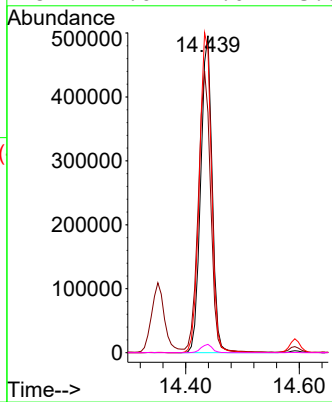
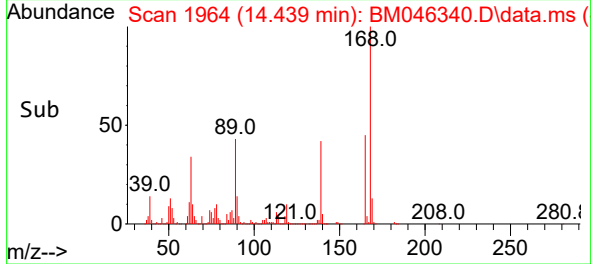
BNA_M

ClientSampleId :

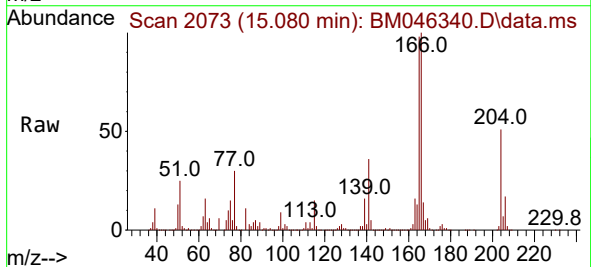
SSTDICC060



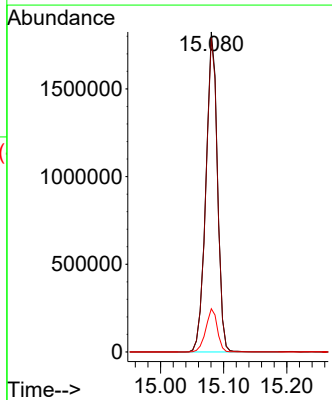
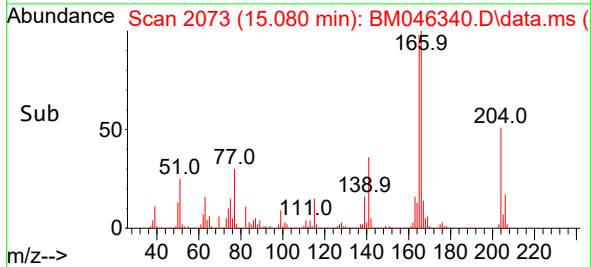
Tgt Ion:165 Resp: 693422
 Ion Ratio Lower Upper
 165 100
 63 75.8 74.2 111.2
 89 95.6 86.1 129.1
 182 2.6 2.0 3.0

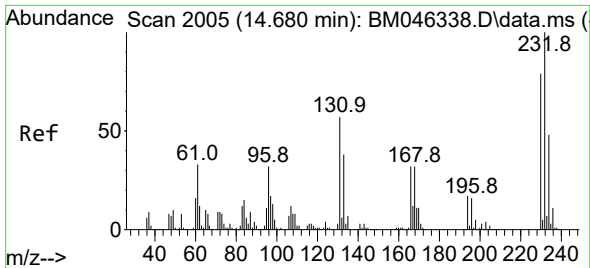


#58
 Fluorene
 Concen: 74.733 ng
 RT: 15.080 min Scan# 2073
 Delta R.T. 0.000 min
 Lab File: BM046340.D
 Acq: 27 Jun 2024 20:13



Tgt Ion:166 Resp: 2320643
 Ion Ratio Lower Upper
 166 100
 165 98.2 79.4 119.0
 167 13.5 10.7 16.1

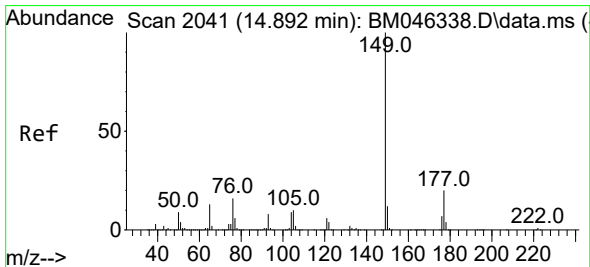
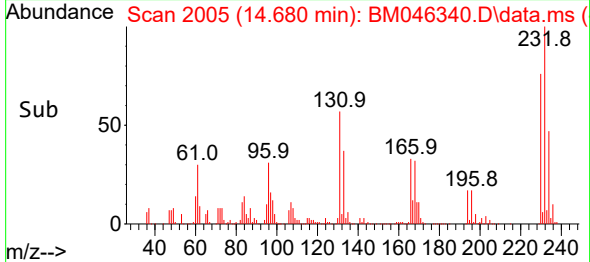
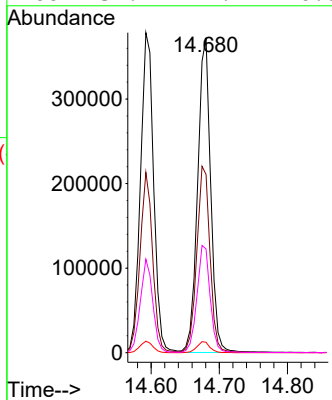
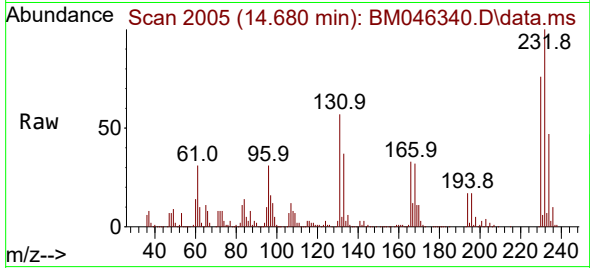




#59
 2,3,4,6-Tetrachlorophenol
 Concen: 64.040 ng
 RT: 14.680 min Scan# 2005
 Delta R.T. 0.000 min
 Lab File: BM046340.D
 Acq: 27 Jun 2024 20:13

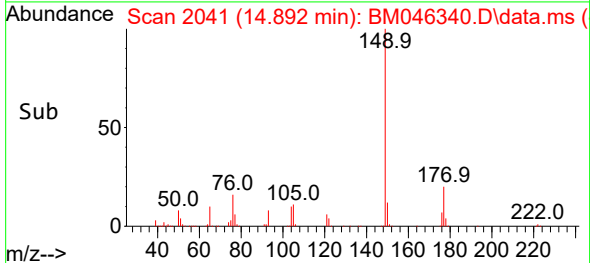
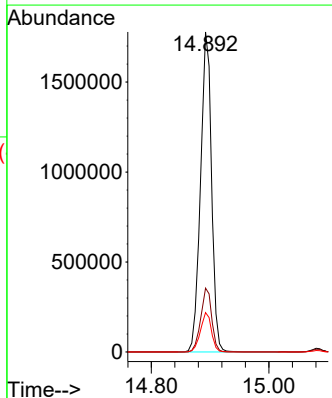
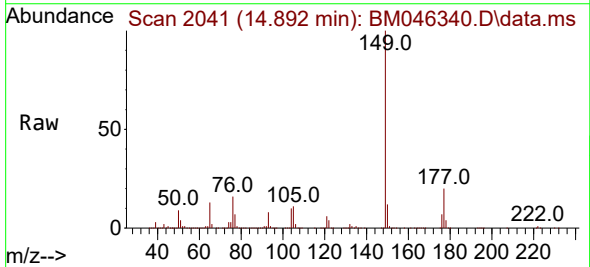
Instrument :
 BNA_M
 ClientSampleId :
 SSTDICC060

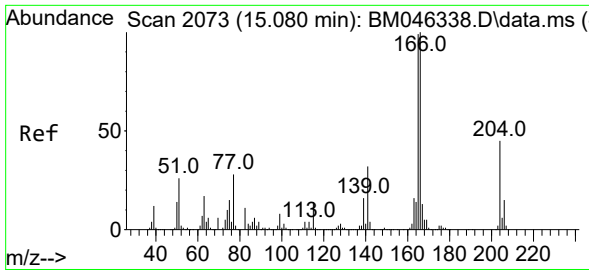
Tgt Ion:232 Resp: 495439
 Ion Ratio Lower Upper
 232 100
 131 60.4 48.3 72.5
 130 3.5 2.7 4.1
 166 34.2 27.2 40.8



#60
 Diethylphthalate
 Concen: 67.972 ng
 RT: 14.892 min Scan# 2041
 Delta R.T. 0.000 min
 Lab File: BM046340.D
 Acq: 27 Jun 2024 20:13

Tgt Ion:149 Resp: 2309122
 Ion Ratio Lower Upper
 149 100
 177 19.9 15.8 23.8
 150 12.3 9.9 14.9

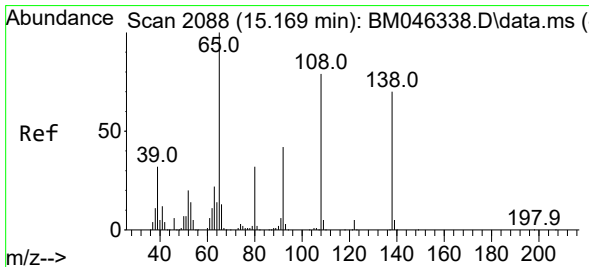
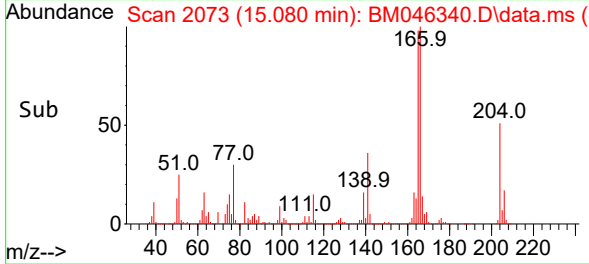
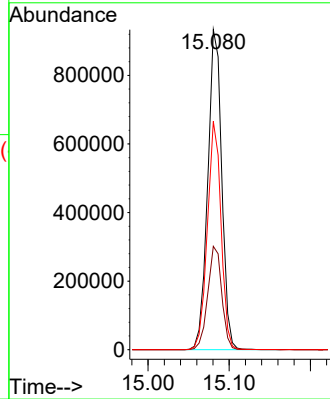
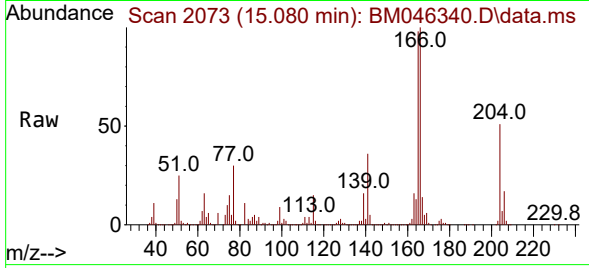




#61
 4-Chlorophenyl-phenylether
 Concen: 73.326 ng
 RT: 15.080 min Scan# 2073
 Delta R.T. 0.000 min
 Lab File: BM046340.D
 Acq: 27 Jun 2024 20:13

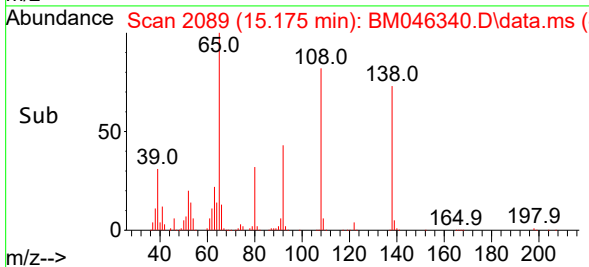
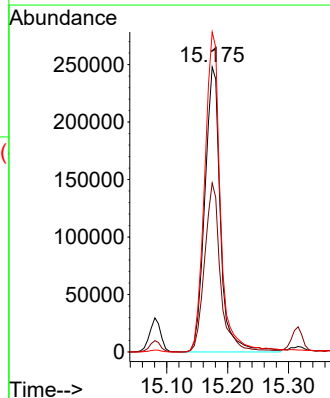
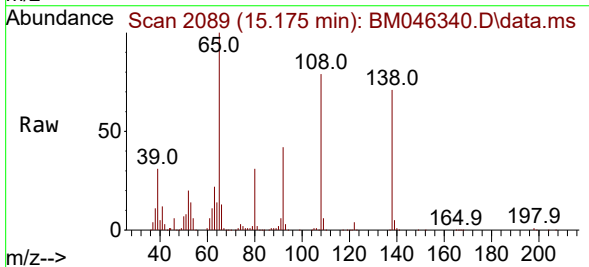
Instrument :
 BNA_M
 ClientSampleId :
 SSTDICC060

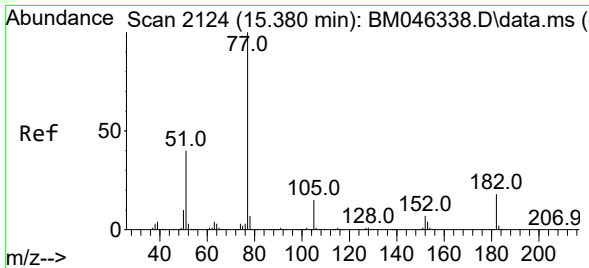
Tgt Ion:204 Resp: 1114276
 Ion Ratio Lower Upper
 204 100
 206 32.3 25.8 38.8
 141 71.3 57.4 86.2



#62
 4-Nitroaniline
 Concen: 62.696 ng
 RT: 15.175 min Scan# 2089
 Delta R.T. 0.006 min
 Lab File: BM046340.D
 Acq: 27 Jun 2024 20:13

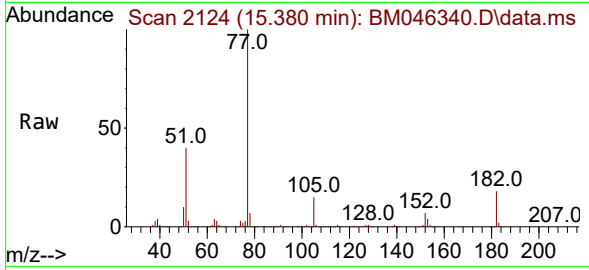
Tgt Ion:138 Resp: 443224
 Ion Ratio Lower Upper
 138 100
 92 59.3 39.5 79.5
 108 112.3 91.6 131.6



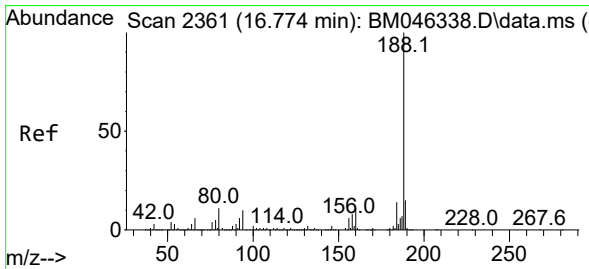
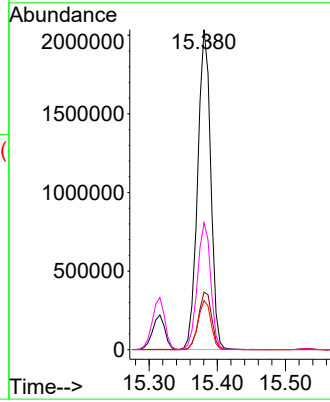
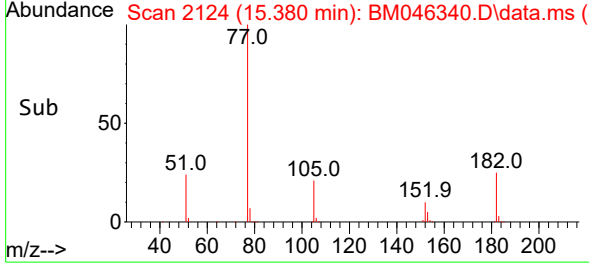


#63
 Azobenzene
 Concen: 82.260 ng
 RT: 15.380 min Scan# 2124
 Delta R.T. 0.000 min
 Lab File: BM046340.D
 Acq: 27 Jun 2024 20:13

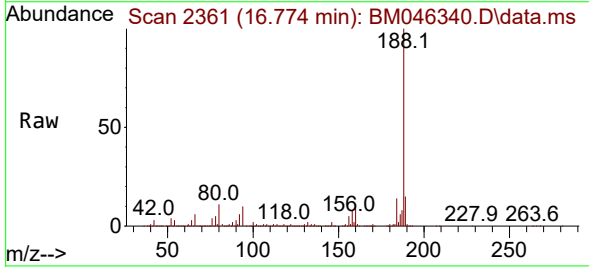
Instrument :
 BNA_M
 ClientSampleId :
 SSTDICC060



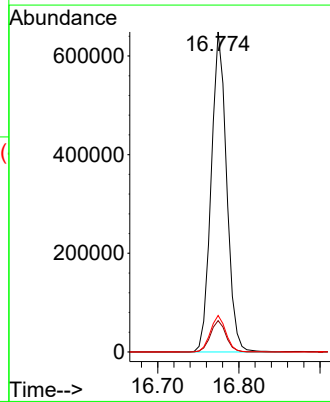
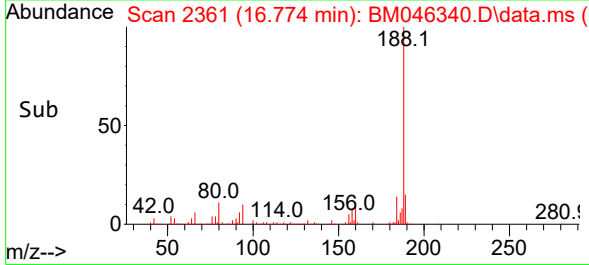
Tgt Ion: 77 Resp: 2707833
 Ion Ratio Lower Upper
 77 100
 182 18.0 0.0 37.9
 105 15.4 0.0 35.1
 51 39.6 20.6 60.6

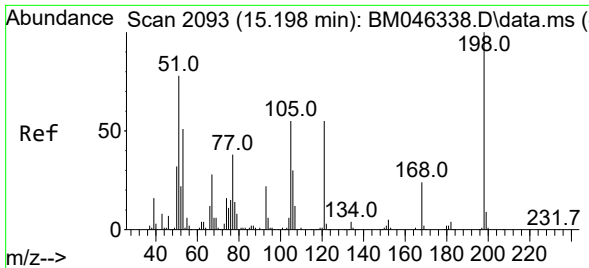


#64
 Phenanthrene-d10
 Concen: 20.000 ng
 RT: 16.774 min Scan# 2361
 Delta R.T. 0.000 min
 Lab File: BM046340.D
 Acq: 27 Jun 2024 20:13



Tgt Ion: 188 Resp: 856201
 Ion Ratio Lower Upper
 188 100
 94 9.8 7.9 11.9
 80 11.4 9.0 13.6

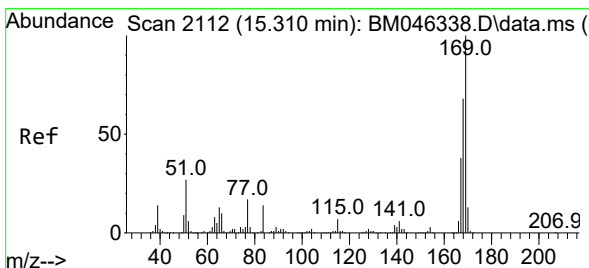
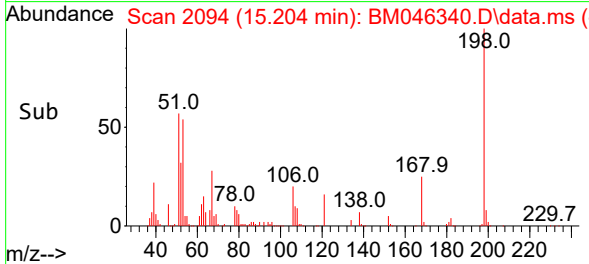
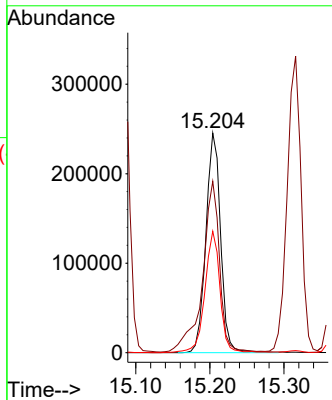
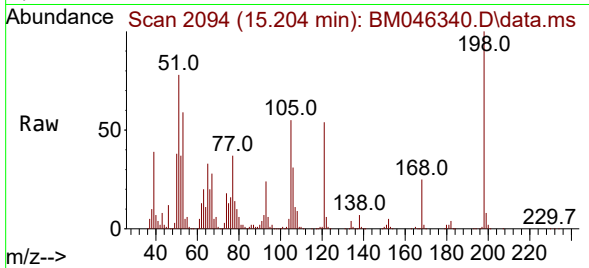




#65
 4,6-Dinitro-2-methylphenol
 Concen: 86.282 ng
 RT: 15.204 min Scan# 2094
 Delta R.T. 0.006 min
 Lab File: BM046340.D
 Acq: 27 Jun 2024 20:13

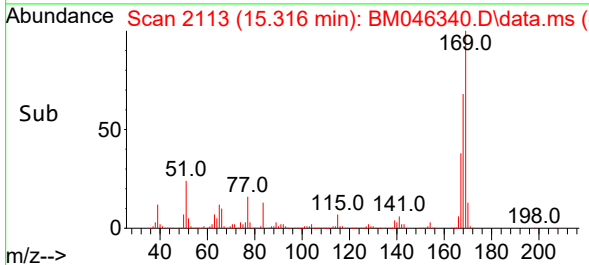
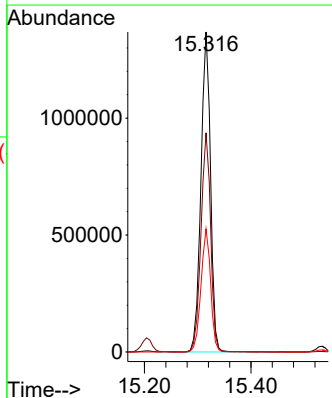
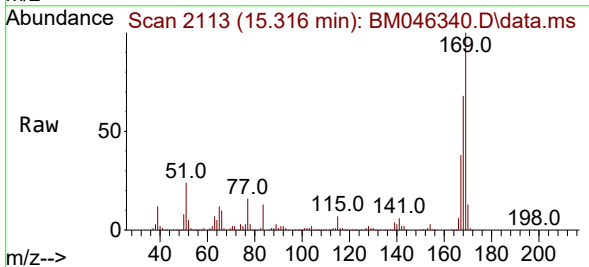
Instrument :
 BNA_M
 ClientSampleId :
 SSTDICC060

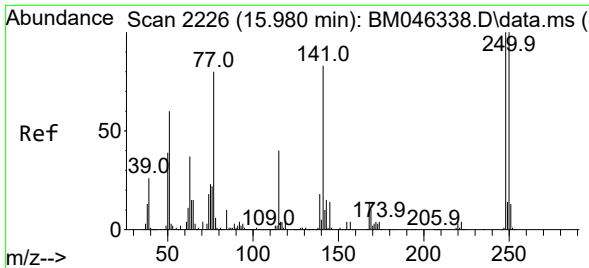
Tgt Ion:198 Resp: 338902
 Ion Ratio Lower Upper
 198 100
 51 78.0 65.1 105.1
 105 55.3 36.0 76.0



#66
 n-Nitrosodiphenylamine
 Concen: 77.740 ng
 RT: 15.316 min Scan# 2113
 Delta R.T. 0.006 min
 Lab File: BM046340.D
 Acq: 27 Jun 2024 20:13

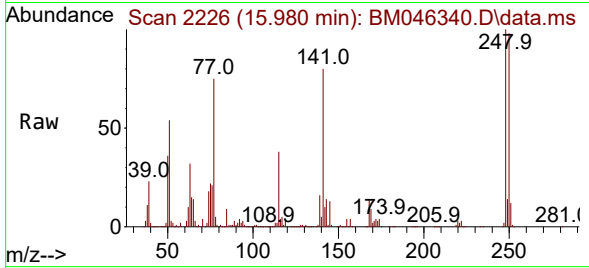
Tgt Ion:169 Resp: 1704031
 Ion Ratio Lower Upper
 169 100
 168 68.5 54.2 81.4
 167 38.4 30.2 45.2



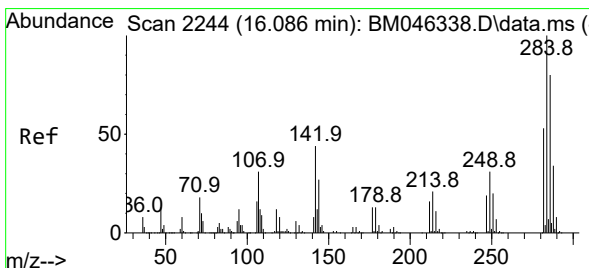
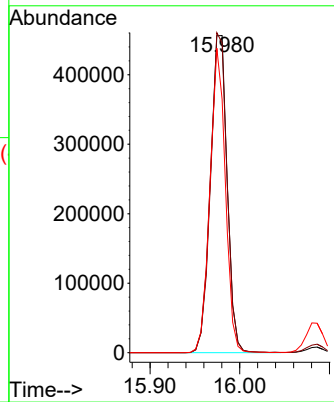
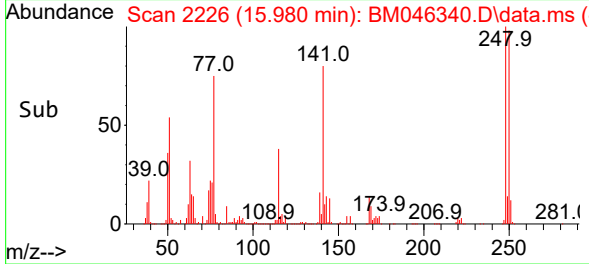


#67
 4-Bromophenyl-phenylether
 Concen: 73.178 ng
 RT: 15.980 min Scan# 21
 Delta R.T. 0.000 min
 Lab File: BM046340.D
 Acq: 27 Jun 2024 20:13

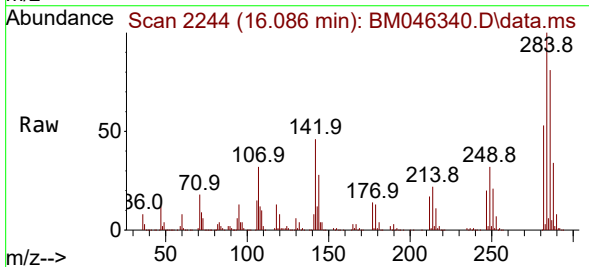
Instrument :
 BNA_M
 ClientSampleId :
 SSTDICC060



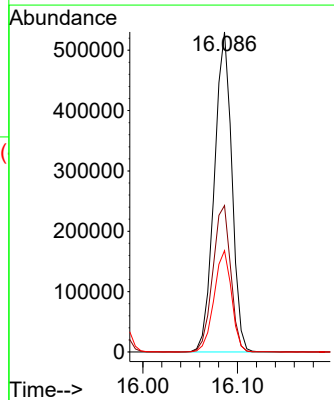
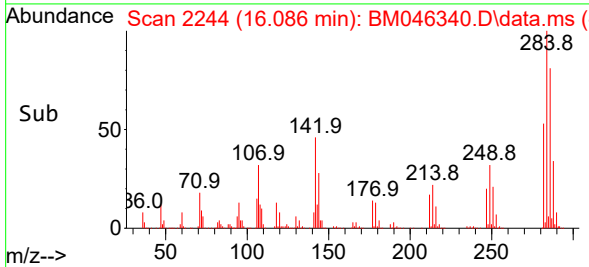
Tgt Ion:248 Resp: 595297
 Ion Ratio Lower Upper
 248 100
 250 97.6 79.8 119.6
 141 79.9 66.2 99.2

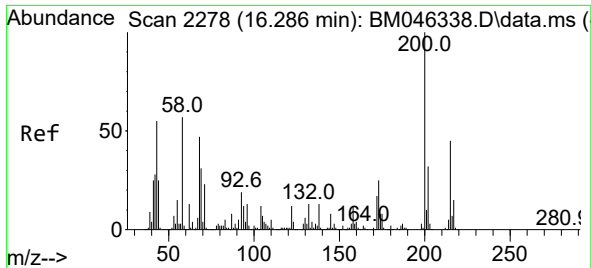


#68
 Hexachlorobenzene
 Concen: 70.239 ng
 RT: 16.086 min Scan# 2244
 Delta R.T. 0.000 min
 Lab File: BM046340.D
 Acq: 27 Jun 2024 20:13



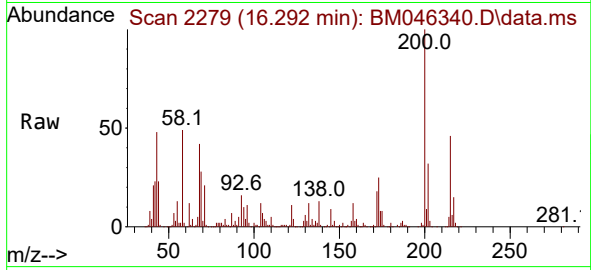
Tgt Ion:284 Resp: 680637
 Ion Ratio Lower Upper
 284 100
 142 45.7 34.8 52.2
 249 31.6 24.5 36.7



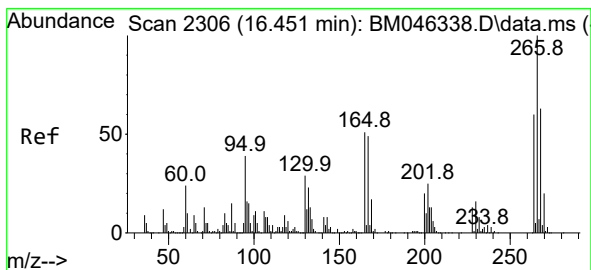
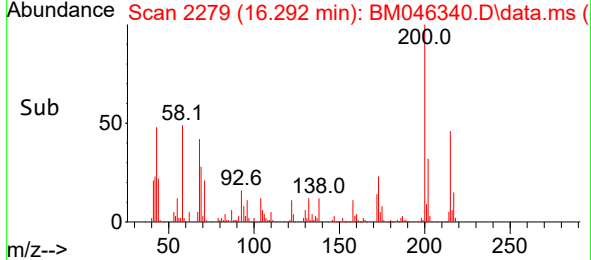
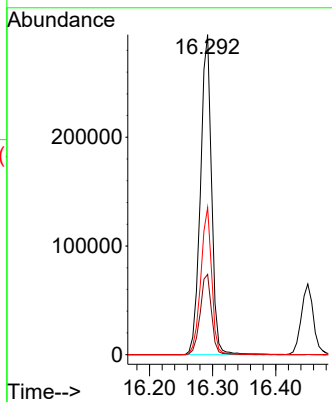


#69
 Atrazine
 Concen: 53.979 ng
 RT: 16.292 min Scan# 21
 Delta R.T. 0.006 min
 Lab File: BM046340.D
 Acq: 27 Jun 2024 20:13

Instrument :
 BNA_M
 ClientSampleId :
 SSTDICC060

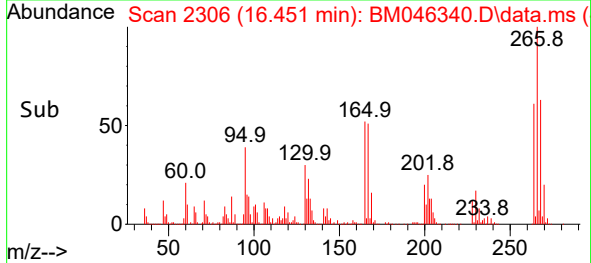
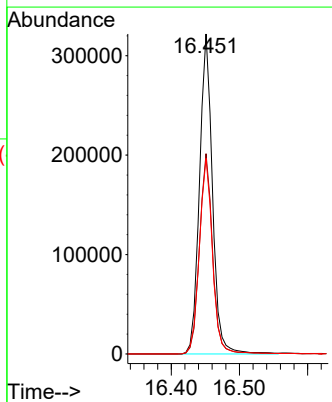
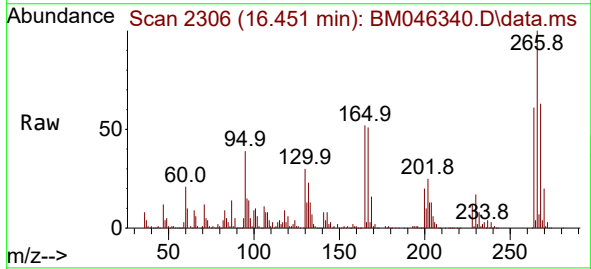


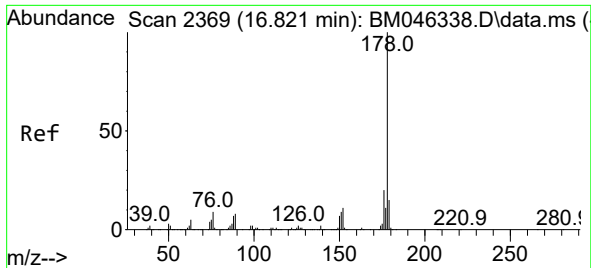
Tgt Ion:200 Resp: 361298
 Ion Ratio Lower Upper
 200 100
 173 25.1 4.9 44.9
 215 46.0 25.0 65.0



#70
 Pentachlorophenol
 Concen: 72.238 ng
 RT: 16.451 min Scan# 2306
 Delta R.T. 0.000 min
 Lab File: BM046340.D
 Acq: 27 Jun 2024 20:13

Tgt Ion:266 Resp: 427039
 Ion Ratio Lower Upper
 266 100
 268 62.6 50.3 75.5
 264 61.1 48.4 72.6



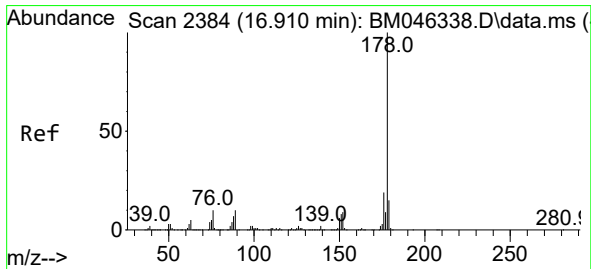
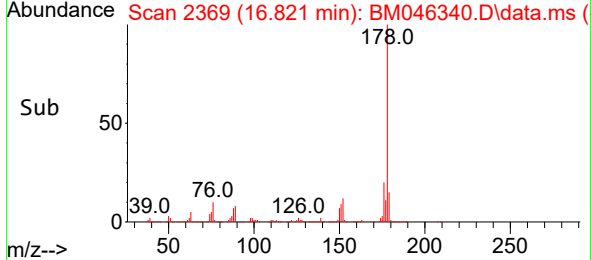
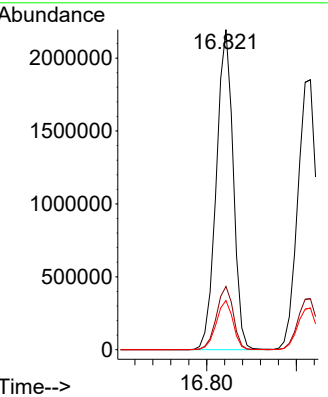
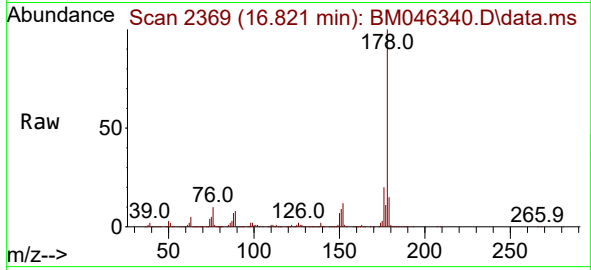


#71
 Phenanthrene
 Concen: 70.754 ng
 RT: 16.821 min Scan# 21
 Delta R.T. 0.000 min
 Lab File: BM046340.D
 Acq: 27 Jun 2024 20:13

Instrument :
 BNA_M
 ClientSampleId :
 SSTDICC060

Tgt Ion:178 Resp: 2859327

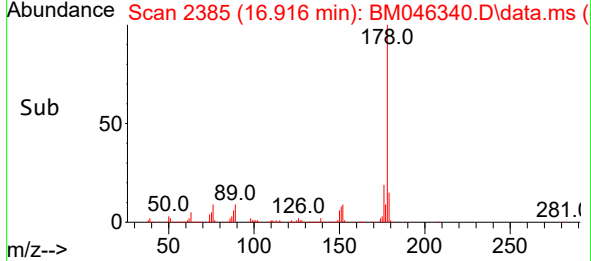
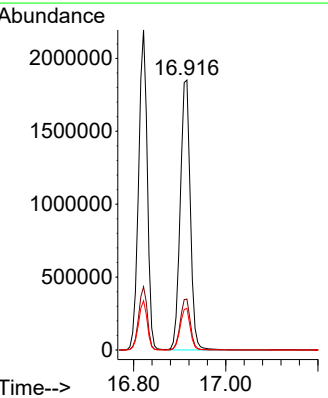
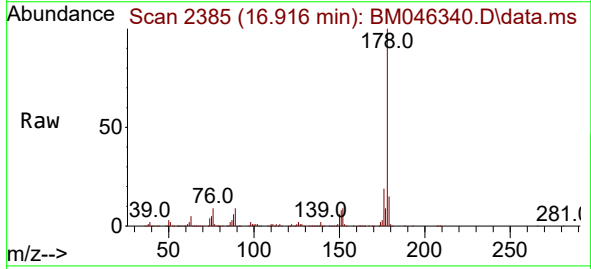
Ion	Ratio	Lower	Upper
178	100		
176	19.8	15.8	23.8
179	15.4	12.2	18.4

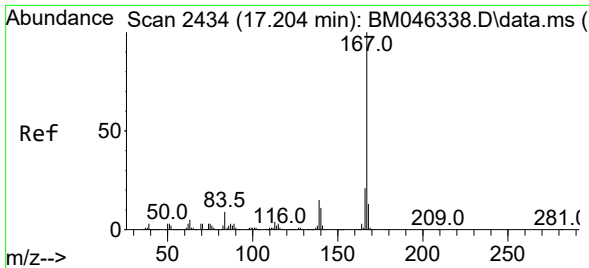


#72
 Anthracene
 Concen: 70.139 ng
 RT: 16.916 min Scan# 2385
 Delta R.T. 0.006 min
 Lab File: BM046340.D
 Acq: 27 Jun 2024 20:13

Tgt Ion:178 Resp: 2786734

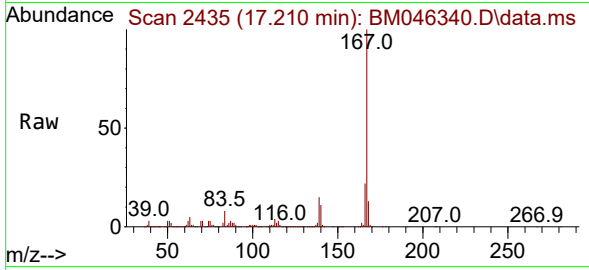
Ion	Ratio	Lower	Upper
178	100		
176	18.9	15.1	22.7
179	15.4	12.0	18.0



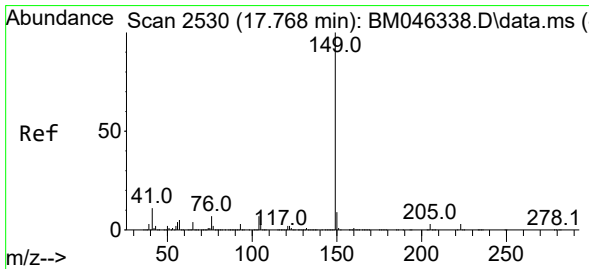
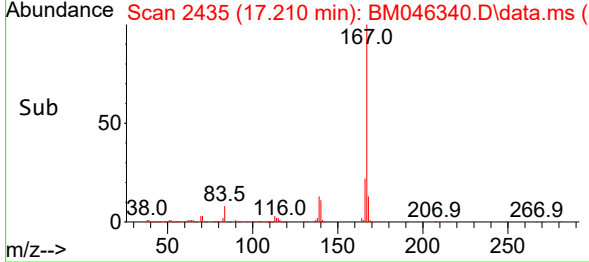
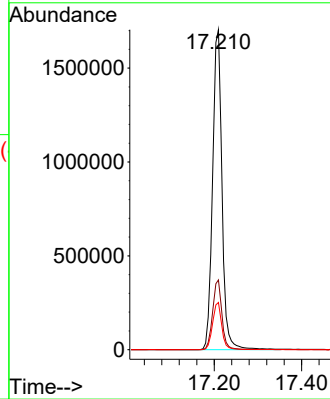


#73
 Carbazole
 Concen: 64.281 ng
 RT: 17.210 min Scan# 2435
 Delta R.T. 0.006 min
 Lab File: BM046340.D
 Acq: 27 Jun 2024 20:13

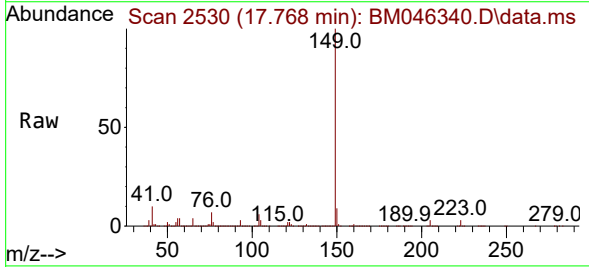
Instrument :
 BNA_M
 ClientSampleId :
 SSTDICC060



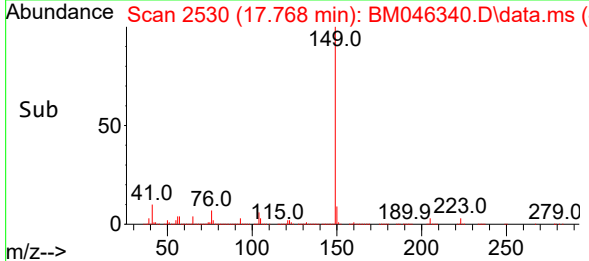
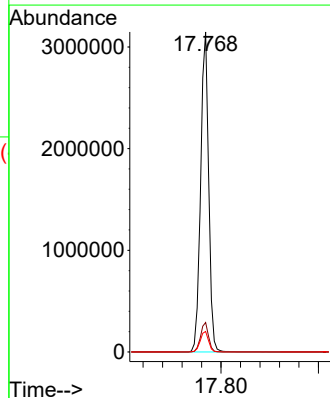
Tgt Ion:167 Resp: 2555613
 Ion Ratio Lower Upper
 167 100
 166 21.8 17.1 25.7
 139 14.8 11.8 17.6

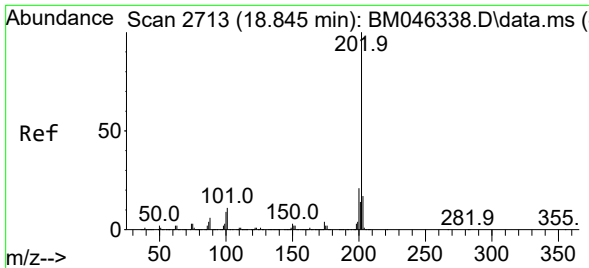


#74
 Di-n-butylphthalate
 Concen: 73.114 ng
 RT: 17.768 min Scan# 2530
 Delta R.T. 0.000 min
 Lab File: BM046340.D
 Acq: 27 Jun 2024 20:13



Tgt Ion:149 Resp: 3609490
 Ion Ratio Lower Upper
 149 100
 150 9.2 7.2 10.8
 104 6.4 5.4 8.2



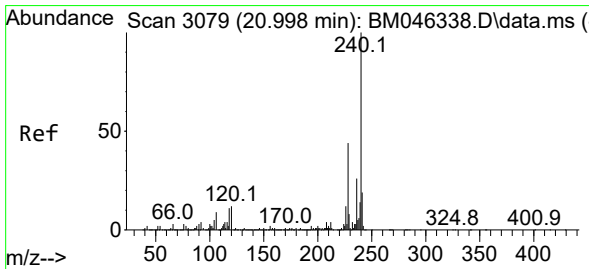
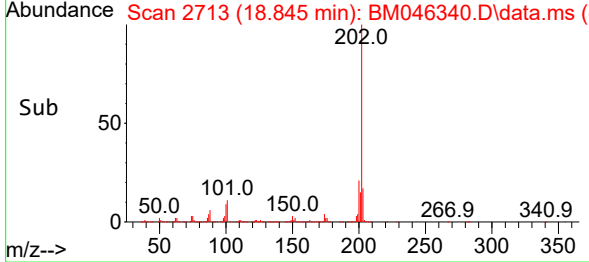
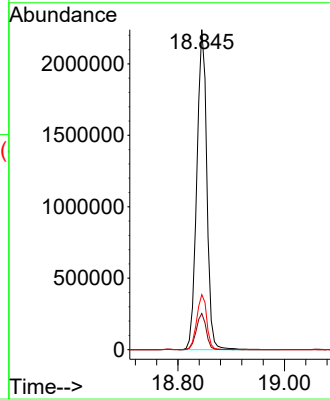
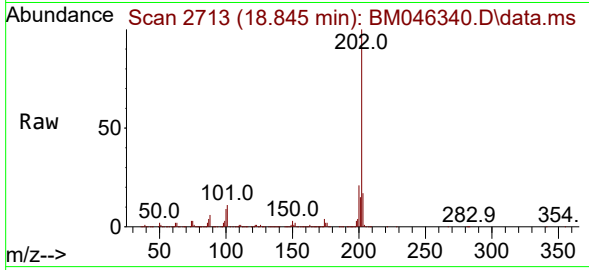


#75
 Fluoranthene
 Concen: 59.420 ng
 RT: 18.845 min Scan# 21
 Delta R.T. 0.000 min
 Lab File: BM046340.D
 Acq: 27 Jun 2024 20:13

Instrument :
 BNA_M
 ClientSampleId :
 SSTDICC060

Tgt Ion:202 Resp: 2927937

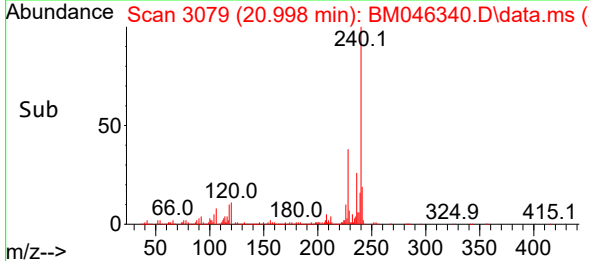
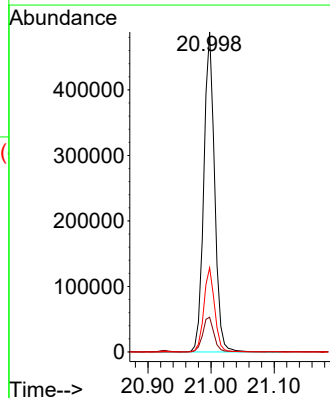
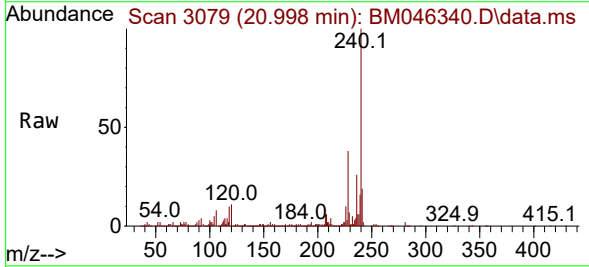
Ion	Ratio	Lower	Upper
202	100		
101	11.3	0.0	31.4
203	17.2	0.0	37.2

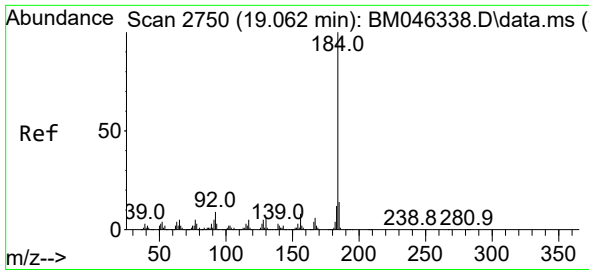


#76
 Chrysene-d12
 Concen: 20.000 ng
 RT: 20.998 min Scan# 3079
 Delta R.T. 0.000 min
 Lab File: BM046340.D
 Acq: 27 Jun 2024 20:13

Tgt Ion:240 Resp: 581647

Ion	Ratio	Lower	Upper
240	100		
120	10.8	9.3	13.9
236	26.3	20.5	30.7



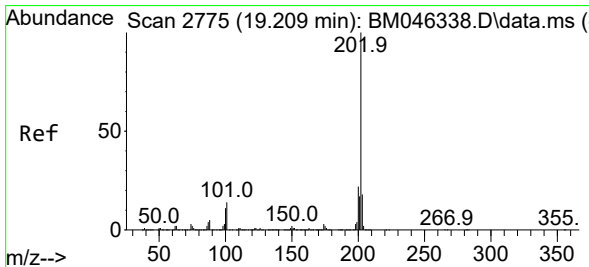
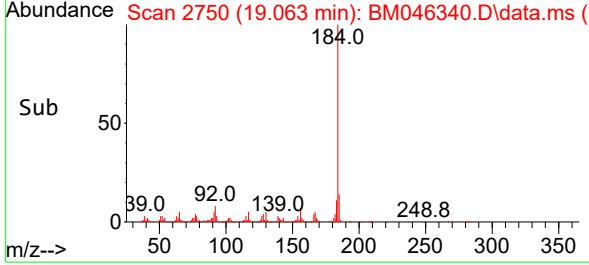
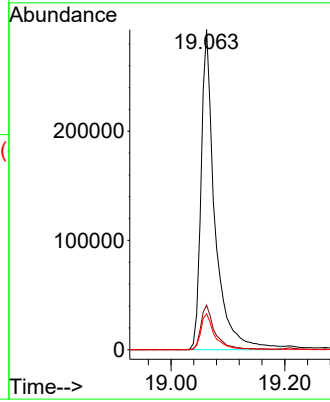
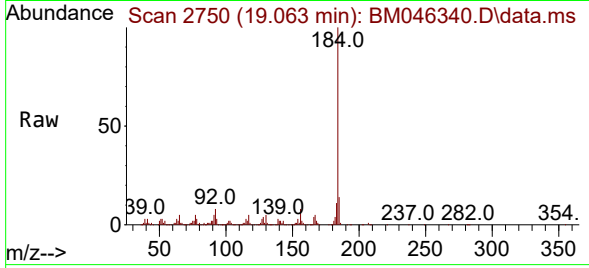


#77
Benzidine
Concen: 49.913 ng
RT: 19.063 min Scan# 21
Delta R.T. 0.000 min
Lab File: BM046340.D
Acq: 27 Jun 2024 20:13

Instrument :
BNA_M
ClientSampleId :
SSTDICC060

Tgt Ion:184 Resp: 495750

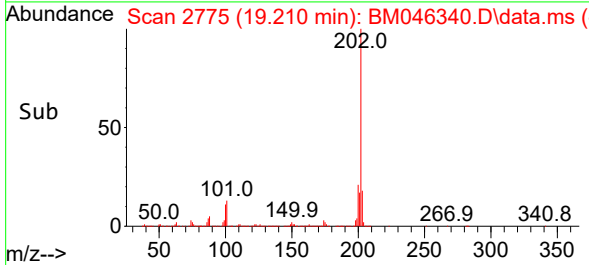
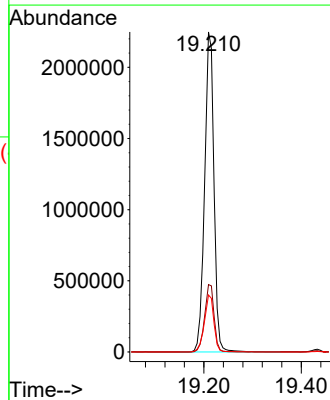
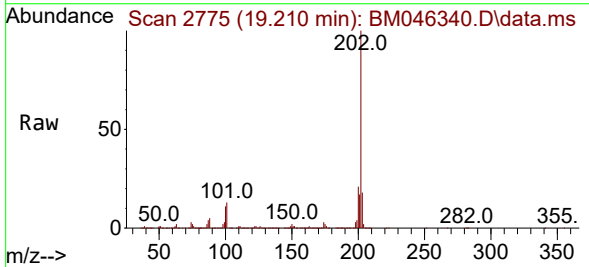
Ion	Ratio	Lower	Upper
184	100		
185	13.9	11.1	16.7
183	11.2	9.4	14.2

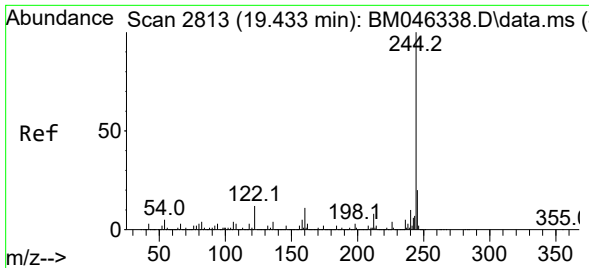


#78
Pyrene
Concen: 72.615 ng
RT: 19.210 min Scan# 2775
Delta R.T. 0.000 min
Lab File: BM046340.D
Acq: 27 Jun 2024 20:13

Tgt Ion:202 Resp: 2979469

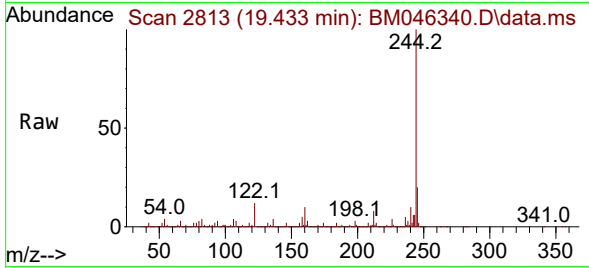
Ion	Ratio	Lower	Upper
202	100		
200	21.0	17.3	25.9
203	17.8	14.3	21.5



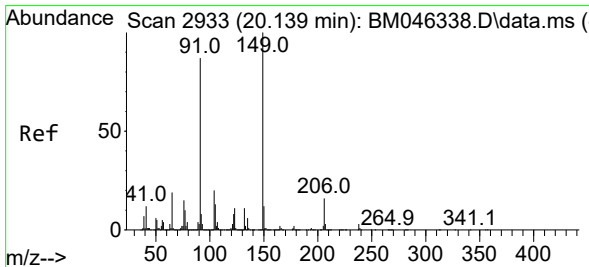
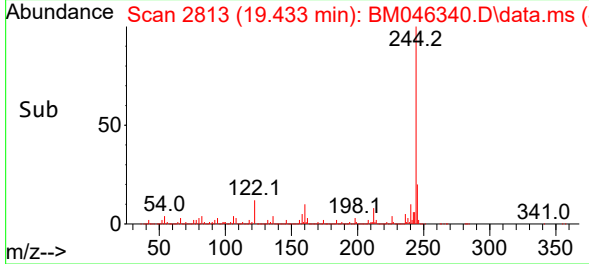
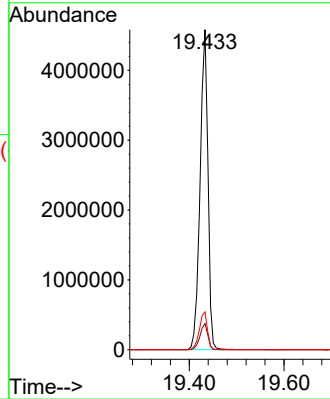


#79
 Terphenyl-d14
 Concen: 166.727 ng
 RT: 19.433 min Scan# 2813
 Delta R.T. 0.000 min
 Lab File: BM046340.D
 Acq: 27 Jun 2024 20:13

Instrument :
 BNA_M
 ClientSampleId :
 SSTDICC060

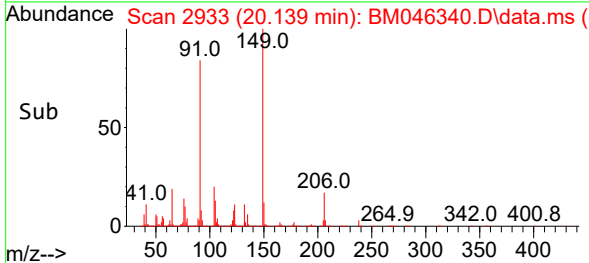
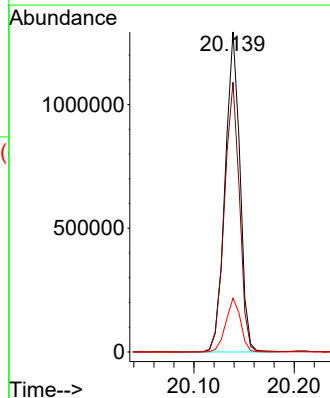
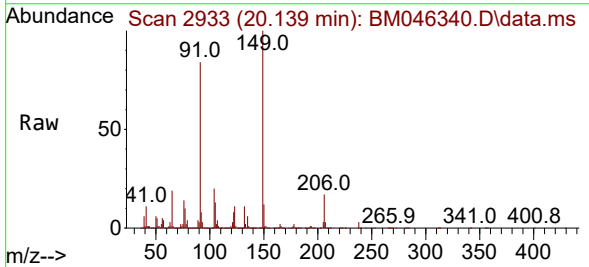


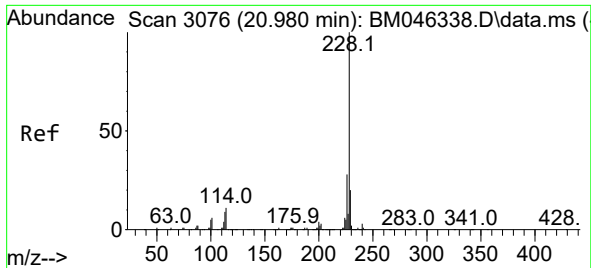
Tgt Ion:244 Resp: 5268880
 Ion Ratio Lower Upper
 244 100
 212 8.2 6.5 9.7
 122 11.8 9.4 14.0



#80
 Butylbenzylphthalate
 Concen: 74.234 ng
 RT: 20.139 min Scan# 2933
 Delta R.T. 0.000 min
 Lab File: BM046340.D
 Acq: 27 Jun 2024 20:13

Tgt Ion:149 Resp: 1319348
 Ion Ratio Lower Upper
 149 100
 91 84.3 69.5 104.3
 206 16.8 13.0 19.6



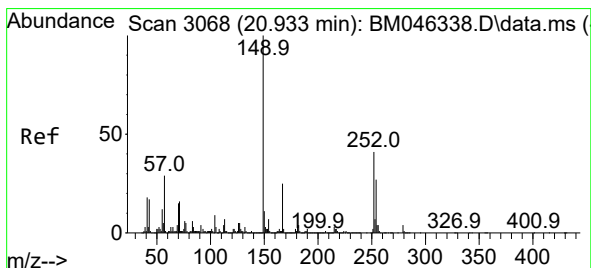
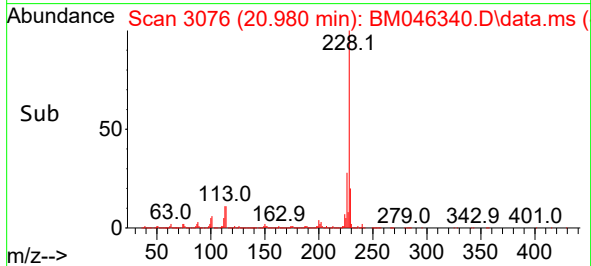
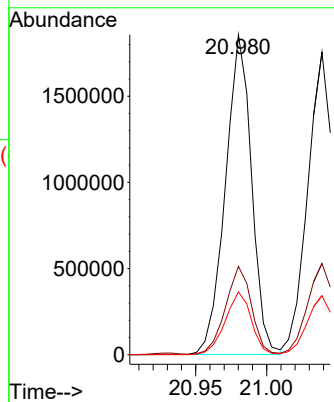
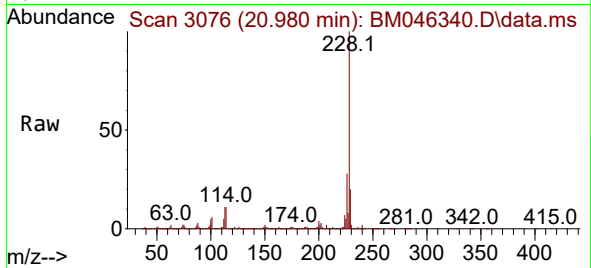


#81
 Benzo(a)anthracene
 Concen: 64.269 ng
 RT: 20.980 min Scan# 3076
 Delta R.T. 0.000 min
 Lab File: BM046340.D
 Acq: 27 Jun 2024 20:13

Instrument :
 BNA_M
 ClientSampleId :
 SSTDICC060

Tgt Ion:228 Resp: 2380969

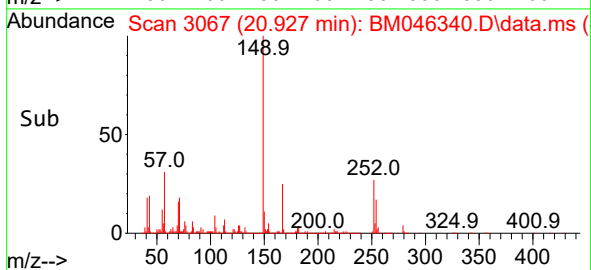
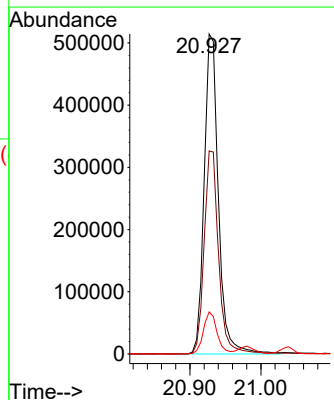
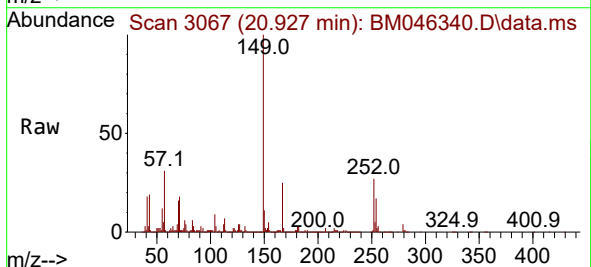
Ion	Ratio	Lower	Upper
228	100		
226	27.6	22.5	33.7
229	19.6	15.9	23.9

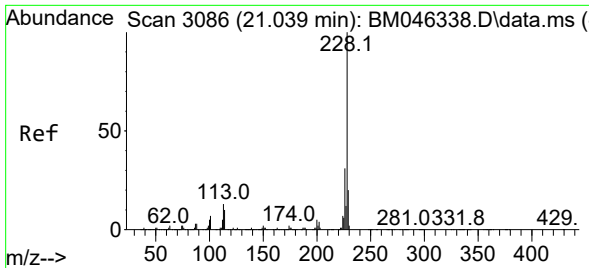


#82
 3,3'-Dichlorobenzidine
 Concen: 56.602 ng
 RT: 20.927 min Scan# 3067
 Delta R.T. -0.006 min
 Lab File: BM046340.D
 Acq: 27 Jun 2024 20:13

Tgt Ion:252 Resp: 718605

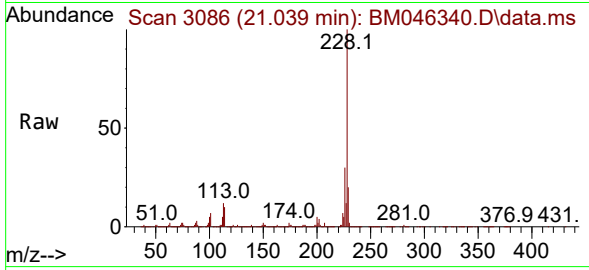
Ion	Ratio	Lower	Upper
252	100		
254	63.5	52.6	79.0
126	13.2	10.2	15.4



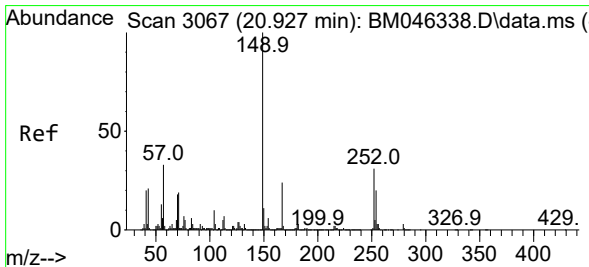
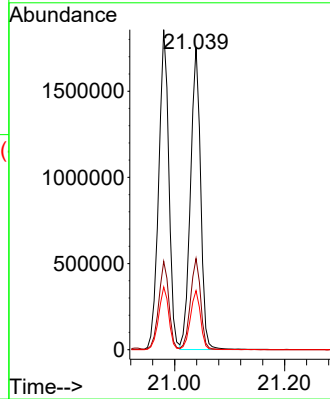
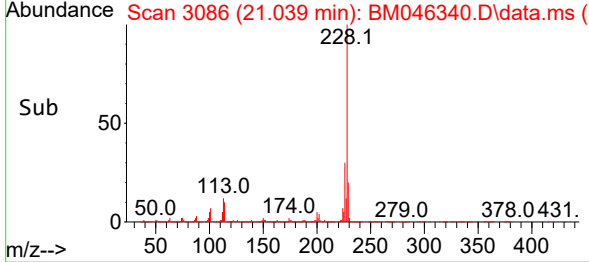


#83
 Chrysene
 Concen: 64.220 ng
 RT: 21.039 min Scan# 3086
 Delta R.T. 0.000 min
 Lab File: BM046340.D
 Acq: 27 Jun 2024 20:13

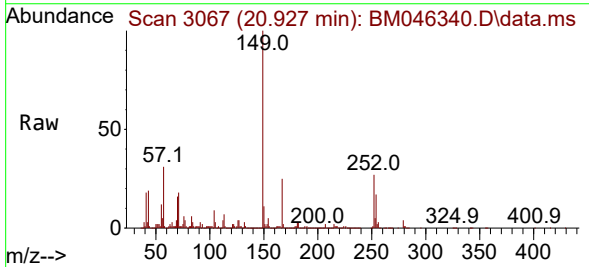
Instrument : BNA_M
 ClientSampleId : SSTDICC060



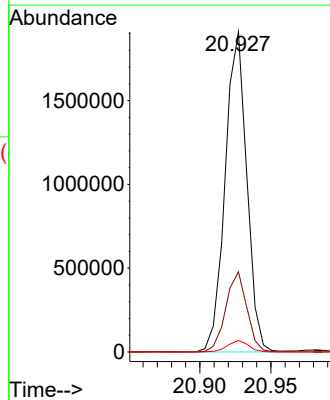
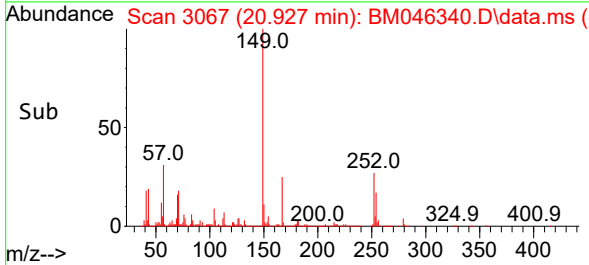
Tgt Ion:228 Resp: 2231576
 Ion Ratio Lower Upper
 228 100
 226 30.1 24.6 36.8
 229 19.5 15.9 23.9

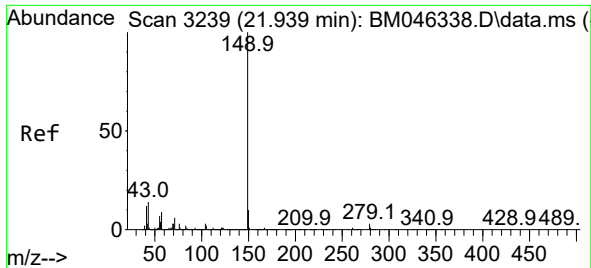


#84
 Bis(2-ethylhexyl)phthalate
 Concen: 80.708 ng
 RT: 20.927 min Scan# 3067
 Delta R.T. 0.000 min
 Lab File: BM046340.D
 Acq: 27 Jun 2024 20:13



Tgt Ion:149 Resp: 2014150
 Ion Ratio Lower Upper
 149 100
 167 25.0 19.6 29.4
 279 3.6 2.6 4.0



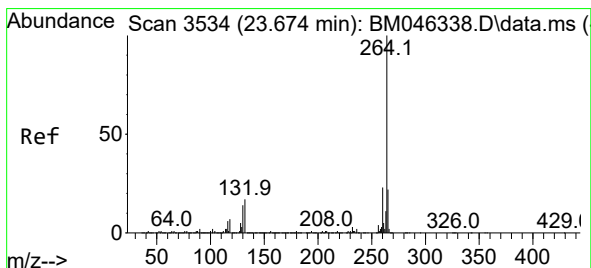
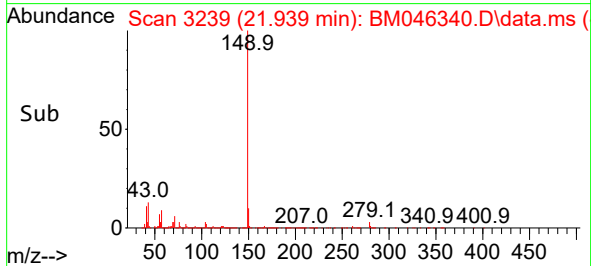
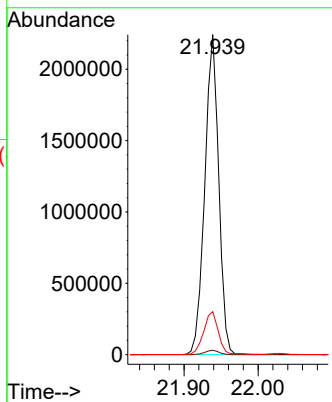
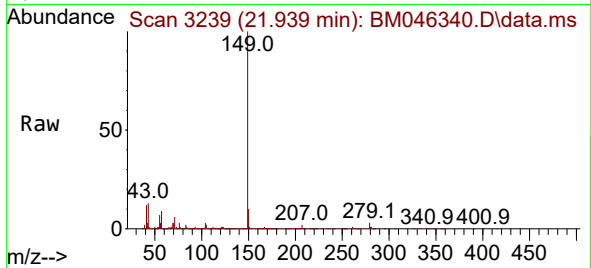


#85
 Di-n-octyl phthalate
 Concen: 67.164 ng
 RT: 21.939 min Scan# 31
 Delta R.T. 0.000 min
 Lab File: BM046340.D
 Acq: 27 Jun 2024 20:13

Instrument :
 BNA_M
 ClientSampleId :
 SSTDICC060

Tgt Ion:149 Resp: 2923111

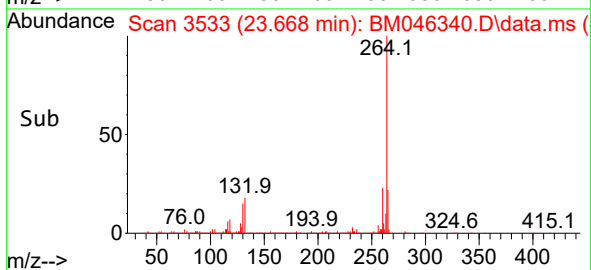
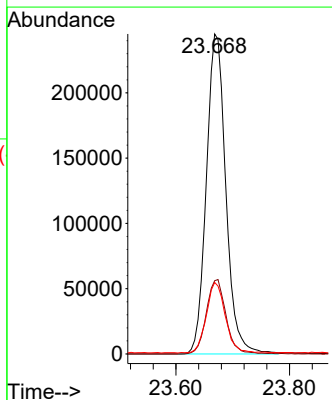
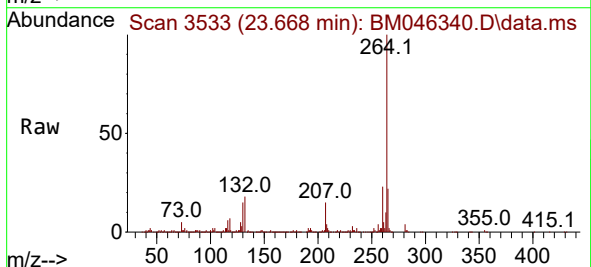
Ion	Ratio	Lower	Upper
149	100		
167	1.4	1.1	1.7
43	14.3	11.6	17.4

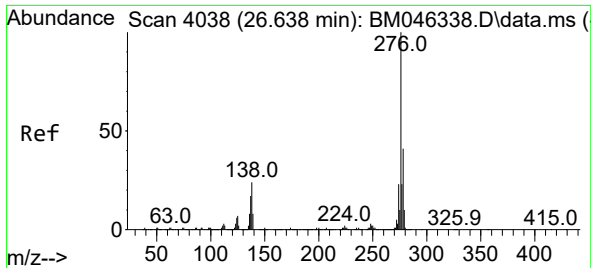


#86
 Perylene-d12
 Concen: 20.000 ng
 RT: 23.668 min Scan# 3533
 Delta R.T. -0.006 min
 Lab File: BM046340.D
 Acq: 27 Jun 2024 20:13

Tgt Ion:264 Resp: 583289

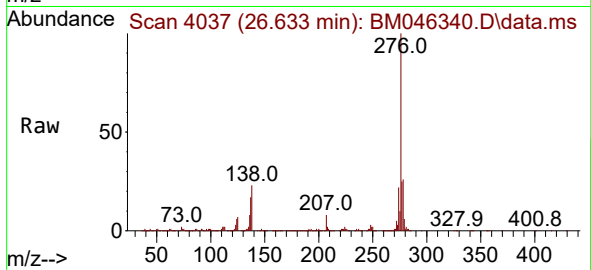
Ion	Ratio	Lower	Upper
264	100		
260	22.9	18.5	27.7
265	22.4	17.7	26.5



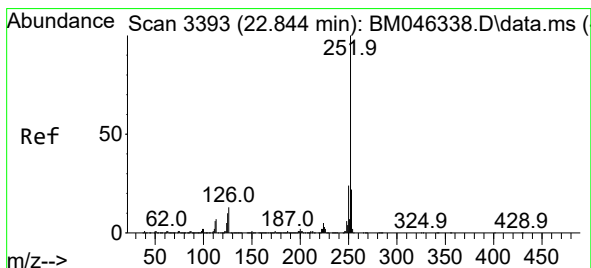
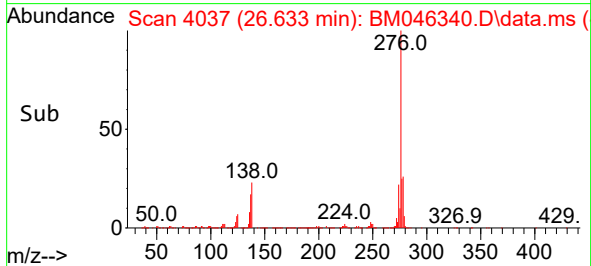
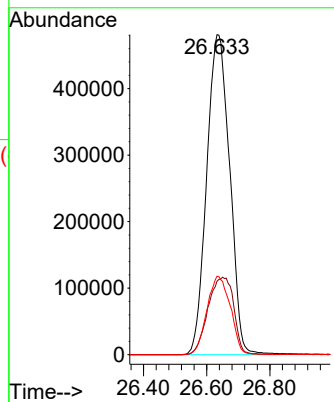


#87
 Indeno(1,2,3-cd)pyrene
 Concen: 72.462 ng
 RT: 26.633 min Scan# 4038
 Delta R.T. -0.006 min
 Lab File: BM046340.D
 Acq: 27 Jun 2024 20:13

Instrument :
 BNA_M
 ClientSampleId :
 SSTDICC060

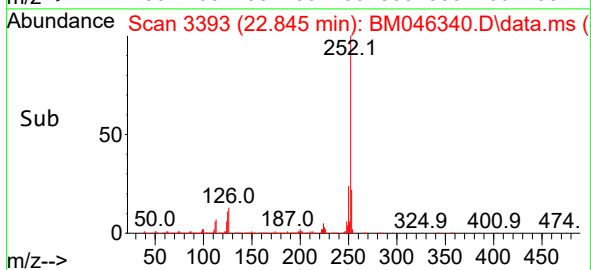
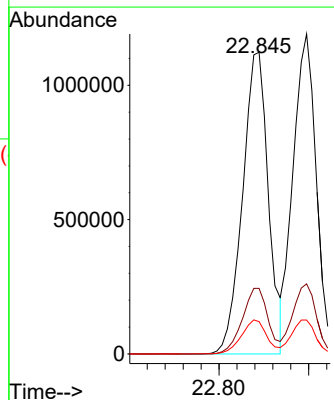
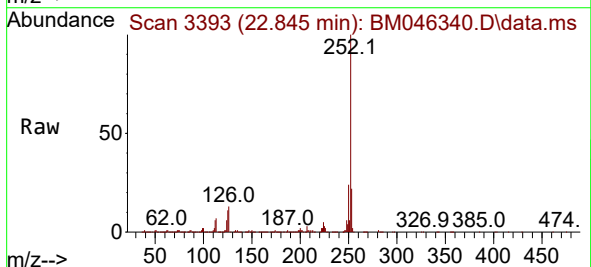


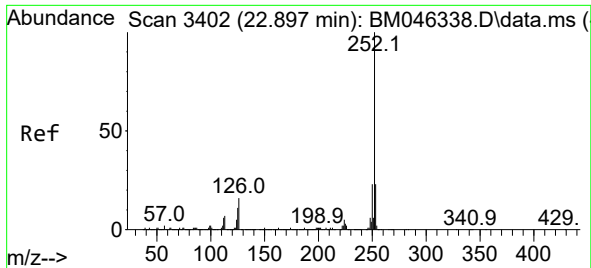
Tgt Ion:276 Resp: 2431983
 Ion Ratio Lower Upper
 276 100
 138 27.0 21.4 32.2
 277 25.0 19.8 29.8



#88
 Benzo(b)fluoranthene
 Concen: 67.736 ng
 RT: 22.845 min Scan# 3393
 Delta R.T. 0.000 min
 Lab File: BM046340.D
 Acq: 27 Jun 2024 20:13

Tgt Ion:252 Resp: 2240523
 Ion Ratio Lower Upper
 252 100
 253 21.7 17.4 26.0
 125 10.7 8.4 12.6

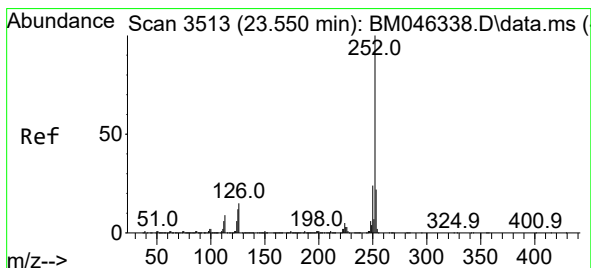
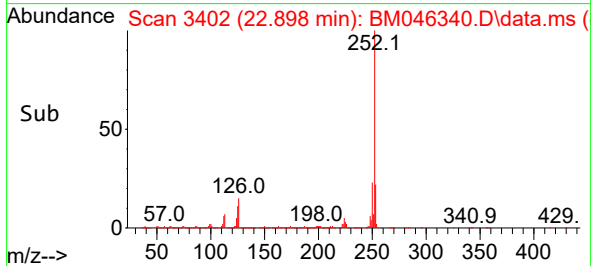
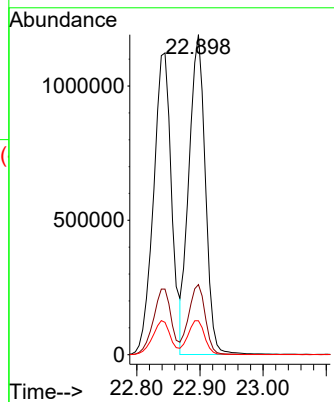
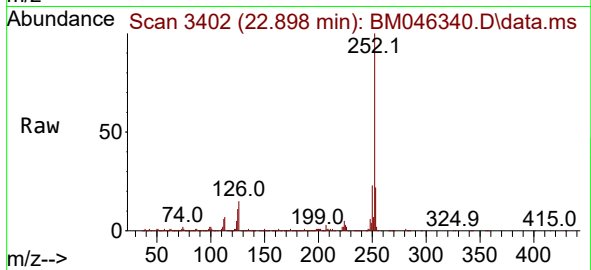




#89
 Benzo(k)fluoranthene
 Concen: 68.237 ng
 RT: 22.898 min Scan# 3402
 Delta R.T. 0.000 min
 Lab File: BM046340.D
 Acq: 27 Jun 2024 20:13

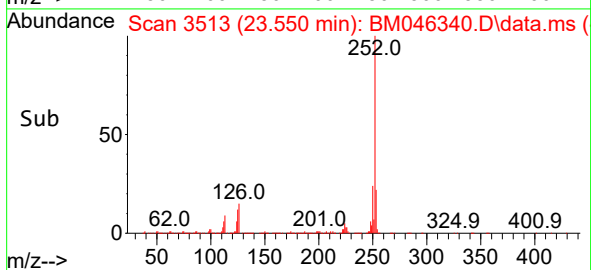
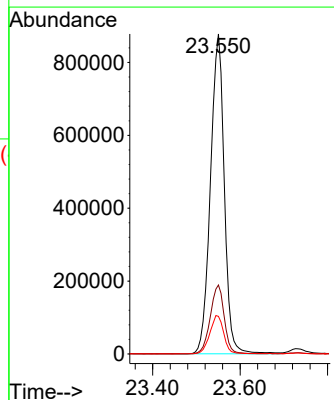
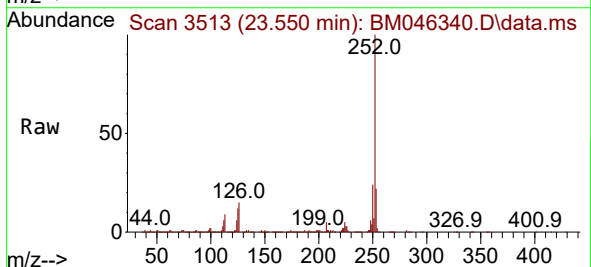
Instrument :
 BNA_M
 ClientSampleId :
 SSTDICC060

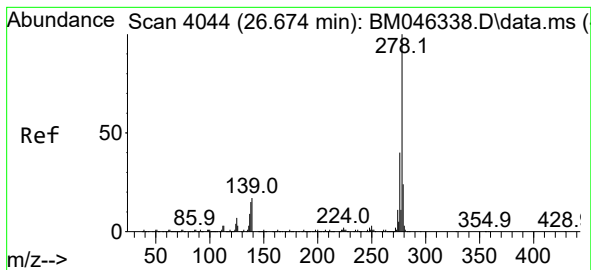
Tgt Ion:252 Resp: 2142375
 Ion Ratio Lower Upper
 252 100
 253 21.9 17.8 26.8
 125 10.6 8.9 13.3



#90
 Benzo(a)pyrene
 Concen: 67.215 ng
 RT: 23.550 min Scan# 3513
 Delta R.T. 0.000 min
 Lab File: BM046340.D
 Acq: 27 Jun 2024 20:13

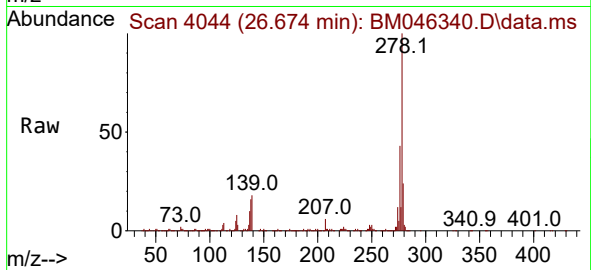
Tgt Ion:252 Resp: 1931920
 Ion Ratio Lower Upper
 252 100
 253 21.5 17.9 26.9
 125 11.8 9.8 14.6



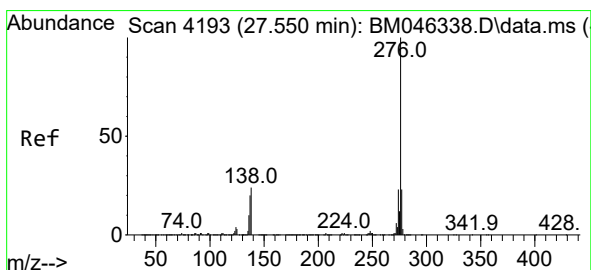
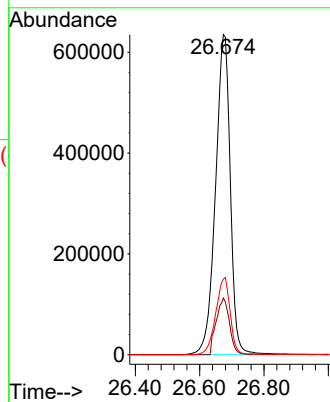
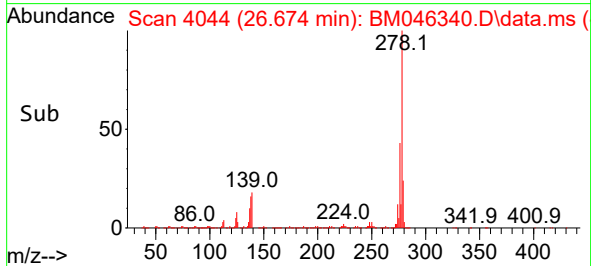


#91
 Dibenzo(a,h)anthracene
 Concen: 72.989 ng
 RT: 26.674 min Scan# 40
 Delta R.T. 0.000 min
 Lab File: BM046340.D
 Acq: 27 Jun 2024 20:13

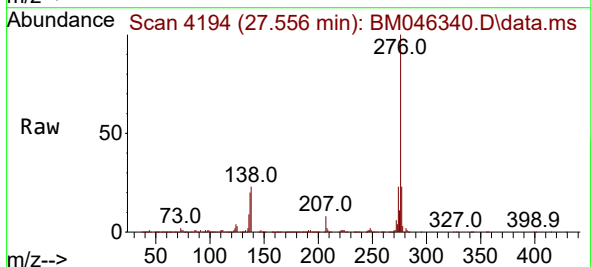
Instrument :
 BNA_M
 ClientSampleId :
 SSTDICC060



Tgt Ion:278 Resp: 2029246
 Ion Ratio Lower Upper
 278 100
 139 17.7 13.7 20.5
 279 23.6 19.3 28.9



#92
 Benzo(g,h,i)perylene
 Concen: 71.077 ng
 RT: 27.556 min Scan# 4194
 Delta R.T. 0.006 min
 Lab File: BM046340.D
 Acq: 27 Jun 2024 20:13



Tgt Ion:276 Resp: 2049897
 Ion Ratio Lower Upper
 276 100
 277 23.4 18.5 27.7
 138 22.6 19.0 28.4

