

Data Path : Z:\SVOASRV\HPCHEM1\BNA M\DATA\BM062819\
 Data File : BM021246.D
 Acq On : 29 Jun 2019 00:08
 Operator : HP/JU
 Sample : K3462-10
 Misc :
 ALS Vial : 24 Sample Multiplier: 1

Instrument :
 BNA_M
 ClientSampleId :

Quant Time: Jun 29 00:49:58 2019
 Quant Method : Z:\SVOASRV\HPCHEM1\BNA_M\METHODS\SOM-EPA-BM061419MA.M
 Quant Title : SVOA CALIBRATION
 QLast Update : Thu Jun 27 05:07:12 2019
 Response via : Initial Calibration

Internal Standards	R.T.	QIon	Response	Conc	Units	Dev(Min)
1) 1,4-Dichlorobenzene-d4	7.76	152	265487	20.00	ng/ul	-0.01
18) Naphthalene-d8	10.55	136	1165926	20.00	ng/ul	0.00
35) Acenaphthene-d10	14.40	164	746270	20.00	ng/ul	0.00
61) Phenanthrene-d10	17.15	188	1671258	20.00	ng/ul	0.00
77) Chrysene-d12	21.33	240	1383603	20.00	ng/ul	0.00
85) Perylene-d12	23.60	264	1498494	20.00	ng/ul	-0.02

System Monitoring Compounds

3) 1,4-Dioxane-d8	3.28	96	38940	6.96	ng/uL	0.00
5) Phenol-d5	6.93	99	162541	7.03	ng/ul	0.00
7) Bis-(2-Chloroethyl)ether-d	7.10	67	374628	27.21	ng/ul	0.00
9) 2-Chlorophenol-d4	7.29	132	445299	23.71	ng/ul	0.00
13) 4-Methylphenol-d8	8.46	113	315091	16.33	ng/ul	0.00
19) Nitrobenzene-d5	8.92	128	282547	29.84	ng/ul	0.00
22) 2-Nitrophenol-d4	9.64	143	320481	30.49	ng/ul	0.00
26) 2,4-Dichlorophenol-d3	10.17	165	629798	29.47	ng/ul	0.00
29) 4-Chloroaniline-d4	10.70	131	15435	0.69	ng/ul	0.00
43) Dimethylphthalate-d6	13.82	166	2216638	32.87	ng/ul	0.00
46) Acenaphthylene-d8	14.09	160	2549602	30.89	ng/ul	0.00
51) 4-Nitrophenol-d4	14.62	143	57691	5.26	ng/ul	0.00
57) Fluorene-d10	15.40	176	1923402	32.79	ng/ul	0.00
62) 4,6-Dinitro-2-methylphenol	15.52	200	273210	26.59	ng/ul	-0.01
70) Anthracene-d10	17.25	188	2894955	33.33	ng/ul	-0.01
78) Pyrene-d10	19.54	212	2998390	36.11	ng/ul	0.00
89) Benzo(a)pyrene-d12	23.46	264	3001433	33.95	ng/ul	-0.01

Target Compounds

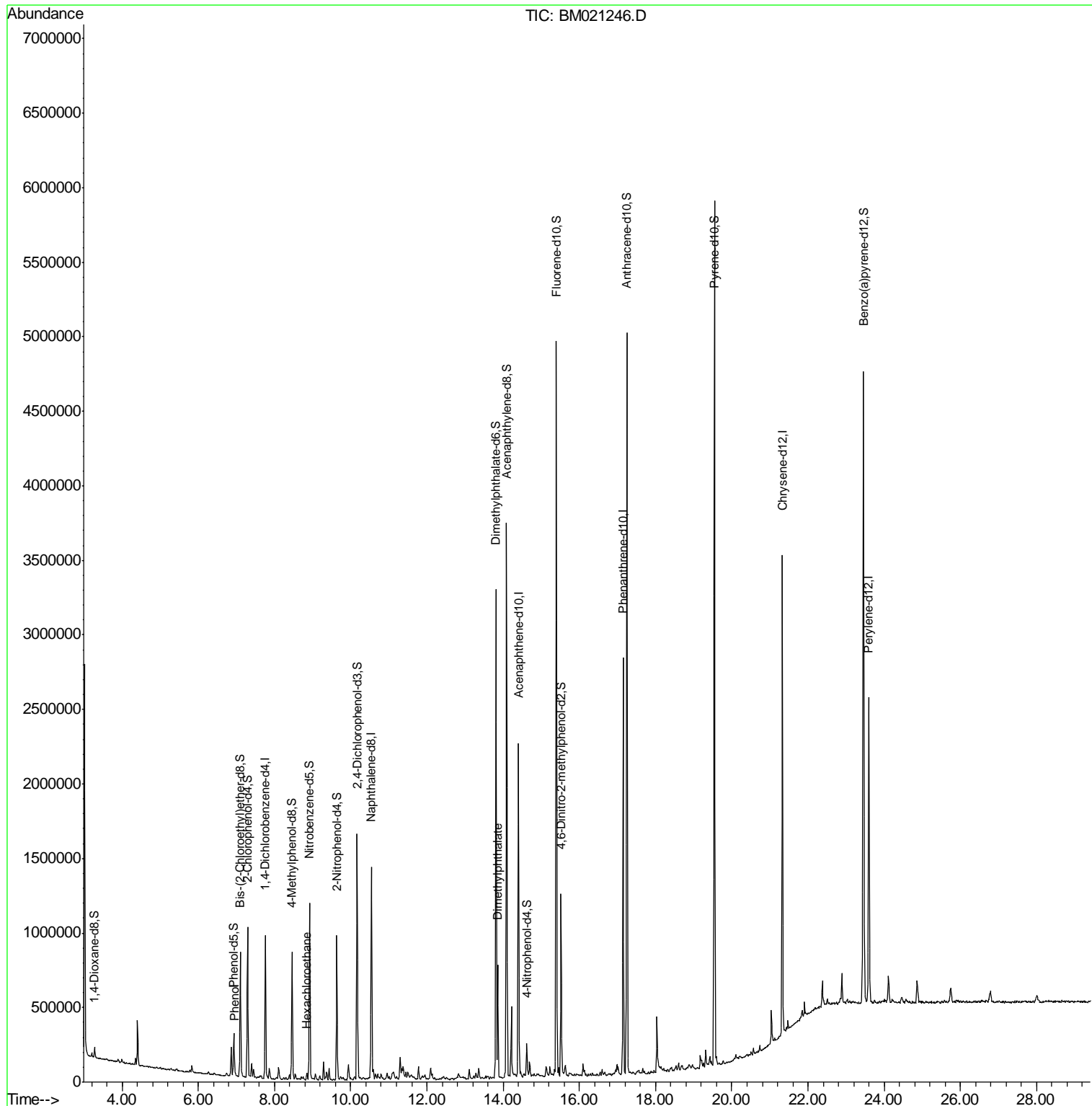
Target Compounds	R.T.	QIon	Response	Conc	Units	Ovalue
6) Phenol	6.96	94	22699	1.039	ng/ul	95
17) Hexachloroethane	8.85	117	7471	1.013	ng/ul#	1
44) Dimethylphthalate	13.86	163	492572	8.025	ng/ul	99

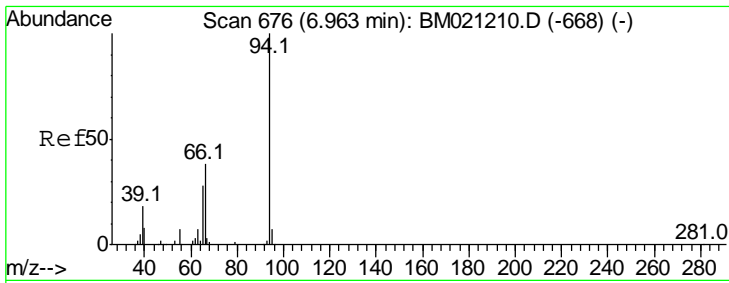
(#) = qualifier out of range (m) = manual integration (+) = signals summed

Data Path : Z:\SVOASRV\HPCHEM1\BNA M\DATA\BM062819\
 Data File : BM021246.D
 Acq On : 29 Jun 2019 00:08
 Operator : HP/JU
 Sample : K3462-10
 Misc :
 ALS Vial : 24 Sample Multiplier: 1

Instrument :
 BNA_M
 ClientSampleId :

Quant Time: Jun 29 00:49:58 2019
 Quant Method : Z:\SVOASRV\HPCHEM1\BNA_M\METHODS\SOM-EPA-BM061419MA.M
 Quant Title : SVOA CALIBRATION
 QLast Update : Thu Jun 27 05:07:12 2019
 Response via : Initial Calibration

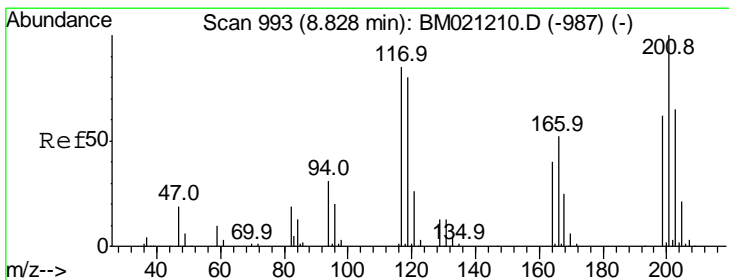
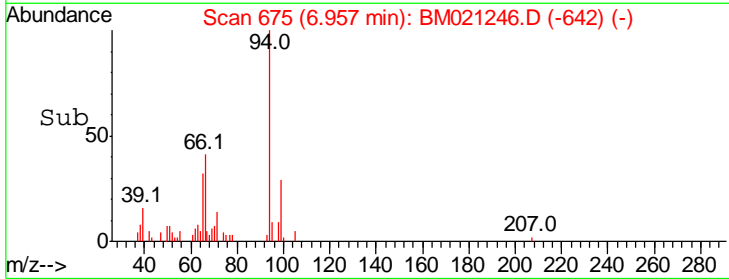
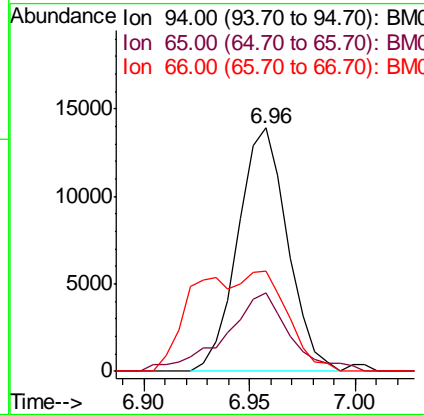
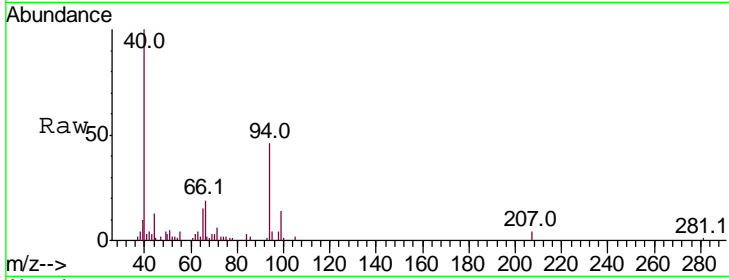




#6
 Phenol
 Concen: 1.039 ng/ul
 RT: 6.96 min Scan# 675
 Delta R.T. -0.01 min
 Lab File: BM021246.D
 Acq: 29 Jun 2019 00:08

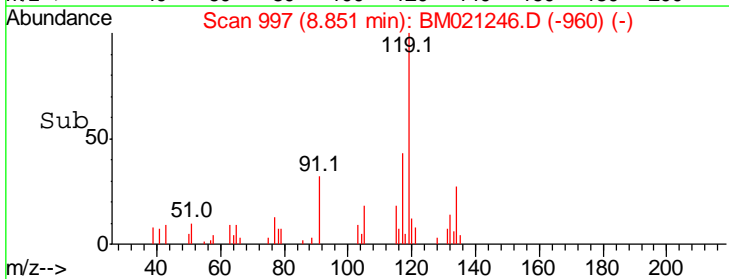
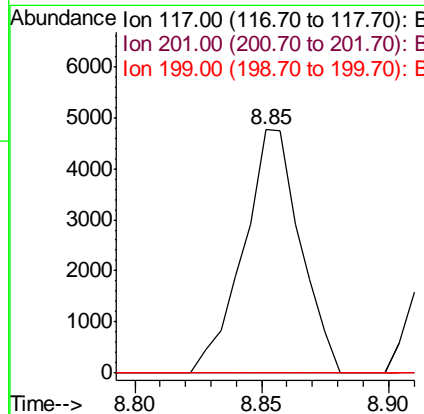
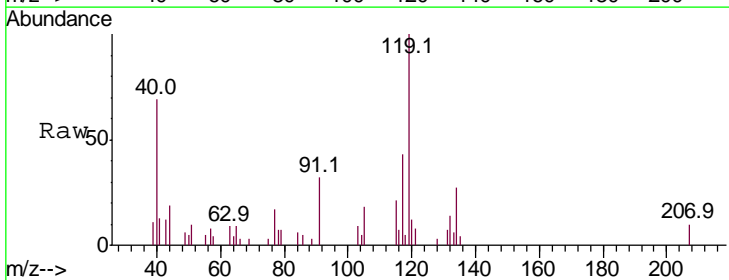
Instrument :
 BNA_M
 ClientSampled :

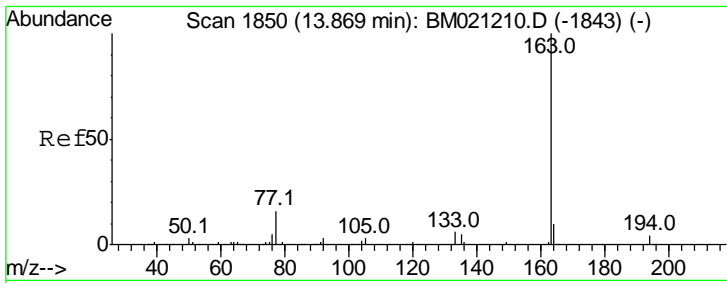
Tgt Ion	Resp	Lower	Upper
94	100		
65	32.3	22.6	34.0
66	41.0	31.2	46.8



#17
 Hexachloroethane
 Concen: 1.013 ng/ul
 RT: 8.85 min Scan# 997
 Delta R.T. 0.02 min
 Lab File: BM021246.D
 Acq: 29 Jun 2019 00:08

Tgt Ion	Resp	Lower	Upper
117	100		
201	0.0	93.9	140.9#
199	0.0	57.8	86.8#





#44
 Dimethylphthalate
 Concen: 8.025 ng/ul
 RT: 13.86 min Scan# 1849
 Delta R.T. -0.01 min
 Lab File: BM021246.D
 Acq: 29 Jun 2019 00:08

Instrument :
 BNA_M
 ClientSampled :

Tot Ion:163 Resp: 492572

Ion	Ratio	Lower	Upper
163	100		
194	4.1	3.4	5.2
164	10.0	7.7	11.5

