

Data Path : Z:\HPCHEM1\BNA\_M\DATA\BM062916\  
 Data File : BM006137.D  
 Acq On : 29 Jun 2016 22:15  
 Operator : UM/SJ  
 Sample : H3779-08  
 Misc :  
 ALS Vial : 21 Sample Multiplier: 1

Instrument :  
 BNA\_M  
 ClientSampleId :  
 D9YD7

Quant Time: Jun 30 03:59:41 2016  
 Quant Method : Z:\HPCHEM1\BNA\_M\METHODS\SOM02.2-EPA-BM062816.M  
 Quant Title : SVOA CALIBRATION  
 QLast Update : Wed Jun 29 00:57:09 2016  
 Response via : Initial Calibration

Internal Standards	R.T.	QIon	Response	Conc	Units	Dev(Min)
1) 1,4-Dichlorobenzene-d4	7.65	152	232765	20.00	ng/ul	0.00
7) Naphthalene-d8	10.43	136	1110376	20.00	ng/ul	0.00
15) Acenaphthene-d10	14.30	164	676973	20.00	ng/ul	0.00
23) Phenanthrene-d10	17.05	188	1588623	20.00	ng/ul	0.00
29) Chrysene-d12	21.24	240	1639496	20.00	ng/ul	0.00
34) Perylene-d12	23.46	264	1302903	20.00	ng/ul	0.00

## System Monitoring Compounds

2) 1,4-Dioxane-d8	3.17	96	7850	1.57	ng/uL	0.00
3) Phenol-d5	6.82	99	428510	22.53	ng/ul	0.00
4) Bis-(2-Chloroethyl)ether-d	6.99	67	262828	23.44	ng/ul	0.00
5) 2-Chlorophenol-d4	7.18	132	324654	22.24	ng/ul	0.00
6) 4-Methylphenol-d8	8.35	113	356026	23.26	ng/ul	-0.01
8) Nitrobenzene-d5	8.80	128	168391	22.52	ng/ul	0.00
9) 2-Nitrophenol-d4	9.52	143	189318	22.12	ng/ul	0.00
10) 2,4-Dichlorophenol-d3	10.05	165	342586	21.94	ng/ul	0.00
12) 4-Chloroaniline-d4	10.57	131	420094	34.03	ng/ul	0.00
16) Dimethylphthalate-d6	13.71	166	1119374	23.07	ng/ul	0.00
17) Acenaphthylene-d8	13.99	160	1387993	23.57	ng/ul	0.00
20) 4-Nitrophenol-d4	14.50	143	209959	22.80	ng/ul	0.00
21) Fluorene-d10	15.30	176	977809	23.61	ng/ul	0.00
24) 4,6-Dinitro-2-methylphenol	15.42	200	168136	29.88	ng/ul	0.00
26) Anthracene-d10	17.14	188	1501985	23.57	ng/ul	0.00
30) Pyrene-d10	19.45	212	1762020	26.69	ng/ul	0.00
37) Benzo(a)pyrene-d12	23.31	264	1270422	24.50	ng/ul	0.00

## Target Compounds

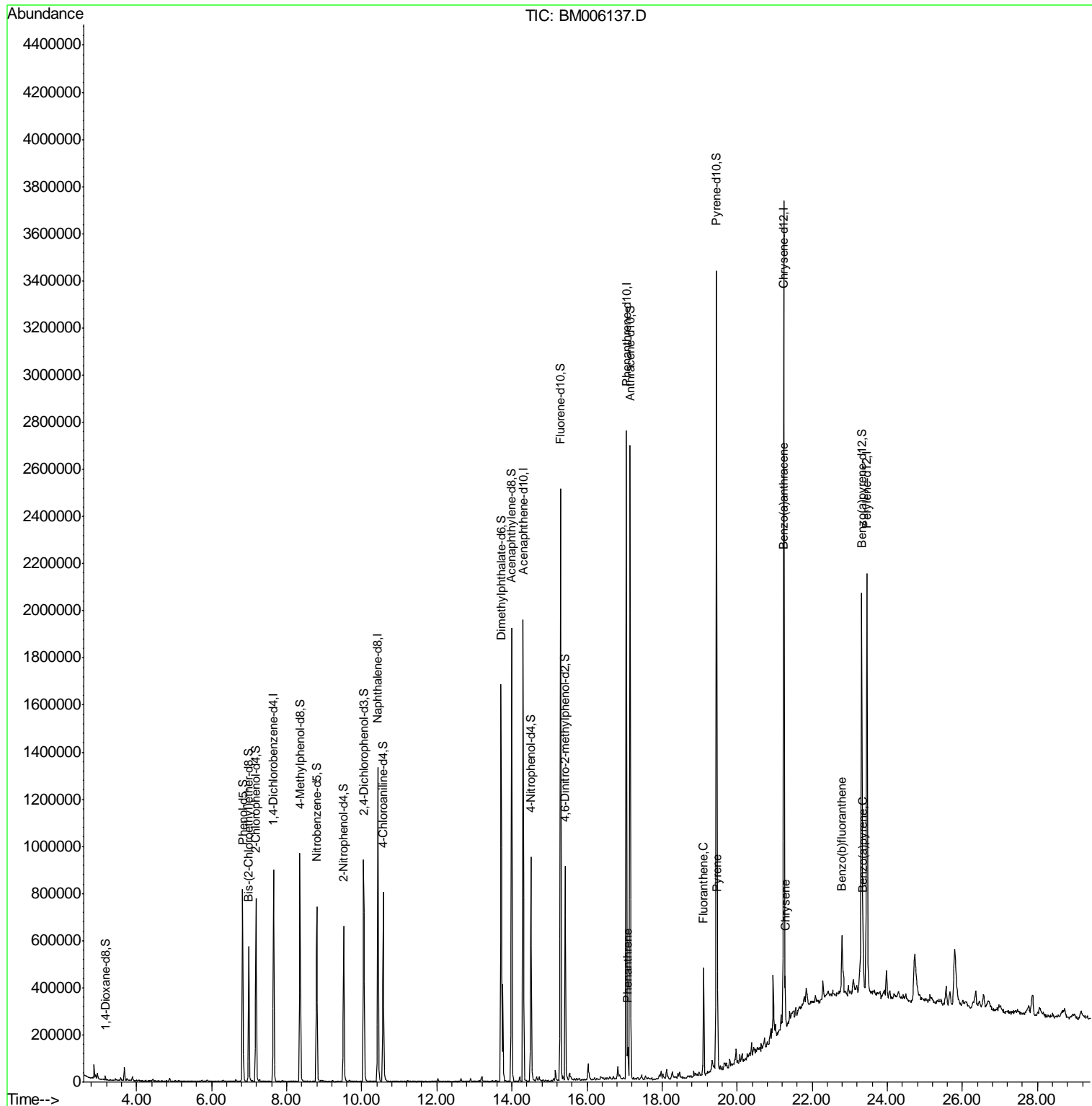
Target Compounds	R.T.	QIon	Response	Conc	Units	Qvalue
25) Phenanthrene	17.09	178	76727	1.02	ng/ul	99
28) Fluoranthene	19.11	202	263940	2.87	ng/ul	99
31) Pyrene	19.47	202	208215	2.41	ng/ul	97
32) Benzo(a)anthracene	21.23	228	120634	1.42	ng/ul	99
33) Chrysene	21.28	228	121300	1.55	ng/ul	97
35) Benzo(b)fluoranthene	22.80	252	159513	2.36	ng/ul	97
38) Benzo(a)pyrene	23.36	252	86679	1.36	ng/ul#	91

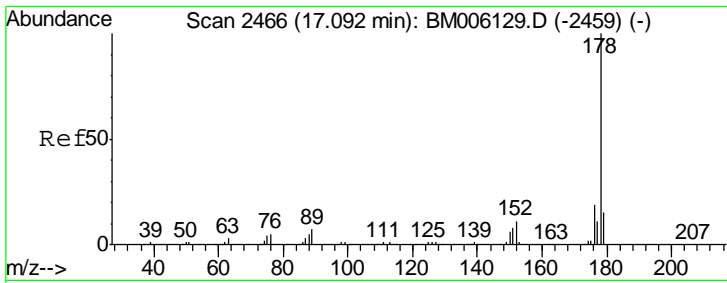
(#) = qualifier out of range (m) = manual integration (+) = signals summed

Data Path : Z:\HPCHEM1\BNA\_M\DATA\BM062916\  
 Data File : BM006137.D  
 Acq On : 29 Jun 2016 22:15  
 Operator : UM/SJ  
 Sample : H3779-08  
 Misc :  
 ALS Vial : 21 Sample Multiplier: 1

Instrument :  
 BNA\_M  
 ClientSampled :  
 D9YD7

Quant Time: Jun 30 03:59:41 2016  
 Quant Method : Z:\HPCHEM1\BNA\_M\METHODS\SOM02.2-EPA-BM062816.M  
 Quant Title : SVOA CALIBRATION  
 QLast Update : Wed Jun 29 00:57:09 2016  
 Response via : Initial Calibration

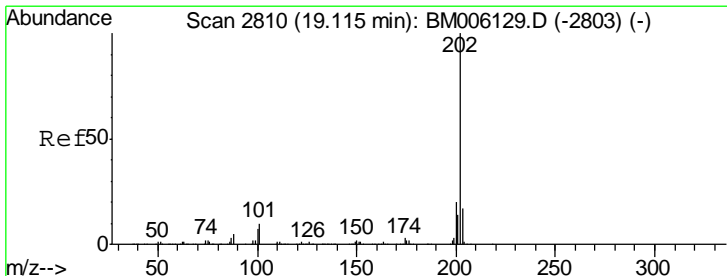
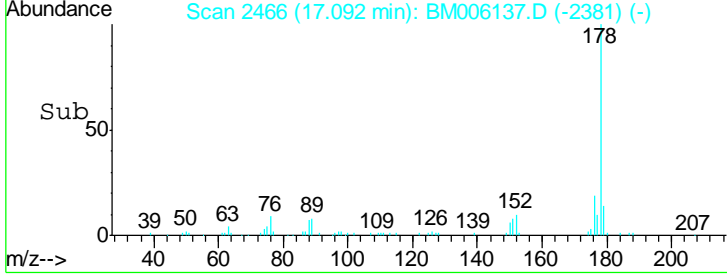
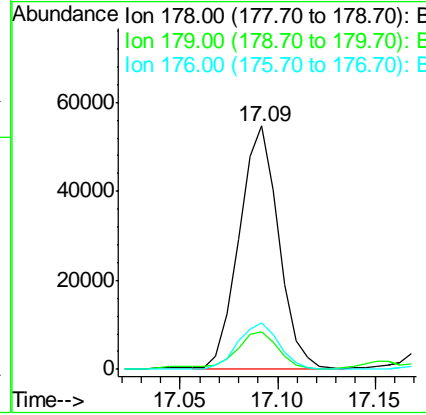
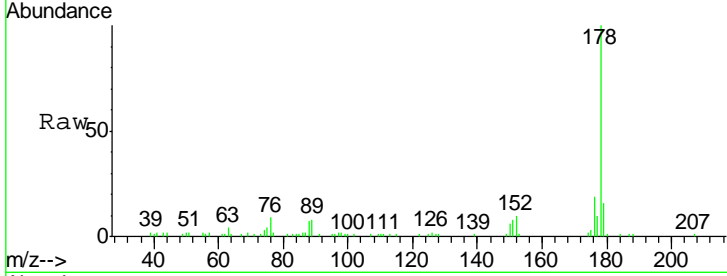




#25  
 Phenanthrene  
 Concen: 1.02 ng/ul  
 RT: 17.09 min Scan# 2466  
 Delta R.T. 0.00 min  
 Lab File: BM006137.D  
 Acq: 29 Jun 2016 22:15

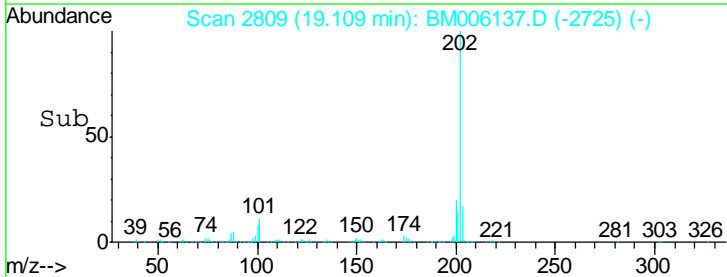
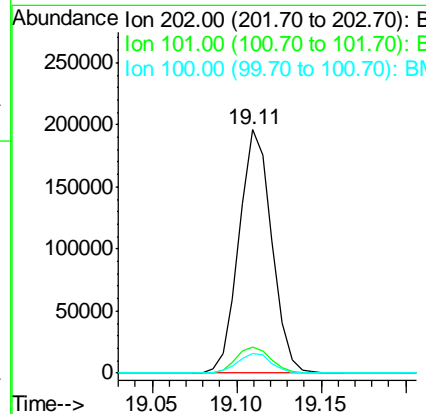
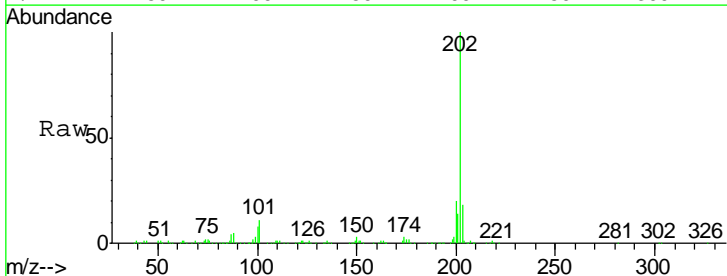
Instrument :  
 BNA\_M  
 ClientSampled :  
 D9YD7

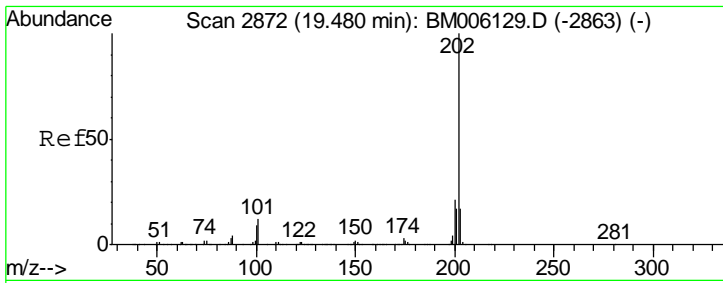
Tgt Ion	Resp	Lower	Upper
178	100		
179	15.6	12.2	18.2
176	18.9	15.3	22.9



#28  
 Fluoranthene  
 Concen: 2.87 ng/ul  
 RT: 19.11 min Scan# 2809  
 Delta R.T. -0.01 min  
 Lab File: BM006137.D  
 Acq: 29 Jun 2016 22:15

Tgt Ion	Resp	Lower	Upper
202	100		
101	10.9	8.5	12.7
100	8.0	6.5	9.7

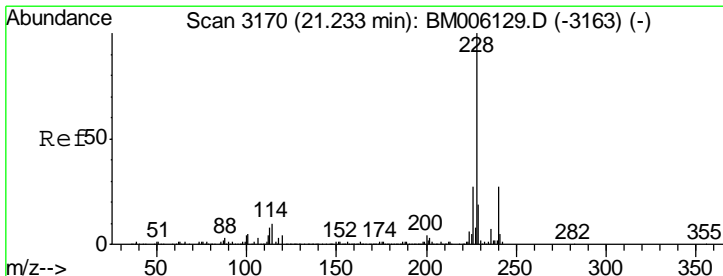
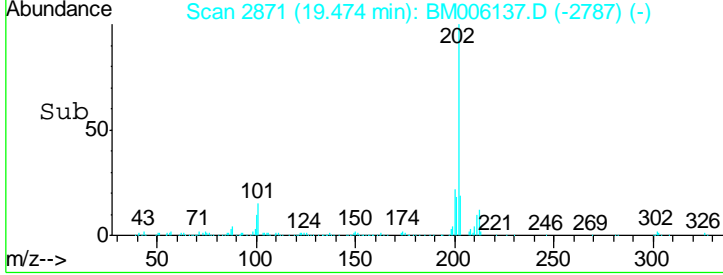
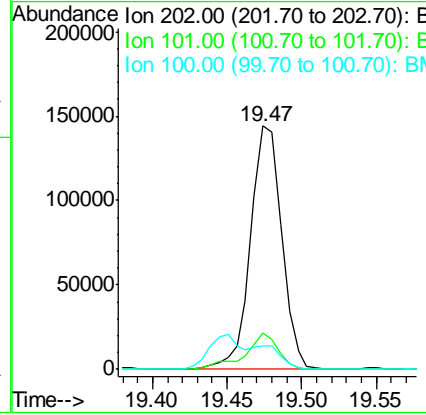
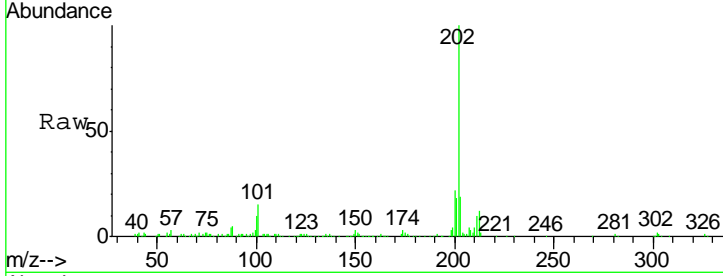




#31  
 Pyrene  
 Concen: 2.41 ng/ul  
 RT: 19.47 min Scan# 2871  
 Delta R.T. -0.01 min  
 Lab File: BM006137.D  
 Acq: 29 Jun 2016 22:15

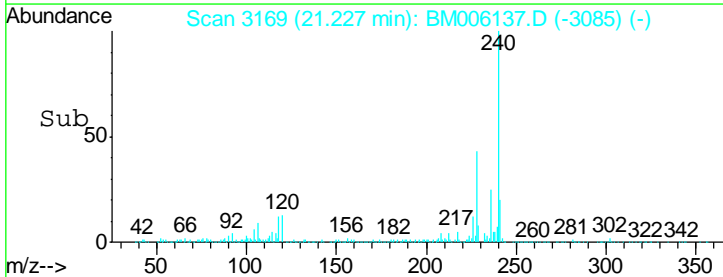
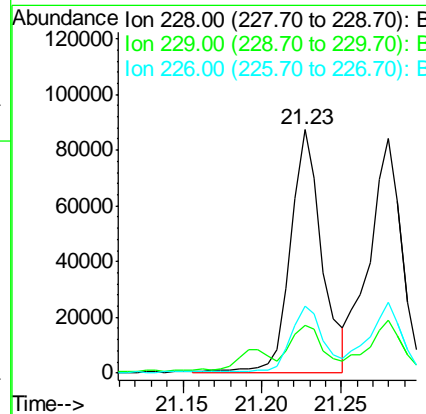
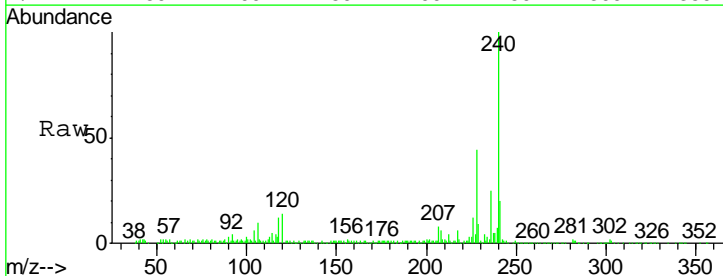
Instrument :  
 BNA\_M  
 ClientSampled :  
 D9YD7

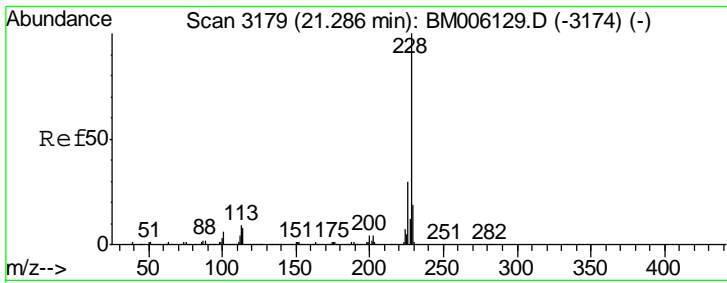
Tgt Ion	Resp	Lower	Upper
202	100		
101	14.7	11.0	16.4
100	9.8	8.9	13.3



#32  
 Benzo(a)anthracene  
 Concen: 1.42 ng/ul  
 RT: 21.23 min Scan# 3169  
 Delta R.T. -0.01 min  
 Lab File: BM006137.D  
 Acq: 29 Jun 2016 22:15

Tgt Ion	Resp	Lower	Upper
228	100		
229	19.8	15.6	23.4
226	27.3	21.6	32.4

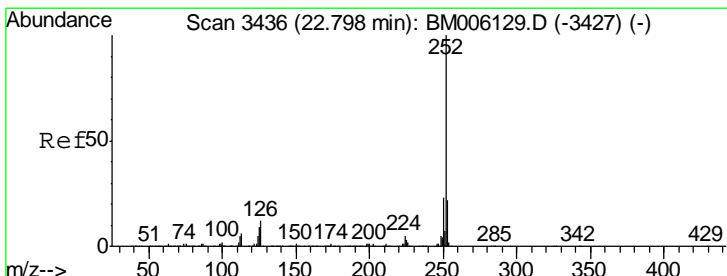
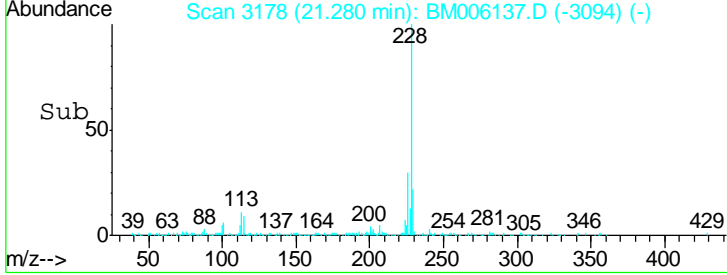
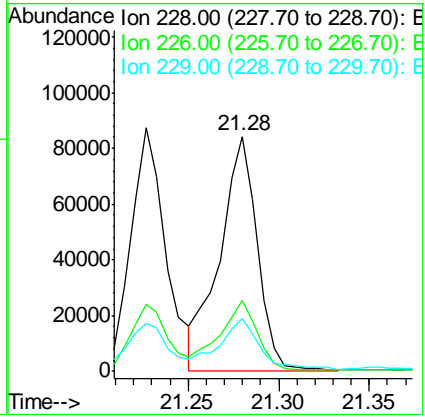
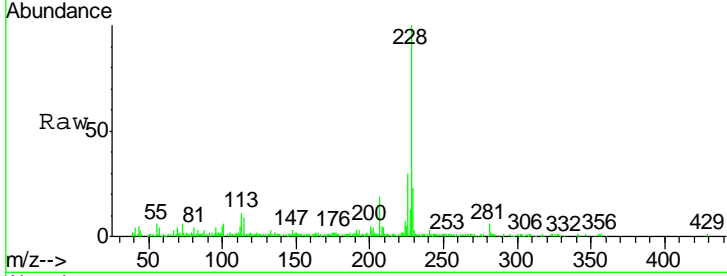




#33  
 Chrysene  
 Concen: 1.55 ng/ul  
 RT: 21.28 min Scan# 3178  
 Delta R.T. -0.01 min  
 Lab File: BM006137.D  
 Acq: 29 Jun 2016 22:15

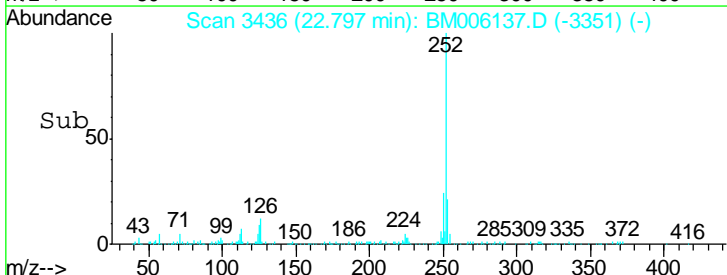
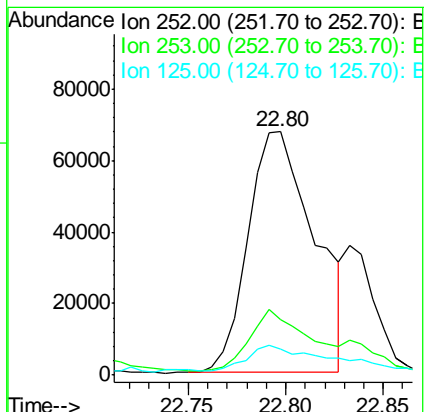
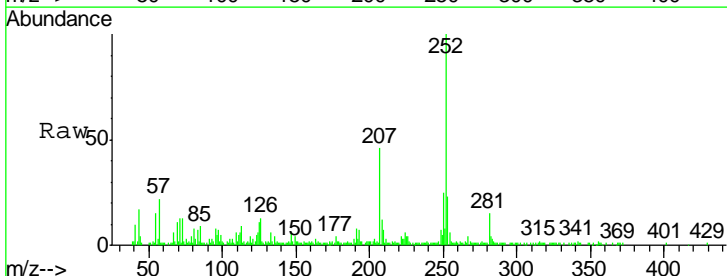
Instrument :  
 BNA\_M  
 ClientSampled :  
 D9YD7

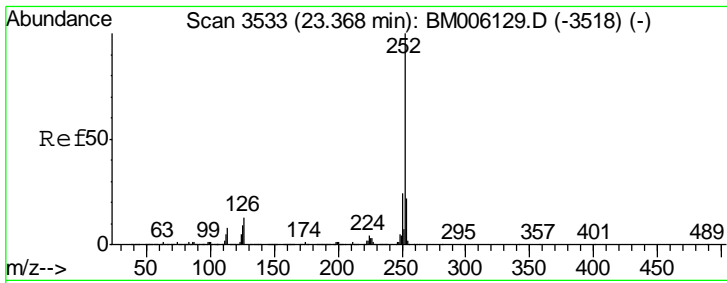
Tgt Ion	Resp	Lower	Upper
228	121300		
226	30.3	23.8	35.6
229	22.7	15.8	23.6



#35  
 Benzo(b)fluoranthene  
 Concen: 2.36 ng/ul  
 RT: 22.80 min Scan# 3436  
 Delta R.T. 0.00 min  
 Lab File: BM006137.D  
 Acq: 29 Jun 2016 22:15

Tgt Ion	Resp	Lower	Upper
252	159513		
253	22.5	17.2	25.8
125	10.9	7.8	11.6





#38  
 Benzo(a)pyrene  
 Concen: 1.36 ng/ul  
 RT: 23.36 min Scan# 3531  
 Delta R.T. -0.01 min  
 Lab File: BM006137.D  
 Acq: 29 Jun 2016 22:15

Instrument :  
 BNA\_M  
 ClientSampleId :  
 D9YD7

Tgt Ion	Resp	Lower	Upper
252	100		
253	28.0	17.8	26.6#
125	11.6	8.7	13.1

