

Data Path : Z:\HPCHEM1\BNA M\DATA\BM063016\  
 Data File : BM006160.D  
 Acq On : 30 Jun 2016 14:58  
 Operator : UM/SJ  
 Sample : H3779-03  
 Misc :  
 ALS Vial : 10 Sample Multiplier: 1

Instrument :  
 BNA\_M  
 ClientSampled :  
 D9YD4

Manual Integrations  
 APPROVED

sohil  
 7/1/2016 7:15:20 PM

Quant Time: Jun 30 16:48:54 2016  
 Quant Method : Z:\HPCHEM1\BNA M\METHODS\SOM02.2-EPA-BM062816.M  
 Quant Title : SVOA CALIBRATION  
 QLast Update : Wed Jun 29 00:57:09 2016  
 Response via : Initial Calibration

Internal Standards	R.T.	QIon	Response	Conc	Units	Dev(Min)
1) 1,4-Dichlorobenzene-d4	7.65	152	281120	20.00	ng/ul	0.00
7) Naphthalene-d8	10.43	136	1312405	20.00	ng/ul	0.00
15) Acenaphthene-d10	14.30	164	733302	20.00	ng/ul	0.00
23) Phenanthrene-d10	17.06	188	1447445	20.00	ng/ul	0.00
29) Chrysene-d12	21.25	240	996425	20.00	ng/ul	0.00
34) Perylene-d12	23.47	264	1123831	20.00	ng/ul	0.01

## System Monitoring Compounds

2) 1,4-Dioxane-d8	3.17	96	7286	1.20	ng/uL	0.00
3) Phenol-d5	6.83	99	398782	17.36	ng/ul	0.00
4) Bis-(2-Chloroethyl)ether-d	6.99	67	244367	18.05	ng/ul	0.00
5) 2-Chlorophenol-d4	7.19	132	306053	17.36	ng/ul	0.00
6) 4-Methylphenol-d8	8.36	113	325209	17.59	ng/ul	0.00
8) Nitrobenzene-d5	8.80	128	154837	17.52	ng/ul	0.00
9) 2-Nitrophenol-d4	9.52	143	170905	16.89	ng/ul	0.00
10) 2,4-Dichlorophenol-d3	10.06	165	313927	17.01	ng/ul	0.00
12) 4-Chloroaniline-d4	10.57	131	310723	21.30	ng/ul	0.00
16) Dimethylphthalate-d6	13.72	166	932606	17.74	ng/ul	0.00
17) Acenaphthylene-d8	13.99	160	1181501	18.52	ng/ul	0.00
20) 4-Nitrophenol-d4	14.52	143	124552	12.49	ng/ul	0.00
21) Fluorene-d10	15.30	176	792395	17.67	ng/ul	0.00
24) 4,6-Dinitro-2-methylphenol	15.43	200	65363	12.75	ng/ul	0.00
26) Anthracene-d10	17.15	188	1085689	18.70	ng/ul	0.00
30) Pyrene-d10	19.46	212	900019	22.43	ng/ul	0.00
37) Benzo(a)pyrene-d12	23.33	264	826743	18.49	ng/ul	0.01

## Target Compounds

Target Compounds	R.T.	QIon	Response	Conc	Units	Ovalue
11) Naphthalene	10.49	128	120523	2.10	ng/ul	99
18) Acenaphthylene	14.03	152	148747	2.23	ng/ul	98
22) Fluorene	15.36	166	49730	1.03	ng/ul	98
25) Phenanthrene	17.10	178	979185	14.30	ng/ul	100
27) Anthracene	17.19	178	293235	4.16	ng/ul	98
28) Fluoranthene	19.12	202	2382457	28.40	ng/ul	98
31) Pyrene	19.49	202	1902006	36.19	ng/ul	96
32) Benzo(a)anthracene	21.24	228	1150978	22.21	ng/ul	96
33) Chrysene	21.29	228	1151315	24.13	ng/ul	98
35) Benzo(b)fluoranthene	22.81	252	1943934	33.33	ng/ul	98
36) Benzo(k)fluoranthene	22.85	252	649481m	11.87	ng/ul	
38) Benzo(a)pyrene	23.38	252	1303475	23.65	ng/ul	99
39) Indeno(1,2,3-cd)pyrene	25.70	276	1091031	19.05	ng/ul#	93
40) Dibenzo(a,h)anthracene	25.70	278	315918m	6.67	ng/ul	
41) Benzo(g,h,i)perylene	26.39	276	948630	19.79	ng/ul	97

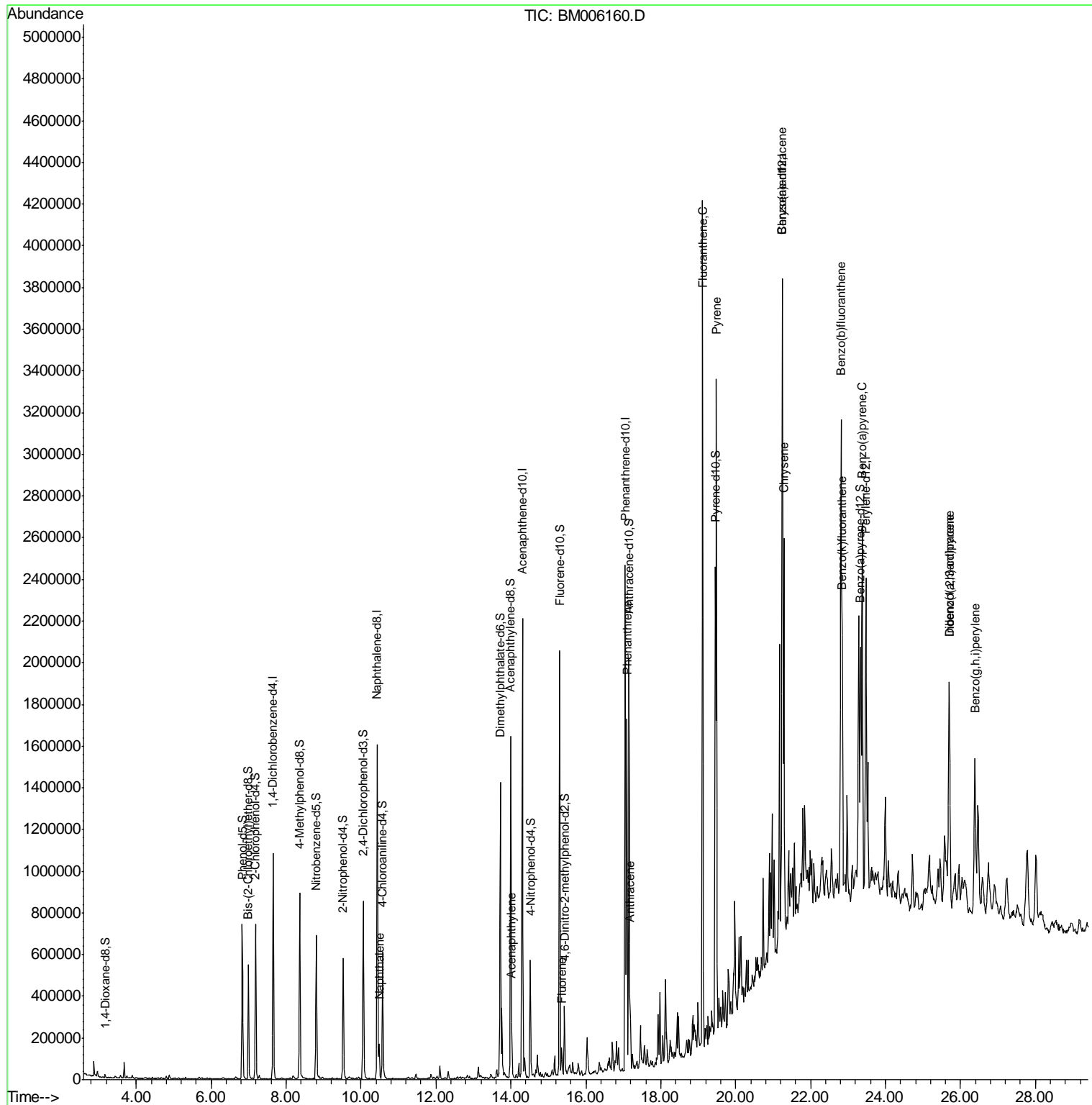
(#) = qualifier out of range (m) = manual integration (+) = signals summed

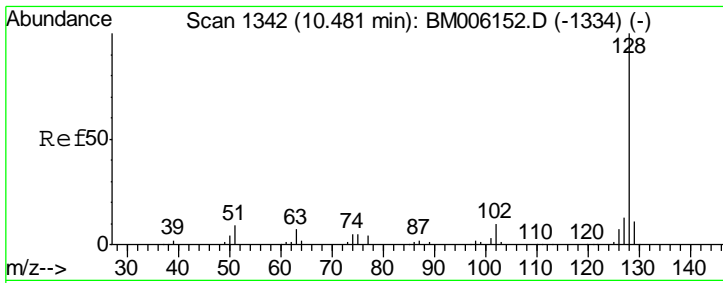
Data Path : Z:\HPCHEM1\BNA M\DATA\BM063016\  
 Data File : BM006160.D  
 Acq On : 30 Jun 2016 14:58  
 Operator : UM/SJ  
 Sample : H3779-03  
 Misc :  
 ALS Vial : 10 Sample Multiplier: 1

Instrument :  
 BNA\_M  
 Client Sampled :  
 D9YD4

Manual Integrations  
 APPROVED  
 sohil  
 7/1/2016 7:15:20 PM

Quant Time: Jun 30 16:48:54 2016  
 Quant Method : Z:\HPCHEM1\BNA M\METHODS\SOM02.2-EPA-BM062816.M  
 Quant Title : SVOA CALIBRATION  
 QLast Update : Wed Jun 29 00:57:09 2016  
 Response via : Initial Calibration



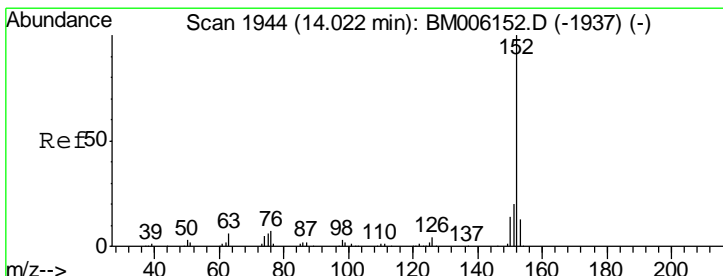
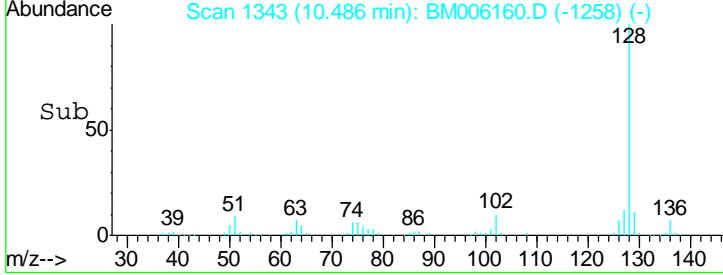
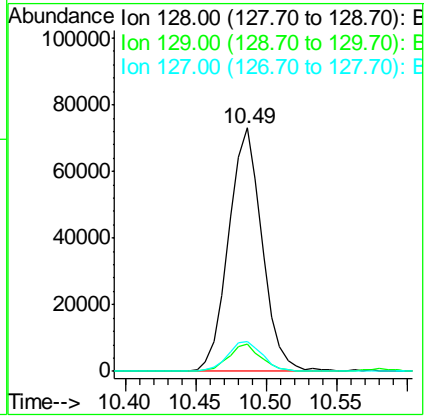
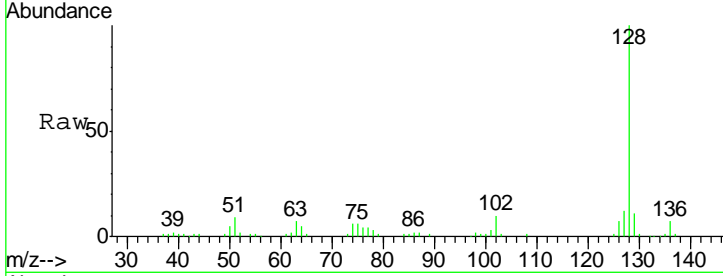


#11  
 Naphthalene  
 Concen: 2.10 ng/ul  
 RT: 10.49 min Scan# 1343  
 Delta R.T. -0.00 min  
 Lab File: BM006160.D  
 Acq: 30 Jun 2016 14:58

Instrument :  
 BNA\_M  
 ClientSampled :  
 D9YD4

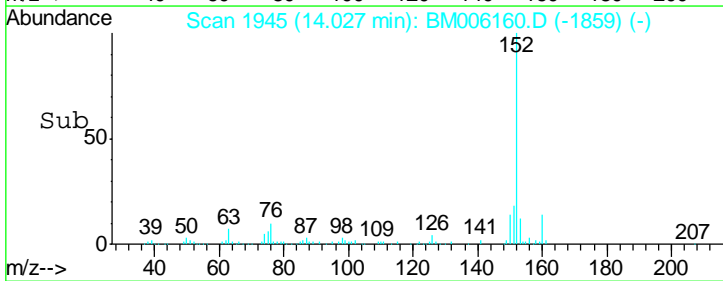
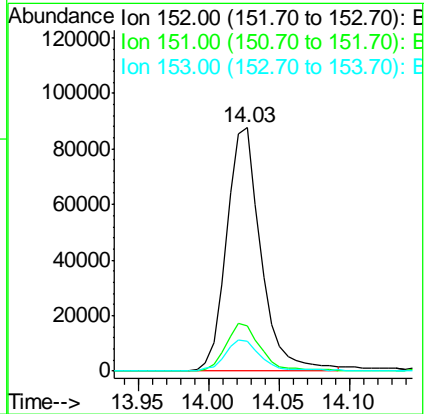
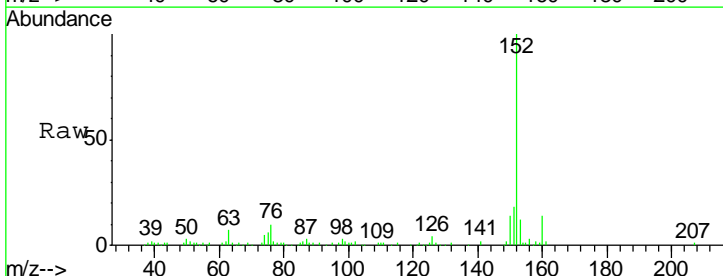
Tgt Ion	Resp	Lower	Upper
128	120523		
129	11.0	8.9	13.3
127	12.2	10.5	15.7

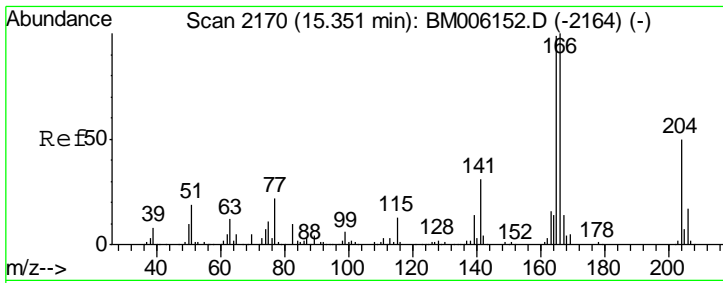
Manual Integrations  
 APPROVED  
 sohil  
 7/1/2016 7:15:20 PM



#18  
 Acenaphthylene  
 Concen: 2.23 ng/ul  
 RT: 14.03 min Scan# 1945  
 Delta R.T. 0.01 min  
 Lab File: BM006160.D  
 Acq: 30 Jun 2016 14:58

Tgt Ion	Resp	Lower	Upper
152	148747		
151	18.5	15.8	23.6
153	12.5	10.3	15.5



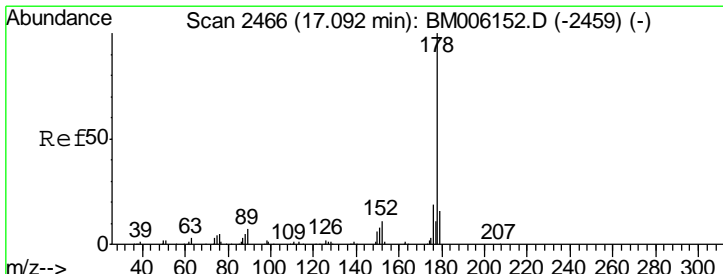
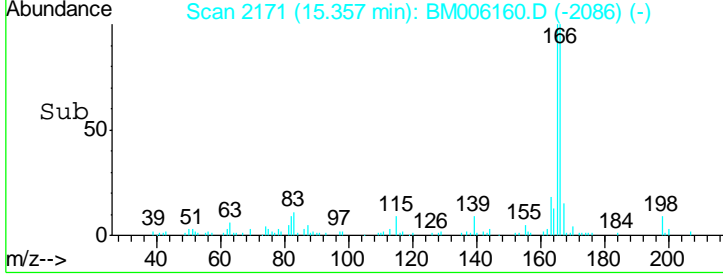
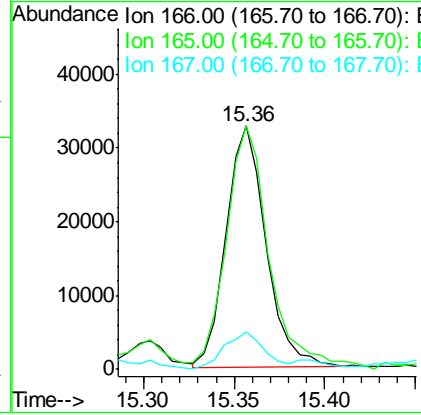
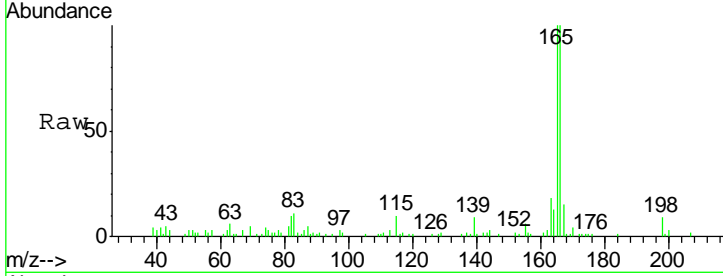


#22  
 Fluorene  
 Concen: 1.03 ng/ul  
 RT: 15.36 min Scan# 2171  
 Delta R.T. -0.00 min  
 Lab File: BM006160.D  
 Acq: 30 Jun 2016 14:58

Instrument :  
 BNA\_M  
 ClientSampled :  
 D9YD4

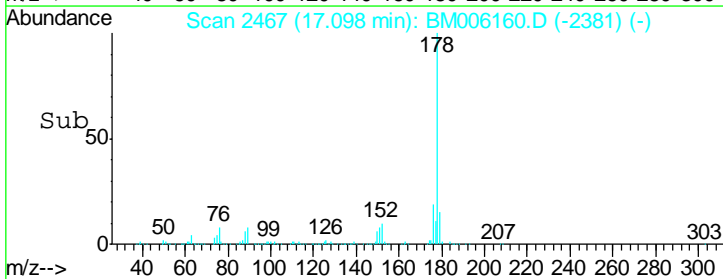
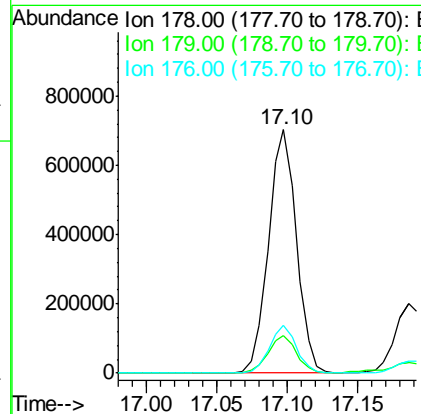
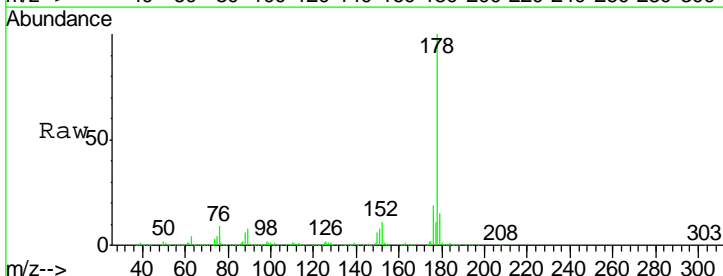
Tgt Ion	Resp	Lower	Upper
166	49730		
165	100.0	78.4	117.6
167	15.4	10.6	16.0

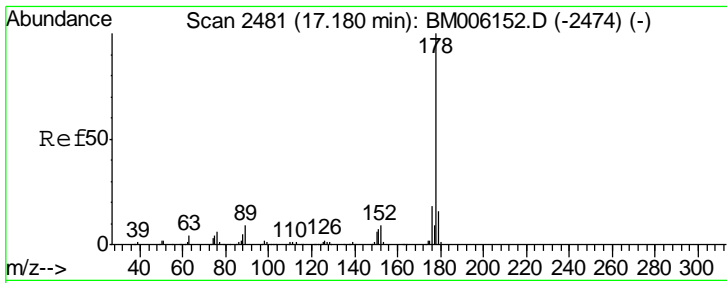
Manual Integrations  
 APPROVED  
 sohil  
 7/1/2016 7:15:20 PM



#25  
 Phenanthrene  
 Concen: 14.30 ng/ul  
 RT: 17.10 min Scan# 2467  
 Delta R.T. 0.01 min  
 Lab File: BM006160.D  
 Acq: 30 Jun 2016 14:58

Tgt Ion	Resp	Lower	Upper
178	979185		
179	15.2	12.2	18.2
176	19.4	15.3	22.9



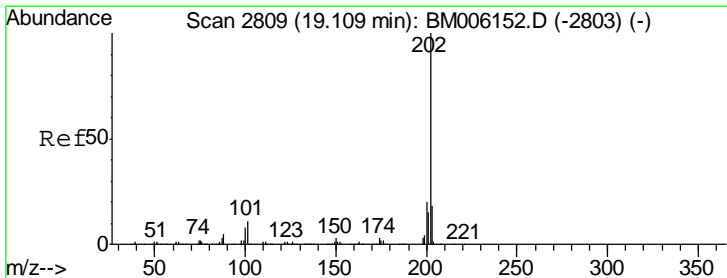
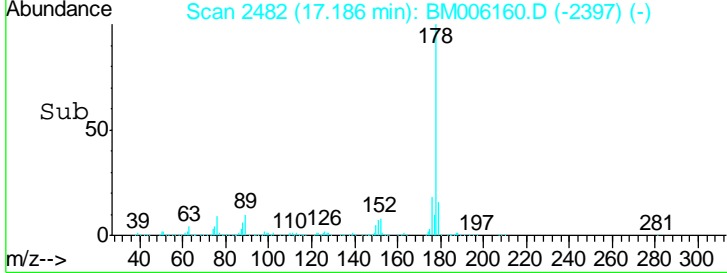
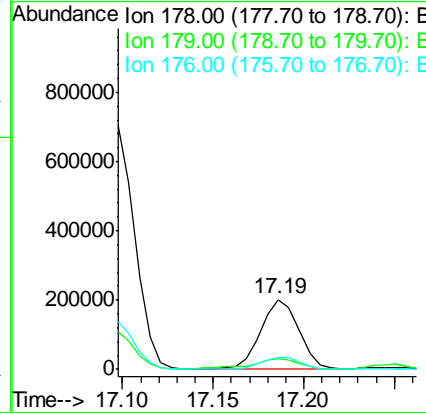
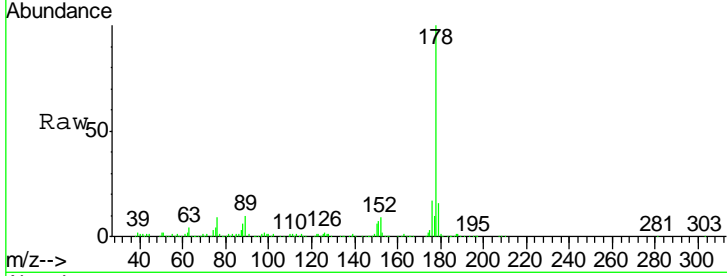


#27  
 Anthracene  
 Concen: 4.16 ng/ul  
 RT: 17.19 min Scan# 2482  
 Delta R.T. -0.00 min  
 Lab File: BM006160.D  
 Acq: 30 Jun 2016 14:58

Instrument :  
 BNA\_M  
 ClientSampled :  
 D9YD4

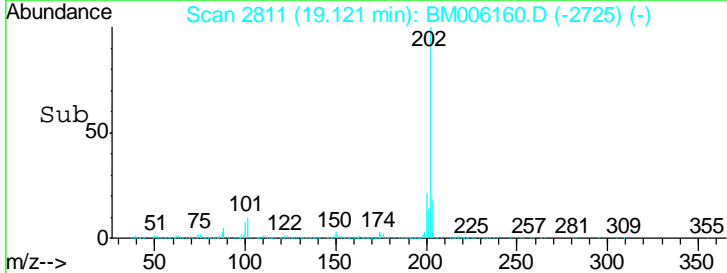
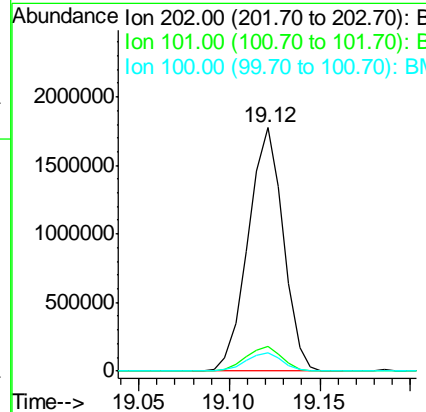
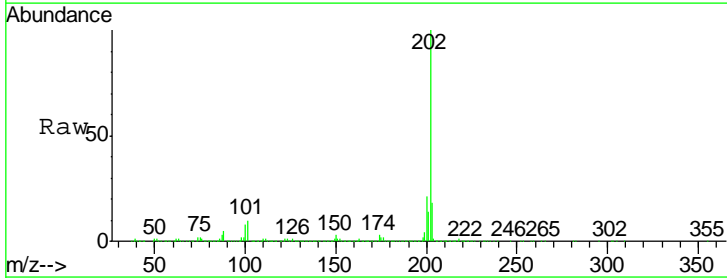
Tgt Ion	Resp	Lower	Upper
178	100		
179	15.9	12.3	18.5
176	17.5	14.6	22.0

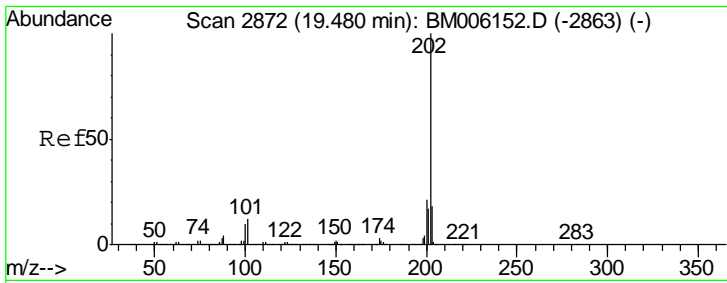
Manual Integrations  
 APPROVED  
 sohil  
 7/1/2016 7:15:20 PM



#28  
 Fluoranthene  
 Concen: 28.40 ng/ul  
 RT: 19.12 min Scan# 2811  
 Delta R.T. 0.01 min  
 Lab File: BM006160.D  
 Acq: 30 Jun 2016 14:58

Tgt Ion	Resp	Lower	Upper
202	100		
101	10.0	8.5	12.7
100	7.5	6.5	9.7



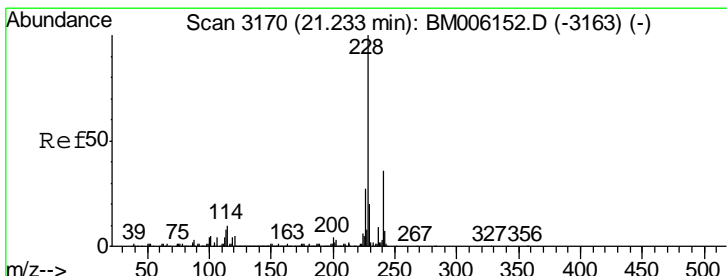
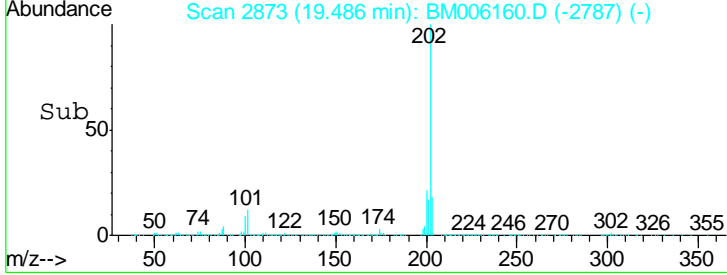
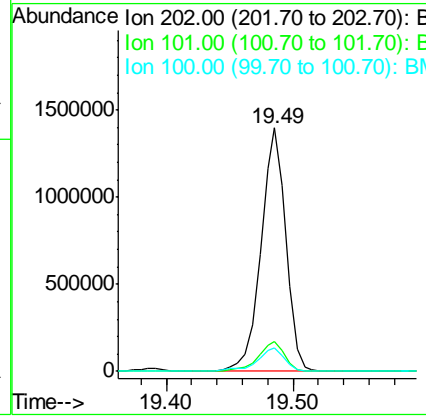
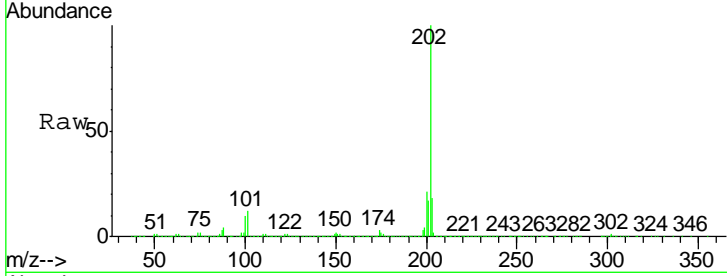


#31  
 Pyrene  
 Concen: 36.19 ng/ul  
 RT: 19.49 min Scan# 2873  
 Delta R.T. 0.01 min  
 Lab File: BM006160.D  
 Acq: 30 Jun 2016 14:58

Instrument : BNA\_M  
 ClientSampled : D9YD4

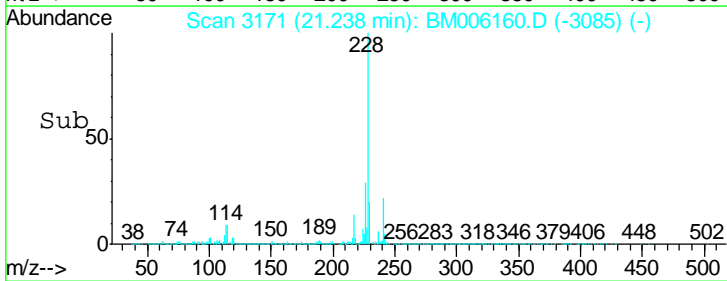
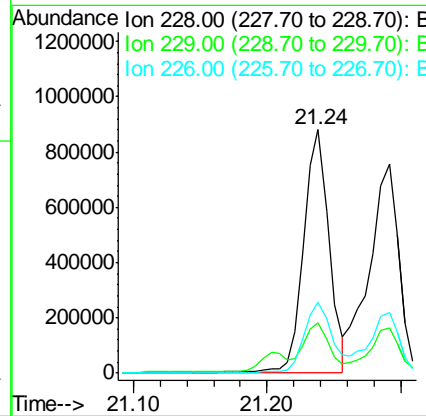
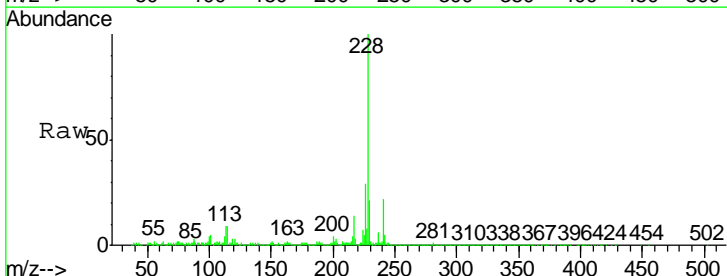
Tgt Ion:	202	Resp:	1902006
Ion Ratio	Lower	Upper	
202	100		
101	12.0	11.0	16.4
100	9.5	8.9	13.3

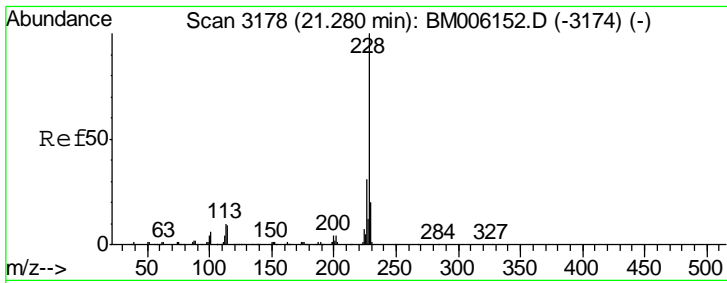
Manual Integrations  
 APPROVED  
 sohil  
 7/1/2016 7:15:20 PM



#32  
 Benzo(a)anthracene  
 Concen: 22.21 ng/ul  
 RT: 21.24 min Scan# 3171  
 Delta R.T. 0.01 min  
 Lab File: BM006160.D  
 Acq: 30 Jun 2016 14:58

Tgt Ion:	228	Resp:	1150978
Ion Ratio	Lower	Upper	
228	100		
229	20.9	15.6	23.4
226	29.1	21.6	32.4





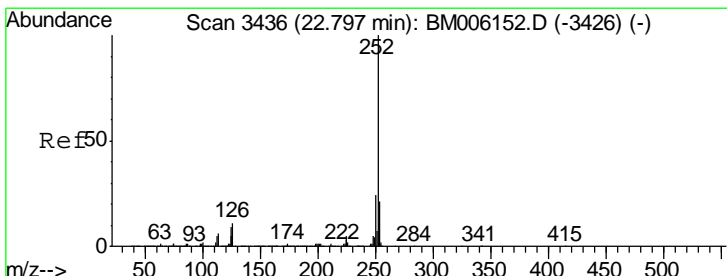
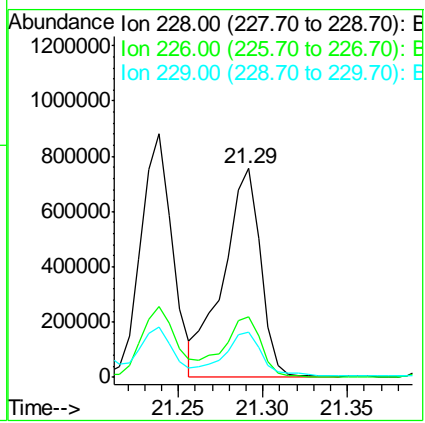
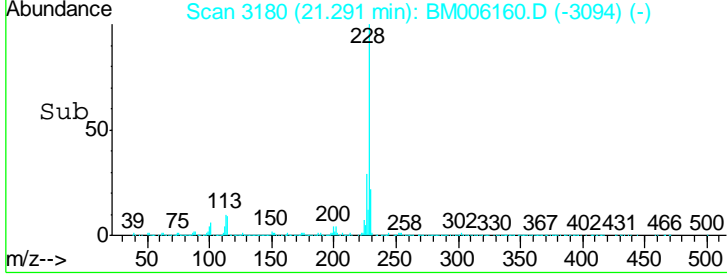
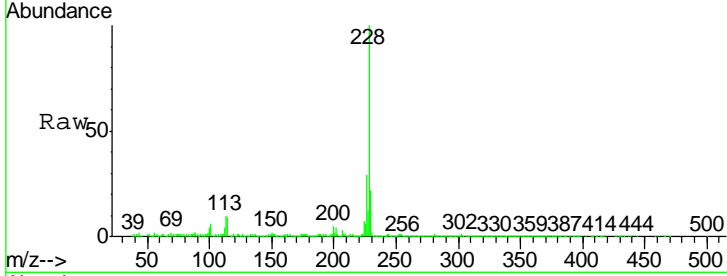
#33  
 Chrysene  
 Concen: 24.13 ng/ul  
 RT: 21.29 min Scan# 3180  
 Delta R.T. 0.01 min  
 Lab File: BM006160.D  
 Acq: 30 Jun 2016 14:58

**Instrument :**  
 BNA\_M  
**Client Sampled :**  
 D9YD4

Tgt Ion: 228 Resp: 1151315

Ion	Ratio	Lower	Upper
228	100		
226	29.2	23.8	35.6
229	21.9	15.8	23.6

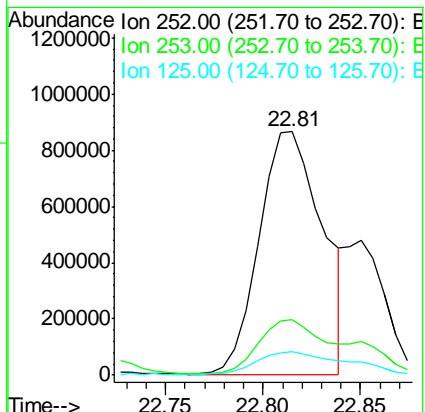
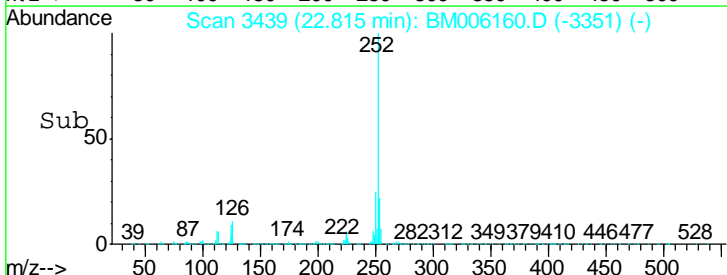
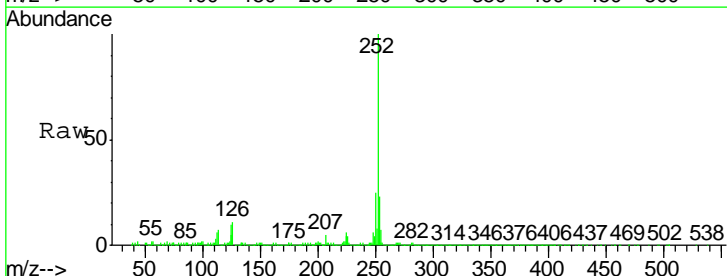
**Manual Integrations**  
**APPROVED**  
 sohil  
 7/1/2016 7:15:20 PM

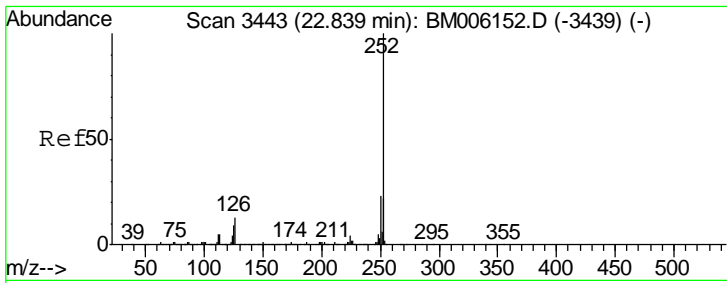


#35  
 Benzo(b)fluoranthene  
 Concen: 33.33 ng/ul  
 RT: 22.81 min Scan# 3439  
 Delta R.T. 0.02 min  
 Lab File: BM006160.D  
 Acq: 30 Jun 2016 14:58

Tgt Ion: 252 Resp: 1943934

Ion	Ratio	Lower	Upper
252	100		
253	22.7	17.2	25.8
125	9.8	7.8	11.6



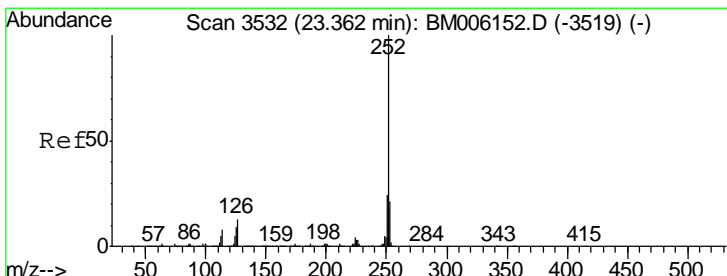
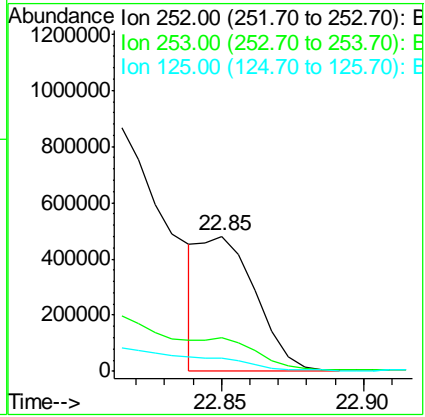
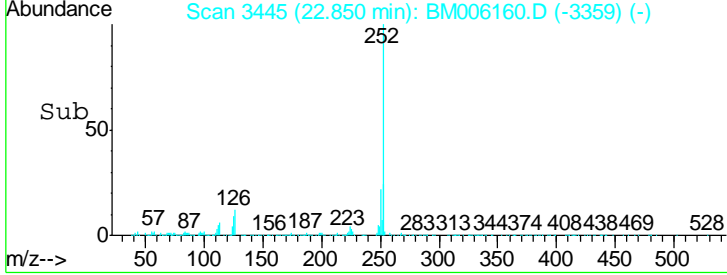
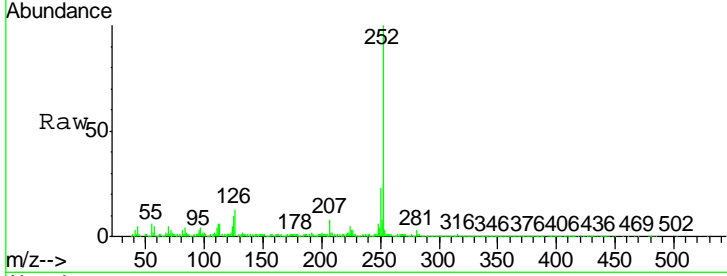


#36  
 Benzo(k)fluoranthene  
 Concen: 11.87 ng/ul m  
 RT: 22.85 min Scan# 3445  
 Delta R.T. 0.01 min  
 Lab File: BM006160.D  
 Acq: 30 Jun 2016 14:58

Instrument :  
 BNA\_M  
 ClientSampled :  
 D9YD4

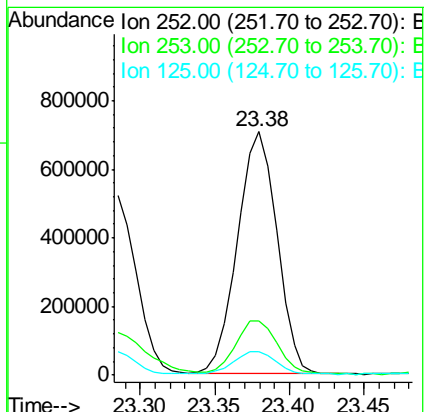
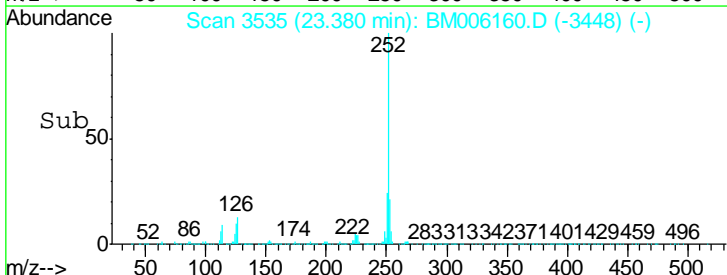
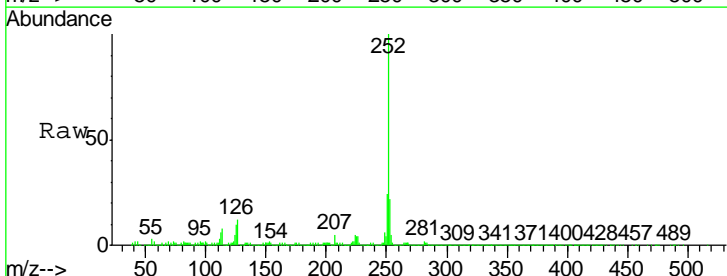
Tgt Ion	Resp	Lower	Upper
252	100		
253	25.0	17.6	26.4
125	10.0	8.1	12.1

Manual Integrations  
 APPROVED  
 sohil  
 7/1/2016 7:15:20 PM

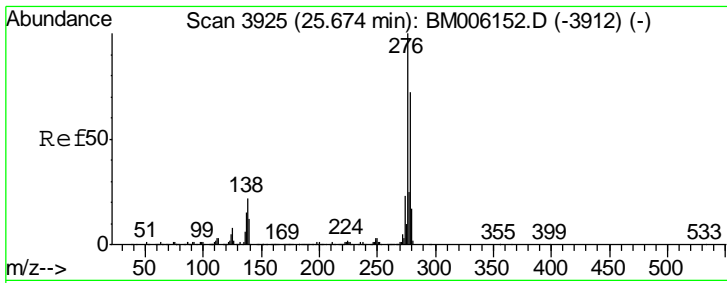


#38  
 Benzo(a)pyrene  
 Concen: 23.65 ng/ul  
 RT: 23.38 min Scan# 3535  
 Delta R.T. 0.01 min  
 Lab File: BM006160.D  
 Acq: 30 Jun 2016 14:58

Tgt Ion	Resp	Lower	Upper
252	100		
253	22.3	17.8	26.6
125	9.7	8.7	13.1





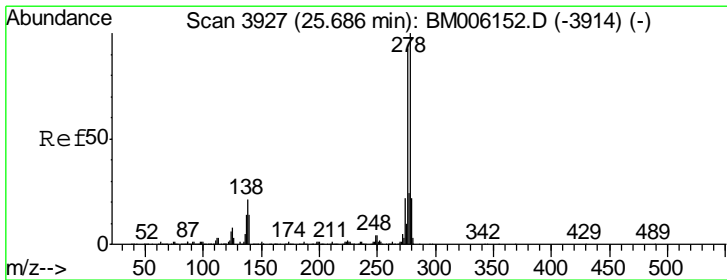
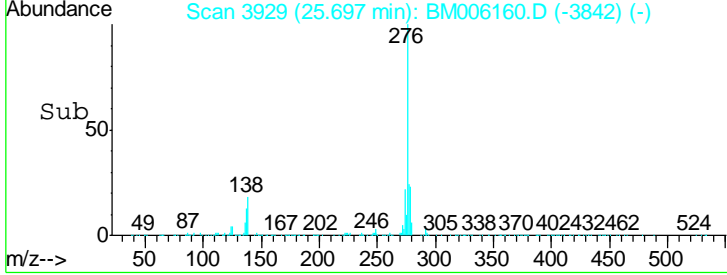
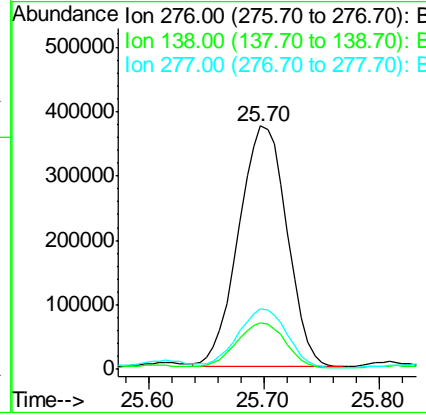
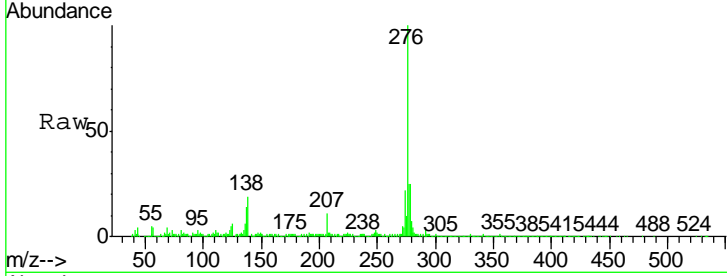


#39  
 Indeno(1,2,3-cd)pyrene  
 Concen: 19.05 ng/ul  
 RT: 25.70 min Scan# 3929  
 Delta R.T. 0.01 min  
 Lab File: BM006160.D  
 Acq: 30 Jun 2016 14:58

Instrument :  
 BNA\_M  
 ClientSampled :  
 D9YD4

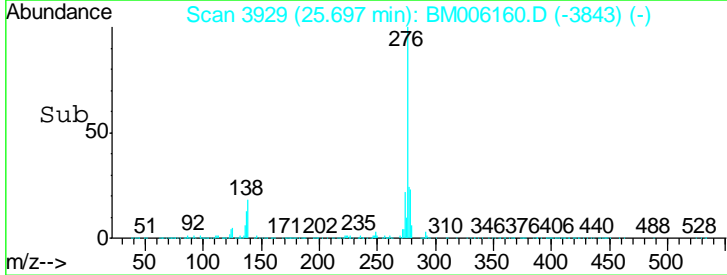
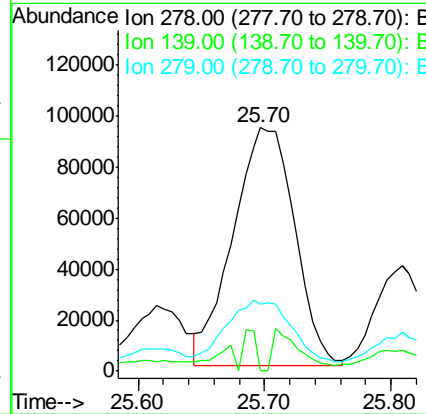
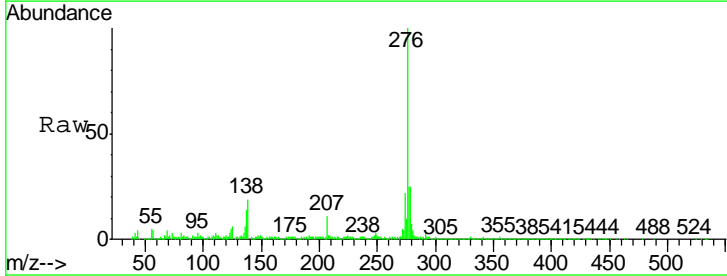
Tgt Ion	Resp	Lower	Upper
276	1091031		
138	19.1	20.4	30.6#
277	25.1	20.6	30.8

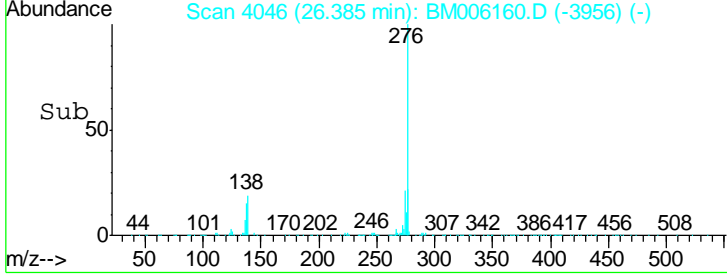
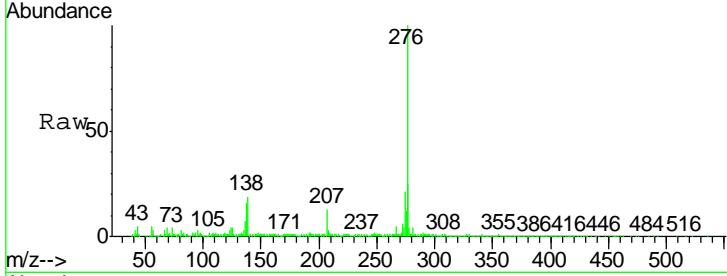
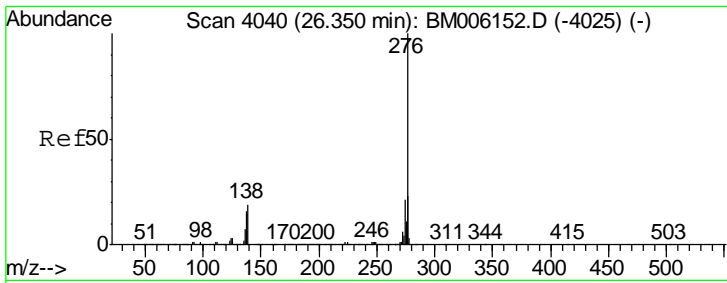
Manual Integrations  
 APPROVED  
 sohil  
 7/1/2016 7:15:20 PM



#40  
 Dibenzo(a,h)anthracene  
 Concen: 6.67 ng/ul m  
 RT: 25.70 min Scan# 3929  
 Delta R.T. 0.01 min  
 Lab File: BM006160.D  
 Acq: 30 Jun 2016 14:58

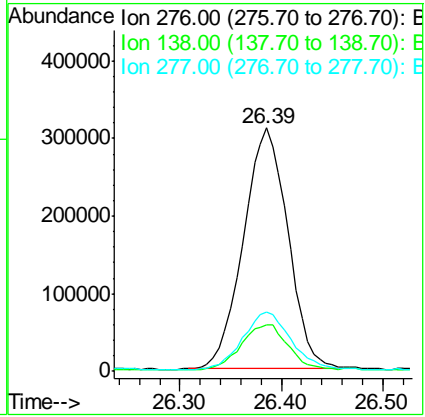
Tgt Ion	Resp	Lower	Upper
278	315918		
139	0.0	13.0	19.4#
279	27.4	18.8	28.2





#41  
 Benzo(a,h,i)perylene  
 Concen: 19.79 ng/ul  
 RT: 26.39 min Scan# 4046  
 Delta R.T. 0.03 min  
 Lab File: BM006160.D  
 Acq: 30 Jun 2016 14:58

Tot Ion	Ratio	Lower	Upper
276	100		
138	19.3	16.6	25.0
277	24.6	18.9	28.3



Instrument :  
 BNA\_M  
 ClientSampled :  
 D9YD4

Manual Integrations  
 APPROVED  
 sohil  
 7/1/2016 7:15:20 PM