

Data Path : Z:\svoasrv\HPCHEM1\BNA\_M\Data\BM063021\  
 Data File : BM030797.D  
 Acq On : 03 Jul 2021 05:36  
 Operator : CG/JU  
 Sample : PB137473BS  
 Misc :  
 ALS Vial : 20 Sample Multiplier: 1

Instrument :  
 BNA\_M  
 ClientSampled :  
 SLCS473

Manual Integrations  
 APPROVED

mohammad  
 7/6/2021 9:25:36 AM

Quant Time: Jul 03 06:53:09 2021  
 Quant Method : Z:\SVOASRV\HPCHEM1\BNA\_M\METHODS\SFAM-EPA-BM062221.M  
 Quant Title : SVOA CALIBRATION  
 QLast Update : Sat Jul 03 06:52:50 2021  
 Response via : Initial Calibration

Compound	R.T.	QIon	Response	Conc	Units	Dev(Min)	
Internal Standards							
1) 1,4-Dichlorobenzene-d4	7.769	152	108954	20.00	ng/ul	0.00	
20) Naphthalene-d8	10.551	136	444595	20.00	ng/ul	0.00	
38) Acenaphthene-d10	14.398	164	257924	20.00	ng/ul	0.00	
64) Phenanthrene-d10	17.139	188	483923	20.00	ng/ul	0.00	
79) Chrysene-d12	21.304	240	475409	20.00	ng/ul	0.00	
88) Perylene-d12	23.550	264	460490	20.00	ng/ul	-0.01	
System Monitoring Compounds							
3) 1,4-Dioxane-d8	3.258	96	17571	6.54	ng/uL	0.00	
4) Pyridine-d5	3.669	84	199499	27.63	ng/ul	0.00	
7) Phenol-d5	6.934	99	327985	34.90	ng/ul	0.00	
9) Bis-(2-Chloroethyl)eth...	7.104	67	206233	34.92	ng/ul	0.00	
11) 2-Chlorophenol-d4	7.299	132	262629	36.21	ng/ul	0.00	
15) 4-Methylphenol-d8	8.475	113	248452	33.98	ng/ul	0.00	
21) Nitrobenzene-d5	8.922	128	121774	36.71	ng/ul	0.00	
24) 2-Nitrophenol-d4	9.640	143	134991	36.61	ng/ul	0.00	
28) 2,4-Dichlorophenol-d3	10.175	165	255703	36.20	ng/ul	0.00	
31) 4-Chloroaniline-d4	10.692	131	305977	31.07	ng/ul	0.00	
46) Dimethylphthalate-d6	13.810	166	690927	38.80	ng/ul	0.00	
49) Acenaphthylene-d8	14.092	160	902038	39.02	ng/ul	0.00	
54) 4-Nitrophenol-d4	14.598	143	114340	33.89	ng/ul	0.00	
60) Fluorene-d10	15.392	176	605796	38.35	ng/ul	0.00	
65) 4,6-Dinitro-2-methylph...	15.516	200	106840	33.75	ng/ul	0.00	
73) Anthracene-d10	17.233	188	824235	36.50	ng/ul	0.00	
81) Pyrene-d10	19.521	212	895604	35.95	ng/ul	0.00	
92) Benzo(a)pyrene-d12	23.409	264	1020855	42.64	ng/ul	0.00	
Target Compounds							
2) 1,4-Dioxane	3.293	88	42414	14.84	ng/uL	97	Qvalue
5) Pyridine	3.687	79	233342	30.02	ng/ul	99	
6) Benzaldehyde	6.916	77	201512m	44.11	ng/ul		
8) Phenol	6.963	94	336553	35.42	ng/ul	98	
10) Bis(2-Chloroethyl)ether	7.199	93	254349	33.97	ng/ul	99	
12) 2-Chlorophenol	7.334	128	263057	35.99	ng/ul	98	
13) 2-Methylphenol	8.204	108	237428	34.48	ng/ul	100	
14) 2,2'-oxybis(1-Chloropr...	8.298	45	419379	35.33	ng/ul	98	
16) Acetophenone	8.593	105	401344	35.54	ng/ul	98	
17) N-Nitroso-di-n-propyla...	8.581	70	207647	37.18	ng/ul	99	
18) 4-Methylphenol	8.534	108	260357	34.72	ng/ul	95	
19) Hexachloroethane	8.840	117	106648	34.82	ng/ul	98	
22) Nitrobenzene	8.969	77	311534	37.22	ng/ul	99	
23) Isophorone	9.493	82	541365	37.35	ng/ul	99	
25) 2-Nitrophenol	9.675	139	144858	37.00	ng/ul	98	
26) 2,4-Dimethylphenol	9.728	107	186572	23.58	ng/ul	98	
27) Bis(2-Chloroethoxy)met...	9.969	93	336829	35.72	ng/ul	99	
29) 2,4-Dichlorophenol	10.204	162	247980	36.65	ng/ul	99	
30) Naphthalene	10.604	128	807917	35.89	ng/ul	99	
32) 4-Chloroaniline	10.716	127	301703	30.85	ng/ul	99	
33) Hexachlorobutadiene	10.881	225	162099	35.43	ng/ul	99	
34) Caprolactam	11.498	113	70717	36.01	ng/ul	89	
35) 4-Chloro-3-methylphenol	11.839	107	258092	38.85	ng/ul	98	
36) 2-Methylnaphthalene	12.216	142	573914	36.54	ng/ul	99	

Data Path : Z:\svoasrv\HPCHEM1\BNA\_M\Data\BM063021\  
 Data File : BM030797.D  
 Acq On : 03 Jul 2021 05:36  
 Operator : CG/JU  
 Sample : PB137473BS  
 Misc :  
 ALS Vial : 20 Sample Multiplier: 1

Instrument :  
 BNA\_M  
 ClientSampled :  
 SLCS473

Manual Integrations  
 APPROVED

mohammad  
 7/6/2021 9:25:36 AM

Quant Time: Jul 03 06:53:09 2021  
 Quant Method : Z:\SVOASRV\HPCHEM1\BNA\_M\METHODS\SFAM-EPA-BM062221.M  
 Quant Title : SVOA CALIBRATION  
 QLast Update : Sat Jul 03 06:52:50 2021  
 Response via : Initial Calibration

Compound	R.T.	QIon	Response	Conc	Units	Dev(Min)
37) 1-Methylnaphthalene	12.434	142	560976	35.28	ng/ul	98
39) 1,2,4,5-Tetrachloroben...	12.586	216	306853	38.13	ng/ul	99
40) Hexachlorocyclopentadiene	12.563	237	121617	23.16	ng/ul	99
41) 2,4,6-Trichlorophenol	12.828	196	183884	36.28	ng/ul	98
42) 2,4,5-Trichlorophenol	12.898	196	204553	37.82	ng/ul	99
43) 1,1'-Biphenyl	13.228	154	737241	38.73	ng/ul	99
44) 2-Chloronaphthalene	13.269	162	578912	38.68	ng/ul	98
45) 2-Nitroaniline	13.480	65	175073	43.53	ng/ul	98
47) Dimethylphthalate	13.857	163	703169	40.30	ng/ul	99
48) 2,6-Dinitrotoluene	13.980	165	145801	43.37	ng/ul	97
50) Acenaphthylene	14.122	152	841065	39.22	ng/ul	99
51) 3-Nitroaniline	14.310	138	143191	39.98	ng/ul	99
52) Acenaphthene	14.463	153	614828	39.51	ng/ul	99
53) 2,4-Dinitrophenol	14.516	184	67966	30.75	ng/ul	97
55) 4-Nitrophenol	14.616	109	100110	37.09	ng/ul	99
56) Dibenzofuran	14.798	168	844028	38.91	ng/ul	99
57) 2,4-Dinitrotoluene	14.769	165	202232	42.96	ng/ul#	99
58) 2,3,4,6-Tetrachlorophenol	15.022	232	150078	34.28	ng/ul#	96
59) Diethylphthalate	15.222	149	688041	41.05	ng/ul	99
61) Fluorene	15.445	166	714220	39.95	ng/ul	100
62) 4-Chlorophenyl-phenyle...	15.439	204	355337	39.91	ng/ul	99
63) 4-Nitroaniline	15.474	138	145750	42.74	ng/ul	94
66) 4,6-Dinitro-2-methylph...	15.533	198	106452	34.55	ng/ul	100
67) N-Nitrosodiphenylamine	15.651	169	580322	40.24	ng/ul	99
68) 4-Bromophenyl-phenylether	16.333	248	204971	41.51	ng/ul	99
69) Hexachlorobenzene	16.451	284	234692	41.09	ng/ul	98
70) Atrazine	16.604	200	91556	17.90	ng/ul	97
71) Pentachlorophenol	16.792	266	106720	29.82	ng/ul	98
72) Phenanthrene	17.180	178	1029515	39.62	ng/ul	100
74) Anthracene	17.268	178	1005778	37.85	ng/ul	99
75) 1,2,3,4-Tetrachloroben...	13.192	216	305657	39.60	ng/uL	98
76) Pentachlorobenzene	14.716	250	281227	38.25	ng/uL	98
77) Carbazole	17.539	167	897530	37.67	ng/ul	99
78) Di-n-butylphthalate	18.098	149	1055091	43.46	ng/ul	99
80) Fluoranthene	19.192	202	1130696	37.17	ng/ul	99
82) Pyrene	19.551	202	1178820	36.88	ng/ul	99
83) Butylbenzylphthalate	20.445	149	431414	41.00	ng/ul	99
84) 3,3'-Dichlorobenzidine	21.221	252	335301	35.78	ng/ul	99
85) Benzo(a)anthracene	21.292	228	1165967	39.52	ng/ul	99
86) Bis(2-ethylhexyl)phtha...	21.215	149	614684	40.61	ng/ul	100
87) Chrysene	21.345	228	1137213	39.54	ng/ul	99
89) Di-n-octyl phthalate	22.092	149	1047353	39.54	ng/ul	100
90) Benzo(b)fluoranthene	22.874	252	1260243	43.11	ng/ul	100
91) Benzo(k)fluoranthene	22.921	252	1239331	44.11	ng/ul	99
93) Benzo(a)pyrene	23.456	252	1128842	42.94	ng/ul	100
94) Indeno(1,2,3-cd)pyrene	25.833	276	1549657	46.83	ng/ul	99
95) Dibenzo(a,h)anthracene	25.839	278	1312911	47.86	ng/ul	99
96) Benzo(g,h,i)perylene	26.527	276	1255756	45.48	ng/ul	99

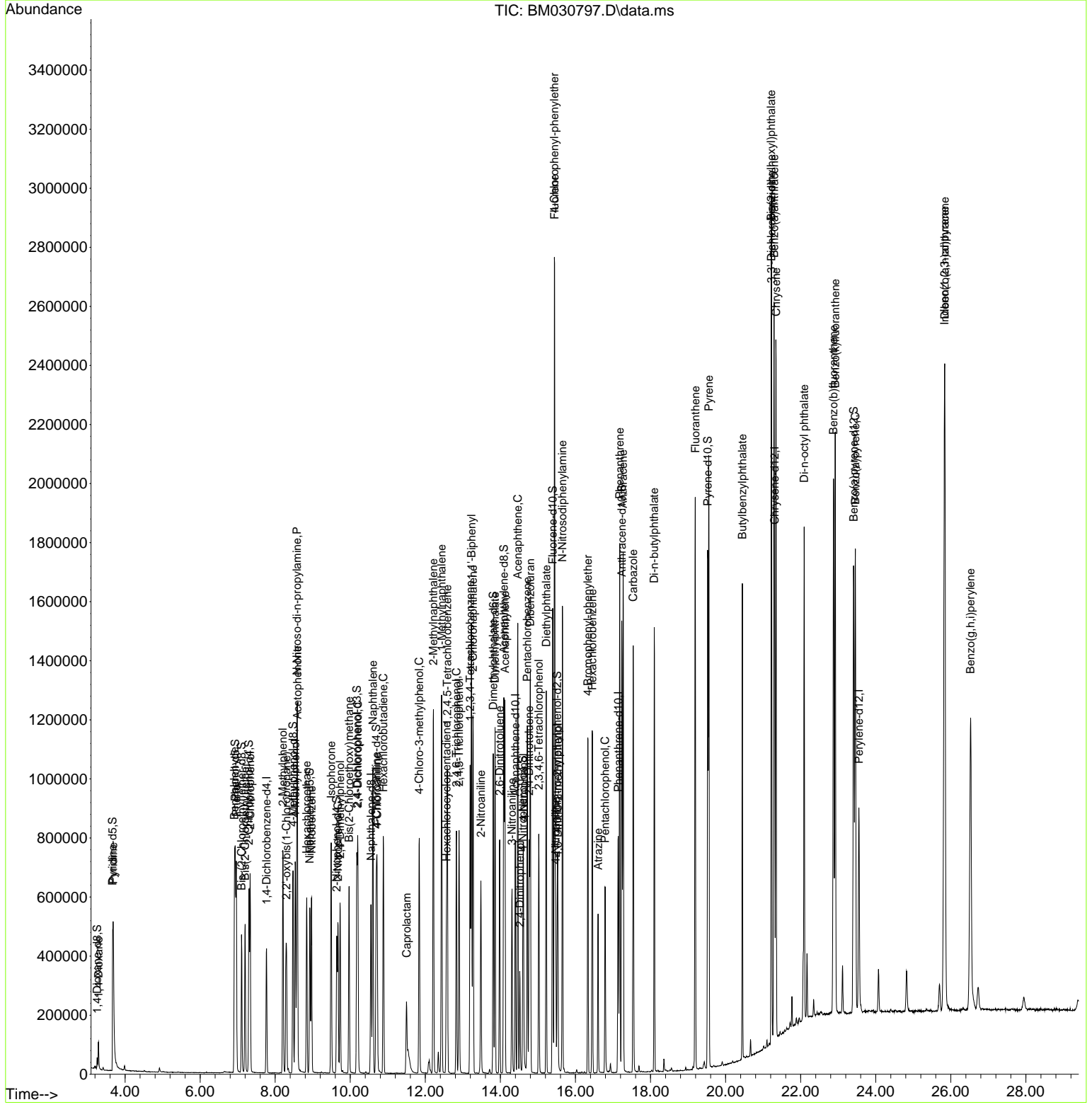
(#) = qualifier out of range (m) = manual integration (+) = signals summed

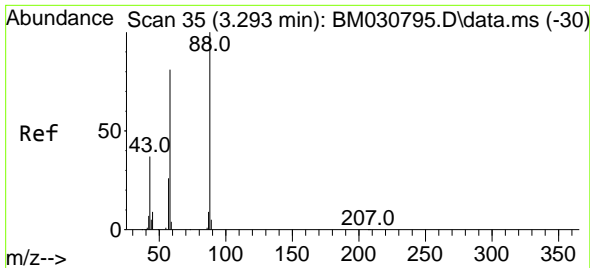
Data Path : Z:\svoasrv\HPCHEM1\BNA\_M\Data\BM063021\  
 Data File : BM030797.D  
 Acq On : 03 Jul 2021 05:36  
 Operator : CG/JU  
 Sample : PB137473BS  
 Misc :  
 ALS Vial : 20 Sample Multiplier: 1

Instrument :  
 BNA\_M  
 Client Sampled :  
 SLCS473

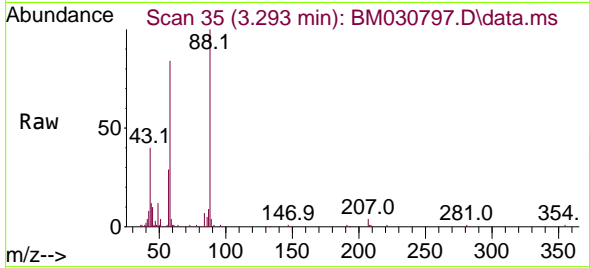
Manual Integrations  
 APPROVED  
 mohammad  
 7/6/2021 9:25:36 AM

Quant Time: Jul 03 06:53:09 2021  
 Quant Method : Z:\SVOASRV\HPCHEM1\BNA\_M\METHODS\SFAM-EPA-BM062221.M  
 Quant Title : SVOA CALIBRATION  
 QLast Update : Sat Jul 03 06:52:50 2021  
 Response via : Initial Calibration

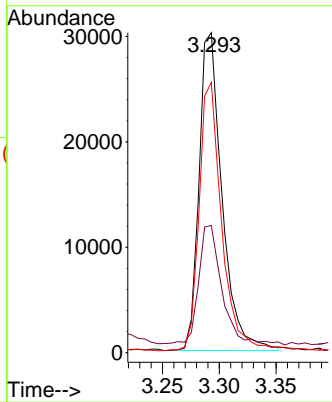
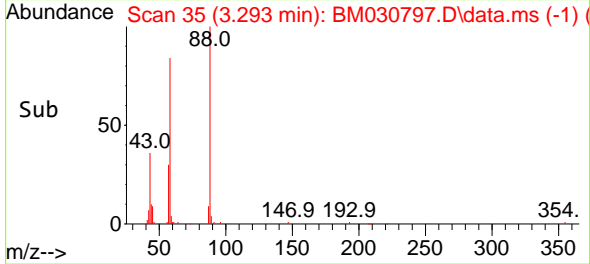




#2  
 1,4-Dioxane  
 Concen: 14.84 ng/uL  
 RT: 3.293 min Scan# 35  
 Delta R.T. 0.000 min  
 Lab File: BM030797.D  
 Acq: 03 Jul 2021 05:36



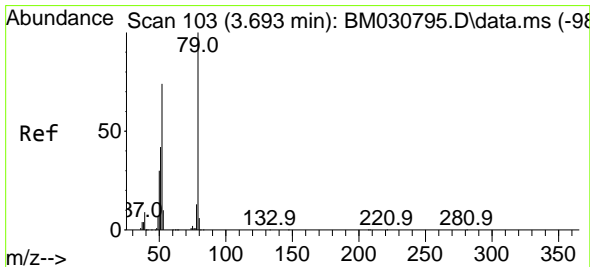
Tgt Ion: 88 Resp: 42414  
 Ion Ratio Lower Upper  
 88 100  
 43 39.7 31.5 47.3  
 58 84.4 64.1 96.1



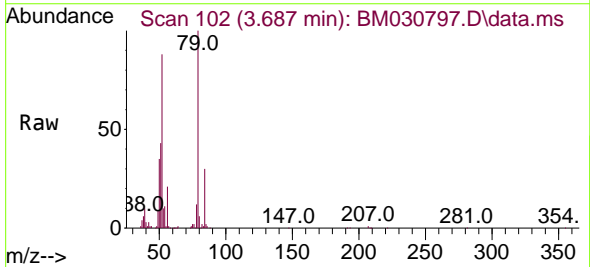
Instrument :  
 BNA\_M  
 ClientSampled :  
 SLCS473

Manual Integrations  
 APPROVED

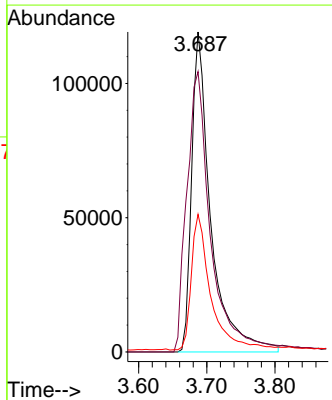
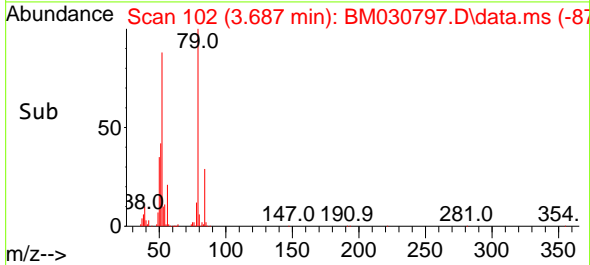
mohammad  
 7/6/2021 9:25:36 AM

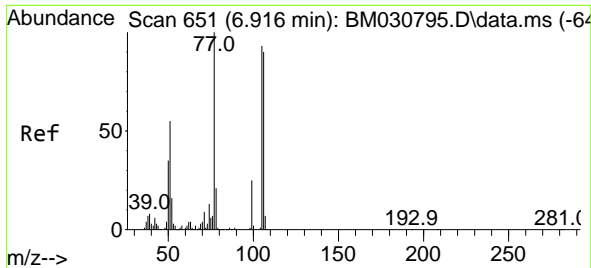


#5  
 Pyridine  
 Concen: 30.02 ng/uL  
 RT: 3.687 min Scan# 102  
 Delta R.T. -0.012 min  
 Lab File: BM030797.D  
 Acq: 03 Jul 2021 05:36



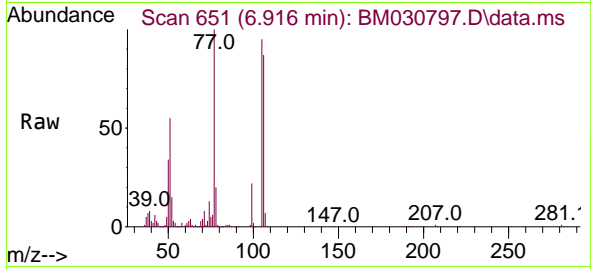
Tgt Ion: 79 Resp: 233342  
 Ion Ratio Lower Upper  
 79 100  
 52 87.6 69.9 104.9  
 51 43.0 33.8 50.6





#6  
Benzaldehyde  
Concen: 44.11 ng/ul m  
RT: 6.916 min Scan# 651  
Delta R.T. -0.006 min  
Lab File: BM030797.D  
Acq: 03 Jul 2021 05:36

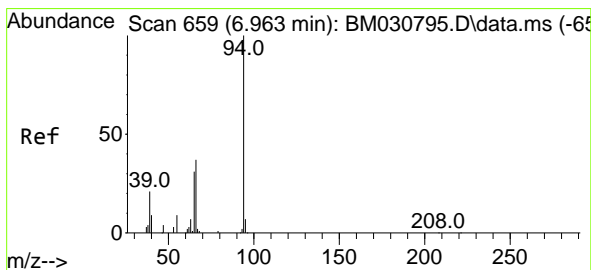
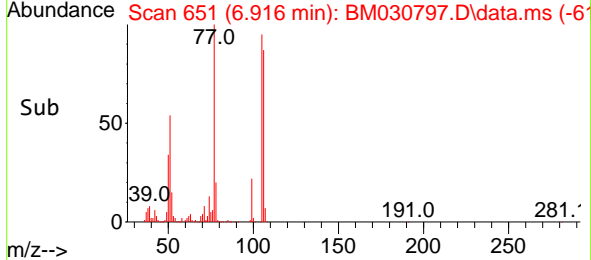
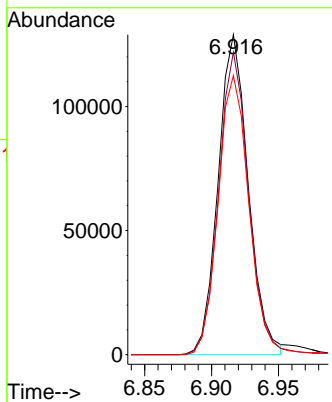
**Instrument :**  
BNA\_M  
**ClientSampled :**  
SLCS473



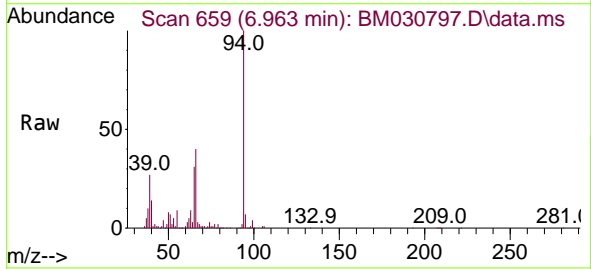
Tgt Ion: 77 Resp: 201512

Ion	Ratio	Lower	Upper
77	100		
105	94.6	82.2	123.4
106	87.3	75.0	112.4

**Manual Integrations**  
**APPROVED**  
mohammad  
7/6/2021 9:25:36 AM

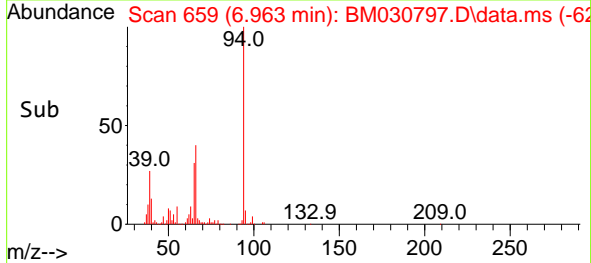
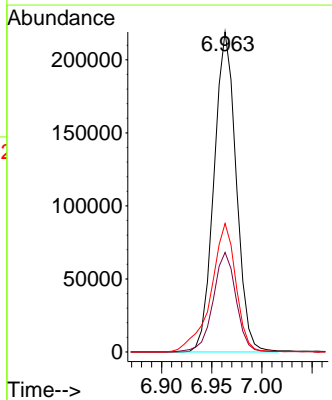


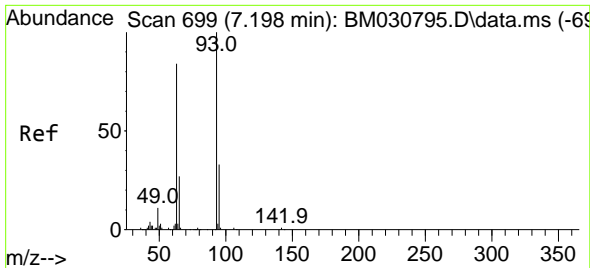
#8  
Phenol  
Concen: 35.42 ng/ul  
RT: 6.963 min Scan# 659  
Delta R.T. 0.000 min  
Lab File: BM030797.D  
Acq: 03 Jul 2021 05:36



Tgt Ion: 94 Resp: 336553

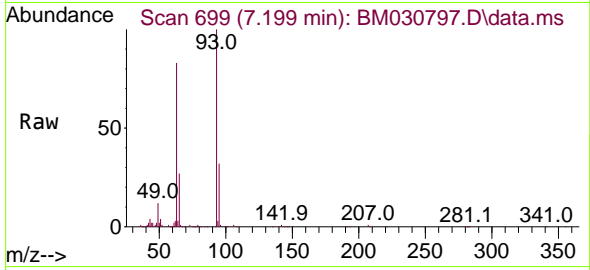
Ion	Ratio	Lower	Upper
94	100		
65	31.1	24.2	36.4
66	40.2	31.4	47.0





#10  
 Bis(2-Chloroethyl)ether  
 Concen: 33.97 ng/ul  
 RT: 7.199 min Scan# 699  
 Delta R.T. 0.000 min  
 Lab File: BM030797.D  
 Acq: 03 Jul 2021 05:36

Instrument :  
 BNA\_M  
 ClientSampled :  
 SLCS473

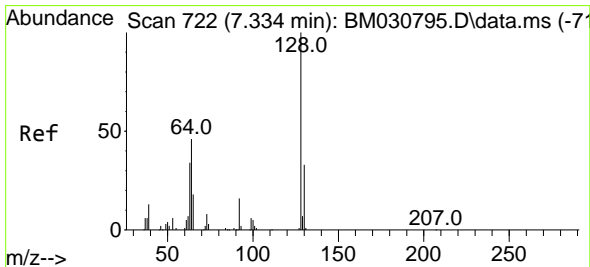
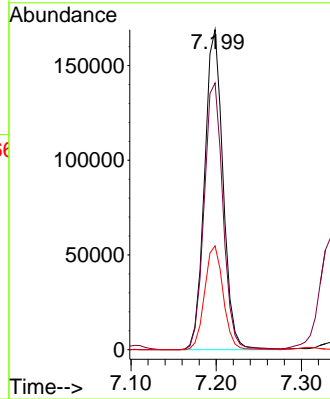
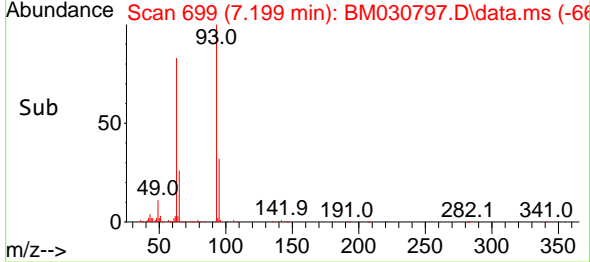


Tgt Ion: 93 Resp: 254349

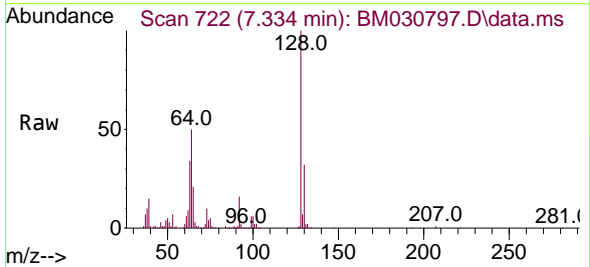
Ion	Ratio	Lower	Upper
93	100		
63	83.3	68.0	102.0
95	32.5	25.8	38.6

Manual Integrations  
 APPROVED

mohammad  
 7/6/2021 9:25:36 AM

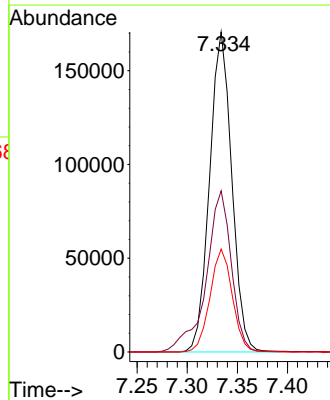
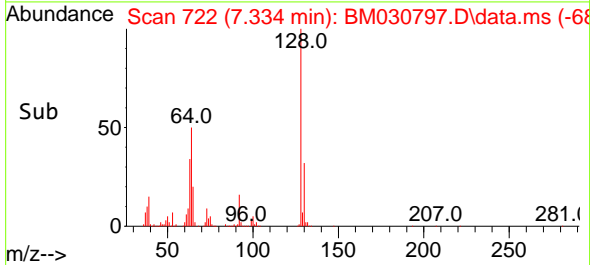


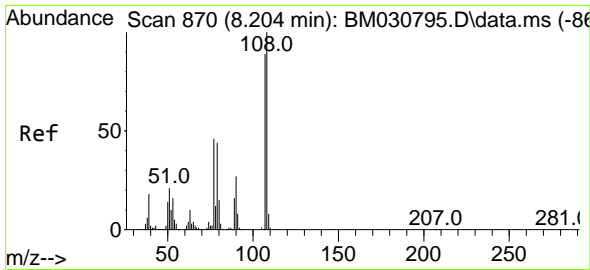
#12  
 2-Chlorophenol  
 Concen: 35.99 ng/ul  
 RT: 7.334 min Scan# 722  
 Delta R.T. 0.000 min  
 Lab File: BM030797.D  
 Acq: 03 Jul 2021 05:36



Tgt Ion: 128 Resp: 263057

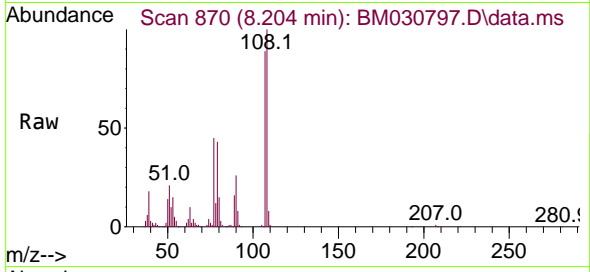
Ion	Ratio	Lower	Upper
128	100		
64	50.3	39.2	58.8
130	32.2	25.3	37.9





#13  
 2-Methylphenol  
 Concen: 34.48 ng/ul  
 RT: 8.204 min Scan# 870  
 Delta R.T. -0.006 min  
 Lab File: BM030797.D  
 Acq: 03 Jul 2021 05:36

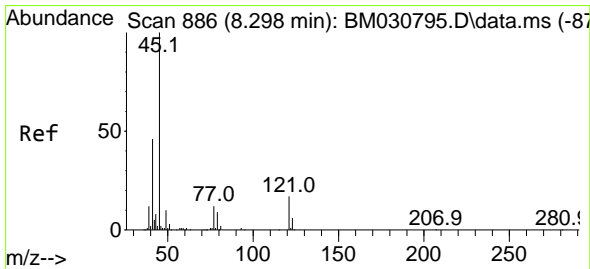
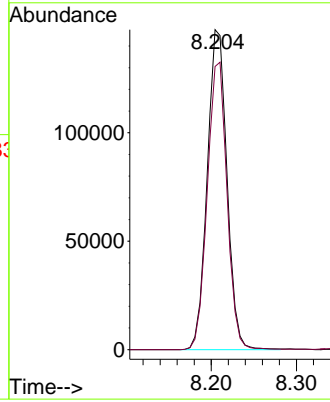
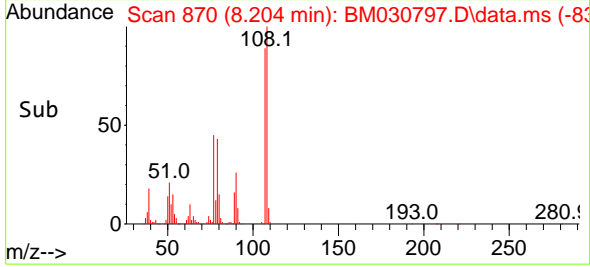
**Instrument :**  
 BNA\_M  
**ClientSampled :**  
 SLCS473



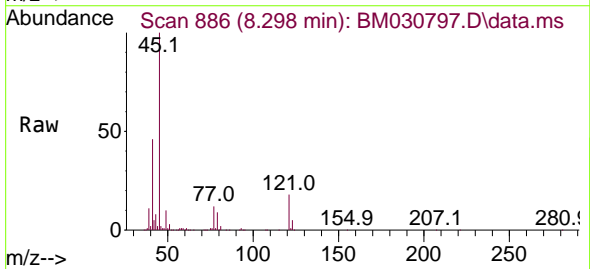
Tgt Ion: 108 Resp: 237428  
 Ion Ratio Lower Upper  
 108 100  
 107 88.5 70.6 105.8

**Manual Integrations**  
**APPROVED**

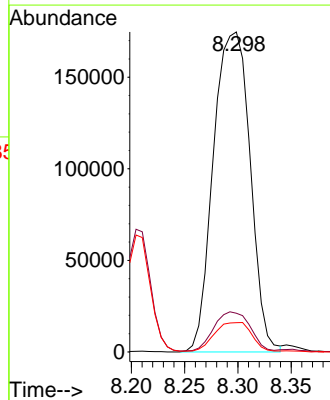
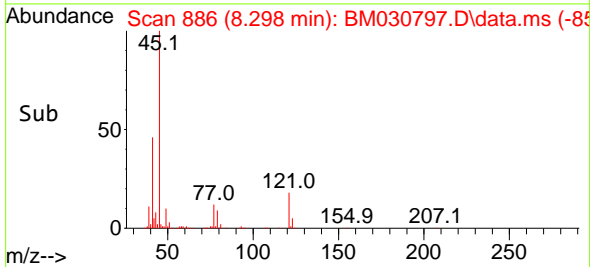
mohammad  
 7/6/2021 9:25:36 AM

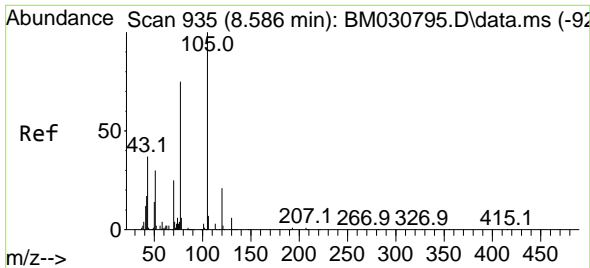


#14  
 2,2'-oxybis(1-Chloropropane)  
 Concen: 35.33 ng/ul  
 RT: 8.298 min Scan# 886  
 Delta R.T. 0.000 min  
 Lab File: BM030797.D  
 Acq: 03 Jul 2021 05:36



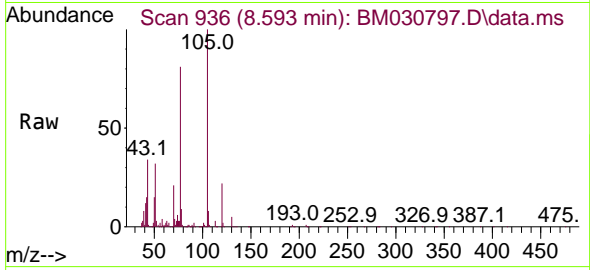
Tgt Ion: 45 Resp: 419379  
 Ion Ratio Lower Upper  
 45 100  
 77 12.1 10.2 15.4  
 79 9.2 7.8 11.8





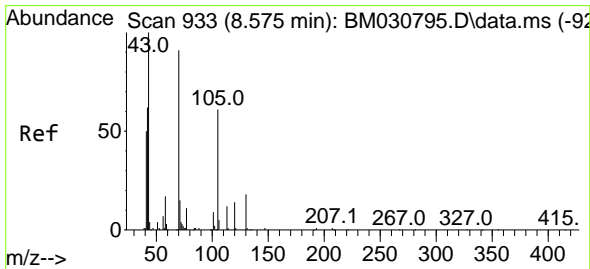
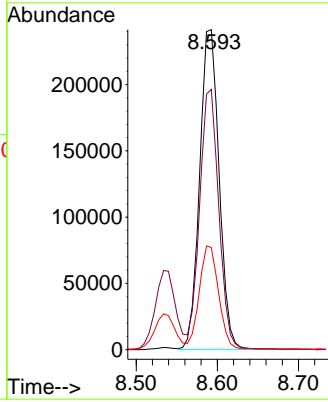
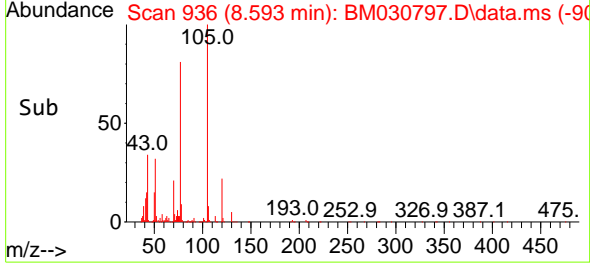
#16  
 Acetophenone  
 Concen: 35.54 ng/ul  
 RT: 8.593 min Scan# 936  
 Delta R.T. 0.000 min  
 Lab File: BM030797.D  
 Acq: 03 Jul 2021 05:36

**Instrument :**  
 BNA\_M  
**ClientSampled :**  
 SLCS473

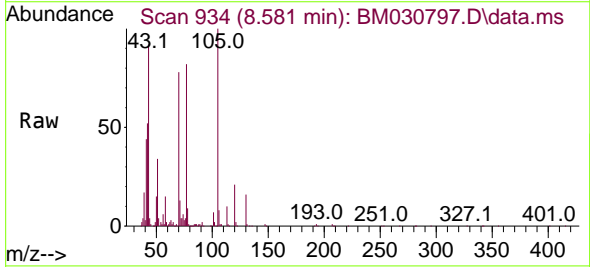


Tgt Ion: 105 Resp: 401344  
 Ion Ratio Lower Upper  
 105 100  
 77 81.3 63.7 95.5  
 51 32.0 25.4 38.0

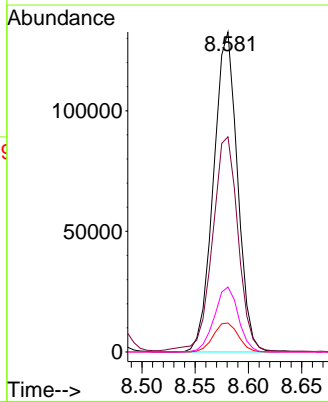
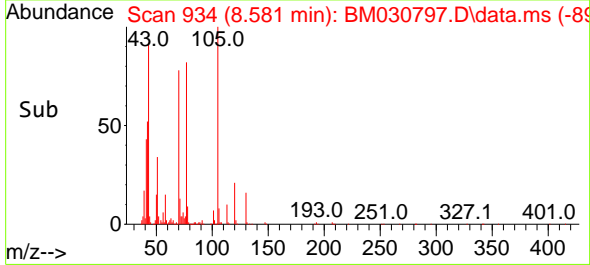
**Manual Integrations**  
**APPROVED**  
 mohammad  
 7/6/2021 9:25:36 AM



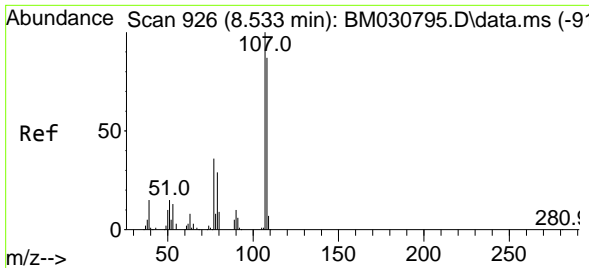
#17  
 N-Nitroso-di-n-propylamine  
 Concen: 37.18 ng/ul  
 RT: 8.581 min Scan# 934  
 Delta R.T. 0.006 min  
 Lab File: BM030797.D  
 Acq: 03 Jul 2021 05:36



Tgt Ion: 70 Resp: 207647  
 Ion Ratio Lower Upper  
 70 100  
 42 67.2 53.4 80.0  
 101 9.1 7.4 11.0  
 130 20.3 16.8 25.2

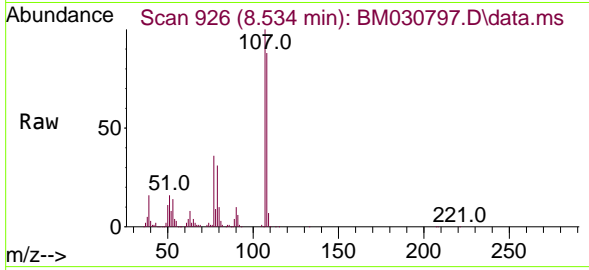






#18  
 4-Methylphenol  
 Concen: 34.72 ng/ul  
 RT: 8.534 min Scan# 926  
 Delta R.T. 0.000 min  
 Lab File: BM030797.D  
 Acq: 03 Jul 2021 05:36

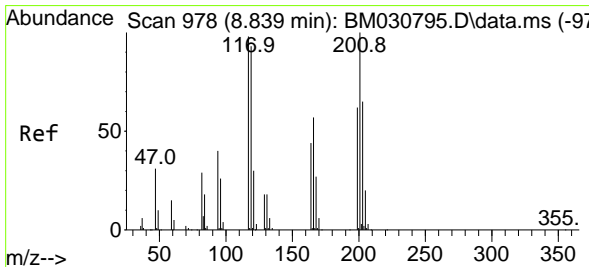
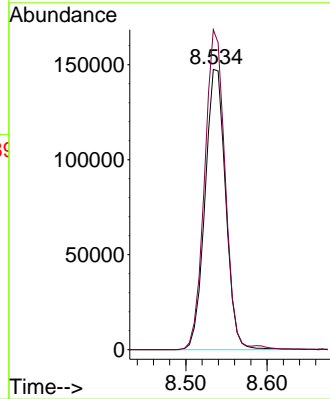
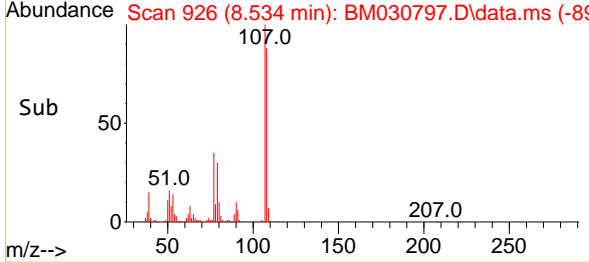
Instrument :  
 BNA\_M  
 ClientSampled :  
 SLCS473



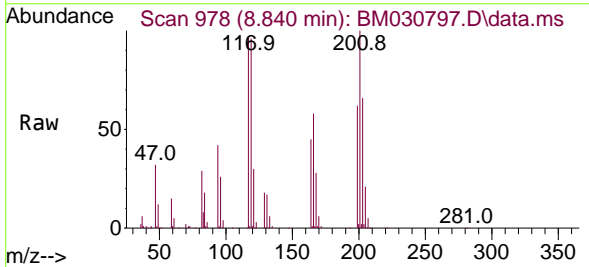
Tgt Ion:108 Resp: 260357  
 Ion Ratio Lower Upper  
 108 100  
 107 114.1 87.0 130.6

Manual Integrations  
 APPROVED

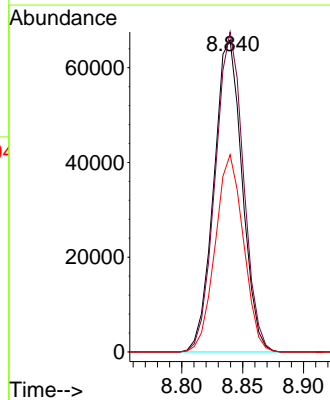
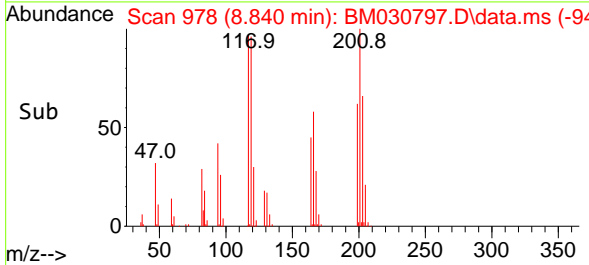
mohammad  
 7/6/2021 9:25:36 AM

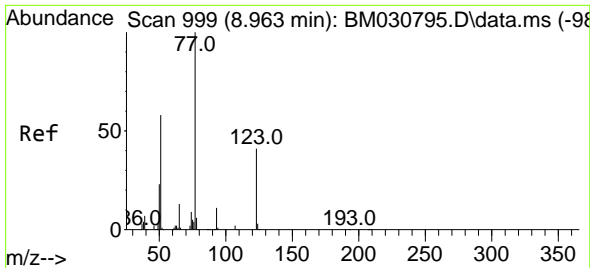


#19  
 Hexachloroethane  
 Concen: 34.82 ng/ul  
 RT: 8.840 min Scan# 978  
 Delta R.T. 0.000 min  
 Lab File: BM030797.D  
 Acq: 03 Jul 2021 05:36



Tgt Ion:117 Resp: 106648  
 Ion Ratio Lower Upper  
 117 100  
 201 102.6 80.1 120.1  
 199 63.2 50.8 76.2



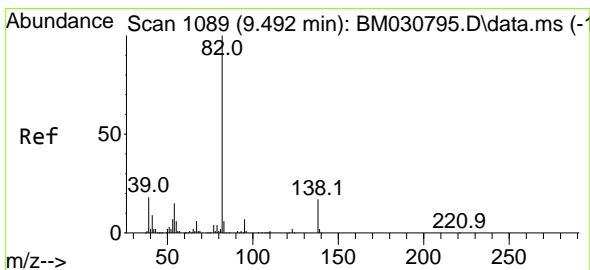
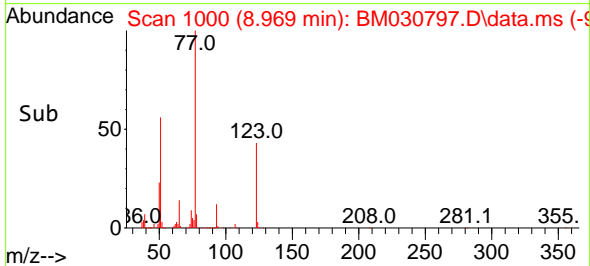
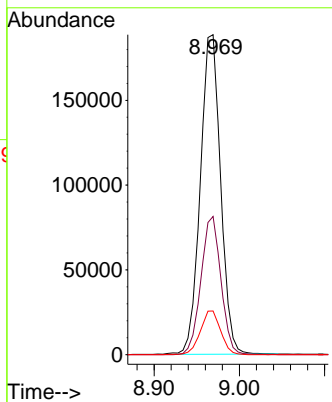
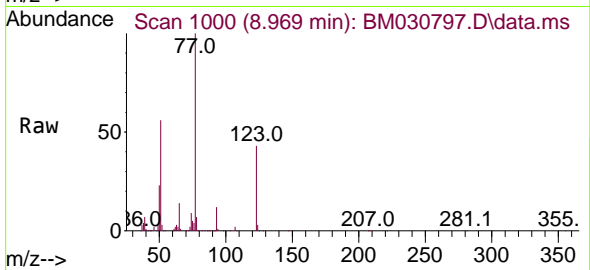


#22  
 Nitrobenzene  
 Concen: 37.22 ng/ul  
 RT: 8.969 min Scan# 1000  
 Delta R.T. 0.000 min  
 Lab File: BM030797.D  
 Acq: 03 Jul 2021 05:36

Tgt Ion:	Resp:	Lower	Upper
77	311534		
123	43.2	34.8	52.2
65	13.7	10.4	15.6

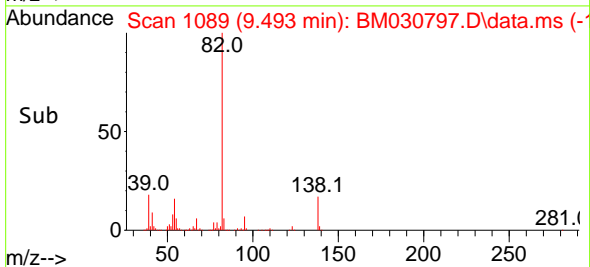
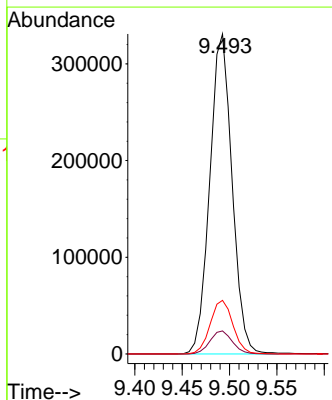
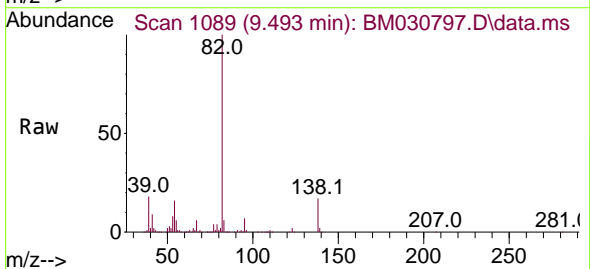
**Instrument :**  
 BNA\_M  
**ClientSampled :**  
 SLCS473

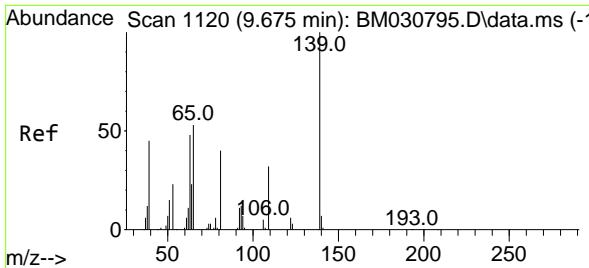
**Manual Integrations**  
**APPROVED**  
 mohammad  
 7/6/2021 9:25:36 AM



#23  
 Isophorone  
 Concen: 37.35 ng/ul  
 RT: 9.493 min Scan# 1089  
 Delta R.T. 0.000 min  
 Lab File: BM030797.D  
 Acq: 03 Jul 2021 05:36

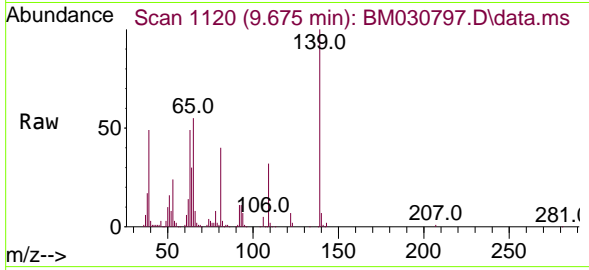
Tgt Ion:	Resp:	Lower	Upper
82	541365		
95	7.2	5.3	7.9
138	16.8	13.6	20.4





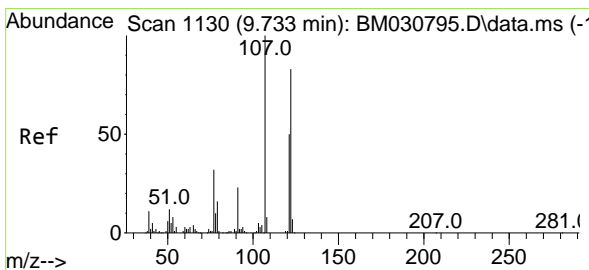
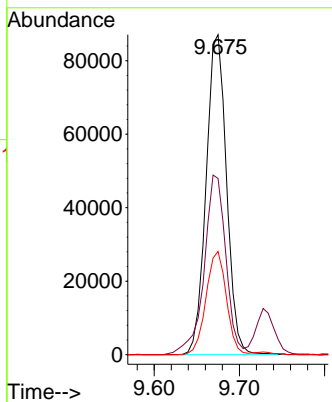
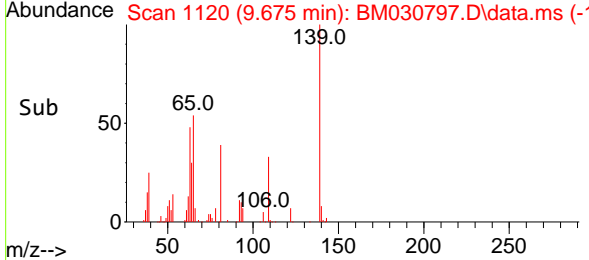
#25  
 2-Nitrophenol  
 Concen: 37.00 ng/ul  
 RT: 9.675 min Scan# 1120  
 Delta R.T. 0.000 min  
 Lab File: BM030797.D  
 Acq: 03 Jul 2021 05:36

**Instrument :**  
 BNA\_M  
**ClientSampled :**  
 SLCS473

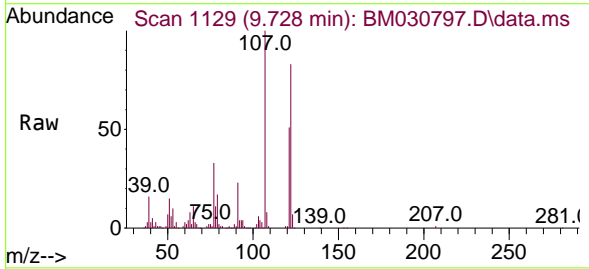


Tgt Ion:139 Resp: 144858  
 Ion Ratio Lower Upper  
 139 100  
 65 55.0 43.7 65.5  
 109 32.3 24.0 36.0

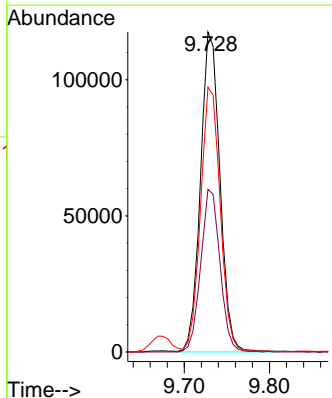
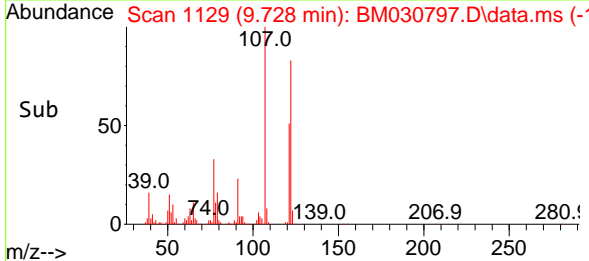
**Manual Integrations**  
**APPROVED**  
 mohammad  
 7/6/2021 9:25:36 AM

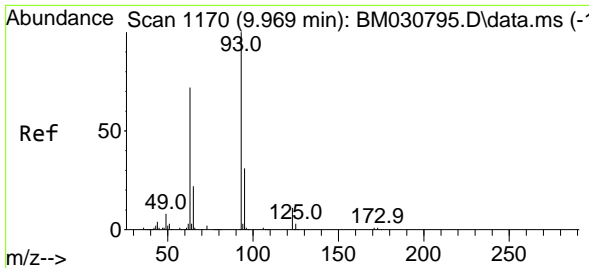


#26  
 2,4-Dimethylphenol  
 Concen: 23.58 ng/ul  
 RT: 9.728 min Scan# 1129  
 Delta R.T. -0.006 min  
 Lab File: BM030797.D  
 Acq: 03 Jul 2021 05:36



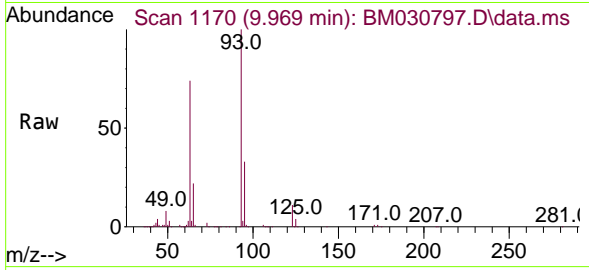
Tgt Ion:107 Resp: 186572  
 Ion Ratio Lower Upper  
 107 100  
 121 50.8 41.0 61.6  
 122 82.7 68.2 102.2





#27  
 Bis(2-Chloroethoxy)methane  
 Concen: 35.72 ng/ul  
 RT: 9.969 min Scan# 1170  
 Delta R.T. 0.000 min  
 Lab File: BM030797.D  
 Acq: 03 Jul 2021 05:36

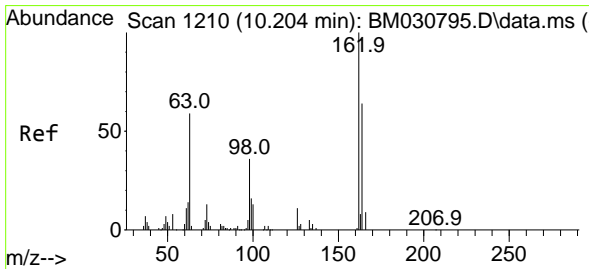
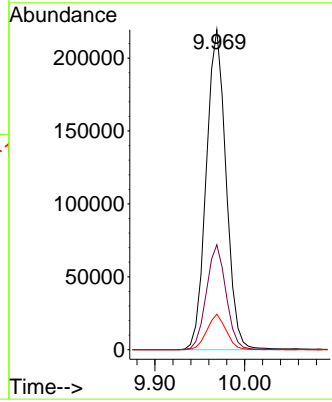
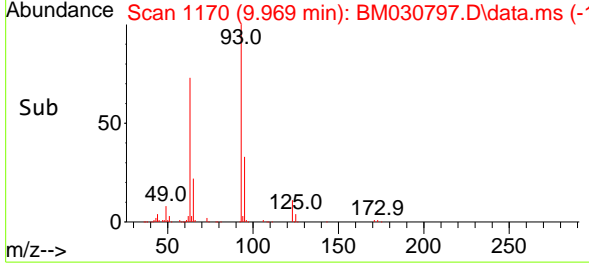
**Instrument :**  
 BNA\_M  
**ClientSampled :**  
 SLCS473



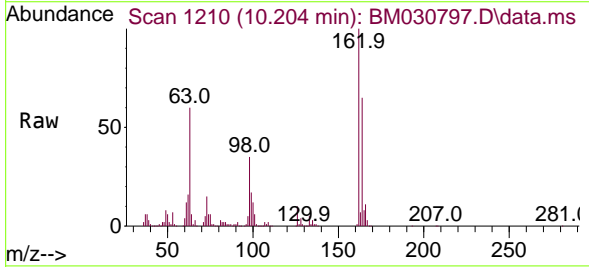
Tgt Ion: 93 Resp: 336829

Ion	Ratio	Lower	Upper
93	100		
95	32.8	25.9	38.9
123	11.1	8.5	12.7

**Manual Integrations**  
**APPROVED**  
 mohammad  
 7/6/2021 9:25:36 AM

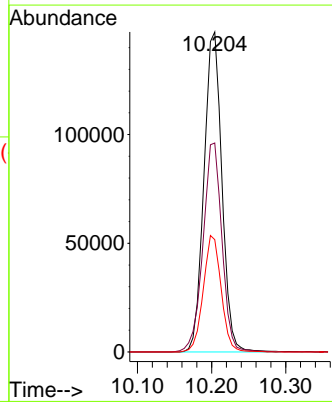
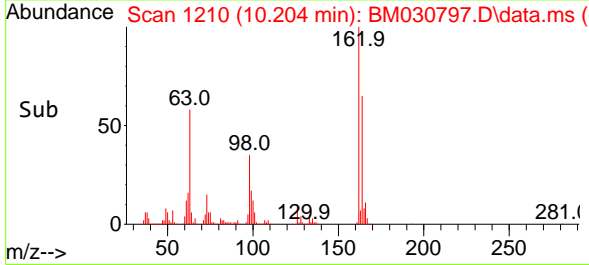


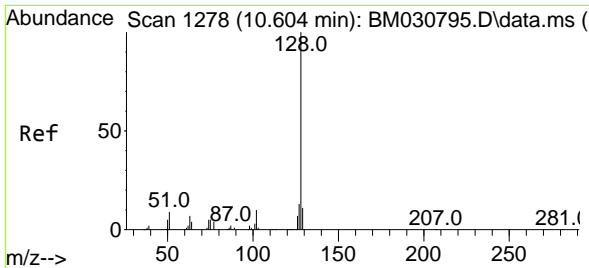
#29  
 2,4-Dichlorophenol  
 Concen: 36.65 ng/ul  
 RT: 10.204 min Scan# 1210  
 Delta R.T. 0.000 min  
 Lab File: BM030797.D  
 Acq: 03 Jul 2021 05:36



Tgt Ion: 162 Resp: 247980

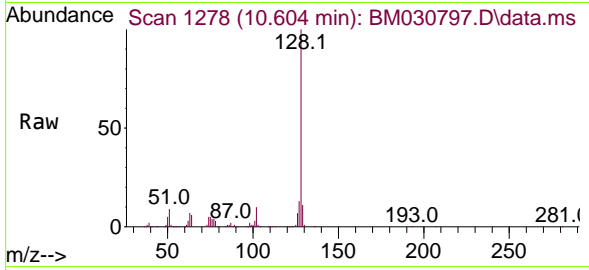
Ion	Ratio	Lower	Upper
162	100		
164	65.3	51.6	77.4
98	35.1	28.2	42.4





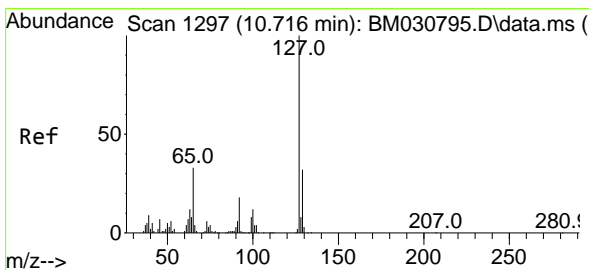
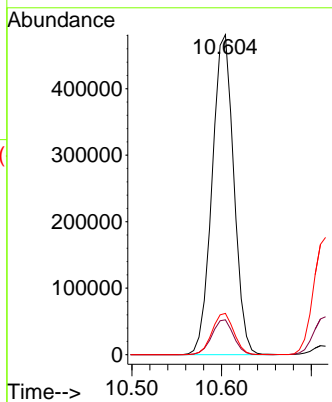
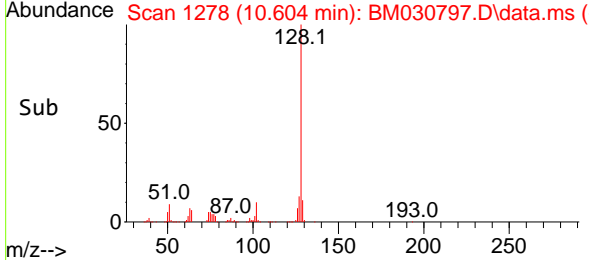
#30  
 Naphthalene  
 Concen: 35.89 ng/ul  
 RT: 10.604 min Scan# 1278  
 Delta R.T. 0.000 min  
 Lab File: BM030797.D  
 Acq: 03 Jul 2021 05:36

**Instrument :**  
 BNA\_M  
**ClientSampled :**  
 SLCS473

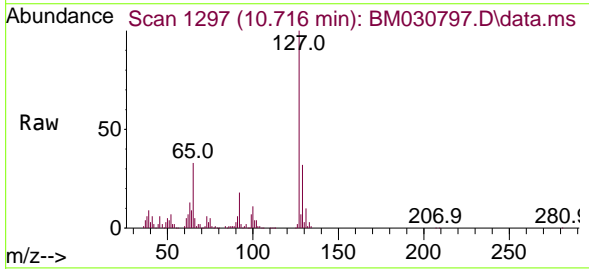


Tgt Ion:128 Resp: 807917  
 Ion Ratio Lower Upper  
 128 100  
 129 10.9 9.0 13.4  
 127 12.9 10.6 15.8

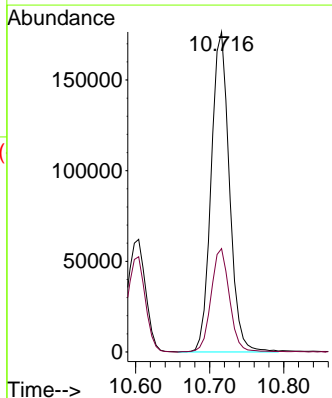
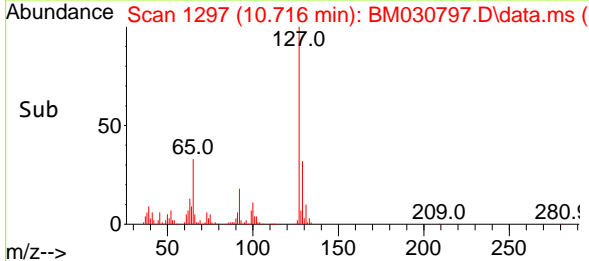
**Manual Integrations**  
**APPROVED**  
 mohammad  
 7/6/2021 9:25:36 AM

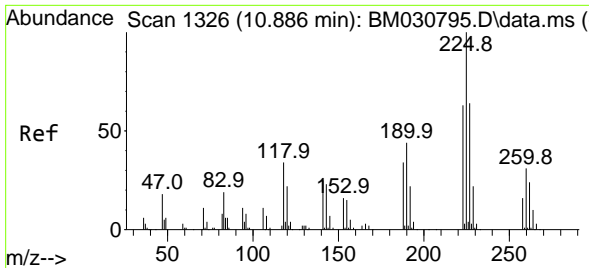


#32  
 4-Chloroaniline  
 Concen: 30.85 ng/ul  
 RT: 10.716 min Scan# 1297  
 Delta R.T. 0.000 min  
 Lab File: BM030797.D  
 Acq: 03 Jul 2021 05:36



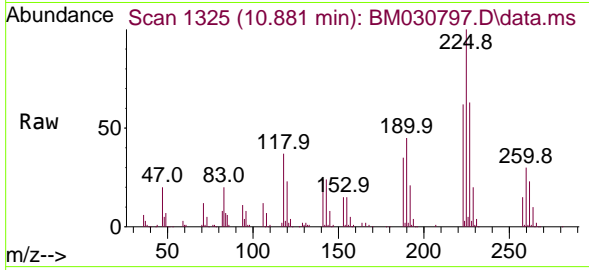
Tgt Ion:127 Resp: 301703  
 Ion Ratio Lower Upper  
 127 100  
 129 32.3 25.6 38.4





#33  
 Hexachlorobutadiene  
 Concen: 35.43 ng/ul  
 RT: 10.881 min Scan# 1325  
 Delta R.T. -0.006 min  
 Lab File: BM030797.D  
 Acq: 03 Jul 2021 05:36

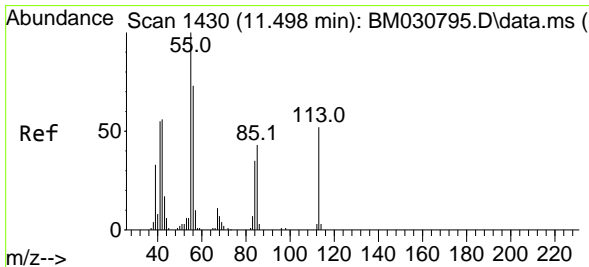
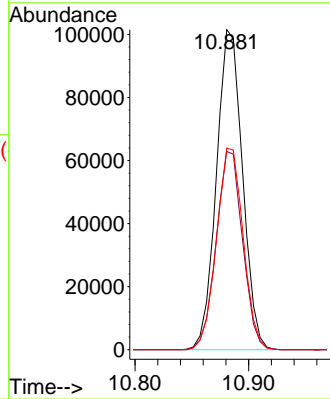
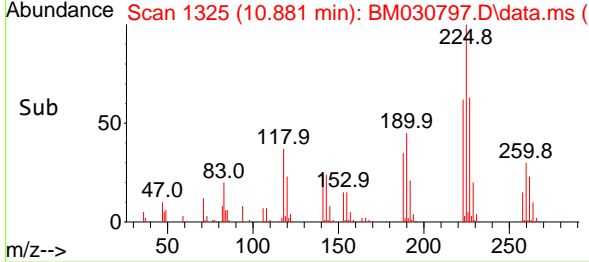
Instrument :  
 BNA\_M  
 ClientSampled :  
 SLCS473



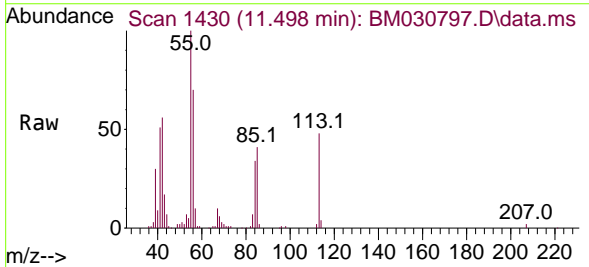
Tgt Ion:225 Resp: 162099  
 Ion Ratio Lower Upper  
 225 100  
 223 62.0 50.7 76.1  
 227 63.0 50.7 76.1

Manual Integrations  
 APPROVED

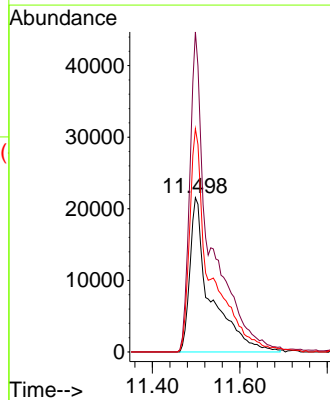
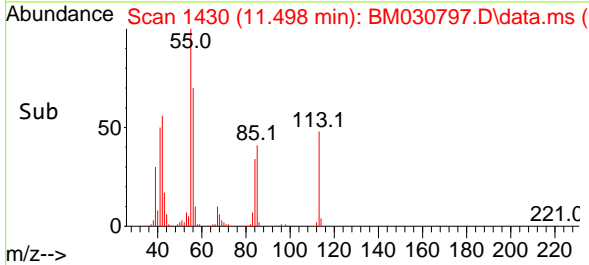
mohammad  
 7/6/2021 9:25:36 AM

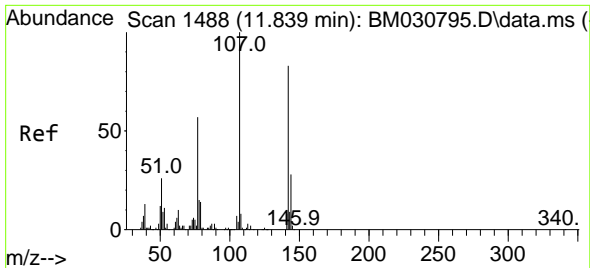


#34  
 Caprolactam  
 Concen: 36.01 ng/ul  
 RT: 11.498 min Scan# 1430  
 Delta R.T. 0.000 min  
 Lab File: BM030797.D  
 Acq: 03 Jul 2021 05:36



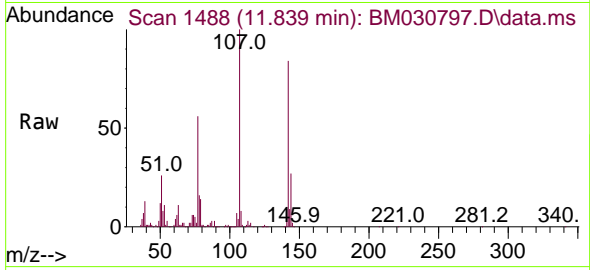
Tgt Ion:113 Resp: 70717  
 Ion Ratio Lower Upper  
 113 100  
 55 207.4 155.2 232.8  
 56 144.7 101.9 152.9





#35  
 4-Chloro-3-methylphenol  
 Concen: 38.85 ng/ul  
 RT: 11.839 min Scan# 1488  
 Delta R.T. 0.000 min  
 Lab File: BM030797.D  
 Acq: 03 Jul 2021 05:36

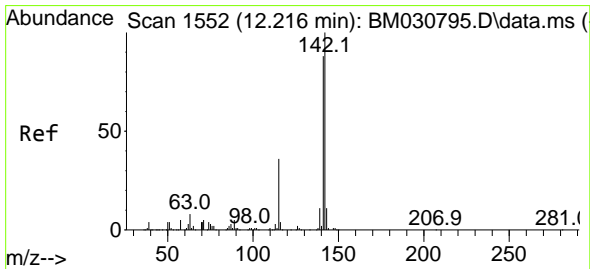
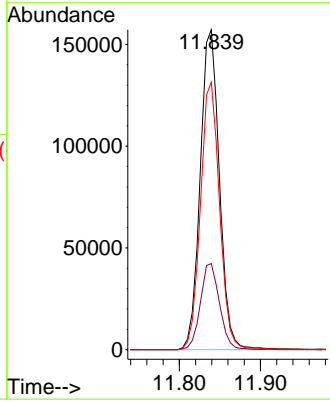
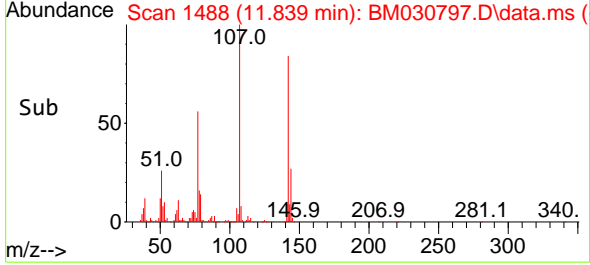
**Instrument :**  
 BNA\_M  
**ClientSampled :**  
 SLCS473



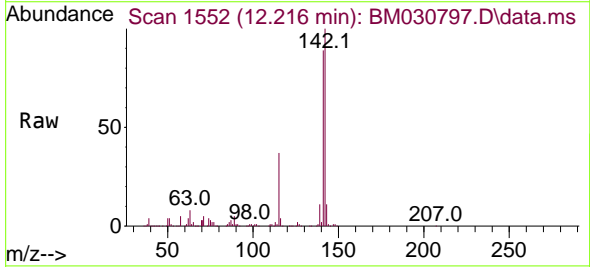
Tgt Ion:107 Resp: 258092

Ion	Ratio	Lower	Upper
107	100		
144	26.9	22.3	33.5
142	83.6	65.6	98.4

**Manual Integrations**  
**APPROVED**  
 mohammad  
 7/6/2021 9:25:36 AM

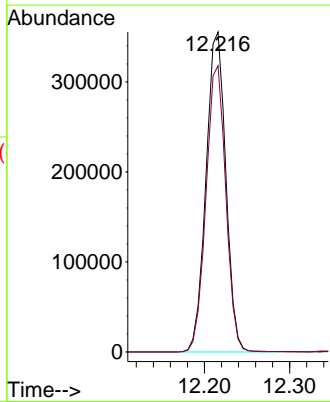
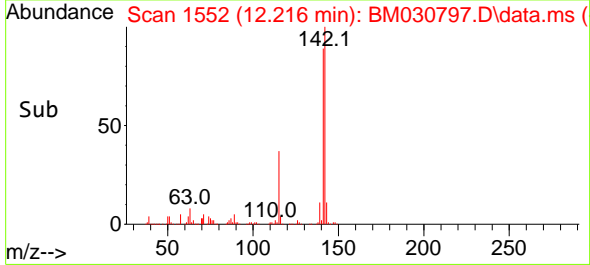


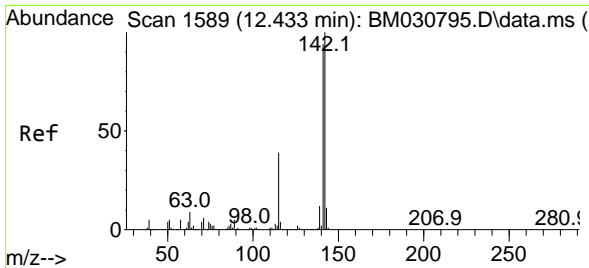
#36  
 2-Methylnaphthalene  
 Concen: 36.54 ng/ul  
 RT: 12.216 min Scan# 1552  
 Delta R.T. 0.000 min  
 Lab File: BM030797.D  
 Acq: 03 Jul 2021 05:36



Tgt Ion:142 Resp: 573914

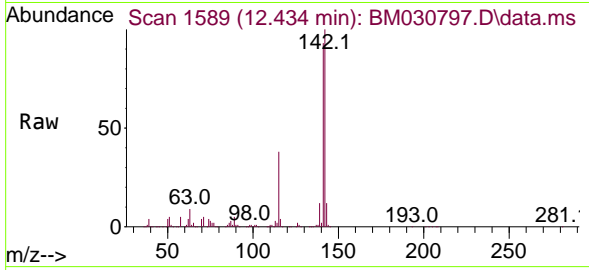
Ion	Ratio	Lower	Upper
142	100		
141	89.5	70.6	105.8





#37  
 1-Methylnaphthalene  
 Concen: 35.28 ng/ul  
 RT: 12.434 min Scan# 1589  
 Delta R.T. -0.006 min  
 Lab File: BM030797.D  
 Acq: 03 Jul 2021 05:36

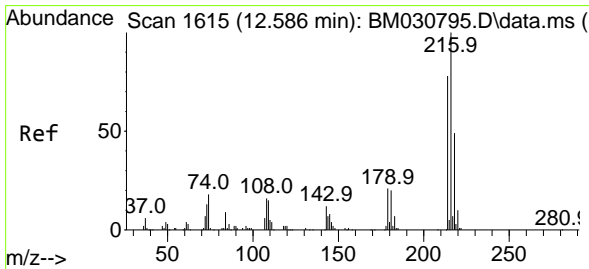
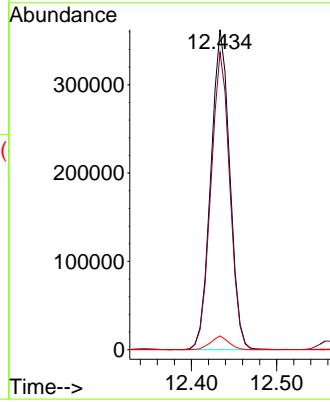
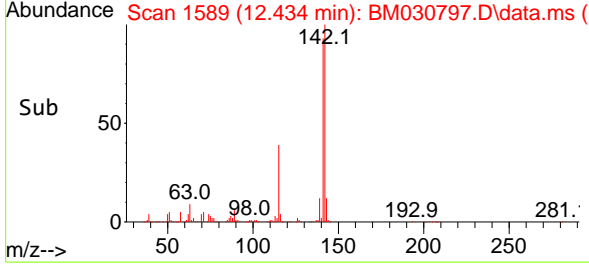
Instrument :  
 BNA\_M  
 ClientSampled :  
 SLCS473



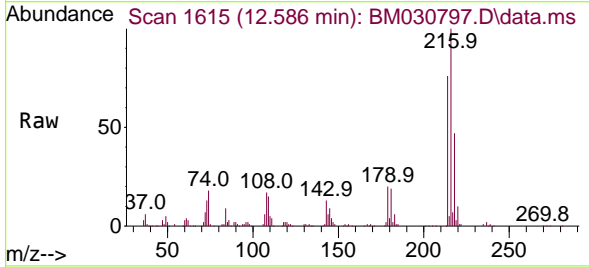
Tgt Ion:142 Resp: 560976  
 Ion Ratio Lower Upper  
 142 100  
 141 93.0 72.8 109.2  
 116 4.3 3.1 4.7

Manual Integrations  
 APPROVED

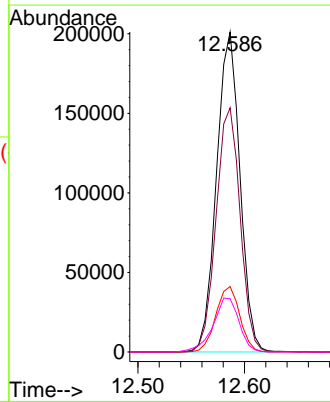
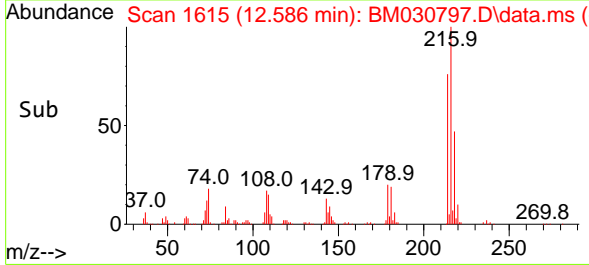
mohammad  
 7/6/2021 9:25:36 AM



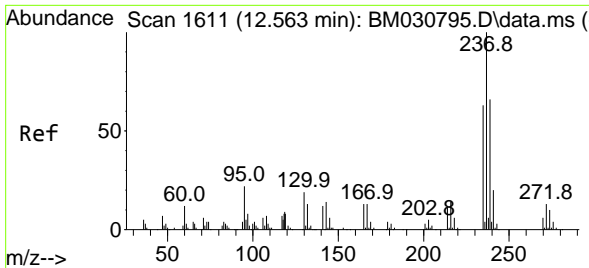
#39  
 1,2,4,5-Tetrachlorobenzene  
 Concen: 38.13 ng/ul  
 RT: 12.586 min Scan# 1615  
 Delta R.T. 0.000 min  
 Lab File: BM030797.D  
 Acq: 03 Jul 2021 05:36



Tgt Ion:216 Resp: 306853  
 Ion Ratio Lower Upper  
 216 100  
 214 76.3 62.2 93.4  
 179 20.4 16.6 24.8  
 108 16.7 13.5 20.3

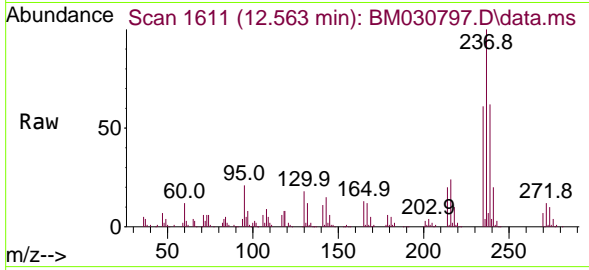






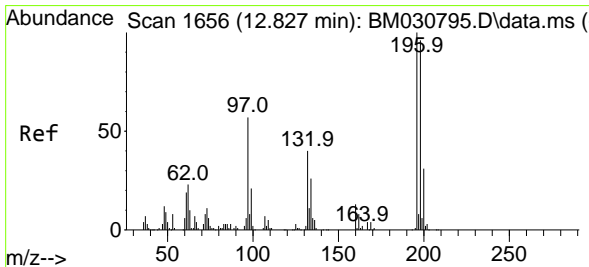
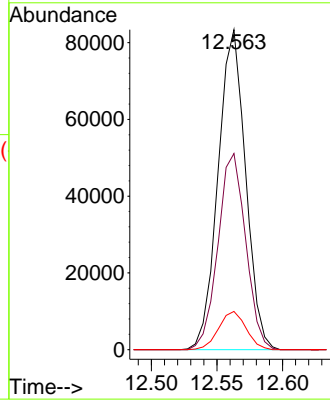
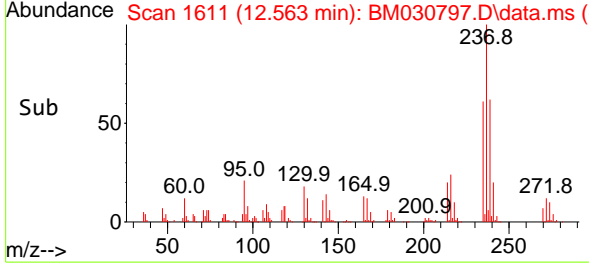
#40  
 Hexachlorocyclopentadiene  
 Concen: 23.16 ng/ul  
 RT: 12.563 min Scan# 1611  
 Delta R.T. -0.006 min  
 Lab File: BM030797.D  
 Acq: 03 Jul 2021 05:36

**Instrument :**  
 BNA\_M  
**ClientSampled :**  
 SLCS473

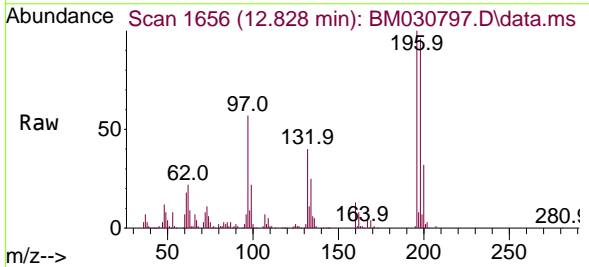


Tgt Ion:237 Resp: 121617  
 Ion Ratio Lower Upper  
 237 100  
 235 61.3 49.0 73.4  
 272 11.9 11.0 16.4

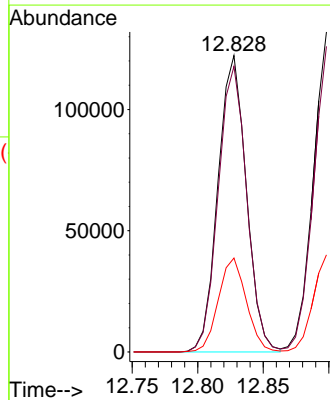
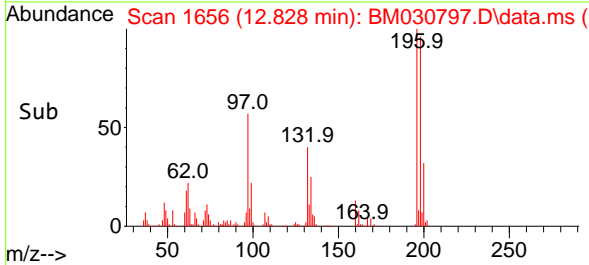
**Manual Integrations**  
**APPROVED**  
 mohammad  
 7/6/2021 9:25:36 AM

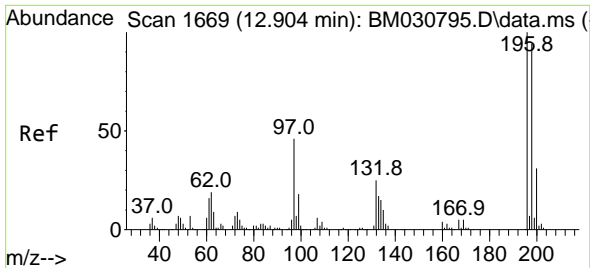


#41  
 2,4,6-Trichlorophenol  
 Concen: 36.28 ng/ul  
 RT: 12.828 min Scan# 1656  
 Delta R.T. -0.006 min  
 Lab File: BM030797.D  
 Acq: 03 Jul 2021 05:36



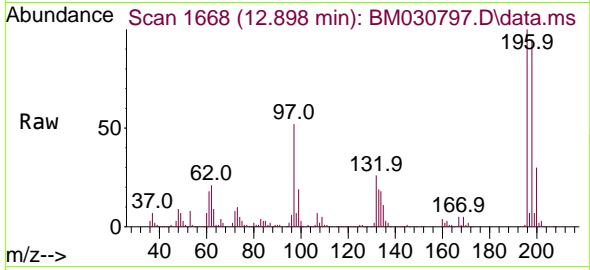
Tgt Ion:196 Resp: 183884  
 Ion Ratio Lower Upper  
 196 100  
 198 96.3 78.8 118.2  
 200 31.7 26.0 39.0





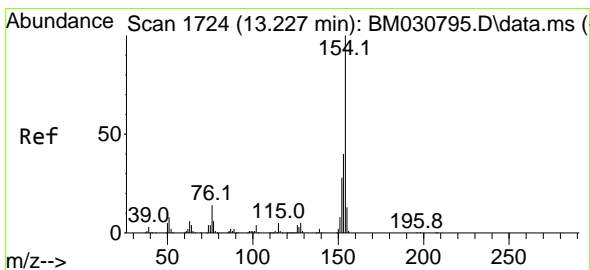
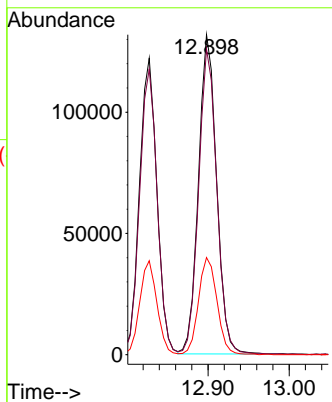
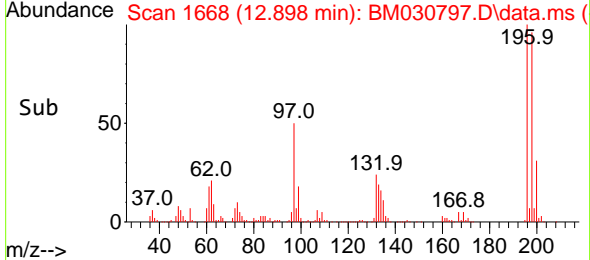
#42  
 2,4,5-Trichlorophenol  
 Concen: 37.82 ng/ul  
 RT: 12.898 min Scan# 1668  
 Delta R.T. -0.006 min  
 Lab File: BM030797.D  
 Acq: 03 Jul 2021 05:36

**Instrument :**  
 BNA\_M  
**ClientSampled :**  
 SLCS473

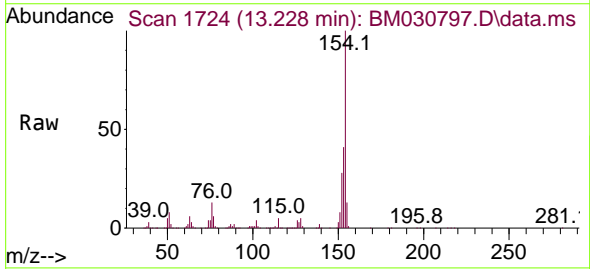


Tgt Ion:196 Resp: 204553  
 Ion Ratio Lower Upper  
 196 100  
 198 95.5 76.1 114.1  
 200 30.4 25.4 38.2

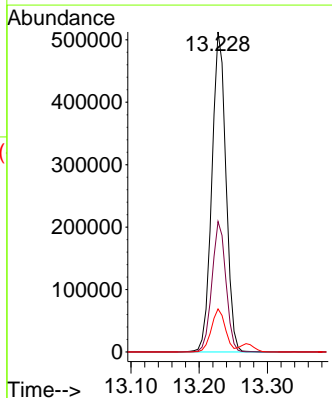
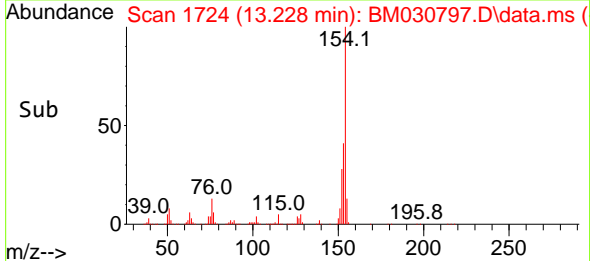
**Manual Integrations**  
**APPROVED**  
 mohammad  
 7/6/2021 9:25:36 AM

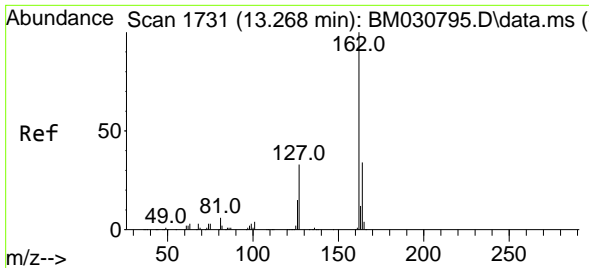


#43  
 1,1'-Biphenyl  
 Concen: 38.73 ng/ul  
 RT: 13.228 min Scan# 1724  
 Delta R.T. -0.006 min  
 Lab File: BM030797.D  
 Acq: 03 Jul 2021 05:36



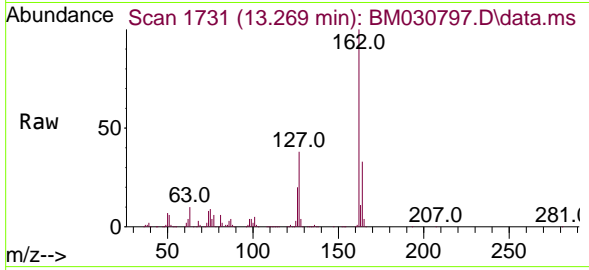
Tgt Ion:154 Resp: 737241  
 Ion Ratio Lower Upper  
 154 100  
 153 40.8 32.3 48.5  
 76 13.5 10.6 15.8





#44  
 2-Chloronaphthalene  
 Concen: 38.68 ng/ul  
 RT: 13.269 min Scan# 1731  
 Delta R.T. -0.006 min  
 Lab File: BM030797.D  
 Acq: 03 Jul 2021 05:36

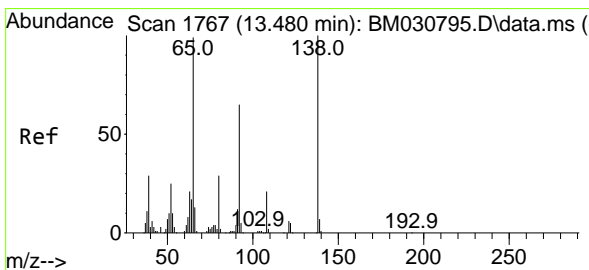
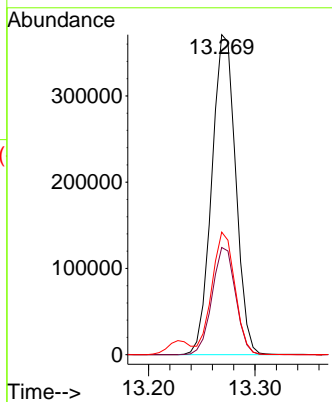
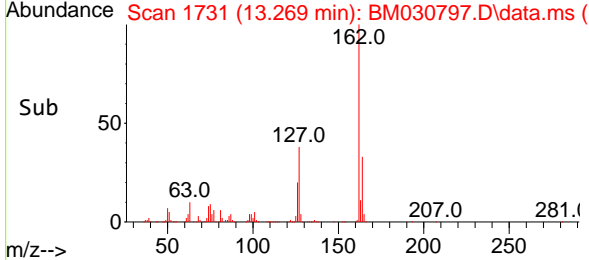
**Instrument :**  
 BNA\_M  
**ClientSampled :**  
 SLCS473



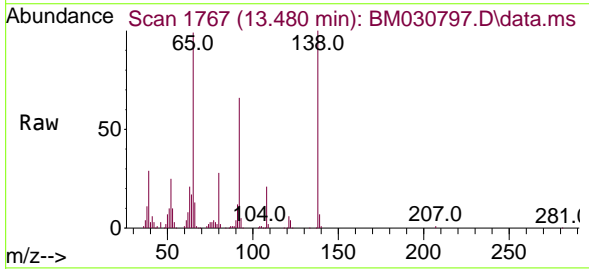
Tgt Ion:162 Resp: 578912

Ion	Ratio	Lower	Upper
162	100		
164	33.5	26.2	39.4
127	38.3	29.4	44.0

**Manual Integrations**  
**APPROVED**  
 mohammad  
 7/6/2021 9:25:36 AM

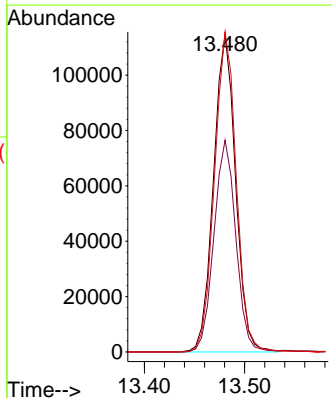
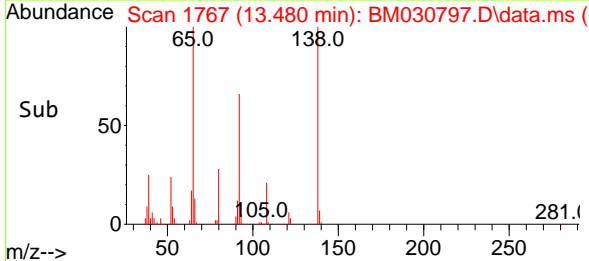


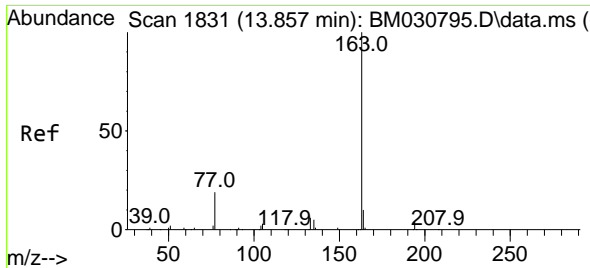
#45  
 2-Nitroaniline  
 Concen: 43.53 ng/ul  
 RT: 13.480 min Scan# 1767  
 Delta R.T. 0.000 min  
 Lab File: BM030797.D  
 Acq: 03 Jul 2021 05:36



Tgt Ion: 65 Resp: 175073

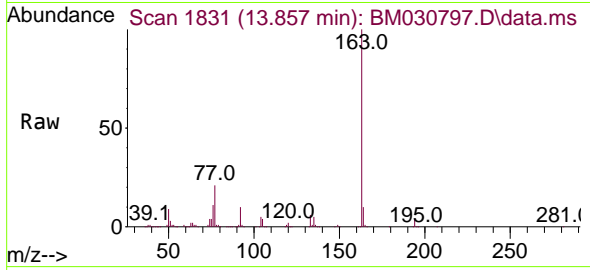
Ion	Ratio	Lower	Upper
65	100		
92	66.6	53.9	80.9
138	100.7	83.3	124.9





#47  
 Dimethylphthalate  
 Concen: 40.30 ng/ul  
 RT: 13.857 min Scan# 1831  
 Delta R.T. 0.000 min  
 Lab File: BM030797.D  
 Acq: 03 Jul 2021 05:36

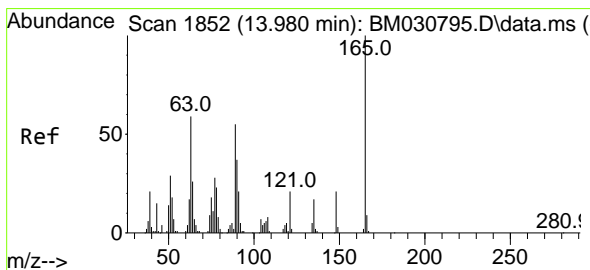
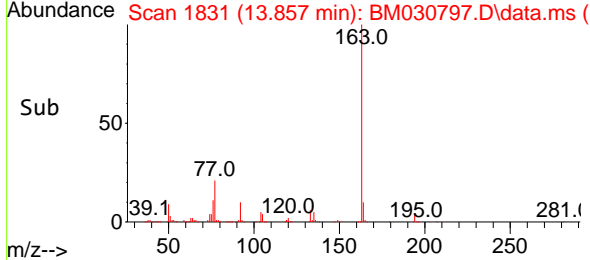
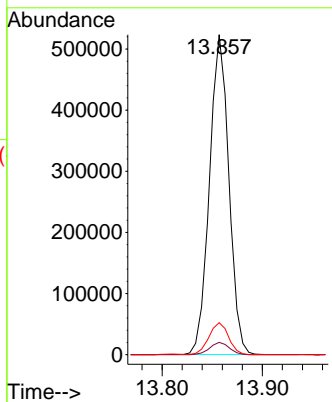
**Instrument :**  
 BNA\_M  
**ClientSampled :**  
 SLCS473



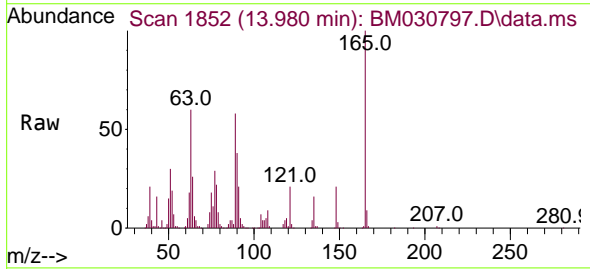
Tgt Ion:163 Resp: 703169

Ion	Ratio	Lower	Upper
163	100		
194	3.8	3.2	4.8
164	10.0	8.2	12.4

**Manual Integrations**  
**APPROVED**  
 mohammad  
 7/6/2021 9:25:36 AM

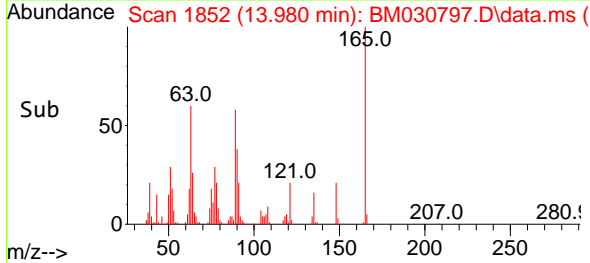
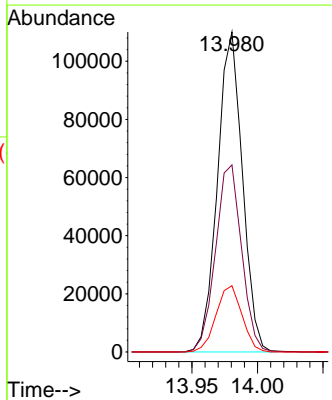


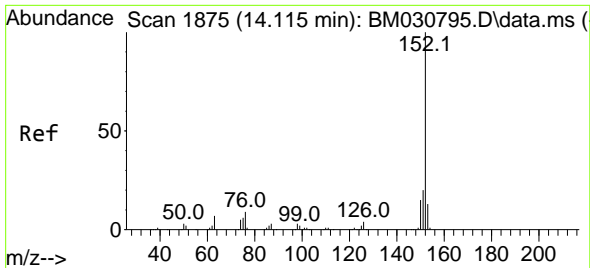
#48  
 2,6-Dinitrotoluene  
 Concen: 43.37 ng/ul  
 RT: 13.980 min Scan# 1852  
 Delta R.T. 0.000 min  
 Lab File: BM030797.D  
 Acq: 03 Jul 2021 05:36



Tgt Ion:165 Resp: 145801

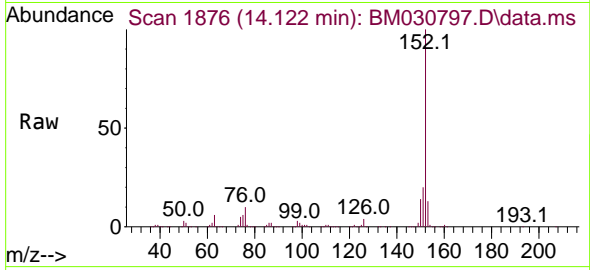
Ion	Ratio	Lower	Upper
165	100		
89	58.5	48.6	72.8
121	20.7	18.1	27.1





#50  
 Acenaphthylene  
 Concen: 39.22 ng/ul  
 RT: 14.122 min Scan# 1876  
 Delta R.T. 0.000 min  
 Lab File: BM030797.D  
 Acq: 03 Jul 2021 05:36

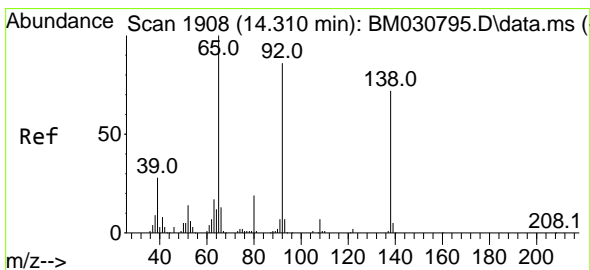
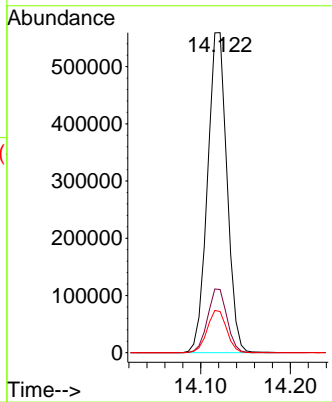
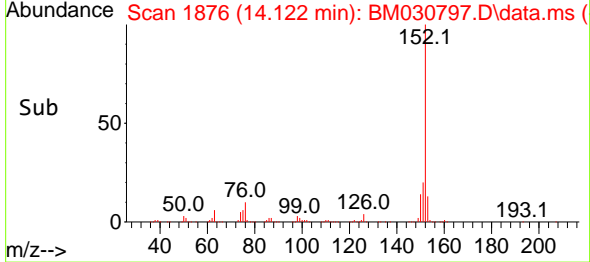
**Instrument :**  
 BNA\_M  
**ClientSampled :**  
 SLCS473



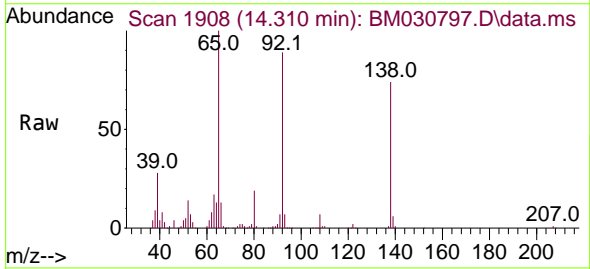
Tgt Ion:152 Resp: 841065

Ion	Ratio	Lower	Upper
152	100		
151	19.8	16.2	24.2
153	12.8	10.2	15.4

**Manual Integrations**  
**APPROVED**  
 mohammad  
 7/6/2021 9:25:36 AM

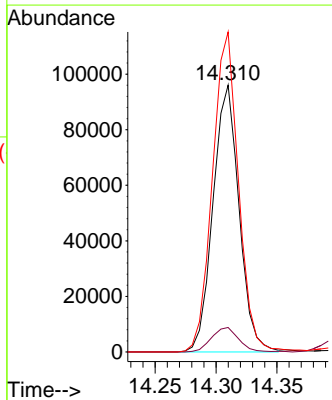
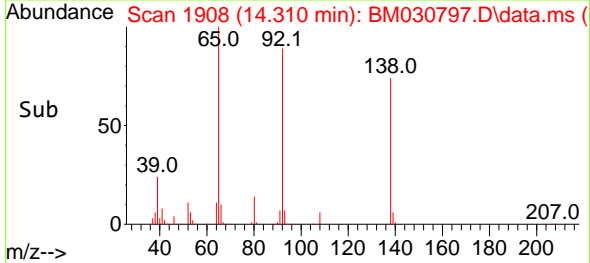


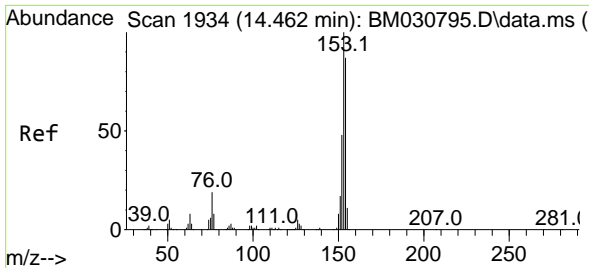
#51  
 3-Nitroaniline  
 Concen: 39.98 ng/ul  
 RT: 14.310 min Scan# 1908  
 Delta R.T. 0.000 min  
 Lab File: BM030797.D  
 Acq: 03 Jul 2021 05:36



Tgt Ion:138 Resp: 143191

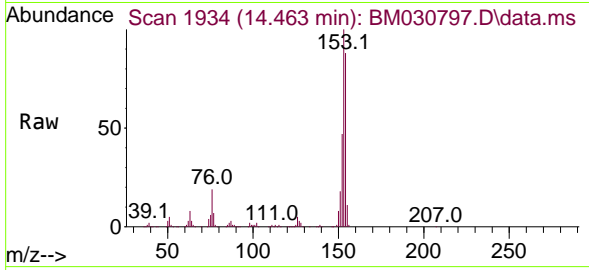
Ion	Ratio	Lower	Upper
138	100		
108	9.2	7.4	11.2
92	119.9	96.5	144.7





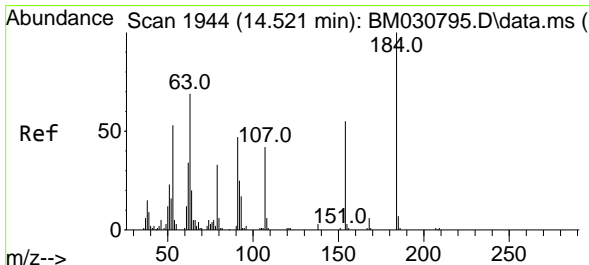
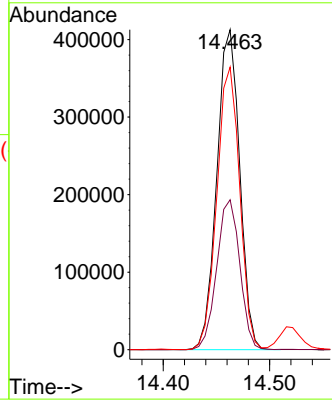
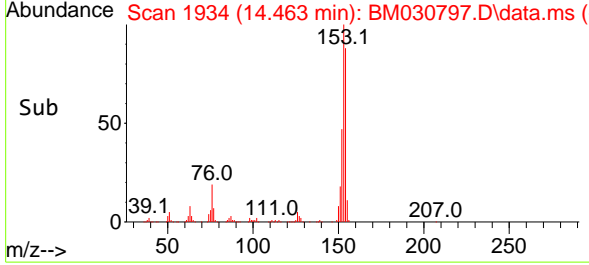
#52  
 Acenaphthene  
 Concen: 39.51 ng/uI  
 RT: 14.463 min Scan# 1934  
 Delta R.T. 0.000 min  
 Lab File: BM030797.D  
 Acq: 03 Jul 2021 05:36

**Instrument :**  
 BNA\_M  
**ClientSampled :**  
 SLCS473

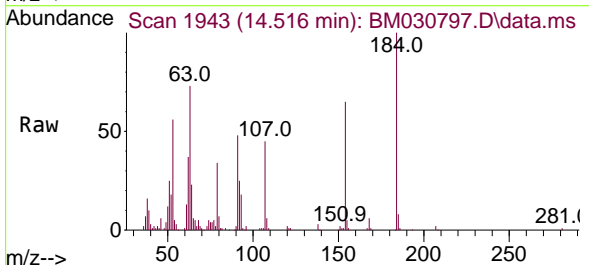


Tgt Ion:153 Resp: 614828  
 Ion Ratio Lower Upper  
 153 100  
 152 46.9 37.4 56.2  
 154 88.3 69.4 104.0

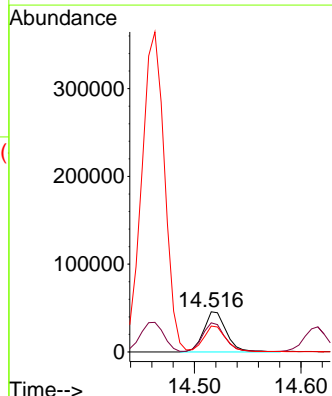
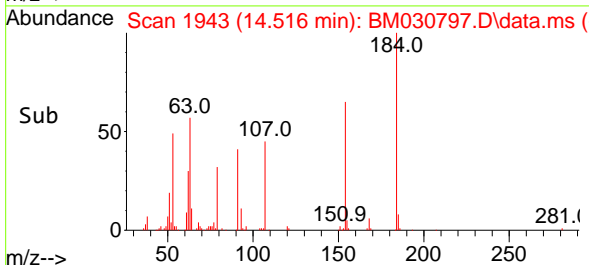
**Manual Integrations**  
**APPROVED**  
 mohammad  
 7/6/2021 9:25:36 AM

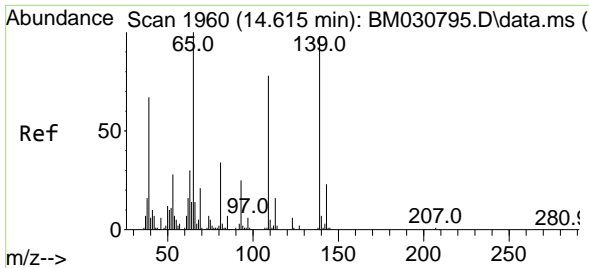


#53  
 2,4-Dinitrophenol  
 Concen: 30.75 ng/uI  
 RT: 14.516 min Scan# 1943  
 Delta R.T. -0.006 min  
 Lab File: BM030797.D  
 Acq: 03 Jul 2021 05:36



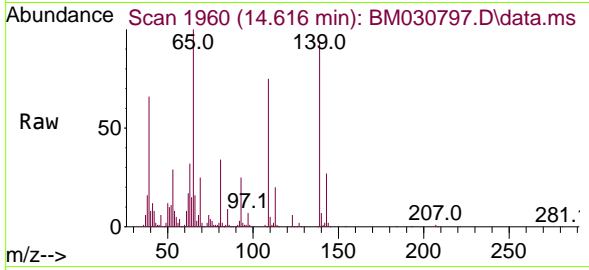
Tgt Ion:184 Resp: 67966  
 Ion Ratio Lower Upper  
 184 100  
 63 72.6 56.9 85.3  
 154 64.6 49.0 73.6





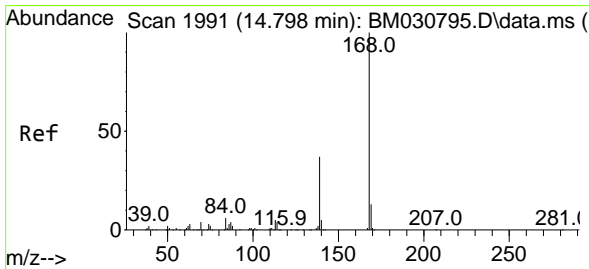
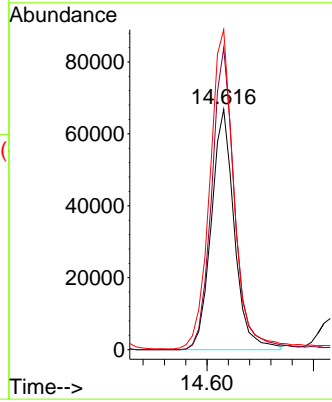
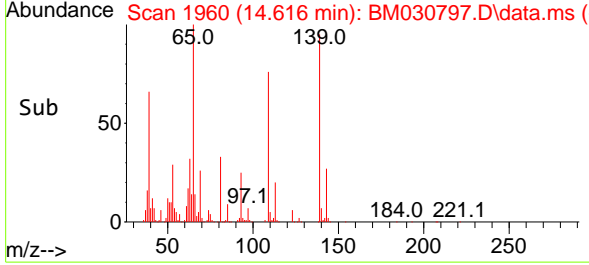
#55  
 4-Nitrophenol  
 Concen: 37.09 ng/ul  
 RT: 14.616 min Scan# 1960  
 Delta R.T. 0.000 min  
 Lab File: BM030797.D  
 Acq: 03 Jul 2021 05:36

**Instrument :**  
 BNA\_M  
**ClientSampled :**  
 SLCS473

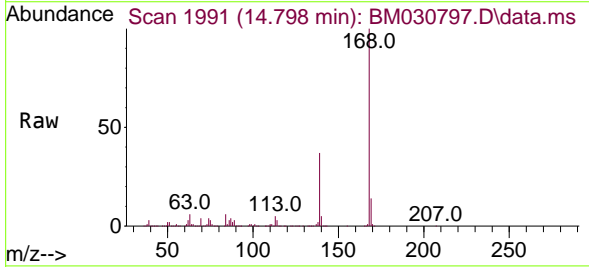


Tgt Ion:109 Resp: 100110  
 Ion Ratio Lower Upper  
 109 100  
 139 125.6 100.3 150.5  
 65 133.2 104.6 156.8

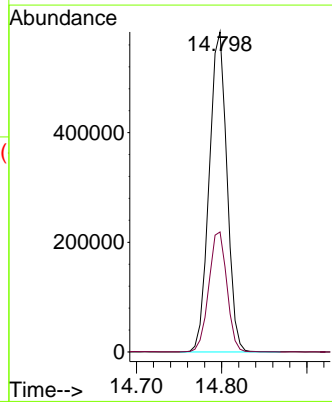
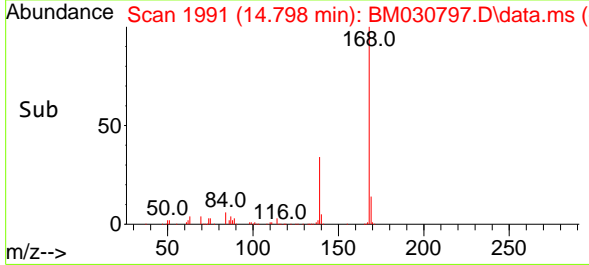
**Manual Integrations**  
**APPROVED**  
 mohammad  
 7/6/2021 9:25:36 AM

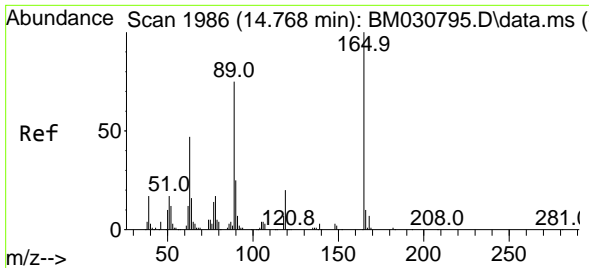


#56  
 Dibenzofuran  
 Concen: 38.91 ng/ul  
 RT: 14.798 min Scan# 1991  
 Delta R.T. 0.000 min  
 Lab File: BM030797.D  
 Acq: 03 Jul 2021 05:36



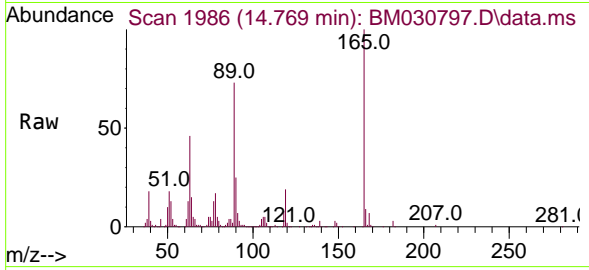
Tgt Ion:168 Resp: 844028  
 Ion Ratio Lower Upper  
 168 100  
 139 37.5 29.5 44.3





#57  
 2,4-Dinitrotoluene  
 Concen: 42.96 ng/ul  
 RT: 14.769 min Scan# 1986  
 Delta R.T. 0.000 min  
 Lab File: BM030797.D  
 Acq: 03 Jul 2021 05:36

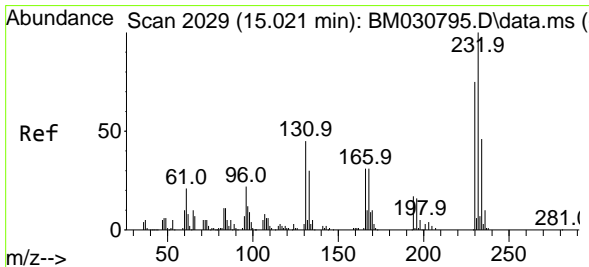
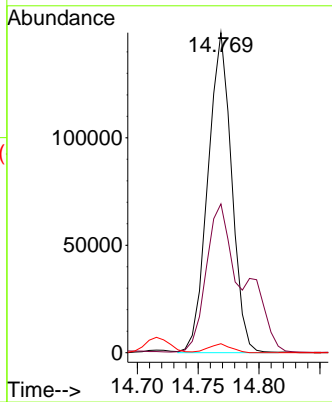
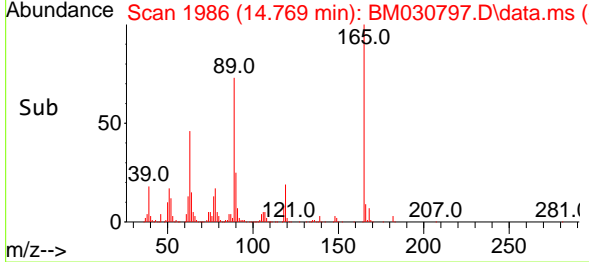
**Instrument :**  
 BNA\_M  
**ClientSampled :**  
 SLCS473



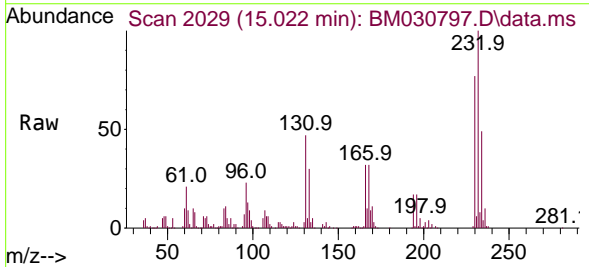
Tgt Ion:165 Resp: 202232

Ion	Ratio	Lower	Upper
165	100		
63	46.5	37.6	56.4
182	2.8	1.8	2.8#

**Manual Integrations**  
**APPROVED**  
 mohammad  
 7/6/2021 9:25:36 AM

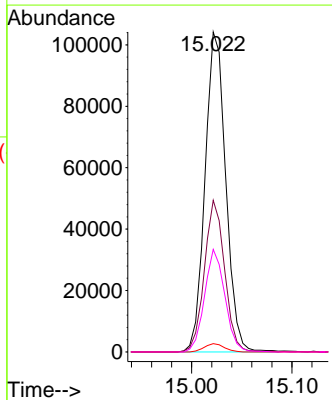
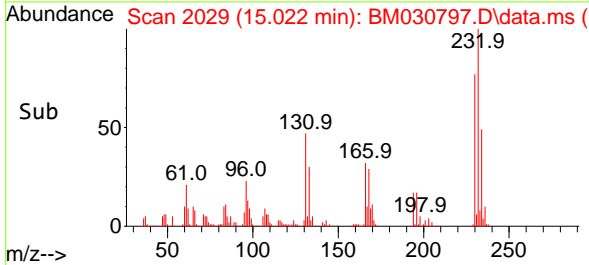


#58  
 2,3,4,6-Tetrachlorophenol  
 Concen: 34.28 ng/ul  
 RT: 15.022 min Scan# 2029  
 Delta R.T. -0.006 min  
 Lab File: BM030797.D  
 Acq: 03 Jul 2021 05:36

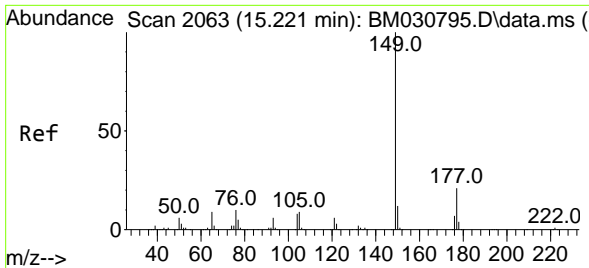


Tgt Ion:232 Resp: 150078

Ion	Ratio	Lower	Upper
232	100		
131	47.4	35.0	52.6
130	2.6	1.7	2.5#
166	32.0	24.4	36.6

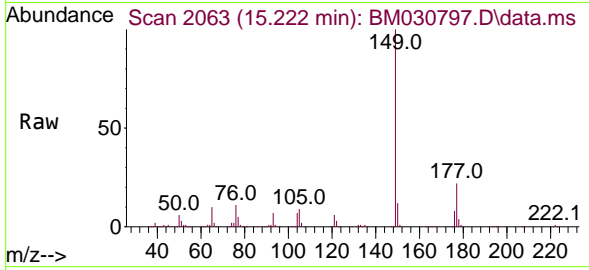






#59  
 Diethylphthalate  
 Concen: 41.05 ng/ul  
 RT: 15.222 min Scan# 2063  
 Delta R.T. 0.000 min  
 Lab File: BM030797.D  
 Acq: 03 Jul 2021 05:36

Instrument :  
 BNA\_M  
 ClientSampled :  
 SLCS473

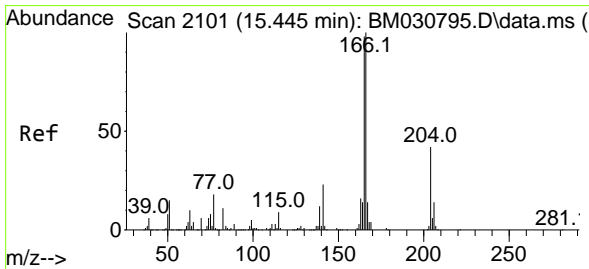
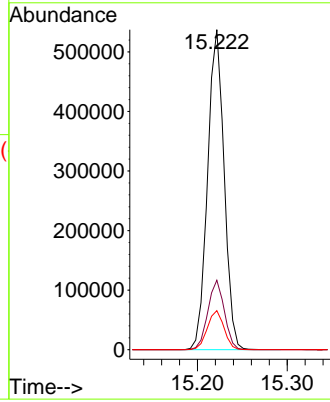
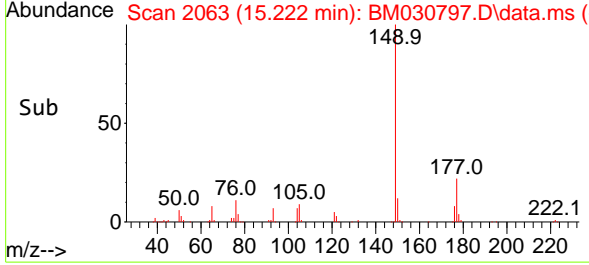


Tgt Ion:149 Resp: 688041

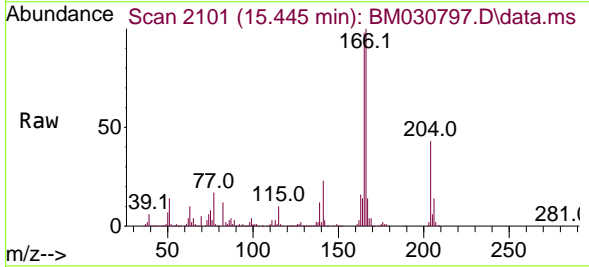
Ion	Ratio	Lower	Upper
149	100		
177	21.7	17.0	25.4
150	12.2	9.9	14.9

Manual Integrations  
 APPROVED

mohammad  
 7/6/2021 9:25:36 AM

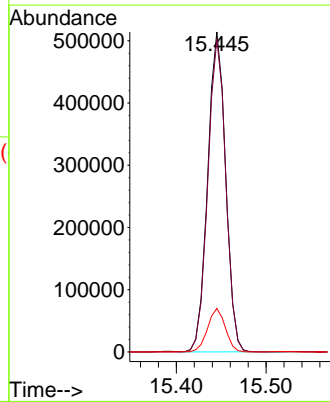
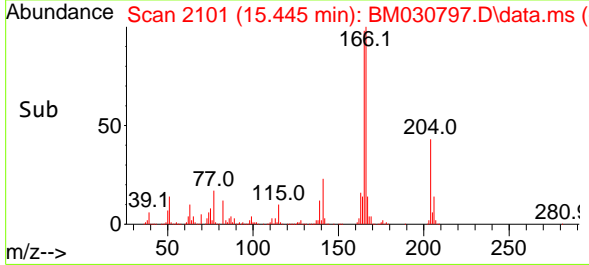


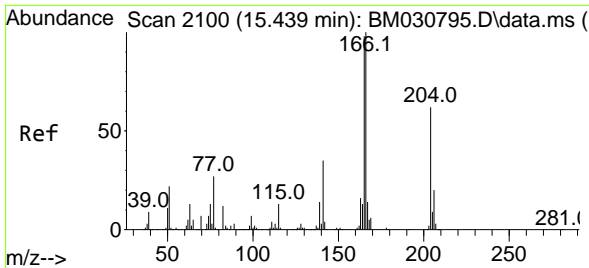
#61  
 Fluorene  
 Concen: 39.95 ng/ul  
 RT: 15.445 min Scan# 2101  
 Delta R.T. 0.000 min  
 Lab File: BM030797.D  
 Acq: 03 Jul 2021 05:36



Tgt Ion:166 Resp: 714220

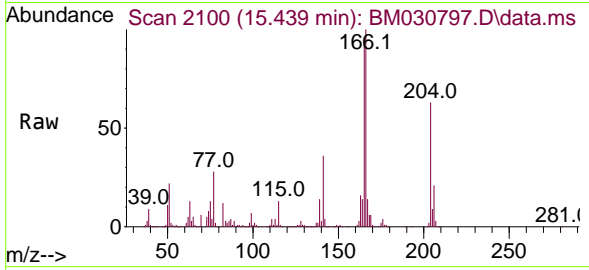
Ion	Ratio	Lower	Upper
166	100		
165	97.8	78.4	117.6
167	13.6	10.6	15.8





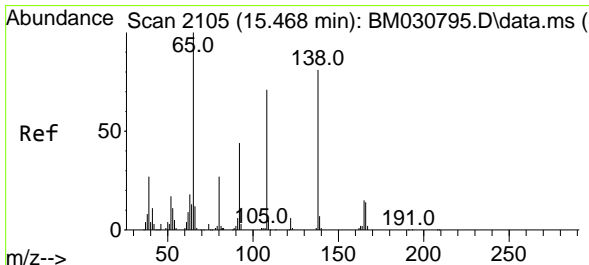
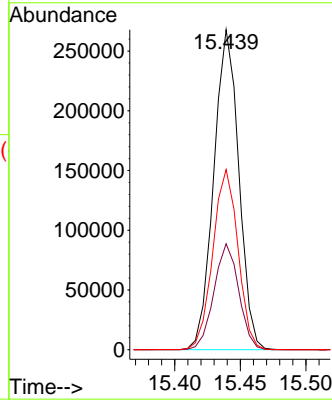
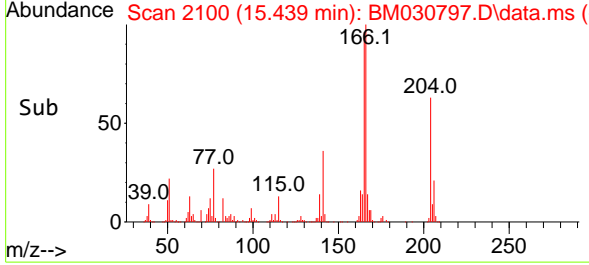
#62  
 4-Chlorophenyl-phenylether  
 Concen: 39.91 ng/ul  
 RT: 15.439 min Scan# 2100  
 Delta R.T. 0.000 min  
 Lab File: BM030797.D  
 Acq: 03 Jul 2021 05:36

**Instrument :**  
 BNA\_M  
**ClientSampled :**  
 SLCS473

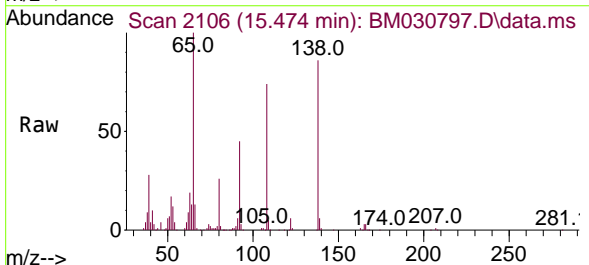


Tgt Ion:204 Resp: 355337  
 Ion Ratio Lower Upper  
 204 100  
 206 33.1 26.0 39.0  
 141 56.3 45.6 68.4

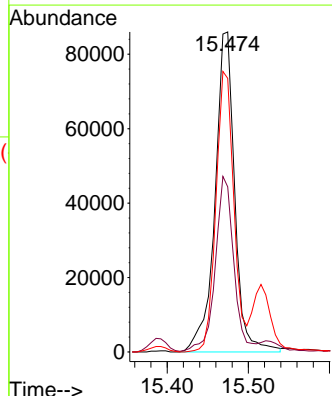
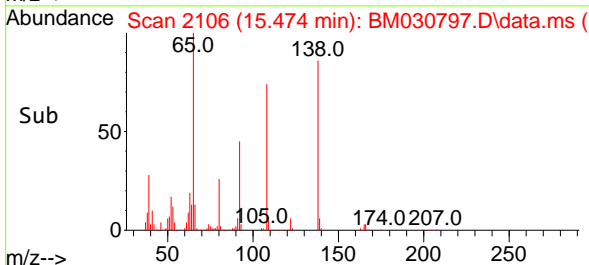
**Manual Integrations**  
**APPROVED**  
 mohammad  
 7/6/2021 9:25:36 AM

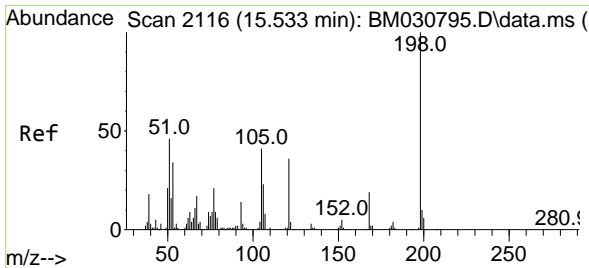


#63  
 4-Nitroaniline  
 Concen: 42.74 ng/ul  
 RT: 15.474 min Scan# 2106  
 Delta R.T. 0.000 min  
 Lab File: BM030797.D  
 Acq: 03 Jul 2021 05:36



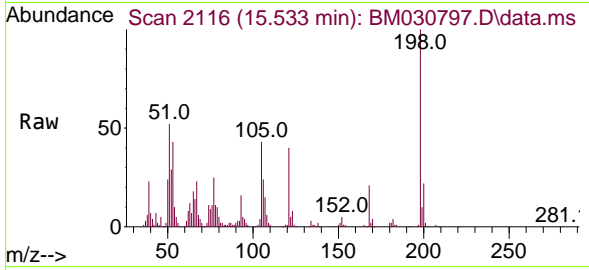
Tgt Ion:138 Resp: 145750  
 Ion Ratio Lower Upper  
 138 100  
 92 51.6 41.5 62.3  
 108 85.5 61.4 92.2





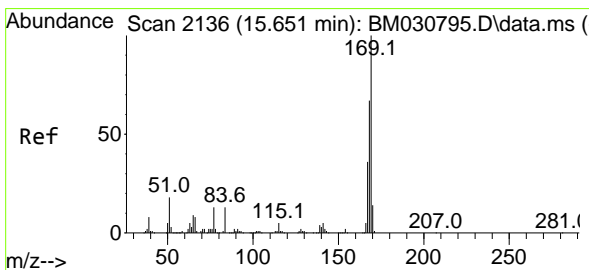
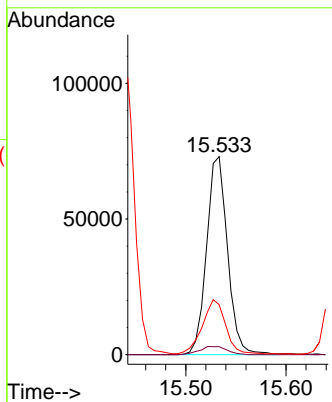
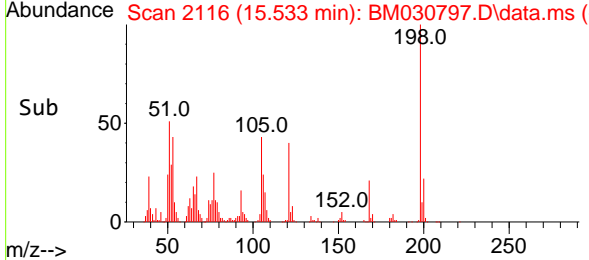
#66  
 4,6-Dinitro-2-methylphenol  
 Concen: 34.55 ng/ul  
 RT: 15.533 min Scan# 2116  
 Delta R.T. 0.000 min  
 Lab File: BM030797.D  
 Acq: 03 Jul 2021 05:36

**Instrument :**  
 BNA\_M  
**ClientSampled :**  
 SLCS473

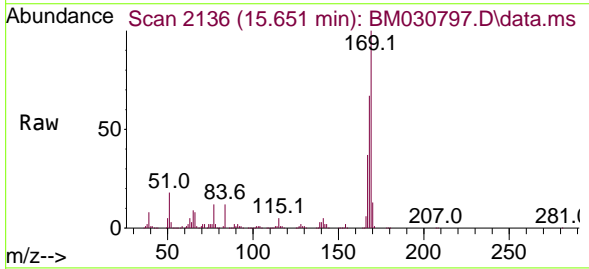


Tgt Ion:198 Resp: 106452  
 Ion Ratio Lower Upper  
 198 100  
 182 4.0 3.8 5.6  
 77 25.2 20.1 30.1

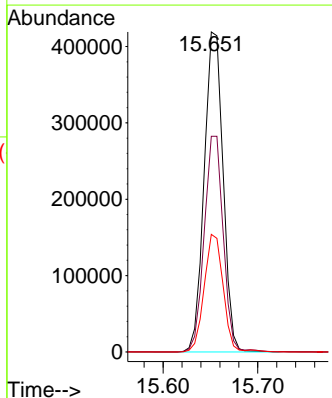
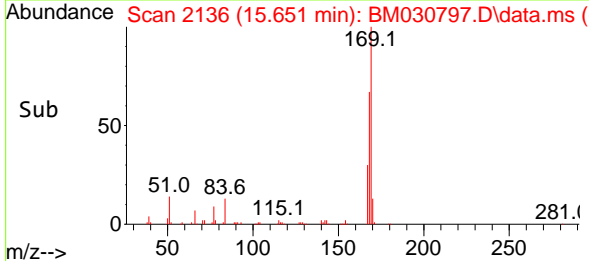
**Manual Integrations**  
**APPROVED**  
 mohammad  
 7/6/2021 9:25:36 AM

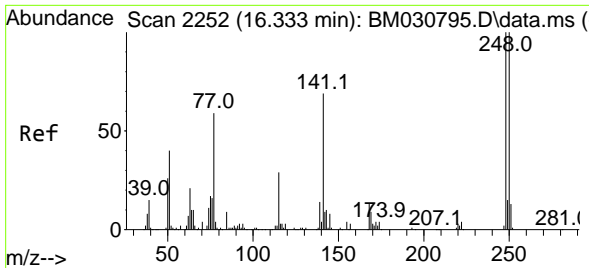


#67  
 N-Nitrosodiphenylamine  
 Concen: 40.24 ng/ul  
 RT: 15.651 min Scan# 2136  
 Delta R.T. -0.006 min  
 Lab File: BM030797.D  
 Acq: 03 Jul 2021 05:36



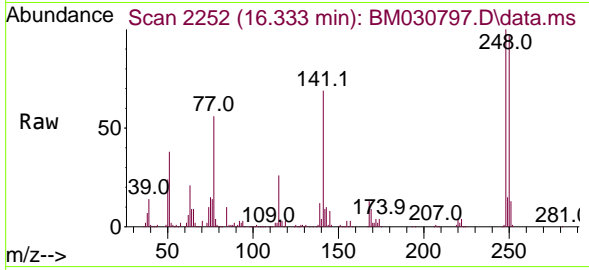
Tgt Ion:169 Resp: 580322  
 Ion Ratio Lower Upper  
 169 100  
 168 67.4 53.8 80.6  
 167 36.8 28.6 43.0





#68  
 4-Bromophenyl-phenylether  
 Concen: 41.51 ng/ul  
 RT: 16.333 min Scan# 2252  
 Delta R.T. 0.000 min  
 Lab File: BM030797.D  
 Acq: 03 Jul 2021 05:36

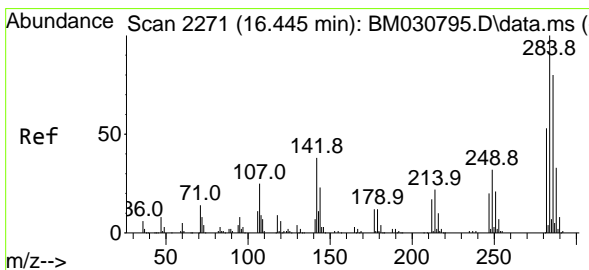
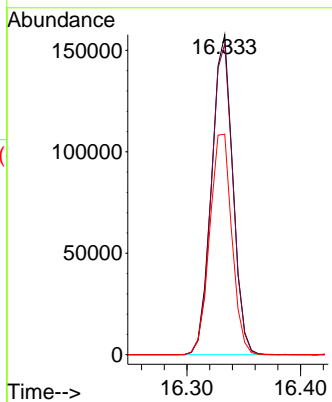
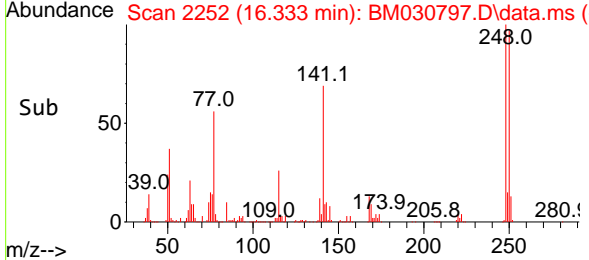
**Instrument :**  
 BNA\_M  
**ClientSampled :**  
 SLCS473



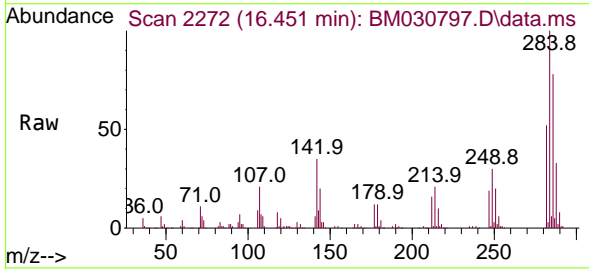
Tgt Ion:248 Resp: 204971

Ion	Ratio	Lower	Upper
248	100		
250	97.2	78.6	118.0
141	68.9	56.2	84.2

**Manual Integrations**  
**APPROVED**  
 mohammad  
 7/6/2021 9:25:36 AM

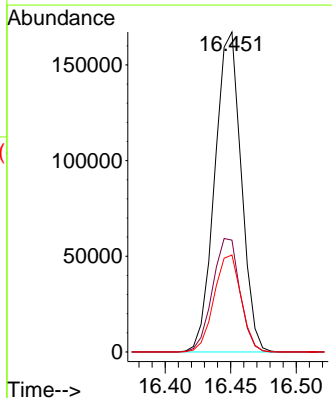
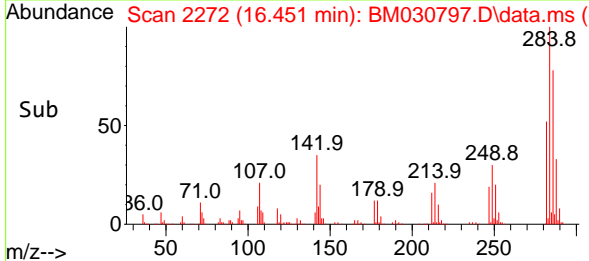


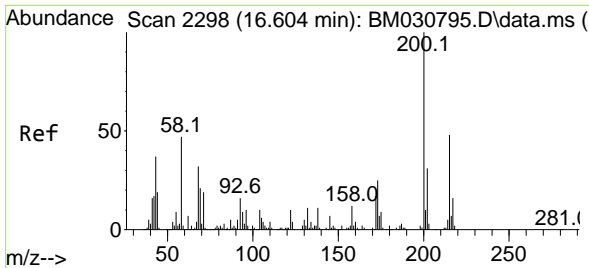
#69  
 Hexachlorobenzene  
 Concen: 41.09 ng/ul  
 RT: 16.451 min Scan# 2272  
 Delta R.T. 0.000 min  
 Lab File: BM030797.D  
 Acq: 03 Jul 2021 05:36



Tgt Ion:284 Resp: 234692

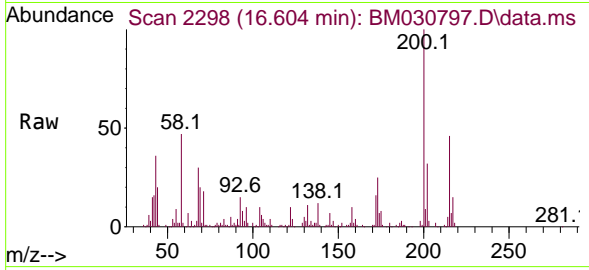
Ion	Ratio	Lower	Upper
284	100		
142	35.0	29.0	43.4
249	30.3	25.0	37.4





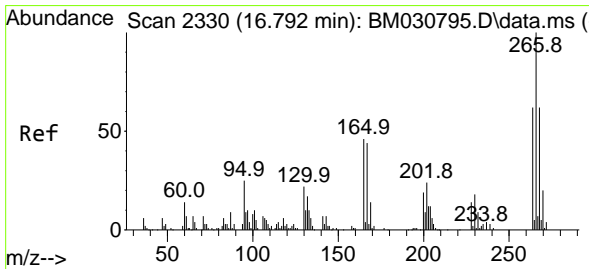
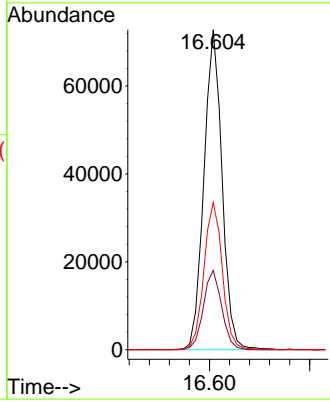
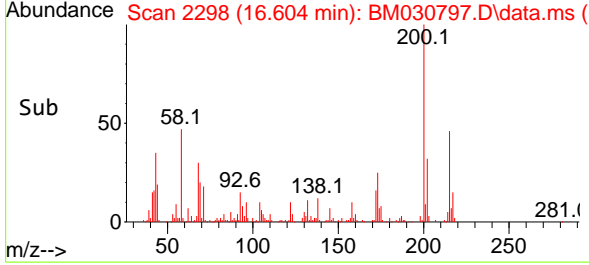
#70  
 Atrazine  
 Concen: 17.90 ng/ul  
 RT: 16.604 min Scan# 2298  
 Delta R.T. 0.000 min  
 Lab File: BM030797.D  
 Acq: 03 Jul 2021 05:36

**Instrument :**  
 BNA\_M  
**ClientSampled :**  
 SLCS473

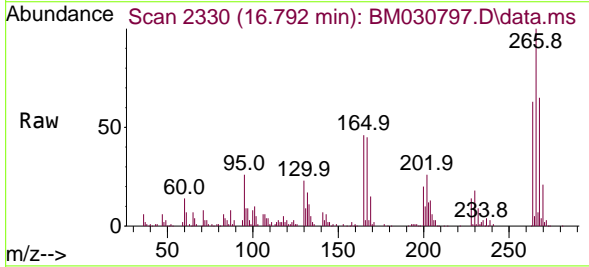


Tgt Ion:200 Resp: 91556  
 Ion Ratio Lower Upper  
 200 100  
 173 24.7 18.7 28.1  
 215 46.0 38.9 58.3

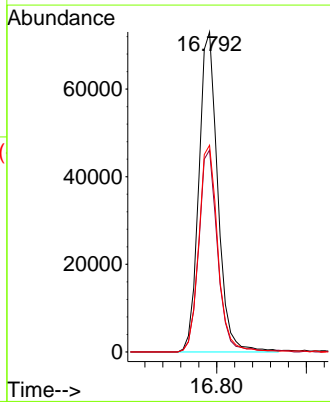
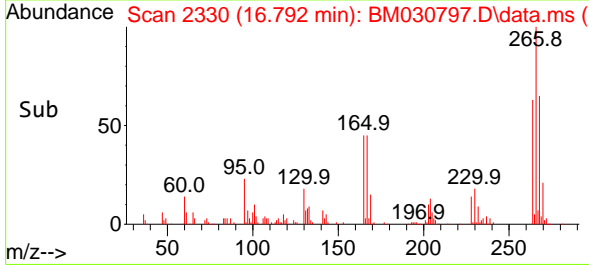
**Manual Integrations**  
**APPROVED**  
 mohammad  
 7/6/2021 9:25:36 AM

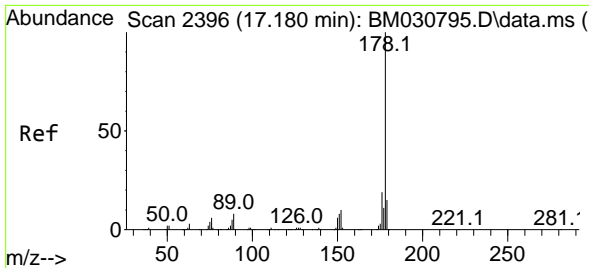


#71  
 Pentachlorophenol  
 Concen: 29.82 ng/ul  
 RT: 16.792 min Scan# 2330  
 Delta R.T. -0.006 min  
 Lab File: BM030797.D  
 Acq: 03 Jul 2021 05:36



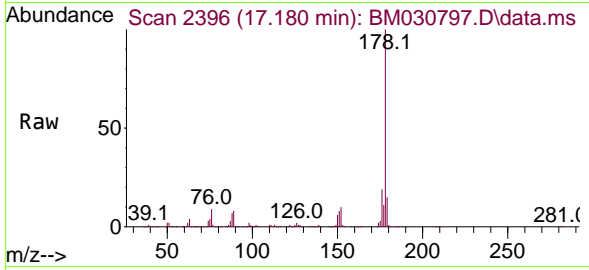
Tgt Ion:266 Resp: 106720  
 Ion Ratio Lower Upper  
 266 100  
 264 63.1 48.2 72.4  
 268 64.6 51.6 77.4





#72  
 Phenanthrene  
 Concen: 39.62 ng/ul  
 RT: 17.180 min Scan# 2396  
 Delta R.T. 0.000 min  
 Lab File: BM030797.D  
 Acq: 03 Jul 2021 05:36

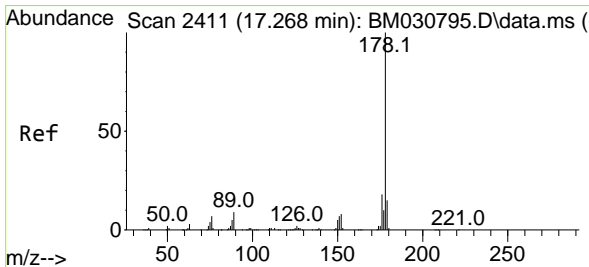
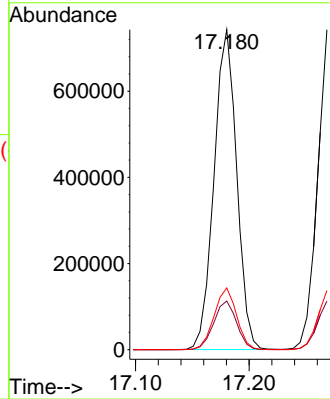
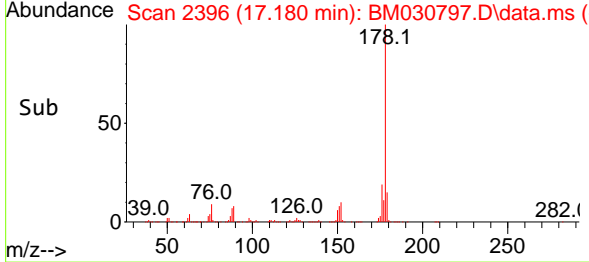
Instrument :  
 BNA\_M  
 ClientSampled :  
 SLCS473



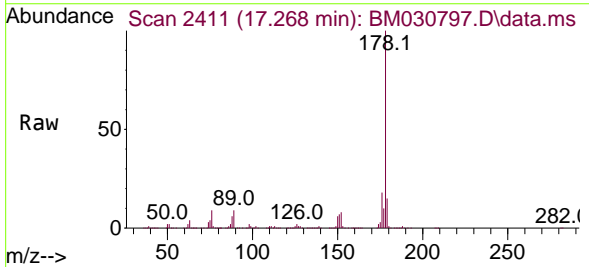
Tgt Ion:178 Resp: 1029515  
 Ion Ratio Lower Upper  
 178 100  
 179 15.2 12.1 18.1  
 176 19.3 15.2 22.8

Manual Integrations  
 APPROVED

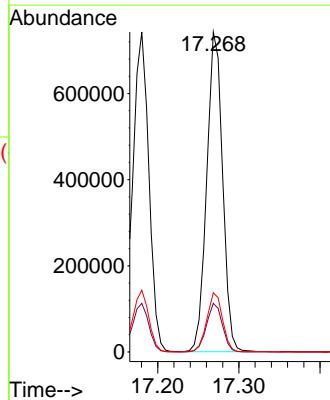
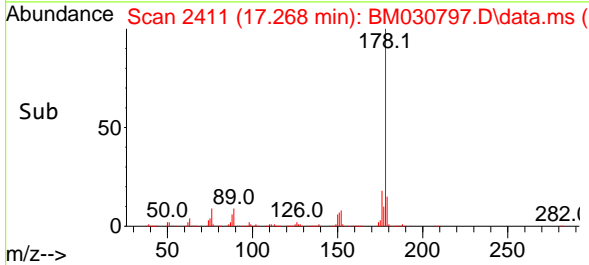
mohammad  
 7/6/2021 9:25:36 AM

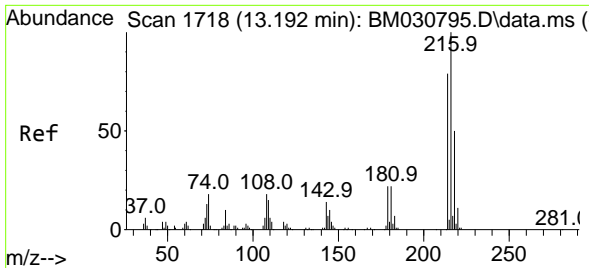


#74  
 Anthracene  
 Concen: 37.85 ng/ul  
 RT: 17.268 min Scan# 2411  
 Delta R.T. -0.006 min  
 Lab File: BM030797.D  
 Acq: 03 Jul 2021 05:36



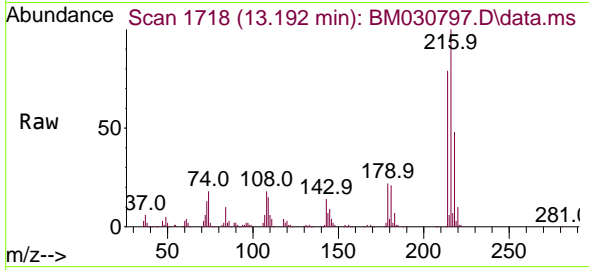
Tgt Ion:178 Resp: 1005778  
 Ion Ratio Lower Upper  
 178 100  
 179 15.2 12.1 18.1  
 176 18.5 15.2 22.8





#75  
 1,2,3,4-Tetrachlorobenzene  
 Concen: 39.60 ng/uL  
 RT: 13.192 min Scan# 1718  
 Delta R.T. -0.006 min  
 Lab File: BM030797.D  
 Acq: 03 Jul 2021 05:36

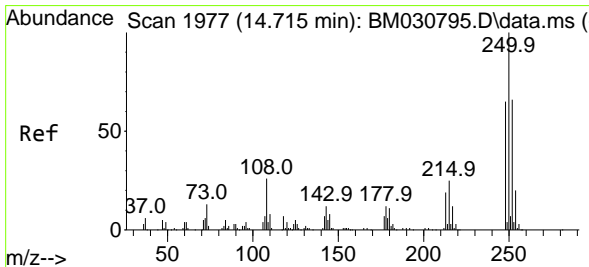
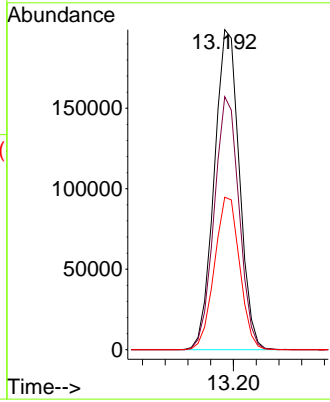
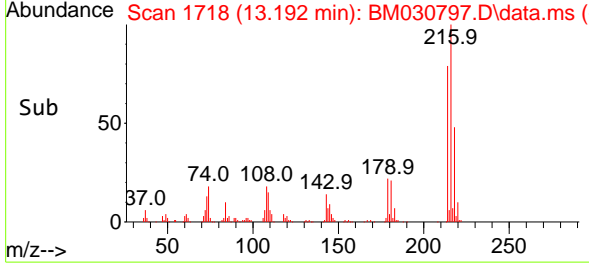
**Instrument :**  
 BNA\_M  
**ClientSampled :**  
 SLCS473



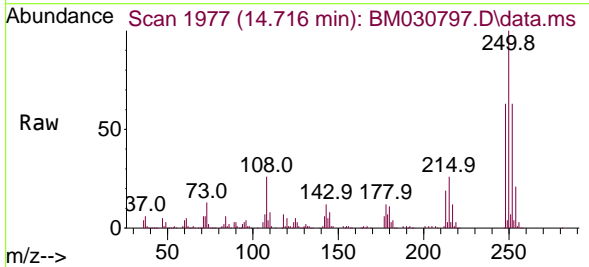
Tgt Ion:216 Resp: 305657

Ion	Ratio	Lower	Upper
216	100		
214	79.0	61.9	92.9
218	47.6	39.5	59.3

**Manual Integrations**  
**APPROVED**  
 mohammad  
 7/6/2021 9:25:36 AM

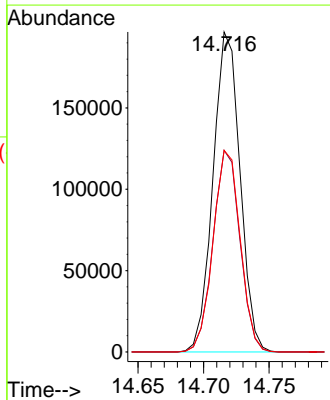
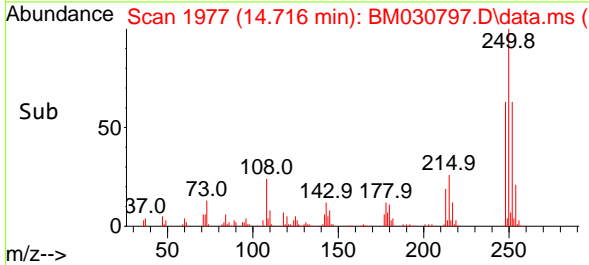


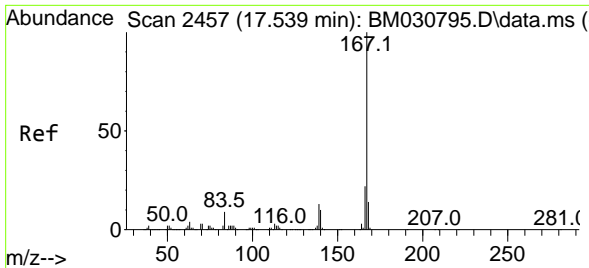
#76  
 Pentachlorobenzene  
 Concen: 38.25 ng/uL  
 RT: 14.716 min Scan# 1977  
 Delta R.T. -0.006 min  
 Lab File: BM030797.D  
 Acq: 03 Jul 2021 05:36



Tgt Ion:250 Resp: 281227

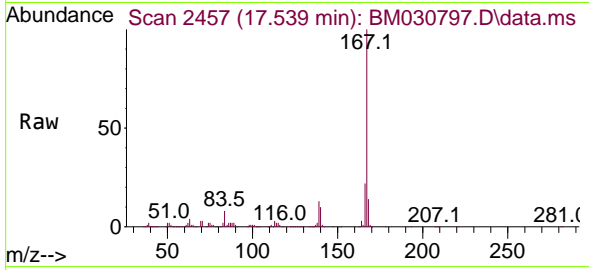
Ion	Ratio	Lower	Upper
250	100		
248	63.0	50.2	75.4
252	63.0	52.2	78.2





#77  
 Carbazole  
 Concen: 37.67 ng/ul  
 RT: 17.539 min Scan# 2457  
 Delta R.T. -0.006 min  
 Lab File: BM030797.D  
 Acq: 03 Jul 2021 05:36

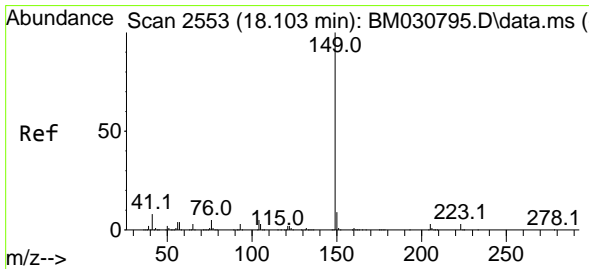
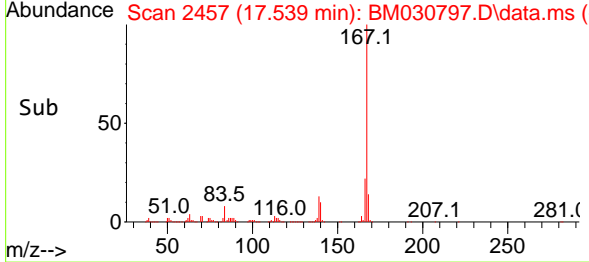
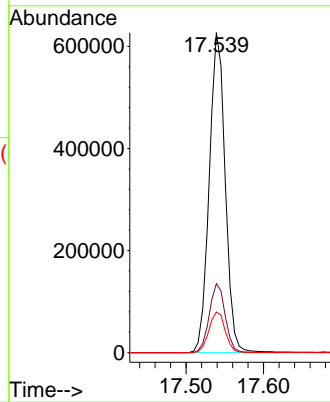
**Instrument :**  
 BNA\_M  
**ClientSampled :**  
 SLCS473



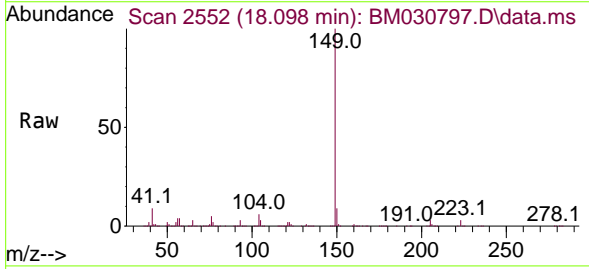
Tgt Ion:167 Resp: 897530

Ion	Ratio	Lower	Upper
167	100		
166	21.6	17.0	25.6
139	12.7	9.9	14.9

**Manual Integrations**  
**APPROVED**  
 mohammad  
 7/6/2021 9:25:36 AM

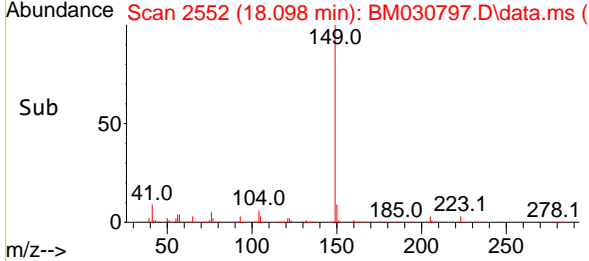
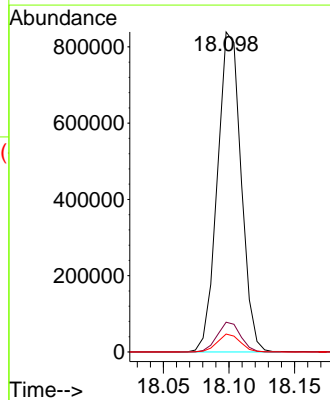


#78  
 Di-n-butylphthalate  
 Concen: 43.46 ng/ul  
 RT: 18.098 min Scan# 2552  
 Delta R.T. -0.006 min  
 Lab File: BM030797.D  
 Acq: 03 Jul 2021 05:36

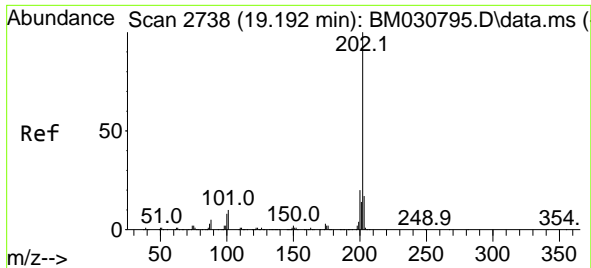


Tgt Ion:149 Resp: 1055091

Ion	Ratio	Lower	Upper
149	100		
150	9.3	7.3	10.9
104	5.6	4.1	6.1

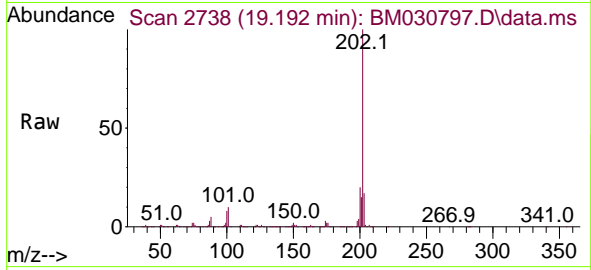






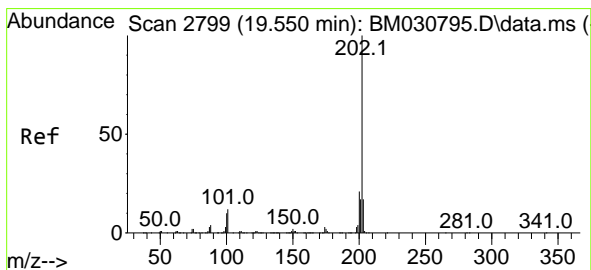
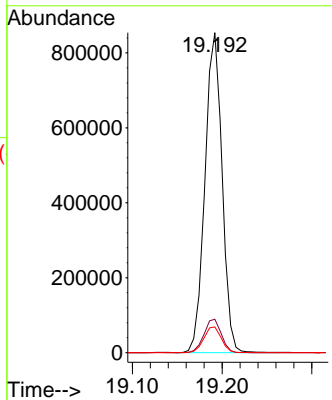
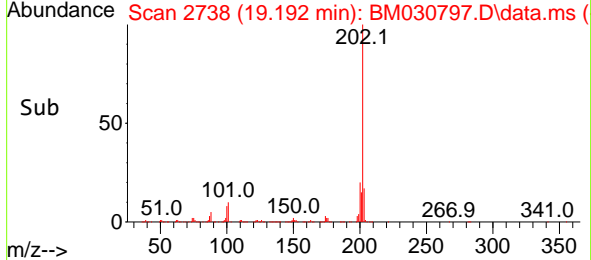
#80  
 Fluoranthene  
 Concen: 37.17 ng/ul  
 RT: 19.192 min Scan# 2738  
 Delta R.T. 0.000 min  
 Lab File: BM030797.D  
 Acq: 03 Jul 2021 05:36

**Instrument :**  
 BNA\_M  
**ClientSampled :**  
 SLCS473

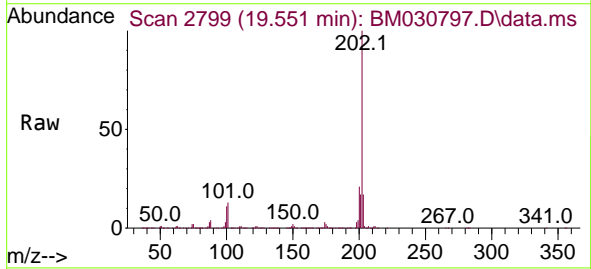


Tgt Ion:202 Resp: 1130696  
 Ion Ratio Lower Upper  
 202 100  
 101 10.4 8.8 13.2  
 100 8.1 6.8 10.2

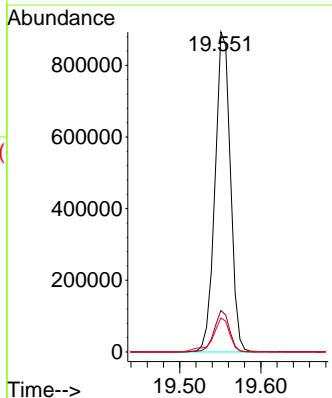
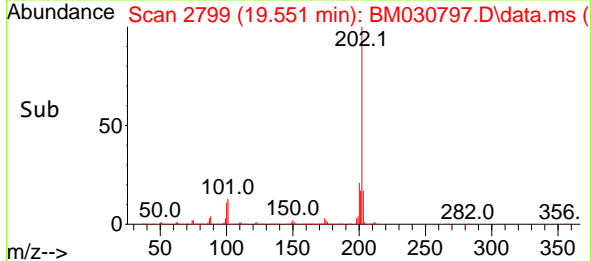
**Manual Integrations**  
**APPROVED**  
 mohammad  
 7/6/2021 9:25:36 AM

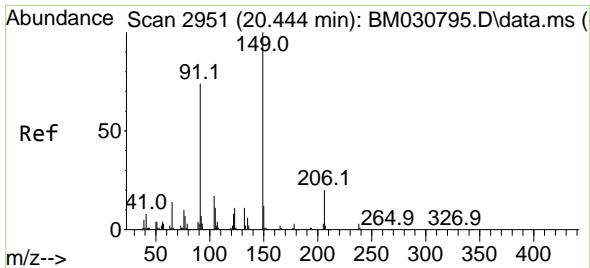


#82  
 Pyrene  
 Concen: 36.88 ng/ul  
 RT: 19.551 min Scan# 2799  
 Delta R.T. -0.006 min  
 Lab File: BM030797.D  
 Acq: 03 Jul 2021 05:36



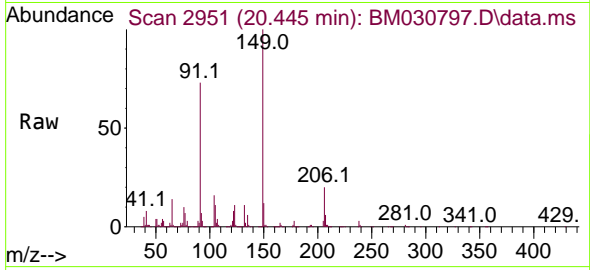
Tgt Ion:202 Resp: 1178820  
 Ion Ratio Lower Upper  
 202 100  
 101 13.0 10.0 15.0  
 100 10.6 8.5 12.7





#83  
 Butylbenzylphthalate  
 Concen: 41.00 ng/ul  
 RT: 20.445 min Scan# 2951  
 Delta R.T. -0.006 min  
 Lab File: BM030797.D  
 Acq: 03 Jul 2021 05:36

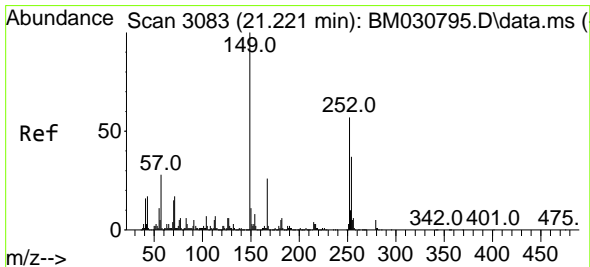
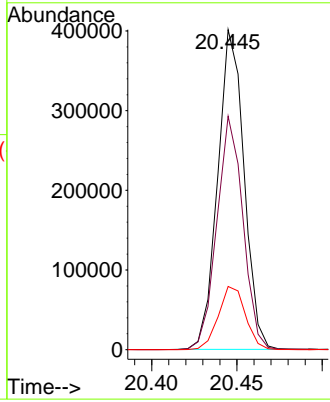
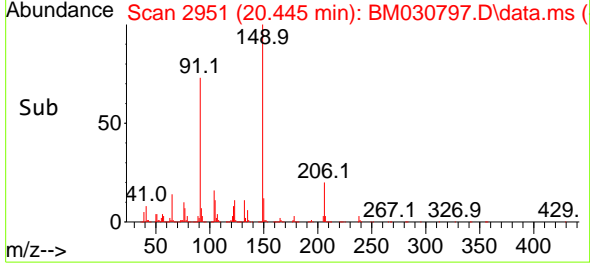
**Instrument :**  
 BNA\_M  
**ClientSampled :**  
 SLCS473



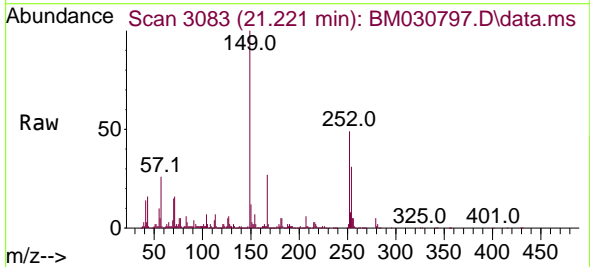
Tgt Ion:149 Resp: 431414

Ion	Ratio	Lower	Upper
149	100		
91	73.0	57.4	86.2
206	19.8	15.9	23.9

**Manual Integrations**  
**APPROVED**  
 mohammad  
 7/6/2021 9:25:36 AM

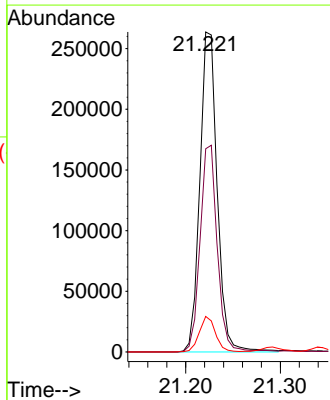
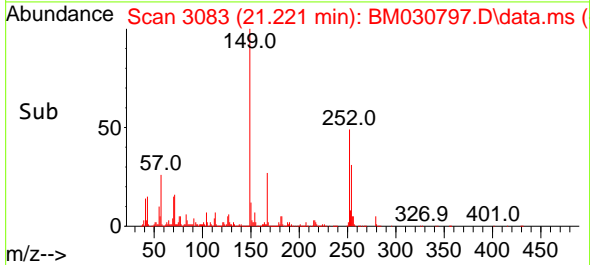


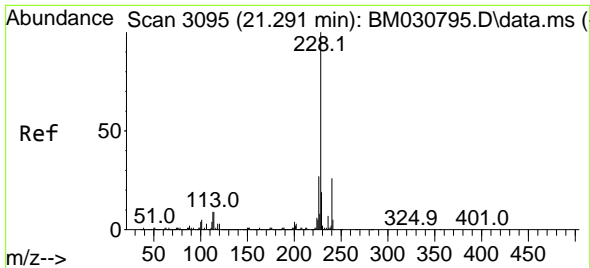
#84  
 3,3'-Dichlorobenzidine  
 Concen: 35.78 ng/ul  
 RT: 21.221 min Scan# 3083  
 Delta R.T. -0.012 min  
 Lab File: BM030797.D  
 Acq: 03 Jul 2021 05:36



Tgt Ion:252 Resp: 335301

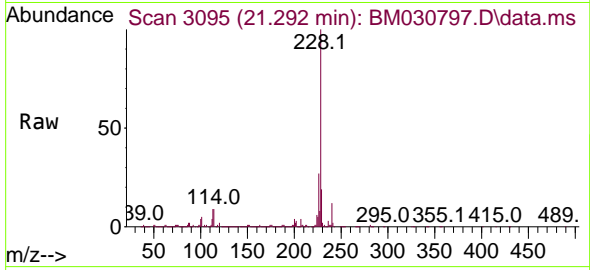
Ion	Ratio	Lower	Upper
252	100		
254	63.5	49.9	74.9
126	11.1	8.9	13.3





#85  
 Benzo(a)anthracene  
 Concen: 39.52 ng/ul  
 RT: 21.292 min Scan# 3095  
 Delta R.T. 0.000 min  
 Lab File: BM030797.D  
 Acq: 03 Jul 2021 05:36

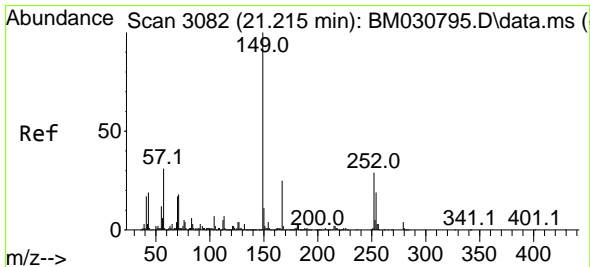
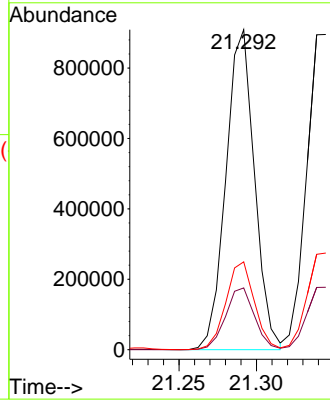
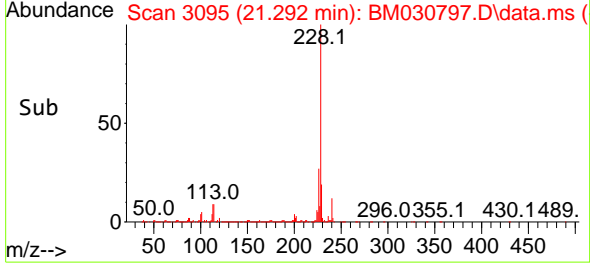
**Instrument :**  
 BNA\_M  
**ClientSampled :**  
 SLCS473



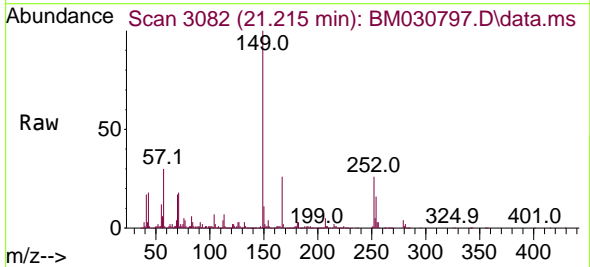
Tgt Ion:228 Resp: 1165967  

Ion	Ratio	Lower	Upper
228	100		
229	19.3	16.0	24.0
226	27.4	22.2	33.2

**Manual Integrations**  
**APPROVED**  
 mohammad  
 7/6/2021 9:25:36 AM

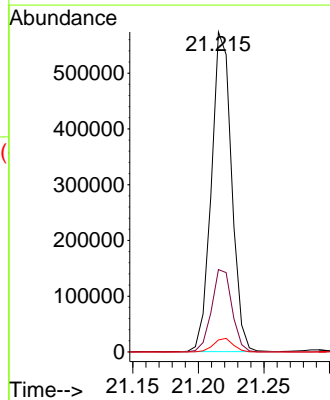
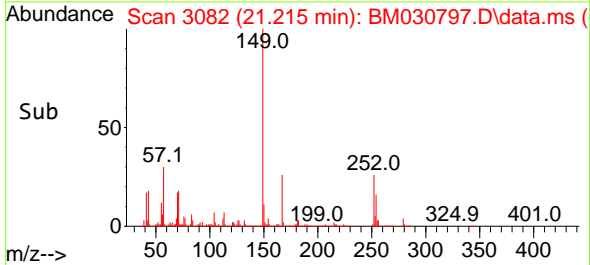


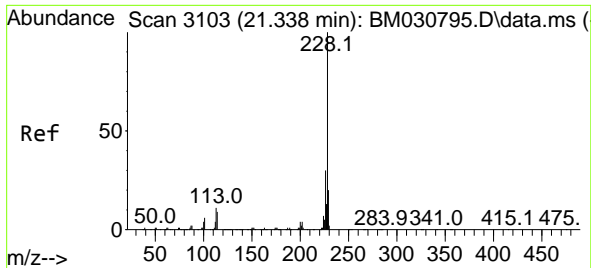
#86  
 Bis(2-ethylhexyl)phthalate  
 Concen: 40.61 ng/ul  
 RT: 21.215 min Scan# 3082  
 Delta R.T. -0.006 min  
 Lab File: BM030797.D  
 Acq: 03 Jul 2021 05:36



Tgt Ion:149 Resp: 614684  

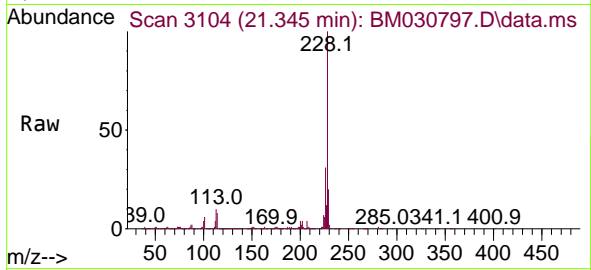
Ion	Ratio	Lower	Upper
149	100		
167	25.8	20.7	31.1
279	3.8	3.0	4.4





#87  
 Chrysene  
 Concen: 39.54 ng/u1  
 RT: 21.345 min Scan# 3104  
 Delta R.T. 0.000 min  
 Lab File: BM030797.D  
 Acq: 03 Jul 2021 05:36

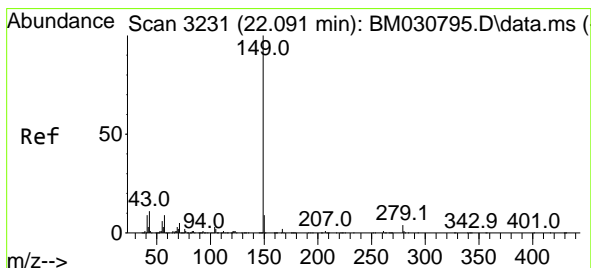
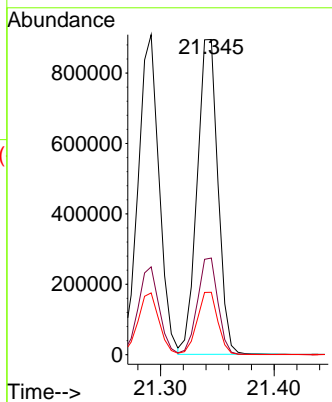
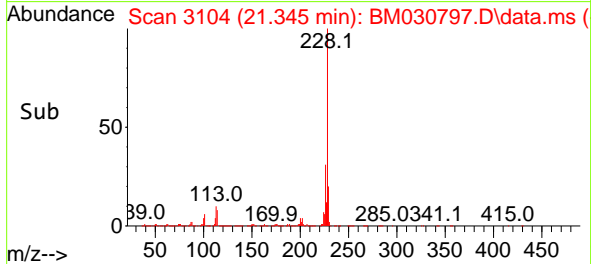
Instrument :  
 BNA\_M  
 ClientSampled :  
 SLCS473



Tgt Ion:228 Resp: 1137213  
 Ion Ratio Lower Upper  
 228 100  
 226 30.7 23.6 35.4  
 229 19.8 15.9 23.9

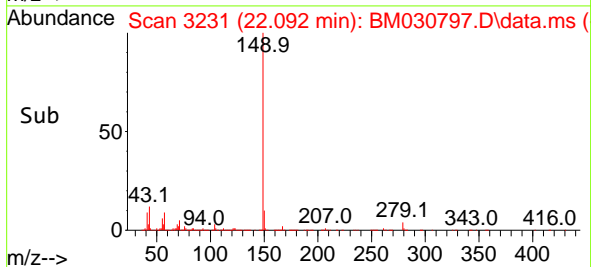
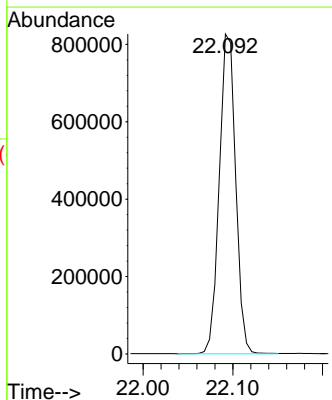
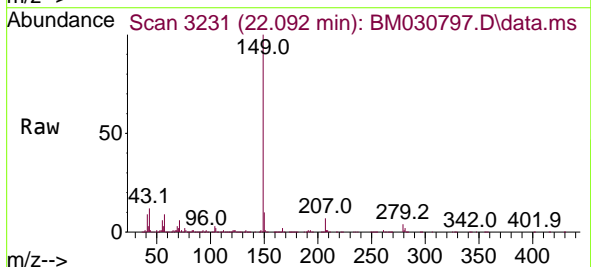
Manual Integrations  
 APPROVED

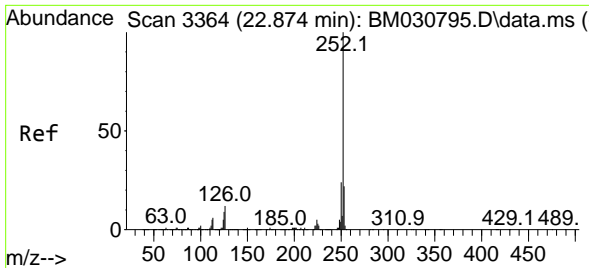
mohammad  
 7/6/2021 9:25:36 AM



#89  
 Di-n-octyl phthalate  
 Concen: 39.54 ng/u1  
 RT: 22.092 min Scan# 3231  
 Delta R.T. -0.012 min  
 Lab File: BM030797.D  
 Acq: 03 Jul 2021 05:36

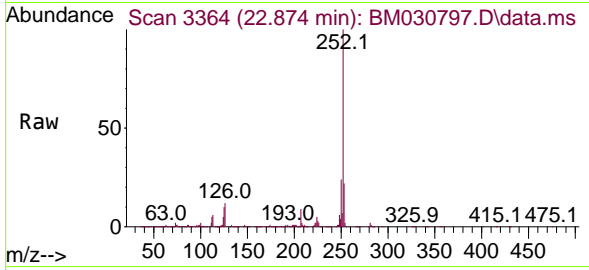
Tgt Ion:149 Resp: 1047353





#90  
 Benzo(b)fluoranthene  
 Concen: 43.11 ng/ul  
 RT: 22.874 min Scan# 3364  
 Delta R.T. -0.006 min  
 Lab File: BM030797.D  
 Acq: 03 Jul 2021 05:36

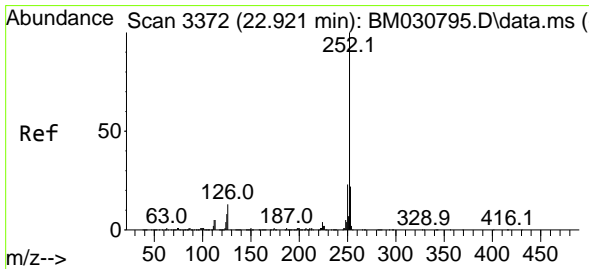
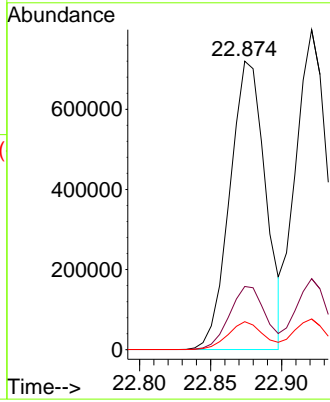
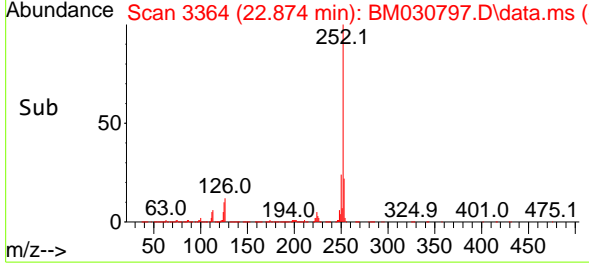
**Instrument :**  
 BNA\_M  
**ClientSampled :**  
 SLCS473



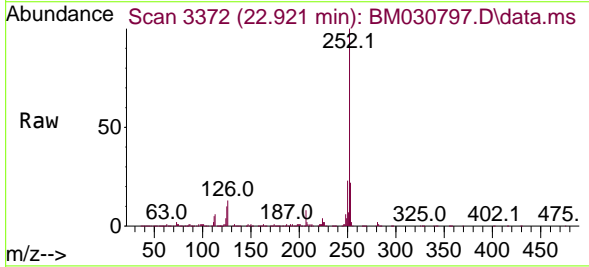
Tgt Ion:252 Resp: 1260243

Ion	Ratio	Lower	Upper
252	100		
253	21.9	17.8	26.6
125	9.7	7.7	11.5

**Manual Integrations**  
**APPROVED**  
 mohammad  
 7/6/2021 9:25:36 AM

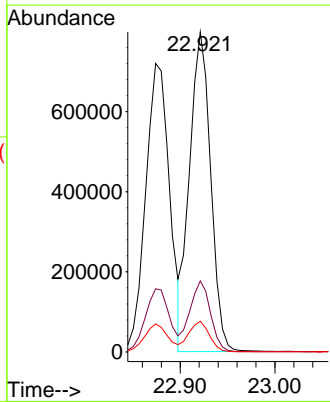
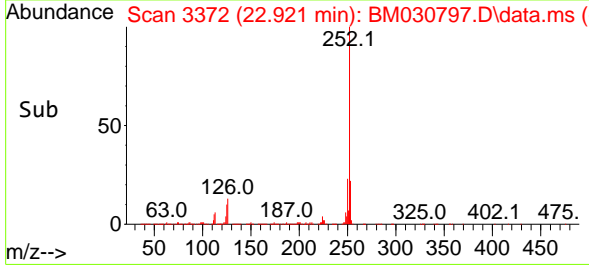


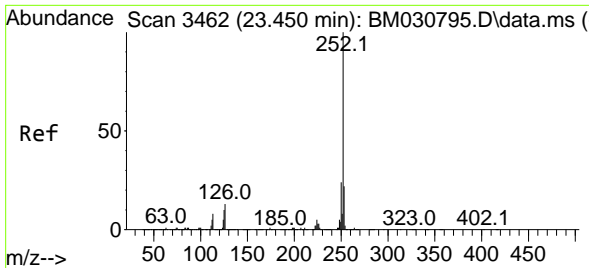
#91  
 Benzo(k)fluoranthene  
 Concen: 44.11 ng/ul  
 RT: 22.921 min Scan# 3372  
 Delta R.T. -0.006 min  
 Lab File: BM030797.D  
 Acq: 03 Jul 2021 05:36



Tgt Ion:252 Resp: 1239331

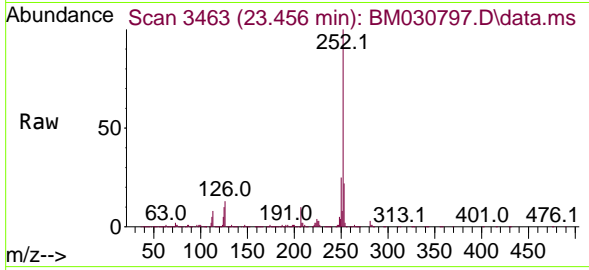
Ion	Ratio	Lower	Upper
252	100		
253	22.2	17.4	26.2
125	9.6	7.9	11.9





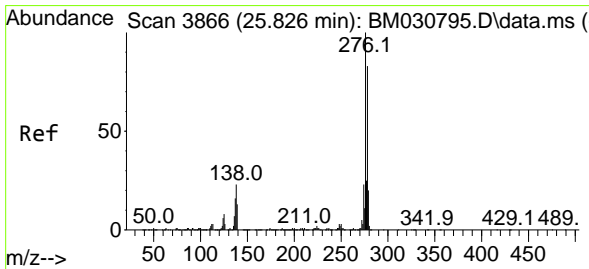
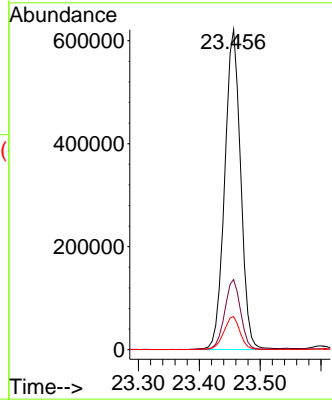
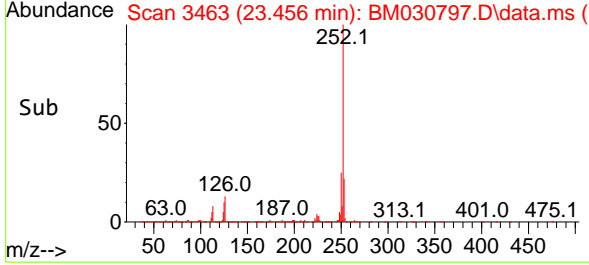
#93  
 Benzo(a)pyrene  
 Concen: 42.94 ng/ul  
 RT: 23.456 min Scan# 3463  
 Delta R.T. -0.006 min  
 Lab File: BM030797.D  
 Acq: 03 Jul 2021 05:36

**Instrument :**  
 BNA\_M  
**ClientSampled :**  
 SLCS473

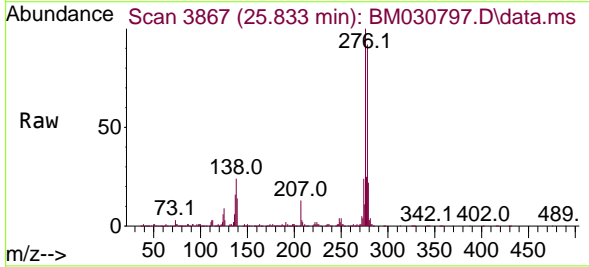


Tgt Ion:252 Resp: 1128842  
 Ion Ratio Lower Upper  
 252 100  
 253 21.9 17.5 26.3  
 125 10.3 8.6 13.0

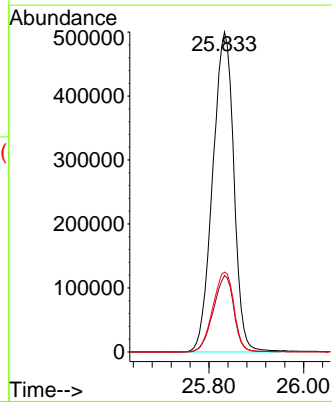
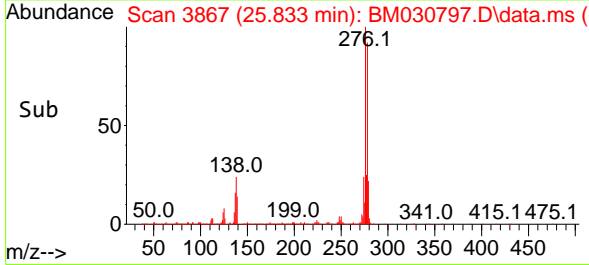
**Manual Integrations**  
**APPROVED**  
 mohammad  
 7/6/2021 9:25:36 AM

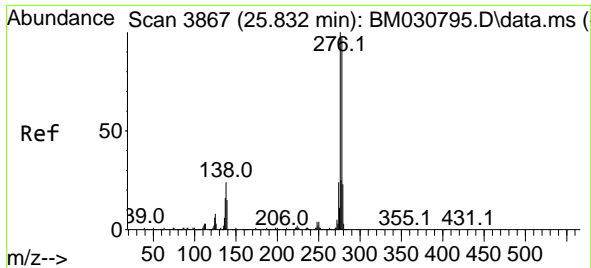


#94  
 Indeno(1,2,3-cd)pyrene  
 Concen: 46.83 ng/ul  
 RT: 25.833 min Scan# 3867  
 Delta R.T. -0.006 min  
 Lab File: BM030797.D  
 Acq: 03 Jul 2021 05:36



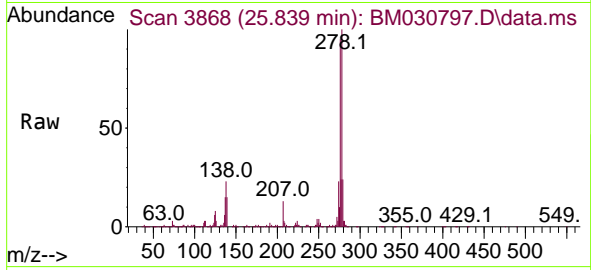
Tgt Ion:276 Resp: 1549657  
 Ion Ratio Lower Upper  
 276 100  
 138 23.9 19.5 29.3  
 277 24.9 19.6 29.4





#95  
 Dibenzo(a,h)anthracene  
 Concen: 47.86 ng/ul  
 RT: 25.839 min Scan# 3868  
 Delta R.T. -0.006 min  
 Lab File: BM030797.D  
 Acq: 03 Jul 2021 05:36

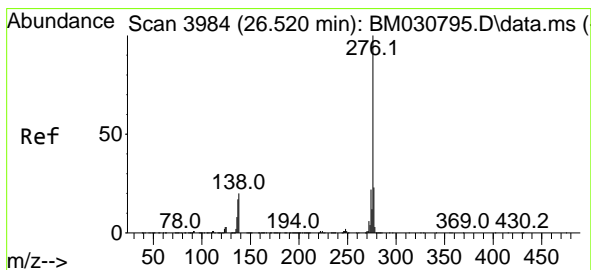
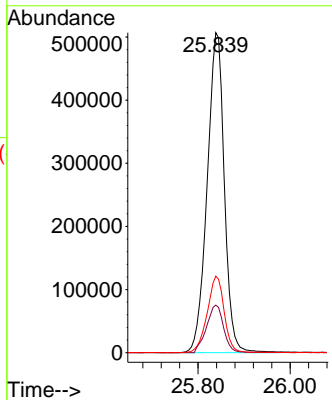
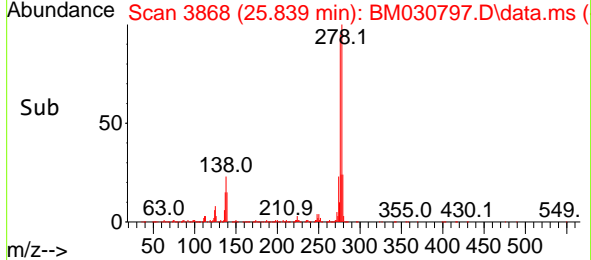
**Instrument :**  
 BNA\_M  
**ClientSampled :**  
 SLCS473



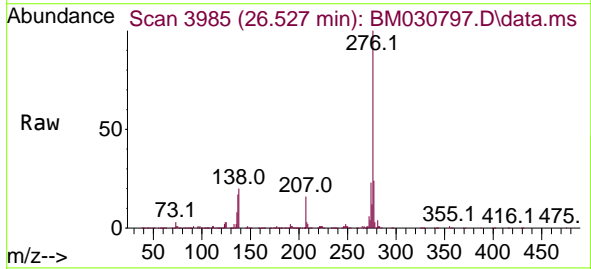
Tgt Ion:278 Resp: 1312911  

Ion	Ratio	Lower	Upper
278	100		
139	14.8	12.8	19.2
279	23.9	19.1	28.7

**Manual Integrations**  
**APPROVED**  
 mohammad  
 7/6/2021 9:25:36 AM



#96  
 Benzo(g,h,i)perylene  
 Concen: 45.48 ng/ul  
 RT: 26.527 min Scan# 3985  
 Delta R.T. -0.012 min  
 Lab File: BM030797.D  
 Acq: 03 Jul 2021 05:36



Tgt Ion:276 Resp: 1255756  

Ion	Ratio	Lower	Upper
276	100		
138	20.0	16.5	24.7
277	23.6	18.5	27.7

