

Data Path : Z:\HPCHEM1\BNA_M\DATA\BM070115\
 Data File : BM001808.D
 Acq On : 01 Jul 2015 15:24
 Operator : TP/UM
 Sample : PB84301BL
 Misc : SBLK79
 ALS Vial : 3 Sample Multiplier: 1

Instrument :
 BNA_M
 ClientSampleId :
 SBLK79

Integration Parameters: LSCINT.P

Integrator: RTE
 Smoothing : OFF
 Sampling : 1
 Start Thrs: 0.2
 Stop Thrs : 0

Filtering: 5
 Min Area: 0.1 % of largest Peak
 Max Peaks: 100
 Peak Location: TOP

If leading or trailing edge < 100 prefer < Baseline drop else tangent >
 Peak separation: 5

Method : Z:\HPCHEM1\BNA_M\METHODS\SOM02.2-EPA-BM061515.M
 Title : SVOA CALIBRATION

Signal : TIC

| peak # | R.T. min | first scan | max scan | last scan | PK TY | peak height | corr. area | corr. % max. | % of total |
|--------|----------|------------|----------|-----------|-------|-------------|------------|--------------|------------|
| 1 | 2.804 | 16 | 20 | 27 | rBV2 | 19736 | 29573 | 1.71% | 0.176% |
| 2 | 2.881 | 29 | 33 | 47 | rVB | 151790 | 171600 | 9.91% | 1.020% |
| 3 | 3.140 | 73 | 77 | 83 | rVB | 19331 | 21921 | 1.27% | 0.130% |
| 4 | 3.693 | 167 | 171 | 175 | rBV | 5132 | 6146 | 0.36% | 0.037% |
| 5 | 6.828 | 698 | 704 | 714 | rBB | 297479 | 447755 | 25.87% | 2.661% |
| 6 | 6.998 | 727 | 733 | 743 | rBB | 223442 | 325192 | 18.79% | 1.933% |
| 7 | 7.192 | 760 | 766 | 774 | rBB | 292934 | 457788 | 26.45% | 2.721% |
| 8 | 7.663 | 840 | 846 | 853 | rBB | 222524 | 341481 | 19.73% | 2.030% |
| 9 | 8.363 | 959 | 965 | 975 | rVB | 358907 | 570005 | 32.93% | 3.388% |
| 10 | 8.822 | 1035 | 1043 | 1050 | rBB | 263349 | 427103 | 24.68% | 2.538% |
| 11 | 9.539 | 1159 | 1165 | 1172 | rVB | 232067 | 364428 | 21.06% | 2.166% |
| 12 | 10.069 | 1248 | 1255 | 1263 | rBV | 375776 | 594832 | 34.37% | 3.535% |
| 13 | 10.451 | 1313 | 1320 | 1328 | rBB | 295435 | 482965 | 27.91% | 2.871% |
| 14 | 10.592 | 1337 | 1344 | 1351 | rBV | 368585 | 590795 | 34.14% | 3.511% |
| 15 | 13.727 | 1871 | 1877 | 1884 | rBV | 593110 | 799329 | 46.18% | 4.751% |
| 16 | 14.010 | 1918 | 1925 | 1932 | rBV | 720039 | 1018650 | 58.86% | 6.054% |
| 17 | 14.315 | 1971 | 1977 | 1985 | rBV2 | 448612 | 658203 | 38.03% | 3.912% |
| 18 | 14.515 | 2005 | 2011 | 2020 | rBV | 290107 | 394300 | 22.78% | 2.344% |
| 19 | 15.309 | 2140 | 2146 | 2153 | rVB | 911040 | 1266472 | 73.18% | 7.527% |
| 20 | 15.433 | 2161 | 2167 | 2174 | rBV | 254727 | 341667 | 19.74% | 2.031% |
| 21 | 16.845 | 2403 | 2407 | 2411 | rVB3 | 1319 | 1955 | 0.11% | 0.012% |
| 22 | 17.062 | 2438 | 2444 | 2450 | rBV | 583063 | 788033 | 45.53% | 4.684% |
| 23 | 17.162 | 2454 | 2461 | 2471 | rVV | 998718 | 1389399 | 80.28% | 8.258% |
| 24 | 19.350 | 2829 | 2833 | 2838 | rBV | 6254 | 7168 | 0.41% | 0.043% |
| 25 | 19.462 | 2846 | 2852 | 2860 | rBV | 1249064 | 1620328 | 93.62% | 9.630% |
| 26 | 20.227 | 2979 | 2982 | 2986 | rBV2 | 1456 | 2264 | 0.13% | 0.013% |
| 27 | 21.056 | 3120 | 3123 | 3125 | rVV4 | 6102 | 5679 | 0.33% | 0.034% |
| 28 | 21.097 | 3129 | 3130 | 3133 | rBV3 | 2423 | 2586 | 0.15% | 0.015% |
| 29 | 21.256 | 3152 | 3157 | 3162 | rBV | 811857 | 970771 | 56.09% | 5.770% |
| 30 | 22.750 | 3407 | 3411 | 3415 | rBV6 | 6129 | 11744 | 0.68% | 0.070% |
| 31 | 23.338 | 3504 | 3511 | 3522 | rVB2 | 975394 | 1730717 | 100.00% | 10.287% |
| 32 | 23.480 | 3528 | 3535 | 3544 | rVB | 530112 | 984197 | 56.87% | 5.850% |

Data Path : Z:\HPCHEM1\BNA_M\DATA\BM070115\
Data File : BM001808.D
Acq On : 01 Jul 2015 15:24
Operator : TP/UM
Sample : PB84301BL
Misc : SBLK79
ALS Vial : 3 Sample Multiplier: 1

Instrument :
BNA_M
ClientSampleId :
SBLK79

Integration Parameters: LSCINT.P
Integrator: RTE
Smoothing : OFF Filtering: 5
Sampling : 1 Min Area: 0.1 % of largest Peak
Start Thrs: 0.2 Max Peaks: 100
Stop Thrs : 0 Peak Location: TOP

If leading or trailing edge < 100 prefer < Baseline drop else tangent >
Peak separation: 5

Method : Z:\HPCHEM1\BNA_M\METHODS\SOM02.2-EPA-BM061515.M
Title : SVOA CALIBRATION

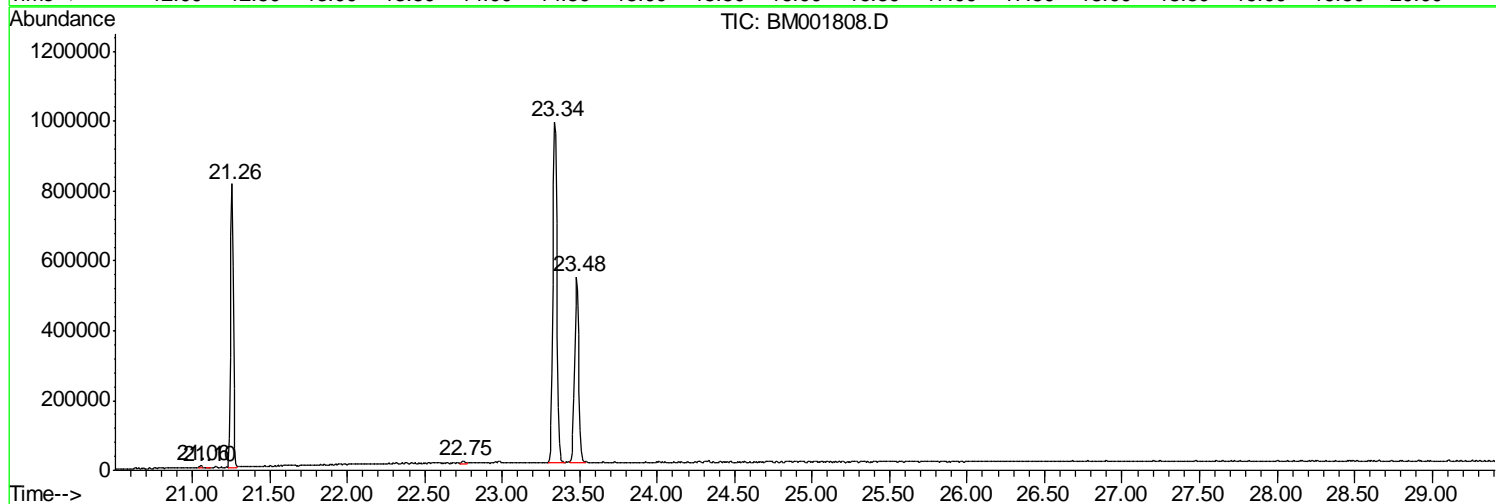
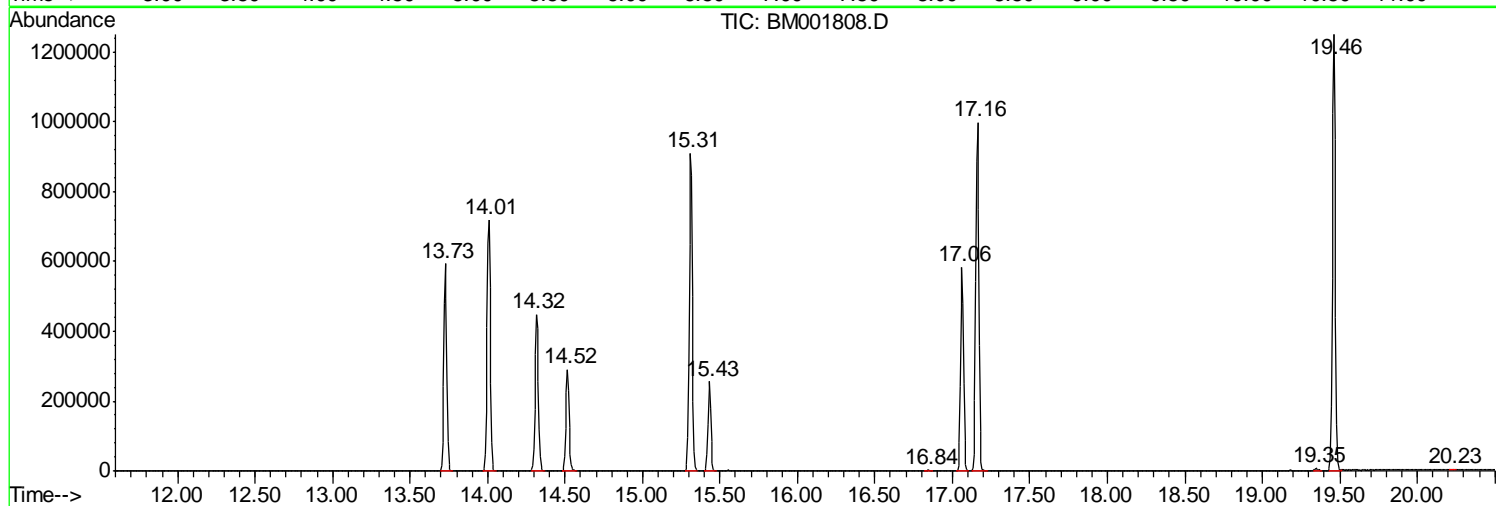
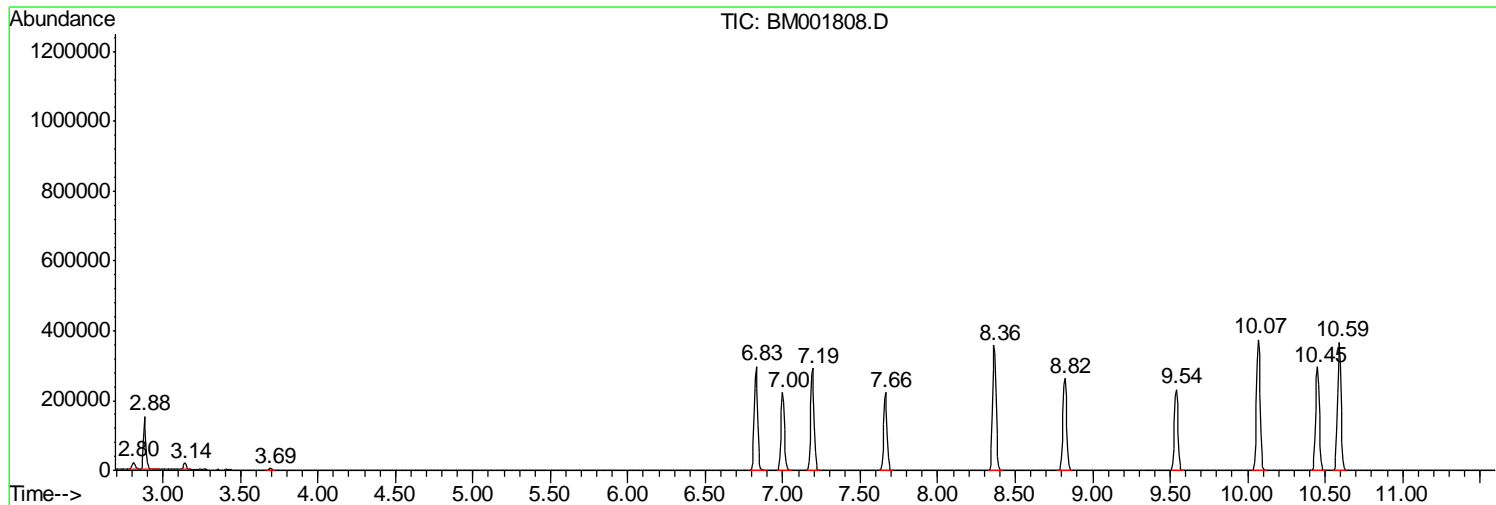
Sum of corrected areas: 16825046

Data Path : Z:\HPCHEM1\BNA_M\DATA\BM070115\
Data File : BM001808.D
Acq On : 01 Jul 2015 15:24
Operator : TP/UM
Sample : PB84301BL
Misc : SBLK79
ALS Vial : 3 Sample Multiplier: 1

Instrument :
BNA_M
ClientSampled :
SBLK79

Quant Method : Z:\HPCHEM1\BNA_M\METHODS\SOM02.2-EPA-BM061515.M
Quant Title : SVOA CALIBRATION

TIC Library : C:\DATABASE\NIST02.L
TIC Integration Parameters: LSCINT.P



Data Path : Z:\HPCHEM1\BNA_M\DATA\BM070115\
 Data File : BM001808.D
 Acq On : 01 Jul 2015 15:24
 Operator : TP/UM
 Sample : PB84301BL
 Misc : SBLK79
 ALS Vial : 3 Sample Multiplier: 1

Instrument :
 BNA_M
 ClientSampled :
 SBLK79

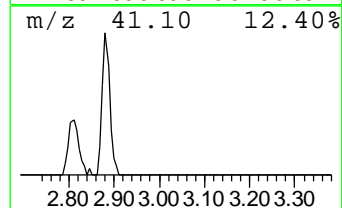
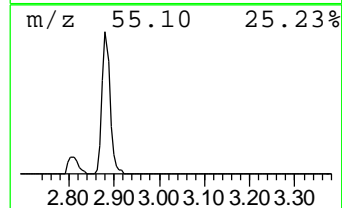
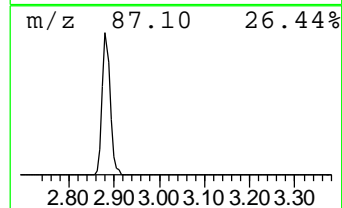
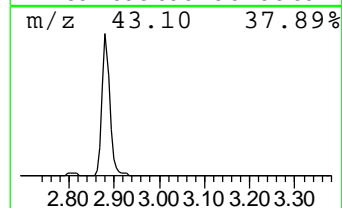
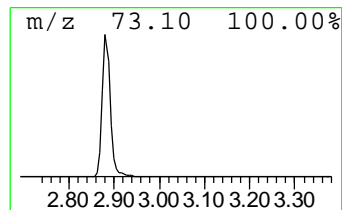
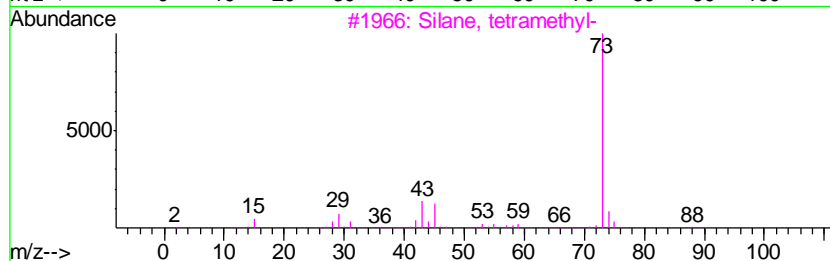
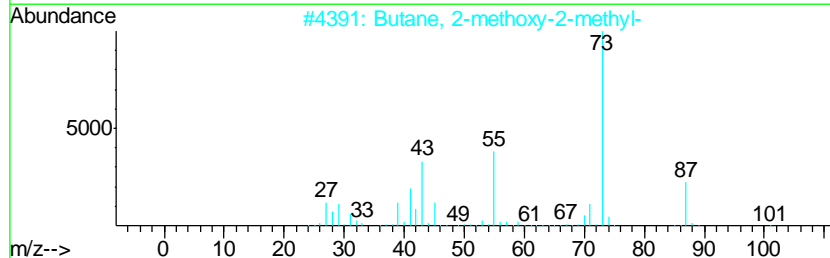
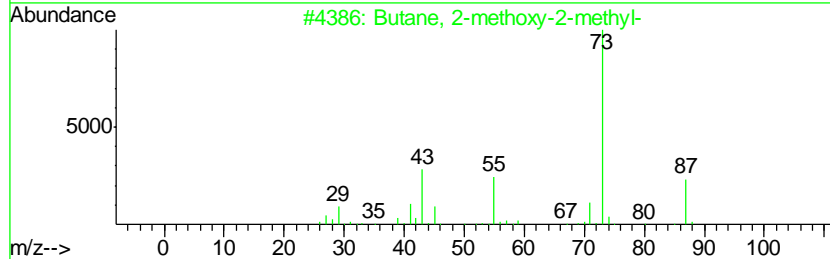
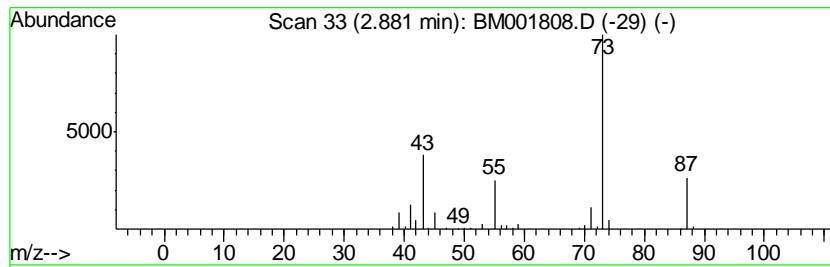
Quant Method : Z:\HPCHEM1\BNA_M\METHODS\SOM02.2-EPA-BM061515.M
 Quant Title : SVOA CALIBRATION

TIC Library : C:\DATABASE\NIST02.L
 TIC Integration Parameters: LSCINT.P

 Peak Number 1 Butane, 2-methoxy-2-methyl- Concentration Rank 1

| R.T. | EstConc | Area | Relative to ISTD | R.T. |
|------|-------------|--------|------------------------|------|
| 2.88 | 10.05 ng/ul | 171600 | 1,4-Dichlorobenzene-d4 | 7.66 |

| Hit# | of | Tentative ID | MW | MolForm | CAS# | Qual |
|------|----|-----------------------------|-----|---------|-------------|------|
| 1 | 5 | Butane, 2-methoxy-2-methyl- | 102 | C6H14O | 000994-05-8 | 78 |
| 2 | | Butane, 2-methoxy-2-methyl- | 102 | C6H14O | 000994-05-8 | 64 |
| 3 | | Silane, tetramethyl- | 88 | C4H12Si | 000075-76-3 | 35 |
| 4 | | Pentane, 3-methoxy- | 102 | C6H14O | 036839-67-5 | 17 |
| 5 | | 2-Methyl-5-hexen-3-ol | 114 | C7H14O | 032815-70-6 | 17 |



Data Path : Z:\HPCHEM1\BNA_M\DATA\BM070115\
Data File : BM001808.D
Acq On : 01 Jul 2015 15:24
Operator : TP/UM
Sample : PB84301BL
Misc : SBLK79
ALS Vial : 3 Sample Multiplier: 1

Instrument :
BNA_M
ClientSampleId :
SBLK79

Quant Method : Z:\HPCHEM1\BNA_M\METHODS\SOM02.2-EPA-BM061515.M
Quant Title : SVOA CALIBRATION

TIC Library : C:\DATABASE\NIST02.L
TIC Integration Parameters: LSCINT.P

| TIC Top Hit name | RT | EstConc | Units | Response | --Internal Standard-- | | | |
|----------------------|------|---------|-------|----------|-----------------------|------|--------|------|
| | | | | | # | RT | Resp | Conc |
| Butane, 2-methoxy... | 2.88 | 10.1 | ng/ul | 171600 | 1 | 7.66 | 341481 | 20.0 |