

Data Path : Z:\HPCHEM1\BNA M\DATA\BM070316\  
 Data File : BM006245.D  
 Acq On : 03 Jul 2016 21:35  
 Operator : UM/SJ  
 Sample : H3797-06RE  
 Misc :  
 ALS Vial : 21 Sample Multiplier: 1

Instrument :  
 BNA\_M  
 ClientSampled :

Quant Time: Jul 04 01:55:53 2016  
 Quant Method : Z:\HPCHEM1\BNA M\METHODS\SOM02.2-EPA-BM070216.M  
 Quant Title : SVOA CALIBRATION  
 QLast Update : Mon Jul 04 01:54:46 2016  
 Response via : Initial Calibration

Internal Standards	R.T.	QIon	Response	Conc	Units	Dev(Min)
1) 1,4-Dichlorobenzene-d4	7.65	152	258220	20.00	ng/ul	0.00
18) Naphthalene-d8	10.43	136	1149028	20.00	ng/ul	0.00
35) Acenaphthene-d10	14.30	164	619917	20.00	ng/ul	0.00
61) Phenanthrene-d10	17.04	188	1293312	20.00	ng/ul	0.00
75) Chrysene-d12	21.24	240	1250408	20.00	ng/ul	0.00
83) Perylene-d12	23.46	264	1220493	20.00	ng/ul	0.00

## System Monitoring Compounds

3) 1,4-Dioxane-d8	3.16	96	19395	3.21	ng/uL	0.00
5) Phenol-d5	6.82	99	845823	34.98	ng/ul	0.00
7) Bis-(2-Chloroethyl)ether-d	6.99	67	543833	38.12	ng/ul	0.00
9) 2-Chlorophenol-d4	7.18	132	645347	34.87	ng/ul	0.00
13) 4-Methylphenol-d8	8.35	113	683177	34.91	ng/ul	0.00
19) Nitrobenzene-d5	8.80	128	338838	37.00	ng/ul	0.00
22) 2-Nitrophenol-d4	9.52	143	374133	36.05	ng/ul	0.00
26) 2,4-Dichlorophenol-d3	10.05	165	624609	33.21	ng/ul	0.00
29) 4-Chloroaniline-d4	10.57	131	892776	45.68	ng/ul	0.00
43) Dimethylphthalate-d6	13.71	166	1852064	35.80	ng/ul	0.00
46) Acenaphthylene-d8	13.99	160	2378715	37.14	ng/ul	0.00
51) 4-Nitrophenol-d4	14.51	143	293500	29.93	ng/ul	0.00
57) Fluorene-d10	15.29	176	1554283	34.85	ng/ul	0.00
62) 4,6-Dinitro-2-methylphenol	15.42	200	221980	29.29	ng/ul	0.00
70) Anthracene-d10	17.14	188	2210695	35.83	ng/ul	0.00
76) Pyrene-d10	19.44	212	2314284	38.81	ng/ul	0.00
87) Benzo(a)pyrene-d12	23.31	264	2183053	38.50	ng/ul	0.00

## Target Compounds

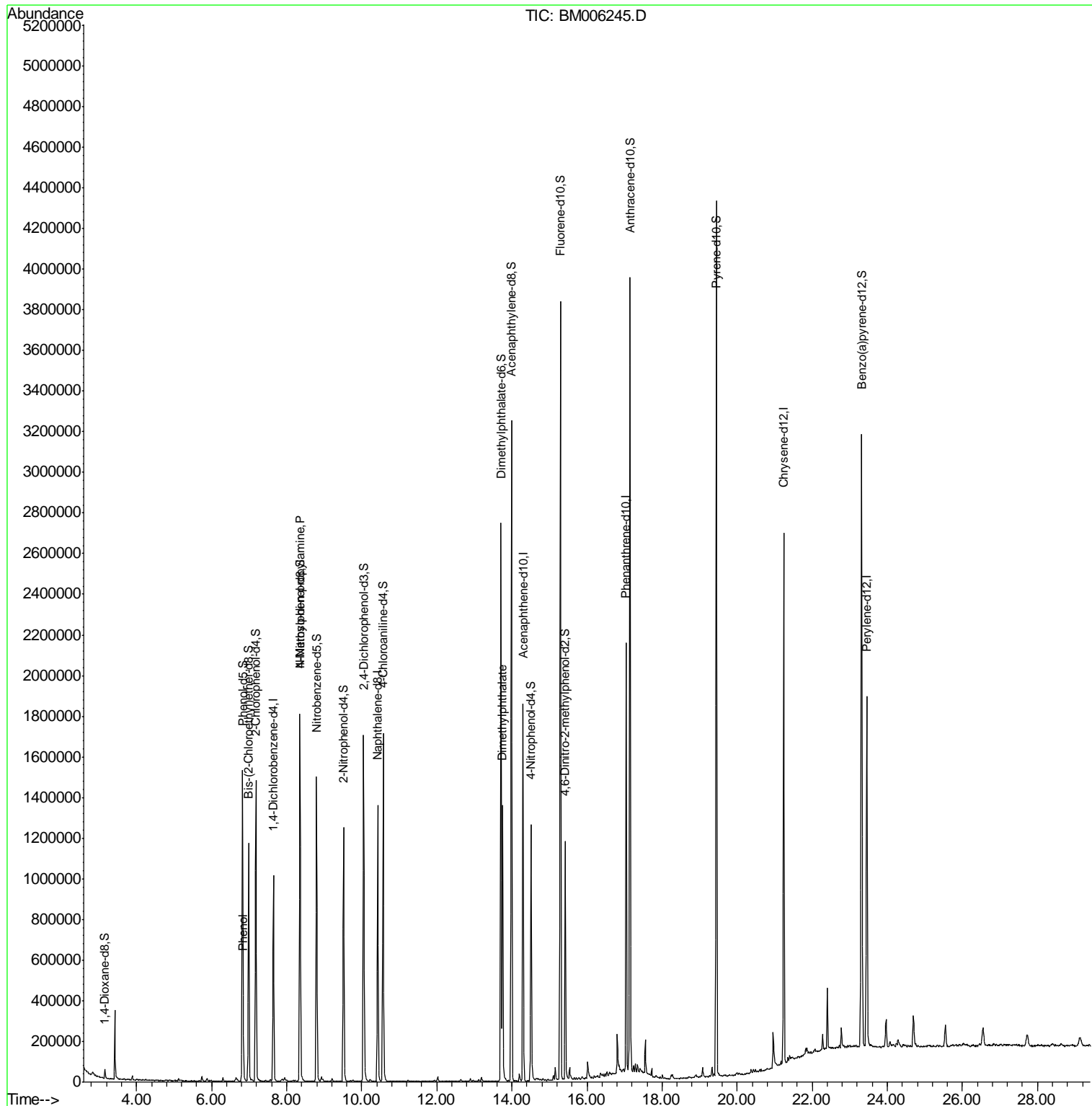
					Ovalue
6) Phenol	6.85	94	40290	1.60	ng/ul# 91
15) N-Nitroso-di-n-propylamine	8.35	70	19096	1.12	ng/ul# 1
44) Dimethylphthalate	13.76	163	854300	16.43	ng/ul 99

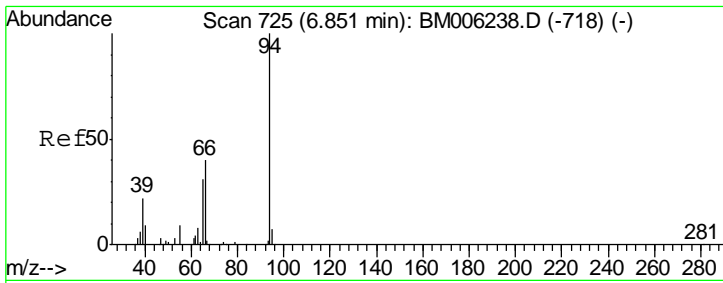
(#) = qualifier out of range (m) = manual integration (+) = signals summed

Data Path : Z:\HPCHEM1\BNA M\DATA\BM070316\  
 Data File : BM006245.D  
 Acq On : 03 Jul 2016 21:35  
 Operator : UM/SJ  
 Sample : H3797-06RE  
 Misc :  
 ALS Vial : 21 Sample Multiplier: 1

Instrument :  
 BNA\_M  
 ClientSampled :

Quant Time: Jul 04 01:55:53 2016  
 Quant Method : Z:\HPCHEM1\BNA M\METHODS\SOM02.2-EPA-BM070216.M  
 Quant Title : SVOA CALIBRATION  
 QLast Update : Mon Jul 04 01:54:46 2016  
 Response via : Initial Calibration

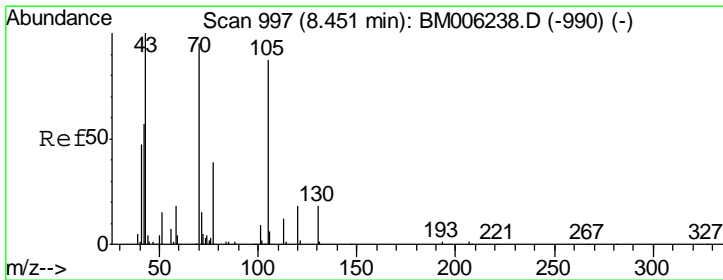
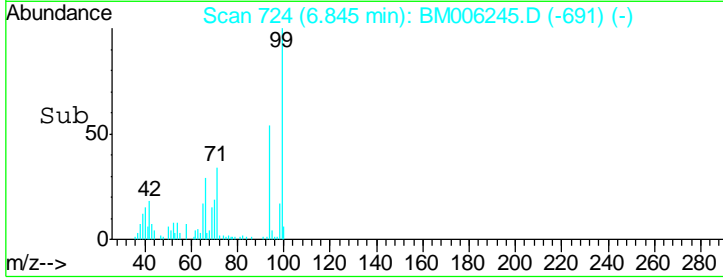
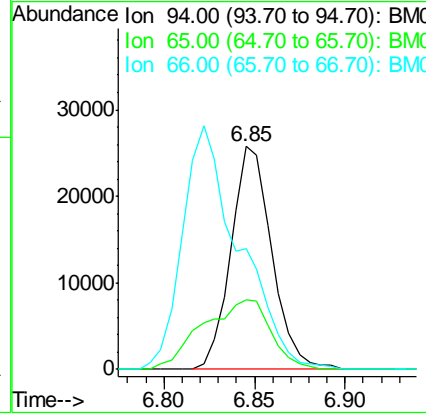
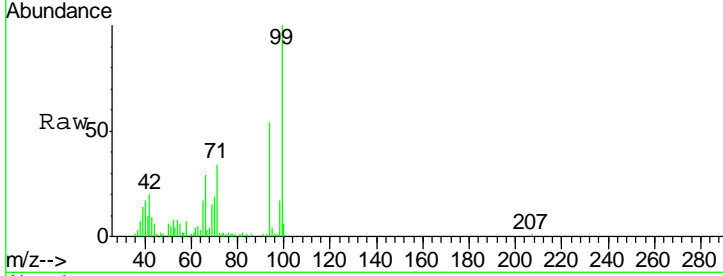




#6  
 Phenol  
 Concen: 1.60 ng/ul  
 RT: 6.85 min Scan# 724  
 Delta R.T. -0.01 min  
 Lab File: BM006245.D  
 Acq: 03 Jul 2016 21:35

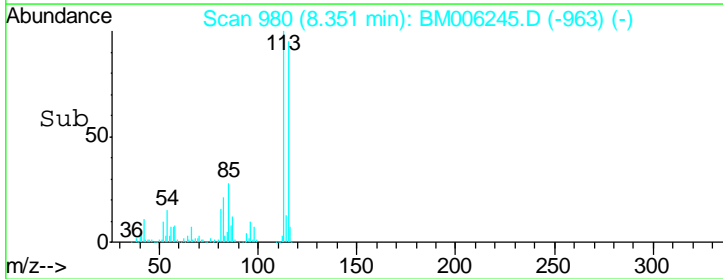
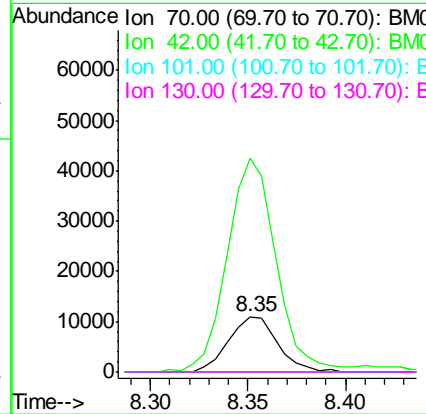
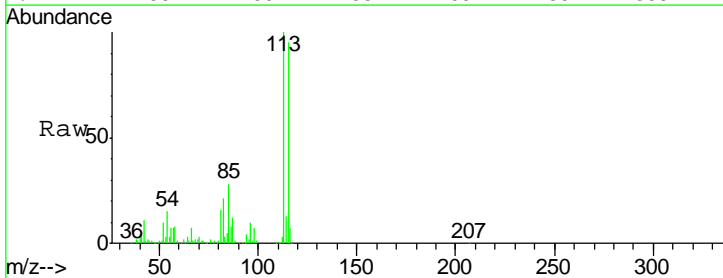
Instrument :  
 BNA\_M  
 ClientSampled :

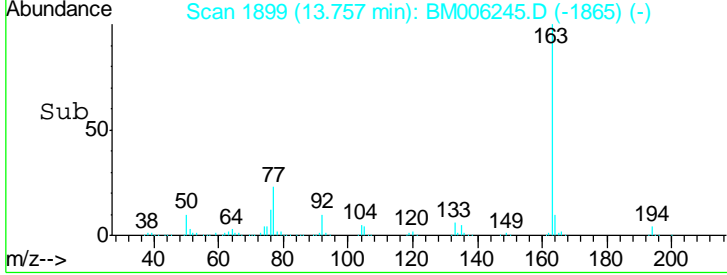
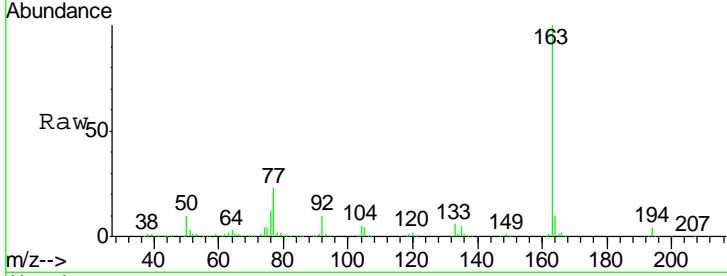
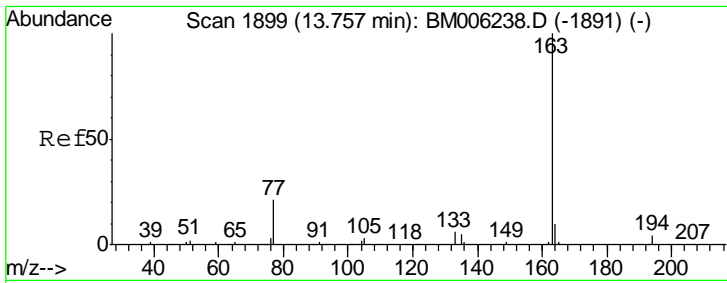
Tgt Ion	Resp	Lower	Upper
94	40290		
65	31.3	25.8	38.8
66	54.0	35.7	53.5#



#15  
 N-Nitroso-di-n-propylamine  
 Concen: 1.12 ng/ul  
 RT: 8.35 min Scan# 980  
 Delta R.T. -0.10 min  
 Lab File: BM006245.D  
 Acq: 03 Jul 2016 21:35

Tgt Ion	Resp	Lower	Upper
70	19096		
42	385.4	50.6	75.8#
101	0.0	7.9	11.9#
130	0.0	15.8	23.6#





#44  
 Dimethylphthalate  
 Concen: 16.43 ng/ul  
 RT: 13.76 min Scan# 1899  
 Delta R.T. 0.00 min  
 Lab File: BM006245.D  
 Acq: 03 Jul 2016 21:35

Instrument :  
 BNA\_M  
 ClientSampled :

Tot Ion:163 Resp: 854300

Ion	Ratio	Lower	Upper
163	100		
194	3.9	3.4	5.0
164	9.6	7.8	11.8

