

Data Path : Z:\HPCHEM1\BNA\_M\DATA\BM070615\  
 Data File : BM001839.D  
 Acq On : 06 Jul 2015 16:40  
 Operator : TP/UM  
 Sample : G2861-06  
 Misc :  
 ALS Vial : 10 Sample Multiplier: 1

Instrument :  
 BNA\_M  
 ClientSampled :  
 G93L2

Quant Time: Jul 07 05:25:18 2015  
 Quant Method : Z:\HPCHEM1\BNA\_M\METHODS\SOM02.2-EPA-BM061515.M  
 Quant Title : SVOA CALIBRATION  
 QLast Update : Tue Jul 07 04:02:33 2015  
 Response via : Initial Calibration

Internal Standards	R.T.	QIon	Response	Conc	Units	Dev(Min)
1) 1,4-Dichlorobenzene-d4	7.66	152	56744	20.00	ng/ul	0.00
18) Naphthalene-d8	10.45	136	215753	20.00	ng/ul	0.00
35) Acenaphthene-d10	14.32	164	126579	20.00	ng/ul	0.00
61) Phenanthrene-d10	17.06	188	280601	20.00	ng/ul	0.00
77) Chrysene-d12	21.26	240	343958	20.00	ng/ul	0.00
85) Perylene-d12	23.47	264	355028	20.00	ng/ul	0.00

## System Monitoring Compounds

3) 1,4-Dioxane-d8	3.15	96	2870	2.41	ng/uL	0.00
5) Phenol-d5	6.83	99	54390	12.48	ng/ul	0.00
7) Bis-(2-Chloroethyl)ether-d	7.00	67	33223	13.61	ng/ul	0.00
9) 2-Chlorophenol-d4	7.19	132	44885	13.02	ng/ul	0.00
13) 4-Methylphenol-d8	8.37	113	38042	10.87	ng/ul	0.00
19) Nitrobenzene-d5	8.82	128	21427	14.35	ng/ul	0.00
22) 2-Nitrophenol-d4	9.54	143	22209	13.60	ng/ul	0.00
26) 2,4-Dichlorophenol-d3	10.07	165	43935	12.57	ng/ul	0.00
29) 4-Chloroaniline-d4	10.59	131	43451	12.22	ng/ul	0.00
43) Dimethylphthalate-d6	13.73	166	120802	12.87	ng/ul	0.00
46) Acenaphthylene-d8	14.01	160	160534	13.05	ng/ul	0.00
51) 4-Nitrophenol-d4	14.52	143	14522	8.39	ng/ul	0.00
57) Fluorene-d10	15.31	176	117307	13.47	ng/ul	0.00
62) 4,6-Dinitro-2-methylphenol	15.43	200	10993	6.41	ng/ul	0.00
70) Anthracene-d10	17.16	188	175039	13.39	ng/ul	0.00
78) Pyrene-d10	19.46	212	201543	13.83	ng/ul	0.00
89) Benzo(a)pyrene-d12	23.33	264	208152	13.30	ng/ul	0.00

## Target Compounds

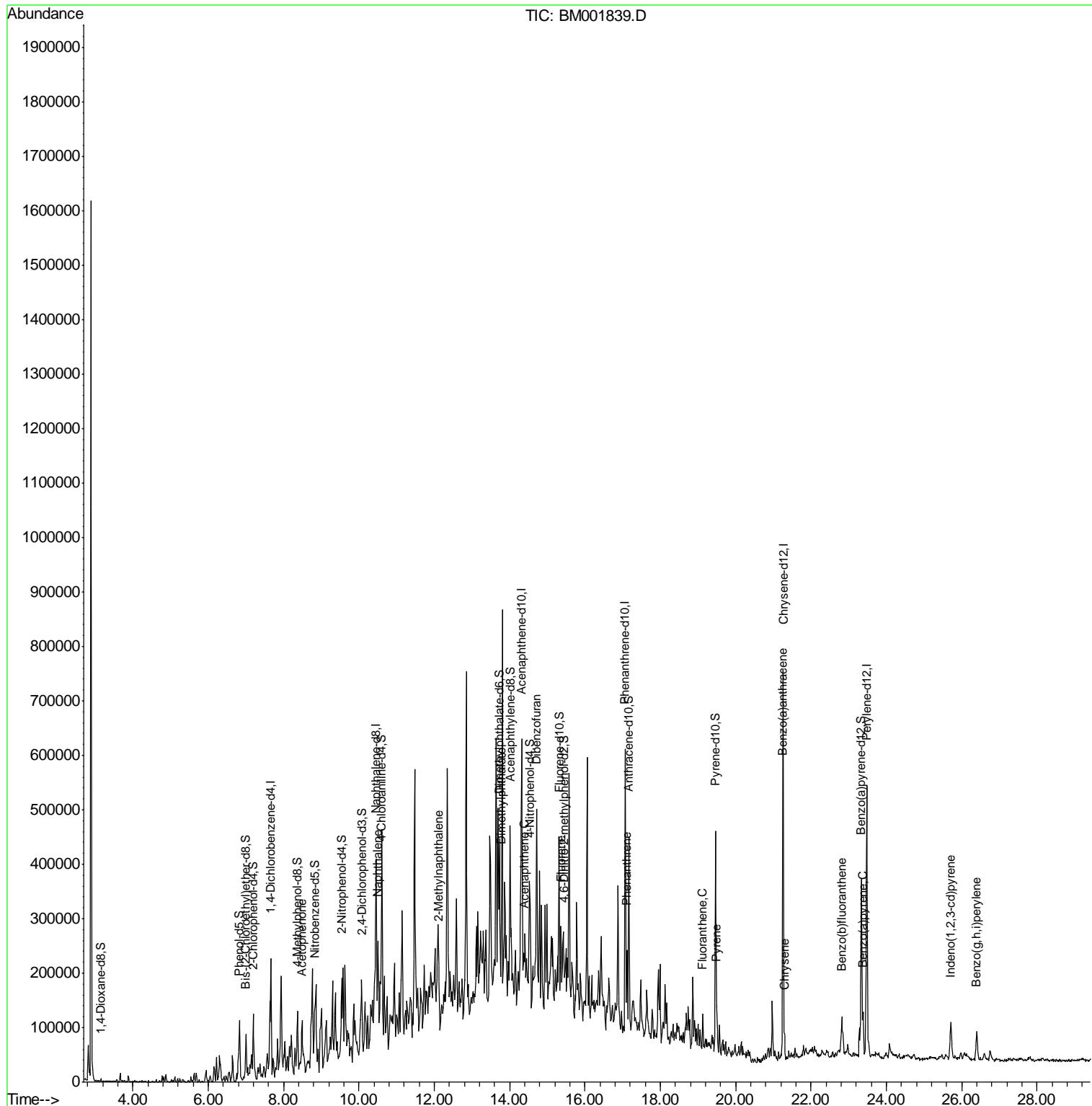
Target Compounds	R.T.	QIon	Response	Conc	Units	Qvalue
14) Acetophenone	8.49	105	9575	1.72	ng/ul#	80
28) Naphthalene	10.50	128	93738	8.60	ng/ul#	94
34) 2-Methylnaphthalene	12.12	142	31939	4.05	ng/ul	98
44) Dimethylphthalate	13.77	163	20156	1.96	ng/ul#	92
49) Acenaphthene	14.38	153	20030	2.39	ng/ul	93
53) Dibenzofuran	14.72	168	21267	1.77	ng/ul#	64
58) Fluorene	15.37	166	30789	3.08	ng/ul#	95
69) Phenanthrene	17.10	178	77616	5.10	ng/ul	97
76) Fluoranthene	19.12	202	31363	1.72	ng/ul	98
79) Pyrene	19.49	202	44826	2.35	ng/ul	99
82) Benzo(a)anthracene	21.24	228	25278	1.26	ng/ul#	86
84) Chrysene	21.29	228	28455	1.49	ng/ul#	93
87) Benzo(b)fluoranthene	22.81	252	60185	2.91	ng/ul#	96
90) Benzo(a)pyrene	23.37	252	55132	2.74	ng/ul	97
91) Indeno(1,2,3-cd)pyrene	25.71	276	67641	2.84	ng/ul#	92
93) Benzo(g,h,i)perylene	26.40	276	68115	3.40	ng/ul	96

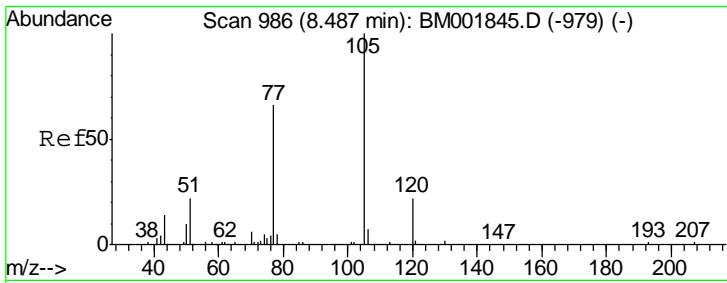
(#) = qualifier out of range (m) = manual integration (+) = signals summed

Data Path : Z:\HPCHEM1\BNA\_M\DATA\BM070615\  
 Data File : BM001839.D  
 Acq On : 06 Jul 2015 16:40  
 Operator : TP/UM  
 Sample : G2861-06  
 Misc :  
 ALS Vial : 10 Sample Multiplier: 1

Instrument :  
 BNA\_M  
 ClientSampled :  
 G93L2

Quant Time: Jul 07 05:25:18 2015  
 Quant Method : Z:\HPCHEM1\BNA\_M\METHODS\SOM02.2-EPA-BM061515.M  
 Quant Title : SVOA CALIBRATION  
 QLast Update : Tue Jul 07 04:02:33 2015  
 Response via : Initial Calibration

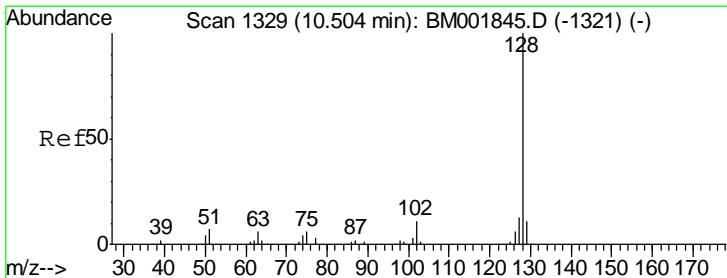
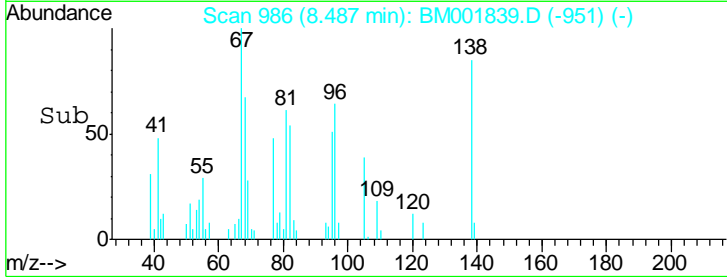
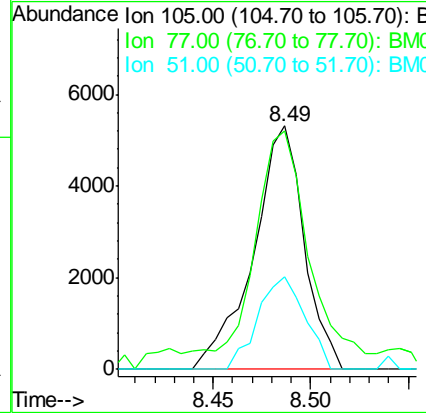
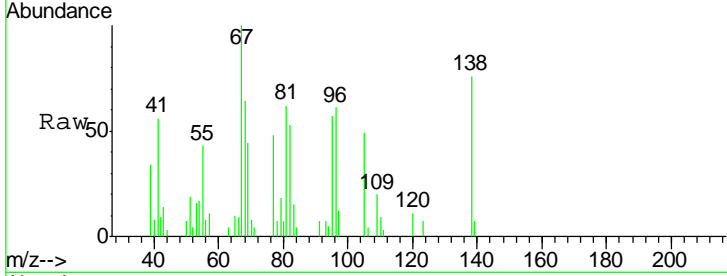




#14  
 Acetophenone  
 Concen: 1.72 ng/ul  
 RT: 8.49 min Scan# 986  
 Delta R.T. 0.01 min  
 Lab File: BM001839.D  
 Acq: 06 Jul 2015 16:40

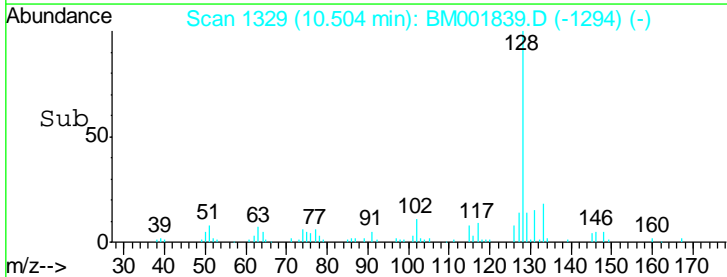
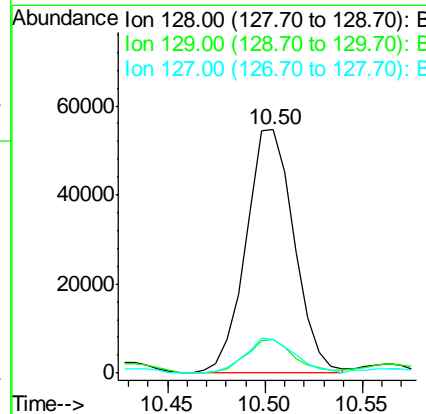
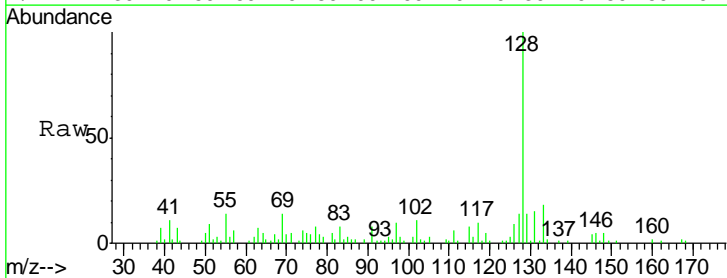
Instrument :  
 BNA\_M  
 ClientSampled :  
 G93L2

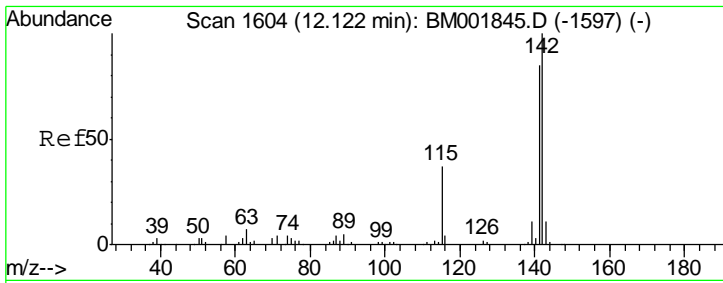
Tgt Ion	Resp	Lower	Upper
105	100		
77	98.0	64.2	96.4#
51	38.1	22.0	33.0#



#28  
 Naphthalene  
 Concen: 8.60 ng/ul  
 RT: 10.50 min Scan# 1329  
 Delta R.T. 0.01 min  
 Lab File: BM001839.D  
 Acq: 06 Jul 2015 16:40

Tgt Ion	Resp	Lower	Upper
128	100		
129	14.0	8.7	13.1#
127	13.8	10.0	15.0

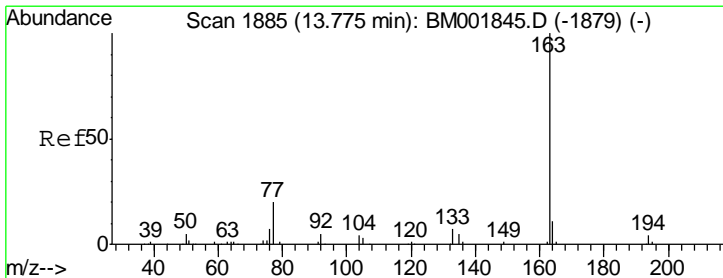
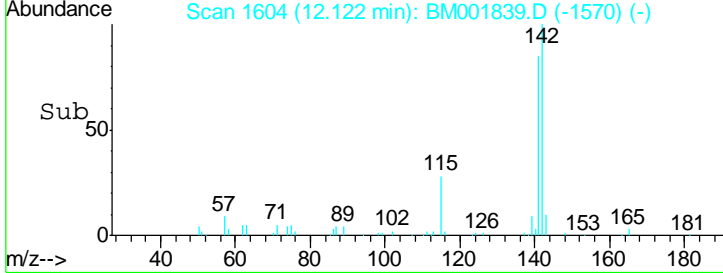
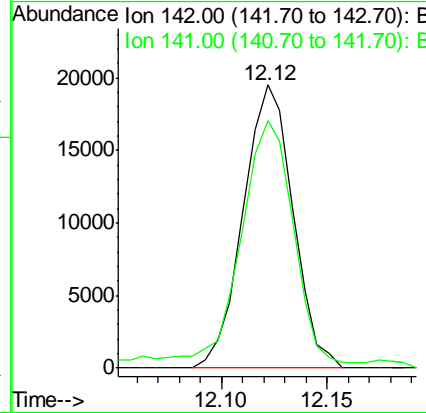
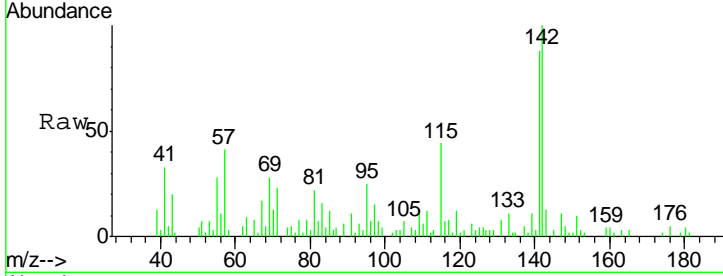




#34  
 2-Methylnaphthalene  
 Concen: 4.05 ng/ul  
 RT: 12.12 min Scan# 1604  
 Delta R.T. 0.00 min  
 Lab File: BM001839.D  
 Acq: 06 Jul 2015 16:40

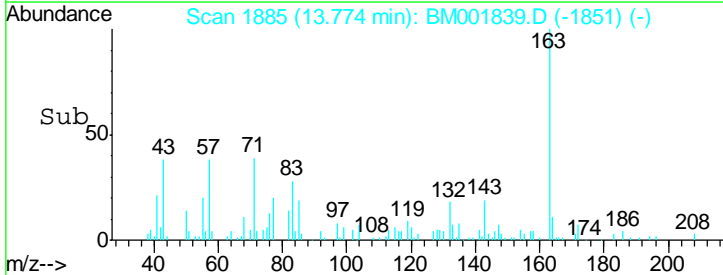
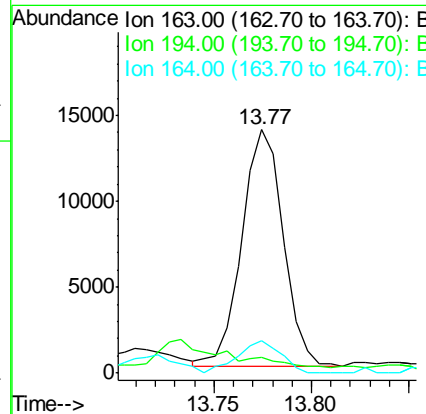
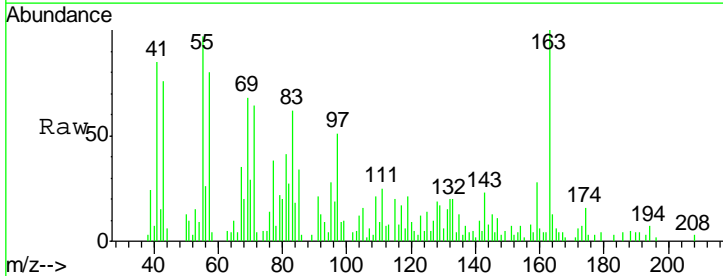
Instrument :  
 BNA\_M  
 ClientSampled :  
 G93L2

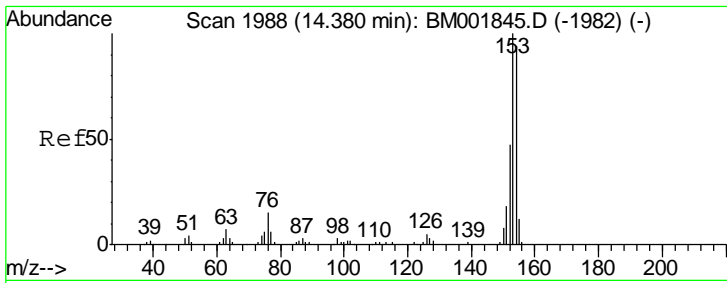
Tgt Ion: 142 Resp: 31939  
 Ion Ratio Lower Upper  
 142 100  
 141 87.7 71.6 107.4



#44  
 Dimethylphthalate  
 Concen: 1.96 ng/ul  
 RT: 13.77 min Scan# 1885  
 Delta R.T. 0.00 min  
 Lab File: BM001839.D  
 Acq: 06 Jul 2015 16:40

Tgt Ion: 163 Resp: 20156  
 Ion Ratio Lower Upper  
 163 100  
 194 6.7 3.6 5.4#  
 164 13.2 8.0 12.0#

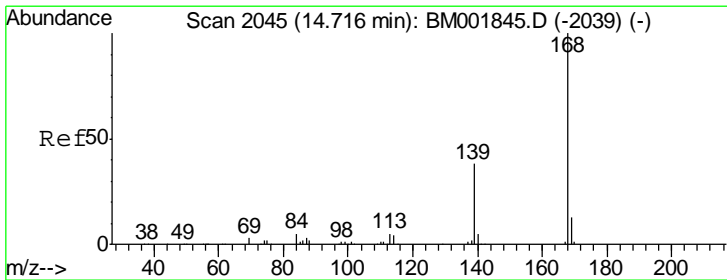
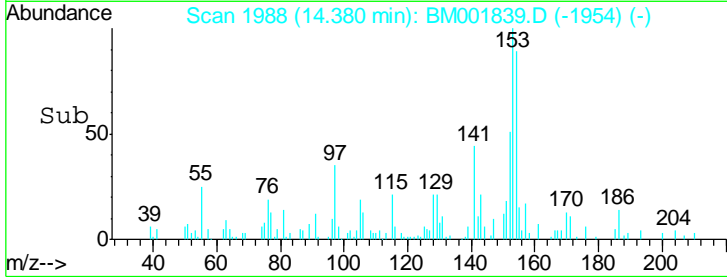
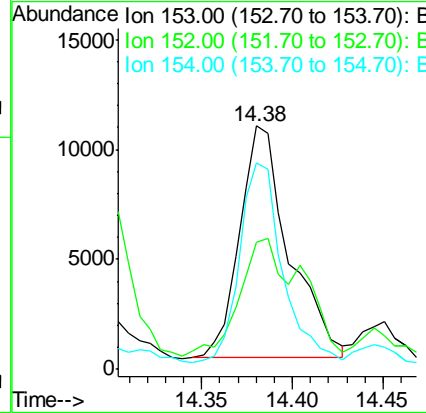
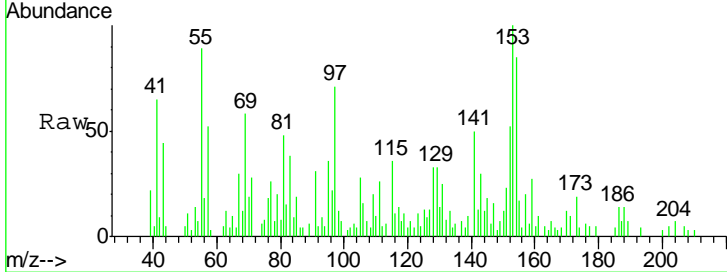




#49  
 Acenaphthene  
 Concen: 2.39 ng/ul  
 RT: 14.38 min Scan# 1988  
 Delta R.T. 0.00 min  
 Lab File: BM001839.D  
 Acq: 06 Jul 2015 16:40

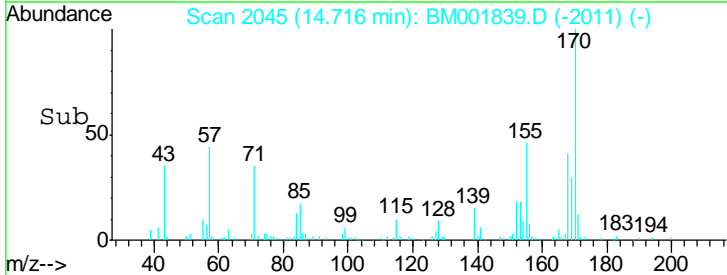
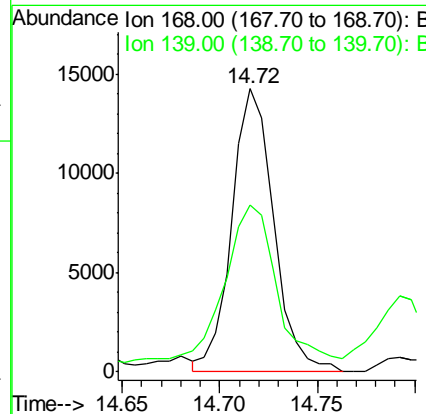
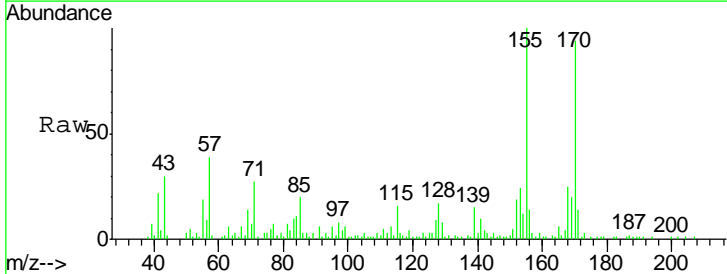
Instrument :  
 BNA\_M  
 ClientSampled :  
 G93L2

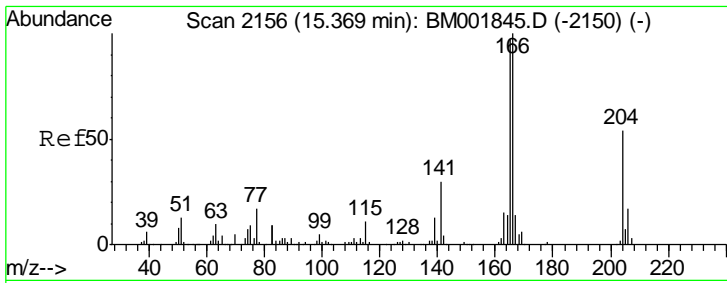
Tgt Ion	Resp	Lower	Upper
153	100		
152	52.1	36.6	55.0
154	85.0	72.6	108.8



#53  
 Dibenzofuran  
 Concen: 1.77 ng/ul  
 RT: 14.72 min Scan# 2045  
 Delta R.T. 0.00 min  
 Lab File: BM001839.D  
 Acq: 06 Jul 2015 16:40

Tgt Ion	Resp	Lower	Upper
168	100		
139	59.0	30.1	45.1#

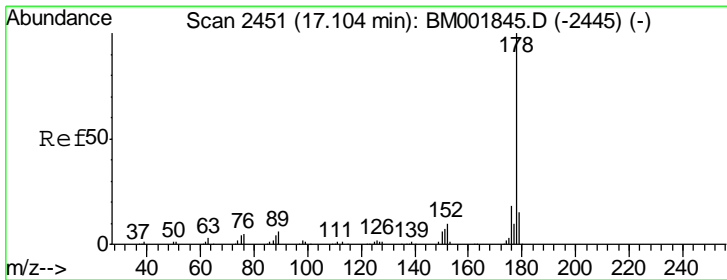
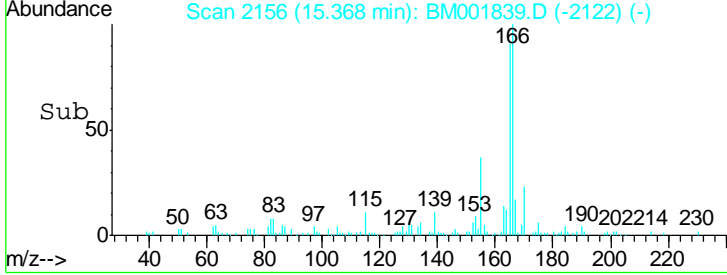
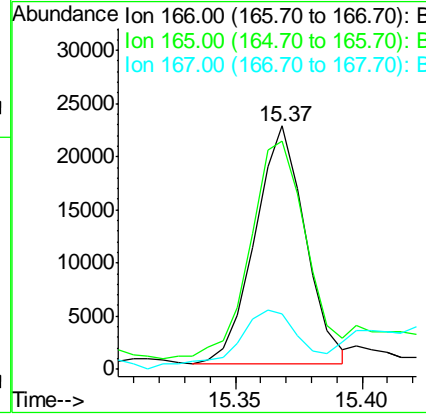
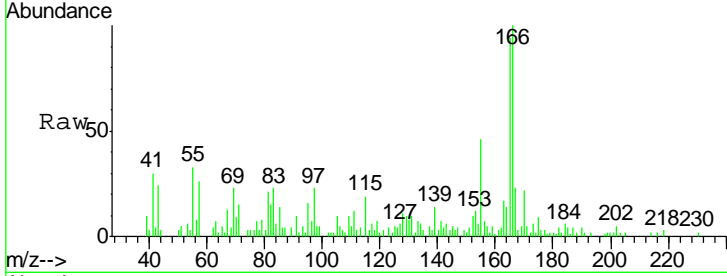




#58  
 Fluorene  
 Concen: 3.08 ng/ul  
 RT: 15.37 min Scan# 2156  
 Delta R.T. 0.00 min  
 Lab File: BM001839.D  
 Acq: 06 Jul 2015 16:40

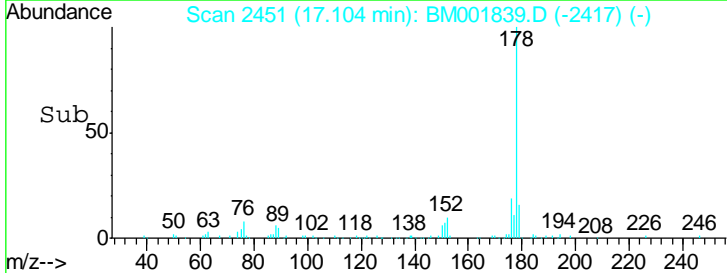
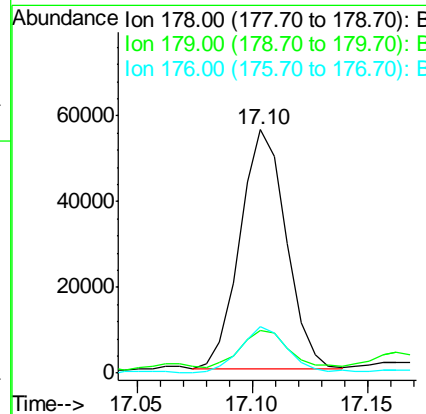
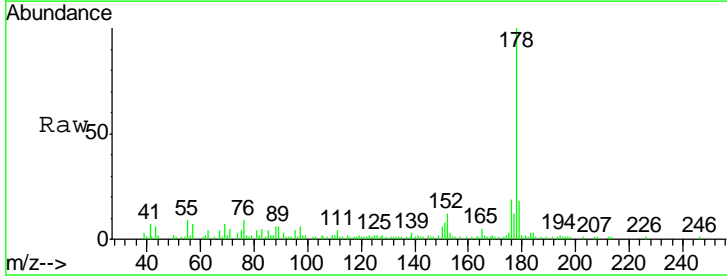
Instrument :  
 BNA\_M  
 ClientSampled :  
 G93L2

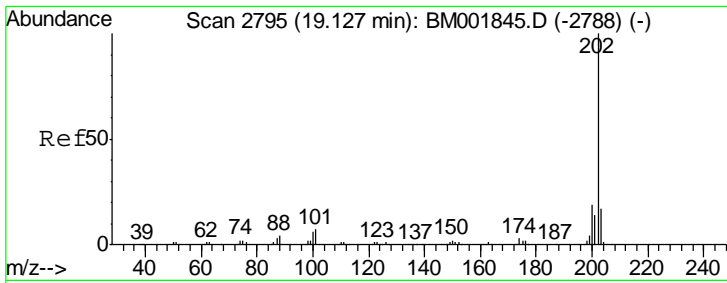
Tgt Ion	Resp	Lower	Upper
166	30789		
165	93.9	77.4	116.2
167	22.8	11.3	16.9#



#69  
 Phenanthrene  
 Concen: 5.10 ng/ul  
 RT: 17.10 min Scan# 2451  
 Delta R.T. 0.00 min  
 Lab File: BM001839.D  
 Acq: 06 Jul 2015 16:40

Tgt Ion	Resp	Lower	Upper
178	77616		
179	17.7	11.9	17.9
176	19.3	15.2	22.8

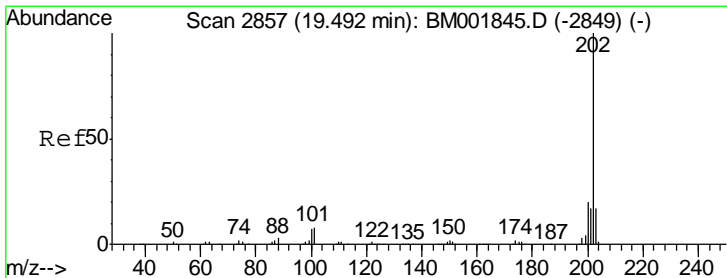
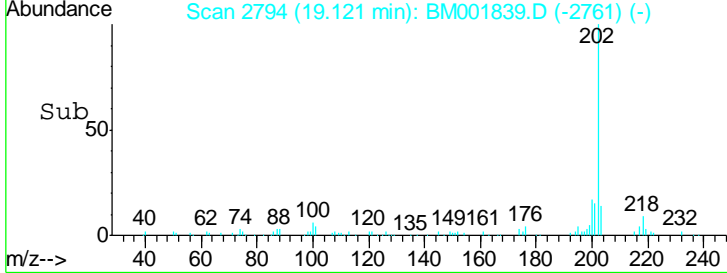
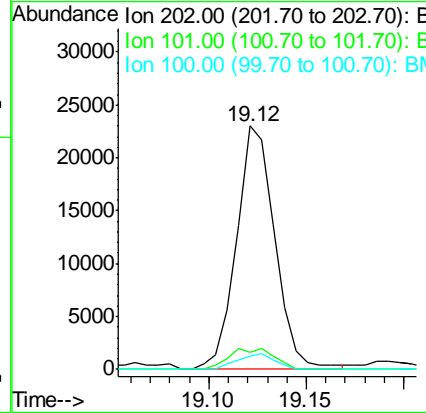
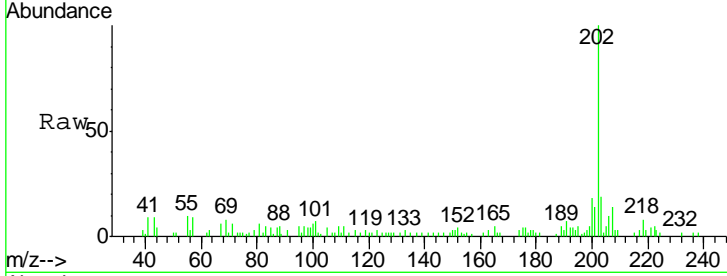




#76  
 Fluoranthene  
 Concen: 1.72 ng/ul  
 RT: 19.12 min Scan# 2794  
 Delta R.T. -0.01 min  
 Lab File: BM001839.D  
 Acq: 06 Jul 2015 16:40

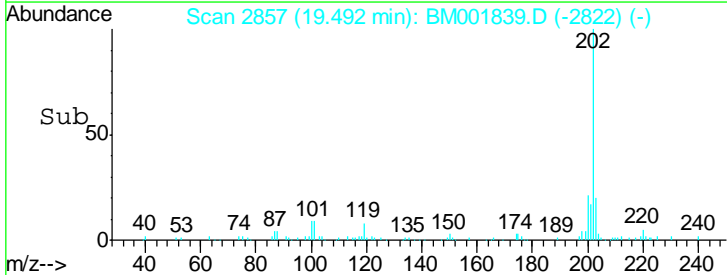
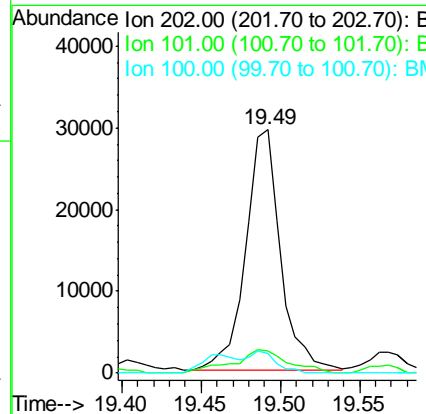
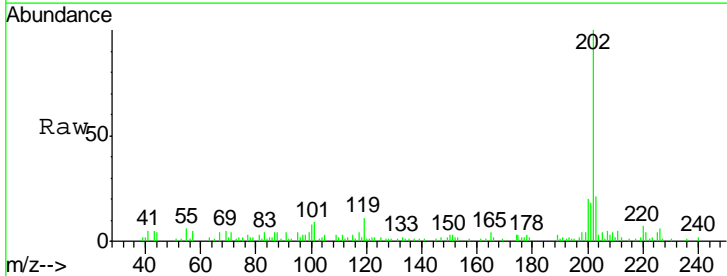
Instrument :  
 BNA\_M  
 ClientSampled :  
 G93L2

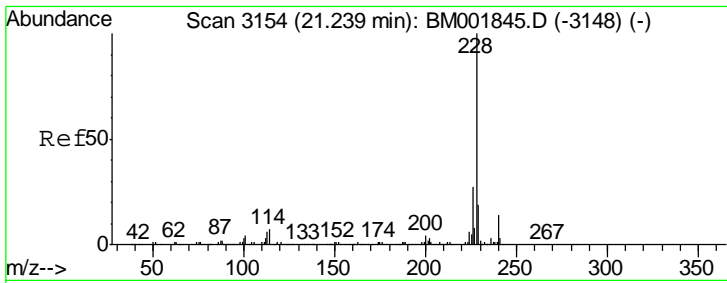
Tgt Ion	Resp	Lower	Upper
202	31363		
101	6.9	6.1	9.1
100	5.5	4.8	7.2



#79  
 Pyrene  
 Concen: 2.35 ng/ul  
 RT: 19.49 min Scan# 2857  
 Delta R.T. 0.01 min  
 Lab File: BM001839.D  
 Acq: 06 Jul 2015 16:40

Tgt Ion	Resp	Lower	Upper
202	44826		
101	8.9	6.9	10.3
100	8.2	6.2	9.2

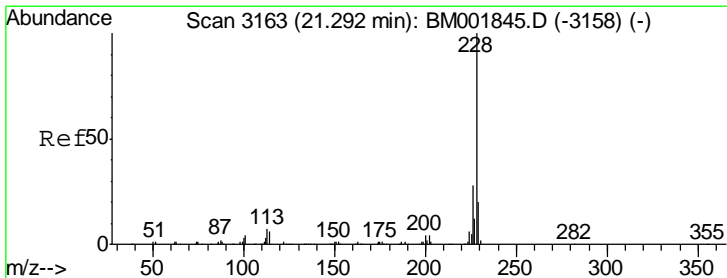
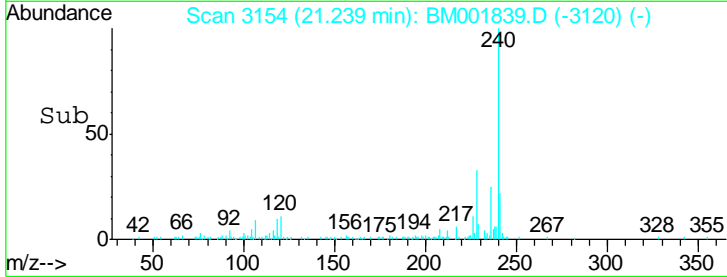
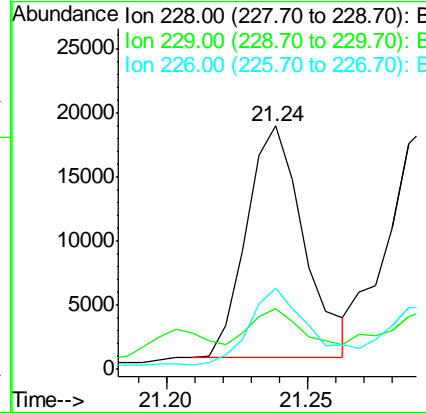
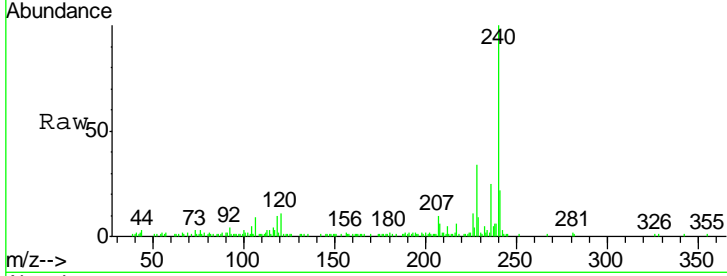




#82  
 Benzo(a)anthracene  
 Concen: 1.26 ng/ul  
 RT: 21.24 min Scan# 3154  
 Delta R.T. 0.00 min  
 Lab File: BM001839.D  
 Acq: 06 Jul 2015 16:40

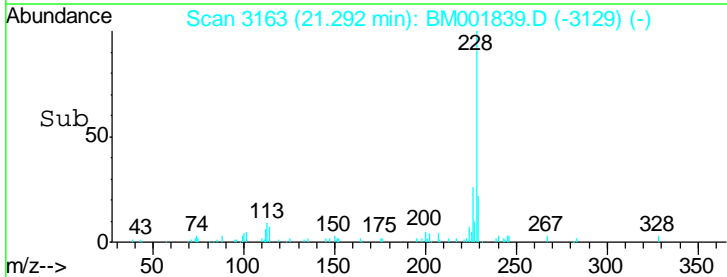
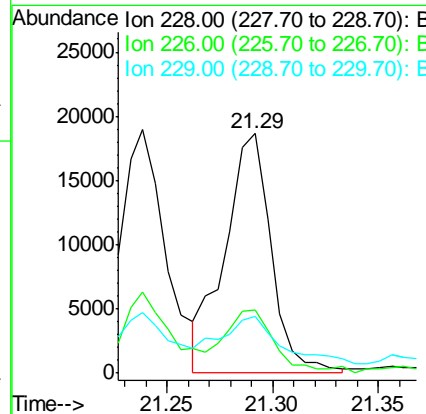
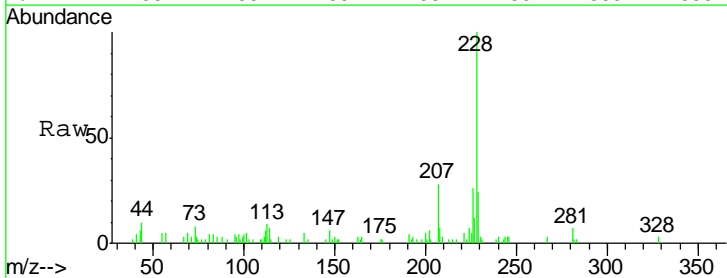
Instrument :  
 BNA\_M  
 ClientSampled :  
 G93L2

Tgt Ion	Resp	Lower	Upper
228	100		
229	25.1	15.4	23.0#
226	33.3	20.6	30.8#

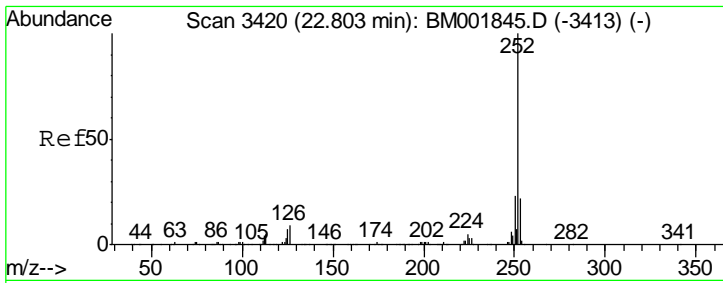


#84  
 Chrysene  
 Concen: 1.49 ng/ul  
 RT: 21.29 min Scan# 3163  
 Delta R.T. 0.00 min  
 Lab File: BM001839.D  
 Acq: 06 Jul 2015 16:40

Tgt Ion	Resp	Lower	Upper
228	100		
226	26.2	23.0	34.4
229	23.9	15.4	23.2#



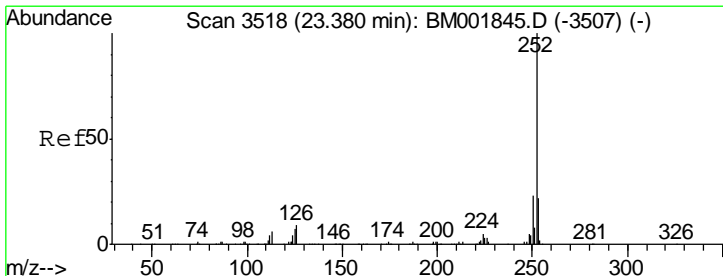
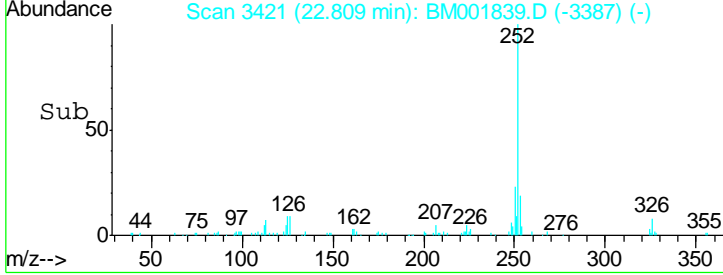
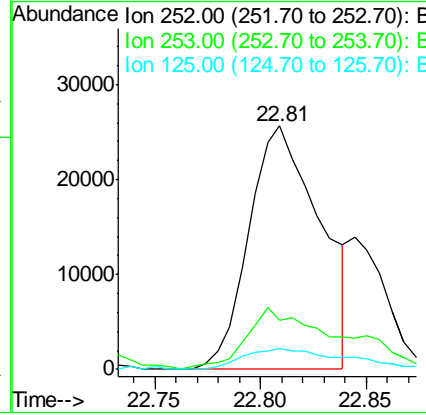
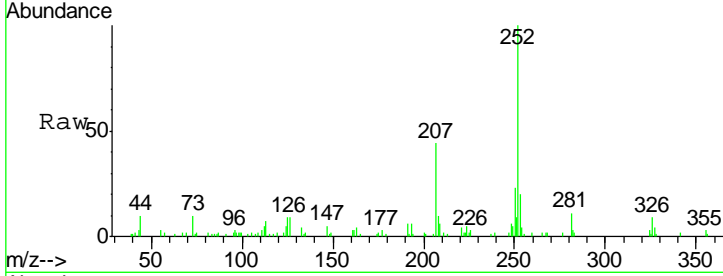




#87  
 Benzo(b)fluoranthene  
 Concen: 2.91 ng/ul  
 RT: 22.81 min Scan# 3421  
 Delta R.T. 0.00 min  
 Lab File: BM001839.D  
 Acq: 06 Jul 2015 16:40

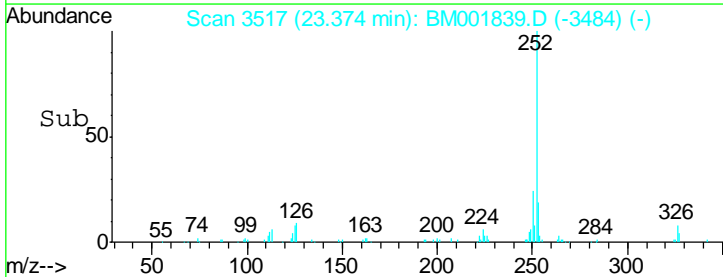
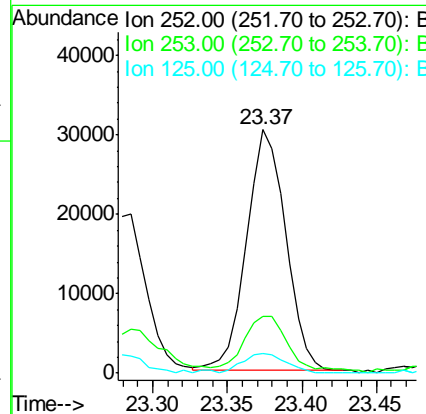
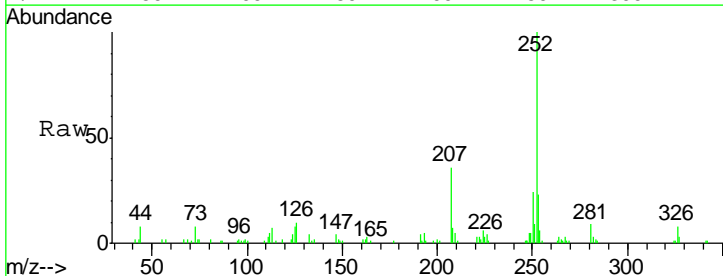
Instrument :  
 BNA\_M  
 ClientSampled :  
 G93L2

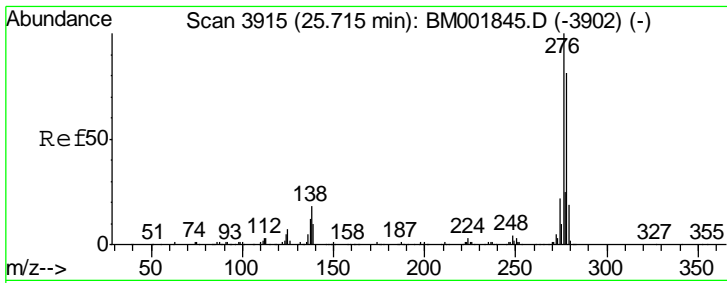
Tgt Ion	Resp	Lower	Upper
252	60185		
253	20.3	17.8	26.6
125	8.6	5.3	7.9#



#90  
 Benzo(a)pyrene  
 Concen: 2.74 ng/ul  
 RT: 23.37 min Scan# 3517  
 Delta R.T. -0.01 min  
 Lab File: BM001839.D  
 Acq: 06 Jul 2015 16:40

Tgt Ion	Resp	Lower	Upper
252	55132		
253	23.2	17.4	26.0
125	8.2	6.0	9.0

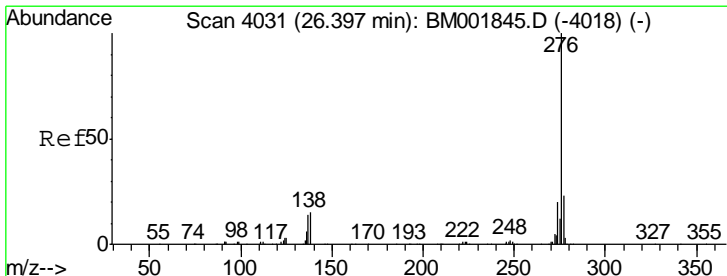
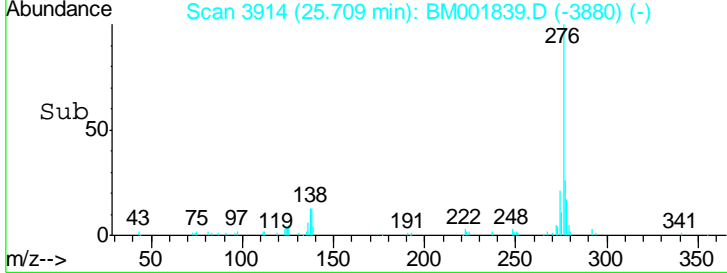
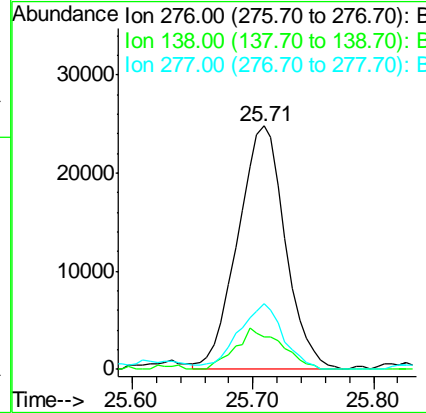
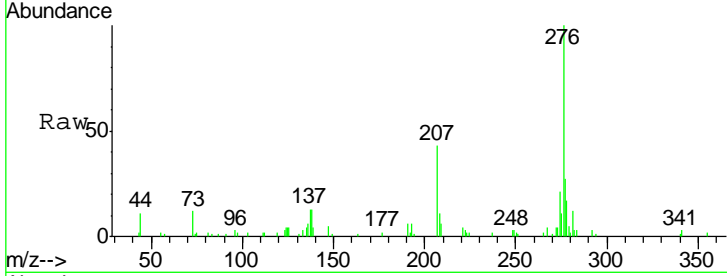




#91  
 Indeno(1,2,3-cd)pyrene  
 Concen: 2.84 ng/ul  
 RT: 25.71 min Scan# 3914  
 Delta R.T. 0.00 min  
 Lab File: BM001839.D  
 Acq: 06 Jul 2015 16:40

Instrument :  
 BNA\_M  
 ClientSampled :  
 G93L2

Tgt Ion	Resp	Lower	Upper
276	67641		
138	13.1	14.7	22.1#
277	26.9	19.7	29.5



#93  
 Benzo(g,h,i)perylene  
 Concen: 3.40 ng/ul  
 RT: 26.40 min Scan# 4031  
 Delta R.T. -0.01 min  
 Lab File: BM001839.D  
 Acq: 06 Jul 2015 16:40

Tgt Ion	Resp	Lower	Upper
276	68115		
138	16.4	12.6	19.0
277	25.9	18.7	28.1

