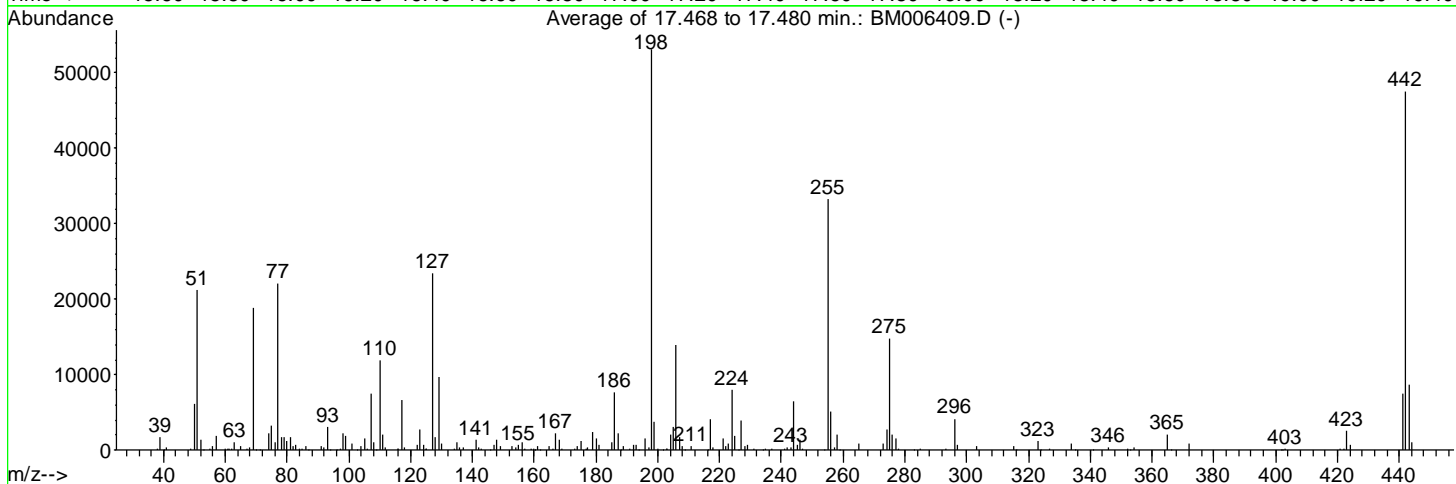
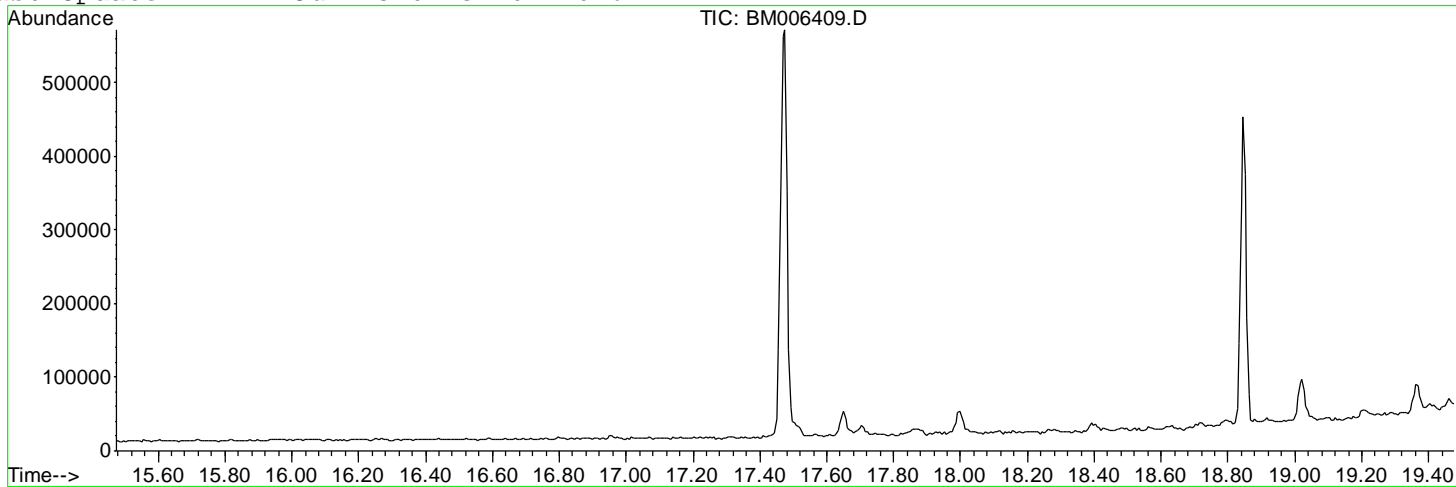


Data Path : Z:\HPCHEM1\BNA M\DATA\BM071416\
 Data File : BM006409.D
 Acq On : 14 Jul 2016 11:37
 Operator : UM/SJ
 Sample : DFTPP50
 Misc :
 ALS Vial : 1 Sample Multiplier: 1

Instrument :
 BNA_M
 ClientSampleId :
 DFTPP50

Integration File: LSCINT.P

Method : Z:\HPCHEM1\BNA M\METHODS\SOM02.2-EPA-BM071416.M
 Title : SVOA CALIBRATION
 Last Update : Fri Jul 15 04:34:07 2016



AutoFind: Scans 2530, 2531, 2532; Background Corrected with Scan 2524

Target Mass	Rel. to Mass	Lower Limit%	Upper Limit%	Rel. Abn%	Raw Abn	Result Pass/Fail
51	198	10	80	40.0	21220	PASS
68	69	0.00	2	1.9	360	PASS
69	198	0.00	100	35.6	18865	PASS
70	69	0.00	2	0.6	114	PASS
127	198	10	80	44.1	23409	PASS
197	198	0.00	2	0.7	380	PASS
198	198	100	100	100.0	53066	PASS
199	198	5	9	7.2	3809	PASS
275	198	10	60	27.9	14790	PASS
365	198	1	100	4.0	2120	PASS
441	443	0.01	100	86.5	7586	PASS
442	198	50	100	89.6	47568	PASS
443	442	15	24	18.4	8768	PASS

m/z	Abundance
39.00	527.0
39.90	667.0
41.00	1452.0
42.00	586.0
43.00	2252.0
44.00	1639.0
45.00	1096.0
46.90	306.0
49.00	1449.0
50.90	654.0
55.10	1016.0
56.00	596.0
57.00	1301.0
60.00	745.0
69.00	511.0
73.00	1199.0
77.00	415.0
79.10	309.0
83.90	899.0
85.00	318.0
85.90	565.0
123.10	311.0
166.90	523.0
207.00	735.0

Instrument :
BNA_M
ClientSampleId :
DFTPP50

m/z	Abundance
38.20	330.0
39.00	2704.0
40.00	755.0
41.10	1864.0
42.10	545.0
43.00	2124.0
44.00	1395.0
45.00	1004.0
47.00	327.0
48.90	1528.0
50.00	7868.0
51.00	28504.0
52.00	1499.0
55.10	1148.0
56.10	1299.0
57.00	3310.0
60.00	1047.0
60.90	675.0
61.90	530.0
63.00	1355.0
65.00	676.0
67.10	323.0
67.90	486.0
69.00	24232.0
73.00	964.0
74.00	2783.0
75.00	4371.0
76.00	1339.0
77.00	28680.0
78.00	2295.0
79.00	2407.0
80.00	1564.0
81.00	2235.0
82.00	602.0
83.00	714.0
83.90	980.0
85.00	750.0
85.90	1351.0
91.00	720.0
91.90	740.0
93.00	3982.0
96.00	399.0
98.00	2880.0
99.00	2339.0
101.00	1275.0
102.80	338.0
104.00	874.0
105.00	1345.0
106.00	391.0
107.00	9056.0
108.00	1131.0
110.00	15441.0
111.00	2266.0
112.00	383.0
115.90	606.0
117.00	7905.0
118.00	445.0
121.90	752.0
123.00	3322.0
124.00	601.0
124.90	719.0
127.00	27784.0
128.00	1980.0
129.00	11933.0
130.00	1208.0
134.00	310.0
135.00	1446.0
136.00	358.0
137.00	715.0
141.00	1964.0
142.00	657.0
142.90	314.0
145.90	377.0
147.00	815.0
148.00	1512.0
149.00	489.0
152.90	452.0
154.10	308.0
155.00	673.0
156.00	1216.0
157.00	429.0
158.80	408.0
159.90	361.0
160.90	498.0
164.90	594.0
165.90	486.0
167.00	2912.0
168.00	1562.0
169.00	379.0
173.00	581.0
174.00	612.0
175.00	1518.0

Instrument :
BNA_M
ClientSampleId :
DFTPP50

176.90	589.0
179.00	2937.0
180.00	1809.0
181.00	891.0
185.00	1507.0
186.00	8633.0
187.00	2713.0
188.90	516.0
191.90	874.0
193.00	859.0
194.00	302.0
195.90	1492.0
197.10	498.0
198.00	61416.0
198.90	4321.0
200.10	511.0
201.70	362.0
202.90	425.0
204.00	2246.0
205.00	3545.0
206.00	16968.0
207.00	3005.0
207.90	555.0
208.90	324.0
211.00	562.0
217.00	5123.0
218.00	654.0
221.00	1689.0
222.00	471.0
223.00	882.0
224.00	8885.0
225.00	2262.0
226.00	303.0
227.00	4680.0
228.10	508.0
229.00	620.0
231.00	311.0
237.00	459.0
241.90	397.0
243.00	578.0
244.00	7104.0
245.00	651.0
246.00	1468.0
254.00	339.0
255.00	35992.0
256.00	5483.0
257.00	436.0
258.00	2517.0
265.00	1032.0
273.00	662.0
274.00	2977.0
275.00	16504.0
276.00	2662.0
277.00	1604.0
278.00	467.0
283.00	336.0
284.90	369.0
296.00	4261.0
296.90	793.0
303.00	500.0
315.10	672.0
323.00	1443.0
324.00	312.0
333.90	543.0
335.00	308.0
345.90	400.0
352.10	410.0
354.10	347.0
365.00	1621.0
372.00	963.0
401.90	309.0
421.00	345.0
422.00	356.0
423.00	2250.0
424.10	595.0
441.00	6633.0
442.10	44008.0
443.10	9080.0
444.00	969.0

Instrument :
BNA_M
ClientSampleId :
DFTPP50

m/z	Abundance
38.10	378.0
39.00	2544.0
39.90	693.0
41.00	1851.0
42.00	401.0
43.10	2235.0
44.00	1580.0
45.00	915.0
49.00	1658.0
50.00	6903.0
51.00	24056.0
52.00	1544.0
53.00	345.0
55.00	1037.0
56.00	1214.0
57.00	3846.0
59.90	863.0
61.10	489.0
63.00	1090.0
64.90	607.0
68.00	596.0
69.00	22072.0
73.00	1030.0
74.00	2808.0
75.00	3576.0
76.00	1367.0
77.00	25160.0
78.00	2032.0
79.00	2380.0
79.90	1267.0
81.00	1909.0
82.00	520.0
82.90	670.0
83.90	1060.0
85.00	533.0
85.90	1025.0
87.00	335.0
90.90	443.0
91.90	436.0
93.00	3289.0
94.00	377.0
97.10	366.0
98.00	2810.0
99.00	2226.0
100.90	938.0
103.90	464.0
105.00	1699.0
107.00	8620.0
108.00	1141.0
108.90	300.0
110.00	12571.0
111.00	2381.0
111.90	311.0
116.10	556.0
117.00	7677.0
118.00	557.0
121.90	655.0
123.00	2808.0
124.00	827.0
125.10	461.0
127.00	27432.0
128.00	2148.0
129.00	10638.0
130.00	1065.0
133.90	352.0
135.00	1247.0
135.90	519.0
137.10	629.0
141.00	1507.0
141.90	547.0
143.00	444.0
146.90	1057.0
148.00	2070.0
149.00	735.0
152.90	778.0
154.00	319.0
155.00	925.0
156.00	1506.0
159.90	308.0
161.00	819.0
164.90	588.0
166.00	405.0
167.00	3654.0
168.00	1719.0
173.90	827.0
175.00	1694.0
177.10	609.0
178.90	2525.0
180.00	1828.0
181.00	858.0
185.00	1147.0
186.00	8881.0

Instrument :
BNA_M
ClientSampleId :
DFTPP50

187.00	2724.0
187.90	343.0
189.00	726.0
191.00	421.0
192.00	828.0
192.90	745.0
195.90	2003.0
196.90	643.0
198.00	61928.0
198.90	4430.0
199.90	379.0
203.10	556.0
204.00	2490.0
205.00	3812.0
206.00	16285.0
207.00	2899.0
208.00	698.0
211.00	605.0
216.90	4607.0
217.90	697.0
221.00	2102.0
222.00	674.0
223.00	1120.0
224.00	9509.0
225.00	2353.0
227.00	4673.0
228.00	729.0
229.00	687.0
231.00	327.0
233.90	380.0
234.90	413.0
237.00	360.0
241.10	451.0
242.00	715.0
243.00	664.0
244.00	7593.0
245.00	1004.0
246.00	1632.0
247.00	448.0
255.00	40112.0
256.00	6425.0
257.10	442.0
258.00	2211.0
265.00	895.0
273.00	1002.0
274.00	3208.0
275.00	16808.0
276.00	2456.0
276.90	1552.0
285.00	384.0
293.10	349.0
296.00	5095.0
297.00	1093.0
303.00	682.0
315.00	508.0
323.10	1335.0
327.00	514.0
334.00	1112.0
341.00	321.0
346.00	408.0
352.00	456.0
353.10	351.0
354.10	549.0
364.90	2808.0
366.00	305.0
372.00	708.0
402.10	399.0
402.90	526.0
421.00	449.0
422.10	366.0
423.00	2926.0
424.00	763.0
441.10	9003.0
442.10	55968.0
443.00	9741.0
444.00	1332.0

Instrument :
BNA_M
ClientSampleId :
DFTPP50

m/z	Abundance
39.10	1406.0
39.90	701.0
41.10	1895.0
42.00	672.0
43.00	2208.0
44.00	1777.0
45.00	921.0
47.00	360.0
49.00	1864.0
50.00	3916.0
51.00	13064.0
51.90	1060.0
55.00	1309.0
56.00	813.0
57.00	2512.0
60.00	1142.0
63.10	603.0
64.90	310.0
67.00	339.0
69.00	11824.0
70.00	342.0
71.10	363.0
73.10	1117.0
74.00	1052.0
75.00	2056.0
76.00	664.0
77.00	13542.0
78.00	1156.0
79.00	1296.0
80.00	1009.0
81.00	1269.0
82.00	342.0
82.90	592.0
83.90	1102.0
85.00	410.0
85.90	955.0
90.90	606.0
93.00	2195.0
97.10	367.0
98.00	1200.0
99.00	1330.0
101.10	624.0
104.00	505.0
105.00	1495.0
105.90	340.0
107.00	4647.0
108.00	798.0
110.00	7739.0
111.00	1356.0
112.00	323.0
117.00	4543.0
118.00	323.0
122.00	535.0
123.10	3325.0
124.00	795.0
127.00	15011.0
128.00	1274.0
129.00	6395.0
130.00	547.0
134.90	644.0
136.00	301.0
140.90	835.0
147.10	418.0
148.00	717.0
149.00	335.0
153.00	448.0
153.90	368.0
155.00	413.0
156.10	533.0
160.10	336.0
161.00	483.0
162.00	300.0
165.00	499.0
167.00	1996.0
168.00	1148.0
168.90	325.0
173.00	308.0
174.10	419.0
175.10	657.0
177.00	460.0
179.00	1936.0
180.00	1235.0
181.00	526.0
185.00	704.0
186.00	5472.0
187.00	1353.0
189.00	458.0
190.90	344.0
192.00	462.0
193.00	627.0
195.80	1014.0
198.00	35856.0

Instrument :
BNA_M
ClientSampleId :
DFTPP50

199.00	2676.0
204.00	1480.0
204.90	2081.0
206.00	8838.0
207.00	1522.0
207.90	483.0
210.80	325.0
216.00	349.0
217.00	2681.0
220.90	1188.0
221.90	365.0
223.00	508.0
224.00	5742.0
225.00	1276.0
227.00	2411.0
228.00	377.0
229.00	814.0
244.10	4797.0
245.00	655.0
246.00	1071.0
247.00	337.0
255.00	23520.0
256.00	3277.0
257.10	306.0
258.00	1386.0
259.00	306.0
265.00	602.0
272.90	836.0
274.00	1983.0
275.00	11058.0
276.00	1278.0
276.90	1317.0
293.00	357.0
296.00	3241.0
297.00	321.0
303.00	394.0
314.90	386.0
316.00	306.0
323.00	1118.0
334.00	986.0
345.90	312.0
354.10	481.0
364.90	1933.0
372.00	779.0
423.00	2380.0
424.00	698.0
441.00	7123.0
442.10	42728.0
443.00	7484.0
444.10	769.0

Instrument :
BNA_M
ClientSampleId :
DFTPP50