

Data Path : Z:\HPCHEM1\BNA M\DATA\BM071616\
 Data File : BM006482.D
 Acq On : 16 Jul 2016 16:59
 Operator : UM/SJ
 Sample : H3959-16
 Misc :
 ALS Vial : 12 Sample Multiplier: 1

Instrument :
 BNA_M
 ClientSampleId :

Quant Time: Jul 18 06:18:12 2016
 Quant Method : Z:\HPCHEM1\BNA M\METHODS\SOM02.2-EPA-BM071416.M
 Quant Title : SVOA CALIBRATION
 QLast Update : Fri Jul 15 23:20:22 2016
 Response via : Initial Calibration

Internal Standards	R.T.	QIon	Response	Conc	Units	Dev(Min)
1) 1,4-Dichlorobenzene-d4	7.62	152	129801	20.00	ng/ul	0.00
18) Naphthalene-d8	10.39	136	608685	20.00	ng/ul	0.00
35) Acenaphthene-d10	14.27	164	362993	20.00	ng/ul	0.00
61) Phenanthrene-d10	17.02	188	845148	20.00	ng/ul	0.00
75) Chrysene-d12	21.22	240	1014974	20.00	ng/ul	-0.01
83) Perylene-d12	23.41	264	1065479	20.00	ng/ul	-0.02

System Monitoring Compounds

3) 1,4-Dioxane-d8	3.13	96	7389	2.40	ng/uL	0.00
5) Phenol-d5	6.79	99	334914	31.48	ng/ul	0.00
7) Bis-(2-Chloroethyl)ether-d	6.96	67	221997	34.41	ng/ul	0.00
9) 2-Chlorophenol-d4	7.15	132	274939	31.90	ng/ul	0.00
13) 4-Methylphenol-d8	8.33	113	275064	32.54	ng/ul	0.00
19) Nitrobenzene-d5	8.77	128	136284	29.54	ng/ul	0.00
22) 2-Nitrophenol-d4	9.49	143	146053	28.00	ng/ul	0.00
26) 2,4-Dichlorophenol-d3	10.02	165	259786	26.40	ng/ul	0.00
29) 4-Chloroaniline-d4	10.54	131	345084	33.55	ng/ul	0.00
43) Dimethylphthalate-d6	13.68	166	856442	28.83	ng/ul	0.00
46) Acenaphthylene-d8	13.96	160	1055235	28.73	ng/ul	0.00
51) 4-Nitrophenol-d4	14.49	143	112870	21.87	ng/ul	0.00
57) Fluorene-d10	15.26	176	743214	28.14	ng/ul	0.00
62) 4,6-Dinitro-2-methylphenol	15.40	200	88453	18.09	ng/ul	0.00
70) Anthracene-d10	17.12	188	1155590	28.93	ng/ul	0.00
76) Pyrene-d10	19.42	212	1366252	29.69	ng/ul	0.00
87) Benzo(a)pyrene-d12	23.27	264	1478557	30.35	ng/ul	-0.01

Target Compounds

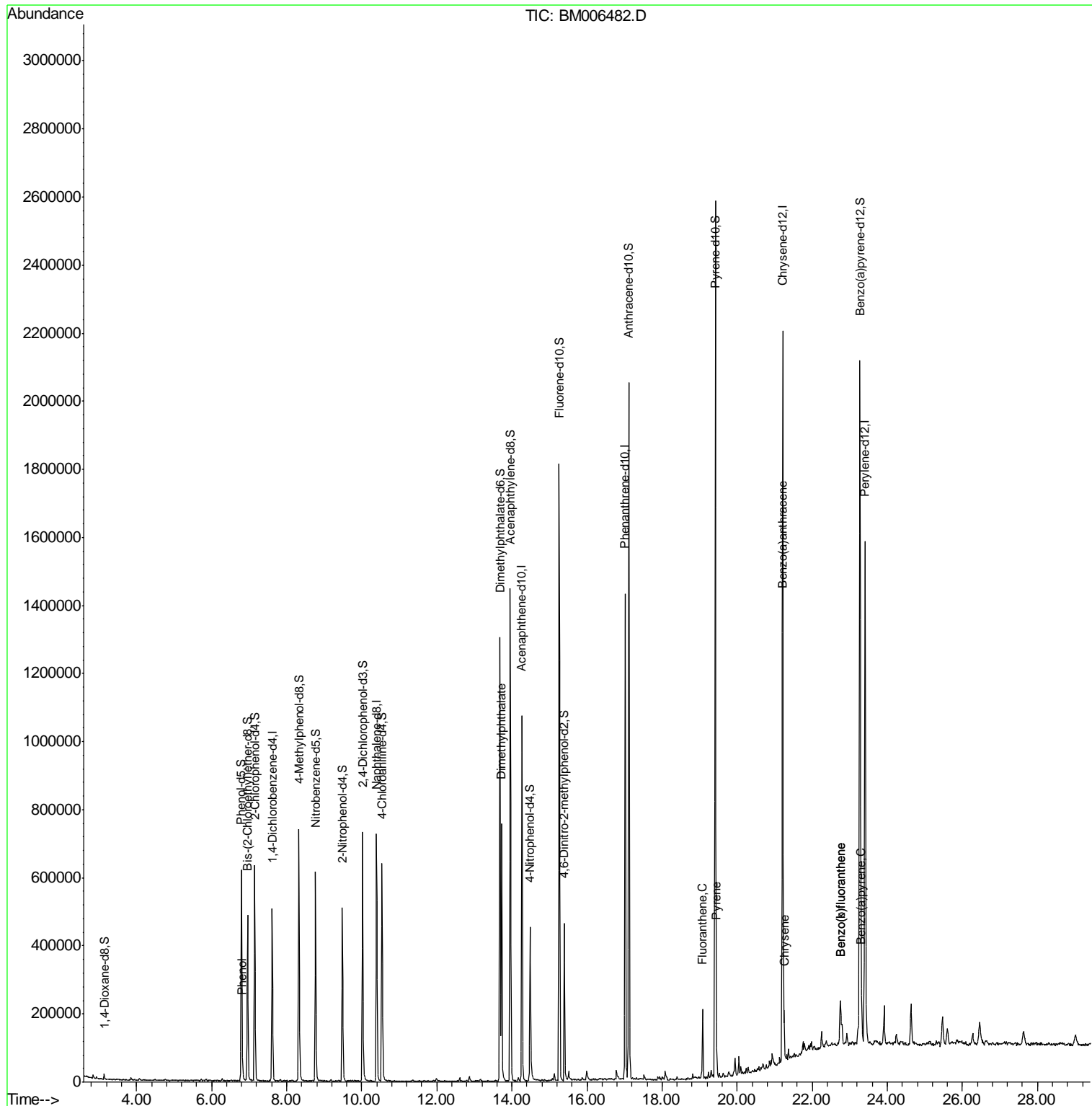
Target Compounds	R.T.	QIon	Response	Conc	Units	Ovalue
6) Phenol	6.82	94	15630	1.39	ng/ul	89
44) Dimethylphthalate	13.73	163	458075	15.20	ng/ul	99
74) Fluoranthene	19.08	202	114641	2.12	ng/ul	97
77) Pyrene	19.44	202	106529	1.76	ng/ul	98
80) Benzo(a)anthracene	21.20	228	78906	1.27	ng/ul	96
82) Chrysene	21.25	228	74785	1.28	ng/ul	96
85) Benzo(b)fluoranthene	22.76	252	93356	1.47	ng/ul#	96
86) Benzo(k)fluoranthene	22.76	252	93356	1.56	ng/ul#	96
88) Benzo(a)pyrene	23.32	252	76658	1.26	ng/ul#	96

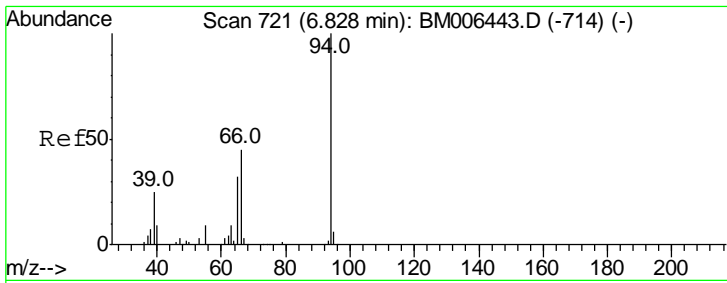
(#) = qualifier out of range (m) = manual integration (+) = signals summed

Data Path : Z:\HPCHEM1\BNA M\DATA\BM071616\
 Data File : BM006482.D
 Acq On : 16 Jul 2016 16:59
 Operator : UM/SJ
 Sample : H3959-16
 Misc :
 ALS Vial : 12 Sample Multiplier: 1

Instrument :
 BNA_M
 ClientSampled :

Quant Time: Jul 18 06:18:12 2016
 Quant Method : Z:\HPCHEM1\BNA M\METHODS\SOM02.2-EPA-BM071416.M
 Quant Title : SVOA CALIBRATION
 QLast Update : Fri Jul 15 23:20:22 2016
 Response via : Initial Calibration

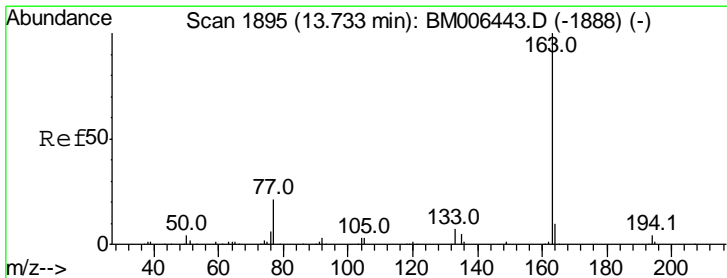
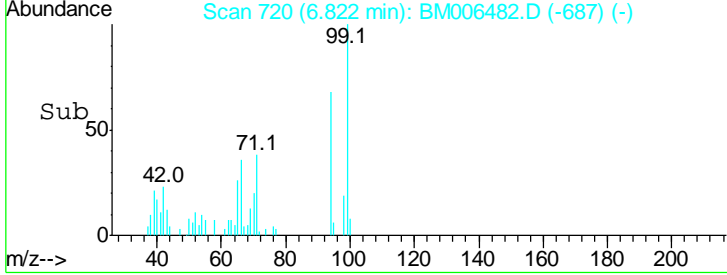
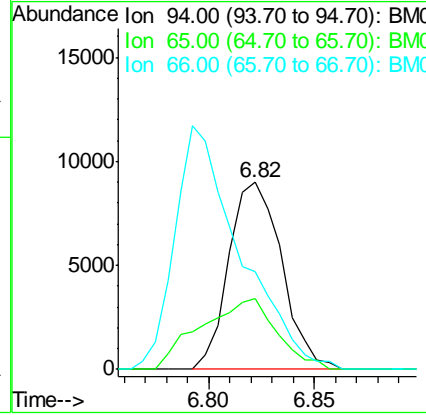
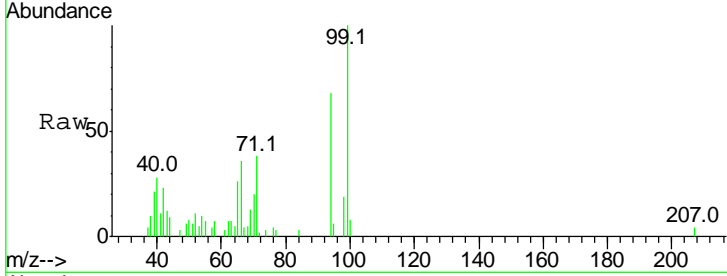




#6
 Phenol
 Concen: 1.39 ng/ul
 RT: 6.82 min Scan# 720
 Delta R.T. -0.01 min
 Lab File: BM006482.D
 Acq: 16 Jul 2016 16:59

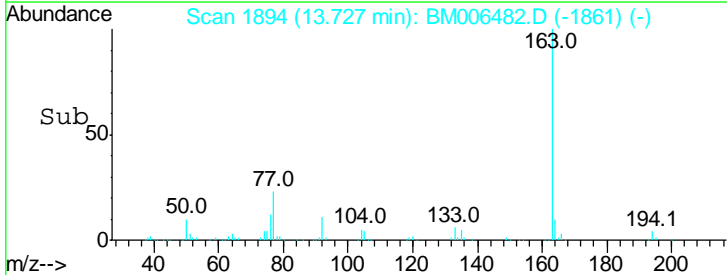
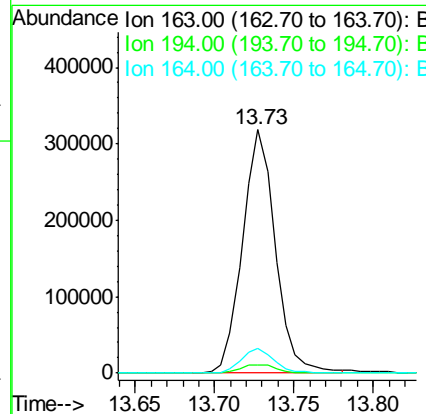
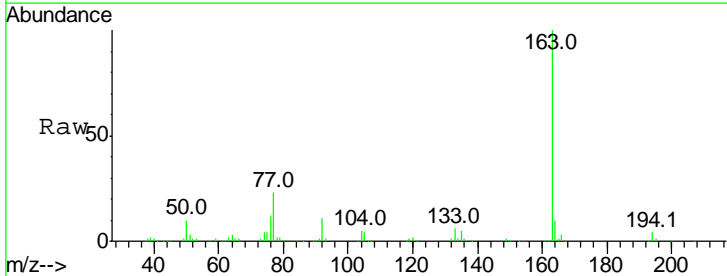
Instrument :
 BNA_M
 ClientSampled :

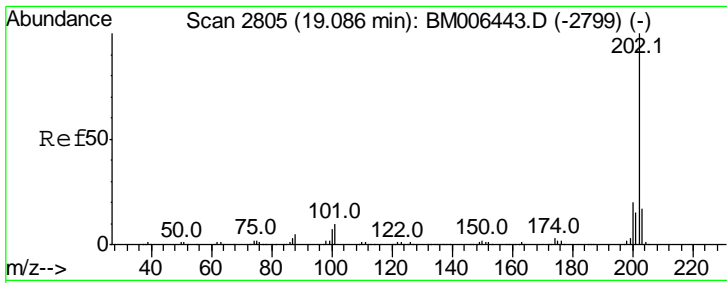
Tgt Ion	Resp	Lower	Upper
94	15630		
65	37.9	25.8	38.8
66	52.3	35.7	53.5



#44
 Dimethylphthalate
 Concen: 15.20 ng/ul
 RT: 13.73 min Scan# 1894
 Delta R.T. -0.01 min
 Lab File: BM006482.D
 Acq: 16 Jul 2016 16:59

Tgt Ion	Resp	Lower	Upper
163	458075		
194	3.6	3.4	5.0
164	9.9	7.8	11.8

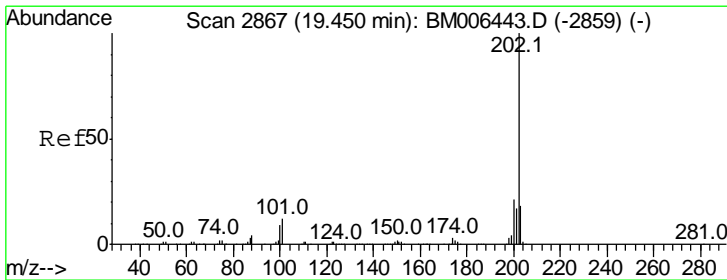
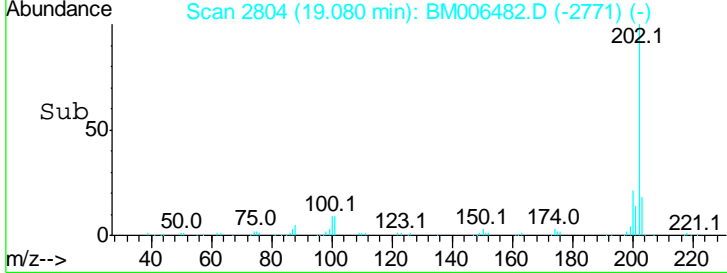
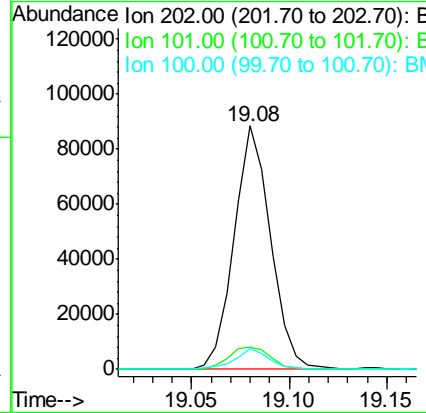
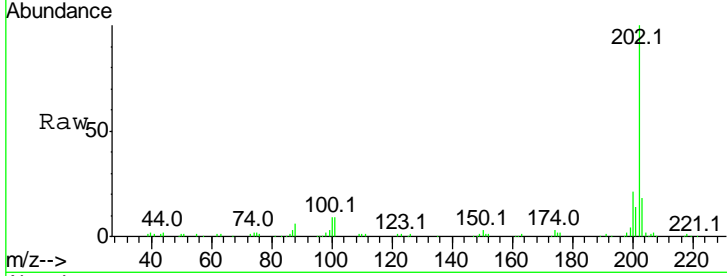




#74
 Fluoranthene
 Concen: 2.12 ng/ul
 RT: 19.08 min Scan# 2804
 Delta R.T. -0.01 min
 Lab File: BM006482.D
 Acq: 16 Jul 2016 16:59

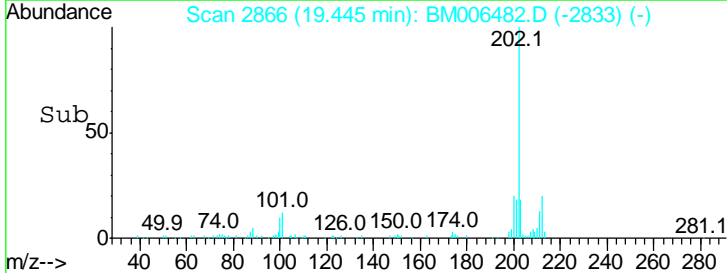
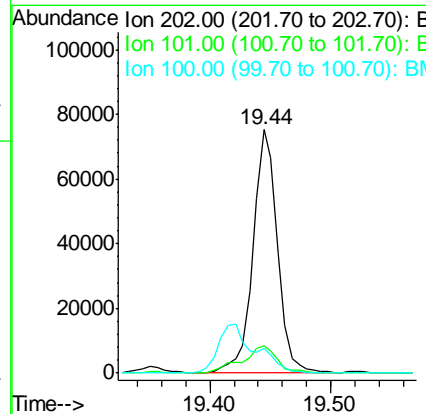
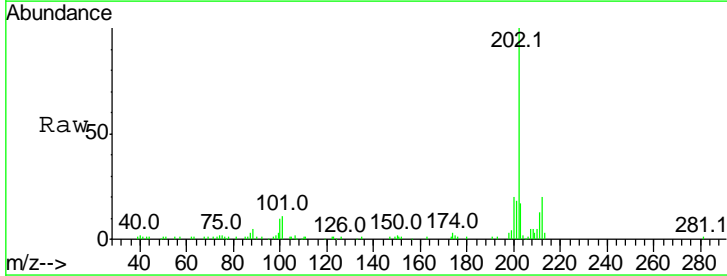
Instrument :
 BNA_M
 ClientSampled :

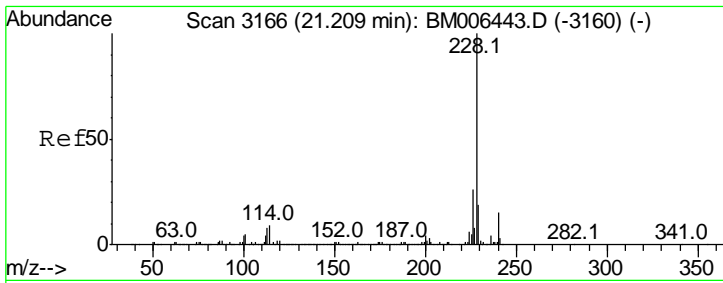
Tgt Ion	Resp	Lower	Upper
202	114641		
101	9.0	8.6	12.8
100	8.5	6.4	9.6



#77
 Pyrene
 Concen: 1.76 ng/ul
 RT: 19.44 min Scan# 2866
 Delta R.T. -0.01 min
 Lab File: BM006482.D
 Acq: 16 Jul 2016 16:59

Tgt Ion	Resp	Lower	Upper
202	106529		
101	11.4	10.0	15.0
100	9.9	7.9	11.9

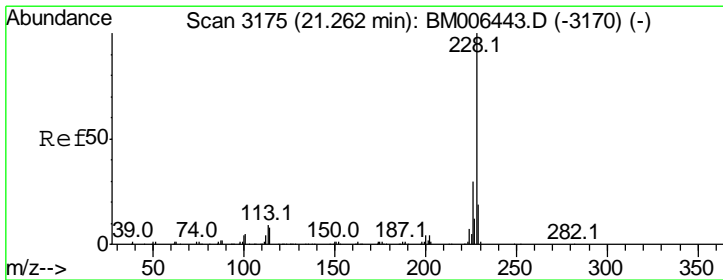
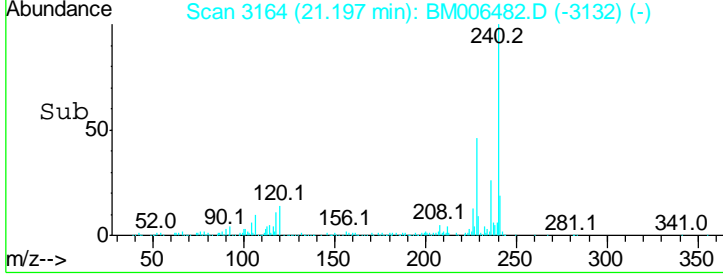
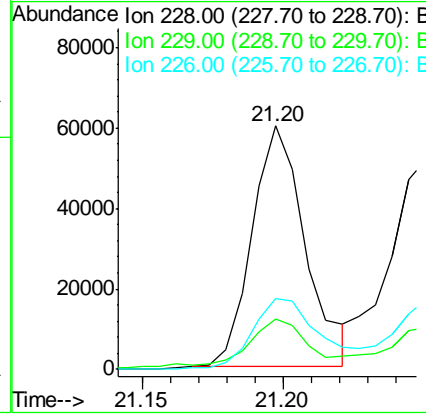
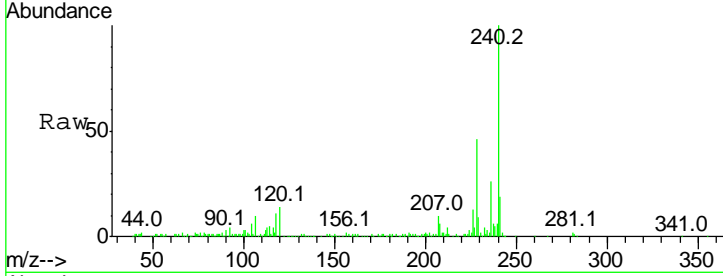




#80
 Benzo(a)anthracene
 Concen: 1.27 ng/ul
 RT: 21.20 min Scan# 3164
 Delta R.T. -0.01 min
 Lab File: BM006482.D
 Acq: 16 Jul 2016 16:59

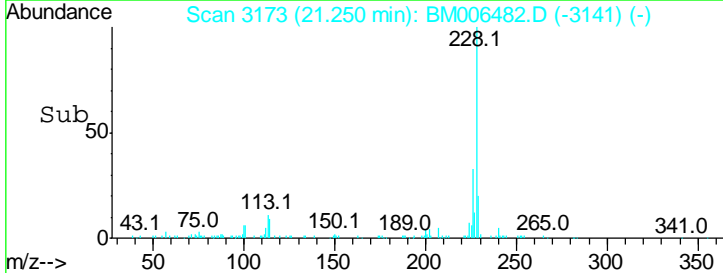
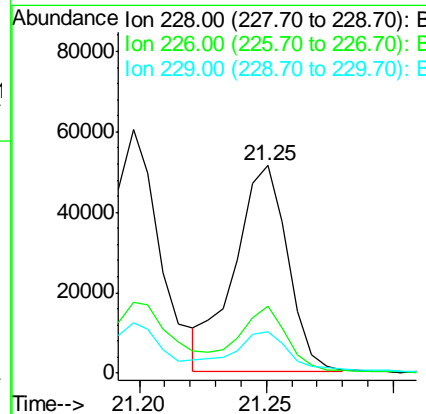
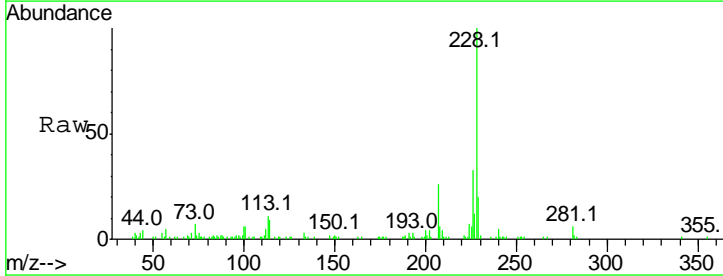
Instrument :
 BNA_M
 ClientSampled :

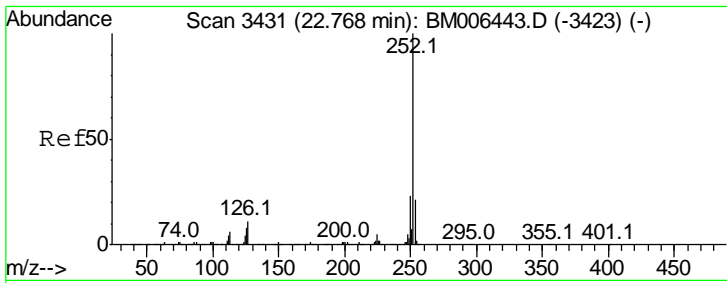
Tgt Ion	Resp	Lower	Upper
228	100		
229	20.6	15.6	23.4
226	29.3	21.4	32.2



#82
 Chrysene
 Concen: 1.28 ng/ul
 RT: 21.25 min Scan# 3173
 Delta R.T. -0.01 min
 Lab File: BM006482.D
 Acq: 16 Jul 2016 16:59

Tgt Ion	Resp	Lower	Upper
228	100		
226	32.5	23.3	34.9
229	20.1	15.8	23.8

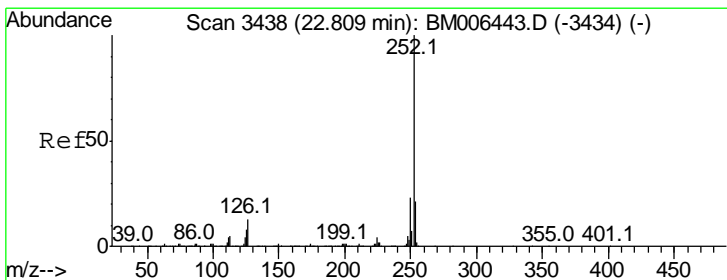
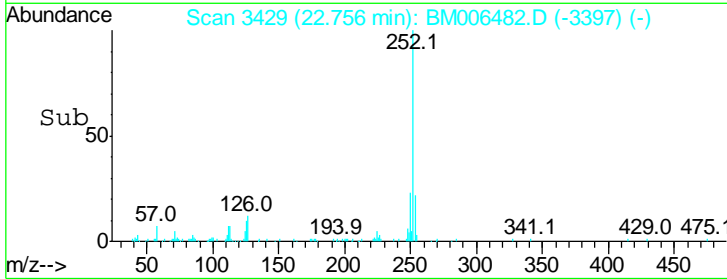
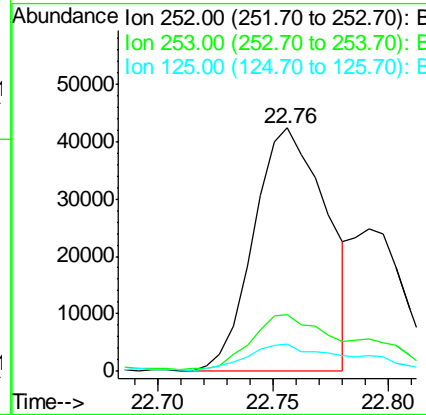
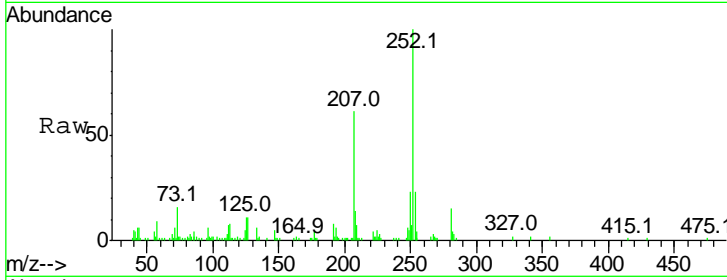




#85
 Benzo(b)fluoranthene
 Concen: 1.47 ng/ul
 RT: 22.76 min Scan# 3429
 Delta R.T. -0.01 min
 Lab File: BM006482.D
 Acq: 16 Jul 2016 16:59

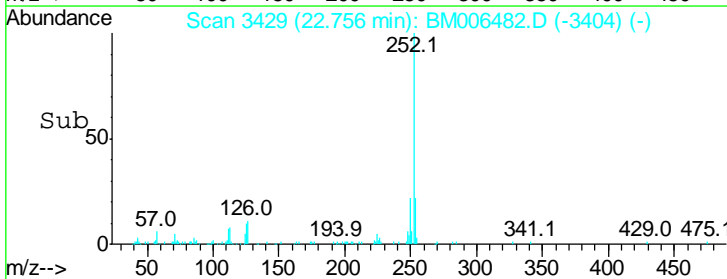
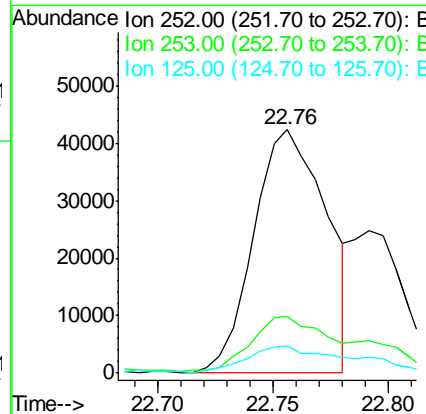
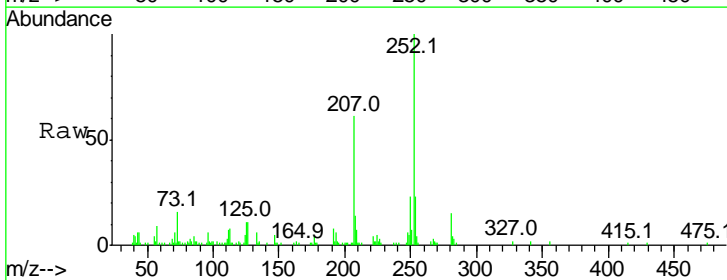
Instrument :
 BNA_M
 ClientSampled :

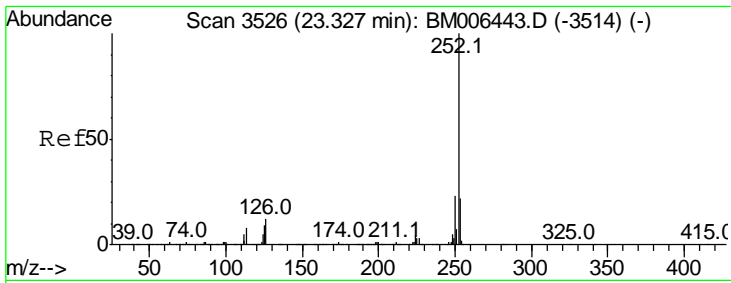
Tgt Ion	Resp	Lower	Upper
252	100		
253	23.1	17.4	26.2
125	11.1	6.7	10.1#



#86
 Benzo(k)fluoranthene
 Concen: 1.56 ng/ul
 RT: 22.76 min Scan# 3429
 Delta R.T. -0.05 min
 Lab File: BM006482.D
 Acq: 16 Jul 2016 16:59

Tgt Ion	Resp	Lower	Upper
252	100		
253	23.1	17.3	25.9
125	11.1	7.0	10.4#





#88
 Benzo(a)pyrene
 Concen: 1.26 ng/ul
 RT: 23.32 min Scan# 3524
 Delta R.T. -0.01 min
 Lab File: BM006482.D
 Acq: 16 Jul 2016 16:59

Instrument :
 BNA_M
 ClientSampled :

Total Ion	Ratio	Lower	Upper
252	100		
253	23.3	17.4	26.2
125	11.7	7.6	11.4

