

Data Path : Z:\HPCHEM1\BNA M\DATA\BM071717\
 Data File : BM010852.D
 Acq On : 18 Jul 2017 01:45
 Operator : SJ/JU
 Sample : I4203-08
 Misc :
 ALS Vial : 12 Sample Multiplier: 1

Instrument :
 BNA_M
 ClientSampleId :
 NB-SB04B

Quant Time: Jul 18 05:44:17 2017
 Quant Method : Z:\HPCHEM1\BNA M\METHODS\8270-BM071217.M
 Quant Title : ASP BNA STANDARDS FOR 5 POINT CALIBRATION
 QLast Update : Wed Jul 12 14:21:16 2017
 Response via : Initial Calibration

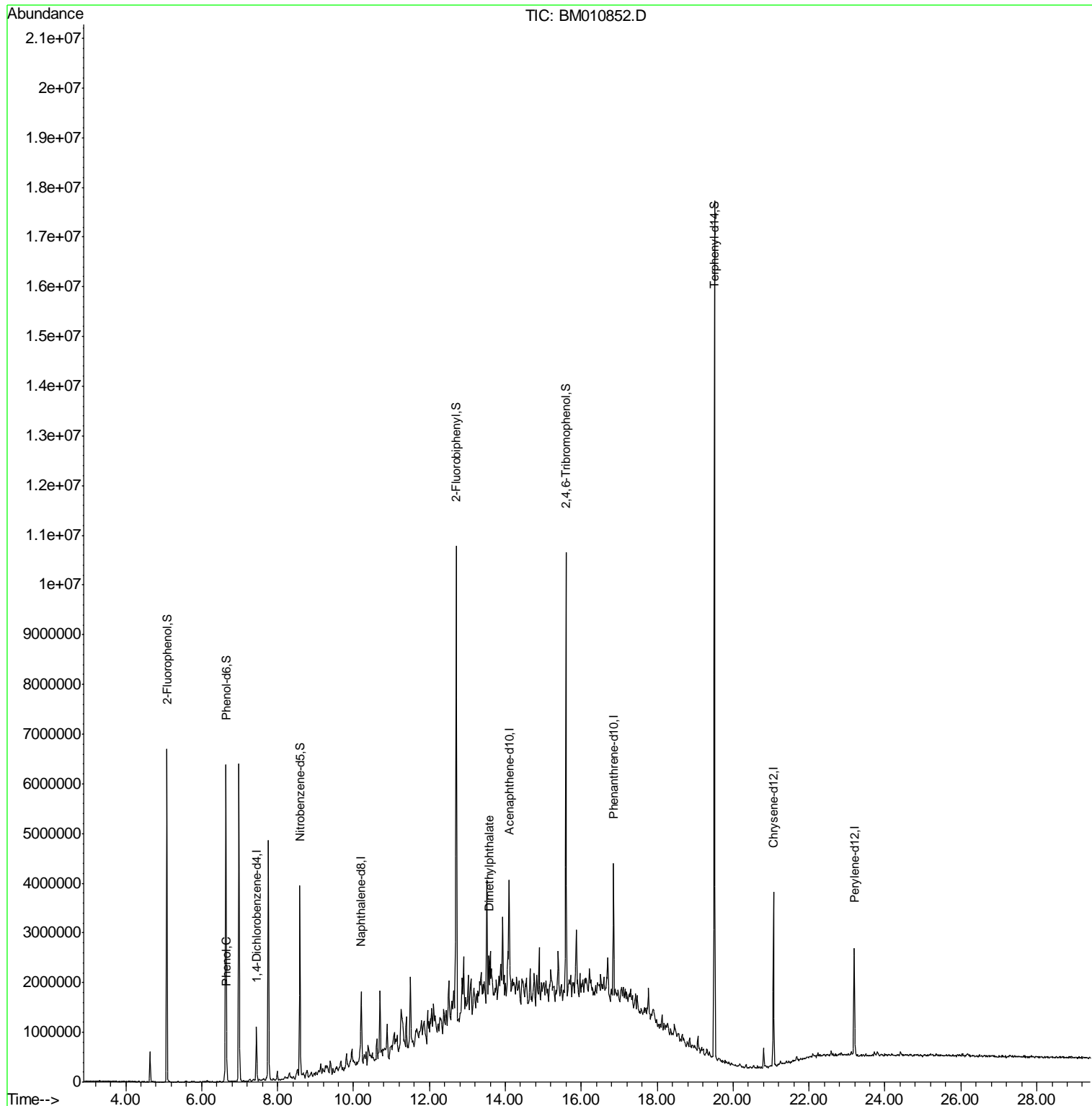
Internal Standards	R.T.	QIon	Response	Conc	Units	Dev(Min)
1) 1,4-Dichlorobenzene-d4	7.45	152	231060	20.00	ng	0.00
21) Naphthalene-d8	10.20	136	842522	20.00	ng	0.00
38) Acenaphthene-d10	14.09	164	573091	20.00	ng	0.00
63) Phenanthrene-d10	16.85	188	1430538	20.00	ng	0.00
75) Chrysene-d12	21.06	240	1665982	20.00	ng	0.00
86) Perylene-d12	23.19	264	1487766	20.00	ng	0.00
System Monitoring Compounds						
5) 2-Fluorophenol	5.08	112	2061774	147.81	ng	0.00
7) Phenol-d6	6.64	99	2822146	146.76	ng	0.00
23) Nitrobenzene-d5	8.59	82	2145472	97.88	ng	0.00
41) 2,4,6-Tribromophenol	15.60	330	1338140	152.79	ng	0.00
44) 2-Fluorobiphenyl	12.71	172	4230204	91.83	ng	0.00
78) Terphenyl-d14	19.51	244	6660564	77.33	ng	0.00
Target Compounds						
10) Phenol	6.66	94	111005	5.460	ng	96
49) Dimethylphthalate	13.56	163	380247	7.799	ng	# 98

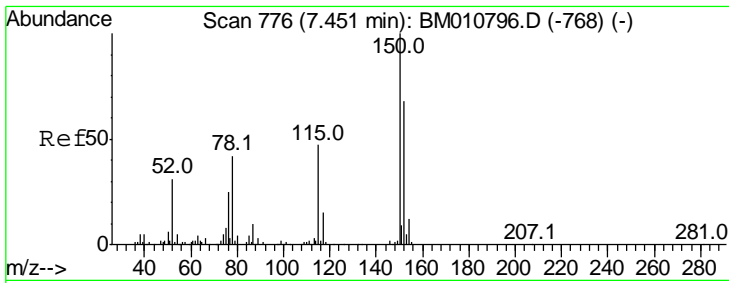
(#) = qualifier out of range (m) = manual integration (+) = signals summed

Data Path : Z:\HPCHEM1\BNA M\DATA\BM071717\
 Data File : BM010852.D
 Acq On : 18 Jul 2017 01:45
 Operator : SJ/JU
 Sample : I4203-08
 Misc :
 ALS Vial : 12 Sample Multiplier: 1

Instrument :
 BNA_M
 ClientSampleId :
 NB-SB04B

Quant Time: Jul 18 05:44:17 2017
 Quant Method : Z:\HPCHEM1\BNA M\METHODS\8270-BM071217.M
 Quant Title : ASP BNA STANDARDS FOR 5 POINT CALIBRATION
 QLast Update : Wed Jul 12 14:21:16 2017
 Response via : Initial Calibration

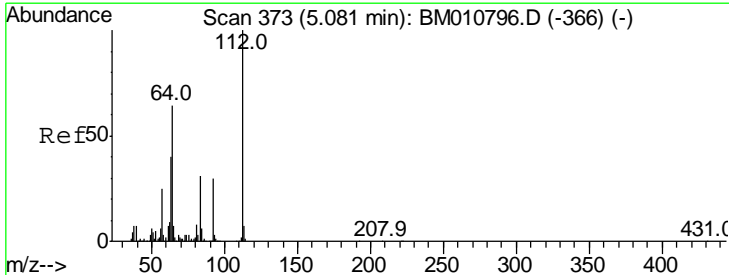
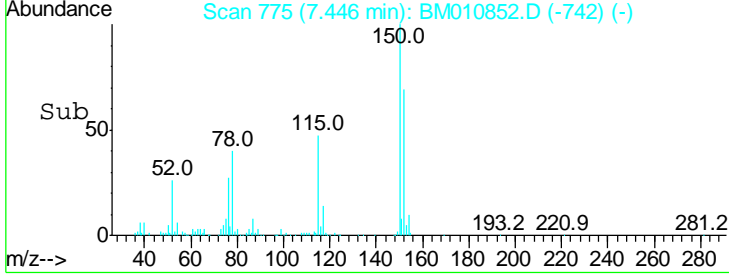
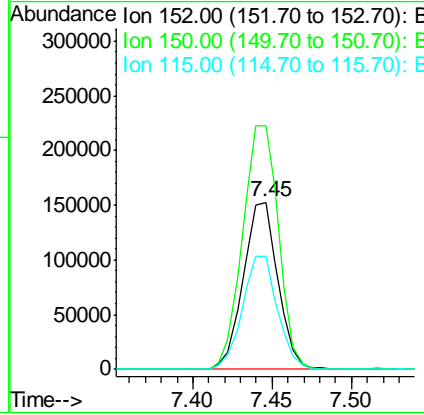
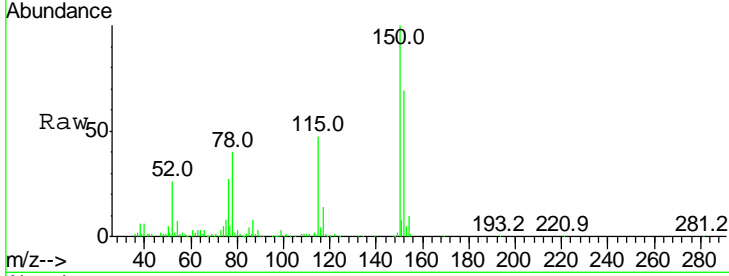




#1
 1,4-Dichlorobenzene-d4
 Concen: 20.000 ng
 RT: 7.45 min Scan# 775
 Delta R.T. -0.01 min
 Lab File: BM010852.D
 Acq: 18 Jul 2017 01:45

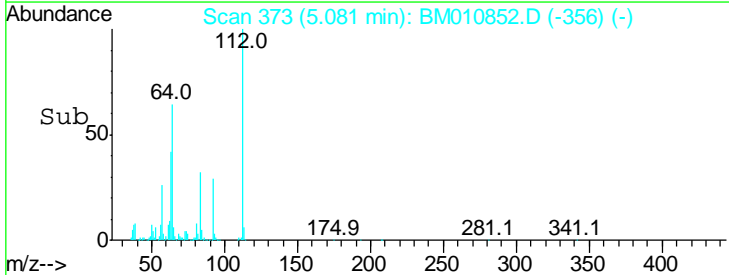
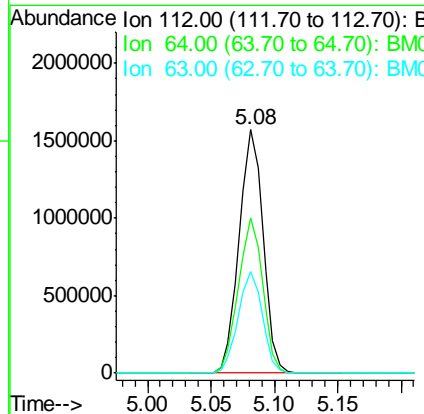
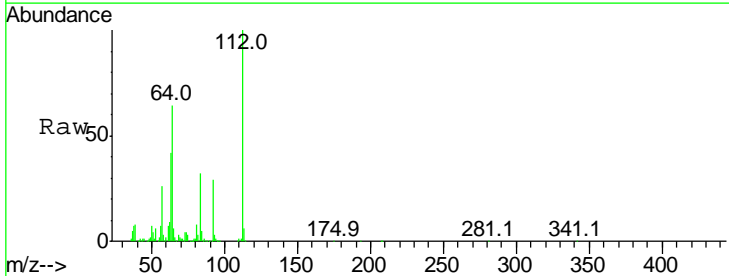
Instrument :
 BNA_M
ClientSampled :
 NB-SB04B

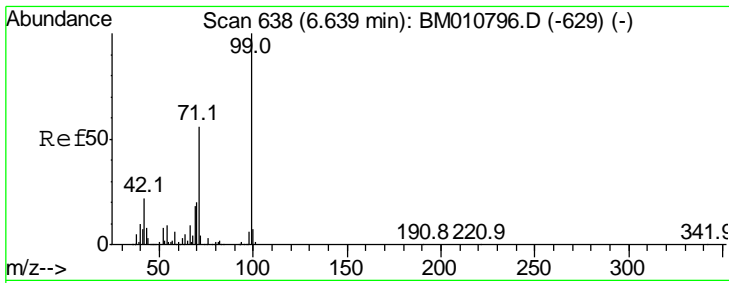
Tgt Ion	Resp	Lower	Upper
152	100		
150	145.8	119.5	179.3
115	68.0	43.0	64.4#



#5
 2-Fluorophenol
 Concen: 147.810 ng
 RT: 5.08 min Scan# 373
 Delta R.T. 0.00 min
 Lab File: BM010852.D
 Acq: 18 Jul 2017 01:45

Tgt Ion	Resp	Lower	Upper
112	100		
64	63.9	38.6	57.8#
63	41.7	19.3	28.9#

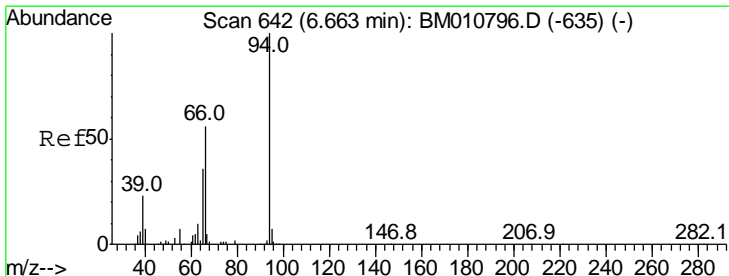
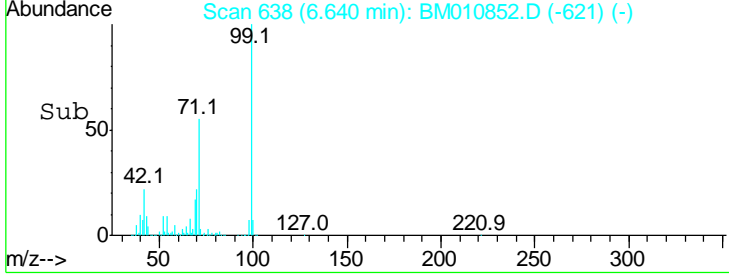
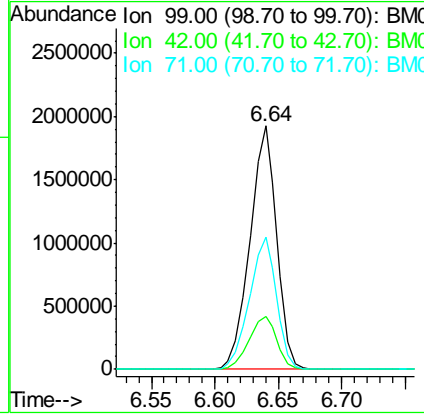
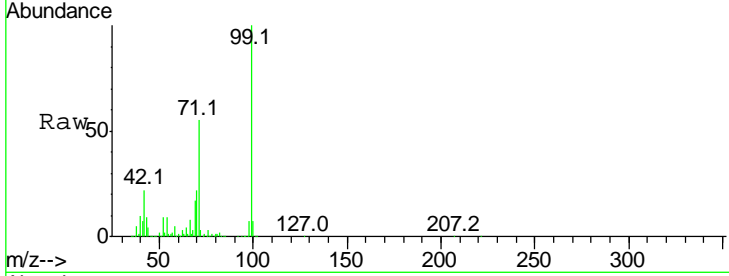




#7
 Phenol-d6
 Concen: 146.761 ng
 RT: 6.64 min Scan# 638
 Delta R.T. 0.00 min
 Lab File: BM010852.D
 Acq: 18 Jul 2017 01:45

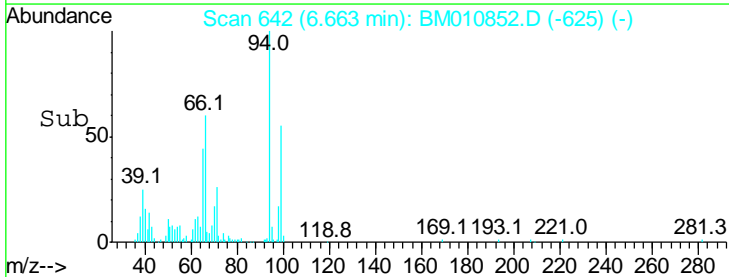
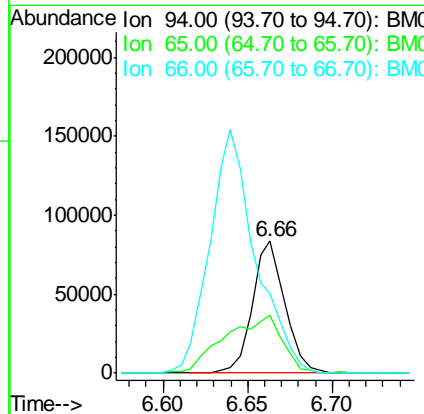
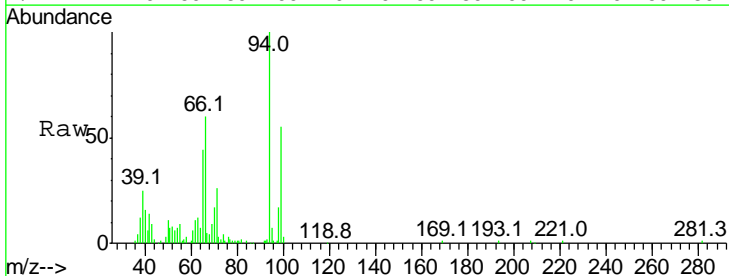
Instrument :
 BNA_M
 ClientSampled :
 NB-SB04B

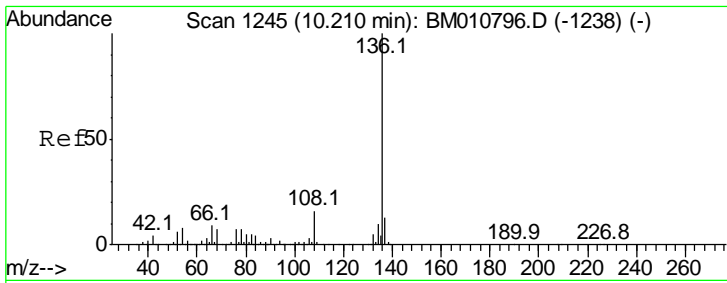
Tgt Ion	Resp	Lower	Upper
99	100		
42	21.5	11.0	16.4#
71	54.6	23.4	35.2#



#10
 Phenol
 Concen: 5.460 ng
 RT: 6.66 min Scan# 642
 Delta R.T. 0.00 min
 Lab File: BM010852.D
 Acq: 18 Jul 2017 01:45

Tgt Ion	Resp	Lower	Upper
94	100		
65	44.3	18.8	58.8
66	60.1	39.9	79.9



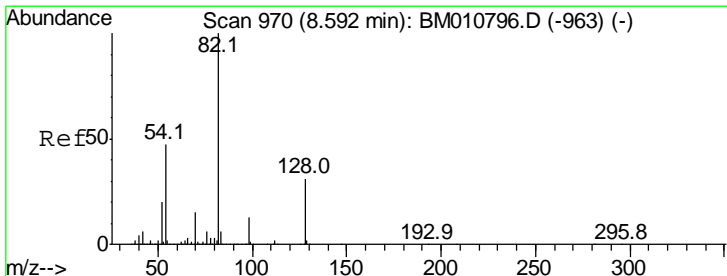
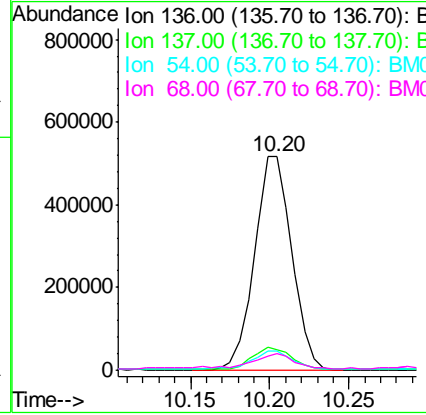
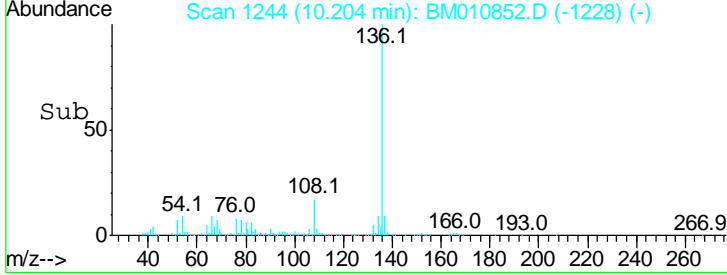
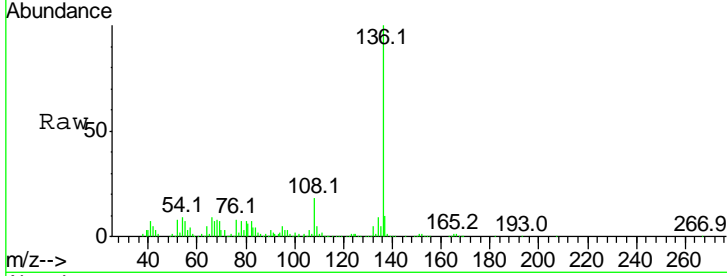


#21
 Naphthalene-d8
 Concen: 20.000 ng
 RT: 10.20 min Scan# 1244
 Delta R.T. -0.01 min
 Lab File: BM010852.D
 Acq: 18 Jul 2017 01:45

Instrument :
 BNA_M
ClientSampled :
 NB-SB04B

Tgt Ion: 136 Resp: 842522

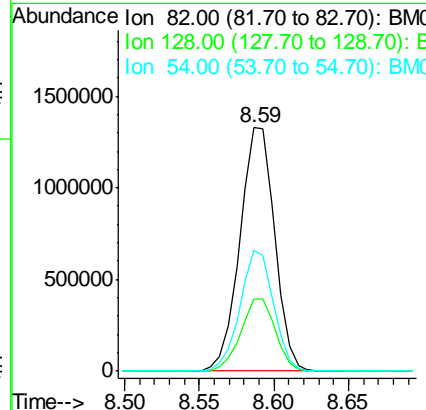
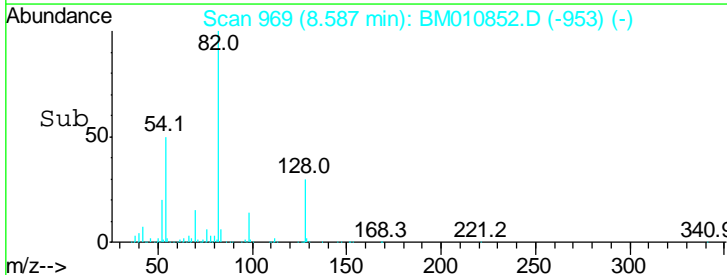
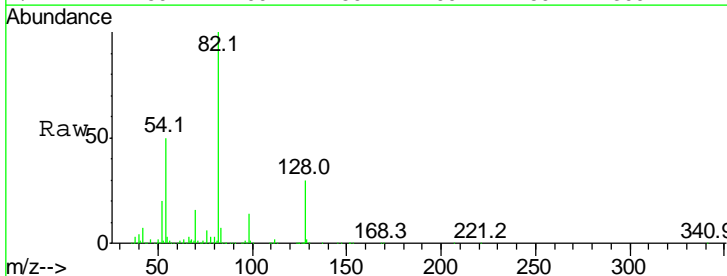
Ion	Ratio	Lower	Upper
136	100		
137	9.9	8.7	13.1
54	9.1	4.6	6.8#
68	8.0	3.7	5.5#

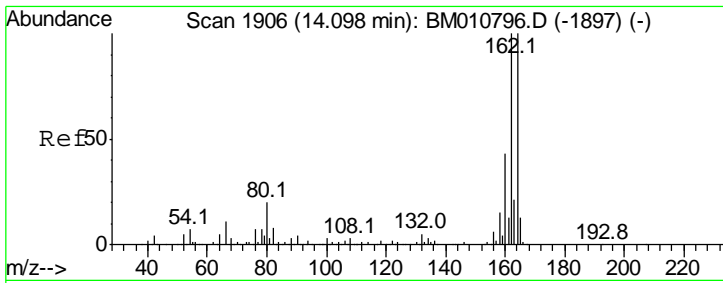


#23
 Nitrobenzene-d5
 Concen: 97.881 ng
 RT: 8.59 min Scan# 969
 Delta R.T. -0.01 min
 Lab File: BM010852.D
 Acq: 18 Jul 2017 01:45

Tgt Ion: 82 Resp: 2145472

Ion	Ratio	Lower	Upper
82	100		
128	29.7	32.8	49.2#
54	49.7	40.6	60.8



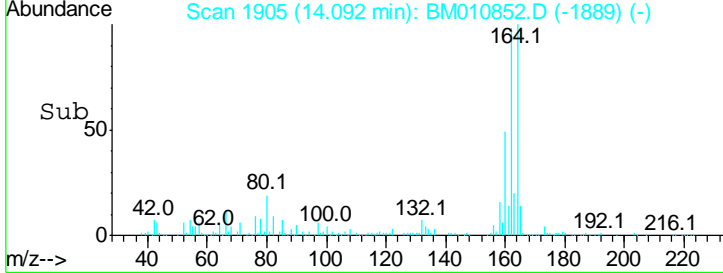
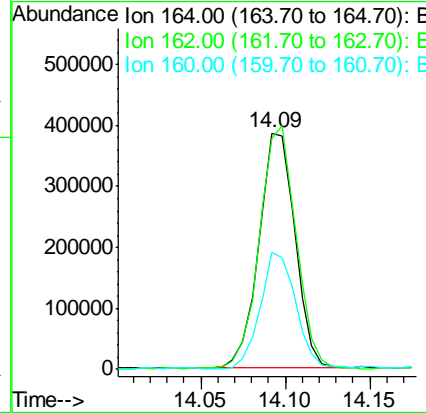
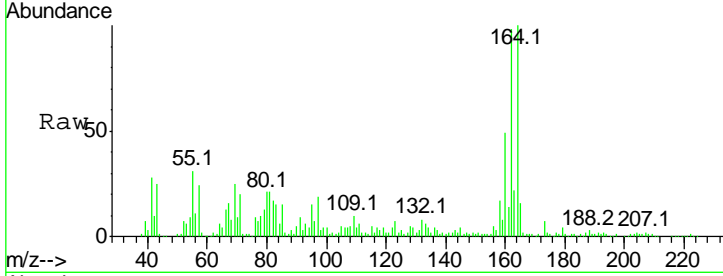


#38
 Acenaphthene-d10
 Concen: 20.000 ng
 RT: 14.09 min Scan# 1905
 Delta R.T. -0.01 min
 Lab File: BM010852.D
 Acq: 18 Jul 2017 01:45

Instrument :
 BNA_M
ClientSampled :
 NB-SB04B

Tgt Ion:164 Resp: 573091

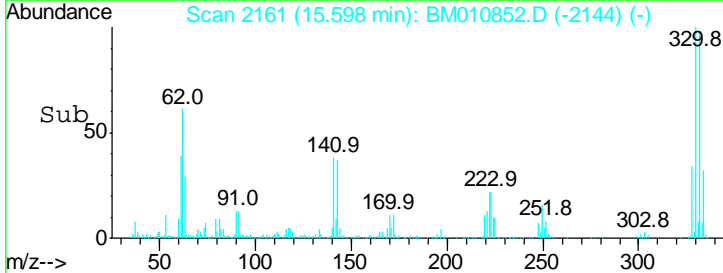
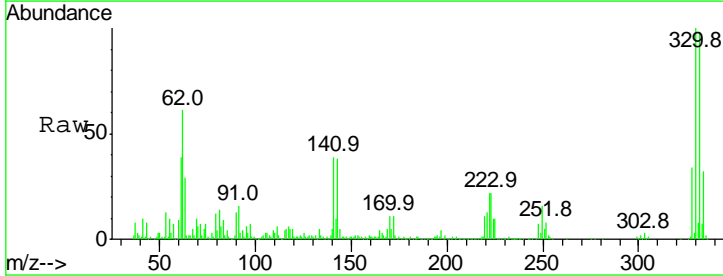
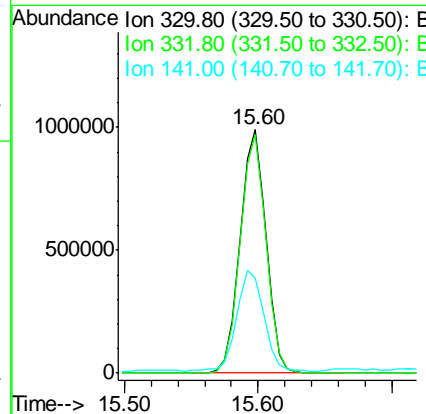
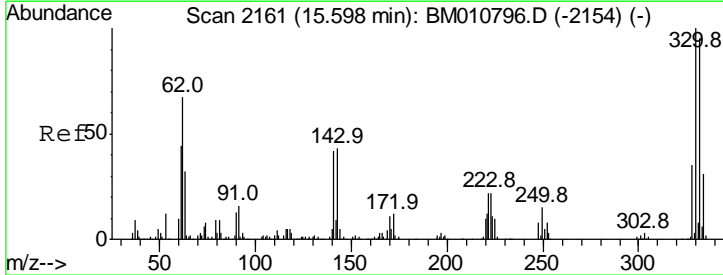
Ion	Ratio	Lower	Upper
164	100		
162	97.6	82.4	123.6
160	49.4	35.8	53.6

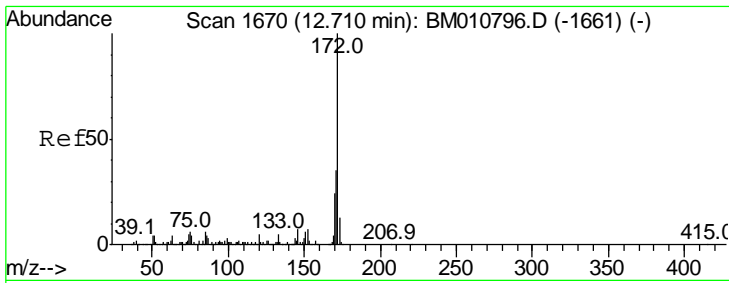


#41
 2,4,6-Tribromophenol
 Concen: 152.792 ng
 RT: 15.60 min Scan# 2161
 Delta R.T. 0.00 min
 Lab File: BM010852.D
 Acq: 18 Jul 2017 01:45

Tgt Ion:330 Resp: 1338140

Ion	Ratio	Lower	Upper
330	100		
332	97.3	0.0	0.0#
141	43.0	0.0	0.0#



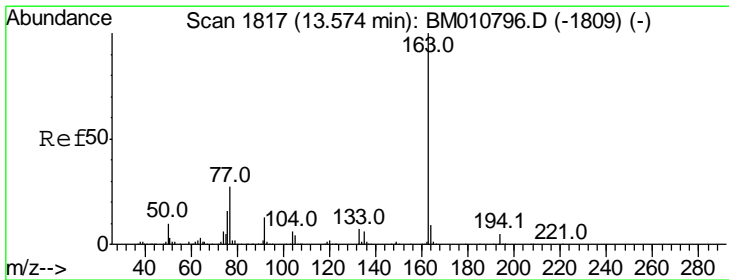
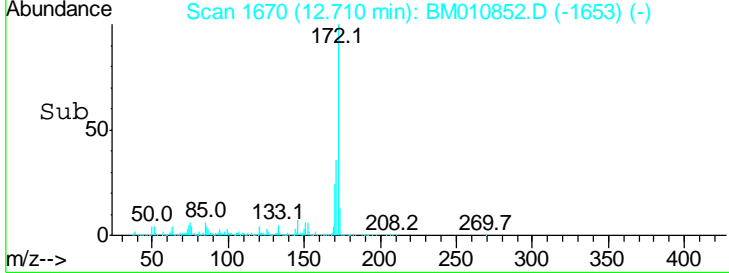
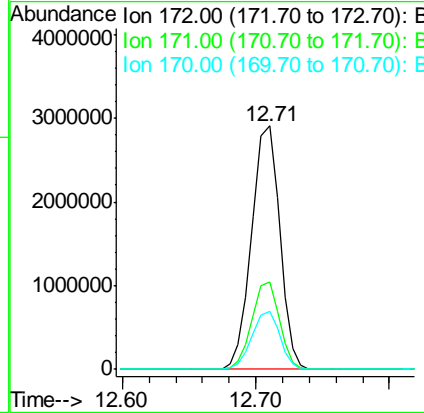
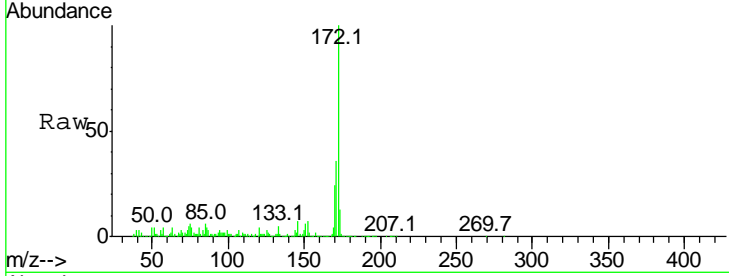


#44
 2-Fluorobiphenyl
 Concen: 91.826 ng
 RT: 12.71 min Scan# 1670
 Delta R.T. 0.00 min
 Lab File: BM010852.D
 Acq: 18 Jul 2017 01:45

Instrument :
 BNA_M
 ClientSampled :
 NB-SB04B

Tgt Ion:172 Resp: 4230204

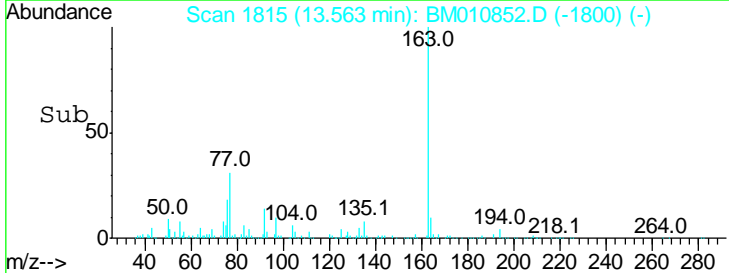
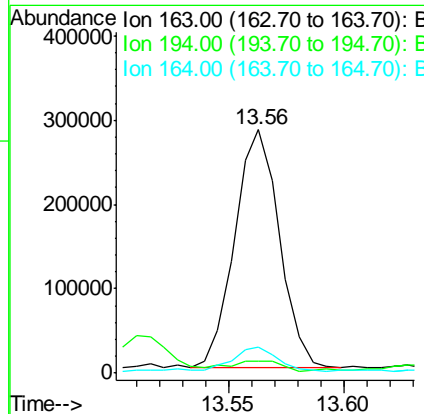
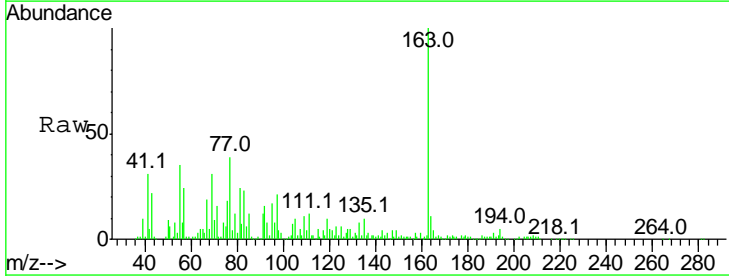
Ion	Ratio	Lower	Upper
172	100		
171	36.1	28.5	42.7
170	23.7	18.8	28.2

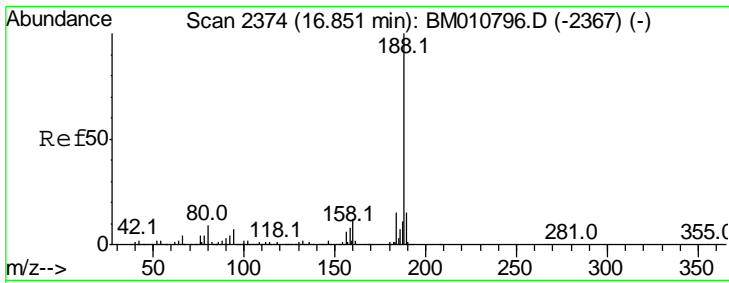


#49
 Dimethylphthalate
 Concen: 7.799 ng
 RT: 13.56 min Scan# 1815
 Delta R.T. -0.01 min
 Lab File: BM010852.D
 Acq: 18 Jul 2017 01:45

Tgt Ion:163 Resp: 380247

Ion	Ratio	Lower	Upper
163	100		
194	4.7	2.7	4.1#
164	10.7	8.2	12.2

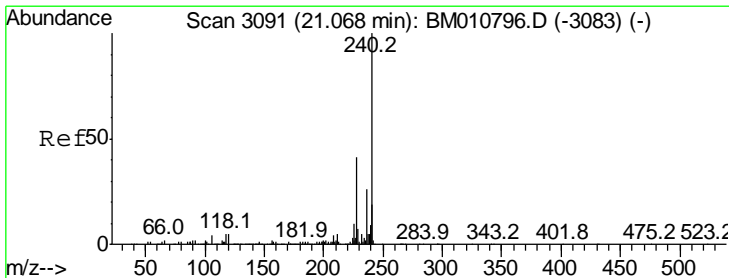
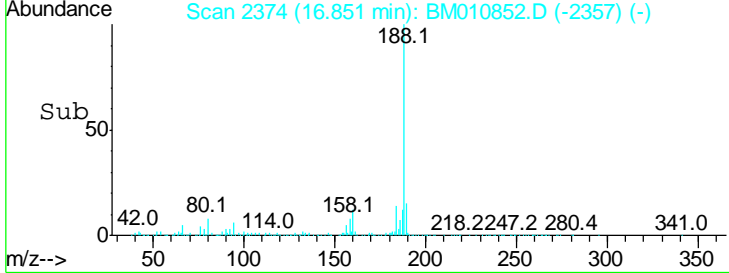
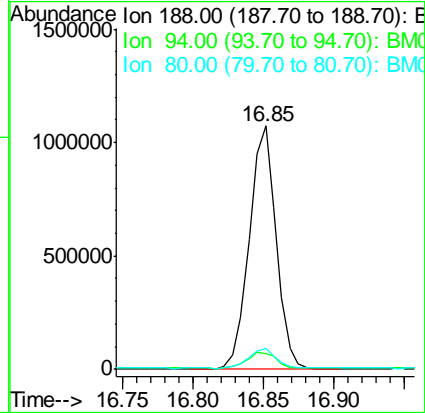
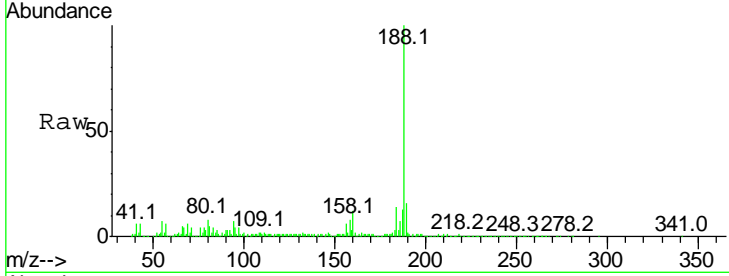




#63
 Phenanthrene-d10
 Concen: 20.000 ng
 RT: 16.85 min Scan# 2374
 Delta R.T. 0.00 min
 Lab File: BM010852.D
 Acq: 18 Jul 2017 01:45

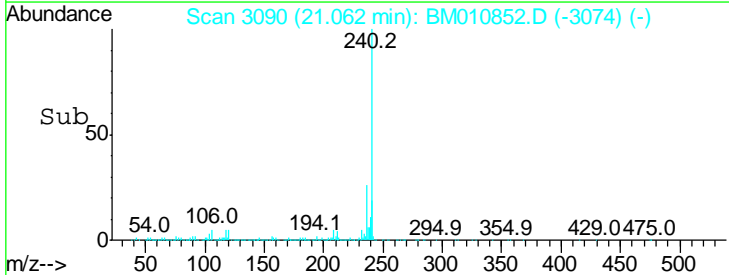
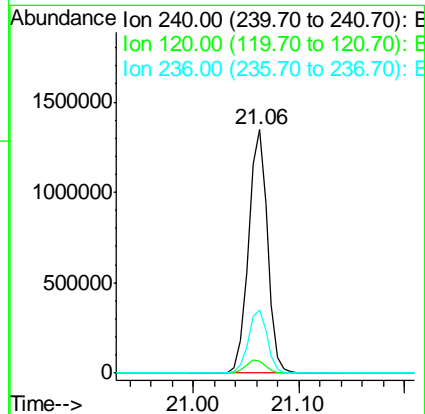
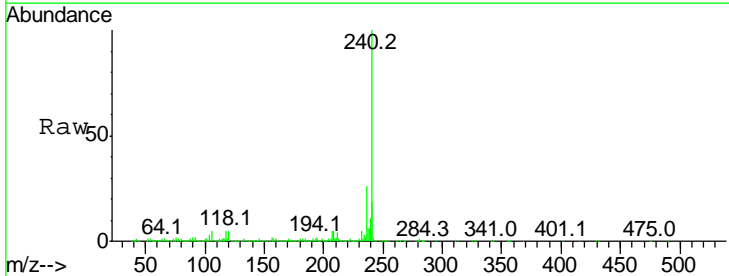
Instrument :
 BNA_M
 ClientSampled :
 NB-SB04B

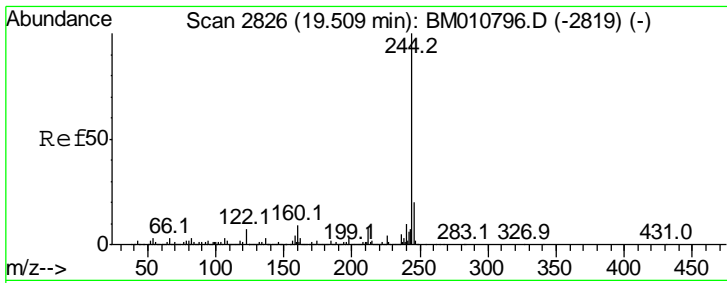
Tgt Ion	Ratio	Lower	Upper
188	100		
94	6.5	8.7	13.1#
80	8.4	9.3	13.9#



#75
 Chrysene-d12
 Concen: 20.000 ng
 RT: 21.06 min Scan# 3090
 Delta R.T. -0.01 min
 Lab File: BM010852.D
 Acq: 18 Jul 2017 01:45

Tgt Ion	Ratio	Lower	Upper
240	100		
120	4.9	8.2	12.2#
236	26.2	20.0	30.0

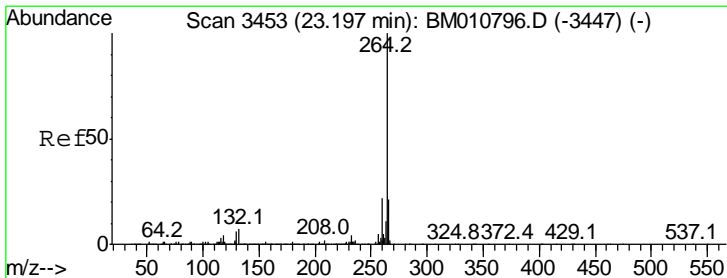
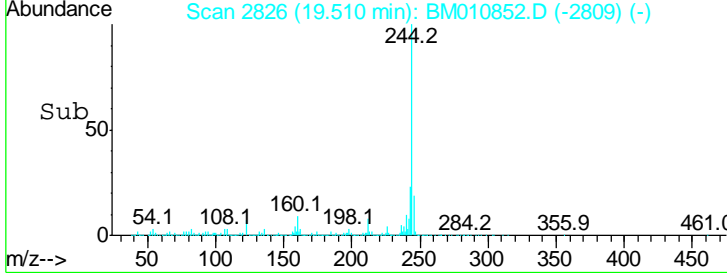
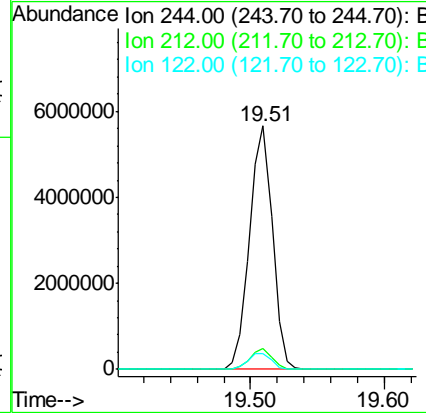
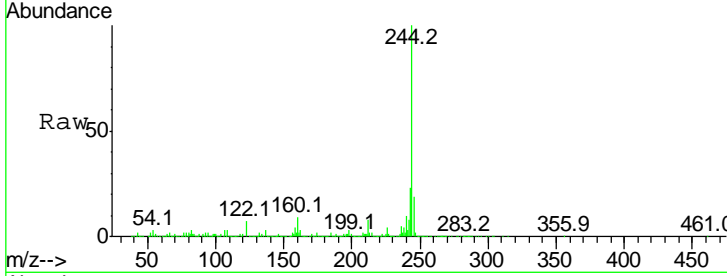




#78
 Terphenyl-d14
 Concen: 77.325 ng
 RT: 19.51 min Scan# 2826
 Delta R.T. 0.00 min
 Lab File: BM010852.D
 Acq: 18 Jul 2017 01:45

Instrument :
 BNA_M
 ClientSampled :
 NB-SB04B

Tgt Ion	Resp	Lower	Upper
244	100		
212	8.4	4.9	7.3#
122	6.6	6.2	9.4



#86
 Perylene-d12
 Concen: 20.000 ng
 RT: 23.19 min Scan# 3452
 Delta R.T. -0.01 min
 Lab File: BM010852.D
 Acq: 18 Jul 2017 01:45

Tgt Ion	Resp	Lower	Upper
264	100		
260	25.9	18.6	27.8
265	22.5	17.3	25.9

