

Data Path : S:\HPCHEM1\BNA\_M\DATA\BM072015\  
 Data File : BM001983.D  
 Acq On : 20 Jul 2015 20:42  
 Operator : TP/UM  
 Sample : G3000-05  
 Misc :  
 ALS Vial : 16 Sample Multiplier: 1

Instrument :  
 BNA\_M  
 ClientSampleId :  
 C02B1

## Integration Parameters: LSCINT.P

Integrator: RTE  
 Smoothing : OFF  
 Sampling : 1  
 Start Thrs: 0.2  
 Stop Thrs : 0

Filtering: 5  
 Min Area: 0.1 % of largest Peak  
 Max Peaks: 100  
 Peak Location: TOP

If leading or trailing edge < 100 prefer < Baseline drop else tangent >  
 Peak separation: 5

Method : S:\HPCHEM1\BNA\_M\METHODS\SOM02.2-EPA-BM071315.M  
 Title : SVOA CALIBRATION

Signal : TIC

peak #	R.T. min	first scan	max scan	last scan	PK TY	peak height	corr. area	corr. % max.	% of total
1	2.722	4	6	12	rVB2	1451	1827	0.12%	0.012%
2	2.793	15	18	22	rVV2	4275	6413	0.43%	0.043%
3	2.834	22	25	28	rVV2	13220	16561	1.12%	0.112%
4	2.875	28	32	38	rVV	86674	123657	8.38%	0.835%
5	2.922	38	40	48	rVB2	8028	9849	0.67%	0.066%
6	3.134	71	76	80	rBV	7162	8327	0.56%	0.056%
7	3.404	118	122	129	rBV3	3045	5800	0.39%	0.039%
8	3.651	161	164	167	rBV	5026	5927	0.40%	0.040%
9	4.298	270	274	275	rBV2	1604	1848	0.13%	0.012%
10	4.781	350	356	360	rBV2	4586	7866	0.53%	0.053%
11	6.657	671	675	680	rBB2	2003	3399	0.23%	0.023%
12	6.822	695	703	713	rBB	162234	267592	18.14%	1.806%
13	6.951	721	725	727	rBV	6119	8203	0.56%	0.055%
14	6.992	727	732	739	rVB	123814	186131	12.61%	1.257%
15	7.186	758	765	772	rBB	164025	254491	17.25%	1.718%
16	7.651	838	844	852	rBB	341585	554357	37.57%	3.742%
17	8.363	959	965	974	rBB	201826	312012	21.15%	2.106%
18	8.475	979	984	990	rBB	38696	58430	3.96%	0.394%
19	8.816	1035	1042	1049	rBB	142014	225322	15.27%	1.521%
20	8.933	1057	1062	1069	rBB2	8200	13356	0.91%	0.090%
21	9.533	1158	1164	1172	rBB	98907	155262	10.52%	1.048%
22	9.686	1186	1190	1197	rVB	7426	12458	0.84%	0.084%
23	9.892	1221	1225	1229	rBB	3753	5674	0.38%	0.038%
24	10.063	1248	1254	1264	rVB	220733	357403	24.22%	2.413%
25	10.445	1311	1319	1326	rBV	498803	817051	55.37%	5.516%
26	10.492	1326	1327	1332	rVB	2950	2832	0.19%	0.019%
27	10.586	1336	1343	1353	rBV	168027	266318	18.05%	1.798%
28	12.116	1598	1603	1607	rBB	2303	3089	0.21%	0.021%
29	12.645	1689	1693	1698	rBV2	2968	4464	0.30%	0.030%
30	12.904	1733	1737	1742	rBV	7157	8568	0.58%	0.058%
31	13.721	1870	1876	1880	rBV	376976	517207	35.05%	3.492%
32	13.768	1880	1884	1891	rVB	330445	436768	29.60%	2.949%
33	14.004	1914	1924	1934	rVB	391168	580774	39.36%	3.921%
34	14.204	1955	1958	1962	rVB	5283	6754	0.46%	0.046%

Data Path : S:\HPCHEM1\BNA\_M\DATA\BM072015\  
 Data File : BM001983.D  
 Acq On : 20 Jul 2015 20:42  
 Operator : TP/UM  
 Sample : G3000-05  
 Misc :  
 ALS Vial : 16 Sample Multiplier: 1

Instrument :  
 BNA\_M  
 ClientSampleId :  
 C02B1

## Integration Parameters: LSCINT.P

Integrator: RTE  
 Smoothing : OFF  
 Sampling : 1  
 Start Thrs: 0.2  
 Stop Thrs : 0

Filtering: 5  
 Min Area: 0.1 % of largest Peak  
 Max Peaks: 100  
 Peak Location: TOP

If leading or trailing edge < 100 prefer < Baseline drop else tangent >  
 Peak separation: 5

Method : S:\HPCHEM1\BNA\_M\METHODS\SOM02.2-EPA-BM071315.M  
 Title : SVOA CALIBRATION

35	14.310	1970	1976	1984	rBV2	727005	1123494	76.14%	7.585%
36	14.374	1984	1987	1991	rVB2	4768	5961	0.40%	0.040%
37	14.515	2006	2011	2023	rBV	143609	214425	14.53%	1.448%
38	14.668	2035	2037	2040	rVB2	1733	1894	0.13%	0.013%
39	14.710	2040	2044	2051	rVB4	5741	8991	0.61%	0.061%
40	14.821	2060	2063	2067	rBV3	2295	2486	0.17%	0.017%
41	14.974	2086	2089	2094	rVB2	1620	1802	0.12%	0.012%
42	15.109	2105	2112	2116	rBV	12158	15793	1.07%	0.107%
43	15.162	2116	2121	2126	rVB	14068	18855	1.28%	0.127%
44	15.304	2139	2145	2152	rBV	493720	722659	48.98%	4.879%
45	15.362	2152	2155	2160	rVB2	8748	11266	0.76%	0.076%
46	15.433	2163	2167	2173	rVB2	18599	22393	1.52%	0.151%
47	15.480	2173	2175	2178	rBV	1410	1559	0.11%	0.011%
48	15.562	2183	2189	2194	rVB3	5208	11225	0.76%	0.076%
49	15.604	2194	2196	2200	rVB2	1625	2372	0.16%	0.016%
50	15.656	2200	2205	2210	rBV3	4651	7126	0.48%	0.048%
51	15.715	2210	2215	2222	rVB3	2465	4886	0.33%	0.033%
52	15.798	2226	2229	2236	rVB3	2492	4387	0.30%	0.030%
53	15.868	2236	2241	2243	rBV3	2273	2839	0.19%	0.019%
54	15.974	2254	2259	2261	rBV2	1528	1950	0.13%	0.013%
55	16.021	2261	2267	2275	rVV2	21684	43090	2.92%	0.291%
56	16.080	2275	2277	2283	rVB4	2123	3282	0.22%	0.022%
57	16.198	2294	2297	2303	rBV4	2831	5251	0.36%	0.035%
58	16.362	2321	2325	2332	rBV4	5780	10951	0.74%	0.074%
59	16.421	2332	2335	2339	rVB2	3129	4218	0.29%	0.028%
60	16.456	2339	2341	2344	rBV3	1523	1546	0.10%	0.010%
61	16.480	2344	2345	2349	rBV3	1685	1754	0.12%	0.012%
62	16.527	2349	2353	2357	rVB6	3522	5058	0.34%	0.034%
63	16.598	2357	2365	2368	rBV7	6128	10854	0.74%	0.073%
64	16.639	2368	2372	2374	rVB4	3283	4943	0.33%	0.033%
65	16.715	2382	2385	2386	rBV3	1890	2216	0.15%	0.015%
66	16.815	2394	2402	2405	rBV2	25972	38720	2.62%	0.261%
67	16.945	2422	2424	2425	rBV3	1801	1821	0.12%	0.012%
68	17.062	2437	2444	2448	rBV	941047	1335632	90.52%	9.017%
69	17.103	2448	2451	2455	rVV	91988	117227	7.94%	0.791%
70	17.156	2455	2460	2465	rVV	576685	826631	56.02%	5.580%
71	17.192	2465	2466	2471	rVB	54114	45071	3.05%	0.304%

Data Path : S:\HPCHEM1\BNA\_M\DATA\BM072015\  
 Data File : BM001983.D  
 Acq On : 20 Jul 2015 20:42  
 Operator : TP/UM  
 Sample : G3000-05  
 Misc :  
 ALS Vial : 16 Sample Multiplier: 1

Instrument :  
 BNA\_M  
 ClientSampleId :  
 C02B1

## Integration Parameters: LSCINT.P

Integrator: RTE  
 Smoothing : OFF Filtering: 5  
 Sampling : 1 Min Area: 0.1 % of largest Peak  
 Start Thrs: 0.2 Max Peaks: 100  
 Stop Thrs : 0 Peak Location: TOP

If leading or trailing edge < 100 prefer < Baseline drop else tangent >  
 Peak separation: 5

Method : S:\HPCHEM1\BNA\_M\METHODS\SOM02.2-EPA-BM071315.M  
 Title : SVOA CALIBRATION

72	17.245	2471	2475	2476	rBV3	7256	6979	0.47%	0.047%
73	17.351	2490	2493	2499	rBV8	3230	6195	0.42%	0.042%
74	17.415	2501	2504	2505	rBV2	5879	5547	0.38%	0.037%
75	17.451	2505	2510	2511	rBV4	14975	19033	1.29%	0.128%
76	17.551	2523	2527	2531	rBV2	25979	32729	2.22%	0.221%
77	17.639	2540	2542	2543	rBV2	3952	3925	0.27%	0.026%
78	17.950	2589	2595	2598	rBV2	82811	125387	8.50%	0.846%
79	18.062	2611	2614	2619	rVB	18052	25996	1.76%	0.175%
80	18.133	2621	2626	2630	rBV2	42651	70740	4.79%	0.478%
81	18.245	2642	2645	2649	rBV4	21209	24303	1.65%	0.164%
82	18.380	2665	2668	2675	rVB6	35298	45189	3.06%	0.305%
83	18.439	2675	2678	2682	rBV	16594	21825	1.48%	0.147%
84	18.533	2692	2694	2699	rBV4	11099	11381	0.77%	0.077%
85	19.121	2790	2794	2799	rBV	303312	424183	28.75%	2.864%
86	19.180	2801	2804	2809	rVV2	30919	39968	2.71%	0.270%
87	19.239	2812	2814	2817	rVV4	26149	24586	1.67%	0.166%
88	19.462	2847	2852	2855	rBV	691872	997781	67.62%	6.736%
89	21.256	3152	3157	3161	rBV	1072313	1475534	100.00%	9.961%
90	23.344	3508	3512	3517	rBV2	298583	471890	31.98%	3.186%
91	23.485	3531	3536	3545	rVB	594797	1089145	73.81%	7.353%

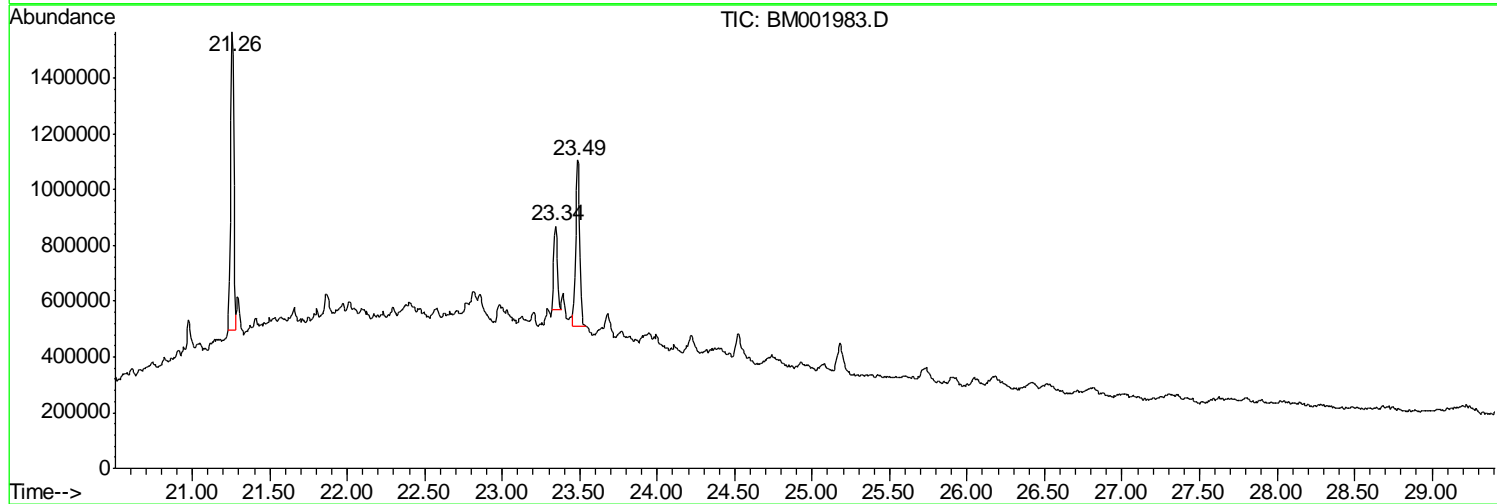
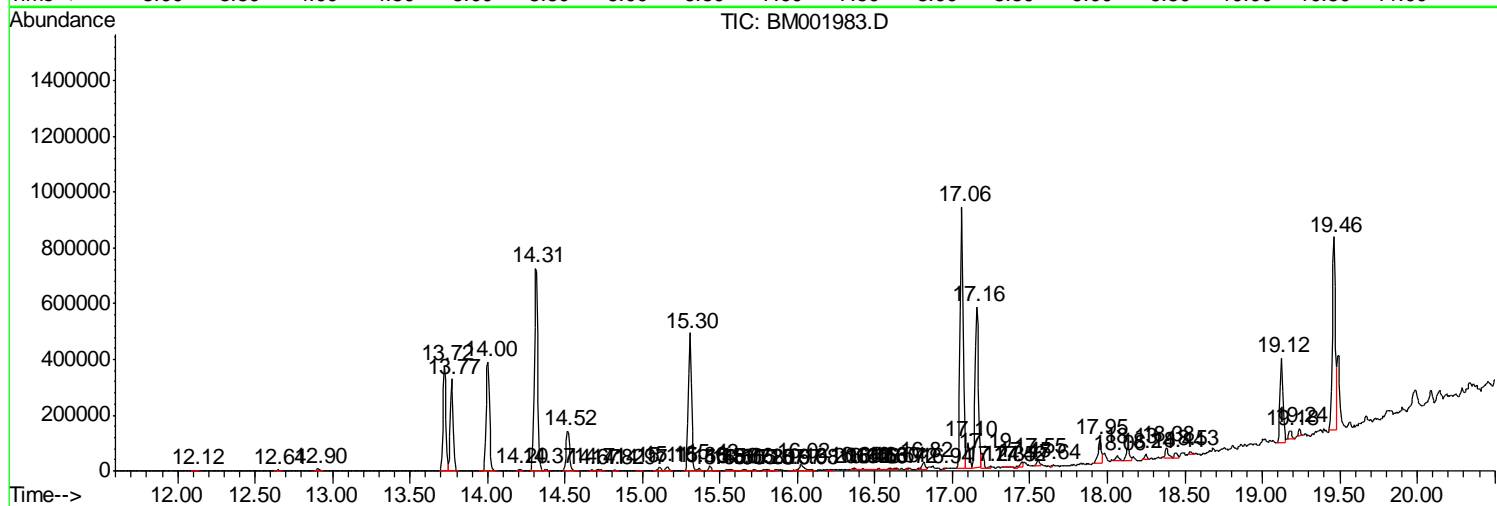
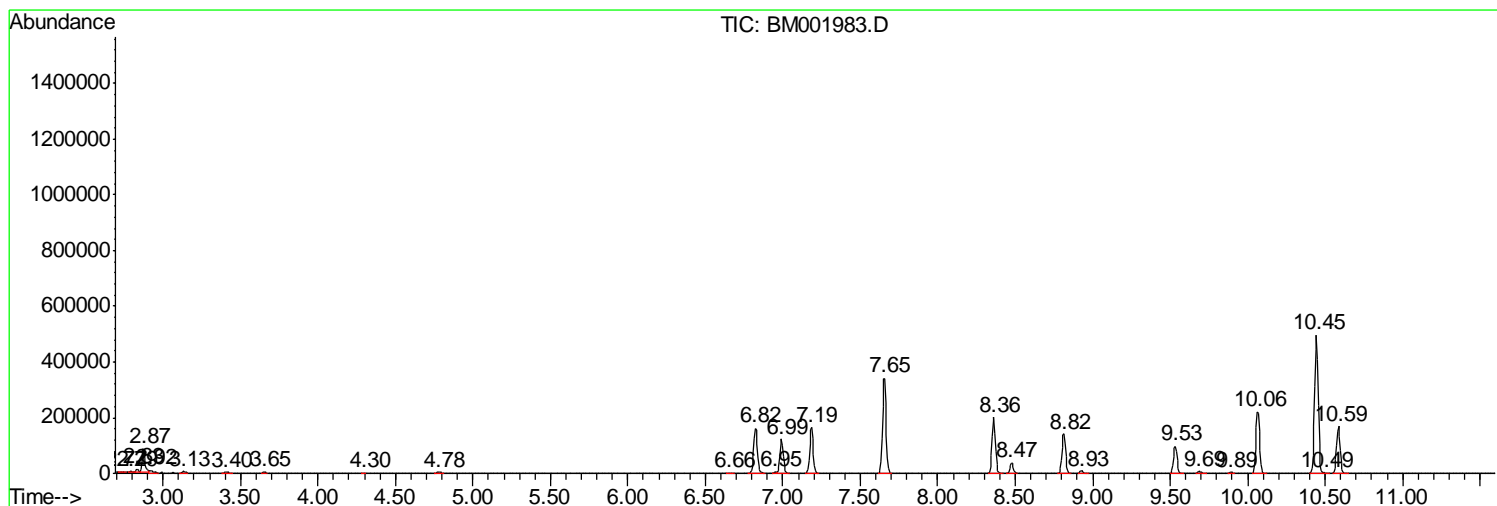
Sum of corrected areas: 14812934

Data Path : S:\HPCHEM1\BNA\_M\DATA\BM072015\  
 Data File : BM001983.D  
 Acq On : 20 Jul 2015 20:42  
 Operator : TP/UM  
 Sample : G3000-05  
 Misc :  
 ALS Vial : 16 Sample Multiplier: 1

Instrument :  
 BNA\_M  
 ClientSampleId :  
 C02B1

Quant Method : Z:\HPCHEM1\BNA\_M\METHODS\SOM02.2-EPA-BM071315.M  
 Quant Title : SVOA CALIBRATION

TIC Library : C:\DATABASE\NIST02.L  
 TIC Integration Parameters: LSCINT.P



Data Path : S:\HPCHEM1\BNA\_M\DATA\BM072015\  
 Data File : BM001983.D  
 Acq On : 20 Jul 2015 20:42  
 Operator : TP/UM  
 Sample : G3000-05  
 Misc :  
 ALS Vial : 16 Sample Multiplier: 1

Instrument :  
 BNA\_M  
 ClientSampled :  
 C02B1

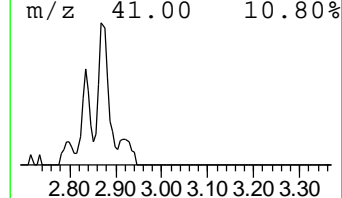
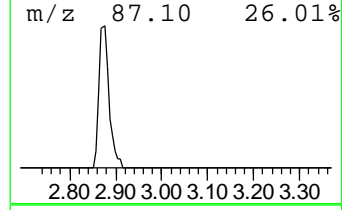
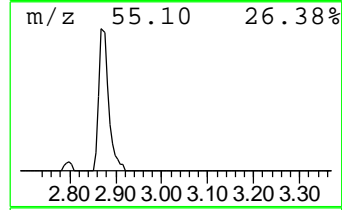
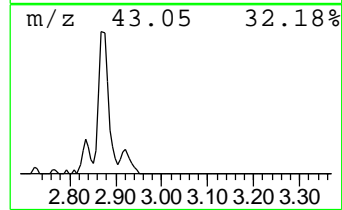
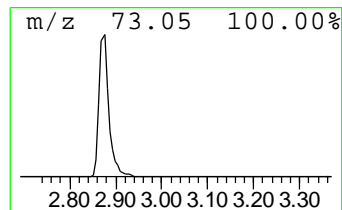
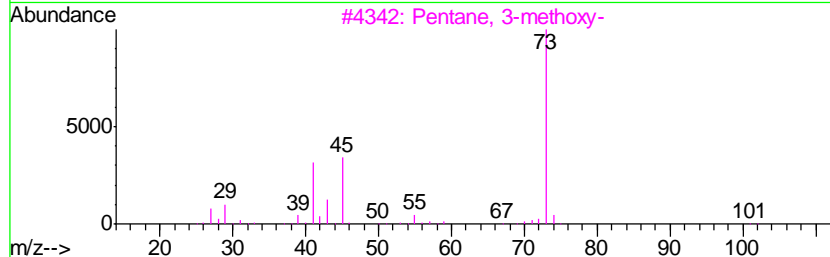
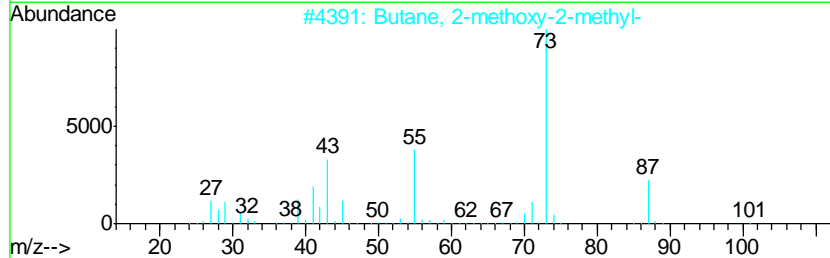
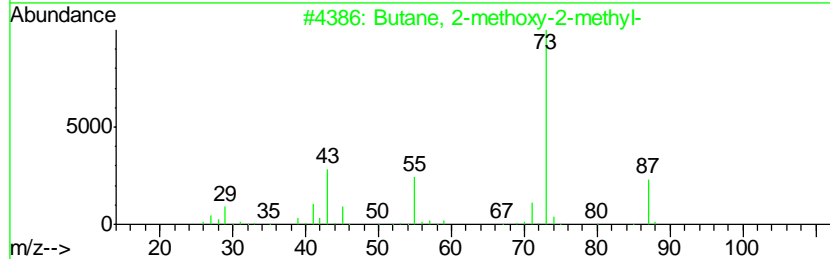
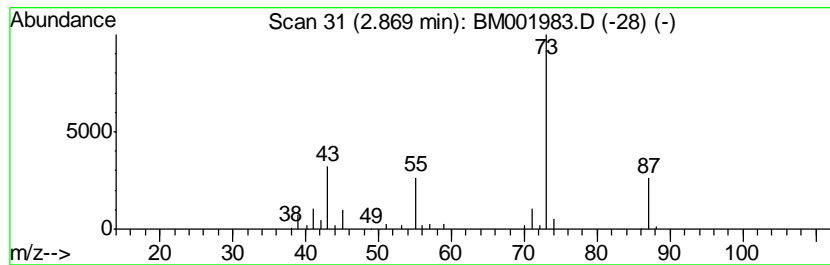
Quant Method : Z:\HPCHEM1\BNA\_M\METHODS\SOM02.2-EPA-BM071315.M  
 Quant Title : SVOA CALIBRATION

TIC Library : C:\DATABASE\NIST02.L  
 TIC Integration Parameters: LSCINT.P

\*\*\*\*\*  
 Peak Number 1 Butane, 2-methoxy-2-methyl- Concentration Rank 1

R.T.	EstConc	Area	Relative to ISTD	R.T.
2.87	4.46 ng/ul	123657	1,4-Dichlorobenzene-d4	7.66

Hit#	of	Tentative ID	MW	MolForm	CAS#	Qual
1	5	Butane, 2-methoxy-2-methyl-	102	C6H14O	000994-05-8	83
2		Butane, 2-methoxy-2-methyl-	102	C6H14O	000994-05-8	50
3		Pentane, 3-methoxy-	102	C6H14O	036839-67-5	12
4		N-Ethylformamide	73	C3H7NO	000627-45-2	9
5		1,3-Dioxolane, 2-methyl-	88	C4H8O2	000497-26-7	9



Data Path : S:\HPCHEM1\BNA\_M\DATA\BM072015\  
Data File : BM001983.D  
Acq On : 20 Jul 2015 20:42  
Operator : TP/UM  
Sample : G3000-05  
Misc :  
ALS Vial : 16 Sample Multiplier: 1

Instrument :  
BNA\_M  
ClientSampleId :  
C02B1

Quant Method : Z:\HPCHEM1\BNA\_M\METHODS\SOM02.2-EPA-BM071315.M  
Quant Title : SVOA CALIBRATION

TIC Library : C:\DATABASE\NIST02.L  
TIC Integration Parameters: LSCINT.P

TIC Top Hit name	RT	EstConc	Units	Response	--Internal Standard--			
					#	RT	Resp	Conc
Butane, 2-methoxy...	2.87	4.5	ng/ul	123657	1	7.66	554357	20.0