

Data Path : Z:\svoasrv\HPCHEM1\BNA_M\Data\BM072121\
 Data File : BM031044.D
 Acq On : 21 Jul 2021 14:30
 Operator : CG/JU
 Sample : M2940-09
 Misc : MDL-MDL-WATER- 8PPM
 ALS Vial : 9 Sample Multiplier: 1

Instrument :
 BNA_M
 ClientSampled :

Quant Time: Jul 21 15:00:48 2021
 Quant Method : Z:\svoasrv\HPCHEM1\BNA_M\Methods\8270-BM072021.M
 Quant Title : ASP BNA STANDARDS FOR 5 POINT CALIBRATION
 QLast Update : Wed Jul 21 11:41:39 2021
 Response via : Initial Calibration

Compound	R.T.	QIon	Response	Conc	Units	Dev(Min)	
Internal Standards							
1) 1,4-Dichlorobenzene-d4	7.634	152	103988	20.000	ng	0.00	
21) Naphthalene-d8	10.404	136	465651	20.000	ng	0.00	
39) Acenaphthene-d10	14.269	164	354824	20.000	ng	0.00	
64) Phenanthrene-d10	17.015	188	836783	20.000	ng	0.00	
76) Chrysene-d12	21.203	240	987802	20.000	ng	0.00	
86) Perylene-d12	23.386	264	1028375	20.000	ng	0.00	
System Monitoring Compounds							
5) 2-Fluorophenol	5.257	112	748009	129.169	ng	0.00	
7) Phenol-d6	6.822	99	1123372	133.818	ng	0.00	
23) Nitrobenzene-d5	8.787	82	811782	87.532	ng	0.00	
42) 2,4,6-Tribromophenol	15.763	330	575694	124.249	ng	0.00	
45) 2-Fluorobiphenyl	12.886	172	1937441	81.471	ng	0.00	
79) Terphenyl-d14	19.656	244	3914651	78.409	ng	0.00	
Target Compounds							
2) 1,4-Dioxane	3.240	88	18345	7.884	ng		Qvalue # 93
3) Pyridine	3.628	79	45693	6.941	ng		# 88
4) n-Nitrosodimethylamine	3.540	42	28412	7.594	ng		90
6) Aniline	6.975	93	83573	9.273	ng		99
8) 2-Chlorophenol	7.204	128	54056	7.930	ng		99
9) Benzaldehyde	6.793	77	52990	10.594	ng		93
10) Phenol	6.846	94	66470	8.173	ng		94
11) bis(2-Chloroethyl)ether	7.075	93	50429	8.376	ng		98
12) 1,3-Dichlorobenzene	7.528	146	57845	7.804	ng		95
13) 1,4-Dichlorobenzene	7.669	146	59648	7.907	ng		97
14) 1,2-Dichlorobenzene	7.981	146	56735	7.700	ng		96
15) Benzyl Alcohol	7.875	79	55035	7.788	ng		98
16) 2,2'-oxybis(1-Chloropr...	8.163	45	68468	9.089	ng		96
17) 2-Methylphenol	8.075	107	45680	8.028	ng		96
18) Hexachloroethane	8.698	117	23542	8.086	ng		96
19) n-Nitroso-di-n-propyla...	8.440	70	47778	8.059	ng		98
20) 3+4-Methylphenols	8.398	107	63409	7.881	ng		95
22) Acetophenone	8.451	105	96099	8.337	ng		95
24) Nitrobenzene	8.828	77	75665	8.080	ng		99
25) Isophorone	9.345	82	124559	7.511	ng		97
26) 2-Nitrophenol	9.528	139	28951	7.342	ng		# 86
27) 2,4-Dimethylphenol	9.592	122	53849	8.668	ng		98
28) bis(2-Chloroethoxy)met...	9.834	93	71432	8.543	ng		99
29) 2,4-Dichlorophenol	10.051	162	55768	7.589	ng		95
30) 1,2,4-Trichlorobenzene	10.269	180	62359	7.728	ng		97
31) Naphthalene	10.451	128	186443	7.782	ng		99
32) Benzoic acid	9.669	122	26794	5.062	ng		92
33) 4-Chloroaniline	10.569	127	84061	8.133	ng		97
34) Hexachlorobutadiene	10.739	225	39684	7.658	ng		97
35) Caprolactam	11.339	113	21005	8.503	ng		95
36) 4-Chloro-3-methylphenol	11.692	107	64814	7.729	ng		96
37) 2-Methylnaphthalene	12.069	142	148933	8.064	ng		97
38) 1-Methylnaphthalene	12.069	142	148933	8.469	ng		98
40) 1,2,4,5-Tetrachloroben...	12.439	216	78163	7.907	ng		98
41) Hexachlorocyclopentadiene	12.422	237	47654	8.665	ng		97
43) 2,4,6-Trichlorophenol	12.686	196	48952	7.049	ng		98

Data Path : Z:\svoasrv\HPCHEM1\BNA_M\Data\BM072121\
 Data File : BM031044.D
 Acq On : 21 Jul 2021 14:30
 Operator : CG/JU
 Sample : M2940-09
 Misc : MDL-MDL-WATER- 8PPM
 ALS Vial : 9 Sample Multiplier: 1

Instrument :
 BNA_M
 ClientSampleId :

Quant Time: Jul 21 15:00:48 2021
 Quant Method : Z:\svoasrv\HPCHEM1\BNA_M\Methods\8270-BM072021.M
 Quant Title : ASP BNA STANDARDS FOR 5 POINT CALIBRATION
 QLast Update : Wed Jul 21 11:41:39 2021
 Response via : Initial Calibration

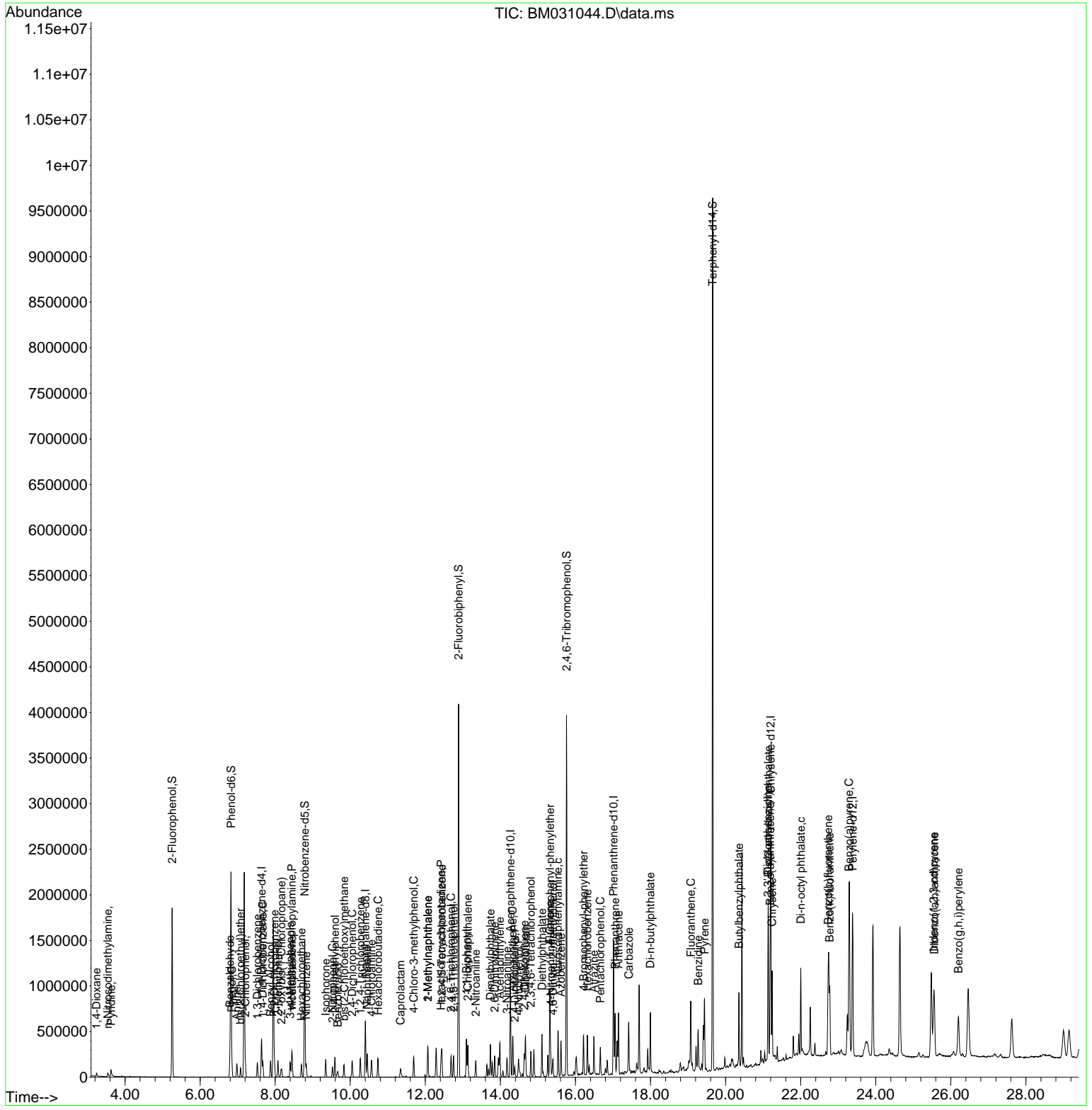
Compound	R.T.	QIon	Response	Conc	Units	Dev(Min)
44) 2,4,5-Trichlorophenol	12.751	196	54694	7.114	ng	# 94
46) 1,1'-Biphenyl	13.098	154	203811	8.101	ng	99
47) 2-Chloronaphthalene	13.133	162	154572	7.844	ng	94
48) 2-Nitroaniline	13.345	65	44170	7.034	ng	100
49) Acenaphthylene	13.986	152	250734	7.960	ng	98
50) Dimethylphthalate	13.733	163	201078	7.555	ng	99
51) 2,6-Dinitrotoluene	13.845	165	40729	6.832	ng	# 84
52) Acenaphthene	14.327	154	153874	7.763	ng	99
53) 3-Nitroaniline	14.174	138	42712	7.092	ng	96
54) 2,4-Dinitrophenol	14.380	184	21434	6.096	ng	90
55) Dibenzofuran	14.669	168	258464	7.951	ng	95
56) 4-Nitrophenol	14.486	139	38285	7.188	ng	87
57) 2,4-Dinitrotoluene	14.639	165	57704	6.951	ng	# 82
58) Fluorene	15.316	166	223070	8.134	ng	98
59) 2,3,4,6-Tetrachlorophenol	14.810	232	47343	6.608	ng	92
60) Diethylphthalate	15.110	149	239731	8.402	ng	97
61) 4-Chlorophenyl-phenylether	15.321	204	111570	8.216	ng	# 86
62) 4-Nitroaniline	15.339	138	47458	7.143	ng	93
63) Azobenzene	15.616	77	209387	7.373	ng	94
65) 4,6-Dinitro-2-methylph...	15.398	198	31187	5.942	ng	81
66) n-Nitrosodiphenylamine	15.533	169	176604	7.180	ng	98
67) 4-Bromophenyl-phenylether	16.215	248	70963	8.196	ng	94
68) Hexachlorobenzene	16.315	284	75997	7.790	ng	95
69) Atrazine	16.492	200	67905	7.520	ng	97
70) Pentachlorophenol	16.663	266	42943	6.733	ng	97
71) Phenanthrene	17.057	178	374599	8.084	ng	98
72) Anthracene	17.145	178	378380	8.281	ng	99
73) Carbazole	17.421	167	322720	7.135	ng	98
74) Di-n-butylphthalate	17.998	149	451012	8.488	ng	99
75) Fluoranthene	19.074	202	433616	7.478	ng	99
77) Benzidine	19.268	184	209632	8.596	ng	98
78) Pyrene	19.439	202	448999	7.279	ng	98
80) Butylbenzylphthalate	20.356	149	203929	7.743	ng	98
81) Benzo(a)anthracene	21.186	228	451399	6.895	ng	98
82) 3,3'-Dichlorobenzidine	21.127	252	167930	9.358	ng	99
83) Chrysene	21.239	228	434158	6.826	ng	98
84) Bis(2-ethylhexyl)phtha...	21.139	149	418596	10.258	ng	94
85) Di-n-octyl phthalate	22.003	149	539567	7.722	ng	# 92
87) Indeno(1,2,3-cd)pyrene	25.544	276	521290	7.094	ng	99
88) Benzo(b)fluoranthene	22.733	252	475876	6.983	ng	99
89) Benzo(k)fluoranthene	22.774	252	462962	7.264	ng	99
90) Benzo(a)pyrene	23.286	252	476303	7.765	ng	99
91) Dibenzo(a,h)anthracene	25.562	278	442780	6.961	ng	99
92) Benzo(g,h,i)perylene	26.203	276	437322	7.215	ng	99

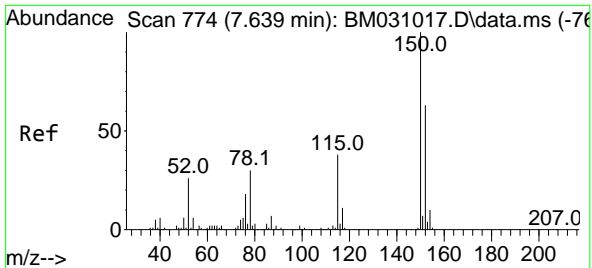
(#) = qualifier out of range (m) = manual integration (+) = signals summed

Data Path : Z:\svoasrv\HPCHEM1\BNA_M\Data\BM072121\
 Data File : BM031044.D
 Acq On : 21 Jul 2021 14:30
 Operator : CG/JU
 Sample : M2940-09
 Misc : MDL-MDL-WATER- 8PPM
 ALS Vial : 9 Sample Multiplier: 1

Instrument :
 BNA_M
 ClientSampled :

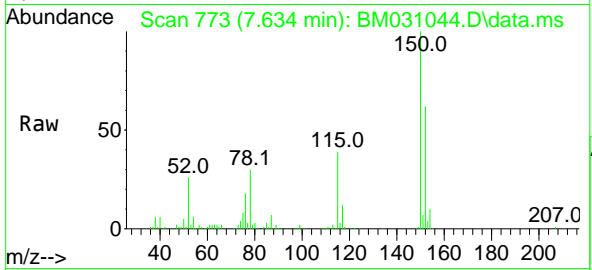
Quant Time: Jul 21 15:00:48 2021
 Quant Method : Z:\svoasrv\HPCHEM1\BNA_M\Methods\8270-BM072021.M
 Quant Title : ASP BNA STANDARDS FOR 5 POINT CALIBRATION
 QLast Update : Wed Jul 21 11:41:39 2021
 Response via : Initial Calibration



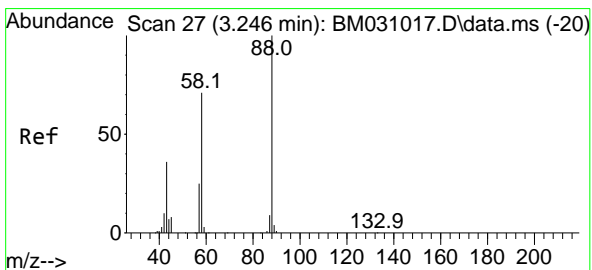
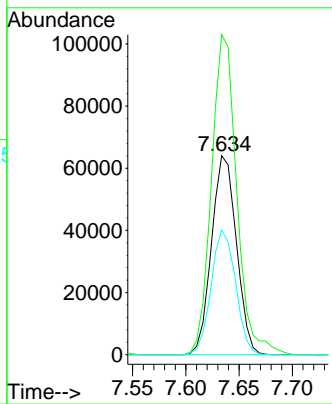
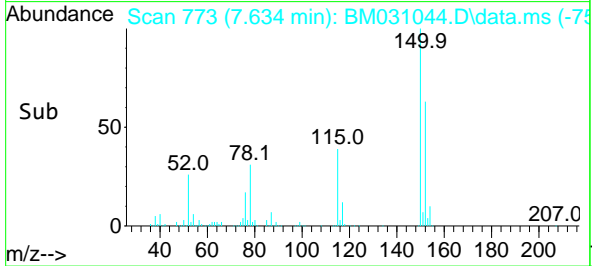


#1
 1,4-Dichlorobenzene-d4
 Concen: 20.000 ng
 RT: 7.634 min Scan# 773
 Delta R.T. -0.005 min
 Lab File: BM031044.D
 Acq: 21 Jul 2021 14:30

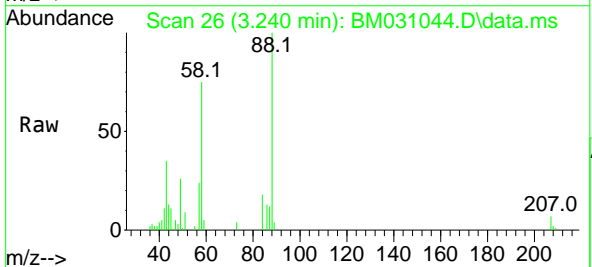
Instrument :
 BNA_M
 ClientSampled :



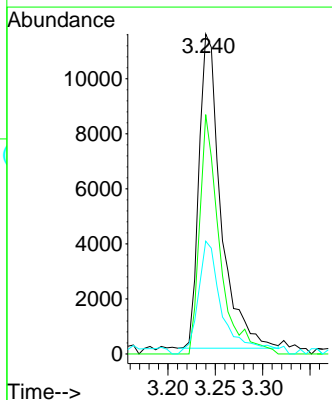
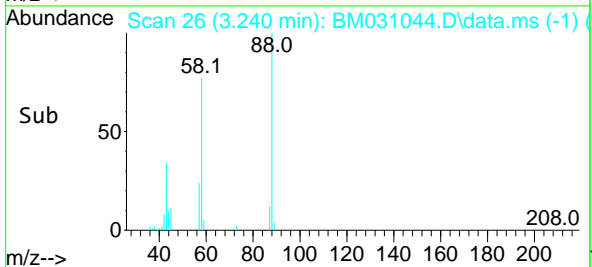
Tgt Ion:152 Resp: 103988
 Ion Ratio Lower Upper
 152 100
 150 160.8 125.9 188.9
 115 62.7 44.6 67.0

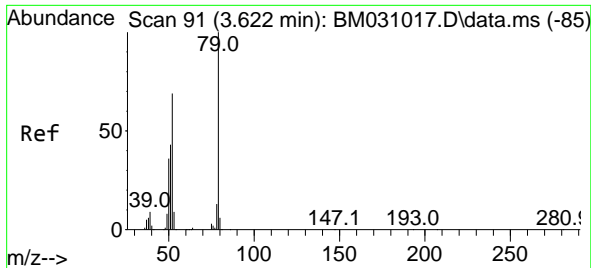


#2
 1,4-Dioxane
 Concen: 7.884 ng
 RT: 3.240 min Scan# 26
 Delta R.T. -0.006 min
 Lab File: BM031044.D
 Acq: 21 Jul 2021 14:30



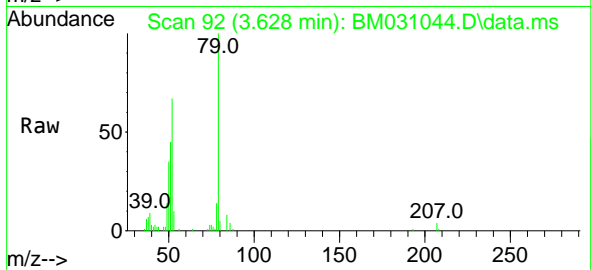
Tgt Ion: 88 Resp: 18345
 Ion Ratio Lower Upper
 88 100
 58 69.4 53.6 80.4
 43 40.2 25.8 38.6#



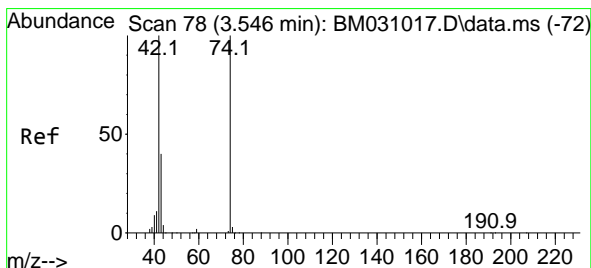
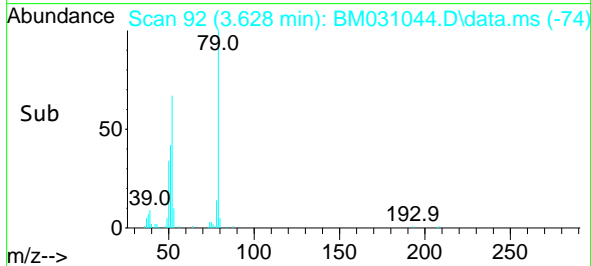
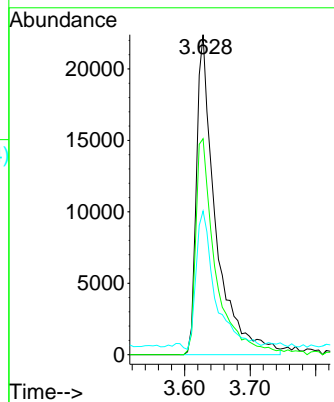


#3
 Pyridine
 Concen: 6.941 ng
 RT: 3.628 min Scan# 92
 Delta R.T. 0.006 min
 Lab File: BM031044.D
 Acq: 21 Jul 2021 14:30

Instrument :
 BNA_M
 ClientSampled :

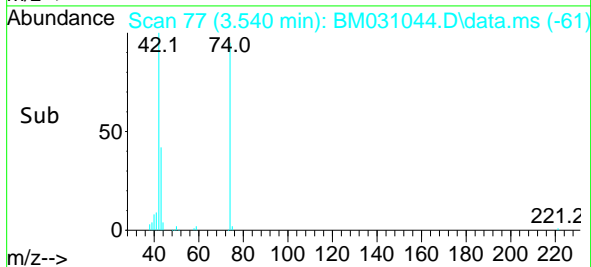
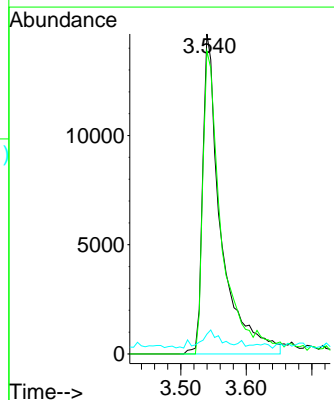
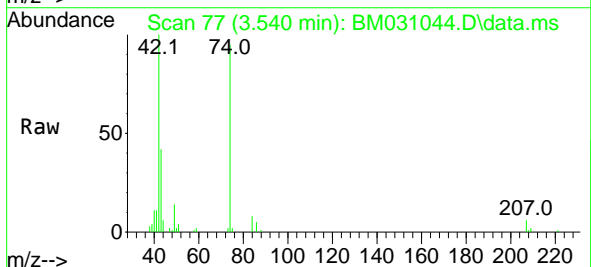


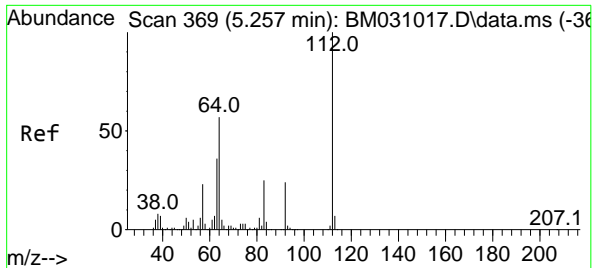
Tgt Ion: 79 Resp: 45693
 Ion Ratio Lower Upper
 79 100
 52 67.5 48.2 72.2
 51 44.9 27.9 41.9#



#4
 n-Nitrosodimethylamine
 Concen: 7.594 ng
 RT: 3.540 min Scan# 77
 Delta R.T. -0.006 min
 Lab File: BM031044.D
 Acq: 21 Jul 2021 14:30

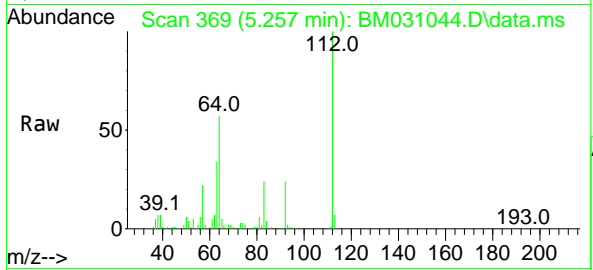
Tgt Ion: 42 Resp: 28412
 Ion Ratio Lower Upper
 42 100
 74 94.6 84.1 126.1
 44 6.2 4.5 6.7



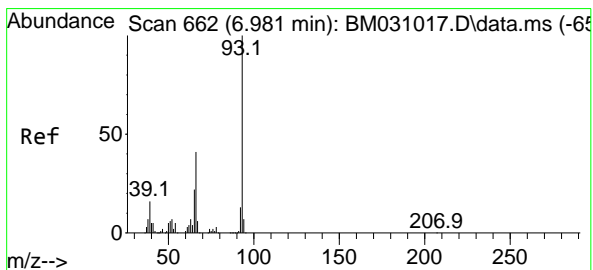
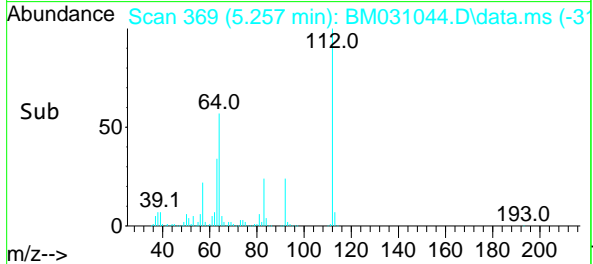
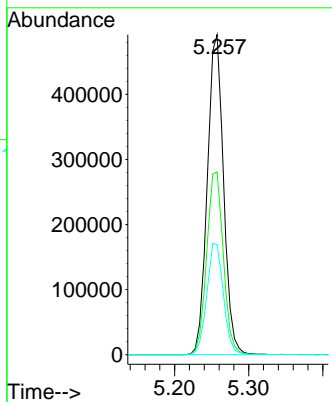


#5
 2-Fluorophenol
 Concen: 129.169 ng
 RT: 5.257 min Scan# 369
 Delta R.T. 0.000 min
 Lab File: BM031044.D
 Acq: 21 Jul 2021 14:30

Instrument :
 BNA_M
 ClientSampled :

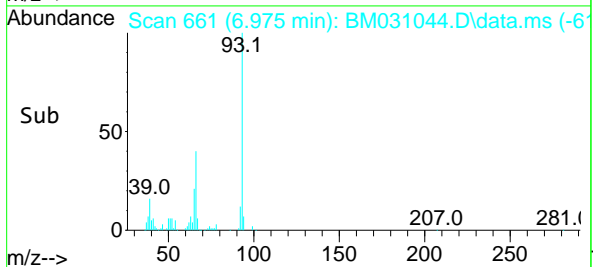
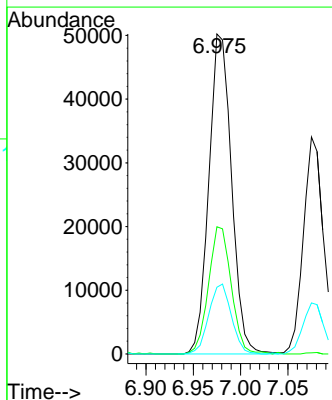
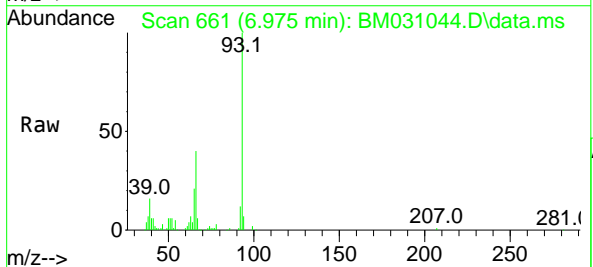


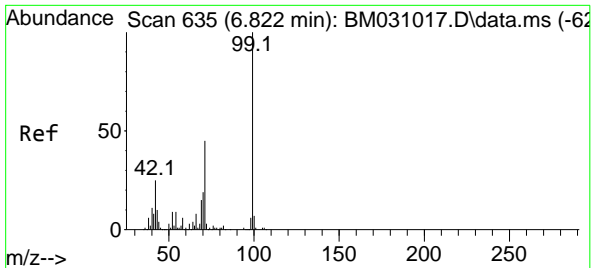
Tgt Ion:112 Resp: 748009
 Ion Ratio Lower Upper
 112 100
 64 57.1 47.1 70.7
 63 34.4 27.3 40.9



#6
 Aniline
 Concen: 9.273 ng
 RT: 6.975 min Scan# 661
 Delta R.T. -0.006 min
 Lab File: BM031044.D
 Acq: 21 Jul 2021 14:30

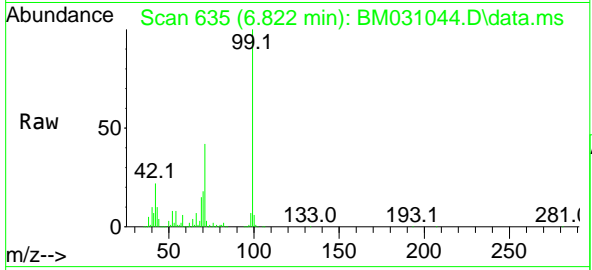
Tgt Ion: 93 Resp: 83573
 Ion Ratio Lower Upper
 93 100
 66 39.8 32.7 49.1
 65 20.8 16.8 25.2





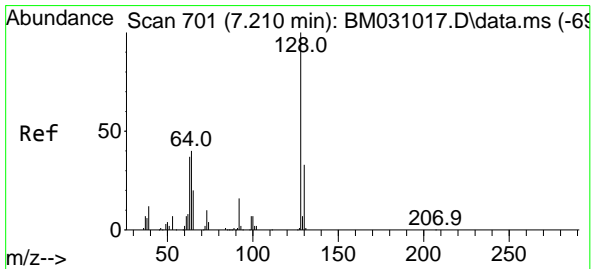
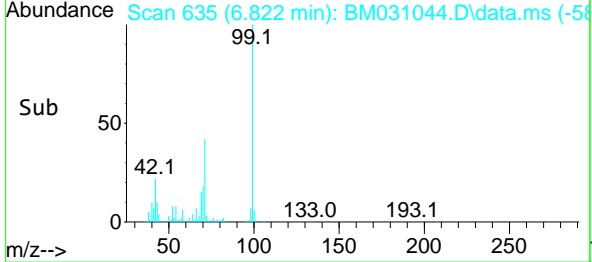
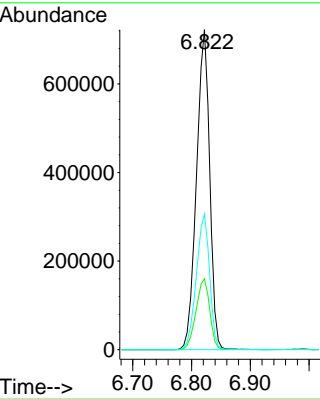
#7
 Phenol-d6
 Concen: 133.818 ng
 RT: 6.822 min Scan# 635
 Delta R.T. 0.000 min
 Lab File: BM031044.D
 Acq: 21 Jul 2021 14:30

Instrument :
 BNA_M
 ClientSampled :

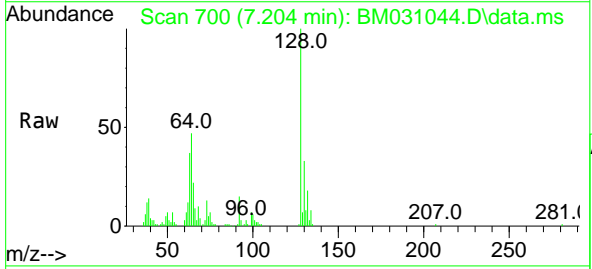


Tgt Ion: 99 Resp: 1123372

Ion	Ratio	Lower	Upper
99	100		
42	22.2	18.0	27.0
71	42.4	30.9	46.3

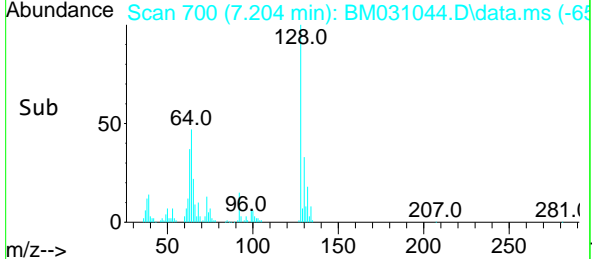
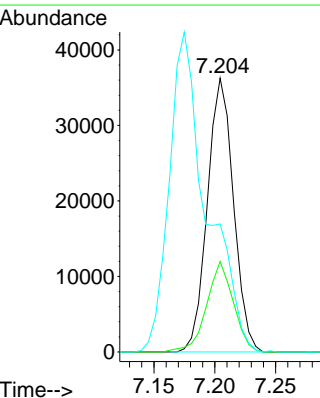


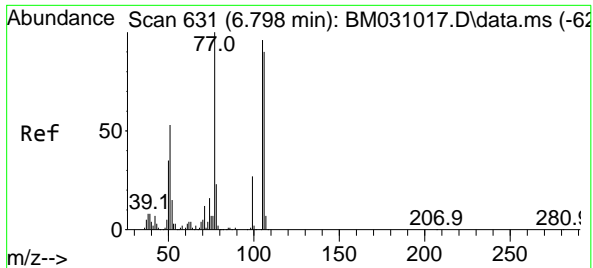
#8
 2-Chlorophenol
 Concen: 7.930 ng
 RT: 7.204 min Scan# 700
 Delta R.T. -0.006 min
 Lab File: BM031044.D
 Acq: 21 Jul 2021 14:30



Tgt Ion: 128 Resp: 54056

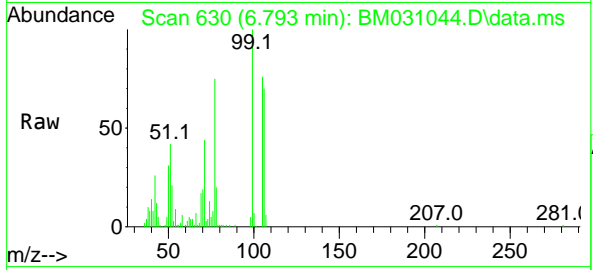
Ion	Ratio	Lower	Upper
128	100		
130	33.0	13.5	53.5
64	46.8	25.7	65.7





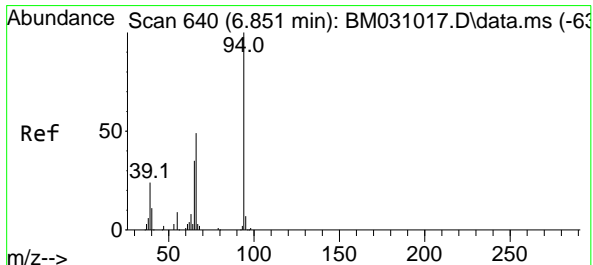
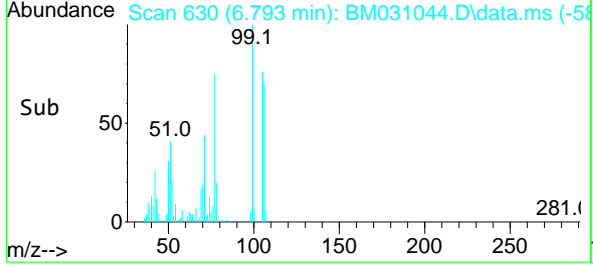
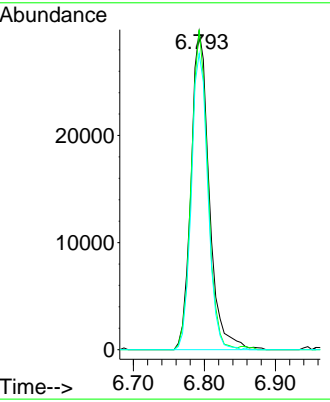
#9
Benzaldehyde
Concen: 10.594 ng
RT: 6.793 min Scan# 630
Delta R.T. -0.006 min
Lab File: BM031044.D
Acq: 21 Jul 2021 14:30

Instrument :
BNA_M
ClientSampled :

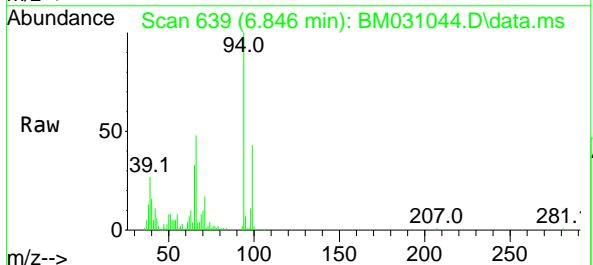


Tgt Ion: 77 Resp: 52990

Ion	Ratio	Lower	Upper
77	100		
105	100.5	71.2	111.2
106	93.0	68.6	108.6

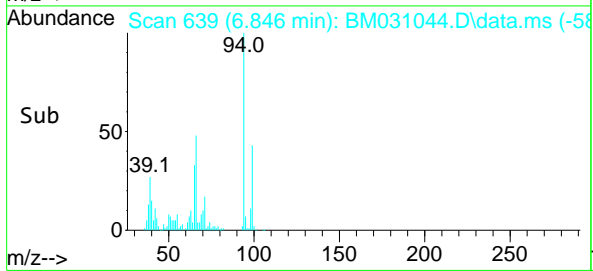
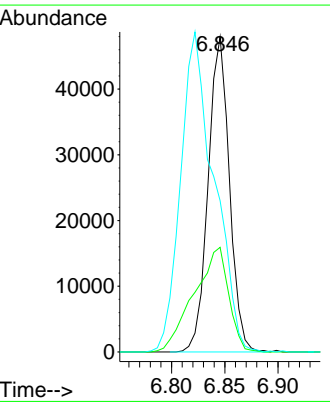


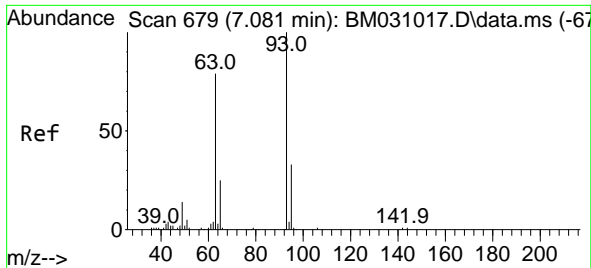
#10
Phenol
Concen: 8.173 ng
RT: 6.846 min Scan# 639
Delta R.T. -0.006 min
Lab File: BM031044.D
Acq: 21 Jul 2021 14:30



Tgt Ion: 94 Resp: 66470

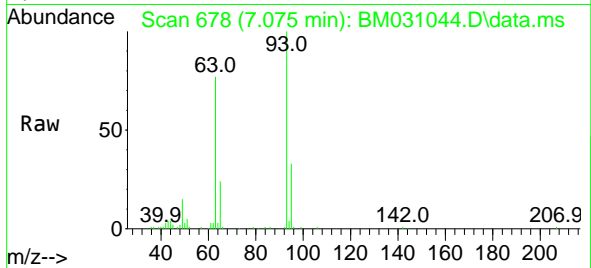
Ion	Ratio	Lower	Upper
94	100		
65	33.2	11.9	51.9
66	48.0	22.6	62.6





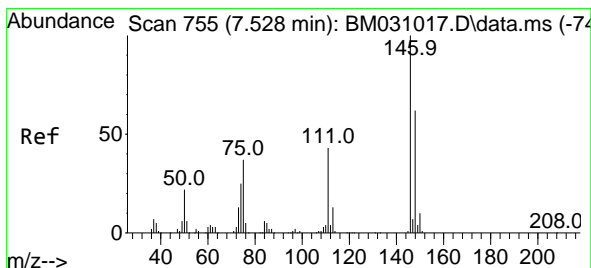
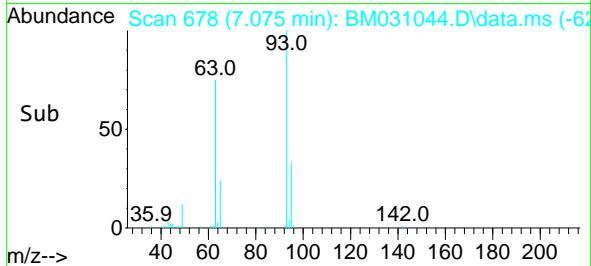
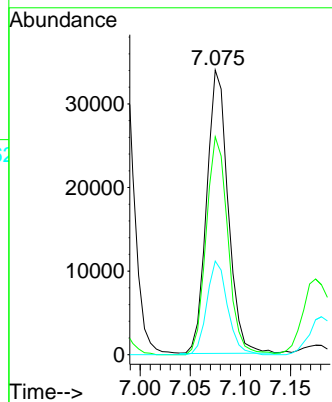
#11
 bis(2-Chloroethyl)ether
 Concen: 8.376 ng
 RT: 7.075 min Scan# 678
 Delta R.T. -0.006 min
 Lab File: BM031044.D
 Acq: 21 Jul 2021 14:30

Instrument :
 BNA_M
 ClientSampled :

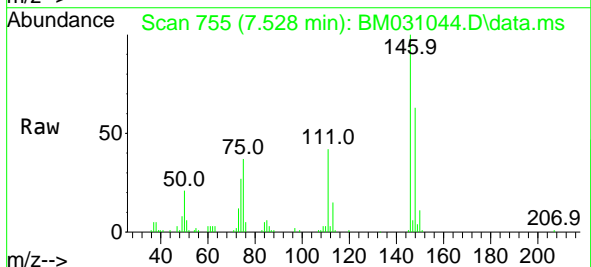


Tgt Ion: 93 Resp: 50429

Ion	Ratio	Lower	Upper
93	100		
63	76.6	54.3	94.3
95	32.9	12.7	52.7

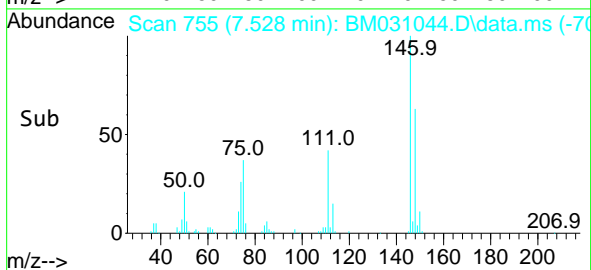
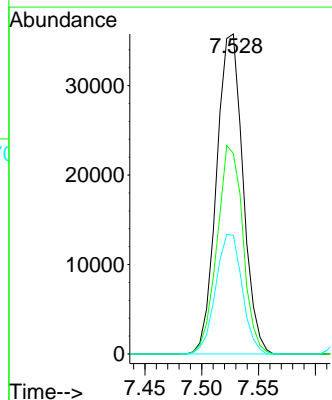


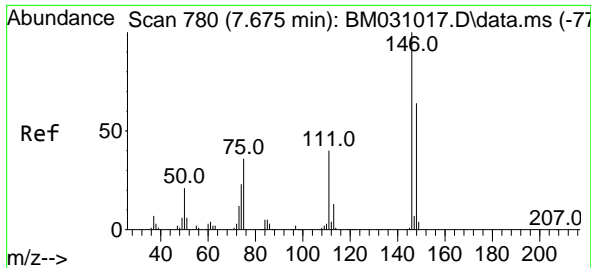
#12
 1,3-Dichlorobenzene
 Concen: 7.804 ng
 RT: 7.528 min Scan# 755
 Delta R.T. 0.000 min
 Lab File: BM031044.D
 Acq: 21 Jul 2021 14:30



Tgt Ion: 146 Resp: 57845

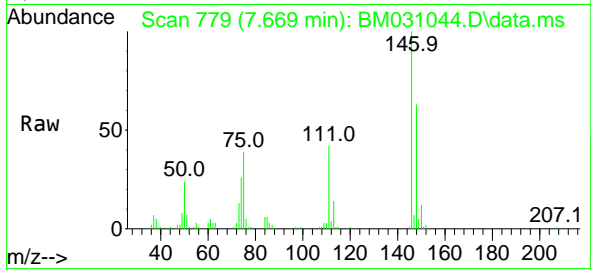
Ion	Ratio	Lower	Upper
146	100		
148	62.6	52.2	78.4
75	37.1	25.8	38.8



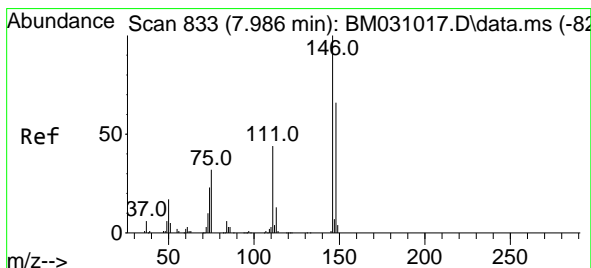
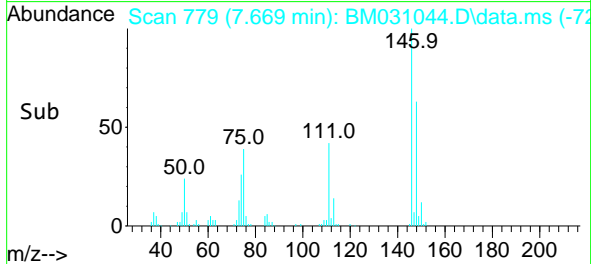
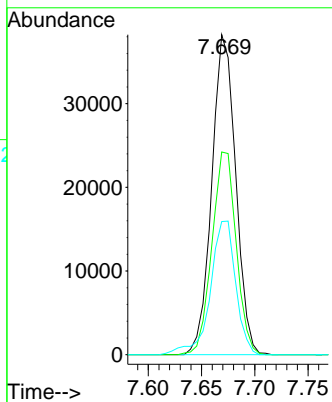


#13
 1,4-Dichlorobenzene
 Concen: 7.907 ng
 RT: 7.669 min Scan# 779
 Delta R.T. -0.006 min
 Lab File: BM031044.D
 Acq: 21 Jul 2021 14:30

Instrument :
 BNA_M
 ClientSampled :

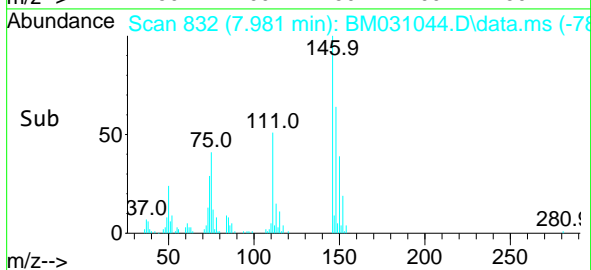
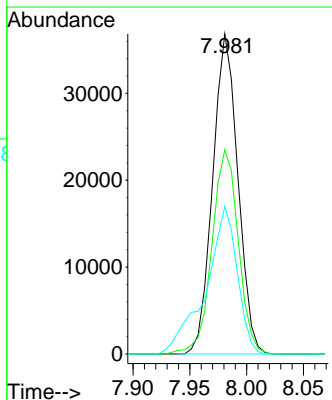
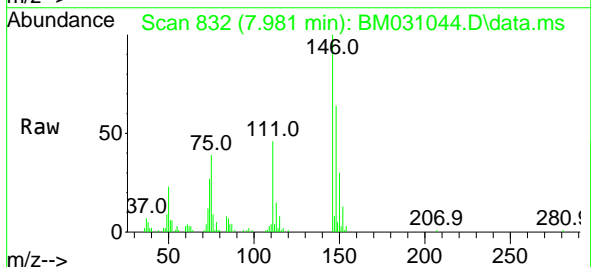


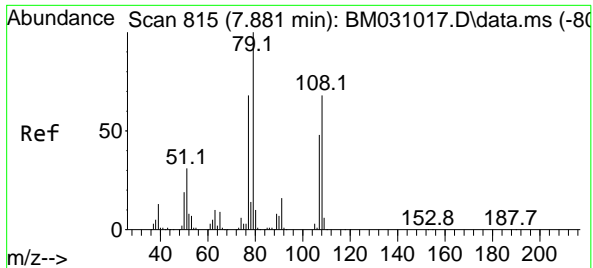
Tgt Ion:146 Resp: 59648
 Ion Ratio Lower Upper
 146 100
 148 63.4 51.8 77.8
 111 41.6 31.0 46.6



#14
 1,2-Dichlorobenzene
 Concen: 7.700 ng
 RT: 7.981 min Scan# 832
 Delta R.T. -0.006 min
 Lab File: BM031044.D
 Acq: 21 Jul 2021 14:30

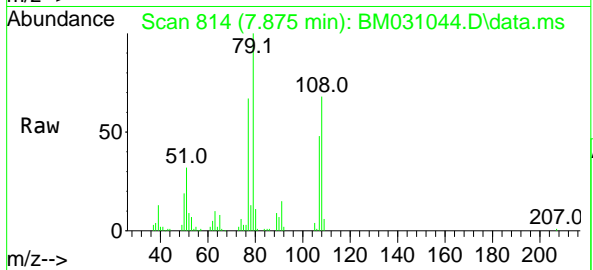
Tgt Ion:146 Resp: 56735
 Ion Ratio Lower Upper
 146 100
 148 63.8 51.7 77.5
 111 46.1 32.6 49.0





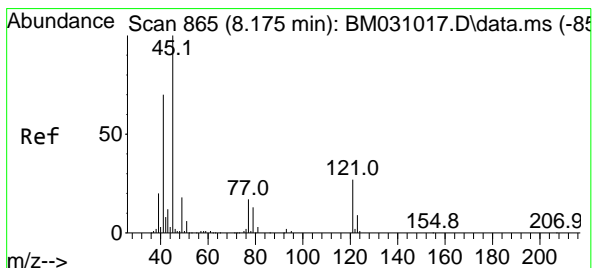
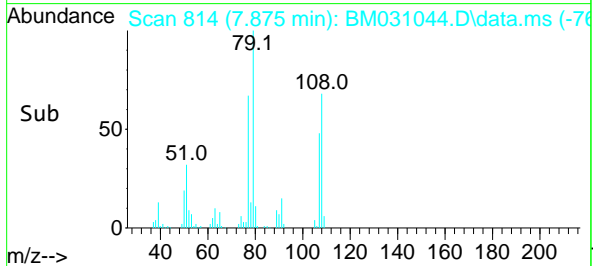
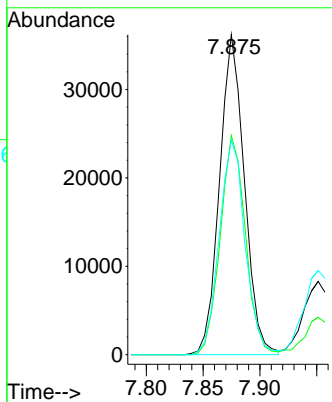
#15
 Benzyl Alcohol
 Concen: 7.788 ng
 RT: 7.875 min Scan# 814
 Delta R.T. -0.006 min
 Lab File: BM031044.D
 Acq: 21 Jul 2021 14:30

Instrument :
 BNA_M
 ClientSampled :

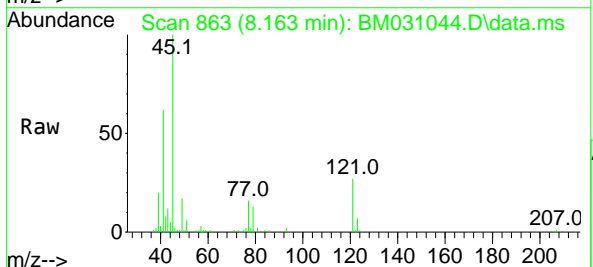


Tgt Ion: 79 Resp: 55035

Ion	Ratio	Lower	Upper
79	100		
108	68.4	57.0	85.4
77	67.1	54.6	81.8

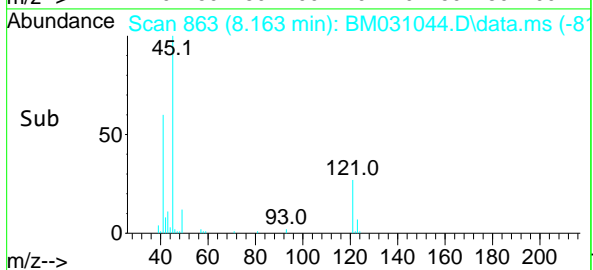
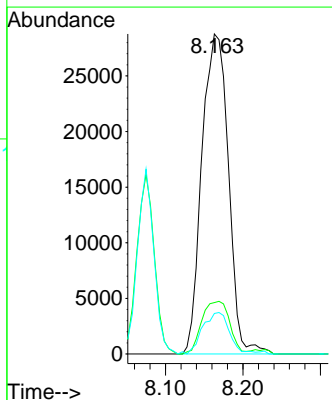


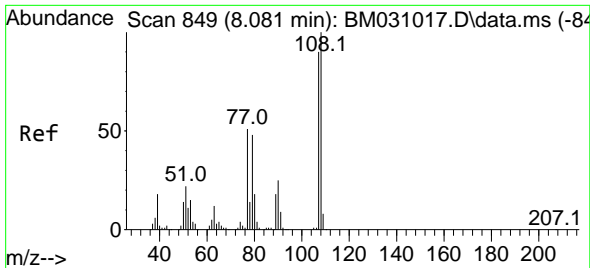
#16
 2,2'-oxybis(1-Chloropropane)
 Concen: 9.089 ng
 RT: 8.163 min Scan# 863
 Delta R.T. -0.012 min
 Lab File: BM031044.D
 Acq: 21 Jul 2021 14:30



Tgt Ion: 45 Resp: 68468

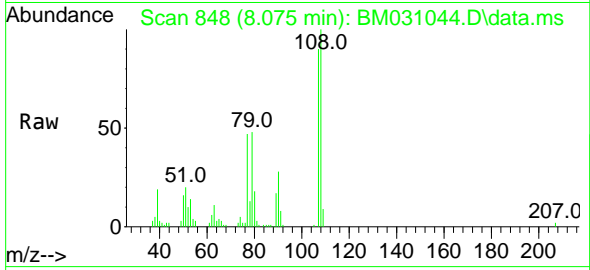
Ion	Ratio	Lower	Upper
45	100		
77	16.1	0.0	38.0
79	12.7	0.0	34.1





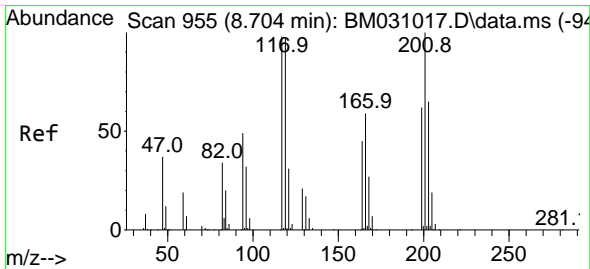
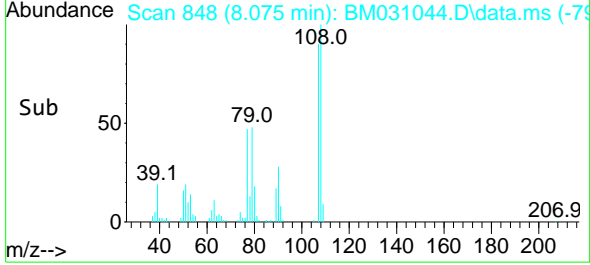
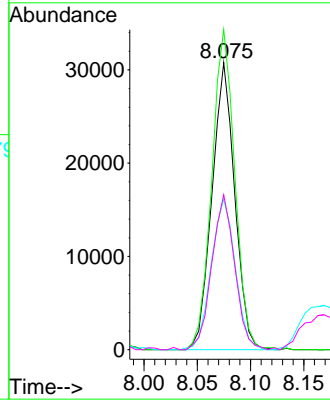
#17
 2-Methylphenol
 Concen: 8.028 ng
 RT: 8.075 min Scan# 848
 Delta R.T. -0.006 min
 Lab File: BM031044.D
 Acq: 21 Jul 2021 14:30

Instrument :
 BNA_M
 ClientSampled :



Tgt Ion:107 Resp: 45680

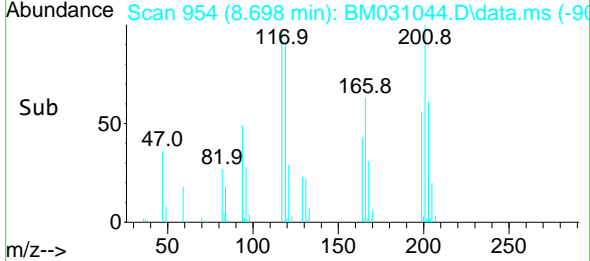
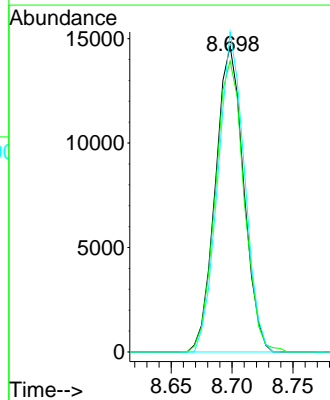
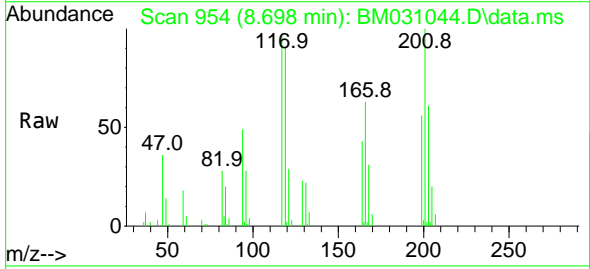
Ion	Ratio	Lower	Upper
107	100		
108	111.5	85.0	127.6
77	52.5	41.3	61.9
79	54.0	40.7	61.1

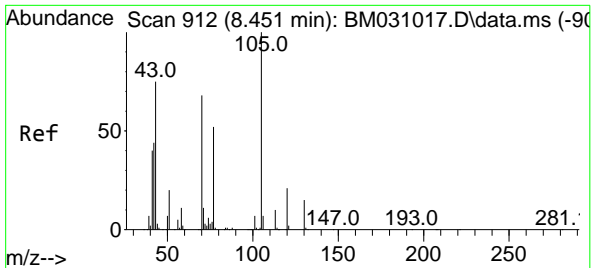


#18
 Hexachloroethane
 Concen: 8.086 ng
 RT: 8.698 min Scan# 954
 Delta R.T. -0.006 min
 Lab File: BM031044.D
 Acq: 21 Jul 2021 14:30

Tgt Ion:117 Resp: 23542

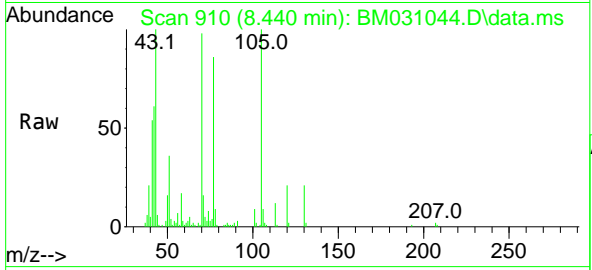
Ion	Ratio	Lower	Upper
117	100		
119	95.1	76.2	114.2
201	104.6	89.8	134.6





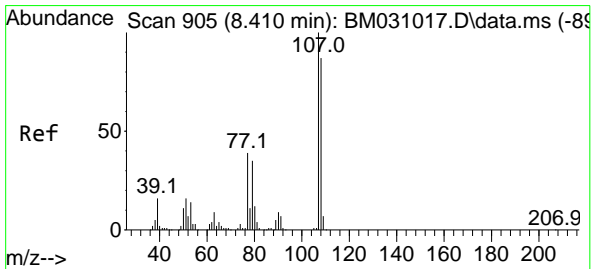
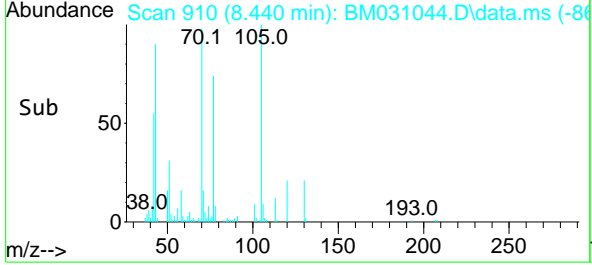
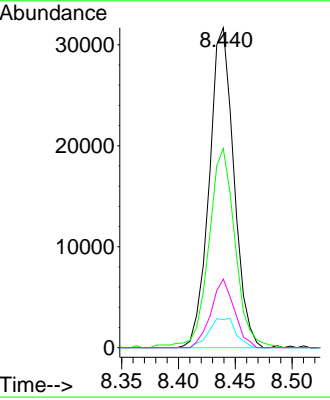
#19
 n-Nitroso-di-n-propylamine
 Concen: 8.059 ng
 RT: 8.440 min Scan# 910
 Delta R.T. -0.012 min
 Lab File: BM031044.D
 Acq: 21 Jul 2021 14:30

Instrument :
 BNA_M
 ClientSampled :

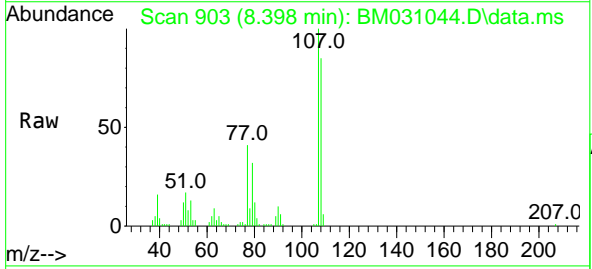


Tgt Ion: 70 Resp: 47778

Ion	Ratio	Lower	Upper
70	100		
42	62.2	51.4	77.0
101	8.8	8.1	12.1
130	21.4	17.8	26.6

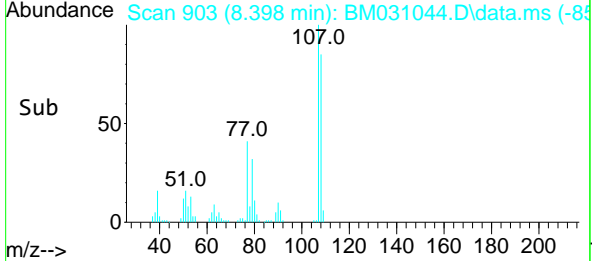
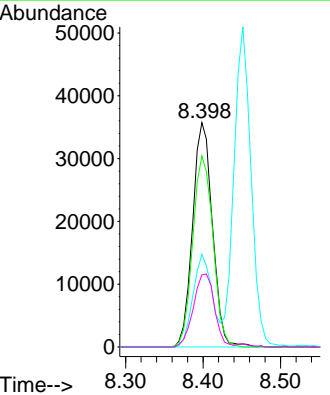


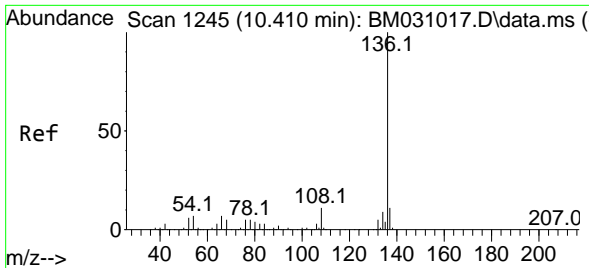
#20
 3+4-Methylphenols
 Concen: 7.881 ng
 RT: 8.398 min Scan# 903
 Delta R.T. -0.012 min
 Lab File: BM031044.D
 Acq: 21 Jul 2021 14:30



Tgt Ion: 107 Resp: 63409

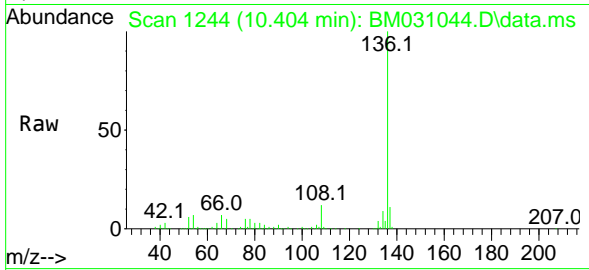
Ion	Ratio	Lower	Upper
107	100		
108	85.0	69.9	109.9
77	41.3	17.3	57.3
79	32.2	13.3	53.3



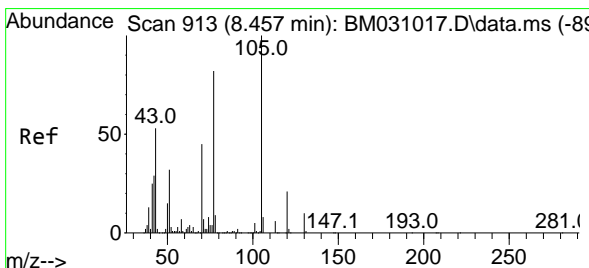
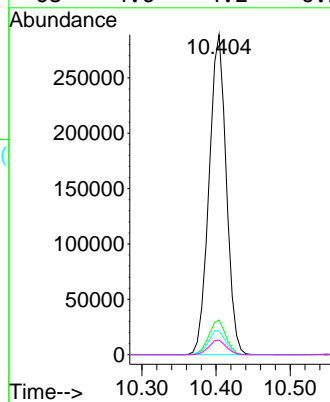
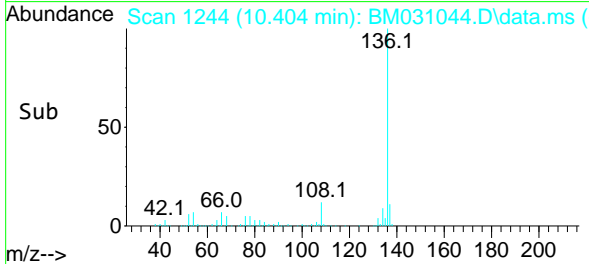


#21
 Naphthalene-d8
 Concen: 20.000 ng
 RT: 10.404 min Scan# 1244
 Delta R.T. -0.006 min
 Lab File: BM031044.D
 Acq: 21 Jul 2021 14:30

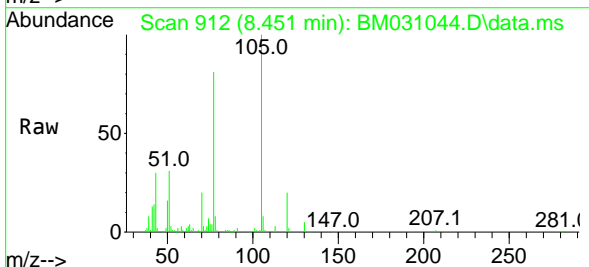
Instrument :
 BNA_M
 ClientSampled :



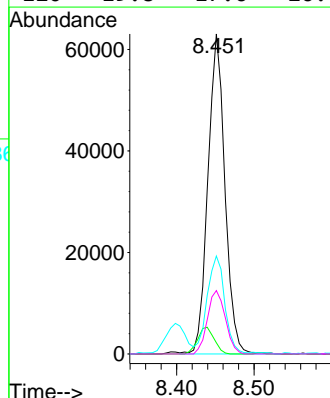
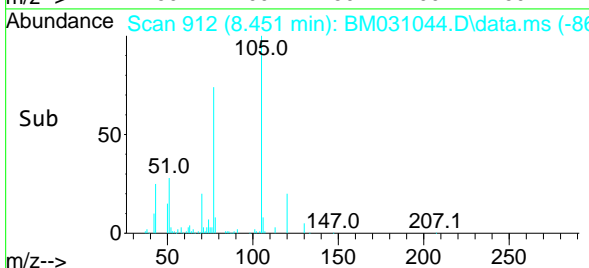
Tgt Ion:136 Resp: 465651
 Ion Ratio Lower Upper
 136 100
 137 10.9 8.4 12.6
 54 7.4 5.5 8.3
 68 4.6 4.2 6.2

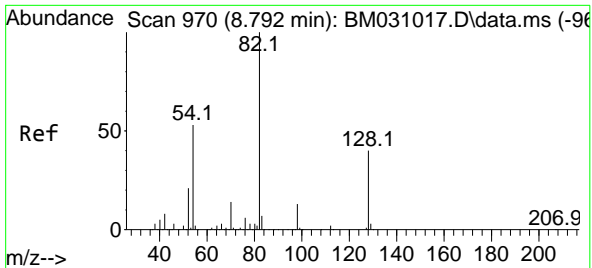


#22
 Acetophenone
 Concen: 8.337 ng
 RT: 8.451 min Scan# 912
 Delta R.T. -0.006 min
 Lab File: BM031044.D
 Acq: 21 Jul 2021 14:30



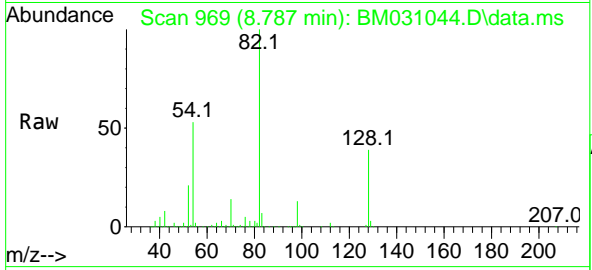
Tgt Ion:105 Resp: 96099
 Ion Ratio Lower Upper
 105 100
 71 3.5 3.4 5.0
 51 30.6 22.2 33.4
 120 19.8 17.6 26.4





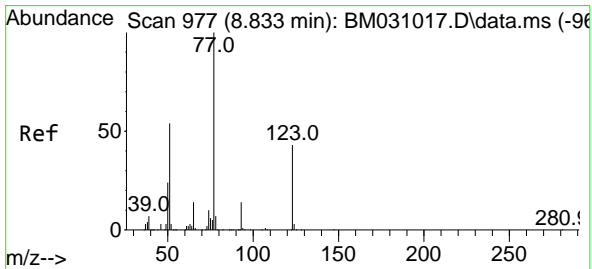
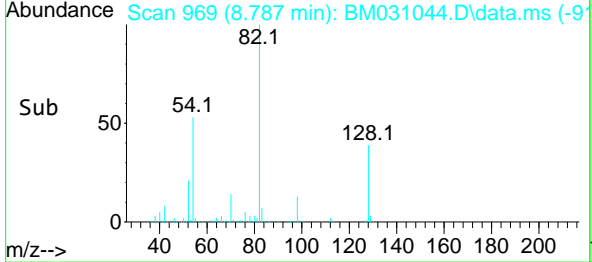
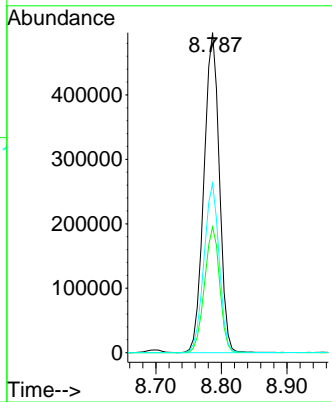
#23
 Nitrobenzene-d5
 Concen: 87.532 ng
 RT: 8.787 min Scan# 969
 Delta R.T. -0.006 min
 Lab File: BM031044.D
 Acq: 21 Jul 2021 14:30

Instrument :
 BNA_M
 ClientSampled :

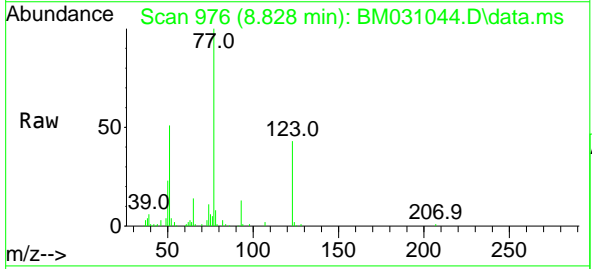


Tgt Ion: 82 Resp: 811782

Ion	Ratio	Lower	Upper
82	100		
128	39.3	31.1	46.7
54	52.9	37.3	55.9

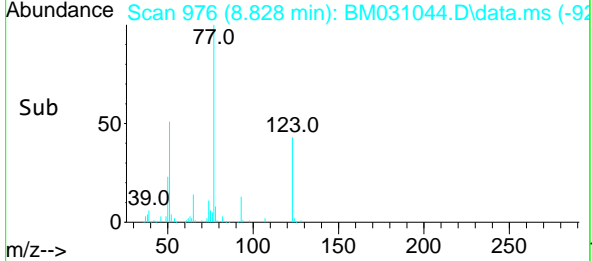
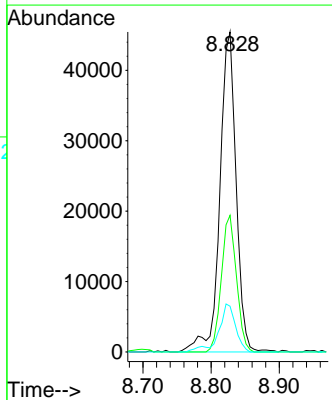


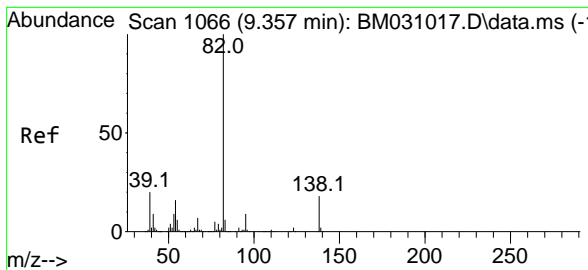
#24
 Nitrobenzene
 Concen: 8.080 ng
 RT: 8.828 min Scan# 976
 Delta R.T. -0.006 min
 Lab File: BM031044.D
 Acq: 21 Jul 2021 14:30



Tgt Ion: 77 Resp: 75665

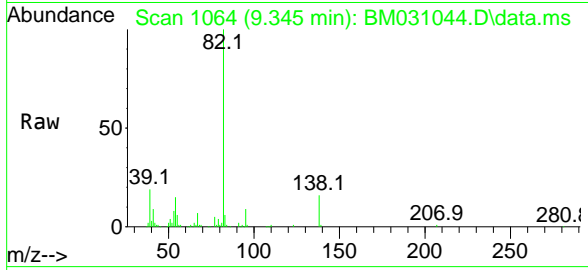
Ion	Ratio	Lower	Upper
77	100		
123	42.7	34.0	51.0
65	14.3	11.0	16.4





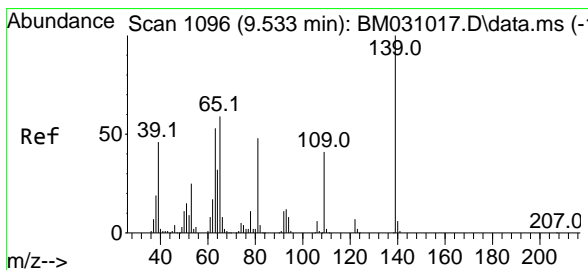
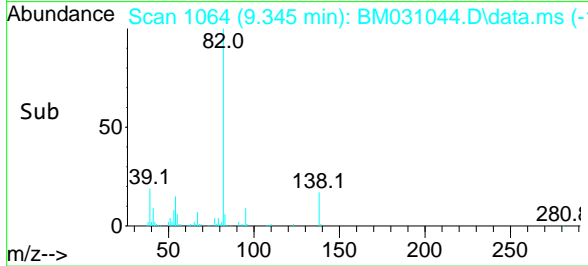
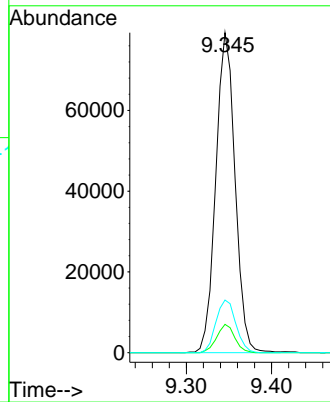
#25
 Isophorone
 Concen: 7.511 ng
 RT: 9.345 min Scan# 1064
 Delta R.T. -0.012 min
 Lab File: BM031044.D
 Acq: 21 Jul 2021 14:30

Instrument :
 BNA_M
 ClientSampled :



Tgt Ion: 82 Resp: 124559

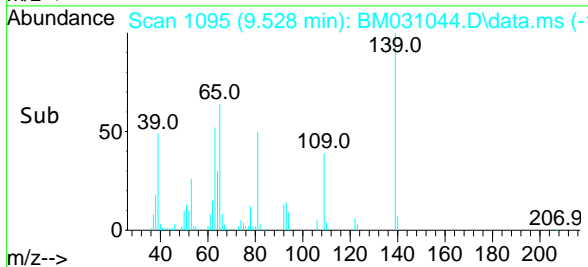
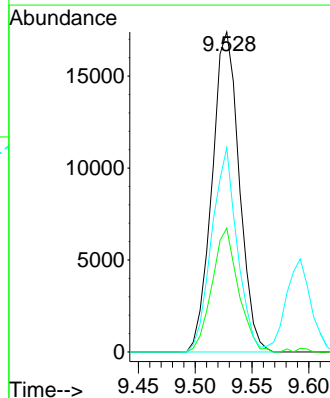
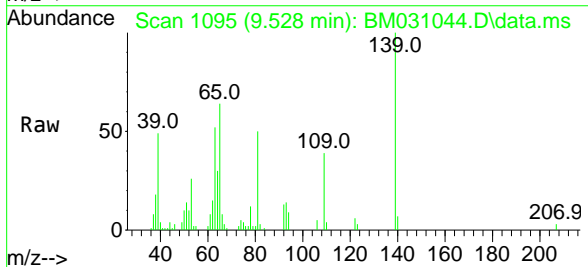
Ion	Ratio	Lower	Upper
82	100		
95	8.8	6.3	9.5
138	16.5	14.5	21.7

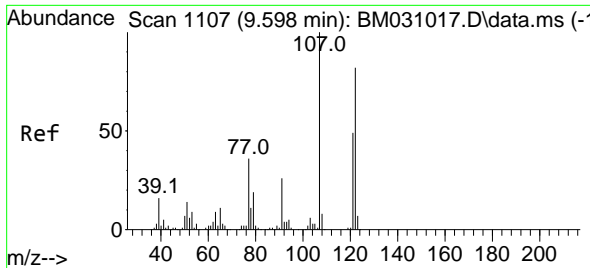


#26
 2-Nitrophenol
 Concen: 7.342 ng
 RT: 9.528 min Scan# 1095
 Delta R.T. -0.006 min
 Lab File: BM031044.D
 Acq: 21 Jul 2021 14:30

Tgt Ion: 139 Resp: 28951

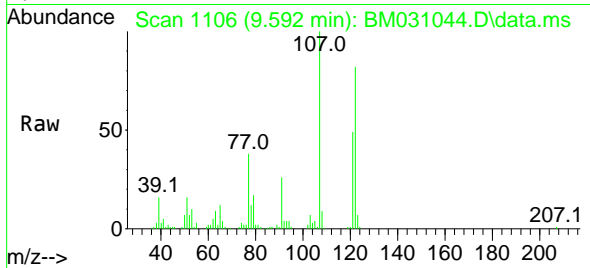
Ion	Ratio	Lower	Upper
139	100		
109	38.7	26.7	40.1
65	63.8	41.9	62.9#



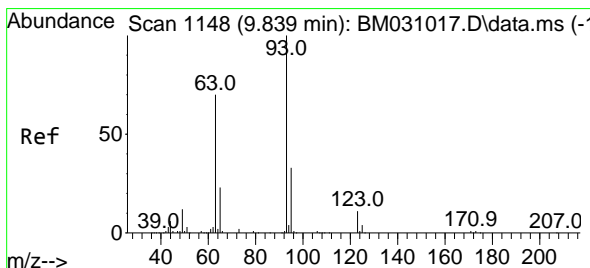
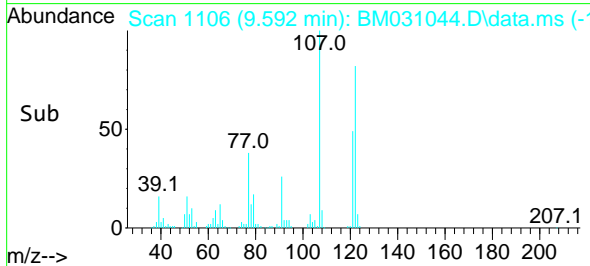
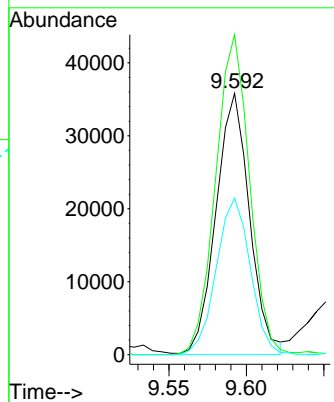


#27
 2,4-Dimethylphenol
 Concen: 8.668 ng
 RT: 9.592 min Scan# 1106
 Delta R.T. -0.006 min
 Lab File: BM031044.D
 Acq: 21 Jul 2021 14:30

Instrument :
 BNA_M
 ClientSampled :

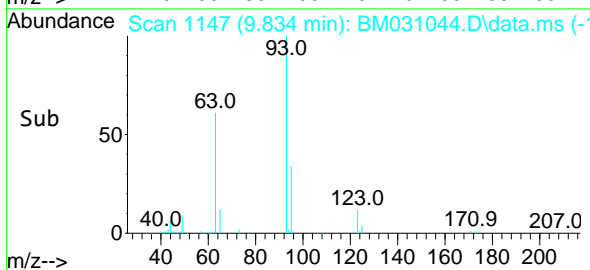
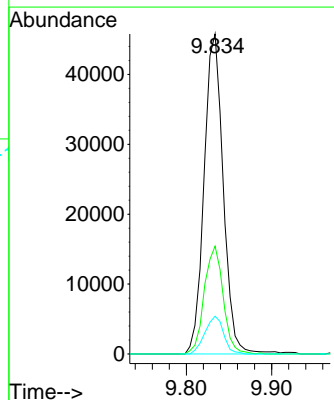
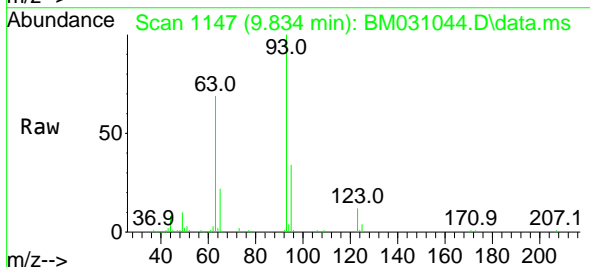


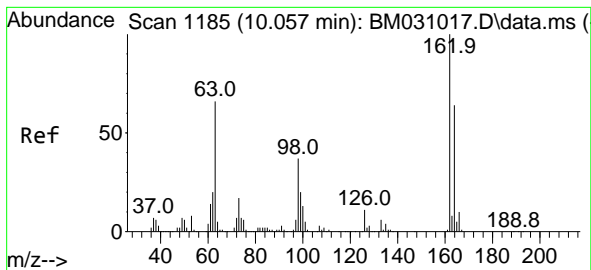
Tgt Ion:122 Resp: 53849
 Ion Ratio Lower Upper
 122 100
 107 122.5 95.0 142.6
 121 59.9 48.1 72.1



#28
 bis(2-Chloroethoxy)methane
 Concen: 8.543 ng
 RT: 9.834 min Scan# 1147
 Delta R.T. -0.006 min
 Lab File: BM031044.D
 Acq: 21 Jul 2021 14:30

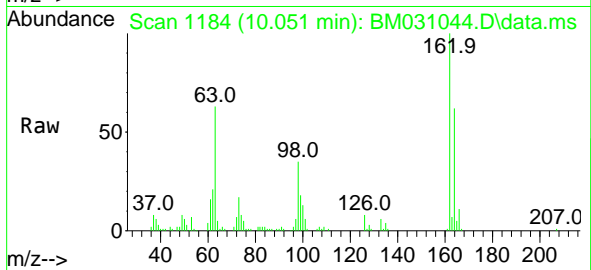
Tgt Ion: 93 Resp: 71432
 Ion Ratio Lower Upper
 93 100
 95 33.7 26.2 39.2
 123 11.8 9.3 13.9





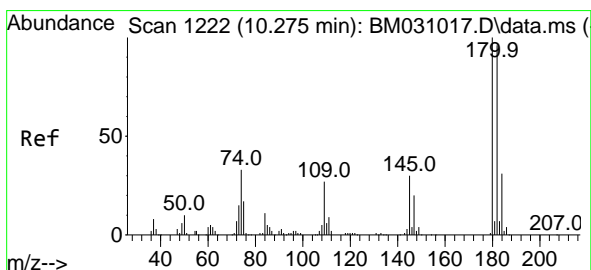
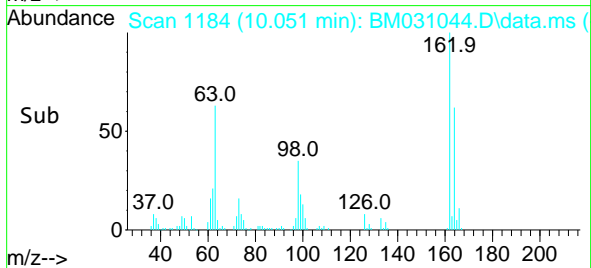
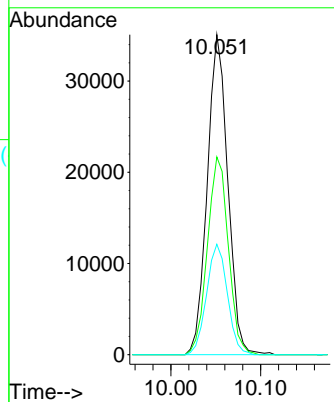
#29
 2,4-Dichlorophenol
 Concen: 7.589 ng
 RT: 10.051 min Scan# 1184
 Delta R.T. -0.006 min
 Lab File: BM031044.D
 Acq: 21 Jul 2021 14:30

Instrument :
 BNA_M
 ClientSampled :

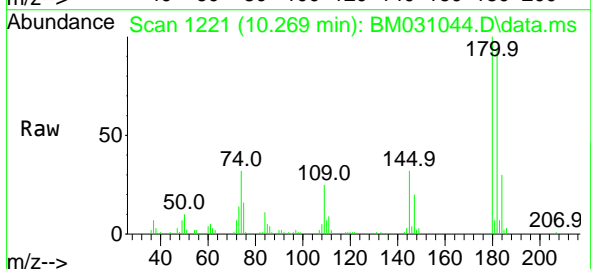


Tgt Ion:162 Resp: 55768

Ion	Ratio	Lower	Upper
162	100		
164	61.8	46.5	86.5
98	34.5	12.1	52.1

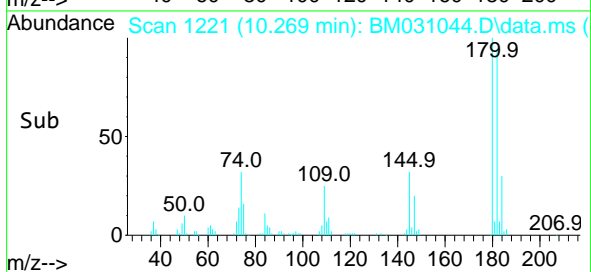
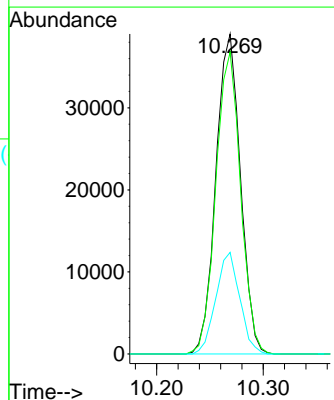


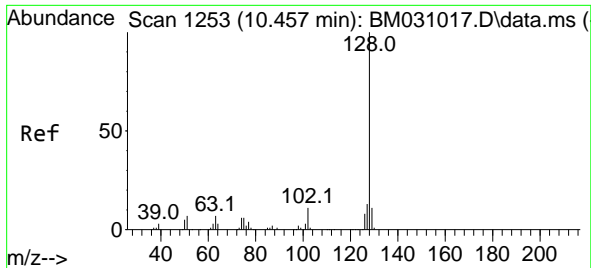
#30
 1,2,4-Trichlorobenzene
 Concen: 7.728 ng
 RT: 10.269 min Scan# 1221
 Delta R.T. -0.006 min
 Lab File: BM031044.D
 Acq: 21 Jul 2021 14:30



Tgt Ion:180 Resp: 62359

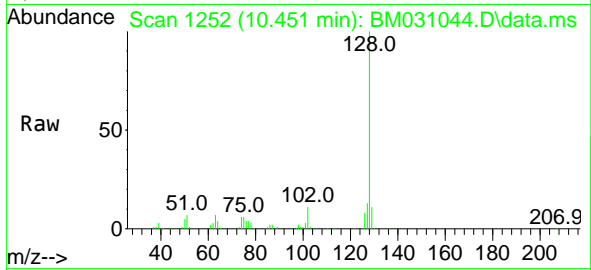
Ion	Ratio	Lower	Upper
180	100		
182	94.3	76.3	114.5
145	31.8	22.3	33.5



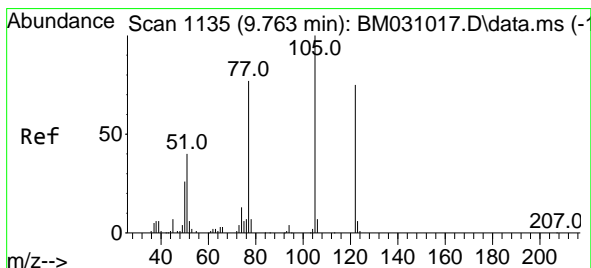
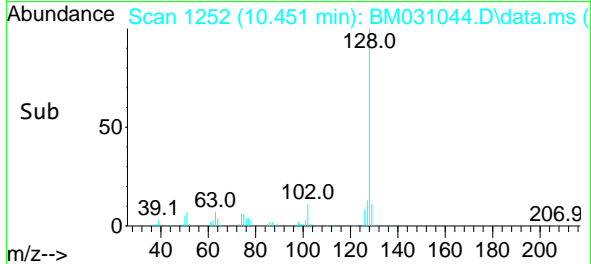
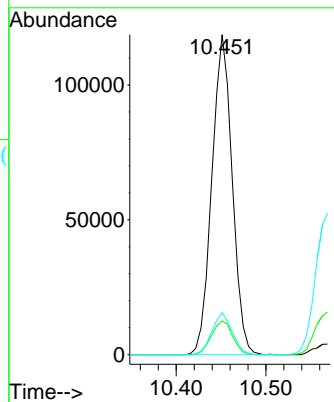


#31
 Naphthalene
 Concen: 7.782 ng
 RT: 10.451 min Scan# 1252
 Delta R.T. -0.006 min
 Lab File: BM031044.D
 Acq: 21 Jul 2021 14:30

Instrument :
 BNA_M
 ClientSampled :

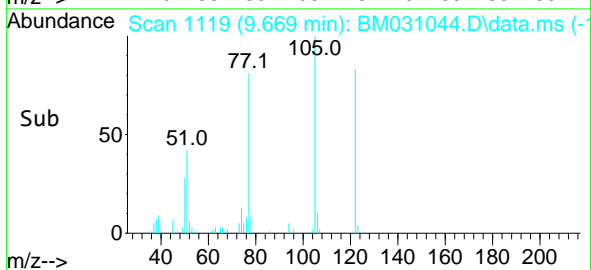
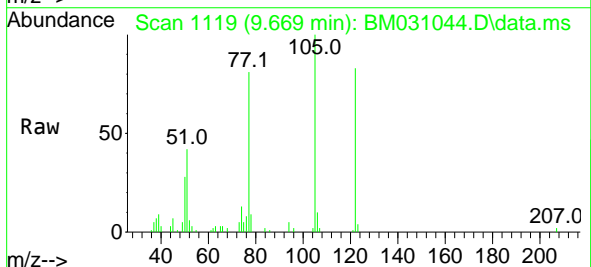
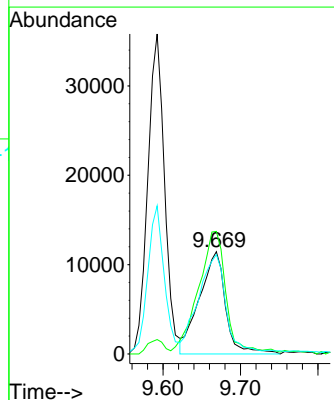


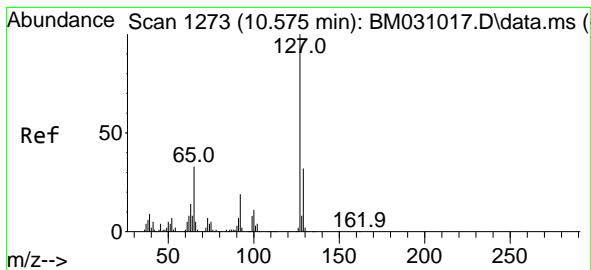
Tgt Ion:128 Resp: 186443
 Ion Ratio Lower Upper
 128 100
 129 10.6 9.0 13.6
 127 13.2 10.8 16.2



#32
 Benzoic acid
 Concen: 5.062 ng
 RT: 9.669 min Scan# 1119
 Delta R.T. -0.094 min
 Lab File: BM031044.D
 Acq: 21 Jul 2021 14:30

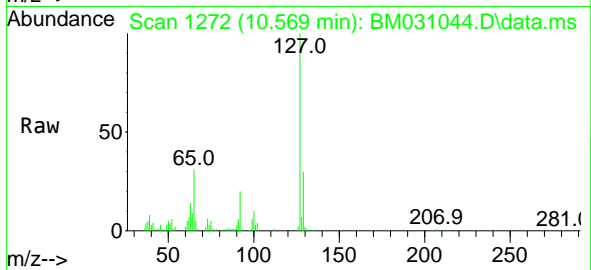
Tgt Ion:122 Resp: 26794
 Ion Ratio Lower Upper
 122 100
 105 119.9 107.3 147.3
 77 97.3 88.0 128.0





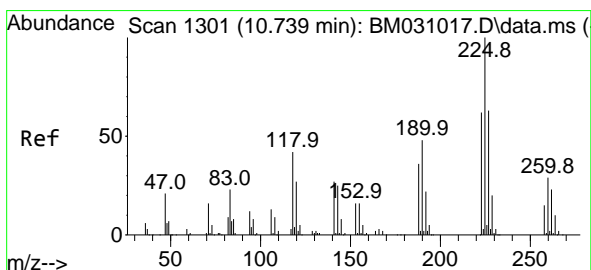
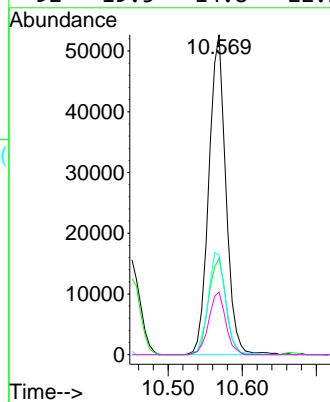
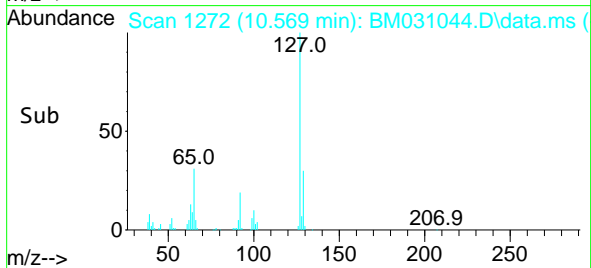
#33
 4-Chloroaniline
 Concen: 8.133 ng
 RT: 10.569 min Scan# 1272
 Delta R.T. -0.006 min
 Lab File: BM031044.D
 Acq: 21 Jul 2021 14:30

Instrument :
 BNA_M
 ClientSampled :

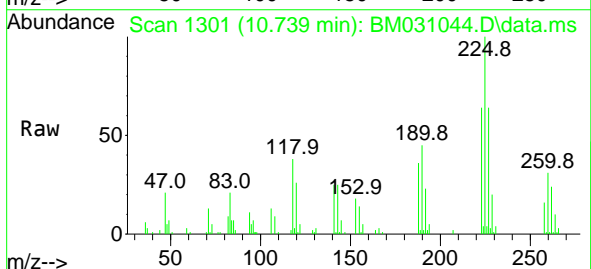


Tgt Ion:127 Resp: 84061

Ion	Ratio	Lower	Upper
127	100		
129	30.1	26.8	40.2
65	31.2	25.2	37.8
92	19.5	14.8	22.2

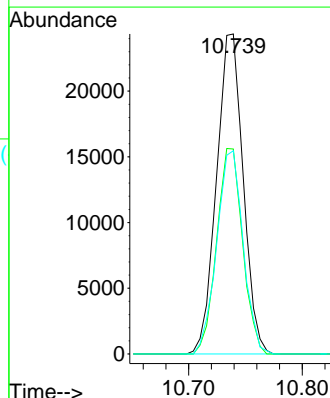
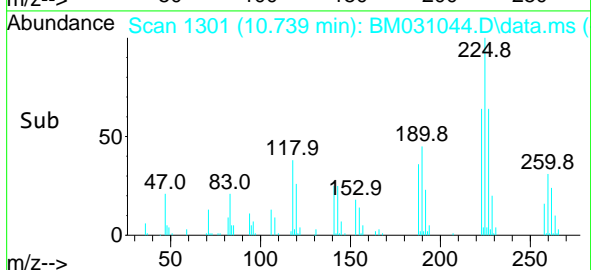


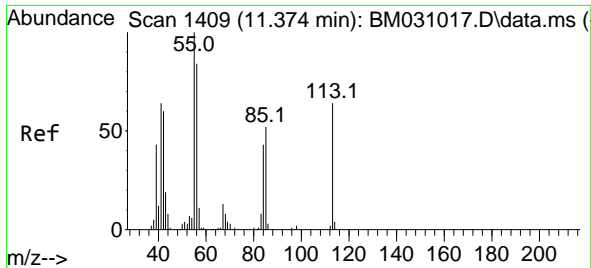
#34
 Hexachlorobutadiene
 Concen: 7.658 ng
 RT: 10.739 min Scan# 1301
 Delta R.T. 0.000 min
 Lab File: BM031044.D
 Acq: 21 Jul 2021 14:30



Tgt Ion:225 Resp: 39684

Ion	Ratio	Lower	Upper
225	100		
223	64.0	52.1	78.1
227	63.5	53.8	80.6

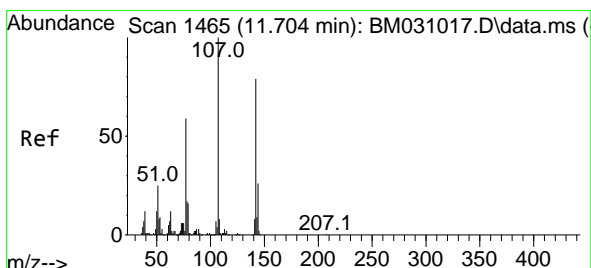
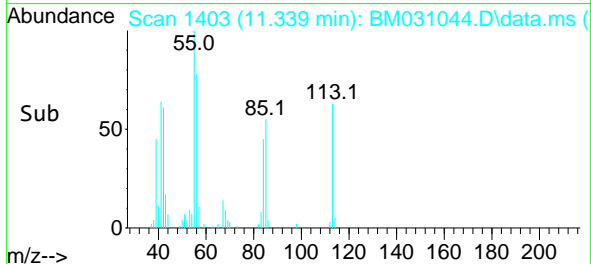
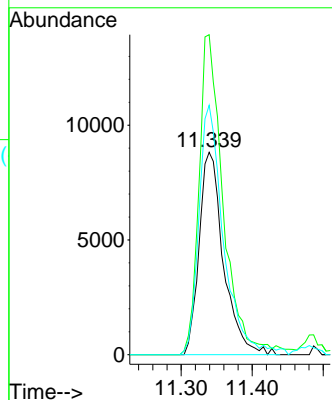
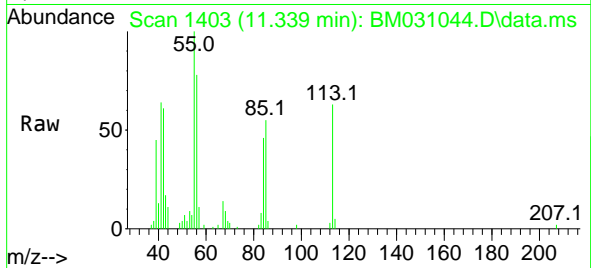




#35
 Caprolactam
 Concen: 8.503 ng
 RT: 11.339 min Scan# 1403
 Delta R.T. -0.035 min
 Lab File: BM031044.D
 Acq: 21 Jul 2021 14:30

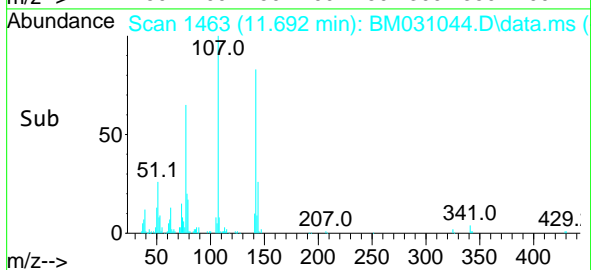
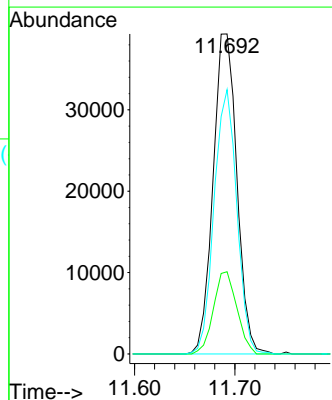
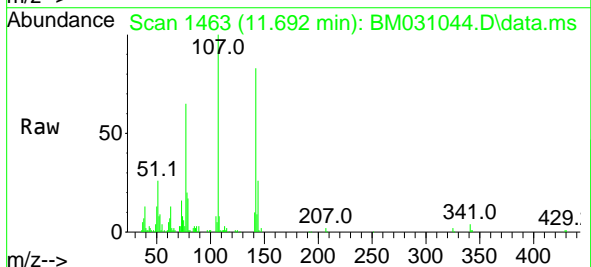
Instrument :
 BNA_M
 ClientSampled :

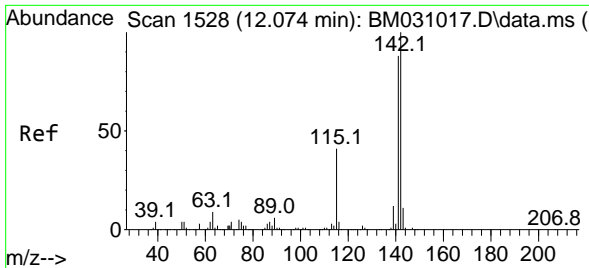
Tgt Ion:113 Resp: 21005
 Ion Ratio Lower Upper
 113 100
 55 158.1 132.0 172.0
 56 123.2 96.3 136.3



#36
 4-Chloro-3-methylphenol
 Concen: 7.729 ng
 RT: 11.692 min Scan# 1463
 Delta R.T. -0.012 min
 Lab File: BM031044.D
 Acq: 21 Jul 2021 14:30

Tgt Ion:107 Resp: 64814
 Ion Ratio Lower Upper
 107 100
 144 25.7 22.3 33.5
 142 82.6 69.3 103.9



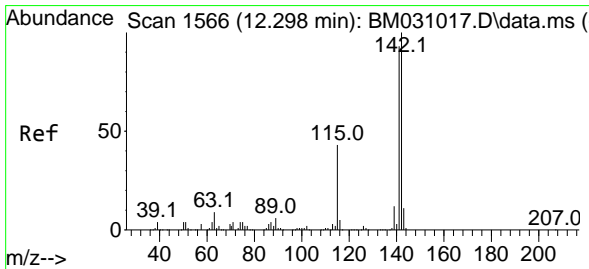
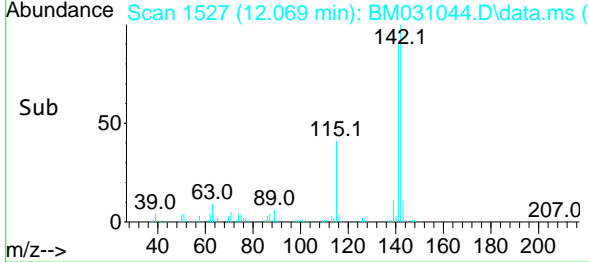
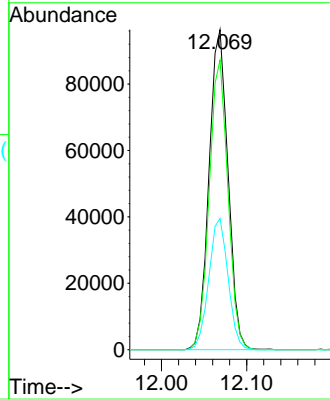
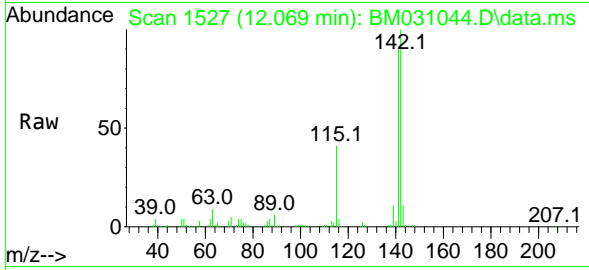


#37
 2-Methylnaphthalene
 Concen: 8.064 ng
 RT: 12.069 min Scan# 1527
 Delta R.T. -0.006 min
 Lab File: BM031044.D
 Acq: 21 Jul 2021 14:30

Instrument :
 BNA_M
 ClientSampled :

Tgt Ion:142 Resp: 148933

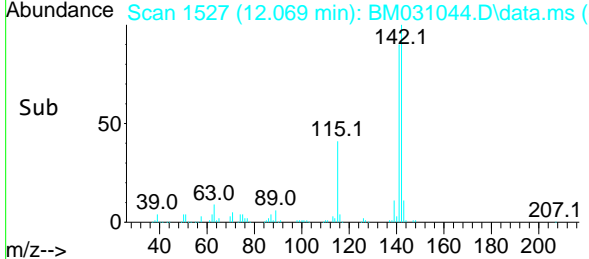
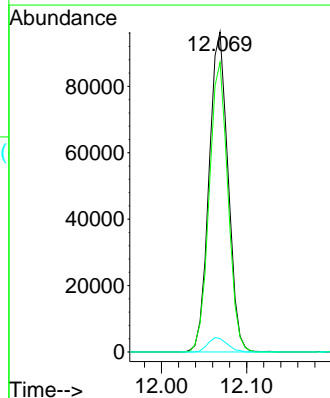
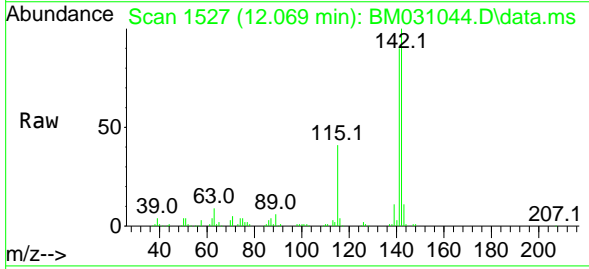
Ion	Ratio	Lower	Upper
142	100		
141	90.5	71.7	107.5
115	41.0	29.1	43.7

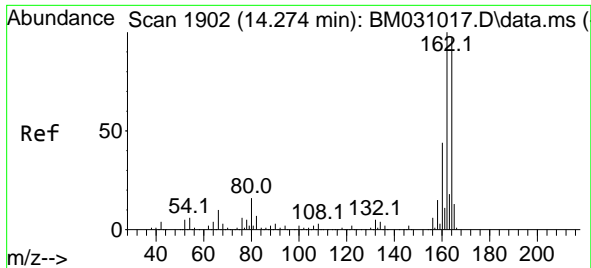


#38
 1-Methylnaphthalene
 Concen: 8.469 ng
 RT: 12.069 min Scan# 1527
 Delta R.T. -0.229 min
 Lab File: BM031044.D
 Acq: 21 Jul 2021 14:30

Tgt Ion:142 Resp: 148933

Ion	Ratio	Lower	Upper
142	100		
141	90.5	74.2	111.4
116	4.2	3.0	4.6



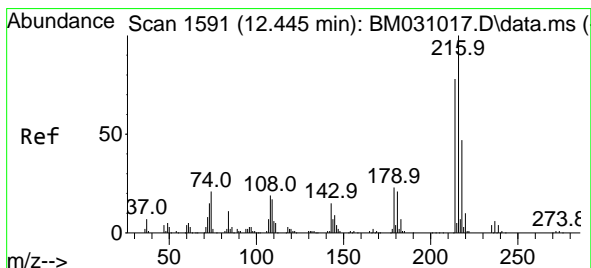
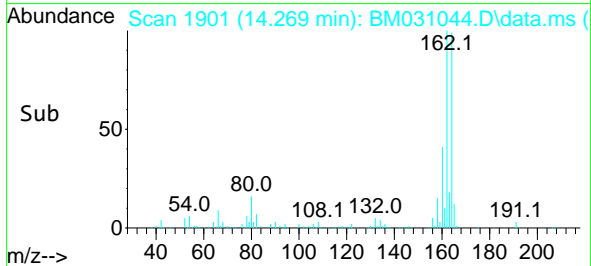
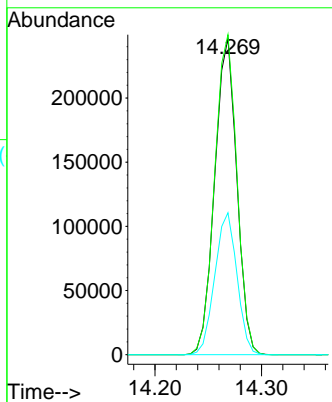
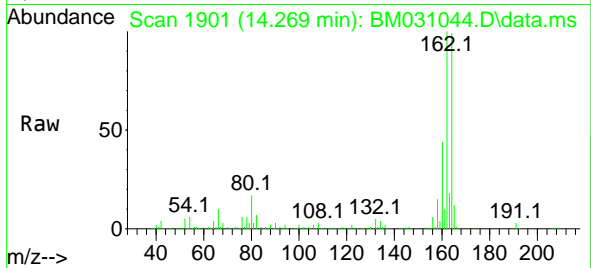


#39
 Acenaphthene-d10
 Concen: 20.000 ng
 RT: 14.269 min Scan# 1901
 Delta R.T. -0.006 min
 Lab File: BM031044.D
 Acq: 21 Jul 2021 14:30

Instrument :
 BNA_M
 ClientSampled :

Tgt Ion:164 Resp: 354824

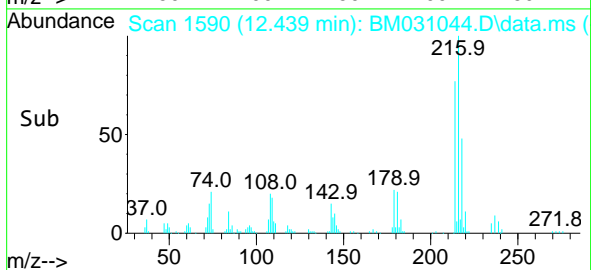
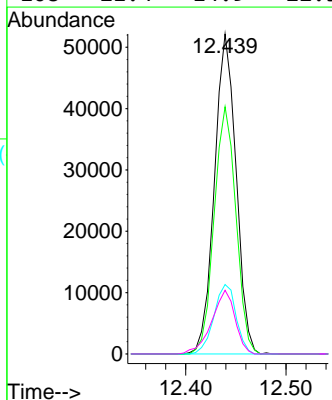
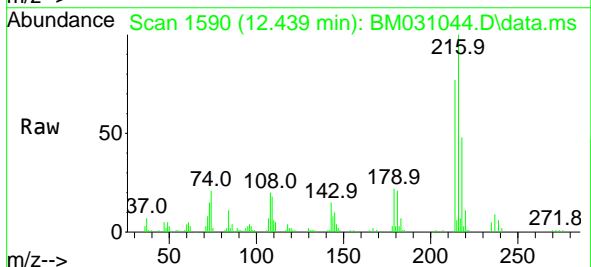
Ion	Ratio	Lower	Upper
164	100		
162	101.2	83.4	125.0
160	44.8	37.2	55.8

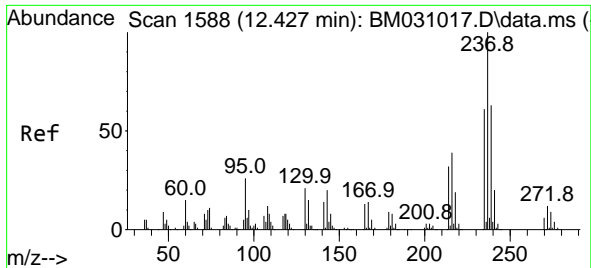


#40
 1,2,4,5-Tetrachlorobenzene
 Concen: 7.907 ng
 RT: 12.439 min Scan# 1590
 Delta R.T. -0.006 min
 Lab File: BM031044.D
 Acq: 21 Jul 2021 14:30

Tgt Ion:216 Resp: 78163

Ion	Ratio	Lower	Upper
216	100		
214	77.6	63.0	94.4
179	22.2	17.6	26.4
108	21.4	14.9	22.3

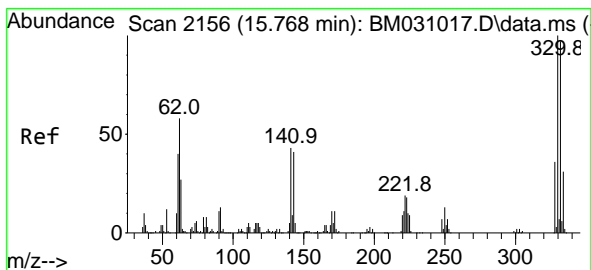
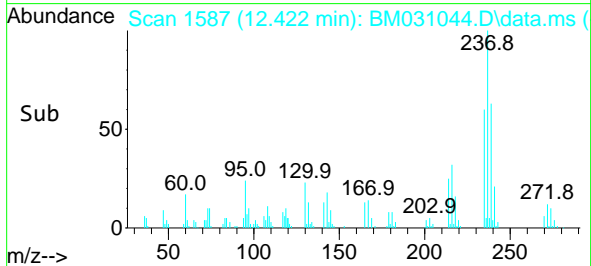
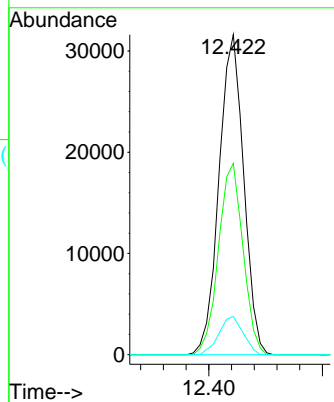
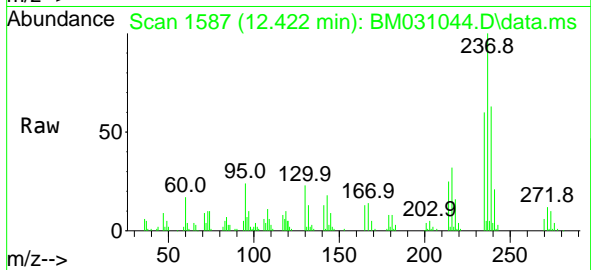




#41
 Hexachlorocyclopentadiene
 Concen: 8.665 ng
 RT: 12.422 min Scan# 1587
 Delta R.T. -0.006 min
 Lab File: BM031044.D
 Acq: 21 Jul 2021 14:30

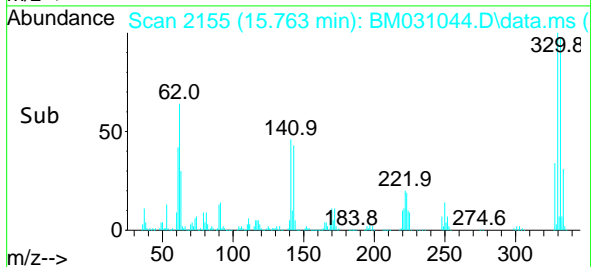
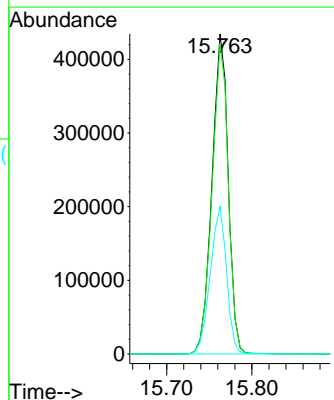
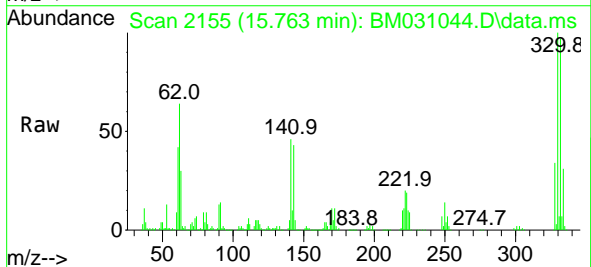
Instrument :
 BNA_M
 ClientSampled :

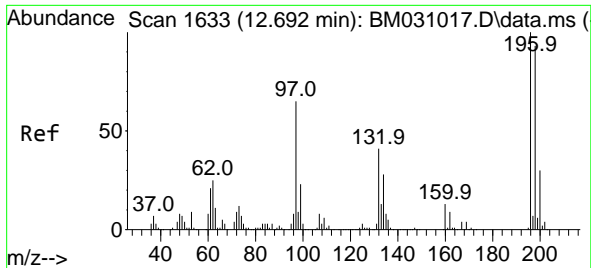
Tgt Ion	Resp	Lower	Upper
237	100		
235	59.8	42.4	82.4
272	11.9	0.0	31.7



#42
 2,4,6-Tribromophenol
 Concen: 124.249 ng
 RT: 15.763 min Scan# 2155
 Delta R.T. -0.006 min
 Lab File: BM031044.D
 Acq: 21 Jul 2021 14:30

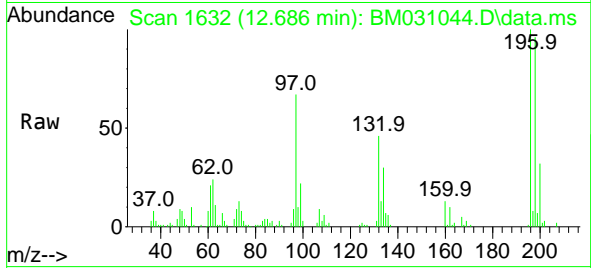
Tgt Ion	Resp	Lower	Upper
330	100		
332	96.8	77.0	115.4
141	46.5	30.2	45.2#



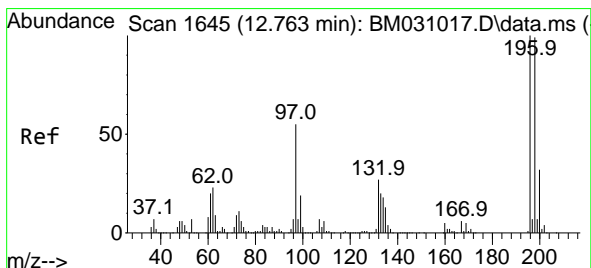
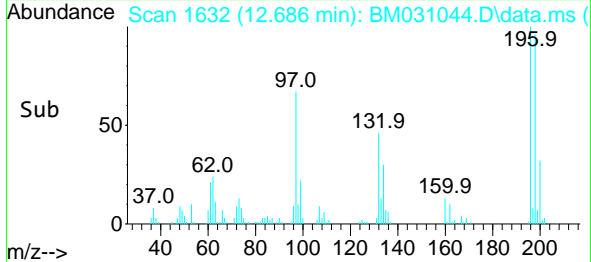
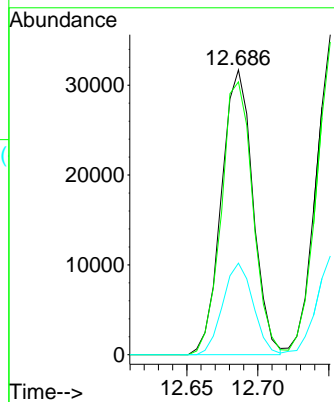


#43
 2,4,6-Trichlorophenol
 Concen: 7.049 ng
 RT: 12.686 min Scan# 1632
 Delta R.T. -0.006 min
 Lab File: BM031044.D
 Acq: 21 Jul 2021 14:30

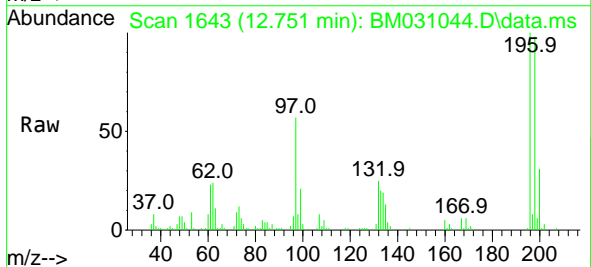
Instrument :
 BNA_M
 ClientSampled :



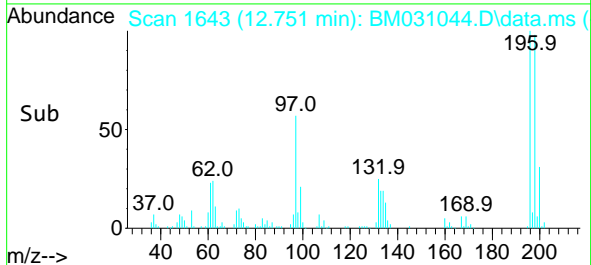
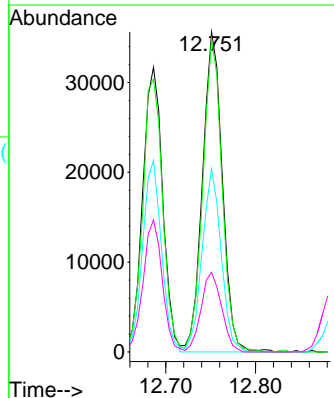
Tgt Ion:196 Resp: 48952
 Ion Ratio Lower Upper
 196 100
 198 95.8 77.6 116.4
 200 32.1 24.6 37.0

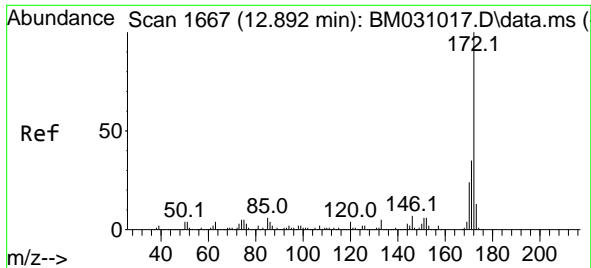


#44
 2,4,5-Trichlorophenol
 Concen: 7.114 ng
 RT: 12.751 min Scan# 1643
 Delta R.T. -0.012 min
 Lab File: BM031044.D
 Acq: 21 Jul 2021 14:30



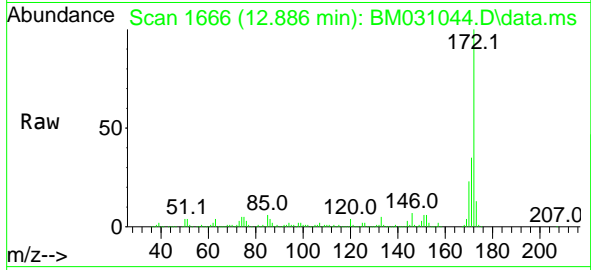
Tgt Ion:196 Resp: 54694
 Ion Ratio Lower Upper
 196 100
 198 97.8 77.0 115.4
 97 57.3 36.6 55.0#
 132 24.9 18.2 27.2





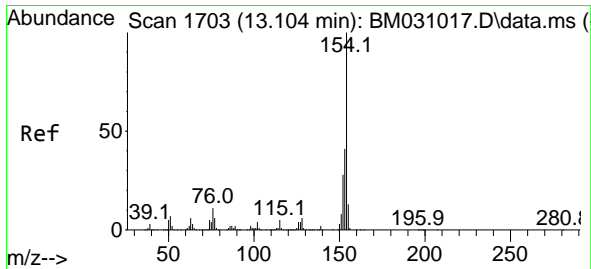
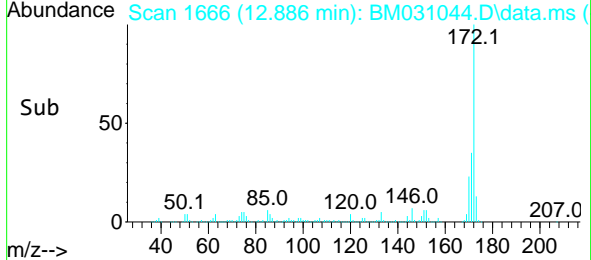
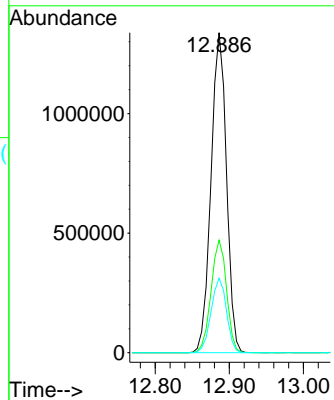
#45
 2-Fluorobiphenyl
 Concen: 81.471 ng
 RT: 12.886 min Scan# 1666
 Delta R.T. -0.006 min
 Lab File: BM031044.D
 Acq: 21 Jul 2021 14:30

Instrument :
 BNA_M
 ClientSampled :



Tgt Ion:172 Resp: 1937441

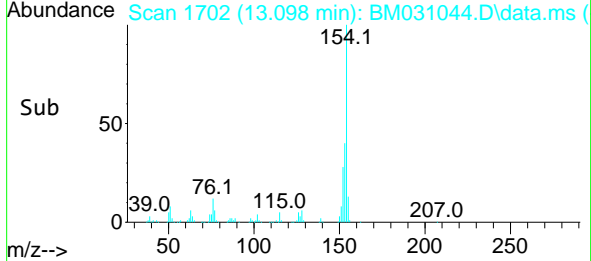
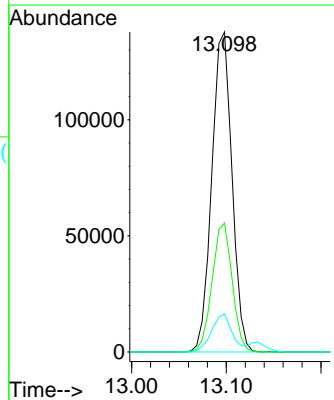
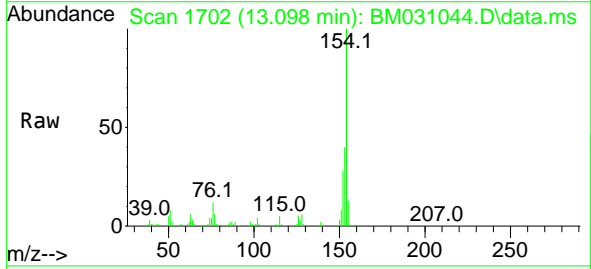
Ion	Ratio	Lower	Upper
172	100		
171	35.2	28.6	43.0
170	23.3	18.4	27.6

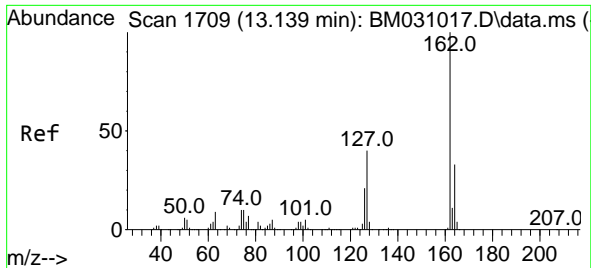


#46
 1,1'-Biphenyl
 Concen: 8.101 ng
 RT: 13.098 min Scan# 1702
 Delta R.T. -0.006 min
 Lab File: BM031044.D
 Acq: 21 Jul 2021 14:30

Tgt Ion:154 Resp: 203811

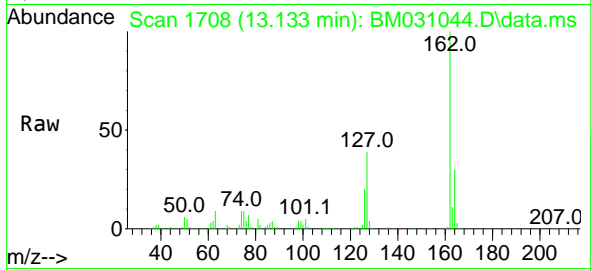
Ion	Ratio	Lower	Upper
154	100		
153	40.3	20.7	60.7
76	11.9	0.0	31.0



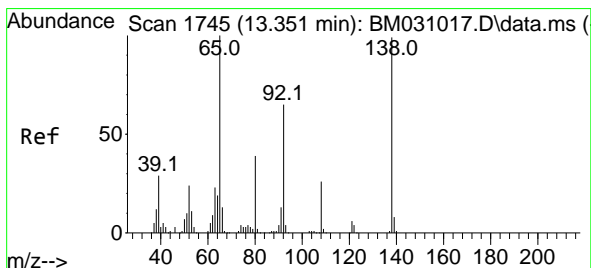
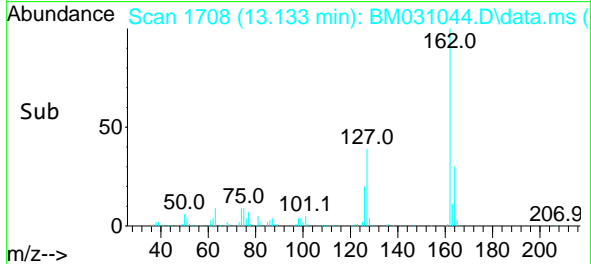
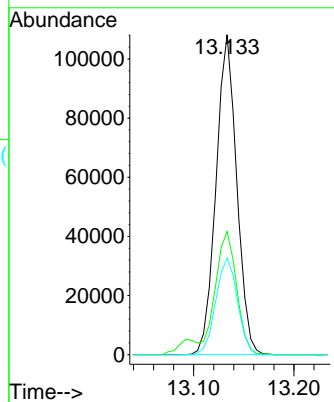


#47
 2-Chloronaphthalene
 Concen: 7.844 ng
 RT: 13.133 min Scan# 1708
 Delta R.T. -0.006 min
 Lab File: BM031044.D
 Acq: 21 Jul 2021 14:30

Instrument :
 BNA_M
 ClientSampled :

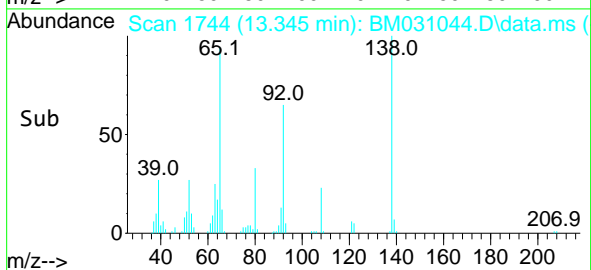
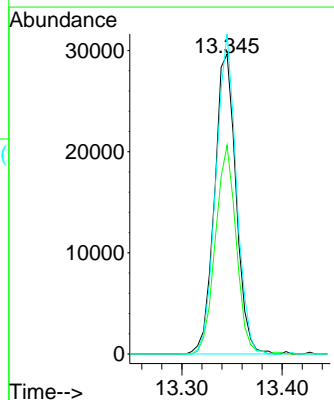
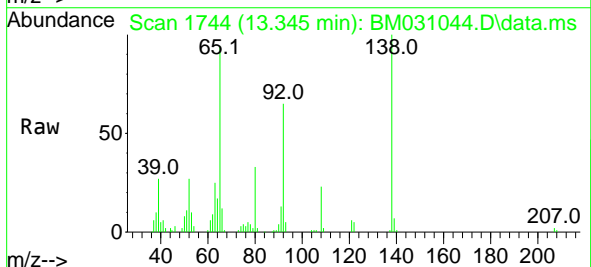


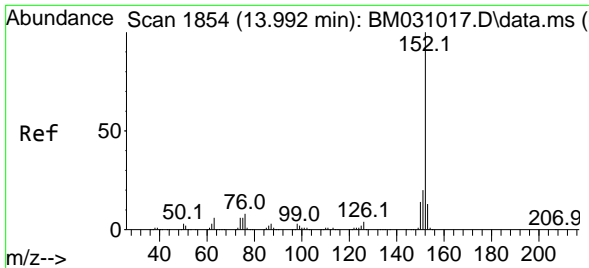
Tgt Ion:162 Resp: 154572
 Ion Ratio Lower Upper
 162 100
 127 38.5 27.1 40.7
 164 30.1 26.1 39.1



#48
 2-Nitroaniline
 Concen: 7.034 ng
 RT: 13.345 min Scan# 1744
 Delta R.T. -0.006 min
 Lab File: BM031044.D
 Acq: 21 Jul 2021 14:30

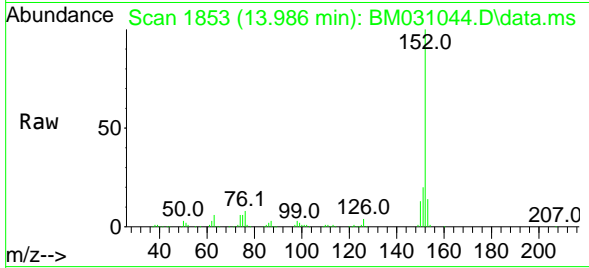
Tgt Ion: 65 Resp: 44170
 Ion Ratio Lower Upper
 65 100
 92 69.6 55.5 83.3
 138 106.7 85.7 128.5





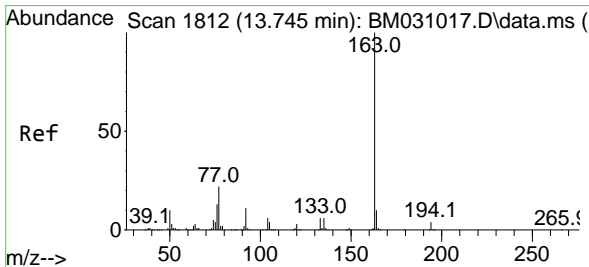
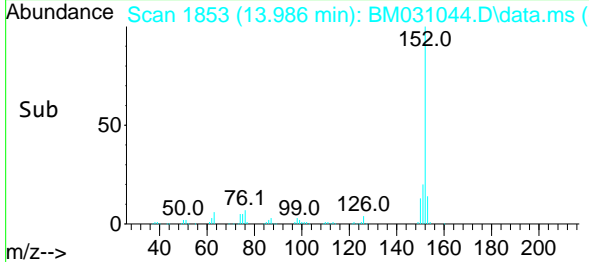
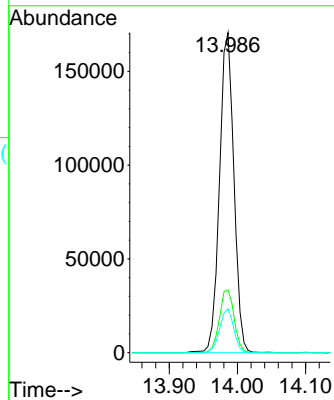
#49
 Acenaphthylene
 Concen: 7.960 ng
 RT: 13.986 min Scan# 1853
 Delta R.T. -0.006 min
 Lab File: BM031044.D
 Acq: 21 Jul 2021 14:30

Instrument :
 BNA_M
 ClientSampled :



Tgt Ion:152 Resp: 250734

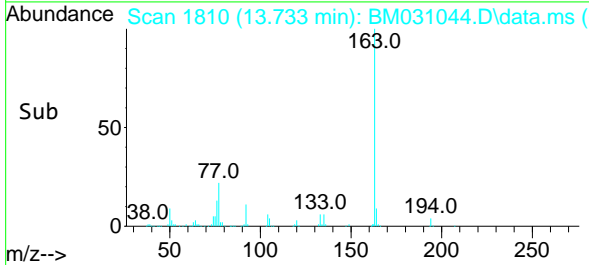
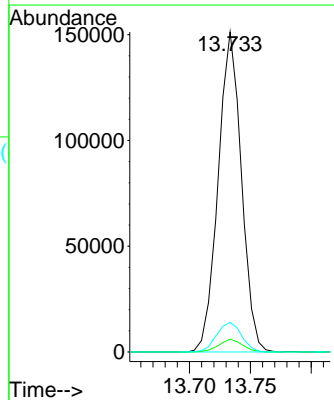
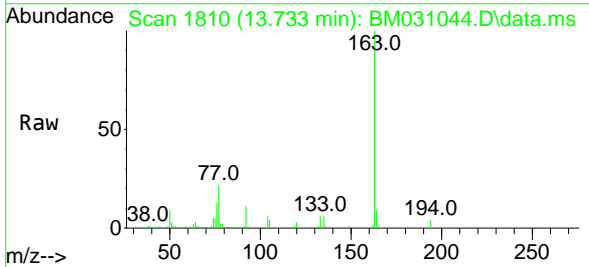
Ion	Ratio	Lower	Upper
152	100		
151	19.6	16.3	24.5
153	13.6	10.2	15.4

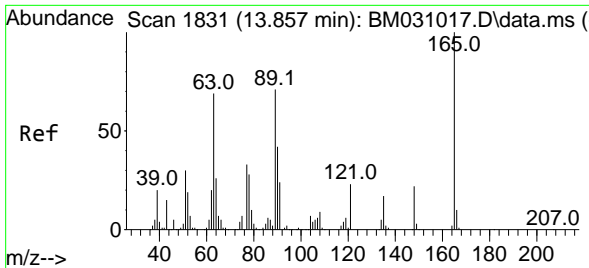


#50
 Dimethylphthalate
 Concen: 7.555 ng
 RT: 13.733 min Scan# 1810
 Delta R.T. -0.012 min
 Lab File: BM031044.D
 Acq: 21 Jul 2021 14:30

Tgt Ion:163 Resp: 201078

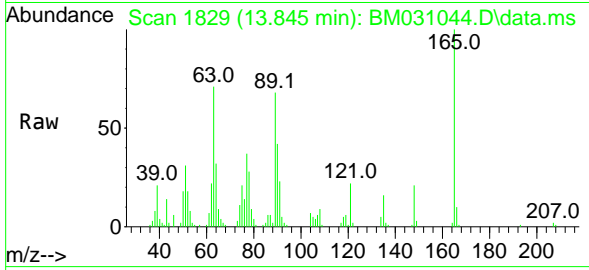
Ion	Ratio	Lower	Upper
163	100		
194	4.0	3.3	4.9
164	9.3	7.9	11.9



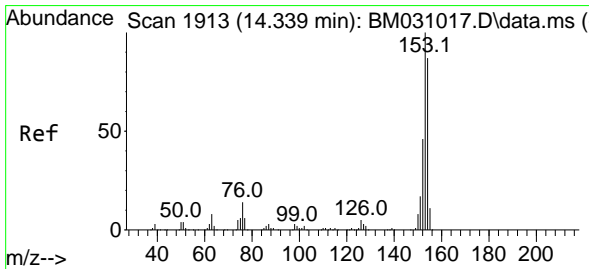
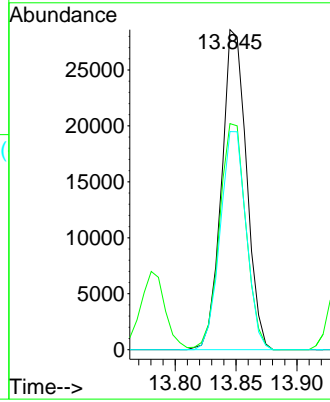
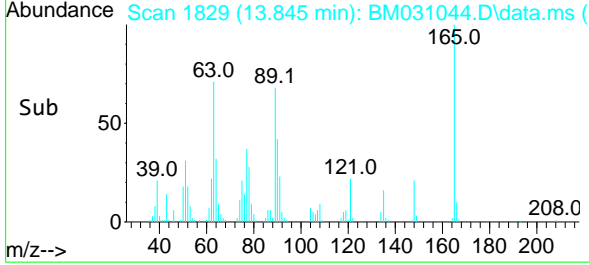


#51
 2,6-Dinitrotoluene
 Concen: 6.832 ng
 RT: 13.845 min Scan# 1829
 Delta R.T. -0.012 min
 Lab File: BM031044.D
 Acq: 21 Jul 2021 14:30

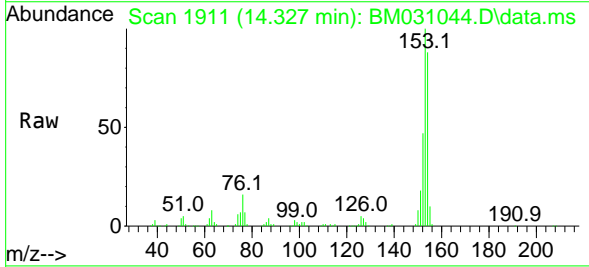
Instrument :
 BNA_M
 ClientSampled :



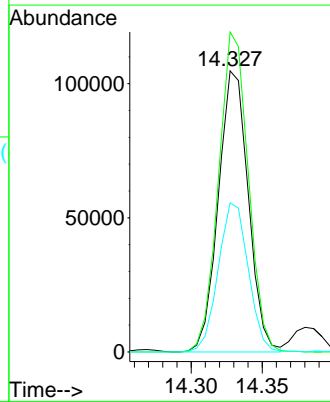
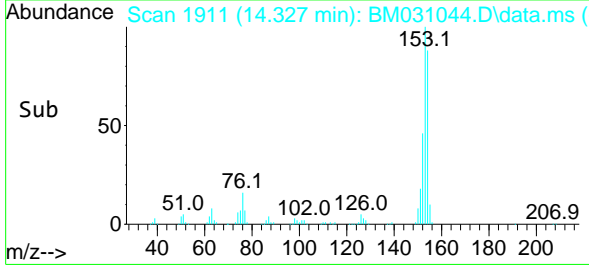
Tgt Ion:165 Resp: 40729
 Ion Ratio Lower Upper
 165 100
 63 70.7 45.3 67.9#
 89 68.2 46.3 69.5

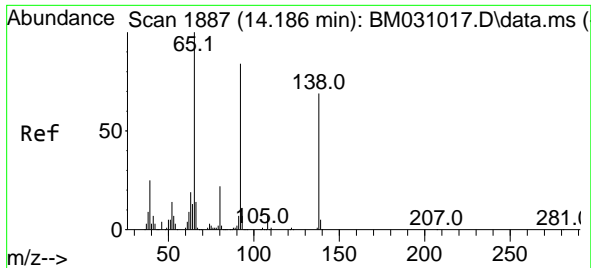


#52
 Acenaphthene
 Concen: 7.763 ng
 RT: 14.327 min Scan# 1911
 Delta R.T. -0.012 min
 Lab File: BM031044.D
 Acq: 21 Jul 2021 14:30



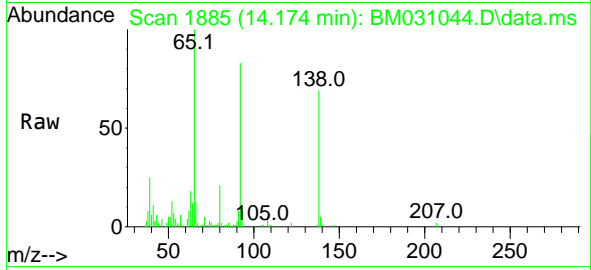
Tgt Ion:154 Resp: 153874
 Ion Ratio Lower Upper
 154 100
 153 113.8 92.2 138.2
 152 53.0 43.4 65.2



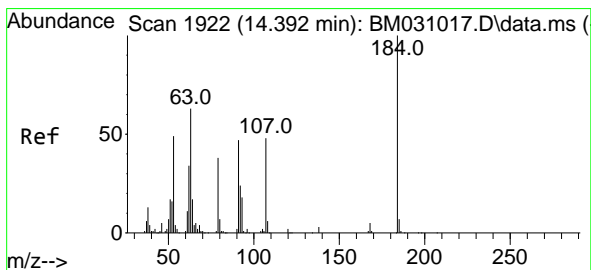
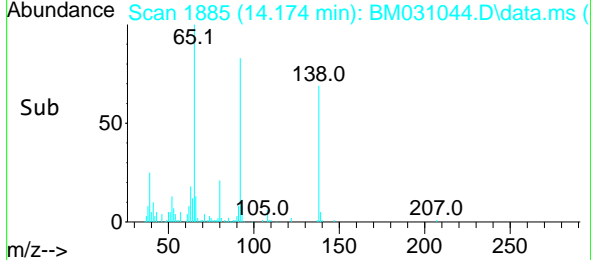
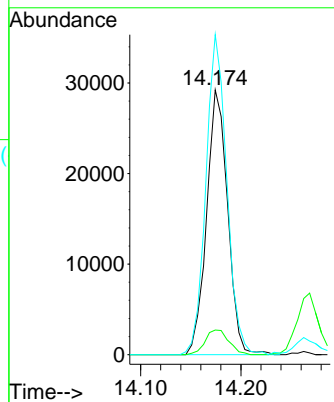


#53
 3-Nitroaniline
 Concen: 7.092 ng
 RT: 14.174 min Scan# 1885
 Delta R.T. -0.012 min
 Lab File: BM031044.D
 Acq: 21 Jul 2021 14:30

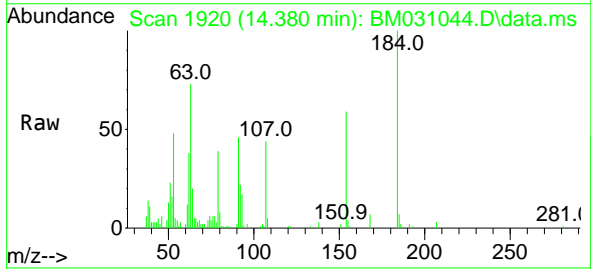
Instrument :
 BNA_M
 ClientSampled :



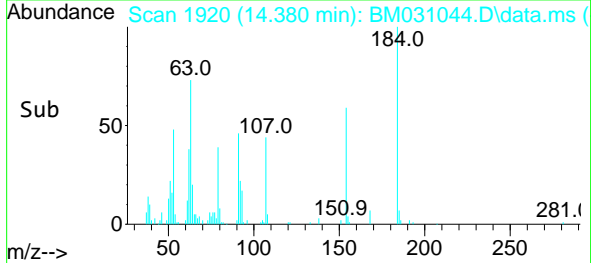
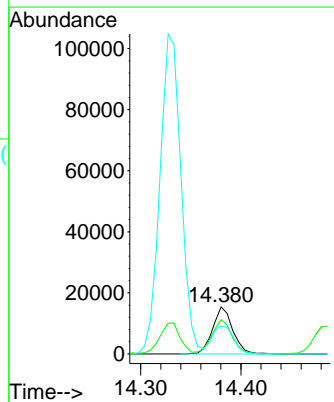
Tgt Ion:138 Resp: 42712
 Ion Ratio Lower Upper
 138 100
 108 9.3 7.7 11.5
 92 120.8 92.6 138.8

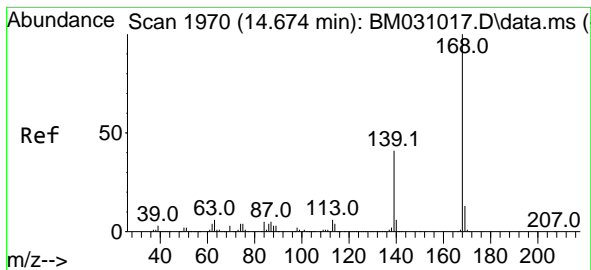


#54
 2,4-Dinitrophenol
 Concen: 6.096 ng
 RT: 14.380 min Scan# 1920
 Delta R.T. -0.012 min
 Lab File: BM031044.D
 Acq: 21 Jul 2021 14:30



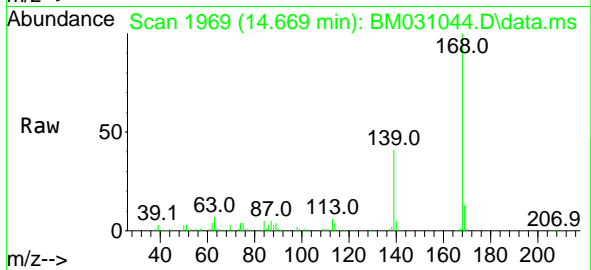
Tgt Ion:184 Resp: 21434
 Ion Ratio Lower Upper
 184 100
 63 72.8 54.2 81.2
 154 59.4 56.1 84.1



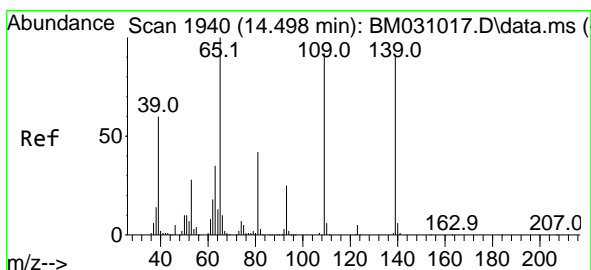
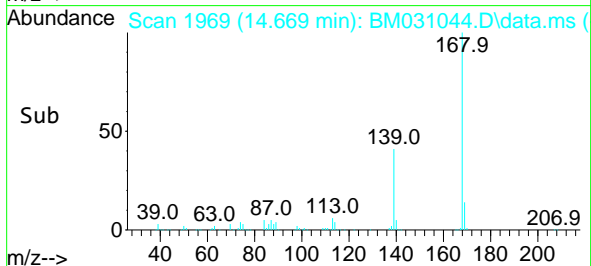
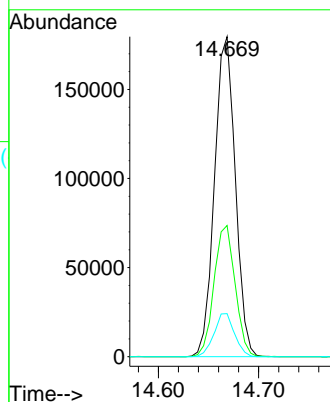


#55
 Dibenzofuran
 Concen: 7.951 ng
 RT: 14.669 min Scan# 1969
 Delta R.T. -0.006 min
 Lab File: BM031044.D
 Acq: 21 Jul 2021 14:30

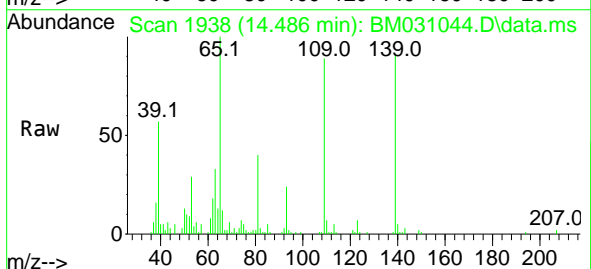
Instrument :
 BNA_M
 ClientSampled :



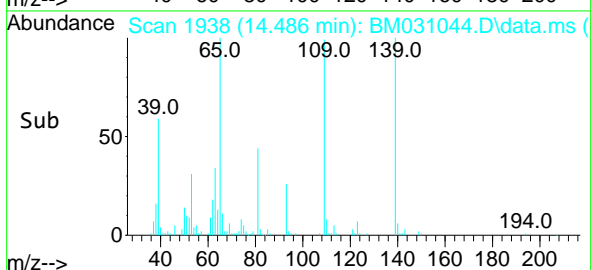
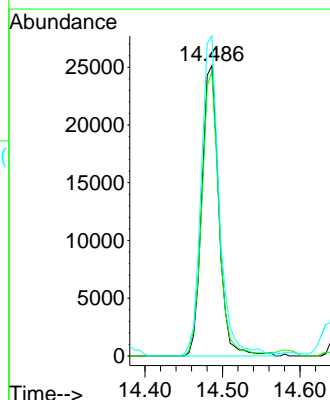
Tgt Ion:168 Resp: 258464
 Ion Ratio Lower Upper
 168 100
 139 41.0 29.4 44.0
 169 13.5 10.8 16.2

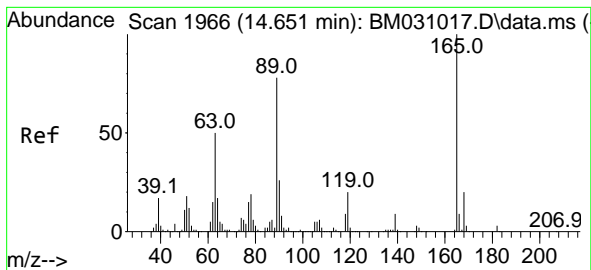


#56
 4-Nitrophenol
 Concen: 7.188 ng
 RT: 14.486 min Scan# 1938
 Delta R.T. -0.012 min
 Lab File: BM031044.D
 Acq: 21 Jul 2021 14:30



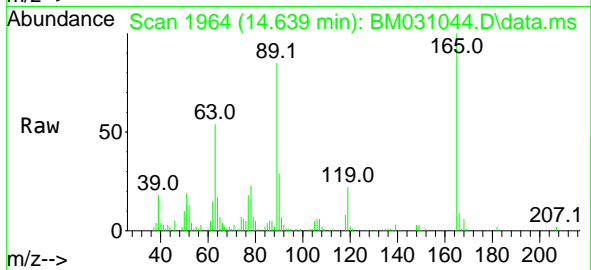
Tgt Ion:139 Resp: 38285
 Ion Ratio Lower Upper
 139 100
 109 97.9 64.5 104.5
 65 110.2 78.9 118.9





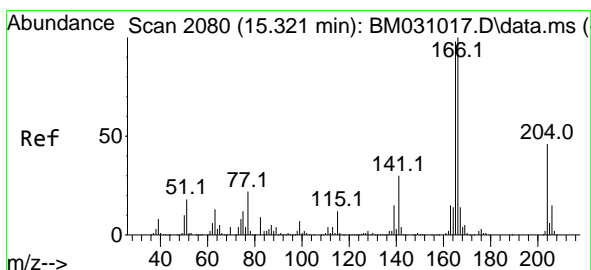
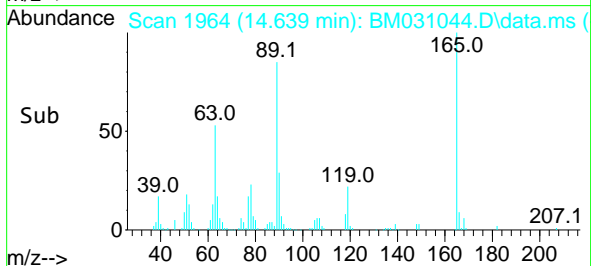
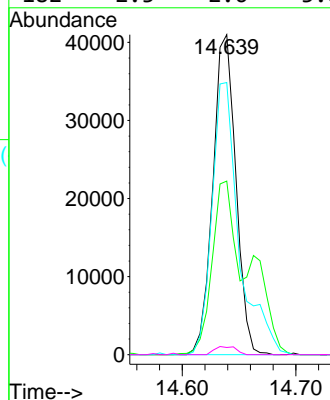
#57
 2,4-Dinitrotoluene
 Concen: 6.951 ng
 RT: 14.639 min Scan# 1964
 Delta R.T. -0.012 min
 Lab File: BM031044.D
 Acq: 21 Jul 2021 14:30

Instrument :
 BNA_M
 ClientSampled :

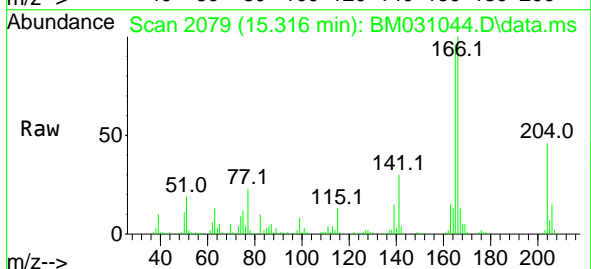


Tgt Ion:165 Resp: 57704

Ion	Ratio	Lower	Upper
165	100		
63	54.3	35.0	52.4#
89	85.0	55.2	82.8#
182	2.3	2.6	3.8#

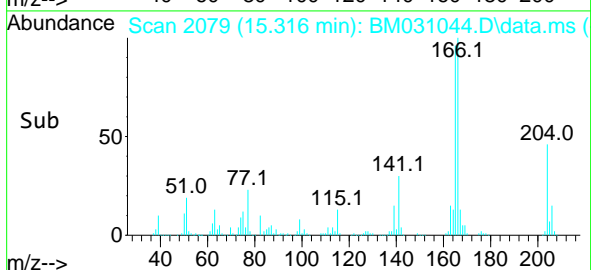
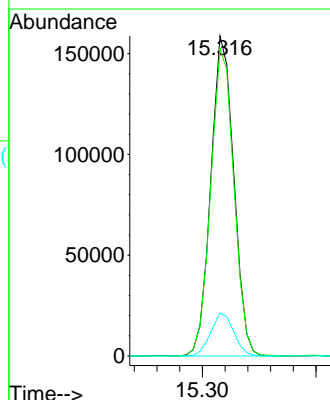


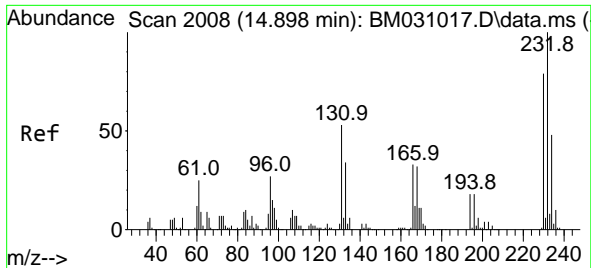
#58
 Fluorene
 Concen: 8.134 ng
 RT: 15.316 min Scan# 2079
 Delta R.T. -0.006 min
 Lab File: BM031044.D
 Acq: 21 Jul 2021 14:30



Tgt Ion:166 Resp: 223070

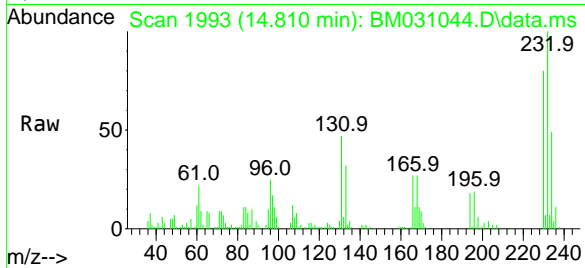
Ion	Ratio	Lower	Upper
166	100		
165	96.0	79.0	118.6
167	13.4	10.8	16.2



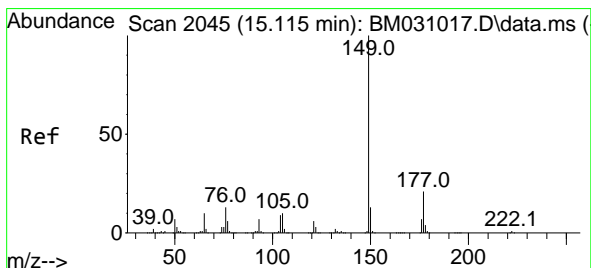
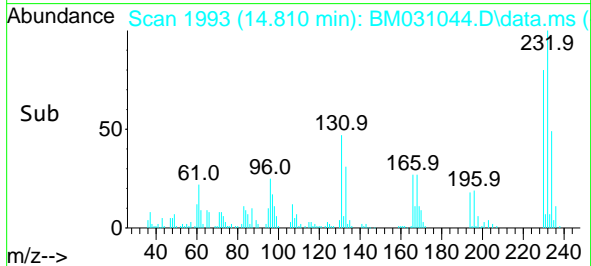
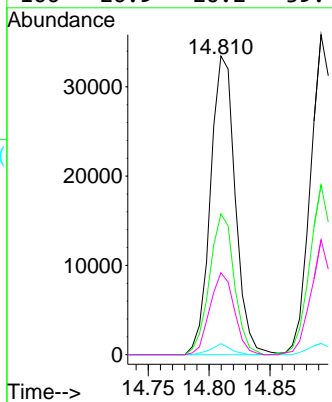


#59
 2,3,4,6-Tetrachlorophenol
 Concen: 6.608 ng
 RT: 14.810 min Scan# 1993
 Delta R.T. -0.088 min
 Lab File: BM031044.D
 Acq: 21 Jul 2021 14:30

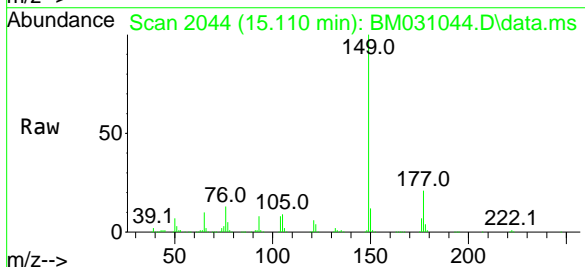
Instrument :
 BNA_M
 ClientSampled :



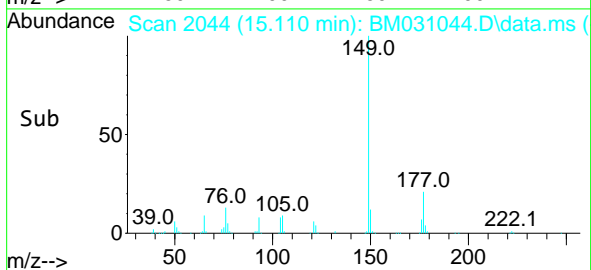
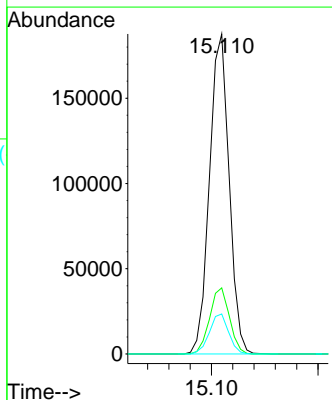
Tgt Ion:232 Resp: 47343
 Ion Ratio Lower Upper
 232 100
 131 47.0 34.4 51.6
 130 2.9 2.2 3.2
 166 26.9 26.2 39.4

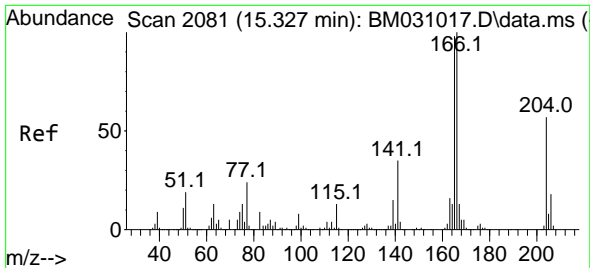


#60
 Diethylphthalate
 Concen: 8.402 ng
 RT: 15.110 min Scan# 2044
 Delta R.T. -0.006 min
 Lab File: BM031044.D
 Acq: 21 Jul 2021 14:30



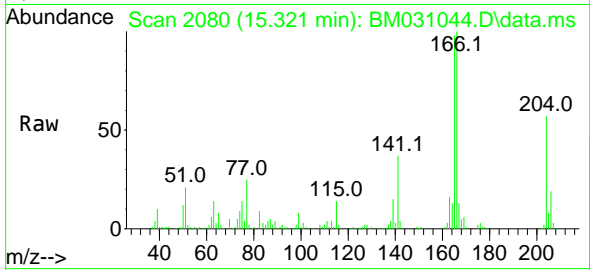
Tgt Ion:149 Resp: 239731
 Ion Ratio Lower Upper
 149 100
 177 20.6 17.9 26.9
 150 12.5 10.3 15.5



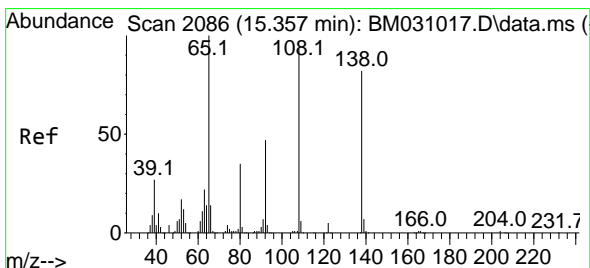
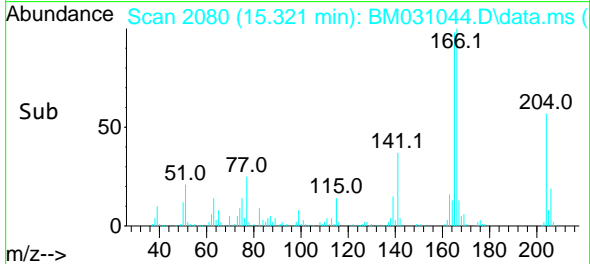
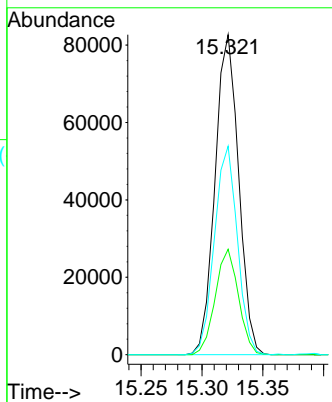


#61
 4-Chlorophenyl-phenylether
 Concen: 8.216 ng
 RT: 15.321 min Scan# 2080
 Delta R.T. -0.006 min
 Lab File: BM031044.D
 Acq: 21 Jul 2021 14:30

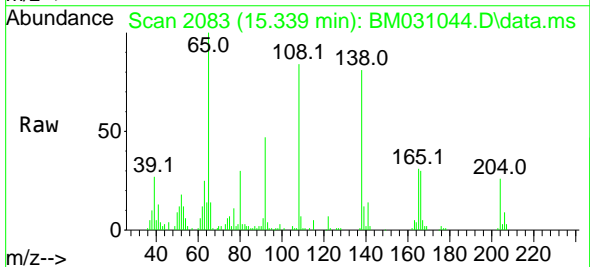
Instrument :
 BNA_M
 ClientSampled :



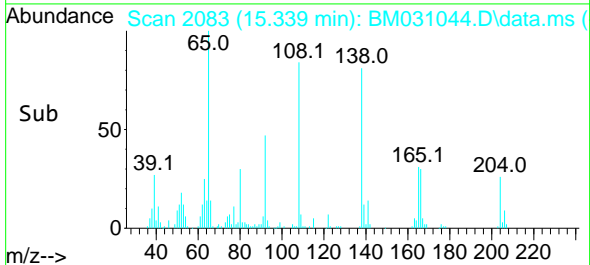
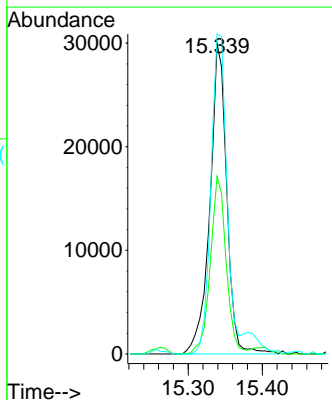
Tgt Ion:204 Resp: 111570
 Ion Ratio Lower Upper
 204 100
 206 32.9 25.5 38.3
 141 65.2 40.3 60.5#

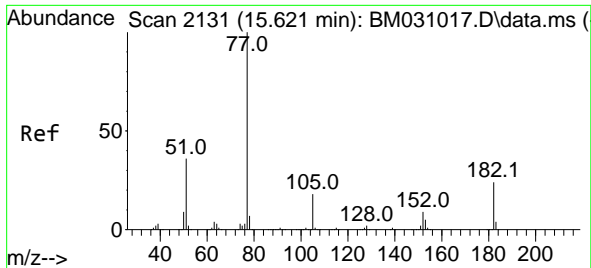


#62
 4-Nitroaniline
 Concen: 7.143 ng
 RT: 15.339 min Scan# 2083
 Delta R.T. -0.018 min
 Lab File: BM031044.D
 Acq: 21 Jul 2021 14:30



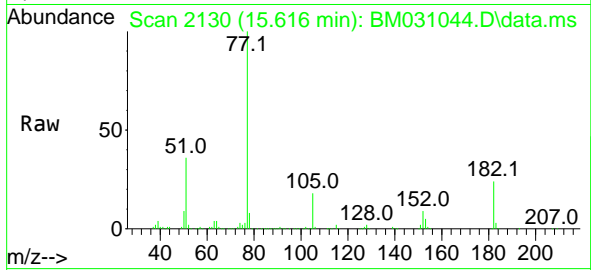
Tgt Ion:138 Resp: 47458
 Ion Ratio Lower Upper
 138 100
 92 57.2 33.4 73.4
 108 103.1 75.5 115.5





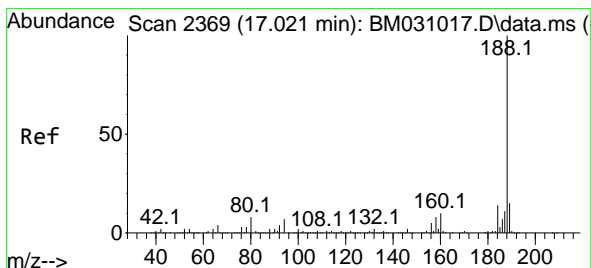
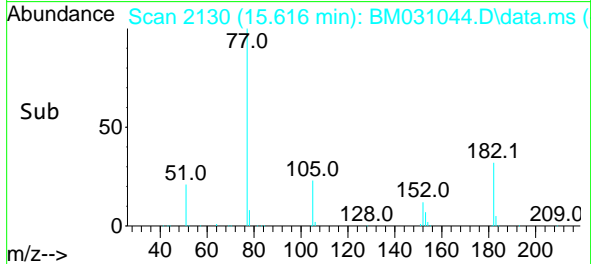
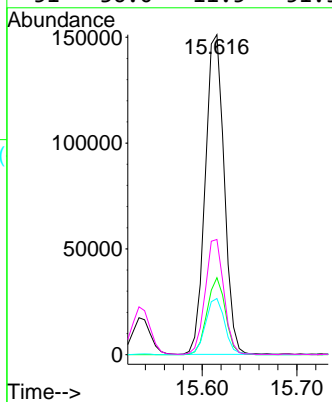
#63
 Azobenzene
 Concen: 7.373 ng
 RT: 15.616 min Scan# 2130
 Delta R.T. -0.006 min
 Lab File: BM031044.D
 Acq: 21 Jul 2021 14:30

Instrument :
 BNA_M
 ClientSampled :



Tgt Ion: 77 Resp: 209387

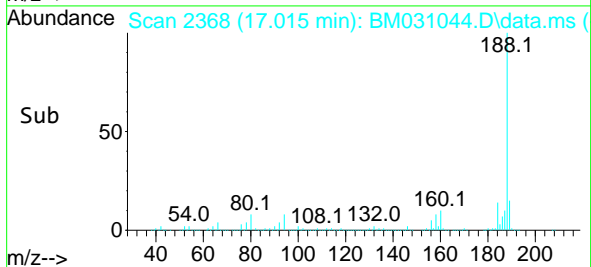
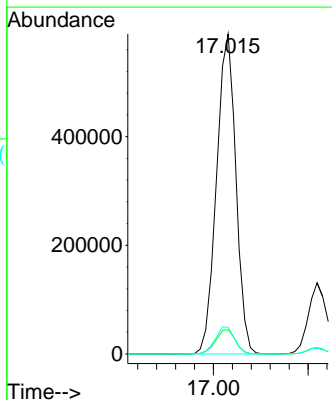
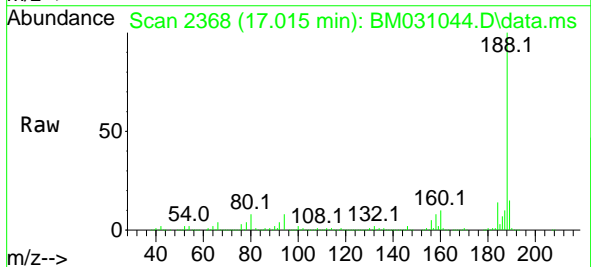
Ion	Ratio	Lower	Upper
77	100		
182	24.1	6.8	46.8
105	17.5	0.0	36.6
51	36.0	11.5	51.5

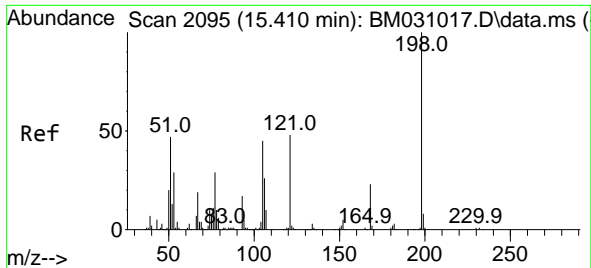


#64
 Phenanthrene-d10
 Concen: 20.000 ng
 RT: 17.015 min Scan# 2368
 Delta R.T. -0.006 min
 Lab File: BM031044.D
 Acq: 21 Jul 2021 14:30

Tgt Ion: 188 Resp: 836783

Ion	Ratio	Lower	Upper
188	100		
94	7.6	6.0	9.0
80	8.4	6.6	9.8

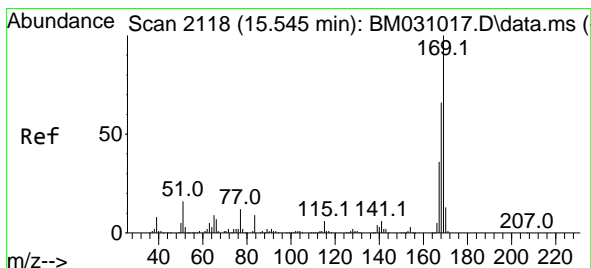
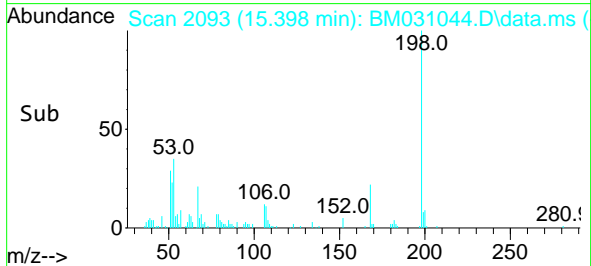
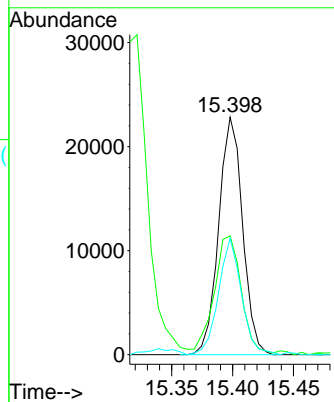
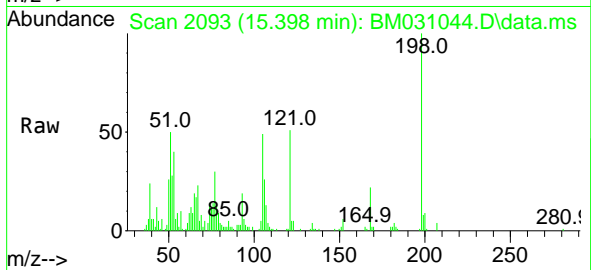




#65
 4,6-Dinitro-2-methylphenol
 Concen: 5.942 ng
 RT: 15.398 min Scan# 2093
 Delta R.T. -0.012 min
 Lab File: BM031044.D
 Acq: 21 Jul 2021 14:30

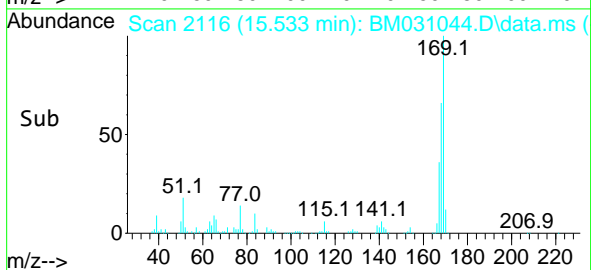
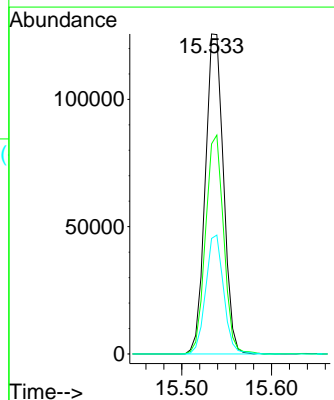
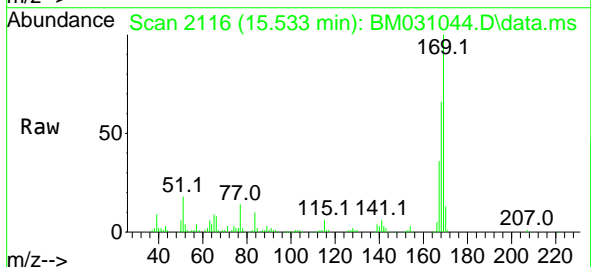
Instrument :
 BNA_M
 ClientSampled :

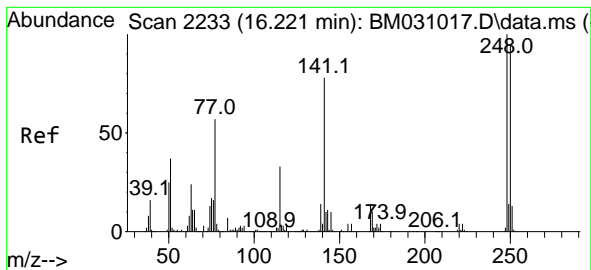
Tgt Ion:198 Resp: 31187
 Ion Ratio Lower Upper
 198 100
 51 50.1 18.9 58.9
 105 49.0 17.6 57.6



#66
 n-Nitrosodiphenylamine
 Concen: 7.180 ng
 RT: 15.533 min Scan# 2116
 Delta R.T. -0.012 min
 Lab File: BM031044.D
 Acq: 21 Jul 2021 14:30

Tgt Ion:169 Resp: 176604
 Ion Ratio Lower Upper
 169 100
 168 65.6 54.2 81.2
 167 36.1 29.0 43.6



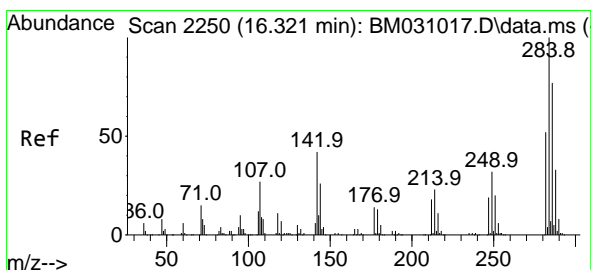
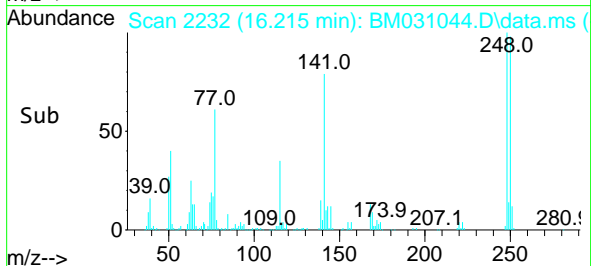
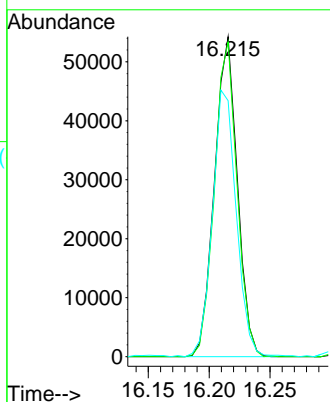
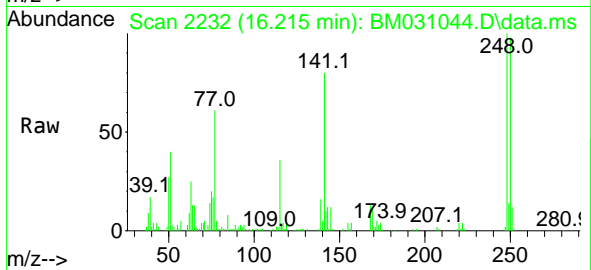


#67
 4-Bromophenyl-phenylether
 Concen: 8.196 ng
 RT: 16.215 min Scan# 2232
 Delta R.T. -0.006 min
 Lab File: BM031044.D
 Acq: 21 Jul 2021 14:30

Instrument :
 BNA_M
 ClientSampled :

Tgt Ion:248 Resp: 70963

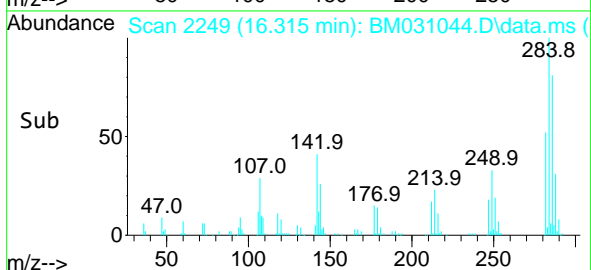
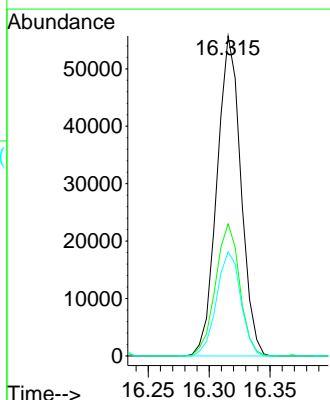
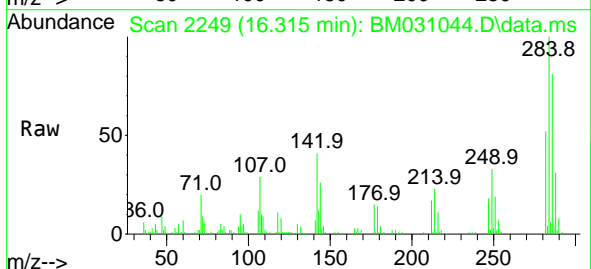
Ion	Ratio	Lower	Upper
248	100		
250	98.3	77.9	116.9
141	80.0	56.2	84.2

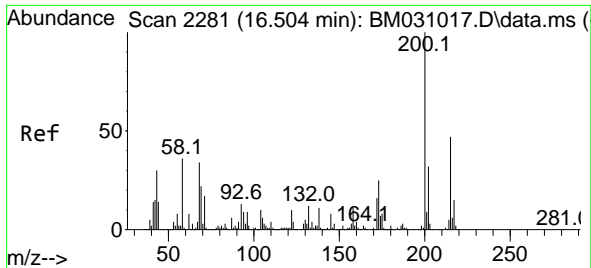


#68
 Hexachlorobenzene
 Concen: 7.790 ng
 RT: 16.315 min Scan# 2249
 Delta R.T. -0.006 min
 Lab File: BM031044.D
 Acq: 21 Jul 2021 14:30

Tgt Ion:284 Resp: 75997

Ion	Ratio	Lower	Upper
284	100		
142	41.3	29.0	43.4
249	32.5	26.0	39.0

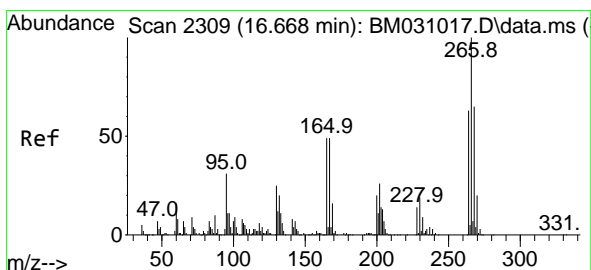
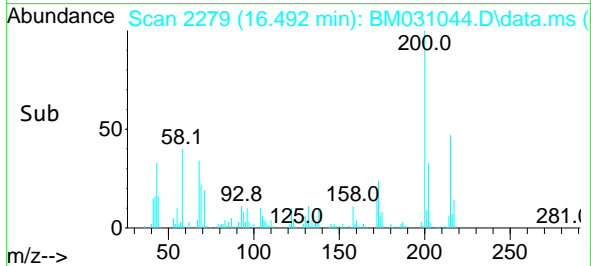
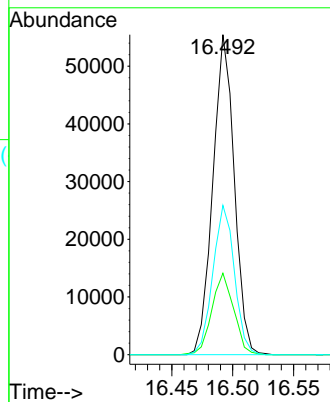
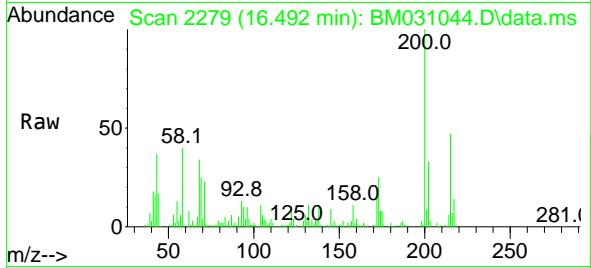




#69
 Atrazine
 Concen: 7.520 ng
 RT: 16.492 min Scan# 2279
 Delta R.T. -0.012 min
 Lab File: BM031044.D
 Acq: 21 Jul 2021 14:30

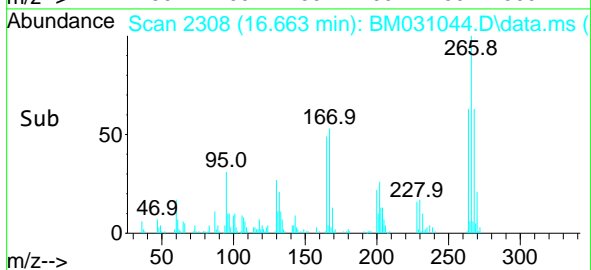
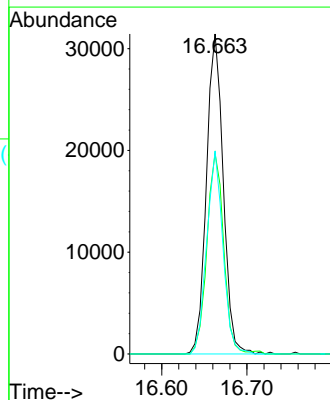
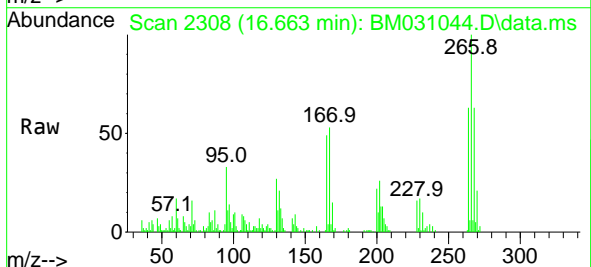
Instrument :
 BNA_M
 ClientSampled :

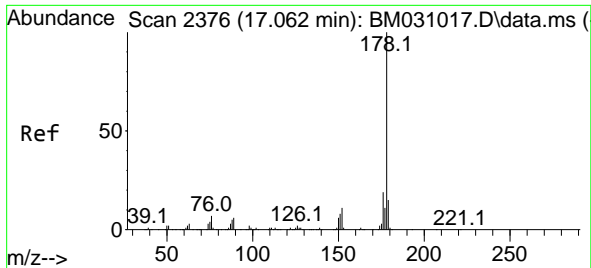
Tgt Ion:200 Resp: 67905
 Ion Ratio Lower Upper
 200 100
 173 25.5 3.8 43.8
 215 46.7 24.8 64.8



#70
 Pentachlorophenol
 Concen: 6.733 ng
 RT: 16.663 min Scan# 2308
 Delta R.T. -0.006 min
 Lab File: BM031044.D
 Acq: 21 Jul 2021 14:30

Tgt Ion:266 Resp: 42943
 Ion Ratio Lower Upper
 266 100
 268 62.7 52.8 79.2
 264 63.4 51.9 77.9

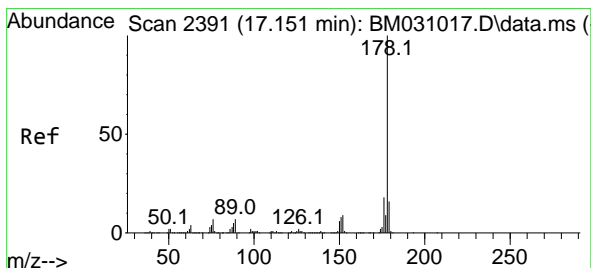
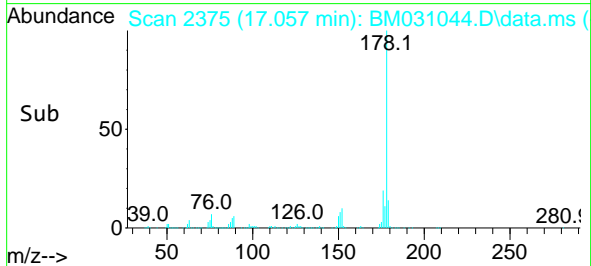
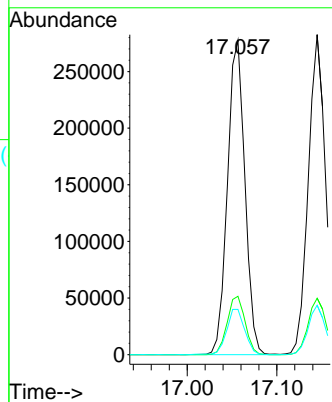
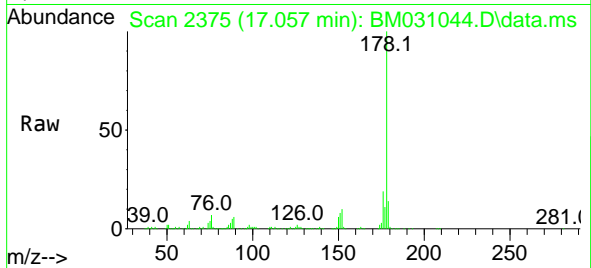




#71
 Phenanthrene
 Concen: 8.084 ng
 RT: 17.057 min Scan# 2375
 Delta R.T. -0.006 min
 Lab File: BM031044.D
 Acq: 21 Jul 2021 14:30

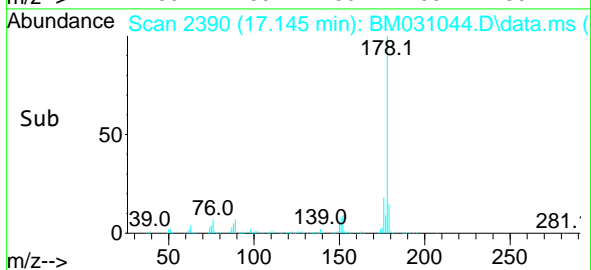
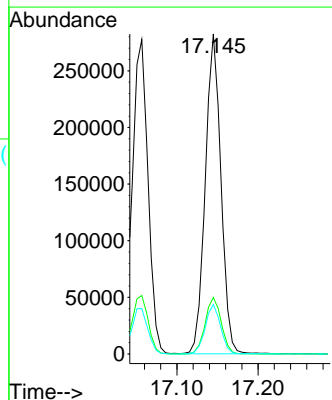
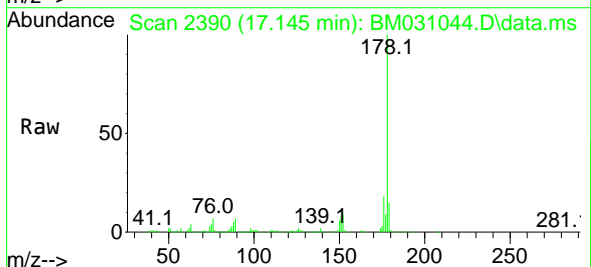
Instrument :
 BNA_M
 ClientSampled :

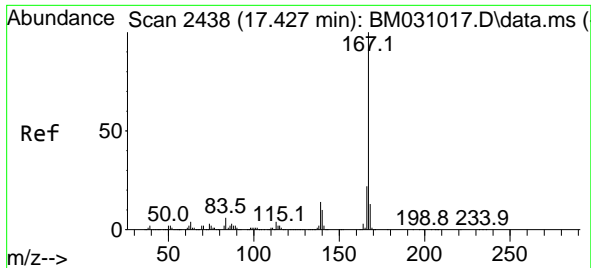
Tgt Ion:178 Resp: 374599
 Ion Ratio Lower Upper
 178 100
 176 18.6 15.4 23.0
 179 14.4 12.2 18.4



#72
 Anthracene
 Concen: 8.281 ng
 RT: 17.145 min Scan# 2390
 Delta R.T. -0.006 min
 Lab File: BM031044.D
 Acq: 21 Jul 2021 14:30

Tgt Ion:178 Resp: 378380
 Ion Ratio Lower Upper
 178 100
 176 17.7 15.0 22.4
 179 15.5 12.5 18.7

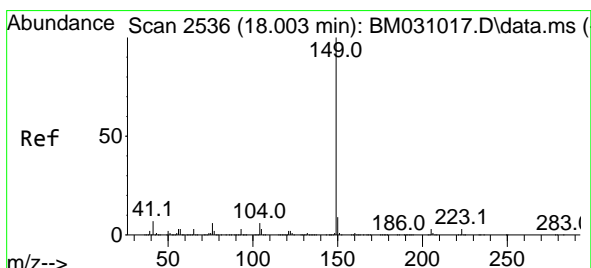
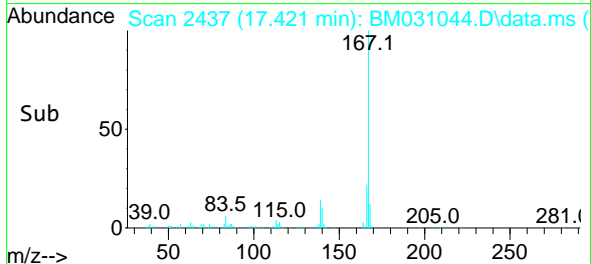
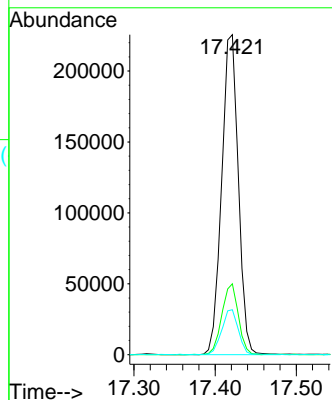
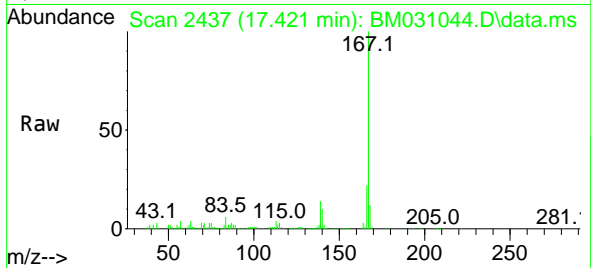




#73
 Carbazole
 Concen: 7.135 ng
 RT: 17.421 min Scan# 2437
 Delta R.T. -0.006 min
 Lab File: BM031044.D
 Acq: 21 Jul 2021 14:30

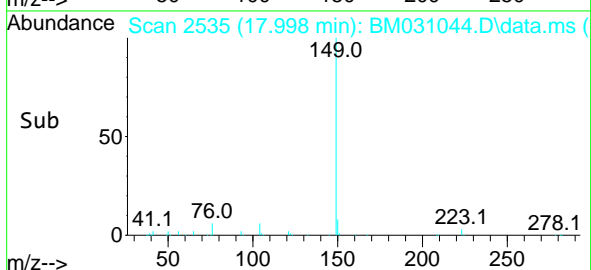
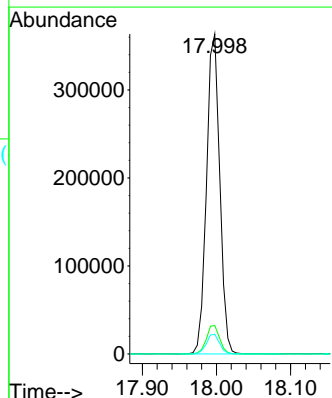
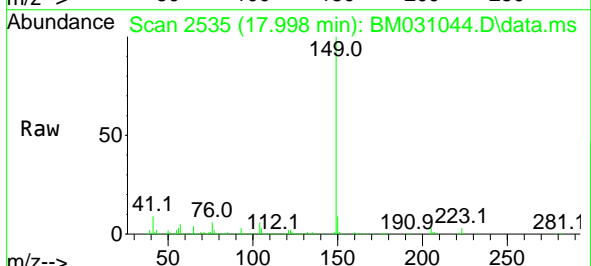
Instrument :
 BNA_M
 ClientSampled :

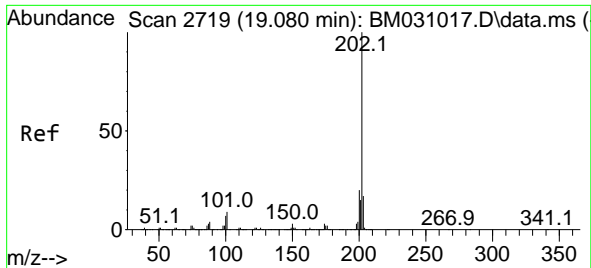
Tgt Ion:167 Resp: 322720
 Ion Ratio Lower Upper
 167 100
 166 22.2 17.4 26.0
 139 14.1 9.8 14.6



#74
 Di-n-butylphthalate
 Concen: 8.488 ng
 RT: 17.998 min Scan# 2535
 Delta R.T. -0.006 min
 Lab File: BM031044.D
 Acq: 21 Jul 2021 14:30

Tgt Ion:149 Resp: 451012
 Ion Ratio Lower Upper
 149 100
 150 8.9 7.2 10.8
 104 6.1 4.3 6.5

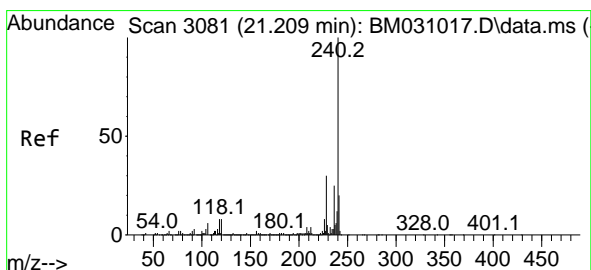
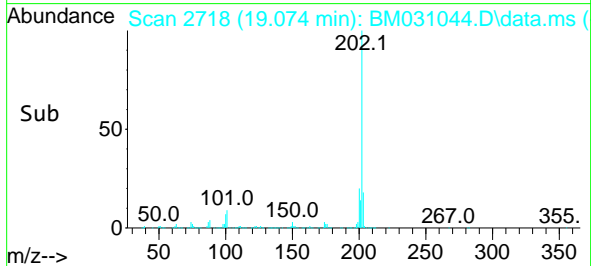
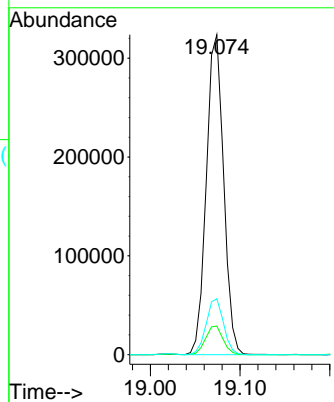
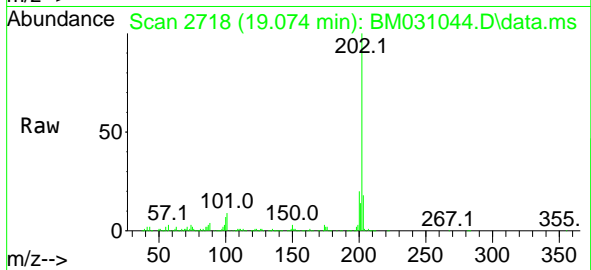




#75
 Fluoranthene
 Concen: 7.478 ng
 RT: 19.074 min Scan# 2718
 Delta R.T. -0.006 min
 Lab File: BM031044.D
 Acq: 21 Jul 2021 14:30

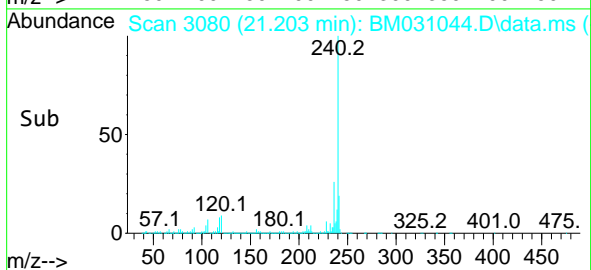
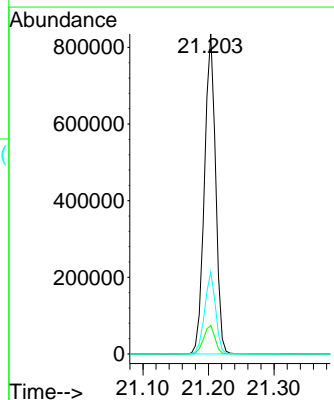
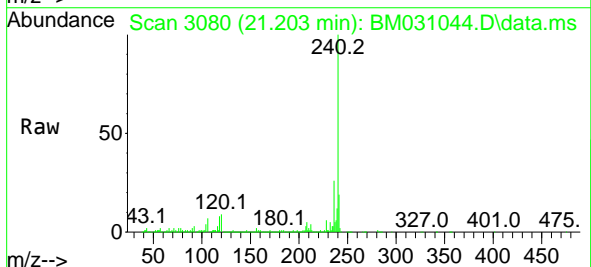
Instrument :
 BNA_M
 ClientSampled :

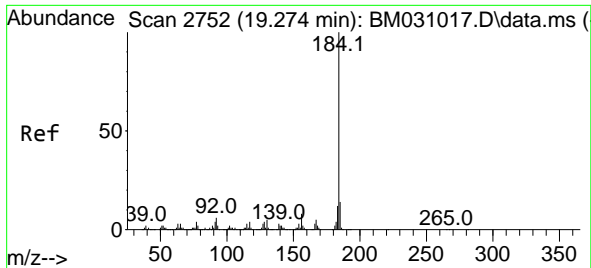
Tgt Ion	Resp	Lower	Upper
202	433616		
101	8.9	0.0	28.6
203	17.5	0.0	37.3



#76
 Chrysene-d12
 Concen: 20.000 ng
 RT: 21.203 min Scan# 3080
 Delta R.T. -0.006 min
 Lab File: BM031044.D
 Acq: 21 Jul 2021 14:30

Tgt Ion	Resp	Lower	Upper
240	987802		
120	8.9	7.0	10.6
236	25.7	21.0	31.4

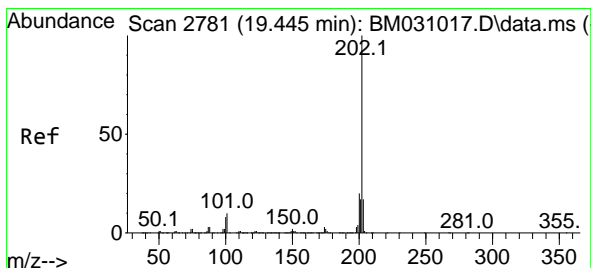
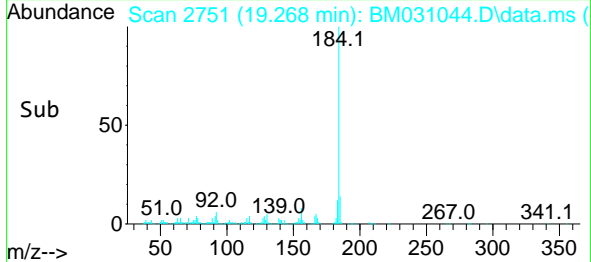
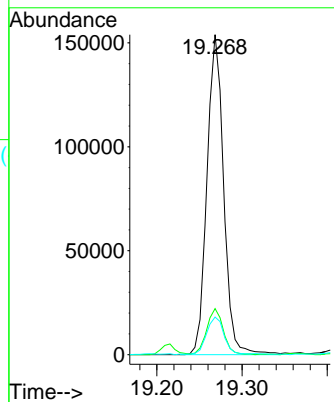
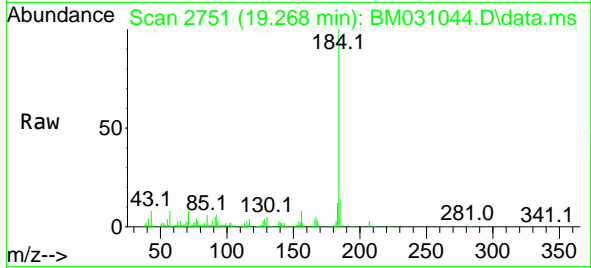




#77
 Benzidine
 Concen: 8.596 ng
 RT: 19.268 min Scan# 2751
 Delta R.T. -0.006 min
 Lab File: BM031044.D
 Acq: 21 Jul 2021 14:30

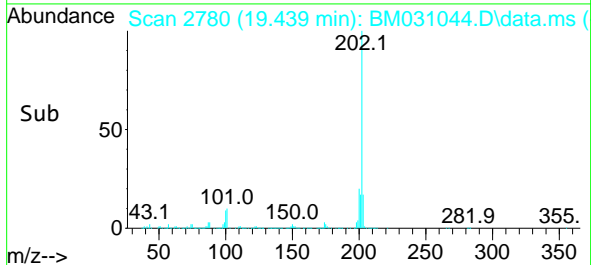
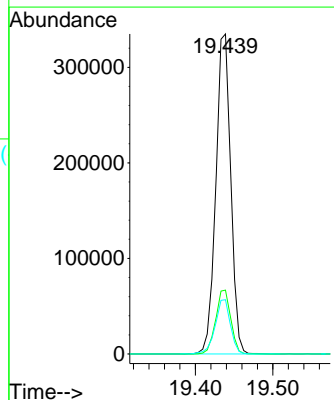
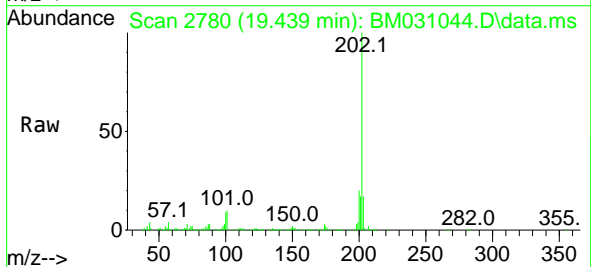
Instrument :
 BNA_M
 ClientSampled :

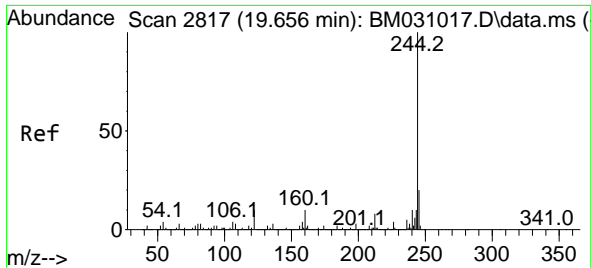
Tgt Ion:184 Resp: 209632
 Ion Ratio Lower Upper
 184 100
 185 14.4 10.9 16.3
 183 11.7 9.8 14.8



#78
 Pyrene
 Concen: 7.279 ng
 RT: 19.439 min Scan# 2780
 Delta R.T. -0.006 min
 Lab File: BM031044.D
 Acq: 21 Jul 2021 14:30

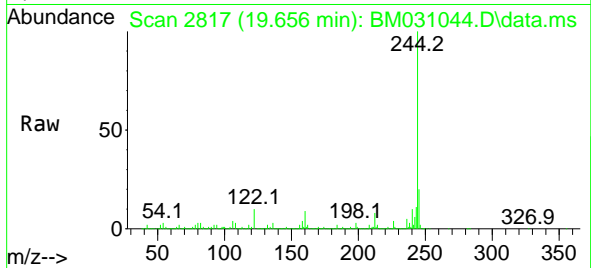
Tgt Ion:202 Resp: 448999
 Ion Ratio Lower Upper
 202 100
 200 19.9 17.3 25.9
 203 16.9 13.9 20.9



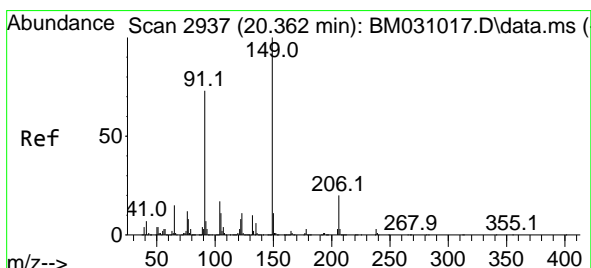
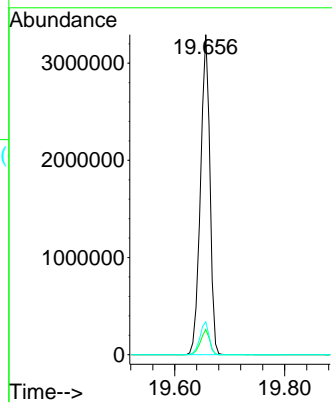
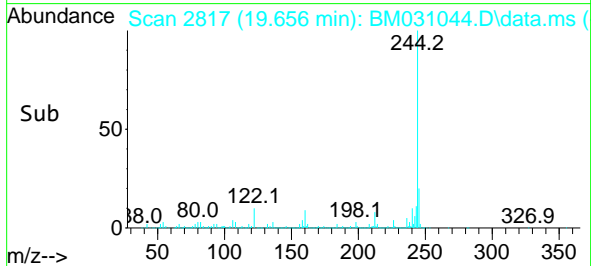


#79
 Terphenyl-d14
 Concen: 78.409 ng
 RT: 19.656 min Scan# 2817
 Delta R.T. 0.000 min
 Lab File: BM031044.D
 Acq: 21 Jul 2021 14:30

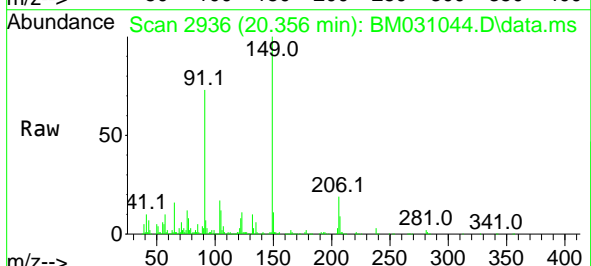
Instrument :
 BNA_M
 ClientSampled :



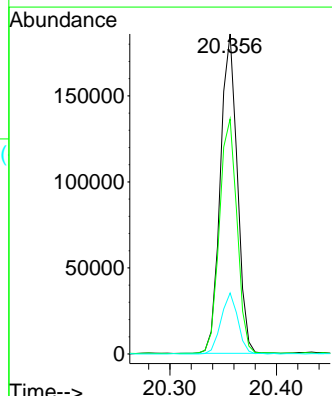
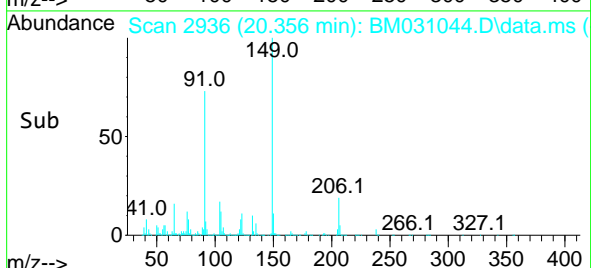
Tgt Ion:244 Resp: 3914651
 Ion Ratio Lower Upper
 244 100
 212 7.8 6.3 9.5
 122 10.3 6.9 10.3

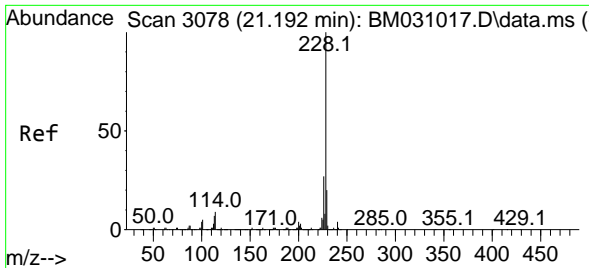


#80
 Butylbenzylphthalate
 Concen: 7.743 ng
 RT: 20.356 min Scan# 2936
 Delta R.T. -0.006 min
 Lab File: BM031044.D
 Acq: 21 Jul 2021 14:30



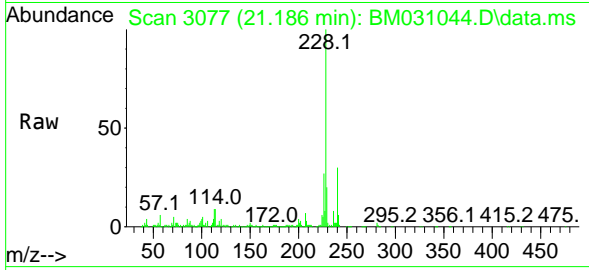
Tgt Ion:149 Resp: 203929
 Ion Ratio Lower Upper
 149 100
 91 73.4 57.4 86.0
 206 19.1 16.6 25.0





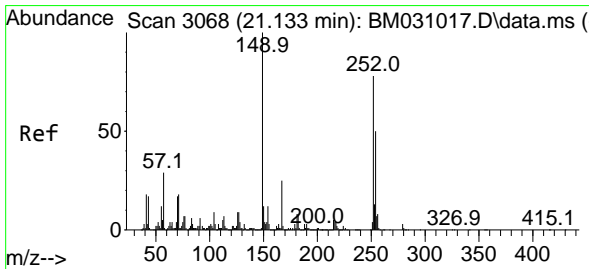
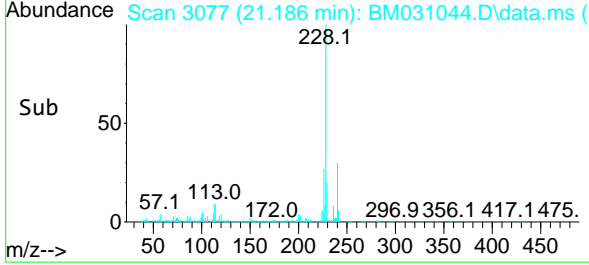
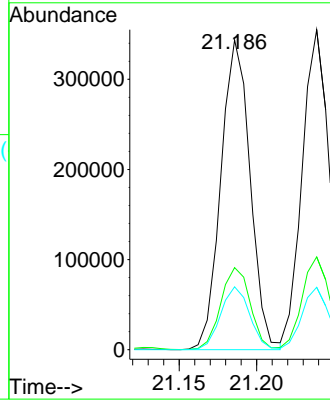
#81
 Benzo(a)anthracene
 Concen: 6.895 ng
 RT: 21.186 min Scan# 3077
 Delta R.T. -0.006 min
 Lab File: BM031044.D
 Acq: 21 Jul 2021 14:30

Instrument :
 BNA_M
 ClientSampled :



Tgt Ion:228 Resp: 451399

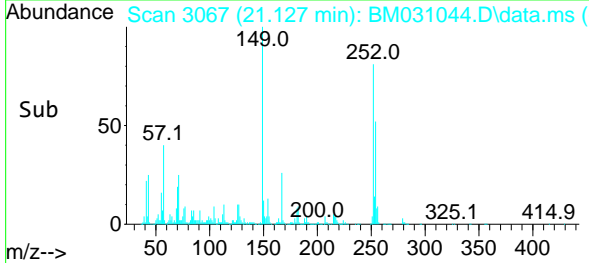
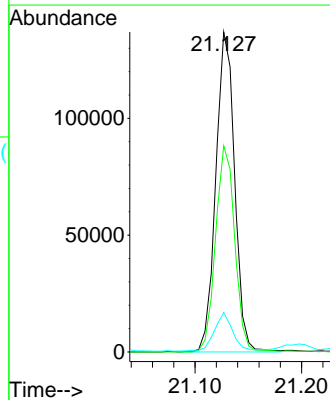
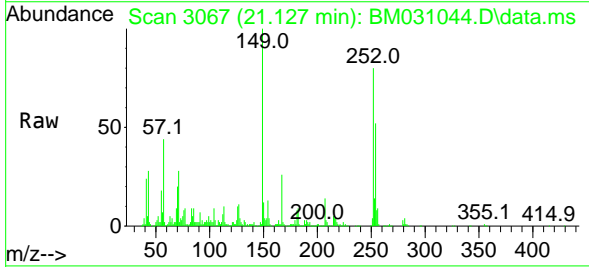
Ion	Ratio	Lower	Upper
228	100		
226	26.5	22.3	33.5
229	20.3	15.7	23.5

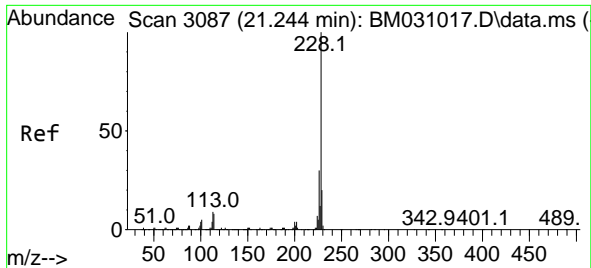


#82
 3,3'-Dichlorobenzidine
 Concen: 9.358 ng
 RT: 21.127 min Scan# 3067
 Delta R.T. -0.006 min
 Lab File: BM031044.D
 Acq: 21 Jul 2021 14:30

Tgt Ion:252 Resp: 167930

Ion	Ratio	Lower	Upper
252	100		
254	64.4	51.5	77.3
126	12.3	8.6	13.0



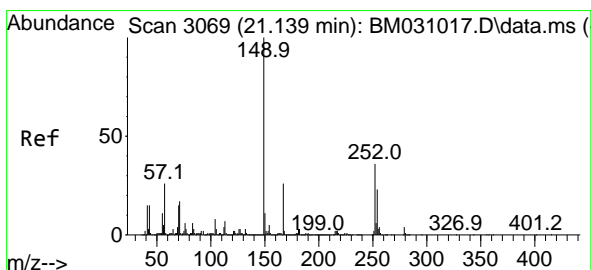
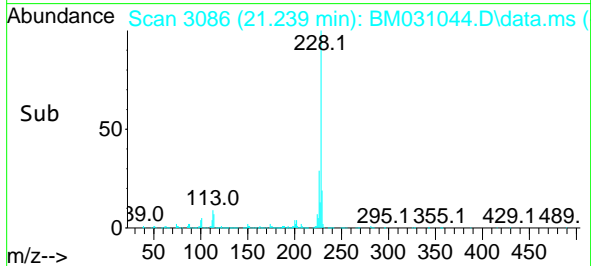
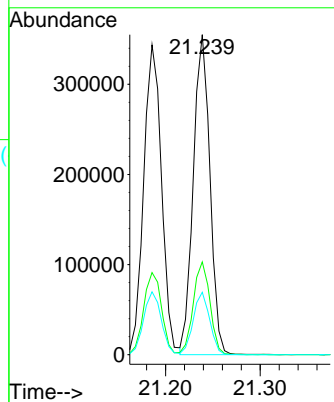
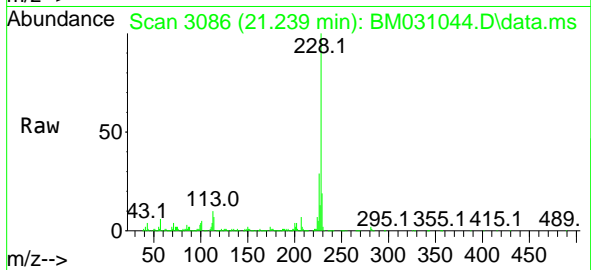


#83
 Chrysene
 Concen: 6.826 ng
 RT: 21.239 min Scan# 3086
 Delta R.T. -0.006 min
 Lab File: BM031044.D
 Acq: 21 Jul 2021 14:30

Instrument :
 BNA_M
 ClientSampled :

Tgt Ion:228 Resp: 434158

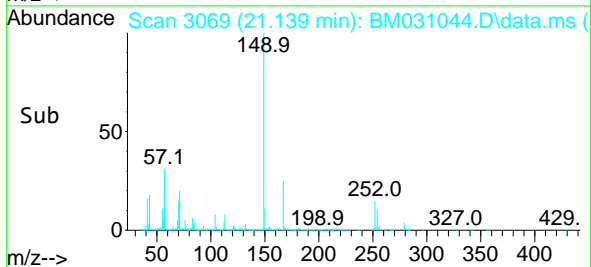
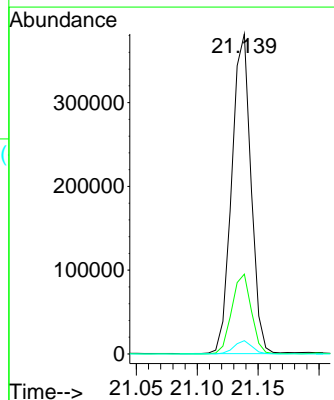
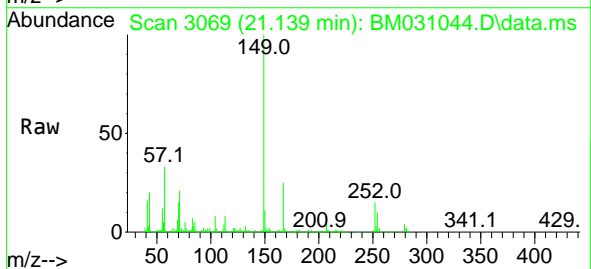
Ion	Ratio	Lower	Upper
228	100		
226	29.0	24.6	36.8
229	19.5	15.5	23.3

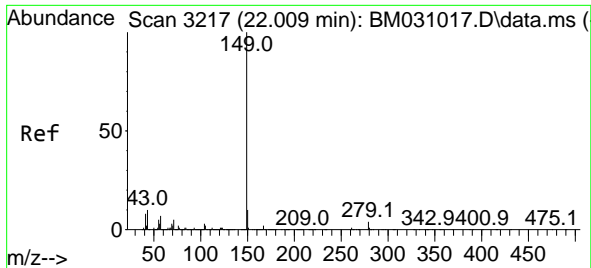


#84
 Bis(2-ethylhexyl)phthalate
 Concen: 10.258 ng
 RT: 21.139 min Scan# 3069
 Delta R.T. 0.000 min
 Lab File: BM031044.D
 Acq: 21 Jul 2021 14:30

Tgt Ion:149 Resp: 418596

Ion	Ratio	Lower	Upper
149	100		
167	24.9	22.6	33.8
279	4.2	3.8	5.8



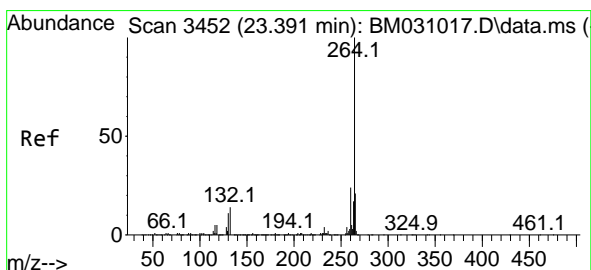
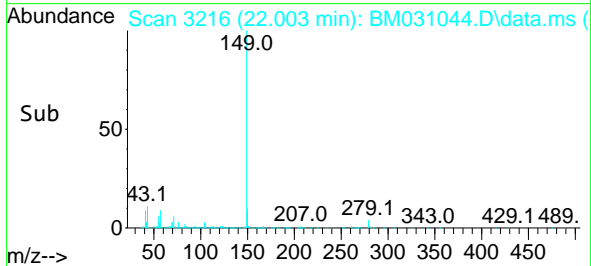
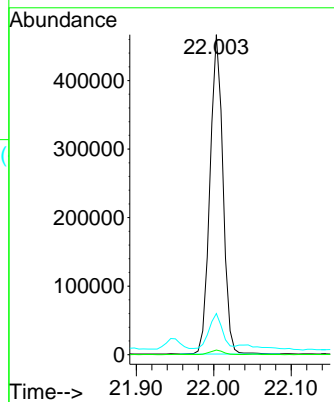
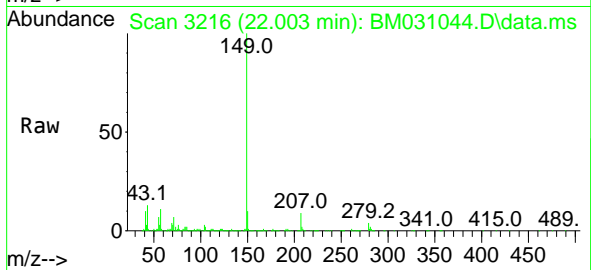


#85
 Di-n-octyl phthalate
 Concen: 7.722 ng
 RT: 22.003 min Scan# 3216
 Delta R.T. -0.006 min
 Lab File: BM031044.D
 Acq: 21 Jul 2021 14:30

Instrument :
 BNA_M
 ClientSampled :

Tgt Ion:149 Resp: 539567

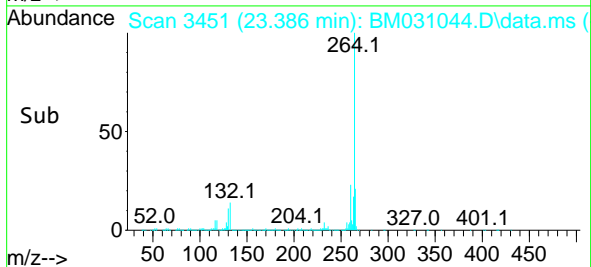
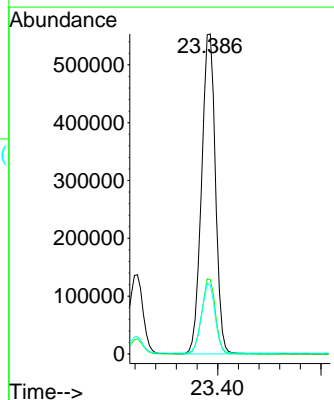
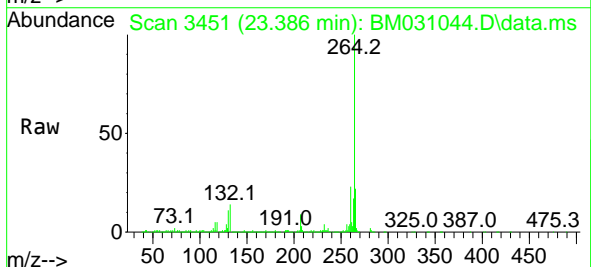
Ion	Ratio	Lower	Upper
149	100		
167	1.6	1.3	1.9
43	12.6	7.4	11.0#

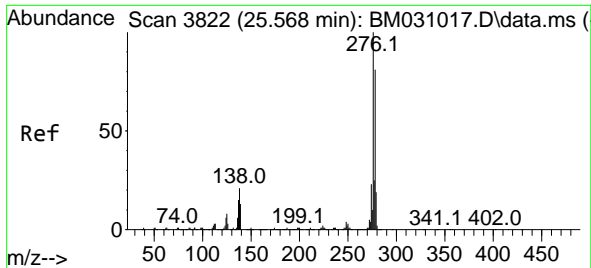


#86
 Perylene-d12
 Concen: 20.000 ng
 RT: 23.386 min Scan# 3451
 Delta R.T. -0.006 min
 Lab File: BM031044.D
 Acq: 21 Jul 2021 14:30

Tgt Ion:264 Resp: 1028375

Ion	Ratio	Lower	Upper
264	100		
260	23.2	19.8	29.8
265	21.5	17.7	26.5

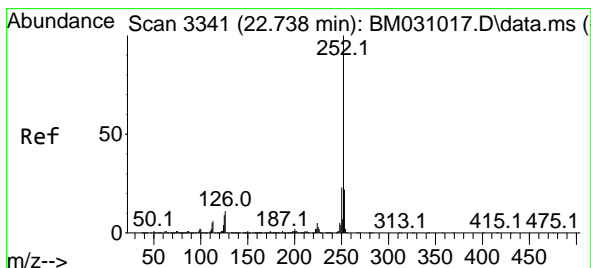
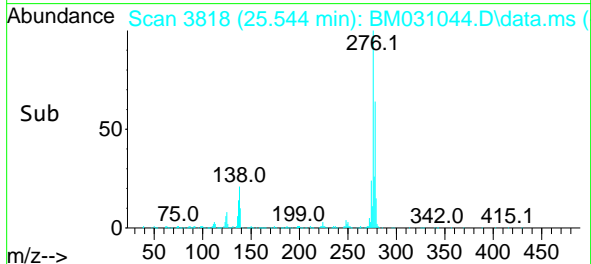
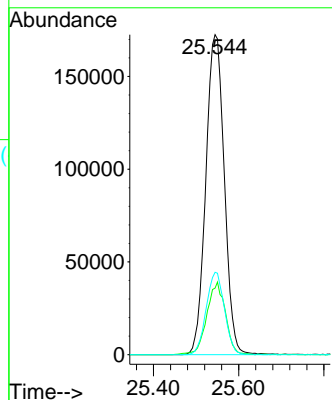
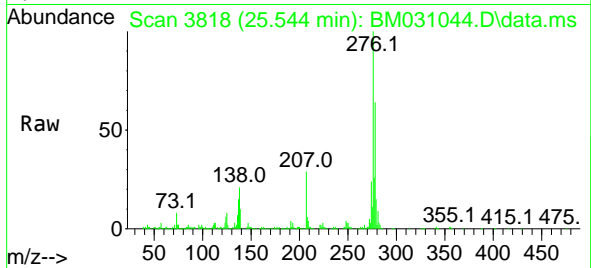




#87
 Indeno(1,2,3-cd)pyrene
 Concen: 7.094 ng
 RT: 25.544 min Scan# 3818
 Delta R.T. -0.023 min
 Lab File: BM031044.D
 Acq: 21 Jul 2021 14:30

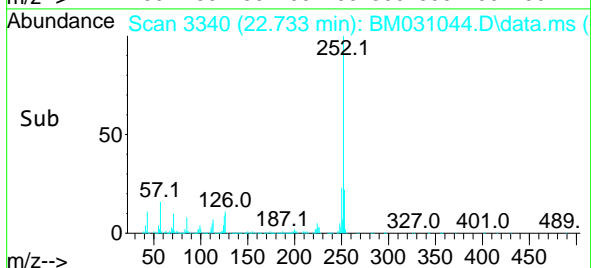
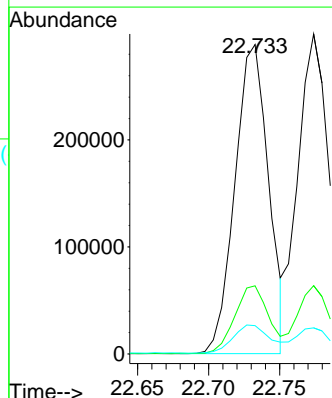
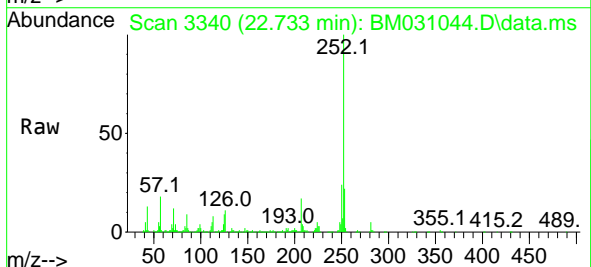
Instrument :
 BNA_M
 ClientSampled :

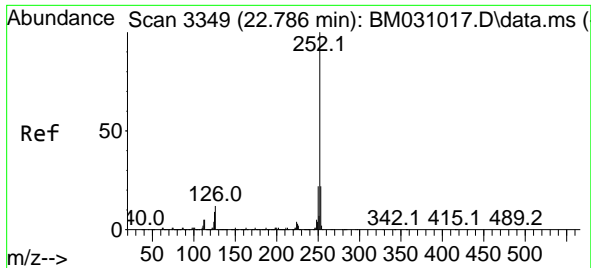
Tgt Ion:276 Resp: 521290
 Ion Ratio Lower Upper
 276 100
 138 22.8 17.1 25.7
 277 25.4 20.3 30.5



#88
 Benzo(b)fluoranthene
 Concen: 6.983 ng
 RT: 22.733 min Scan# 3340
 Delta R.T. -0.006 min
 Lab File: BM031044.D
 Acq: 21 Jul 2021 14:30

Tgt Ion:252 Resp: 475876
 Ion Ratio Lower Upper
 252 100
 253 22.0 17.4 26.0
 125 9.2 6.8 10.2

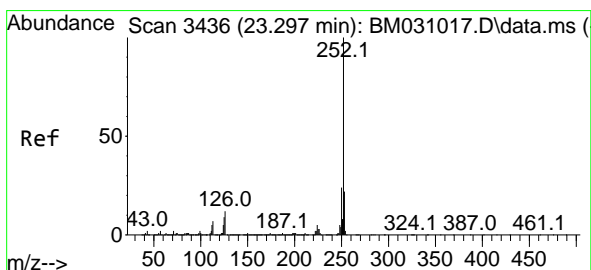
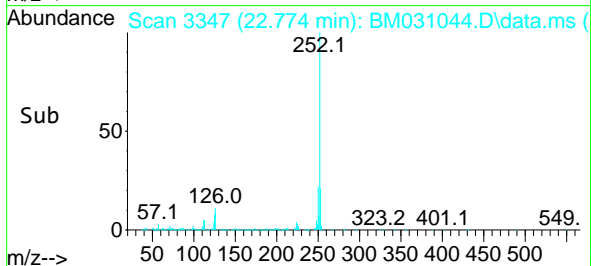
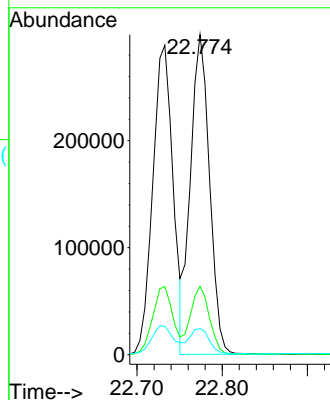
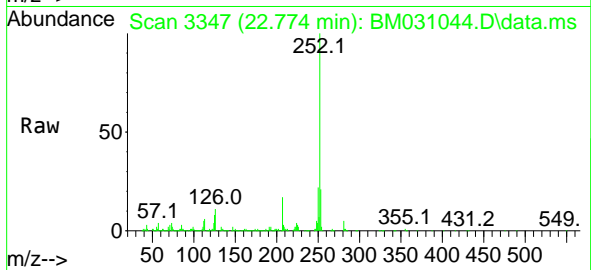




#89
 Benzo(k)fluoranthene
 Concen: 7.264 ng
 RT: 22.774 min Scan# 3347
 Delta R.T. -0.012 min
 Lab File: BM031044.D
 Acq: 21 Jul 2021 14:30

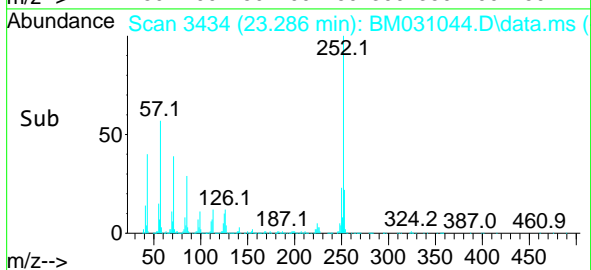
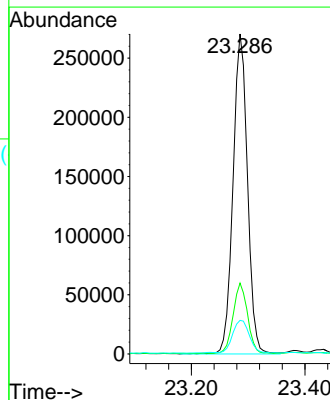
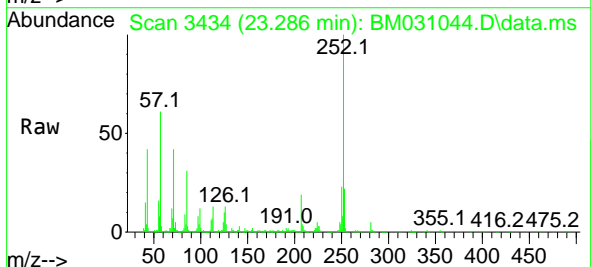
Instrument :
 BNA_M
 ClientSampled :

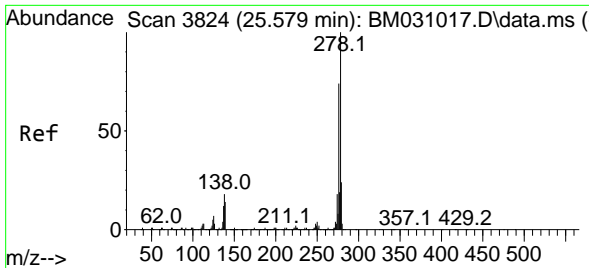
Tgt Ion:252 Resp: 462962
 Ion Ratio Lower Upper
 252 100
 253 21.3 17.4 26.2
 125 8.2 6.2 9.2



#90
 Benzo(a)pyrene
 Concen: 7.765 ng
 RT: 23.286 min Scan# 3434
 Delta R.T. -0.012 min
 Lab File: BM031044.D
 Acq: 21 Jul 2021 14:30

Tgt Ion:252 Resp: 476303
 Ion Ratio Lower Upper
 252 100
 253 22.1 17.7 26.5
 125 10.5 7.3 10.9



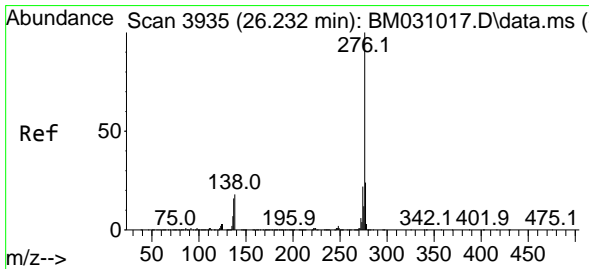
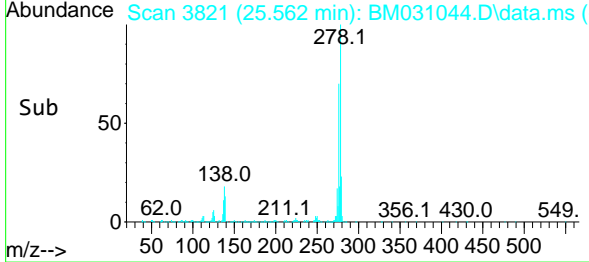
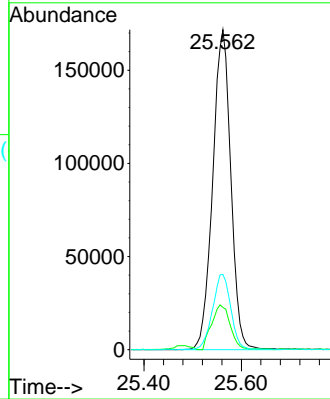
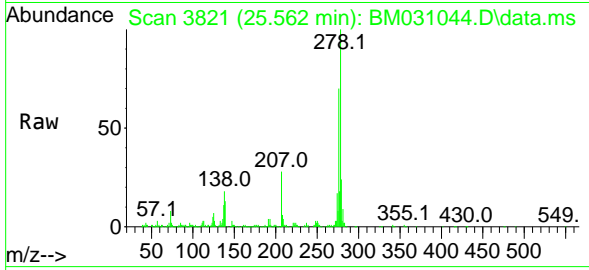


#91
 Dibenzo(a,h)anthracene
 Concen: 6.961 ng
 RT: 25.562 min Scan# 3821
 Delta R.T. -0.018 min
 Lab File: BM031044.D
 Acq: 21 Jul 2021 14:30

Instrument :
 BNA_M
 ClientSampled :

Tgt Ion:278 Resp: 442780

Ion	Ratio	Lower	Upper
278	100		
139	13.2	11.0	16.4
279	23.5	18.7	28.1



#92
 Benzo(g,h,i)perylene
 Concen: 7.215 ng
 RT: 26.203 min Scan# 3930
 Delta R.T. -0.029 min
 Lab File: BM031044.D
 Acq: 21 Jul 2021 14:30

Tgt Ion:276 Resp: 437322

Ion	Ratio	Lower	Upper
276	100		
277	24.0	19.4	29.2
138	17.2	14.4	21.6

