

Data Path : Z:\HPCHEM1\BNA_M\DATA\BM072315\
 Data File : BM002023.D
 Acq On : 23 Jul 2015 19:12
 Operator : TP/UM
 Sample : G3000-18RE
 Misc :
 ALS Vial : 11 Sample Multiplier: 1

Instrument :
 BNA_M
 ClientSampleId :
 C02J2RE

Integration Parameters: LSCINT.P

Integrator: RTE
 Smoothing : OFF
 Sampling : 1
 Start Thrs: 0.2
 Stop Thrs : 0

Filtering: 5
 Min Area: 0.1 % of largest Peak
 Max Peaks: 100
 Peak Location: TOP

If leading or trailing edge < 100 prefer < Baseline drop else tangent >
 Peak separation: 5

Method : Z:\HPCHEM1\BNA_M\METHODS\SOM02.2-EPA-BM071315.M
 Title : SVOA CALIBRATION

Signal : TIC

peak #	R.T. min	first scan	max scan	last scan	PK TY	peak height	corr. area	corr. % max.	% of total
1	2.740	5	9	13	rBV4	6396	12309	0.70%	0.060%
2	2.787	13	17	20	rVV	26004	32215	1.83%	0.157%
3	2.822	20	23	29	rVV	170933	210164	11.95%	1.026%
4	2.869	29	31	38	rVB	20538	28230	1.60%	0.138%
5	3.087	65	68	72	rVB	7317	8620	0.49%	0.042%
6	3.604	151	156	160	rBV	15268	19542	1.11%	0.095%
7	3.822	187	193	199	rBV2	5679	9627	0.55%	0.047%
8	5.263	433	438	445	rBB	7137	13736	0.78%	0.067%
9	5.628	493	500	505	rBB2	8780	15618	0.89%	0.076%
10	6.598	660	665	672	rBV6	6482	11928	0.68%	0.058%
11	6.792	686	698	709	rBB	153075	288908	16.42%	1.411%
12	6.951	719	725	736	rBV	115988	177074	10.06%	0.865%
13	7.092	743	749	752	rBV2	4391	8491	0.48%	0.041%
14	7.145	752	758	767	rVV	162961	254124	14.44%	1.241%
15	7.228	767	772	775	rVV2	10487	15327	0.87%	0.075%
16	7.257	775	777	784	rVB3	7022	9071	0.52%	0.044%
17	7.616	828	838	845	rBV	276513	440392	25.03%	2.151%
18	7.739	853	859	863	rBV3	5947	12363	0.70%	0.060%
19	8.151	921	929	933	rBV5	7094	16436	0.93%	0.080%
20	8.328	953	959	967	rBV	144451	233157	13.25%	1.139%
21	8.439	972	978	987	rVB	98704	159853	9.09%	0.781%
22	8.704	1013	1023	1029	rVV7	8661	20154	1.15%	0.098%
23	8.775	1029	1035	1041	rVV	157439	256457	14.58%	1.252%
24	8.828	1041	1044	1049	rVV	16382	27318	1.55%	0.133%
25	8.898	1049	1056	1061	rVV6	6291	20439	1.16%	0.100%
26	8.951	1063	1065	1070	rVB4	6671	9583	0.54%	0.047%
27	9.322	1120	1128	1133	rVB5	8642	18804	1.07%	0.092%
28	9.492	1150	1157	1167	rBV	135094	241026	13.70%	1.177%
29	9.575	1167	1171	1176	rVV3	11535	20242	1.15%	0.099%
30	9.663	1179	1186	1194	rVV3	25709	52342	2.97%	0.256%
31	9.739	1194	1199	1205	rVB6	8782	18280	1.04%	0.089%
32	9.816	1205	1212	1215	rBV5	11231	25756	1.46%	0.126%
33	9.851	1215	1218	1223	rVB2	16749	26956	1.53%	0.132%
34	9.980	1235	1240	1242	rBV5	5014	8023	0.46%	0.039%

Data Path : Z:\HPCHEM1\BNA_M\DATA\BM072315\
 Data File : BM002023.D
 Acq On : 23 Jul 2015 19:12
 Operator : TP/UM
 Sample : G3000-18RE
 Misc :
 ALS Vial : 11 Sample Multiplier: 1

Instrument :
 BNA_M
 ClientSampleId :
 C02J2RE

Integration Parameters: LSCINT.P

Integrator: RTE
 Smoothing : OFF
 Sampling : 1
 Start Thrs: 0.2
 Stop Thrs : 0

Filtering: 5
 Min Area: 0.1 % of largest Peak
 Max Peaks: 100
 Peak Location: TOP

If leading or trailing edge < 100 prefer < Baseline drop else tangent >
 Peak separation: 5

Method : Z:\HPCHEM1\BNA_M\METHODS\SOM02.2-EPA-BM071315.M
 Title : SVOA CALIBRATION

35	10.028	1242	1248	1255	rVB	208576	352255	20.02%	1.720%
36	10.104	1255	1261	1262	rBV2	7334	8756	0.50%	0.043%
37	10.263	1283	1288	1291	rBV4	7171	13655	0.78%	0.067%
38	10.404	1301	1312	1317	rBV	362312	614693	34.94%	3.002%
39	10.451	1317	1320	1327	rVB	41667	68040	3.87%	0.332%
40	10.551	1327	1337	1344	rBV2	86950	166981	9.49%	0.815%
41	10.622	1346	1349	1352	rVV4	8104	10358	0.59%	0.051%
42	10.680	1356	1359	1364	rVB6	7013	10884	0.62%	0.053%
43	10.810	1372	1381	1383	rBV5	7569	14398	0.82%	0.070%
44	10.880	1389	1393	1399	rVB5	14728	24082	1.37%	0.118%
45	10.945	1399	1404	1412	rVB4	23524	40310	2.29%	0.197%
46	11.010	1412	1415	1419	rBV5	5821	8464	0.48%	0.041%
47	11.063	1419	1424	1426	rBV4	15162	26903	1.53%	0.131%
48	11.092	1426	1429	1434	rVV4	20785	38007	2.16%	0.186%
49	11.157	1437	1440	1444	rVV4	8382	12567	0.71%	0.061%
50	11.233	1448	1453	1460	rVB7	19326	33409	1.90%	0.163%
51	11.310	1462	1466	1473	rVB9	19752	46055	2.62%	0.225%
52	11.375	1474	1477	1480	rBV4	8238	10670	0.61%	0.052%
53	11.422	1480	1485	1494	rBV2	68148	145836	8.29%	0.712%
54	11.586	1506	1513	1520	rBV7	25004	58964	3.35%	0.288%
55	11.680	1523	1529	1535	rBV6	29138	50497	2.87%	0.247%
56	11.827	1547	1554	1560	rBV6	37243	91725	5.21%	0.448%
57	11.963	1575	1577	1583	rVB6	22474	29914	1.70%	0.146%
58	12.051	1589	1592	1594	rBV2	19641	25180	1.43%	0.123%
59	12.139	1603	1607	1614	rBV7	18935	39627	2.25%	0.194%
60	12.204	1614	1618	1619	rBV3	15959	18570	1.06%	0.091%
61	12.233	1620	1623	1627	rVB4	24917	32691	1.86%	0.160%
62	12.469	1658	1663	1667	rBV5	41637	73634	4.19%	0.360%
63	12.533	1668	1674	1680	rVB4	39666	92918	5.28%	0.454%
64	12.586	1680	1683	1684	rBV2	14981	13983	0.79%	0.068%
65	12.657	1692	1695	1698	rBV5	16760	21269	1.21%	0.104%
66	12.692	1699	1701	1706	rVB4	28790	36962	2.10%	0.181%
67	12.745	1706	1710	1714	rBV3	44180	77264	4.39%	0.377%
68	12.798	1714	1719	1725	rVV	177940	250919	14.26%	1.225%
69	12.857	1725	1729	1733	rVB5	23070	41366	2.35%	0.202%
70	13.069	1761	1765	1767	rBV2	50299	71432	4.06%	0.349%
71	13.186	1781	1785	1788	rBV3	33674	55834	3.17%	0.273%

Data Path : Z:\HPCHEM1\BNA_M\DATA\BM072315\
 Data File : BM002023.D
 Acq On : 23 Jul 2015 19:12
 Operator : TP/UM
 Sample : G3000-18RE
 Misc :
 ALS Vial : 11 Sample Multiplier: 1

Instrument :
 BNA_M
 ClientSampleId :
 C02J2RE

Integration Parameters: LSCINT.P

Integrator: RTE
 Smoothing : OFF
 Sampling : 1
 Start Thrs: 0.2
 Stop Thrs : 0

Filtering: 5
 Min Area: 0.1 % of largest Peak
 Max Peaks: 100
 Peak Location: TOP

If leading or trailing edge < 100 prefer < Baseline drop else tangent >
 Peak separation: 5

Method : Z:\HPCHEM1\BNA_M\METHODS\SOM02.2-EPA-BM071315.M
 Title : SVOA CALIBRATION

72	13.257	1794	1797	1801	rVB2	46146	61938	3.52%	0.302%
73	13.321	1802	1808	1814	rBV8	42518	106113	6.03%	0.518%
74	13.586	1849	1853	1859	rBV2	336867	507895	28.87%	2.480%
75	13.692	1866	1871	1874	rVB	408638	557143	31.67%	2.721%
76	13.745	1874	1880	1885	rVB2	410661	907247	51.56%	4.431%
77	13.798	1885	1889	1898	rVB6	84293	157549	8.95%	0.769%
78	13.868	1898	1901	1906	rVB4	45862	70050	3.98%	0.342%
79	13.927	1907	1911	1913	rBV4	40616	61345	3.49%	0.300%
80	13.968	1913	1918	1922	rBV	406294	607820	34.55%	2.968%
81	14.004	1922	1924	1928	rVB3	125171	136155	7.74%	0.665%
82	14.098	1936	1940	1947	rVB4	153159	285654	16.24%	1.395%
83	14.174	1949	1953	1958	rBV3	117843	192716	10.95%	0.941%
84	14.245	1961	1965	1966	rVV3	106959	133267	7.57%	0.651%
85	14.280	1966	1971	1977	rVB2	560998	983931	55.92%	4.805%
86	14.339	1978	1981	1984	rBV2	58397	84112	4.78%	0.411%
87	14.498	2003	2008	2009	rBV2	171455	224116	12.74%	1.095%
88	14.527	2009	2013	2019	rVB	447364	686291	39.01%	3.352%
89	14.680	2035	2039	2043	rBV	157642	220707	12.54%	1.078%
90	14.798	2055	2059	2065	rVB2	195101	291372	16.56%	1.423%
91	15.274	2136	2140	2144	rVB	504927	645853	36.71%	3.154%
92	15.533	2180	2184	2195	rVB	555826	969592	55.11%	4.735%
93	15.745	2217	2220	2225	rBV2	123550	177766	10.10%	0.868%
94	16.015	2259	2266	2271	rBV	1020026	1759429	100.00%	8.593%
95	16.839	2401	2406	2410	rBV	865008	1239320	70.44%	6.053%
96	17.027	2434	2438	2442	rBV	720654	1081884	61.49%	5.284%
97	17.074	2443	2446	2450	rVV	412003	554266	31.50%	2.707%
98	17.127	2451	2455	2459	rVV	502149	689478	39.19%	3.367%
99	17.445	2505	2509	2514	rBV	449020	674765	38.35%	3.295%
100	19.156	2797	2800	2804	rVB	849665	956606	54.37%	4.672%

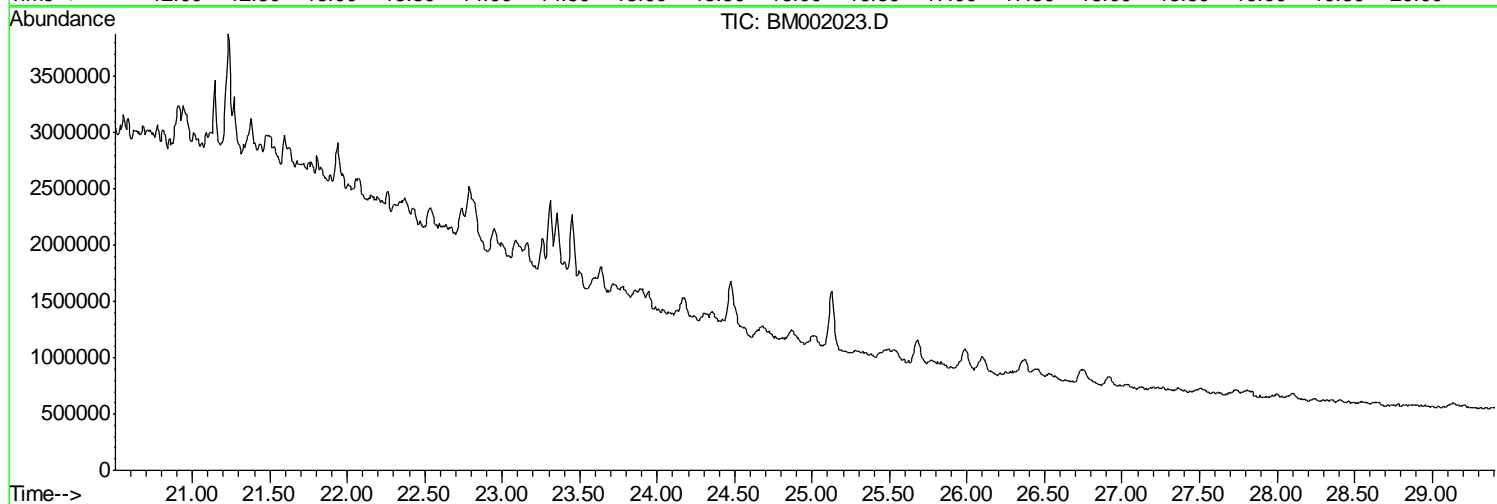
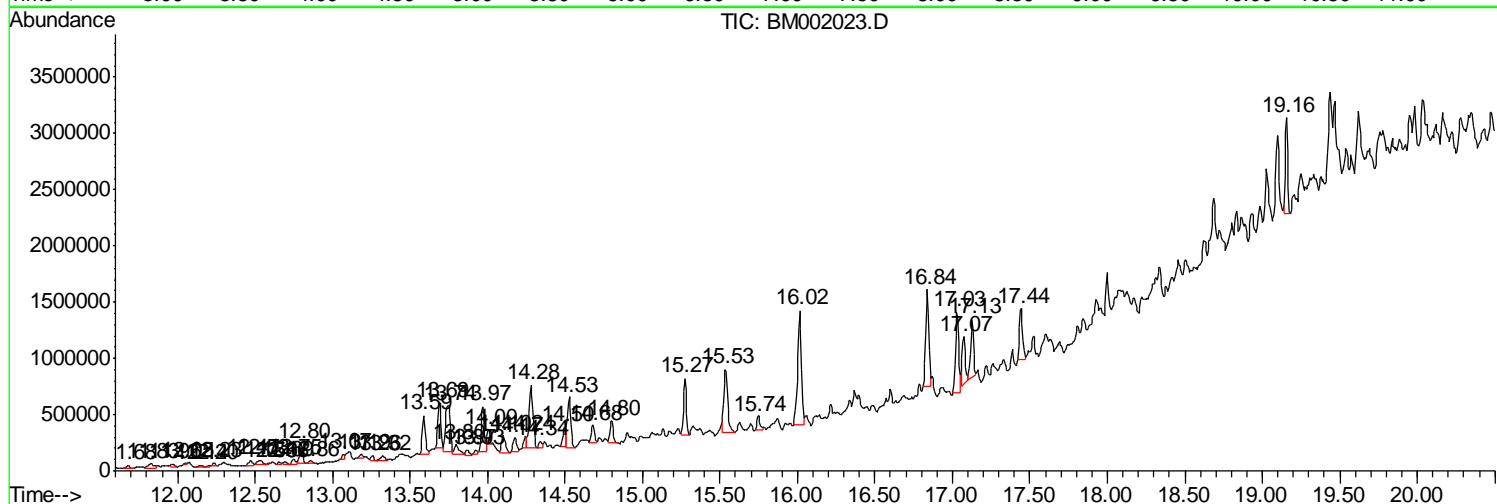
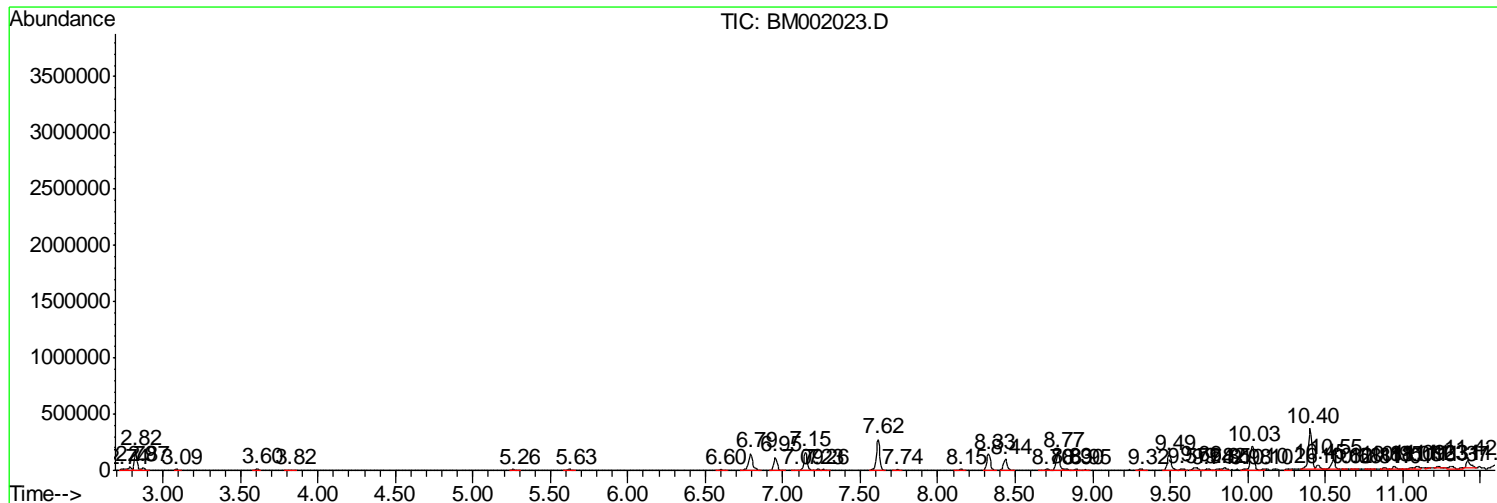
Sum of corrected areas: 20476017

Data Path : Z:\HPCHEM1\BNA_M\DATA\BM072315\
 Data File : BM002023.D
 Acq On : 23 Jul 2015 19:12
 Operator : TP/UM
 Sample : G3000-18RE
 Misc :
 ALS Vial : 11 Sample Multiplier: 1

Instrument :
 BNA_M
ClientSampleId :
 C02J2RE

Quant Method : Z:\HPCHEM1\BNA_M\METHODS\SOM02.2-EPA-BM071315.M
 Quant Title : SVOA CALIBRATION

TIC Library : C:\DATABASE\NIST02.L
 TIC Integration Parameters: LSCINT.P



Data Path : Z:\HPCHEM1\BNA_M\DATA\BM072315\
 Data File : BM002023.D
 Acq On : 23 Jul 2015 19:12
 Operator : TP/UM
 Sample : G3000-18RE
 Misc :
 ALS Vial : 11 Sample Multiplier: 1

Instrument :
 BNA_M
 ClientSampleID :
 C02J2RE

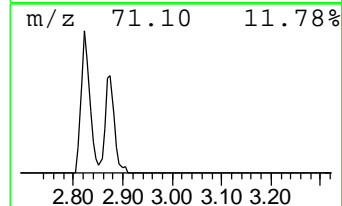
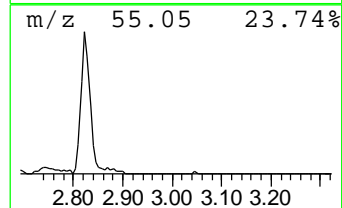
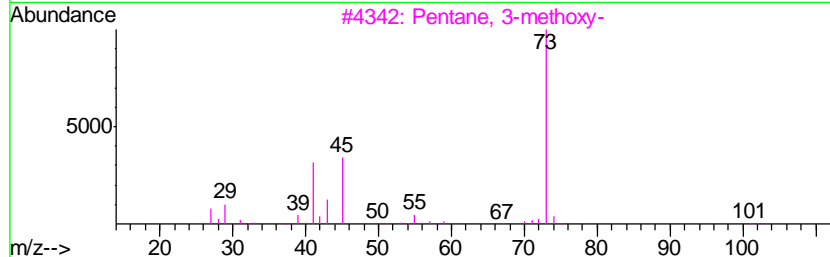
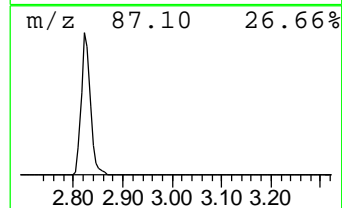
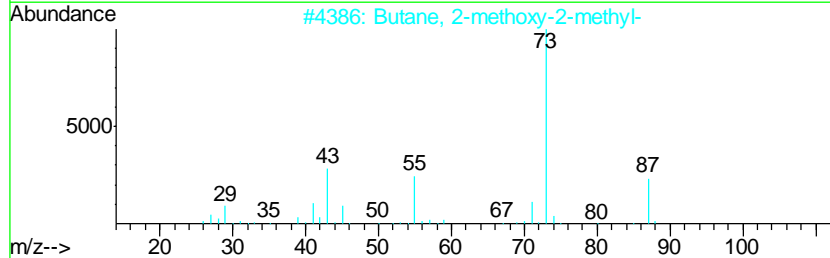
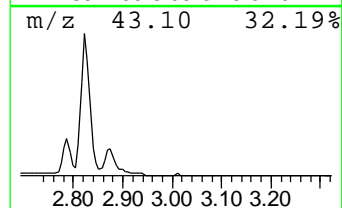
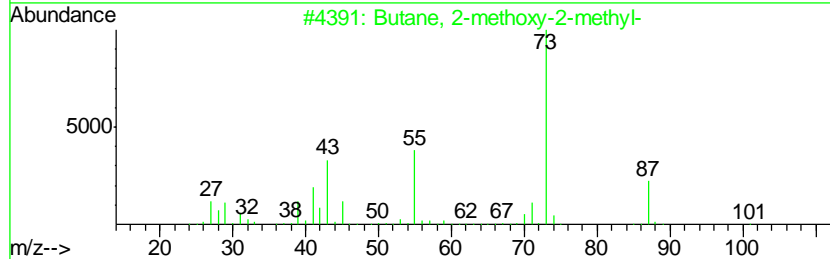
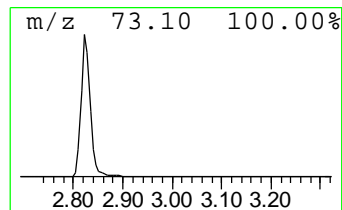
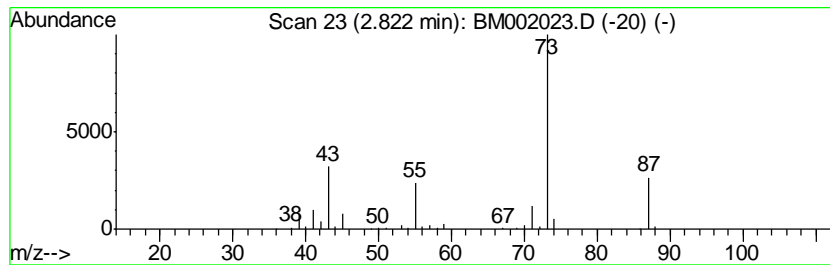
Quant Method : Z:\HPCHEM1\BNA_M\METHODS\SOM02.2-EPA-BM071315.M
 Quant Title : SVOA CALIBRATION

TIC Library : C:\DATABASE\NIST02.L
 TIC Integration Parameters: LSCINT.P

 Peak Number 1 Butane, 2-methoxy-2-methyl- Concentration Rank 7

R.T.	EstConc	Area	Relative to ISTD	R.T.
2.82	9.54 ng/ul	210164	1,4-Dichlorobenzene-d4	7.62

Hit#	of	Tentative ID	MW	MolForm	CAS#	Qual
1	5	Butane, 2-methoxy-2-methyl-	102	C6H14O	000994-05-8	83
2		Butane, 2-methoxy-2-methyl-	102	C6H14O	000994-05-8	78
3		Pentane, 3-methoxy-	102	C6H14O	036839-67-5	23
4		N-Ethylformamide	73	C3H7NO	000627-45-2	9
5		Silane, tetramethyl-	88	C4H12Si	000075-76-3	9



Data Path : Z:\HPCHEM1\BNA_M\DATA\BM072315\
 Data File : BM002023.D
 Acq On : 23 Jul 2015 19:12
 Operator : TP/UM
 Sample : G3000-18RE
 Misc :
 ALS Vial : 11 Sample Multiplier: 1

Instrument :
 BNA_M
 ClientSampled :
 C02J2RE

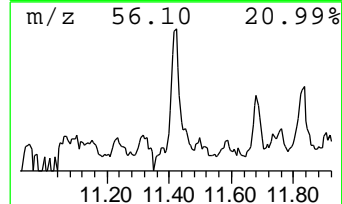
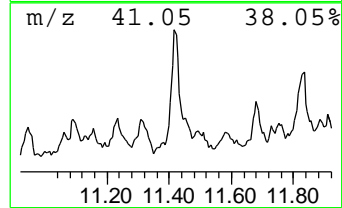
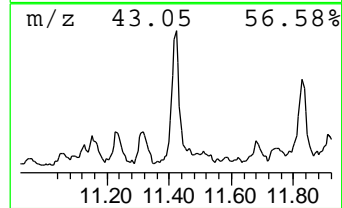
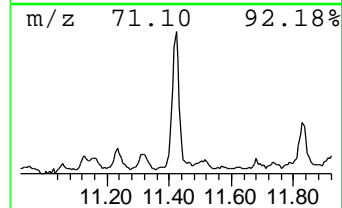
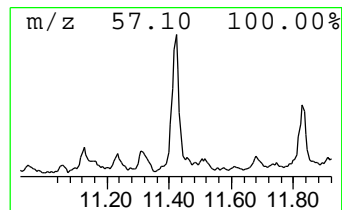
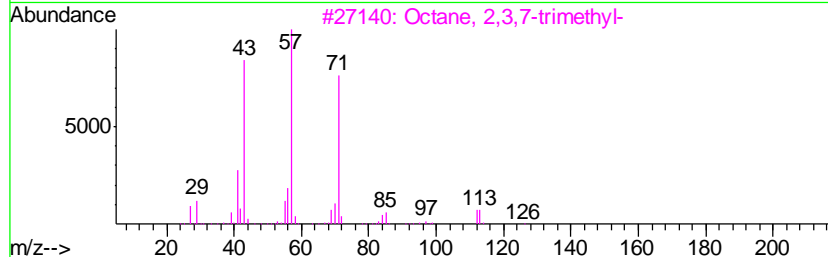
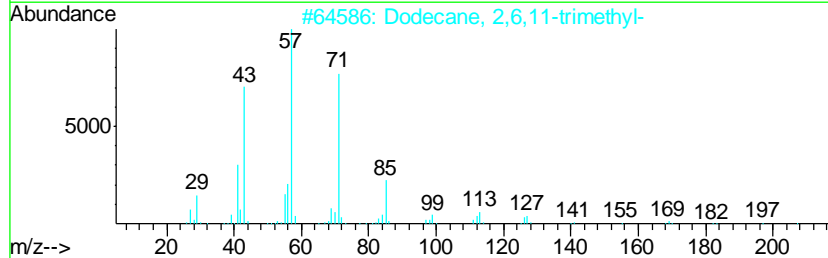
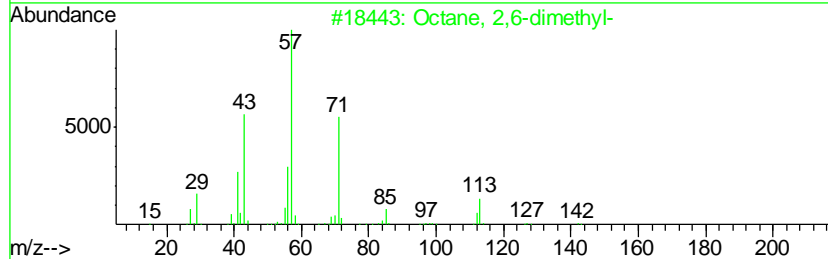
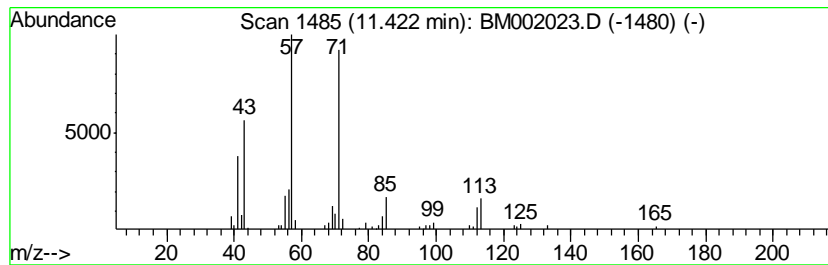
Quant Method : Z:\HPCHEM1\BNA_M\METHODS\SOM02.2-EPA-BM071315.M
 Quant Title : SVOA CALIBRATION

TIC Library : C:\DATABASE\NIST02.L
 TIC Integration Parameters: LSCINT.P

 Peak Number 2 (DEL) Alkane: Straight-Chai... Concentration Rank 11

R.T.	EstConc	Area	Relative to ISTD	R.T.
11.42	4.75 ng/ul	145836	Naphthalene-d8	10.40

Hit#	of	Tentative ID	MW	MolForm	CAS#	Qual
1	5	Octane, 2,6-dimethyl-	142	C10H22	002051-30-1	72
2		Dodecane, 2,6,11-trimethyl-	212	C15H32	031295-56-4	64
3		Octane, 2,3,7-trimethyl-	156	C11H24	062016-34-6	64
4		Octane, 2-bromo-	192	C8H17Br	000557-35-7	64
5		Heptane, 3,3,5-trimethyl-	142	C10H22	007154-80-5	59



Data Path : Z:\HPCHEM1\BNA_M\DATA\BM072315\
 Data File : BM002023.D
 Acq On : 23 Jul 2015 19:12
 Operator : TP/UM
 Sample : G3000-18RE
 Misc :
 ALS Vial : 11 Sample Multiplier: 1

Instrument :
 BNA_M
 ClientSampled :
 C02J2RE

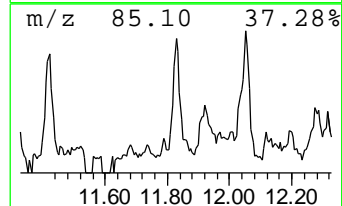
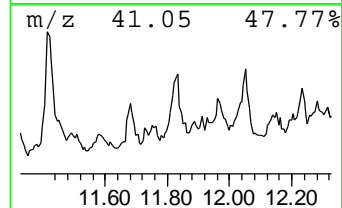
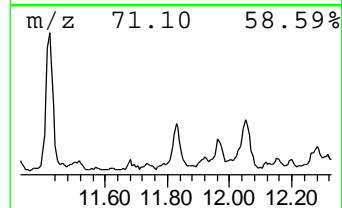
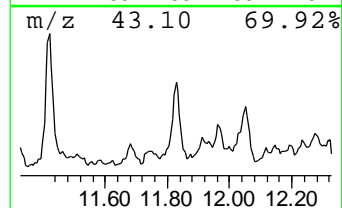
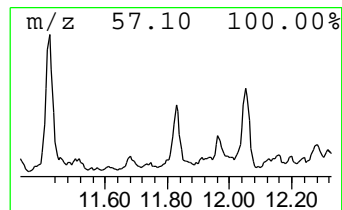
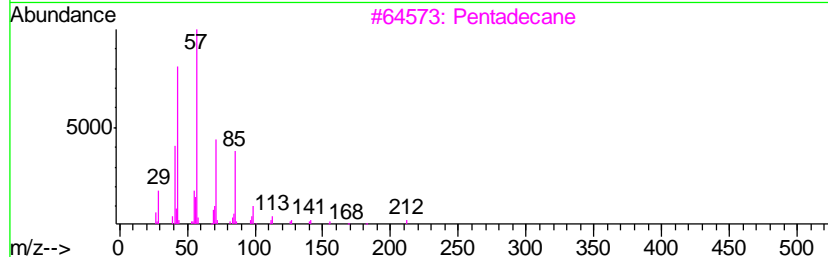
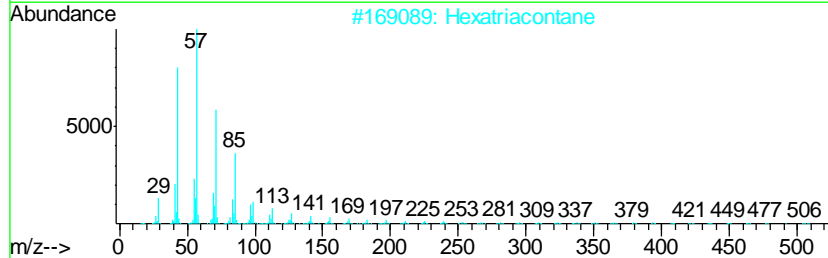
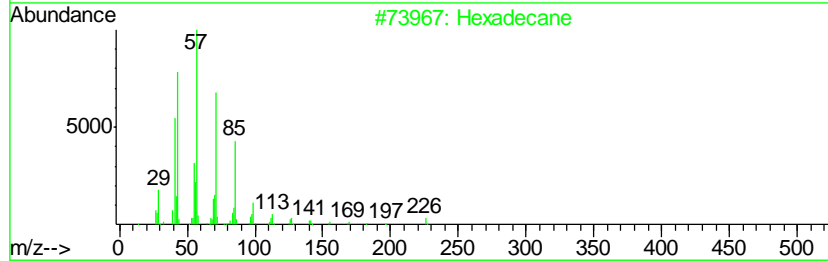
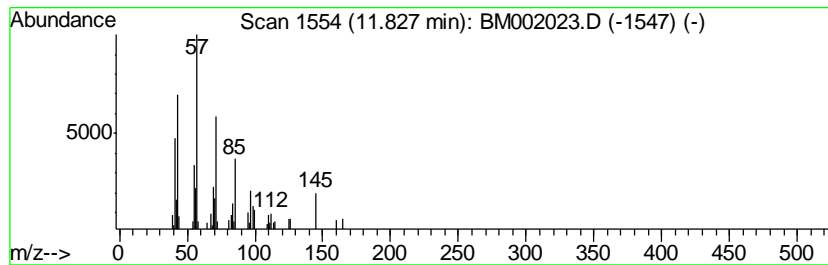
Quant Method : Z:\HPCHEM1\BNA_M\METHODS\SOM02.2-EPA-BM071315.M
 Quant Title : SVOA CALIBRATION

TIC Library : C:\DATABASE\NIST02.L
 TIC Integration Parameters: LSCINT.P

 Peak Number 3 (DEL) Alkane: Straight-Chai... Concentration Rank 15

R.T.	EstConc	Area	Relative to ISTD	R.T.
11.83	2.98 ng/ul	91725	Naphthalene-d8	10.40

Hit#	of	Tentative ID	MW	MolForm	CAS#	Qual
1	5	Hexadecane	226	C16H34	000544-76-3	50
2		Hexatriacontane	507	C36H74	000630-06-8	47
3		Pentadecane	212	C15H32	000629-62-9	47
4		Dodecane, 2,6,10-trimethyl-	212	C15H32	003891-98-3	47
5		Undecane, 2-methyl-	170	C12H26	007045-71-8	47



Data Path : Z:\HPCHEM1\BNA_M\DATA\BM072315\
 Data File : BM002023.D
 Acq On : 23 Jul 2015 19:12
 Operator : TP/UM
 Sample : G3000-18RE
 Misc :
 ALS Vial : 11 Sample Multiplier: 1

Instrument :
 BNA_M
 ClientSampleID :
 C02J2RE

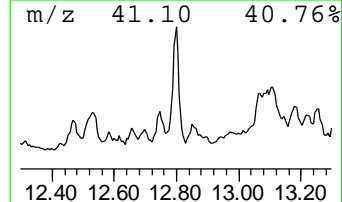
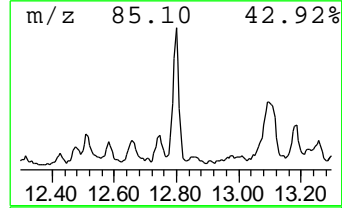
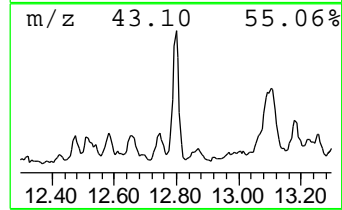
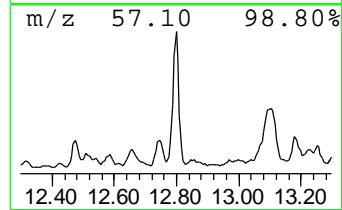
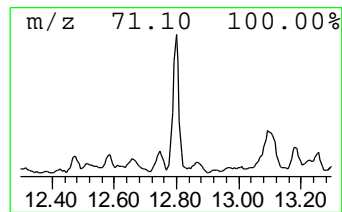
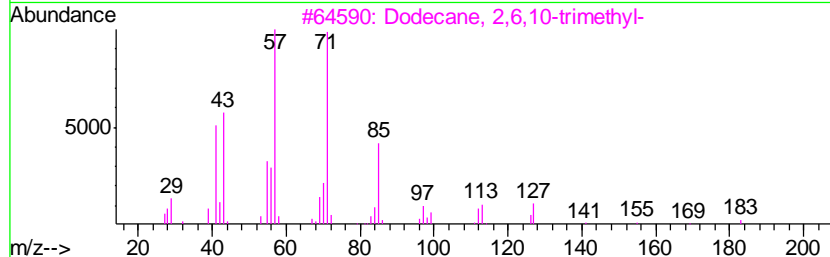
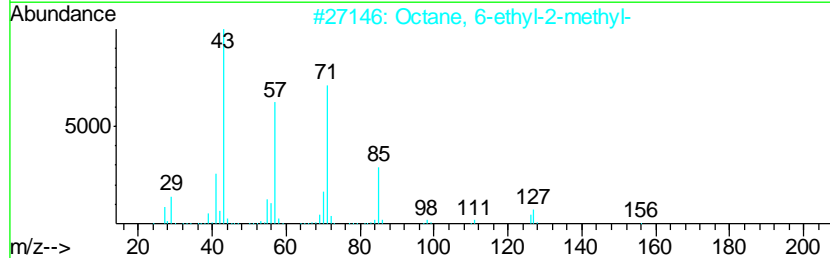
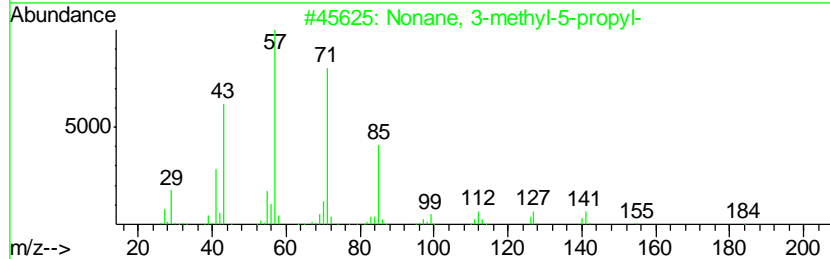
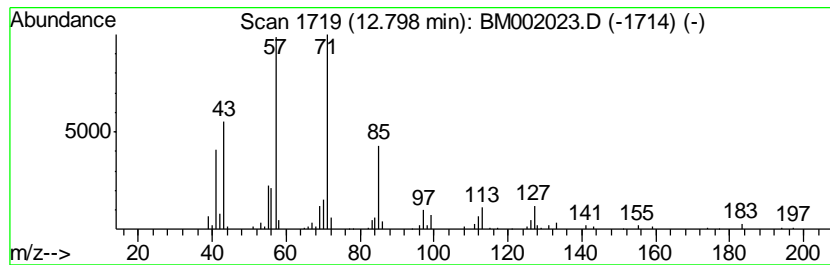
Quant Method : Z:\HPCHEM1\BNA_M\METHODS\SOM02.2-EPA-BM071315.M
 Quant Title : SVOA CALIBRATION

TIC Library : C:\DATABASE\NIST02.L
 TIC Integration Parameters: LSCINT.P

 Peak Number 4 (DEL) Alkane: Straight-Chai... Concentration Rank 10

R.T.	EstConc	Area	Relative to ISTD	R.T.
12.80	5.10 ng/ul	250919	Acenaphthene-d10	14.28

Hit#	of	Tentative ID	MW	MolForm	CAS#	Qual
1	5	Nonane, 3-methyl-5-propyl-	184	C13H28	031081-18-2	80
2		Octane, 6-ethyl-2-methyl-	156	C11H24	062016-19-7	64
3		Dodecane, 2,6,10-trimethyl-	212	C15H32	003891-98-3	58
4		Dodecane, 2,7,10-trimethyl-	212	C15H32	074645-98-0	58
5		Nonane, 5-(2-methylpropyl)-	184	C13H28	062185-53-9	53



Data Path : Z:\HPCHEM1\BNA_M\DATA\BM072315\
 Data File : BM002023.D
 Acq On : 23 Jul 2015 19:12
 Operator : TP/UM
 Sample : G3000-18RE
 Misc :
 ALS Vial : 11 Sample Multiplier: 1

Instrument :
 BNA_M
 ClientSampled :
 C02J2RE

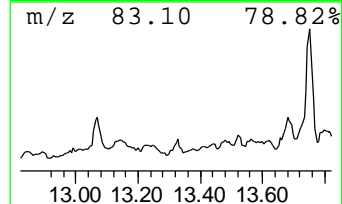
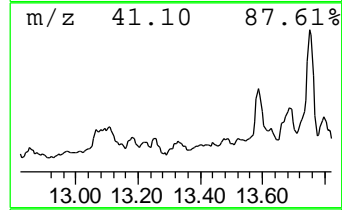
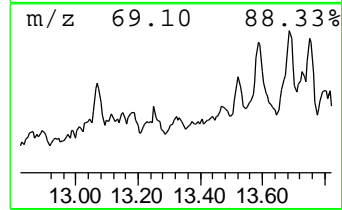
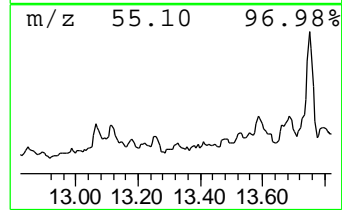
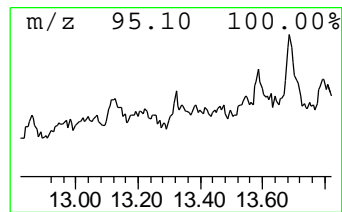
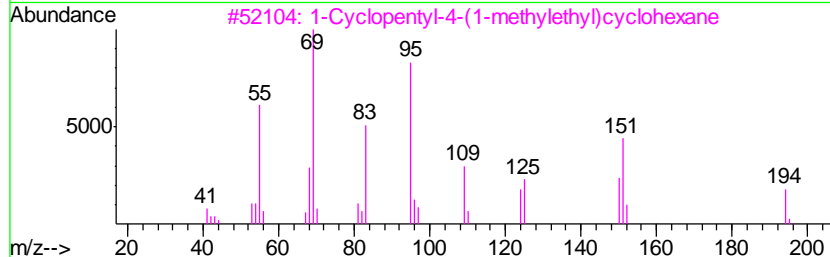
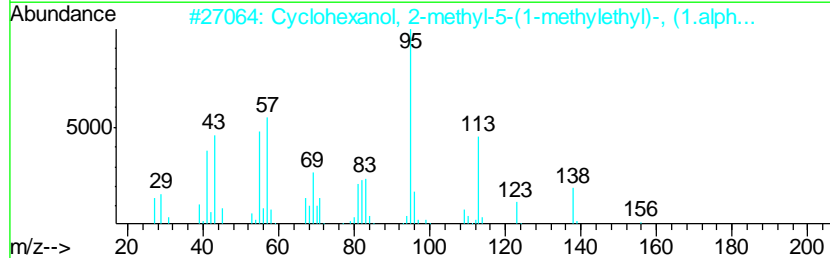
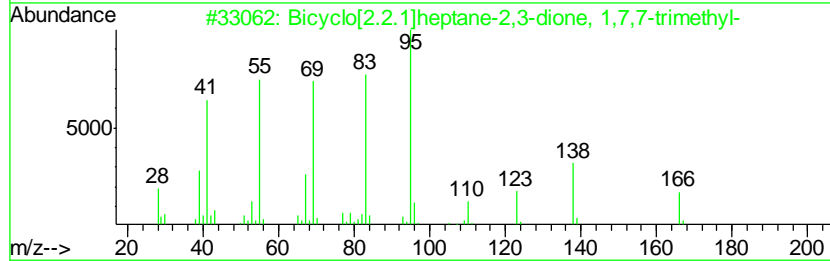
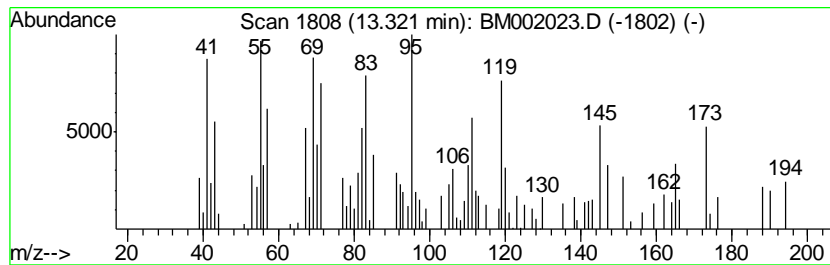
Quant Method : Z:\HPCHEM1\BNA_M\METHODS\SOM02.2-EPA-BM071315.M
 Quant Title : SVOA CALIBRATION

TIC Library : C:\DATABASE\NIST02.L
 TIC Integration Parameters: LSCINT.P

 Peak Number 5 unknown-01 Concentration Rank 16

R.T.	EstConc	Area	Relative to ISTD	R.T.
13.32	2.16 ng/ul	106113	Acenaphthene-d10	14.28

Hit#	of	Tentative ID	MW	MolForm	CAS#	Qual
1	5	Bicyclo[2.2.1]heptane-2,3-dione,...	166	C10H14O2	000465-29-2	35
2		Cyclohexanol, 2-methyl-5-(1-meth...	156	C10H20O	000499-69-4	30
3		1-Cyclopentyl-4-(1-methylethyl)c...	194	C14H26	1000215-44-4	25
4		Cyclohexanol, 2-methyl-5-(1-meth...	156	C10H20O	042846-32-2	22
5		Bicyclo[2.2.1]heptane-2,3-dione,...	166	C10H14O2	000465-29-2	20



Data Path : Z:\HPCHEM1\BNA_M\DATA\BM072315\
 Data File : BM002023.D
 Acq On : 23 Jul 2015 19:12
 Operator : TP/UM
 Sample : G3000-18RE
 Misc :
 ALS Vial : 11 Sample Multiplier: 1

Instrument :
 BNA_M
 ClientSampleID :
 C02J2RE

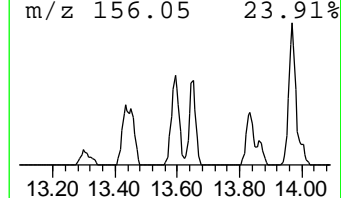
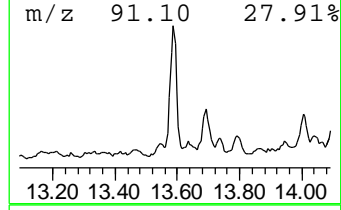
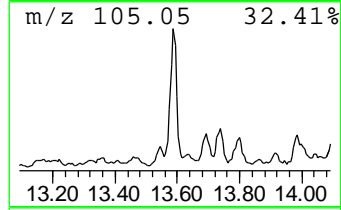
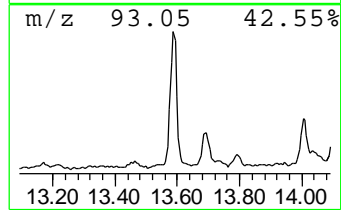
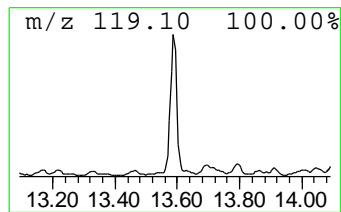
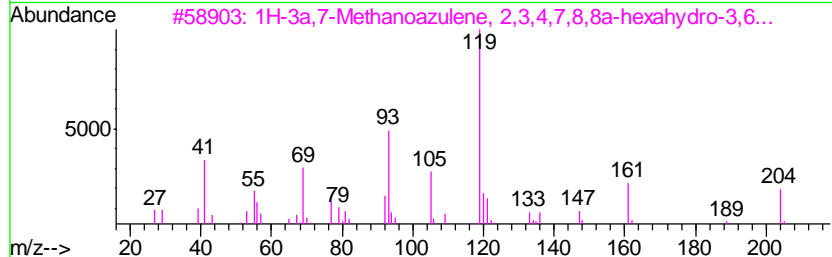
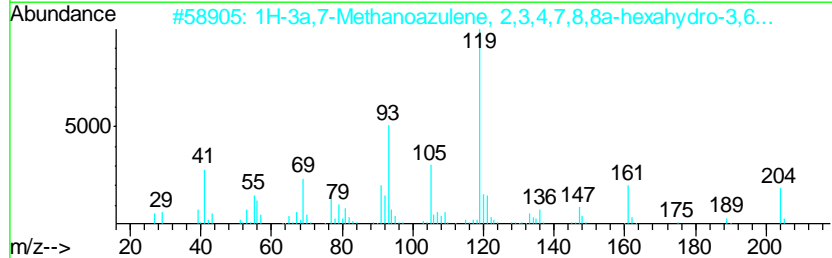
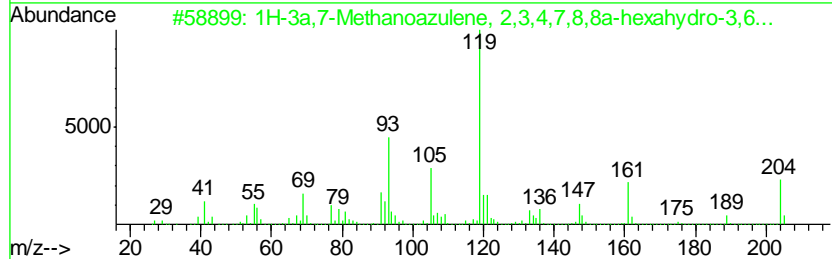
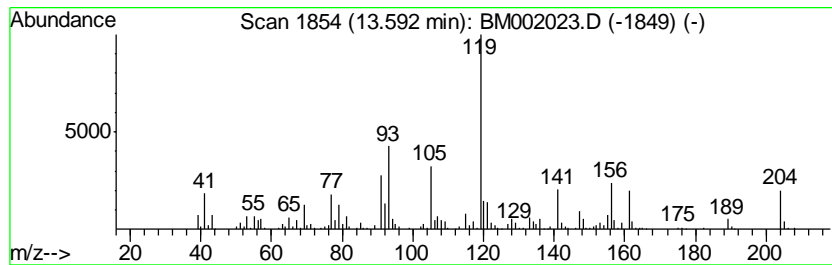
Quant Method : Z:\HPCHEM1\BNA_M\METHODS\SOM02.2-EPA-BM071315.M
 Quant Title : SVOA CALIBRATION

TIC Library : C:\DATABASE\NIST02.L
 TIC Integration Parameters: LSCINT.P

 Peak Number 6 1H-3a,7-Methanoazulene, 2,3... Concentration Rank 6

R.T.	EstConc	Area	Relative to ISTD	R.T.
13.59	10.32 ng/ul	507895	Acenaphthene-d10	14.28

Hit#	of	Tentative ID	MW	MolForm	CAS#	Qual
1	5	1H-3a,7-Methanoazulene, 2,3,4,7,...	204	C15H24	000469-61-4	99
2		1H-3a,7-Methanoazulene, 2,3,4,7,...	204	C15H24	000469-61-4	99
3		1H-3a,7-Methanoazulene, 2,3,4,7,...	204	C15H24	000469-61-4	98
4		1H-3a,7-Methanoazulene, 2,3,4,7,...	204	C15H24	000469-61-4	97
5		1H-Benzocycloheptene, 2,4a,5,6,7...	204	C15H24	001461-03-6	53



Data Path : Z:\HPCHEM1\BNA_M\DATA\BM072315\
 Data File : BM002023.D
 Acq On : 23 Jul 2015 19:12
 Operator : TP/UM
 Sample : G3000-18RE
 Misc :
 ALS Vial : 11 Sample Multiplier: 1

Instrument :
 BNA_M
 ClientSampleId :
 C02J2RE

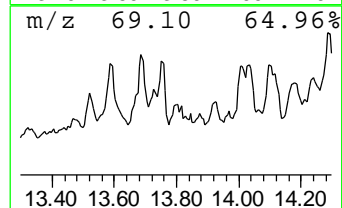
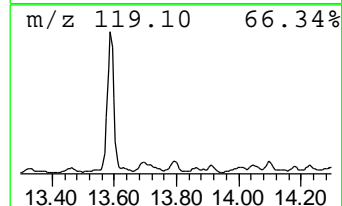
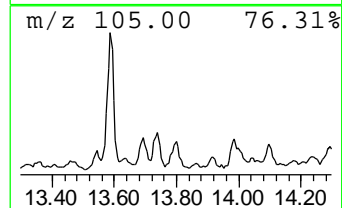
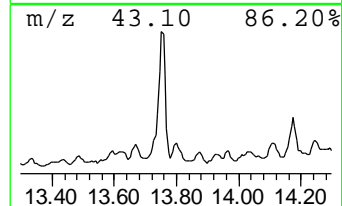
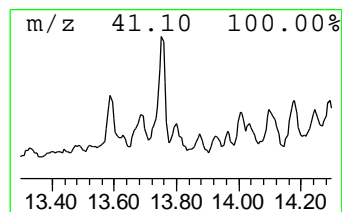
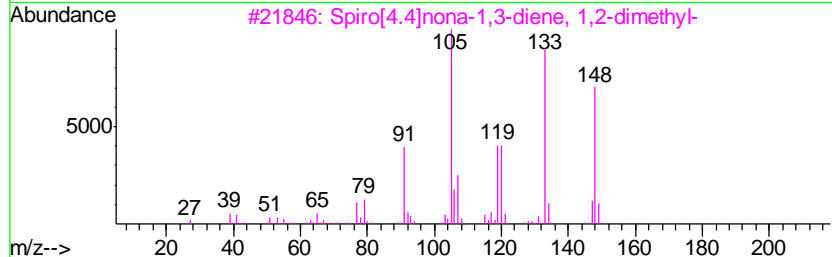
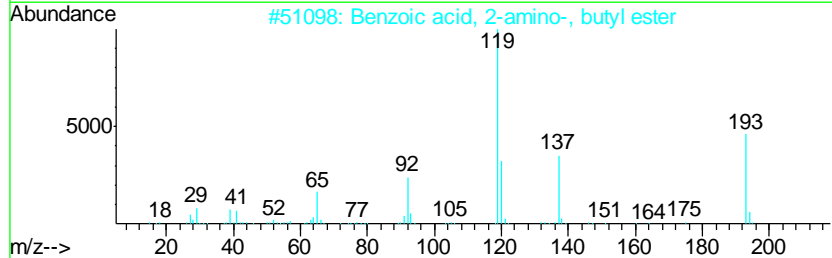
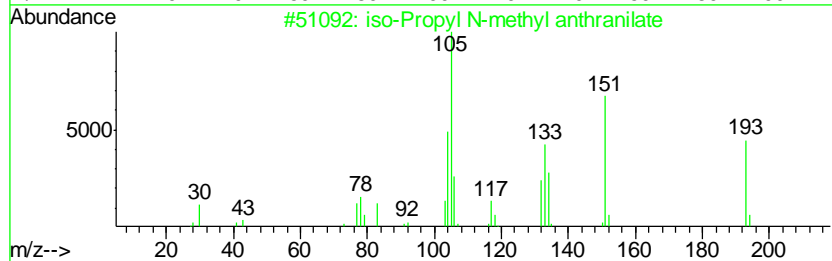
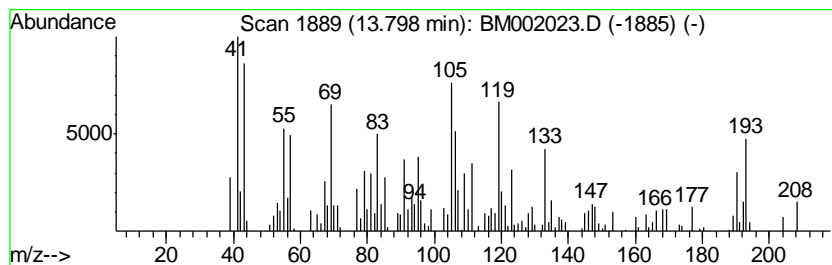
Quant Method : Z:\HPCHEM1\BNA_M\METHODS\SOM02.2-EPA-BM071315.M
 Quant Title : SVOA CALIBRATION

TIC Library : C:\DATABASE\NIST02.L
 TIC Integration Parameters: LSCINT.P

 Peak Number 7 unknown-02 Concentration Rank 14

R.T.	EstConc	Area	Relative to ISTD	R.T.
13.80	3.20 ng/ul	157549	Acenaphthene-d10	14.28

Hit#	of	Tentative ID	MW	MolForm	CAS#	Qual
1	5	iso-Propyl N-methyl anthranilate	193	C11H15NO2	099985-64-5	25
2		Benzoic acid, 2-amino-, butyl ester	193	C11H15NO2	007756-96-9	22
3		Spiro[4.4]nona-1,3-diene, 1,2-di...	148	C11H16	1000163-57-6	18
4		Thujopsene	204	C15H24	000470-40-6	18
5		Bicyclo[7.2.0]undec-4-ene, 4,11,...	204	C15H24	000118-65-0	15



Data Path : Z:\HPCHEM1\BNA_M\DATA\BM072315\
 Data File : BM002023.D
 Acq On : 23 Jul 2015 19:12
 Operator : TP/UM
 Sample : G3000-18RE
 Misc :
 ALS Vial : 11 Sample Multiplier: 1

Instrument :
 BNA_M
 ClientSampled :
 C02J2RE

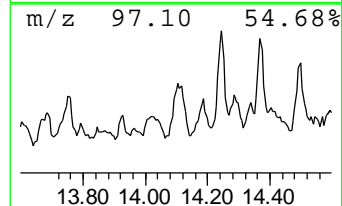
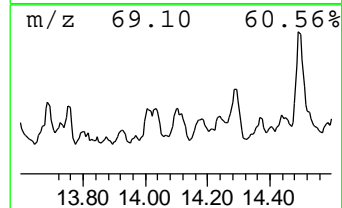
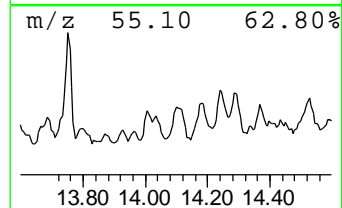
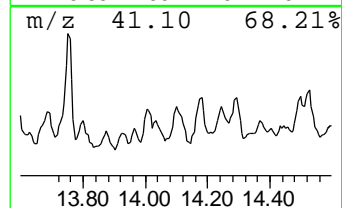
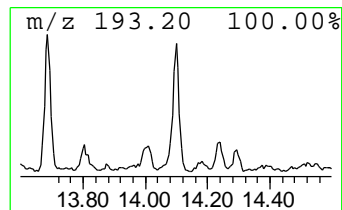
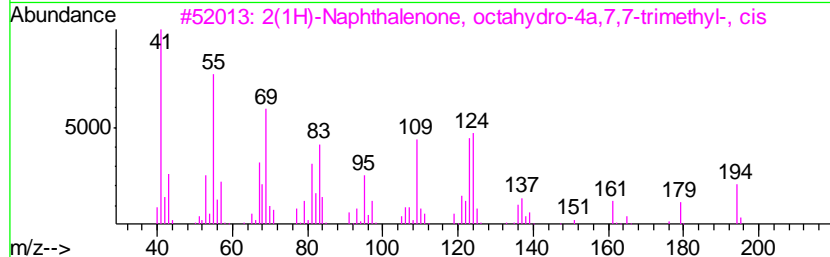
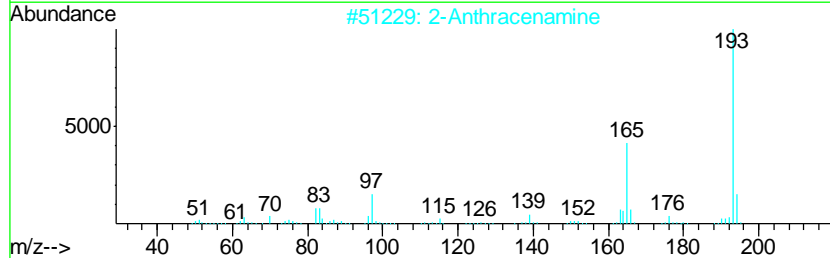
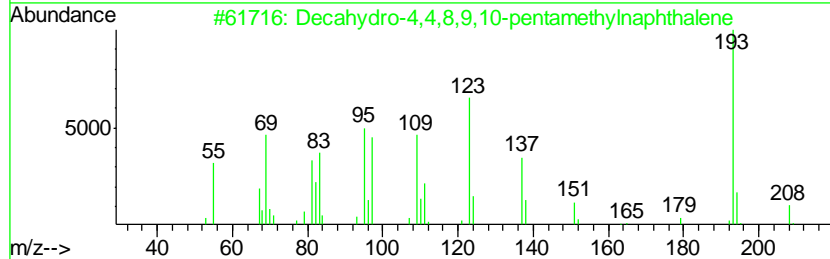
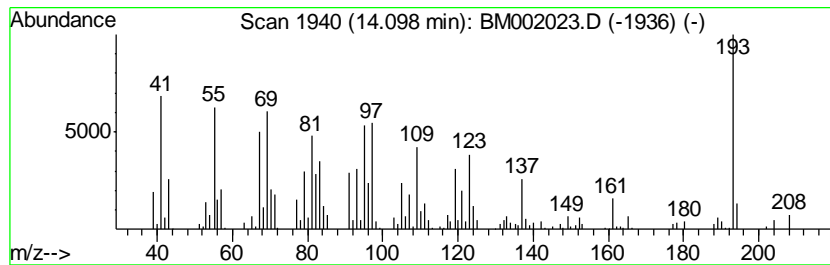
Quant Method : Z:\HPCHEM1\BNA_M\METHODS\SOM02.2-EPA-BM071315.M
 Quant Title : SVOA CALIBRATION

TIC Library : C:\DATABASE\NIST02.L
 TIC Integration Parameters: LSCINT.P

 Peak Number 8 unknown-03 Concentration Rank 9

R.T.	EstConc	Area	Relative to ISTD	R.T.
14.10	5.81 ng/ul	285654	Acenaphthene-d10	14.28

Hit#	of	Tentative ID	MW	MolForm	CAS#	Qual
1	5	Decahydro-4,4,8,9,10-pentamethyl...	208	C15H28	080655-44-3	43
2		2-Anthracenamine	193	C14H11N	000613-13-8	38
3		2(1H)-Naphthalenone, octahydro-4...	194	C13H22O	007056-56-6	35
4		Cyclohexane, 1-(cyclohexylmethyl...	194	C14H26	054823-96-0	25
5		Cyclohexane, 1-(cyclohexylmethyl...	194	C14H26	054823-98-2	25



Data Path : Z:\HPCHEM1\BNA_M\DATA\BM072315\
 Data File : BM002023.D
 Acq On : 23 Jul 2015 19:12
 Operator : TP/UM
 Sample : G3000-18RE
 Misc :
 ALS Vial : 11 Sample Multiplier: 1

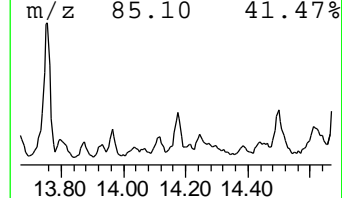
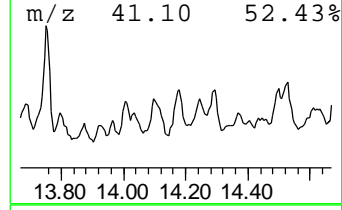
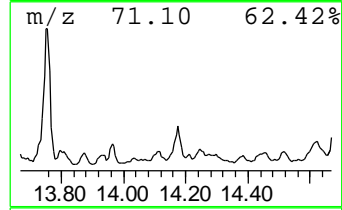
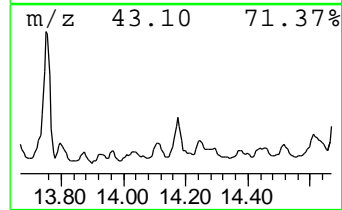
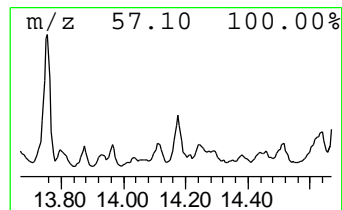
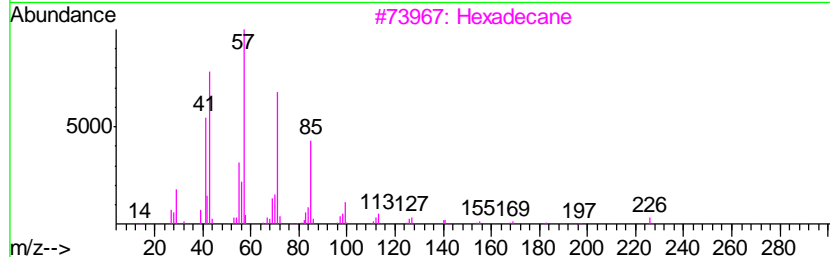
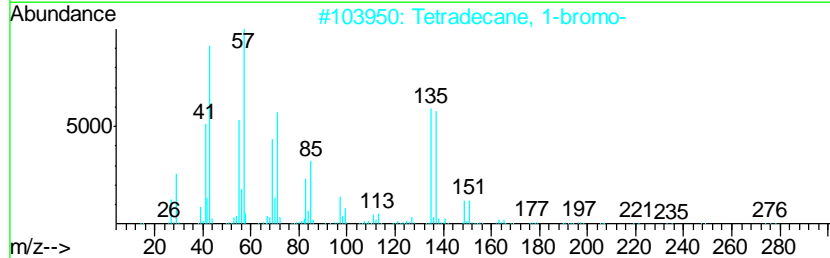
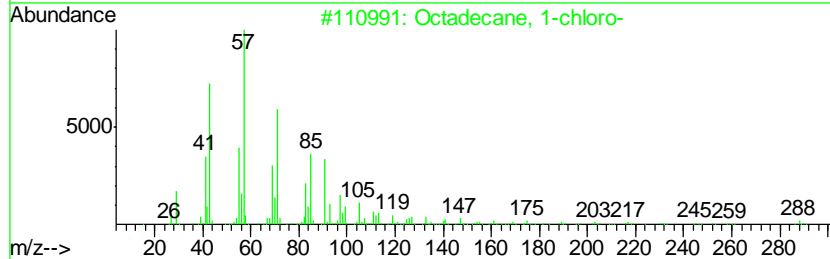
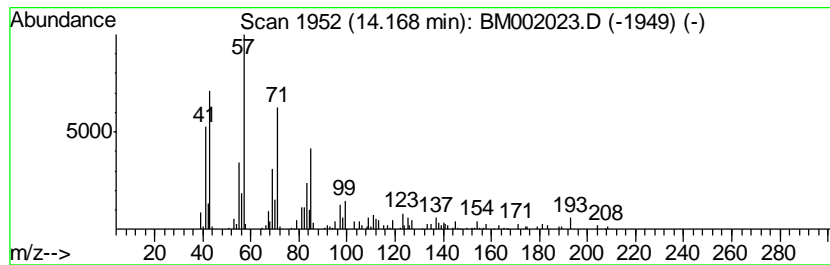
Instrument :
 BNA_M
 ClientSampleID :
 C02J2RE

Quant Method : Z:\HPCHEM1\BNA_M\METHODS\SOM02.2-EPA-BM071315.M
 Quant Title : SVOA CALIBRATION

TIC Library : C:\DATABASE\NIST02.L
 TIC Integration Parameters: LSCINT.P

 Peak Number 9 Octadecane, 1-chloro- Concentration Rank 12

R.T.	EstConc	Area	Relative to ISTD	R.T.
14.17	3.92 ng/ul	192716	Acenaphthene-d10	14.28
Hit# of	5	Tentative ID	MW MolForm	CAS# Qual
1		Octadecane, 1-chloro-	288 C18H37Cl	003386-33-2 87
2		Tetradecane, 1-bromo-	276 C14H29Br	000112-71-0 86
3		Hexadecane	226 C16H34	000544-76-3 68
4		Nonadecane	268 C19H40	000629-92-5 64
5		Hexadecane, 1-chloro-	260 C16H33Cl	004860-03-1 64



Data Path : Z:\HPCHEM1\BNA_M\DATA\BM072315\
 Data File : BM002023.D
 Acq On : 23 Jul 2015 19:12
 Operator : TP/UM
 Sample : G3000-18RE
 Misc :
 ALS Vial : 11 Sample Multiplier: 1

Instrument :
 BNA_M
 ClientSampled :
 C02J2RE

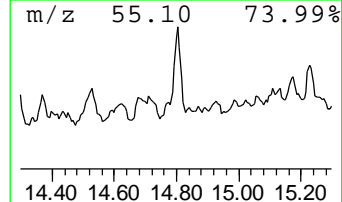
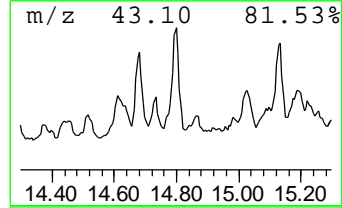
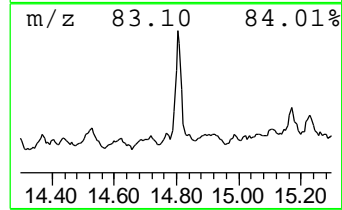
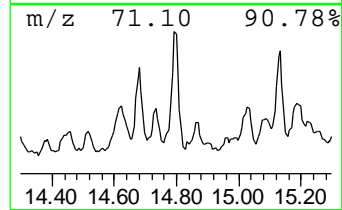
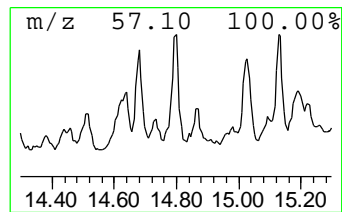
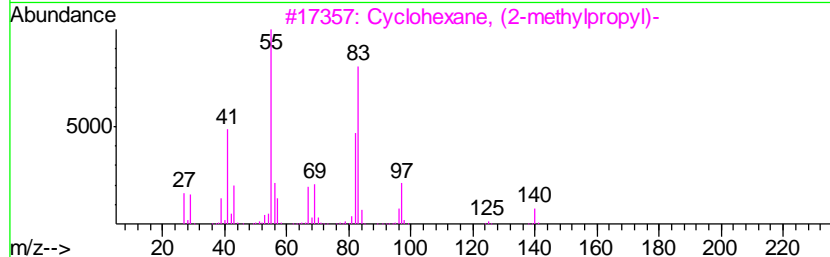
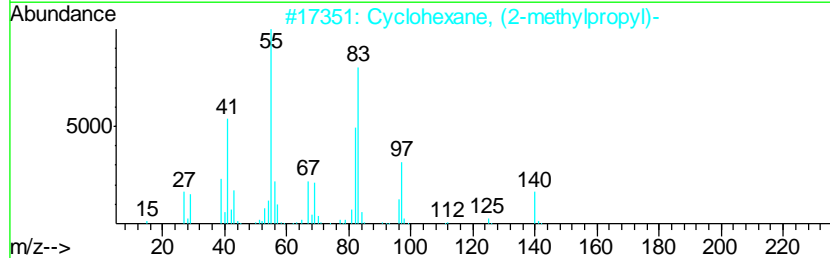
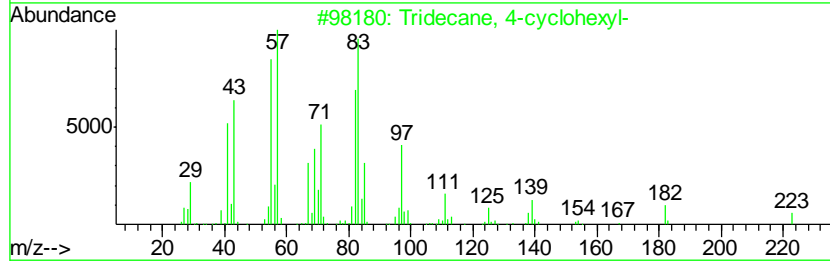
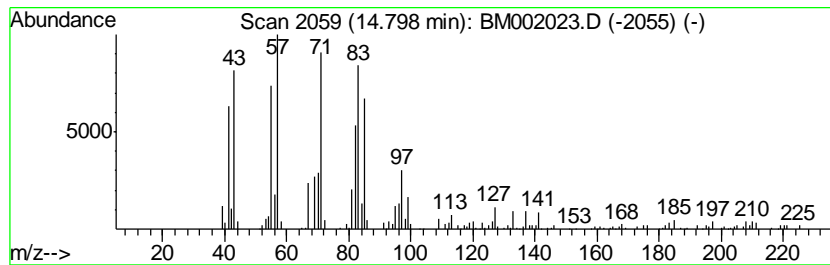
Quant Method : Z:\HPCHEM1\BNA_M\METHODS\SOM02.2-EPA-BM071315.M
 Quant Title : SVOA CALIBRATION

TIC Library : C:\DATABASE\NIST02.L
 TIC Integration Parameters: LSCINT.P

 Peak Number 10 (DEL) Alkane: Cyclic14.80 Concentration Rank 8

R.T.	EstConc	Area	Relative to ISTD	R.T.
14.80	5.92 ng/ul	291372	Acenaphthene-d10	14.28

Hit#	of	Tentative ID	MW	MolForm	CAS#	Qual
1	5	Tridecane, 4-cyclohexyl-	266	C19H38	013151-89-8	50
2		Cyclohexane, (2-methylpropyl)-	140	C10H20	001678-98-4	46
3		Cyclohexane, (2-methylpropyl)-	140	C10H20	001678-98-4	41
4		10-Methylnonadecane	282	C20H42	056862-62-5	38
5		Nonadecane	268	C19H40	000629-92-5	38



Data Path : Z:\HPCHEM1\BNA_M\DATA\BM072315\
 Data File : BM002023.D
 Acq On : 23 Jul 2015 19:12
 Operator : TP/UM
 Sample : G3000-18RE
 Misc :
 ALS Vial : 11 Sample Multiplier: 1

Instrument :
 BNA_M
 ClientSampleID :
 C02J2RE

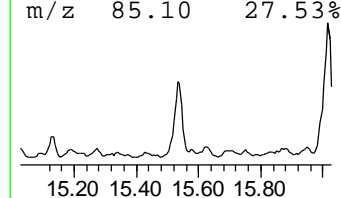
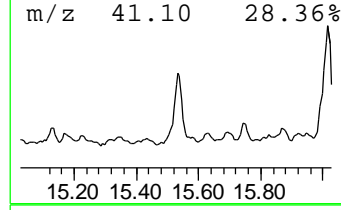
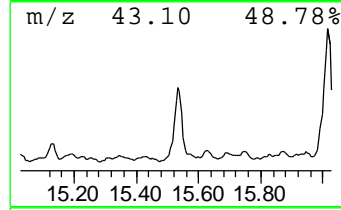
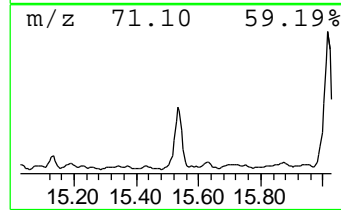
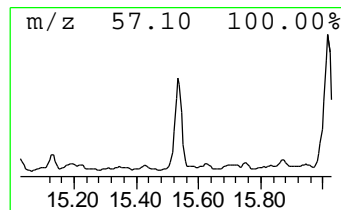
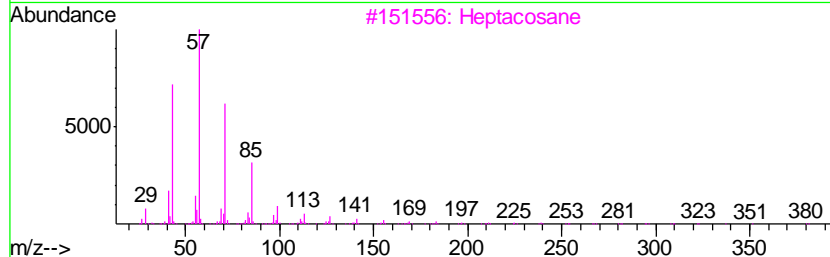
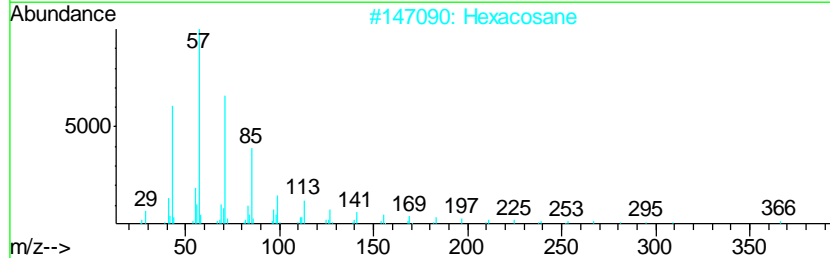
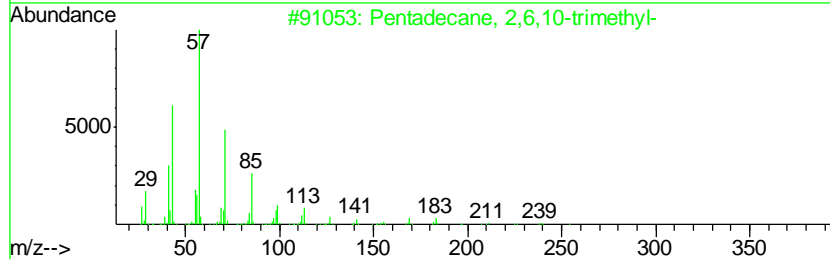
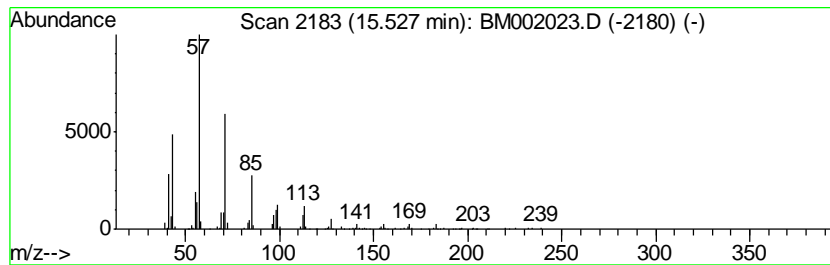
Quant Method : Z:\HPCHEM1\BNA_M\METHODS\SOM02.2-EPA-BM071315.M
 Quant Title : SVOA CALIBRATION

TIC Library : C:\DATABASE\NIST02.L
 TIC Integration Parameters: LSCINT.P

 Peak Number 11 (DEL) Alkane: Straight-Chai... Concentration Rank 4

R.T.	EstConc	Area	Relative to ISTD	R.T.
15.53	19.71 ng/ul	969592	Acenaphthene-d10	14.28

Hit#	of	Tentative ID	MW	MolForm	CAS#	Qual
1	5	Pentadecane, 2,6,10-trimethyl-	254	C18H38	003892-00-0	90
2		Hexacosane	366	C26H54	000630-01-3	86
3		Heptacosane	380	C27H56	000593-49-7	72
4		Pentadecane, 8-heptyl-	310	C22H46	071005-15-7	72
5		Decane, 2-methyl-	156	C11H24	006975-98-0	68



Data Path : Z:\HPCHEM1\BNA_M\DATA\BM072315\
 Data File : BM002023.D
 Acq On : 23 Jul 2015 19:12
 Operator : TP/UM
 Sample : G3000-18RE
 Misc :
 ALS Vial : 11 Sample Multiplier: 1

Instrument :
 BNA_M
 ClientSampleID :
 C02J2RE

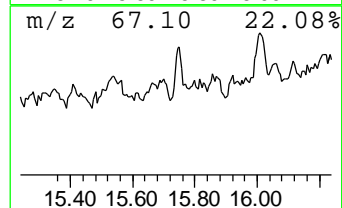
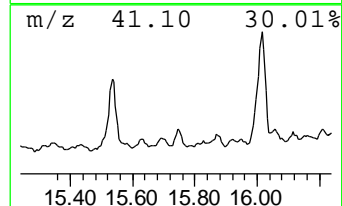
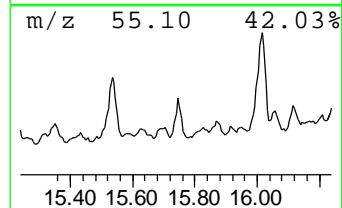
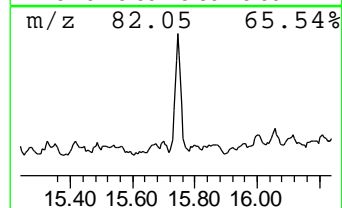
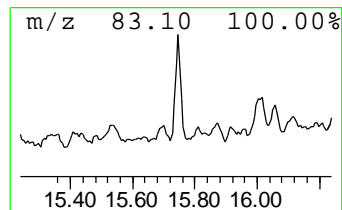
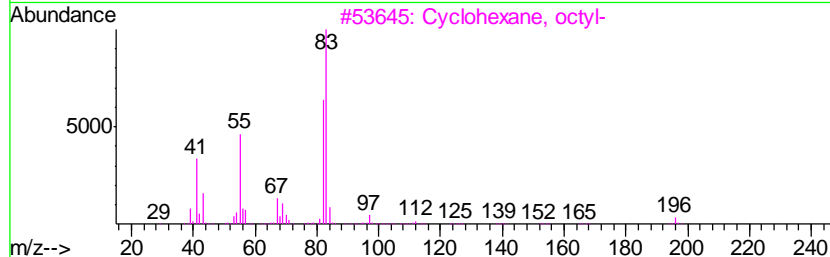
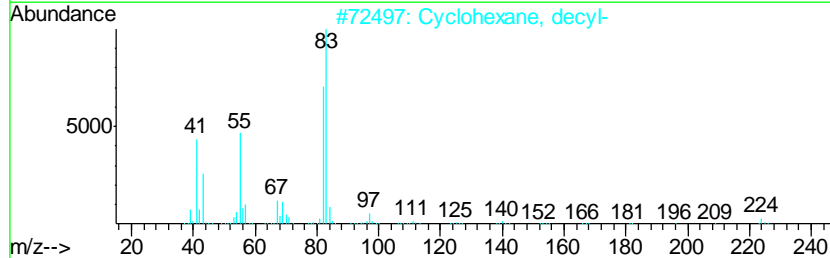
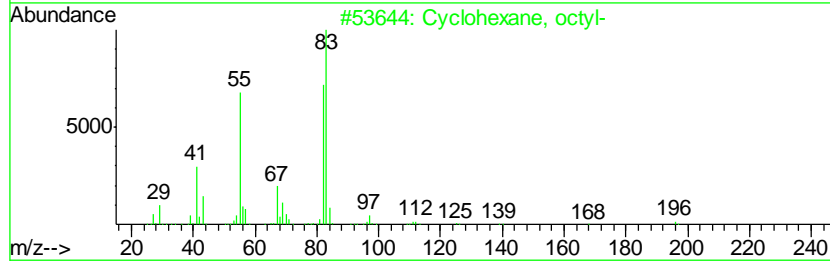
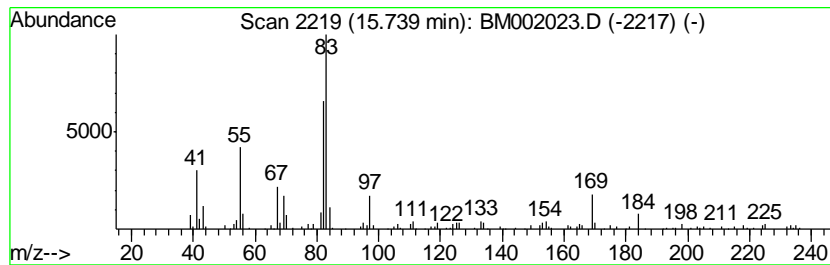
Quant Method : Z:\HPCHEM1\BNA_M\METHODS\SOM02.2-EPA-BM071315.M
 Quant Title : SVOA CALIBRATION

TIC Library : C:\DATABASE\NIST02.L
 TIC Integration Parameters: LSCINT.P

 Peak Number 12 (DEL) Alkane: Cyclic15.74 Concentration Rank 13

R.T.	EstConc	Area	Relative to ISTD	R.T.
15.74	3.29 ng/ul	177766	Phenanthrene-d10	17.03

Hit#	of	Tentative ID	MW	MolForm	CAS#	Qual
1	5	Cyclohexane, octyl-	196	C14H28	001795-15-9	74
2		Cyclohexane, decyl-	224	C16H32	001795-16-0	74
3		Cyclohexane, octyl-	196	C14H28	001795-15-9	72
4		Cyclohexane, pentyl-	154	C11H22	004292-92-6	72
5		Cyclohexane, 2-propenyl-	124	C9H16	002114-42-3	68



Data Path : Z:\HPCHEM1\BNA_M\DATA\BM072315\
 Data File : BM002023.D
 Acq On : 23 Jul 2015 19:12
 Operator : TP/UM
 Sample : G3000-18RE
 Misc :
 ALS Vial : 11 Sample Multiplier: 1

Instrument :
 BNA_M
 ClientSampleID :
 C02J2RE

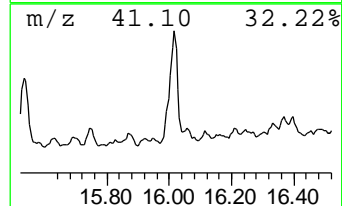
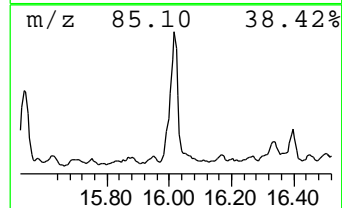
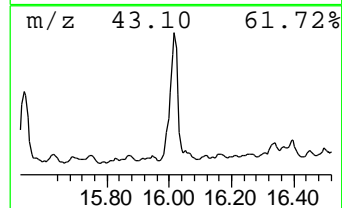
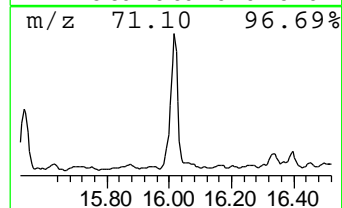
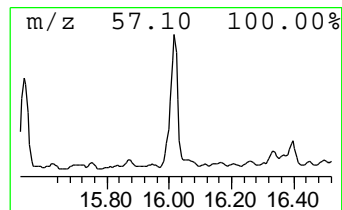
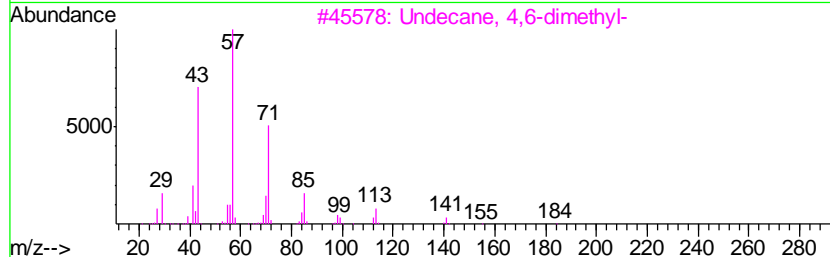
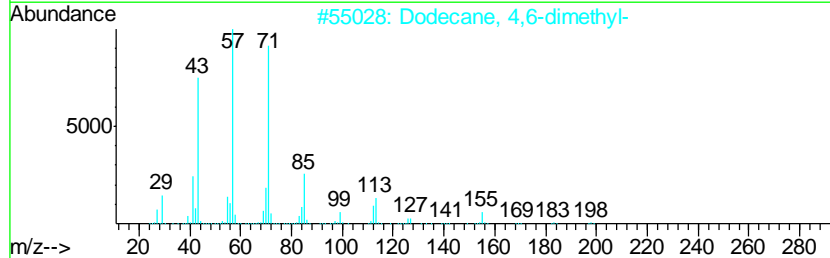
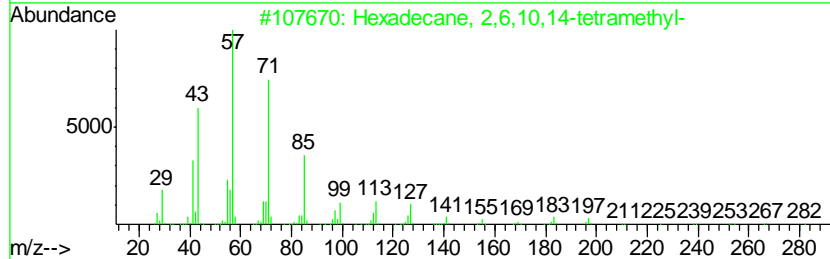
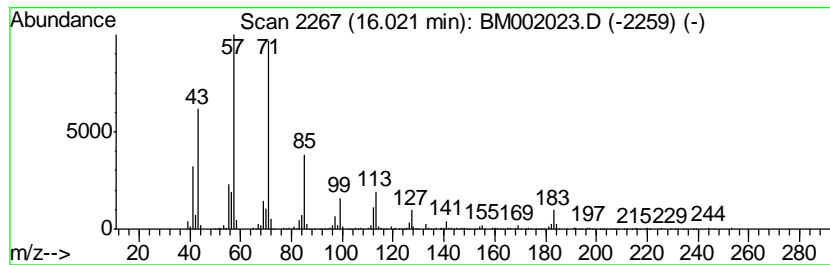
Quant Method : Z:\HPCHEM1\BNA_M\METHODS\SOM02.2-EPA-BM071315.M
 Quant Title : SVOA CALIBRATION

TIC Library : C:\DATABASE\NIST02.L
 TIC Integration Parameters: LSCINT.P

 Peak Number 13 (DEL) Alkane: Straight-Chai... Concentration Rank 1

R.T.	EstConc	Area	Relative to ISTD	R.T.
16.02	32.53 ng/ul	1759430	Phenanthrene-d10	17.03

Hit#	of	Tentative ID	MW	MolForm	CAS#	Qual
1	5	Hexadecane, 2,6,10,14-tetramethyl-	282	C20H42	000638-36-8	86
2		Dodecane, 4,6-dimethyl-	198	C14H30	061141-72-8	83
3		Undecane, 4,6-dimethyl-	184	C13H28	017312-82-2	80
4		Dodecane, 2,6,11-trimethyl-	212	C15H32	031295-56-4	80
5		Pentadecane, 2,6,10,14-tetramethyl-	268	C19H40	001921-70-6	80



Data Path : Z:\HPCHEM1\BNA_M\DATA\BM072315\
 Data File : BM002023.D
 Acq On : 23 Jul 2015 19:12
 Operator : TP/UM
 Sample : G3000-18RE
 Misc :
 ALS Vial : 11 Sample Multiplier: 1

Instrument :
 BNA_M
 ClientSampleID :
 C02J2RE

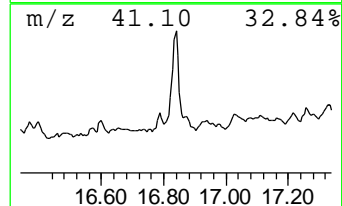
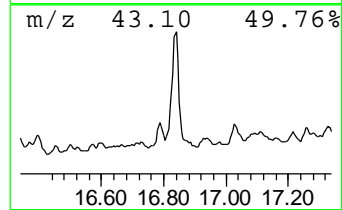
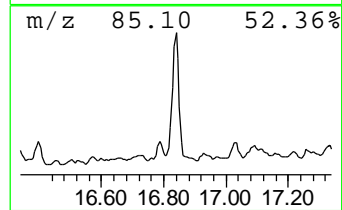
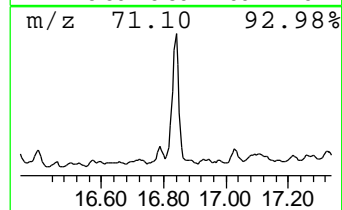
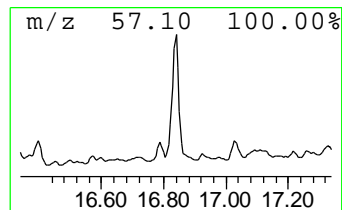
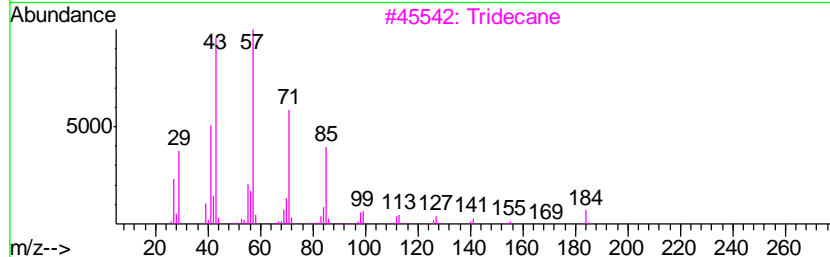
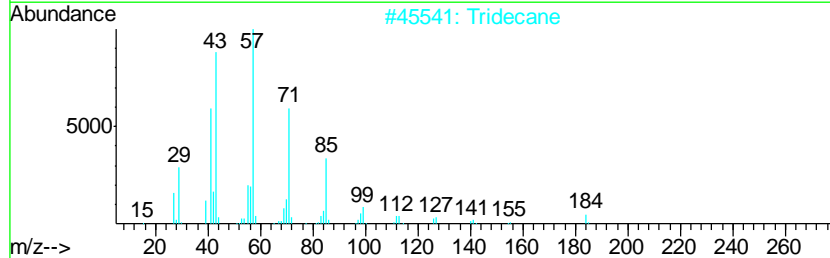
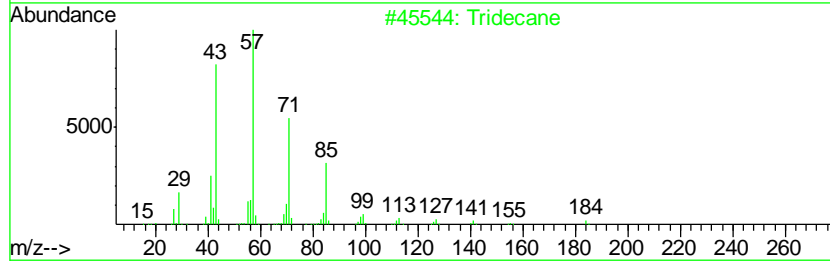
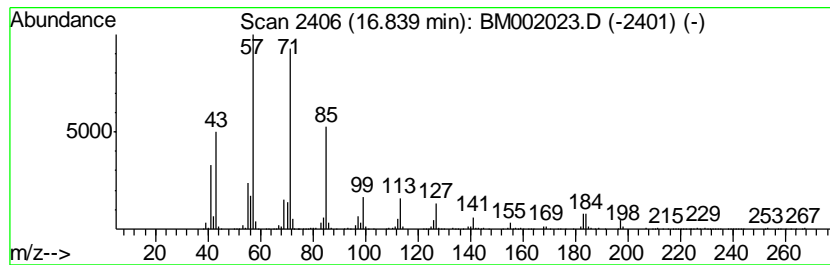
Quant Method : Z:\HPCHEM1\BNA_M\METHODS\SOM02.2-EPA-BM071315.M
 Quant Title : SVOA CALIBRATION

TIC Library : C:\DATABASE\NIST02.L
 TIC Integration Parameters: LSCINT.P

 Peak Number 14 (DEL) Alkane: Straight-Chai... Concentration Rank 2

R.T.	EstConc	Area	Relative to ISTD	R.T.
16.84	22.91 ng/ul	1239320	Phenanthrene-d10	17.03

Hit#	of	Tentative ID	MW	MolForm	CAS#	Qual
1	5	Tridecane	184	C13H28	000629-50-5	90
2		Tridecane	184	C13H28	000629-50-5	87
3		Tridecane	184	C13H28	000629-50-5	87
4		Heptadecane, 2,6,10,15-tetramethyl-	296	C21H44	054833-48-6	87
5		Hexadecane, 2,6,10,14-tetramethyl-	282	C20H42	000638-36-8	83



Data Path : Z:\HPCHEM1\BNA_M\DATA\BM072315\
 Data File : BM002023.D
 Acq On : 23 Jul 2015 19:12
 Operator : TP/UM
 Sample : G3000-18RE
 Misc :
 ALS Vial : 11 Sample Multiplier: 1

Instrument :
 BNA_M
 ClientSampleID :
 C02J2RE

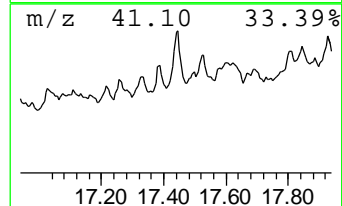
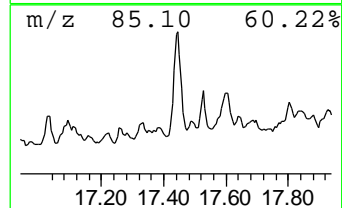
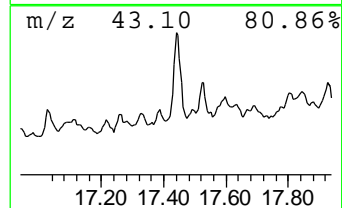
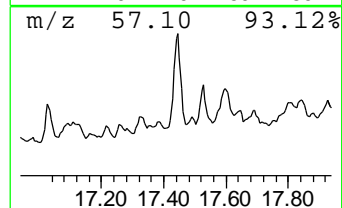
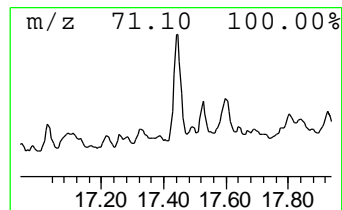
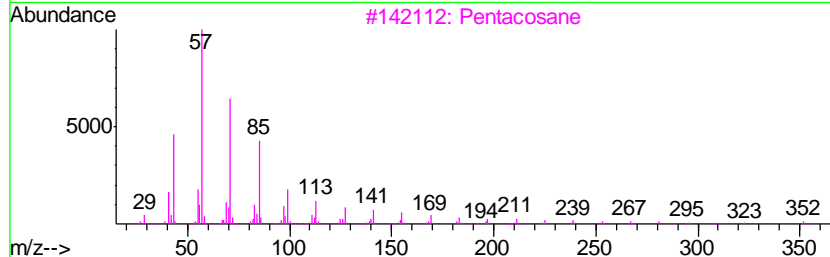
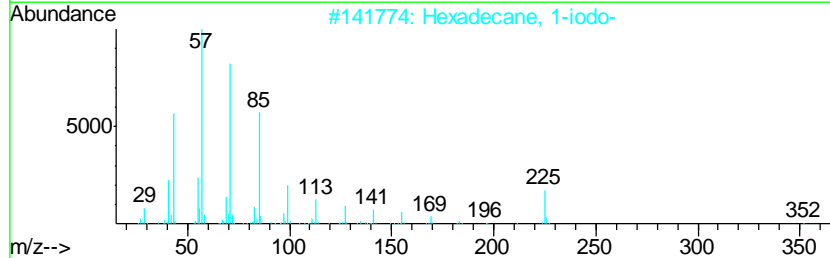
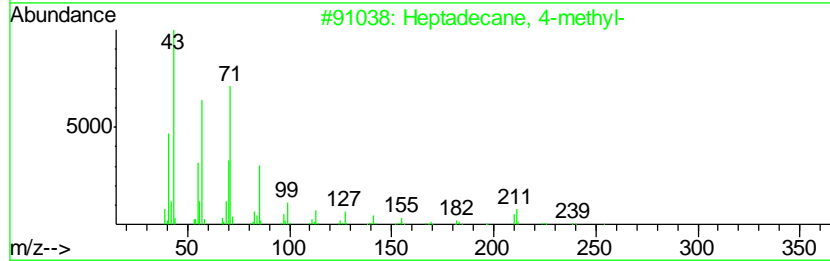
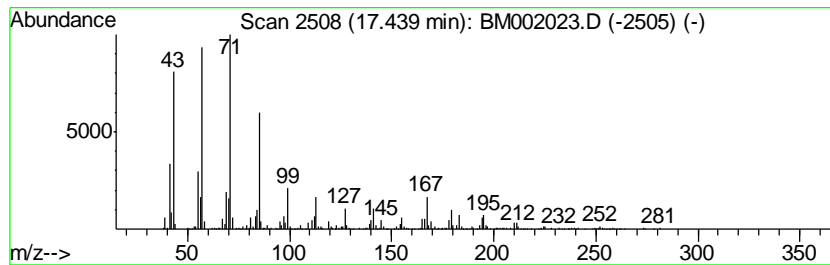
Quant Method : Z:\HPCHEM1\BNA_M\METHODS\SOM02.2-EPA-BM071315.M
 Quant Title : SVOA CALIBRATION

TIC Library : C:\DATABASE\NIST02.L
 TIC Integration Parameters: LSCINT.P

 Peak Number 15 (DEL) Alkane: Straight-Chai... Concentration Rank 5

R.T.	EstConc	Area	Relative to ISTD	R.T.
17.44	12.47 ng/ul	674765	Phenanthrene-d10	17.03

Hit#	of	Tentative ID	MW	MolForm	CAS#	Qual
1	5	Heptadecane, 4-methyl-	254	C18H38	026429-11-8	87
2		Hexadecane, 1-iodo-	352	C16H33I	000544-77-4	83
3		Pentacosane	352	C25H52	000629-99-2	80
4		Hexadecane	226	C16H34	000544-76-3	80
5		Octacosane	394	C28H58	000630-02-4	80



Data Path : Z:\HPCHEM1\BNA_M\DATA\BM072315\
 Data File : BM002023.D
 Acq On : 23 Jul 2015 19:12
 Operator : TP/UM
 Sample : G3000-18RE
 Misc :
 ALS Vial : 11 Sample Multiplier: 1

Instrument :
 BNA_M
 ClientSampleID :
 C02J2RE

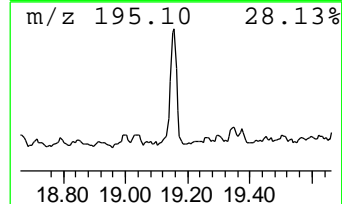
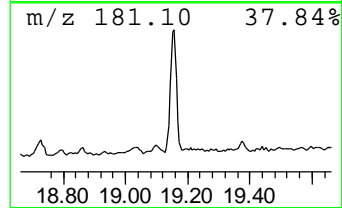
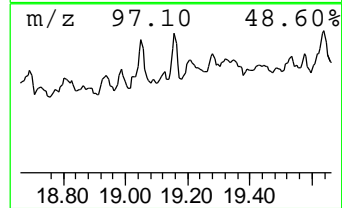
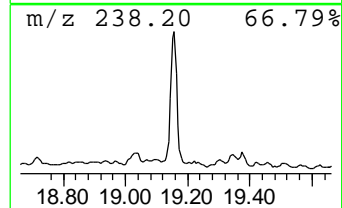
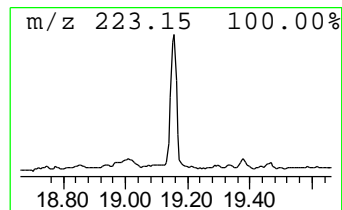
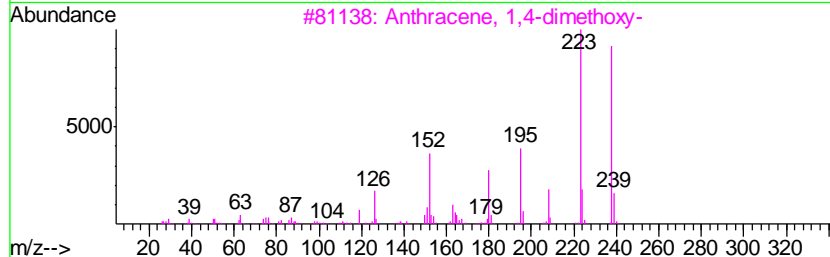
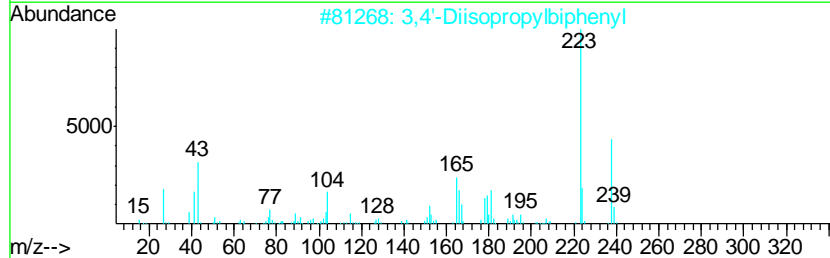
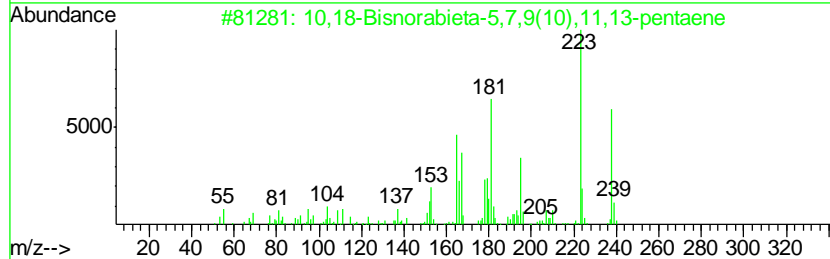
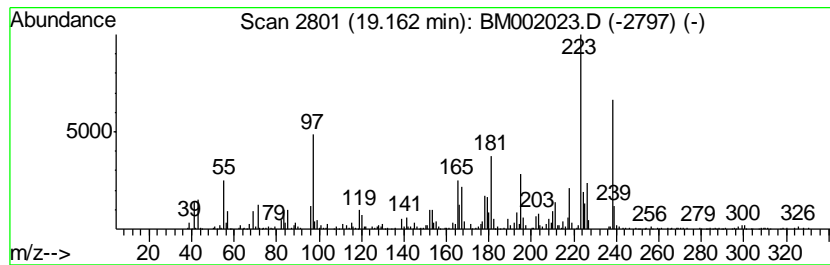
Quant Method : Z:\HPCHEM1\BNA_M\METHODS\SOM02.2-EPA-BM071315.M
 Quant Title : SVOA CALIBRATION

TIC Library : C:\DATABASE\NIST02.L
 TIC Integration Parameters: LSCINT.P

 Peak Number 16 10,18-Bisnorabieta-5,7,9(10)... Concentration Rank 3

R.T.	EstConc	Area	Relative to ISTD	R.T.
19.16	20.00 ng/ul	956606	Chrysene-d12	21.23

Hit#	of	Tentative ID	MW	MolForm	CAS#	Qual
1	5	10,18-Bisnorabieta-5,7,9(10),11,...	238	C18H22	006566-19-4	94
2		3,4'-Diisopropylbiphenyl	238	C18H22	061434-46-6	86
3		Anthracene, 1,4-dimethoxy-	238	C16H14O2	013076-29-4	53
4		3,3'-Diacetylbiiphenyl	238	C16H14O2	094113-07-2	49
5		4,4'-Diisopropylbiphenyl	238	C18H22	018970-30-4	47



Data Path : Z:\HPCHEM1\BNA_M\DATA\BM072315\
 Data File : BM002023.D
 Acq On : 23 Jul 2015 19:12
 Operator : TP/UM
 Sample : G3000-18RE
 Misc :
 ALS Vial : 11 Sample Multiplier: 1

Instrument :
 BNA_M
 ClientSampleId :
 C02J2RE

Quant Method : Z:\HPCHEM1\BNA_M\METHODS\SOM02.2-EPA-BM071315.M
 Quant Title : SVOA CALIBRATION

TIC Library : C:\DATABASE\NIST02.L
 TIC Integration Parameters: LSCINT.P

TIC Top Hit name	RT	EstConc	Units	Response	--Internal Standard--			
					#	RT	Resp	Conc
Butane, 2-methoxy...	2.82	9.5	ng/ul	210164	1	7.62	440392	20.0
(DEL) Alkane: Str...	11.42	4.8	ng/ul	145836	2	10.40	614693	20.0
(DEL) Alkane: Str...	11.83	3.0	ng/ul	91725	2	10.40	614693	20.0
(DEL) Alkane: Str...	12.80	5.1	ng/ul	250919	3	14.28	983931	20.0
unknown-01	13.32	2.2	ng/ul	106113	3	14.28	983931	20.0
1H-3a,7-Methanoaz...	13.59	10.3	ng/ul	507895	3	14.28	983931	20.0
unknown-02	13.80	3.2	ng/ul	157549	3	14.28	983931	20.0
unknown-03	14.10	5.8	ng/ul	285654	3	14.28	983931	20.0
Octadecane, 1-chl...	14.17	3.9	ng/ul	192716	3	14.28	983931	20.0
(DEL) Alkane: Cyc...	14.80	5.9	ng/ul	291372	3	14.28	983931	20.0
(DEL) Alkane: Str...	15.53	19.7	ng/ul	969592	3	14.28	983931	20.0
(DEL) Alkane: Cyc...	15.74	3.3	ng/ul	177766	4	17.03	1081880	20.0
(DEL) Alkane: Str...	16.02	32.5	ng/ul	1759430	4	17.03	1081880	20.0
(DEL) Alkane: Str...	16.84	22.9	ng/ul	1239320	4	17.03	1081880	20.0
(DEL) Alkane: Str...	17.44	12.5	ng/ul	674765	4	17.03	1081880	20.0
10,18-Bisnorabiet...	19.16	20.0	ng/ul	956606	5	21.23	956606	20.0