

Data Path : Z:\HPCHEM1\BNA M\DATA\BM072717\
 Data File : BM011026.D
 Acq On : 28 Jul 2017 00:23
 Operator : SJ/JU
 Sample : I4446-09
 Misc :
 ALS Vial : 25 Sample Multiplier: 1

Instrument :
 BNA_M
 ClientSampleId :

Quant Time: Jul 28 02:01:44 2017
 Quant Method : Z:\HPCHEM1\BNA M\METHODS\8270-BM072617.M
 Quant Title : ASP BNA STANDARDS FOR 5 POINT CALIBRATION
 QLast Update : Wed Jul 26 17:29:06 2017
 Response via : Initial Calibration

Internal Standards	R.T.	QIon	Response	Conc	Units	Dev(Min)
1) 1,4-Dichlorobenzene-d4	7.39	152	189992	20.00	ng	0.00
21) Naphthalene-d8	10.15	136	714332	20.00	ng	0.00
38) Acenaphthene-d10	14.04	164	398321	20.00	ng	0.00
63) Phenanthrene-d10	16.80	188	1164714	20.00	ng	0.00
75) Chrysene-d12	21.02	240	904993	20.00	ng	0.00
86) Perylene-d12	23.13	264	148487	20.00	ng	-0.01
System Monitoring Compounds						
5) 2-Fluorophenol	5.03	112	1361141	121.11	ng	0.00
7) Phenol-d6	6.59	99	1718233	107.60	ng	0.00
23) Nitrobenzene-d5	8.53	82	1559618	81.94	ng	0.00
41) 2,4,6-Tribromophenol	15.55	330	889006	139.25	ng	0.00
44) 2-Fluorobiphenyl	12.66	172	2854304	89.87	ng	0.00
78) Terphenyl-d14	19.47	244	4393172	96.16	ng	0.00

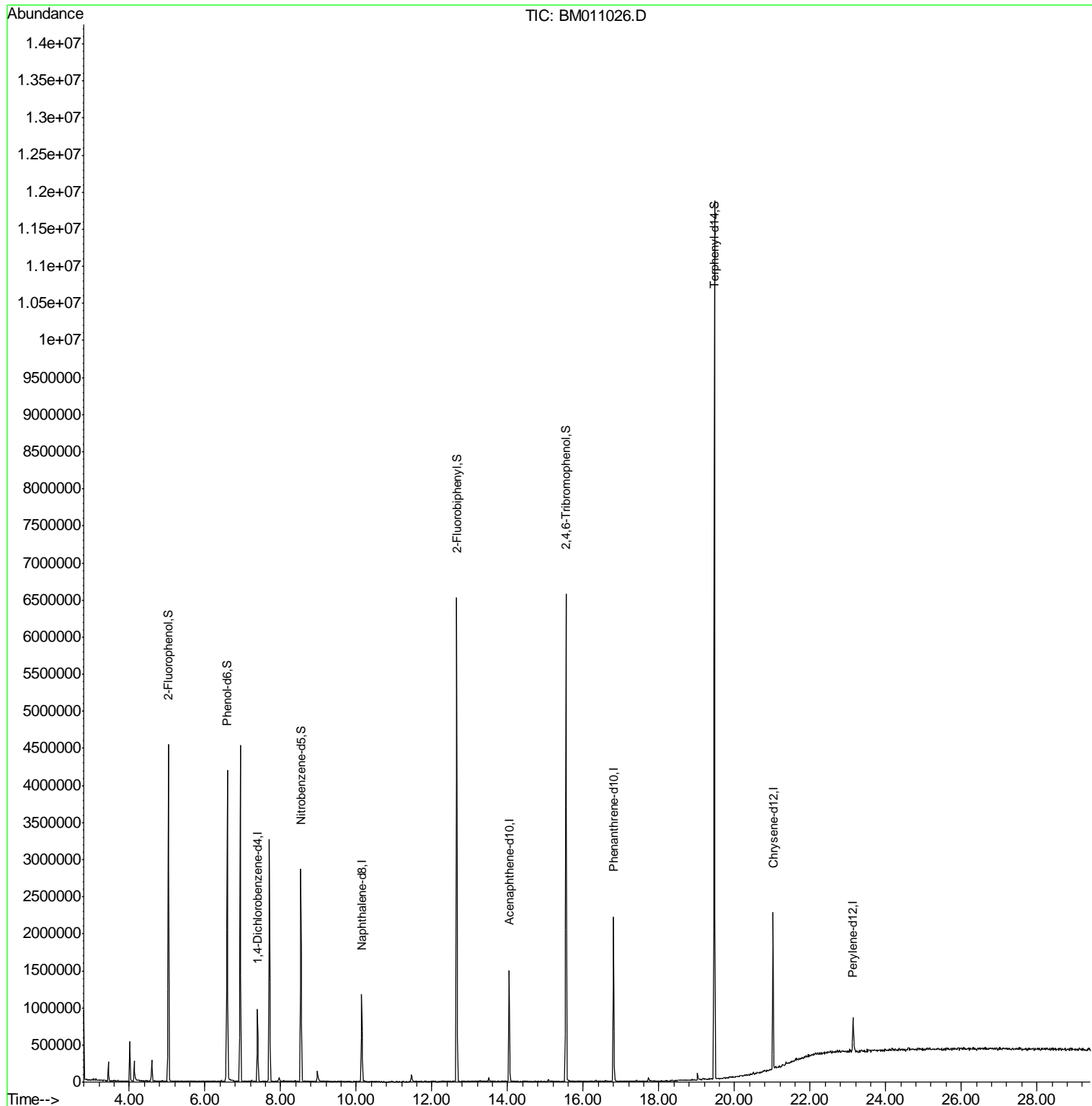
Target Compounds Qvalue

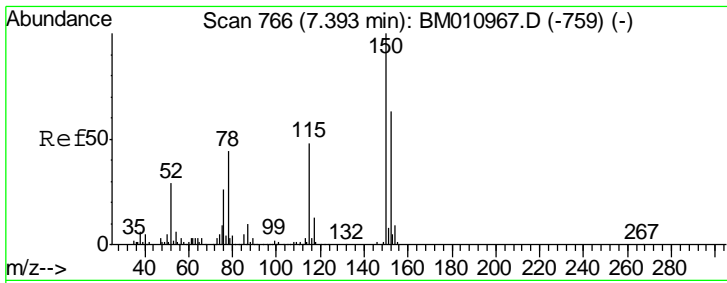
(#) = qualifier out of range (m) = manual integration (+) = signals summed

Data Path : Z:\HPCHEM1\BNA M\DATA\BM072717\
 Data File : BM011026.D
 Acq On : 28 Jul 2017 00:23
 Operator : SJ/JU
 Sample : I4446-09
 Misc :
 ALS Vial : 25 Sample Multiplier: 1

Instrument :
 BNA_M
 ClientSampled :

Quant Time: Jul 28 02:01:44 2017
 Quant Method : Z:\HPCHEM1\BNA M\METHODS\8270-BM072617.M
 Quant Title : ASP BNA STANDARDS FOR 5 POINT CALIBRATION
 QLast Update : Wed Jul 26 17:29:06 2017
 Response via : Initial Calibration

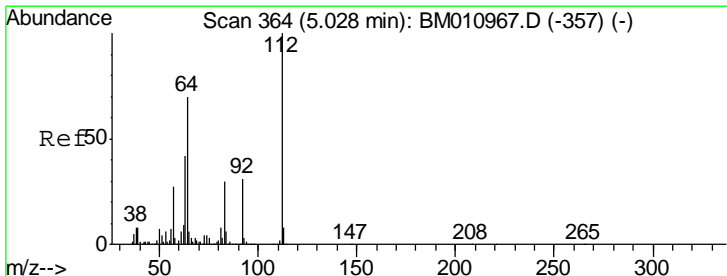
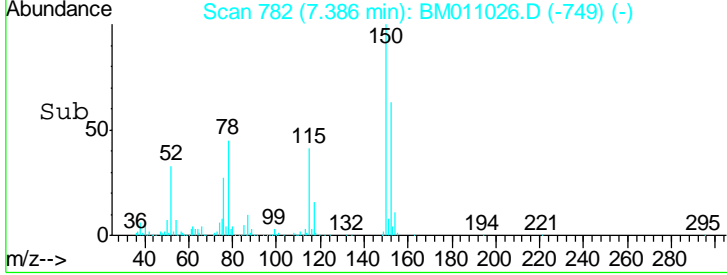
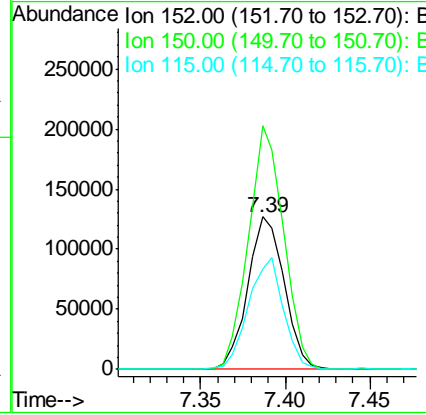
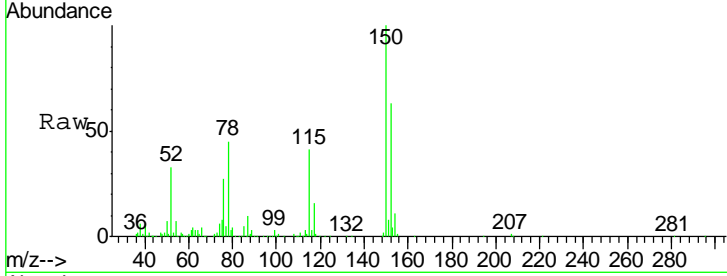




#1
 1,4-Dichlorobenzene-d4
 Concen: 20.00 ng
 RT: 7.39 min Scan# 782
 Delta R.T. -0.01 min
 Lab File: BM011026.D
 Acq: 28 Jul 2017 00:23

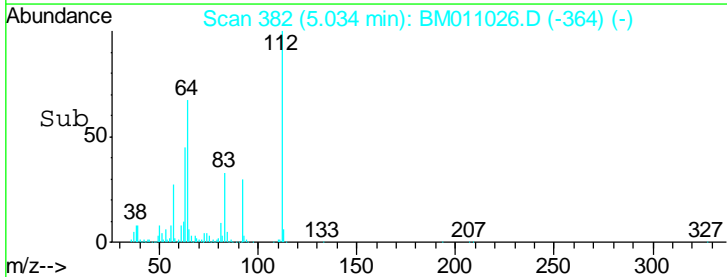
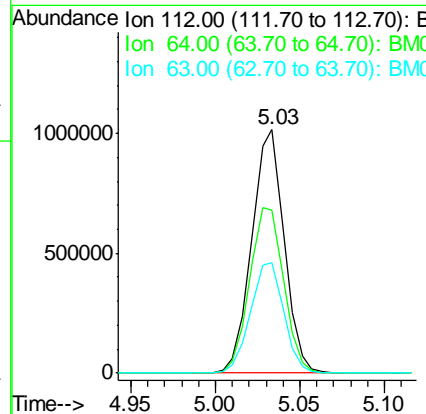
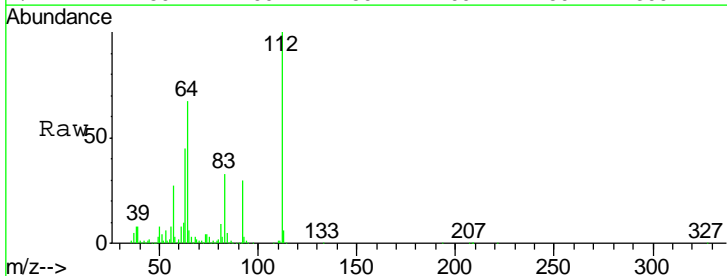
Instrument :
 BNA_M
 ClientSampled :

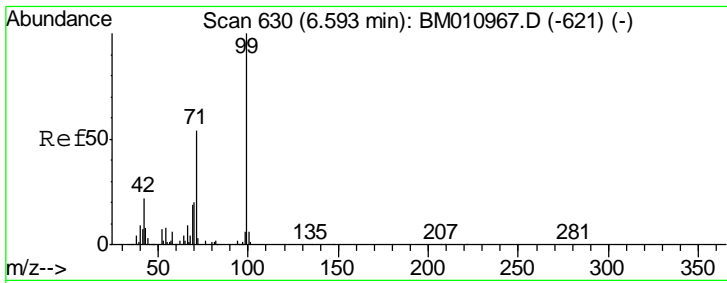
Tgt Ion	Resp	Lower	Upper
152	189992		
150	159.7	119.5	179.3
115	66.0	43.0	64.4#



#5
 2-Fluorophenol
 Concen: 121.11 ng
 RT: 5.03 min Scan# 382
 Delta R.T. 0.01 min
 Lab File: BM011026.D
 Acq: 28 Jul 2017 00:23

Tgt Ion	Resp	Lower	Upper
112	1361141		
64	67.0	38.6	57.8#
63	45.4	19.3	28.9#

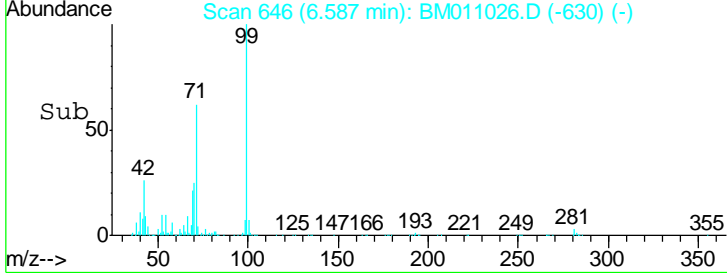
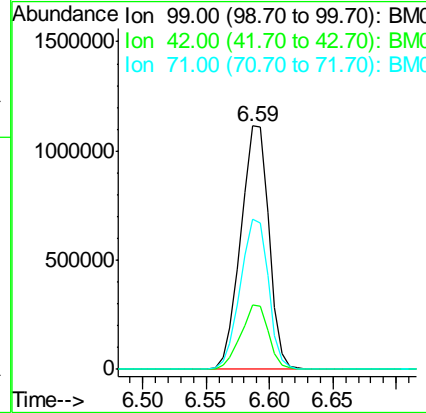
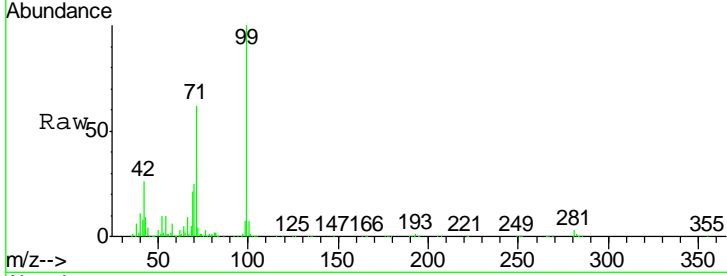




#7
 Phenol-d6
 Concen: 107.60 ng
 RT: 6.59 min Scan# 646
 Delta R.T. -0.01 min
 Lab File: BM011026.D
 Acq: 28 Jul 2017 00:23

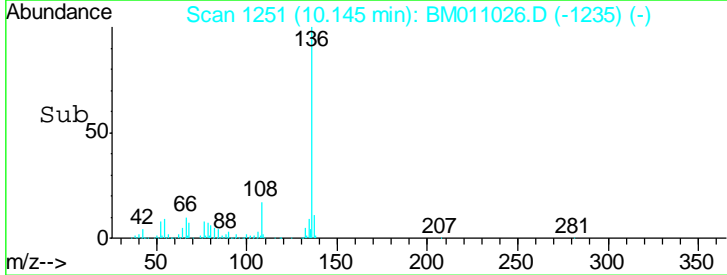
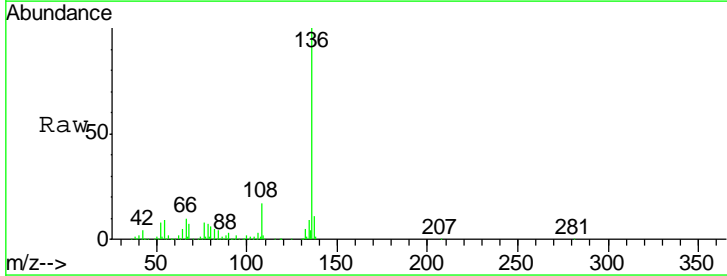
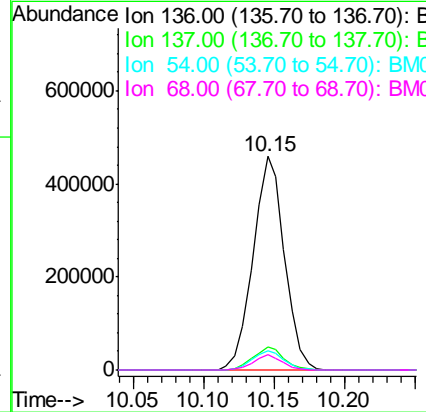
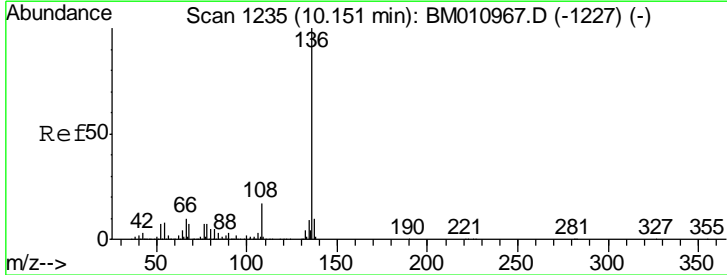
Instrument :
 BNA_M
 ClientSampled :

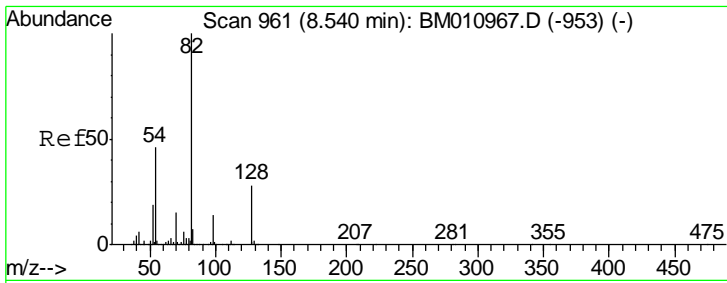
Tgt Ion	Resp	Lower	Upper
99	1718233		
42	26.2	11.0	16.4#
71	61.7	23.4	35.2#



#21
 Naphthalene-d8
 Concen: 20.00 ng
 RT: 10.15 min Scan# 1251
 Delta R.T. -0.01 min
 Lab File: BM011026.D
 Acq: 28 Jul 2017 00:23

Tgt Ion	Resp	Lower	Upper
136	714332		
137	10.7	8.7	13.1
54	8.7	4.6	6.8#
68	7.2	3.7	5.5#

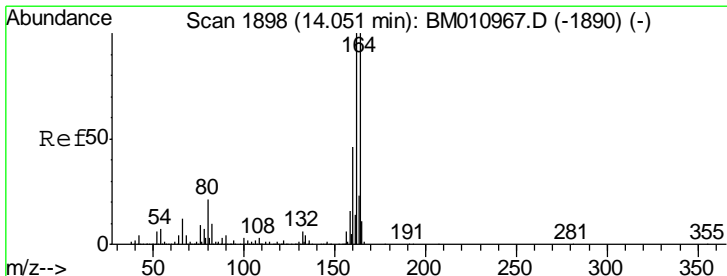
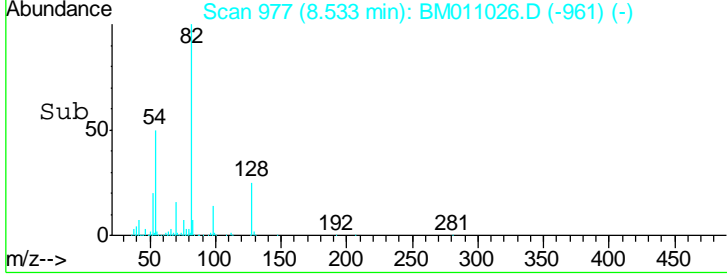
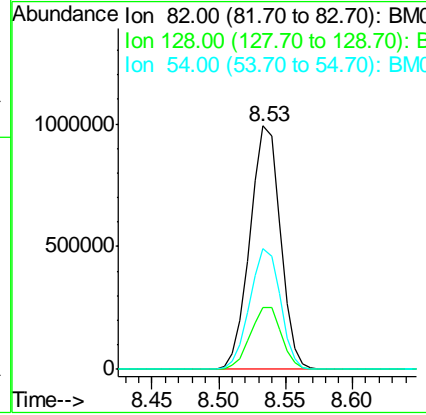
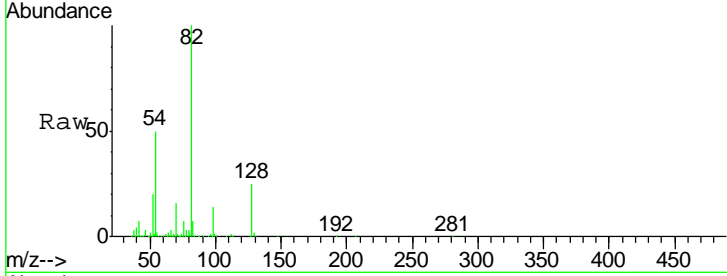




#23
 Nitrobenzene-d5
 Concen: 81.94 ng
 RT: 8.53 min Scan# 977
 Delta R.T. -0.01 min
 Lab File: BM011026.D
 Acq: 28 Jul 2017 00:23

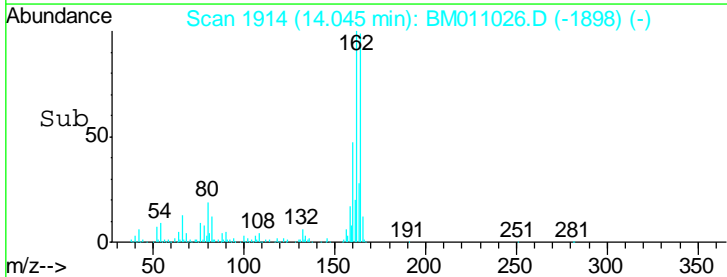
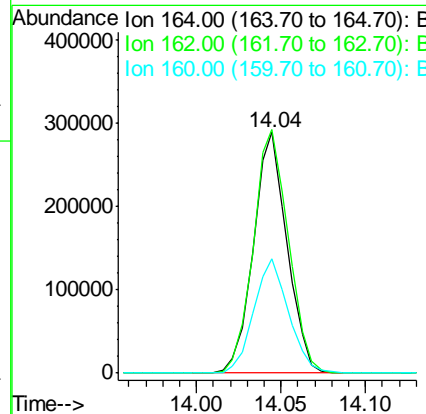
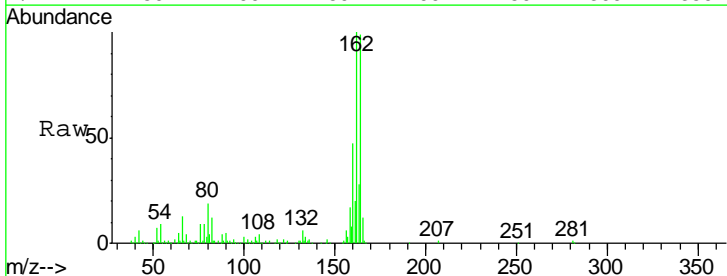
Instrument :
 BNA_M
 ClientSampled :

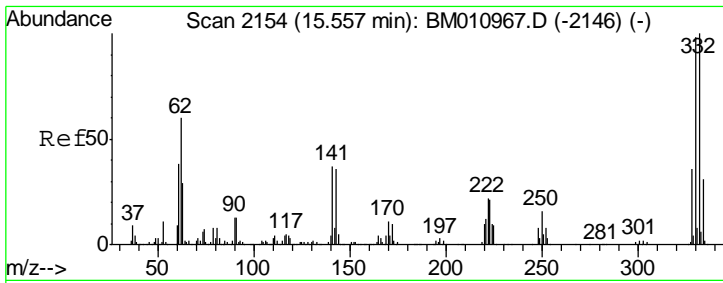
Tgt Ion	Resp	Lower	Upper
82	1559618		
128	25.3	32.8	49.2#
54	49.8	40.6	60.8



#38
 Acenaphthene-d10
 Concen: 20.00 ng
 RT: 14.04 min Scan# 1914
 Delta R.T. -0.01 min
 Lab File: BM011026.D
 Acq: 28 Jul 2017 00:23

Tgt Ion	Resp	Lower	Upper
164	398321		
162	101.2	82.4	123.6
160	47.8	35.8	53.6

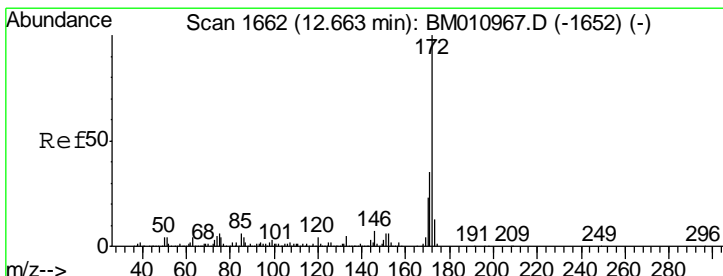
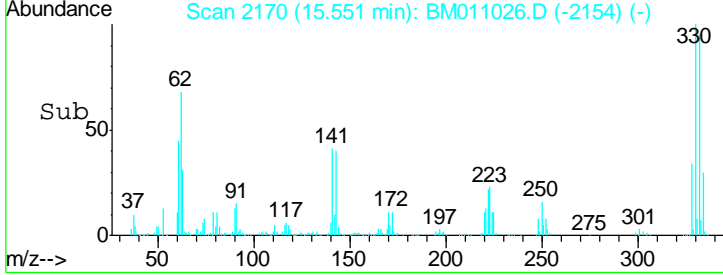
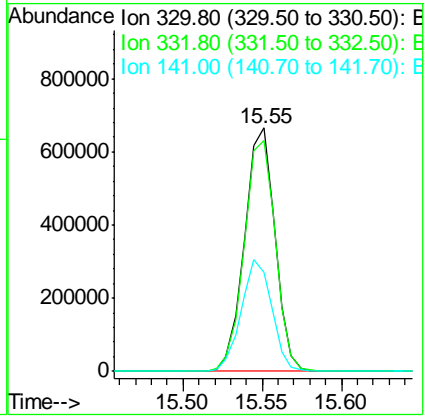
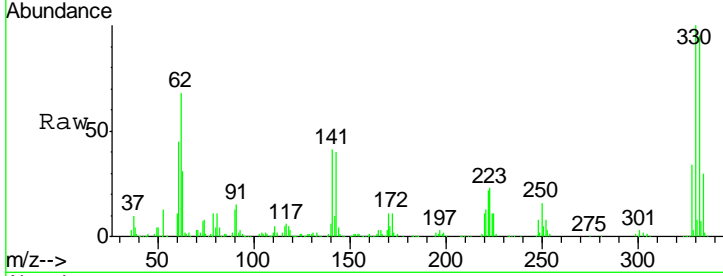




#41
 2,4,6-Tribromophenol
 Concen: 139.25 ng
 RT: 15.55 min Scan# 2170
 Delta R.T. -0.01 min
 Lab File: BM011026.D
 Acq: 28 Jul 2017 00:23

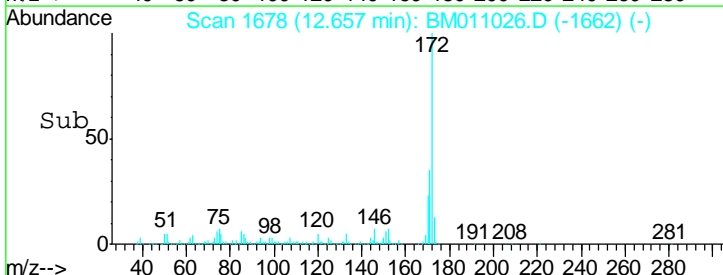
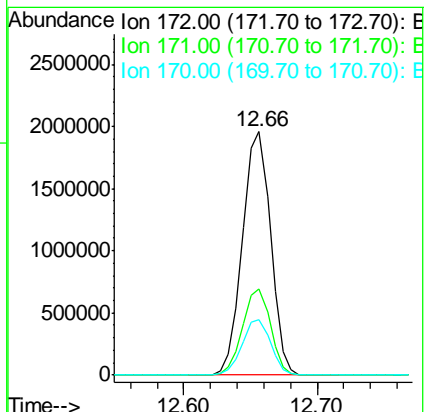
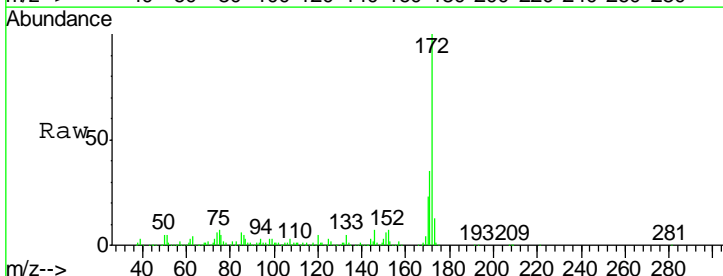
Instrument :
 BNA_M
 ClientSampled :

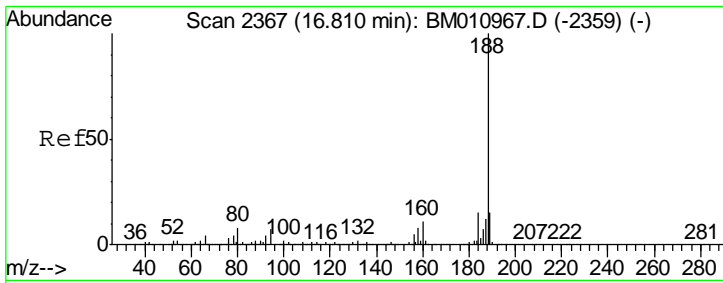
Tgt Ion	Resp	Lower	Upper
330	100		
332	97.6	0.0	0.0#
141	46.2	0.0	0.0#



#44
 2-Fluorobiphenyl
 Concen: 89.87 ng
 RT: 12.66 min Scan# 1678
 Delta R.T. -0.01 min
 Lab File: BM011026.D
 Acq: 28 Jul 2017 00:23

Tgt Ion	Resp	Lower	Upper
172	100		
171	35.3	28.5	42.7
170	22.6	18.8	28.2



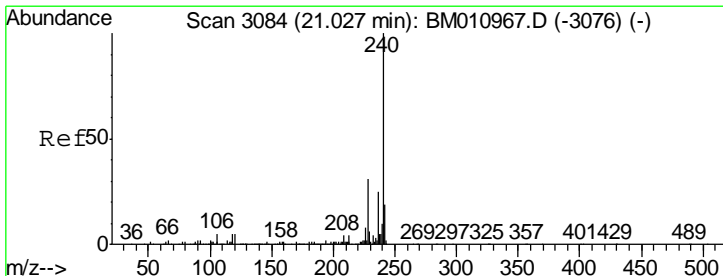
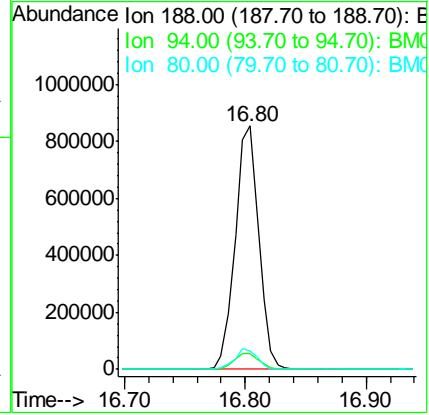
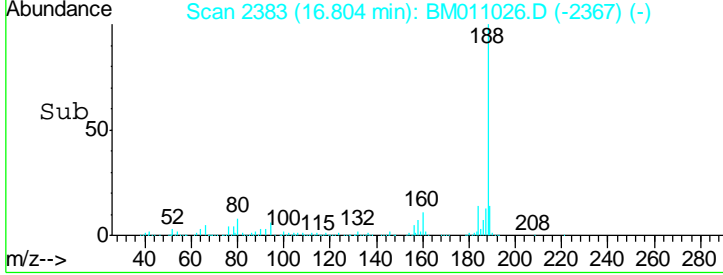
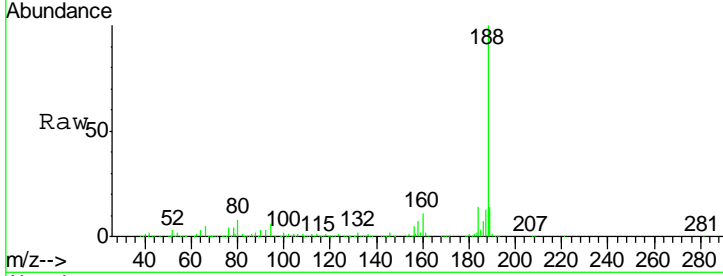


#63
 Phenanthrene-d10
 Concen: 20.00 ng
 RT: 16.80 min Scan# 2383
 Delta R.T. -0.01 min
 Lab File: BM011026.D
 Acq: 28 Jul 2017 00:23

Instrument :
 BNA_M
 ClientSampled :

Tgt Ion:188 Resp: 1164714

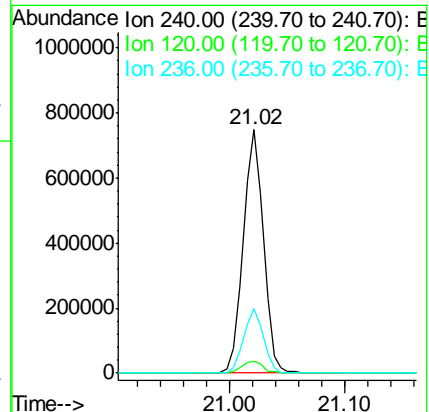
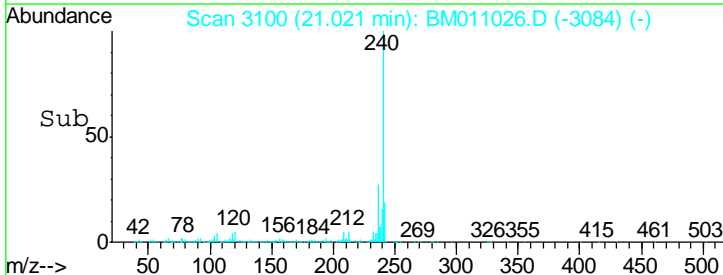
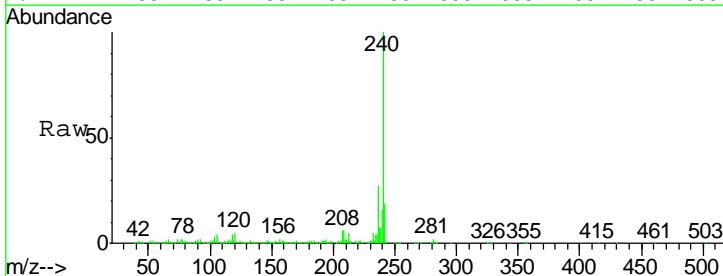
Ion	Ratio	Lower	Upper
188	100		
94	6.5	8.7	13.1#
80	7.8	9.3	13.9#

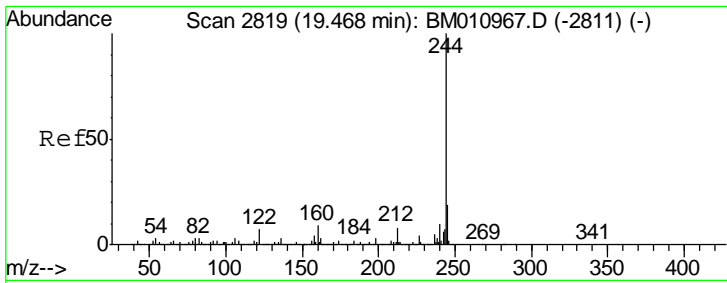


#75
 Chrysene-d12
 Concen: 20.00 ng
 RT: 21.02 min Scan# 3100
 Delta R.T. -0.01 min
 Lab File: BM011026.D
 Acq: 28 Jul 2017 00:23

Tgt Ion:240 Resp: 904993

Ion	Ratio	Lower	Upper
240	100		
120	4.8	8.2	12.2#
236	26.6	20.0	30.0



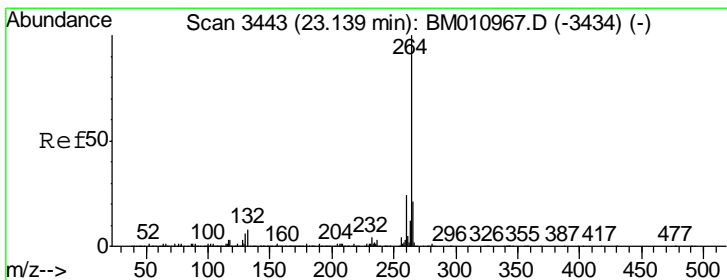
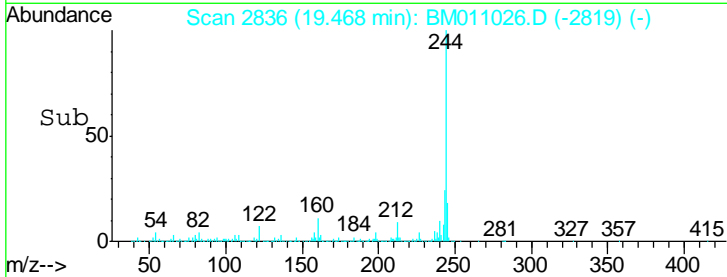
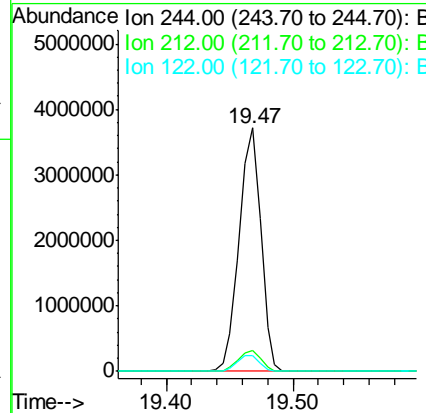
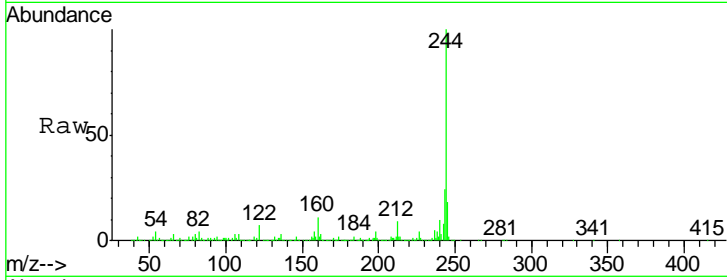


#78
 Terphenyl-d14
 Concen: 96.16 ng
 RT: 19.47 min Scan# 2836
 Delta R.T. -0.00 min
 Lab File: BM011026.D
 Acq: 28 Jul 2017 00:23

Instrument :
 BNA_M
 ClientSampled :

Tgt Ion: 244 Resp: 4393172

Ion	Ratio	Lower	Upper
244	100		
212	8.6	4.9	7.3#
122	6.5	6.2	9.4



#86
 Perylene-d12
 Concen: 20.00 ng
 RT: 23.13 min Scan# 3458
 Delta R.T. -0.01 min
 Lab File: BM011026.D
 Acq: 28 Jul 2017 00:23

Tgt Ion: 264 Resp: 148487

Ion	Ratio	Lower	Upper
264	100		
260	29.6	18.6	27.8#
265	19.8	17.3	25.9

