

Data Path : Z:\svoasrv\HPCHEM1\BNA_M\Data\BM072722\
 Data File : BM035968.D
 Acq On : 28 Jul 2022 02:19
 Operator : CG/JU
 Sample : N3741-11
 Misc :
 ALS Vial : 24 Sample Multiplier: 1

Instrument :
 BNA_M
 ClientSampleId :
 H0B36

Integration Parameters: LSCINT.P

Integrator: RTE
 Smoothing : OFF Filtering: 5
 Sampling : 1 Min Area: 0.1 % of largest Peak
 Start Thrs: 0.2 Max Peaks: 100
 Stop Thrs : 0 Peak Location: TOP

If leading or trailing edge < 100 prefer < Baseline drop else tangent >
 Peak separation: 5

Method : Z:\svoasrv\HPCHEM1\BNA_M\Methods\SFAM-EPA-BM072522.M
 Title : SVOA CALIBRATION

Signal : TIC: BM035968.D\data.ms

peak #	R.T. min	first scan	max scan	last scan	PK TY	peak height	corr. area	corr. % max.	% of total
1	3.269	28	31	37	rVB	67322	84640	1.32%	0.082%
2	3.710	102	106	112	rVB2	39346	51288	0.80%	0.050%
3	3.810	119	123	131	rVB	177533	222252	3.47%	0.215%
4	3.934	139	144	149	rVB	70466	108431	1.69%	0.105%
5	4.028	157	160	165	rVB	29480	35746	0.56%	0.035%
6	4.363	213	217	221	rBV	30330	40865	0.64%	0.039%
7	4.975	314	321	331	rBV2	117737	207120	3.24%	0.200%
8	5.063	331	336	342	rVB	27468	44255	0.69%	0.043%
9	6.551	584	589	596	rVB	97037	145090	2.27%	0.140%
10	7.046	665	673	687	rVB	958405	1552461	24.26%	1.500%
11	7.216	696	702	709	rBV	877598	1325647	20.71%	1.281%
12	7.410	728	735	743	rBV	1077830	1654512	25.85%	1.598%
13	7.881	807	815	823	rBV	1352086	2089086	32.64%	2.018%
14	8.598	929	937	947	rBV	953879	1544785	24.14%	1.492%
15	9.051	1006	1014	1022	rBV	988847	1606029	25.09%	1.551%
16	9.769	1128	1136	1148	rBV	765859	1298008	20.28%	1.254%
17	10.310	1221	1228	1240	rBV	1184001	1965289	30.71%	1.899%
18	10.687	1285	1292	1299	rVV	1842418	3070586	47.98%	2.966%
19	10.739	1299	1301	1307	rVB	30540	37612	0.59%	0.036%
20	10.828	1309	1316	1328	rBV	773414	1364213	21.31%	1.318%
21	12.275	1556	1562	1570	rVB2	25372	51684	0.81%	0.050%
22	12.351	1570	1575	1580	rBV	27944	43807	0.68%	0.042%
23	12.880	1661	1665	1670	rBV2	20818	37423	0.58%	0.036%
24	13.422	1750	1757	1765	rBV2	42365	75001	1.17%	0.072%
25	13.663	1794	1798	1804	rBV	50201	98863	1.54%	0.096%
26	13.727	1806	1809	1817	rVB3	28526	44780	0.70%	0.043%
27	13.933	1833	1844	1853	rBV	2078267	2801914	43.78%	2.707%
28	14.216	1886	1892	1901	rVB	2531273	3603659	56.30%	3.481%
29	14.522	1937	1944	1950	rBV	2567904	3774927	58.98%	3.647%
30	14.580	1950	1954	1963	rVB	174759	253276	3.96%	0.245%
31	14.722	1972	1978	1990	rBV	595036	921395	14.40%	0.890%
32	14.916	2007	2011	2013	rBV	46136	66659	1.04%	0.064%
33	15.316	2070	2079	2085	rBV4	52908	106299	1.66%	0.103%
34	15.510	2105	2112	2118	rBV	3091350	4284719	66.95%	4.139%
35	15.563	2118	2121	2127	rVV	143787	197551	3.09%	0.191%
36	15.627	2127	2132	2139	rVV	535192	782516	12.23%	0.756%

Data Path : Z:\svoasrv\HPCHEM1\BNA_M\Data\BM072722\
 Data File : BM035968.D
 Acq On : 28 Jul 2022 02:19
 Operator : CG/JU
 Sample : N3741-11
 Misc :
 ALS Vial : 24 Sample Multiplier: 1

Instrument :
 BNA_M
 ClientSampleId :
 HOB36

Integration Parameters: LSCINT.P

Integrator: RTE
 Smoothing : OFF
 Sampling : 1
 Start Thrs : 0.2
 Stop Thrs : 0

Filtering: 5
 Min Area: 0.1 % of largest Peak
 Max Peaks: 100
 Peak Location: TOP

If leading or trailing edge < 100 prefer < Baseline drop else tangent >
 Peak separation: 5

Method : Z:\svoasrv\HPCHEM1\BNA_M\Methods\SFAM-EPA-BM072522.M
 Title : SVOA CALIBRATION

37	15.686	2140	2142	2146	rVV3	30624	41022	0.64%	0.040%
38	15.745	2146	2152	2156	rVV2	41779	102684	1.60%	0.099%
39	15.863	2167	2172	2177	rVB3	17462	38150	0.60%	0.037%
40	16.004	2192	2196	2202	rVB	22121	39441	0.62%	0.038%
41	16.233	2230	2235	2242	rVV6	51774	126896	1.98%	0.123%
42	16.568	2288	2292	2296	rVB4	33376	52488	0.82%	0.051%
43	16.739	2317	2321	2324	rBV3	42833	54790	0.86%	0.053%
44	16.804	2328	2332	2340	rVB2	55821	86478	1.35%	0.084%
45	16.916	2347	2351	2355	rBV	29425	41553	0.65%	0.040%
46	16.974	2356	2361	2365	rBV2	219808	296027	4.63%	0.286%
47	17.015	2365	2368	2372	rVV2	139152	186140	2.91%	0.180%
48	17.074	2374	2378	2383	rVB2	89867	133952	2.09%	0.129%
49	17.257	2403	2409	2413	rBV	2765200	3930018	61.40%	3.797%
50	17.304	2413	2417	2421	rVV	1960562	2706046	42.28%	2.614%
51	17.357	2421	2426	2430	rVV	3007468	4160104	65.00%	4.019%
52	17.392	2430	2432	2439	rVV	324040	383740	6.00%	0.371%
53	17.451	2439	2442	2446	rVB5	37168	52425	0.82%	0.051%
54	17.663	2471	2478	2485	rVB	267423	530362	8.29%	0.512%
55	17.804	2500	2502	2506	rVB2	48170	57876	0.90%	0.056%
56	17.933	2520	2524	2529	rVB	288816	338350	5.29%	0.327%
57	18.098	2547	2552	2555	rBV	262497	342048	5.34%	0.330%
58	18.133	2555	2558	2560	rVV	188219	274479	4.29%	0.265%
59	18.157	2560	2562	2564	rVV	327181	386929	6.05%	0.374%
60	18.180	2564	2566	2572	rVV	298391	417563	6.52%	0.403%
61	18.227	2572	2574	2577	rVV	55886	73801	1.15%	0.071%
62	18.262	2577	2580	2585	rVV	75946	104388	1.63%	0.101%
63	18.333	2586	2592	2595	rVV2	368582	579737	9.06%	0.560%
64	18.362	2595	2597	2604	rVB	148638	190181	2.97%	0.184%
65	18.445	2608	2611	2615	rBV4	40345	67895	1.06%	0.066%
66	18.486	2615	2618	2623	rVB2	60071	83857	1.31%	0.081%
67	18.633	2639	2643	2647	rBV	144621	206040	3.22%	0.199%
68	18.674	2647	2650	2655	rVB2	75407	110903	1.73%	0.107%
69	18.757	2660	2664	2668	rVB2	81828	114993	1.80%	0.111%
70	19.015	2704	2708	2713	rBV	559036	799450	12.49%	0.772%
71	19.109	2717	2724	2733	rVB4	460172	790405	12.35%	0.764%
72	19.192	2735	2738	2739	rVV	55294	64642	1.01%	0.062%
73	19.239	2743	2746	2751	rVV	247990	289732	4.53%	0.280%
74	19.315	2754	2759	2767	rVB	2972752	4253238	66.45%	4.109%
75	19.551	2794	2799	2807	rVB4	142216	294933	4.61%	0.285%
76	19.651	2810	2816	2818	rBV	3663999	5302236	82.84%	5.122%

Data Path : Z:\svoasrv\HPCHEM1\BNA_M\Data\BM072722\
 Data File : BM035968.D
 Acq On : 28 Jul 2022 02:19
 Operator : CG/JU
 Sample : N3741-11
 Misc :
 ALS Vial : 24 Sample Multiplier: 1

Instrument :
 BNA_M
 ClientSampleId :
 HOB36

Integration Parameters: LSCINT.P

Integrator: RTE
 Smoothing : OFF Filtering: 5
 Sampling : 1 Min Area: 0.1 % of largest Peak
 Start Thrs: 0.2 Max Peaks: 100
 Stop Thrs : 0 Peak Location: TOP

If leading or trailing edge < 100 prefer < Baseline drop else tangent >
 Peak separation: 5

Method : Z:\svoasrv\HPCHEM1\BNA_M\Methods\SFAM-EPA-BM072522.M
 Title : SVOA CALIBRATION

77	19.680	2818	2821	2828	rVV	3097998	3942416	61.60%	3.809%
78	19.745	2829	2832	2836	rVB2	94537	128708	2.01%	0.124%
79	19.856	2847	2851	2855	rBV	163015	212349	3.32%	0.205%
80	20.168	2900	2904	2908	rVB	519268	627059	9.80%	0.606%
81	20.268	2915	2921	2925	rBV2	388942	589301	9.21%	0.569%
82	20.333	2929	2932	2935	rVB	157496	199778	3.12%	0.193%
83	20.468	2952	2955	2957	rBV	241553	308432	4.82%	0.298%
84	20.527	2958	2965	2966	rBV2	662330	1291644	20.18%	1.248%
85	20.874	3021	3024	3028	rBV2	227510	321240	5.02%	0.310%
86	21.009	3042	3047	3053	rBV7	499425	1373042	21.45%	1.326%
87	21.115	3063	3065	3068	rBV	175136	188657	2.95%	0.182%
88	21.151	3068	3071	3078	rVB3	800223	1142656	17.85%	1.104%
89	21.433	3112	3119	3123	rBV2	3459473	6400348	100.00%	6.183%
90	21.474	3123	3126	3133	rVB	1899430	2374693	37.10%	2.294%
91	21.592	3143	3146	3152	rBV	370782	488895	7.64%	0.472%
92	22.009	3213	3217	3220	rVB	502555	645301	10.08%	0.623%
93	22.792	3347	3350	3360	rVB3	407997	586857	9.17%	0.567%
94	23.092	3395	3401	3405	rBV2	1754781	3572930	55.82%	3.452%
95	23.139	3405	3409	3419	rVB3	1635409	3098315	48.41%	2.993%
96	23.603	3484	3488	3491	rBV	467470	721363	11.27%	0.697%
97	23.656	3492	3497	3501	rVV2	1987511	3685352	57.58%	3.560%
98	23.703	3502	3505	3513	rVB	1305222	2379561	37.18%	2.299%
99	23.809	3517	3523	3529	rBV2	1825323	3442819	53.79%	3.326%
100	24.433	3624	3629	3637	rVB	1020416	2096107	32.75%	2.025%

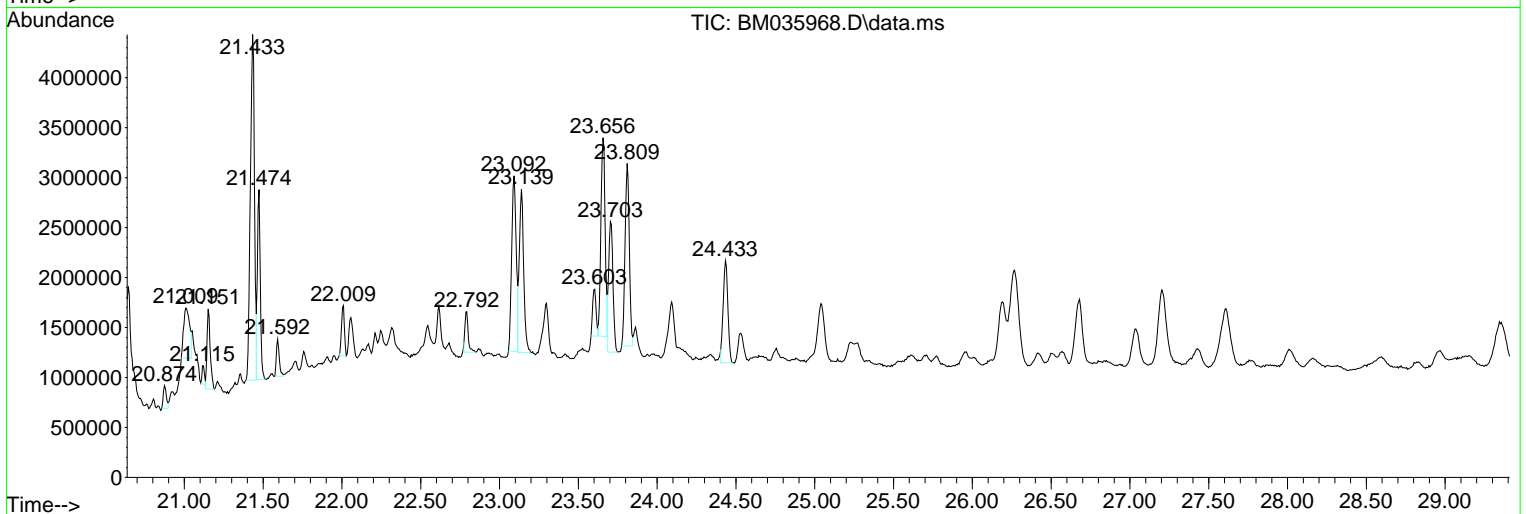
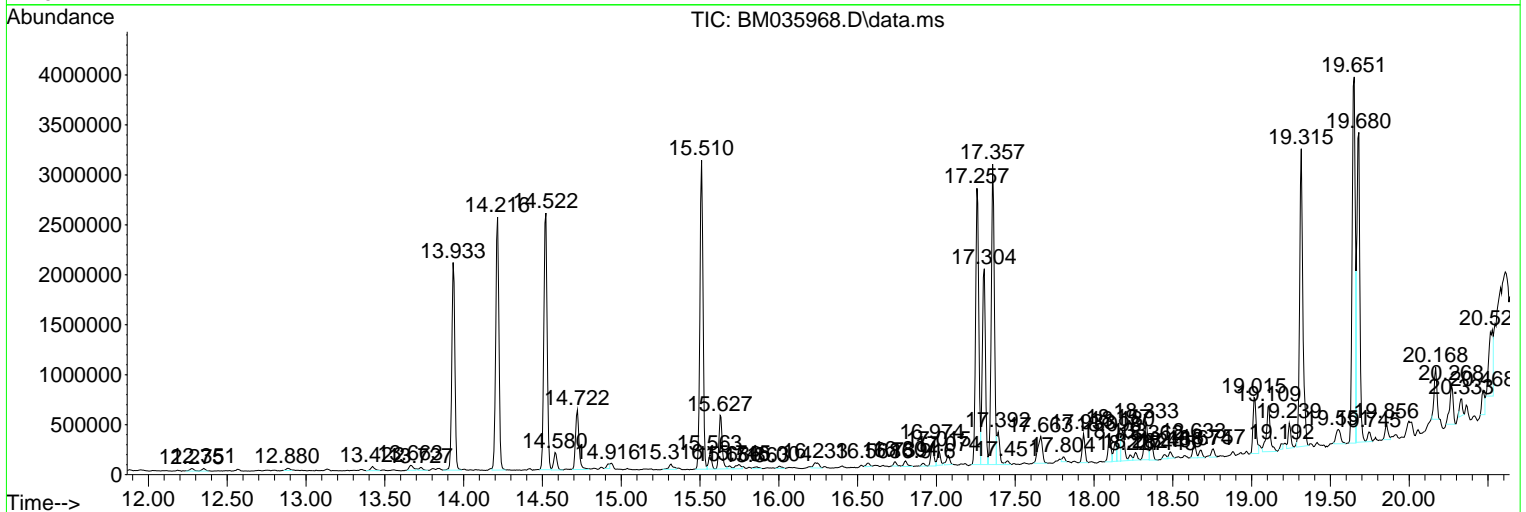
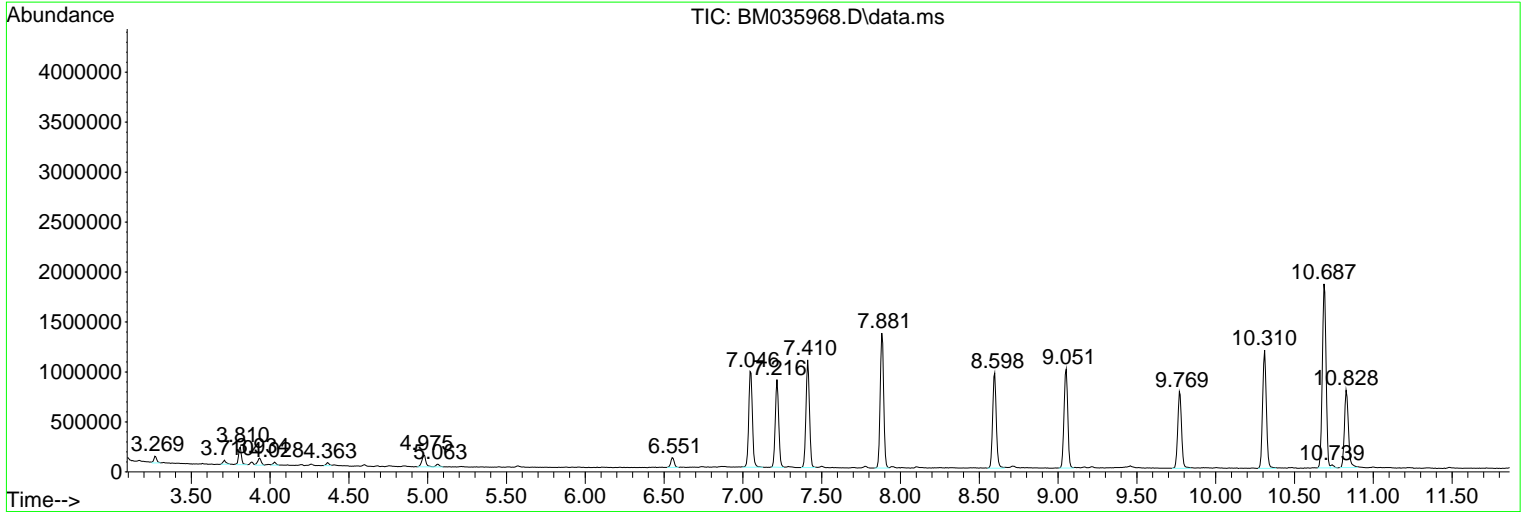
Sum of corrected areas: 103516203

Data Path : Z:\svoasrv\HPCHEM1\BNA_M\Data\BM072722\
 Data File : BM035968.D
 Acq On : 28 Jul 2022 02:19
 Operator : CG/JU
 Sample : N3741-11
 Misc :
 ALS Vial : 24 Sample Multiplier: 1

Instrument :
 BNA_M
 ClientSampleId :
 H0B36

Quant Method : Z:\svoasrv\HPCHEM1\BNA_M\Methods\SFAM-EPA-BM072522.M
 Quant Title : SVOA CALIBRATION

TIC Library : C:\Database\NIST20.L
 TIC Integration Parameters: LSCINT.P



Data Path : Z:\svoasrv\HPCHEM1\BNA_M\Data\BM072722\
 Data File : BM035968.D
 Acq On : 28 Jul 2022 02:19
 Operator : CG/JU
 Sample : N3741-11
 Misc :
 ALS Vial : 24 Sample Multiplier: 1

Instrument :
 BNA_M
 ClientSampleId :
 H0B36

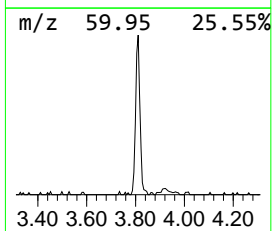
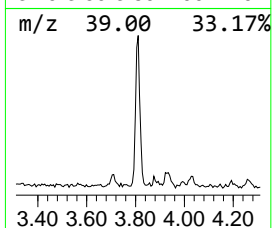
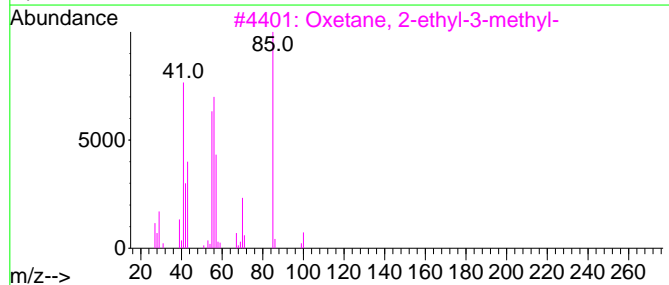
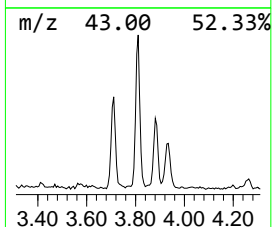
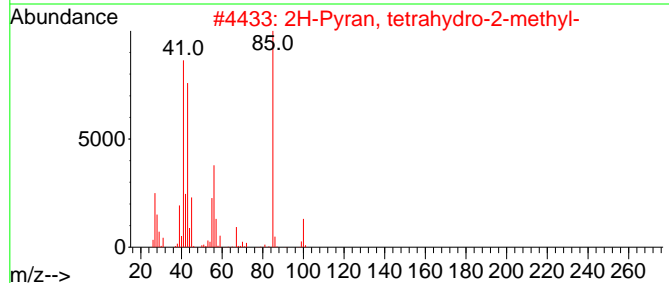
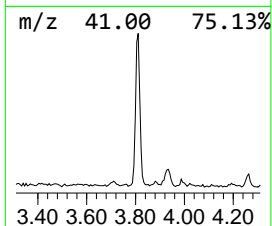
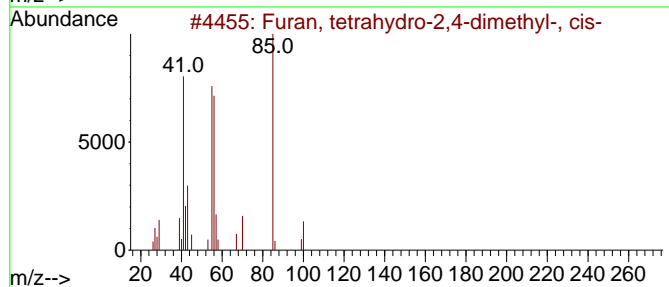
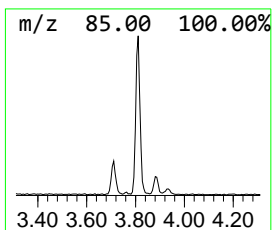
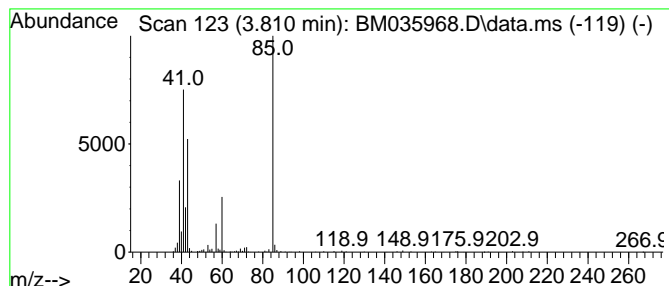
Quant Method : Z:\svoasrv\HPCHEM1\BNA_M\Methods\SFAM-EPA-BM072522.M
 Quant Title : SVOA CALIBRATION

TIC Library : C:\Database\NIST20.L
 TIC Integration Parameters: LSCINT.P

 Peak Number 1 Furan, tetrahydro-2,4-dimet... Concentration Rank 10

R.T.	EstConc	Area	Relative to ISTD	R.T.
3.810	2.13 ng/ul	222252	1,4-Dichlorobenzene-d4	7.881

Hit#	of	5	Tentative ID	MW	MolForm	CAS#	Qual
1			Furan, tetrahydro-2,4-dimethyl-,...	100	C6H12O	039168-01-9	50
2			2H-Pyran, tetrahydro-2-methyl-	100	C6H12O	010141-72-7	50
3			Oxetane, 2-ethyl-3-methyl-	100	C6H12O	053778-62-4	38
4			Thiazole	85	C3H3NS	000288-47-1	37
5			2,2'-Bi-2H-pyran, octahydro-	170	C10H18O2	016282-29-4	25



Data Path : Z:\svoasrv\HPCHEM1\BNA_M\Data\BM072722\
 Data File : BM035968.D
 Acq On : 28 Jul 2022 02:19
 Operator : CG/JU
 Sample : N3741-11
 Misc :
 ALS Vial : 24 Sample Multiplier: 1

Instrument :
 BNA_M
 ClientSampleId :
 H0B36

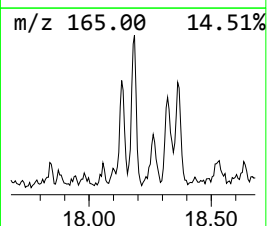
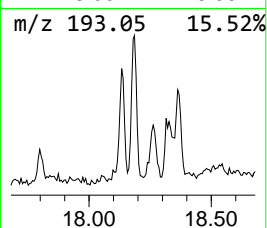
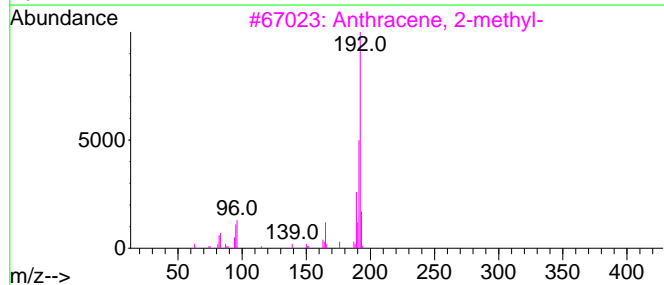
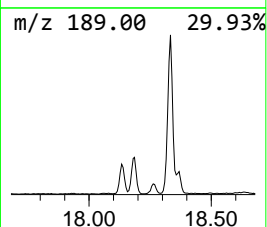
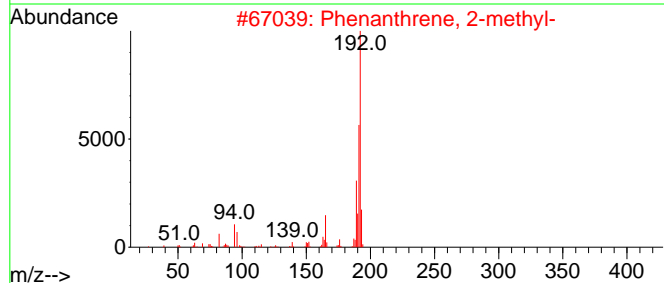
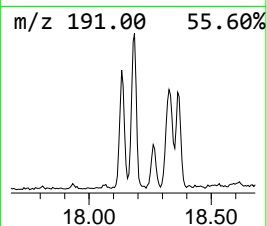
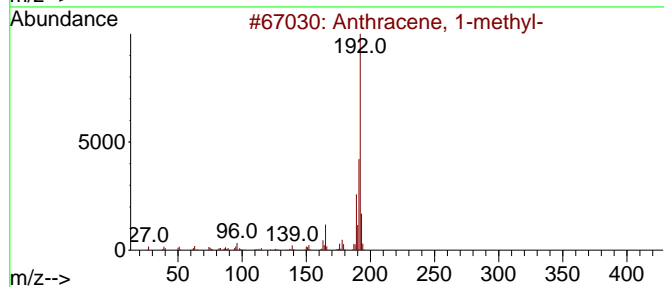
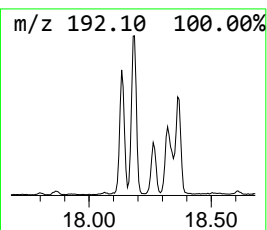
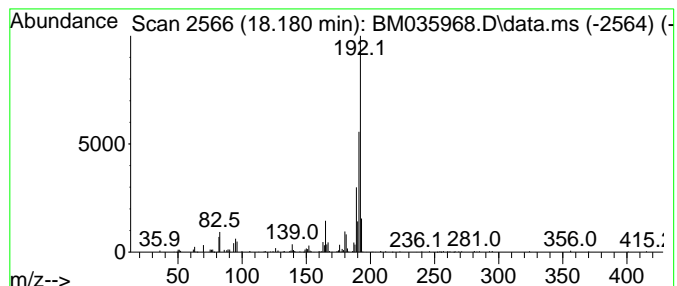
Quant Method : Z:\svoasrv\HPCHEM1\BNA_M\Methods\SFAM-EPA-BM072522.M
 Quant Title : SVOA CALIBRATION

TIC Library : C:\Database\NIST20.L
 TIC Integration Parameters: LSCINT.P

 Peak Number 2 Anthracene, 1-methyl- Concentration Rank 11

R.T.	EstConc	Area	Relative to ISTD	R.T.
18.180	2.12 ng/ul	417563	Phenanthrene-d10	17.257

Hit#	of 5	Tentative ID	MW	MolForm	CAS#	Qual
1		Anthracene, 1-methyl-	192	C15H12	000610-48-0	96
2		Phenanthrene, 2-methyl-	192	C15H12	002531-84-2	95
3		Anthracene, 2-methyl-	192	C15H12	000613-12-7	93
4		1H-Cyclopropa[1]phenanthrene,1a,...	192	C15H12	000949-41-7	93
5		Phenanthrene, 1-methyl-	192	C15H12	000832-69-9	93



Data Path : Z:\svoasrv\HPCHEM1\BNA_M\Data\BM072722\
 Data File : BM035968.D
 Acq On : 28 Jul 2022 02:19
 Operator : CG/JU
 Sample : N3741-11
 Misc :
 ALS Vial : 24 Sample Multiplier: 1

Instrument :
 BNA_M
 ClientSampleId :
 H0B36

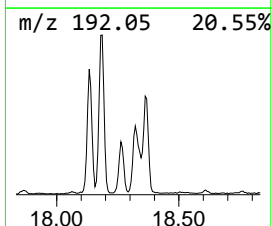
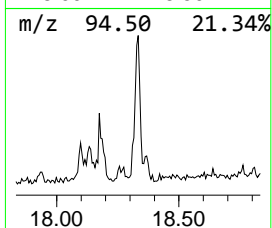
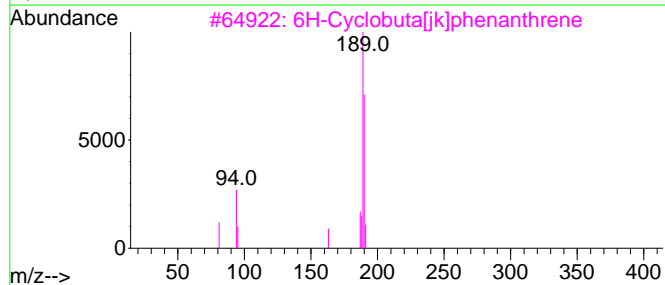
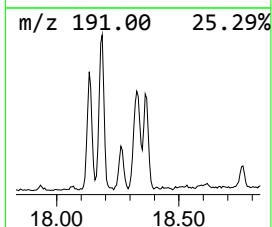
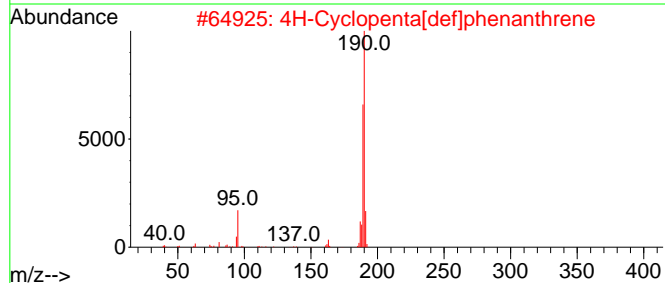
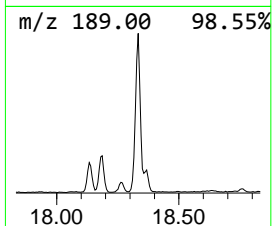
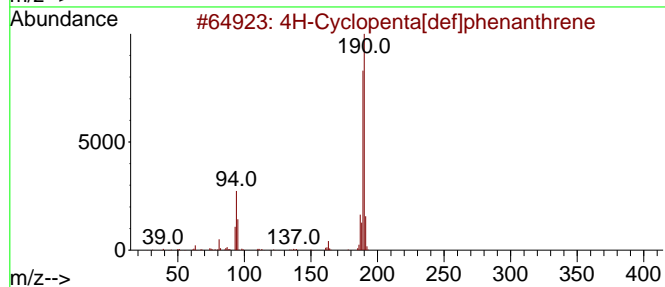
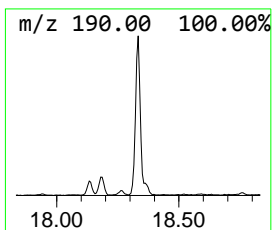
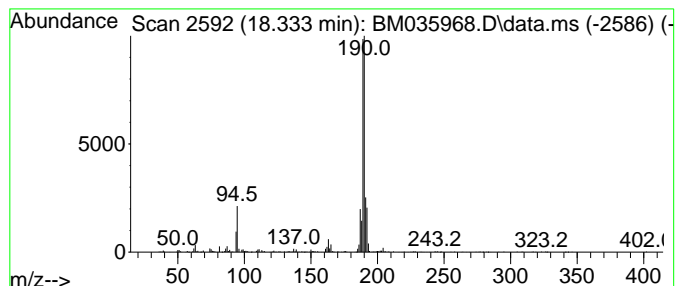
Quant Method : Z:\svoasrv\HPCHEM1\BNA_M\Methods\SFAM-EPA-BM072522.M
 Quant Title : SVOA CALIBRATION

TIC Library : C:\Database\NIST20.L
 TIC Integration Parameters: LSCINT.P

 Peak Number 3 4H-Cyclopenta[def]phenanthrene Concentration Rank 9

R.T.	EstConc	Area	Relative to ISTD	R.T.
18.333	2.95 ng/ul	579737	Phenanthrene-d10	17.257

Hit#	of	5	Tentative ID	MW	MolForm	CAS#	Qual
1			4H-Cyclopenta[def]phenanthrene	190	C15H10	000203-64-5	93
2			4H-Cyclopenta[def]phenanthrene	190	C15H10	000203-64-5	64
3			6H-Cyclobuta[jk]phenanthrene	190	C15H10	083469-43-6	64
4			2,3,5,6-Tetramethylterephthalald...	190	C12H14O2	007072-01-7	50
5			4H-Cyclopenta[def]phenanthrene	190	C15H10	000203-64-5	49



Data Path : Z:\svoasrv\HPCHEM1\BNA_M\Data\BM072722\
 Data File : BM035968.D
 Acq On : 28 Jul 2022 02:19
 Operator : CG/JU
 Sample : N3741-11
 Misc :
 ALS Vial : 24 Sample Multiplier: 1

Instrument :
 BNA_M
 ClientSampleId :
 H0B36

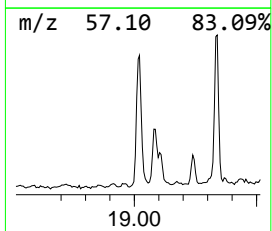
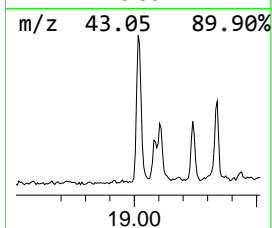
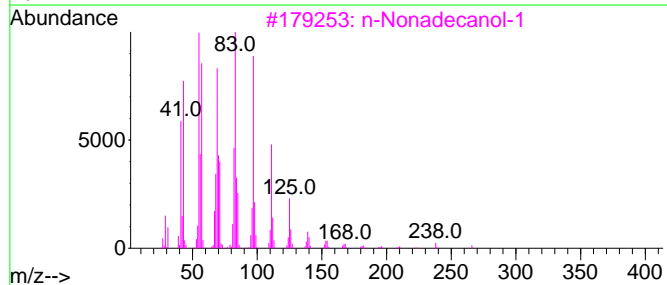
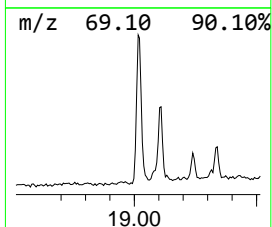
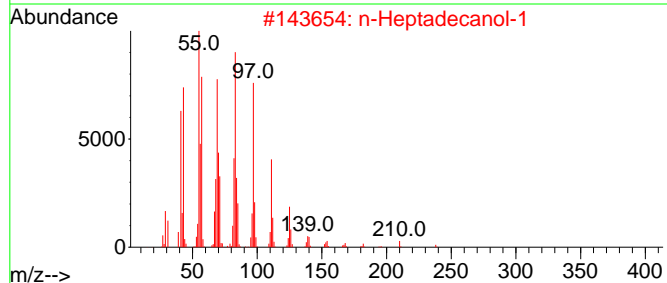
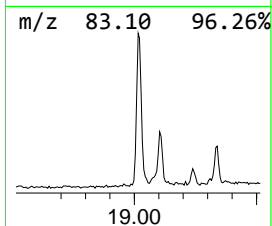
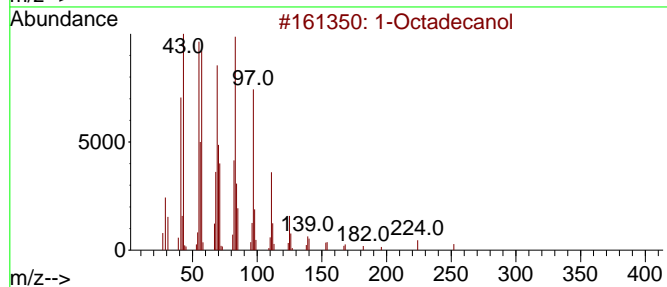
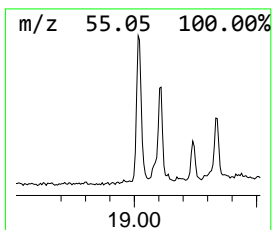
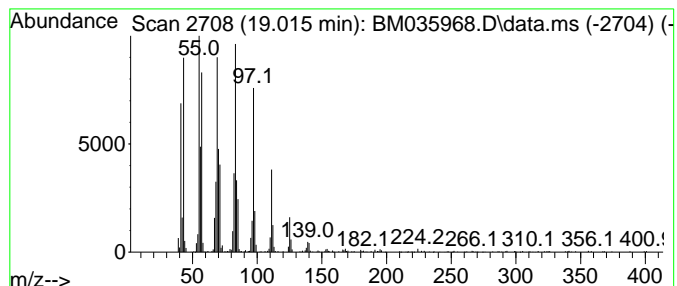
Quant Method : Z:\svoasrv\HPCHEM1\BNA_M\Methods\SFAM-EPA-BM072522.M
 Quant Title : SVOA CALIBRATION

TIC Library : C:\Database\NIST20.L
 TIC Integration Parameters: LSCINT.P

 Peak Number 4 1-Octadecanol Concentration Rank 4

R.T.	EstConc	Area	Relative to ISTD	R.T.
19.015	4.07 ng/ul	799450	Phenanthrene-d10	17.257

Hit#	of	5	Tentative ID	MW	MolForm	CAS#	Qual
1			1-Octadecanol	270	C18H38O	000112-92-5	94
2			n-Heptadecanol-1	256	C17H36O	001454-85-9	94
3			n-Nonadecanol-1	284	C19H40O	001454-84-8	94
4			1-Hexadecanol	242	C16H34O	036653-82-4	93
5			1-Hexadecanol	242	C16H34O	036653-82-4	91



Data Path : Z:\svoasrv\HPCHEM1\BNA_M\Data\BM072722\
 Data File : BM035968.D
 Acq On : 28 Jul 2022 02:19
 Operator : CG/JU
 Sample : N3741-11
 Misc :
 ALS Vial : 24 Sample Multiplier: 1

Instrument :
 BNA_M
 ClientSampleId :
 H0B36

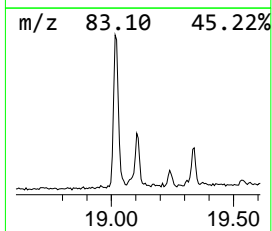
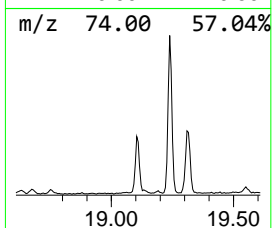
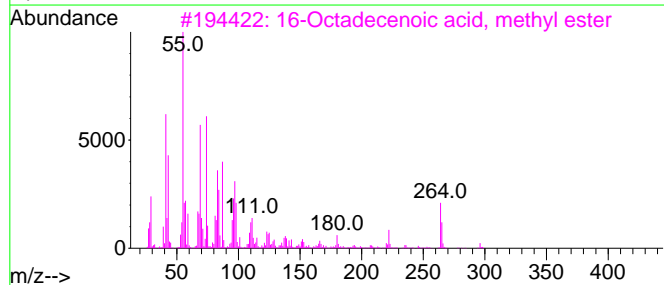
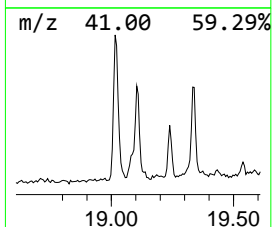
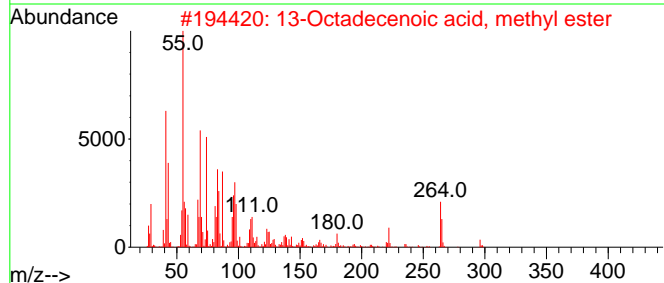
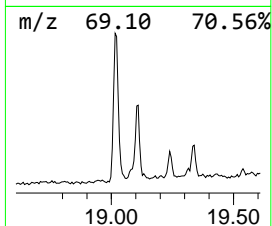
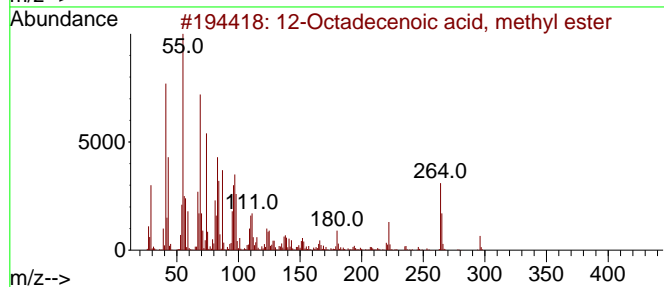
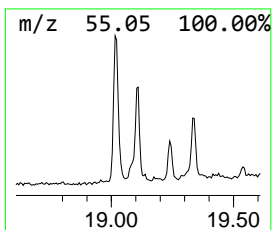
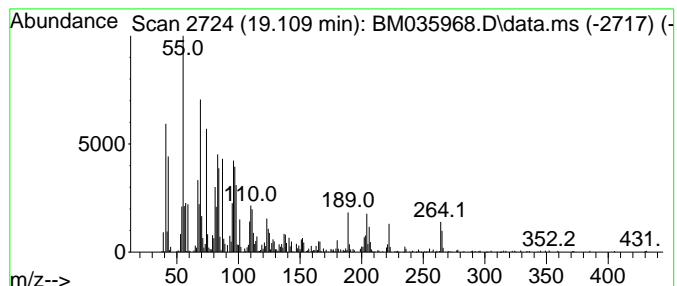
Quant Method : Z:\svoasrv\HPCHEM1\BNA_M\Methods\SFAM-EPA-BM072522.M
 Quant Title : SVOA CALIBRATION

TIC Library : C:\Database\NIST20.L
 TIC Integration Parameters: LSCINT.P

 Peak Number 5 12-Octadecenoic acid, methyl... Concentration Rank 6

R.T.	EstConc	Area	Relative to ISTD	R.T.
19.110	4.02 ng/ul	790405	Phenanthrene-d10	17.257

Hit#	of	5	Tentative ID	MW	MolForm	CAS#	Qual
1			12-Octadecenoic acid, methyl ester	296	C19H36O2	056554-46-2	99
2			13-Octadecenoic acid, methyl ester	296	C19H36O2	056554-47-3	99
3			16-Octadecenoic acid, methyl ester	296	C19H36O2	056554-49-5	98
4			14-Octadecenoic acid, methyl ester	296	C19H36O2	056554-48-4	96
5			9-Octadecenoic acid (Z)-, methyl...	296	C19H36O2	000112-62-9	95



Data Path : Z:\svoasrv\HPCHEM1\BNA_M\Data\BM072722\
 Data File : BM035968.D
 Acq On : 28 Jul 2022 02:19
 Operator : CG/JU
 Sample : N3741-11
 Misc :
 ALS Vial : 24 Sample Multiplier: 1

Instrument :
 BNA_M
 ClientSampleId :
 H0B36

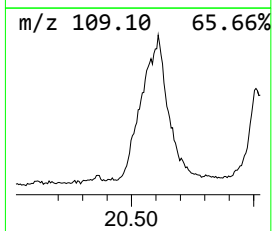
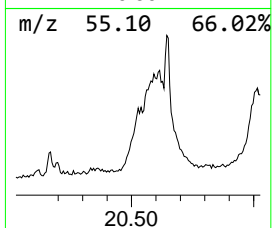
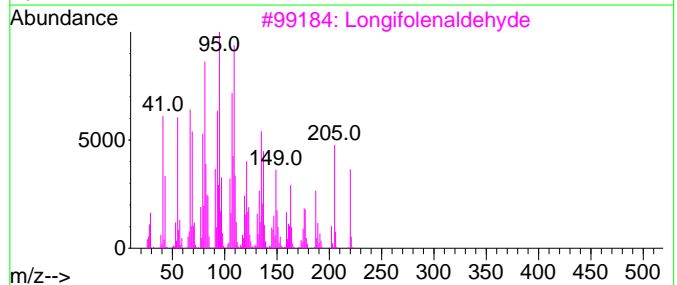
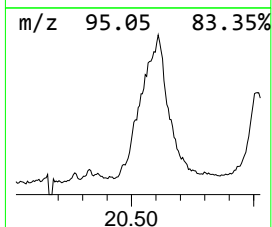
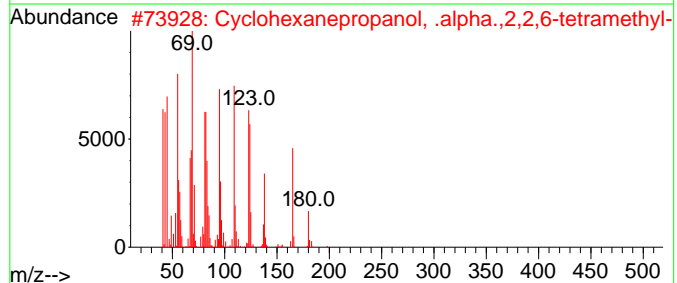
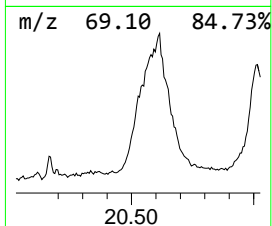
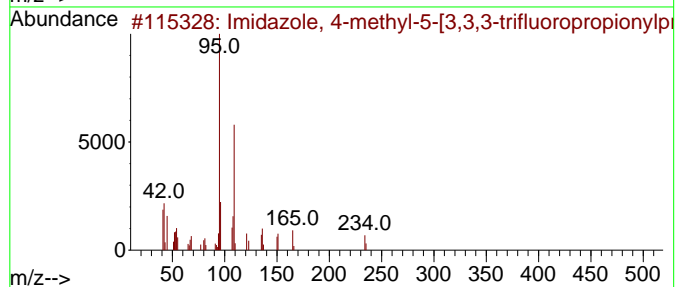
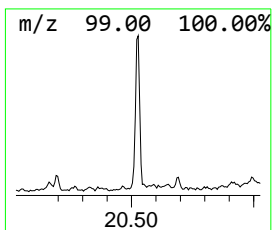
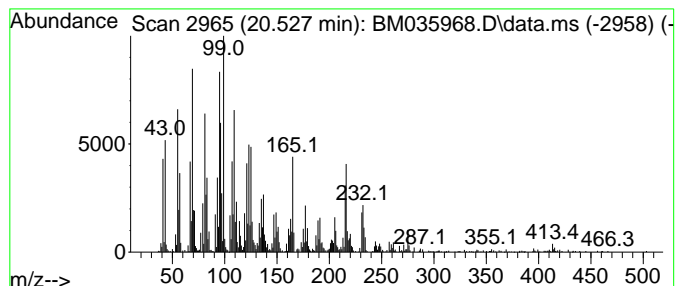
Quant Method : Z:\svoasrv\HPCHEM1\BNA_M\Methods\SFAM-EPA-BM072522.M
 Quant Title : SVOA CALIBRATION

TIC Library : C:\Database\NIST20.L
 TIC Integration Parameters: LSCINT.P

 Peak Number 6 unknown-01 Concentration Rank 5

R.T.	EstConc	Area	Relative to ISTD	R.T.
20.527	4.04 ng/ul	1291640	Chrysene-d12	21.439

Hit#	of 5	Tentative ID	MW	MolForm	CAS#	Qual
1		Imidazole, 4-methyl-5-[3,3,3-tri...	234	C10H13F3N2O	1000129-15-8	35
2		Cyclohexanepropanol, .alpha.,2,2...	198	C13H26O	004361-23-3	30
3		Longifolenaldehyde	220	C15H24O	019890-84-7	30
4		3,5-Octadiene, 4,5-diethyl-3,6-d...	194	C14H26	061233-79-2	25
5		1-Naphthalenepropanol, .alpha.-e...	308	C20H36O2	000515-03-7	25



Data Path : Z:\svoasrv\HPCHEM1\BNA_M\Data\BM072722\
 Data File : BM035968.D
 Acq On : 28 Jul 2022 02:19
 Operator : CG/JU
 Sample : N3741-11
 Misc :
 ALS Vial : 24 Sample Multiplier: 1

Instrument :
 BNA_M
 ClientSampleId :
 H0B36

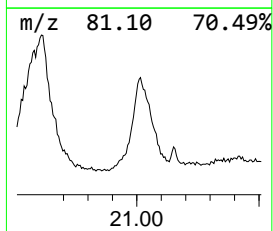
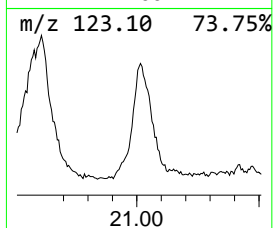
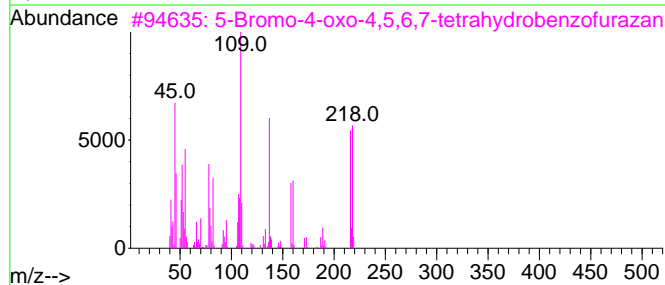
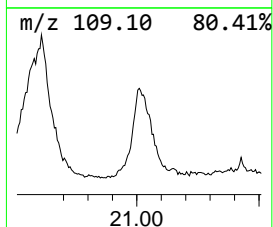
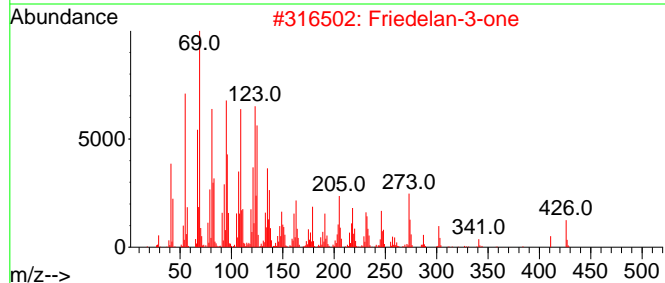
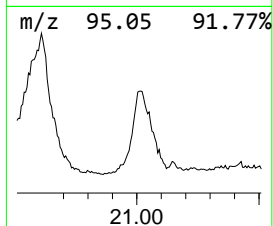
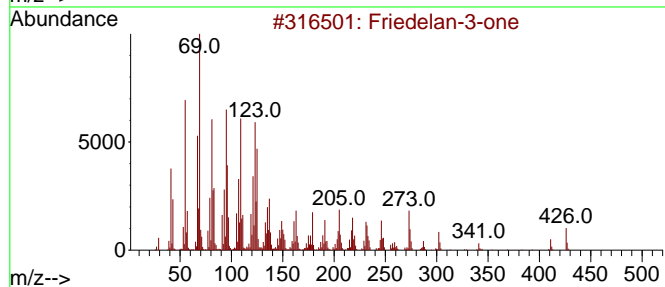
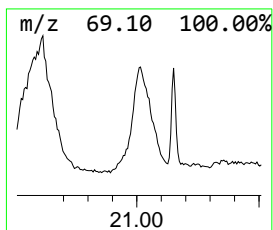
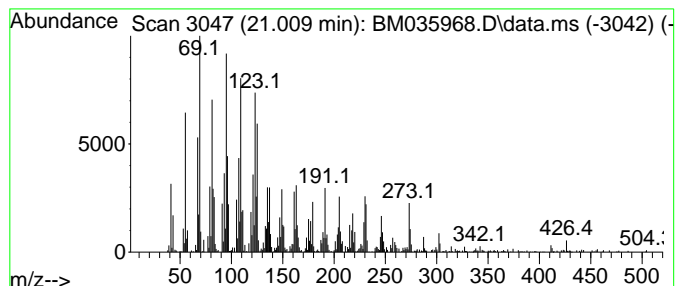
Quant Method : Z:\svoasrv\HPCHEM1\BNA_M\Methods\SFAM-EPA-BM072522.M
 Quant Title : SVOA CALIBRATION

TIC Library : C:\Database\NIST20.L
 TIC Integration Parameters: LSCINT.P

 Peak Number 7 5-Bromo-4-oxo-4,5,6,7-tetra... Concentration Rank 2

R.T.	EstConc	Area	Relative to ISTD	R.T.
21.009	4.29 ng/ul	1373040	Chrysene-d12	21.439

Hit#	of 5	Tentative ID	MW	MolForm	CAS#	Qual
1		Friedelan-3-one	426	C30H500	000559-74-0	91
2		Friedelan-3-one	426	C30H500	000559-74-0	91
3		5-Bromo-4-oxo-4,5,6,7-tetrahydro...	216	C6H5BrN2O2	300574-36-1	90
4		Friedelan-3-one	426	C30H500	000559-74-0	86
5		Sesquirosefuran	218	C15H22O	039007-93-7	55



Data Path : Z:\svoasrv\HPCHEM1\BNA_M\Data\BM072722\
 Data File : BM035968.D
 Acq On : 28 Jul 2022 02:19
 Operator : CG/JU
 Sample : N3741-11
 Misc :
 ALS Vial : 24 Sample Multiplier: 1

Instrument :
 BNA_M
 ClientSampleId :
 H0B36

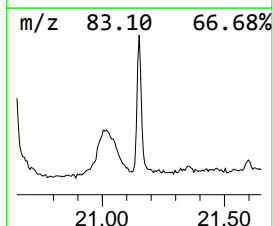
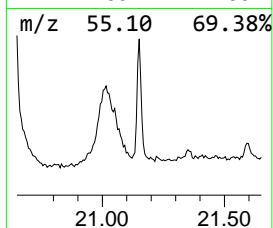
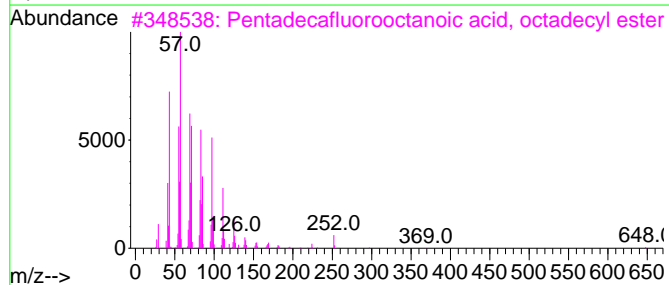
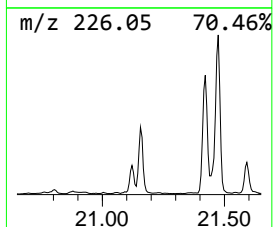
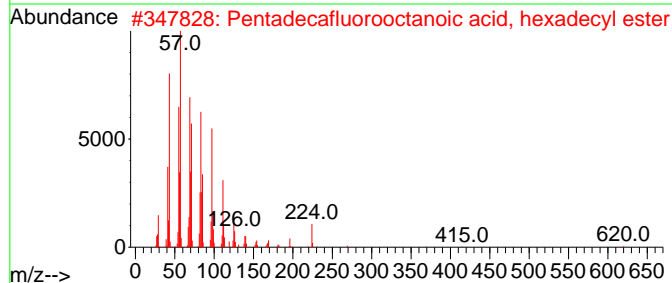
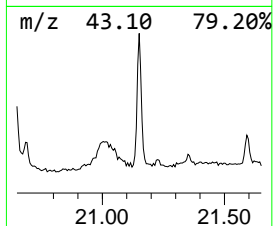
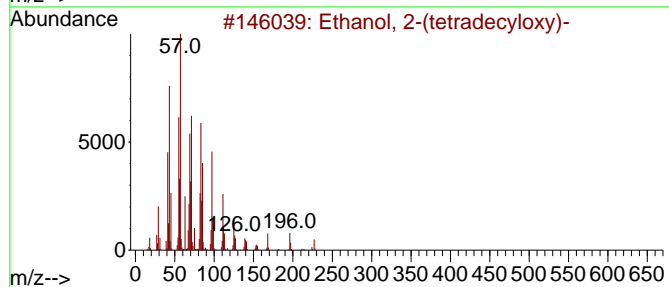
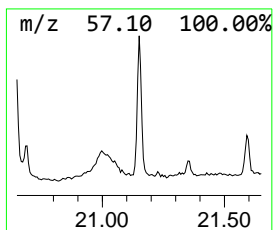
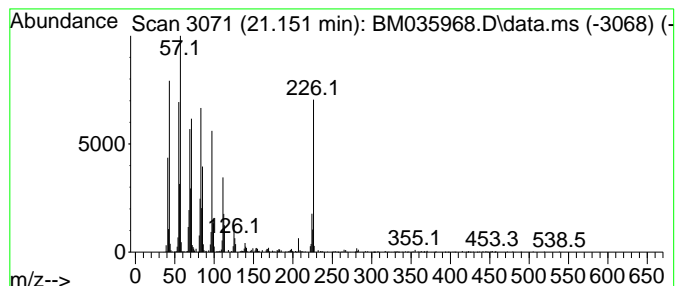
Quant Method : Z:\svoasrv\HPCHEM1\BNA_M\Methods\SFAM-EPA-BM072522.M
 Quant Title : SVOA CALIBRATION

TIC Library : C:\Database\NIST20.L
 TIC Integration Parameters: LSCINT.P

 Peak Number 8 Ethanol, 2-(tetradecyloxy)- Concentration Rank 7

R.T.	EstConc	Area	Relative to ISTD	R.T.
21.151	3.57 ng/ul	1142660	Chrysene-d12	21.439

Hit#	of 5	Tentative ID	MW	MolForm	CAS#	Qual
1		Ethanol, 2-(tetradecyloxy)-	258	C16H34O2	002136-70-1	97
2		Pentadecafluorooctanoic acid, he...	638	C24H33F15O2	1000406-04-6	90
3		Pentadecafluorooctanoic acid, oc...	666	C26H37F15O2	1000406-04-8	89
4		Trihexadecyl borate	735	C48H99B03	002665-11-4	74
5		Cyclohexadecane	224	C16H32	000295-65-8	70



Data Path : Z:\svoasrv\HPCHEM1\BNA_M\Data\BM072722\
 Data File : BM035968.D
 Acq On : 28 Jul 2022 02:19
 Operator : CG/JU
 Sample : N3741-11
 Misc :
 ALS Vial : 24 Sample Multiplier: 1

Instrument :
 BNA_M
 ClientSampleId :
 H0B36

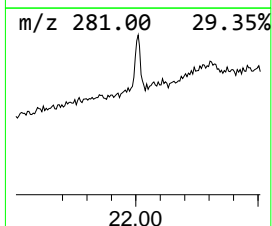
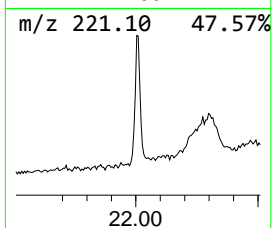
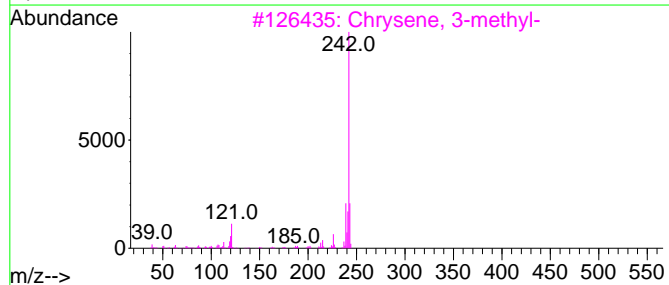
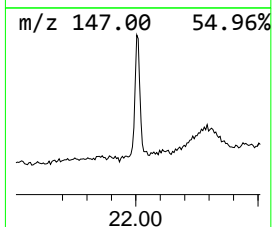
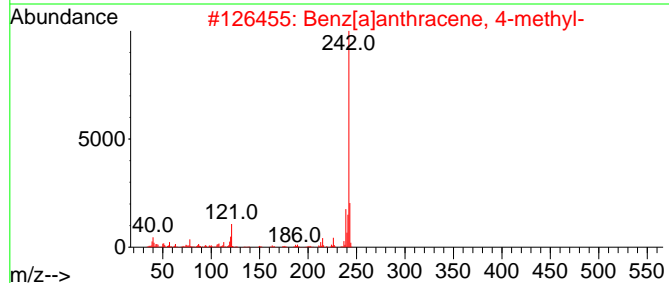
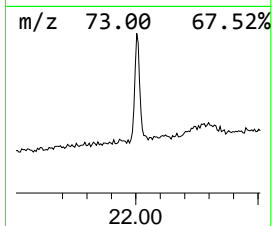
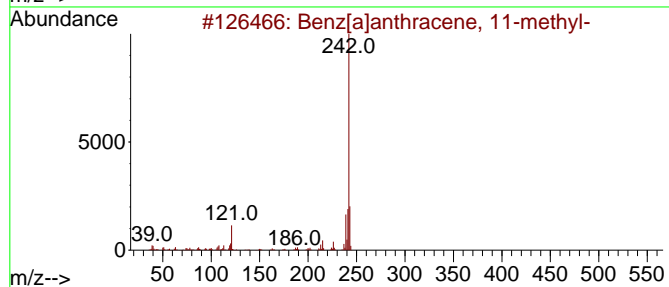
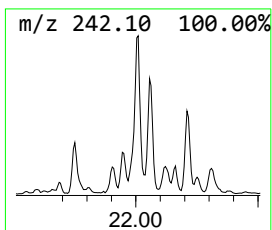
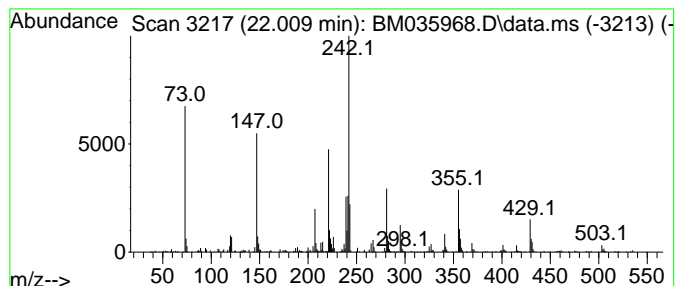
Quant Method : Z:\svoasrv\HPCHEM1\BNA_M\Methods\SFAM-EPA-BM072522.M
 Quant Title : SVOA CALIBRATION

TIC Library : C:\Database\NIST20.L
 TIC Integration Parameters: LSCINT.P

 Peak Number 9 Benz[a]anthracene, 11-methyl- Concentration Rank 12

R.T.	EstConc	Area	Relative to ISTD	R.T.
22.009	2.02 ng/ul	645301	Chrysene-d12	21.439

Hit#	of	5	Tentative ID	MW	MolForm	CAS#	Qual
1			Benz[a]anthracene, 11-methyl-	242	C19H14	006111-78-0	74
2			Benz[a]anthracene, 4-methyl-	242	C19H14	000316-49-4	70
3			Chrysene, 3-methyl-	242	C19H14	003351-31-3	52
4			Triphenylene, 2-methyl-	242	C19H14	001705-84-6	52
5			Benz[a]anthracene, 7-methyl-	242	C19H14	002541-69-7	51



Data Path : Z:\svoasrv\HPCHEM1\BNA_M\Data\BM072722\
 Data File : BM035968.D
 Acq On : 28 Jul 2022 02:19
 Operator : CG/JU
 Sample : N3741-11
 Misc :
 ALS Vial : 24 Sample Multiplier: 1

Instrument :
 BNA_M
 ClientSampleId :
 H0B36

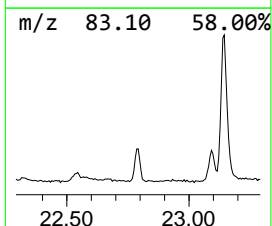
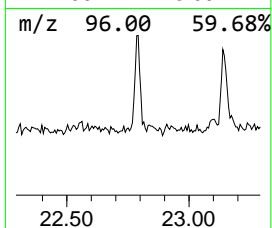
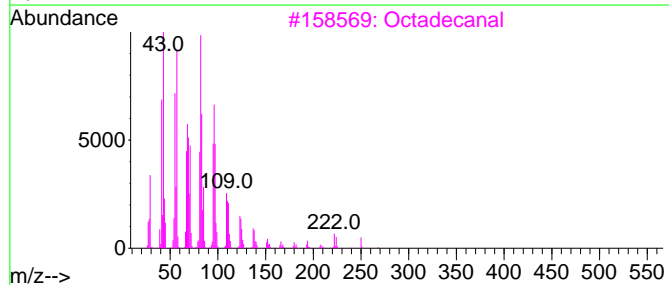
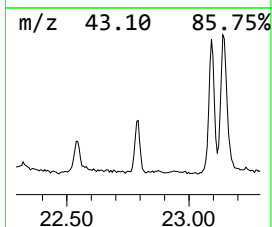
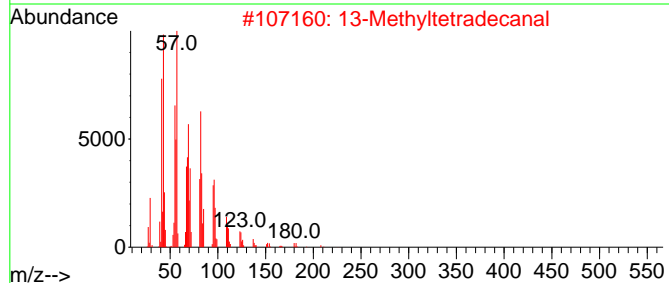
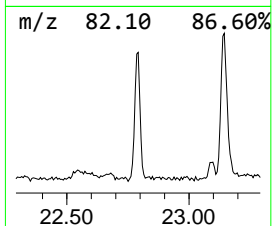
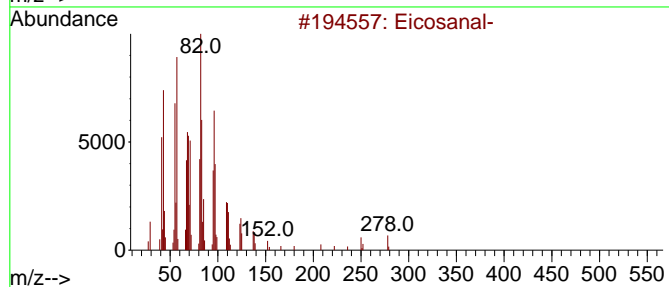
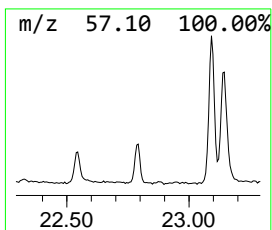
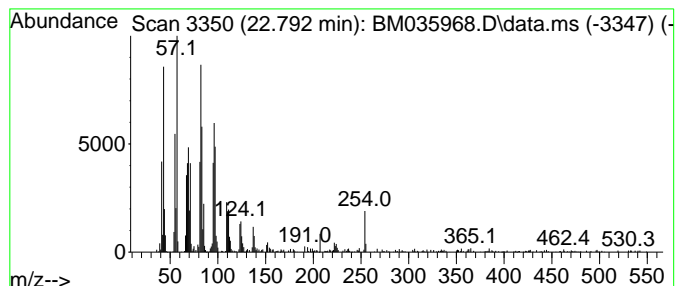
Quant Method : Z:\svoasrv\HPCHEM1\BNA_M\Methods\SFAM-EPA-BM072522.M
 Quant Title : SVOA CALIBRATION

TIC Library : C:\Database\NIST20.L
 TIC Integration Parameters: LSCINT.P

 Peak Number 10 Eicosanal- Concentration Rank 8

R.T.	EstConc	Area	Relative to ISTD	R.T.
22.792	3.41 ng/ul	586857	Perylene-d12	23.809

Hit#	of 5	Tentative ID	MW	MolForm	CAS#	Qual
1		Eicosanal-	296	C20H40O	002400-66-0	93
2		13-Methyltetradecanal	226	C15H30O	075853-51-9	93
3		Octadecanal	268	C18H36O	000638-66-4	93
4		Tetradecanal	212	C14H28O	000124-25-4	91
5		Oxirane, hexadecyl-	268	C18H36O	007390-81-0	91



Data Path : Z:\svoasrv\HPCHEM1\BNA_M\Data\BM072722\
 Data File : BM035968.D
 Acq On : 28 Jul 2022 02:19
 Operator : CG/JU
 Sample : N3741-11
 Misc :
 ALS Vial : 24 Sample Multiplier: 1

Instrument :
 BNA_M
 ClientSampleId :
 H0B36

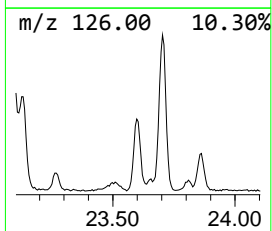
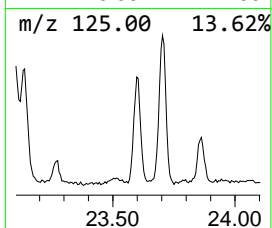
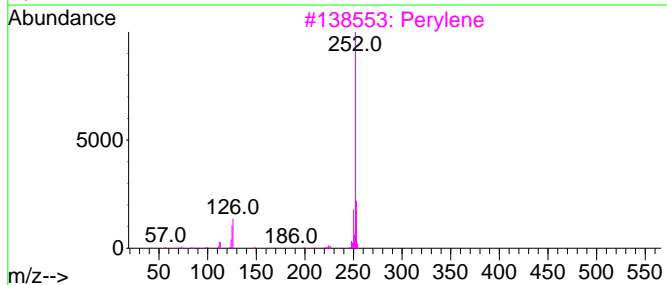
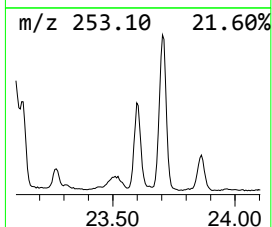
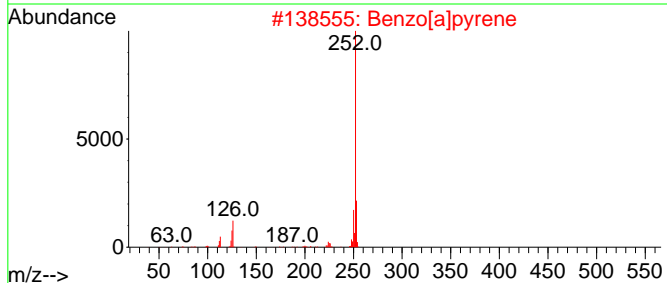
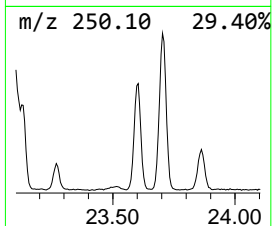
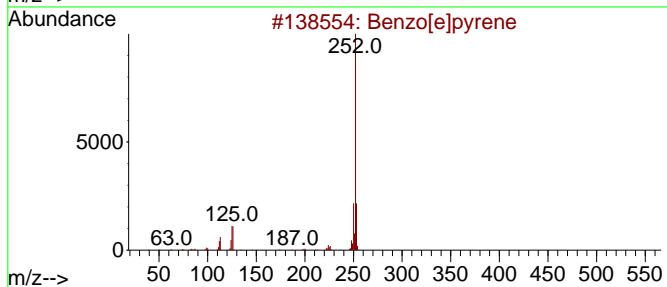
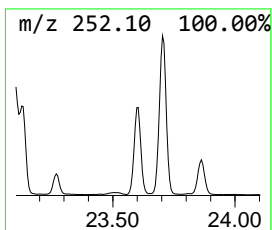
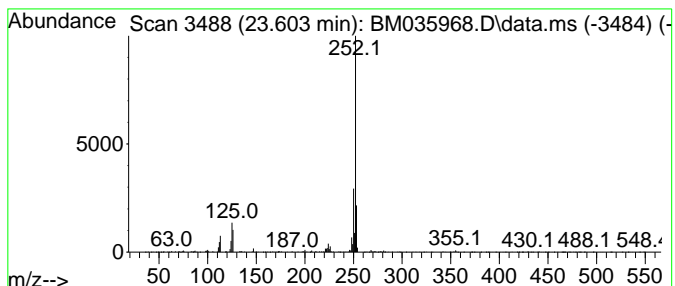
Quant Method : Z:\svoasrv\HPCHEM1\BNA_M\Methods\SFAM-EPA-BM072522.M
 Quant Title : SVOA CALIBRATION

TIC Library : C:\Database\NIST20.L
 TIC Integration Parameters: LSCINT.P

 Peak Number 11 Benzo[e]pyrene Concentration Rank 3

R.T.	EstConc	Area	Relative to ISTD	R.T.
23.603	4.19 ng/ul	721363	Perylene-d12	23.809

Hit#	of 5	Tentative ID	MW	MolForm	CAS#	Qual
1		Benzo[e]pyrene	252	C20H12	000192-97-2	94
2		Benzo[a]pyrene	252	C20H12	000050-32-8	94
3		Perylene	252	C20H12	000198-55-0	93
4		Benzo[b]fluoranthene	252	C20H12	000205-99-2	90
5		Benzo[k]fluoranthene	252	C20H12	000207-08-9	90



Data Path : Z:\svoasrv\HPCHEM1\BNA_M\Data\BM072722\
 Data File : BM035968.D
 Acq On : 28 Jul 2022 02:19
 Operator : CG/JU
 Sample : N3741-11
 Misc :
 ALS Vial : 24 Sample Multiplier: 1

Instrument :
 BNA_M
 ClientSampleId :
 H0B36

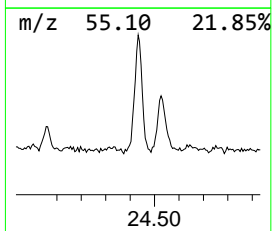
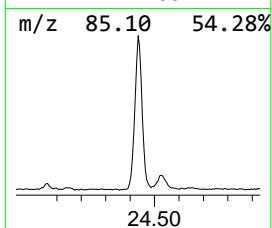
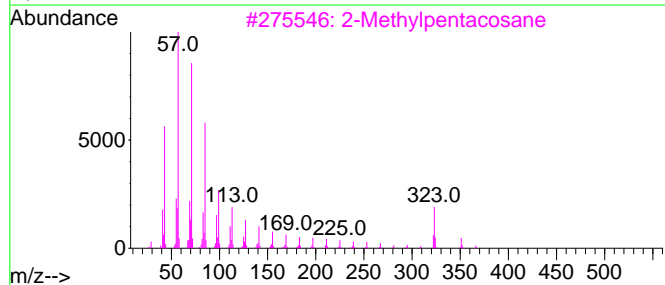
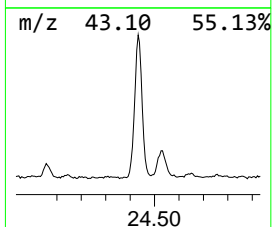
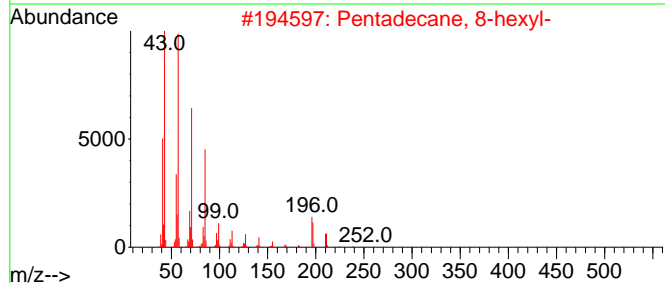
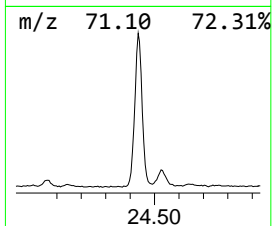
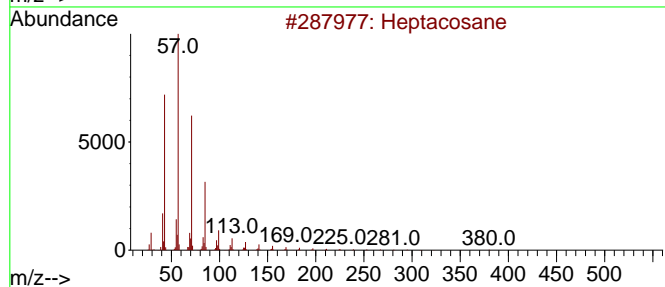
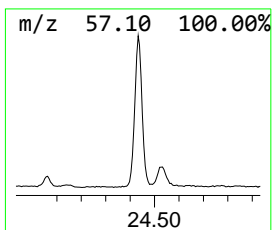
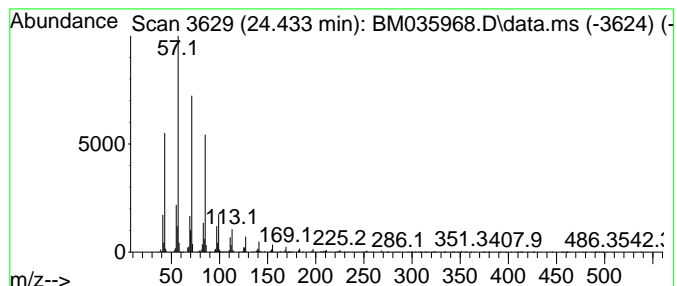
Quant Method : Z:\svoasrv\HPCHEM1\BNA_M\Methods\SFAM-EPA-BM072522.M
 Quant Title : SVOA CALIBRATION

TIC Library : C:\Database\NIST20.L
 TIC Integration Parameters: LSCINT.P

 Peak Number 12 (DEL) Alkane: Straight-Chai... Concentration Rank 1

R.T.	EstConc	Area	Relative to ISTD	R.T.
24.433	12.18 ng/ul	2096110	Perylene-d12	23.809

Hit#	of 5	Tentative ID	MW	MolForm	CAS#	Qual
1		Heptacosane	380	C27H56	000593-49-7	96
2		Pentadecane, 8-hexyl-	296	C21H44	013475-75-7	94
3		2-Methylpentacosane	366	C26H54	000629-87-8	94
4		Eicosane, 10-methyl-	296	C21H44	054833-23-7	93
5		Octacosane	394	C28H58	000630-02-4	91



Data Path : Z:\svoasrv\HPCHEM1\BNA_M\Data\BM072722\
 Data File : BM035968.D
 Acq On : 28 Jul 2022 02:19
 Operator : CG/JU
 Sample : N3741-11
 Misc :
 ALS Vial : 24 Sample Multiplier: 1

Instrument :
 BNA_M
 ClientSampleId :
 H0B36

Quant Method : Z:\svoasrv\HPCHEM1\BNA_M\Methods\SFAM-EPA-BM072522.M
 Quant Title : SVOA CALIBRATION

TIC Library : C:\Database\NIST0.L
 TIC Integration Parameters: LSCINT.P

TIC Top Hit name	RT	EstConc	Units	Response	--Internal Standard--			
					#	RT	Resp	Conc
Furan, tetrahyd...	3.810	2.1	ng/ul	222252	1	7.881	2089090	20.0
Anthracene, 1-m...	18.180	2.1	ng/ul	417563	4	17.257	3930020	20.0
4H-Cyclopenta[d...	18.333	3.0	ng/ul	579737	4	17.257	3930020	20.0
1-Octadecanol	19.015	4.1	ng/ul	799450	4	17.257	3930020	20.0
12-Octadecenoic...	19.110	4.0	ng/ul	790405	4	17.257	3930020	20.0
unknown-01	20.527	4.0	ng/ul	1291640	5	21.439	6400350	20.0
5-Bromo-4-oxo-4...	21.009	4.3	ng/ul	1373040	5	21.439	6400350	20.0
Ethanol, 2-(tet...	21.151	3.6	ng/ul	1142660	5	21.439	6400350	20.0
Benz[a]anthrace...	22.009	2.0	ng/ul	645301	5	21.439	6400350	20.0
Eicosanal-	22.792	3.4	ng/ul	586857	6	23.809	3442820	20.0
Benzo[e]pyrene	23.603	4.2	ng/ul	721363	6	23.809	3442820	20.0
(DEL) Alkane: S...	24.433	12.2	ng/ul	2096110	6	23.809	3442820	20.0