

Data Path : Z:\HPCHEM1\BNA M\DATA\BM073016\
 Data File : BM006778.D
 Acq On : 30 Jul 2016 18:01
 Operator : UM/SJ
 Sample : H4190-22MSD
 Misc :
 ALS Vial : 41 Sample Multiplier: 1

Instrument :
 BNA_M
 ClientSampleId :

Quant Time: Aug 01 04:26:13 2016
 Quant Method : Z:\HPCHEM1\BNA M\METHODS\SOM02.2-EPA-BM072016.M
 Quant Title : SVOA CALIBRATION
 QLast Update : Sat Jul 30 01:37:26 2016
 Response via : Initial Calibration

Internal Standards	R.T.	QIon	Response	Conc	Units	Dev(Min)
1) 1,4-Dichlorobenzene-d4	7.60	152	202507	20.00	ng/ul	0.00
7) Naphthalene-d8	10.38	136	857665	20.00	ng/ul	0.00
15) Acenaphthene-d10	14.26	164	467000	20.00	ng/ul	0.00
23) Phenanthrene-d10	17.01	188	1040764	20.00	ng/ul	0.00
29) Chrysene-d12	21.21	240	1211979	20.00	ng/ul	0.00
34) Perylene-d12	23.41	264	1260565	20.00	ng/ul	0.00

System Monitoring Compounds

2) 1,4-Dioxane-d8	3.13	96	1930	0.39	ng/uL	0.00
3) Phenol-d5	6.79	99	86708	5.03	ng/ul	0.00
4) Bis-(2-Chloroethyl)ether-d	6.95	67	68087	6.38	ng/ul	0.00
5) 2-Chlorophenol-d4	7.14	132	67577	4.91	ng/ul	0.00
6) 4-Methylphenol-d8	8.32	113	74265	5.56	ng/ul	0.00
8) Nitrobenzene-d5	8.76	128	50708	7.81	ng/ul	0.00
9) 2-Nitrophenol-d4	9.47	143	59314	8.59	ng/ul	0.00
10) 2,4-Dichlorophenol-d3	10.02	165	107284	8.22	ng/ul	0.00
12) 4-Chloroaniline-d4	10.53	131	116971	8.14	ng/ul	0.00
16) Dimethylphthalate-d6	13.67	166	365151	9.97	ng/ul	0.00
17) Acenaphthylene-d8	13.95	160	460772	9.86	ng/ul	0.00
20) 4-Nitrophenol-d4	14.49	143	51341	8.07	ng/ul	0.00
21) Fluorene-d10	15.26	176	319208	9.75	ng/ul	0.00
24) 4,6-Dinitro-2-methylphenol	15.40	200	37209	6.89	ng/ul	0.00
26) Anthracene-d10	17.11	188	457879	9.27	ng/ul	0.00
30) Pyrene-d10	19.41	212	620121	11.23	ng/ul	0.00
37) Benzo(a)pyrene-d12	23.27	264	933118	16.09	ng/ul	-0.01

Target Compounds

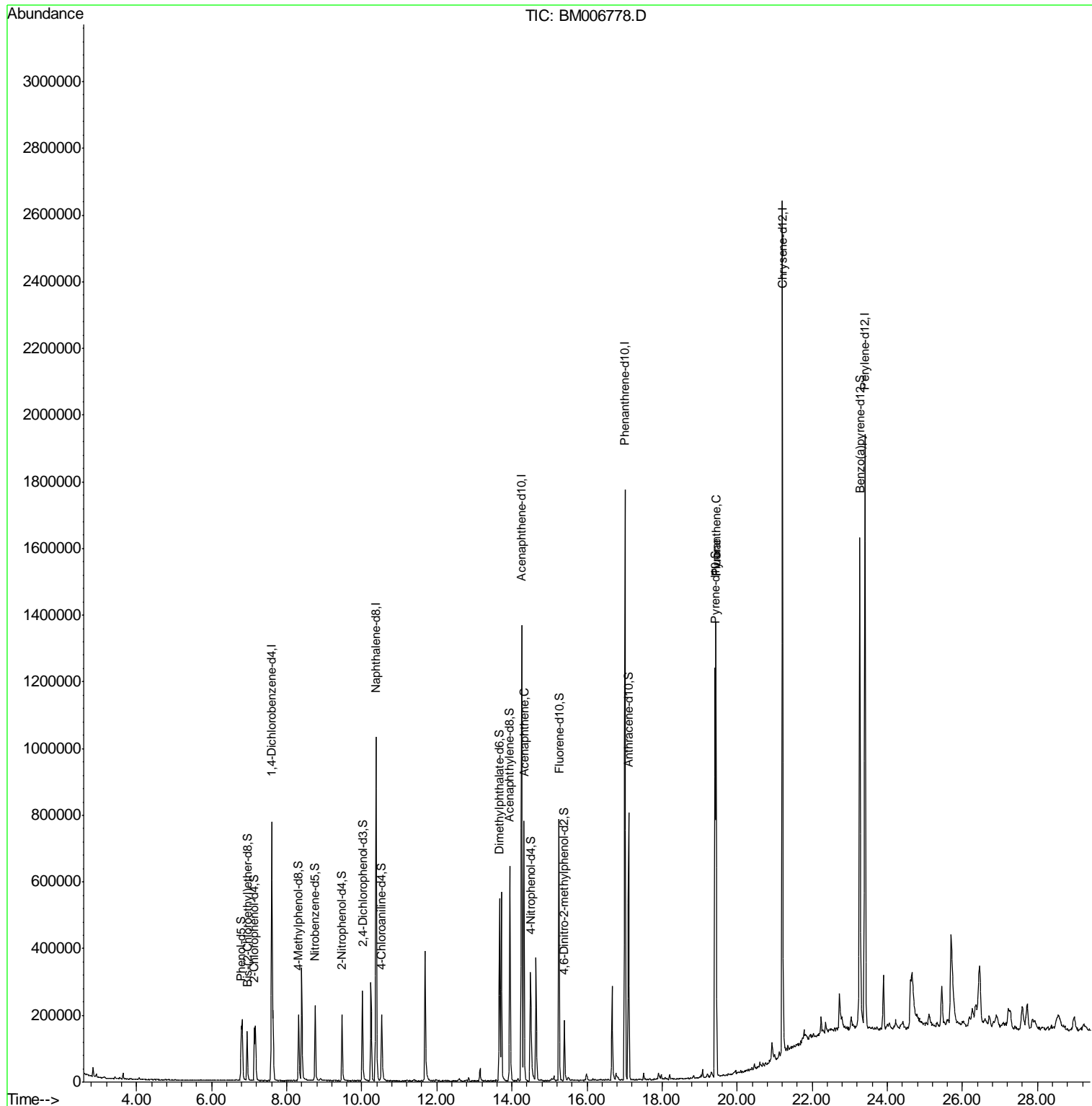
Target Compounds	R.T.	QIon	Response	Conc	Units	Ovalue
19) Acenaphthene	14.32	153	321153	9.98	ng/ul	95
28) Fluoranthene	19.44	202	808164	11.75	ng/ul	96
31) Pyrene	19.44	202	808164	11.01	ng/ul	97

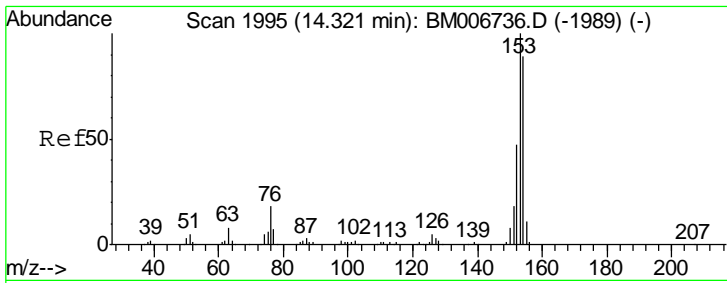
(#) = qualifier out of range (m) = manual integration (+) = signals summed

Data Path : Z:\HPCHEM1\BNA M\DATA\BM073016\
 Data File : BM006778.D
 Acq On : 30 Jul 2016 18:01
 Operator : UM/SJ
 Sample : H4190-22MSD
 Misc :
 ALS Vial : 41 Sample Multiplier: 1

Instrument :
 BNA_M
 ClientSampled :

Quant Time: Aug 01 04:26:13 2016
 Quant Method : Z:\HPCHEM1\BNA M\METHODS\SOM02.2-EPA-BM072016.M
 Quant Title : SVOA CALIBRATION
 QLast Update : Sat Jul 30 01:37:26 2016
 Response via : Initial Calibration

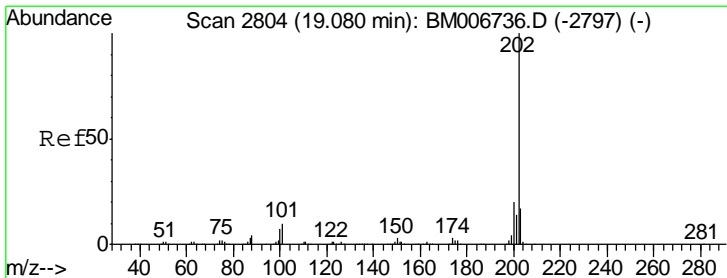
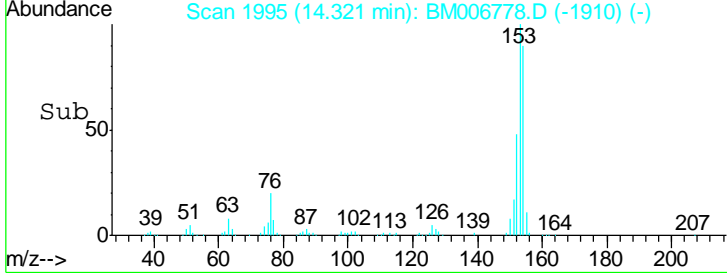
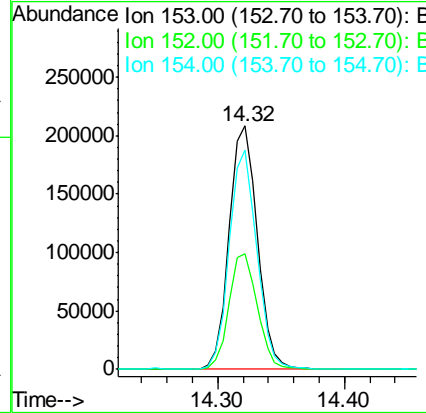
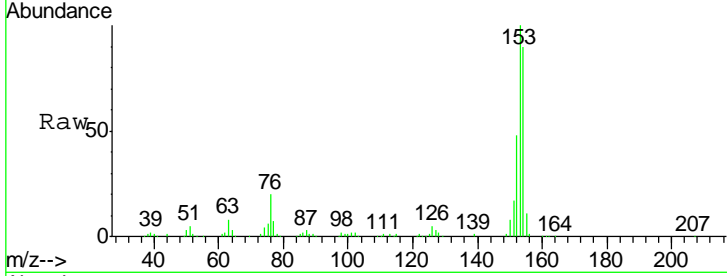




#19
 Acenaphthene
 Concen: 9.98 ng/ul
 RT: 14.32 min Scan# 1995
 Delta R.T. 0.00 min
 Lab File: BM006778.D
 Acq: 30 Jul 2016 18:01

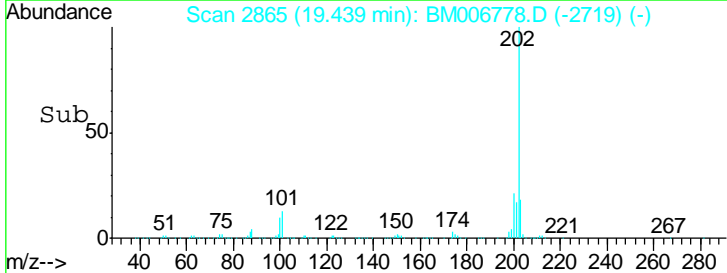
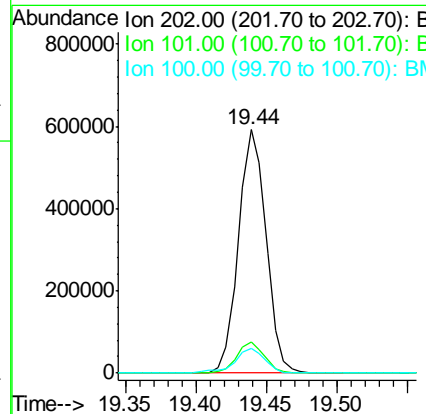
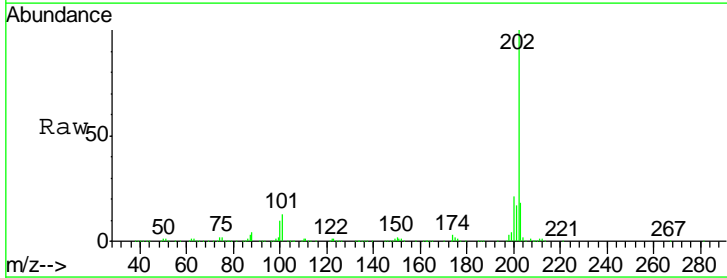
Instrument :
 BNA_M
 ClientSampled :

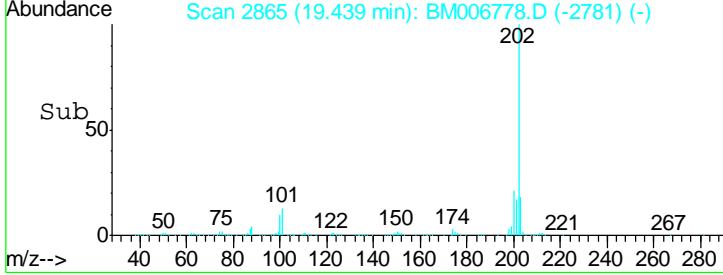
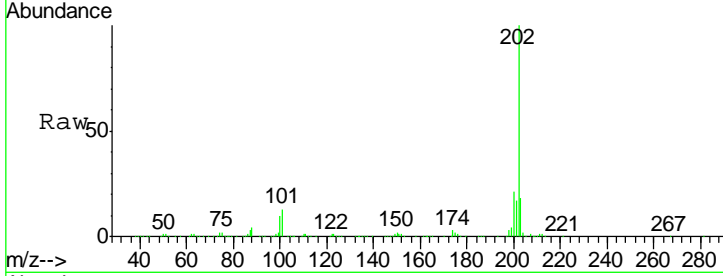
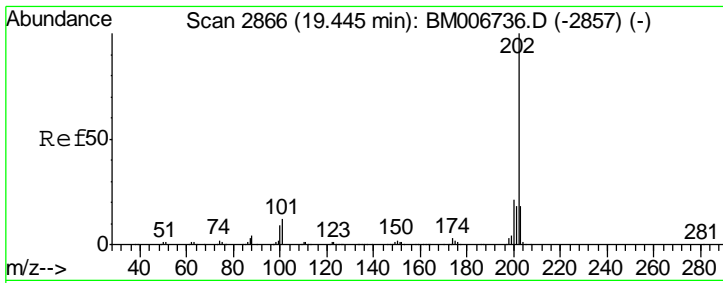
Tgt Ion	Resp	Lower	Upper
153	321153		
152	47.6	36.5	54.7
154	89.9	67.3	100.9



#28
 Fluoranthene
 Concen: 11.75 ng/ul
 RT: 19.44 min Scan# 2865
 Delta R.T. 0.36 min
 Lab File: BM006778.D
 Acq: 30 Jul 2016 18:01

Tgt Ion	Resp	Lower	Upper
202	808164		
101	12.8	8.9	13.3
100	10.0	7.0	10.4





#31
 Pyrene
 Concen: 11.01 ng/ul
 RT: 19.44 min Scan# 2865
 Delta R.T. -0.01 min
 Lab File: BM006778.D
 Acq: 30 Jul 2016 18:01

Instrument :
 BNA_M
 ClientSampled :

Tot Ion	Ion	Ratio	Lower	Upper
202	100			
101	12.8	9.8	14.8	
100	10.0	9.3	13.9	

