

Data Path : Z:\svoasrv\HPCHEM1\BNA_M\Data\BM080324\
 Data File : BM046966.D
 Acq On : 03 Aug 2024 15:28
 Operator : MA/JU
 Sample : P3276-06
 Misc :
 ALS Vial : 12 Sample Multiplier: 1

Instrument :
 BNA_M
 ClientSampleId :
 E20H5

Integration Parameters: LSCINT.P

Integrator: RTE
 Smoothing : OFF Filtering: 5
 Sampling : 1 Min Area: 0.1 % of largest Peak
 Start Thrs: 0.2 Max Peaks: 100
 Stop Thrs : 0 Peak Location: TOP

If leading or trailing edge < 100 prefer < Baseline drop else tangent >
 Peak separation: 5

Method : Z:\svoasrv\HPCHEM1\BNA_M\Methods\SFAM-EPA-BM080224.MA.M
 Title : SVOA CALIBRATION

Signal : TIC: BM046966.D\data.ms

peak #	R.T. min	first scan	max scan	last scan	PK TY	peak height	corr. area	corr. % max.	% of total
1	2.946	8	10	15	rVB6	11915	14761	0.49%	0.042%
2	3.023	20	23	31	rVB	27478	39680	1.33%	0.114%
3	3.287	65	68	78	rBV	42725	59529	1.99%	0.171%
4	3.417	86	90	104	rBV	277743	411118	13.74%	1.182%
5	3.593	118	120	122	rBV3	3688	3630	0.12%	0.010%
6	3.711	137	140	144	rVB2	12399	13407	0.45%	0.039%
7	3.781	150	152	157	rVB6	2718	3330	0.11%	0.010%
8	3.993	186	188	192	rBV5	3472	3447	0.12%	0.010%
9	4.252	229	232	235	rBV5	3019	4382	0.15%	0.013%
10	4.722	310	312	315	rVB4	3077	2997	0.10%	0.009%
11	5.081	371	373	379	rVB7	2400	3514	0.12%	0.010%
12	5.540	448	451	457	rBV3	9159	14984	0.50%	0.043%
13	6.005	527	530	533	rBV5	2983	3305	0.11%	0.010%
14	6.252	568	572	573	rVB4	2699	3132	0.10%	0.009%
15	6.434	599	603	604	rBV4	2624	3499	0.12%	0.010%
16	6.458	604	607	613	rVV6	6194	13906	0.46%	0.040%
17	6.605	625	632	641	rBV	444280	680321	22.74%	1.956%
18	6.758	651	658	667	rVB	356030	535054	17.88%	1.539%
19	6.940	682	689	697	rBV	441954	692231	23.13%	1.990%
20	7.040	704	706	713	rVB6	4891	8134	0.27%	0.023%
21	7.346	755	758	760	rBV4	2955	3481	0.12%	0.010%
22	7.399	760	767	774	rVV	821006	1262434	42.19%	3.630%
23	7.499	779	784	791	rVB8	9045	19961	0.67%	0.057%
24	7.734	819	824	830	rBV4	13933	29658	0.99%	0.085%
25	8.016	867	872	877	rVB8	2311	4465	0.15%	0.013%
26	8.116	883	889	898	rBV	525112	830932	27.77%	2.389%
27	8.305	916	921	923	rBV6	2583	3523	0.12%	0.010%
28	8.546	954	962	971	rBV	395864	646203	21.60%	1.858%
29	8.699	985	988	989	rBV2	3308	3233	0.11%	0.009%
30	8.852	1011	1014	1015	rBV3	3034	3024	0.10%	0.009%
31	8.893	1018	1021	1024	rBV5	2956	3450	0.12%	0.010%
32	8.999	1034	1039	1043	rVB7	6395	11055	0.37%	0.032%
33	9.128	1053	1061	1070	rBV2	35998	60879	2.03%	0.175%
34	9.257	1076	1083	1090	rBV	345191	549754	18.37%	1.581%
35	9.393	1103	1106	1110	rVB5	2571	3895	0.13%	0.011%
36	9.522	1125	1128	1129	rBV3	3468	3648	0.12%	0.010%

Data Path : Z:\svoasrv\HPCHEM1\BNA_M\Data\BM080324\
 Data File : BM046966.D
 Acq On : 03 Aug 2024 15:28
 Operator : MA/JU
 Sample : P3276-06
 Misc :
 ALS Vial : 12 Sample Multiplier: 1

Instrument :
 BNA_M
 ClientSampleId :
 E20H5

Integration Parameters: LSCINT.P

Integrator: RTE
 Smoothing : OFF Filtering: 5
 Sampling : 1 Min Area: 0.1 % of largest Peak
 Start Thrs: 0.2 Max Peaks: 100
 Stop Thrs : 0 Peak Location: TOP

If leading or trailing edge < 100 prefer < Baseline drop else tangent >
 Peak separation: 5

Method : Z:\svoasrv\HPCHEM1\BNA_M\Methods\SFAM-EPA-BM080224.MA.M
 Title : SVOA CALIBRATION

37	9.793	1163	1174	1184	rBV	551225	892018	29.81%	2.565%
38	9.975	1202	1205	1207	rBV4	2592	3157	0.11%	0.009%
39	10.157	1228	1236	1244	rBV	1098891	1747304	58.39%	5.024%
40	10.304	1254	1261	1273	rBV	504709	854898	28.57%	2.458%
41	10.734	1330	1334	1340	rBV8	7342	15349	0.51%	0.044%
42	10.916	1359	1365	1374	rBV	49255	95478	3.19%	0.275%
43	11.304	1429	1431	1434	rVB3	2894	3403	0.11%	0.010%
44	11.622	1481	1485	1488	rBV5	2850	4785	0.16%	0.014%
45	11.757	1504	1508	1513	rVB3	9193	14820	0.50%	0.043%
46	11.828	1516	1520	1523	rBV4	2810	4989	0.17%	0.014%
47	11.893	1525	1531	1533	rVB6	2530	4679	0.16%	0.013%
48	12.051	1556	1558	1562	rVB5	2489	3044	0.10%	0.009%
49	12.898	1699	1702	1707	rVB5	6915	7968	0.27%	0.023%
50	13.481	1795	1801	1814	rBV	945850	1316986	44.01%	3.787%
51	13.639	1826	1828	1832	rBV5	2265	3410	0.11%	0.010%
52	13.745	1839	1846	1854	rBV	1047742	1552876	51.90%	4.465%
53	13.881	1865	1869	1872	rBV4	3740	4821	0.16%	0.014%
54	13.916	1872	1875	1880	rVB6	2447	4352	0.15%	0.013%
55	14.057	1892	1899	1907	rBV	1662386	2344946	78.37%	6.743%
56	14.298	1934	1940	1955	rBV	424600	757510	25.32%	2.178%
57	14.398	1955	1957	1961	rVB5	3087	3770	0.13%	0.011%
58	14.434	1961	1963	1967	rBV5	2383	3383	0.11%	0.010%
59	14.892	2037	2041	2048	rBV6	5924	12483	0.42%	0.036%
60	14.957	2048	2052	2055	rVV6	4839	6403	0.21%	0.018%
61	15.063	2063	2070	2082	rVB	1333394	1937075	64.74%	5.570%
62	15.198	2087	2093	2101	rVV	371232	523722	17.50%	1.506%
63	15.257	2101	2103	2107	rVV4	6773	8533	0.29%	0.025%
64	15.298	2107	2110	2114	rVB5	5334	7751	0.26%	0.022%
65	15.457	2133	2137	2140	rVB5	3637	4747	0.16%	0.014%
66	15.516	2144	2147	2150	rBV5	4535	7896	0.26%	0.023%
67	15.651	2166	2170	2175	rVB8	4355	7500	0.25%	0.022%
68	15.822	2195	2199	2202	rVV6	5202	6386	0.21%	0.018%
69	15.857	2202	2205	2210	rVB7	3789	4565	0.15%	0.013%
70	15.939	2217	2219	2223	rVB5	2565	3025	0.10%	0.009%
71	15.969	2223	2224	2226	rBV2	3488	3415	0.11%	0.010%
72	16.269	2272	2275	2277	rBV4	3505	3182	0.11%	0.009%
73	16.339	2284	2287	2293	rVB7	3293	5843	0.20%	0.017%
74	16.404	2293	2298	2302	rBV7	7476	12274	0.41%	0.035%
75	16.569	2324	2326	2328	rBV2	3131	3020	0.10%	0.009%
76	16.610	2329	2333	2337	rVV6	6852	11053	0.37%	0.032%

Data Path : Z:\svoasrv\HPCHEM1\BNA_M\Data\BM080324\
 Data File : BM046966.D
 Acq On : 03 Aug 2024 15:28
 Operator : MA/JU
 Sample : P3276-06
 Misc :
 ALS Vial : 12 Sample Multiplier: 1

Instrument :
 BNA_M
 ClientSampleId :
 E20H5

Integration Parameters: LSCINT.P

Integrator: RTE
 Smoothing : OFF Filtering: 5
 Sampling : 1 Min Area: 0.1 % of largest Peak
 Start Thrs: 0.2 Max Peaks: 100
 Stop Thrs : 0 Peak Location: TOP

If leading or trailing edge < 100 prefer < Baseline drop else tangent >
 Peak separation: 5

Method : Z:\svoasrv\HPCHEM1\BNA_M\Methods\SFAM-EPA-BM080224.MA.M
 Title : SVOA CALIBRATION

77	16.757	2355	2358	2359	rBV3	4369	4157	0.14%	0.012%
78	16.816	2359	2368	2379	rVV	1994433	2831904	94.64%	8.143%
79	16.916	2379	2385	2396	rVV	1560709	2110910	70.54%	6.070%
80	17.039	2399	2406	2411	rVB10	14066	22615	0.76%	0.065%
81	17.080	2411	2413	2416	rBV4	4545	4155	0.14%	0.012%
82	17.133	2419	2422	2426	rBV4	4052	6864	0.23%	0.020%
83	17.363	2457	2461	2462	rBV4	4856	6543	0.22%	0.019%
84	17.533	2488	2490	2494	rVB4	8008	7725	0.26%	0.022%
85	17.757	2523	2528	2535	rBV	177705	254151	8.49%	0.731%
86	18.786	2700	2703	2708	rBV4	20164	25887	0.87%	0.074%
87	18.863	2713	2716	2719	rVB2	20746	24325	0.81%	0.070%
88	19.057	2745	2749	2757	rBV2	69435	112404	3.76%	0.323%
89	19.227	2772	2778	2786	rVB	1915331	2470400	82.56%	7.103%
90	20.792	3040	3044	3056	rBV2	229231	387559	12.95%	1.114%
91	21.051	3083	3088	3097	rBV	2254241	2992293	100.00%	8.604%
92	23.586	3512	3519	3530	rVB	1070367	2412052	80.61%	6.936%
93	23.768	3543	3550	3558	rVB	1369797	2936687	98.14%	8.444%

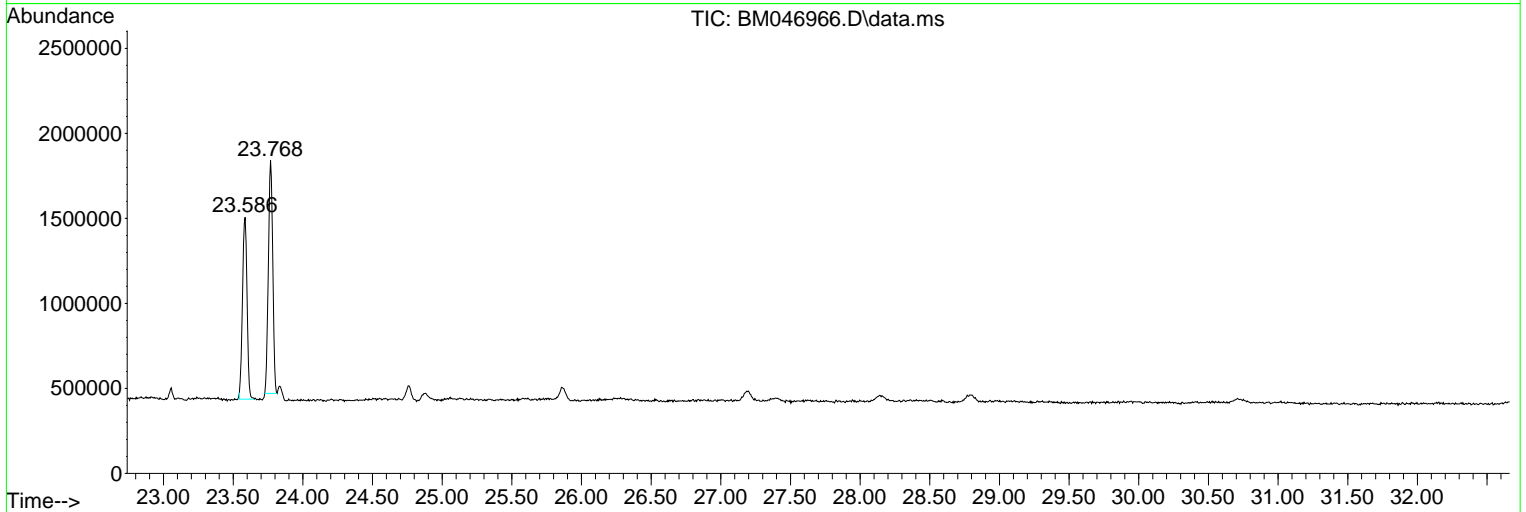
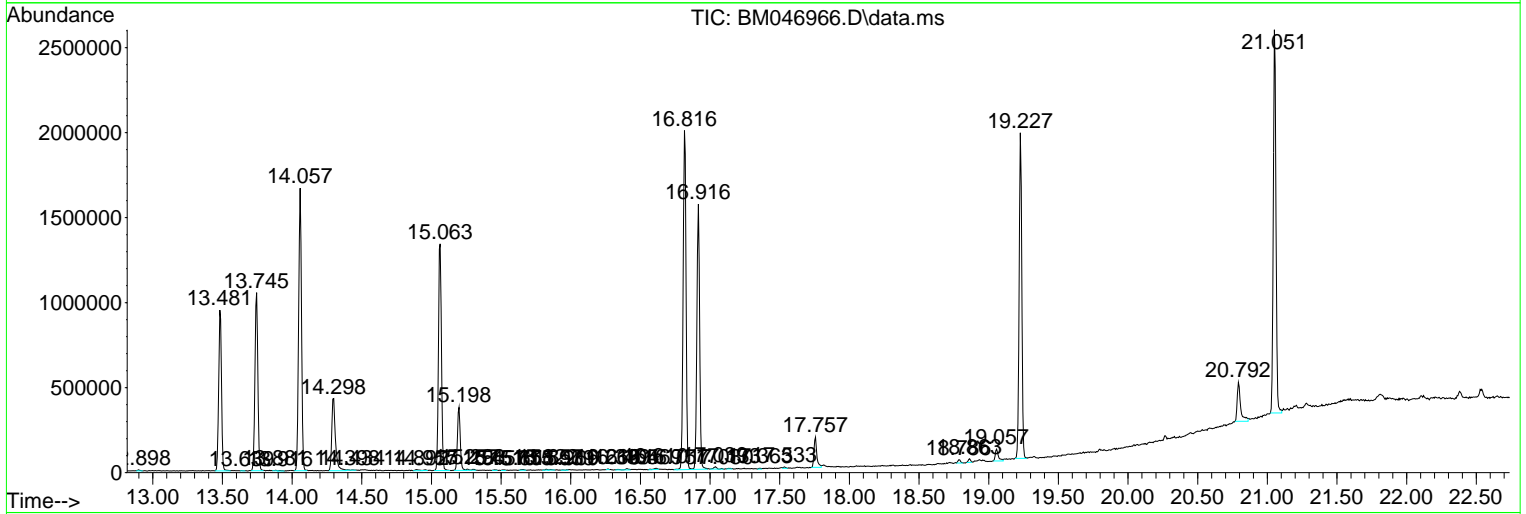
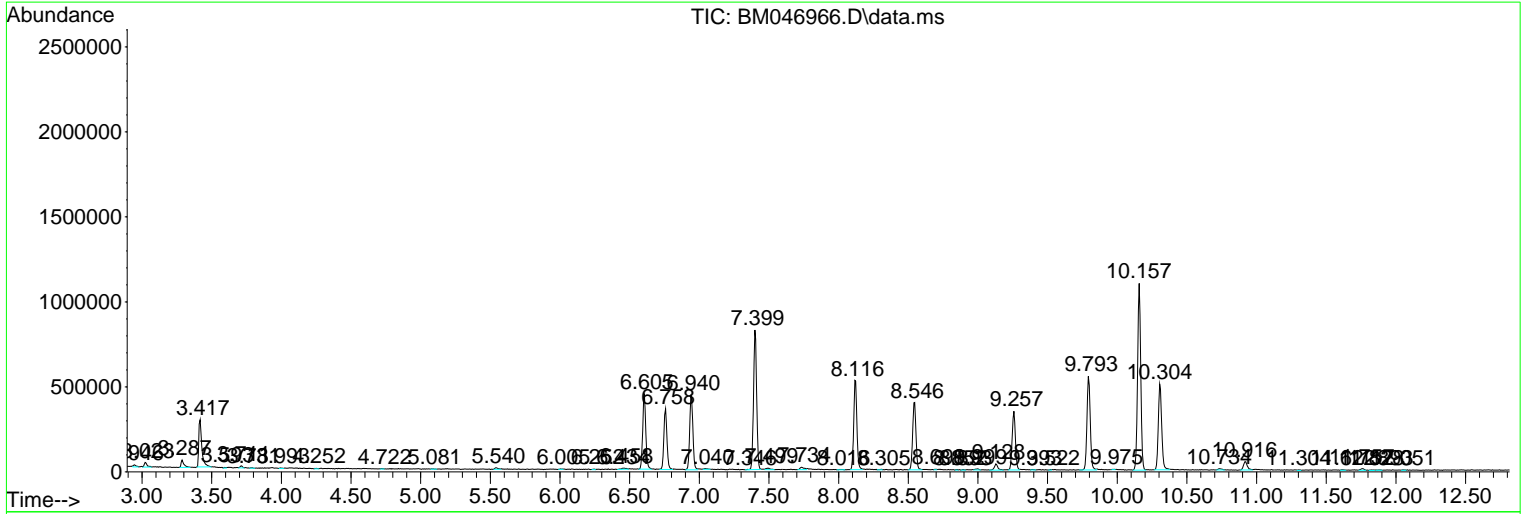
Sum of corrected areas: 34777406

Data Path : Z:\svoasrv\HPCHEM1\BNA_M\Data\BM080324\
 Data File : BM046966.D
 Acq On : 03 Aug 2024 15:28
 Operator : MA/JU
 Sample : P3276-06
 Misc :
 ALS Vial : 12 Sample Multiplier: 1

Instrument :
 BNA_M
ClientSampleId :
 E20H5

Quant Method : Z:\svoasrv\HPCHEM1\BNA_M\Methods\SFAM-EPA-BM080224.MA.M
 Quant Title : SVOA CALIBRATION

TIC Library : C:\Database\NIST20.L
 TIC Integration Parameters: LSCINT.P



Data Path : Z:\svoasrv\HPCHEM1\BNA_M\Data\BM080324\
 Data File : BM046966.D
 Acq On : 03 Aug 2024 15:28
 Operator : MA/JU
 Sample : P3276-06
 Misc :
 ALS Vial : 12 Sample Multiplier: 1

Instrument :
 BNA_M
 ClientSampleId :
 E20H5

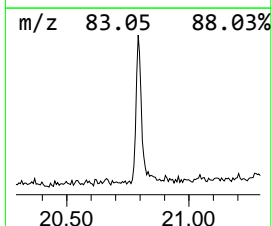
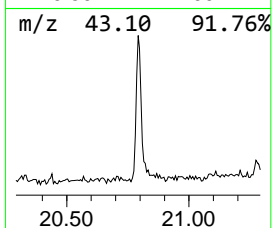
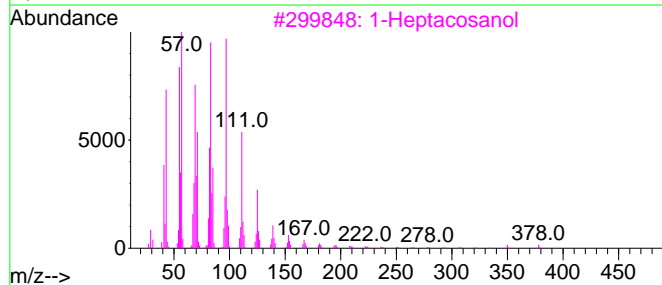
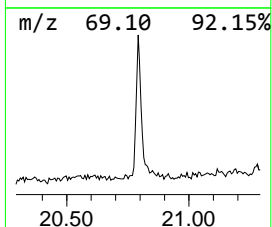
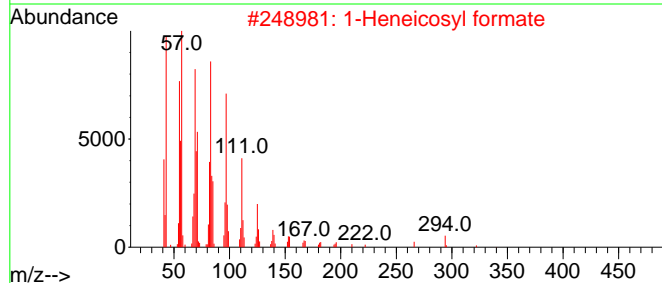
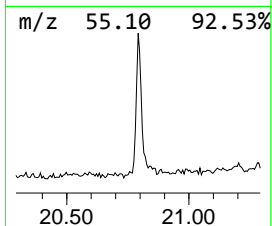
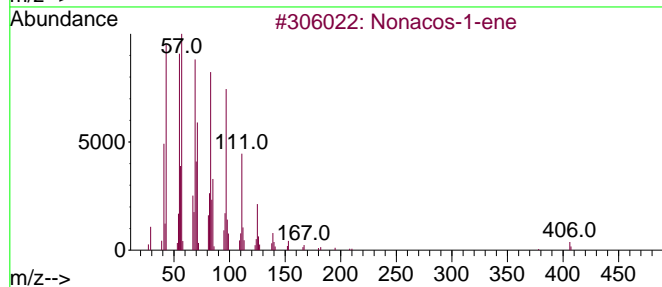
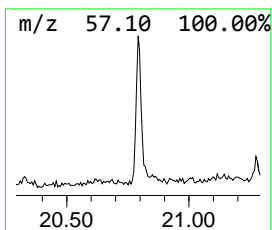
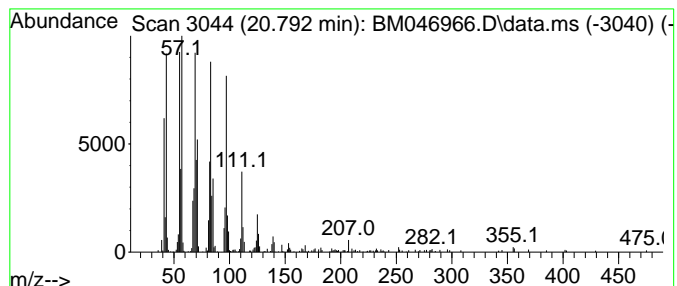
Quant Method : Z:\svoasrv\HPCHEM1\BNA_M\Methods\SFAM-EPA-BM080224.MA.M
 Quant Title : SVOA CALIBRATION

TIC Library : C:\Database\NIST20.L
 TIC Integration Parameters: LSCINT.P

 Peak Number 1 (DEL) Alkane: Straight-Chai... Concentration Rank 1

R.T.	EstConc	Area	Relative to ISTD	R.T.
20.792	2.59 ng/ul	387559	Chrysene-d12	21.051

Hit#	of 5	Tentative ID	MW	MolForm	CAS#	Qual
1		Nonacos-1-ene	406	C29H58	018835-35-3	95
2		1-Heneicosyl formate	340	C22H44O2	077899-03-7	94
3		1-Heptacosanol	396	C27H56O	002004-39-9	94
4		Heptafluorobutyric acid, pentade...	424	C19H31F7O2	959261-23-5	94
5		n-Nonadecanol-1	284	C19H40O	001454-84-8	94



Data Path : Z:\svoasrv\HPCHEM1\BNA_M\Data\BM080324\
Data File : BM046966.D
Acq On : 03 Aug 2024 15:28
Operator : MA/JU
Sample : P3276-06
Misc :
ALS Vial : 12 Sample Multiplier: 1

Instrument :
BNA_M
ClientSampleId :
E20H5

Quant Method : Z:\svoasrv\HPCHEM1\BNA_M\Methods\SFAM-EPA-BM080224.MA.M
Quant Title : SVOA CALIBRATION

TIC Library : C:\Database\NIST20.L
TIC Integration Parameters: LSCINT.P

TIC Top Hit name	RT	EstConc	Units	Response	--Internal Standard--			
					#	RT	Resp	Conc
(DEL) Alkane: S...	20.792	2.6	ng/u1	387559	5	21.051	2992290	20.0