

Data Path : Z:\HPCHEM1\BNA M\DATA\BM080416\
 Data File : BM006884.D
 Acq On : 05 Aug 2016 03:37
 Operator : UM/SJ
 Sample : H4224-03
 Misc :
 ALS Vial : 26 Sample Multiplier: 1

Instrument :
 BNA_M
 ClientSampleId :
 BDJL3

Integration Parameters: LSCINT.P

Integrator: RTE
 Smoothing : OFF
 Sampling : 1
 Start Thrs: 0.2
 Stop Thrs : 0

Filtering: 5
 Min Area: 1 % of largest Peak
 Max Peaks: 100
 Peak Location: TOP

If leading or trailing edge < 100 prefer < Baseline drop else tangent >
 Peak separation: 5

Method : Z:\HPCHEM1\BNA M\METHODS\SOM02.2-EPA-BM080316.M
 Title : SVOA CALIBRATION

Signal : TIC

peak #	R.T. min	first scan	max scan	last scan	PK TY	peak height	corr. area	corr. % max.	% of total
1	6.793	710	715	729	rBV2	447267	1160684	22.61%	2.209%
2	6.916	731	736	749	rVB	438410	783136	15.26%	1.490%
3	7.116	763	770	788	rBV2	645472	1243912	24.23%	2.367%
4	7.563	832	846	861	rBV	1174157	2156856	42.02%	4.104%
5	8.322	969	975	1002	rBV2	518459	1398558	27.25%	2.661%
6	8.734	1038	1045	1058	rBV	593420	1258862	24.52%	2.395%
7	9.451	1159	1167	1184	rBV2	468912	1136835	22.15%	2.163%
8	10.010	1255	1262	1288	rBV2	475118	1477288	28.78%	2.811%
9	10.339	1309	1318	1337	rBV	1542710	2902465	56.54%	5.523%
10	10.516	1341	1348	1363	rBV3	451933	1317394	25.66%	2.507%
11	13.639	1871	1879	1884	rBV	1295074	2096706	40.85%	3.990%
12	13.686	1884	1887	1907	rVB	601717	1212890	23.63%	2.308%
13	13.910	1919	1925	1941	rBV	1466555	2366045	46.09%	4.502%
14	14.216	1970	1977	1993	rBV2	2211750	3679081	71.67%	7.001%
15	14.563	2030	2036	2048	rBV5	135897	518497	10.10%	0.987%
16	15.221	2138	2148	2159	rBV	1864465	3017639	58.79%	5.742%
17	15.386	2171	2176	2186	rBV2	288726	609236	11.87%	1.159%
18	15.469	2188	2190	2196	rVB7	39323	55054	1.07%	0.105%
19	16.974	2440	2446	2457	rBV	3045579	4509016	87.84%	8.580%
20	17.074	2457	2463	2477	rVB2	1939043	3214028	62.61%	6.116%
21	19.380	2850	2855	2870	rBV	2458055	3716975	72.41%	7.073%
22	21.186	3157	3162	3171	rVB	3588101	5133104	100.00%	9.767%
23	23.233	3504	3510	3517	rVB2	1687467	3206952	62.48%	6.102%
24	23.368	3527	3533	3545	rVB	2293164	4382590	85.38%	8.339%

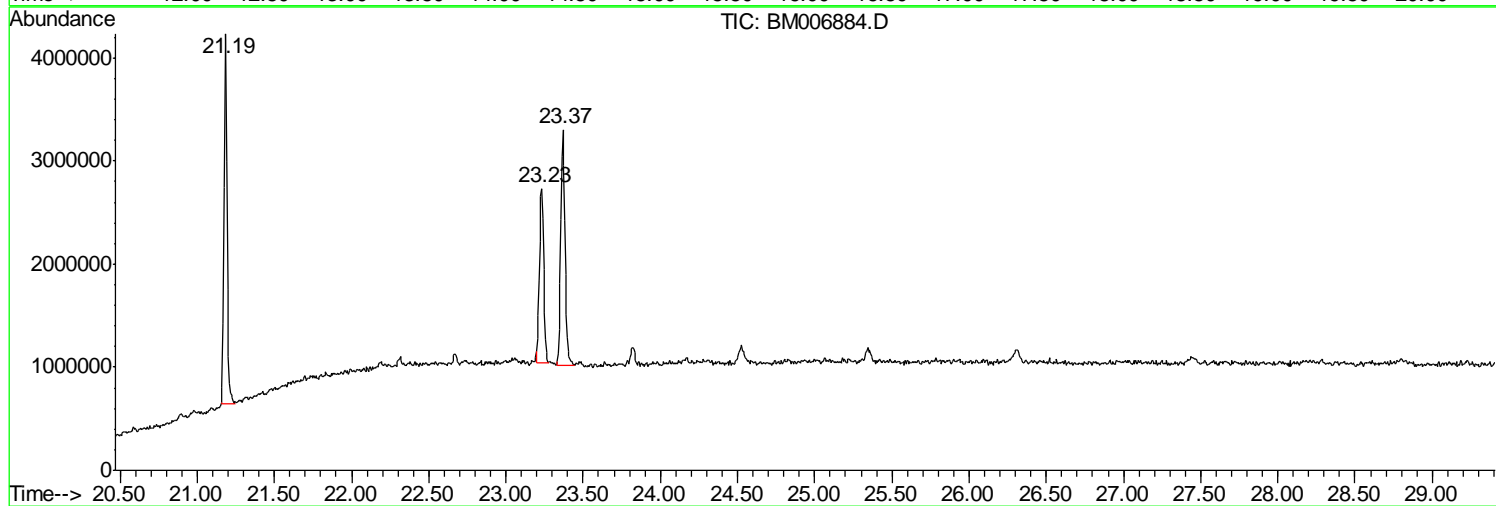
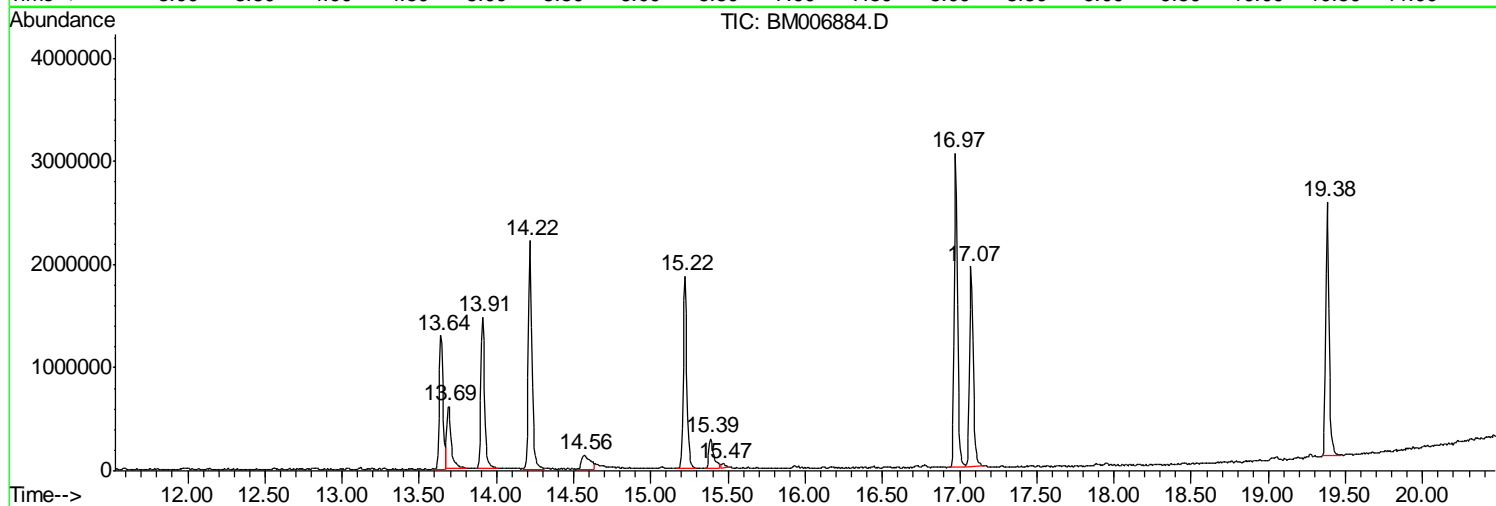
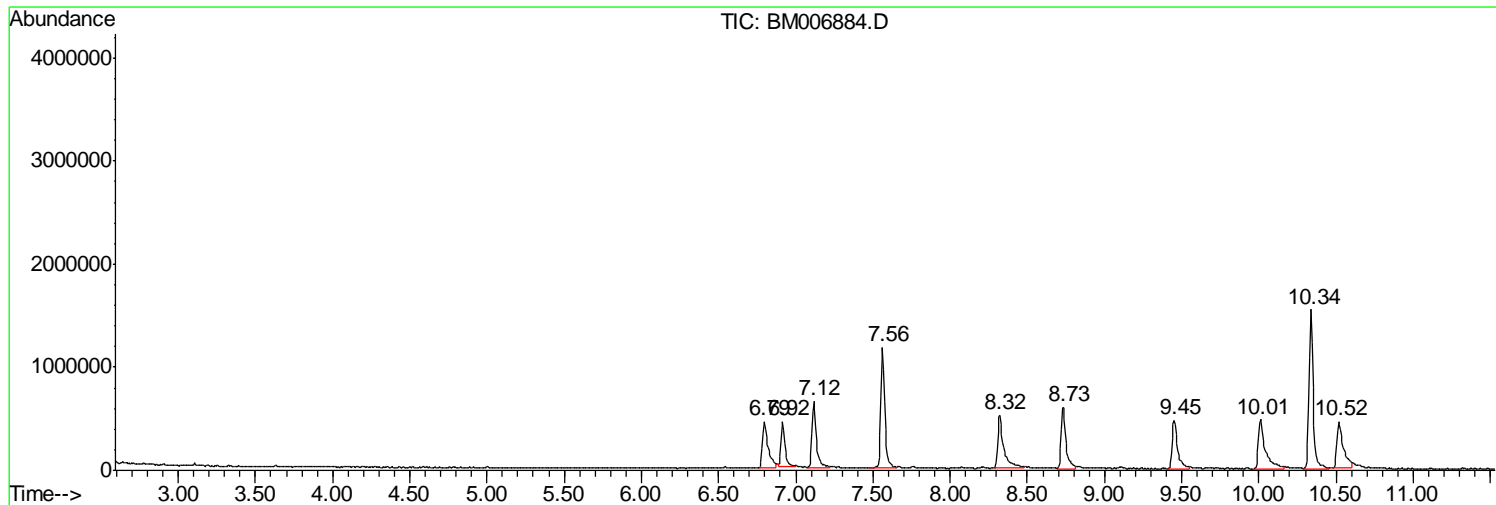
Sum of corrected areas: 52553803

Data Path : Z:\HPCHEM1\BNA M\DATA\BM080416\
Data File : BM006884.D
Acq On : 05 Aug 2016 03:37
Operator : UM/SJ
Sample : H4224-03
Misc :
ALS Vial : 26 Sample Multiplier: 1

Instrument :
BNA_M
ClientSampled :
BDJL3

Quant Method : Z:\HPCHEM1\BNA M\METHODS\SOM02.2-EPA-BM080316.M
Quant Title : SVOA CALIBRATION

TIC Library : C:\DATABASE\NIST11.L
TIC Integration Parameters: LSCINT.P



Data Path : Z:\HPCHEM1\BNA_M\DATA\BM080416\
Data File : BM006884.D
Acq On : 05 Aug 2016 03:37
Operator : UM/SJ
Sample : H4224-03
Misc :
ALS Vial : 26 Sample Multiplier: 1

Instrument :
BNA_M
ClientSampleId :
BDJL3

Quant Method : Z:\HPCHEM1\BNA_M\METHODS\SOM02.2-EPA-BM080316.M
Quant Title : SVOA CALIBRATION

TIC Library : C:\DATABASE\NIST11.L
TIC Integration Parameters: LSCINT.P

No Library Search Compounds Detected

Data Path : Z:\HPCHEM1\BNA_M\DATA\BM080416\
Data File : BM006884.D
Acq On : 05 Aug 2016 03:37
Operator : UM/SJ
Sample : H4224-03
Misc :
ALS Vial : 26 Sample Multiplier: 1

Instrument :
BNA_M
ClientSampleId :
BDJL3

Quant Method : Z:\HPCHEM1\BNA_M\METHODS\SOM02.2-EPA-BM080316.M
Quant Title : SVOA CALIBRATION

TIC Library : C:\DATABASE\NIST11.L
TIC Integration Parameters: LSCINT.P

TIC Top Hit name	RT	EstConc	Units	Response	--Internal Standard--			
					#	RT	Resp	Conc
