

Data Path : Z:\HPCHEM1\BNA\_M\DATA\BM080516\  
 Data File : BM006914.D  
 Acq On : 05 Aug 2016 23:41  
 Operator : UM/SJ  
 Sample : H4278-01  
 Misc :  
 ALS Vial : 22 Sample Multiplier: 1

Instrument :  
 BNA\_M  
 ClientSampled :  
 BDJR4

## Integration Parameters: LSCINT.P

Integrator: RTE  
 Smoothing : OFF Filtering: 5  
 Sampling : 1 Min Area: 1 % of largest Peak  
 Start Thrs: 0.2 Max Peaks: 100  
 Stop Thrs : 0 Peak Location: TOP

If leading or trailing edge < 100 prefer < Baseline drop else tangent >  
 Peak separation: 5

Method : Z:\HPCHEM1\BNA\_M\METHODS\SOM02.2-EPA-BM080316.M  
 Title : SVOA CALIBRATION

Signal : TIC

peak #	R.T. min	first scan	max scan	last scan	PK TY	peak height	corr. area	corr. % max.	% of total
1	2.763	25	30	36	rVB2	79772	136113	3.53%	0.320%
2	6.781	708	713	730	rBV	495944	1176185	30.47%	2.762%
3	6.910	730	735	748	rVB	418127	723525	18.74%	1.699%
4	7.110	763	769	784	rBV	606632	1130276	29.28%	2.655%
5	7.557	839	845	857	rBV	585578	1064937	27.59%	2.501%
6	8.304	966	972	988	rBV2	570883	1300851	33.70%	3.055%
7	8.722	1037	1043	1066	rBV	578291	1193149	30.91%	2.802%
8	9.445	1160	1166	1185	rBV2	456615	1023054	26.50%	2.403%
9	9.992	1253	1259	1277	rBV2	515281	1351621	35.01%	3.175%
10	10.333	1310	1317	1329	rBV	775321	1419657	36.78%	3.334%
11	10.504	1340	1346	1369	rBV	478325	1320714	34.21%	3.102%
12	13.633	1870	1878	1883	rBV	1363858	2098429	54.36%	4.929%
13	13.680	1883	1886	1902	rVB	581633	1071005	27.74%	2.515%
14	13.904	1918	1924	1936	rBV	1492426	2324032	60.20%	5.458%
15	14.216	1970	1977	1994	rVB2	1065756	1834918	47.53%	4.310%
16	14.533	2025	2031	2052	rBV2	184751	765181	19.82%	1.797%
17	15.068	2117	2122	2128	rBV2	27511	40638	1.05%	0.095%
18	15.215	2140	2147	2160	rVB	1878916	2959364	76.66%	6.951%
19	15.380	2169	2175	2186	rBV	330268	720337	18.66%	1.692%
20	15.463	2186	2189	2195	rVB7	40940	70027	1.81%	0.164%
21	15.933	2264	2269	2279	rBV3	34528	79046	2.05%	0.186%
22	16.974	2440	2446	2456	rBV2	1484206	2258654	58.51%	5.305%
23	17.074	2456	2463	2475	rVV	1939021	3169926	82.11%	7.445%
24	17.874	2593	2599	2604	rBV6	37335	73934	1.92%	0.174%
25	19.051	2795	2799	2804	rVB2	54963	87112	2.26%	0.205%
26	19.380	2849	2855	2867	rBV	2536802	3860350	100.00%	9.067%
27	21.086	3142	3145	3148	rBV2	71669	78016	2.02%	0.183%
28	21.180	3156	3161	3172	rBV	2024253	2818759	73.02%	6.620%
29	23.227	3503	3509	3522	rVB	1934584	3837030	99.40%	9.012%
30	23.368	3526	3533	3545	rVB2	1285850	2590332	67.10%	6.084%

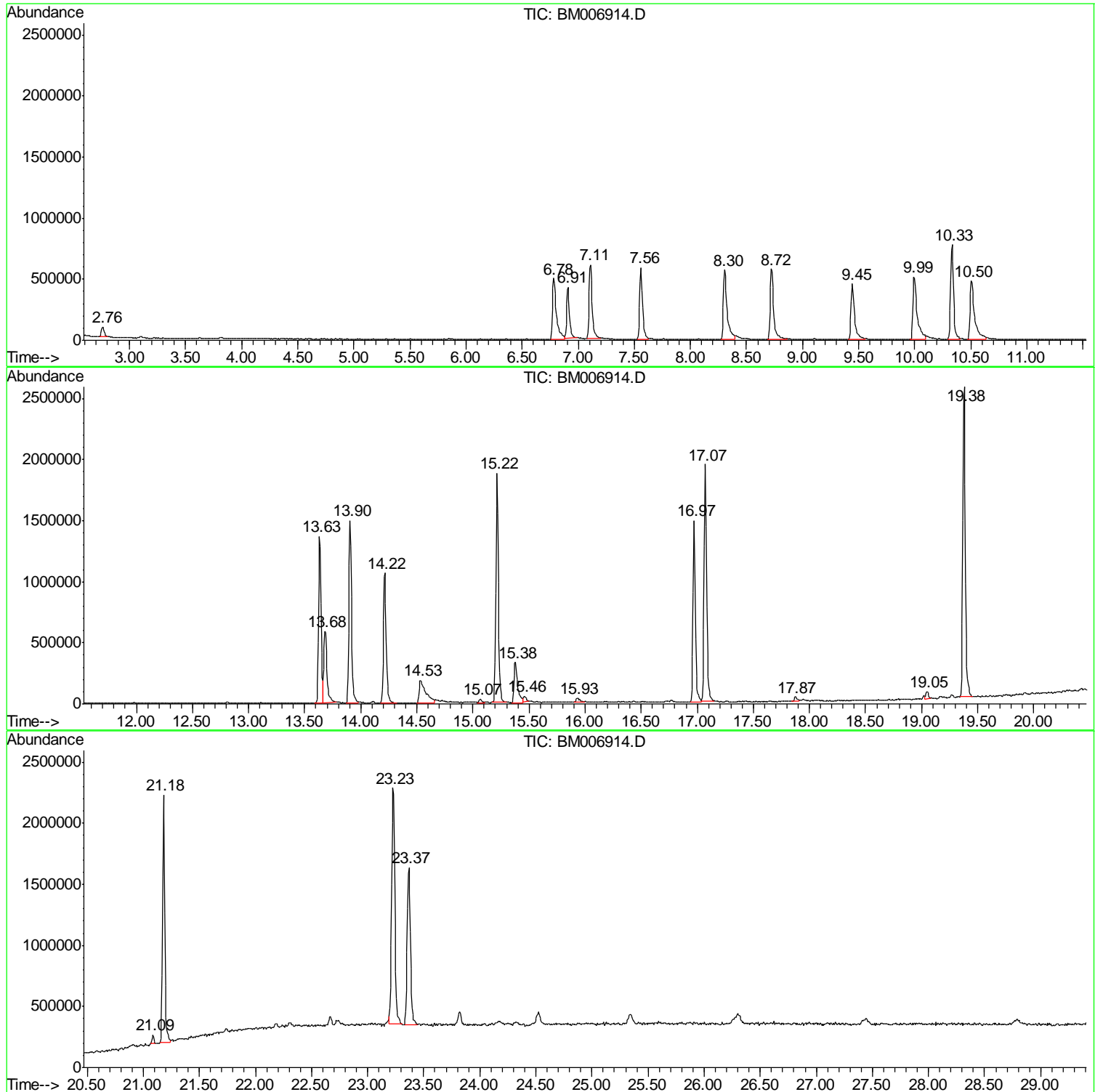
Sum of corrected areas: 42577172

Data Path : Z:\HPCHEM1\BNA\_M\DATA\BM080516\  
Data File : BM006914.D  
Acq On : 05 Aug 2016 23:41  
Operator : UM/SJ  
Sample : H4278-01  
Misc :  
ALS Vial : 22 Sample Multiplier: 1

Instrument :  
BNA\_M  
ClientSampled :  
BDJR4

Quant Method : Z:\HPCHEM1\BNA\_M\METHODS\SOM02.2-EPA-BM080316.M  
Quant Title : SVOA CALIBRATION

TIC Library : C:\DATABASE\NIST11.L  
TIC Integration Parameters: LSCINT.P



Data Path : Z:\HPCHEM1\BNA\_M\DATA\BM080516\  
 Data File : BM006914.D  
 Acq On : 05 Aug 2016 23:41  
 Operator : UM/SJ  
 Sample : H4278-01  
 Misc :  
 ALS Vial : 22 Sample Multiplier: 1

Instrument :  
 BNA\_M  
 ClientSampled :  
 BDJR4

Quant Method : Z:\HPCHEM1\BNA\_M\METHODS\SOM02.2-EPA-BM080316.M  
 Quant Title : SVOA CALIBRATION

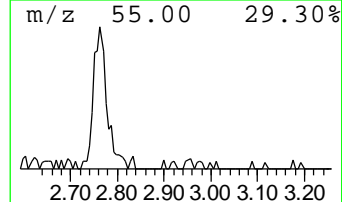
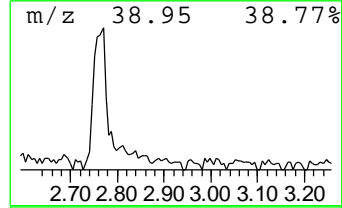
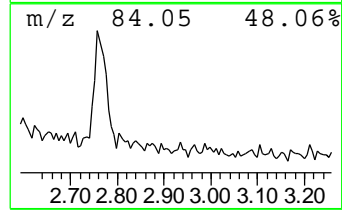
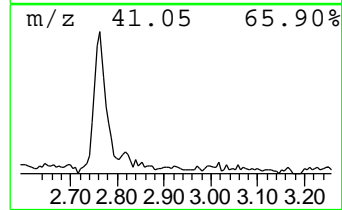
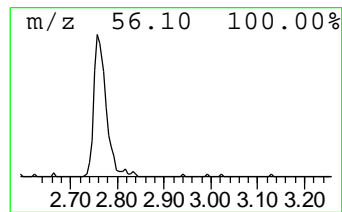
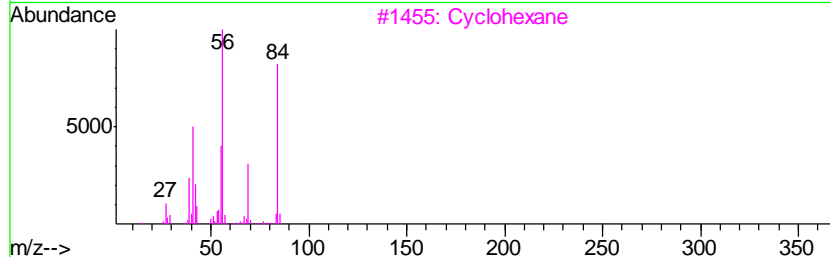
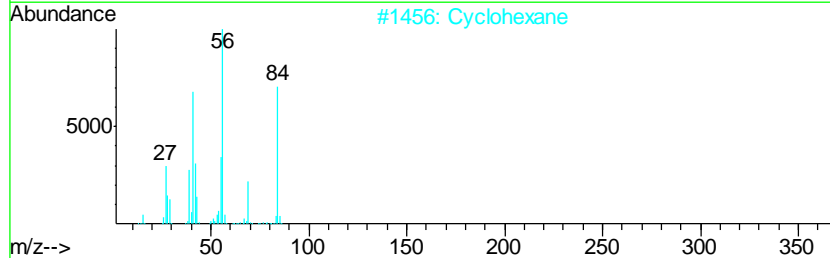
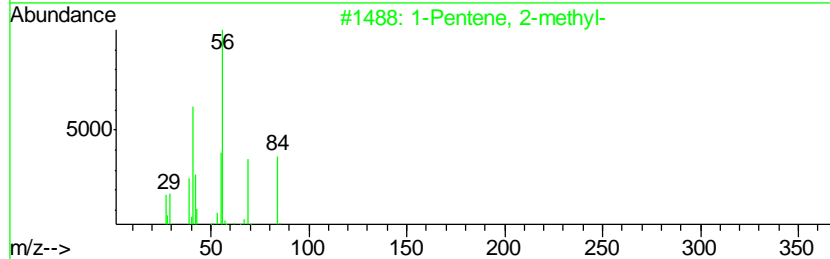
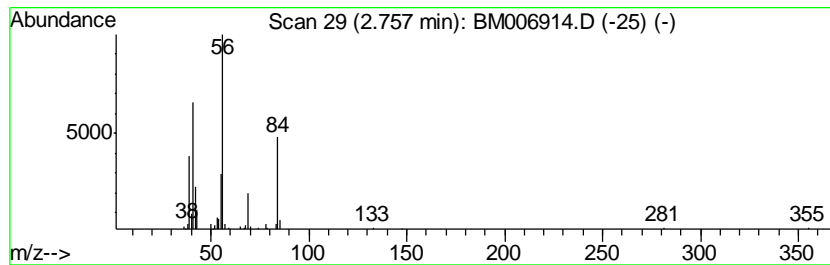
TIC Library : C:\DATABASE\NIST11.L  
 TIC Integration Parameters: LSCINT.P

\*\*\*\*\*  
 Peak Number 1 (DEL) Alkane: Cyclic2.76 Concentration Rank 1

R.T.	EstConc	Area	Relative to ISTD	R.T.
2.76	2.56 ng/ul	136113	1,4-Dichlorobenzene-d4	7.56

Hit#	of	Tentative ID	MW	MolForm	CAS#	Qual
1	5	1-Pentene, 2-methyl-	84	C6H12	000763-29-1	68
2		Cyclohexane	84	C6H12	000110-82-7	68
3		Cyclohexane	84	C6H12	000110-82-7	68
4		Cyclohexane	84	C6H12	000110-82-7	64
5		1-Propene, 2-methyl-	56	C4H8	000115-11-7	50



Data Path : Z:\HPCHEM1\BNA\_M\DATA\BM080516\  
Data File : BM006914.D  
Acq On : 05 Aug 2016 23:41  
Operator : UM/SJ  
Sample : H4278-01  
Misc :  
ALS Vial : 22 Sample Multiplier: 1

Instrument :  
BNA\_M  
ClientSampleId :  
BDJR4

Quant Method : Z:\HPCHEM1\BNA\_M\METHODS\SOM02.2-EPA-BM080316.M  
Quant Title : SVOA CALIBRATION

TIC Library : C:\DATABASE\NIST11.L  
TIC Integration Parameters: LSCINT.P

TIC Top Hit name	RT	EstConc	Units	Response	--Internal Standard--			
					#	RT	Resp	Conc
(DEL) Alkane: Cyc...	2.76	2.6	ng/ul	136113	1	7.56	1064940	20.0