

Data Path : Z:\svoasrv\HPCHEM1\BNA\_M\Data\BM080624\  
 Data File : BM047032.D  
 Acq On : 06 Aug 2024 21:16  
 Operator : RC/JU  
 Sample : P3328-11  
 Misc :  
 ALS Vial : 7 Sample Multiplier: 1

Instrument :  
 BNA\_M  
 ClientSampleId :  
 E20L4

Integration Parameters: LSCINT.P

Integrator: RTE  
 Smoothing : OFF Filtering: 5  
 Sampling : 1 Min Area: 0.1 % of largest Peak  
 Start Thrs: 0.2 Max Peaks: 100  
 Stop Thrs : 0 Peak Location: TOP

If leading or trailing edge < 100 prefer < Baseline drop else tangent >  
 Peak separation: 5

Method : Z:\svoasrv\HPCHEM1\BNA\_M\Methods\SFAM-EPA-BM080224.MA.M  
 Title : SVOA CALIBRATION

Signal : TIC: BM047032.D\data.ms

peak #	R.T. min	first scan	max scan	last scan	PK TY	peak height	corr. area	corr. % max.	% of total
1	3.022	19	23	28	rVB	40267	45914	0.95%	0.084%
2	3.287	65	68	75	rBV	26644	41085	0.85%	0.076%
3	3.422	87	91	99	rBV2	51430	84993	1.75%	0.156%
4	3.510	102	106	115	rVV	122969	153005	3.16%	0.281%
5	3.710	137	140	144	rVB	19349	21789	0.45%	0.040%
6	4.240	225	230	235	rBV2	24360	30894	0.64%	0.057%
7	4.587	284	289	298	rVB	29826	48097	0.99%	0.088%
8	4.687	302	306	314	rBV2	23730	40113	0.83%	0.074%
9	6.598	626	631	643	rVV	718634	1154633	23.81%	2.124%
10	6.751	651	657	670	rBV	557372	851990	17.57%	1.567%
11	6.939	680	689	702	rVB	752677	1138661	23.48%	2.094%
12	7.039	702	706	710	rBV4	19008	29653	0.61%	0.055%
13	7.398	760	767	775	rBV	1099414	1684615	34.74%	3.099%
14	7.481	775	781	789	rVB10	10422	25979	0.54%	0.048%
15	8.116	882	889	900	rBV	738512	1160768	23.94%	2.135%
16	8.216	900	906	915	rVV	73593	133983	2.76%	0.246%
17	8.539	954	961	971	rBV	682661	1076186	22.19%	1.980%
18	9.128	1056	1061	1068	rVB2	37470	63400	1.31%	0.117%
19	9.251	1075	1082	1089	rBV	570859	907326	18.71%	1.669%
20	9.433	1107	1113	1119	rBV5	17030	39221	0.81%	0.072%
21	9.528	1124	1129	1135	rVB6	12596	21828	0.45%	0.040%
22	9.610	1140	1143	1149	rVB7	12955	20262	0.42%	0.037%
23	9.786	1164	1173	1184	rBV	852347	1425930	29.41%	2.623%
24	10.151	1227	1235	1242	rVV	1354668	2255961	46.53%	4.150%
25	10.304	1253	1261	1275	rBV	365661	718744	14.82%	1.322%
26	10.727	1329	1333	1340	rVB9	16087	29133	0.60%	0.054%
27	10.910	1359	1364	1373	rVV	89334	165456	3.41%	0.304%
28	10.986	1373	1377	1386	rVB	15490	36946	0.76%	0.068%
29	11.204	1408	1414	1422	rBV	30772	60113	1.24%	0.111%
30	11.610	1478	1483	1491	rVV2	48777	78686	1.62%	0.145%
31	11.751	1502	1507	1511	rVV3	22599	37129	0.77%	0.068%
32	11.827	1515	1520	1527	rVB5	20688	44947	0.93%	0.083%
33	12.051	1552	1558	1563	rBV6	11679	22521	0.46%	0.041%
34	12.380	1611	1614	1621	rVB9	10921	20306	0.42%	0.037%
35	12.451	1621	1626	1632	rBV6	16427	29143	0.60%	0.054%
36	12.598	1646	1651	1655	rVV	32612	46300	0.95%	0.085%

Data Path : Z:\svoasrv\HPCHEM1\BNA\_M\Data\BM080624\  
 Data File : BM047032.D  
 Acq On : 06 Aug 2024 21:16  
 Operator : RC/JU  
 Sample : P3328-11  
 Misc :  
 ALS Vial : 7 Sample Multiplier: 1

Instrument :  
 BNA\_M  
 ClientSampleId :  
 E20L4

Integration Parameters: LSCINT.P

Integrator: RTE  
 Smoothing : OFF Filtering: 5  
 Sampling : 1 Min Area: 0.1 % of largest Peak  
 Start Thrs: 0.2 Max Peaks: 100  
 Stop Thrs : 0 Peak Location: TOP

If leading or trailing edge < 100 prefer < Baseline drop else tangent >  
 Peak separation: 5

Method : Z:\svoasrv\HPCHEM1\BNA\_M\Methods\SFAM-EPA-BM080224.MA.M  
 Title : SVOA CALIBRATION

37	12.892	1697	1701	1707	rVV	68195	98869	2.04%	0.182%
38	13.210	1749	1755	1757	rBV4	19796	35810	0.74%	0.066%
39	13.368	1777	1782	1786	rVV	30291	47922	0.99%	0.088%
40	13.421	1786	1791	1794	rVV5	22668	40520	0.84%	0.075%
41	13.480	1795	1801	1808	rVV	1351308	1923347	39.67%	3.538%
42	13.563	1810	1815	1819	rVV3	48340	81580	1.68%	0.150%
43	13.604	1819	1822	1828	rVV5	26470	40300	0.83%	0.074%
44	13.739	1838	1845	1857	rVB	1529760	2297407	47.38%	4.226%
45	13.986	1883	1887	1891	rBV	72096	90781	1.87%	0.167%
46	14.051	1891	1898	1905	rVV	1976571	2859219	58.97%	5.259%
47	14.110	1905	1908	1917	rVB3	21547	42949	0.89%	0.079%
48	14.292	1931	1939	1948	rBV	659614	1070268	22.07%	1.969%
49	14.439	1959	1964	1971	rBV4	45092	127048	2.62%	0.234%
50	14.498	1972	1974	1976	rVV2	18997	21809	0.45%	0.040%
51	14.539	1979	1981	1986	rVB3	29145	36994	0.76%	0.068%
52	14.610	1988	1993	1999	rVB5	28600	43688	0.90%	0.080%
53	14.686	2001	2006	2010	rBV2	25770	41834	0.86%	0.077%
54	14.739	2010	2015	2020	rVB3	28549	42048	0.87%	0.077%
55	14.851	2030	2034	2038	rVV6	18046	29789	0.61%	0.055%
56	14.886	2038	2040	2046	rVV6	17826	27288	0.56%	0.050%
57	14.945	2046	2050	2058	rVB	60626	87103	1.80%	0.160%
58	15.057	2063	2069	2075	rBV	1989974	2873004	59.25%	5.285%
59	15.110	2075	2078	2083	rVB2	36680	51498	1.06%	0.095%
60	15.192	2085	2092	2097	rBV	507206	673144	13.88%	1.238%
61	15.357	2114	2120	2124	rVB4	35212	67588	1.39%	0.124%
62	15.404	2124	2128	2141	rVB7	23614	77610	1.60%	0.143%
63	15.510	2141	2146	2150	rBV8	16718	33590	0.69%	0.062%
64	15.562	2150	2155	2163	rVB8	26032	61219	1.26%	0.113%
65	15.645	2164	2169	2177	rVB8	17853	34997	0.72%	0.064%
66	15.815	2193	2198	2200	rBV2	72119	99697	2.06%	0.183%
67	16.168	2254	2258	2263	rBV6	24139	43837	0.90%	0.081%
68	16.257	2270	2273	2280	rVB7	23664	50951	1.05%	0.094%
69	16.327	2281	2285	2287	rBV5	15062	22376	0.46%	0.041%
70	16.468	2306	2309	2316	rVV2	38418	55930	1.15%	0.103%
71	16.557	2320	2324	2328	rVV6	22545	39950	0.82%	0.073%
72	16.609	2329	2333	2339	rVV3	75252	163585	3.37%	0.301%
73	16.662	2339	2342	2352	rVB2	47118	84427	1.74%	0.155%
74	16.809	2361	2367	2371	rBV	2480788	3379457	69.70%	6.216%
75	16.851	2371	2374	2379	rVB	686489	885796	18.27%	1.629%
76	16.909	2379	2384	2388	rBV	2314820	3178281	65.55%	5.846%

Data Path : Z:\svoasrv\HPCHEM1\BNA\_M\Data\BM080624\  
 Data File : BM047032.D  
 Acq On : 06 Aug 2024 21:16  
 Operator : RC/JU  
 Sample : P3328-11  
 Misc :  
 ALS Vial : 7 Sample Multiplier: 1

Instrument :  
 BNA\_M  
 ClientSampleId :  
 E20L4

Integration Parameters: LSCINT.P

Integrator: RTE  
 Smoothing : OFF Filtering: 5  
 Sampling : 1 Min Area: 0.1 % of largest Peak  
 Start Thrs: 0.2 Max Peaks: 100  
 Stop Thrs : 0 Peak Location: TOP

If leading or trailing edge < 100 prefer < Baseline drop else tangent >  
 Peak separation: 5

Method : Z:\svoasrv\HPCHEM1\BNA\_M\Methods\SFAM-EPA-BM080224.MA.M  
 Title : SVOA CALIBRATION

77	17.351	2455	2459	2462	rVB2	57552	72628	1.50%	0.134%
78	17.392	2462	2466	2471	rBV4	26239	44185	0.91%	0.081%
79	17.521	2486	2488	2491	rBV3	22660	24634	0.51%	0.045%
80	17.686	2512	2516	2521	rBV	86621	137039	2.83%	0.252%
81	17.745	2521	2526	2532	rVV2	302175	454716	9.38%	0.836%
82	17.815	2535	2538	2542	rVB3	51756	68258	1.41%	0.126%
83	17.880	2544	2549	2553	rBV2	140595	228084	4.70%	0.420%
84	18.045	2573	2577	2581	rVB2	59016	68912	1.42%	0.127%
85	18.086	2582	2584	2589	rVB3	29195	35260	0.73%	0.065%
86	18.198	2599	2603	2606	rBV	80253	110856	2.29%	0.204%
87	18.621	2671	2675	2679	rBV2	80582	129086	2.66%	0.237%
88	18.774	2696	2701	2706	rBV5	53409	131686	2.72%	0.242%
89	18.886	2715	2720	2725	rVB	1339053	1707748	35.22%	3.141%
90	19.045	2744	2747	2754	rBV2	120803	175753	3.62%	0.323%
91	19.221	2772	2777	2780	rBV	2632316	3530944	72.82%	6.495%
92	19.250	2780	2782	2786	rVB	718494	764059	15.76%	1.405%
93	19.756	2865	2868	2872	rVB	228007	258616	5.33%	0.476%
94	19.856	2882	2885	2890	rVB	152471	198500	4.09%	0.365%
95	20.139	2931	2933	2937	rVB4	119650	135891	2.80%	0.250%
96	20.780	3040	3042	3047	rVB2	240718	289222	5.96%	0.532%
97	21.044	3080	3087	3091	rBV2	2968770	4848801	100.00%	8.919%
98	21.080	3091	3093	3098	rVB	454774	519340	10.71%	0.955%
99	23.568	3510	3516	3523	rBV	993389	2036582	42.00%	3.746%
100	23.756	3541	3548	3554	rBV	1735088	3685339	76.01%	6.779%

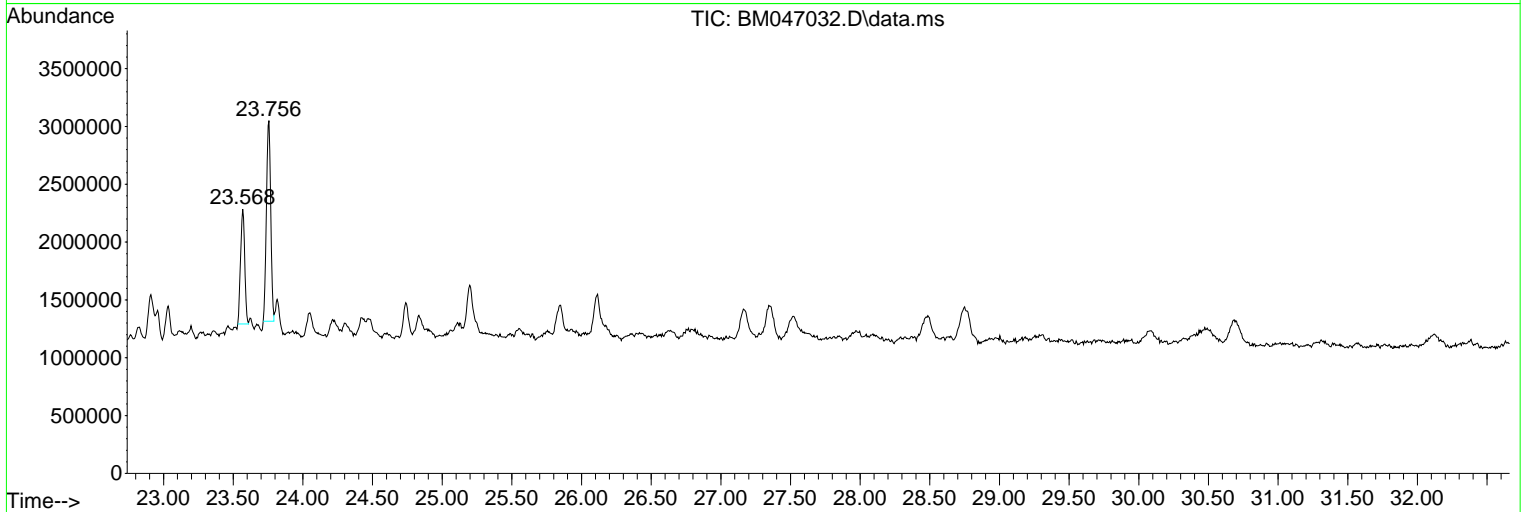
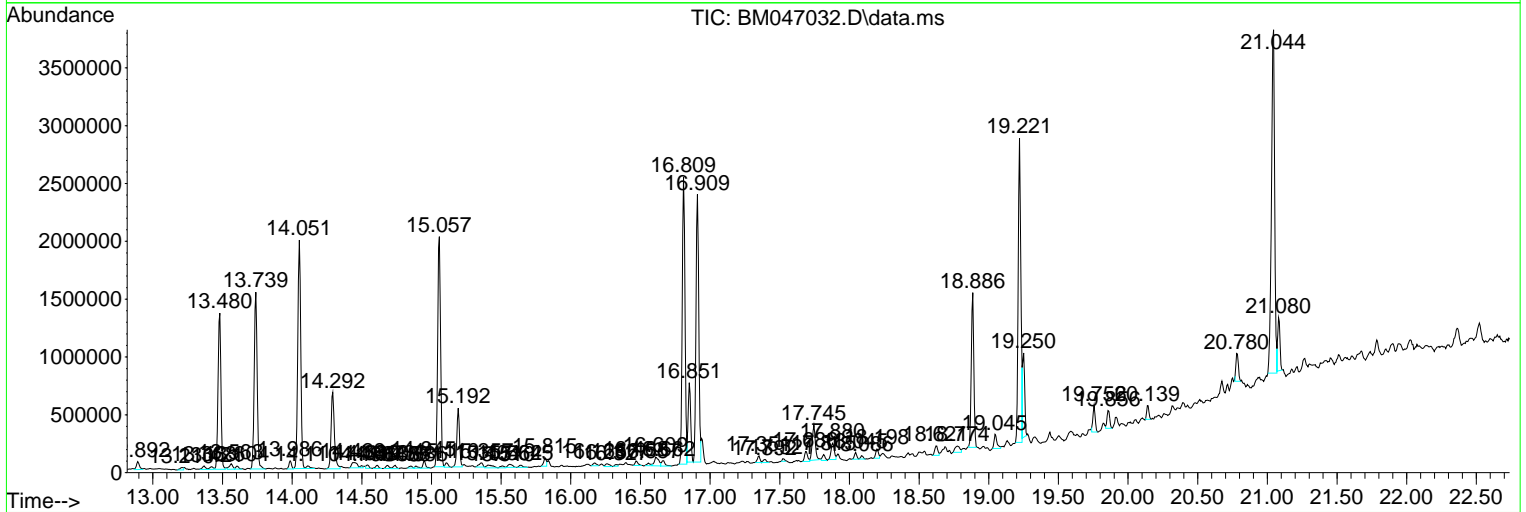
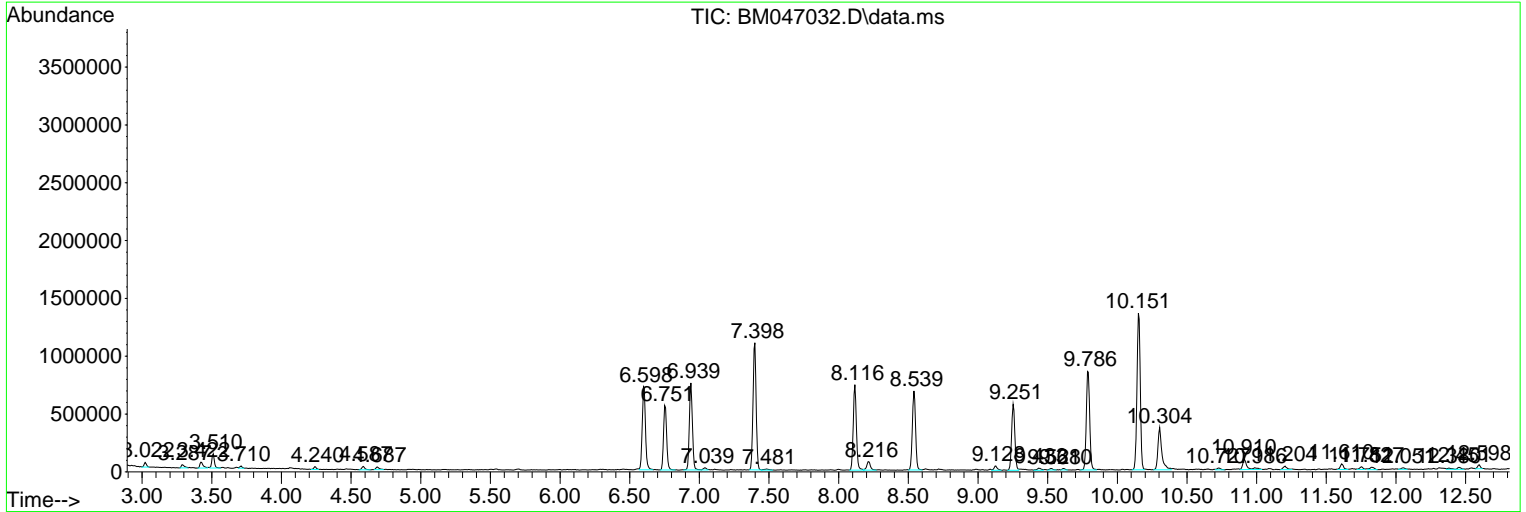
Sum of corrected areas: 54365359

Data Path : Z:\svoasrv\HPCHEM1\BNA\_M\Data\BM080624\  
 Data File : BM047032.D  
 Acq On : 06 Aug 2024 21:16  
 Operator : RC/JU  
 Sample : P3328-11  
 Misc :  
 ALS Vial : 7 Sample Multiplier: 1

Instrument :  
 BNA\_M  
 ClientSampleId :  
 E20L4

Quant Method : Z:\svoasrv\HPCHEM1\BNA\_M\Methods\SFAM-EPA-BM080224.MA.M  
 Quant Title : SVOA CALIBRATION

TIC Library : C:\Database\NIST20.L  
 TIC Integration Parameters: LSCINT.P



Data Path : Z:\svoasrv\HPCHEM1\BNA\_M\Data\BM080624\  
 Data File : BM047032.D  
 Acq On : 06 Aug 2024 21:16  
 Operator : RC/JU  
 Sample : P3328-11  
 Misc :  
 ALS Vial : 7 Sample Multiplier: 1

Instrument :  
 BNA\_M  
 ClientSampleId :  
 E20L4

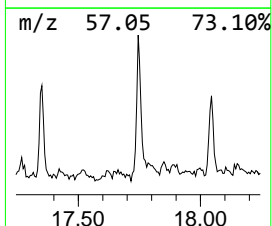
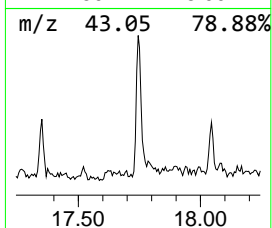
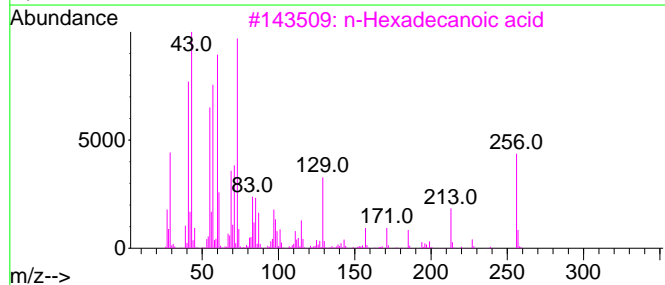
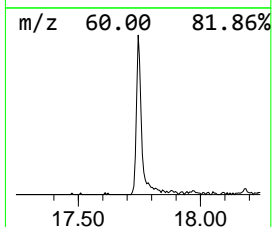
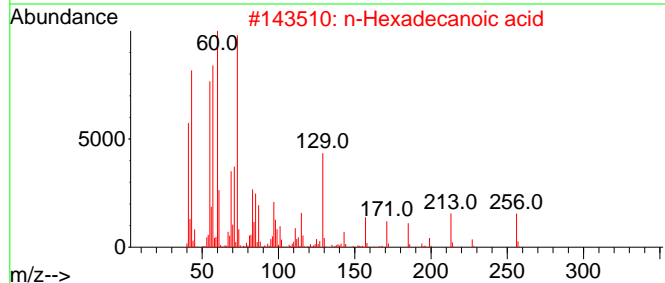
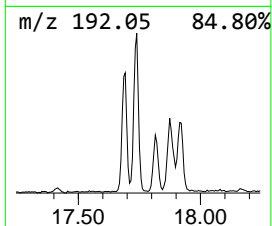
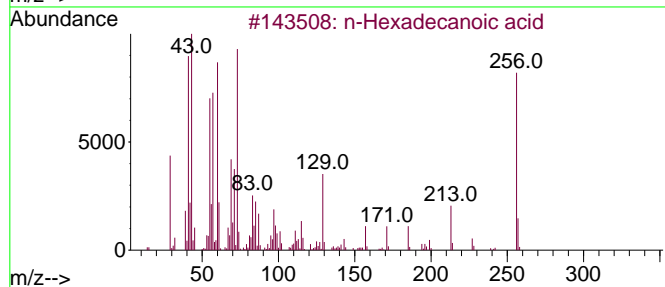
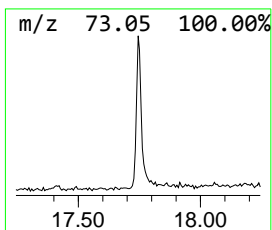
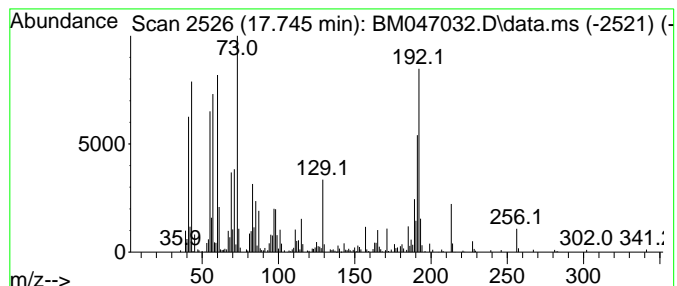
Quant Method : Z:\svoasrv\HPCHEM1\BNA\_M\Methods\SFAM-EPA-BM080224.MA.M  
 Quant Title : SVOA CALIBRATION

TIC Library : C:\Database\NIST20.L  
 TIC Integration Parameters: LSCINT.P

\*\*\*\*\*  
 Peak Number 1 n-Hexadecanoic acid Concentration Rank 1

R.T.	EstConc	Area	Relative to ISTD	R.T.
17.745	2.69 ng/ul	454716	Phenanthrene-d10	16.809

Hit#	of 5	Tentative ID	MW	MolForm	CAS#	Qual
1		n-Hexadecanoic acid	256	C16H32O2	000057-10-3	97
2		n-Hexadecanoic acid	256	C16H32O2	000057-10-3	97
3		n-Hexadecanoic acid	256	C16H32O2	000057-10-3	95
4		n-Hexadecanoic acid	256	C16H32O2	000057-10-3	95
5		n-Hexadecanoic acid	256	C16H32O2	000057-10-3	90



Data Path : Z:\svoasrv\HPCHEM1\BNA\_M\Data\BM080624\  
Data File : BM047032.D  
Acq On : 06 Aug 2024 21:16  
Operator : RC/JU  
Sample : P3328-11  
Misc :  
ALS Vial : 7 Sample Multiplier: 1

Instrument :  
BNA\_M  
ClientSampleId :  
E20L4

Quant Method : Z:\svoasrv\HPCHEM1\BNA\_M\Methods\SFAM-EPA-BM080224.MA.M  
Quant Title : SVOA CALIBRATION

TIC Library : C:\Database\NIST20.L  
TIC Integration Parameters: LSCINT.P

TIC Top Hit name	RT	EstConc	Units	Response	--Internal Standard--			
					#	RT	Resp	Conc
n-Hexadecanoic ...	17.745	2.7	ng/ul	454716	4	16.809	3379460	20.0