

Data Path : Z:\svoasrv\HPCHEM1\BNA_M\Data\BM080624\
 Data File : BM047042.D
 Acq On : 07 Aug 2024 04:42
 Operator : RC/JU
 Sample : PB162282BL
 Misc :
 ALS Vial : 18 Sample Multiplier: 1

Instrument :
 BNA_M
 ClientSampleId :
 SBLK282

Integration Parameters: LSCINT.P

Integrator: RTE
 Smoothing : OFF Filtering: 5
 Sampling : 1 Min Area: 0.1 % of largest Peak
 Start Thrs: 0.2 Max Peaks: 100
 Stop Thrs : 0 Peak Location: TOP

If leading or trailing edge < 100 prefer < Baseline drop else tangent >
 Peak separation: 5

Method : Z:\svoasrv\HPCHEM1\BNA_M\Methods\SFAM-EPA-BM080224.MA.M
 Title : SVOA CALIBRATION

Signal : TIC: BM047042.D\data.ms

peak #	R.T. min	first scan	max scan	last scan	PK TY	peak height	corr. area	corr. % max.	% of total
1	3.022	19	23	28	rVB	78300	91457	1.53%	0.142%
2	3.410	85	89	104	rBV	968708	1399174	23.41%	2.168%
3	3.710	136	140	146	rVB	18565	22777	0.38%	0.035%
4	6.604	625	632	642	rVV	1207855	1907435	31.92%	2.956%
5	6.751	652	657	669	rVB	979309	1503851	25.16%	2.331%
6	6.940	682	689	698	rBV	1237361	1911761	31.99%	2.963%
7	7.398	759	767	776	rBV	864378	1332852	22.30%	2.066%
8	8.116	882	889	904	rBV	1474502	2329769	38.98%	3.611%
9	8.539	953	961	974	rBV	1194744	1895825	31.72%	2.938%
10	9.251	1074	1082	1095	rBV	991073	1641823	27.47%	2.544%
11	9.792	1166	1174	1184	rBV	1458755	2467745	41.29%	3.824%
12	10.151	1228	1235	1243	rBV	1127156	1843484	30.85%	2.857%
13	10.304	1253	1261	1273	rBV	1451140	2420960	40.51%	3.752%
14	10.992	1375	1378	1382	rBV6	4729	8062	0.13%	0.012%
15	11.751	1503	1507	1515	rBV3	24470	42611	0.71%	0.066%
16	13.016	1716	1722	1726	rVB5	4816	7078	0.12%	0.011%
17	13.480	1793	1801	1810	rBV	2501236	3355646	56.15%	5.200%
18	13.739	1837	1845	1855	rBV	2825710	4167795	69.74%	6.459%
19	14.051	1891	1898	1905	rBV	1737401	2441120	40.84%	3.783%
20	14.292	1932	1939	1954	rBV	1247620	1829112	30.60%	2.835%
21	15.057	2061	2069	2077	rBV	3609950	4994653	83.57%	7.740%
22	15.198	2085	2093	2101	rBV	1046786	1489300	24.92%	2.308%
23	15.298	2106	2110	2118	rVB4	16328	31365	0.52%	0.049%
24	15.845	2199	2203	2207	rVB4	11322	15449	0.26%	0.024%
25	16.492	2308	2313	2316	rVB7	7366	11002	0.18%	0.017%
26	16.604	2328	2332	2335	rBV5	7798	10385	0.17%	0.016%
27	16.810	2361	2367	2376	rBV	2105160	2835636	47.45%	4.395%
28	16.909	2376	2384	2395	rBV	3908802	5350953	89.53%	8.293%
29	17.086	2411	2414	2418	rBV6	10046	14562	0.24%	0.023%
30	18.780	2698	2702	2708	rVB2	52578	73146	1.22%	0.113%
31	18.856	2711	2715	2718	rVV	43722	54542	0.91%	0.085%
32	19.221	2771	2777	2786	rBV	4466123	5976597	100.00%	9.262%
33	21.045	3082	3087	3093	rBV	2143143	2826493	47.29%	4.380%
34	23.574	3509	3517	3529	rVB2	2539023	5611650	93.89%	8.697%
35	23.756	3541	3548	3556	rBV	1191331	2610274	43.67%	4.045%

Data Path : Z:\svoasrv\HPCHEM1\BNA_M\Data\BM080624\
Data File : BM047042.D
Acq On : 07 Aug 2024 04:42
Operator : RC/JU
Sample : PB162282BL
Misc :
ALS Vial : 18 Sample Multiplier: 1

Instrument :
BNA_M
ClientSampleId :
SBLK282

Integration Parameters: LSCINT.P
Integrator: RTE
Smoothing : OFF Filtering: 5
Sampling : 1 Min Area: 0.1 % of largest Peak
Start Thrs: 0.2 Max Peaks: 100
Stop Thrs : 0 Peak Location: TOP

If leading or trailing edge < 100 prefer < Baseline drop else tangent >
Peak separation: 5

Method : Z:\svoasrv\HPCHEM1\BNA_M\Methods\SFAM-EPA-BM080224.MA.M
Title : SVOA CALIBRATION

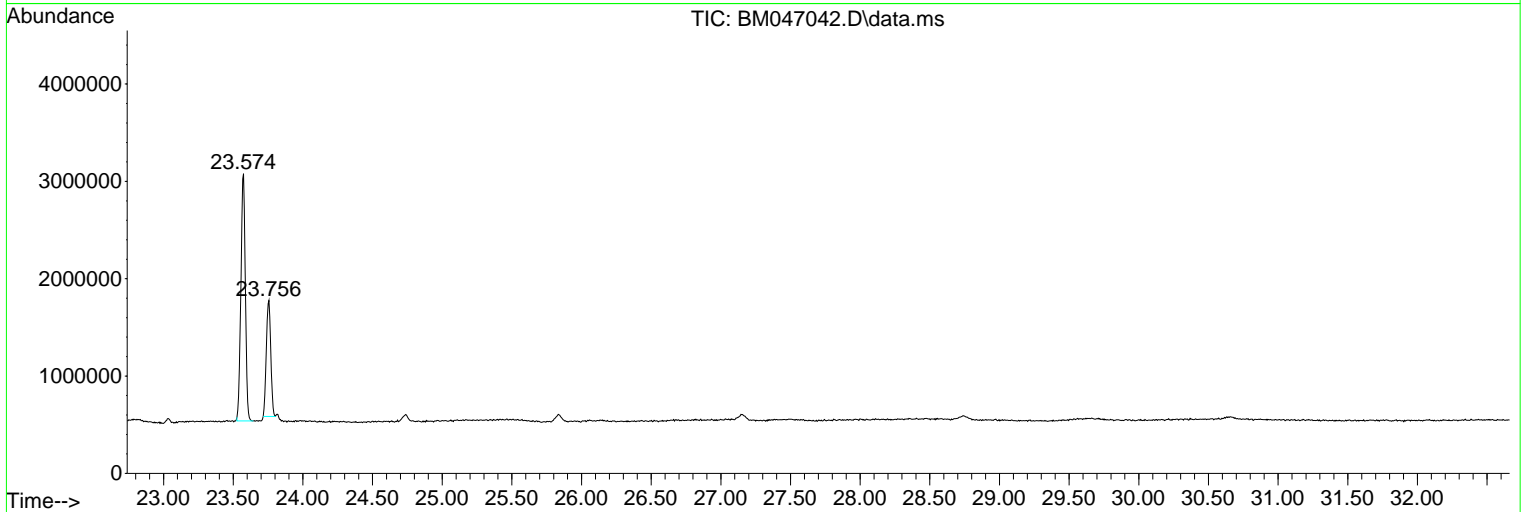
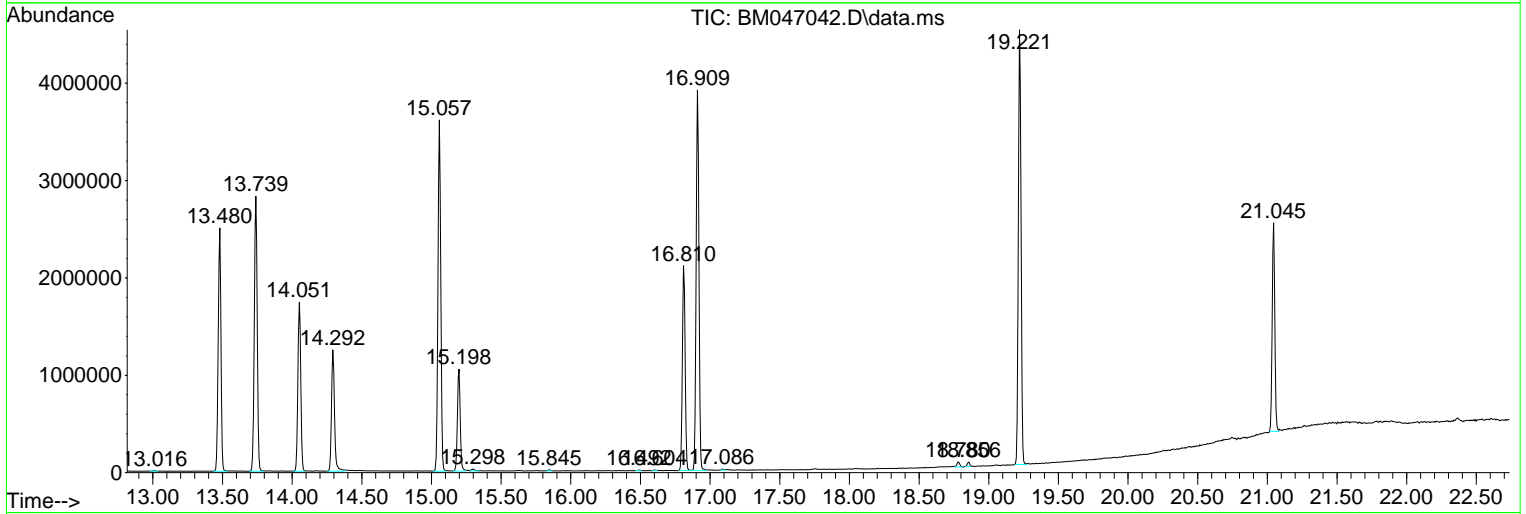
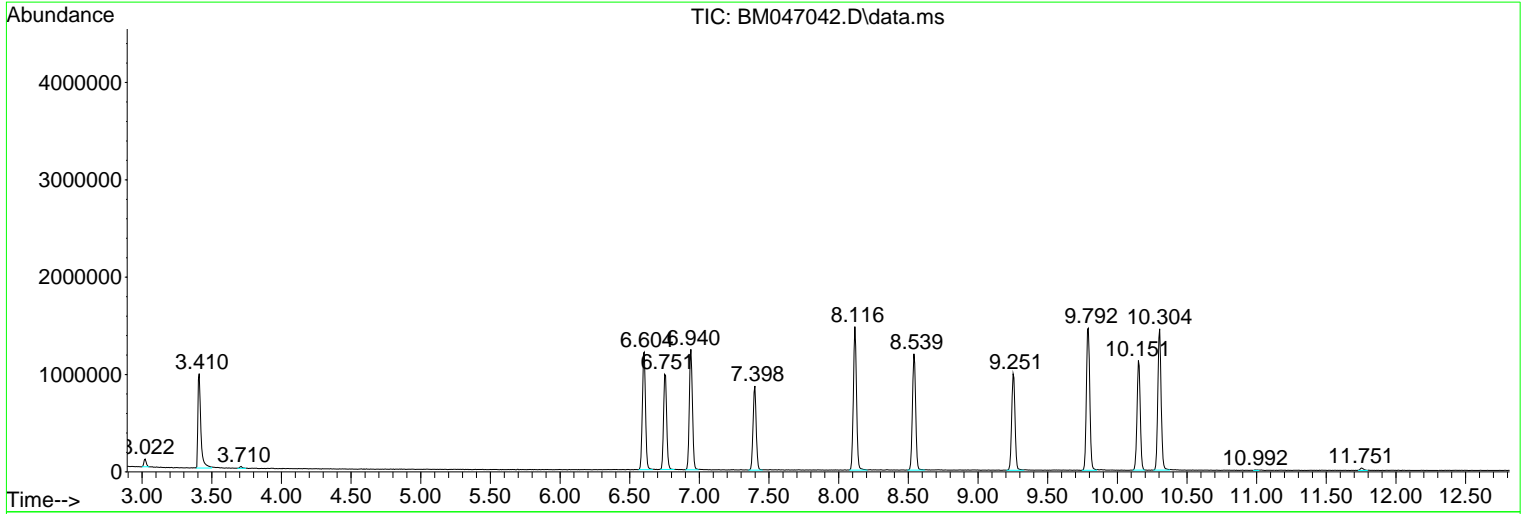
Sum of corrected areas: 64526344

Data Path : Z:\svoasrv\HPCHEM1\BNA_M\Data\BM080624\
 Data File : BM047042.D
 Acq On : 07 Aug 2024 04:42
 Operator : RC/JU
 Sample : PB162282BL
 Misc :
 ALS Vial : 18 Sample Multiplier: 1

Instrument :
 BNA_M
ClientSampleId :
 SBLK282

Quant Method : Z:\svoasrv\HPCHEM1\BNA_M\Methods\SFAM-EPA-BM080224.MA.M
 Quant Title : SVOA CALIBRATION

TIC Library : C:\Database\NIST20.L
 TIC Integration Parameters: LSCINT.P



Library Search Compound Report

Data Path : Z:\svoasrv\HPCHEM1\BNA_M\Data\BM080624\
Data File : BM047042.D
Acq On : 07 Aug 2024 04:42
Operator : RC/JU
Sample : PB162282BL
Misc :
ALS Vial : 18 Sample Multiplier: 1

Instrument :
BNA_M
ClientSampleId :
SBLK282

Quant Method : Z:\svoasrv\HPCHEM1\BNA_M\Methods\SFAM-EPA-BM080224.MA.M
Quant Title : SVOA CALIBRATION

TIC Library : C:\Database\NIST20.L
TIC Integration Parameters: LSCINT.P

No Library Search Compounds Detected

Data Path : Z:\svoasrv\HPCHEM1\BNA_M\Data\BM080624\
Data File : BM047042.D
Acq On : 07 Aug 2024 04:42
Operator : RC/JU
Sample : PB162282BL
Misc :
ALS Vial : 18 Sample Multiplier: 1

Instrument :
BNA_M
ClientSampleId :
SBLK282

Quant Method : Z:\svoasrv\HPCHEM1\BNA_M\Methods\SFAM-EPA-BM080224.MA.M
Quant Title : SVOA CALIBRATION

TIC Library : C:\Database\NIST0.L
TIC Integration Parameters: LSCINT.P

TIC Top Hit name	RT	EstConc	Units	Response	#	RT	Resp	Conc
------------------	----	---------	-------	----------	---	----	------	------
