

Data Path : Z:\SVOASRV\HPCHEM1\BNA M\DATA\BM080720\
 Data File : BM027011.D
 Acq On : 06 Aug 2020 19:36
 Operator : JU/CG
 Sample : SSTD01001
 Misc :
 ALS Vial : 3 Sample Multiplier: 1

Instrument :
 BNA_M
 ClientSampleId :
 SSTD01001

Quant Time: Aug 07 03:11:16 2020
 Quant Method : Z:\SVOASRV\HPCHEM1\BNA_M\METHODS\SOM-EPA-BM080720MA.M
 Quant Title : SVOA CALIBRATION
 QLast Update : Fri Aug 07 03:07:39 2020
 Response via : Initial Calibration

Internal Standards	R.T.	QIon	Response	Conc	Units	Dev(Min)
1) 1,4-Dichlorobenzene-d4	7.65	152	81889	20.00	ng/ul	0.00
18) Naphthalene-d8	10.42	136	277548	20.00	ng/ul	0.00
36) Acenaphthene-d10	14.28	164	194024	20.00	ng/ul	0.00
62) Phenanthrene-d10	17.02	188	435184	20.00	ng/ul	0.00
78) Chrysene-d12	21.22	240	480840	20.00	ng/ul	0.00
86) Perylene-d12	23.41	264	504397	20.00	ng/ul	0.00

System Monitoring Compounds

3) 1,4-Dioxane-d8	3.20	96	7321	4.30	ng/uL	0.00
5) Phenol-d5	6.82	99	60260	9.55	ng/ul	0.00
7) Bis-(2-Chloroethyl)ether-d	6.98	67	43342	10.34	ng/ul	0.00
9) 2-Chlorophenol-d4	7.18	132	48283	9.96	ng/ul	0.00
13) 4-Methylphenol-d8	8.35	113	45593	9.29	ng/ul	0.00
19) Nitrobenzene-d5	8.78	128	22104	10.17	ng/ul	0.00
22) 2-Nitrophenol-d4	9.50	143	21420	9.32	ng/ul	0.00
26) 2,4-Dichlorophenol-d3	10.04	165	46584	9.12	ng/ul	0.00
29) 4-Chloroaniline-d4	10.55	131	53390	9.76	ng/ul	0.00
44) Dimethylphthalate-d6	13.69	166	154210	9.94	ng/ul	0.00
47) Acenaphthylene-d8	13.97	160	181986	9.92	ng/ul	0.00
52) 4-Nitrophenol-d4	14.47	143	22226	8.44	ng/ul	0.00
58) Fluorene-d10	15.27	176	135030	9.60	ng/ul	0.00
63) 4,6-Dinitro-2-methylphenol	15.39	200	19155	7.59	ng/ul	0.00
71) Anthracene-d10	17.12	188	213218	9.82	ng/ul	0.00
79) Pyrene-d10	19.42	212	233834	9.93	ng/ul	0.00
90) Benzo(a)pyrene-d12	23.27	264	266462	9.42	ng/ul	0.00

Target Compounds

Target Compounds	R.T.	QIon	Response	Conc	Units	Ovalue
2) 1,4-Dioxane	3.23	88	9374	4.207	ng/uL	99
4) Benzaldehyde	6.79	77	50960	10.055	ng/ul	97
6) Phenol	6.85	94	65483	9.841	ng/ul	100
8) Bis(2-Chloroethyl)ether	7.07	93	53928	10.045	ng/ul	96
10) 2-Chlorophenol	7.21	128	51344	10.095	ng/ul	99
11) 2-Methylphenol	8.09	108	44871	9.279	ng/ul	92
12) 2,2'-oxybis(1-Chloropropan	8.17	45	41180	10.718	ng/ul	94
14) Acetophenone	8.46	105	82659	10.006	ng/ul	100
15) N-Nitroso-di-n-propylamine	8.45	70	47446	10.226	ng/ul#	95
16) 4-Methylphenol	8.41	108	49638	9.579	ng/ul	98
17) Hexachloroethane	8.72	117	25874	10.143	ng/ul	98
20) Nitrobenzene	8.83	77	74488	10.641	ng/ul	96
21) Isophorone	9.36	82	117778	10.550	ng/ul	97
23) 2-Nitrophenol	9.53	139	25223	9.793	ng/ul	89
24) 2,4-Dimethylphenol	9.60	107	60024	10.345	ng/ul	98
25) Bis(2-Chloroethoxy)methane	9.84	93	61425	9.409	ng/ul	98
27) 2,4-Dichlorophenol	10.07	162	48490	9.695	ng/ul	99
28) Naphthalene	10.46	128	158310	10.410	ng/ul	97
30) 4-Chloroaniline	10.57	127	53984	9.757	ng/ul	100
31) Hexachlorobutadiene	10.77	225	43726	9.912	ng/ul	98
32) Caprolactam	11.33	113	12296	9.209	ng/ul	96
33) 4-Chloro-3-methylphenol	11.70	107	49969	9.891	ng/ul	99
34) 2-Methylnaphthalene	12.09	142	116280	10.269	ng/ul	99

Data Path : Z:\SVOASRV\HPCHEM1\BNA M\DATA\BM080720\
 Data File : BM027011.D
 Acq On : 06 Aug 2020 19:36
 Operator : JU/CG
 Sample : SSTD01001
 Misc :
 ALS Vial : 3 Sample Multiplier: 1

Instrument :
 BNA_M
 ClientSampleId :
 SSTD01001

Quant Time: Aug 07 03:11:16 2020
 Quant Method : Z:\SVOASRV\HPCHEM1\BNA_M\METHODS\SOM-EPA-BM080720MA.M
 Quant Title : SVOA CALIBRATION
 QLast Update : Fri Aug 07 03:07:39 2020
 Response via : Initial Calibration

Internal Standards	R.T.	QIon	Response	Conc	Units	Dev(Min)
35) 1-Methylnaphthalene	12.30	142	112624	10.036	ng/ul	97
37) 1,2,4,5-Tetrachlorobenzene	12.46	216	70787	9.181	ng/ul	98
38) Hexachlorocyclopentadiene	12.45	237	43822	8.644	ng/ul	96
39) 2,4,6-Trichlorophenol	12.70	196	40426	9.437	ng/ul	95
40) 2,4,5-Trichlorophenol	12.77	196	41687	8.760	ng/ul	93
41) 1,1'-Biphenyl	13.11	154	159098	10.276	ng/ul	99
42) 2-Chloronaphthalene	13.14	162	127225	10.077	ng/ul	99
43) 2-Nitroaniline	13.34	65	34496	9.640	ng/ul	95
45) Dimethylphthalate	13.74	163	162892	10.042	ng/ul	100
46) 2,6-Dinitrotoluene	13.85	165	28305	9.106	ng/ul	95
48) Acenaphthylene	13.99	152	187380	10.122	ng/ul	100
49) 3-Nitroaniline	14.17	138	23365	8.764	ng/ul#	99
50) Acenaphthene	14.34	153	132630	10.100	ng/ul	99
51) 2,4-Dinitrophenol	14.39	184	12774	7.529	ng/ul#	80
53) 4-Nitrophenol	14.49	109	27076	9.749	ng/ul	92
54) Dibenzofuran	14.67	168	190197	9.914	ng/ul	97
55) 2,4-Dinitrotoluene	14.64	165	42615	9.271	ng/ul	98
56) 2,3,4,6-Tetrachlorophenol	14.91	232	38859	8.904	ng/ul	95
57) Diethylphthalate	15.12	149	165648	10.173	ng/ul	99
59) Fluorene	15.33	166	158448	9.615	ng/ul	98
60) 4-Chlorophenyl-phenylether	15.33	204	85077	9.155	ng/ul	97
61) 4-Nitroaniline	15.33	138	29131	8.916	ng/ul	92
64) 4,6-Dinitro-2-methylphenol	15.40	198	21317	7.697	ng/ul	96
65) N-Nitrosodiphenylamine	15.54	169	130750	9.759	ng/ul	100
66) 4-Bromophenyl-phenylether	16.22	248	54210	9.580	ng/ul	98
67) Hexachlorobenzene	16.34	284	64176	9.805	ng/ul	96
68) Atrazine	16.49	200	48917	9.089	ng/ul	99
69) Pentachlorophenol	16.67	266	30188	8.259	ng/ul	96
70) Phenanthrene	17.06	178	259750	10.072	ng/ul	100
72) Anthracene	17.15	178	265724	9.876	ng/ul	99
73) 1,2,3,4-Tetrachlorobenzene	13.07	216	67517	9.855	ng/uL	98
74) Pentachlorobenzene	14.60	250	71076	9.825	ng/uL	98
75) Carbazole	17.42	167	215598	9.410	ng/ul	99
76) Di-n-butylphthalate	18.00	149	263133	9.635	ng/ul	100
77) Fluoranthene	19.08	202	306176	9.260	ng/ul	98
80) Pyrene	19.44	202	321058	10.121	ng/ul	99
81) Butylbenzylphthalate	20.37	149	109401	9.576	ng/ul	95
82) 3,3'-Dichlorobenzidine	21.14	252	90177	8.381	ng/ul	98
83) Benzo(a)anthracene	21.20	228	316103	9.738	ng/ul	100
84) Bis(2-ethylhexyl)phthalate	21.16	149	171045	9.868	ng/ul	99
85) Chrysene	21.25	228	315362	9.943	ng/ul	99
87) Di-n-octyl phthalate	22.03	149	278816	8.189	ng/ul	100
88) Benzo(b)fluoranthene	22.76	252	332902	9.496	ng/ul	98
89) Benzo(k)fluoranthene	22.80	252	342544	9.878	ng/ul	99
91) Benzo(a)pyrene	23.32	252	303458	9.445	ng/ul	100
92) Indeno(1,2,3-cd)pyrene	25.61	276	397116	9.829	ng/ul	99
93) Dibenzo(a,h)anthracene	25.63	278	341590	9.990	ng/ul	98
94) Benzo(a,h,i)perylene	26.28	276	329015	9.866	ng/ul	99

Data Path : Z:\SVOASRV\HPCHEM1\BNA M\DATA\BM080720\
 Data File : BM027011.D
 Acq On : 06 Aug 2020 19:36
 Operator : JU/CG
 Sample : SSTD01001
 Misc :
 ALS Vial : 3 Sample Multiplier: 1

Instrument :
 BNA_M
ClientSampleId :
 SSTD01001

Quant Time: Aug 07 03:11:16 2020
 Quant Method : Z:\SVOASRV\HPCHEM1\BNA_M\METHODS\SOM-EPA-BM080720MA.M
 Quant Title : SVOA CALIBRATION
 QLast Update : Fri Aug 07 03:07:39 2020
 Response via : Initial Calibration

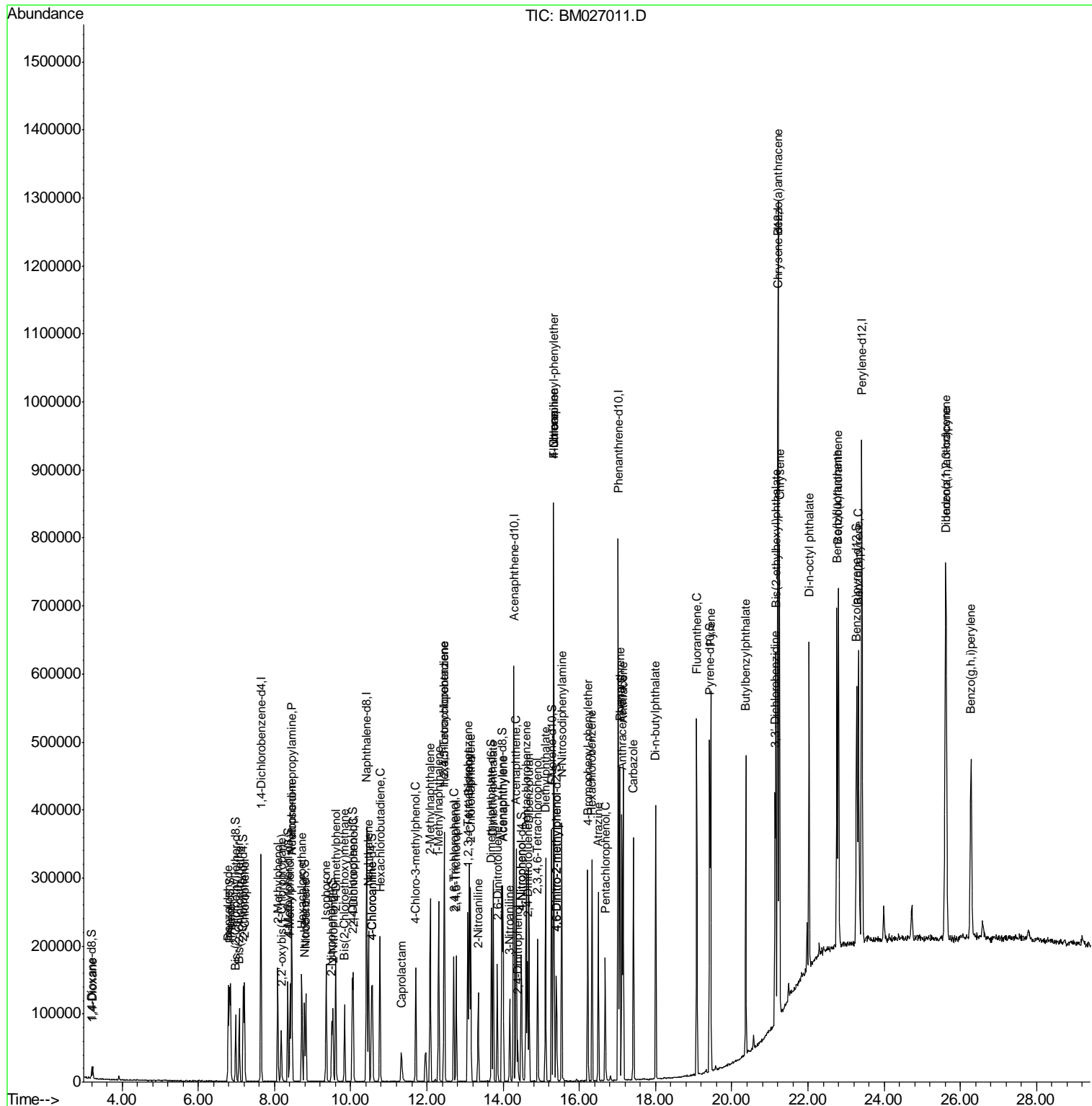
Internal Standards	R.T.	QIon	Response	Conc	Units	Dev(Min)

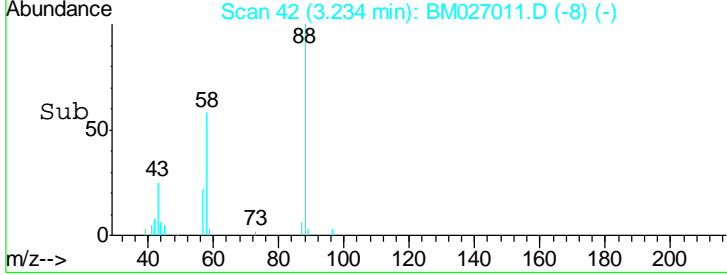
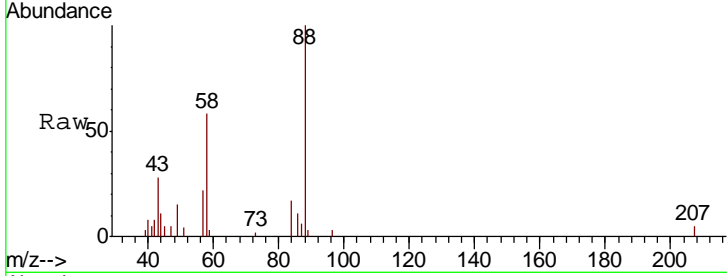
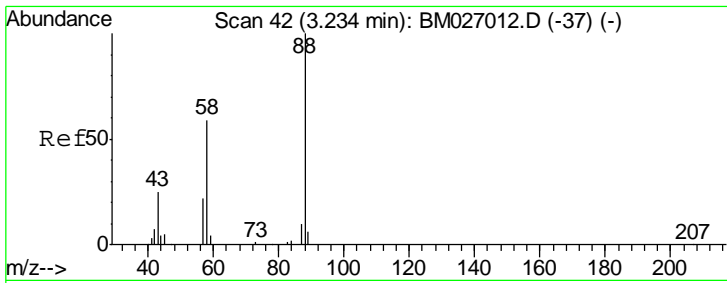
(#) = qualifier out of range (m) = manual integration (+) = signals summed						

Data Path : Z:\SVOASRV\HPCHEM1\BNA M\DATA\BM080720\
 Data File : BM027011.D
 Acq On : 06 Aug 2020 19:36
 Operator : JU/CG
 Sample : SSTD01001
 Misc :
 ALS Vial : 3 Sample Multiplier: 1

Instrument :
 BNA_M
 Client Sampled :
 SSTD01001

Quant Time: Aug 07 03:11:16 2020
 Quant Method : Z:\SVOASRV\HPCHEM1\BNA_M\METHODS\SOM-EPA-BM080720MA.M
 Quant Title : SVOA CALIBRATION
 QLast Update : Fri Aug 07 03:07:39 2020
 Response via : Initial Calibration

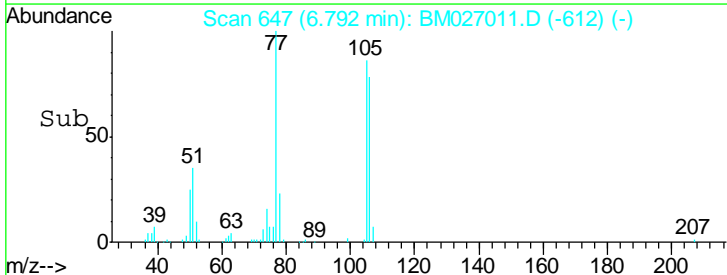
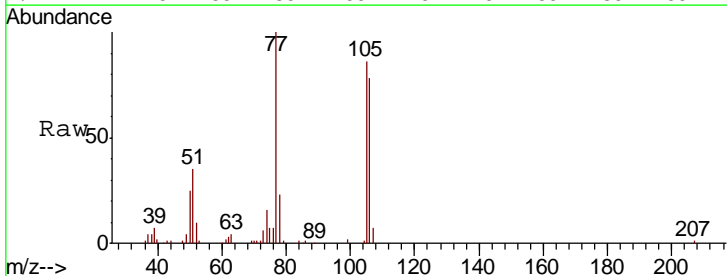
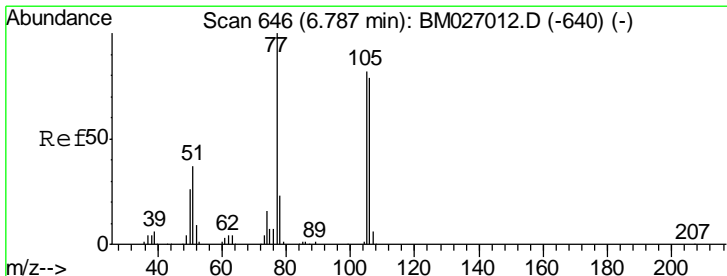
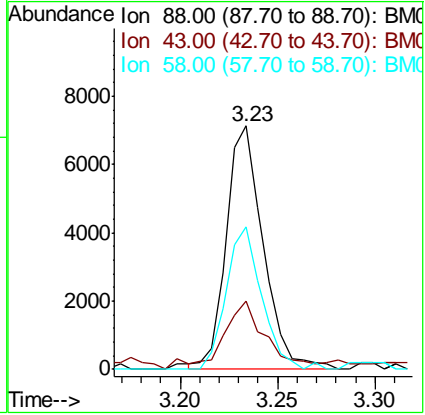




#2
 1,4-Dioxane
 Concen: 4.207 ng/uL
 RT: 3.23 min Scan# 42
 Delta R.T. 0.00 min
 Lab File: BM027011.D
 Acq: 06 Aug 2020 19:36

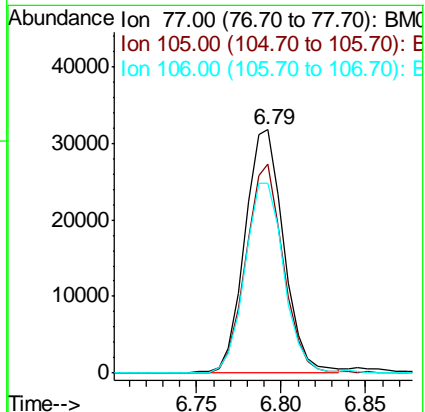
Instrument :
 BNA_M
ClientSampled :
 SSTD01001

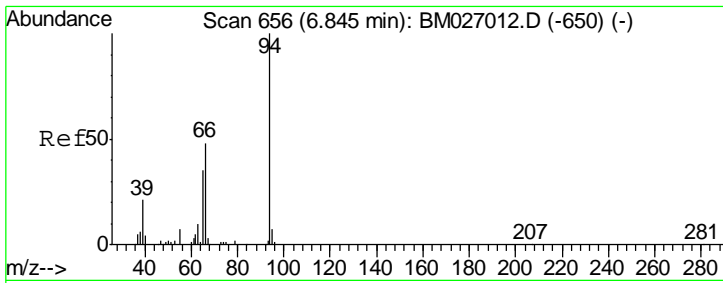
Tgt Ion	Resp	Lower	Upper
88	9374		
43	27.8	21.4	32.0
58	58.4	46.9	70.3



#4
 Benzaldehyde
 Concen: 10.055 ng/uL
 RT: 6.79 min Scan# 647
 Delta R.T. 0.01 min
 Lab File: BM027011.D
 Acq: 06 Aug 2020 19:36

Tgt Ion	Resp	Lower	Upper
77	50960		
105	85.6	65.9	98.9
106	77.9	63.3	94.9

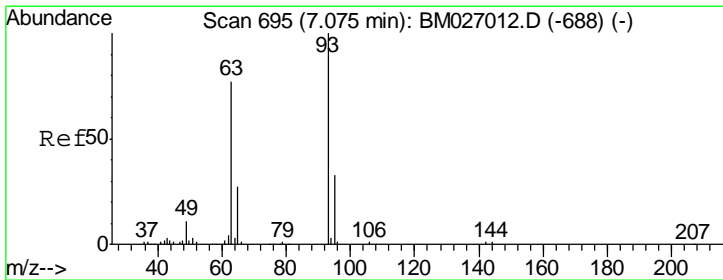
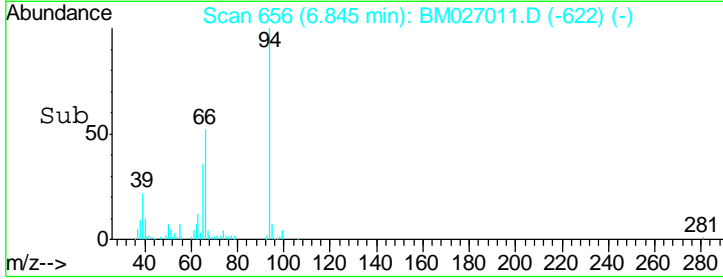
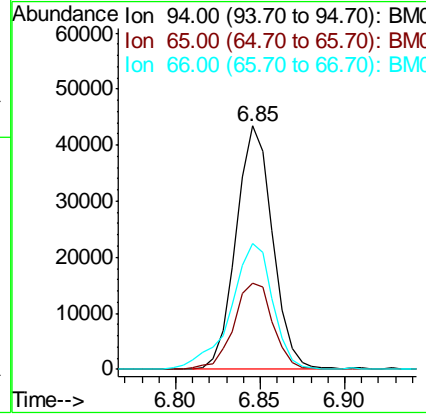
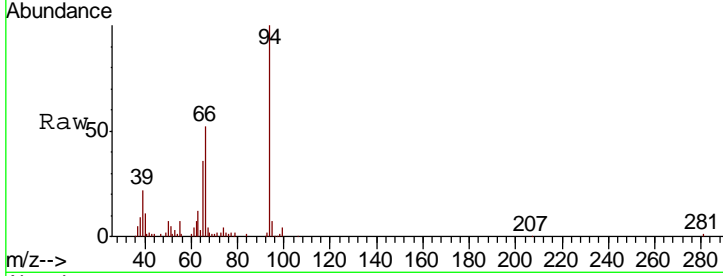




#6
 Phenol
 Concen: 9.841 ng/ul
 RT: 6.85 min Scan# 656
 Delta R.T. 0.00 min
 Lab File: BM027011.D
 Acq: 06 Aug 2020 19:36

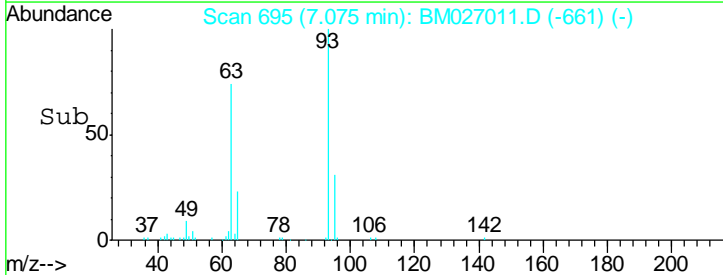
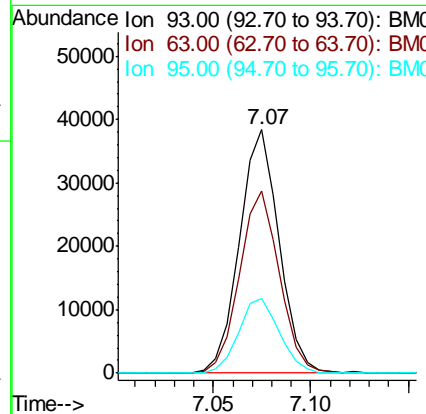
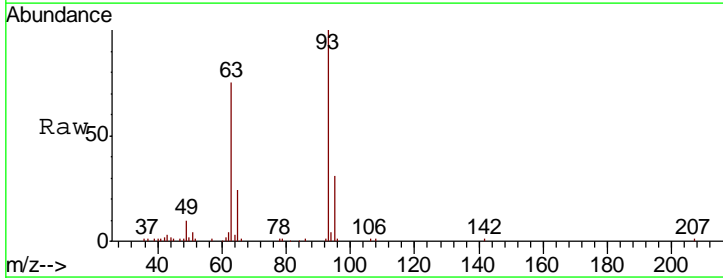
Instrument :
 BNA_M
ClientSampled :
 SST01001

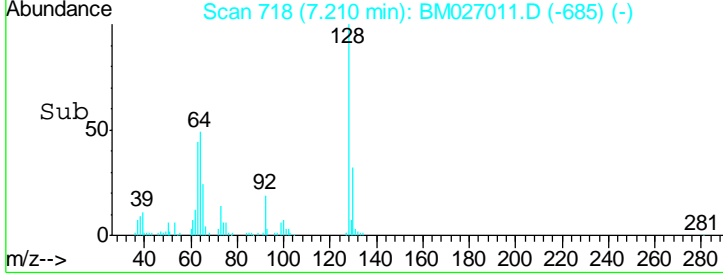
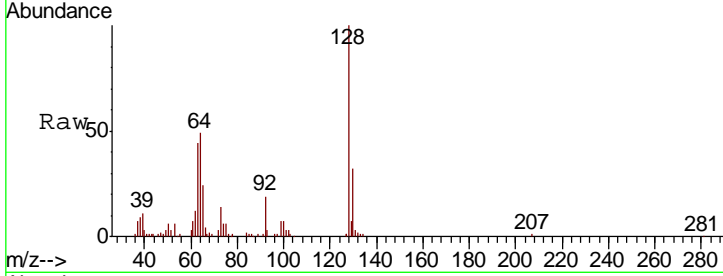
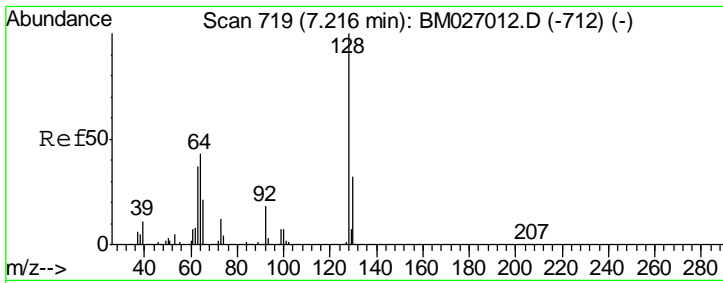
Tgt Ion	Resp	Lower	Upper
94	65483		
65	35.6	28.6	43.0
66	51.6	41.3	61.9



#8
 Bis(2-Chloroethyl)ether
 Concen: 10.045 ng/ul
 RT: 7.07 min Scan# 695
 Delta R.T. 0.00 min
 Lab File: BM027011.D
 Acq: 06 Aug 2020 19:36

Tgt Ion	Resp	Lower	Upper
93	53928		
63	74.6	61.9	92.9
95	30.8	26.6	40.0

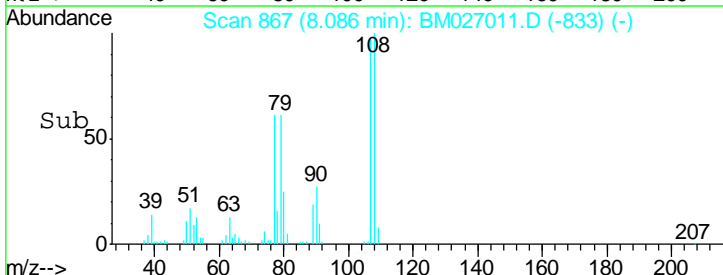
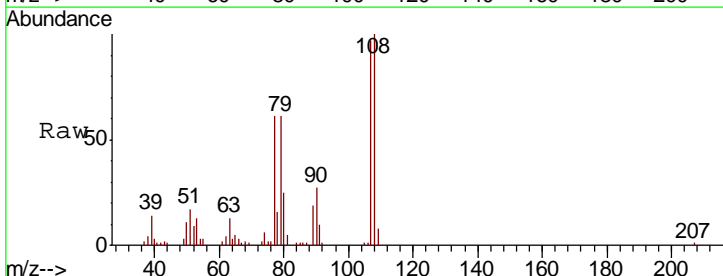
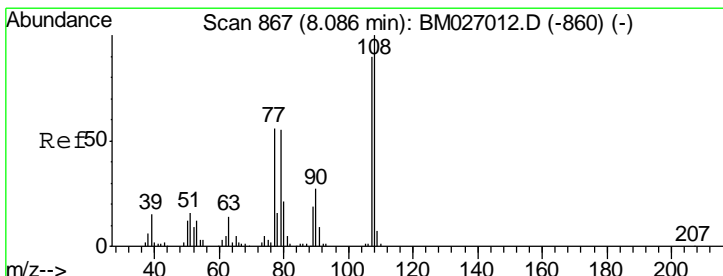
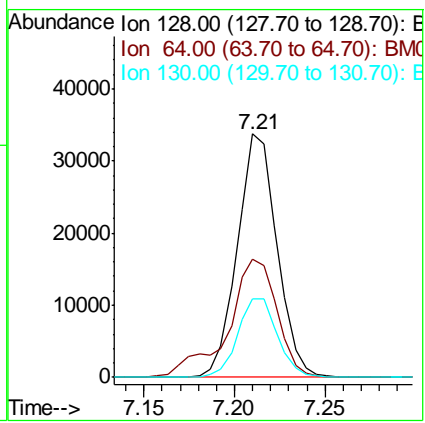




#10
 2-Chlorophenol
 Concen: 10.095 ng/ul
 RT: 7.21 min Scan# 718
 Delta R.T. -0.01 min
 Lab File: BM027011.D
 Acq: 06 Aug 2020 19:36

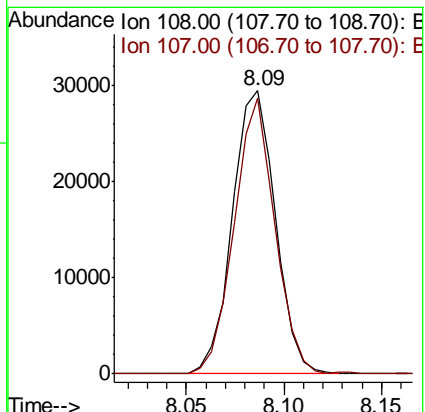
Instrument :
 BNA_M
 ClientSampled :
 SSTD01001

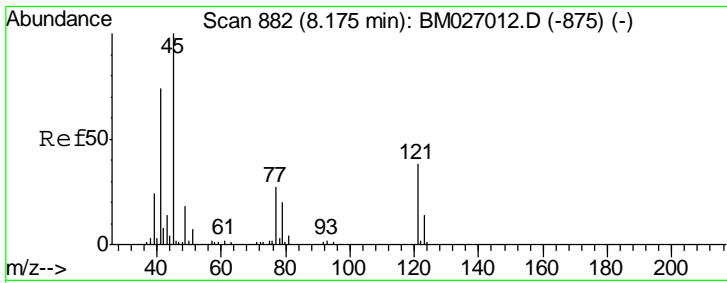
Tgt Ion	Resp	Lower	Upper
128	51344		
64	48.7	39.4	59.2
130	32.0	25.4	38.2



#11
 2-Methylphenol
 Concen: 9.279 ng/ul
 RT: 8.09 min Scan# 867
 Delta R.T. 0.00 min
 Lab File: BM027011.D
 Acq: 06 Aug 2020 19:36

Tgt Ion	Resp	Lower	Upper
108	44871		
107	97.5	71.8	107.6

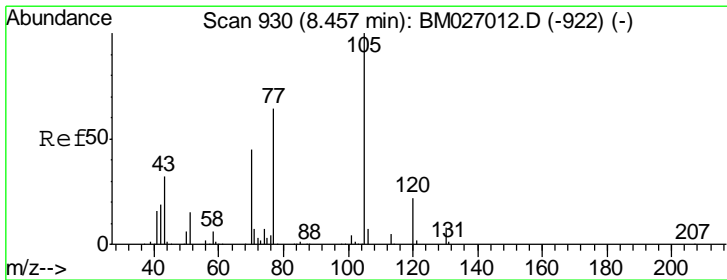
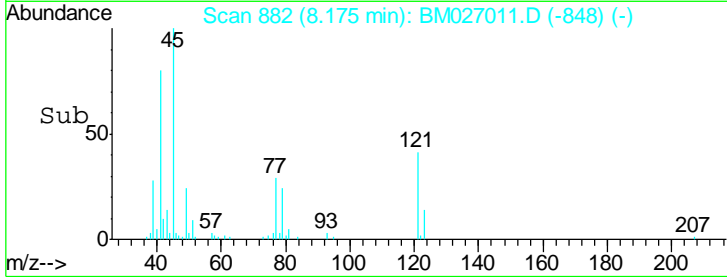
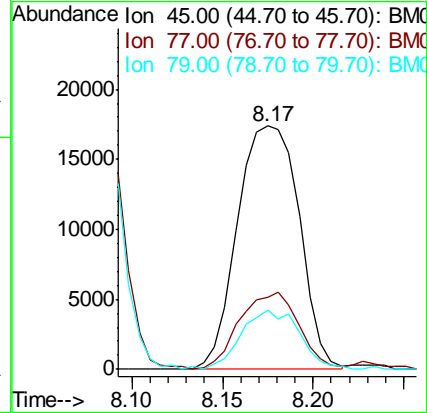
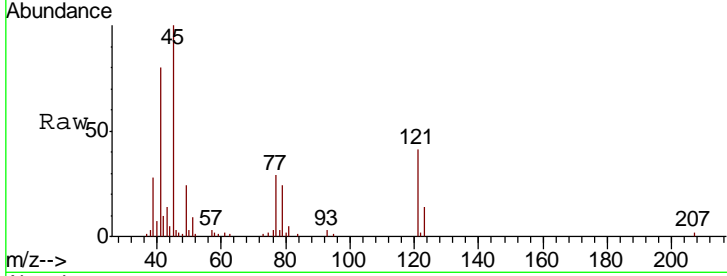




#12
 2,2'-oxybis(1-Chloropropane)
 Concen: 10.718 ng/ul
 RT: 8.17 min Scan# 882
 Delta R.T. 0.00 min
 Lab File: BM027011.D
 Acq: 06 Aug 2020 19:36

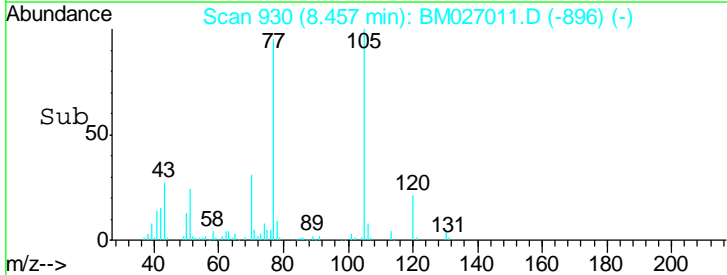
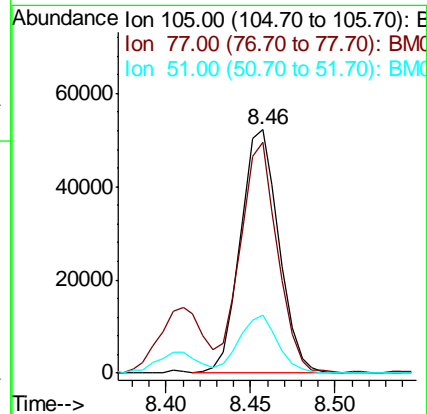
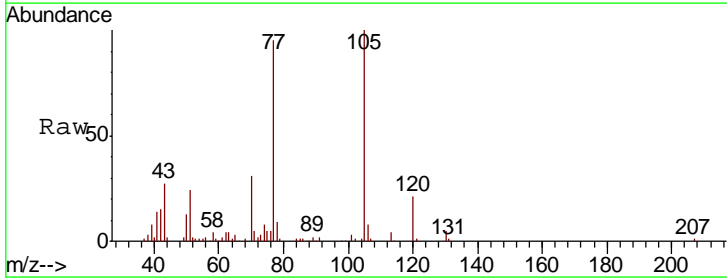
Instrument :
 BNA_M
 ClientSampleId :
 SSTD01001

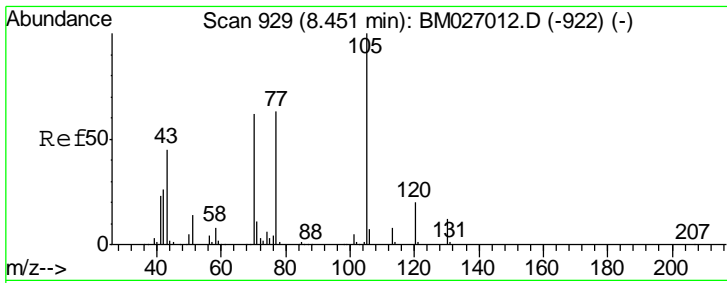
Tgt Ion	Resp	Lower	Upper
45	41180		
77	29.5	22.2	33.2
79	24.3	16.3	24.5



#14
 Acetophenone
 Concen: 10.006 ng/ul
 RT: 8.46 min Scan# 930
 Delta R.T. 0.00 min
 Lab File: BM027011.D
 Acq: 06 Aug 2020 19:36

Tgt Ion	Resp	Lower	Upper
105	82659		
77	94.7	75.7	113.5
51	23.6	19.1	28.7

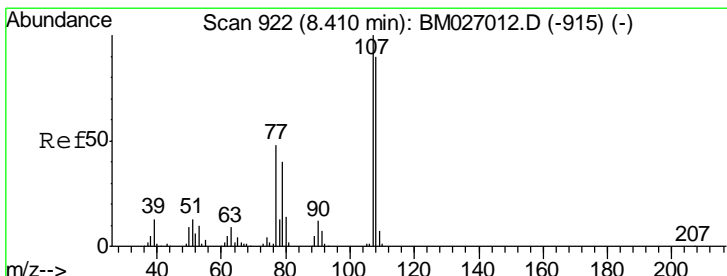
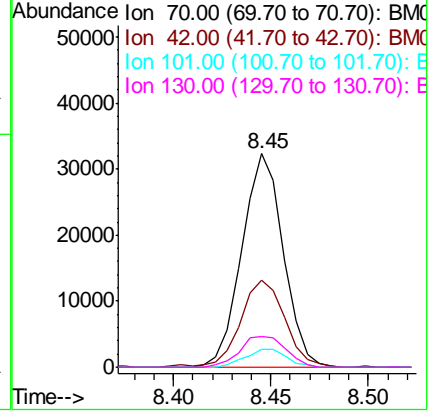
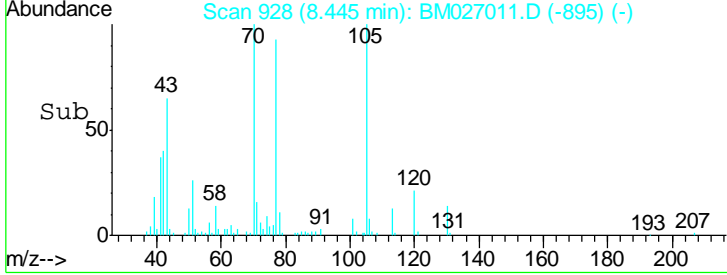
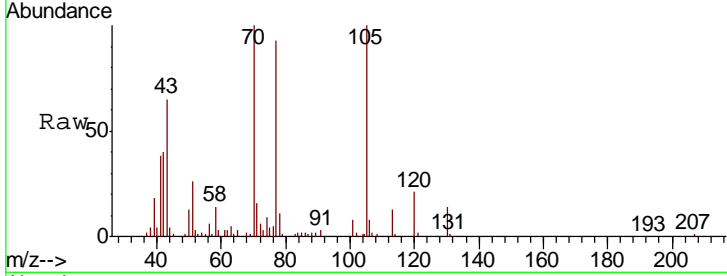




#15
 N-Nitroso-di-n-propylamine
 Concen: 10.226 ng/ul
 RT: 8.45 min Scan# 928
 Delta R.T. -0.01 min
 Lab File: BM027011.D
 Acq: 06 Aug 2020 19:36

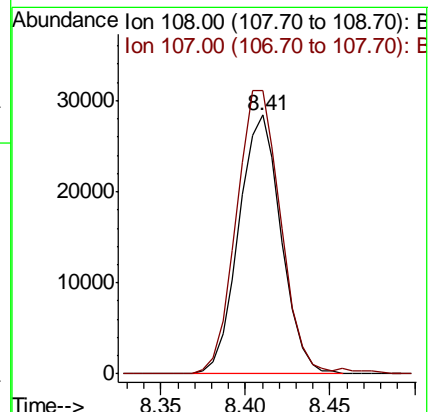
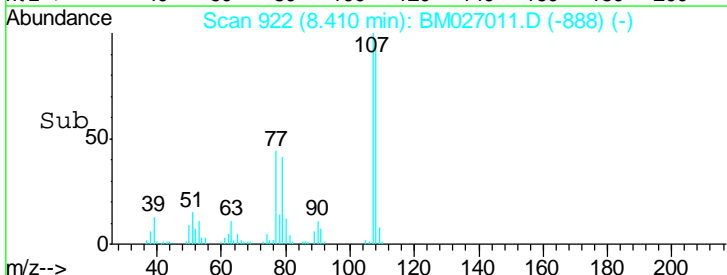
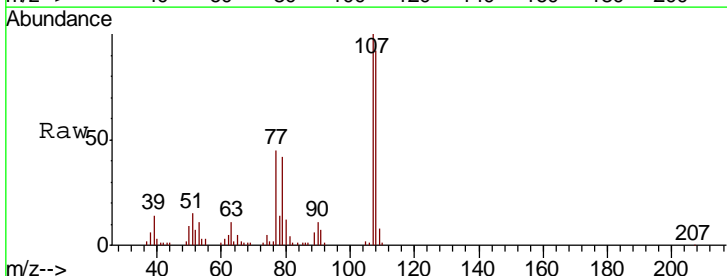
Instrument :
 BNA_M
ClientSampled :
 SSTD01001

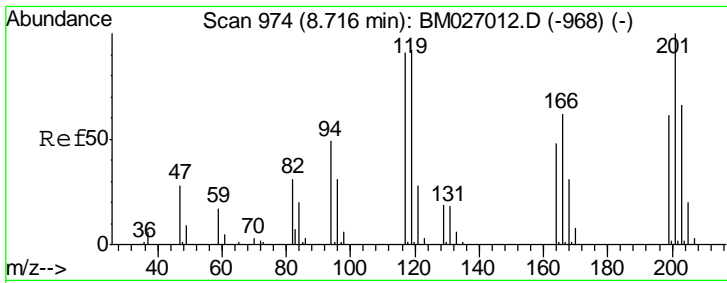
Tgt Ion	Resp	Lower	Upper
70	100		
42	40.6	34.2	51.2
101	8.2	6.8	10.2
130	14.5	15.1	22.7#



#16
 4-Methylphenol
 Concen: 9.579 ng/ul
 RT: 8.41 min Scan# 922
 Delta R.T. 0.00 min
 Lab File: BM027011.D
 Acq: 06 Aug 2020 19:36

Tgt Ion	Resp	Lower	Upper
108	100		
107	109.3	89.2	133.8

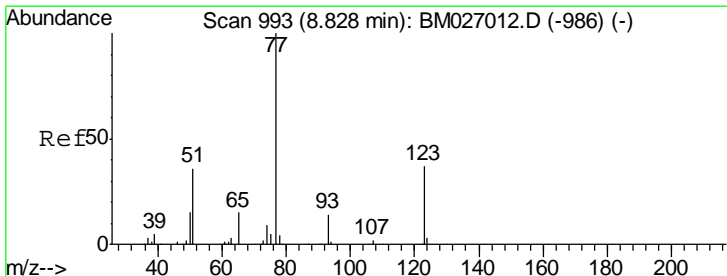
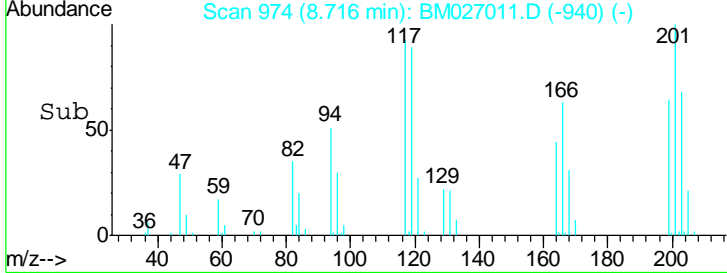
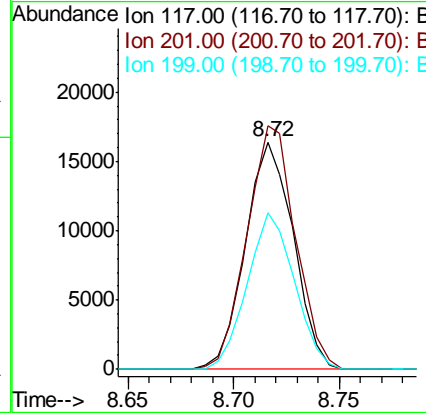
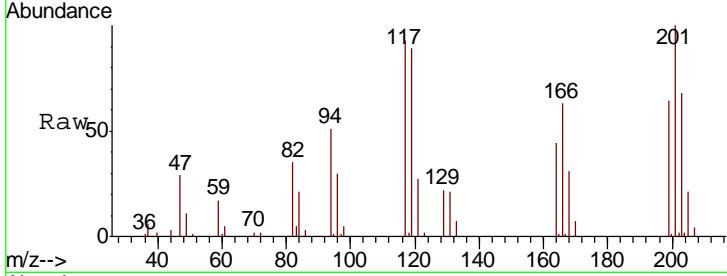




#17
 Hexachloroethane
 Concen: 10.143 ng/ul
 RT: 8.72 min Scan# 974
 Delta R.T. 0.00 min
 Lab File: BM027011.D
 Acq: 06 Aug 2020 19:36

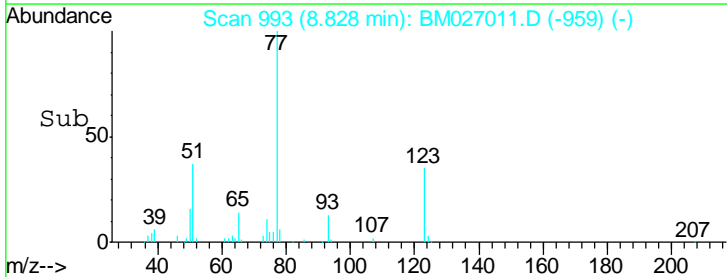
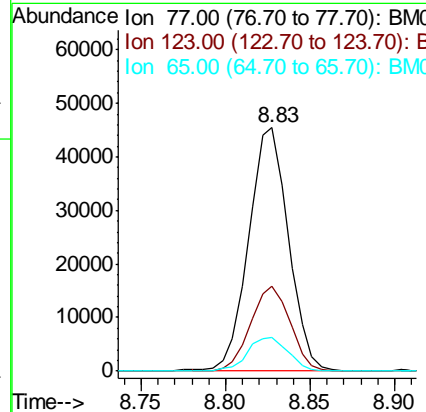
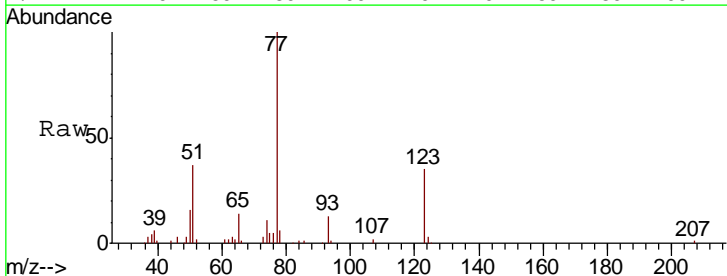
Instrument :
 BNA_M
ClientSampled :
 SST01001

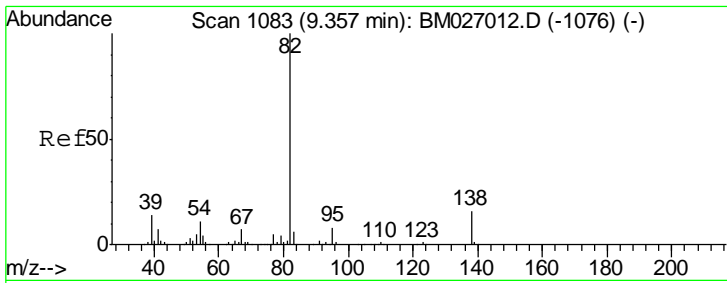
Tgt Ion	Resp	Lower	Upper
117	100		
201	107.2	87.8	131.8
199	68.9	53.6	80.4



#20
 Nitrobenzene
 Concen: 10.641 ng/ul
 RT: 8.83 min Scan# 993
 Delta R.T. 0.00 min
 Lab File: BM027011.D
 Acq: 06 Aug 2020 19:36

Tgt Ion	Resp	Lower	Upper
77	100		
123	34.7	29.7	44.5
65	13.6	11.7	17.5

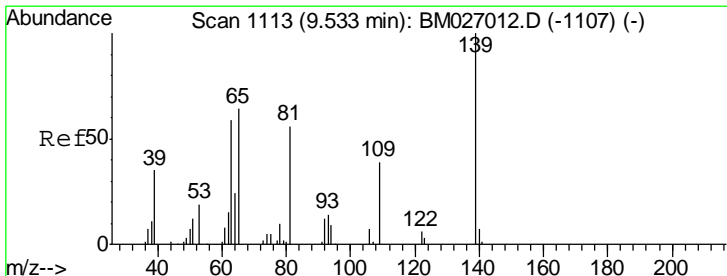
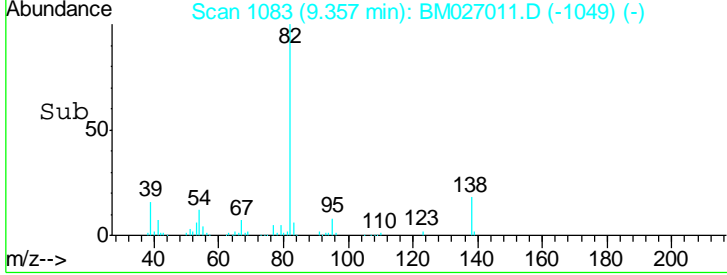
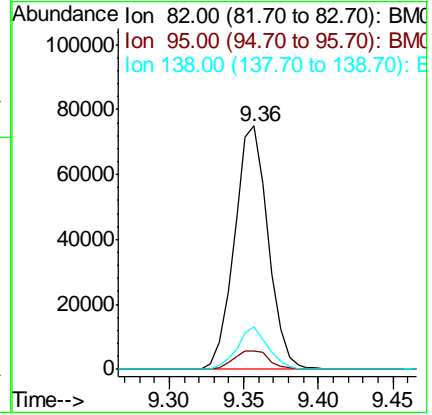
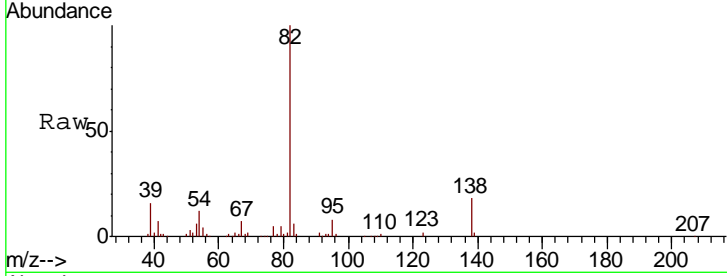




#21
 Isophorone
 Concen: 10.550 ng/ul
 RT: 9.36 min Scan# 1083
 Delta R.T. 0.00 min
 Lab File: BM027011.D
 Acq: 06 Aug 2020 19:36

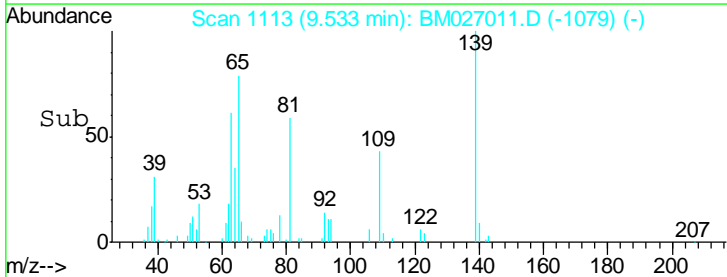
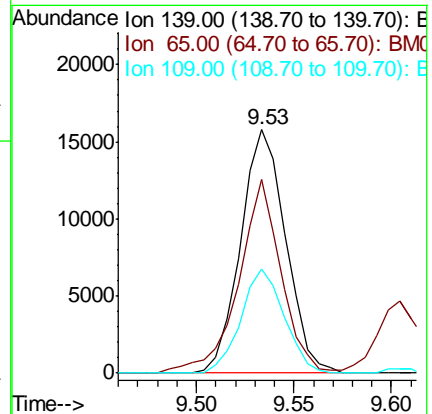
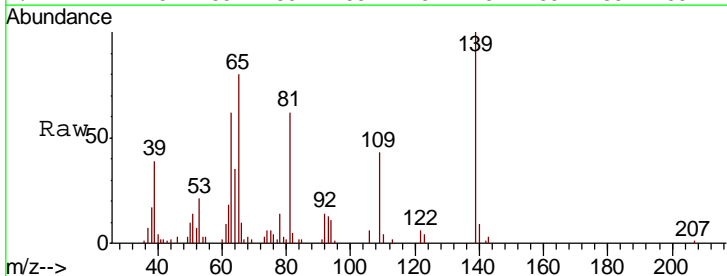
Instrument :
 BNA_M
 ClientSampled :
 SSTD01001

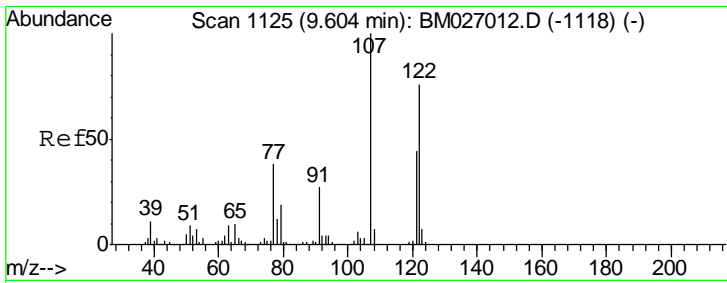
Tgt Ion	Resp	Lower	Upper
82	117778		
95	7.5	6.6	9.8
138	17.5	12.6	19.0



#23
 2-Nitrophenol
 Concen: 9.793 ng/ul
 RT: 9.53 min Scan# 1113
 Delta R.T. 0.00 min
 Lab File: BM027011.D
 Acq: 06 Aug 2020 19:36

Tgt Ion	Resp	Lower	Upper
139	25223		
65	79.8	54.5	81.7
109	42.5	31.4	47.0

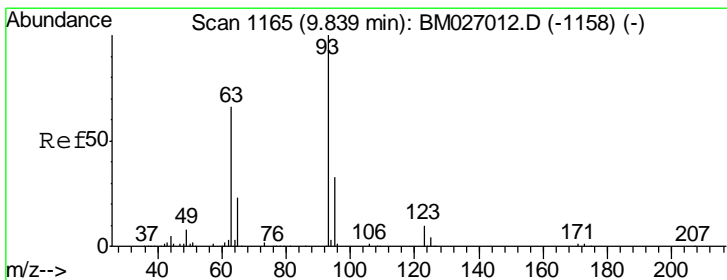
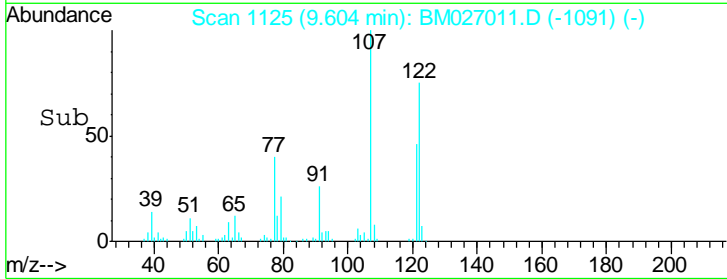
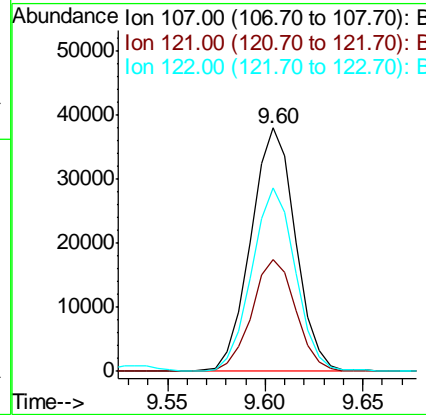
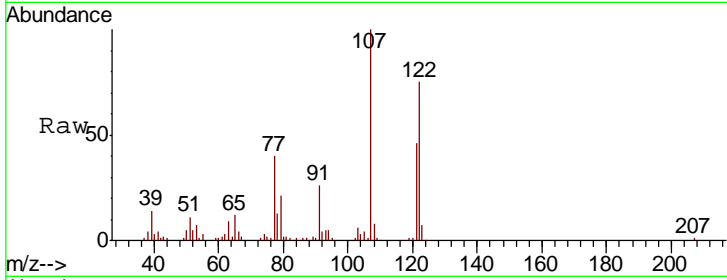




#24
 2,4-Dimethylphenol
 Concen: 10.345 ng/ul
 RT: 9.60 min Scan# 1125
 Delta R.T. 0.00 min
 Lab File: BM027011.D
 Acq: 06 Aug 2020 19:36

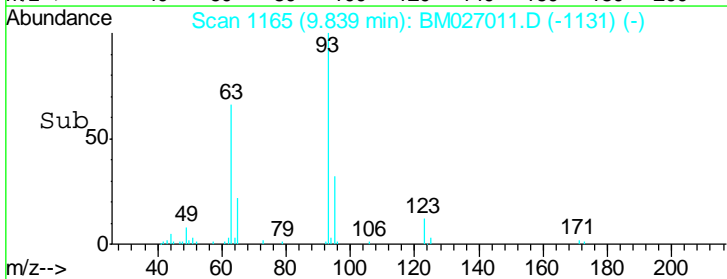
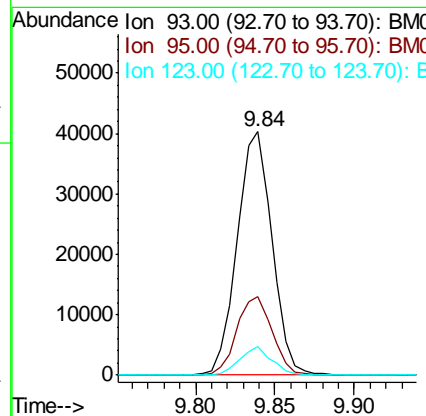
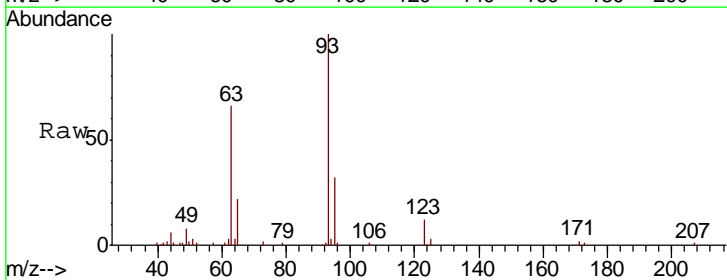
Instrument :
 BNA_M
 ClientSampleID :
 SST01001

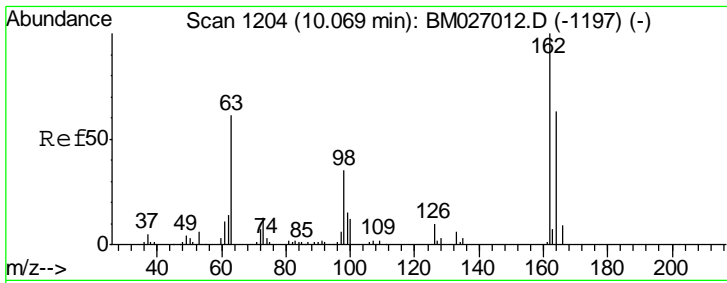
Tgt Ion	Resp	Lower	Upper
107	60024		
107	100		
121	45.9	35.4	53.2
122	75.2	60.8	91.2



#25
 Bis(2-Chloroethoxy)methane
 Concen: 9.409 ng/ul
 RT: 9.84 min Scan# 1165
 Delta R.T. 0.00 min
 Lab File: BM027011.D
 Acq: 06 Aug 2020 19:36

Tgt Ion	Resp	Lower	Upper
93	61425		
93	100		
95	32.0	26.3	39.5
123	11.8	8.3	12.5

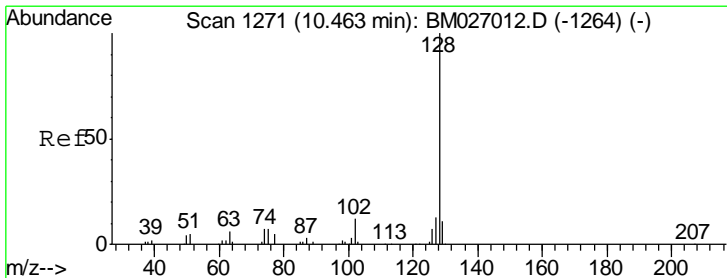
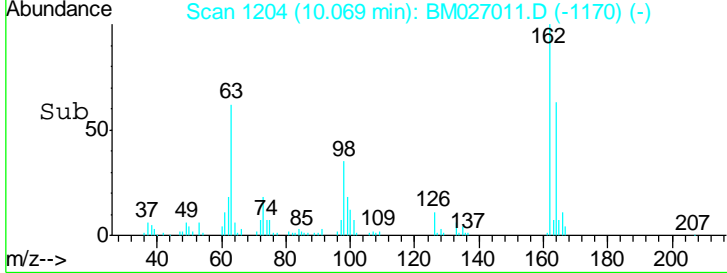
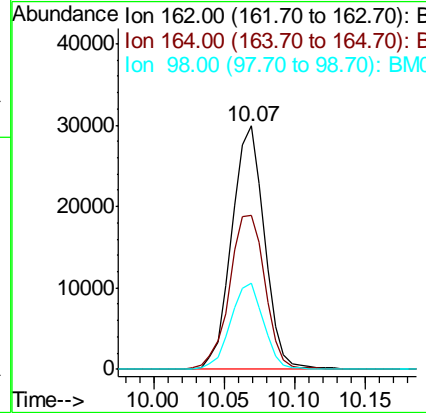
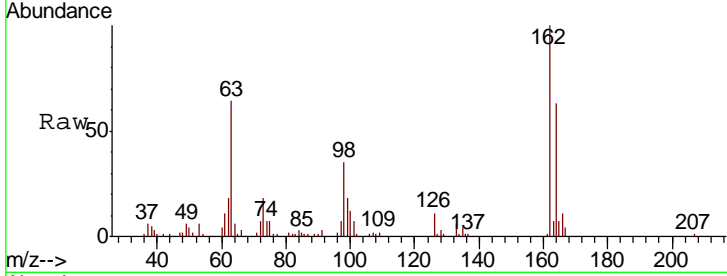




#27
 2,4-Dichlorophenol
 Concen: 9.695 ng/ul
 RT: 10.07 min Scan# 1204
 Delta R.T. 0.00 min
 Lab File: BM027011.D
 Acq: 06 Aug 2020 19:36

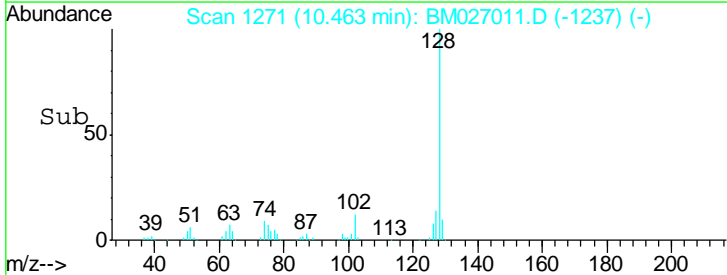
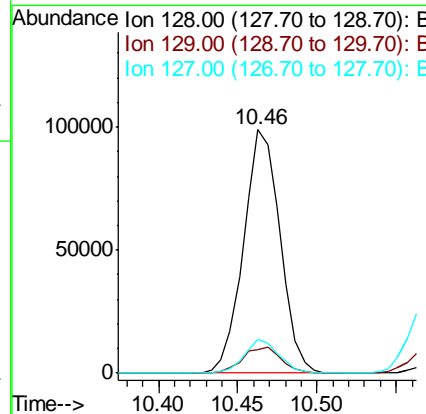
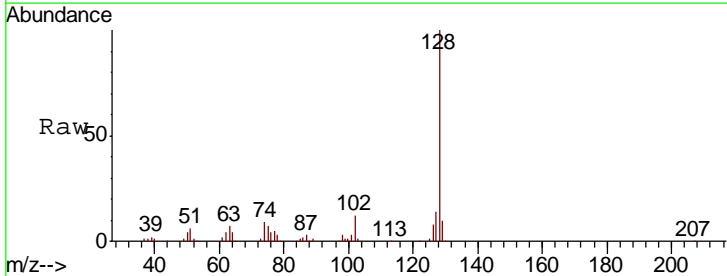
Instrument :
 BNA_M
 ClientSampled :
 SSTD01001

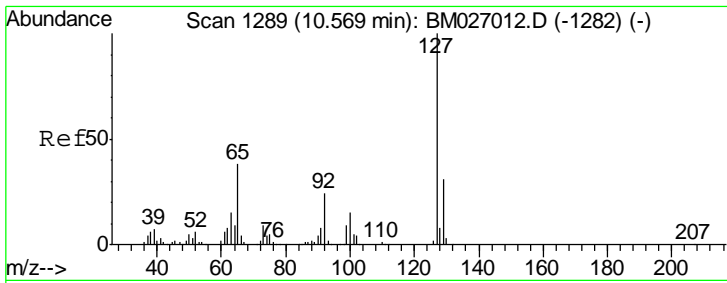
Tgt Ion	Resp	Lower	Upper
162	48490		
164	63.3	51.4	77.2
98	35.3	28.4	42.6



#28
 Naphthalene
 Concen: 10.410 ng/ul
 RT: 10.46 min Scan# 1271
 Delta R.T. 0.00 min
 Lab File: BM027011.D
 Acq: 06 Aug 2020 19:36

Tgt Ion	Resp	Lower	Upper
128	158310		
129	9.7	9.0	13.6
127	14.0	10.5	15.7

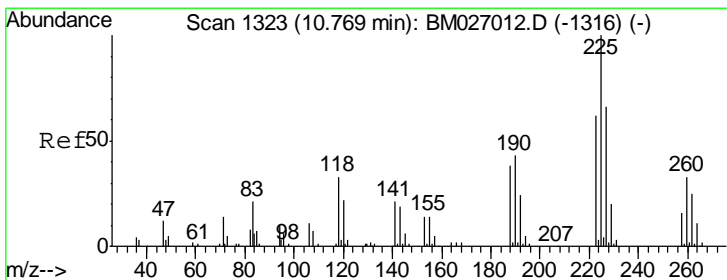
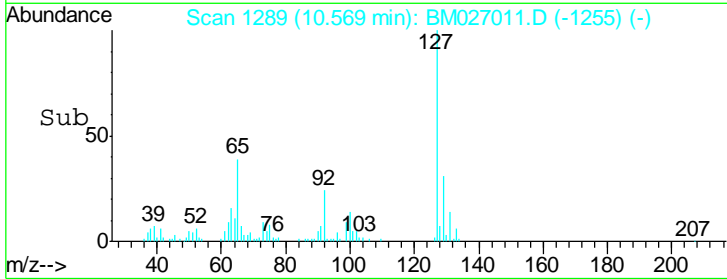
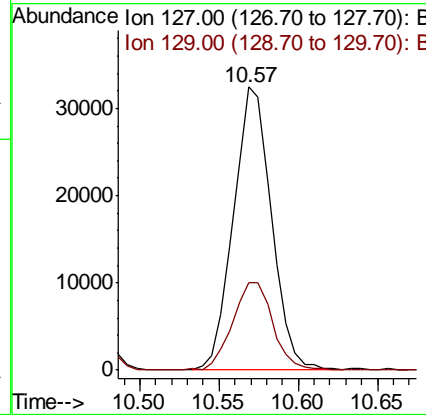
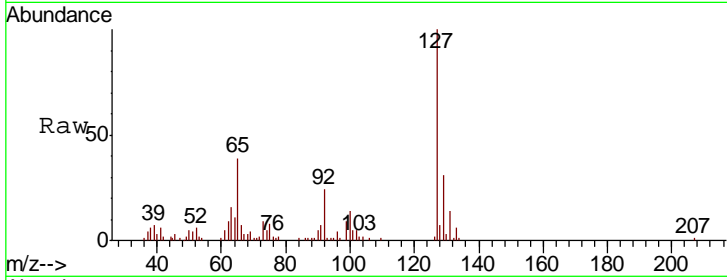




#30
 4-Chloroaniline
 Concen: 9.757 ng/ul
 RT: 10.57 min Scan# 1289
 Delta R.T. 0.00 min
 Lab File: BM027011.D
 Acq: 06 Aug 2020 19:36

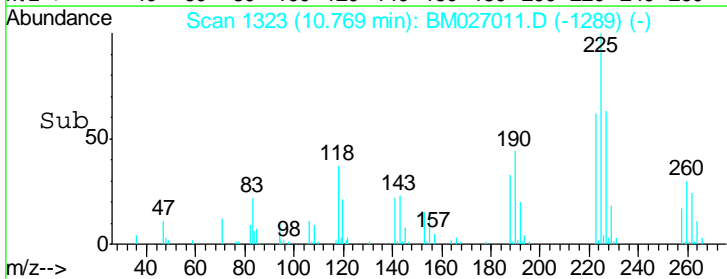
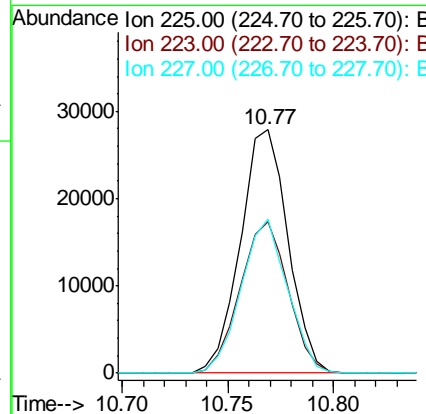
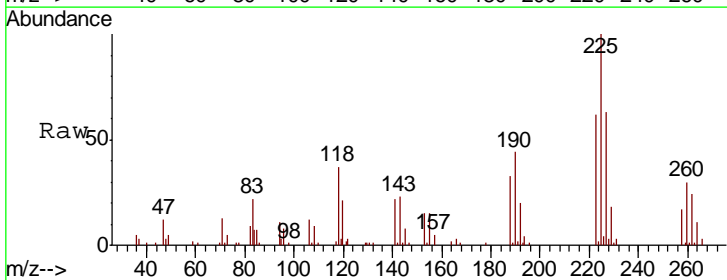
Instrument :
 BNA_M
 ClientSampled :
 SSTD01001

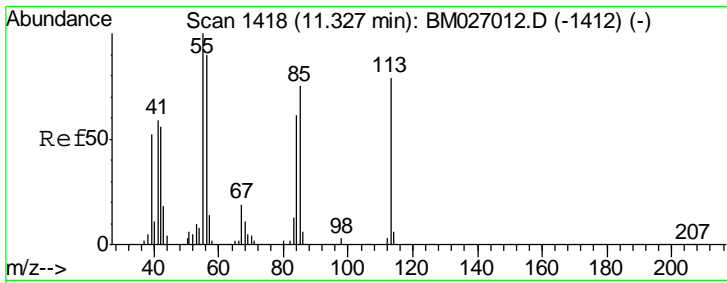
Tgt Ion	Resp	Lower	Upper
127	53984		
129	31.1	24.9	37.3



#31
 Hexachlorobutadiene
 Concen: 9.912 ng/ul
 RT: 10.77 min Scan# 1323
 Delta R.T. 0.00 min
 Lab File: BM027011.D
 Acq: 06 Aug 2020 19:36

Tgt Ion	Resp	Lower	Upper
225	43726		
223	62.1	49.8	74.8
227	63.3	52.5	78.7

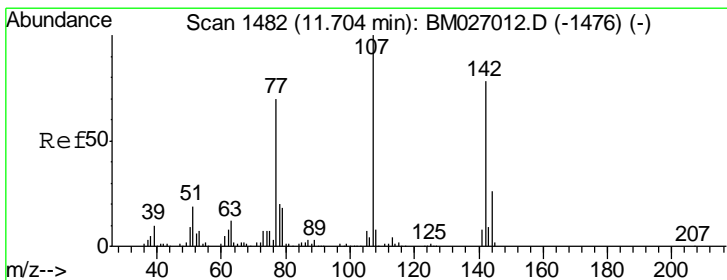
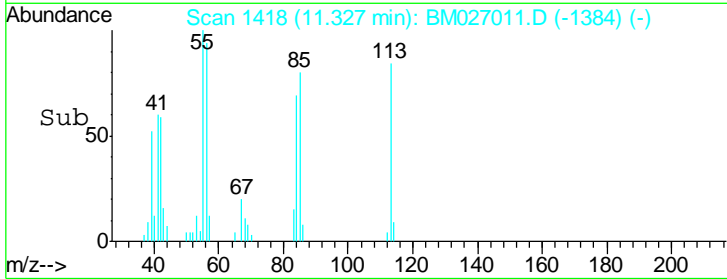
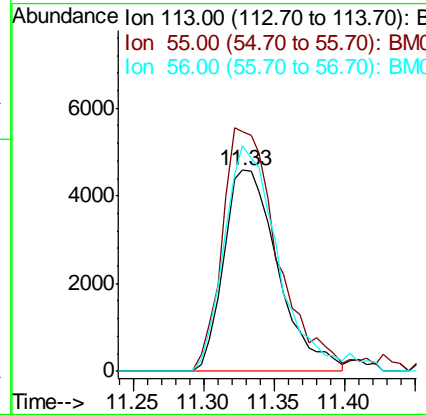
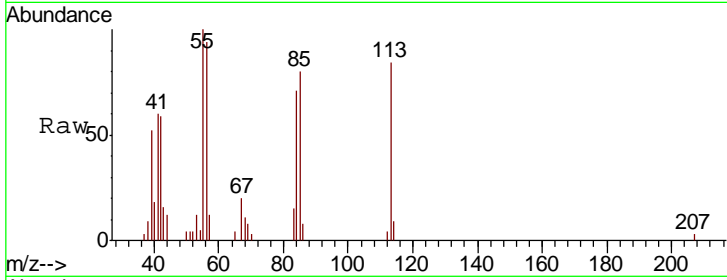




#32
 Caprolactam
 Concen: 9.209 ng/ul
 RT: 11.33 min Scan# 1418
 Delta R.T. 0.00 min
 Lab File: BM027011.D
 Acq: 06 Aug 2020 19:36

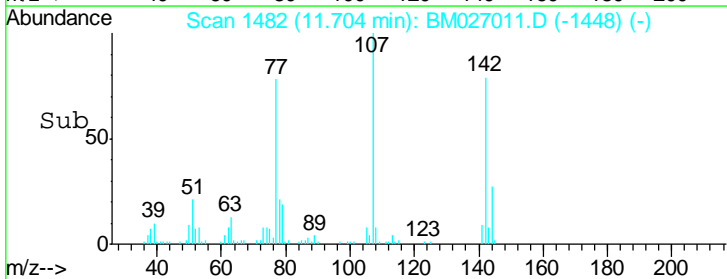
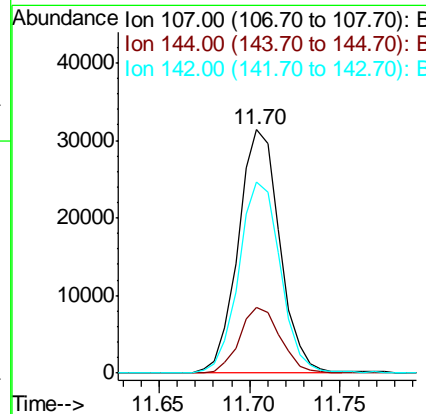
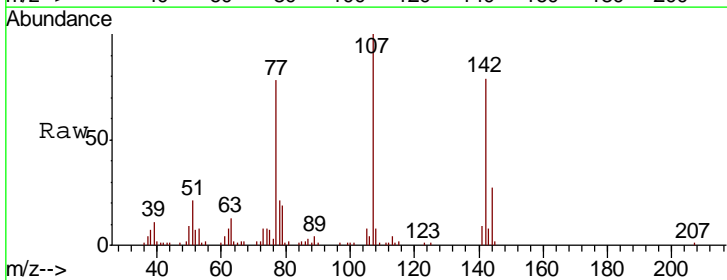
Instrument :
 BNA_M
 ClientSampled :
 SSTD01001

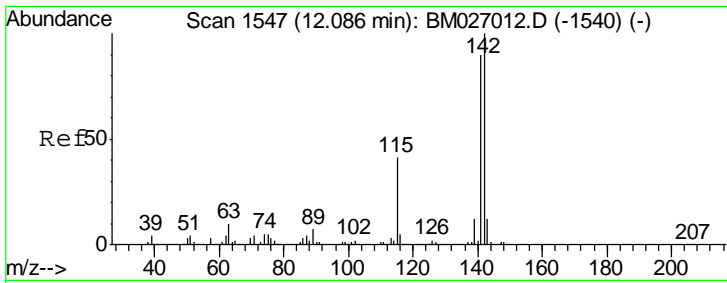
Tgt Ion	Resp	Lower	Upper
113	12296		
55	119.1	101.3	151.9
56	112.1	90.9	136.3



#33
 4-Chloro-3-methylphenol
 Concen: 9.891 ng/ul
 RT: 11.70 min Scan# 1482
 Delta R.T. 0.00 min
 Lab File: BM027011.D
 Acq: 06 Aug 2020 19:36

Tgt Ion	Resp	Lower	Upper
107	49969		
144	26.9	20.7	31.1
142	78.5	62.6	94.0

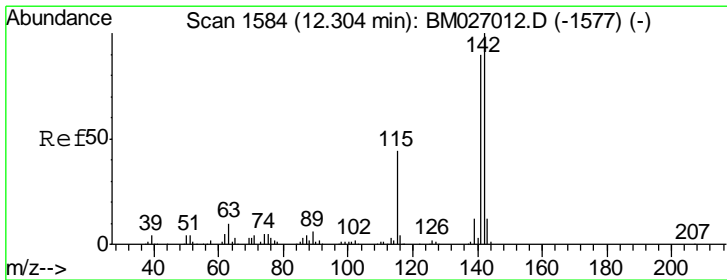
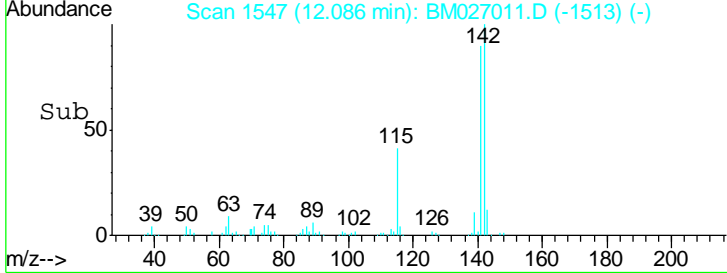
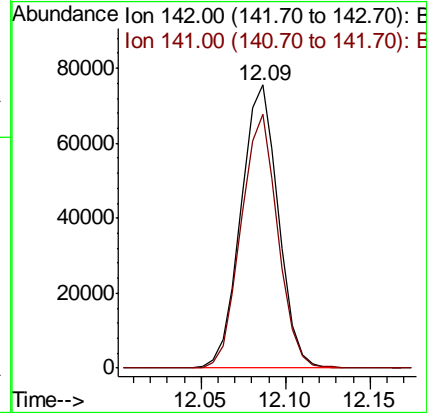
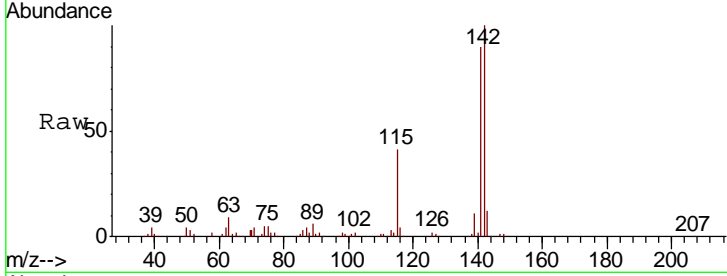




#34
 2-Methylnaphthalene
 Concen: 10.269 ng/ul
 RT: 12.09 min Scan# 1547
 Delta R.T. 0.00 min
 Lab File: BM027011.D
 Acq: 06 Aug 2020 19:36

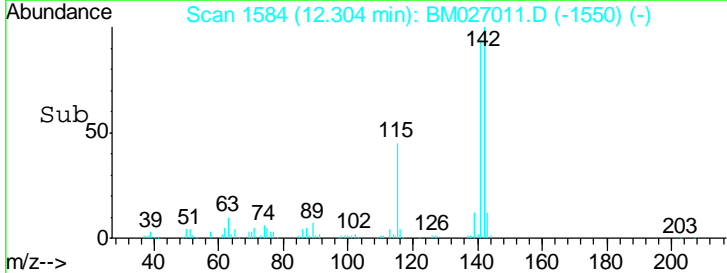
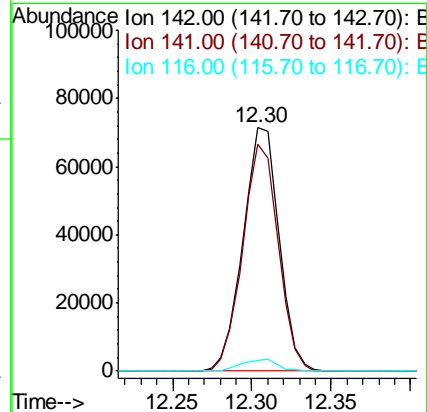
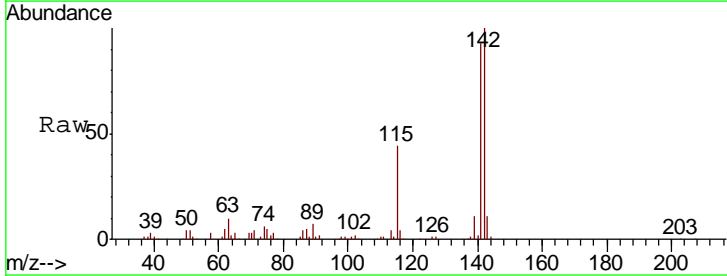
Instrument :
 BNA_M
 ClientSampled :
 SSTD01001

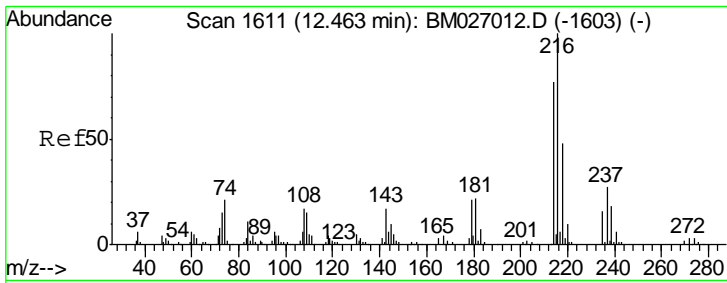
Tgt Ion:142 Resp: 116280
 Ion Ratio Lower Upper
 142 100
 141 89.7 72.4 108.6



#35
 1-Methylnaphthalene
 Concen: 10.036 ng/ul
 RT: 12.30 min Scan# 1584
 Delta R.T. 0.00 min
 Lab File: BM027011.D
 Acq: 06 Aug 2020 19:36

Tgt Ion:142 Resp: 112624
 Ion Ratio Lower Upper
 142 100
 141 93.1 72.2 108.2
 116 4.4 3.4 5.0

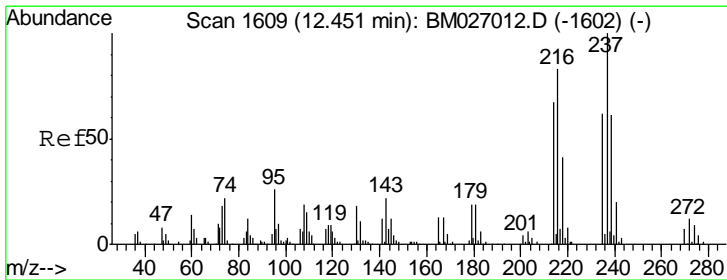
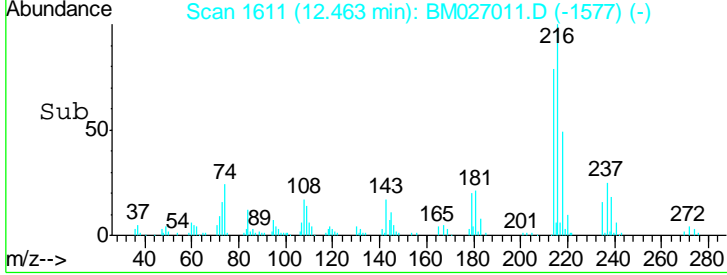
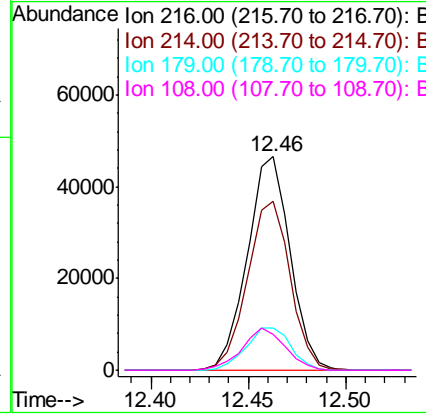
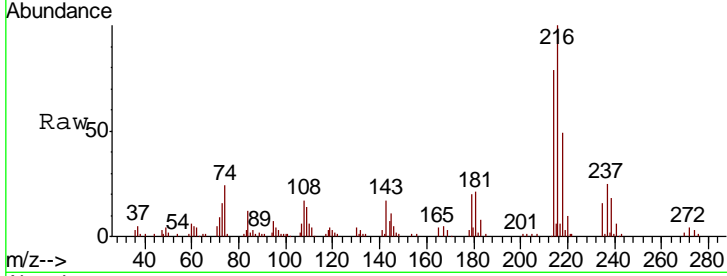




#37
 1,2,4,5-Tetrachlorobenzene
 Concen: 9.181 ng/ul
 RT: 12.46 min Scan# 1611
 Delta R.T. 0.00 min
 Lab File: BM027011.D
 Acq: 06 Aug 2020 19:36

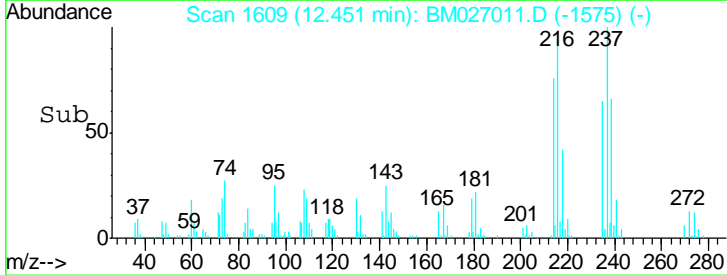
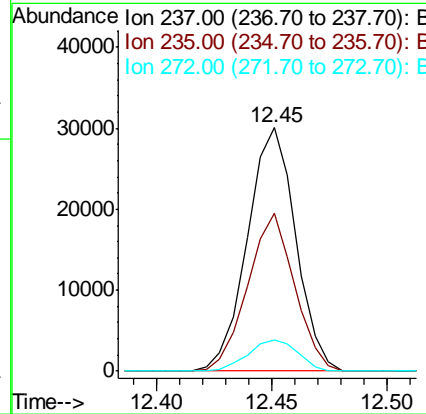
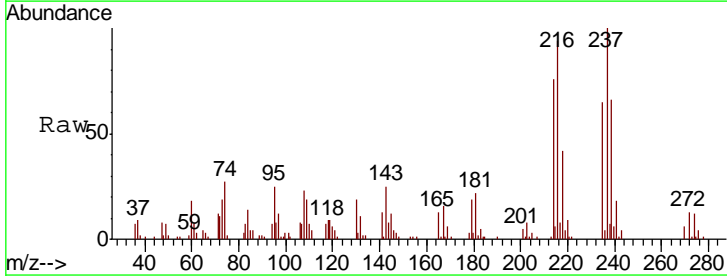
Instrument :
 BNA_M
 ClientSampleId :
 SSTD01001

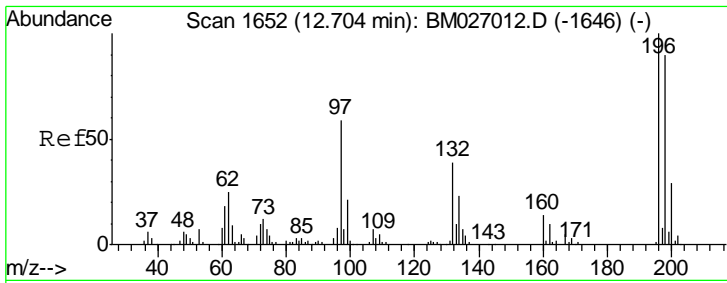
Tgt Ion	Resp	Lower	Upper
216	70787		
214	79.0	61.4	92.2
179	20.0	16.8	25.2
108	16.8	13.7	20.5



#38
 Hexachlorocyclopentadiene
 Concen: 8.644 ng/ul
 RT: 12.45 min Scan# 1609
 Delta R.T. 0.00 min
 Lab File: BM027011.D
 Acq: 06 Aug 2020 19:36

Tgt Ion	Resp	Lower	Upper
237	43822		
235	64.6	49.5	74.3
272	13.5	9.4	14.0

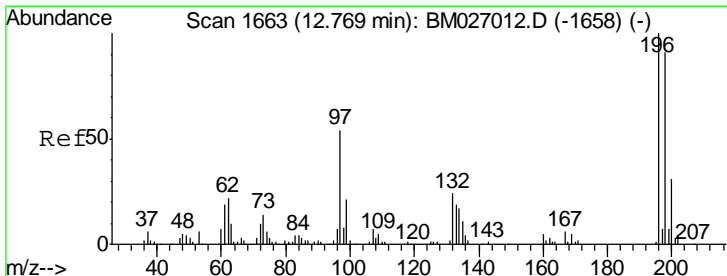
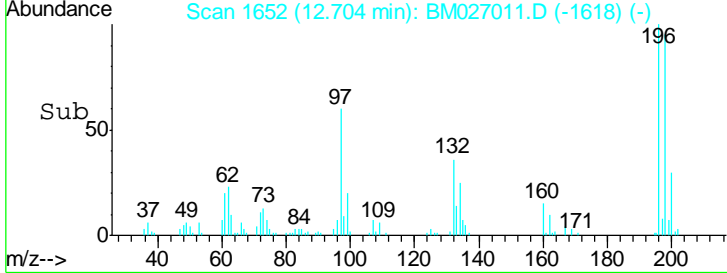
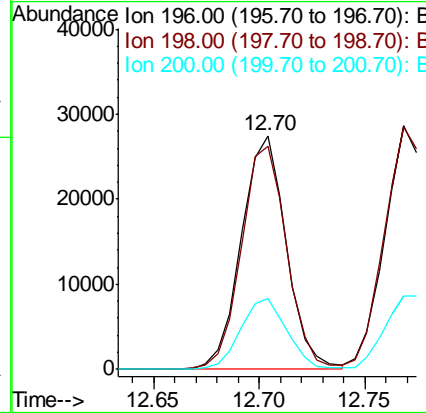
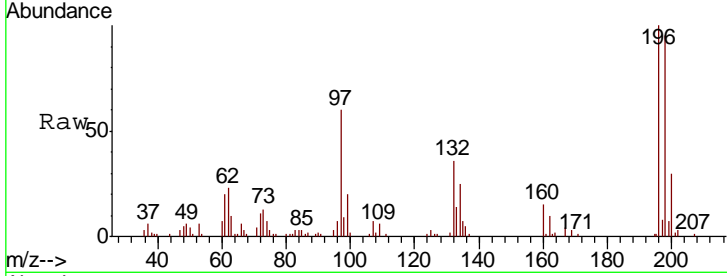




#39
 2,4,6-Trichlorophenol
 Concen: 9.437 ng/ul
 RT: 12.70 min Scan# 1652
 Delta R.T. 0.00 min
 Lab File: BM027011.D
 Acq: 06 Aug 2020 19:36

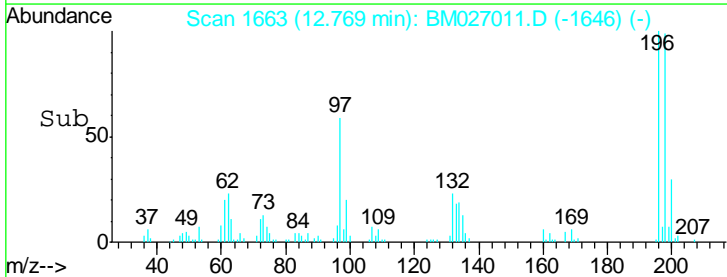
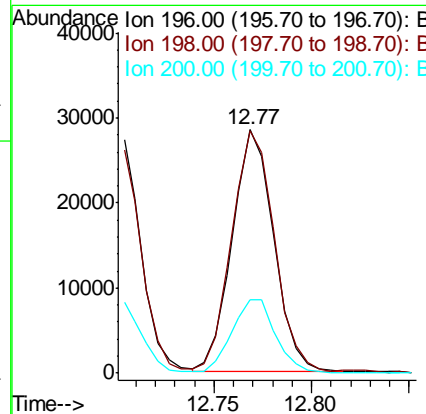
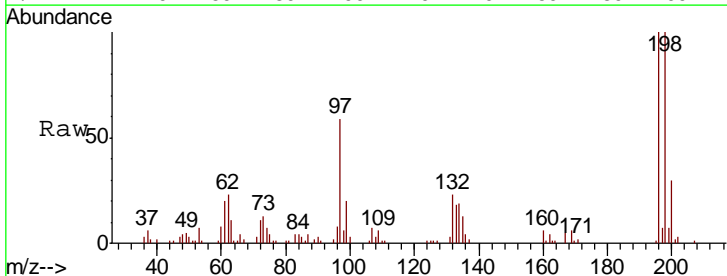
Instrument :
 BNA_M
 ClientSampled :
 SST01001

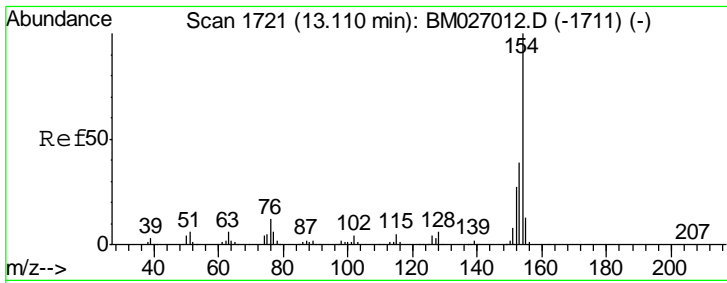
Tgt Ion	Resp	Lower	Upper
196	40426		
198	95.3	72.1	108.1
200	30.3	23.4	35.2



#40
 2,4,5-Trichlorophenol
 Concen: 8.760 ng/ul
 RT: 12.77 min Scan# 1663
 Delta R.T. 0.00 min
 Lab File: BM027011.D
 Acq: 06 Aug 2020 19:36

Tgt Ion	Resp	Lower	Upper
196	41687		
198	99.6	72.7	109.1
200	30.1	24.6	36.8

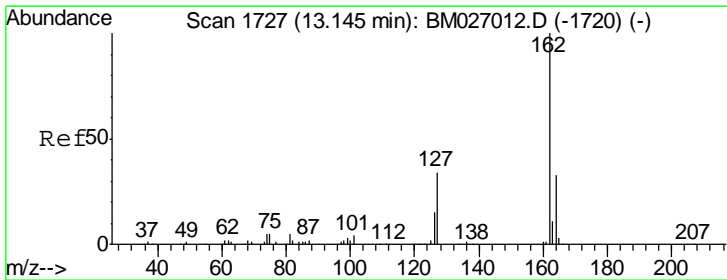
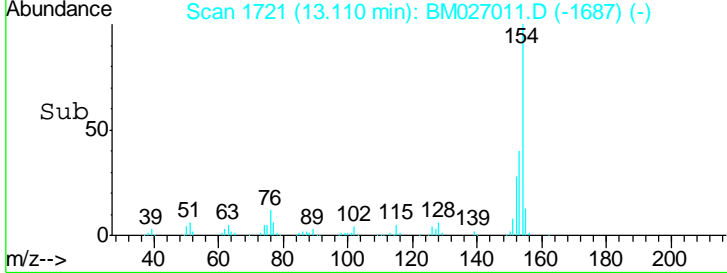
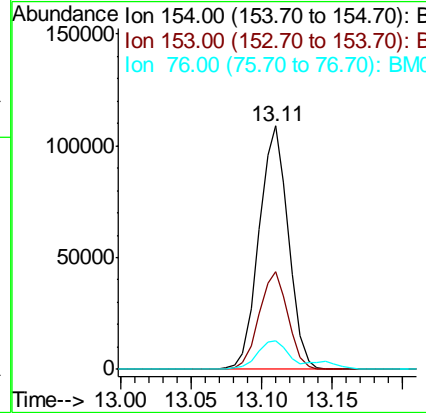
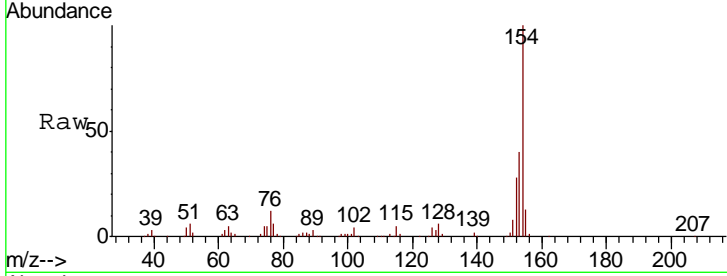




#41
 1,1'-Biphenyl
 Concen: 10.276 ng/ul
 RT: 13.11 min Scan# 1721
 Delta R.T. 0.00 min
 Lab File: BM027011.D
 Acq: 06 Aug 2020 19:36

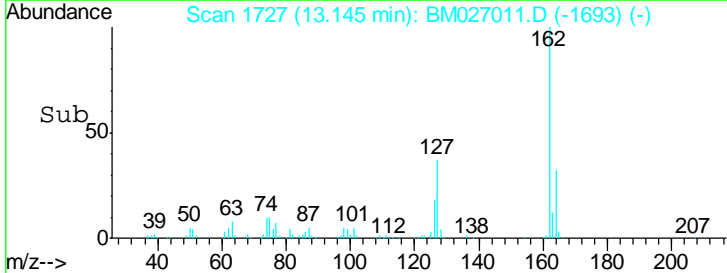
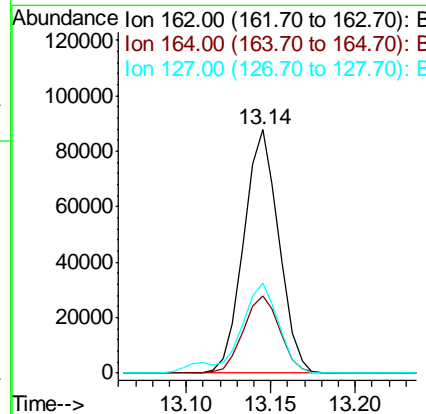
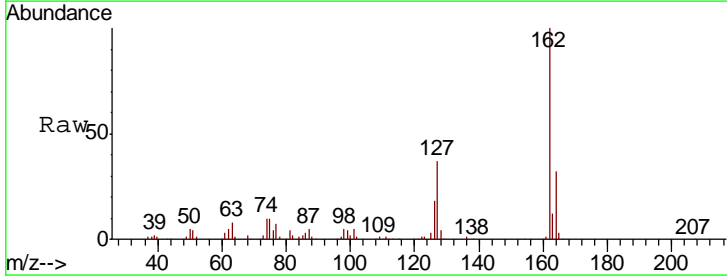
Instrument :
 BNA_M
 ClientSampled :
 SSTD01001

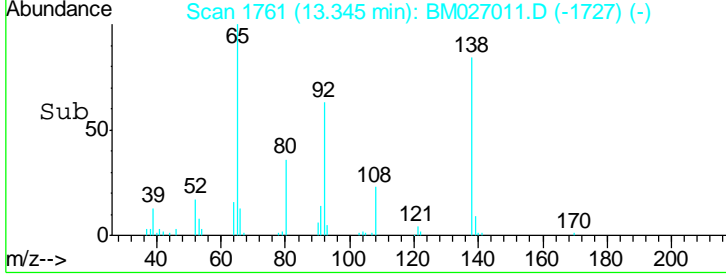
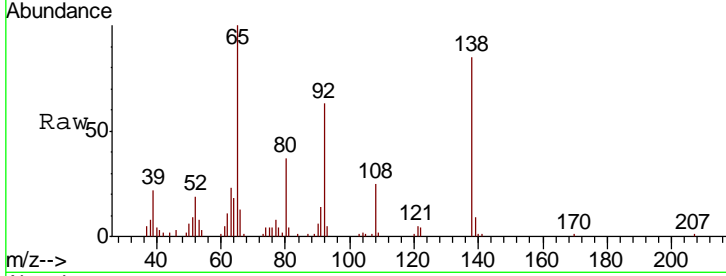
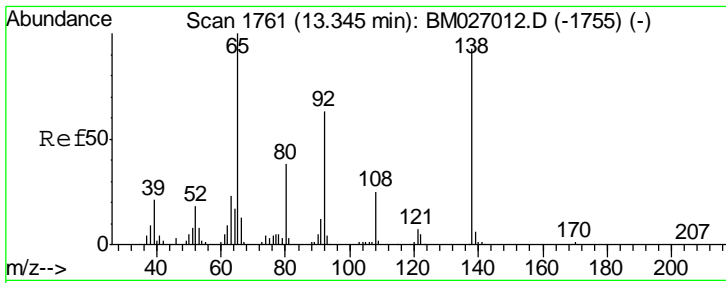
Tgt Ion	Resp	Lower	Upper
154	159098		
153	39.9	31.6	47.4
76	11.9	9.3	13.9



#42
 2-Chloronaphthalene
 Concen: 10.077 ng/ul
 RT: 13.14 min Scan# 1727
 Delta R.T. 0.00 min
 Lab File: BM027011.D
 Acq: 06 Aug 2020 19:36

Tgt Ion	Resp	Lower	Upper
162	127225		
164	31.9	26.5	39.7
127	37.2	30.0	45.0

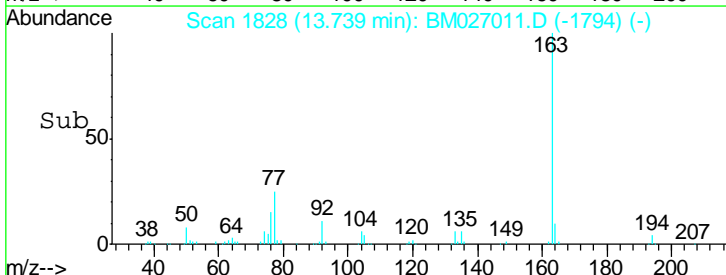
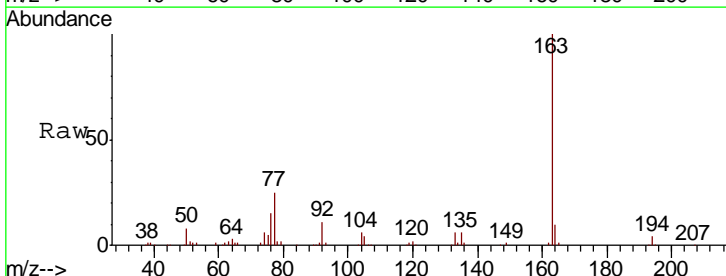
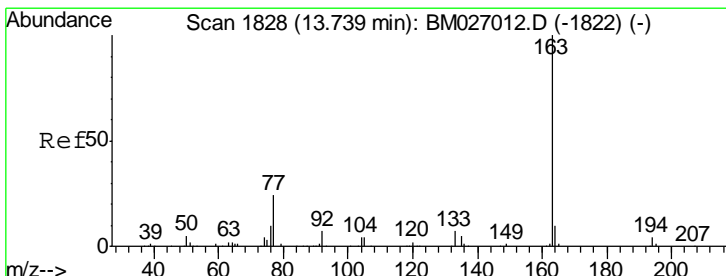
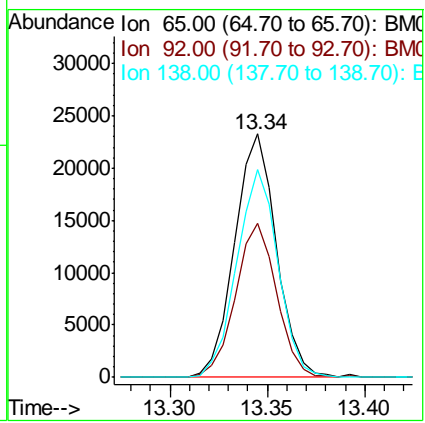




#43
 2-Nitroaniline
 Concen: 9.640 ng/ul
 RT: 13.34 min Scan# 1761
 Delta R.T. 0.00 min
 Lab File: BM027011.D
 Acq: 06 Aug 2020 19:36

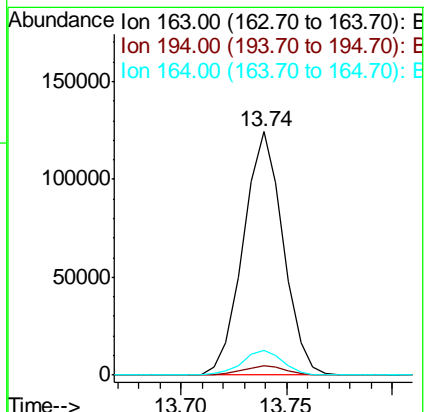
Instrument :
 BNA_M
 ClientSampleID :
 SSTD01001

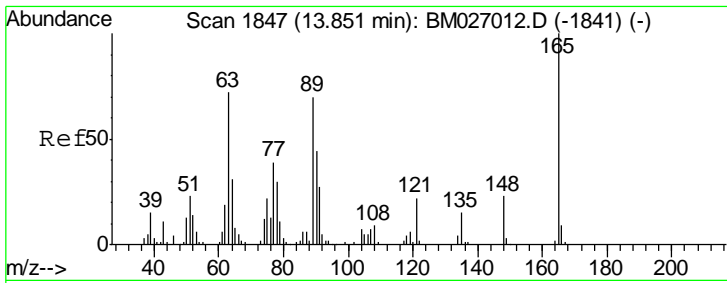
Tgt Ion	Resp	Lower	Upper
65	100		
92	63.2	50.5	75.7
138	85.1	74.6	111.8



#45
 Dimethylphthalate
 Concen: 10.042 ng/ul
 RT: 13.74 min Scan# 1828
 Delta R.T. 0.00 min
 Lab File: BM027011.D
 Acq: 06 Aug 2020 19:36

Tgt Ion	Resp	Lower	Upper
163	100		
194	4.1	3.2	4.8
164	10.1	8.2	12.2

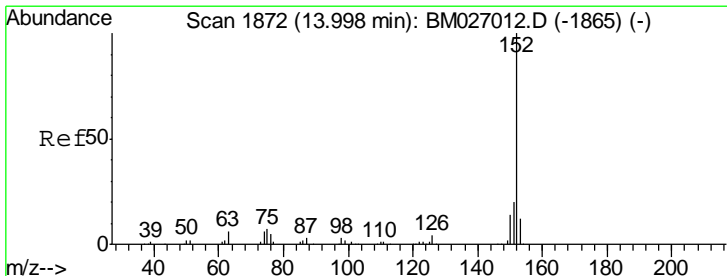
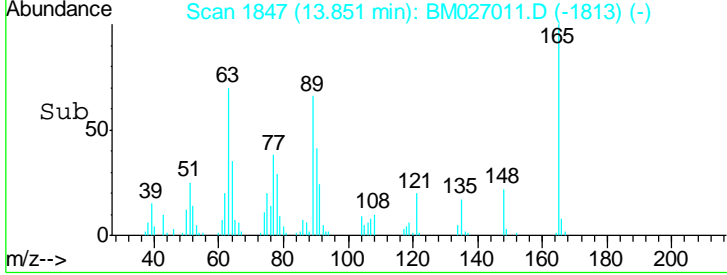
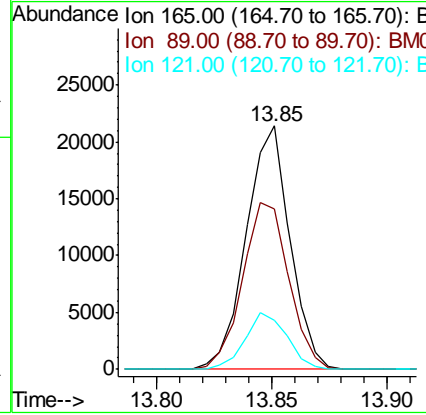
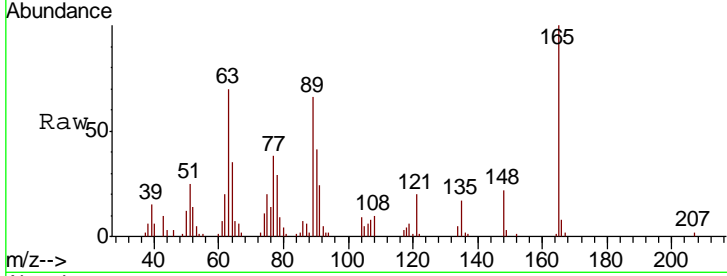




#46
 2,6-Dinitrotoluene
 Concen: 9.106 ng/ul
 RT: 13.85 min Scan# 1847
 Delta R.T. 0.00 min
 Lab File: BM027011.D
 Acq: 06 Aug 2020 19:36

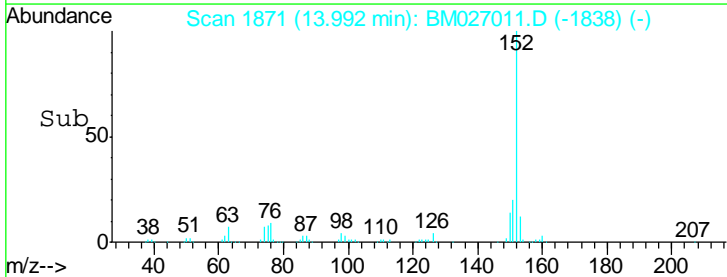
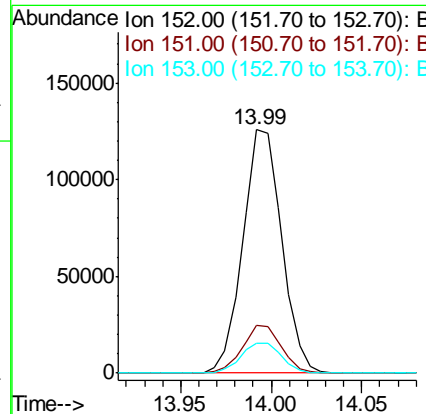
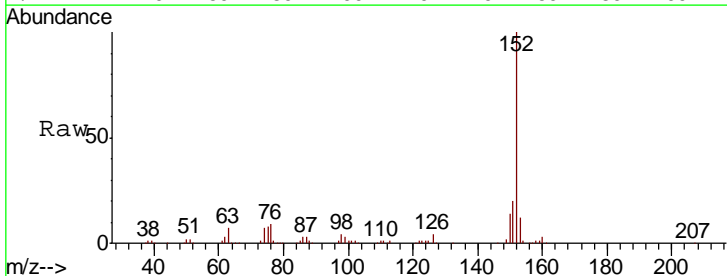
Instrument :
 BNA_M
 ClientSampled :
 SSTD01001

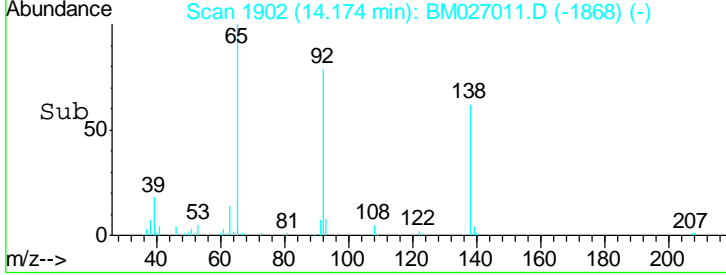
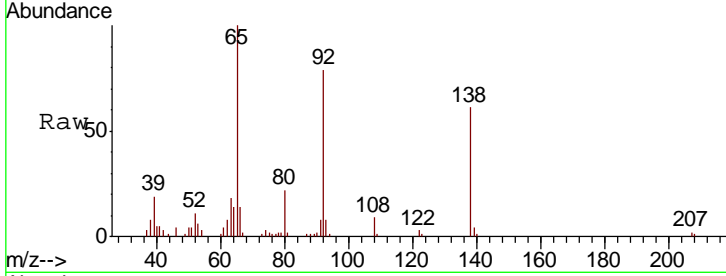
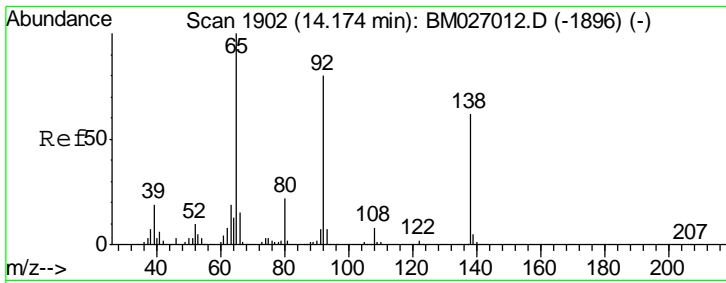
Tgt Ion	Resp	Lower	Upper
165	100		
89	66.1	56.1	84.1
121	20.3	17.9	26.9



#48
 Acenaphthylene
 Concen: 10.122 ng/ul
 RT: 13.99 min Scan# 1871
 Delta R.T. -0.01 min
 Lab File: BM027011.D
 Acq: 06 Aug 2020 19:36

Tgt Ion	Resp	Lower	Upper
152	100		
151	19.8	15.9	23.9
153	12.1	9.8	14.8

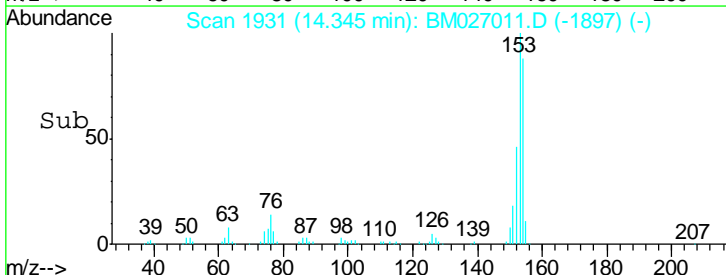
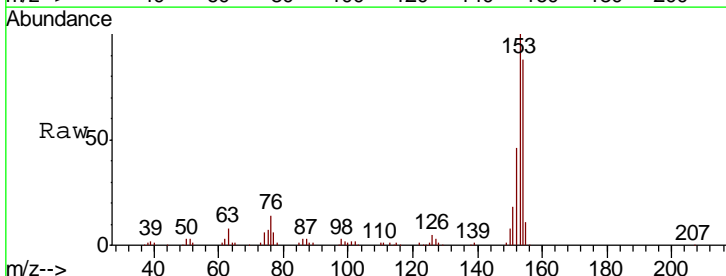
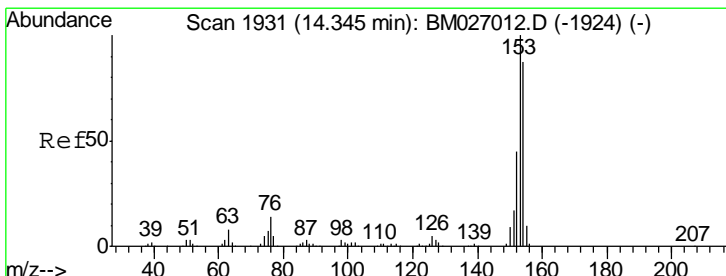
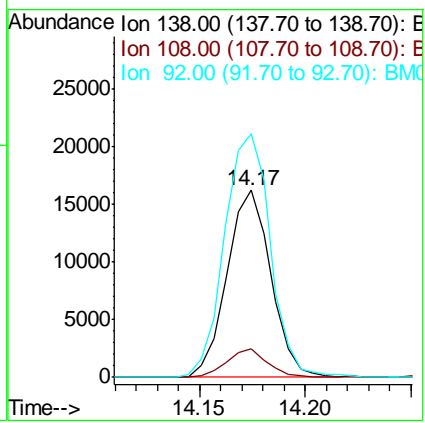




#49
 3-Nitroaniline
 Concen: 8.764 ng/ul
 RT: 14.17 min Scan# 1902
 Delta R.T. 0.00 min
 Lab File: BM027011.D
 Acq: 06 Aug 2020 19:36

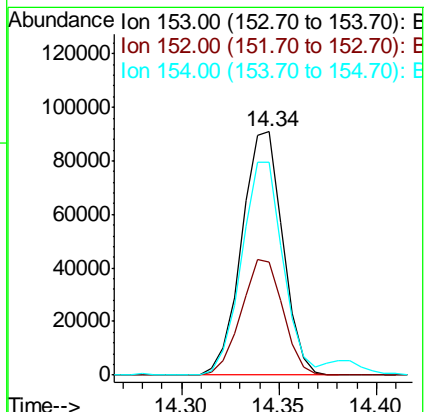
Instrument :
 BNA_M
 ClientSampled :
 SSTD01001

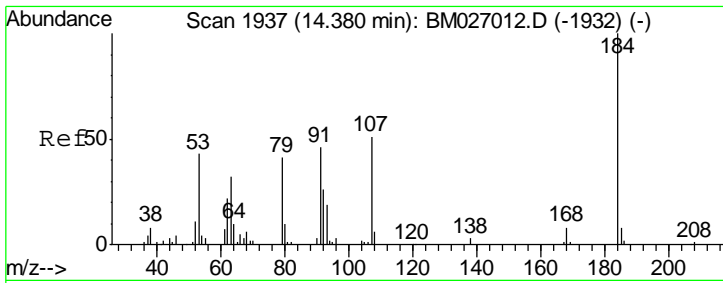
Tgt Ion	Resp	Lower	Upper
138	23365		
108	15.3	10.0	15.0#
92	130.1	104.3	156.5



#50
 Acenaphthene
 Concen: 10.100 ng/ul
 RT: 14.34 min Scan# 1931
 Delta R.T. 0.00 min
 Lab File: BM027011.D
 Acq: 06 Aug 2020 19:36

Tgt Ion	Resp	Lower	Upper
153	132630		
152	46.2	35.9	53.9
154	87.6	69.4	104.0

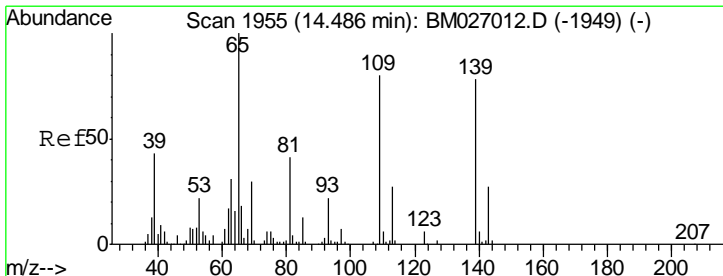
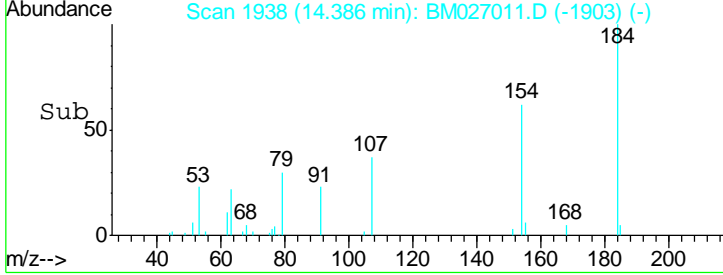
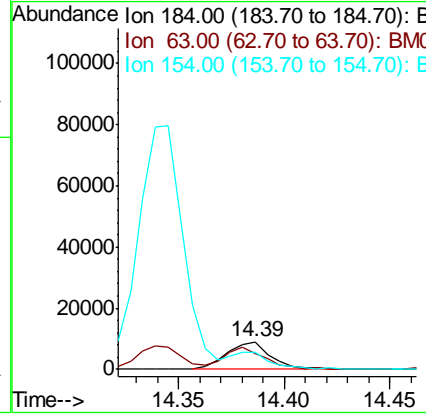
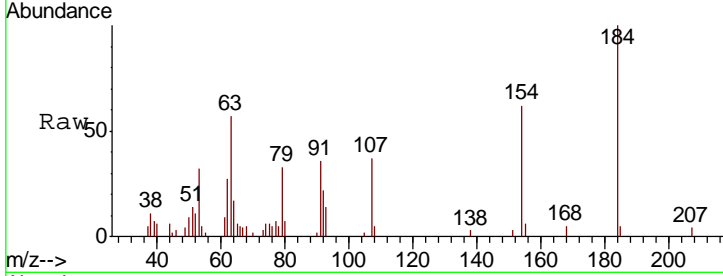




#51
 2,4-Dinitrophenol
 Concen: 7.529 ng/ul
 RT: 14.39 min Scan# 1938
 Delta R.T. 0.01 min
 Lab File: BM027011.D
 Acq: 06 Aug 2020 19:36

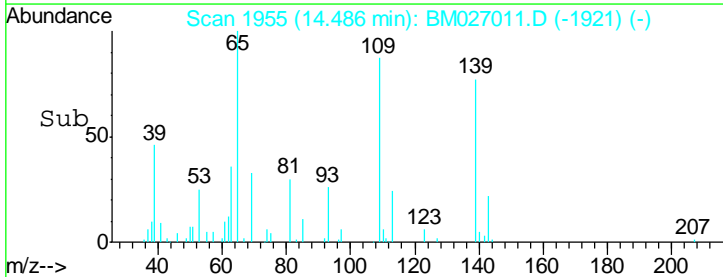
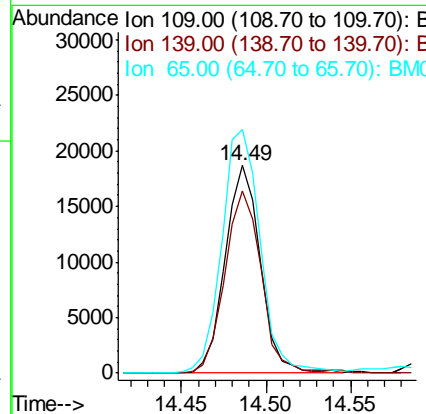
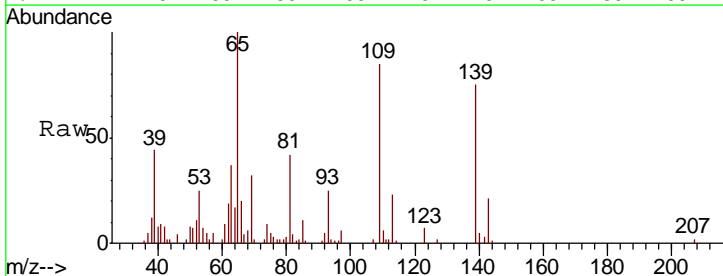
Instrument :
 BNA_M
 ClientSampled :
 SST01001

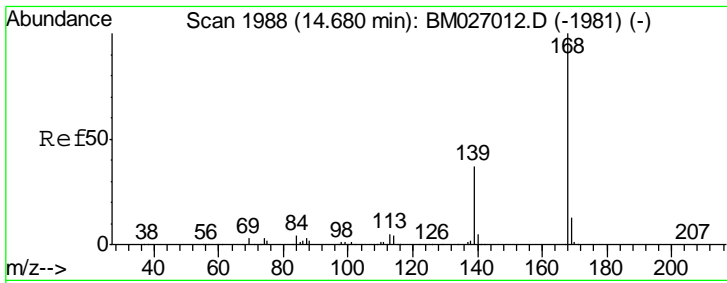
Tgt Ion	Resp	Lower	Upper
184	12774		
63	57.0	64.9	97.3#
154	61.7	56.7	85.1



#53
 4-Nitrophenol
 Concen: 9.749 ng/ul
 RT: 14.49 min Scan# 1955
 Delta R.T. 0.00 min
 Lab File: BM027011.D
 Acq: 06 Aug 2020 19:36

Tgt Ion	Resp	Lower	Upper
109	27076		
139	88.0	77.4	116.2
65	117.4	100.6	150.8

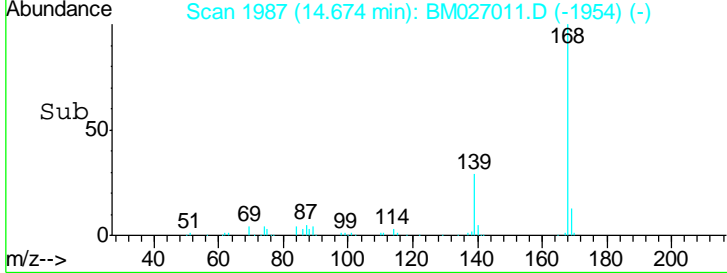
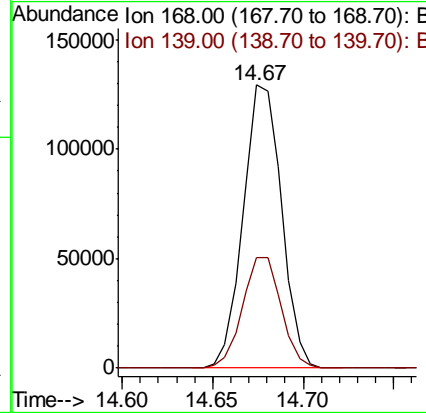
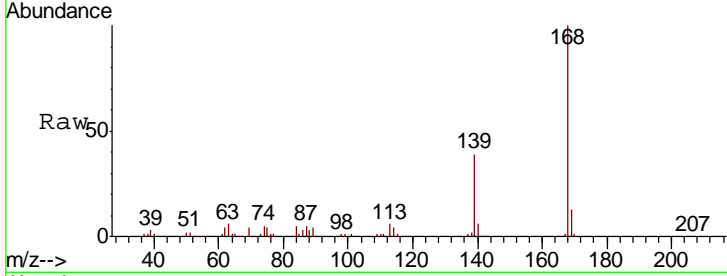




#54
 Dibenzofuran
 Concen: 9.914 ng/ul
 RT: 14.67 min Scan# 1987
 Delta R.T. -0.01 min
 Lab File: BM027011.D
 Acq: 06 Aug 2020 19:36

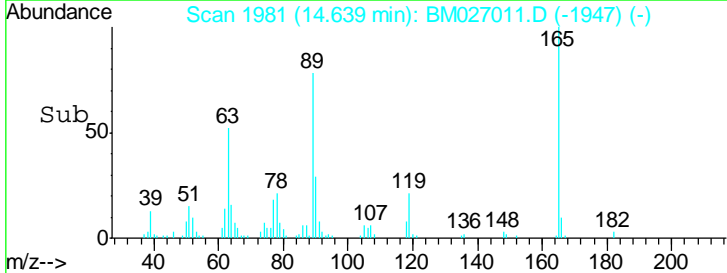
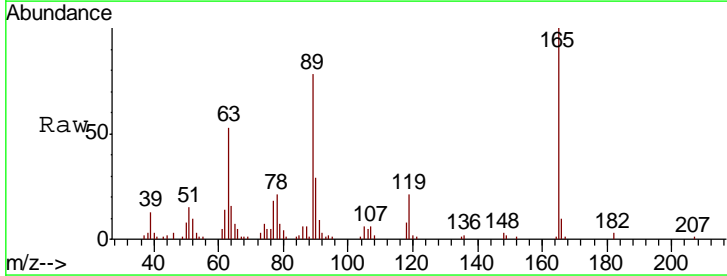
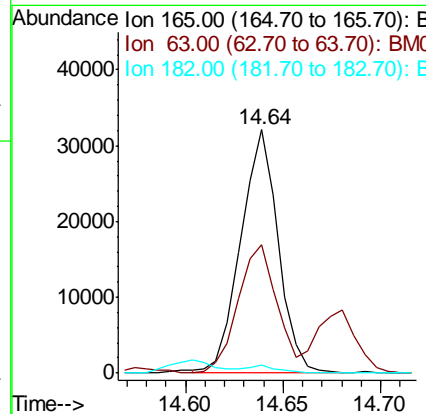
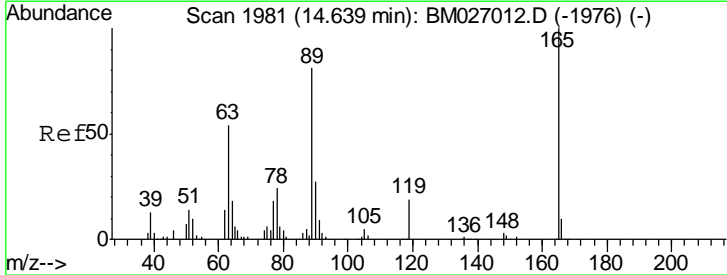
Instrument :
 BNA_M
 ClientSampled :
 SSTD01001

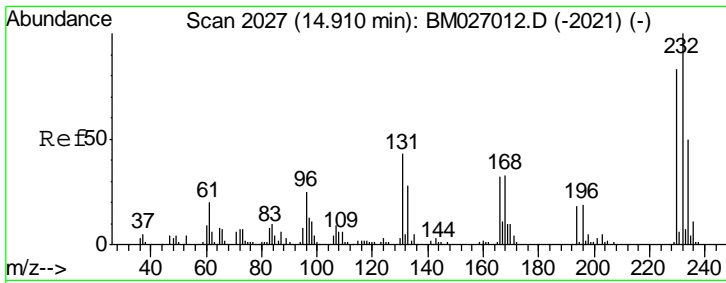
Tgt Ion	Resp	Lower	Upper
168	100		
139	39.3	29.9	44.9



#55
 2,4-Dinitrotoluene
 Concen: 9.271 ng/ul
 RT: 14.64 min Scan# 1981
 Delta R.T. 0.00 min
 Lab File: BM027011.D
 Acq: 06 Aug 2020 19:36

Tgt Ion	Resp	Lower	Upper
165	100		
63	52.6	43.4	65.0
182	3.1	3.0	4.4

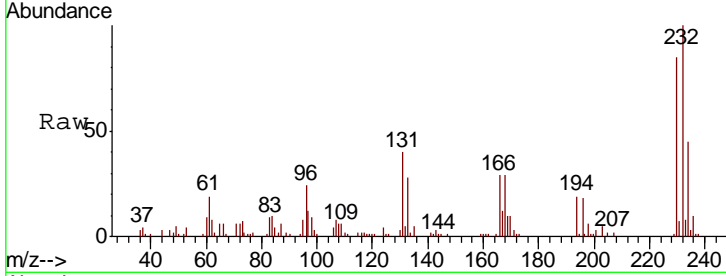




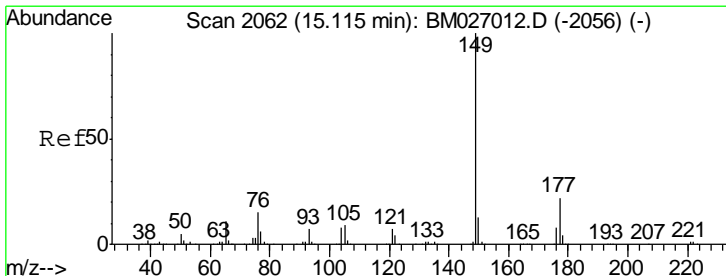
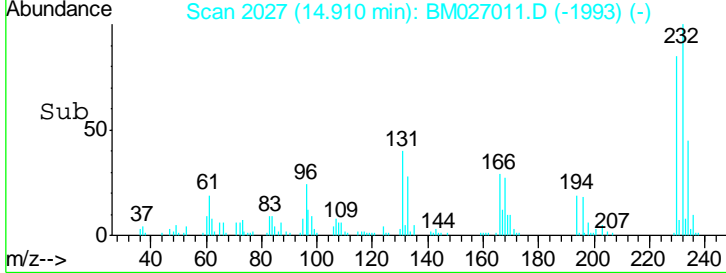
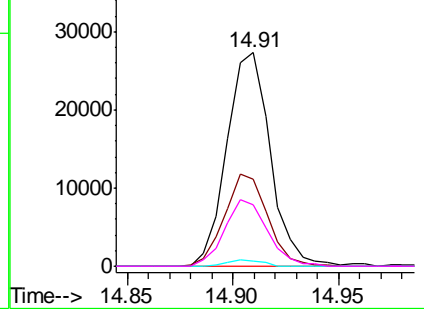
#56
 2,3,4,6-Tetrachlorophenol
 Concen: 8.904 ng/ul
 RT: 14.91 min Scan# 2027
 Delta R.T. 0.00 min
 Lab File: BM027011.D
 Acq: 06 Aug 2020 19:36

Instrument :
 BNA_M
 ClientSampleID :
 SSTD01001

Tgt Ion	Resp	Lower	Upper
232	100		
131	40.5	34.6	52.0
130	2.6	2.2	3.4
166	28.9	25.5	38.3

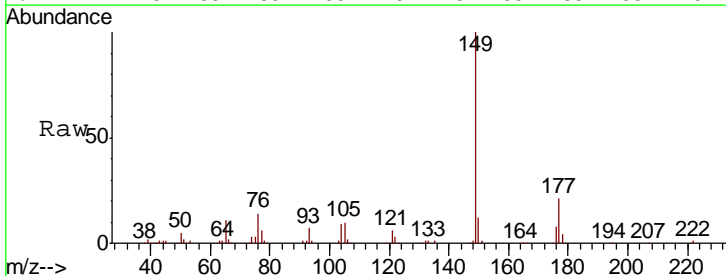


Abundance Ion 232.00 (231.70 to 232.70): E
 Ion 131.00 (130.70 to 131.70): E
 Ion 130.00 (129.70 to 130.70): E
 Ion 166.00 (165.70 to 166.70): E

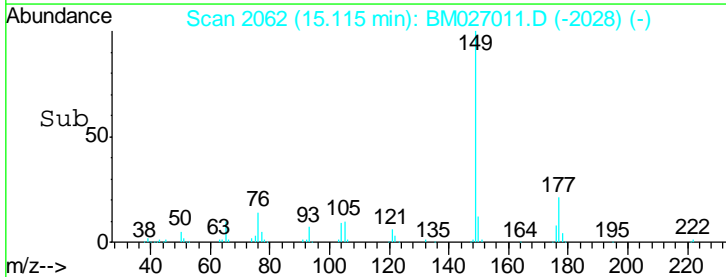
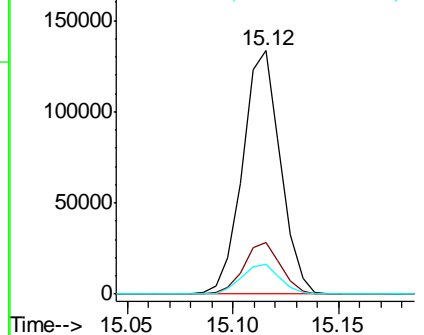


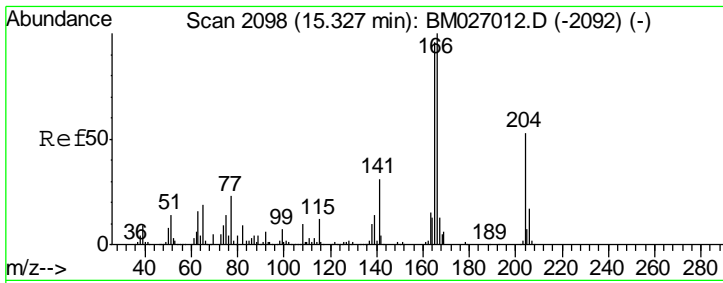
#57
 Diethylphthalate
 Concen: 10.173 ng/ul
 RT: 15.12 min Scan# 2062
 Delta R.T. 0.00 min
 Lab File: BM027011.D
 Acq: 06 Aug 2020 19:36

Tgt Ion	Resp	Lower	Upper
149	100		
177	20.9	17.4	26.2
150	12.5	10.1	15.1



Abundance Ion 149.00 (148.70 to 149.70): E
 Ion 177.00 (176.70 to 177.70): E
 Ion 150.00 (149.70 to 150.70): E

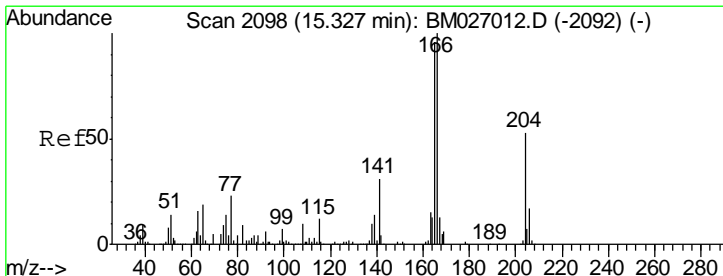
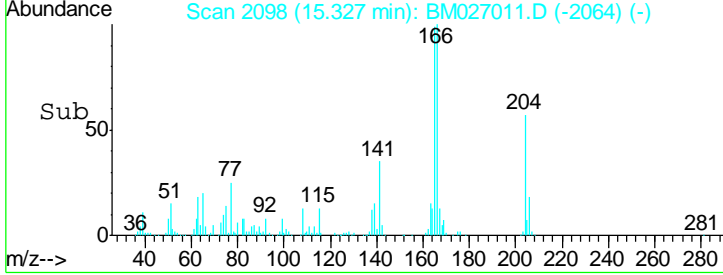
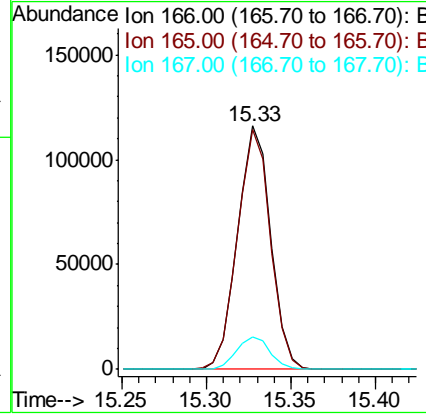
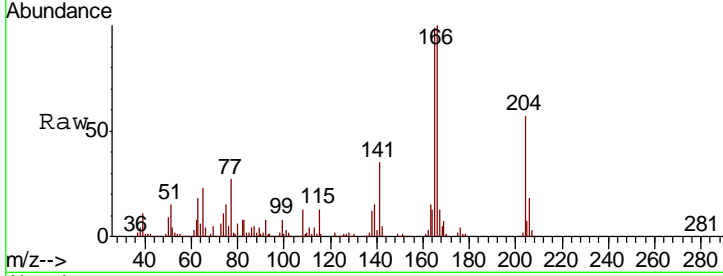




#59
 Fluorene
 Concen: 9.615 ng/ul
 RT: 15.33 min Scan# 2098
 Delta R.T. 0.00 min
 Lab File: BM027011.D
 Acq: 06 Aug 2020 19:36

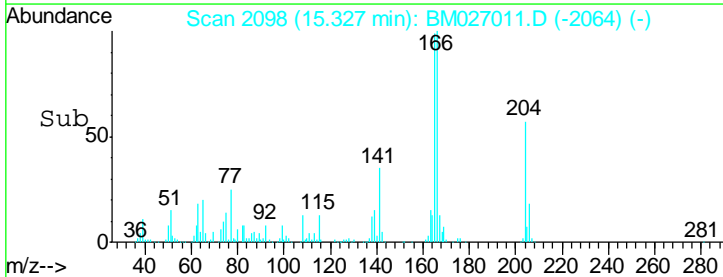
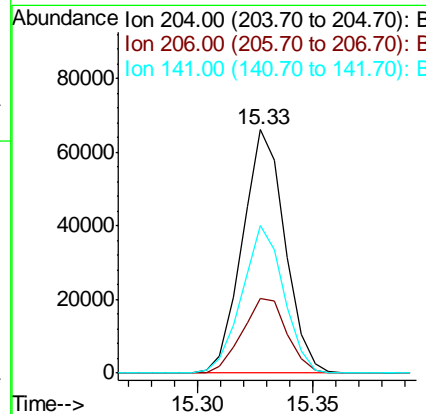
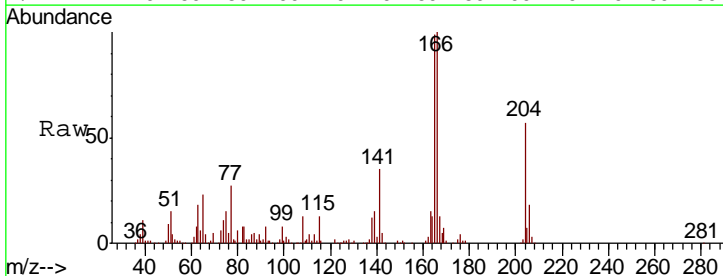
Instrument :
 BNA_M
ClientSampled :
 SSTD01001

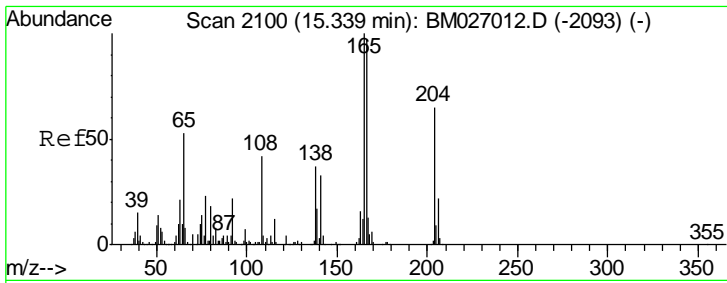
Tgt Ion	Resp	Lower	Upper
166	158448		
165	98.6	76.9	115.3
167	13.4	10.5	15.7



#60
 4-Chlorophenyl-phenylether
 Concen: 9.155 ng/ul
 RT: 15.33 min Scan# 2098
 Delta R.T. 0.00 min
 Lab File: BM027011.D
 Acq: 06 Aug 2020 19:36

Tgt Ion	Resp	Lower	Upper
204	85077		
206	30.8	25.8	38.8
141	60.7	46.7	70.1

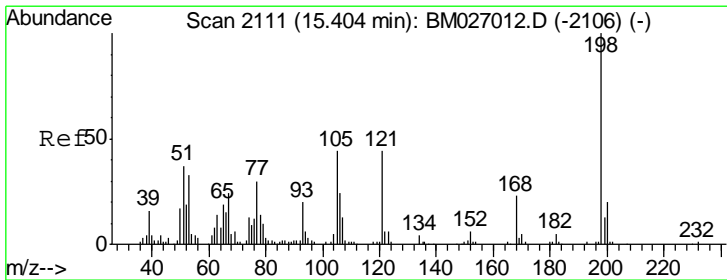
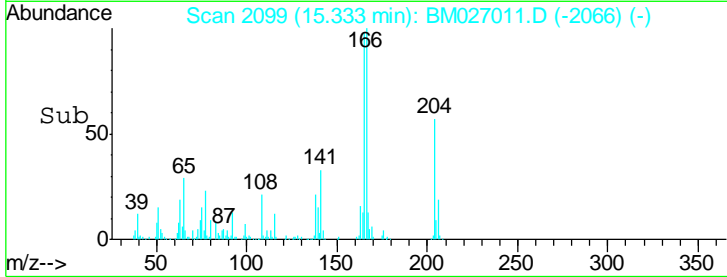
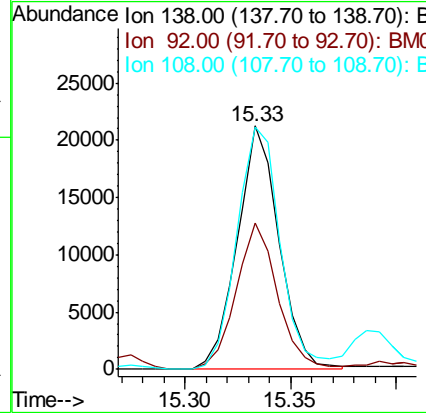
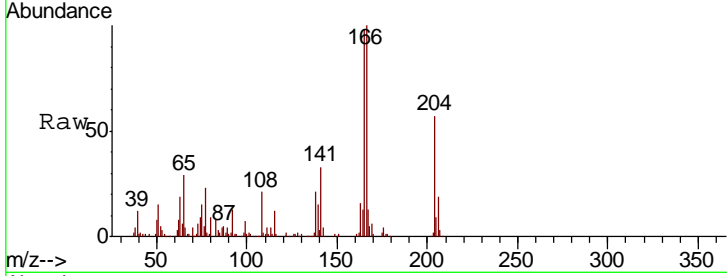




#61
 4-Nitroaniline
 Concen: 8.916 ng/ul
 RT: 15.33 min Scan# 2099
 Delta R.T. -0.01 min
 Lab File: BM027011.D
 Acq: 06 Aug 2020 19:36

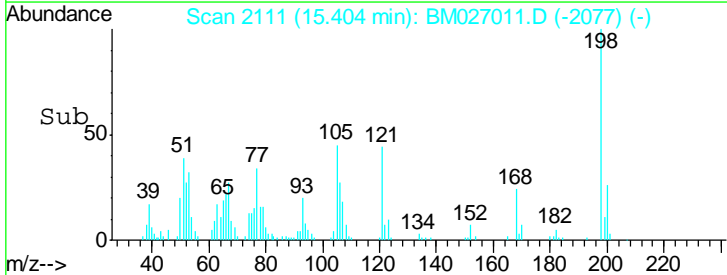
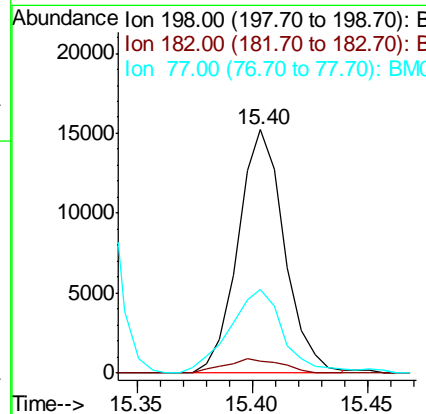
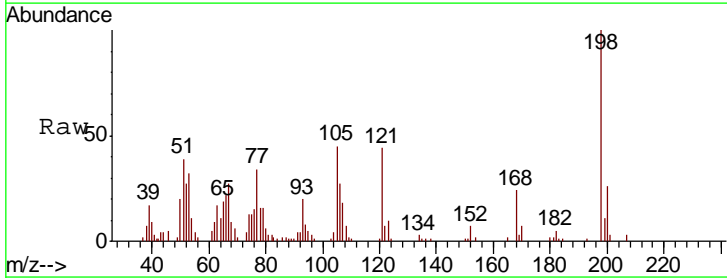
Instrument :
 BNA_M
 ClientSampled :
 SSTD01001

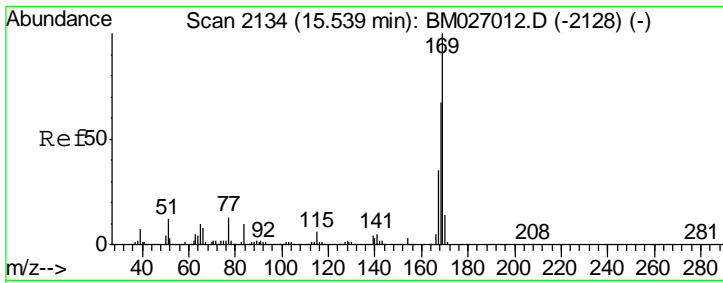
Tgt Ion	Resp	Lower	Upper
138	100		
92	60.3	46.9	70.3
108	99.7	89.0	133.6



#64
 4,6-Dinitro-2-methylphenol
 Concen: 7.697 ng/ul
 RT: 15.40 min Scan# 2111
 Delta R.T. 0.00 min
 Lab File: BM027011.D
 Acq: 06 Aug 2020 19:36

Tgt Ion	Resp	Lower	Upper
198	100		
182	4.8	3.8	5.6
77	34.3	25.3	37.9

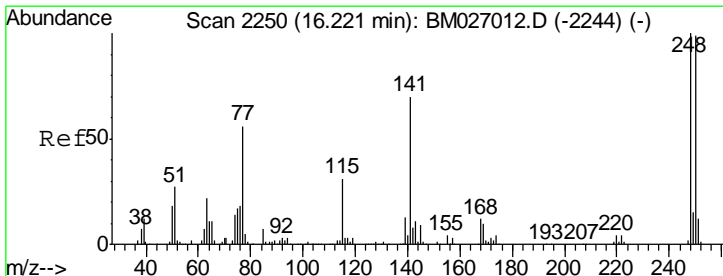
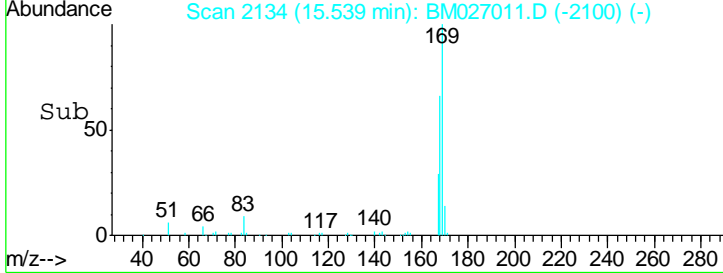
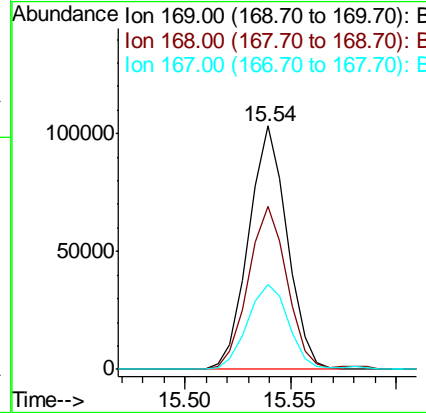
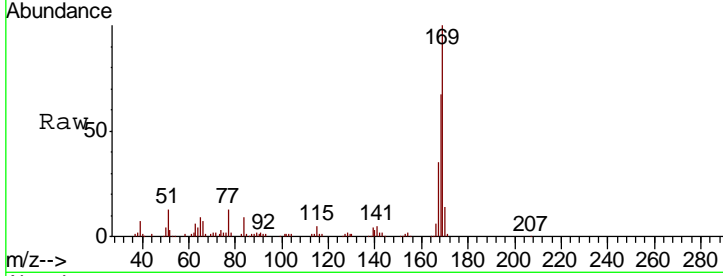




#65
 N-Nitrosodiphenylamine
 Concen: 9.759 ng/ul
 RT: 15.54 min Scan# 2134
 Delta R.T. 0.00 min
 Lab File: BM027011.D
 Acq: 06 Aug 2020 19:36

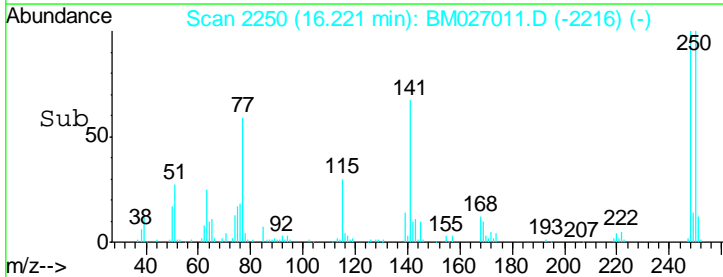
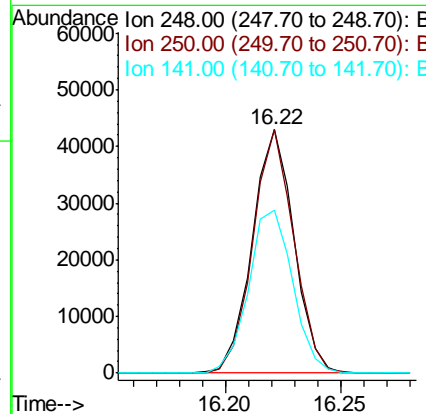
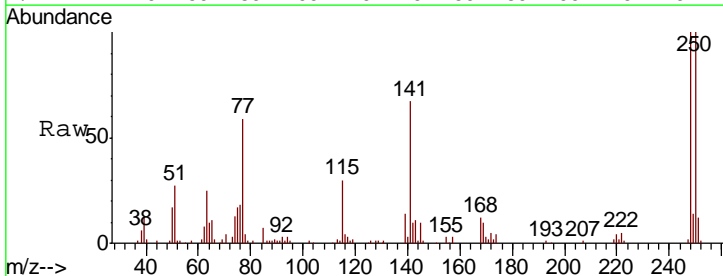
Instrument :
 BNA_M
 ClientSampleID :
 SSTD01001

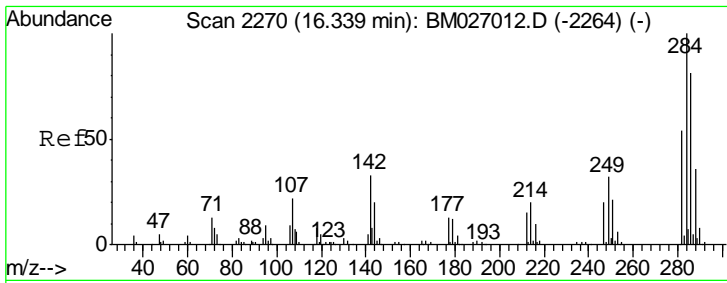
Tgt Ion	Resp	Lower	Upper
169	130750		
168	67.0	53.8	80.8
167	34.7	27.8	41.8



#66
 4-Bromophenyl-phenylether
 Concen: 9.580 ng/ul
 RT: 16.22 min Scan# 2250
 Delta R.T. 0.00 min
 Lab File: BM027011.D
 Acq: 06 Aug 2020 19:36

Tgt Ion	Resp	Lower	Upper
248	54210		
250	100.1	79.4	119.2
141	66.9	56.2	84.4

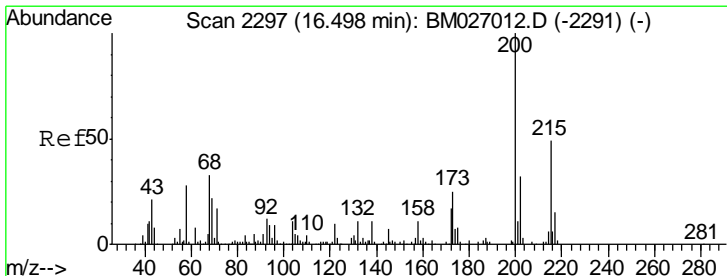
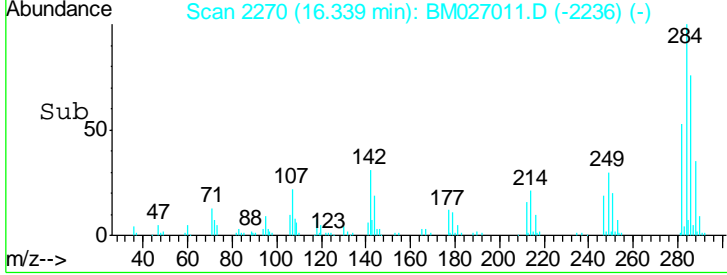
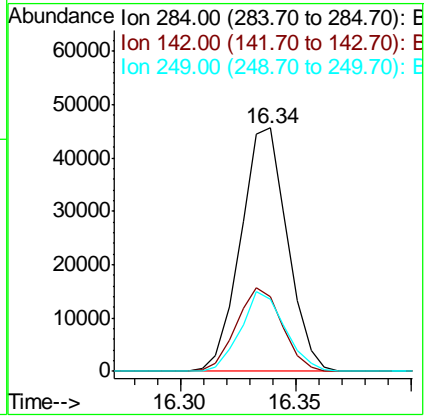
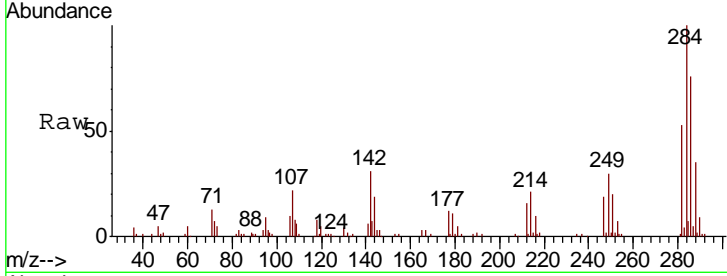




#67
 Hexachlorobenzene
 Concen: 9.805 ng/ul
 RT: 16.34 min Scan# 2270
 Delta R.T. 0.00 min
 Lab File: BM027011.D
 Acq: 06 Aug 2020 19:36

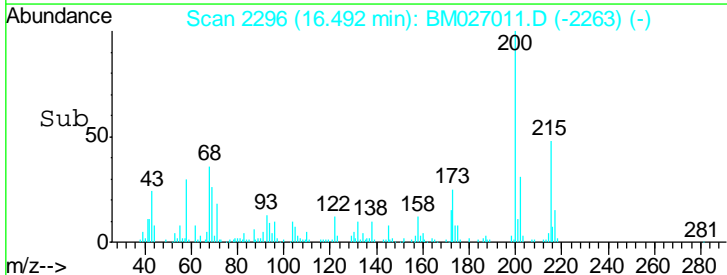
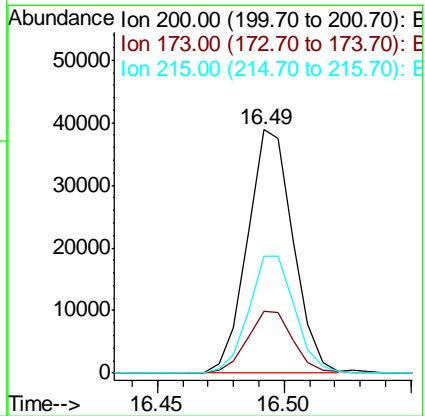
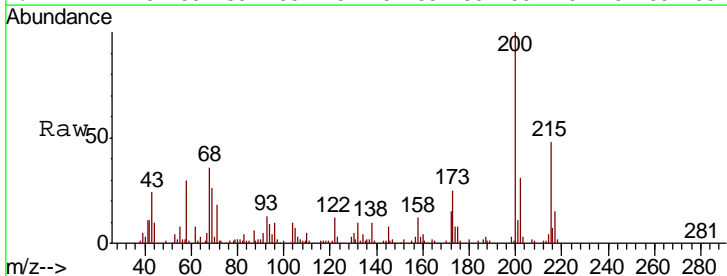
Instrument :
 BNA_M
 ClientSampled :
 SSTD01001

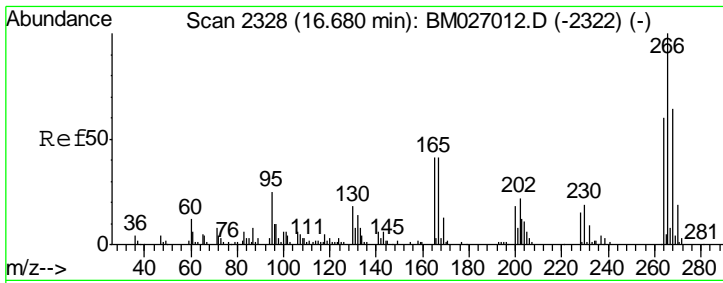
Tgt Ion	Resp	Lower	Upper
284	64176		
142	30.8	26.6	39.8
249	29.7	25.3	37.9



#68
 Atrazine
 Concen: 9.089 ng/ul
 RT: 16.49 min Scan# 2296
 Delta R.T. -0.01 min
 Lab File: BM027011.D
 Acq: 06 Aug 2020 19:36

Tgt Ion	Resp	Lower	Upper
200	48917		
173	25.2	20.3	30.5
215	47.8	38.8	58.2

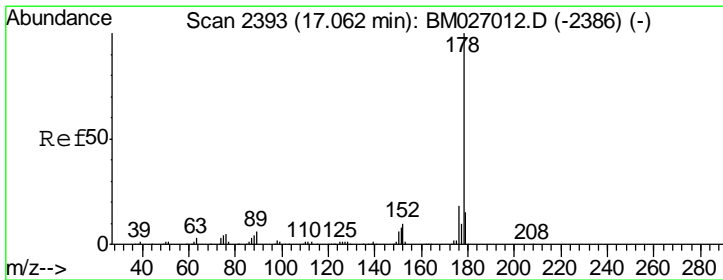
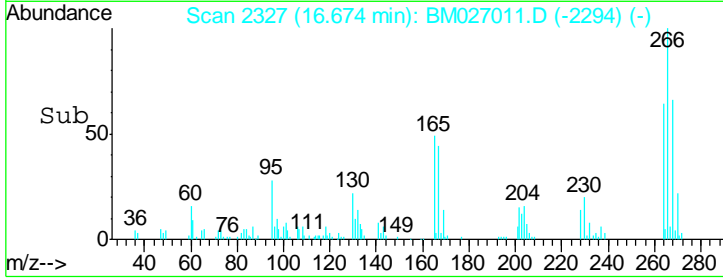
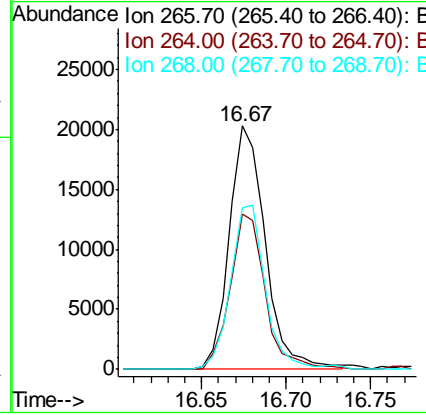
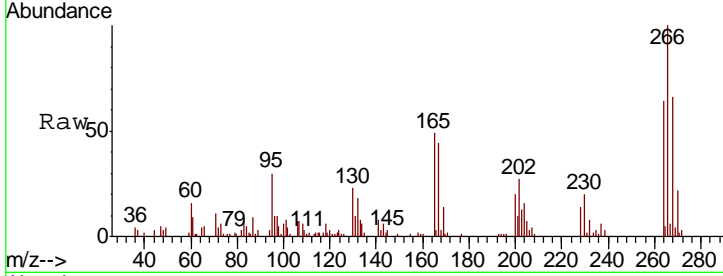




#69
 Pentachlorophenol
 Concen: 8.259 ng/ul
 RT: 16.67 min Scan# 2327
 Delta R.T. -0.01 min
 Lab File: BM027011.D
 Acq: 06 Aug 2020 19:36

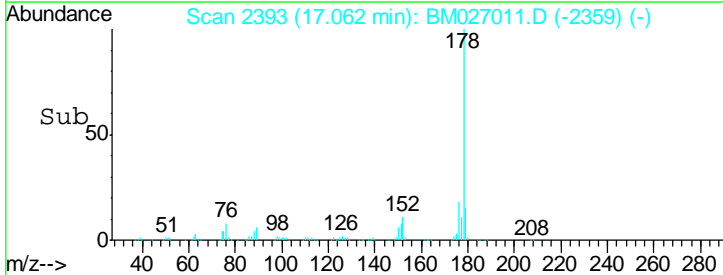
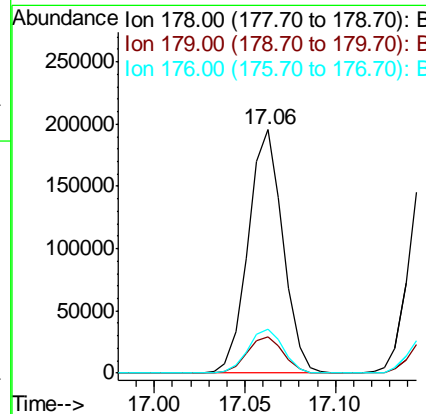
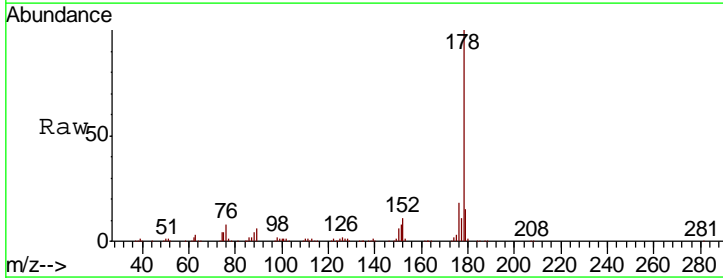
Instrument :
 BNA_M
 ClientSampled :
 SST01001

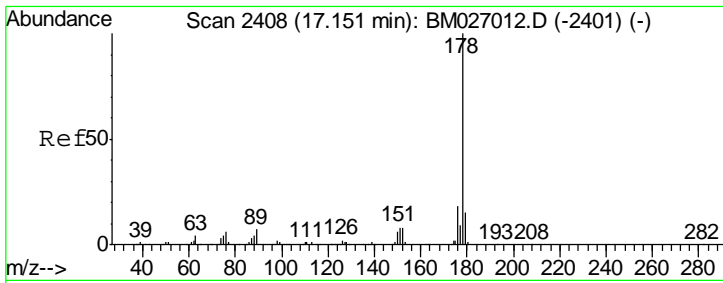
Tgt Ion	Resp	Lower	Upper
266	30188		
264	100	48.1	72.1
268	66.4	51.0	76.6



#70
 Phenanthrene
 Concen: 10.072 ng/ul
 RT: 17.06 min Scan# 2393
 Delta R.T. 0.00 min
 Lab File: BM027011.D
 Acq: 06 Aug 2020 19:36

Tgt Ion	Resp	Lower	Upper
178	259750		
179	100	11.9	17.9
176	18.1	14.6	22.0

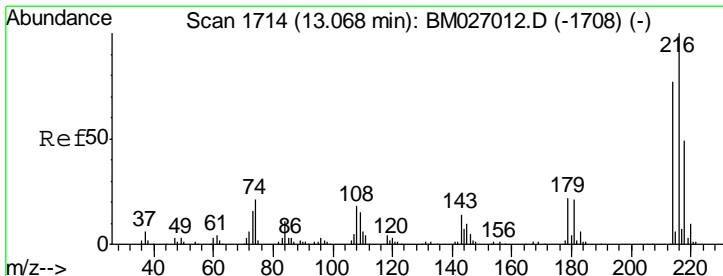
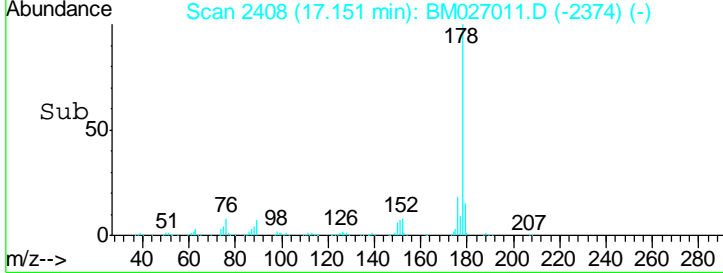
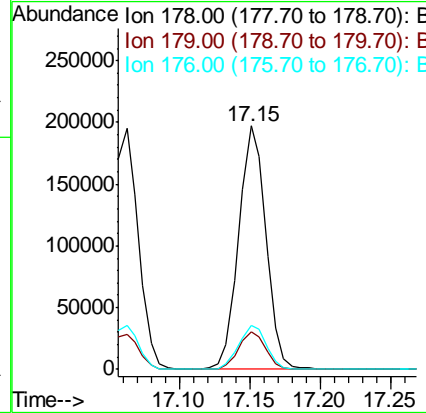
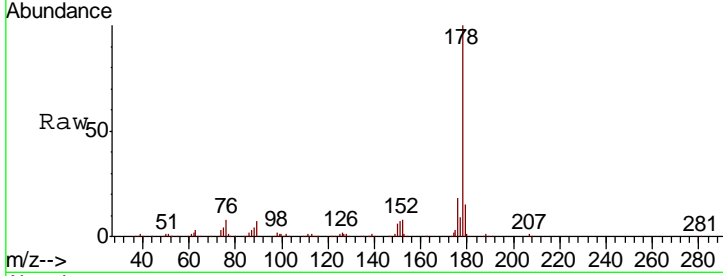




#72
 Anthracene
 Concen: 9.876 ng/ul
 RT: 17.15 min Scan# 2408
 Delta R.T. 0.00 min
 Lab File: BM027011.D
 Acq: 06 Aug 2020 19:36

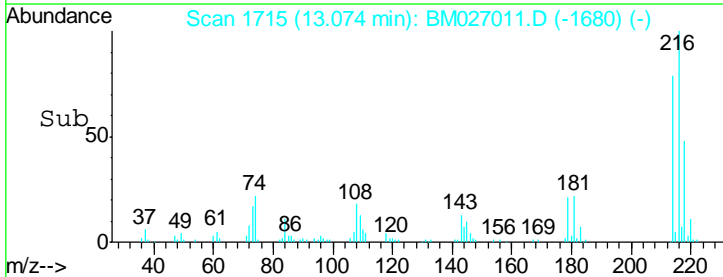
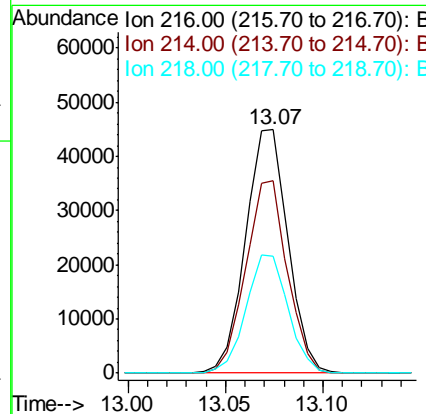
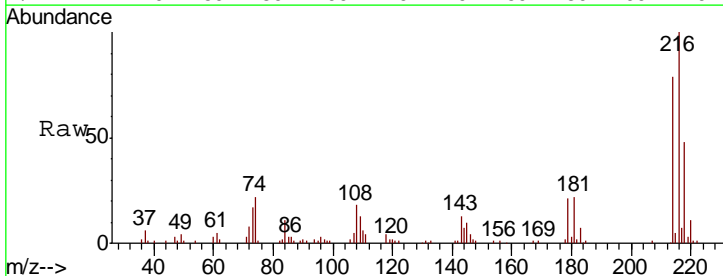
Instrument :
 BNA_M
 ClientSampled :
 SSTD01001

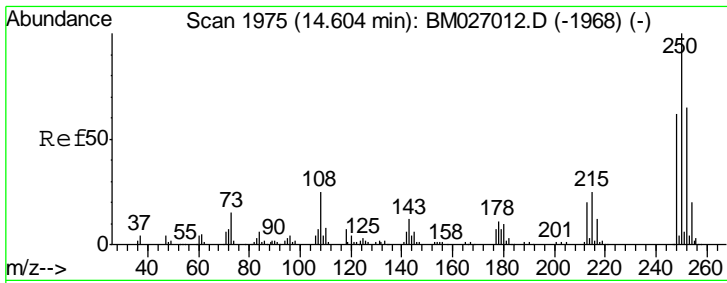
Tgt Ion	Resp	Lower	Upper
178	265724		
179	15.4	12.0	18.0
176	18.0	14.3	21.5



#73
 1,2,3,4-Tetrachlorobenzene
 Concen: 9.855 ng/uL
 RT: 13.07 min Scan# 1715
 Delta R.T. 0.01 min
 Lab File: BM027011.D
 Acq: 06 Aug 2020 19:36

Tgt Ion	Resp	Lower	Upper
216	67517		
214	78.9	61.8	92.6
218	47.9	39.0	58.4

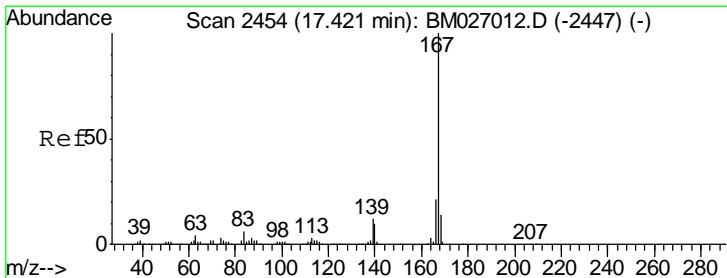
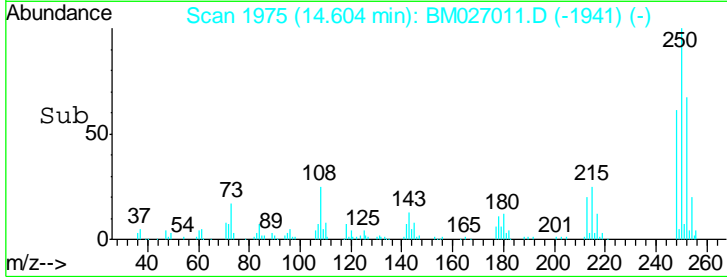
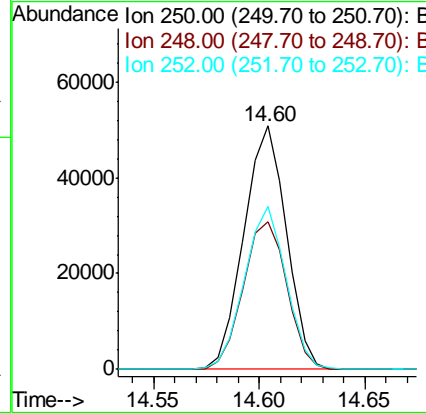
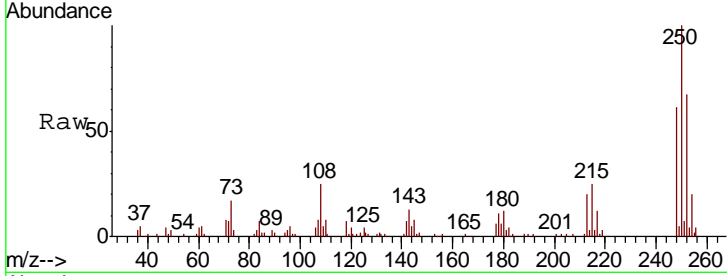




#74
 Pentachlorobenzene
 Concen: 9.825 ng/uL
 RT: 14.60 min Scan# 1975
 Delta R.T. 0.00 min
 Lab File: BM027011.D
 Acq: 06 Aug 2020 19:36

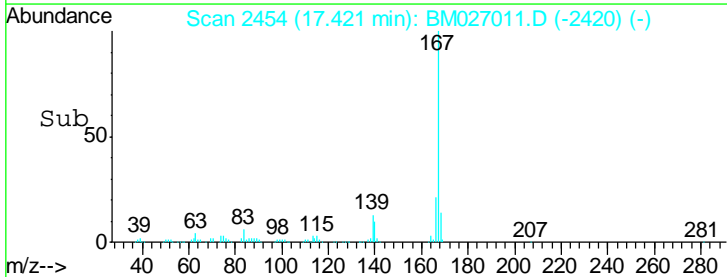
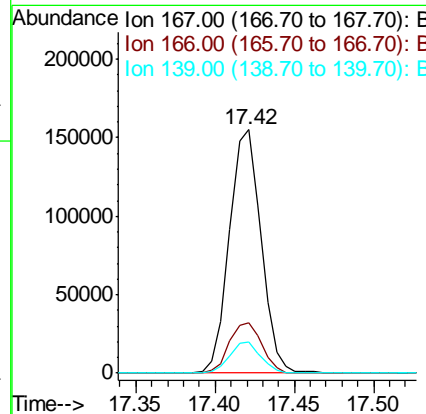
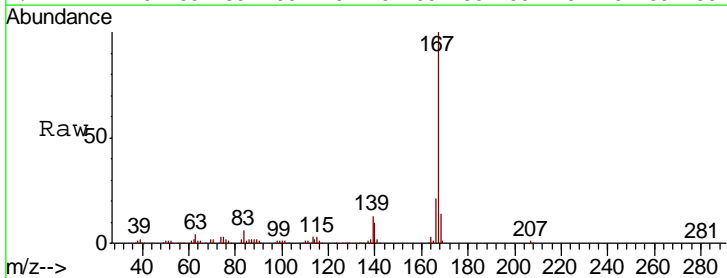
Instrument :
 BNA_M
 ClientSampled :
 SSTD01001

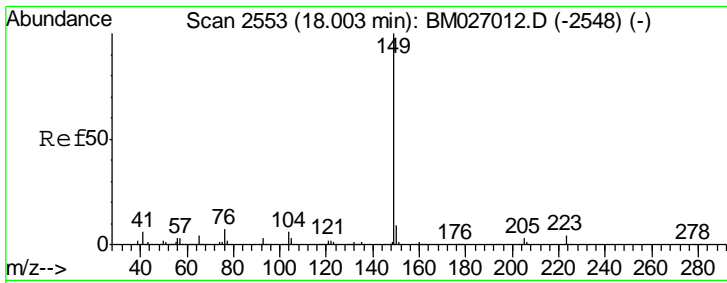
Tgt Ion	Resp	Lower	Upper
250	71076		
248	60.6	49.5	74.3
252	66.9	52.1	78.1



#75
 Carbazole
 Concen: 9.410 ng/ul
 RT: 17.42 min Scan# 2454
 Delta R.T. 0.00 min
 Lab File: BM027011.D
 Acq: 06 Aug 2020 19:36

Tgt Ion	Resp	Lower	Upper
167	215598		
166	20.9	17.0	25.6
139	12.9	9.8	14.6

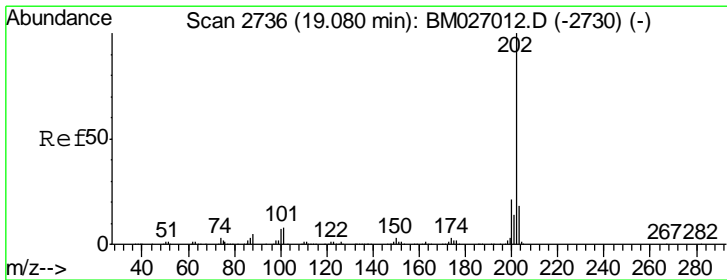
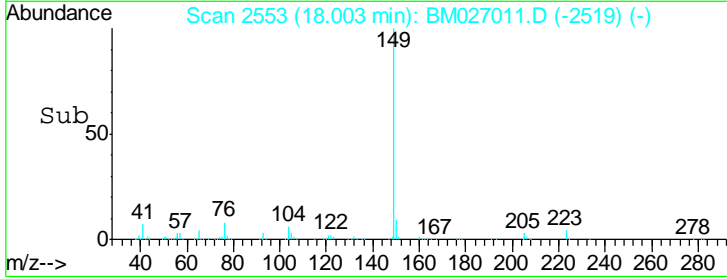
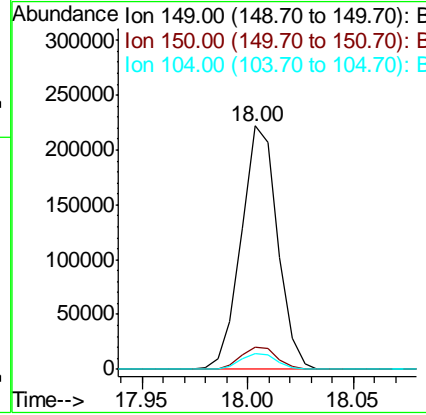
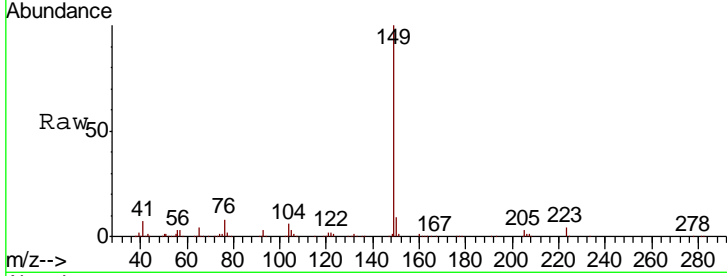




#76
 Di-n-butylphthalate
 Concen: 9.635 ng/ul
 RT: 18.00 min Scan# 2553
 Delta R.T. 0.00 min
 Lab File: BM027011.D
 Acq: 06 Aug 2020 19:36

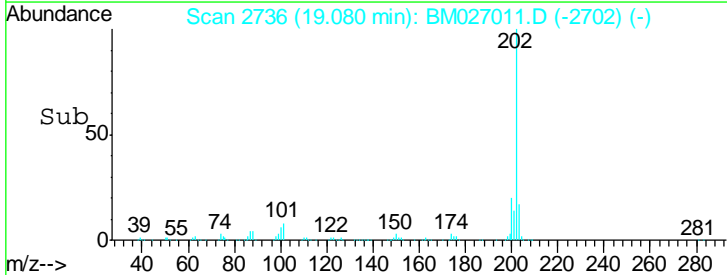
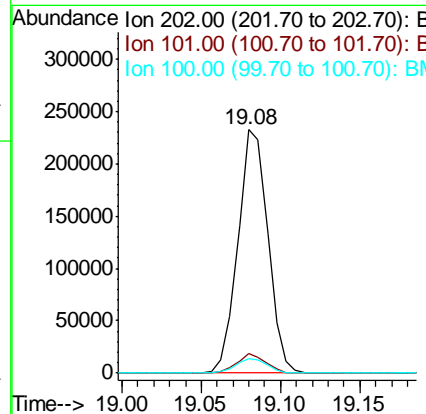
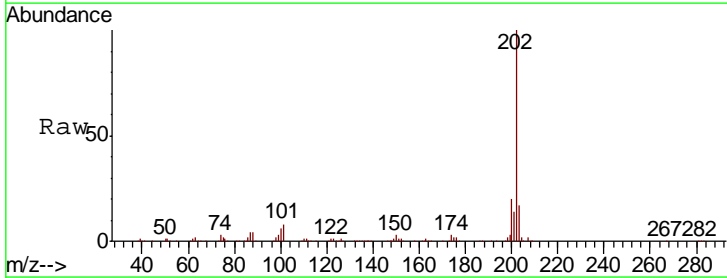
Instrument :
 BNA_M
 ClientSampled :
 SST01001

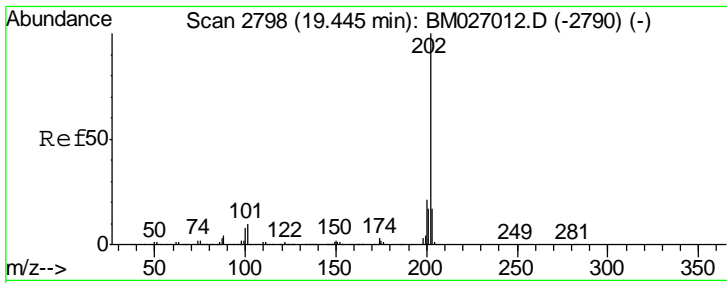
Tgt Ion	Resp	Lower	Upper
149	263133		
150	9.2	7.4	11.0
104	6.3	5.0	7.6



#77
 Fluoranthene
 Concen: 9.260 ng/ul
 RT: 19.08 min Scan# 2736
 Delta R.T. 0.00 min
 Lab File: BM027011.D
 Acq: 06 Aug 2020 19:36

Tgt Ion	Resp	Lower	Upper
202	306176		
101	7.9	6.7	10.1
100	6.2	5.4	8.2

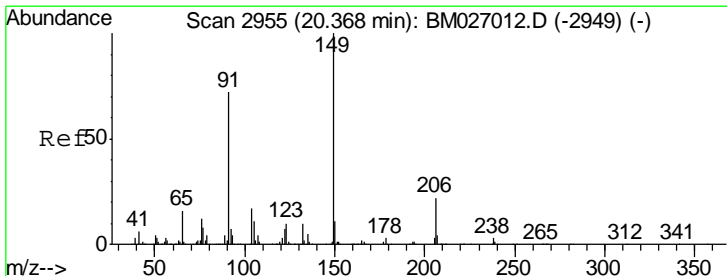
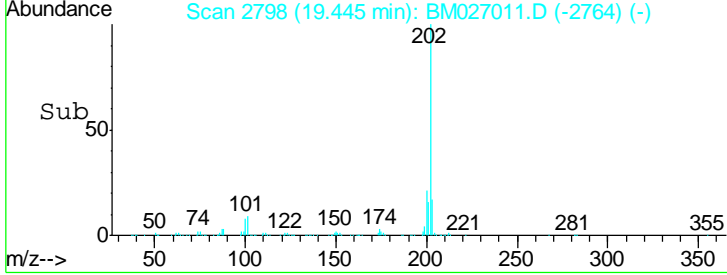
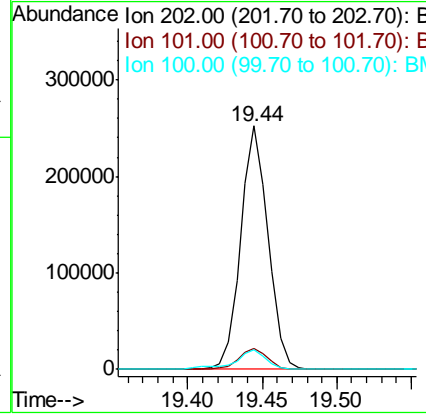
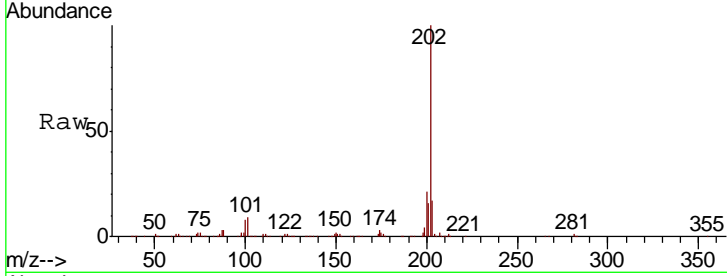




#80
 Pyrene
 Concen: 10.121 ng/ul
 RT: 19.44 min Scan# 2798
 Delta R.T. 0.00 min
 Lab File: BM027011.D
 Acq: 06 Aug 2020 19:36

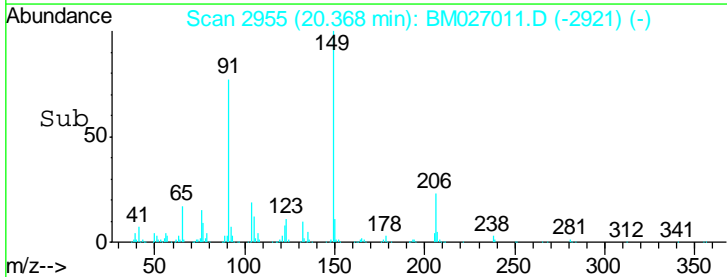
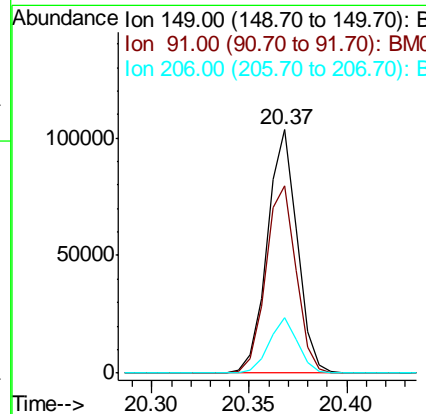
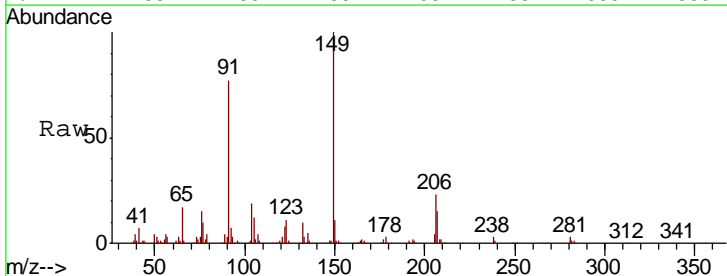
Instrument :
 BNA_M
 ClientSampled :
 SST01001

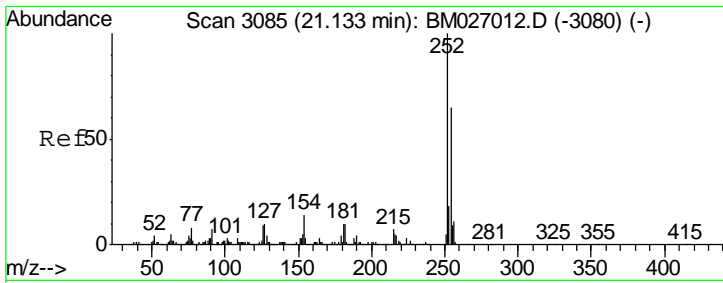
Tgt Ion	Resp	Lower	Upper
202	321058		
101	8.6	7.6	11.4
100	7.8	6.3	9.5



#81
 Butylbenzylphthalate
 Concen: 9.576 ng/ul
 RT: 20.37 min Scan# 2955
 Delta R.T. 0.00 min
 Lab File: BM027011.D
 Acq: 06 Aug 2020 19:36

Tgt Ion	Resp	Lower	Upper
149	109401		
91	76.9	57.4	86.2
206	23.0	17.4	26.2

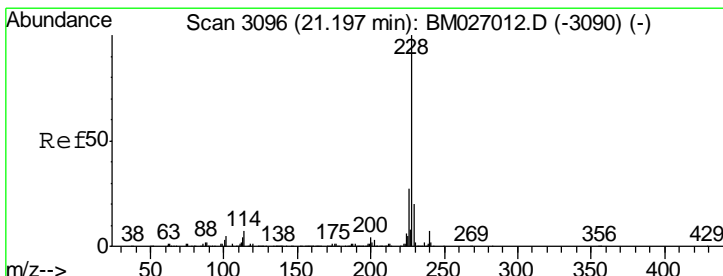
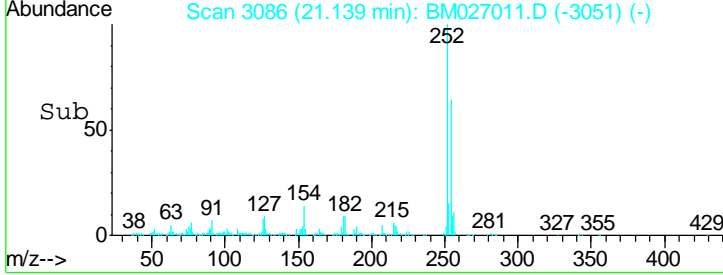
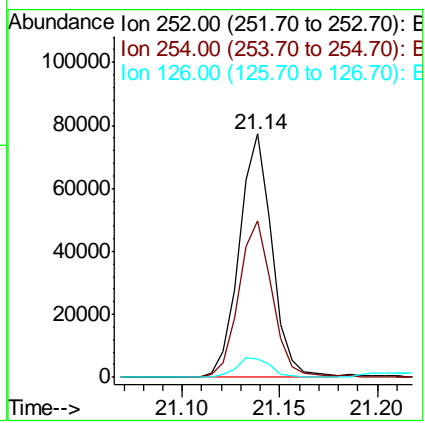
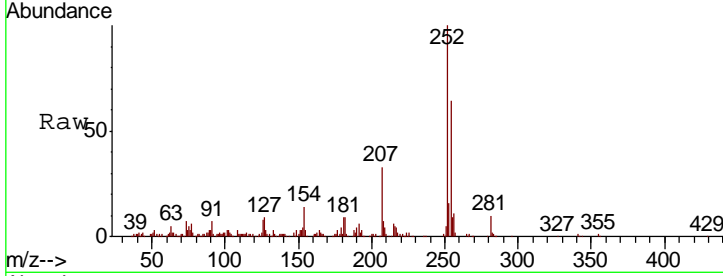




#82
 3,3'-Dichlorobenzidine
 Concen: 8.381 ng/ul
 RT: 21.14 min Scan# 3086
 Delta R.T. 0.01 min
 Lab File: BM027011.D
 Acq: 06 Aug 2020 19:36

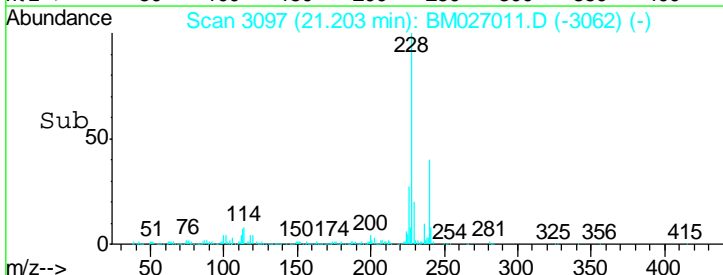
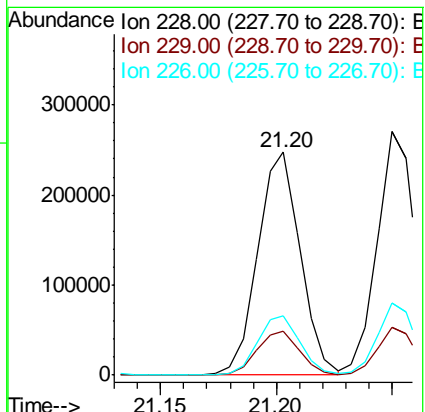
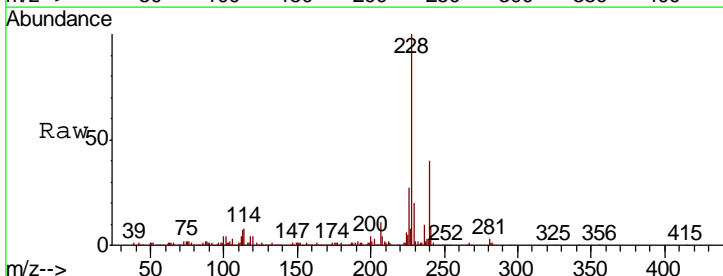
Instrument :
 BNA_M
 ClientSampled :
 SSTD01001

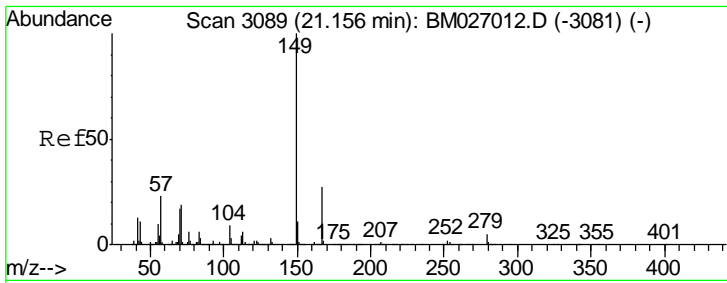
Tgt Ion	Resp	Lower	Upper
252	90177		
254	64.2	52.3	78.5
126	7.8	7.3	10.9



#83
 Benzo(a)anthracene
 Concen: 9.738 ng/ul
 RT: 21.20 min Scan# 3097
 Delta R.T. 0.01 min
 Lab File: BM027011.D
 Acq: 06 Aug 2020 19:36

Tgt Ion	Resp	Lower	Upper
228	316103		
229	20.0	15.8	23.6
226	26.7	21.2	31.8

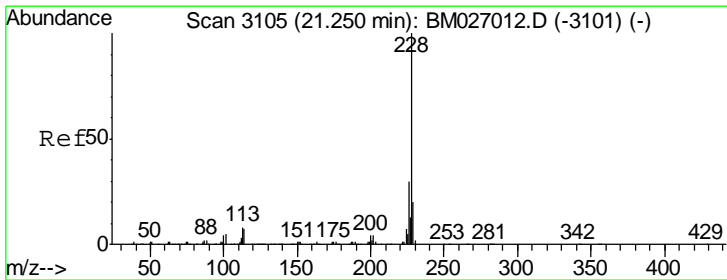
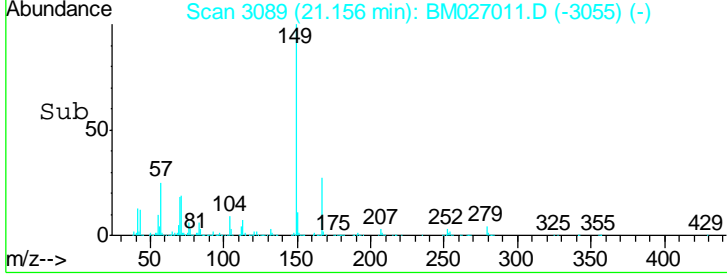
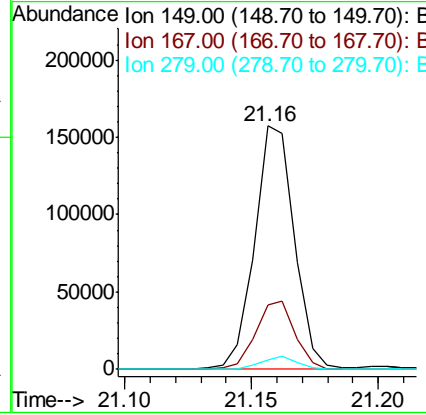
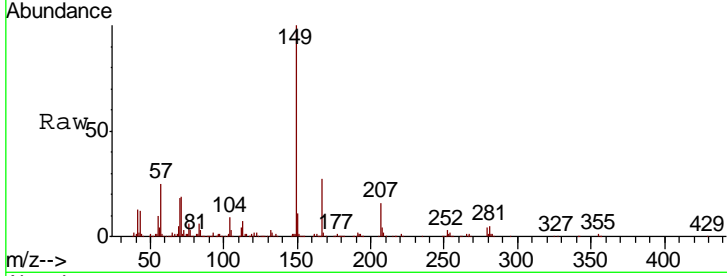




#84
 Bis(2-ethylhexyl)phthalate
 Concen: 9.868 ng/ul
 RT: 21.16 min Scan# 3089
 Delta R.T. 0.00 min
 Lab File: BM027011.D
 Acq: 06 Aug 2020 19:36

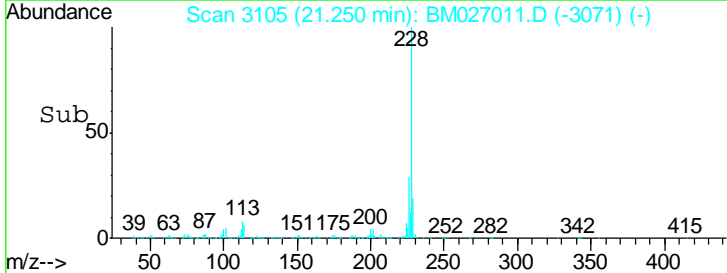
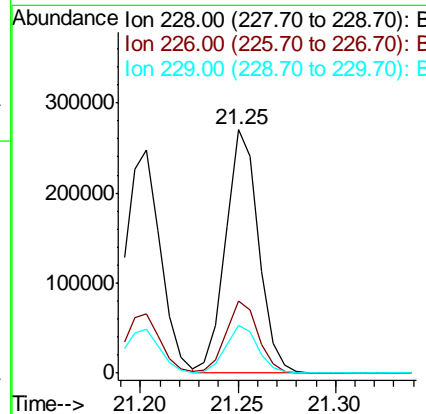
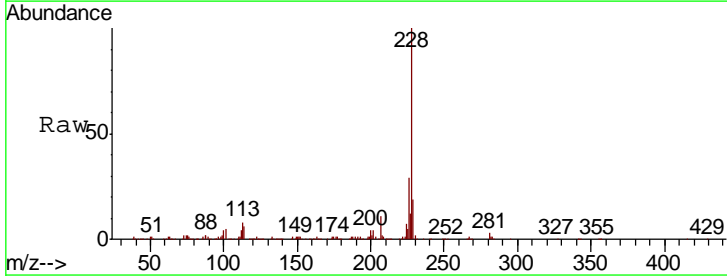
Instrument :
 BNA_M
 ClientSampled :
 SSTD01001

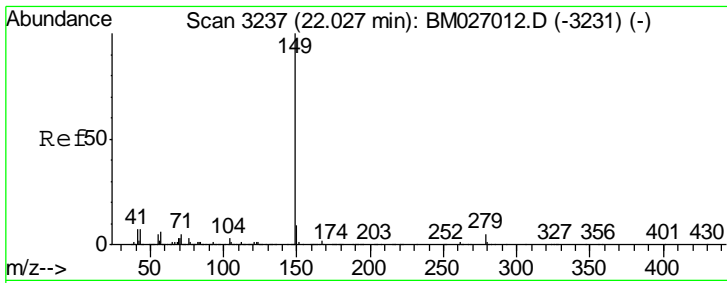
Tgt Ion	Resp	Lower	Upper
149	171045		
167	26.6	21.6	32.4
279	4.0	3.9	5.9



#85
 Chrysene
 Concen: 9.943 ng/ul
 RT: 21.25 min Scan# 3105
 Delta R.T. 0.00 min
 Lab File: BM027011.D
 Acq: 06 Aug 2020 19:36

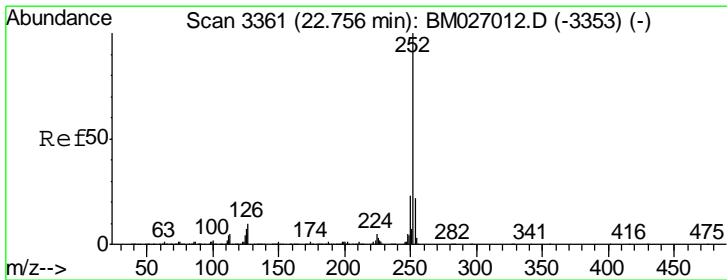
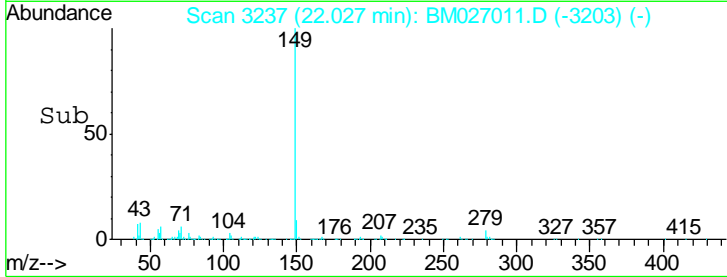
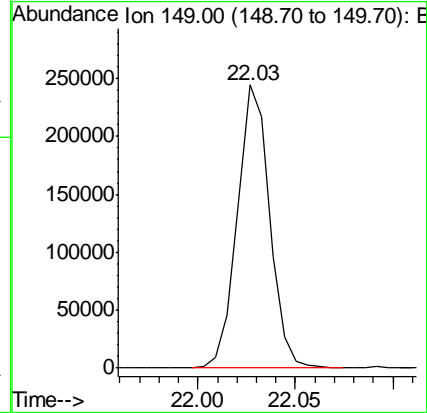
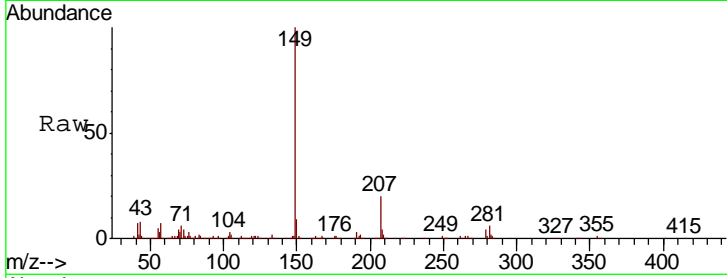
Tgt Ion	Resp	Lower	Upper
228	315362		
226	29.4	23.8	35.6
229	19.4	15.8	23.8





#87
 Di-n-octyl phthalate
 Concen: 8.189 ng/ul
 RT: 22.03 min Scan# 3237
 Delta R.T. 0.00 min
 Lab File: BM027011.D
 Acq: 06 Aug 2020 19:36
 Tgt Ion:149 Resp: 278816

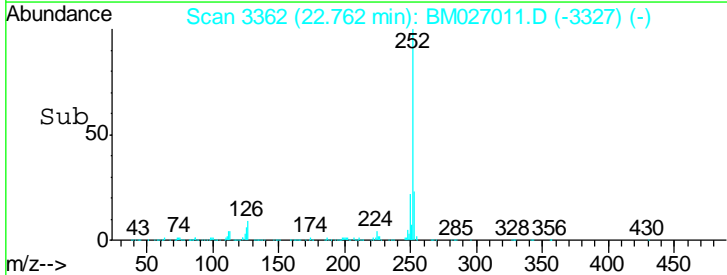
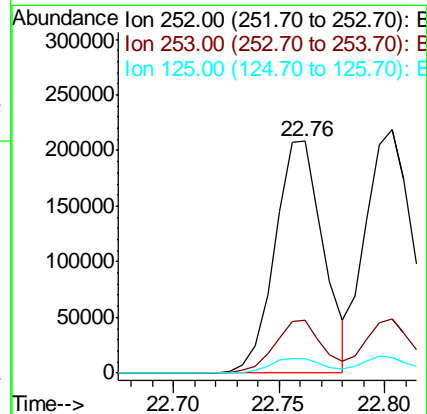
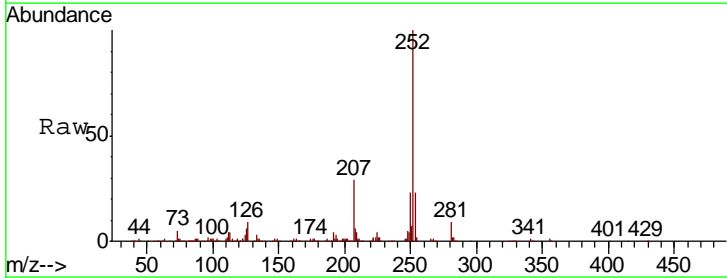
Instrument :
 BNA_M
 ClientSampleID :
 SSTD01001

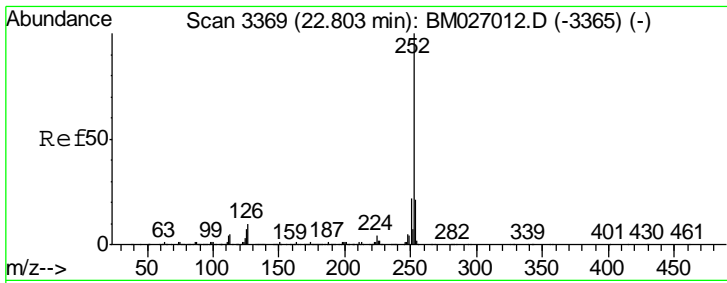


#88
 Benzo(b)fluoranthene
 Concen: 9.496 ng/ul
 RT: 22.76 min Scan# 3362
 Delta R.T. 0.01 min
 Lab File: BM027011.D
 Acq: 06 Aug 2020 19:36

Tgt Ion:252 Resp: 332902

Ion	Ratio	Lower	Upper
252	100		
253	22.6	17.6	26.4
125	6.1	6.0	9.0

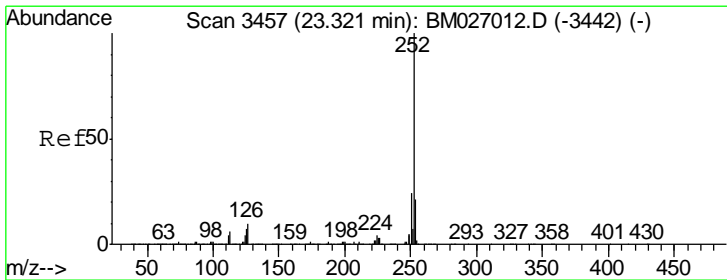
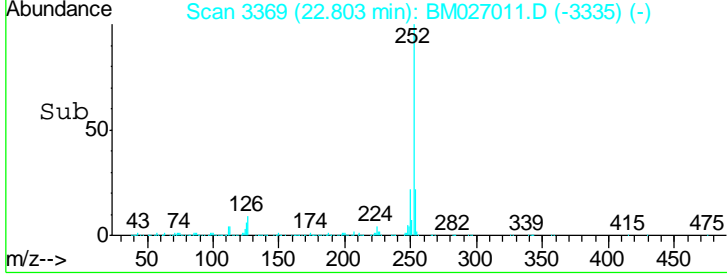
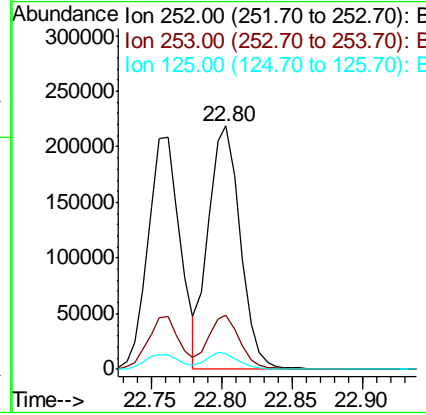
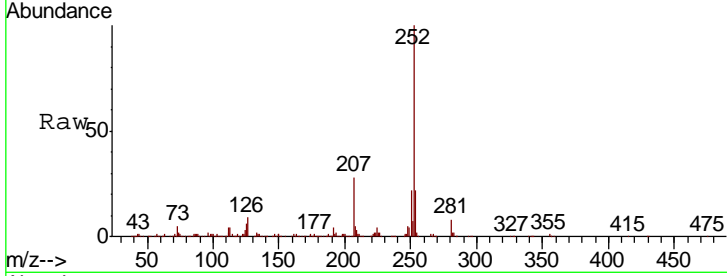




#89
 Benzo(k)fluoranthene
 Concen: 9.878 ng/ul
 RT: 22.80 min Scan# 3369
 Delta R.T. 0.00 min
 Lab File: BM027011.D
 Acq: 06 Aug 2020 19:36

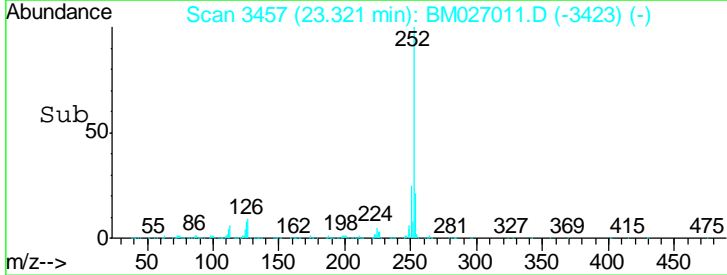
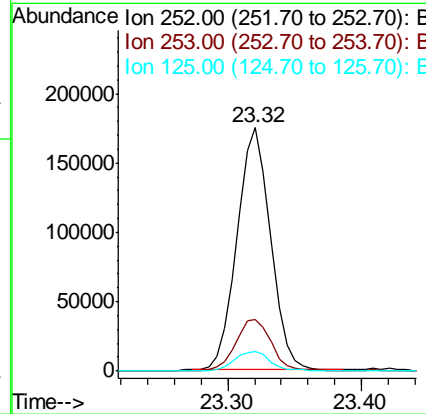
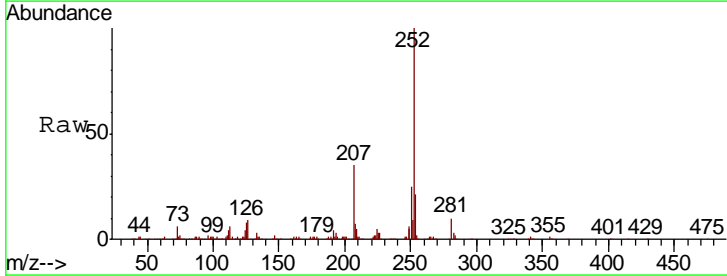
Instrument :
 BNA_M
 ClientSampled :
 SSTD01001

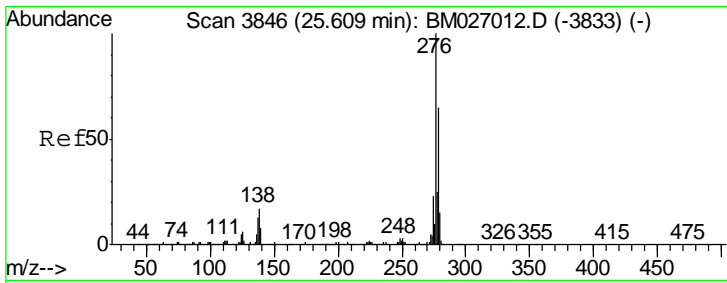
Tgt Ion	Resp	Lower	Upper
252	342544		
253	22.0	17.2	25.8
125	6.3	5.5	8.3



#91
 Benzo(a)pyrene
 Concen: 9.445 ng/ul
 RT: 23.32 min Scan# 3457
 Delta R.T. 0.00 min
 Lab File: BM027011.D
 Acq: 06 Aug 2020 19:36

Tgt Ion	Resp	Lower	Upper
252	303458		
253	21.2	17.0	25.4
125	7.8	5.8	8.8

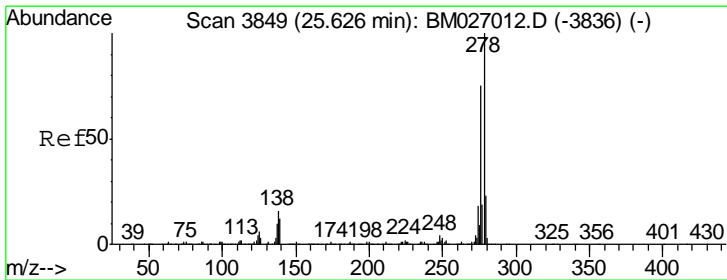
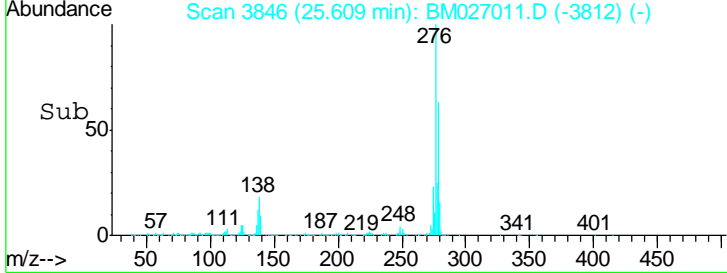
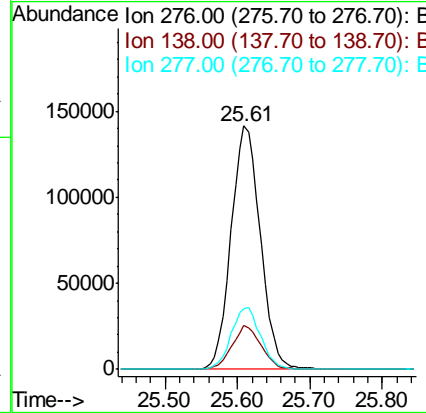
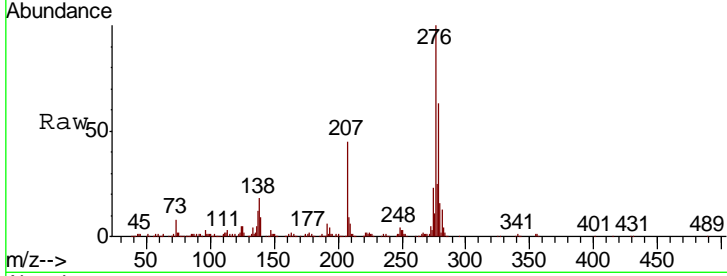




#92
 Indeno(1,2,3-cd)pyrene
 Concen: 9.829 ng/ul
 RT: 25.61 min Scan# 3846
 Delta R.T. 0.00 min
 Lab File: BM027011.D
 Acq: 06 Aug 2020 19:36

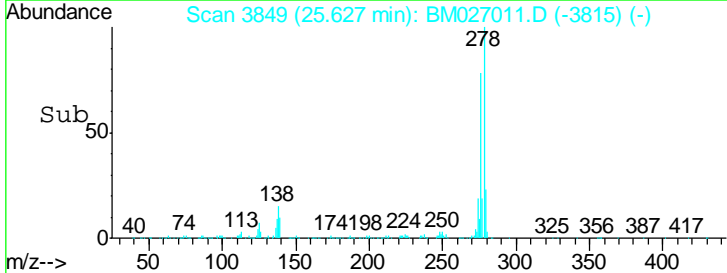
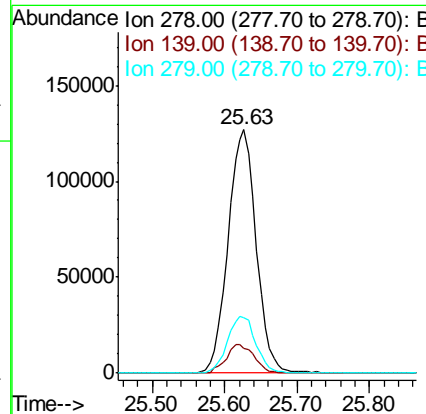
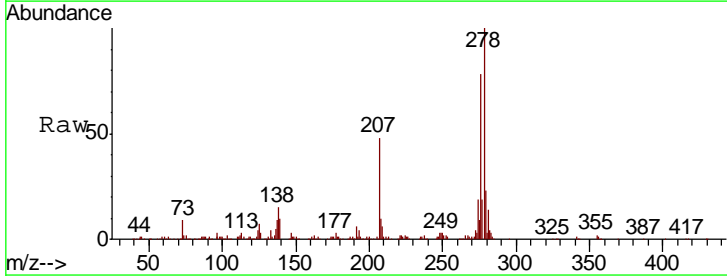
Instrument :
 BNA_M
 ClientSampled :
 SSTD01001

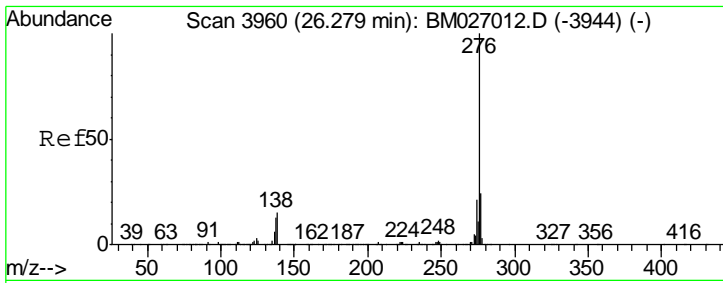
Tgt Ion	Resp	Lower	Upper
276	397116		
138	18.0	13.9	20.9
277	24.9	19.8	29.8



#93
 Dibenzo(a,h)anthracene
 Concen: 9.990 ng/ul
 RT: 25.63 min Scan# 3849
 Delta R.T. 0.00 min
 Lab File: BM027011.D
 Acq: 06 Aug 2020 19:36

Tgt Ion	Resp	Lower	Upper
278	341590		
139	10.4	9.4	14.0
279	22.7	18.7	28.1





#94
 Benzo(a,h,i)perylene
 Concen: 9.866 ng/ul
 RT: 26.28 min Scan# 3960
 Delta R.T. 0.00 min
 Lab File: BM027011.D
 Acq: 06 Aug 2020 19:36

Instrument :
 BNA_M
 ClientSampleId :
 SSTD01001

Tot Ion: 276 Resp: 329015

Ion	Ratio	Lower	Upper
276	100		
138	14.4	12.3	18.5
277	23.8	19.0	28.6

