

Data Path : Z:\HPCHEM1\BNA M\DATA\BM080917\  
 Data File : BM011178.D  
 Acq On : 09 Aug 2017 17:20  
 Operator : SJ/JU  
 Sample : I4625-06  
 Misc :  
 ALS Vial : 7 Sample Multiplier: 1

Instrument :  
 BNA\_M  
 ClientSampleId :  
 CLINTON-AVE-COMP-2

Quant Time: Aug 09 18:12:20 2017  
 Quant Method : Z:\HPCHEM1\BNA M\METHODS\8270-BM072617.M  
 Quant Title : ASP BNA STANDARDS FOR 5 POINT CALIBRATION  
 QLast Update : Wed Jul 26 17:29:06 2017  
 Response via : Initial Calibration

Internal Standards	R.T.	QIon	Response	Conc	Units	Dev(Min)
1) 1,4-Dichlorobenzene-d4	7.29	152	140051	20.00	ng	-0.10
21) Naphthalene-d8	10.06	136	475604	20.00	ng	-0.09
38) Acenaphthene-d10	13.96	164	304605	20.00	ng	-0.09
63) Phenanthrene-d10	16.72	188	761936	20.00	ng	-0.09
75) Chrysene-d12	20.94	240	1028739	20.00	ng	-0.08
86) Perylene-d12	23.03	264	702530	20.00	ng	-0.11
System Monitoring Compounds						
5) 2-Fluorophenol	4.94	112	1178307	142.22	ng	-0.09
7) Phenol-d6	6.50	99	1479869	125.72	ng	-0.09
23) Nitrobenzene-d5	8.45	82	1500913	118.44	ng	-0.09
41) 2,4,6-Tribromophenol	15.47	330	739023	151.37	ng	-0.09
44) 2-Fluorobiphenyl	12.57	172	2500731	102.96	ng	-0.09
78) Terphenyl-d14	19.39	244	4573911	88.07	ng	-0.08

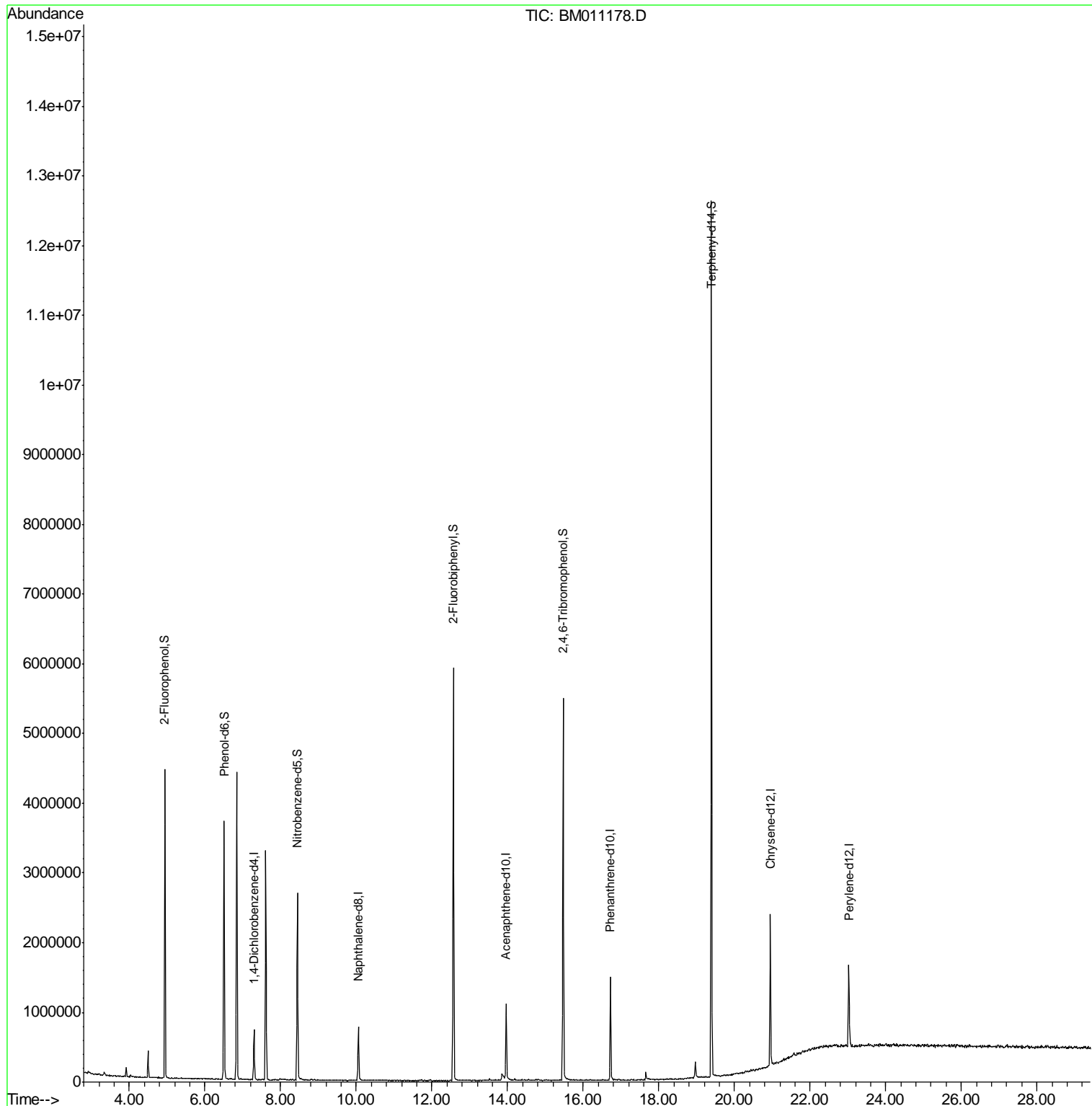
Target Compounds Qvalue

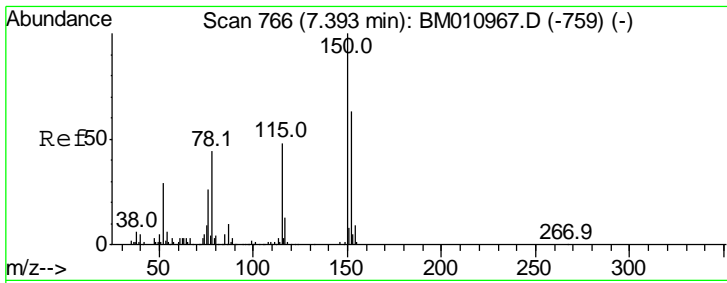
(#) = qualifier out of range (m) = manual integration (+) = signals summed

Data Path : Z:\HPCHEM1\BNA M\DATA\BM080917\  
 Data File : BM011178.D  
 Acq On : 09 Aug 2017 17:20  
 Operator : SJ/JU  
 Sample : I4625-06  
 Misc :  
 ALS Vial : 7 Sample Multiplier: 1

**Instrument :**  
 BNA\_M  
**ClientSampleId :**  
 CLINTON-AVE-COMP-2

Quant Time: Aug 09 18:12:20 2017  
 Quant Method : Z:\HPCHEM1\BNA M\METHODS\8270-BM072617.M  
 Quant Title : ASP BNA STANDARDS FOR 5 POINT CALIBRATION  
 QLast Update : Wed Jul 26 17:29:06 2017  
 Response via : Initial Calibration

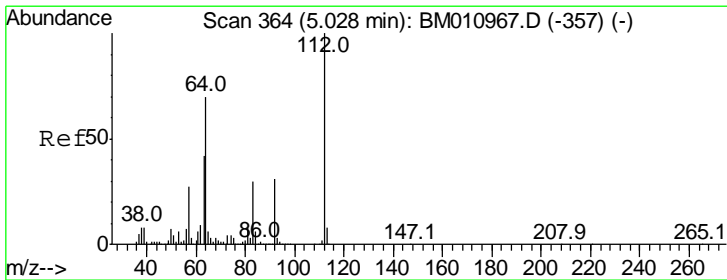
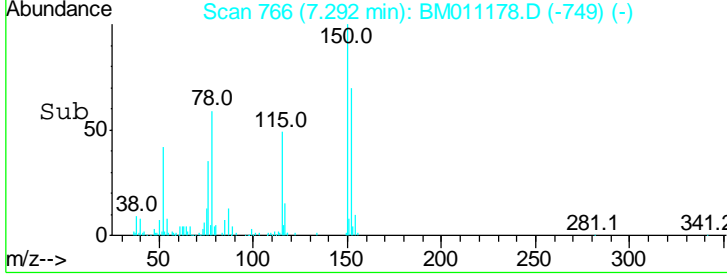
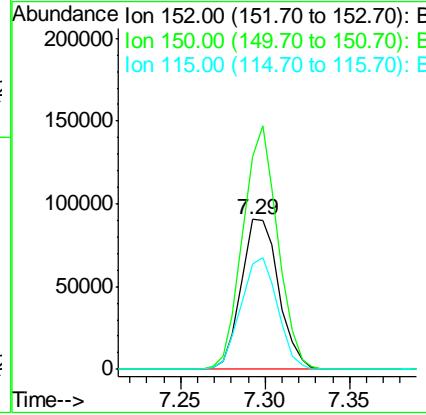
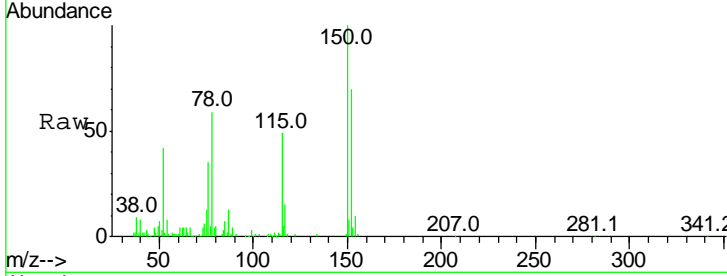




#1  
 1,4-Dichlorobenzene-d4  
 Concen: 20.000 ng  
 RT: 7.29 min Scan# 766  
 Delta R.T. -0.10 min  
 Lab File: BM011178.D  
 Acq: 09 Aug 2017 17:20

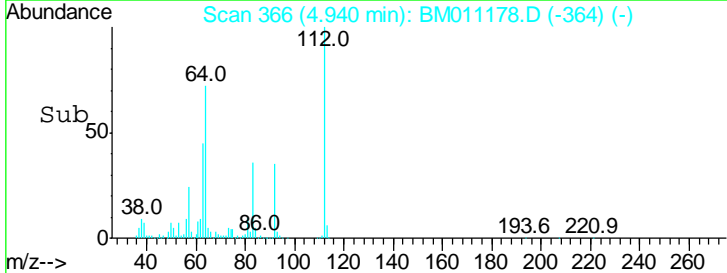
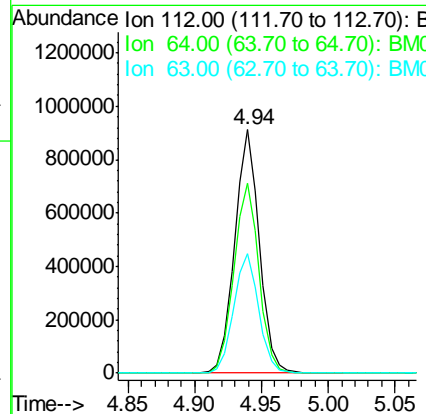
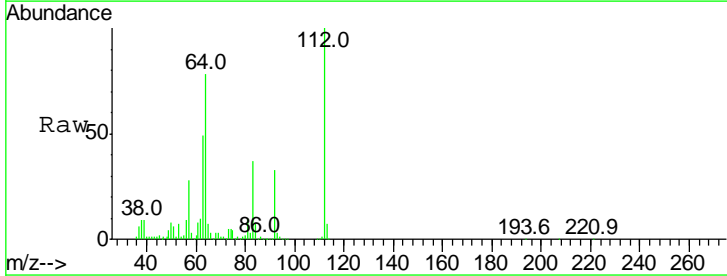
**Instrument :**  
 BNA\_M  
**ClientSampled :**  
 CLINTON-AVE-COMP-2

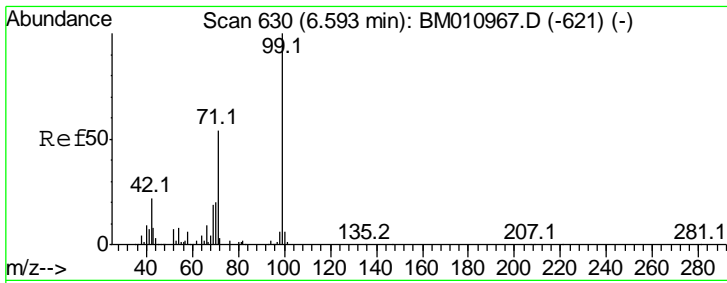
Tgt Ion	Resp	Lower	Upper
152	140051		
152	100		
150	142.0	119.5	179.3
115	70.1	43.0	64.4#



#5  
 2-Fluorophenol  
 Concen: 142.224 ng  
 RT: 4.94 min Scan# 366  
 Delta R.T. -0.09 min  
 Lab File: BM011178.D  
 Acq: 09 Aug 2017 17:20

Tgt Ion	Resp	Lower	Upper
112	1178307		
112	100		
64	78.2	38.6	57.8#
63	49.3	19.3	28.9#



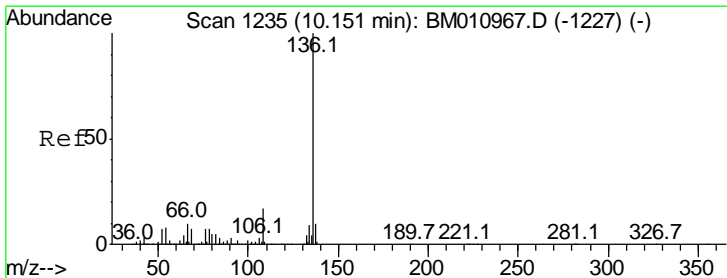
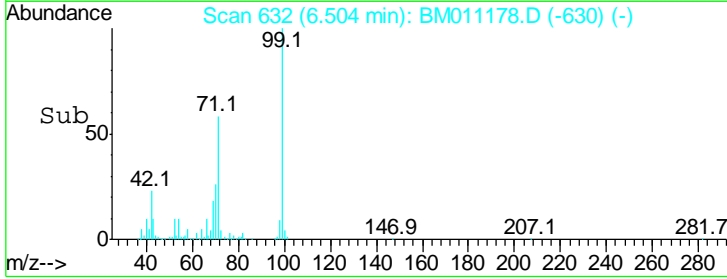
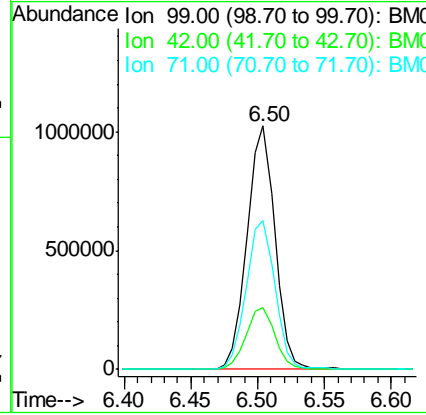
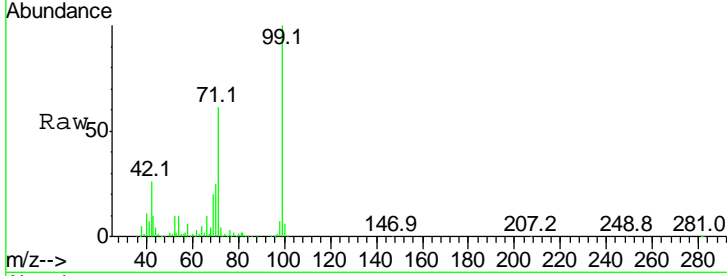


#7  
 Phenol-d6  
 Concen: 125.718 ng  
 RT: 6.50 min Scan# 632  
 Delta R.T. -0.09 min  
 Lab File: BM011178.D  
 Acq: 09 Aug 2017 17:20

**Instrument :**  
 BNA\_M  
**ClientSampleId :**  
 CLINTON-AVE-COMP-2

Tgt Ion: 99 Resp: 1479869

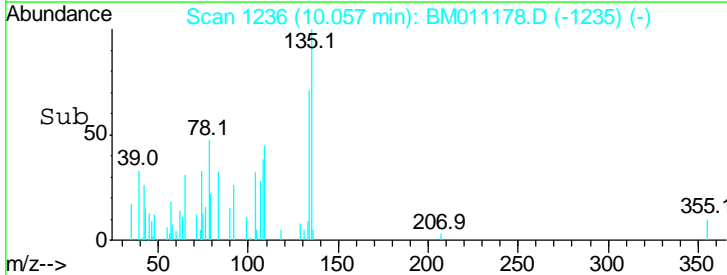
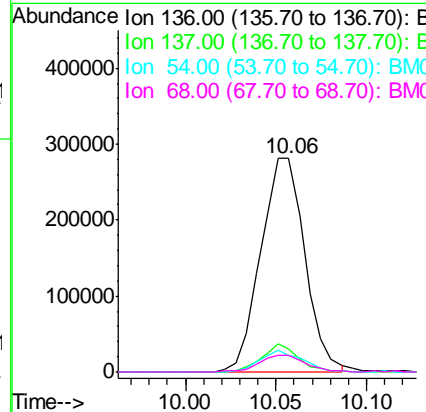
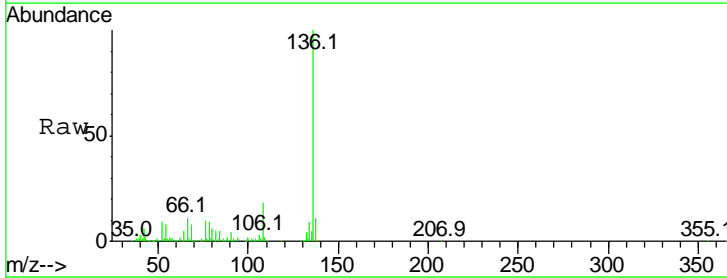
Ion	Ratio	Lower	Upper
99	100		
42	25.6	11.0	16.4#
71	61.4	23.4	35.2#

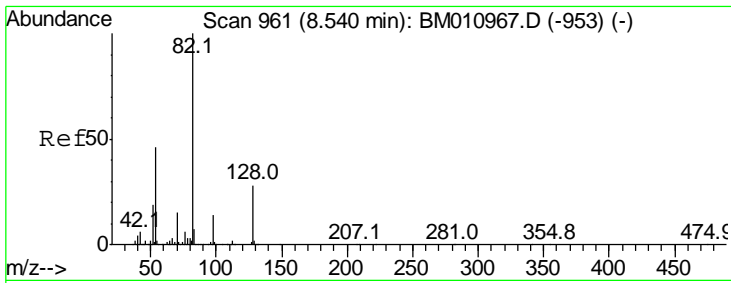


#21  
 Naphthalene-d8  
 Concen: 20.000 ng  
 RT: 10.06 min Scan# 1236  
 Delta R.T. -0.09 min  
 Lab File: BM011178.D  
 Acq: 09 Aug 2017 17:20

Tgt Ion: 136 Resp: 475604

Ion	Ratio	Lower	Upper
136	100		
137	10.9	8.7	13.1
54	8.1	4.6	6.8#
68	7.8	3.7	5.5#

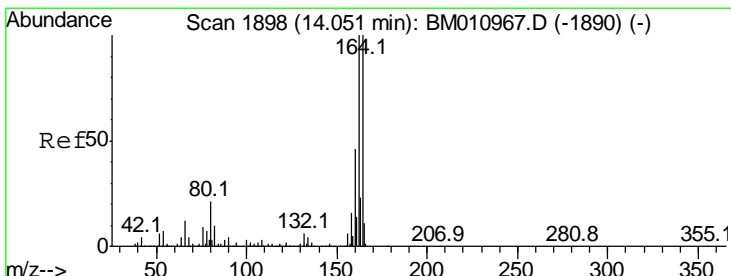
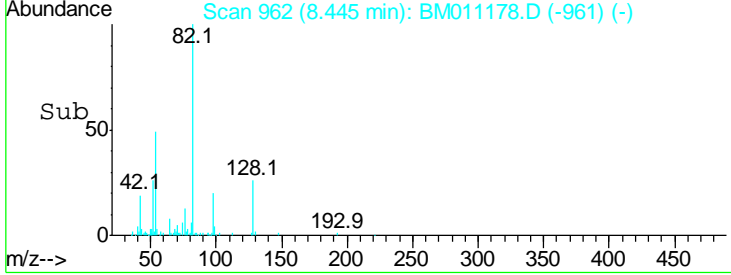
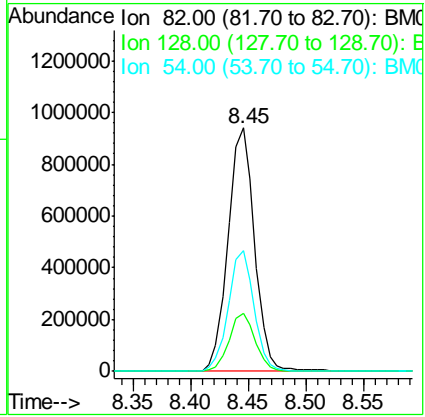
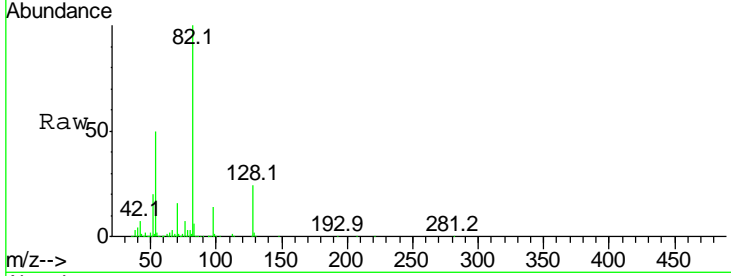




#23  
 Nitrobenzene-d5  
 Concen: 118.442 ng  
 RT: 8.45 min Scan# 962  
 Delta R.T. -0.09 min  
 Lab File: BM011178.D  
 Acq: 09 Aug 2017 17:20

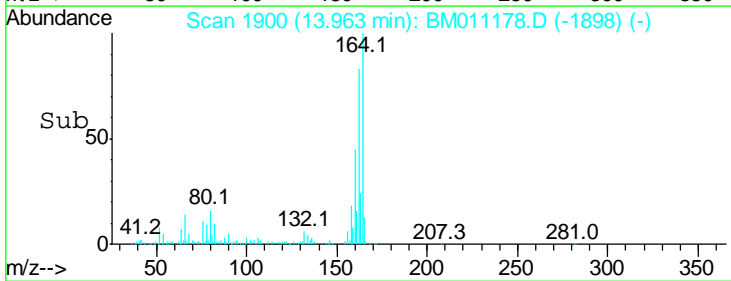
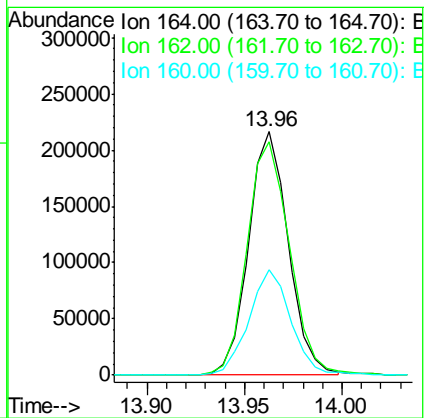
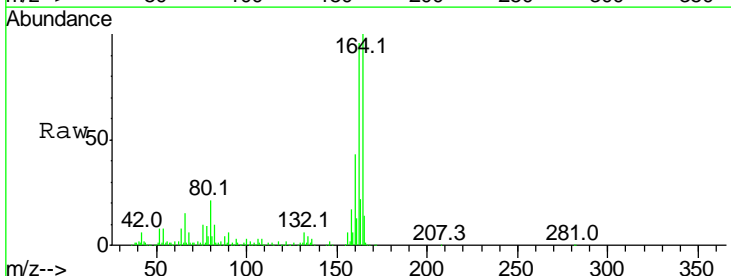
**Instrument :**  
 BNA\_M  
**ClientSampleId :**  
 CLINTON-AVE-COMP-2

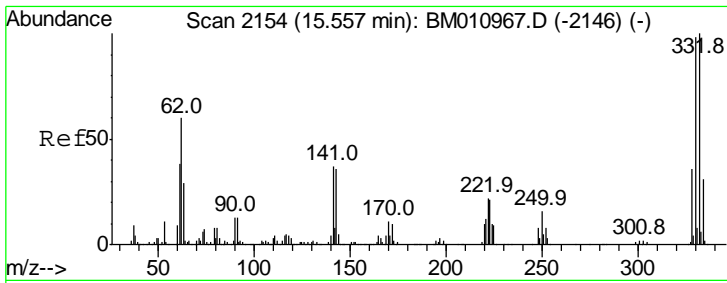
Tgt Ion	Resp	Lower	Upper
82	1500913		
128	23.6	32.8	49.2#
54	49.7	40.6	60.8



#38  
 Acenaphthene-d10  
 Concen: 20.000 ng  
 RT: 13.96 min Scan# 1900  
 Delta R.T. -0.09 min  
 Lab File: BM011178.D  
 Acq: 09 Aug 2017 17:20

Tgt Ion	Resp	Lower	Upper
164	304605		
162	95.7	82.4	123.6
160	43.4	35.8	53.6

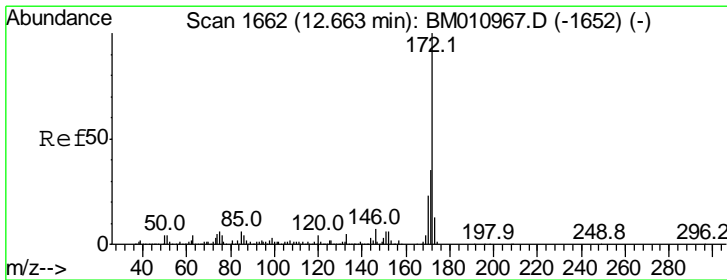
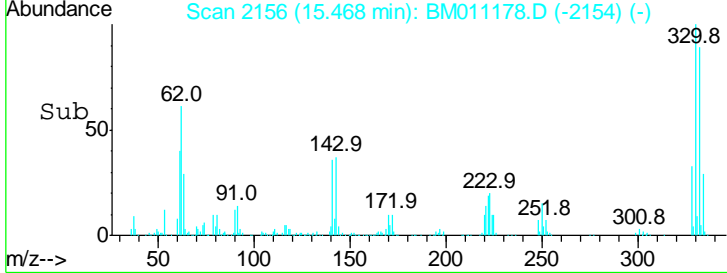
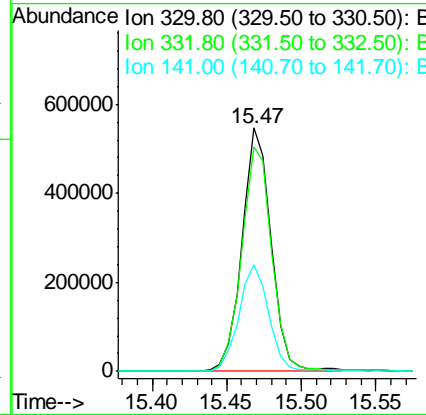
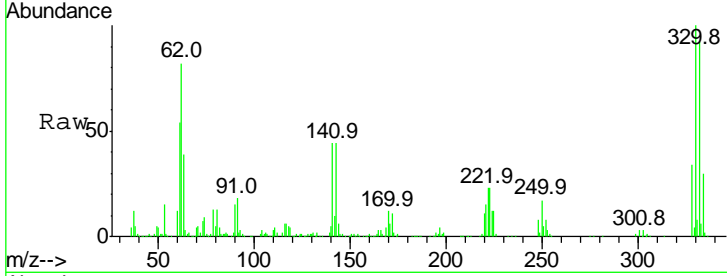




#41  
 2,4,6-Tribromophenol  
 Concen: 151.372 ng  
 RT: 15.47 min Scan# 2156  
 Delta R.T. -0.09 min  
 Lab File: BM011178.D  
 Acq: 09 Aug 2017 17:20

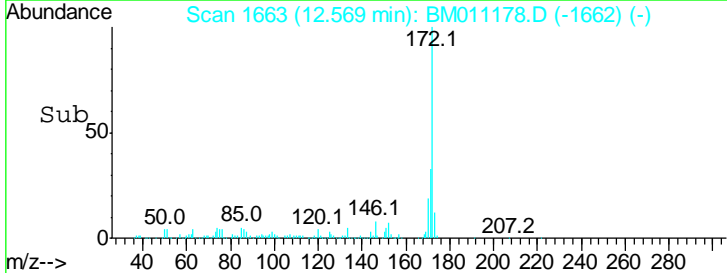
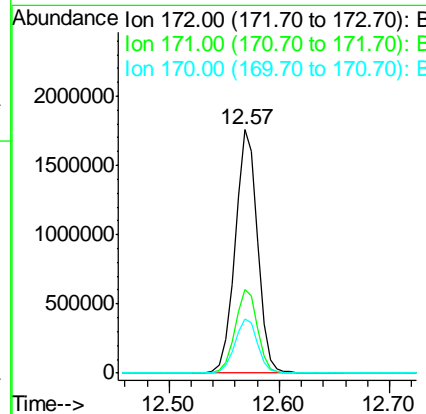
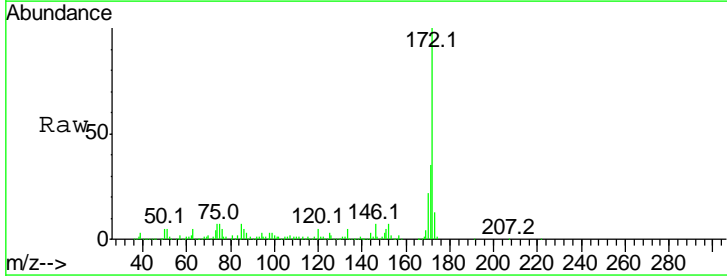
**Instrument :**  
 BNA\_M  
**ClientSampleId :**  
 CLINTON-AVE-COMP-2

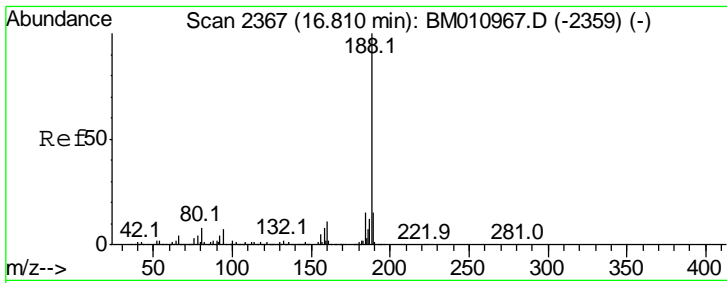
Tgt Ion	Resp	Lower	Upper
330	100		
332	95.7	0.0	0.0#
141	45.2	0.0	0.0#



#44  
 2-Fluorobiphenyl  
 Concen: 102.961 ng  
 RT: 12.57 min Scan# 1663  
 Delta R.T. -0.09 min  
 Lab File: BM011178.D  
 Acq: 09 Aug 2017 17:20

Tgt Ion	Resp	Lower	Upper
172	100		
171	34.5	28.5	42.7
170	22.3	18.8	28.2

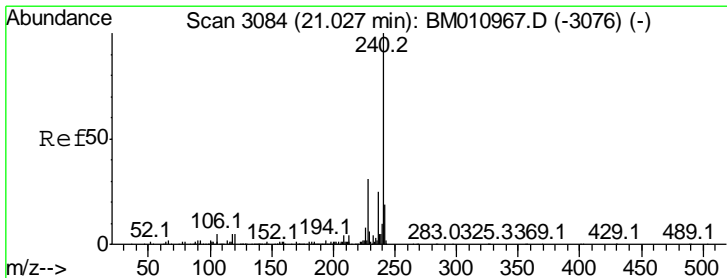
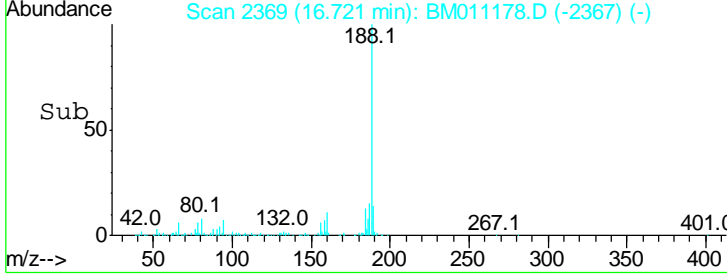
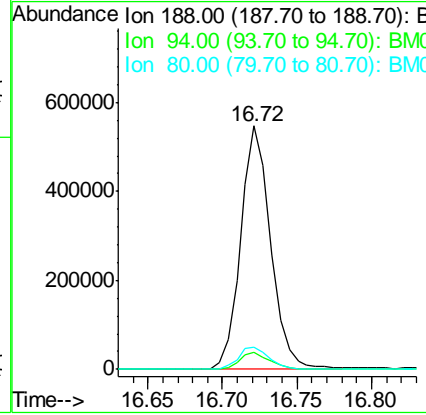
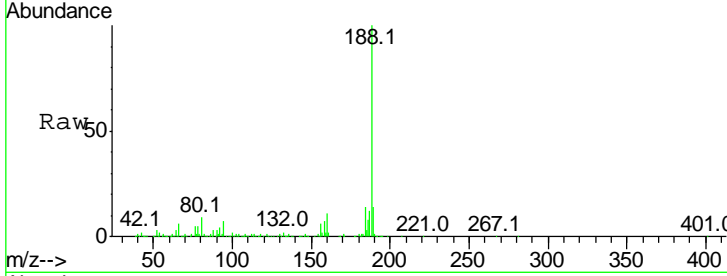




#63  
 Phenanthrene-d10  
 Concen: 20.000 ng  
 RT: 16.72 min Scan# 2369  
 Delta R.T. -0.09 min  
 Lab File: BM011178.D  
 Acq: 09 Aug 2017 17:20

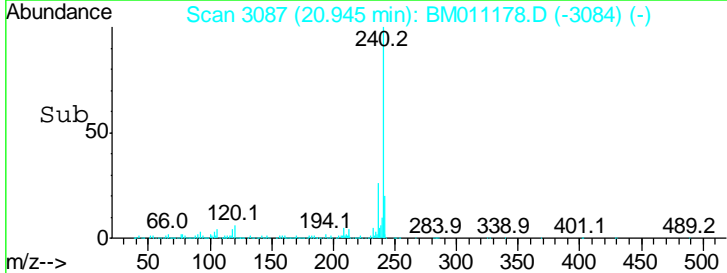
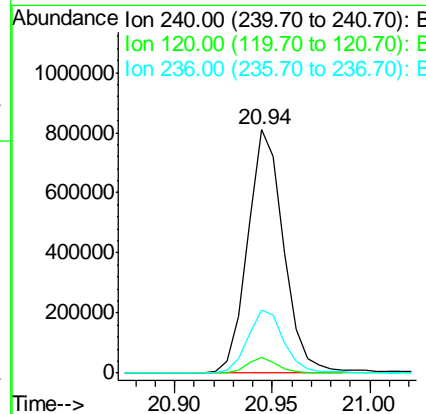
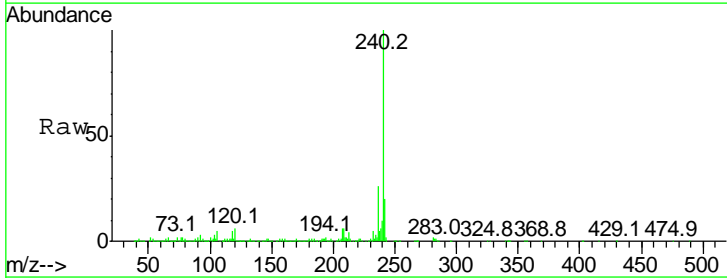
Instrument :  
 BNA\_M  
 ClientSampled :  
 CLINTON-AVE-COMP-2

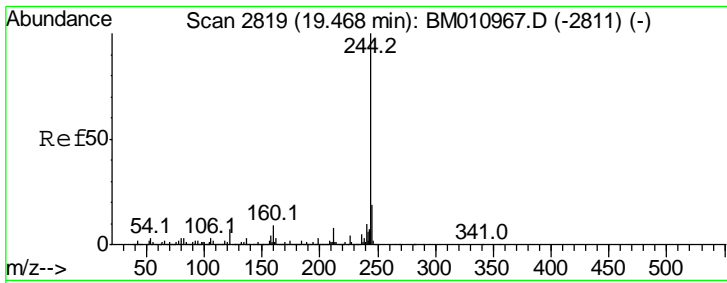
Tgt Ion	Ratio	Lower	Upper
188	100		
94	7.1	8.7	13.1#
80	9.1	9.3	13.9#



#75  
 Chrysene-d12  
 Concen: 20.000 ng  
 RT: 20.94 min Scan# 3087  
 Delta R.T. -0.08 min  
 Lab File: BM011178.D  
 Acq: 09 Aug 2017 17:20

Tgt Ion	Ratio	Lower	Upper
240	100		
120	6.2	8.2	12.2#
236	25.9	20.0	30.0

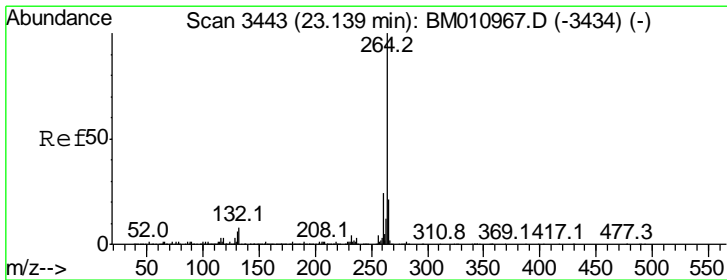
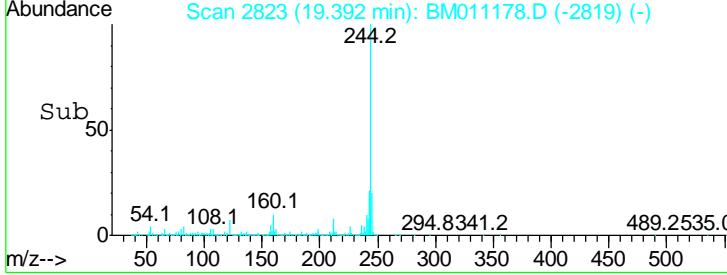
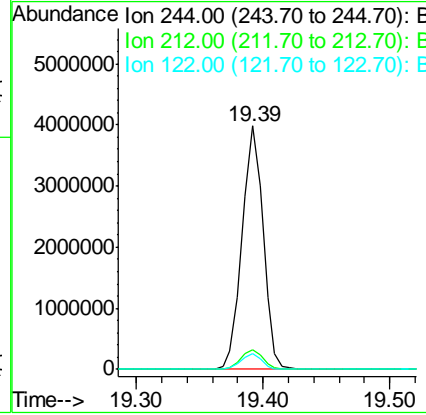
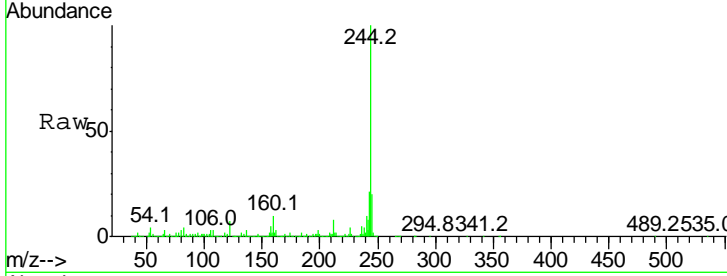




#78  
 Terphenyl-d14  
 Concen: 88.072 ng  
 RT: 19.39 min Scan# 2823  
 Delta R.T. -0.08 min  
 Lab File: BM011178.D  
 Acq: 09 Aug 2017 17:20

**Instrument :**  
 BNA\_M  
**ClientSampleId :**  
 CLINTON-AVE-COMP-2

Tgt Ion	Ratio	Lower	Upper
244	100		
212	8.2	4.9	7.3#
122	6.6	6.2	9.4



#86  
 Perylene-d12  
 Concen: 20.000 ng  
 RT: 23.03 min Scan# 3441  
 Delta R.T. -0.11 min  
 Lab File: BM011178.D  
 Acq: 09 Aug 2017 17:20

Tgt Ion	Ratio	Lower	Upper
264	100		
260	25.0	18.6	27.8
265	23.8	17.3	25.9

