

Data Path : Z:\SVOASRV\HPCHEM1\BNA M\DATA\BM081120\  
 Data File : BM027034.D  
 Acq On : 11 Aug 2020 17:26  
 Operator : JU/CG  
 Sample : L3636-12  
 Misc :  
 ALS Vial : 6 Sample Multiplier: 1

Instrument :  
 BNA\_M  
 ClientSampleId :  
 BFMN9

Integration Parameters: LSCINT.P

Integrator: RTE  
 Smoothing : OFF  
 Sampling : 1  
 Start Thrs: 0.2  
 Stop Thrs : 0

Filtering: 5  
 Min Area: 0.1 % of largest Peak  
 Max Peaks: 100  
 Peak Location: TOP

If leading or trailing edge < 100 prefer < Baseline drop else tangent >  
 Peak separation: 5

Method : Z:\SVOASRV\HPCHEM1\BNA\_M\METHODS\SOM-EPA-BM080720MA.M  
 Title : SVOA CALIBRATION

Signal : TIC

peak #	R.T. min	first scan	max scan	last scan	PK TY	peak height	corr. area	corr. % max.	% of total
1	3.199	32	36	41	rVB	21150	24879	1.37%	0.151%
2	3.828	139	143	147	rBV	5003	6889	0.38%	0.042%
3	3.910	155	157	162	rVB3	5217	6791	0.37%	0.041%
4	5.204	372	377	378	rBV2	2386	2711	0.15%	0.016%
5	5.328	394	398	404	rBV	5546	8255	0.45%	0.050%
6	5.693	452	460	465	rBV2	4797	7934	0.44%	0.048%
7	6.822	646	652	662	rBV	66424	109260	6.00%	0.663%
8	6.981	673	679	691	rBV	215782	322723	17.73%	1.959%
9	7.181	705	713	724	rVB	253119	391651	21.52%	2.378%
10	7.275	724	729	731	rBV3	3745	5347	0.29%	0.032%
11	7.645	785	792	799	rBV	288642	451210	24.79%	2.740%
12	7.722	801	805	809	rVB3	1157	1952	0.11%	0.012%
13	8.345	905	911	918	rBV	179933	273171	15.01%	1.659%
14	8.781	978	985	994	rBV	278091	442846	24.34%	2.689%
15	9.504	1099	1108	1117	rBV	214996	348149	19.13%	2.114%
16	10.039	1189	1199	1208	rBV	346631	558981	30.72%	3.394%
17	10.416	1256	1263	1278	rVB	342763	558011	30.66%	3.388%
18	10.545	1280	1285	1292	rBV2	20528	34465	1.89%	0.209%
19	12.010	1530	1534	1538	rBV2	3662	6383	0.35%	0.039%
20	13.198	1729	1736	1738	rBV4	1421	2168	0.12%	0.013%
21	13.692	1814	1820	1824	rBV	665938	883514	48.55%	5.364%
22	13.739	1824	1828	1836	rVB	101572	143368	7.88%	0.870%
23	13.963	1859	1866	1873	rBV	637762	923752	50.76%	5.609%
24	14.016	1873	1875	1878	rVB2	1732	1834	0.10%	0.011%
25	14.274	1913	1919	1927	rBV	498165	712650	39.16%	4.327%
26	14.468	1946	1952	1958	rBV	46362	65889	3.62%	0.400%
27	14.510	1958	1959	1963	rVB2	3117	2389	0.13%	0.015%
28	14.968	2032	2037	2042	rBV4	1270	2374	0.13%	0.014%
29	15.115	2058	2062	2064	rBV2	1646	1823	0.10%	0.011%
30	15.268	2082	2088	2096	rBV	891787	1255180	68.97%	7.621%
31	15.333	2096	2099	2103	rVB3	1925	2288	0.13%	0.014%
32	15.386	2103	2108	2119	rBV	267216	348062	19.13%	2.113%
33	15.510	2124	2129	2134	rVB	8907	10976	0.60%	0.067%
34	15.639	2148	2151	2154	rVB3	1450	1867	0.10%	0.011%

Data Path : Z:\SVOASRV\HPCHEM1\BNA M\DATA\BM081120\  
 Data File : BM027034.D  
 Acq On : 11 Aug 2020 17:26  
 Operator : JU/CG  
 Sample : L3636-12  
 Misc :  
 ALS Vial : 6 Sample Multiplier: 1

Instrument :  
 BNA\_M  
 ClientSampleId :  
 BFMN9

## Integration Parameters: LSCINT.P

Integrator: RTE  
 Smoothing : OFF  
 Sampling : 1  
 Start Thrs: 0.2  
 Stop Thrs : 0

Filtering: 5  
 Min Area: 0.1 % of largest Peak  
 Max Peaks: 100  
 Peak Location: TOP

If leading or trailing edge < 100 prefer < Baseline drop else tangent >  
 Peak separation: 5

Method : Z:\SVOASRV\HPCHEM1\BNA\_M\METHODS\SOM-EPA-BM080720MA.M  
 Title : SVOA CALIBRATION

35	16.057	2219	2222	2228	rVB3	2330	2894	0.16%	0.018%
36	16.580	2305	2311	2314	rVB4	1779	2370	0.13%	0.014%
37	16.804	2346	2349	2354	rBV3	2106	2980	0.16%	0.018%
38	17.021	2379	2386	2393	rVB	621459	879231	48.32%	5.338%
39	17.115	2396	2402	2413	rBV2	1129767	1492950	82.04%	9.065%
40	17.321	2434	2437	2442	rVB4	1472	2221	0.12%	0.013%
41	17.433	2455	2456	2462	rBV3	1343	1954	0.11%	0.012%
42	17.704	2498	2502	2507	rVB	82964	101541	5.58%	0.617%
43	17.827	2520	2523	2525	rBV3	2588	2918	0.16%	0.018%
44	17.939	2537	2542	2550	rBV	50793	71920	3.95%	0.437%
45	18.003	2550	2553	2558	rVB	4763	6553	0.36%	0.040%
46	18.145	2574	2577	2581	rBV2	7139	9545	0.52%	0.058%
47	18.186	2581	2584	2587	rVB4	3550	4509	0.25%	0.027%
48	18.245	2590	2594	2597	rBV3	2535	2771	0.15%	0.017%
49	18.721	2673	2675	2680	rVB3	1917	2660	0.15%	0.016%
50	18.886	2699	2703	2707	rVB5	3402	4208	0.23%	0.026%
51	19.051	2727	2731	2735	rBV	10522	13116	0.72%	0.080%
52	19.103	2738	2740	2743	rVV4	2269	2292	0.13%	0.014%
53	19.227	2758	2761	2767	rBV5	22804	27818	1.53%	0.169%
54	19.303	2771	2774	2779	rVV2	7932	8934	0.49%	0.054%
55	19.415	2787	2793	2799	rBV	1337948	1764002	96.93%	10.710%
56	19.462	2799	2801	2806	rVB5	4872	6506	0.36%	0.040%
57	19.962	2883	2886	2889	rBV5	5529	7072	0.39%	0.043%
58	20.956	3051	3055	3063	rBV2	104710	144253	7.93%	0.876%
59	21.215	3094	3099	3105	rBV	867248	1058046	58.14%	6.424%
60	23.280	3443	3450	3458	rBV	1032654	1819788	100.00%	11.049%
61	23.415	3467	3473	3485	rVB2	611487	1107227	60.84%	6.723%

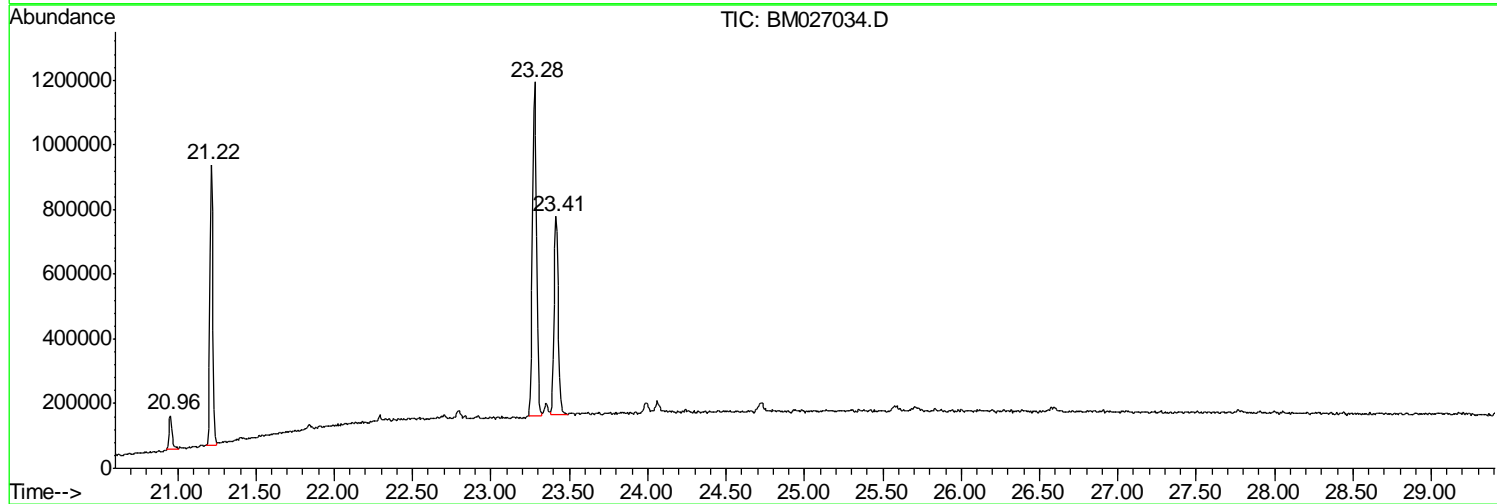
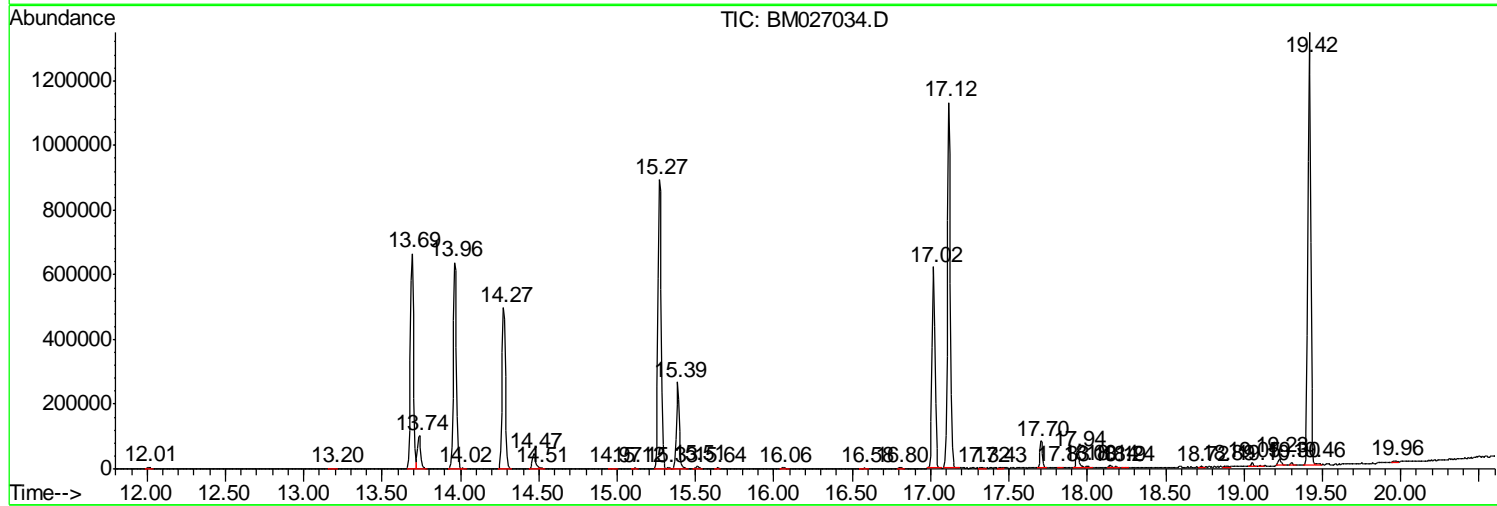
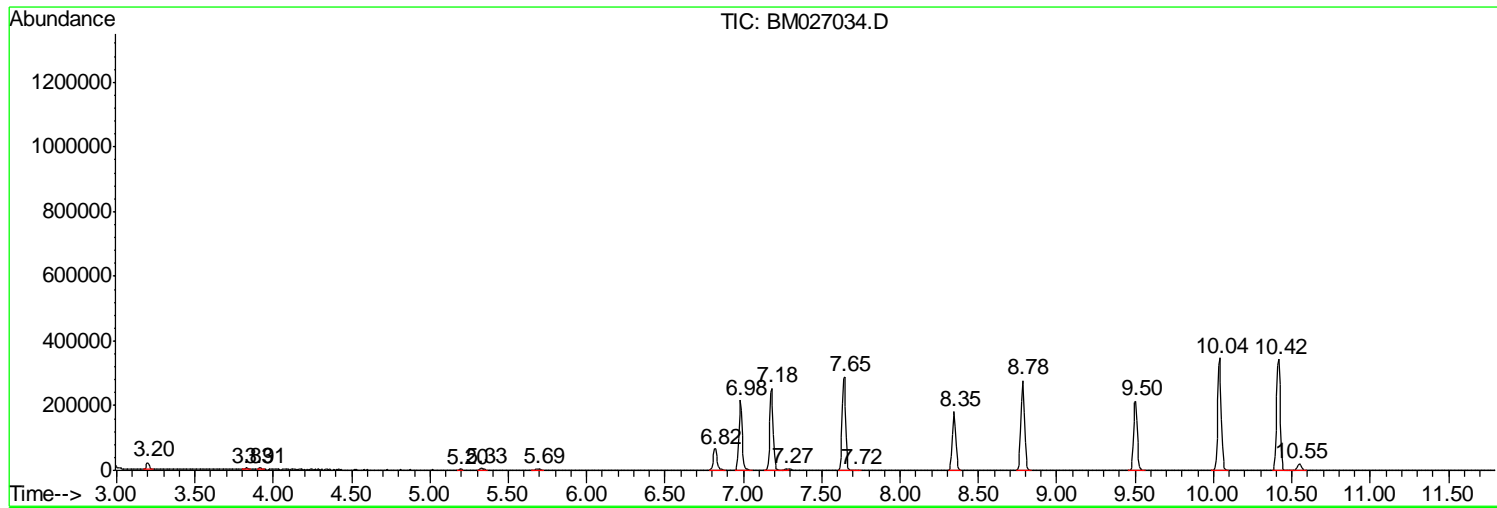
Sum of corrected areas: 16470021

Data Path : Z:\SVOASRV\HPCHEM1\BNA M\DATA\BM081120\  
 Data File : BM027034.D  
 Acq On : 11 Aug 2020 17:26  
 Operator : JU/CG  
 Sample : L3636-12  
 Misc :  
 ALS Vial : 6 Sample Multiplier: 1

Instrument :  
 BNA\_M  
 ClientSampleId :  
 BFMN9

Quant Method : Z:\SVOASRV\HPCHEM1\BNA\_M\METHODS\SOM-EPA-BM080720MA.M  
 Quant Title : SVOA CALIBRATION

TIC Library : C:\DATABASE\NIST11.L  
 TIC Integration Parameters: LSCINT.P



Data Path : Z:\SVOASRV\HPCHEM1\BNA M\DATA\BM081120\  
 Data File : BM027034.D  
 Acq On : 11 Aug 2020 17:26  
 Operator : JU/CG  
 Sample : L3636-12  
 Misc :  
 ALS Vial : 6 Sample Multiplier: 1

Instrument :  
 BNA\_M  
 ClientSampleId :  
 BFMN9

Quant Method : Z:\SVOASRV\HPCHEM1\BNA\_M\METHODS\SOM-EPA-BM080720MA.M  
 Quant Title : SVOA CALIBRATION

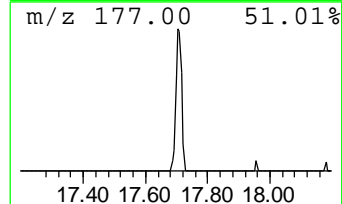
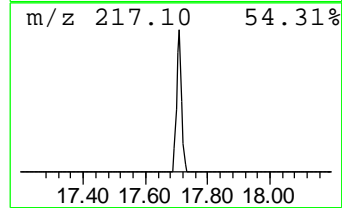
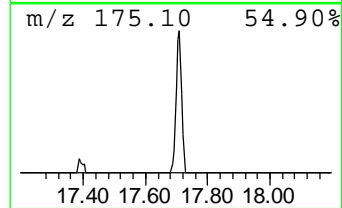
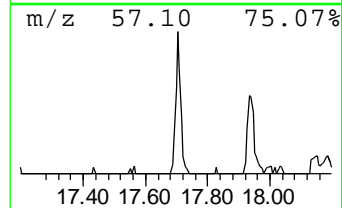
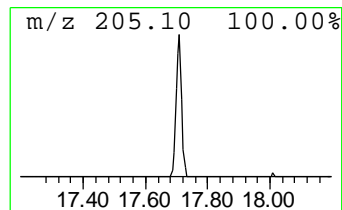
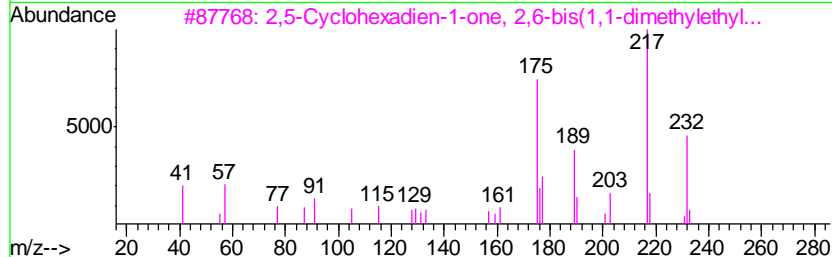
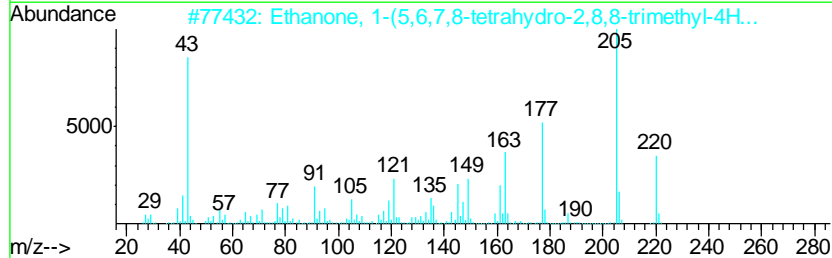
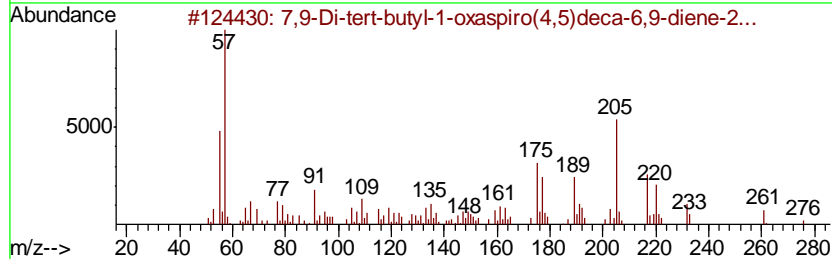
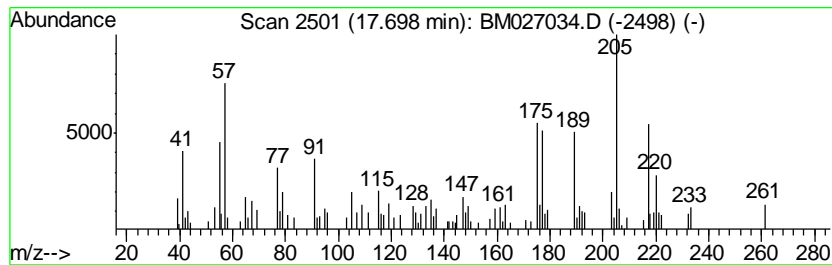
TIC Library : C:\DATABASE\NIST11.L  
 TIC Integration Parameters: LSCINT.P

\*\*\*\*\*  
 Peak Number 1 7,9-Di-tert-butyl-1-oxaspiro... Concentration Rank 2

R.T.	EstConc	Area	Relative to ISTD	R.T.
17.70	2.31 ng/ul	101541	Phenanthrene-d10	17.02

Hit#	of	Tentative ID	MW	MolForm	CAS#	Qual
1	5	7,9-Di-tert-butyl-1-oxaspiro(4,5...	276	C17H24O3	082304-66-3	83
2		Ethanone, 1-(5,6,7,8-tetrahydro-...	220	C14H20O2	071596-88-8	80
3		2,5-Cyclohexadien-1-one, 2,6-bis...	232	C16H24O	006738-27-8	50
4		2,4-Dimethyl-5,6-dimethoxy-8-ami...	232	C13H16N2O2	064993-02-8	30
5		3,5-Cyclohexadiene-1,2-dione, 3,...	220	C14H20O2	003383-21-9	30



Data Path : Z:\SVOASRV\HPCHEM1\BNA M\DATA\BM081120\  
 Data File : BM027034.D  
 Acq On : 11 Aug 2020 17:26  
 Operator : JU/CG  
 Sample : L3636-12  
 Misc :  
 ALS Vial : 6 Sample Multiplier: 1

Instrument :  
 BNA\_M  
 ClientSampled :  
 BFMN9

Quant Method : Z:\SVOASRV\HPCHEM1\BNA\_M\METHODS\SOM-EPA-BM080720MA.M  
 Quant Title : SVOA CALIBRATION

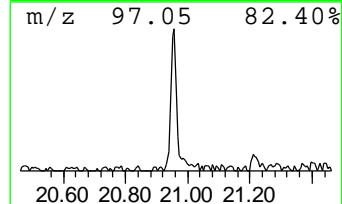
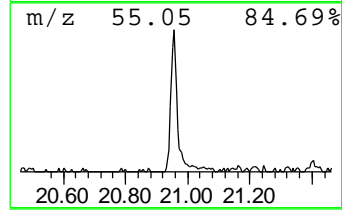
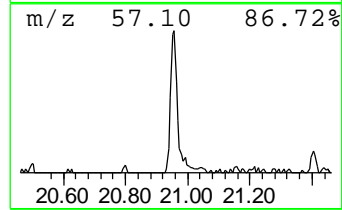
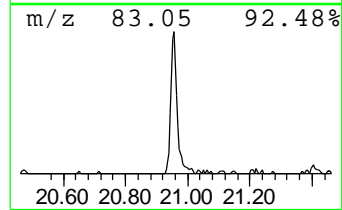
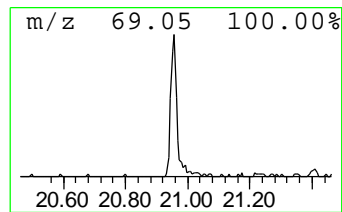
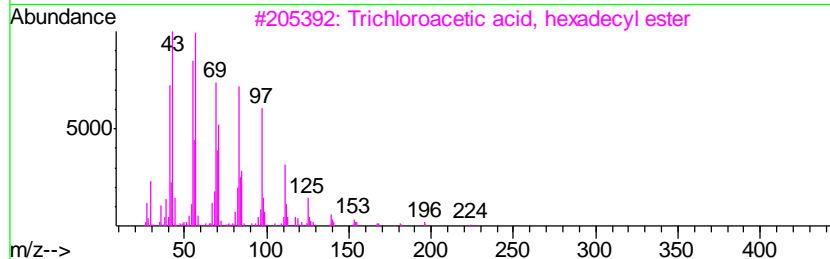
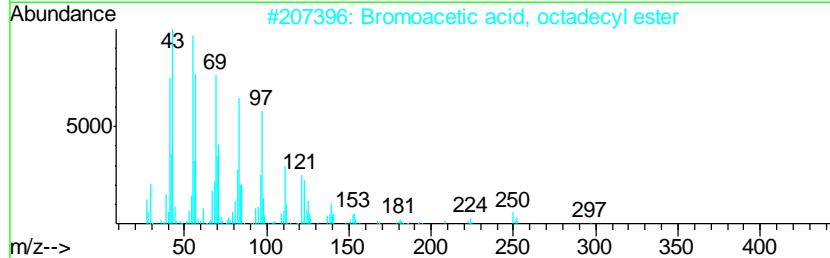
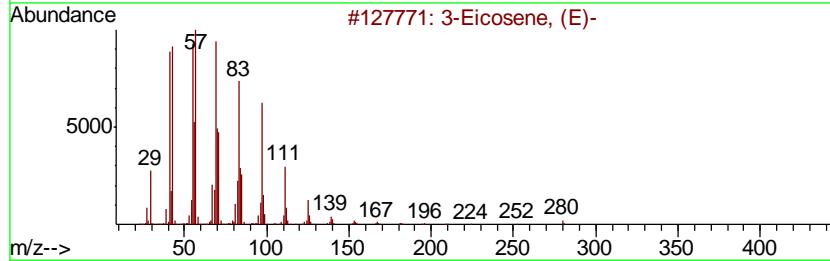
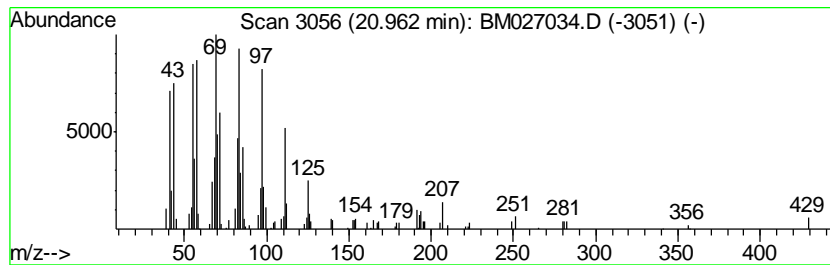
TIC Library : C:\DATABASE\NIST11.L  
 TIC Integration Parameters: LSCINT.P

\*\*\*\*\*  
 Peak Number 2 (DEL) Alkane: Straight-Chai... Concentration Rank 1

R.T.	EstConc	Area	Relative to ISTD	R.T.
20.96	2.73 ng/ul	144253	Chrysene-d12	21.22

Hit#	of	Tentative ID	MW	MolForm	CAS#	Qual
1	5	3-Eicosene, (E)-	280	C20H40	074685-33-9	91
2		Bromoacetic acid, octadecyl ester	390	C20H39BrO2	018992-03-5	91
3		Trichloroacetic acid, hexadecyl ...	386	C18H33Cl3O2	074339-54-1	81
4		1-Docosene	308	C22H44	001599-67-3	81
5		Cyclotetracosane	336	C24H48	000297-03-0	76



Data Path : Z:\SVOASRV\HPCHEM1\BNA\_M\DATA\BM081120\  
Data File : BM027034.D  
Acq On : 11 Aug 2020 17:26  
Operator : JU/CG  
Sample : L3636-12  
Misc :  
ALS Vial : 6 Sample Multiplier: 1

Instrument :  
BNA\_M  
ClientSampleId :  
BFMN9

Quant Method : Z:\SVOASRV\HPCHEM1\BNA\_M\METHODS\SOM-EPA-BM080720MA.M  
Quant Title : SVOA CALIBRATION

TIC Library : C:\DATABASE\NIST11.L  
TIC Integration Parameters: LSCINT.P

TIC Top Hit name	RT	EstConc	Units	Response	--Internal Standard--			
					#	RT	Resp	Conc
7,9-Di-tert-butyl...	17.70	2.3	ng/ul	101541	4	17.02	879231	20.0
(DEL) Alkane: Str...	20.96	2.7	ng/ul	144253	5	21.22	1058050	20.0