

Data Path : Z:\HPCHEM1\BNA\_G\DATA\BG081215\  
 Data File : BG018408.D  
 Acq On : 12 Aug 2015 21:44  
 Operator : UM/MA  
 Sample : MDL-BLK-S  
 Misc :  
 ALS Vial : 14 Sample Multiplier: 1

Instrument :  
 BNA\_M  
 ClientSampleId :  
 MDL-BLK-S

Quant Time: Aug 13 04:11:34 2015  
 Quant Method : Z:\HPCHEM1\BNA\_G\METHODS\SOM02.2-EPA-BG080915.M  
 Quant Title : SVOA CALIBRATION  
 QLast Update : Thu Aug 13 04:07:41 2015  
 Response via : Initial Calibration

| Internal Standards        | R.T.  | QIon | Response | Conc  | Units | Dev(Min) |
|---------------------------|-------|------|----------|-------|-------|----------|
| 1) 1,4-Dichlorobenzene-d4 | 8.02  | 152  | 95263    | 20.00 | ng/ul | 0.00     |
| 18) Naphthalene-d8        | 10.83 | 136  | 414458   | 20.00 | ng/ul | 0.00     |
| 36) Acenaphthene-d10      | 14.65 | 164  | 263666   | 20.00 | ng/ul | 0.00     |
| 62) Phenanthrene-d10      | 17.39 | 188  | 651894   | 20.00 | ng/ul | 0.00     |
| 78) Chrysene-d12          | 21.65 | 240  | 646141   | 20.00 | ng/ul | 0.00     |
| 86) Perylene-d12          | 24.87 | 264  | 636218   | 20.00 | ng/ul | 0.00     |

## System Monitoring Compounds

|                                |       |     |         |       |       |      |
|--------------------------------|-------|-----|---------|-------|-------|------|
| 3) 1,4-Dioxane-d8              | 3.46  | 96  | 11394   | 5.29  | ng/uL | 0.00 |
| 5) Phenol-d5                   | 7.18  | 99  | 246914  | 28.56 | ng/ul | 0.00 |
| 7) Bis-(2-Chloroethyl)ether-d  | 7.35  | 67  | 156773  | 29.26 | ng/ul | 0.00 |
| 9) 2-Chlorophenol-d4           | 7.55  | 132 | 192876  | 29.13 | ng/ul | 0.00 |
| 13) 4-Methylphenol-d8          | 8.73  | 113 | 210961  | 29.04 | ng/ul | 0.00 |
| 19) Nitrobenzene-d5            | 9.18  | 128 | 103920  | 32.17 | ng/ul | 0.00 |
| 22) 2-Nitrophenol-d4           | 9.90  | 143 | 109914  | 33.40 | ng/ul | 0.00 |
| 26) 2,4-Dichlorophenol-d3      | 10.44 | 165 | 207347  | 29.69 | ng/ul | 0.00 |
| 29) 4-Chloroaniline-d4         | 10.96 | 131 | 296464  | 37.56 | ng/ul | 0.00 |
| 44) Dimethylphthalate-d6       | 14.05 | 166 | 686751  | 30.96 | ng/ul | 0.00 |
| 47) Acenaphthylene-d8          | 14.34 | 160 | 842308  | 30.15 | ng/ul | 0.00 |
| 52) 4-Nitrophenol-d4           | 14.84 | 143 | 126730  | 31.76 | ng/ul | 0.00 |
| 58) Fluorene-d10               | 15.64 | 176 | 593371  | 30.71 | ng/ul | 0.00 |
| 63) 4,6-Dinitro-2-methylphenol | 15.75 | 200 | 81949   | 25.56 | ng/ul | 0.00 |
| 71) Anthracene-d10             | 17.49 | 188 | 959863  | 30.79 | ng/ul | 0.00 |
| 79) Pyrene-d10                 | 19.77 | 212 | 1033459 | 30.83 | ng/ul | 0.00 |
| 90) Benzo(a)pyrene-d12         | 24.64 | 264 | 1042659 | 30.87 | ng/ul | 0.00 |

## Target Compounds

| Target Compounds               | R.T.  | QIon | Response | Conc | Units  | Qvalue |
|--------------------------------|-------|------|----------|------|--------|--------|
| 2) 1,4-Dioxane                 | 3.48  | 88   | 210      | 0.09 | ng/uL# | 1      |
| 4) Benzaldehyde                | 7.16  | 77   | 415      | 0.08 | ng/ul# | 1      |
| 6) Phenol                      | 7.26  | 94   | 213      | 0.02 | ng/ul# | 40     |
| 8) Bis(2-Chloroethyl)ether     | 7.43  | 93   | 701      | 0.10 | ng/ul# | 48     |
| 10) 2-Chlorophenol             | 7.69  | 128  | 152      | 0.02 | ng/ul# | 33     |
| 12) 2,2'-oxybis(1-Chloropropan | 8.58  | 45   | 128      | 0.01 | ng/ul# | 1      |
| 14) Acetophenone               | 8.82  | 105  | 251      | 0.02 | ng/ul# | 24     |
| 15) N-Nitroso-di-n-propylamine | 8.81  | 70   | 140      | 0.02 | ng/ul# | 1      |
| 16) 4-Methylphenol             | 8.73  | 108  | 188      | 0.03 | ng/ul# | 1      |
| 17) Hexachloroethane           | 9.05  | 117  | 142      | 0.05 | ng/ul# | 10     |
| 20) Nitrobenzene               | 9.22  | 77   | 94       | 0.01 | ng/ul# | 42     |
| 21) Isophorone                 | 9.72  | 82   | 91       | 0.01 | ng/ul# | 23     |
| 24) 2,4-Dimethylphenol         | 10.05 | 107  | 65       | 0.01 | ng/ul# | 12     |
| 25) Bis(2-Chloroethoxy)methane | 10.23 | 93   | 54       | 0.01 | ng/ul# | 52     |
| 27) 2,4-Dichlorophenol         | 10.42 | 162  | 192      | 0.03 | ng/ul# | 43     |
| 28) Naphthalene                | 10.95 | 128  | 326      | 0.01 | ng/ul# | 25     |
| 30) 4-Chloroaniline            | 10.95 | 127  | 177      | 0.02 | ng/ul# | 1      |
| 32) Caprolactam                | 11.99 | 113  | 131      | 0.05 | ng/ul# | 53     |
| 33) 4-Chloro-3-methylphenol    | 12.12 | 107  | 115      | 0.02 | ng/ul# | 18     |
| 42) 2-Chloronaphthalene        | 13.54 | 162  | 146      | 0.01 | ng/ul# | 40     |
| 43) 2-Nitroaniline             | 13.73 | 65   | 94       | 0.02 | ng/ul# | 9      |
| 45) Dimethylphthalate          | 14.14 | 163  | 146      | 0.01 | ng/ul# | 78     |
| 46) 2,6-Dinitrotoluene         | 14.37 | 165  | 76       | 0.02 | ng/ul# | 28     |

Data Path : Z:\HPCHEM1\BNA\_G\DATA\BG081215\  
 Data File : BG018408.D  
 Acq On : 12 Aug 2015 21:44  
 Operator : UM/MA  
 Sample : MDL-BLK-S  
 Misc :  
 ALS Vial : 14 Sample Multiplier: 1

Instrument :  
 BNA\_M  
 ClientSampleId :  
 MDL-BLK-S

Quant Time: Aug 13 04:11:34 2015  
 Quant Method : Z:\HPCHEM1\BNA\_G\METHODS\SOM02.2-EPA-BG080915.M  
 Quant Title : SVOA CALIBRATION  
 QLast Update : Thu Aug 13 04:07:41 2015  
 Response via : Initial Calibration

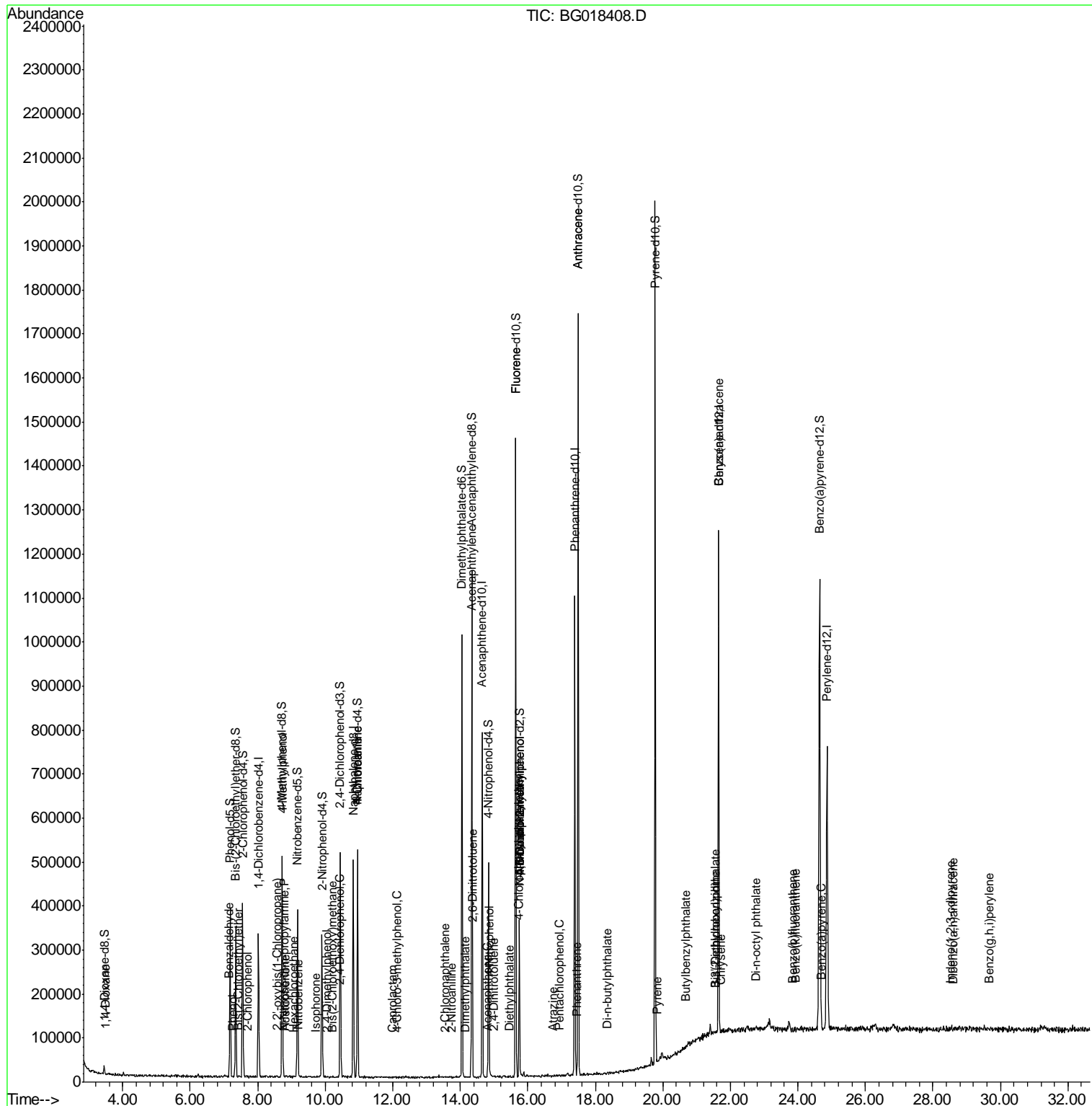
| Internal Standards             | R.T.  | QIon | Response | Conc | Units  | Dev(Min) |
|--------------------------------|-------|------|----------|------|--------|----------|
| 48) Acenaphthylene             | 14.35 | 152  | 81       | 0.00 | ng/ul# | 1        |
| 50) Acenaphthene               | 14.80 | 153  | 55       | 0.00 | ng/ul# | 1        |
| 53) 4-Nitrophenol              | 14.86 | 109  | 141      | 0.04 | ng/ul# | 1        |
| 55) 2,4-Dinitrotoluene         | 14.99 | 165  | 59       | 0.01 | ng/ul# | 34       |
| 57) Diethylphthalate           | 15.46 | 149  | 320      | 0.01 | ng/ul# | 58       |
| 59) Fluorene                   | 15.65 | 166  | 1632     | 0.07 | ng/ul# | 46       |
| 60) 4-Chlorophenyl-phenylether | 15.74 | 204  | 132      | 0.01 | ng/ul# | 56       |
| 61) 4-Nitroaniline             | 15.75 | 138  | 823      | 0.17 | ng/ul# | 1        |
| 64) 4,6-Dinitro-2-methylphenol | 15.75 | 198  | 583      | 0.17 | ng/ul# | 1        |
| 65) N-Nitrosodiphenylamine     | 15.76 | 169  | 745      | 0.04 | ng/ul# | 63       |
| 68) Atrazine                   | 16.75 | 200  | 142      | 0.02 | ng/ul# | 37       |
| 69) Pentachlorophenol          | 16.93 | 266  | 126      | 0.03 | ng/ul# | 16       |
| 70) Phenanthrene               | 17.46 | 178  | 137      | 0.00 | ng/ul# | 58       |
| 72) Anthracene                 | 17.49 | 178  | 615      | 0.02 | ng/ul# | 1        |
| 76) Di-n-butylphthalate        | 18.35 | 149  | 414      | 0.01 | ng/ul# | 44       |
| 80) Pyrene                     | 19.81 | 202  | 76       | 0.00 | ng/ul# | 67       |
| 81) Butylbenzylphthalate       | 20.68 | 149  | 488      | 0.03 | ng/ul# | 34       |
| 82) 3,3'-Dichlorobenzidine     | 21.54 | 252  | 630      | 0.05 | ng/ul# | 22       |
| 83) Benzo(a)anthracene         | 21.66 | 228  | 2261     | 0.06 | ng/ul# | 66       |
| 84) Bis(2-ethylhexyl)phthalate | 21.54 | 149  | 856      | 0.03 | ng/ul# | 89       |
| 85) Chrysene                   | 21.72 | 228  | 92       | 0.00 | ng/ul# | 1        |
| 87) Di-n-octyl phthalate       | 22.76 | 149  | 454      | 0.01 | ng/ul  | 100      |
| 88) Benzo(b)fluoranthene       | 23.84 | 252  | 238      | 0.01 | ng/ul# | 1        |
| 89) Benzo(k)fluoranthene       | 23.93 | 252  | 321      | 0.01 | ng/ul# | 1        |
| 91) Benzo(a)pyrene             | 24.70 | 252  | 113      | 0.00 | ng/ul# | 1        |
| 92) Indeno(1,2,3-cd)pyrene     | 28.52 | 276  | 65       | 0.00 | ng/ul# | 1        |
| 93) Dibenzo(a,h)anthracene     | 28.58 | 278  | 115      | 0.00 | ng/ul# | 1        |
| 94) Benzo(g,h,i)perylene       | 29.67 | 276  | 91       | 0.00 | ng/ul# | 9        |

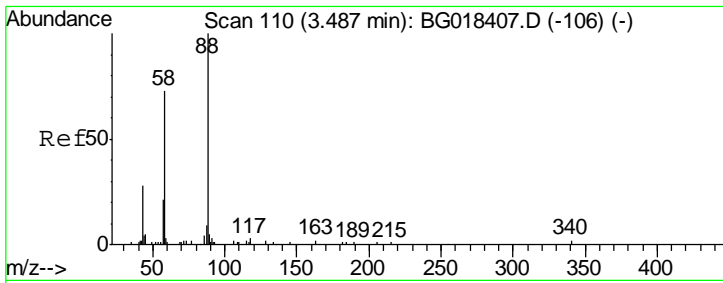
(#) = qualifier out of range (m) = manual integration (+) = signals summed

Data Path : Z:\HPCHEM1\BNA\_G\DATA\BG081215\  
 Data File : BG018408.D  
 Acq On : 12 Aug 2015 21:44  
 Operator : UM/MA  
 Sample : MDL-BLK-S  
 Misc :  
 ALS Vial : 14 Sample Multiplier: 1

Instrument :  
 BNA\_M  
 Client Sample ID :  
 MDL-BLK-S

Quant Time: Aug 13 04:11:34 2015  
 Quant Method : Z:\HPCHEM1\BNA\_G\METHODS\SOM02.2-EPA-BG080915.M  
 Quant Title : SVOA CALIBRATION  
 QLast Update : Thu Aug 13 04:07:41 2015  
 Response via : Initial Calibration

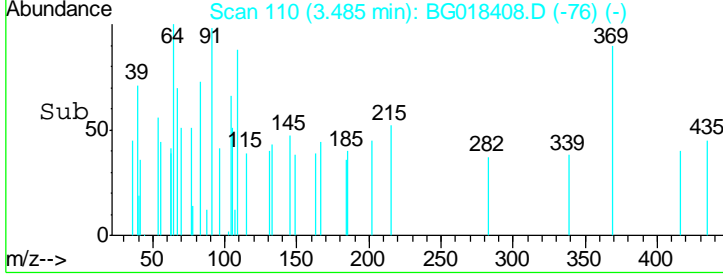
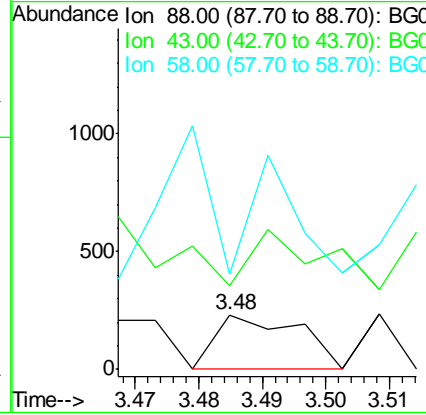
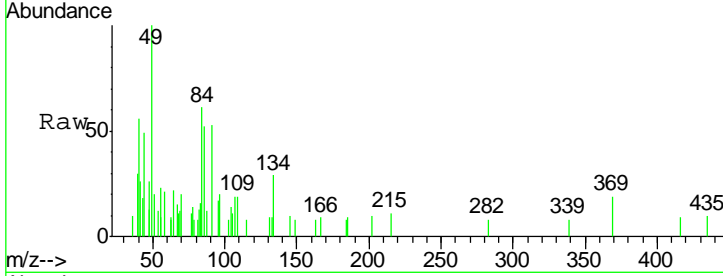




#2  
 1,4-Dioxane  
 Concen: 0.09 ng/uL  
 RT: 3.48 min Scan# 110  
 Delta R.T. -0.00 min  
 Lab File: BG018408.D  
 Acq: 12 Aug 2015 21:44

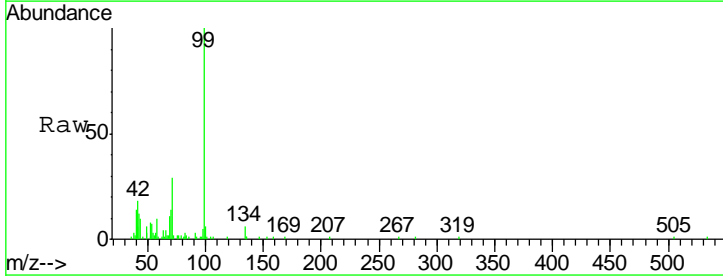
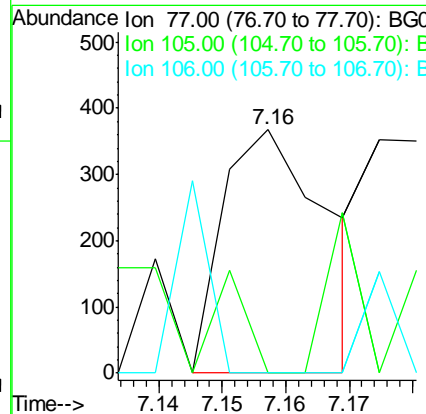
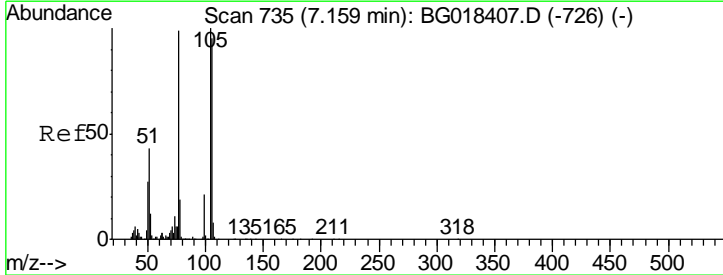
Instrument :  
 BNA\_M  
 ClientSampled :  
 MDL-BLK-S

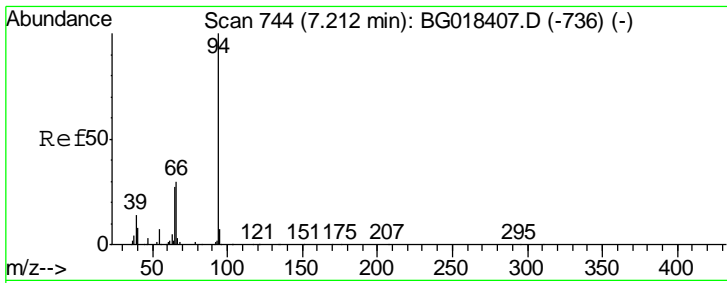
| Tgt Ion | Resp  | Lower | Upper  |
|---------|-------|-------|--------|
| 88      | 100   |       |        |
| 43      | 153.0 | 33.0  | 49.4#  |
| 58      | 173.7 | 73.4  | 110.0# |



#4  
 Benzaldehyde  
 Concen: 0.08 ng/ul  
 RT: 7.16 min Scan# 735  
 Delta R.T. -0.00 min  
 Lab File: BG018408.D  
 Acq: 12 Aug 2015 21:44

| Tgt Ion | Resp | Lower | Upper  |
|---------|------|-------|--------|
| 77      | 100  |       |        |
| 105     | 0.0  | 78.2  | 117.2# |
| 106     | 0.0  | 76.8  | 115.2# |

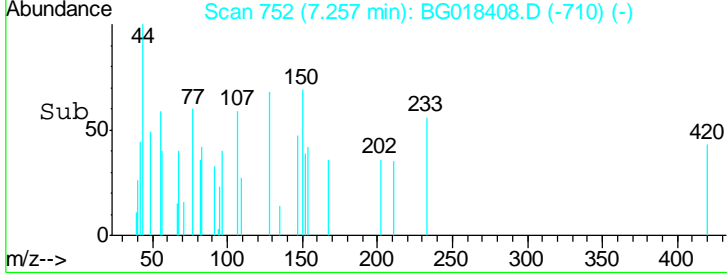
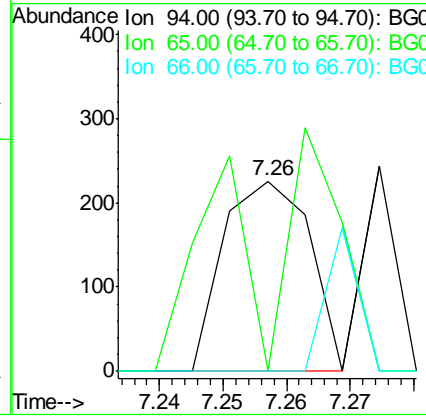
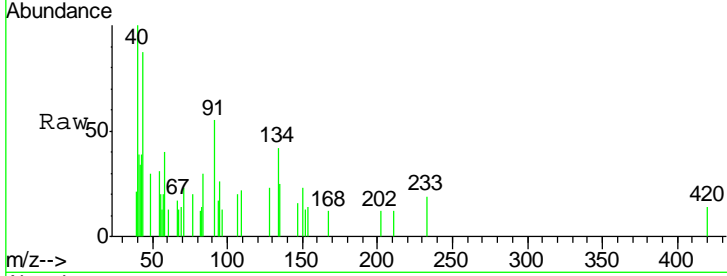




#6  
 Phenol  
 Concen: 0.02 ng/ul  
 RT: 7.26 min Scan# 752  
 Delta R.T. 0.04 min  
 Lab File: BG018408.D  
 Acq: 12 Aug 2015 21:44

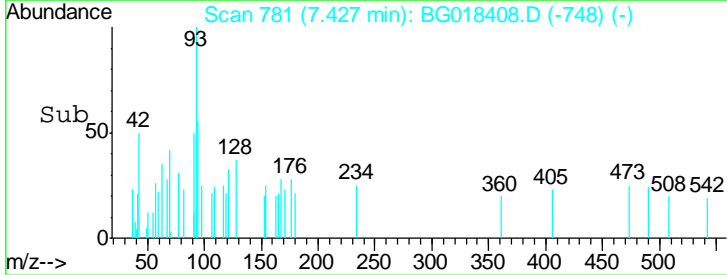
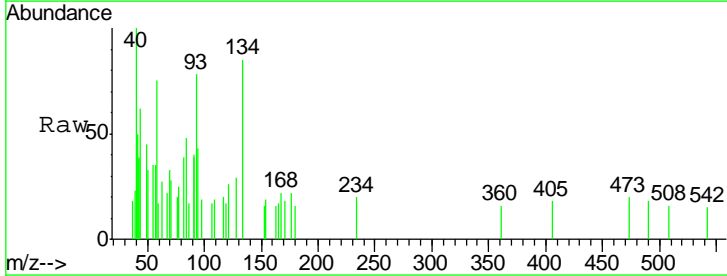
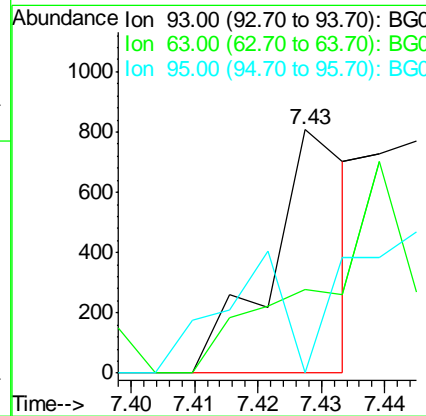
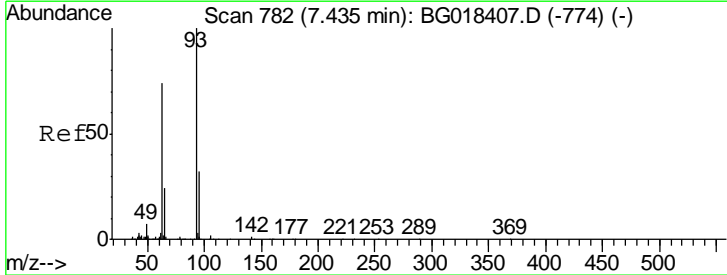
**Instrument :**  
 BNA\_M  
**ClientSampled :**  
 MDL-BLK-S

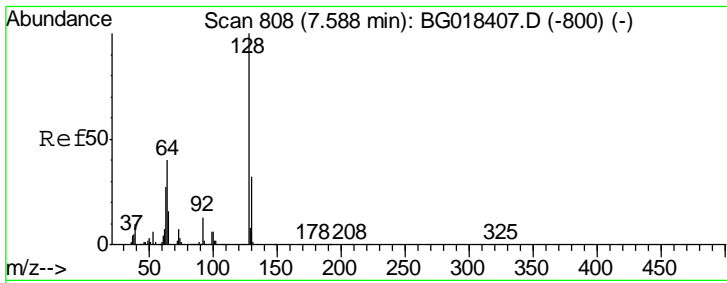
| Tgt Ion | Resp | Lower | Upper |
|---------|------|-------|-------|
| 94      | 100  |       |       |
| 65      | 0.0  | 23.0  | 34.6# |
| 66      | 0.0  | 31.0  | 46.4# |



#8  
 Bis(2-Chloroethyl)ether  
 Concen: 0.10 ng/ul  
 RT: 7.43 min Scan# 781  
 Delta R.T. -0.01 min  
 Lab File: BG018408.D  
 Acq: 12 Aug 2015 21:44

| Tgt Ion | Resp | Lower | Upper |
|---------|------|-------|-------|
| 93      | 100  |       |       |
| 63      | 34.5 | 61.4  | 92.2# |
| 95      | 0.0  | 25.9  | 38.9# |

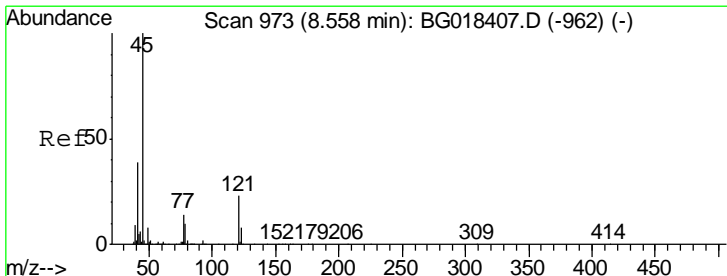
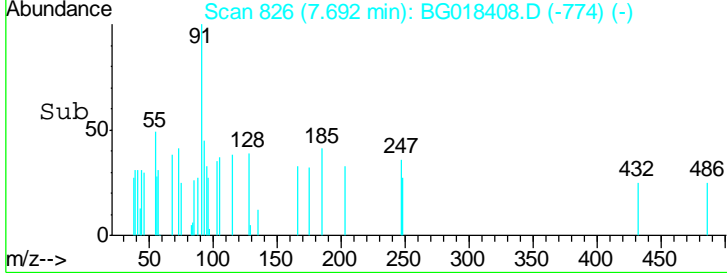
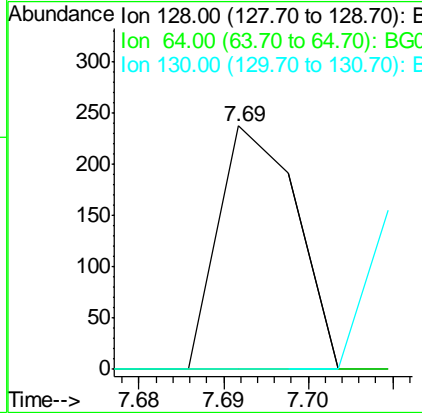
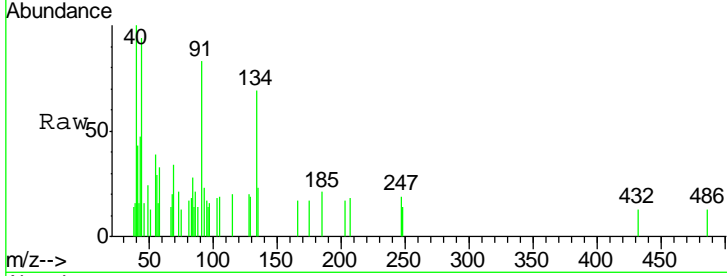




#10  
 2-Chlorophenol  
 Concen: 0.02 ng/ul  
 RT: 7.69 min Scan# 826  
 Delta R.T. 0.10 min  
 Lab File: BG018408.D  
 Acq: 12 Aug 2015 21:44

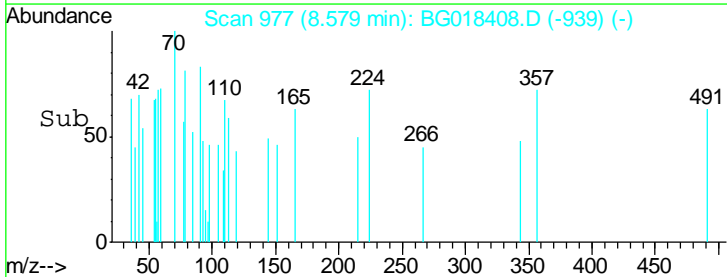
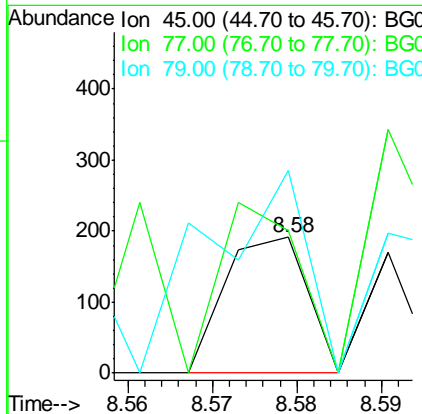
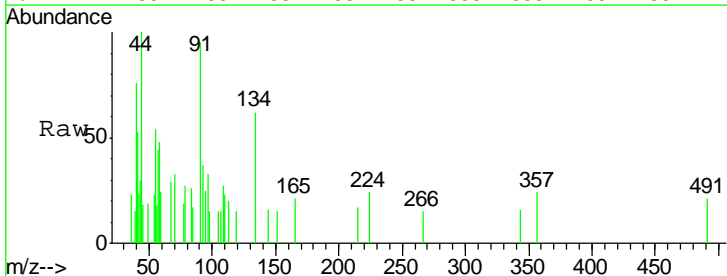
Instrument :  
 BNA\_M  
 ClientSampleID :  
 MDL-BLK-S

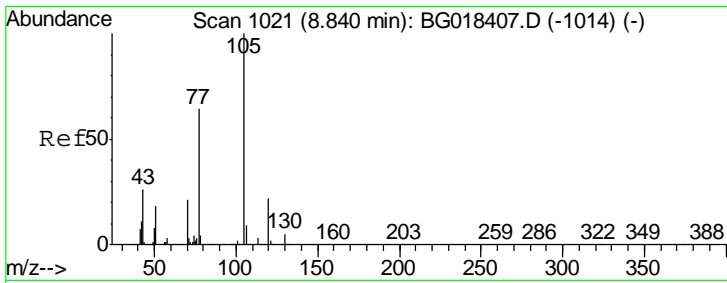
| Tgt Ion | Resp | Lower | Upper |
|---------|------|-------|-------|
| 128     | 100  |       |       |
| 64      | 0.0  | 40.9  | 61.3# |
| 130     | 0.0  | 24.5  | 36.7# |



#12  
 2,2'-oxybis(1-Chloropropane)  
 Concen: 0.01 ng/ul  
 RT: 8.58 min Scan# 977  
 Delta R.T. 0.02 min  
 Lab File: BG018408.D  
 Acq: 12 Aug 2015 21:44

| Tgt Ion | Resp  | Lower | Upper |
|---------|-------|-------|-------|
| 45      | 100   |       |       |
| 77      | 105.2 | 11.3  | 16.9# |
| 79      | 149.7 | 7.8   | 11.8# |

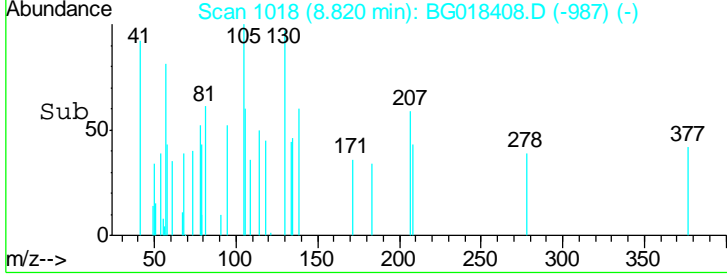
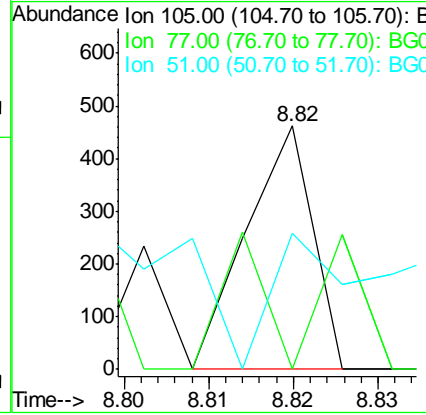
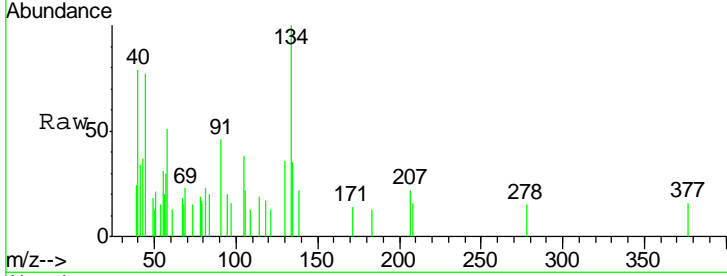




#14  
 Acetophenone  
 Concen: 0.02 ng/ul  
 RT: 8.82 min Scan# 1018  
 Delta R.T. -0.02 min  
 Lab File: BG018408.D  
 Acq: 12 Aug 2015 21:44

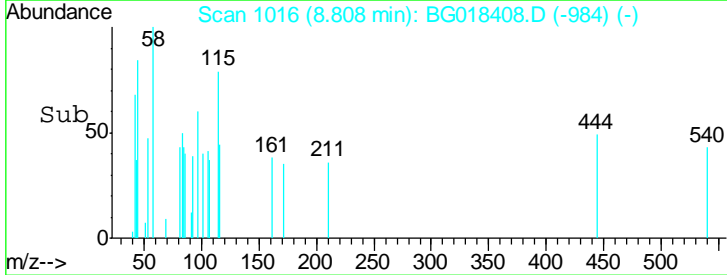
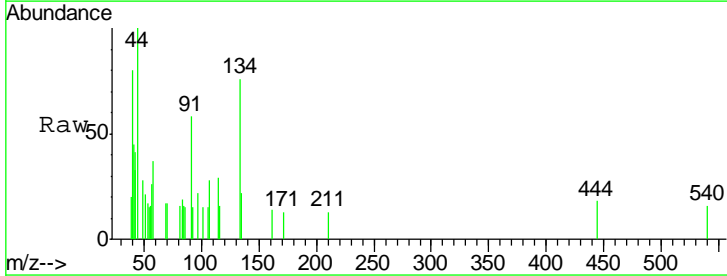
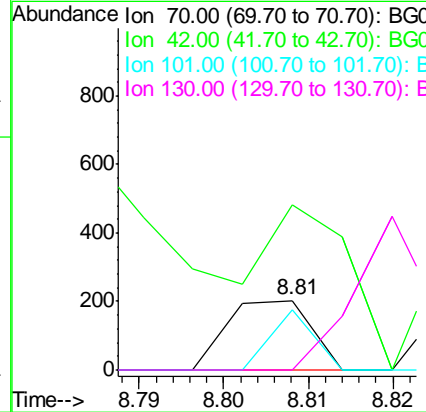
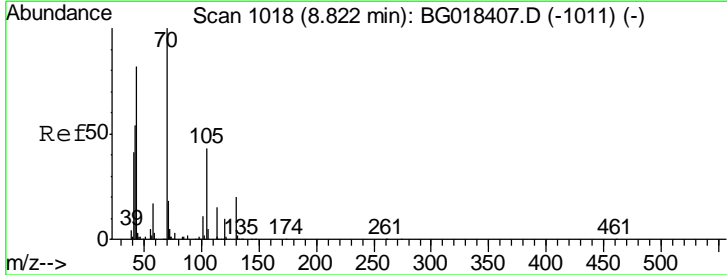
Instrument :  
 BNA\_M  
 ClientSampled :  
 MDL-BLK-S

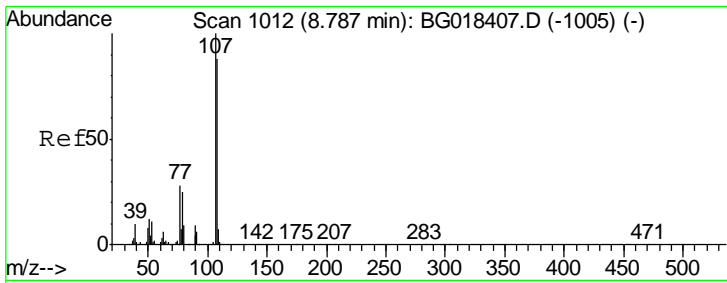
| Tgt Ion | Ratio | Lower | Upper |
|---------|-------|-------|-------|
| 105     | 100   |       |       |
| 77      | 0.0   | 61.9  | 92.9# |
| 51      | 56.1  | 25.5  | 38.3# |



#15  
 N-Nitroso-di-n-propylamine  
 Concen: 0.02 ng/ul  
 RT: 8.81 min Scan# 1016  
 Delta R.T. -0.01 min  
 Lab File: BG018408.D  
 Acq: 12 Aug 2015 21:44

| Tgt Ion | Ratio | Lower | Upper |
|---------|-------|-------|-------|
| 70      | 100   |       |       |
| 42      | 428.7 | 50.7  | 76.1# |
| 101     | 86.6  | 7.4   | 11.2# |
| 130     | 0.0   | 15.8  | 23.6# |

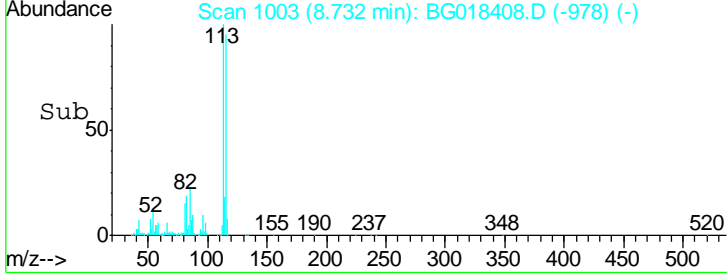
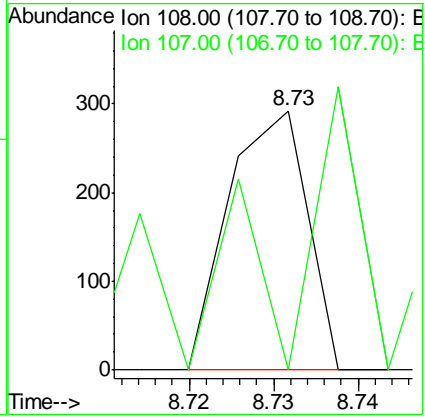
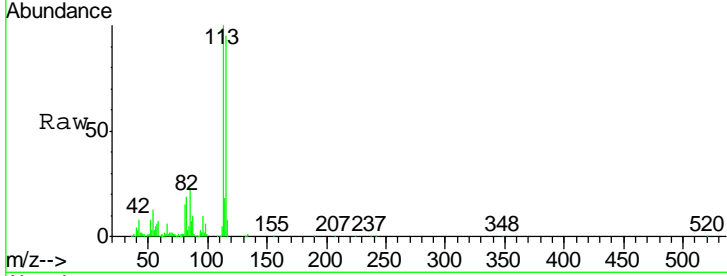




#16  
 4-Methylphenol  
 Concen: 0.03 ng/ul  
 RT: 8.73 min Scan# 1003  
 Delta R.T. -0.06 min  
 Lab File: BG018408.D  
 Acq: 12 Aug 2015 21:44

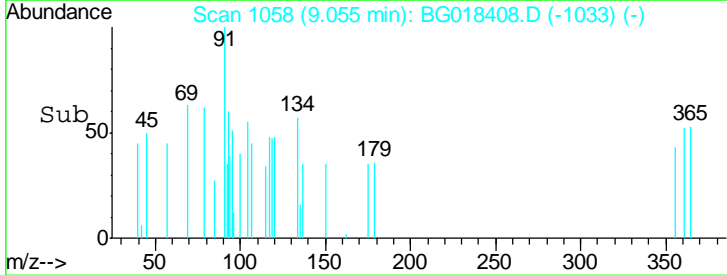
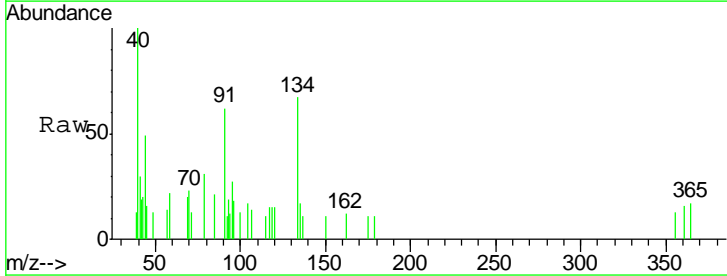
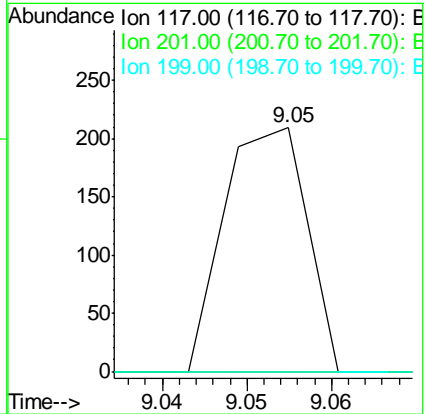
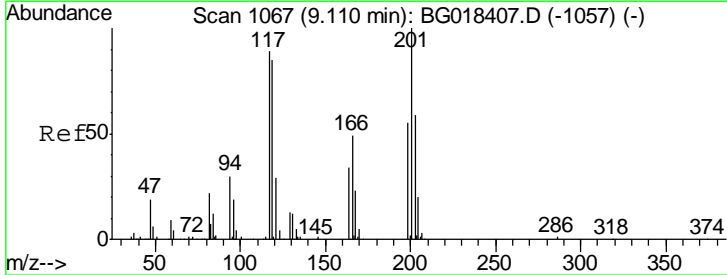
**Instrument :**  
 BNA\_M  
**ClientSampled :**  
 MDL-BLK-S

Tgt Ion:108 Resp: 188  
 Ion Ratio Lower Upper  
 108 100  
 107 0.0 94.6 142.0#

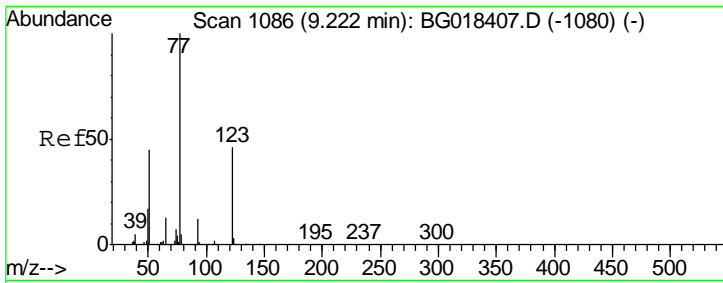


#17  
 Hexachloroethane  
 Concen: 0.05 ng/ul  
 RT: 9.05 min Scan# 1058  
 Delta R.T. -0.06 min  
 Lab File: BG018408.D  
 Acq: 12 Aug 2015 21:44

Tgt Ion:117 Resp: 142  
 Ion Ratio Lower Upper  
 117 100  
 201 0.0 73.6 110.4#  
 199 0.0 48.6 72.8#



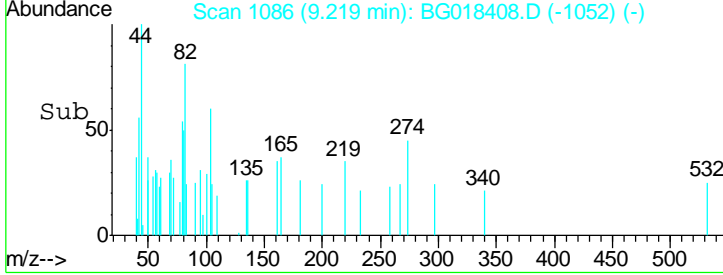
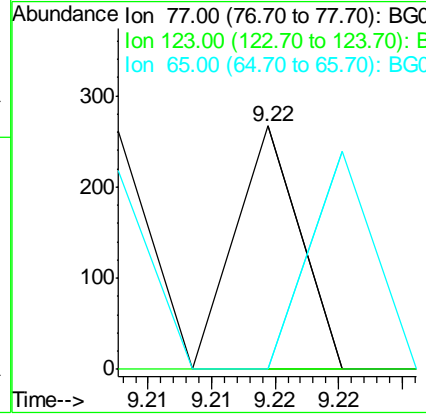
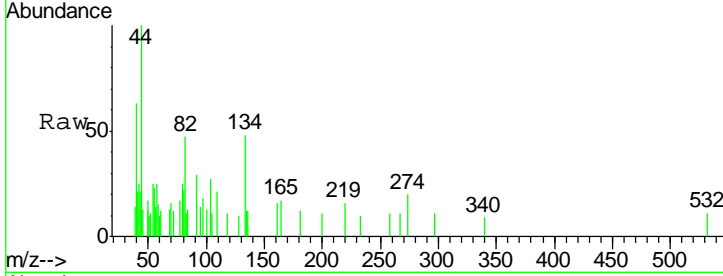




#20  
 Nitrobenzene  
 Concen: 0.01 ng/ul  
 RT: 9.22 min Scan# 1086  
 Delta R.T. -0.00 min  
 Lab File: BG018408.D  
 Acq: 12 Aug 2015 21:44

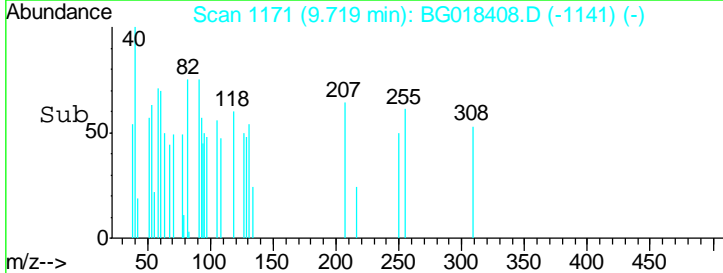
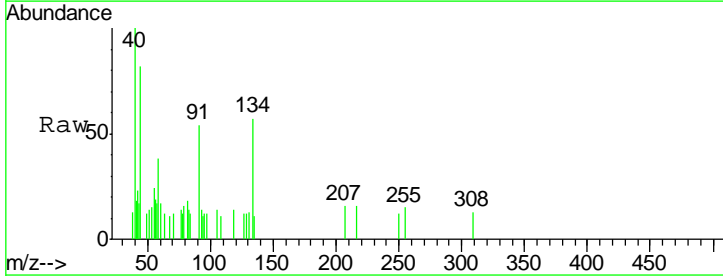
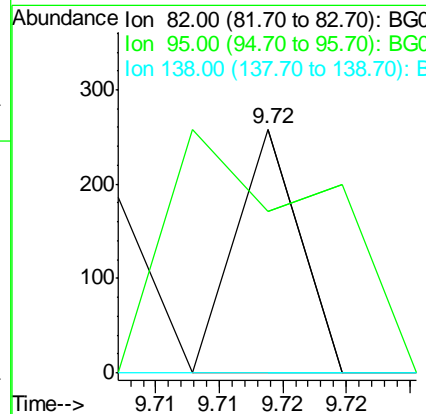
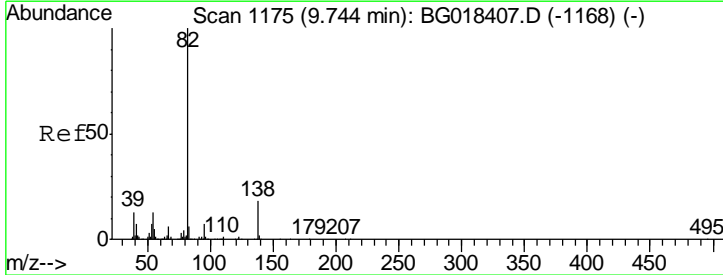
**Instrument :**  
 BNA\_M  
**ClientSampled :**  
 MDL-BLK-S

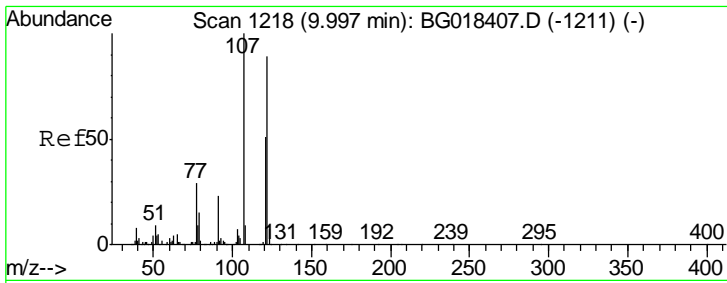
| Tgt Ion | Resp | Lower | Upper |
|---------|------|-------|-------|
| 77      | 100  |       |       |
| 123     | 0.0  | 32.8  | 49.2# |
| 65      | 0.0  | 12.2  | 18.2# |



#21  
 Isophorone  
 Concen: 0.01 ng/ul  
 RT: 9.72 min Scan# 1171  
 Delta R.T. -0.03 min  
 Lab File: BG018408.D  
 Acq: 12 Aug 2015 21:44

| Tgt Ion | Resp | Lower | Upper |
|---------|------|-------|-------|
| 82      | 100  |       |       |
| 95      | 66.3 | 5.2   | 7.8#  |
| 138     | 0.0  | 13.8  | 20.8# |

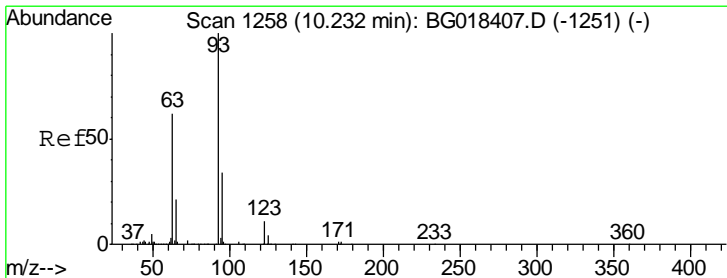
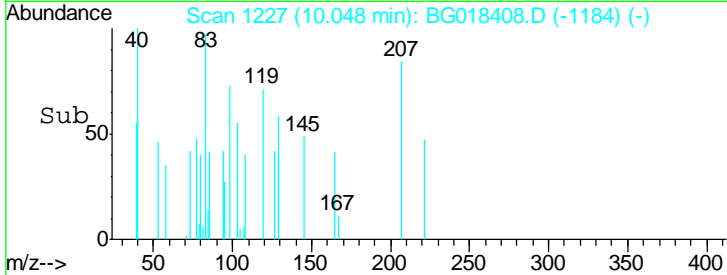
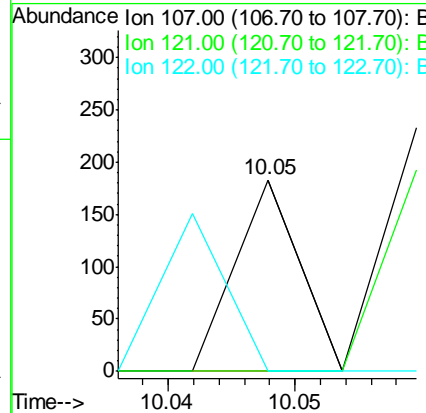
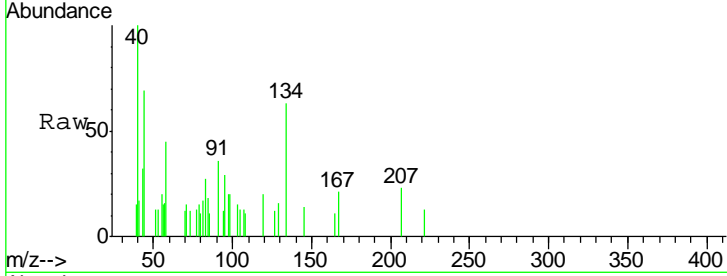




#24  
 2,4-Dimethylphenol  
 Concen: 0.01 ng/ul  
 RT: 10.05 min Scan# 1227  
 Delta R.T. 0.05 min  
 Lab File: BG018408.D  
 Acq: 12 Aug 2015 21:44

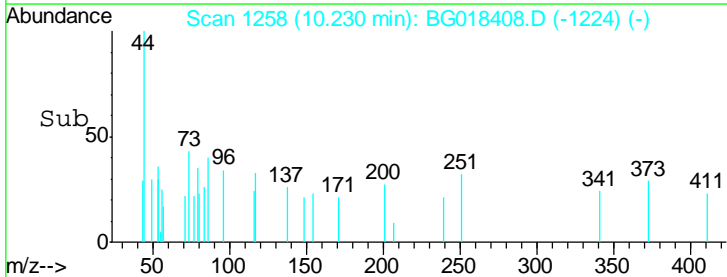
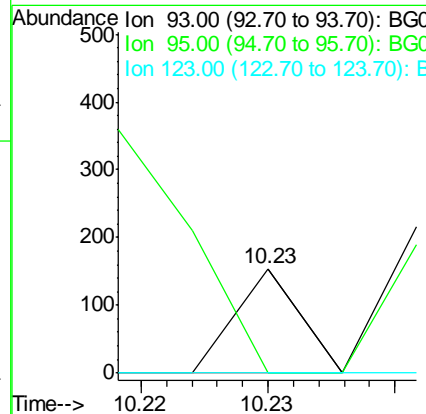
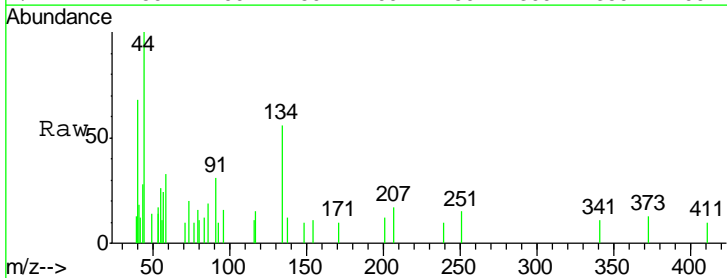
Instrument :  
 BNA\_M  
 ClientSampled :  
 MDL-BLK-S

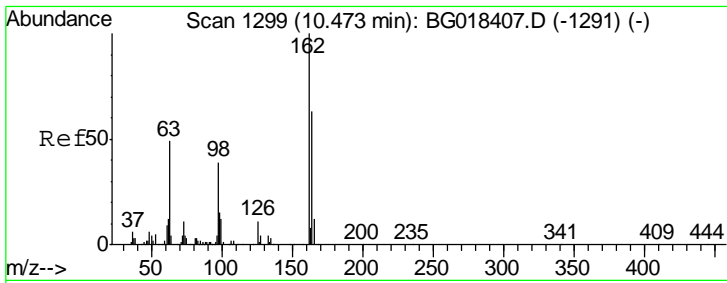
| Tgt Ion | Resp | Lower | Upper  |
|---------|------|-------|--------|
| 107     | 100  |       |        |
| 121     | 0.0  | 41.3  | 61.9#  |
| 122     | 0.0  | 71.9  | 107.9# |



#25  
 Bis(2-Chloroethoxy)methane  
 Concen: 0.01 ng/ul  
 RT: 10.23 min Scan# 1258  
 Delta R.T. -0.00 min  
 Lab File: BG018408.D  
 Acq: 12 Aug 2015 21:44

| Tgt Ion | Resp | Lower | Upper |
|---------|------|-------|-------|
| 93      | 100  |       |       |
| 95      | 0.0  | 24.1  | 36.1# |
| 123     | 0.0  | 8.9   | 13.3# |

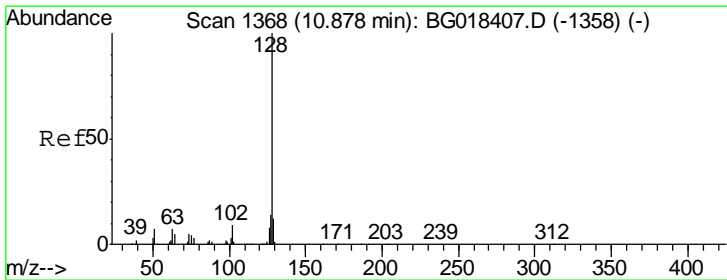
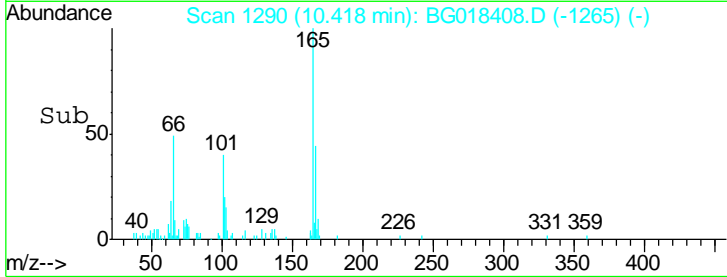
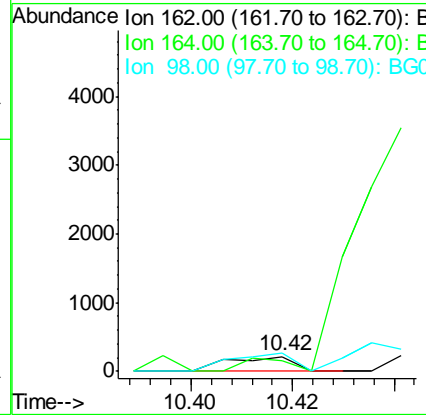
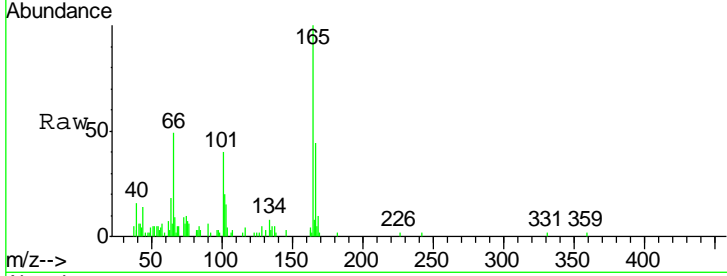




#27  
 2,4-Dichlorophenol  
 Concen: 0.03 ng/ul  
 RT: 10.42 min Scan# 1290  
 Delta R.T. -0.06 min  
 Lab File: BG018408.D  
 Acq: 12 Aug 2015 21:44

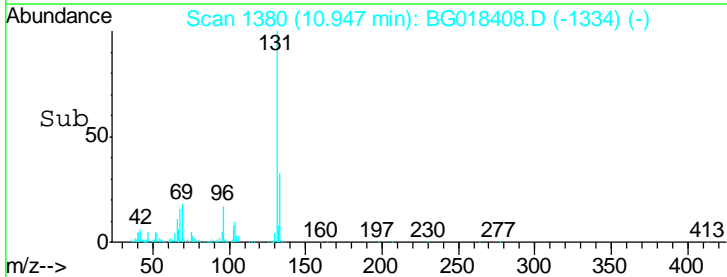
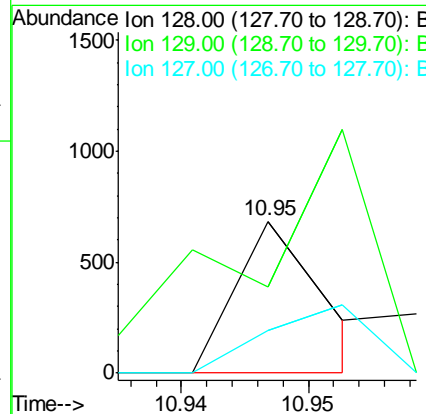
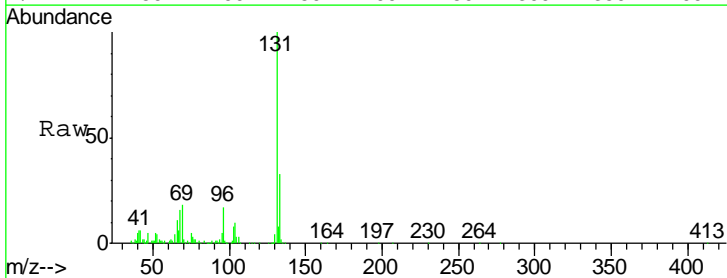
Instrument :  
 BNA\_M  
 ClientSampled :  
 MDL-BLK-S

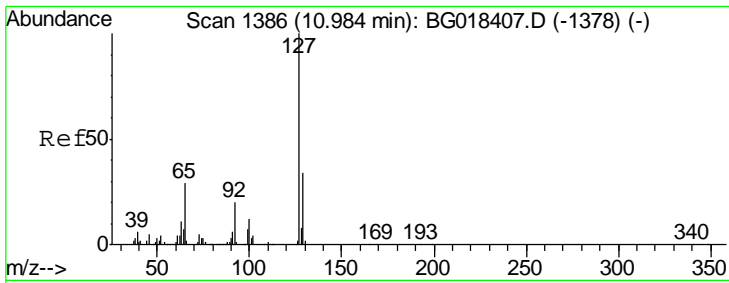
| Tgt Ion | Resp  | Lower | Upper |
|---------|-------|-------|-------|
| 162     | 100   |       |       |
| 164     | 71.4  | 51.7  | 77.5  |
| 98      | 122.1 | 30.4  | 45.6# |



#28  
 Naphthalene  
 Concen: 0.01 ng/ul  
 RT: 10.95 min Scan# 1380  
 Delta R.T. 0.07 min  
 Lab File: BG018408.D  
 Acq: 12 Aug 2015 21:44

| Tgt Ion | Resp | Lower | Upper |
|---------|------|-------|-------|
| 128     | 100  |       |       |
| 129     | 56.4 | 9.6   | 14.4# |
| 127     | 28.3 | 10.5  | 15.7# |

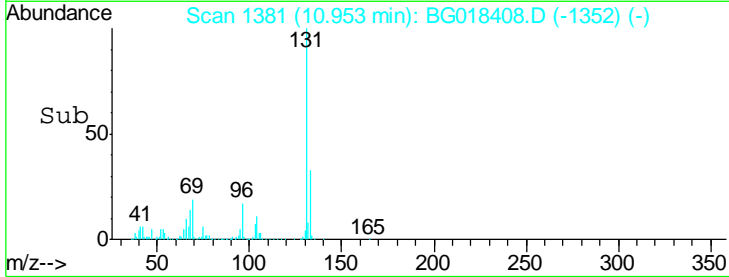
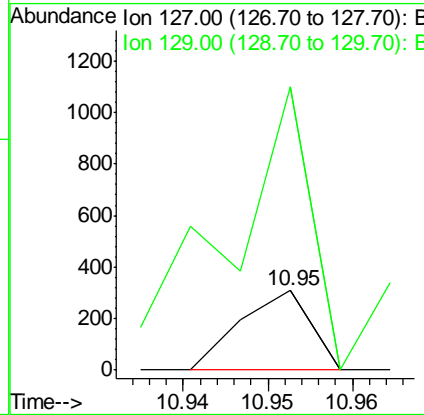
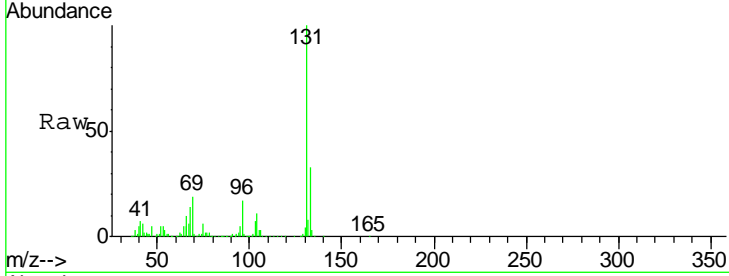




#30  
 4-Chloroaniline  
 Concen: 0.02 ng/ul  
 RT: 10.95 min Scan# 1381  
 Delta R.T. -0.03 min  
 Lab File: BG018408.D  
 Acq: 12 Aug 2015 21:44

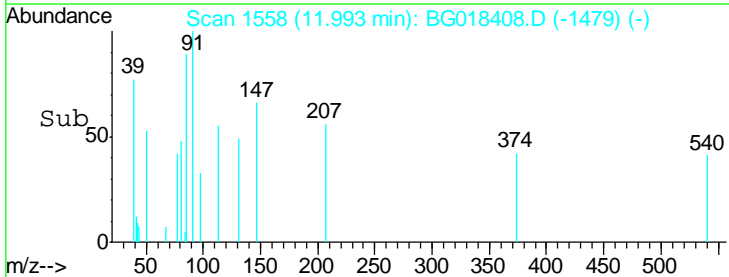
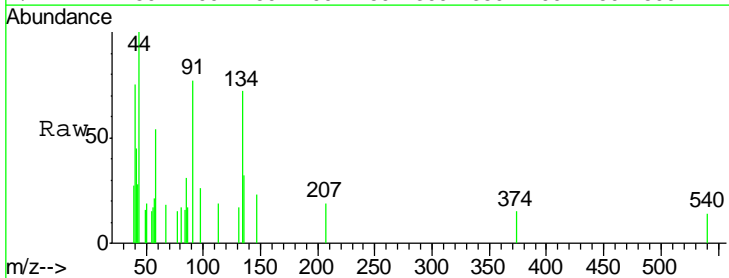
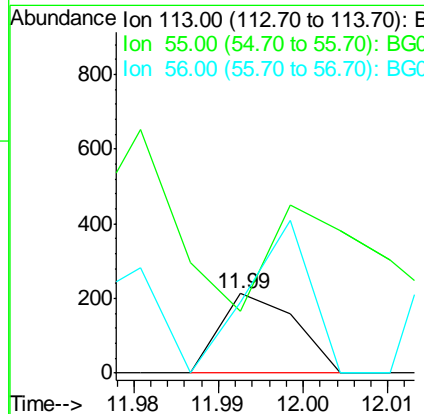
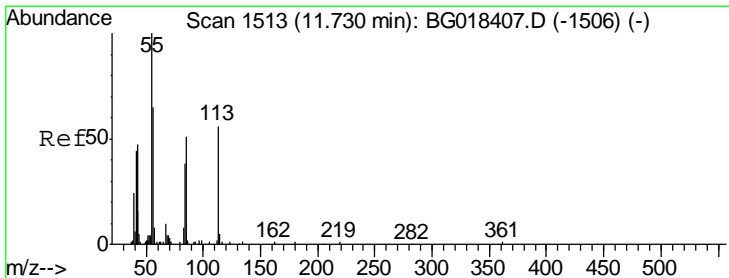
Instrument :  
 BNA\_M  
 ClientSampled :  
 MDL-BLK-S

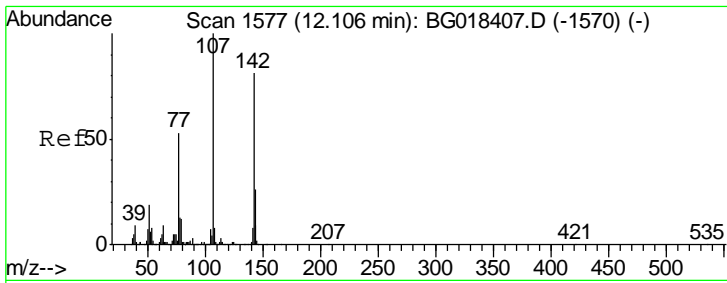
Tgt Ion:127 Resp: 177  
 Ion Ratio Lower Upper  
 127 100  
 129 355.3 26.7 40.1#



#32  
 Caprolactam  
 Concen: 0.05 ng/ul  
 RT: 11.99 min Scan# 1558  
 Delta R.T. 0.26 min  
 Lab File: BG018408.D  
 Acq: 12 Aug 2015 21:44

Tgt Ion:113 Resp: 131  
 Ion Ratio Lower Upper  
 113 100  
 55 77.9 124.2 186.4#  
 56 88.7 98.2 147.4#

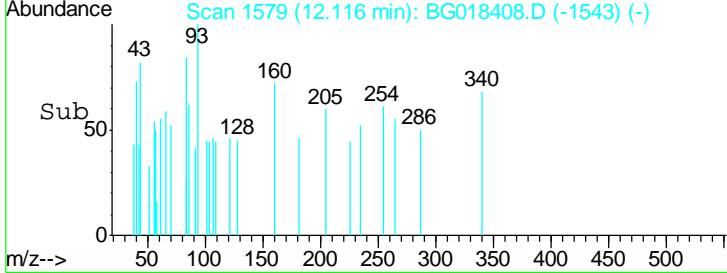
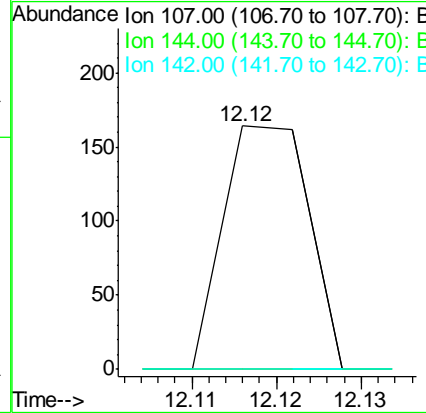
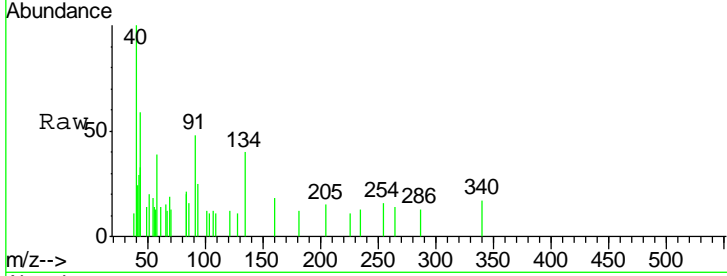




#33  
 4-Chloro-3-methylphenol  
 Concen: 0.02 ng/ul  
 RT: 12.12 min Scan# 1579  
 Delta R.T. 0.01 min  
 Lab File: BG018408.D  
 Acq: 12 Aug 2015 21:44

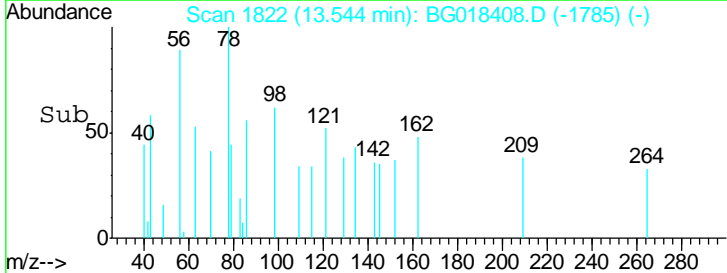
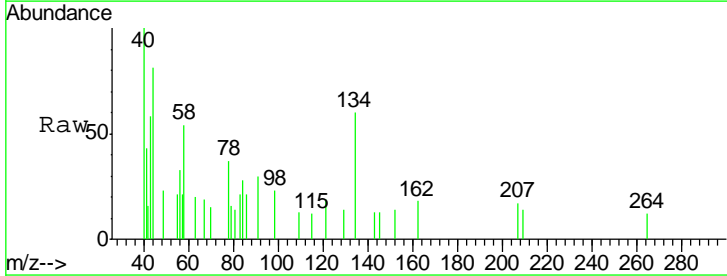
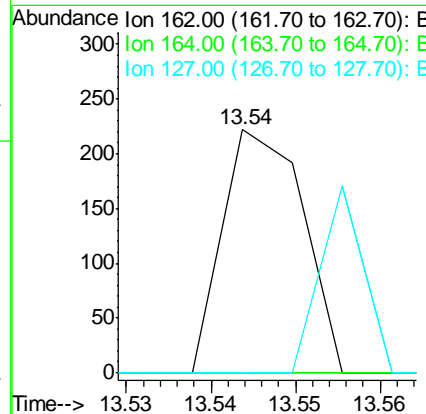
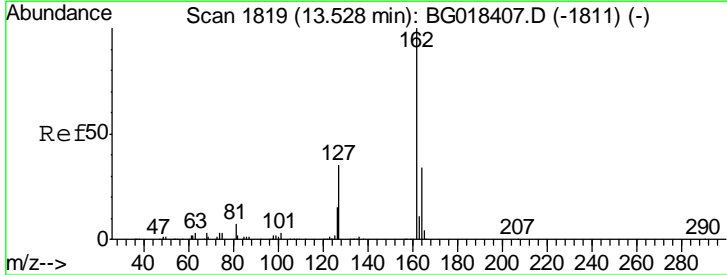
Instrument :  
 BNA\_M  
 ClientSampled :  
 MDL-BLK-S

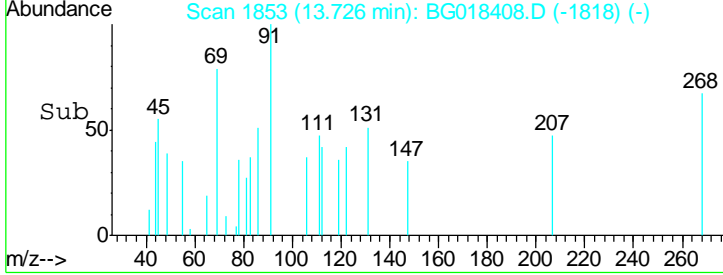
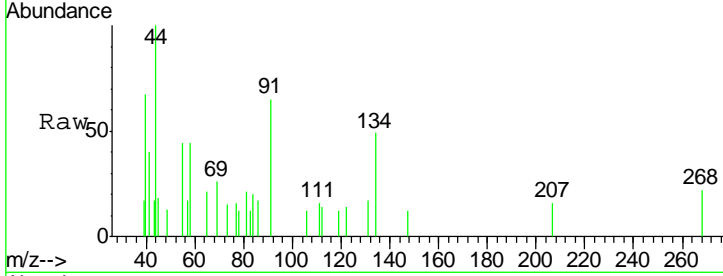
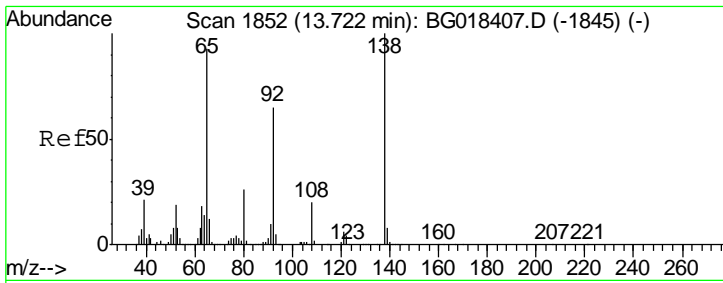
| Tgt Ion | Resp | Lower | Upper |
|---------|------|-------|-------|
| 107     | 115  |       |       |
| 144     | 0.0  | 21.4  | 32.2# |
| 142     | 0.0  | 66.0  | 99.0# |



#42  
 2-Chloronaphthalene  
 Concen: 0.01 ng/ul  
 RT: 13.54 min Scan# 1822  
 Delta R.T. 0.02 min  
 Lab File: BG018408.D  
 Acq: 12 Aug 2015 21:44

| Tgt Ion | Resp | Lower | Upper |
|---------|------|-------|-------|
| 162     | 146  |       |       |
| 164     | 0.0  | 24.8  | 37.2# |
| 127     | 0.0  | 30.3  | 45.5# |

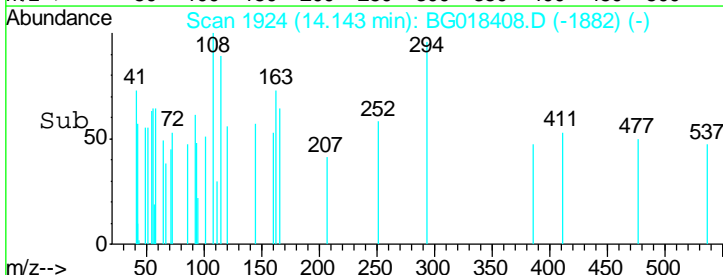
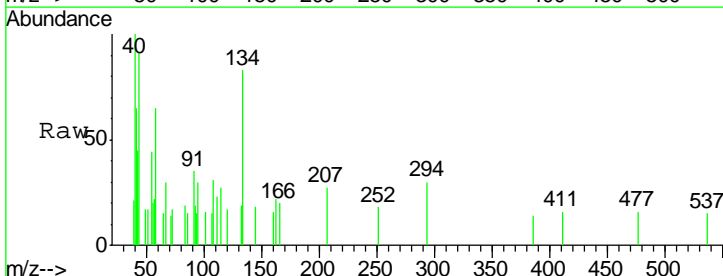
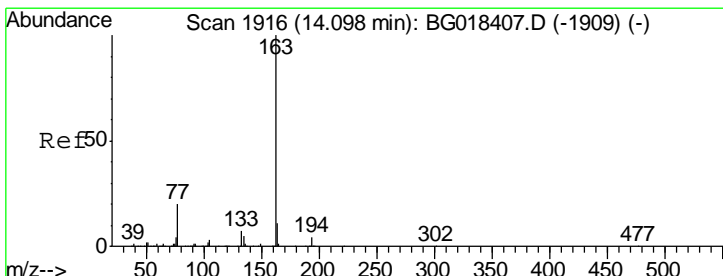
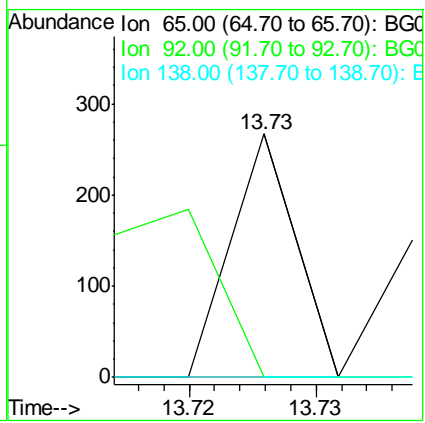




#43  
 2-Nitroaniline  
 Concen: 0.02 ng/ul  
 RT: 13.73 min Scan# 1853  
 Delta R.T. 0.00 min  
 Lab File: BG018408.D  
 Acq: 12 Aug 2015 21:44

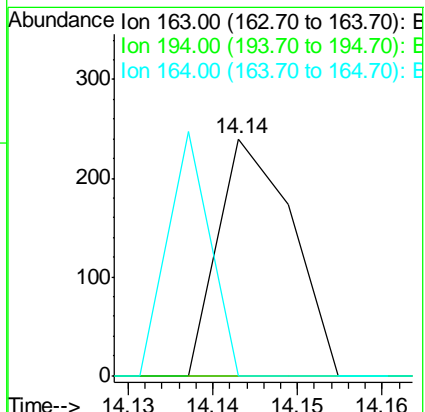
Instrument :  
 BNA\_M  
 ClientSampled :  
 MDL-BLK-S

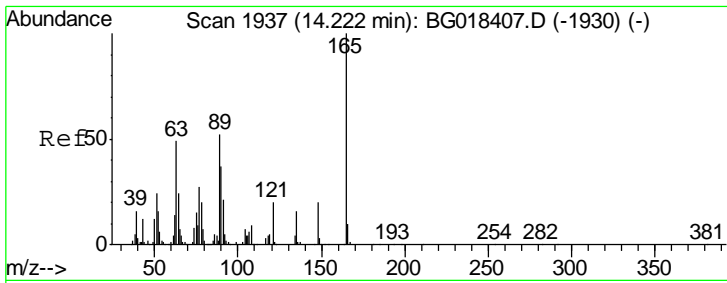
| Tgt Ion | Resp | Lower | Upper  |
|---------|------|-------|--------|
| 65      | 100  |       |        |
| 92      | 0.0  | 51.1  | 76.7#  |
| 138     | 0.0  | 75.1  | 112.7# |



#45  
 Dimethylphthalate  
 Concen: 0.01 ng/ul  
 RT: 14.14 min Scan# 1924  
 Delta R.T. 0.04 min  
 Lab File: BG018408.D  
 Acq: 12 Aug 2015 21:44

| Tgt Ion | Resp | Lower | Upper |
|---------|------|-------|-------|
| 163     | 100  |       |       |
| 194     | 0.0  | 2.9   | 4.3#  |
| 164     | 0.0  | 7.7   | 11.5# |

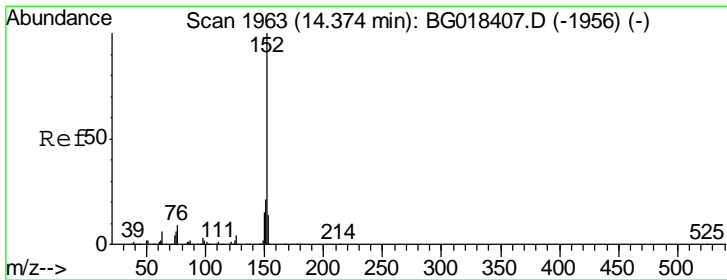
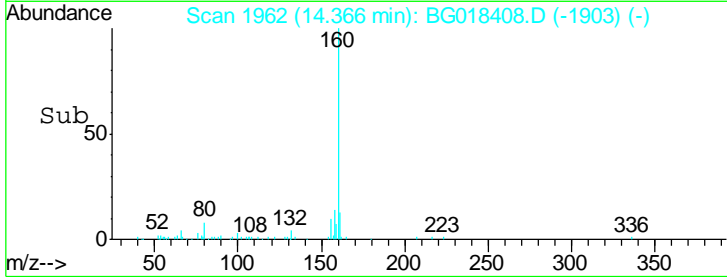
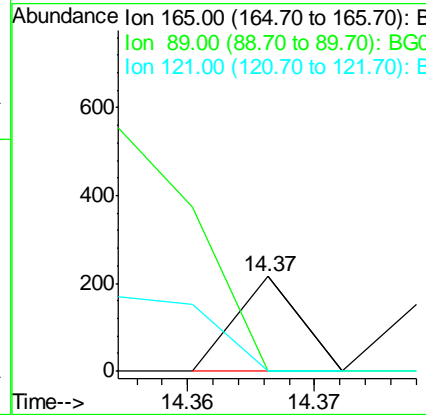
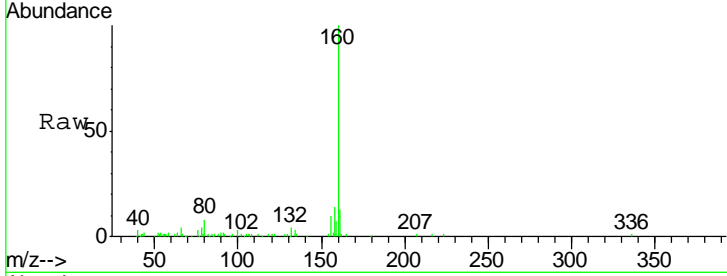




#46  
 2,6-Dinitrotoluene  
 Concen: 0.02 ng/ul  
 RT: 14.37 min Scan# 1962  
 Delta R.T. 0.14 min  
 Lab File: BG018408.D  
 Acq: 12 Aug 2015 21:44

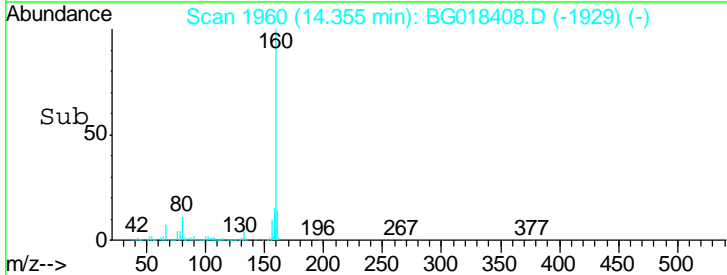
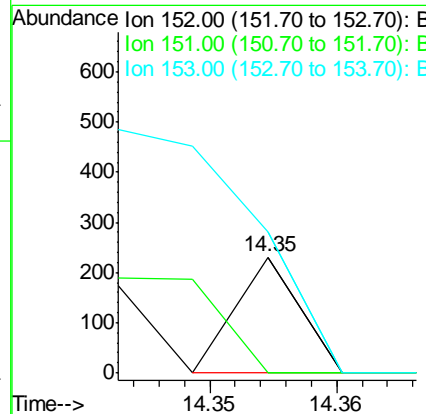
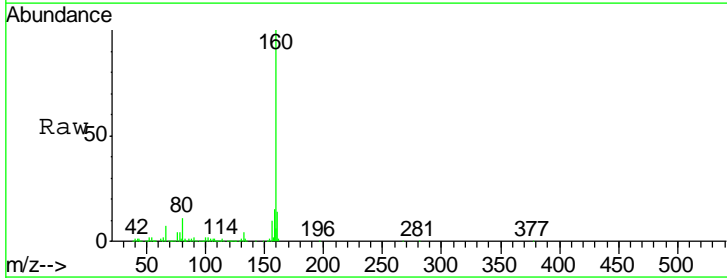
Instrument :  
 BNA\_M  
 ClientSampled :  
 MDL-BLK-S

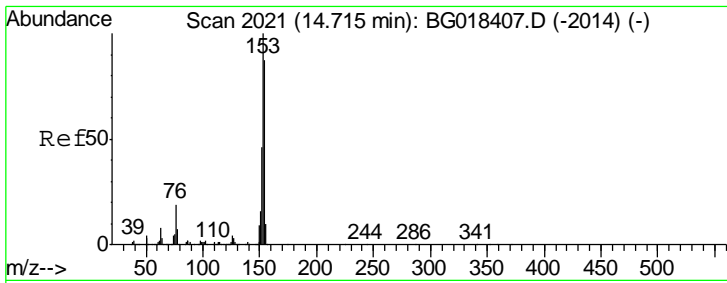
| Tgt Ion | Resp | Lower | Upper |
|---------|------|-------|-------|
| 165     | 100  |       |       |
| 89      | 0.0  | 50.2  | 75.2# |
| 121     | 0.0  | 19.4  | 29.2# |



#48  
 Acenaphthylene  
 Concen: 0.00 ng/ul  
 RT: 14.35 min Scan# 1960  
 Delta R.T. -0.02 min  
 Lab File: BG018408.D  
 Acq: 12 Aug 2015 21:44

| Tgt Ion | Resp  | Lower | Upper |
|---------|-------|-------|-------|
| 152     | 100   |       |       |
| 151     | 0.0   | 15.4  | 23.2# |
| 153     | 122.2 | 10.8  | 16.2# |

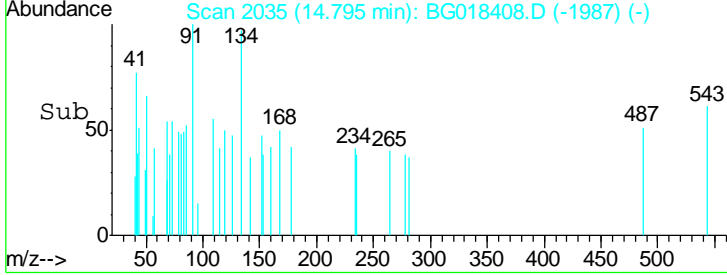
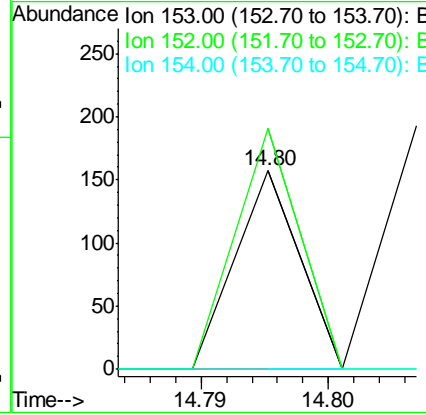
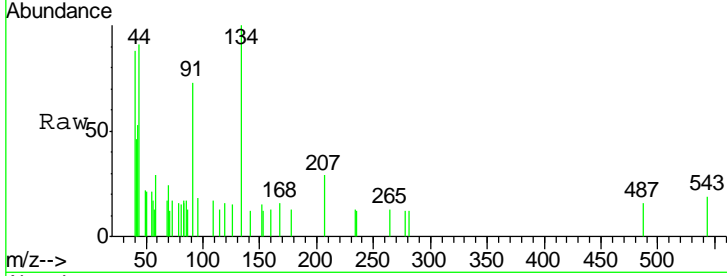




#50  
 Acenaphthene  
 Concen: 0.00 ng/ul  
 RT: 14.80 min Scan# 2035  
 Delta R.T. 0.08 min  
 Lab File: BG018408.D  
 Acq: 12 Aug 2015 21:44

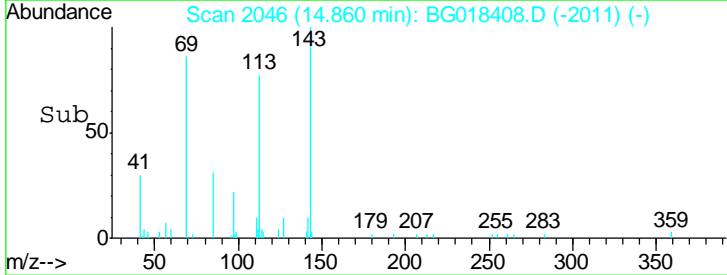
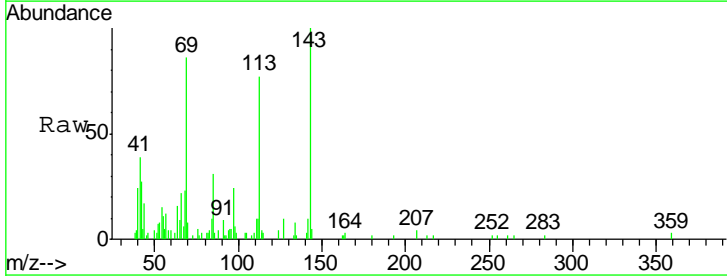
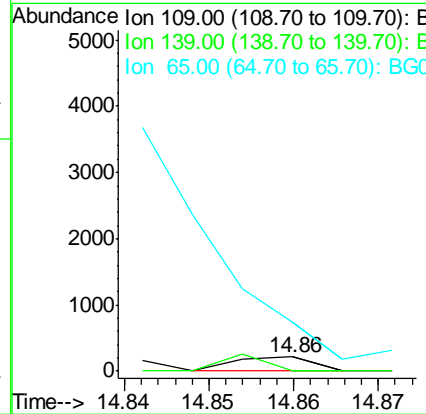
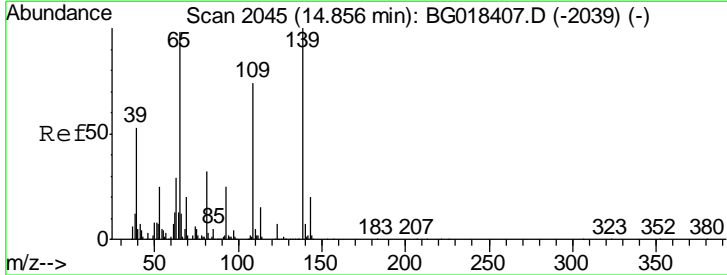
Instrument :  
 BNA\_M  
 ClientSampled :  
 MDL-BLK-S

| Tgt Ion | Resp  | Lower | Upper  |
|---------|-------|-------|--------|
| 153     | 100   |       |        |
| 152     | 121.7 | 38.2  | 57.4#  |
| 154     | 0.0   | 68.6  | 103.0# |

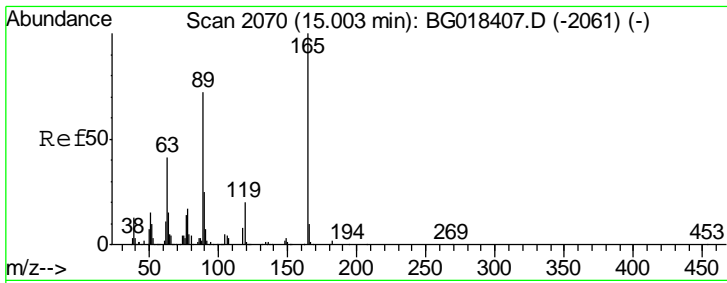


#53  
 4-Nitrophenol  
 Concen: 0.04 ng/ul  
 RT: 14.86 min Scan# 2046  
 Delta R.T. 0.00 min  
 Lab File: BG018408.D  
 Acq: 12 Aug 2015 21:44

| Tgt Ion | Resp  | Lower | Upper  |
|---------|-------|-------|--------|
| 109     | 100   |       |        |
| 139     | 0.0   | 111.3 | 166.9# |
| 65      | 337.3 | 105.3 | 157.9# |



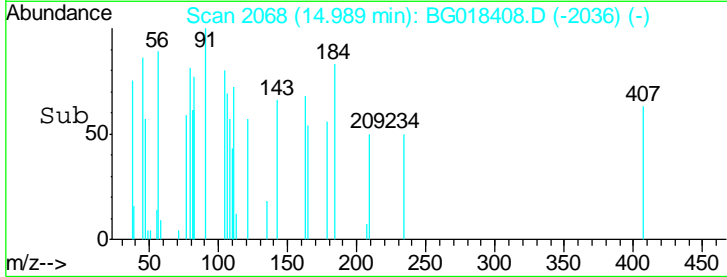
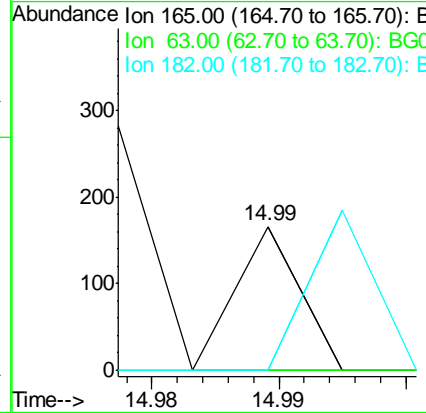
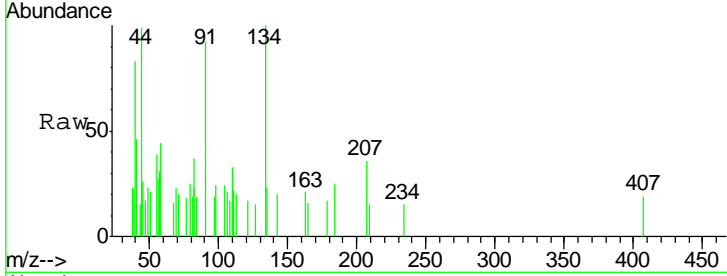




#55  
 2,4-Dinitrotoluene  
 Concen: 0.01 ng/ul  
 RT: 14.99 min Scan# 2068  
 Delta R.T. -0.01 min  
 Lab File: BG018408.D  
 Acq: 12 Aug 2015 21:44

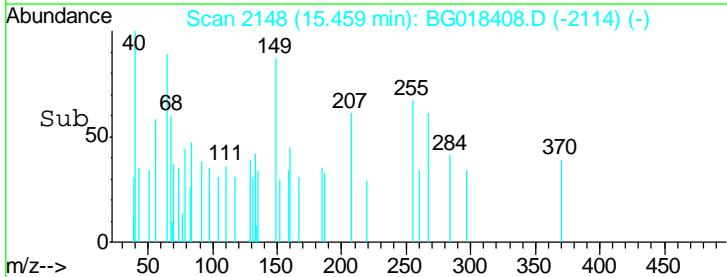
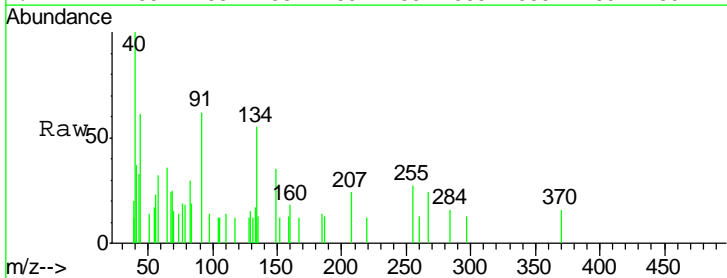
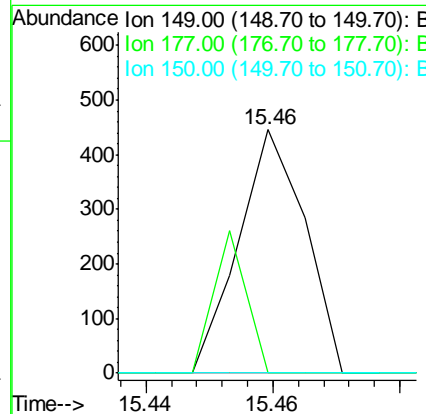
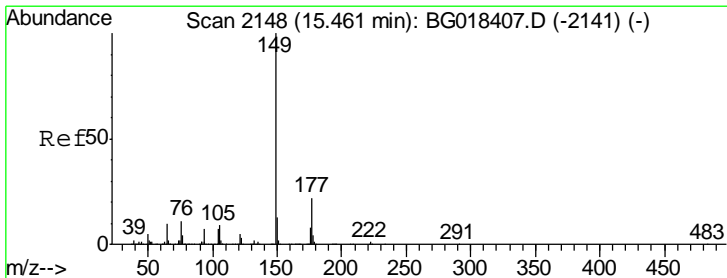
Instrument :  
 BNA\_M  
 ClientSampled :  
 MDL-BLK-S

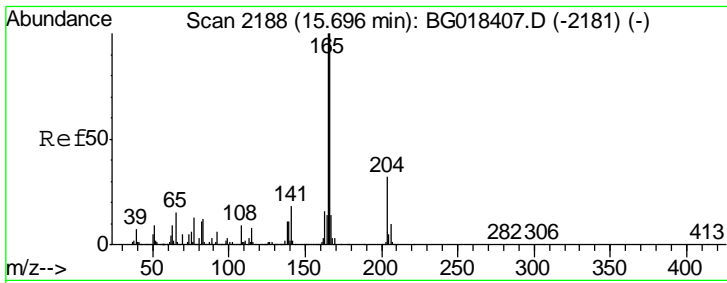
| Tgt Ion | Resp | Lower | Upper |
|---------|------|-------|-------|
| 165     | 100  |       |       |
| 63      | 0.0  | 36.7  | 55.1# |
| 182     | 0.0  | 2.2   | 3.2#  |



#57  
 Diethylphthalate  
 Concen: 0.01 ng/ul  
 RT: 15.46 min Scan# 2148  
 Delta R.T. -0.00 min  
 Lab File: BG018408.D  
 Acq: 12 Aug 2015 21:44

| Tgt Ion | Resp | Lower | Upper |
|---------|------|-------|-------|
| 149     | 100  |       |       |
| 177     | 0.0  | 18.2  | 27.4# |
| 150     | 0.0  | 9.7   | 14.5# |

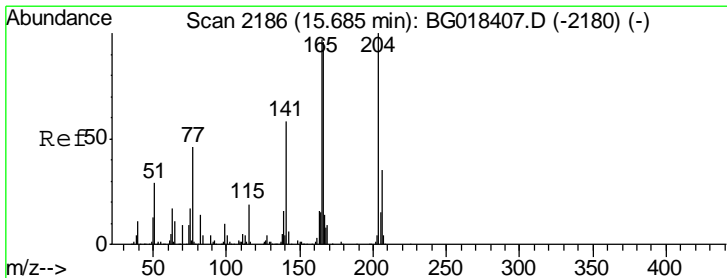
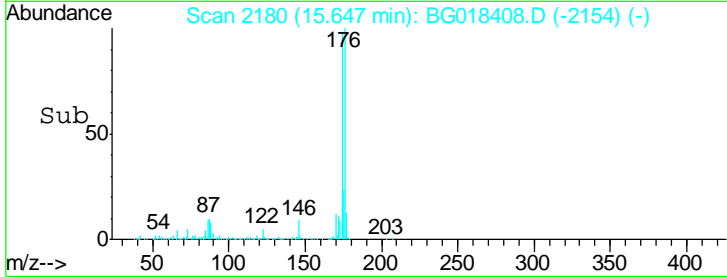
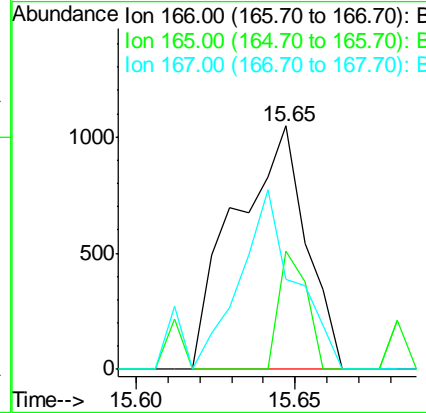
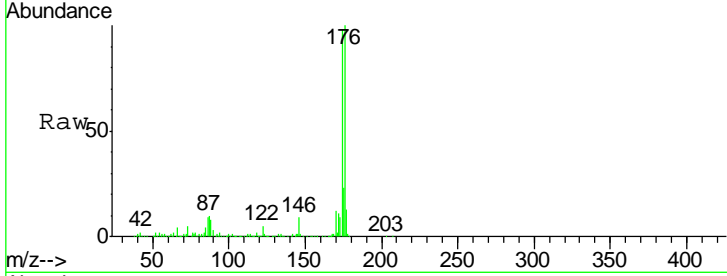




#59  
 Fluorene  
 Concen: 0.07 ng/ul  
 RT: 15.65 min Scan# 2180  
 Delta R.T. -0.05 min  
 Lab File: BG018408.D  
 Acq: 12 Aug 2015 21:44

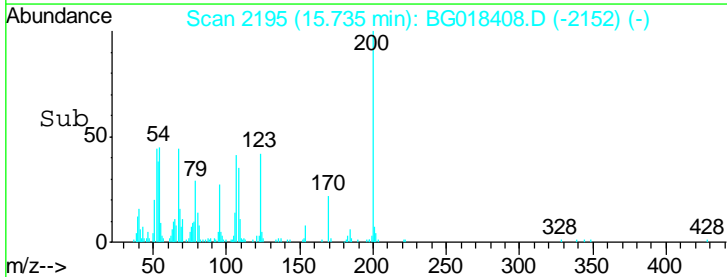
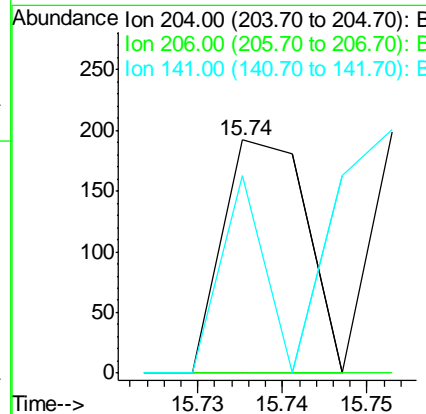
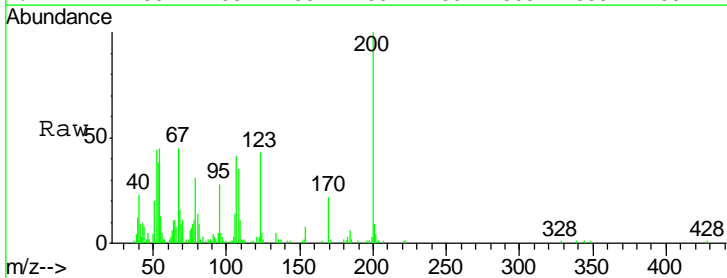
Instrument :  
 BNA\_M  
 ClientSampled :  
 MDL-BLK-S

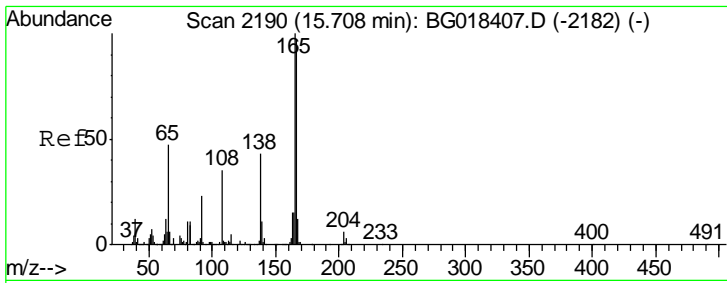
| Tgt Ion | Resp | Lower | Upper  |
|---------|------|-------|--------|
| 166     | 1632 |       |        |
| 166     | 100  |       |        |
| 165     | 48.5 | 82.6  | 124.0# |
| 167     | 37.1 | 11.4  | 17.0#  |



#60  
 4-Chlorophenyl-phenylether  
 Concen: 0.01 ng/ul  
 RT: 15.74 min Scan# 2195  
 Delta R.T. 0.05 min  
 Lab File: BG018408.D  
 Acq: 12 Aug 2015 21:44

| Tgt Ion | Resp | Lower | Upper |
|---------|------|-------|-------|
| 204     | 132  |       |       |
| 204     | 100  |       |       |
| 206     | 0.0  | 27.1  | 40.7# |
| 141     | 84.9 | 47.1  | 70.7# |

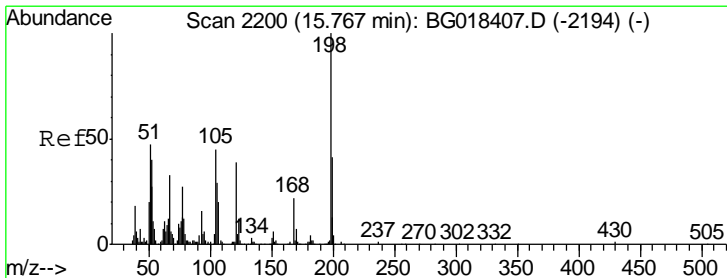
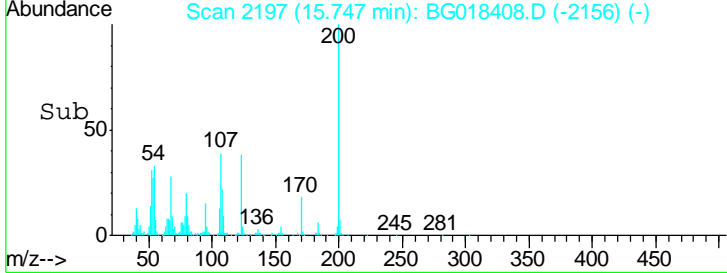
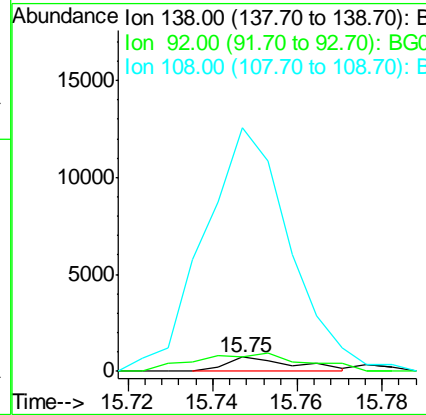
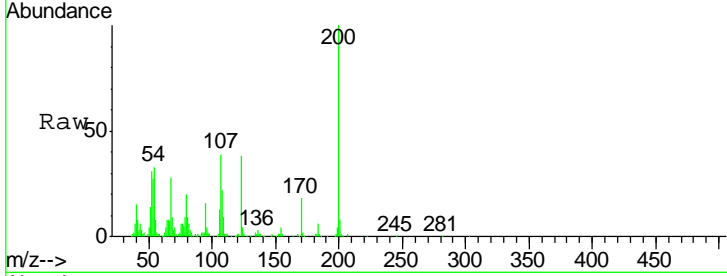




#61  
 4-Nitroaniline  
 Concen: 0.17 ng/ul  
 RT: 15.75 min Scan# 2197  
 Delta R.T. 0.04 min  
 Lab File: BG018408.D  
 Acq: 12 Aug 2015 21:44

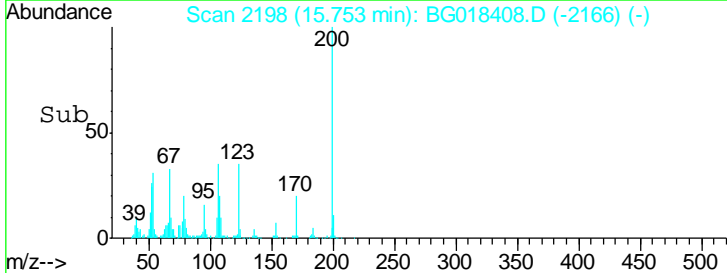
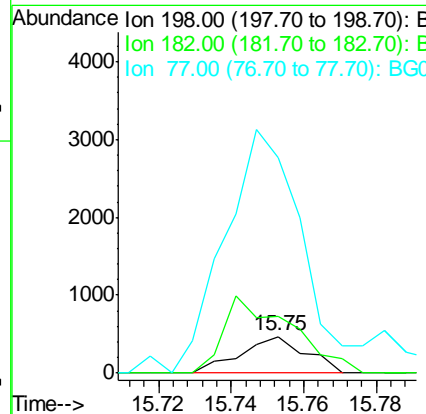
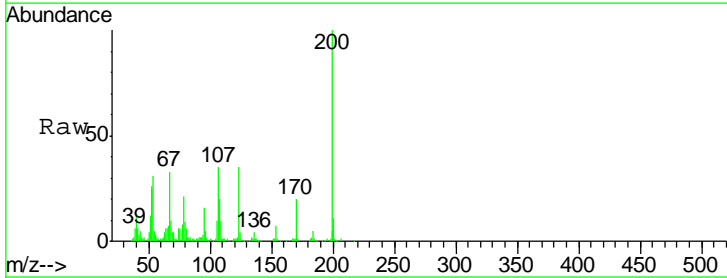
Instrument :  
 BNA\_M  
 ClientSampled :  
 MDL-BLK-S

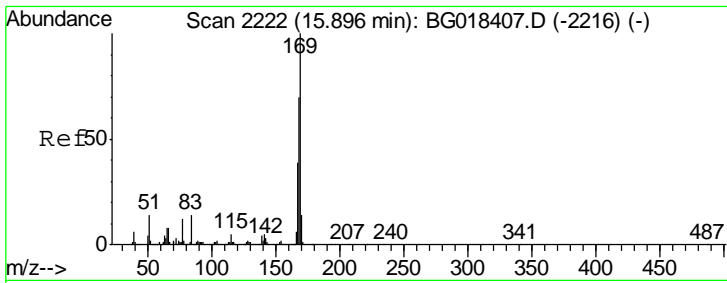
Tgt Ion:138 Resp: 823  
 Ion Ratio Lower Upper  
 138 100  
 92 106.1 44.0 66.0#  
 108 1732.6 64.6 97.0#



#64  
 4,6-Dinitro-2-methylphenol  
 Concen: 0.17 ng/ul  
 RT: 15.75 min Scan# 2198  
 Delta R.T. -0.01 min  
 Lab File: BG018408.D  
 Acq: 12 Aug 2015 21:44

Tgt Ion:198 Resp: 583  
 Ion Ratio Lower Upper  
 198 100  
 182 155.6 3.4 5.0#  
 77 591.5 22.4 33.6#

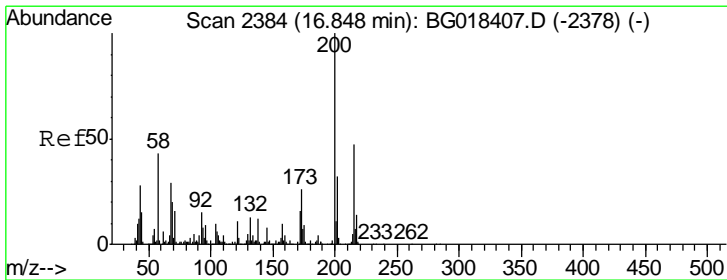
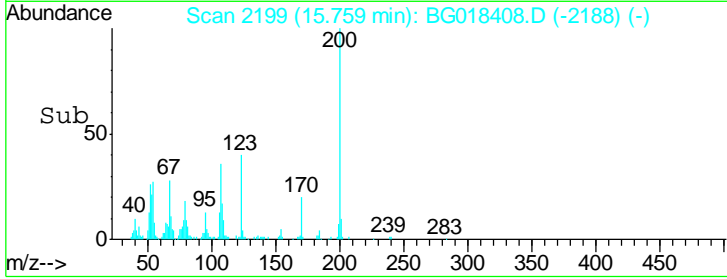
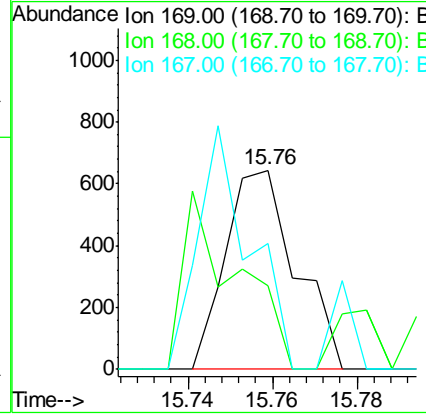
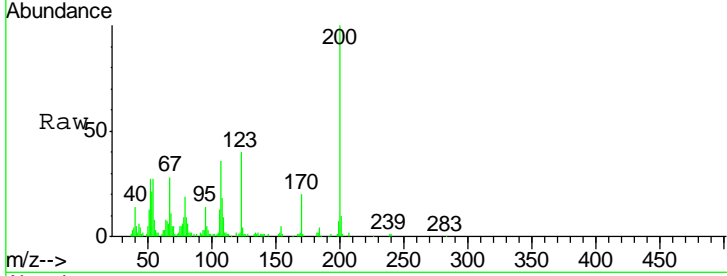




#65  
 N-Nitrosodiphenylamine  
 Concen: 0.04 ng/ul  
 RT: 15.76 min Scan# 2199  
 Delta R.T. -0.14 min  
 Lab File: BG018408.D  
 Acq: 12 Aug 2015 21:44

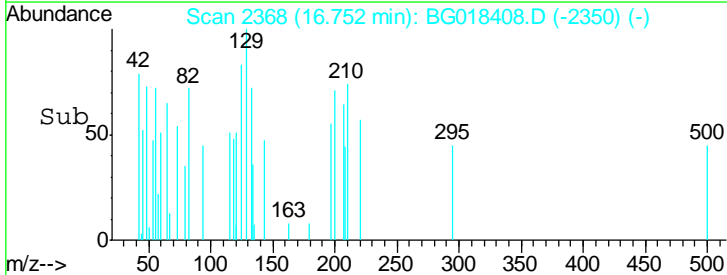
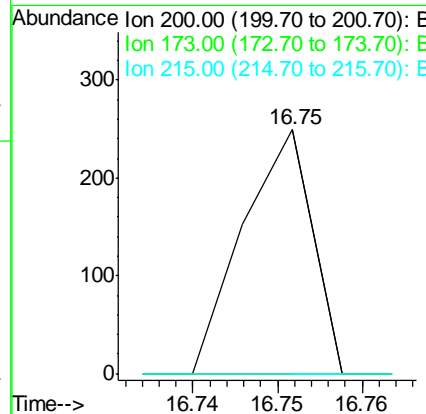
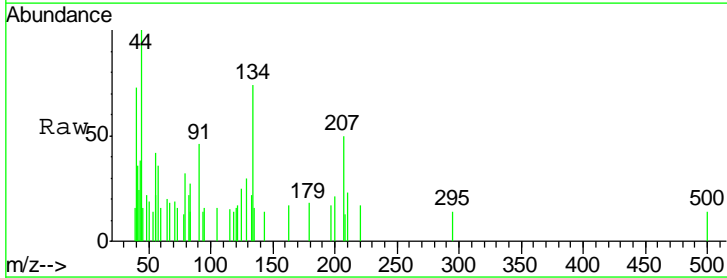
Instrument :  
 BNA\_M  
 ClientSampled :  
 MDL-BLK-S

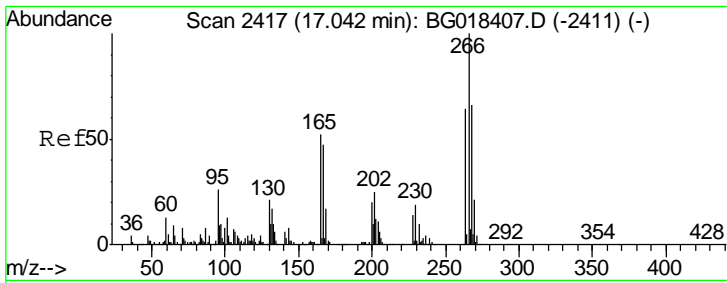
| Tgt Ion | Resp | Lower | Upper |
|---------|------|-------|-------|
| 169     | 100  |       |       |
| 168     | 41.7 | 60.2  | 90.2# |
| 167     | 62.9 | 33.4  | 50.2# |



#68  
 Atrazine  
 Concen: 0.02 ng/ul  
 RT: 16.75 min Scan# 2368  
 Delta R.T. -0.10 min  
 Lab File: BG018408.D  
 Acq: 12 Aug 2015 21:44

| Tgt Ion | Resp | Lower | Upper |
|---------|------|-------|-------|
| 200     | 100  |       |       |
| 173     | 0.0  | 19.0  | 28.4# |
| 215     | 0.0  | 37.4  | 56.2# |

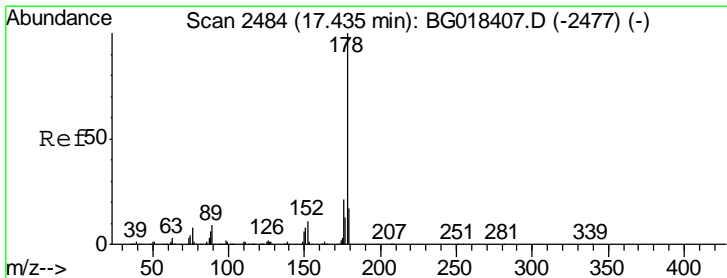
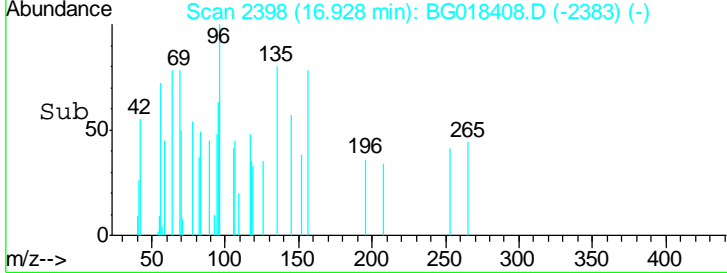
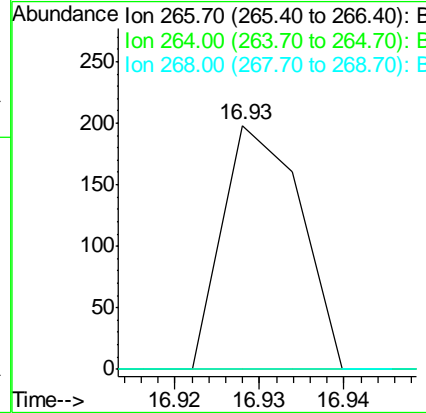
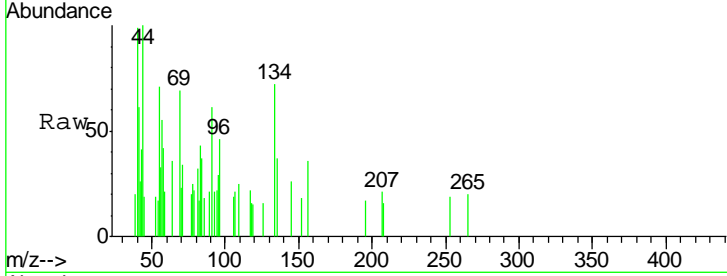




#69  
 Pentachlorophenol  
 Concen: 0.03 ng/ul  
 RT: 16.93 min Scan# 2398  
 Delta R.T. -0.11 min  
 Lab File: BG018408.D  
 Acq: 12 Aug 2015 21:44

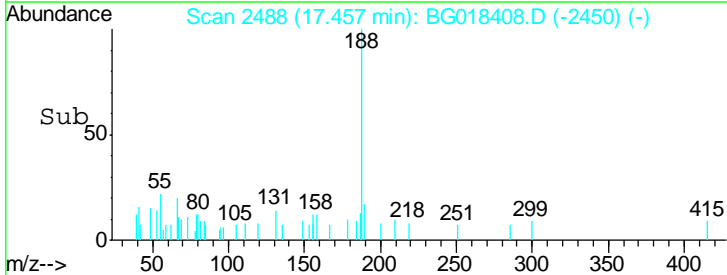
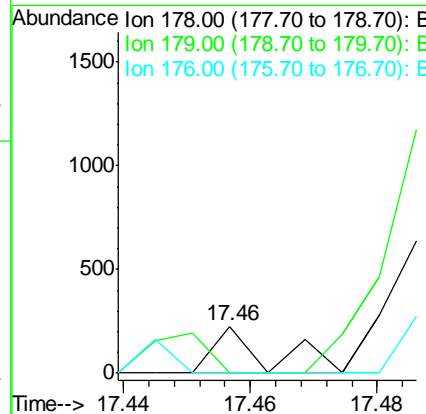
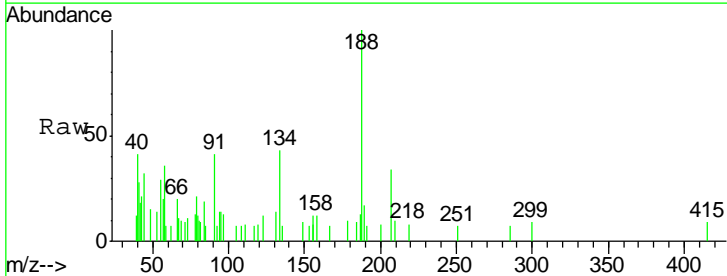
Instrument :  
 BNA\_M  
 ClientSampled :  
 MDL-BLK-S

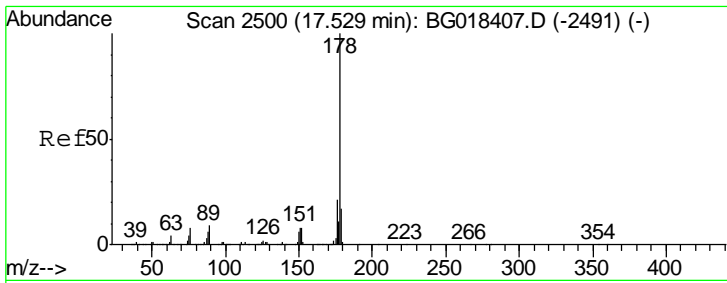
| Tgt Ion | Resp | Lower | Upper |
|---------|------|-------|-------|
| 266     | 100  |       |       |
| 264     | 0.0  | 55.4  | 83.0# |
| 268     | 0.0  | 53.6  | 80.4# |



#70  
 Phenanthrene  
 Concen: 0.00 ng/ul  
 RT: 17.46 min Scan# 2488  
 Delta R.T. 0.02 min  
 Lab File: BG018408.D  
 Acq: 12 Aug 2015 21:44

| Tgt Ion | Resp | Lower | Upper |
|---------|------|-------|-------|
| 178     | 100  |       |       |
| 179     | 0.0  | 13.7  | 20.5# |
| 176     | 0.0  | 16.6  | 24.8# |

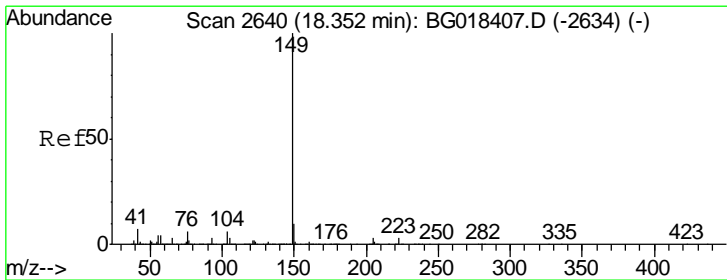
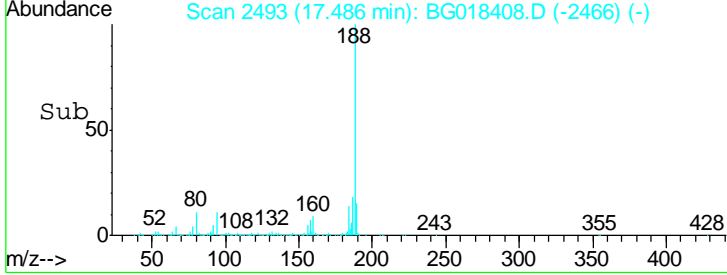
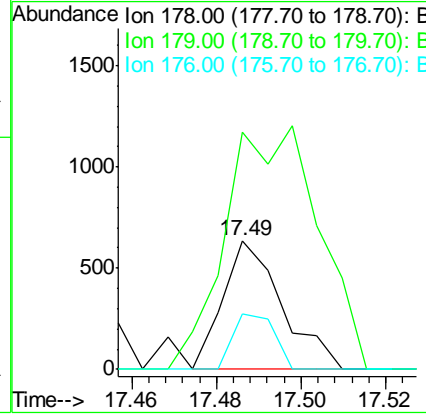
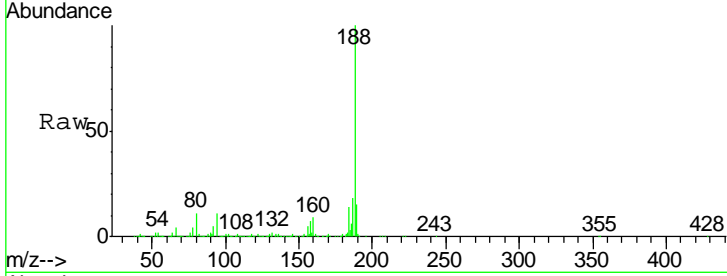




#72  
 Anthracene  
 Concen: 0.02 ng/ul  
 RT: 17.49 min Scan# 2493  
 Delta R.T. -0.04 min  
 Lab File: BG018408.D  
 Acq: 12 Aug 2015 21:44

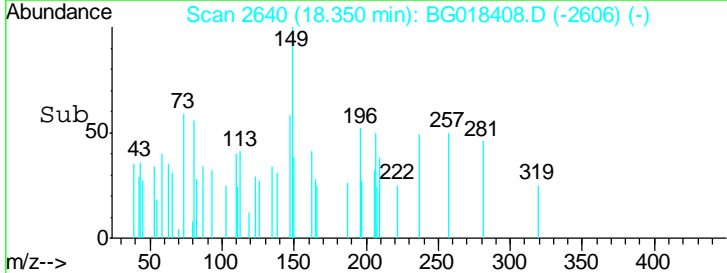
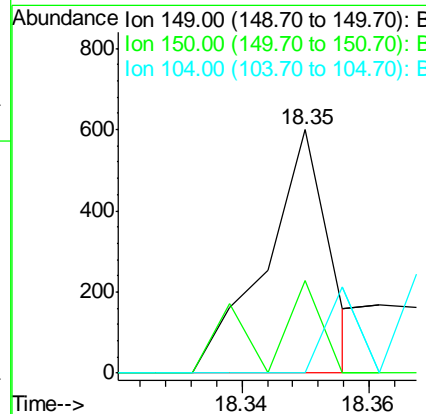
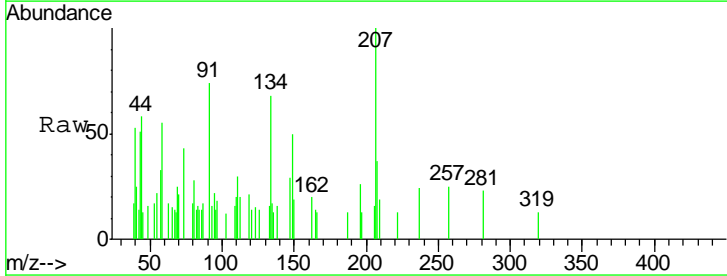
Instrument :  
 BNA\_M  
 ClientSampled :  
 MDL-BLK-S

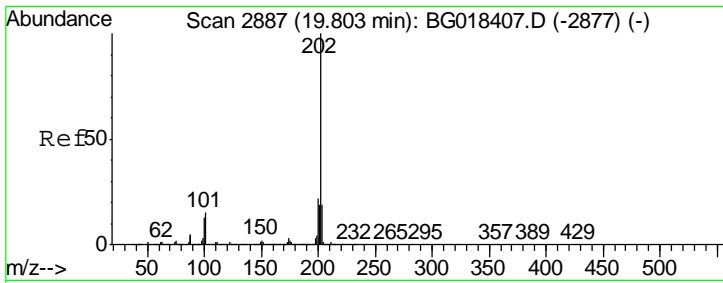
| Tgt Ion | Resp  | Lower | Upper |
|---------|-------|-------|-------|
| 178     | 100   |       |       |
| 179     | 184.9 | 13.0  | 19.4# |
| 176     | 42.7  | 16.0  | 24.0# |



#76  
 Di-n-butylphthalate  
 Concen: 0.01 ng/ul  
 RT: 18.35 min Scan# 2640  
 Delta R.T. -0.00 min  
 Lab File: BG018408.D  
 Acq: 12 Aug 2015 21:44

| Tgt Ion | Resp | Lower | Upper |
|---------|------|-------|-------|
| 149     | 100  |       |       |
| 150     | 38.2 | 7.5   | 11.3# |
| 104     | 0.0  | 4.3   | 6.5#  |

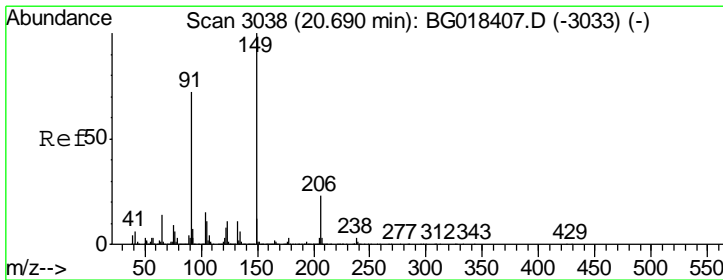
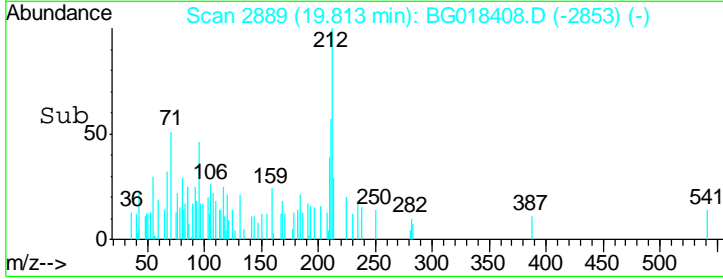
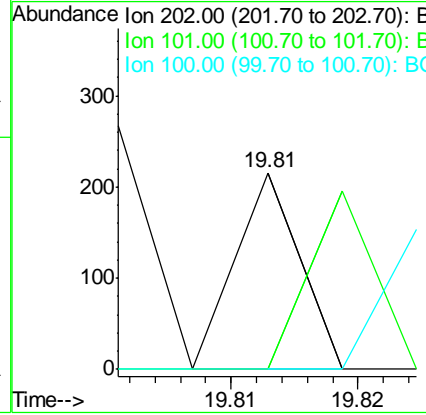
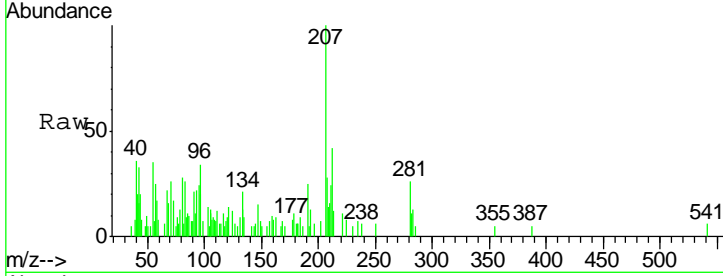




#80  
 Pyrene  
 Concen: 0.00 ng/ul  
 RT: 19.81 min Scan# 2889  
 Delta R.T. 0.01 min  
 Lab File: BG018408.D  
 Acq: 12 Aug 2015 21:44

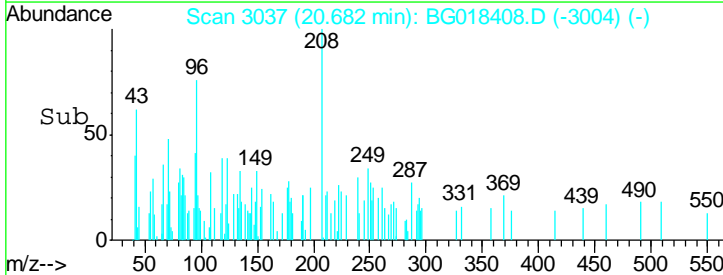
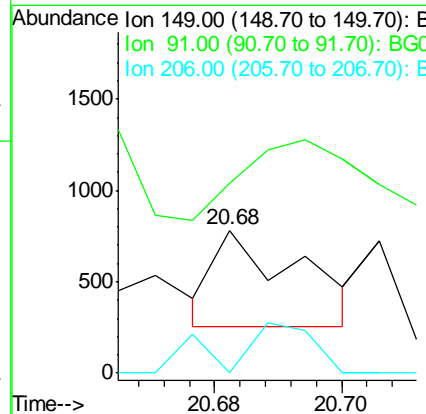
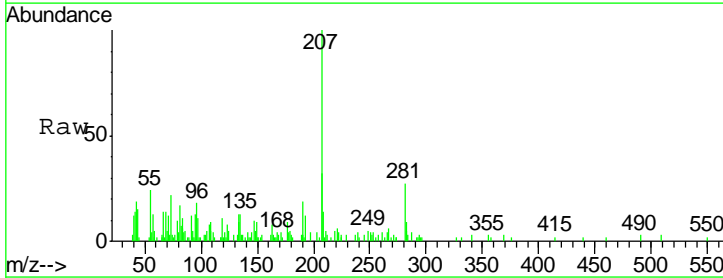
Instrument :  
 BNA\_M  
 ClientSampled :  
 MDL-BLK-S

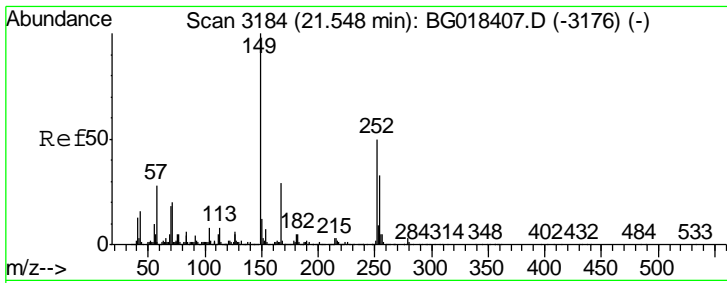
| Tgt Ion | Ratio | Lower | Upper |
|---------|-------|-------|-------|
| 202     | 100   |       |       |
| 101     | 0.0   | 11.0  | 16.4# |
| 100     | 0.0   | 9.8   | 14.6# |



#81  
 Butylbenzylphthalate  
 Concen: 0.03 ng/ul  
 RT: 20.68 min Scan# 3037  
 Delta R.T. -0.01 min  
 Lab File: BG018408.D  
 Acq: 12 Aug 2015 21:44

| Tgt Ion | Ratio | Lower | Upper |
|---------|-------|-------|-------|
| 149     | 100   |       |       |
| 91      | 132.6 | 57.9  | 86.9# |
| 206     | 0.0   | 17.9  | 26.9# |

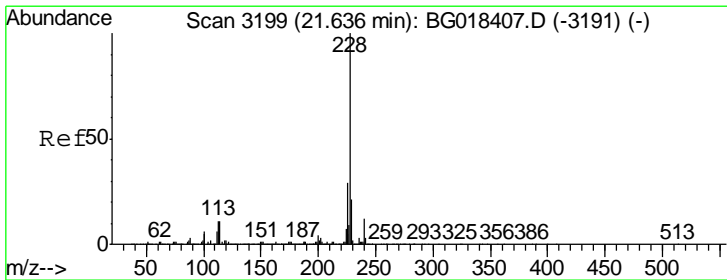
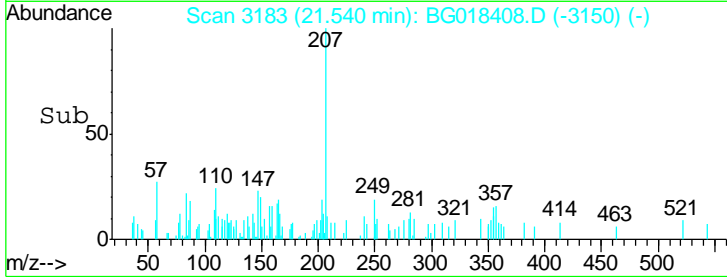
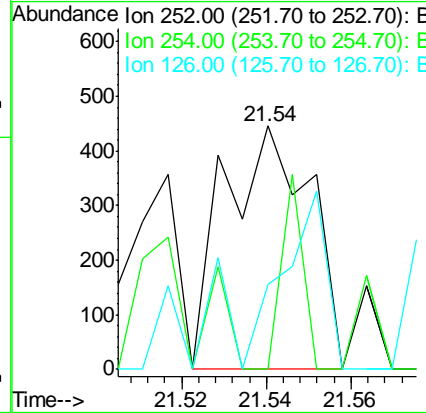
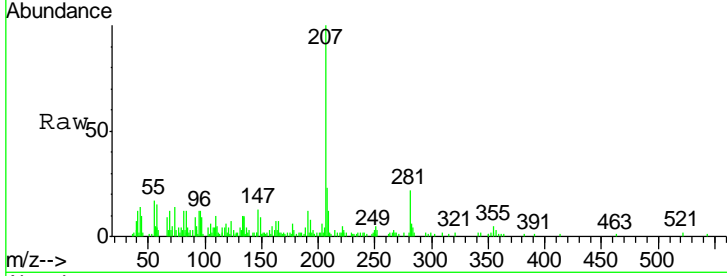




#82  
 3,3'-Dichlorobenzidine  
 Concen: 0.05 ng/ul  
 RT: 21.54 min Scan# 3183  
 Delta R.T. -0.01 min  
 Lab File: BG018408.D  
 Acq: 12 Aug 2015 21:44

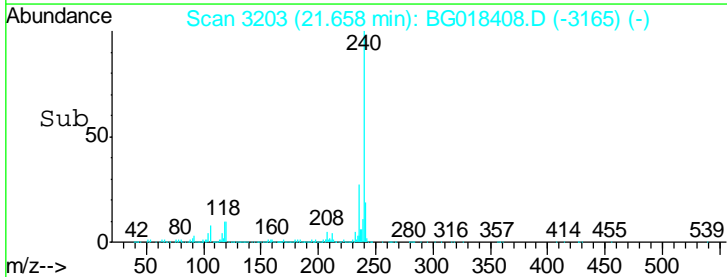
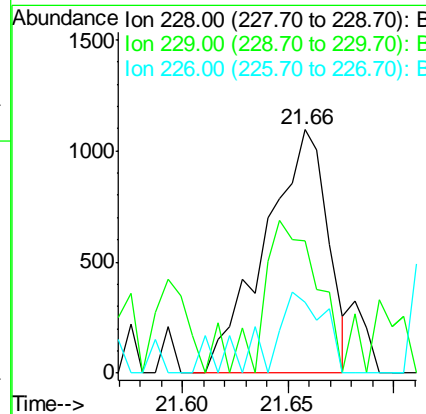
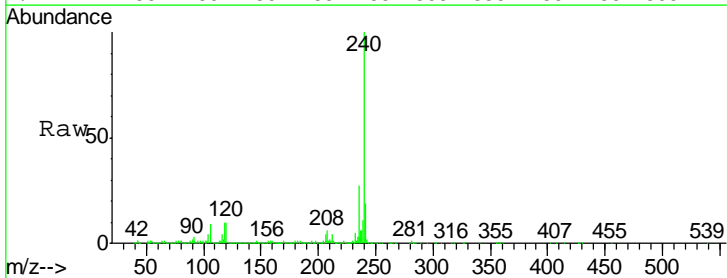
Instrument :  
 BNA\_M  
 ClientSampled :  
 MDL-BLK-S

| Tgt Ion | Resp | Lower | Upper |
|---------|------|-------|-------|
| 252     | 630  |       |       |
| 252     | 100  |       |       |
| 254     | 0.0  | 50.9  | 76.3# |
| 126     | 35.0 | 9.6   | 14.4# |

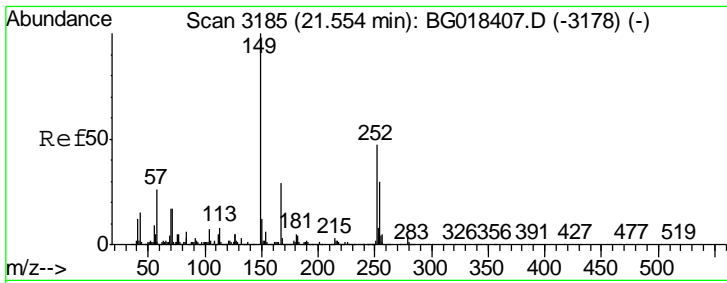


#83  
 Benzo(a)anthracene  
 Concen: 0.06 ng/ul  
 RT: 21.66 min Scan# 3203  
 Delta R.T. 0.02 min  
 Lab File: BG018408.D  
 Acq: 12 Aug 2015 21:44

| Tgt Ion | Resp | Lower | Upper |
|---------|------|-------|-------|
| 228     | 2261 |       |       |
| 228     | 100  |       |       |
| 229     | 54.6 | 15.5  | 23.3# |
| 226     | 29.2 | 22.1  | 33.1  |



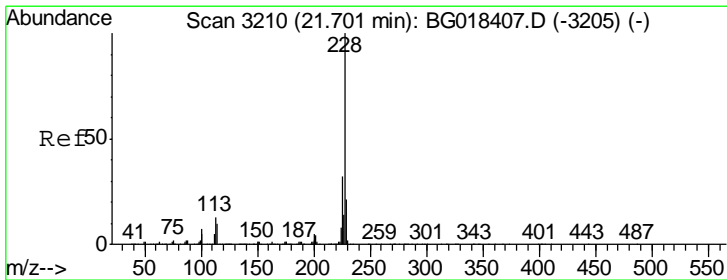
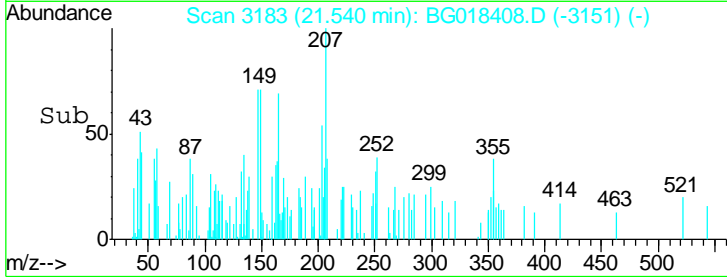
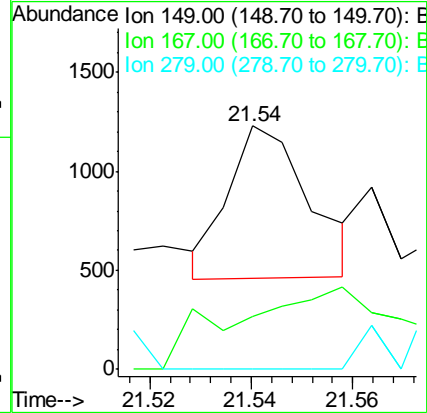
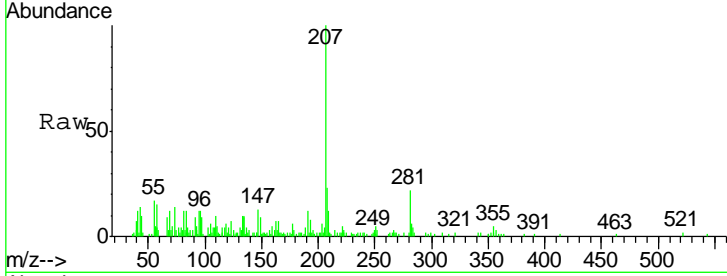




#84  
 Bis(2-ethylhexyl)phthalate  
 Concen: 0.03 ng/ul  
 RT: 21.54 min Scan# 3183  
 Delta R.T. -0.01 min  
 Lab File: BG018408.D  
 Acq: 12 Aug 2015 21:44

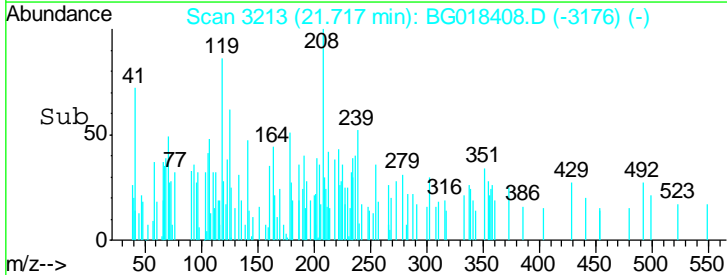
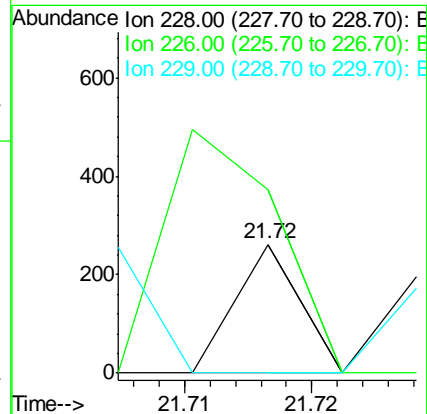
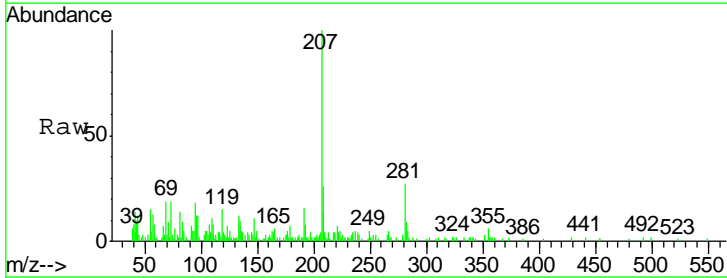
Instrument :  
 BNA\_M  
 ClientSampled :  
 MDL-BLK-S

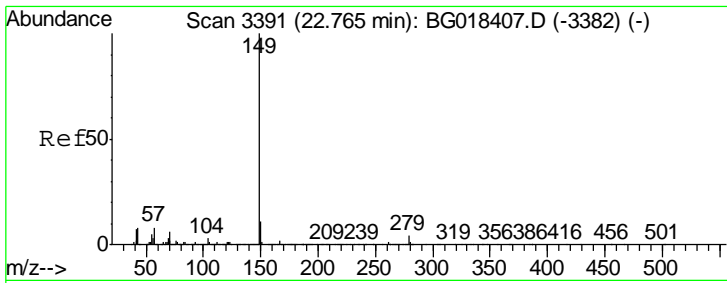
| Tgt Ion | Resp | Lower | Upper |
|---------|------|-------|-------|
| 149     | 100  |       |       |
| 167     | 21.9 | 22.2  | 33.2# |
| 279     | 0.0  | 2.8   | 4.2#  |



#85  
 Chrysene  
 Concen: 0.00 ng/ul  
 RT: 21.72 min Scan# 3213  
 Delta R.T. 0.02 min  
 Lab File: BG018408.D  
 Acq: 12 Aug 2015 21:44

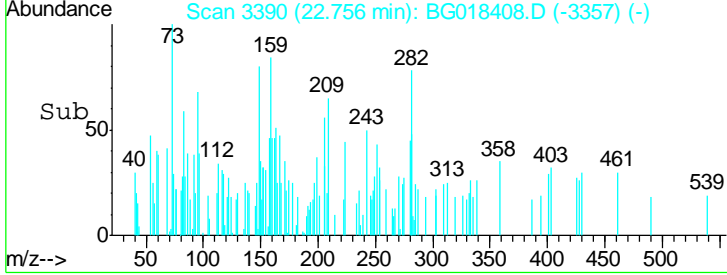
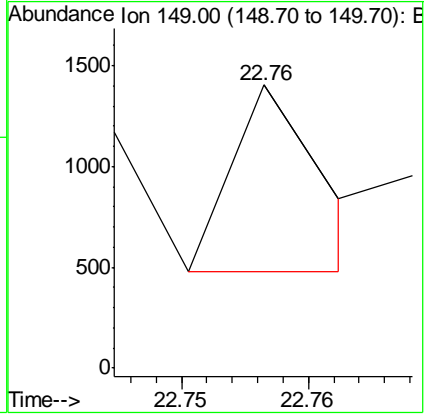
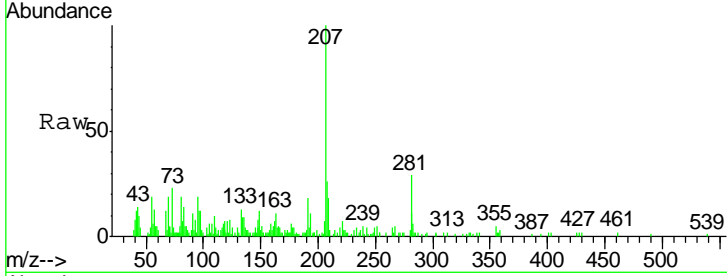
| Tgt Ion | Resp  | Lower | Upper |
|---------|-------|-------|-------|
| 228     | 100   |       |       |
| 226     | 142.5 | 26.5  | 39.7# |
| 229     | 0.0   | 16.9  | 25.3# |





#87  
 Di-n-octyl phthalate  
 Concen: 0.01 ng/ul  
 RT: 22.76 min Scan# 3390  
 Delta R.T. -0.01 min  
 Lab File: BG018408.D  
 Acq: 12 Aug 2015 21:44  
 Tgt Ion:149 Resp: 454

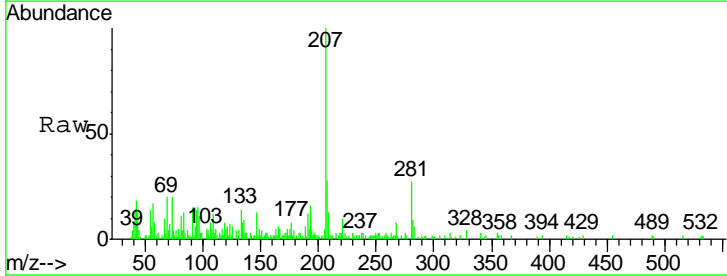
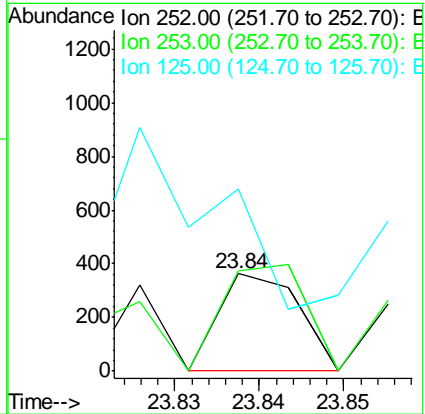
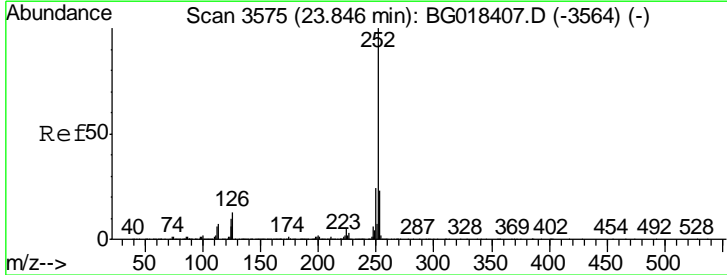
Instrument :  
 BNA\_M  
 ClientSampleID :  
 MDL-BLK-S

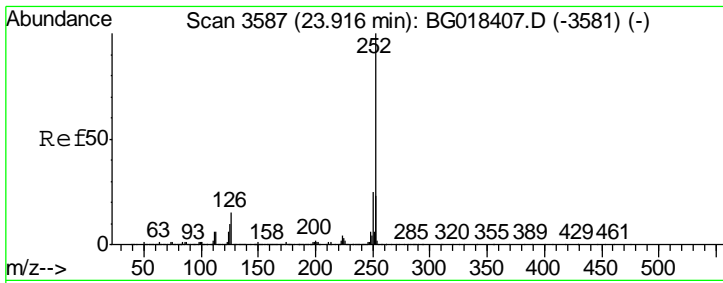


#88  
 Benzo(b)fluoranthene  
 Concen: 0.01 ng/ul  
 RT: 23.84 min Scan# 3574  
 Delta R.T. -0.01 min  
 Lab File: BG018408.D  
 Acq: 12 Aug 2015 21:44

Tgt Ion:252 Resp: 238

| Ion | Ratio | Lower | Upper |
|-----|-------|-------|-------|
| 252 | 100   |       |       |
| 253 | 103.3 | 18.1  | 27.1# |
| 125 | 186.8 | 8.3   | 12.5# |

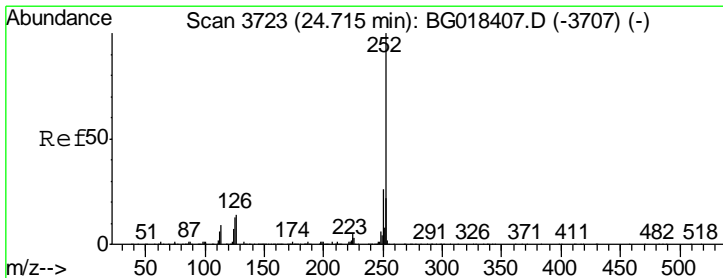
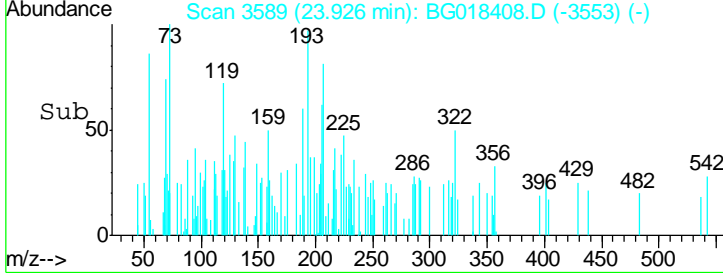
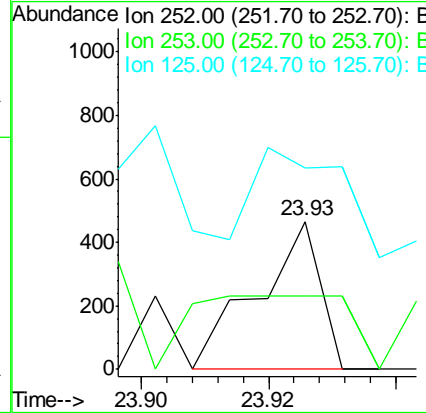
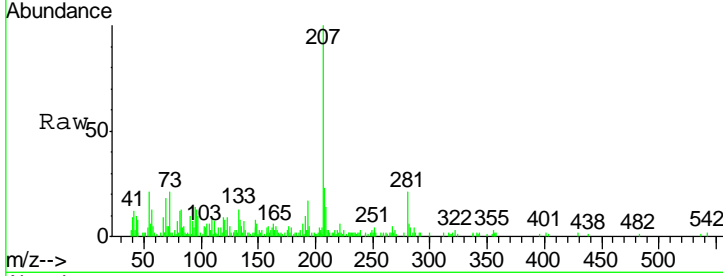




#89  
 Benzo(k)fluoranthene  
 Concen: 0.01 ng/ul  
 RT: 23.93 min Scan# 3589  
 Delta R.T. 0.01 min  
 Lab File: BG018408.D  
 Acq: 12 Aug 2015 21:44

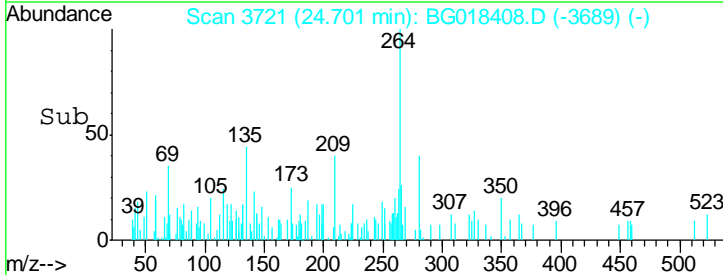
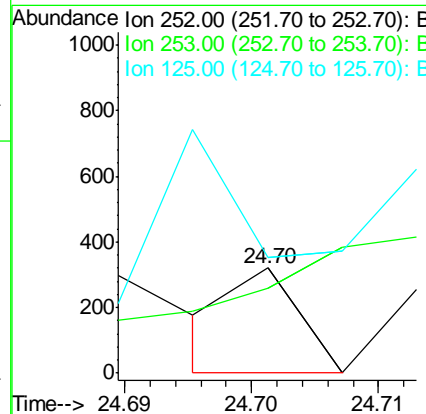
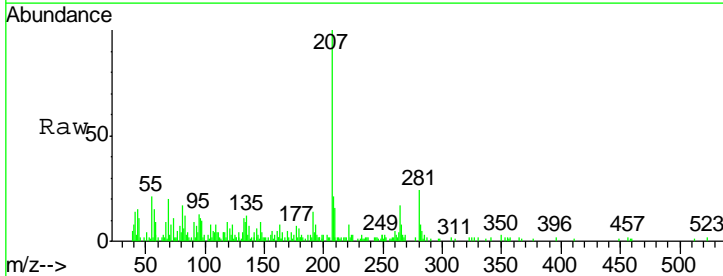
Instrument :  
 BNA\_M  
 ClientSampled :  
 MDL-BLK-S

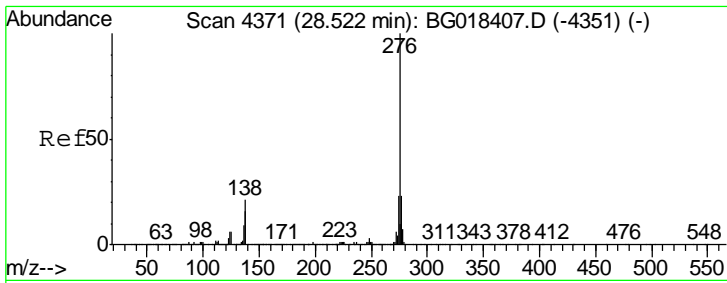
| Tgt Ion | Resp  | Lower | Upper |
|---------|-------|-------|-------|
| 252     | 100   |       |       |
| 253     | 49.9  | 17.8  | 26.6# |
| 125     | 135.5 | 9.0   | 13.4# |



#91  
 Benzo(a)pyrene  
 Concen: 0.00 ng/ul  
 RT: 24.70 min Scan# 3721  
 Delta R.T. -0.01 min  
 Lab File: BG018408.D  
 Acq: 12 Aug 2015 21:44

| Tgt Ion | Resp  | Lower | Upper |
|---------|-------|-------|-------|
| 252     | 100   |       |       |
| 253     | 81.0  | 17.7  | 26.5# |
| 125     | 109.3 | 10.2  | 15.2# |

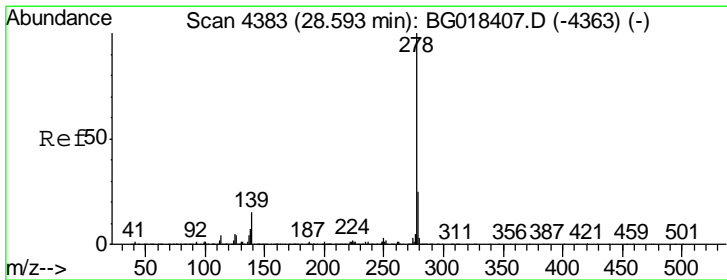
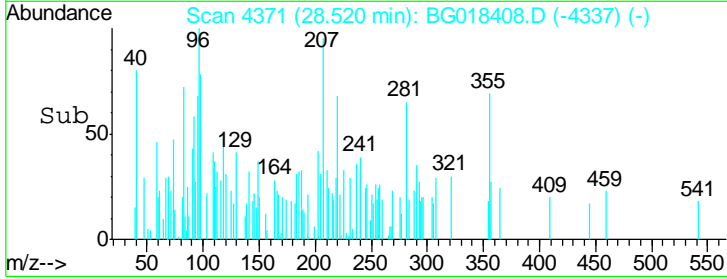
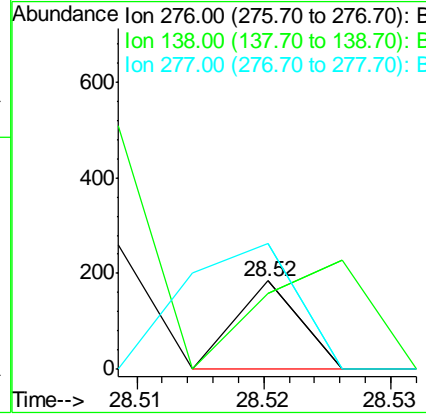
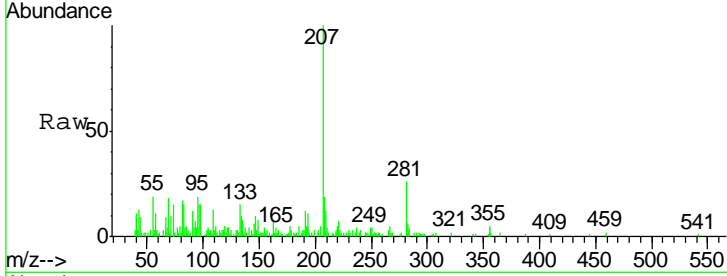




#92  
 Indeno(1,2,3-cd)pyrene  
 Concen: 0.00 ng/ul  
 RT: 28.52 min Scan# 4371  
 Delta R.T. -0.00 min  
 Lab File: BG018408.D  
 Acq: 12 Aug 2015 21:44

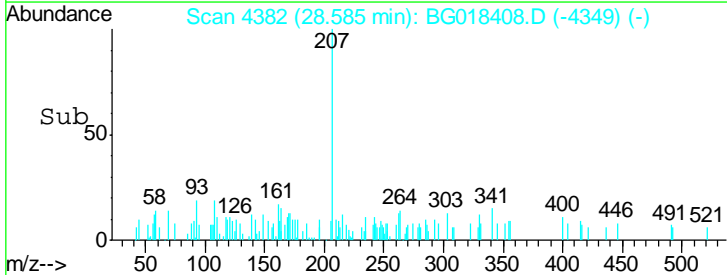
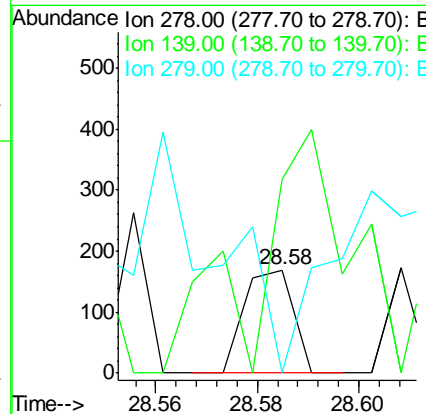
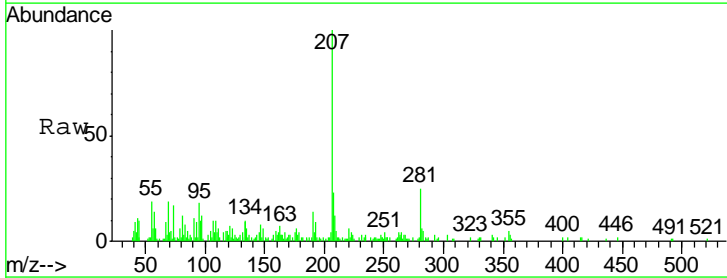
Instrument :  
 BNA\_M  
 ClientSampled :  
 MDL-BLK-S

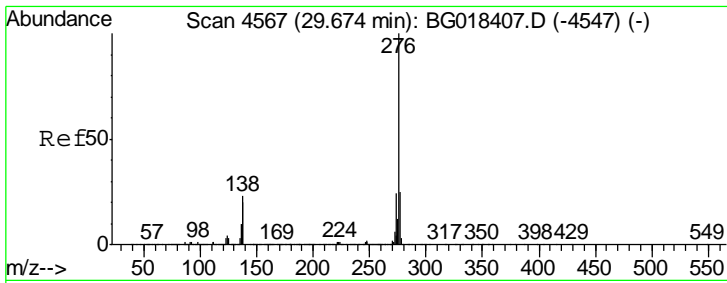
| Tgt Ion | Resp  | Lower | Upper |
|---------|-------|-------|-------|
| 276     | 100   |       |       |
| 138     | 85.9  | 15.8  | 23.6# |
| 277     | 142.9 | 18.9  | 28.3# |



#93  
 Dibenzo(a,h)anthracene  
 Concen: 0.00 ng/ul  
 RT: 28.58 min Scan# 4382  
 Delta R.T. -0.01 min  
 Lab File: BG018408.D  
 Acq: 12 Aug 2015 21:44

| Tgt Ion | Resp  | Lower | Upper |
|---------|-------|-------|-------|
| 278     | 100   |       |       |
| 139     | 188.2 | 13.8  | 20.6# |
| 279     | 0.0   | 17.8  | 26.8# |





#94  
 Benzo(g,h,i)perylene  
 Concen: 0.00 ng/ul  
 RT: 29.67 min Scan# 4566  
 Delta R.T. -0.01 min  
 Lab File: BG018408.D  
 Acq: 12 Aug 2015 21:44

Instrument :  
 BNA\_M  
 ClientSampled :  
 MDL-BLK-S

| Tgt Ion | Ratio | Lower | Upper |
|---------|-------|-------|-------|
| 276     | 100   |       |       |
| 138     | 62.8  | 16.5  | 24.7# |
| 277     | 68.6  | 19.0  | 28.6# |

