

Data Path : Z:\HPCHEM1\BNA M\Data\BM081415\  
 Data File : BM002403.D  
 Acq On : 15 Aug 2015 01:54  
 Operator : UM/IZ  
 Sample : G3219-10  
 Misc :  
 ALS Vial : 11 Sample Multiplier: 1

Instrument :  
 BNA\_M  
 ClientSampleId :  
 D9DA3

Quant Time: Aug 17 02:05:55 2015  
 Quant Method : Z:\HPCHEM1\BNA M\METHODS\SOM02.2-EPA-BM081415MA.M  
 Quant Title : SVOA CALIBRATION  
 QLast Update : Mon Aug 17 02:04:41 2015  
 Response via : Initial Calibration

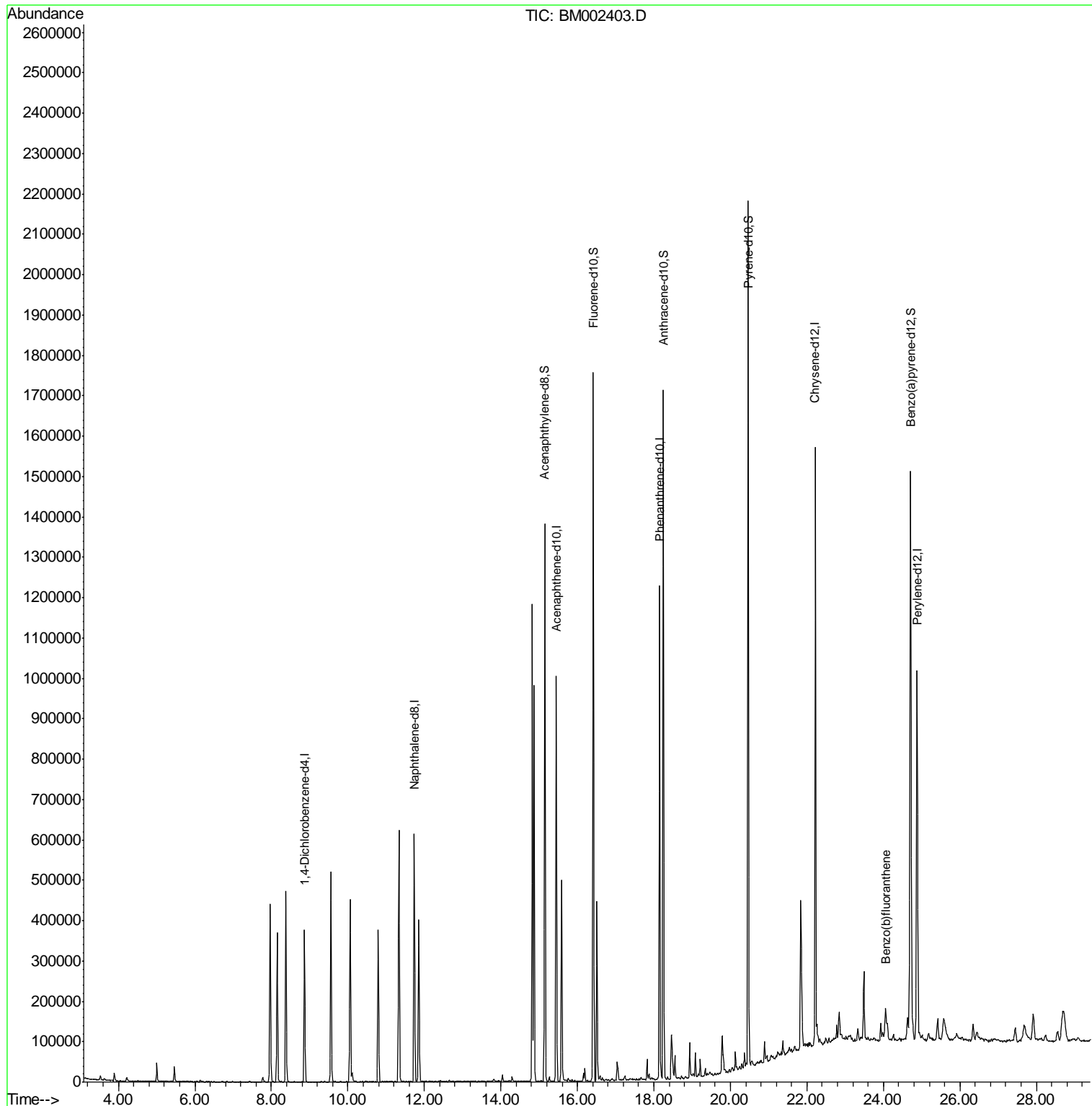
Internal Standards	R.T.	QIon	Response	Conc	Units	Dev(Min)
1) 1,4-Dichlorobenzene-d4	8.87	152	114459	20.00	ng/ul	0.00
2) Naphthalene-d8	11.74	136	584149	20.00	ng/ul	0.00
6) Acenaphthene-d10	15.45	164	342919	20.00	ng/ul	0.00
12) Phenanthrene-d10	18.15	188	744962	20.00	ng/ul	0.00
17) Chrysene-d12	22.23	240	782418	20.00	ng/ul	0.00
22) Perylene-d12	24.89	264	761128	20.00	ng/ul	0.00
System Monitoring Compounds						
7) Acenaphthylene-d8	15.15	160	1047092	29.87	ng/ul	0.00
10) Fluorene-d10	16.42	176	713655	28.98	ng/ul	0.00
14) Anthracene-d10	18.24	188	1029012	28.64	ng/ul	0.00
18) Pyrene-d10	20.46	212	1108516	31.96	ng/ul	0.00
25) Benzo(a)pyrene-d12	24.71	264	1162538	29.08	ng/ul	0.00
Target Compounds						
23) Benzo(b)fluoranthene	24.06	252	62239	1.35	ng/ul	Ovalue 96

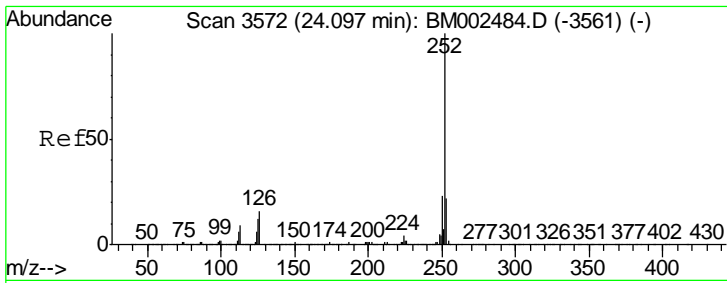
(#) = qualifier out of range (m) = manual integration (+) = signals summed

Data Path : Z:\HPCHEM1\BNA M\Data\BM081415\  
 Data File : BM002403.D  
 Acq On : 15 Aug 2015 01:54  
 Operator : UM/IZ  
 Sample : G3219-10  
 Misc :  
 ALS Vial : 11 Sample Multiplier: 1

Instrument :  
 BNA\_M  
 ClientSampleId :  
 D9DA3

Quant Time: Aug 17 02:05:55 2015  
 Quant Method : Z:\HPCHEM1\BNA M\METHODS\SOM02.2-EPA-BM081415MA.M  
 Quant Title : SVOA CALIBRATION  
 QLast Update : Mon Aug 17 02:04:41 2015  
 Response via : Initial Calibration





#23

Benzo(b)fluoranthene  
 Concen: 1.35 ng/ul  
 RT: 24.06 min Scan# 3565  
 Delta R.T. -0.01 min  
 Lab File: BM002403.D  
 Acq: 15 Aug 2015 01:54

Instrument :  
 BNA\_M  
 ClientSampled :  
 D9DA3

Tot Ion: 252 Resp: 62239

Ion	Ratio	Lower	Upper
252	100		
253	23.3	17.4	26.0
125	14.9	10.0	15.0

