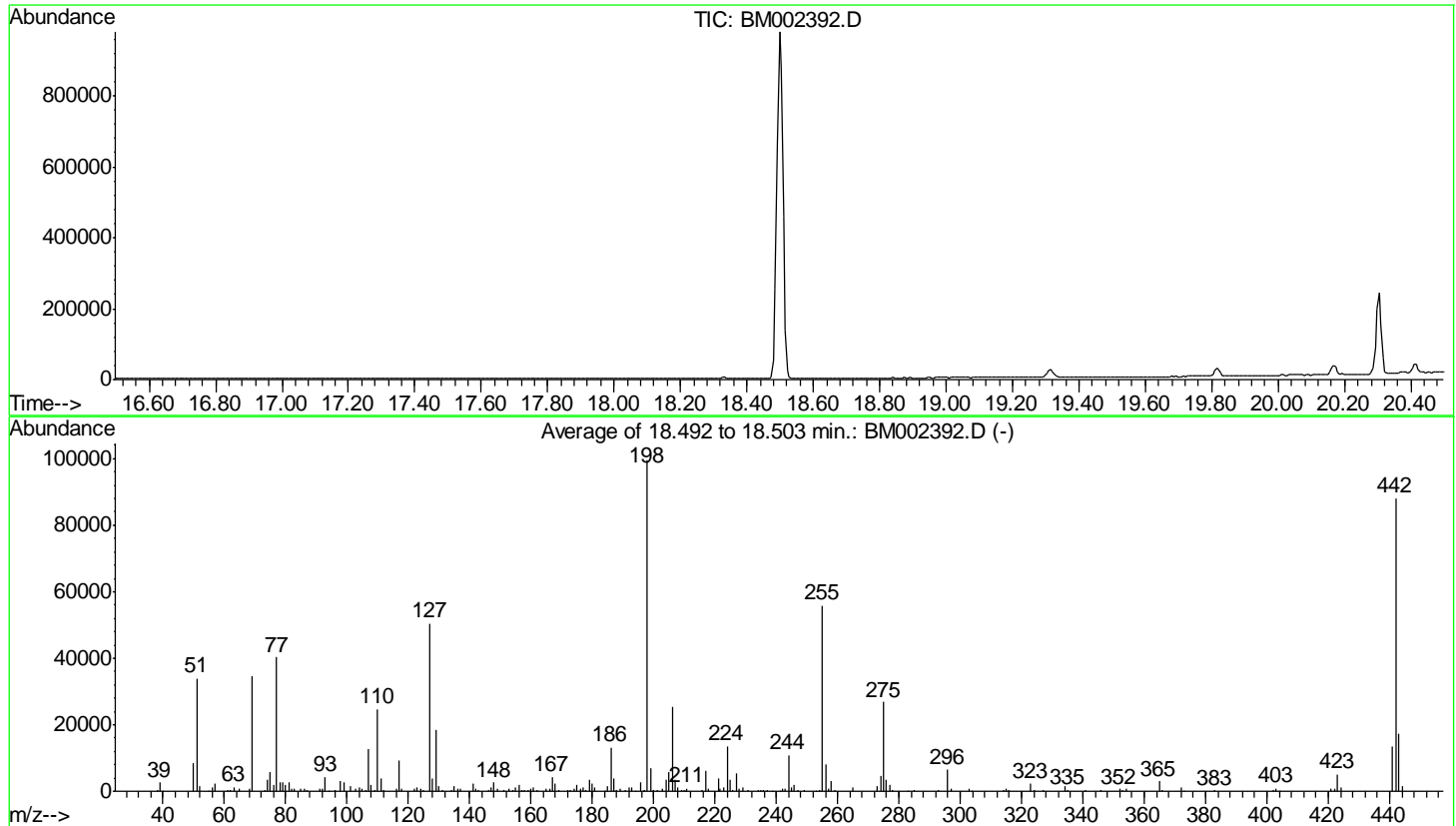


Data Path : Z:\HPCHEM1\BNA_M\DATA\BM081415\
 Data File : BM002392.D
 Acq On : 14 Aug 2015 19:13
 Operator : UM/IZ
 Sample : DFTPP97
 Misc :
 ALS Vial : 1 Sample Multiplier: 1

Instrument :
 BNA_M
 ClientSampleId :
 DFTPP97

Integration File: LSCINT.P

Method : Z:\HPCHEM1\BNA_M\METHODS\SOM02.2-EPA-BM081415MA.M
 Title : SVOA CALIBRATION
 Last Update : Mon Aug 17 05:12:59 2015



AutoFind: Scans 2619, 2620, 2621; Background Corrected with Scan 2614

Target Mass	Rel. to Mass	Lower Limit%	Upper Limit%	Rel. Abn%	Raw Abn	Result Pass/Fail
51	198	10	80	34.1	33989	PASS
68	69	0.00	2	1.9	643	PASS
69	198	0.00	100	34.7	34522	PASS
70	69	0.00	2	0.0	0	PASS
127	198	10	80	50.6	50424	PASS
197	198	0.00	2	0.4	380	PASS
198	198	100	100	100.0	99568	PASS
199	198	5	9	6.8	6798	PASS
275	198	10	60	26.9	26786	PASS
365	198	1	100	3.0	2974	PASS
441	443	0.01	100	76.9	13282	PASS
442	198	50	100	88.5	88125	PASS
443	442	15	24	19.6	17274	PASS

m/z	Abundance
40.00	427.0
44.00	2991.0
207.00	653.0
281.00	307.0

Instrument :
BNA_M
ClientSampleId :
DFTPP97

m/z	Abundance
38.00	354.0
39.00	2656.0
40.00	560.0
44.00	3181.0
50.00	7983.0
51.00	32520.0
52.00	1544.0
56.00	965.0
57.00	2123.0
60.90	371.0
62.00	419.0
63.00	1118.0
65.00	671.0
68.10	578.0
69.00	30952.0
73.00	484.0
74.00	3011.0
75.00	5048.0
76.00	1710.0
77.10	37032.0
78.00	2653.0
79.00	2412.0
80.00	1724.0
81.00	2493.0
81.90	704.0
83.00	671.0
85.00	523.0
86.00	707.0
91.00	669.0
92.00	666.0
93.00	4018.0
96.10	330.0
98.00	2764.0
99.00	2327.0
101.00	1579.0
102.90	509.0
104.00	876.0
105.00	817.0
106.00	410.0
107.00	11490.0
108.00	1779.0
109.00	370.0
110.00	21520.0
111.00	3329.0
112.00	404.0
116.00	681.0
117.00	8458.0
118.00	560.0
122.00	496.0
123.00	1162.0
123.90	483.0
125.00	487.0
127.00	43392.0
128.00	3275.0
129.00	15596.0
129.90	1435.0
131.00	346.0
134.00	382.0
135.00	1376.0
136.00	563.0
137.00	623.0
140.90	1928.0
142.10	670.0
142.90	419.0
145.90	504.0
147.00	1081.0
148.00	2120.0
149.00	597.0
152.90	651.0
153.90	362.0
154.90	1173.0
156.00	1483.0
157.00	417.0
157.80	380.0
159.90	527.0
160.90	901.0
165.00	758.0
166.00	593.0
167.00	3457.0
168.00	2047.0
171.90	388.0
172.90	456.0
174.00	655.0
175.00	1364.0
176.10	466.0
177.00	776.0
177.80	333.0
179.00	3061.0
180.00	2055.0
181.00	855.0
185.00	1523.0

Instrument :
BNA_M
ClientSampleId :
DFTPP97

186.00	10241.0
187.00	3122.0
188.00	395.0
188.90	519.0
191.00	487.0
192.00	836.0
193.00	1143.0
195.90	2070.0
197.90	80536.0
198.90	5674.0
200.00	540.0
201.40	483.0
202.80	443.0
204.00	2957.0
205.00	4586.0
206.00	20216.0
207.00	3475.0
207.90	922.0
209.00	321.0
210.30	449.0
211.10	706.0
216.10	397.0
217.00	4835.0
217.90	642.0
221.00	3240.0
221.70	813.0
223.00	980.0
224.00	10342.0
225.00	2814.0
225.90	306.0
227.00	4372.0
228.00	448.0
228.90	879.0
230.90	387.0
237.00	325.0
242.00	547.0
243.00	516.0
244.10	7850.0
245.00	984.0
245.90	1430.0
246.90	330.0
249.00	344.0
255.00	41640.0
256.00	6352.0
257.00	548.0
258.00	2208.0
258.90	398.0
264.90	845.0
272.90	1203.0
274.00	3331.0
275.00	19128.0
276.00	2922.0
276.90	1542.0
284.90	343.0
293.00	345.0
296.00	4741.0
296.90	668.0
303.00	558.0
315.00	637.0
316.00	323.0
323.00	1524.0
324.00	368.0
326.90	397.0
334.00	980.0
335.00	313.0
352.00	511.0
353.00	339.0
354.00	499.0
365.00	1904.0
365.90	359.0
372.00	778.0
402.00	368.0
402.90	492.0
421.00	455.0
421.90	383.0
423.00	3041.0
424.00	597.0
441.00	8256.0
442.00	54744.0
443.00	11144.0
444.10	920.0

Instrument :
BNA_M
ClientSampleId :
DFTPP97

m/z	Abundance
38.00	478.0
39.00	3060.0
39.90	589.0
44.00	2946.0
50.00	9997.0
51.00	39368.0
52.00	1933.0
54.90	341.0
56.00	1242.0
57.00	2711.0
61.00	422.0
62.00	492.0
63.00	1489.0
65.00	837.0
68.00	745.0
69.00	41336.0
73.00	653.0
74.00	3945.0
75.00	6609.0
76.10	2189.0
77.00	46448.0
78.00	3387.0
79.00	2875.0
80.00	2332.0
81.00	3312.0
82.00	986.0
83.00	876.0
84.90	636.0
86.00	921.0
86.90	356.0
91.00	1014.0
92.00	902.0
93.00	5341.0
94.00	358.0
96.00	404.0
98.00	3630.0
99.00	3093.0
101.00	1953.0
103.00	727.0
104.00	1387.0
105.00	1034.0
106.00	359.0
107.00	14868.0
108.00	2424.0
109.10	595.0
110.00	28792.0
111.00	4387.0
111.90	591.0
116.00	761.0
117.00	10278.0
118.00	897.0
122.00	948.0
123.00	1488.0
123.90	757.0
124.90	746.0
127.00	58504.0
128.00	4517.0
129.00	22200.0
130.00	1781.0
130.90	379.0
133.90	514.0
135.00	1932.0
136.00	591.0
137.00	944.0
141.00	2592.0
142.00	898.0
143.00	604.0
146.00	478.0
147.00	1311.0
148.00	3026.0
148.90	685.0
151.00	420.0
153.00	749.0
154.00	645.0
155.00	1583.0
156.00	2280.0
157.10	405.0
157.90	557.0
158.90	490.0
159.90	908.0
161.00	1130.0
162.00	397.0
164.90	1066.0
166.00	836.0
167.00	5160.0
167.90	2633.0
169.00	491.0
171.90	491.0
172.90	638.0
173.90	1136.0
175.00	2084.0

Instrument :
BNA_M
ClientSampleId :
DFTPP97

176.00	775.0
177.00	1255.0
177.90	377.0
179.00	4041.0
180.00	2758.0
181.00	1426.0
184.00	305.0
185.00	2086.0
186.00	15297.0
187.00	4261.0
188.00	621.0
188.90	847.0
190.90	432.0
192.00	1260.0
193.00	1571.0
193.90	333.0
196.00	3400.0
196.80	609.0
197.10	575.0
197.90	116048.0
198.90	7988.0
199.90	605.0
201.20	590.0
202.90	750.0
204.00	3760.0
205.00	6570.0
206.00	29104.0
207.00	4510.0
208.00	1056.0
208.90	502.0
210.00	532.0
210.90	1085.0
215.90	606.0
217.00	7323.0
218.00	822.0
221.00	4600.0
221.80	1093.0
223.00	1420.0
224.00	15816.0
225.00	4370.0
226.00	419.0
227.00	6400.0
227.90	863.0
229.00	1324.0
231.00	606.0
234.00	476.0
234.90	499.0
235.90	308.0
237.00	485.0
238.90	316.0
242.00	754.0
243.00	717.0
244.00	12772.0
245.10	1685.0
245.90	2213.0
246.90	596.0
249.00	556.0
254.10	477.0
255.00	65112.0
256.00	9769.0
257.00	900.0
258.00	3397.0
258.90	637.0
265.00	1197.0
273.00	2037.0
274.00	5067.0
275.00	30952.0
276.00	4079.0
277.00	2336.0
278.00	361.0
281.10	359.0
282.90	330.0
284.90	438.0
293.00	753.0
296.00	7747.0
296.90	1069.0
302.90	788.0
303.90	301.0
314.00	433.0
315.00	792.0
316.00	519.0
323.00	2703.0
323.90	439.0
326.90	662.0
334.00	2037.0
335.00	526.0
340.90	313.0
346.00	498.0
352.00	765.0
353.00	657.0
354.00	769.0
365.00	3343.0
365.90	412.0
372.00	1480.0
383.00	432.0

Instrument :
BNA_M
ClientSampleId :
DFTPP97

402.00	596.0
403.00	872.0
421.00	732.0
422.00	781.0
423.00	5822.0
424.00	1141.0
441.00	15160.0
442.00	100160.0
443.00	19168.0
444.00	2135.0

Instrument :
BNA_M
ClientSampleId :
DFTPP97

m/z	Abundance
38.00	459.0
39.00	2258.0
40.00	520.0
44.00	2716.0
50.00	7648.0
51.10	30080.0
52.00	1604.0
55.90	909.0
57.00	2276.0
61.00	393.0
61.90	444.0
63.00	1266.0
65.10	691.0
68.00	608.0
69.00	31280.0
73.00	471.0
74.00	3299.0
75.00	5125.0
76.00	1882.0
77.00	37296.0
78.10	2441.0
79.00	2354.0
80.00	1795.0
81.00	2670.0
82.00	622.0
83.00	737.0
84.90	621.0
86.00	791.0
87.00	392.0
91.00	590.0
91.90	617.0
93.00	3555.0
98.00	2823.0
99.00	2567.0
101.00	1608.0
103.00	555.0
104.00	1131.0
105.00	959.0
106.00	383.0
107.00	11745.0
108.00	1778.0
108.90	345.0
110.00	23664.0
111.00	3557.0
111.90	382.0
116.00	726.0
117.00	8968.0
118.00	777.0
121.90	848.0
123.00	1157.0
123.90	604.0
124.90	452.0
127.00	49376.0
128.00	3479.0
129.00	17992.0
130.00	1615.0
133.90	690.0
135.00	1537.0
136.00	757.0
137.00	768.0
141.00	2334.0
141.90	775.0
142.90	612.0
145.90	396.0
147.00	1132.0
148.00	2559.0
148.90	547.0
151.10	409.0
153.00	736.0
154.00	557.0
155.00	1257.0
156.10	1876.0
157.00	338.0
157.90	475.0
158.90	355.0
160.00	704.0
161.00	1075.0
161.90	320.0
164.90	877.0
166.00	751.0
167.00	4402.0
168.00	2125.0
169.00	423.0
171.90	461.0
173.00	501.0
174.00	919.0
175.00	2093.0
175.90	724.0
176.90	904.0
179.00	3723.0
180.00	2317.0

Instrument :
BNA_M
ClientSampleId :
DFTPP97

180.90	1304.0
185.00	1562.0
186.00	13763.0
187.00	3832.0
187.90	380.0
188.90	985.0
191.00	516.0
192.00	1006.0
193.00	1206.0
196.00	2967.0
197.10	567.0
197.90	102120.0
199.00	6733.0
199.90	556.0
201.30	509.0
202.90	757.0
204.00	3551.0
205.00	5919.0
206.00	26640.0
207.00	4425.0
208.00	959.0
209.00	388.0
209.90	424.0
210.90	1109.0
215.90	526.0
217.00	6548.0
217.90	806.0
221.00	4297.0
221.80	921.0
222.90	1453.0
224.00	14226.0
225.00	3327.0
226.00	404.0
227.00	5477.0
227.90	1051.0
229.00	1435.0
231.00	491.0
233.90	323.0
234.90	369.0
236.00	405.0
237.00	462.0
241.00	352.0
242.00	699.0
243.00	753.0
244.00	11743.0
245.00	1297.0
246.00	2073.0
246.90	430.0
249.00	489.0
253.00	334.0
254.10	573.0
255.00	60864.0
256.00	8549.0
256.90	725.0
258.00	3303.0
259.00	545.0
264.90	1323.0
273.00	1824.0
274.00	5003.0
275.00	30280.0
276.00	3733.0
277.00	2242.0
277.90	374.0
285.00	488.0
292.90	554.0
296.00	6955.0
296.90	908.0
303.00	922.0
313.90	406.0
314.90	873.0
316.00	538.0
323.00	2545.0
324.00	405.0
327.00	567.0
334.00	1589.0
335.00	389.0
341.00	313.0
345.90	551.0
352.00	872.0
353.00	492.0
354.00	871.0
365.00	3676.0
366.00	442.0
372.00	1547.0
373.00	343.0
383.00	452.0
402.00	604.0
403.00	970.0
404.00	339.0
420.90	786.0
421.90	656.0
423.00	6235.0
424.00	1215.0
441.00	16432.0
442.00	109472.0

Instrument :
BNA_M
ClientSampleId :
DFTPP97

443.00
444.00

21512.0
1848.0

Instrument :
BNA_M
ClientSampleId :
DFTPP97