

Data Path : Z:\svoasrv\HPCHEM1\BNA\_M\Data\BM081524\  
 Data File : BM047218.D  
 Acq On : 15 Aug 2024 16:52  
 Operator : RC/JU  
 Sample : P3518-03  
 Misc :  
 ALS Vial : 11 Sample Multiplier: 1

Instrument :  
 BNA\_M  
 ClientSampleId :  
 OU4-TS-02-080724

Integration Parameters: rteint.p  
 Integrator: RTE  
 Smoothing : ON Filtering: 5  
 Sampling : 1 Min Area: 3 % of largest Peak  
 Start Thrs: 0.2 Max Peaks: 100  
 Stop Thrs : 0 Peak Location: TOP

If leading or trailing edge < 100 prefer < Baseline drop else tangent >  
 Peak separation: 5

Method : Z:\svoasrv\HPCHEM1\BNA\_M\Methods\8270-BM081024.M  
 Title : ASP BNA STANDARDS FOR 5 POINT CALIBRATION

Signal : TIC: BM047218.D\data.ms

peak #	R.T. min	first scan	max scan	last scan	PK TY	peak height	corr. area	corr. % max.	% of total
1	3.263	61	64	75	rBV	133594	185226	5.38%	0.450%
2	4.575	282	287	295	rVB	137131	185974	5.41%	0.452%
3	5.022	357	363	374	rBV	2042256	2970866	86.37%	7.218%
4	6.575	620	627	640	rBV	1911833	2979456	86.62%	7.239%
5	6.998	695	699	712	rBV	41240	81702	2.38%	0.199%
6	7.363	755	761	771	rBV	1055327	1659572	48.25%	4.032%
7	8.510	949	956	965	rBV	1311915	2053464	59.70%	4.989%
8	10.122	1223	1230	1239	rBV	1274771	2093327	60.86%	5.086%
9	10.881	1352	1359	1369	rBV2	121750	257166	7.48%	0.625%
10	12.633	1650	1657	1669	rBV	2208963	3438108	99.95%	8.353%
11	13.739	1837	1845	1853	rBV5	26796	63376	1.84%	0.154%
12	14.022	1886	1893	1901	rBV	1716452	2581525	75.05%	6.272%
13	14.263	1927	1934	1935	rBV	1561460	1911386	55.57%	4.644%
14	14.280	1935	1937	1947	rVB	1895329	2343632	68.13%	5.694%
15	15.533	2143	2150	2162	rBV	1926705	2876515	83.63%	6.989%
16	16.233	2265	2269	2275	rVB6	20067	35298	1.03%	0.086%
17	16.786	2358	2363	2368	rBV	1959815	2729244	79.34%	6.631%
18	16.827	2368	2370	2374	rVB	53108	53611	1.56%	0.130%
19	16.916	2382	2385	2393	rVB4	37033	56209	1.63%	0.137%
20	17.498	2481	2484	2490	rVB2	50547	65889	1.92%	0.160%
21	17.727	2517	2523	2536	rBV	565487	1007134	29.28%	2.447%
22	17.992	2565	2568	2575	rBV8	40839	58532	1.70%	0.142%
23	18.686	2683	2686	2690	rVB4	81340	98499	2.86%	0.239%
24	18.868	2712	2717	2720	rBV	167067	248662	7.23%	0.604%
25	19.027	2739	2744	2752	rBV2	273825	448431	13.04%	1.090%
26	19.227	2775	2778	2784	rVB	125776	163461	4.75%	0.397%
27	19.451	2811	2816	2822	rBV	2828841	3439767	100.00%	8.357%
28	20.109	2925	2928	2933	rBV3	80916	140975	4.10%	0.343%
29	20.768	3037	3040	3050	rVB2	250896	409738	11.91%	0.996%
30	21.021	3078	3083	3088	rBV	2035482	2861770	83.20%	6.953%
31	22.997	3415	3419	3426	rVB	339060	613966	17.85%	1.492%
32	23.721	3535	3542	3560	rVB	1317498	3046133	88.56%	7.401%

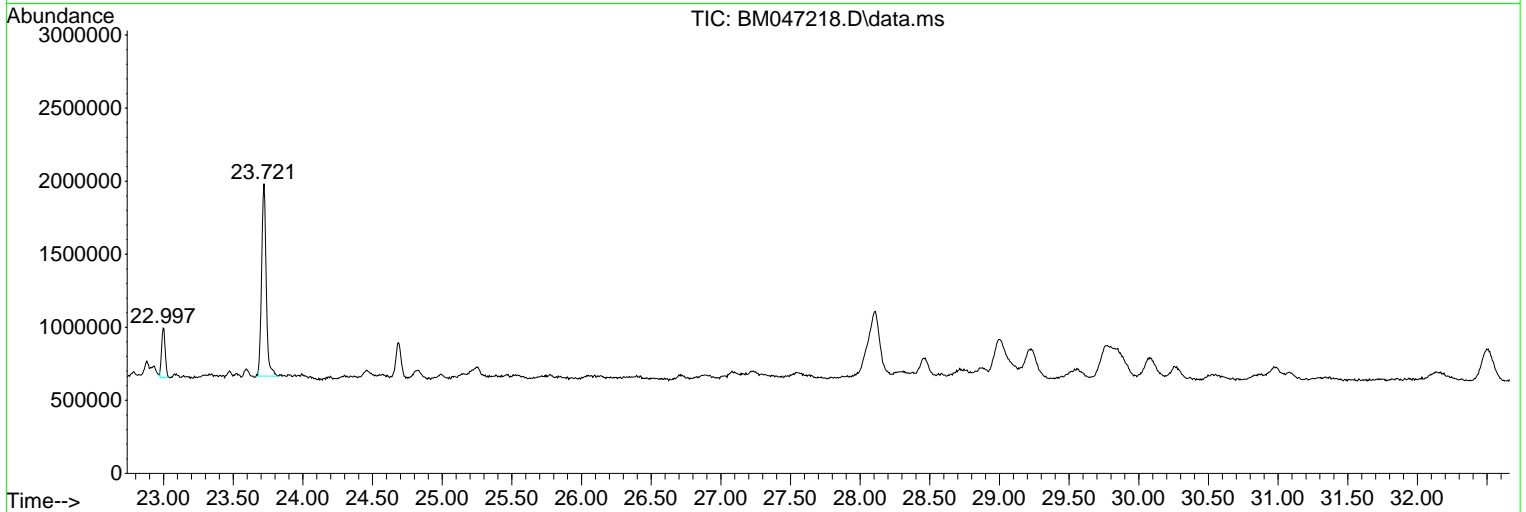
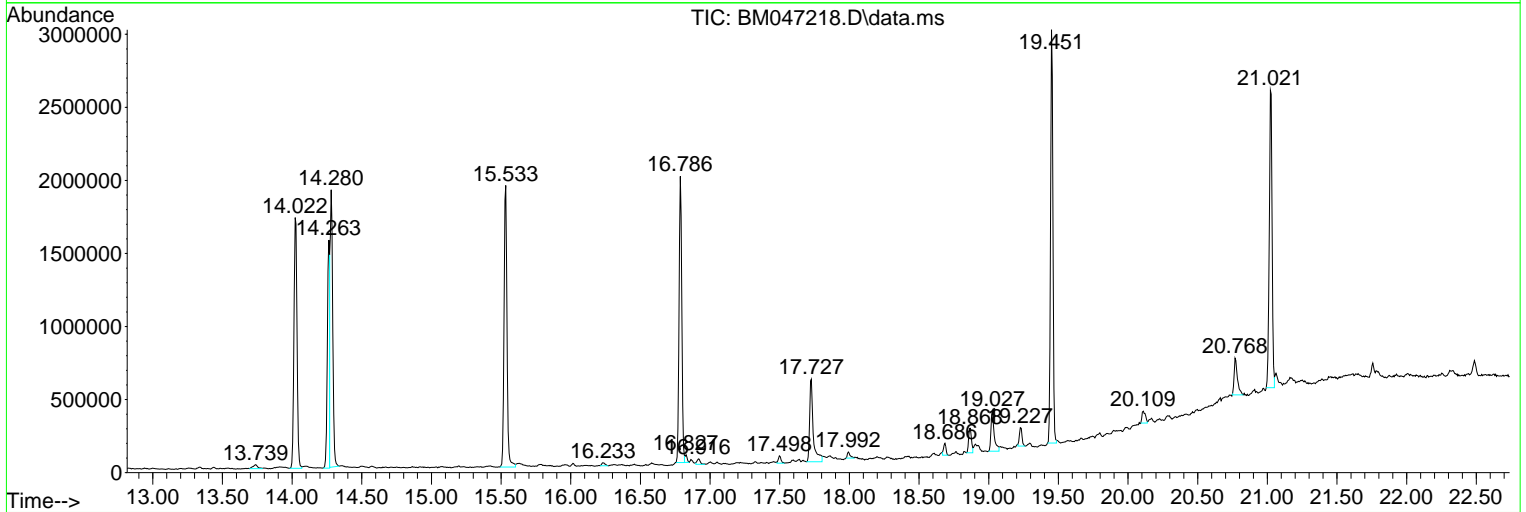
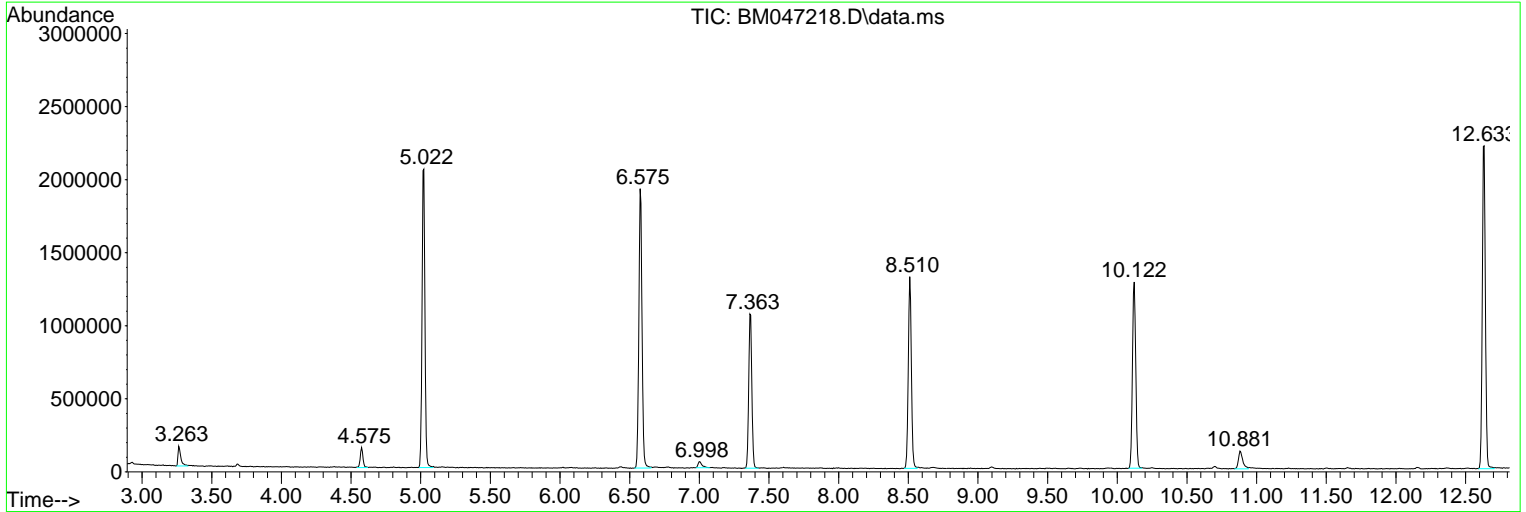
Sum of corrected areas: 41158614

Data Path : Z:\svoasrv\HPCHEM1\BNA\_M\Data\BM081524\  
 Data File : BM047218.D  
 Acq On : 15 Aug 2024 16:52  
 Operator : RC/JU  
 Sample : P3518-03  
 Misc :  
 ALS Vial : 11 Sample Multiplier: 1

Instrument :  
 BNA\_M  
 ClientSampleId :  
 OU4-TS-02-080724

Quant Method : Z:\svoasrv\HPCHEM1\BNA\_M\Methods\8270-BM081024.M  
 Quant Title : ASP BNA STANDARDS FOR 5 POINT CALIBRATION

TIC Library : C:\Database\NIST20.L  
 TIC Integration Parameters: LSCINT.P



Library Search Compound Report

Data Path : Z:\svoasrv\HPCHEM1\BNA\_M\Data\BM081524\  
Data File : BM047218.D  
Acq On : 15 Aug 2024 16:52  
Operator : RC/JU  
Sample : P3518-03  
Misc :  
ALS Vial : 11 Sample Multiplier: 1

**Instrument :**  
BNA\_M  
**ClientSampleId :**  
OU4-TS-02-080724

Quant Method : Z:\svoasrv\HPCHEM1\BNA\_M\Methods\8270-BM081024.M  
Quant Title : ASP BNA STANDARDS FOR 5 POINT CALIBRATION

TIC Library : C:\Database\NIST20.L  
TIC Integration Parameters: LSCINT.P

No Library Search Compounds Detected

\*\*\*\*\*

Data Path : Z:\svoasrv\HPCHEM1\BNA\_M\Data\BM081524\  
Data File : BM047218.D  
Acq On : 15 Aug 2024 16:52  
Operator : RC/JU  
Sample : P3518-03  
Misc :  
ALS Vial : 11 Sample Multiplier: 1

Instrument :  
BNA\_M  
ClientSampleId :  
OU4-TS-02-080724

Quant Method : Z:\svoasrv\HPCHEM1\BNA\_M\Methods\8270-BM081024.M  
Quant Title : ASP BNA STANDARDS FOR 5 POINT CALIBRATION

TIC Library : C:\Database\NIST20.L  
TIC Integration Parameters: LSCINT.P

TIC Top Hit name	RT	EstConc	Units	Response	#	RT	Resp	Conc
------------------	----	---------	-------	----------	---	----	------	------

---