

Data Path : Z:\HPCHEM1\BNA M\DATA\BM081816\
 Data File : BM007197.D
 Acq On : 18 Aug 2016 01:58
 Operator : UM/SJ
 Sample : H4479-02MS
 Misc :
 ALS Vial : 52 Sample Multiplier: 1

Instrument :
 BNA_M
 ClientSampleId :
 E5N35MS

Quant Time: Aug 18 11:01:58 2016
 Quant Method : Z:\HPCHEM1\BNA M\METHODS\SOM02.2-EPA-BM081116.M
 Quant Title : SVOA CALIBRATION
 QLast Update : Wed Aug 17 04:01:43 2016
 Response via : Initial Calibration

Internal Standards	R.T.	QIon	Response	Conc	Units	Dev(Min)
1) 1,4-Dichlorobenzene-d4	7.80	152	237222	20.00	ng/ul	0.00
18) Naphthalene-d8	10.59	136	949628	20.00	ng/ul	0.00
35) Acenaphthene-d10	14.43	164	562491	20.00	ng/ul	0.00
61) Phenanthrene-d10	17.17	188	1305092	20.00	ng/ul	0.00
75) Chrysene-d12	21.36	240	1618366	20.00	ng/ul	0.00
83) Perylene-d12	23.63	264	1677102	20.00	ng/ul	0.00

System Monitoring Compounds

3) 1,4-Dioxane-d8	3.33	96	7349	1.35	ng/uL	0.00
5) Phenol-d5	6.97	99	134101	6.98	ng/ul	0.00
7) Bis-(2-Chloroethyl)ether-d	7.14	67	312663	28.38	ng/ul	0.00
9) 2-Chlorophenol-d4	7.34	132	363216	23.73	ng/ul	0.00
13) 4-Methylphenol-d8	8.50	113	242384	15.33	ng/ul	0.00
19) Nitrobenzene-d5	8.96	128	208495	30.23	ng/ul	0.00
22) 2-Nitrophenol-d4	9.67	143	233212	31.65	ng/ul	0.00
26) 2,4-Dichlorophenol-d3	10.21	165	419079	27.15	ng/ul	0.00
29) 4-Chloroaniline-d4	10.73	131	20260	1.10	ng/ul	0.00
43) Dimethylphthalate-d6	13.85	166	1389168	29.89	ng/ul	0.00
46) Acenaphthylene-d8	14.13	160	1683769	30.16	ng/ul	0.00
51) 4-Nitrophenol-d4	14.63	143	42655	5.12	ng/ul	0.00
57) Fluorene-d10	15.43	176	1199031	29.51	ng/ul	0.00
62) 4,6-Dinitro-2-methylphenol	15.54	200	170206	23.60	ng/ul	0.00
70) Anthracene-d10	17.27	188	1907106	31.54	ng/ul	0.00
76) Pyrene-d10	19.57	212	2218064	32.47	ng/ul	0.00
87) Benzo(a)pyrene-d12	23.49	264	2400700	31.30	ng/ul	0.00

Target Compounds

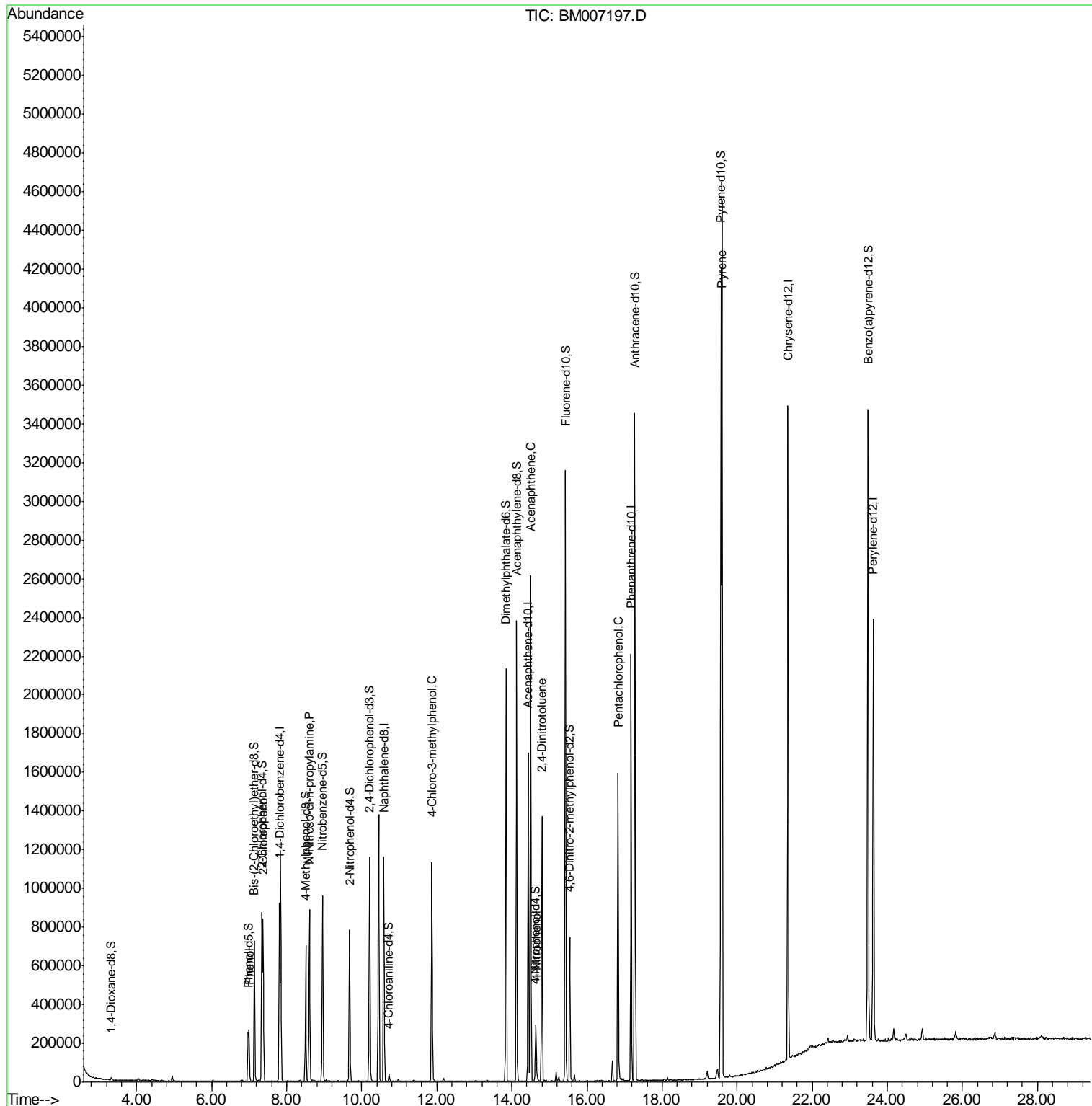
Target Compounds	R.T.	QIon	Response	Conc	Units	Ovalue
6) Phenol	7.00	94	135341	6.69	ng/ul	95
10) 2-Chlorophenol	7.37	128	341955	21.84	ng/ul	99
15) N-Nitroso-di-n-propylamine	8.60	70	336065	26.52	ng/ul	96
33) 4-Chloro-3-methylphenol	11.87	107	386998	23.04	ng/ul	94
49) Acenaphthene	14.50	153	1047757	28.08	ng/ul	99
52) 4-Nitrophenol	14.64	109	44530	5.26	ng/ul	95
54) 2,4-Dinitrotoluene	14.80	165	363404	27.28	ng/ul	98
68) Pentachlorophenol	16.83	266	278565	27.08	ng/ul	99
77) Pyrene	19.60	202	2617881	29.26	ng/ul	98

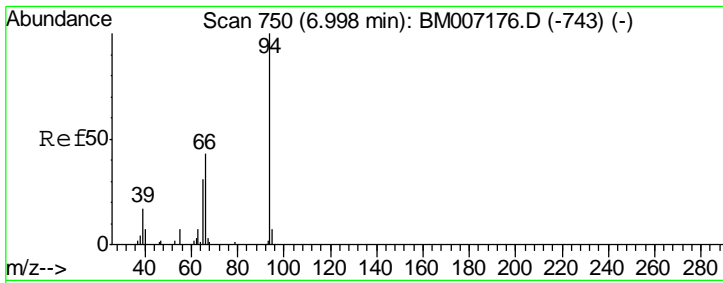
(#) = qualifier out of range (m) = manual integration (+) = signals summed

Data Path : Z:\HPCHEM1\BNA M\DATA\BM081816\
 Data File : BM007197.D
 Acq On : 18 Aug 2016 01:58
 Operator : UM/SJ
 Sample : H4479-02MS
 Misc :
 ALS Vial : 52 Sample Multiplier: 1

Instrument :
 BNA_M
 ClientSampleId :
 E5N35MS

Quant Time: Aug 18 11:01:58 2016
 Quant Method : Z:\HPCHEM1\BNA M\METHODS\SOM02.2-EPA-BM081116.M
 Quant Title : SVOA CALIBRATION
 QLast Update : Wed Aug 17 04:01:43 2016
 Response via : Initial Calibration

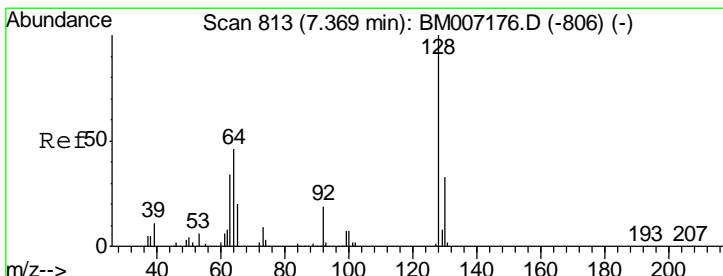
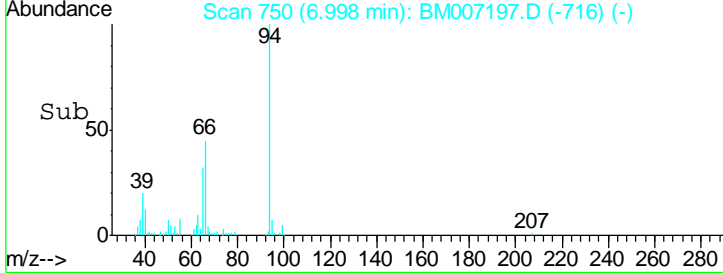
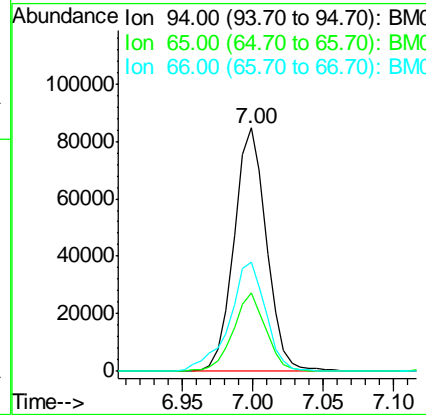
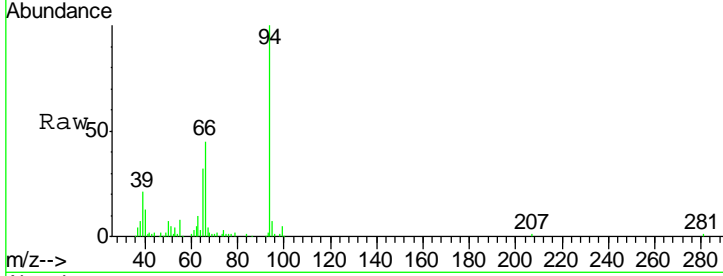




#6
 Phenol
 Concen: 6.69 ng/ul
 RT: 7.00 min Scan# 750
 Delta R.T. 0.00 min
 Lab File: BM007197.D
 Acq: 18 Aug 2016 01:58

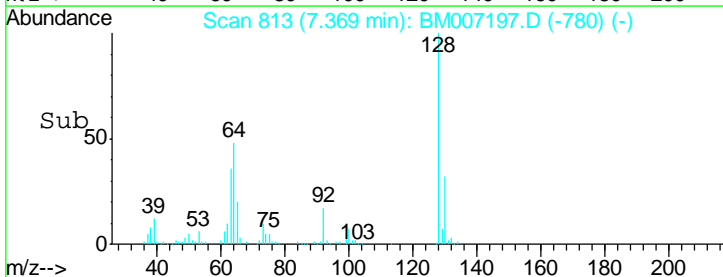
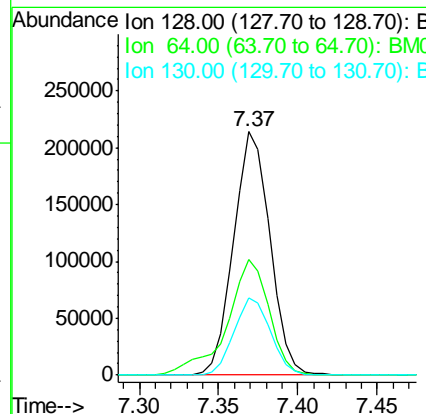
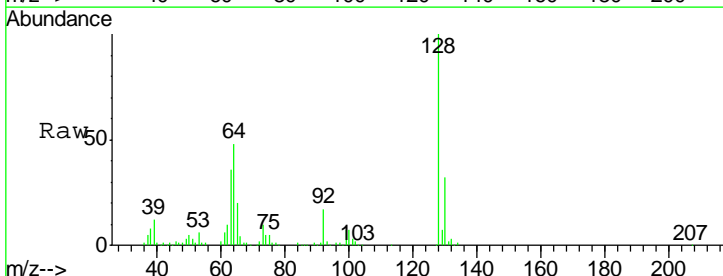
Instrument :
 BNA_M
 ClientSampled :
 E5N35MS

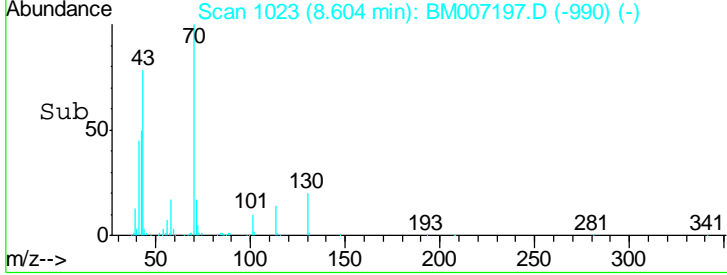
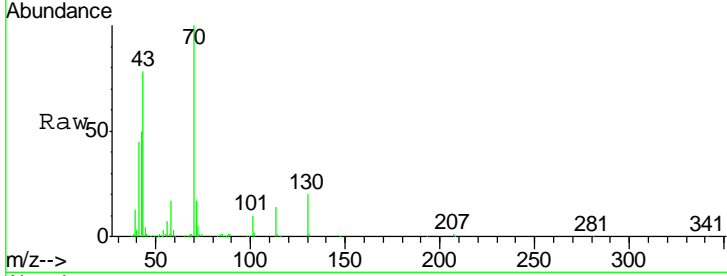
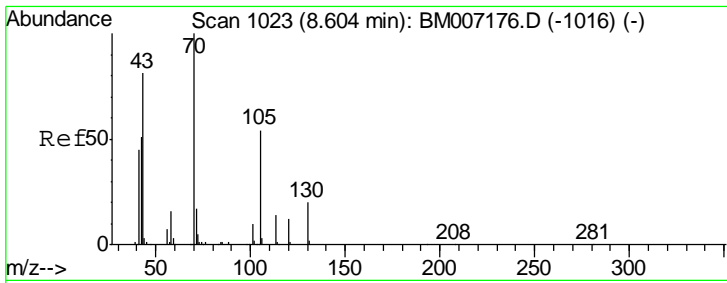
Tgt Ion	Resp	Lower	Upper
94	135341		
65	32.4	23.9	35.9
66	45.0	33.5	50.3



#10
 2-Chlorophenol
 Concen: 21.84 ng/ul
 RT: 7.37 min Scan# 813
 Delta R.T. -0.01 min
 Lab File: BM007197.D
 Acq: 18 Aug 2016 01:58

Tgt Ion	Resp	Lower	Upper
128	341955		
64	47.6	37.5	56.3
130	31.6	25.0	37.4

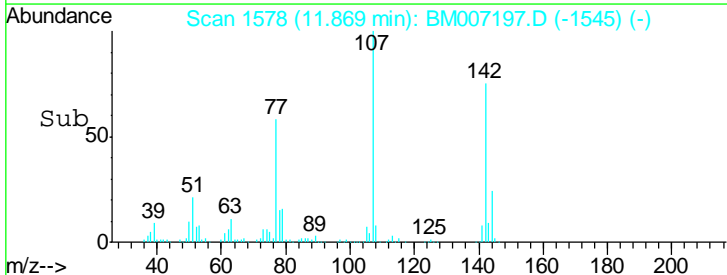
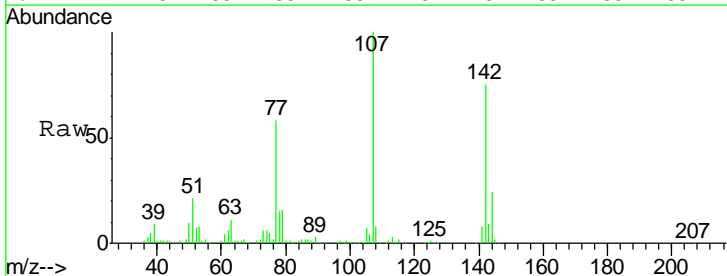
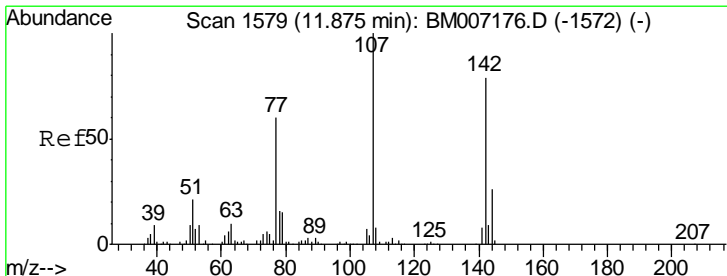
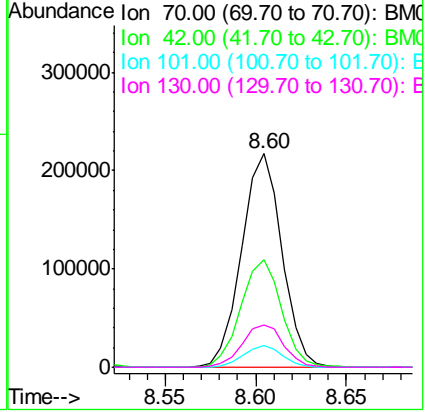




#15
 N-Nitroso-di-n-propylamine
 Concen: 26.52 ng/ul
 RT: 8.60 min Scan# 1023
 Delta R.T. -0.01 min
 Lab File: BM007197.D
 Acq: 18 Aug 2016 01:58

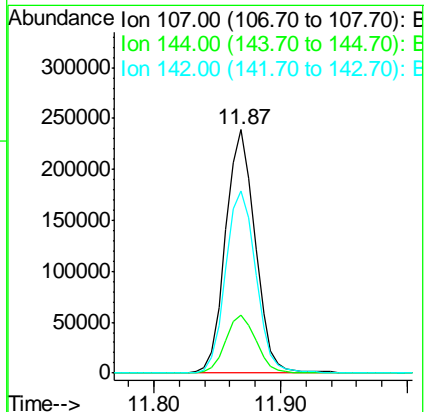
Instrument :
 BNA_M
ClientSampled :
 E5N35MS

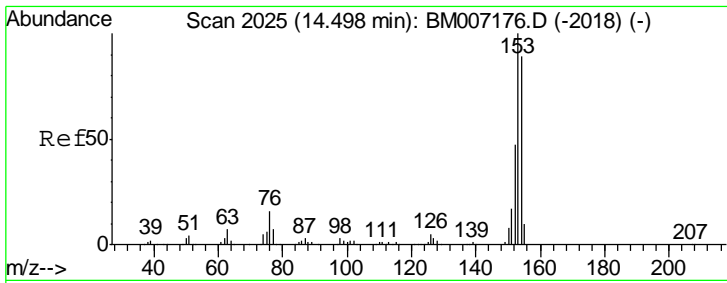
Tgt Ion	Resp	Lower	Upper
70	100		
42	50.3	43.4	65.2
101	10.2	7.8	11.6
130	19.9	16.2	24.4



#33
 4-Chloro-3-methylphenol
 Concen: 23.04 ng/ul
 RT: 11.87 min Scan# 1578
 Delta R.T. -0.01 min
 Lab File: BM007197.D
 Acq: 18 Aug 2016 01:58

Tgt Ion	Resp	Lower	Upper
107	100		
144	23.9	21.1	31.7
142	74.6	64.1	96.1

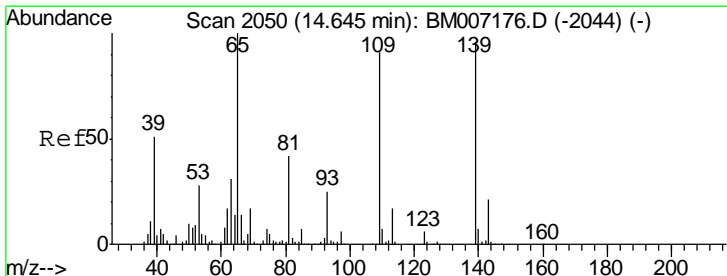
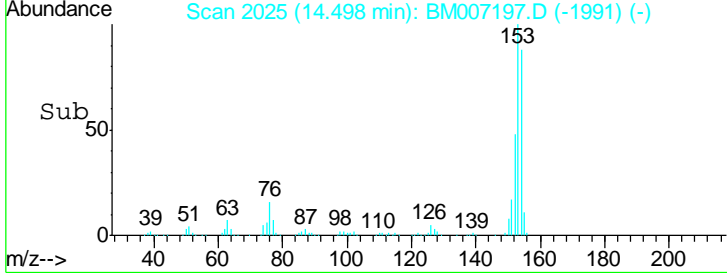
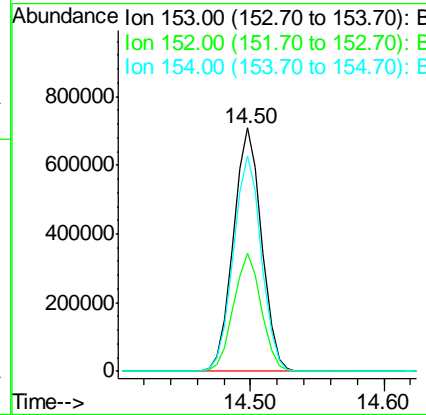
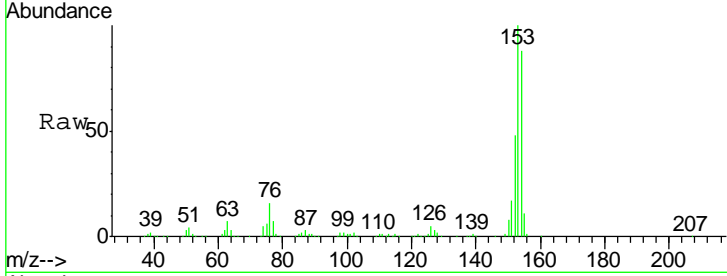




#49
 Acenaphthene
 Concen: 28.08 ng/ul
 RT: 14.50 min Scan# 2025
 Delta R.T. 0.00 min
 Lab File: BM007197.D
 Acq: 18 Aug 2016 01:58

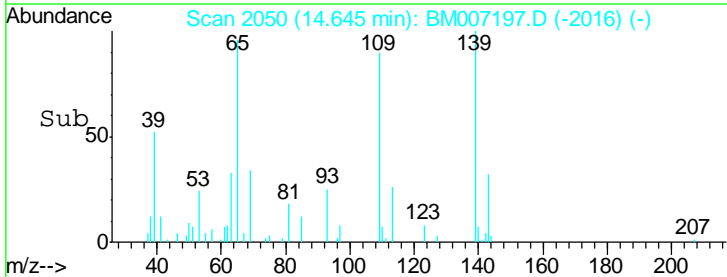
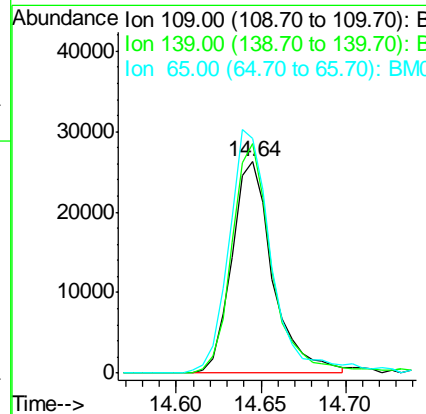
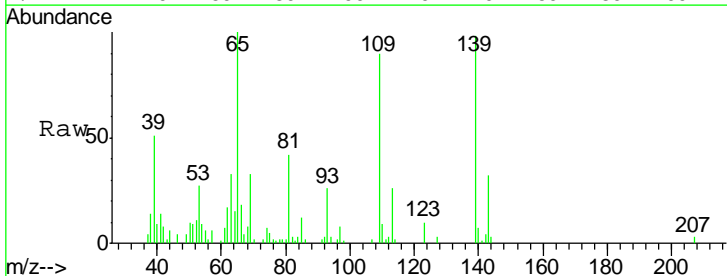
Instrument :
 BNA_M
 ClientSampled :
 E5N35MS

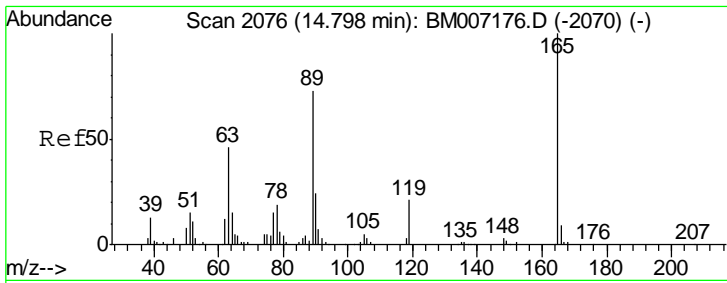
Tgt Ion	Resp	Lower	Upper
153	1047757		
152	48.3	37.8	56.6
154	88.3	71.4	107.0



#52
 4-Nitrophenol
 Concen: 5.26 ng/ul
 RT: 14.64 min Scan# 2050
 Delta R.T. 0.00 min
 Lab File: BM007197.D
 Acq: 18 Aug 2016 01:58

Tgt Ion	Resp	Lower	Upper
109	44530		
139	108.6	88.7	133.1
65	111.1	96.4	144.6

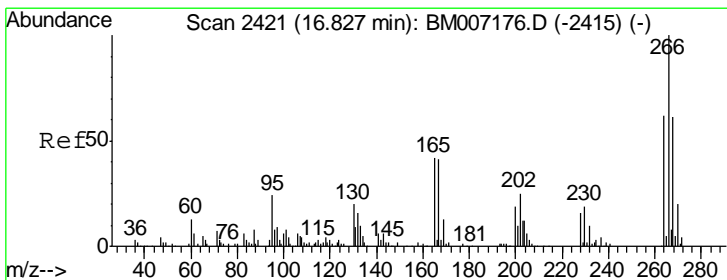
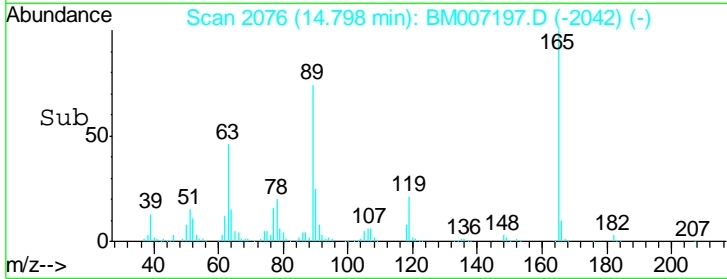
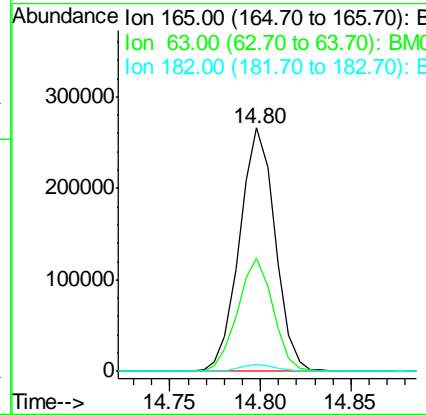
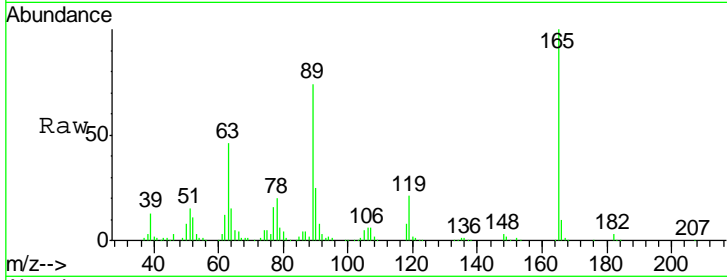




#54
 2,4-Dinitrotoluene
 Concen: 27.28 ng/ul
 RT: 14.80 min Scan# 2076
 Delta R.T. 0.00 min
 Lab File: BM007197.D
 Acq: 18 Aug 2016 01:58

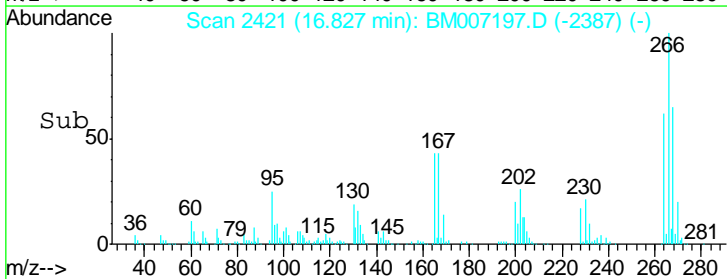
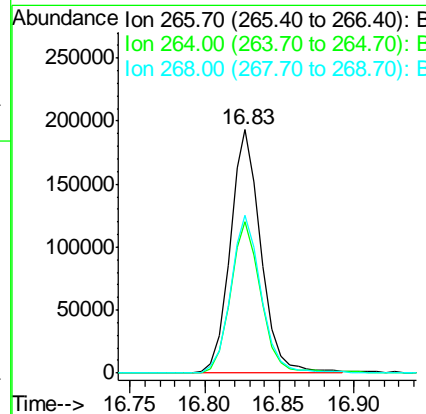
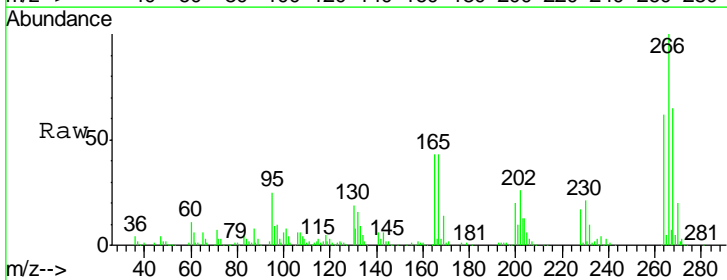
Instrument :
 BNA_M
 ClientSampled :
 E5N35MS

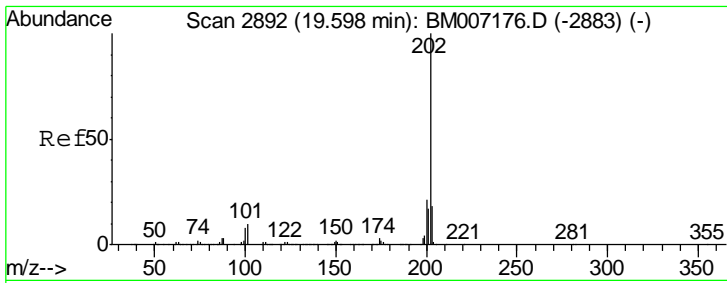
Tgt Ion	Resp	Lower	Upper
165	100		
63	46.5	36.2	54.2
182	2.6	2.2	3.4



#68
 Pentachlorophenol
 Concen: 27.08 ng/ul
 RT: 16.83 min Scan# 2421
 Delta R.T. 0.00 min
 Lab File: BM007197.D
 Acq: 18 Aug 2016 01:58

Tgt Ion	Resp	Lower	Upper
266	100		
264	62.4	50.6	75.8
268	64.7	51.0	76.6





#77

Pyrene

Concen: 29.26 ng/ul

RT: 19.60 min Scan# 2892

Delta R.T. 0.00 min

Lab File: BM007197.D

Acq: 18 Aug 2016 01:58

Instrument :

BNA_M

ClientSampleId :

E5N35MS

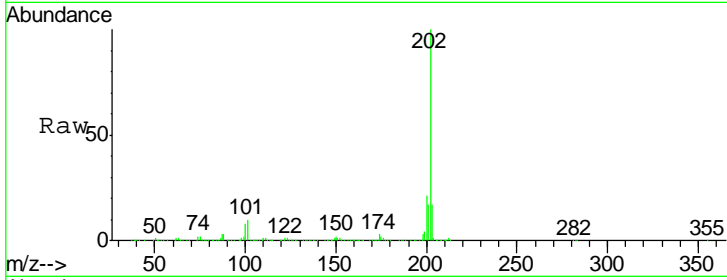
Tot Ion: 202 Resp: 2617881

Ion Ratio Lower Upper

202 100

101 9.5 8.4 12.6

100 8.0 6.9 10.3



Abundance

Ion 202.00 (201.70 to 202.70): E

Ion 101.00 (100.70 to 101.70): E

Ion 100.00 (99.70 to 100.70): B

