

Data Path : Z:\svoasrv\HPCHEM1\BNA_M\Data\BM081822\
 Data File : BM036344.D
 Acq On : 18 Aug 2022 12:16
 Operator : CG/JU
 Sample : PB146656BL
 Misc :
 ALS Vial : 3 Sample Multiplier: 1

Instrument :
 BNA_M
 ClientSampleId :
 SBLK656

Integration Parameters: LSCINT.P

Integrator: RTE
 Smoothing : OFF Filtering: 5
 Sampling : 1 Min Area: 0.1 % of largest Peak
 Start Thrs: 0.2 Max Peaks: 100
 Stop Thrs : 0 Peak Location: TOP

If leading or trailing edge < 100 prefer < Baseline drop else tangent >
 Peak separation: 5

Method : Z:\svoasrv\HPCHEM1\BNA_M\Methods\SFAM-EPA-BM081622.M
 Title : SVOA CALIBRATION

Signal : TIC: BM036344.D\data.ms

peak #	R.T. min	first scan	max scan	last scan	PK TY	peak height	corr. area	corr. % max.	% of total
1	3.205	17	20	31	rVB	69034	95903	2.02%	0.189%
2	3.634	90	93	110	rBV	598295	962317	20.29%	1.900%
3	3.952	143	147	152	rVB	16060	22509	0.47%	0.044%
4	6.975	654	661	676	rBV	893348	1433738	30.24%	2.831%
5	7.134	682	688	703	rVB	759391	1183492	24.96%	2.337%
6	7.328	714	721	733	rBV	922649	1462152	30.84%	2.887%
7	7.792	792	800	812	rBV	830185	1316683	27.77%	2.600%
8	8.516	916	923	944	rBV	1022237	1755026	37.01%	3.465%
9	8.963	991	999	1013	rBV	857230	1404129	29.61%	2.772%
10	9.686	1114	1122	1140	rBV	657074	1139834	24.04%	2.250%
11	10.228	1207	1214	1232	rBV	900328	1677555	35.38%	3.312%
12	10.592	1269	1276	1288	rBV	1189132	1937610	40.86%	3.825%
13	10.745	1295	1302	1321	rBV	921936	1712725	36.12%	3.381%
14	12.204	1545	1550	1558	rBV2	12111	25290	0.53%	0.050%
15	13.857	1825	1831	1847	rBV	1647177	2312568	48.77%	4.566%
16	14.133	1871	1878	1891	rBV	2042059	2932947	61.85%	5.791%
17	14.286	1898	1904	1909	rVB9	2551	6121	0.13%	0.012%
18	14.439	1923	1930	1946	rBV	1657291	2369390	49.97%	4.678%
19	14.668	1963	1969	1990	rBV	440159	1054610	22.24%	2.082%
20	15.433	2091	2099	2113	rBV	2582824	3565165	75.19%	7.039%
21	15.563	2116	2121	2135	rBV	573555	923623	19.48%	1.824%
22	15.674	2136	2140	2145	rVB2	23415	38550	0.81%	0.076%
23	16.215	2227	2232	2236	rVB7	6863	9472	0.20%	0.019%
24	16.645	2302	2305	2309	rBV5	3957	6499	0.14%	0.013%
25	16.862	2338	2342	2346	rVB7	3857	5450	0.11%	0.011%
26	16.968	2358	2360	2368	rVB5	4068	5531	0.12%	0.011%
27	17.180	2390	2396	2406	rBV	1857564	2587165	54.56%	5.108%
28	17.280	2407	2413	2433	rVB	2691302	3811000	80.37%	7.524%
29	18.092	2547	2551	2552	rBV4	5887	6451	0.14%	0.013%
30	19.139	2726	2729	2736	rBV3	29289	43806	0.92%	0.086%
31	19.215	2738	2742	2748	rVV	25200	38076	0.80%	0.075%
32	19.574	2798	2803	2812	rBV	3201847	4302885	90.74%	8.495%
33	20.580	2971	2974	2978	rBV	74132	80716	1.70%	0.159%
34	21.368	3103	3108	3117	rBV	2175796	2814381	59.35%	5.556%
35	23.550	3472	3479	3492	rVB2	2268471	4741812	100.00%	9.362%
36	23.697	3498	3504	3515	rVB2	1467662	2865143	60.42%	5.657%

Data Path : Z:\svoasrv\HPCHEM1\BNA_M\Data\BM081822\
Data File : BM036344.D
Acq On : 18 Aug 2022 12:16
Operator : CG/JU
Sample : PB146656BL
Misc :
ALS Vial : 3 Sample Multiplier: 1

Instrument :
BNA_M
ClientSampleId :
SBLK656

Integration Parameters: LSCINT.P
Integrator: RTE
Smoothing : OFF Filtering: 5
Sampling : 1 Min Area: 0.1 % of largest Peak
Start Thrs: 0.2 Max Peaks: 100
Stop Thrs : 0 Peak Location: TOP

If leading or trailing edge < 100 prefer < Baseline drop else tangent >
Peak separation: 5

Method : Z:\svoasrv\HPCHEM1\BNA_M\Methods\SFAM-EPA-BM081622.M
Title : SVOA CALIBRATION

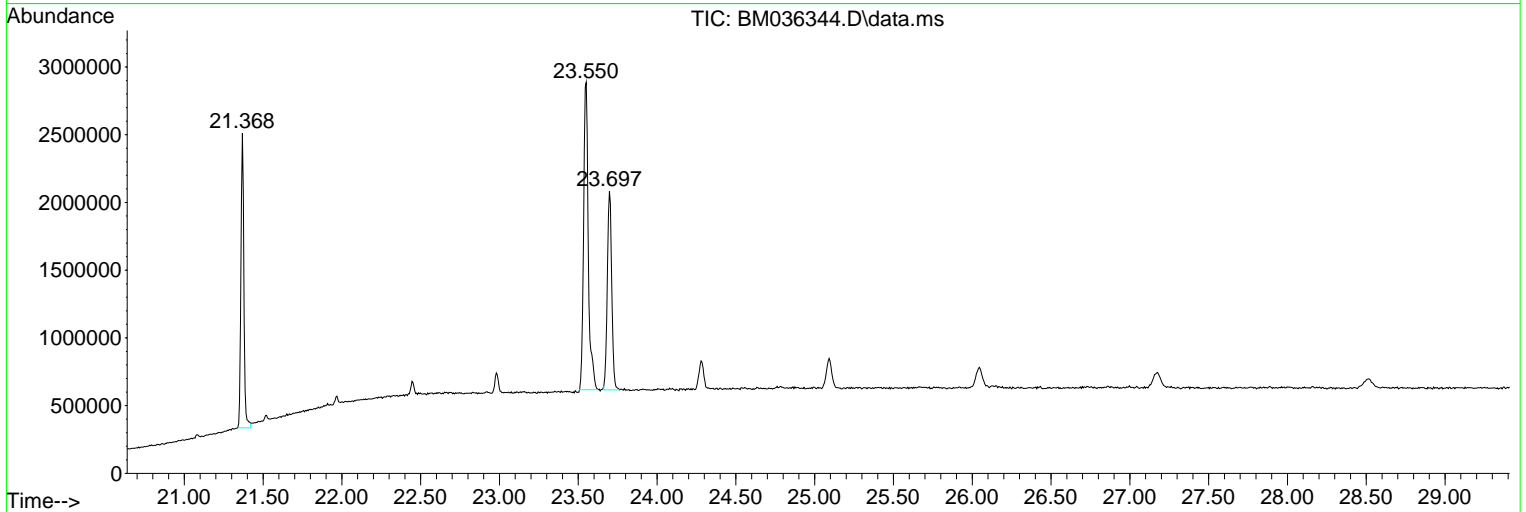
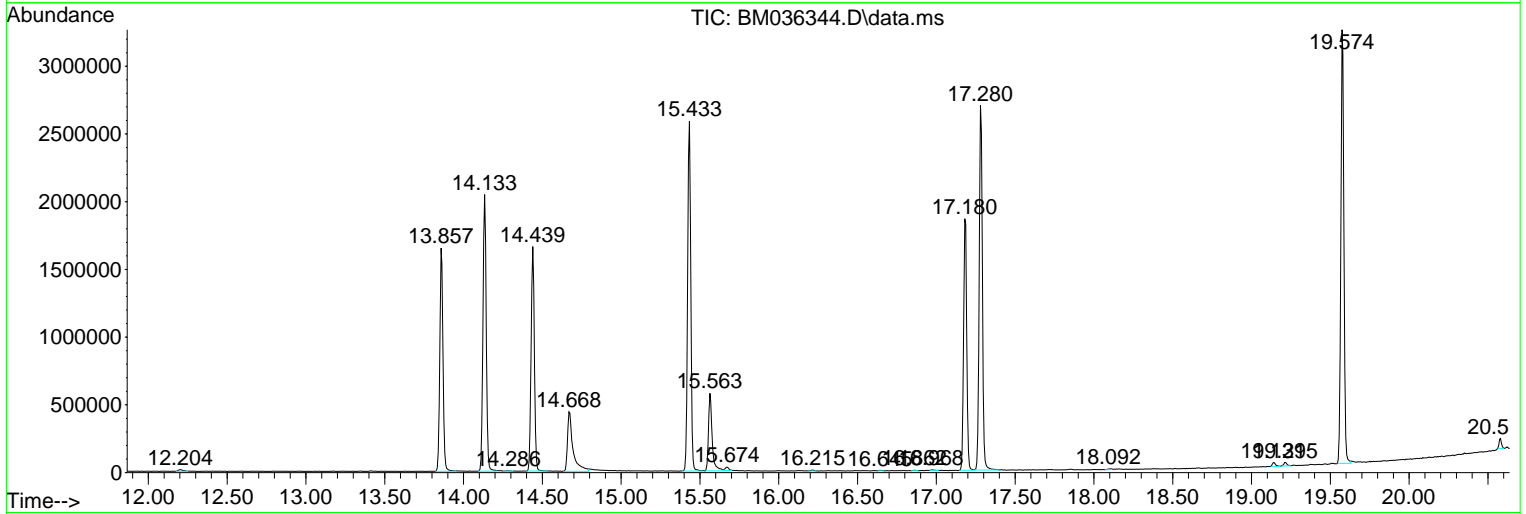
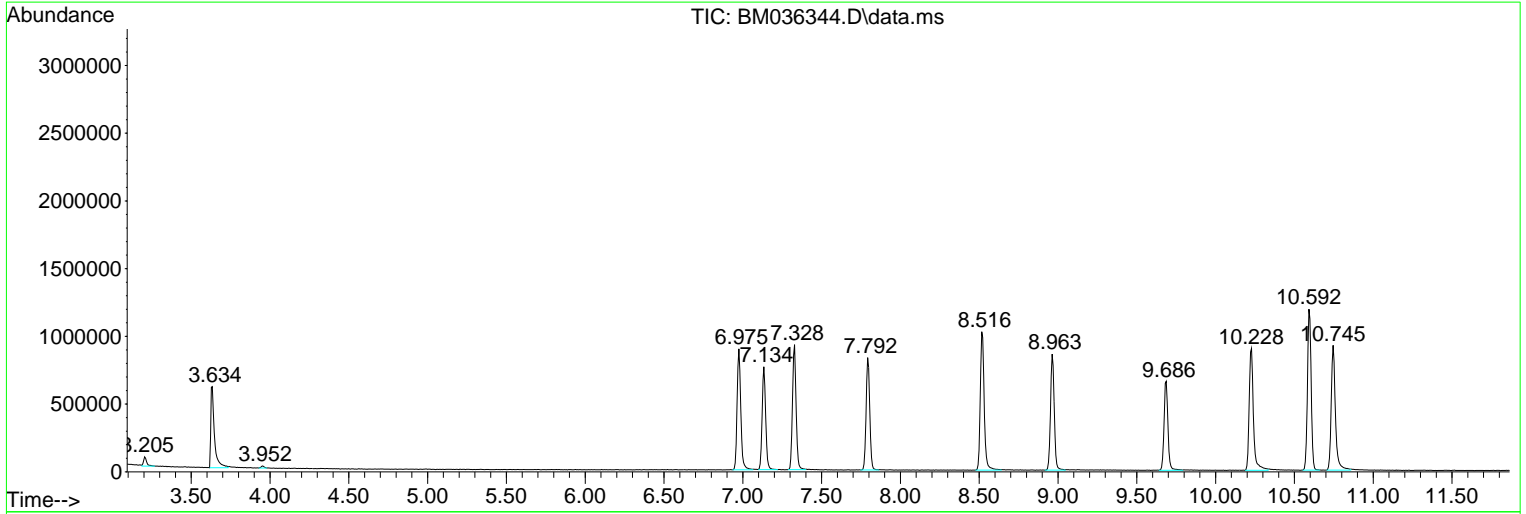
Sum of corrected areas: 50650324

Data Path : Z:\svoasrv\HPCHEM1\BNA_M\Data\BM081822\
 Data File : BM036344.D
 Acq On : 18 Aug 2022 12:16
 Operator : CG/JU
 Sample : PB146656BL
 Misc :
 ALS Vial : 3 Sample Multiplier: 1

Instrument :
 BNA_M
ClientSampleId :
 SBLK656

Quant Method : Z:\svoasrv\HPCHEM1\BNA_M\Methods\SFAM-EPA-BM081622.M
 Quant Title : SVOA CALIBRATION

TIC Library : C:\Database\NIST20.L
 TIC Integration Parameters: LSCINT.P



Data Path : Z:\svoasrv\HPCHEM1\BNA_M\Data\BM081822\
Data File : BM036344.D
Acq On : 18 Aug 2022 12:16
Operator : CG/JU
Sample : PB146656BL
Misc :
ALS Vial : 3 Sample Multiplier: 1

Instrument :
BNA_M
ClientSampleId :
SBLK656

Quant Method : Z:\svoasrv\HPCHEM1\BNA_M\Methods\SFAM-EPA-BM081622.M
Quant Title : SVOA CALIBRATION

TIC Library : C:\Database\NIST20.L
TIC Integration Parameters: LSCINT.P

No Library Search Compounds Detected

Data Path : Z:\svoasrv\HPCHEM1\BNA_M\Data\BM081822\
Data File : BM036344.D
Acq On : 18 Aug 2022 12:16
Operator : CG/JU
Sample : PB146656BL
Misc :
ALS Vial : 3 Sample Multiplier: 1

Instrument :
BNA_M
ClientSampleId :
SBLK656

Quant Method : Z:\svoasrv\HPCHEM1\BNA_M\Methods\SFAM-EPA-BM081622.M
Quant Title : SVOA CALIBRATION

TIC Library : C:\Database\NIST20.L
TIC Integration Parameters: LSCINT.P

TIC Top Hit name	RT	EstConc	Units	Response	#	RT	Resp	Conc
------------------	----	---------	-------	----------	---	----	------	------

-----|