

Data Path : Z:\HPCHEM1\BNA_M\DATA\BM081916\
 Data File : BM007205.D
 Acq On : 18 Aug 2016 15:15
 Operator : UM/SJ
 Sample : H4436-14
 Misc :
 ALS Vial : 6 Sample Multiplier: 1

Instrument :
 BNA_M
 ClientSampleId :
 DA213

Quant Time: Aug 19 04:27:19 2016
 Quant Method : Z:\HPCHEM1\BNA_M\METHODS\SOM02.2-EPA-BM081116.M
 Quant Title : SVOA CALIBRATION
 QLast Update : Fri Aug 19 04:26:41 2016
 Response via : Initial Calibration

Internal Standards	R.T.	QIon	Response	Conc	Units	Dev(Min)
1) 1,4-Dichlorobenzene-d4	7.80	152	227444	20.00	ng/ul	0.00
18) Naphthalene-d8	10.59	136	924859	20.00	ng/ul	0.00
35) Acenaphthene-d10	14.43	164	525400	20.00	ng/ul	0.00
61) Phenanthrene-d10	17.17	188	1264173	20.00	ng/ul	0.00
75) Chrysene-d12	21.36	240	1662213	20.00	ng/ul	0.00
83) Perylene-d12	23.63	264	1779575	20.00	ng/ul	0.00

System Monitoring Compounds

3) 1,4-Dioxane-d8	3.32	96	9735	1.87	ng/uL	0.00
5) Phenol-d5	6.97	99	193083	10.48	ng/ul	0.00
7) Bis-(2-Chloroethyl)ether-d	7.14	67	117247	11.10	ng/ul	0.00
9) 2-Chlorophenol-d4	7.34	132	155669	10.61	ng/ul	0.00
13) 4-Methylphenol-d8	8.50	113	159745	10.54	ng/ul	0.00
19) Nitrobenzene-d5	8.96	128	71439	10.64	ng/ul	0.00
22) 2-Nitrophenol-d4	9.67	143	76509	10.66	ng/ul	0.00
26) 2,4-Dichlorophenol-d3	10.21	165	159728	10.63	ng/ul	0.00
29) 4-Chloroaniline-d4	10.72	131	133412	7.46	ng/ul	0.00
43) Dimethylphthalate-d6	13.84	166	514299	11.85	ng/ul	0.00
46) Acenaphthylene-d8	14.13	160	615426	11.80	ng/ul	0.00
51) 4-Nitrophenol-d4	14.63	143	66430	8.54	ng/ul	0.00
57) Fluorene-d10	15.43	176	461440	12.16	ng/ul	0.00
62) 4,6-Dinitro-2-methylphenol	15.54	200	55453	7.94	ng/ul	0.00
70) Anthracene-d10	17.27	188	753057	12.86	ng/ul	0.00
76) Pyrene-d10	19.57	212	939721	13.39	ng/ul	0.00
87) Benzo(a)pyrene-d12	23.49	264	1064271	13.07	ng/ul	0.00

Target Compounds

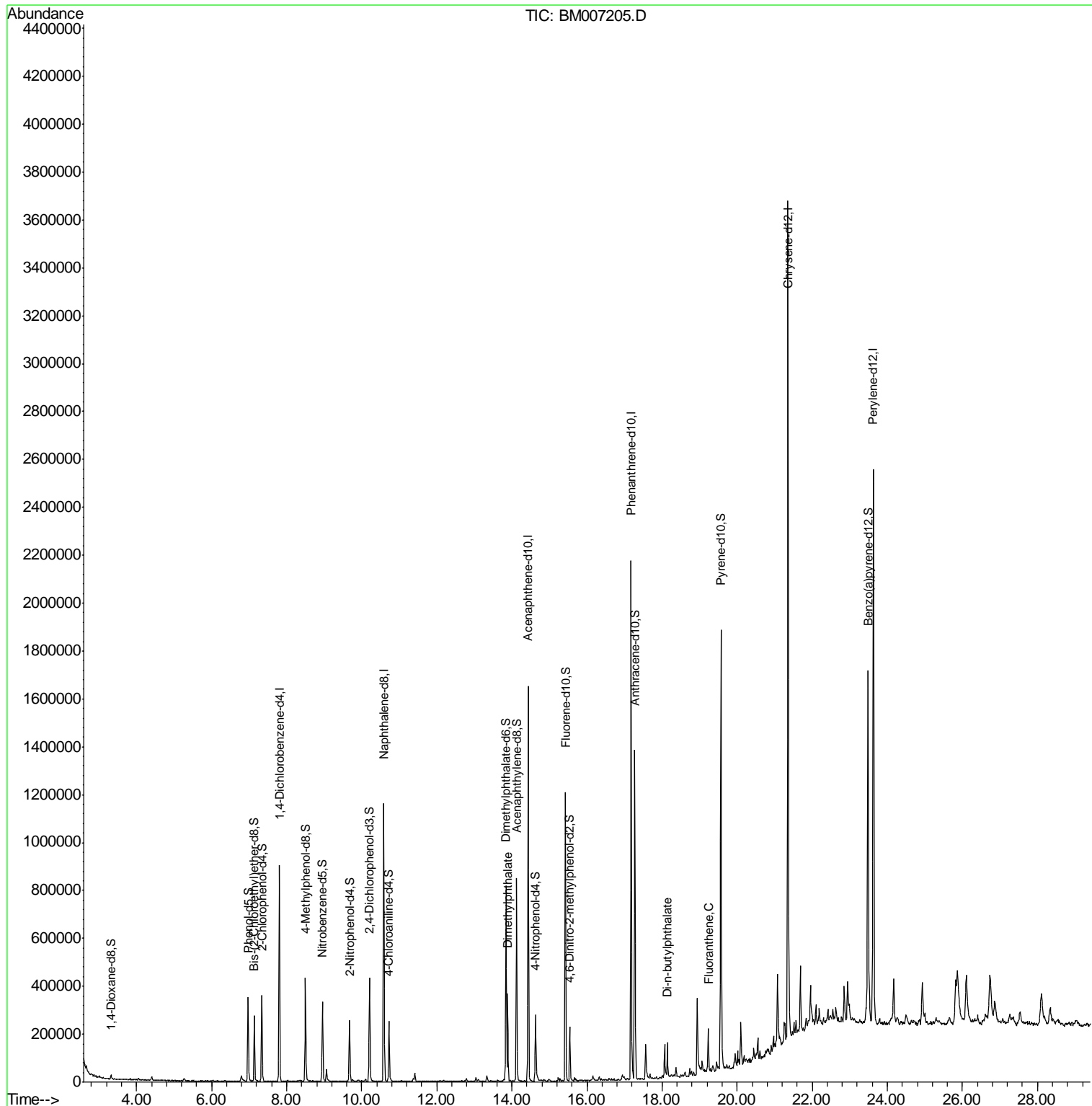
Target Compounds	R.T.	QIon	Response	Conc	Units	Qvalue
44) Dimethylphthalate	13.89	163	223846	5.16	ng/ul	99
73) Di-n-butylphthalate	18.14	149	105991	1.44	ng/ul	98
74) Fluoranthene	19.23	202	88279	1.07	ng/ul	97

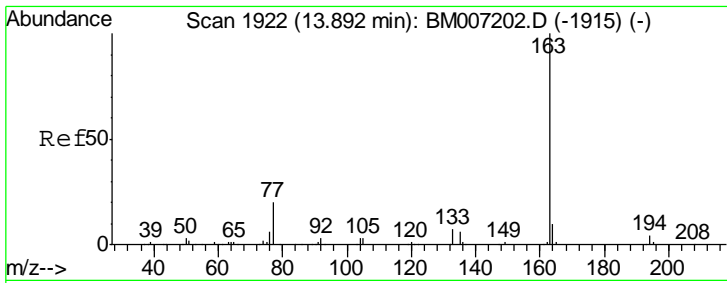
(#) = qualifier out of range (m) = manual integration (+) = signals summed

Data Path : Z:\HPCHEM1\BNA_M\DATA\BM081916\
 Data File : BM007205.D
 Acq On : 18 Aug 2016 15:15
 Operator : UM/SJ
 Sample : H4436-14
 Misc :
 ALS Vial : 6 Sample Multiplier: 1

Instrument :
 BNA_M
 ClientSampleId :
 DA213

Quant Time: Aug 19 04:27:19 2016
 Quant Method : Z:\HPCHEM1\BNA_M\METHODS\SOM02.2-EPA-BM081116.M
 Quant Title : SVOA CALIBRATION
 QLast Update : Fri Aug 19 04:26:41 2016
 Response via : Initial Calibration

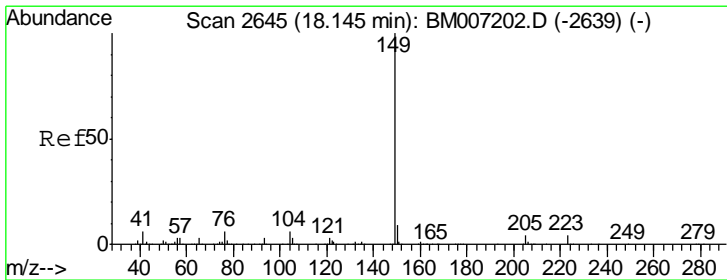
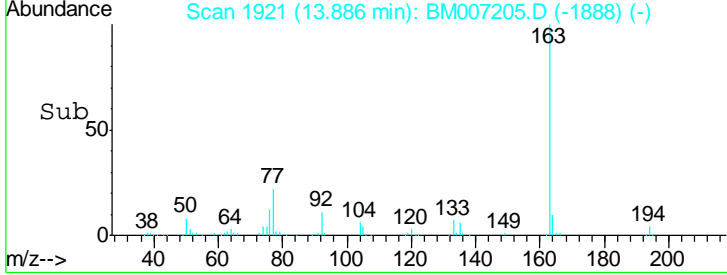
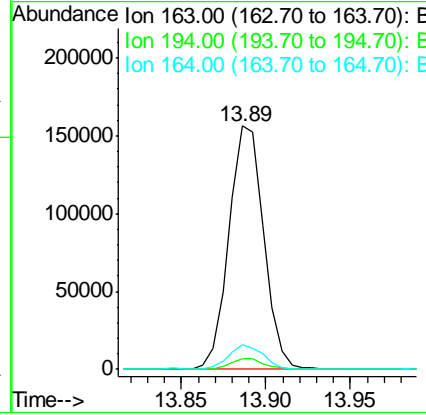
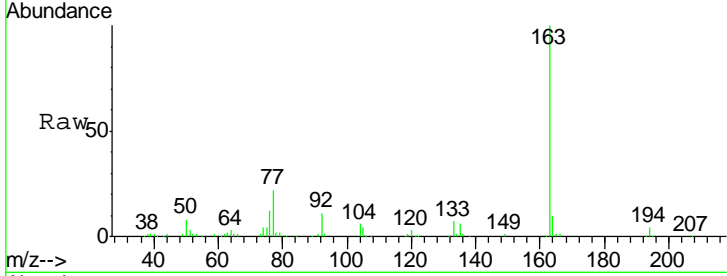




#44
 Dimethylphthalate
 Concen: 5.16 ng/ul
 RT: 13.89 min Scan# 1921
 Delta R.T. -0.01 min
 Lab File: BM007205.D
 Acq: 18 Aug 2016 15:15

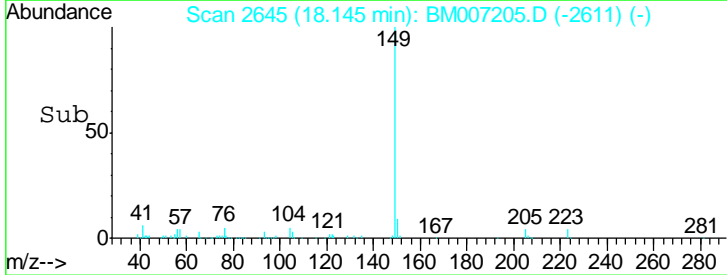
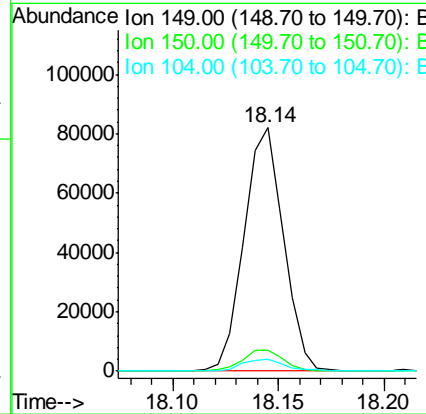
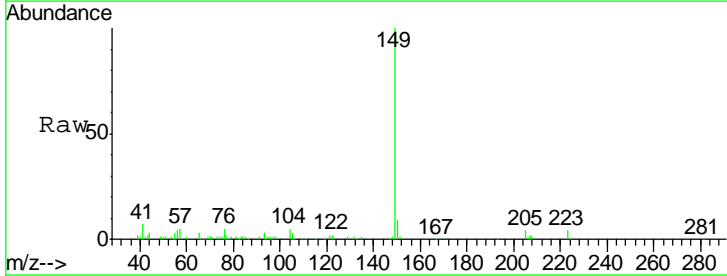
Instrument :
 BNA_M
 ClientSampled :
 DA213

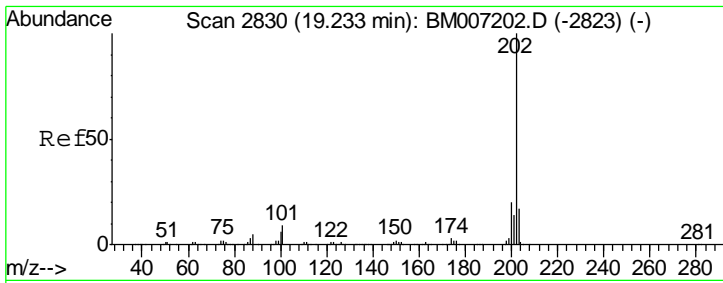
Tgt Ion	Resp	Lower	Upper
163	100		
194	4.2	3.4	5.2
164	10.2	7.8	11.8



#73
 Di-n-butylphthalate
 Concen: 1.44 ng/ul
 RT: 18.14 min Scan# 2645
 Delta R.T. -0.00 min
 Lab File: BM007205.D
 Acq: 18 Aug 2016 15:15

Tgt Ion	Resp	Lower	Upper
149	100		
150	8.8	7.6	11.4
104	5.0	4.6	7.0





#74
 Fluoranthene
 Concen: 1.07 ng/ul
 RT: 19.23 min Scan# 2830
 Delta R.T. -0.00 min
 Lab File: BM007205.D
 Acq: 18 Aug 2016 15:15

Instrument :
 BNA_M
 ClientSampled :
 DA213

Tgt Ion	Resp	Lower	Upper
202	88279		
101	10.1	6.9	10.3
100	7.2	5.4	8.0

