

Data Path : Z:\HPCHEM1\BNA_M\DATA\BM081916\
 Data File : BM007213.D
 Acq On : 18 Aug 2016 20:39
 Operator : UM/SJ
 Sample : H4445-07
 Misc :
 ALS Vial : 14 Sample Multiplier: 1

Instrument :
 BNA_M
 ClientSampled :
 E5N26

Integration Parameters: LSCINT.P

Integrator: RTE
 Smoothing : OFF
 Sampling : 1
 Start Thrs: 0.2
 Stop Thrs : 0

Filtering: 5
 Min Area: 1 % of largest Peak
 Max Peaks: 100
 Peak Location: TOP

If leading or trailing edge < 100 prefer < Baseline drop else tangent >
 Peak separation: 5

Method : Z:\HPCHEM1\BNA_M\METHODS\SOM02.2-EPA-BM081116.M
 Title : SVOA CALIBRATION

Signal : TIC

peak #	R.T. min	first scan	max scan	last scan	PK TY	peak height	corr. area	corr. % max.	% of total
1	6.969	737	745	753	rBV	697524	1117169	18.29%	1.739%
2	7.140	767	774	781	rBV	501462	793206	12.99%	1.234%
3	7.334	800	807	817	rVB	715930	1148265	18.80%	1.787%
4	7.804	877	887	894	rBV	837197	1378077	22.56%	2.145%
5	8.498	996	1005	1015	rBV	838223	1368231	22.40%	2.129%
6	8.957	1075	1083	1091	rBV	643512	1047383	17.15%	1.630%
7	9.675	1196	1205	1216	rBV	521754	889428	14.56%	1.384%
8	10.204	1288	1295	1306	rBV	852604	1443160	23.63%	2.246%
9	10.586	1352	1360	1367	rBV	1126429	1909564	31.26%	2.972%
10	10.722	1376	1383	1398	rBV	720525	1288989	21.10%	2.006%
11	13.839	1904	1913	1918	rBV	1440551	2131696	34.90%	3.317%
12	13.886	1918	1921	1931	rVB	488004	699829	11.46%	1.089%
13	14.127	1951	1962	1975	rBV	1592490	2663889	43.61%	4.146%
14	14.433	2005	2014	2022	rBV2	1624229	2519750	41.25%	3.921%
15	14.627	2040	2047	2058	rBV	644811	1058536	17.33%	1.647%
16	15.427	2176	2183	2189	rBV	2157186	3169030	51.88%	4.932%
17	15.545	2196	2203	2210	rBV	492553	735663	12.04%	1.145%
18	15.921	2258	2267	2275	rVB5	28158	75500	1.24%	0.117%
19	16.151	2300	2306	2307	rBV2	88926	113586	1.86%	0.177%
20	16.168	2307	2309	2316	rVB	123613	164127	2.69%	0.255%
21	16.939	2437	2440	2446	rVV2	61253	133868	2.19%	0.208%
22	16.992	2446	2449	2459	rVB4	43192	84856	1.39%	0.132%
23	17.174	2474	2480	2485	rBV2	2155355	3148496	51.55%	4.900%
24	17.215	2485	2487	2491	rVB	110496	121575	1.99%	0.189%
25	17.274	2491	2497	2502	rBV2	2433801	3613035	59.15%	5.623%
26	17.580	2540	2549	2552	rBV5	30422	69677	1.14%	0.108%
27	18.068	2626	2632	2635	rBV4	115739	201323	3.30%	0.313%
28	18.092	2635	2636	2642	rVB	63427	73374	1.20%	0.114%
29	18.180	2647	2651	2655	rVV	60217	96389	1.58%	0.150%
30	18.245	2657	2662	2666	rVV3	69309	147137	2.41%	0.229%
31	18.968	2779	2785	2788	rBV	71834	125150	2.05%	0.195%
32	19.109	2804	2809	2817	rBV2	122658	214436	3.51%	0.334%
33	19.233	2821	2830	2835	rVV	1112463	1565589	25.63%	2.436%
34	19.380	2852	2855	2859	rVB2	52717	68668	1.12%	0.107%

Data Path : Z:\HPCHEM1\BNA_M\DATA\BM081916\
 Data File : BM007213.D
 Acq On : 18 Aug 2016 20:39
 Operator : UM/SJ
 Sample : H4445-07
 Misc :
 ALS Vial : 14 Sample Multiplier: 1

Instrument :
 BNA_M
 ClientSampleId :
 E5N26

Integration Parameters: LSCINT.P
 Integrator: RTE
 Smoothing : OFF
 Sampling : 1
 Start Thrs: 0.2
 Stop Thrs : 0

Filtering: 5
 Min Area: 1 % of largest Peak
 Max Peaks: 100
 Peak Location: TOP

If leading or trailing edge < 100 prefer < Baseline drop else tangent >
 Peak separation: 5

Method : Z:\HPCHEM1\BNA_M\METHODS\SOM02.2-EPA-BM081116.M
 Title : SVOA CALIBRATION

35	19.568	2880	2887	2890	rBV	3516359	5383517	88.14%	8.378%
36	19.668	2900	2904	2911	rVB2	76020	137592	2.25%	0.214%
37	19.774	2918	2922	2928	rVB	80018	121428	1.99%	0.189%
38	19.921	2941	2947	2955	rBV5	139592	344835	5.65%	0.537%
39	20.056	2965	2970	2972	rBV4	107398	200491	3.28%	0.312%
40	20.092	2972	2976	2982	rVB	281380	432774	7.09%	0.673%
41	20.192	2988	2993	2996	rBV	215020	289195	4.73%	0.450%
42	20.245	2996	3002	3007	rVV2	198638	359427	5.88%	0.559%
43	20.286	3007	3009	3013	rVB2	56220	61311	1.00%	0.095%
44	20.386	3023	3026	3030	rBV	92136	128704	2.11%	0.200%
45	20.439	3030	3035	3038	rVV3	98399	152511	2.50%	0.237%
46	20.797	3093	3096	3099	rBV3	53434	73782	1.21%	0.115%
47	20.839	3099	3103	3108	rVB	127177	192389	3.15%	0.299%
48	21.003	3128	3131	3134	rVB	93810	110980	1.82%	0.173%
49	21.039	3134	3137	3140	rBV	155875	196831	3.22%	0.306%
50	21.074	3140	3143	3149	rVB3	214683	322472	5.28%	0.502%
51	21.244	3169	3172	3175	rBV2	64041	71404	1.17%	0.111%
52	21.356	3183	3191	3195	rBV2	3669276	6108160	100.00%	9.506%
53	21.392	3195	3197	3204	rVB	757139	902440	14.77%	1.404%
54	21.509	3214	3217	3223	rBV	153603	235913	3.86%	0.367%
55	21.662	3240	3243	3249	rVB4	92370	147648	2.42%	0.230%
56	21.909	3282	3285	3289	rVB	158772	195699	3.20%	0.305%
57	22.944	3455	3461	3466	rBV	866397	2095519	34.31%	3.261%
58	23.115	3486	3490	3497	rVB	177121	321433	5.26%	0.500%
59	23.433	3539	3544	3547	rBV	403160	714160	11.69%	1.111%
60	23.485	3547	3553	3558	rBV2	2366949	4400927	72.05%	6.849%
61	23.627	3570	3577	3583	rBV	2156311	4274563	69.98%	6.652%
62	25.915	3960	3966	3976	rVB3	308256	903278	14.79%	1.406%

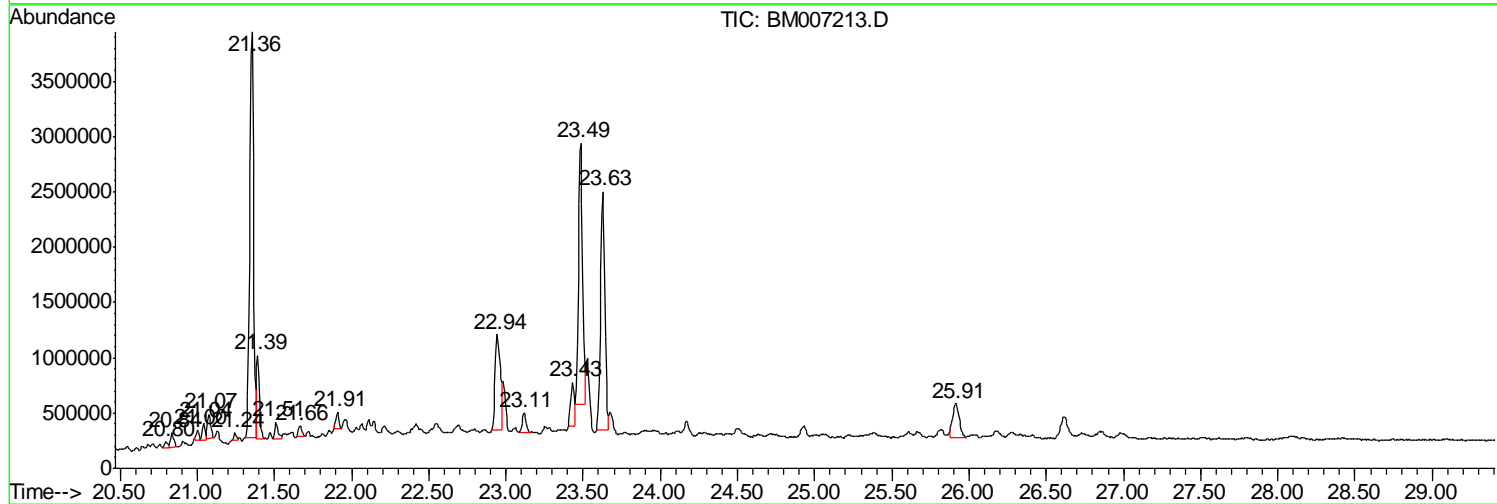
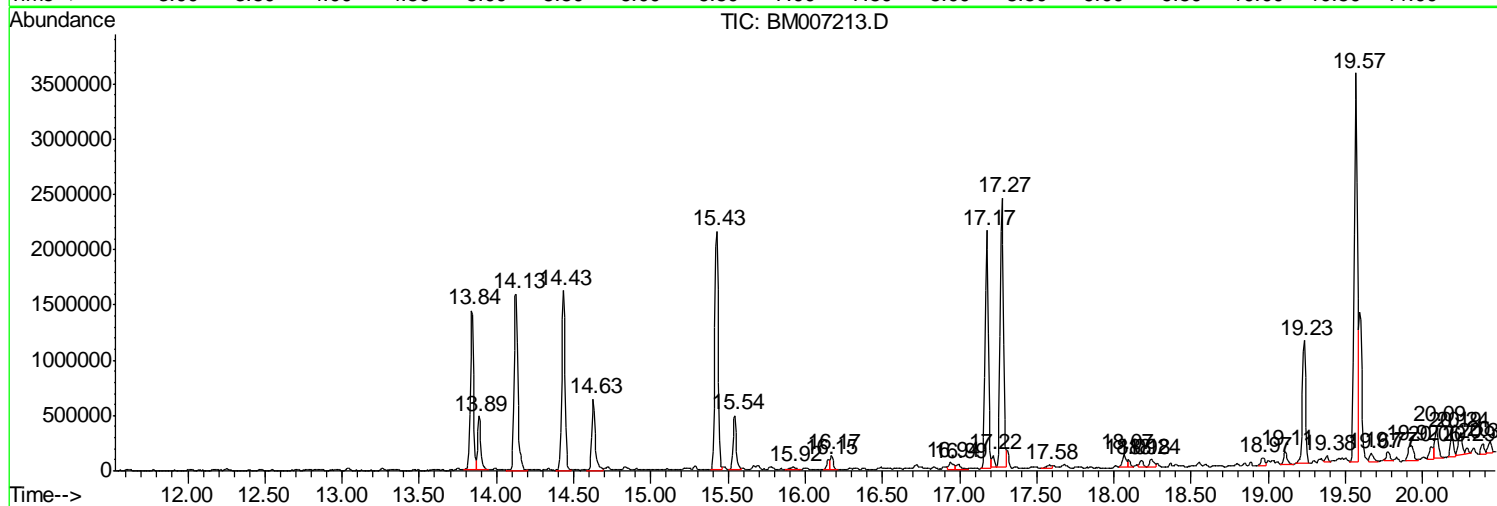
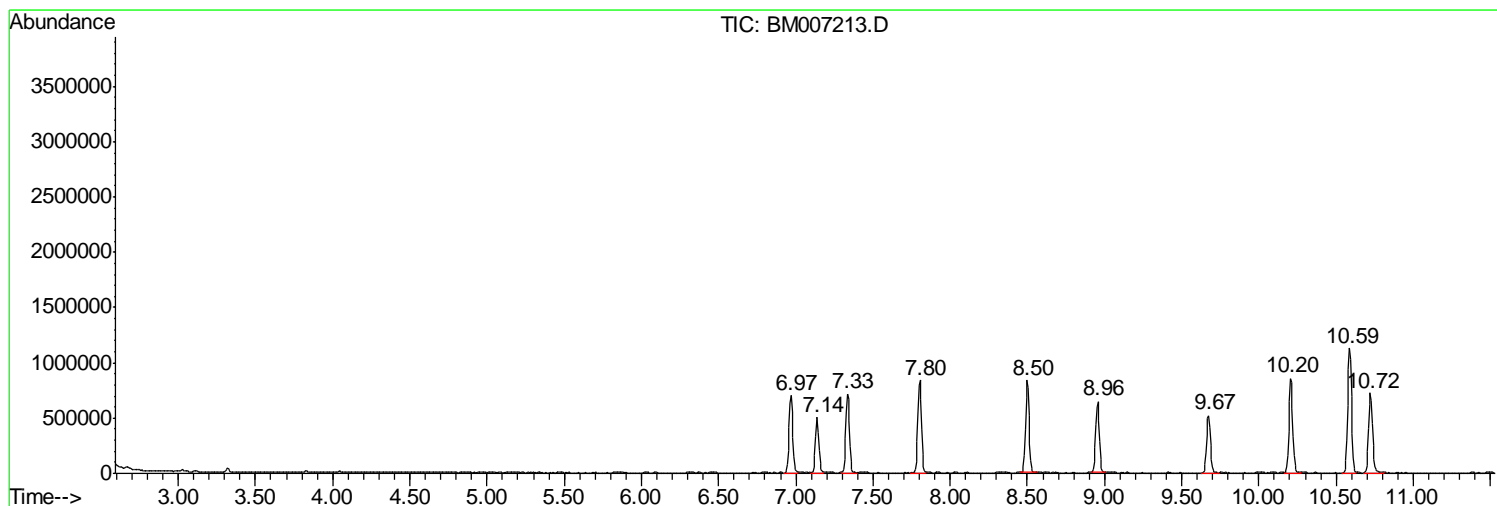
Sum of corrected areas: 64258034

Data Path : Z:\HPCHEM1\BNA_M\DATA\BM081916\
 Data File : BM007213.D
 Acq On : 18 Aug 2016 20:39
 Operator : UM/SJ
 Sample : H4445-07
 Misc :
 ALS Vial : 14 Sample Multiplier: 1

Instrument :
 BNA_M
 ClientSampled :
 E5N26

Quant Method : Z:\HPCHEM1\BNA_M\METHODS\SOM02.2-EPA-BM081116.M
 Quant Title : SVOA CALIBRATION

TIC Library : C:\DATABASE\NIST11.L
 TIC Integration Parameters: LSCINT.P



Data Path : Z:\HPCHEM1\BNA_M\DATA\BM081916\
 Data File : BM007213.D
 Acq On : 18 Aug 2016 20:39
 Operator : UM/SJ
 Sample : H4445-07
 Misc :
 ALS Vial : 14 Sample Multiplier: 1

Instrument :
 BNA_M
 ClientSampled :
 E5N26

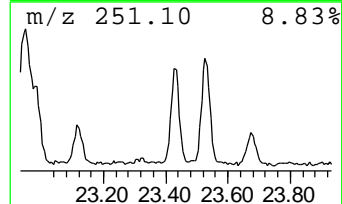
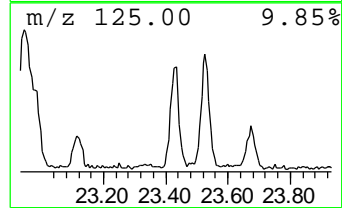
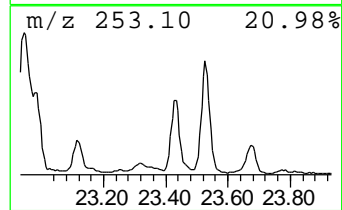
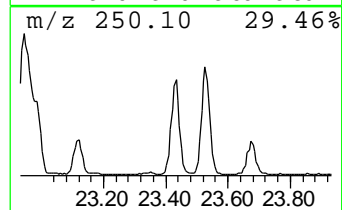
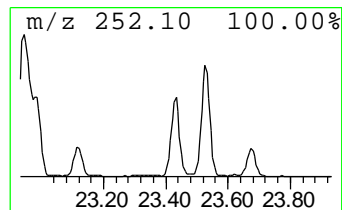
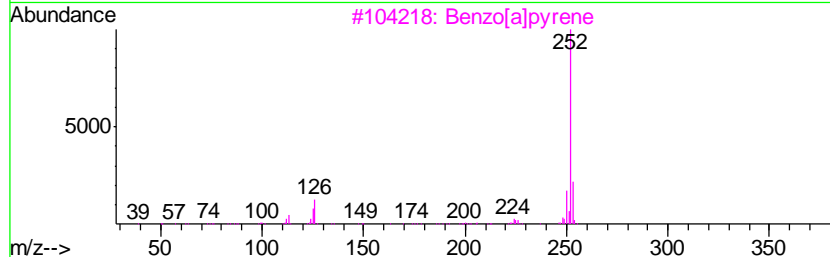
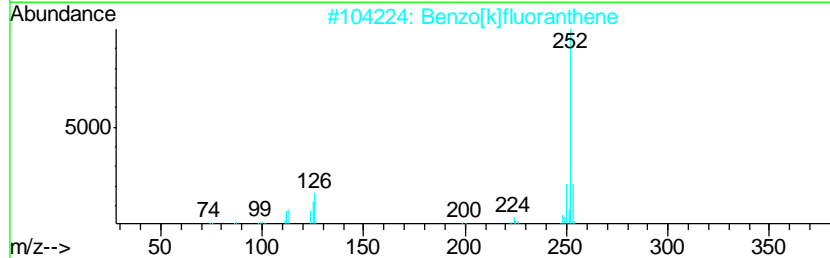
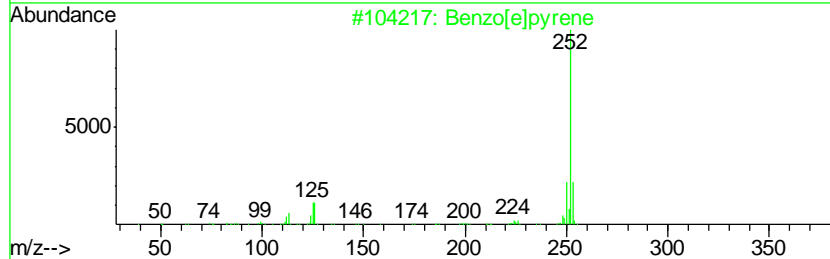
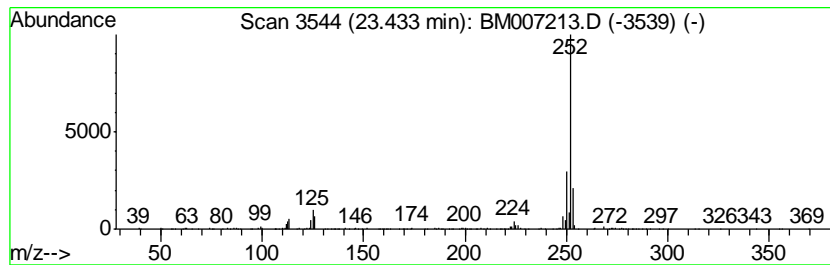
Quant Method : Z:\HPCHEM1\BNA_M\METHODS\SOM02.2-EPA-BM081116.M
 Quant Title : SVOA CALIBRATION

TIC Library : C:\DATABASE\NIST11.L
 TIC Integration Parameters: LSCINT.P

 Peak Number 1 Benzo[e]pyrene Concentration Rank 1

R.T.	EstConc	Area	Relative to ISTD	R.T.
23.43	3.34 ng/ul	714160	Perylene-d12	23.63

Hit#	of	Tentative ID	MW	MolForm	CAS#	Qual
1	5	Benzo[e]pyrene	252	C20H12	000192-97-2	95
2		Benzo[k]fluoranthene	252	C20H12	000207-08-9	90
3		Benzo[a]pyrene	252	C20H12	000050-32-8	90
4		Perylene	252	C20H12	000198-55-0	81
5		Perylene	252	C20H12	000198-55-0	76



Data Path : Z:\HPCHEM1\BNA_M\DATA\BM081916\
Data File : BM007213.D
Acq On : 18 Aug 2016 20:39
Operator : UM/SJ
Sample : H4445-07
Misc :
ALS Vial : 14 Sample Multiplier: 1

Instrument :
BNA_M
ClientSampleId :
E5N26

Quant Method : Z:\HPCHEM1\BNA_M\METHODS\SOM02.2-EPA-BM081116.M
Quant Title : SVOA CALIBRATION

TIC Library : C:\DATABASE\NIST11.L
TIC Integration Parameters: LSCINT.P

TIC Top Hit name	RT	EstConc	Units	Response	--Internal Standard--			
					#	RT	Resp	Conc
Benzo[e]pyrene	23.43	3.3	ng/ul	714160	6	23.63	4274560	20.0