

Data Path : Z:\HPCHEM1\BNA_M\DATA\BM081916\
 Data File : BM007218.D
 Acq On : 18 Aug 2016 23:39
 Operator : UM/SJ
 Sample : H4423-17
 Misc :
 ALS Vial : 19 Sample Multiplier: 1

Instrument :
 BNA_M
 ClientSampled :
 BD2R4

Integration Parameters: LSCINT.P
 Integrator: RTE
 Smoothing : OFF
 Sampling : 1
 Start Thrs: 0.2
 Stop Thrs : 0

Filtering: 5
 Min Area: 1 % of largest Peak
 Max Peaks: 100
 Peak Location: TOP

If leading or trailing edge < 100 prefer < Baseline drop else tangent >
 Peak separation: 5

Method : Z:\HPCHEM1\BNA_M\METHODS\SOM02.2-EPA-BM081116.M
 Title : SVOA CALIBRATION

Signal : TIC

peak #	R.T. min	first scan	max scan	last scan	PK TY	peak height	corr. area	corr. % max.	% of total
1	3.316	120	124	131	rVB	41130	56019	1.02%	0.102%
2	4.946	395	401	408	rBV	129731	193020	3.53%	0.351%
3	6.969	738	745	753	rBV	746435	1185320	21.66%	2.153%
4	7.139	766	774	783	rBV	550930	870997	15.92%	1.582%
5	7.334	801	807	819	rVB	776607	1268952	23.19%	2.305%
6	7.804	880	887	896	rBV	1117099	1804584	32.98%	3.278%
7	8.498	995	1005	1014	rBV	892756	1474241	26.94%	2.678%
8	8.957	1076	1083	1091	rBV	668054	1133228	20.71%	2.059%
9	9.675	1198	1205	1213	rBV	548995	946306	17.29%	1.719%
10	10.204	1289	1295	1307	rBV	880386	1529338	27.95%	2.778%
11	10.586	1351	1360	1369	rBV	1428562	2442273	44.63%	4.437%
12	10.722	1376	1383	1398	rBV	817254	1411330	25.79%	2.564%
13	13.839	1907	1913	1918	rBV	1472721	2130499	38.94%	3.871%
14	13.886	1918	1921	1931	rVB	377757	517833	9.46%	0.941%
15	14.127	1955	1962	1972	rBV	1647496	2528542	46.21%	4.594%
16	14.433	2007	2014	2026	rVB2	2121345	3211609	58.69%	5.835%
17	14.627	2041	2047	2068	rBV	400894	703920	12.86%	1.279%
18	15.427	2176	2183	2195	rVB	2226184	3238662	59.19%	5.884%
19	15.545	2197	2203	2215	rBV	328656	493218	9.01%	0.896%
20	16.145	2300	2305	2313	rBV	51919	89486	1.64%	0.163%
21	17.174	2473	2480	2487	rBV2	2690163	3969515	72.55%	7.212%
22	17.274	2490	2497	2508	rVB	2454544	3443433	62.93%	6.256%
23	18.068	2627	2632	2635	rBV3	57261	78745	1.44%	0.143%
24	19.568	2880	2887	2900	rBV	3014712	4433865	81.03%	8.055%
25	21.068	3138	3142	3151	rBV2	179645	306857	5.61%	0.557%
26	21.356	3185	3191	3202	rBV	4358501	5471738	100.00%	9.941%
27	23.480	3546	3552	3564	rVB2	2354833	4719278	86.25%	8.574%
28	23.633	3570	3578	3587	rVB	2712670	5390667	98.52%	9.793%

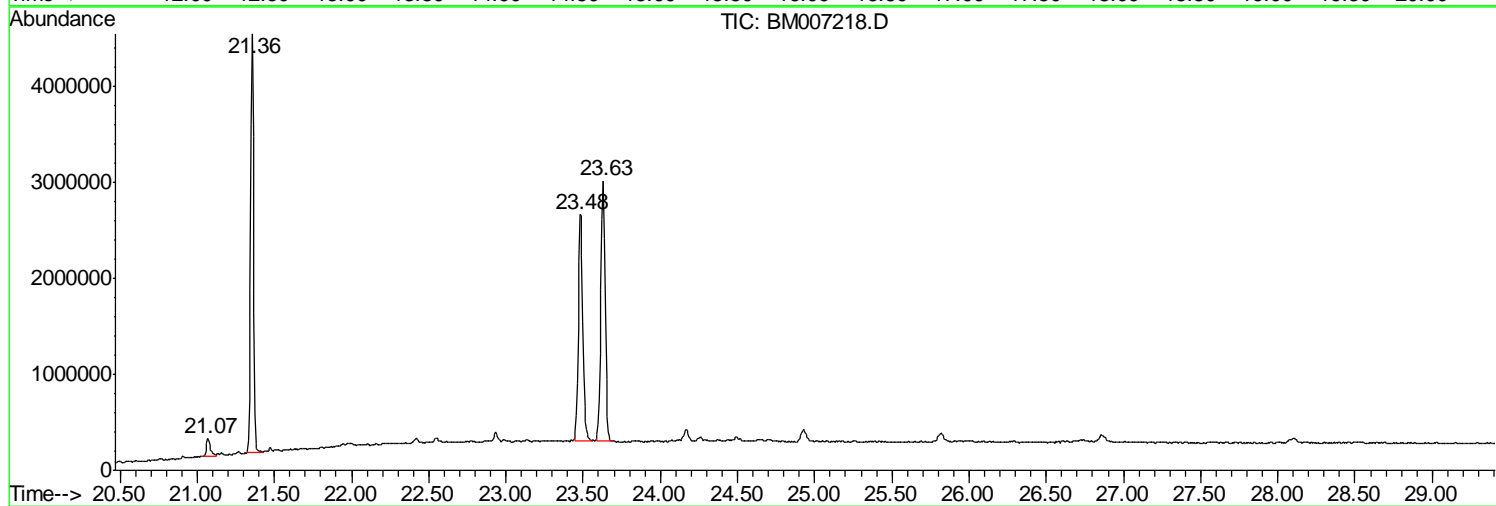
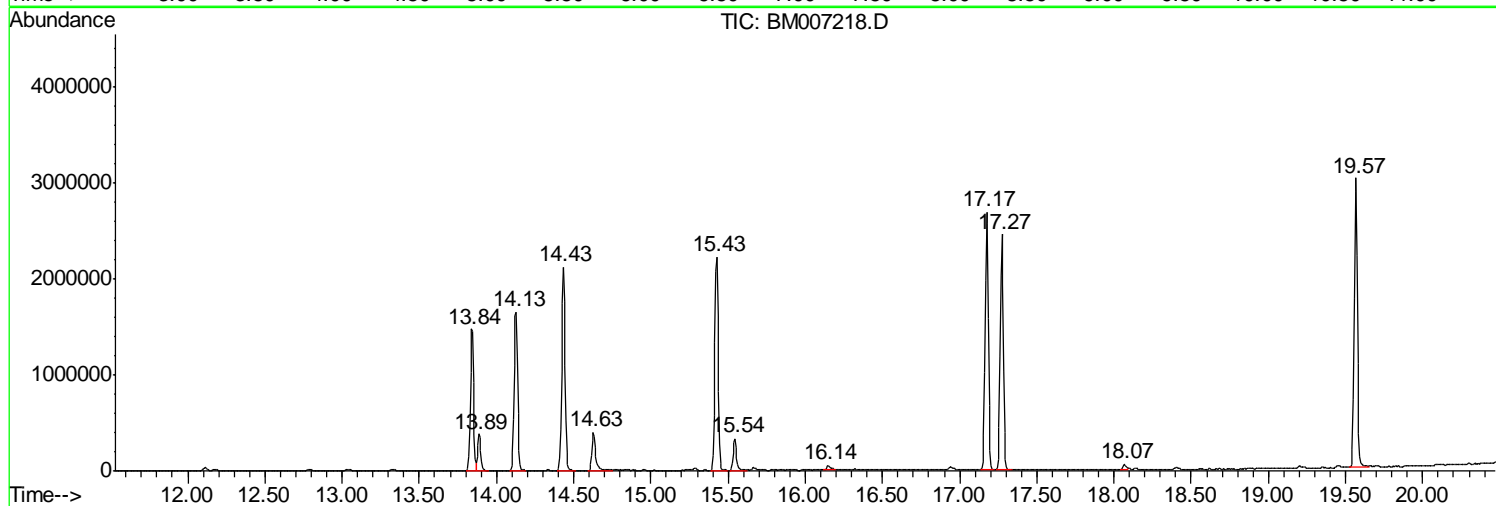
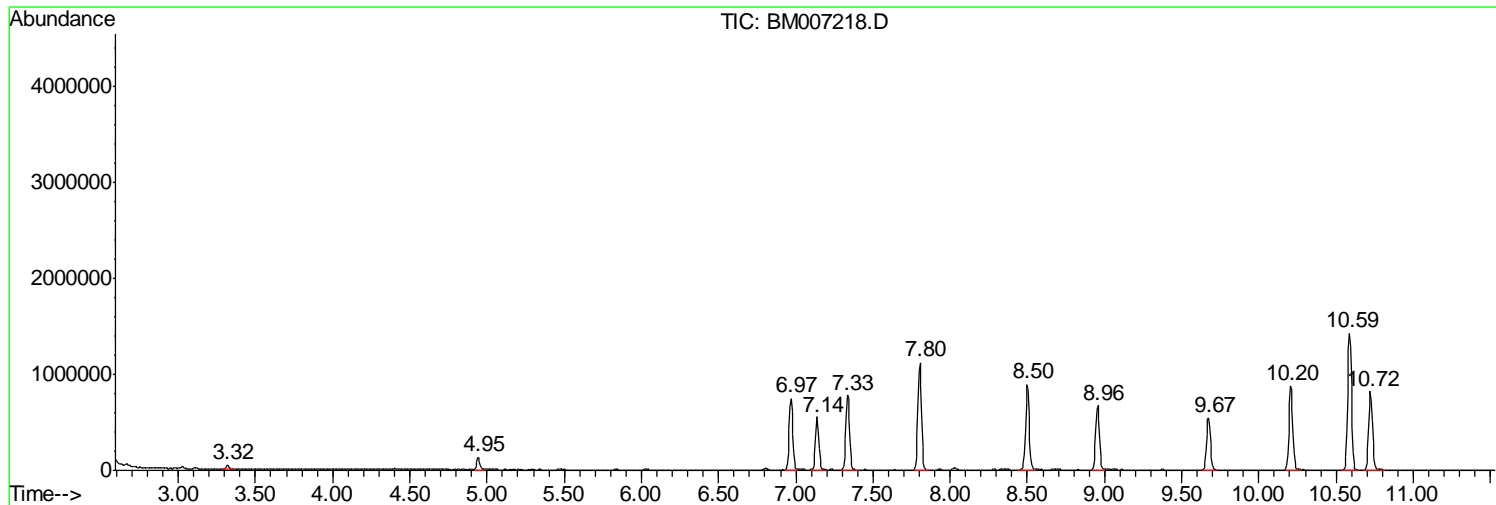
Sum of corrected areas: 55043475

Data Path : Z:\HPCHEM1\BNA_M\DATA\BM081916\
Data File : BM007218.D
Acq On : 18 Aug 2016 23:39
Operator : UM/SJ
Sample : H4423-17
Misc :
ALS Vial : 19 Sample Multiplier: 1

Instrument :
BNA_M
ClientSampleId :
BD2R4

Quant Method : Z:\HPCHEM1\BNA_M\METHODS\SOM02.2-EPA-BM081116.M
Quant Title : SVOA CALIBRATION

TIC Library : C:\DATABASE\NIST11.L
TIC Integration Parameters: LSCINT.P



Data Path : Z:\HPCHEM1\BNA_M\DATA\BM081916\
 Data File : BM007218.D
 Acq On : 18 Aug 2016 23:39
 Operator : UM/SJ
 Sample : H4423-17
 Misc :
 ALS Vial : 19 Sample Multiplier: 1

Instrument :
 BNA_M
 ClientSampled :
 BD2R4

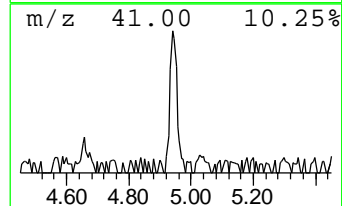
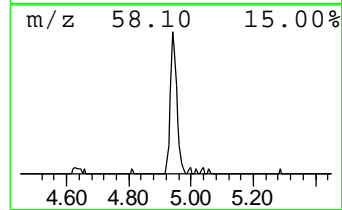
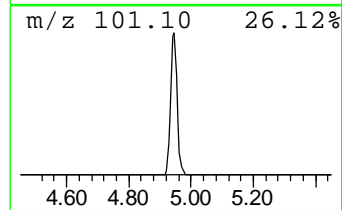
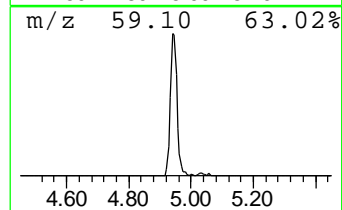
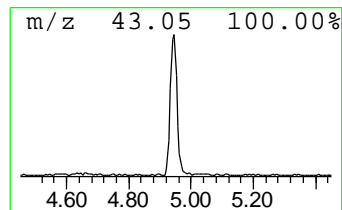
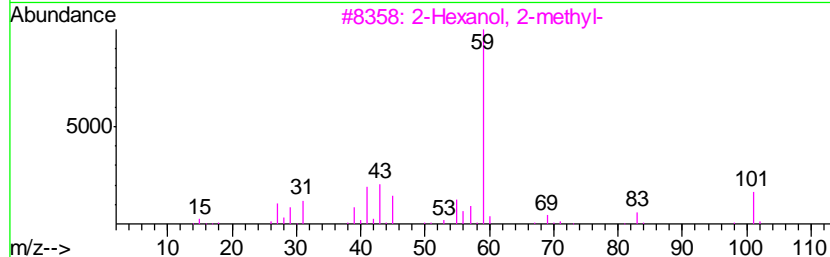
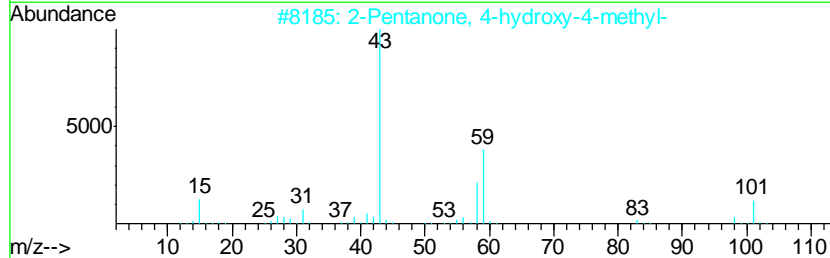
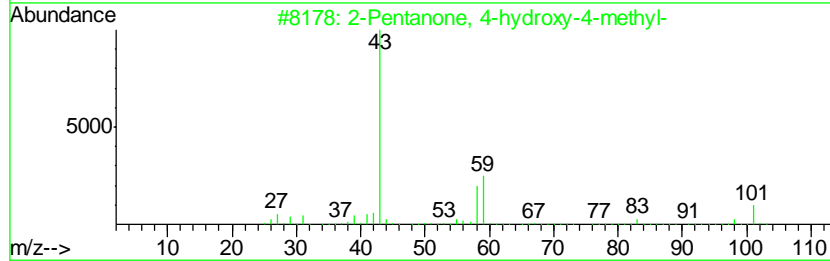
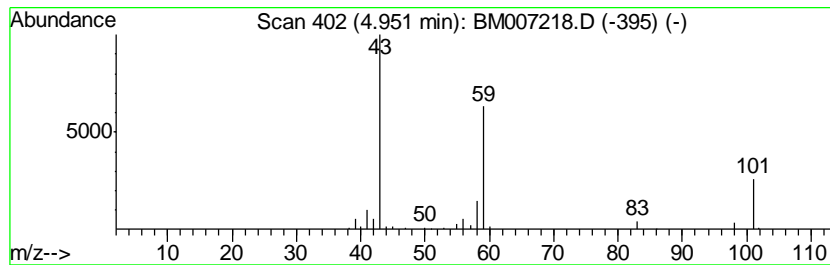
Quant Method : Z:\HPCHEM1\BNA_M\METHODS\SOM02.2-EPA-BM081116.M
 Quant Title : SVOA CALIBRATION

TIC Library : C:\DATABASE\NIST11.L
 TIC Integration Parameters: LSCINT.P

 Peak Number 1 2-Pentanone, 4-hydroxy-4-me... Concentration Rank 1

R.T.	EstConc	Area	Relative to ISTD	R.T.
4.95	2.14 ng/ul	193020	1,4-Dichlorobenzene-d4	7.80

Hit#	of	Tentative ID	MW	MolForm	CAS#	Qual
1	5	2-Pentanone, 4-hydroxy-4-methyl-	116	C6H12O2	000123-42-2	64
2		2-Pentanone, 4-hydroxy-4-methyl-	116	C6H12O2	000123-42-2	56
3		2-Hexanol, 2-methyl-	116	C7H16O	000625-23-0	38
4		2,3-Butanedione, monooxime	101	C4H7NO2	000057-71-6	25
5		Acetic acid, cyano-, 1,1-dimethy...	141	C7H11NO2	001116-98-9	17



Data Path : Z:\HPCHEM1\BNA_M\DATA\BM081916\
Data File : BM007218.D
Acq On : 18 Aug 2016 23:39
Operator : UM/SJ
Sample : H4423-17
Misc :
ALS Vial : 19 Sample Multiplier: 1

Instrument :
BNA_M
ClientSampleId :
BD2R4

Quant Method : Z:\HPCHEM1\BNA_M\METHODS\SOM02.2-EPA-BM081116.M
Quant Title : SVOA CALIBRATION

TIC Library : C:\DATABASE\NIST11.L
TIC Integration Parameters: LSCINT.P

TIC Top Hit name	RT	EstConc	Units	Response	--Internal Standard--			
					#	RT	Resp	Conc
2-Pentanone, 4-hy...	4.95	2.1	ng/ul	193020	1	7.80	1804580	20.0