

Data Path : Z:\svoasrv\HPCHEM1\BNA_M\Data\BM082222\
 Data File : BM036373.D
 Acq On : 22 Aug 2022 19:18
 Operator : CG/JU
 Sample : N4251-06
 Misc :
 ALS Vial : 14 Sample Multiplier: 1

Instrument :
 BNA_M
 ClientSampleId :
 BGN70

Integration Parameters: LSCINT.P

Integrator: RTE
 Smoothing : OFF Filtering: 5
 Sampling : 1 Min Area: 0.1 % of largest Peak
 Start Thrs: 0.2 Max Peaks: 100
 Stop Thrs : 0 Peak Location: TOP

If leading or trailing edge < 100 prefer < Baseline drop else tangent >
 Peak separation: 5

Method : Z:\svoasrv\HPCHEM1\BNA_M\Methods\SFAM-EPA-BM081622.M
 Title : SVOA CALIBRATION

Signal : TIC: BM036373.D\data.ms

peak #	R.T. min	first scan	max scan	last scan	PK TY	peak height	corr. area	corr. % max.	% of total
1	3.205	17	20	30	rVB	58888	90445	2.81%	0.241%
2	3.646	93	95	117	rBV	112966	221604	6.89%	0.589%
3	3.858	127	131	141	rVB	17224	30039	0.93%	0.080%
4	3.952	144	147	154	rVB	18048	26835	0.83%	0.071%
5	6.293	541	545	548	rBV5	2514	3489	0.11%	0.009%
6	6.910	646	650	653	rBV7	3028	4811	0.15%	0.013%
7	6.975	655	661	674	rVV	228604	410349	12.77%	1.091%
8	7.134	682	688	701	rVB	524572	838153	26.08%	2.229%
9	7.328	713	721	732	rBV	485046	817519	25.44%	2.174%
10	7.793	793	800	809	rBV	885968	1388531	43.20%	3.692%
11	7.863	809	812	817	rVB5	6838	11390	0.35%	0.030%
12	8.516	916	923	940	rBV	399576	741814	23.08%	1.973%
13	8.963	992	999	1012	rBV	564592	965541	30.04%	2.568%
14	9.345	1061	1064	1072	rVB7	5724	11090	0.35%	0.029%
15	9.687	1115	1122	1132	rBV	389662	672006	20.91%	1.787%
16	10.228	1207	1214	1230	rBV	489032	983969	30.62%	2.617%
17	10.592	1269	1276	1291	rBV	1205234	2017431	62.77%	5.365%
18	10.745	1295	1302	1320	rBV	488812	1004717	31.26%	2.672%
19	11.845	1487	1489	1493	rVB5	3186	3616	0.11%	0.010%
20	12.204	1544	1550	1558	rBV7	8725	20101	0.63%	0.053%
21	12.798	1647	1651	1654	rBV6	3065	5084	0.16%	0.014%
22	13.051	1690	1694	1697	rBV6	3725	4414	0.14%	0.012%
23	13.175	1710	1715	1716	rBV3	2621	3502	0.11%	0.009%
24	13.416	1752	1756	1762	rBV5	2545	5098	0.16%	0.014%
25	13.857	1825	1831	1848	rBV	1097388	1573014	48.94%	4.183%
26	14.133	1871	1878	1894	rBV	1322042	1962383	61.06%	5.218%
27	14.327	1909	1911	1917	rVB5	3137	4124	0.13%	0.011%
28	14.439	1923	1930	1947	rBV	1684633	2461830	76.60%	6.546%
29	14.686	1966	1972	1987	rBV3	58175	199368	6.20%	0.530%
30	15.233	2062	2065	2068	rBV4	3862	4736	0.15%	0.013%
31	15.280	2068	2073	2079	rVB6	5230	10291	0.32%	0.027%
32	15.427	2089	2098	2110	rBV	1760702	2531680	78.77%	6.732%
33	15.563	2115	2121	2136	rBV	307534	534243	16.62%	1.421%
34	15.674	2136	2140	2143	rVB5	7880	11553	0.36%	0.031%
35	15.845	2166	2169	2171	rVB3	3540	3395	0.11%	0.009%
36	16.316	2246	2249	2256	rVV9	3956	7435	0.23%	0.020%

Data Path : Z:\svoasrv\HPCHEM1\BNA_M\Data\BM082222\
 Data File : BM036373.D
 Acq On : 22 Aug 2022 19:18
 Operator : CG/JU
 Sample : N4251-06
 Misc :
 ALS Vial : 14 Sample Multiplier: 1

Instrument :
 BNA_M
 ClientSampleId :
 BGN70

Integration Parameters: LSCINT.P

Integrator: RTE
 Smoothing : OFF Filtering: 5
 Sampling : 1 Min Area: 0.1 % of largest Peak
 Start Thrs: 0.2 Max Peaks: 100
 Stop Thrs : 0 Peak Location: TOP

If leading or trailing edge < 100 prefer < Baseline drop else tangent >
 Peak separation: 5

Method : Z:\svoasrv\HPCHEM1\BNA_M\Methods\SFAM-EPA-BM081622.M
 Title : SVOA CALIBRATION

37	16.939	2352	2355	2358	rBV4	3780	5013	0.16%	0.013%
38	16.974	2358	2361	2363	rVV4	3926	4113	0.13%	0.011%
39	17.180	2389	2396	2406	rBV	1912678	2632166	81.90%	6.999%
40	17.280	2407	2413	2430	rVV	1962834	2773363	86.29%	7.375%
41	17.680	2478	2481	2483	rBV3	3385	4461	0.14%	0.012%
42	17.857	2507	2511	2517	rVB	30622	39534	1.23%	0.105%
43	18.080	2544	2549	2558	rBV2	70501	130513	4.06%	0.347%
44	19.033	2708	2711	2714	rVB4	10541	10813	0.34%	0.029%
45	19.139	2726	2729	2737	rBV6	18280	26833	0.83%	0.071%
46	19.215	2738	2742	2745	rBV2	19860	28824	0.90%	0.077%
47	19.362	2764	2767	2774	rBV6	23373	43312	1.35%	0.115%
48	19.574	2797	2803	2814	rBV	2306131	3094550	96.28%	8.229%
49	20.574	2970	2973	2977	rVB	63617	65238	2.03%	0.173%
50	21.080	3055	3059	3068	rBV2	167995	335880	10.45%	0.893%
51	21.362	3102	3107	3117	rBV	2152898	2772458	86.26%	7.372%
52	23.539	3470	3477	3492	rBV2	1568315	3213982	100.00%	8.547%
53	23.692	3496	3503	3512	rVV2	1429518	2838815	88.33%	7.549%

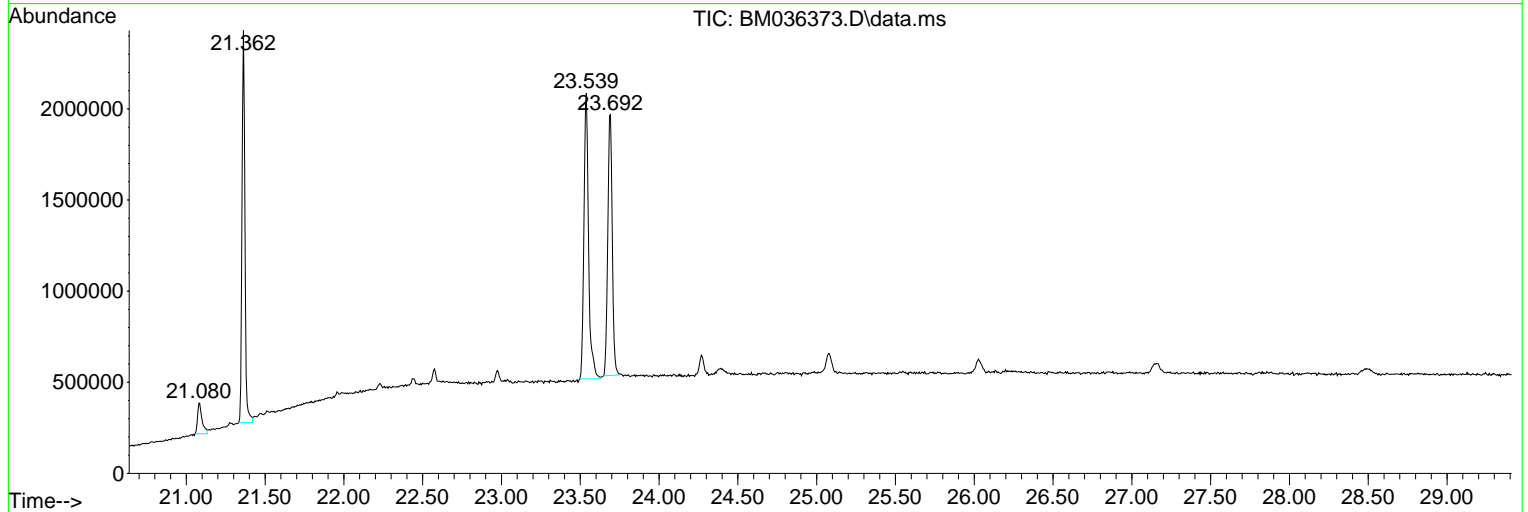
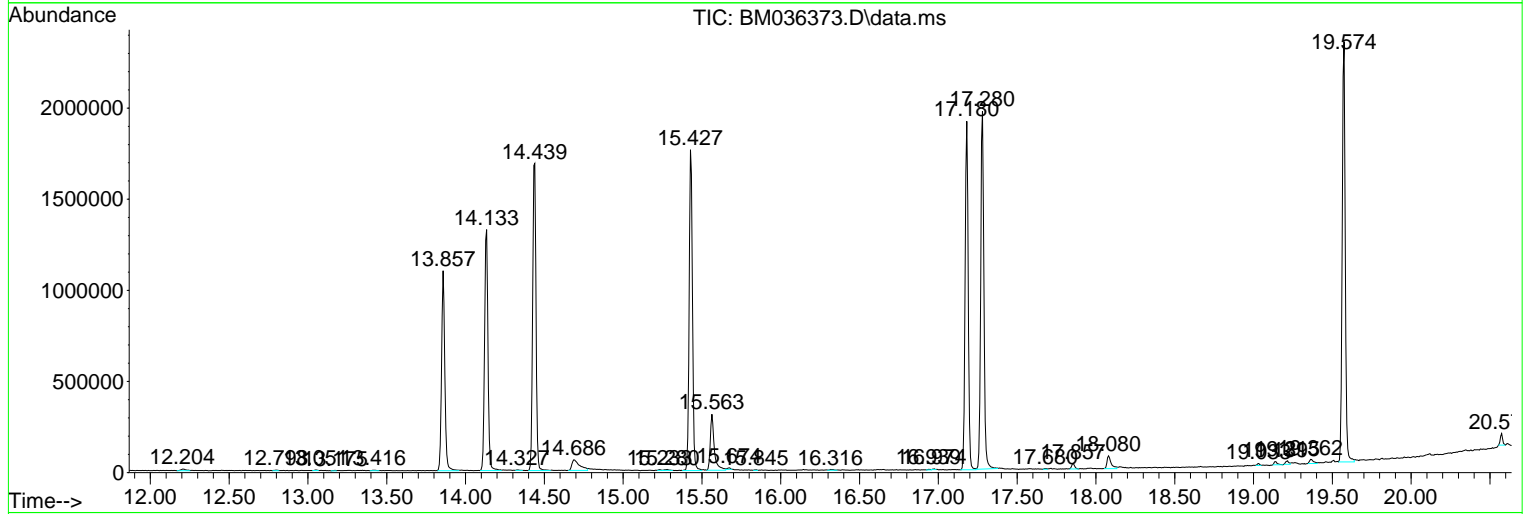
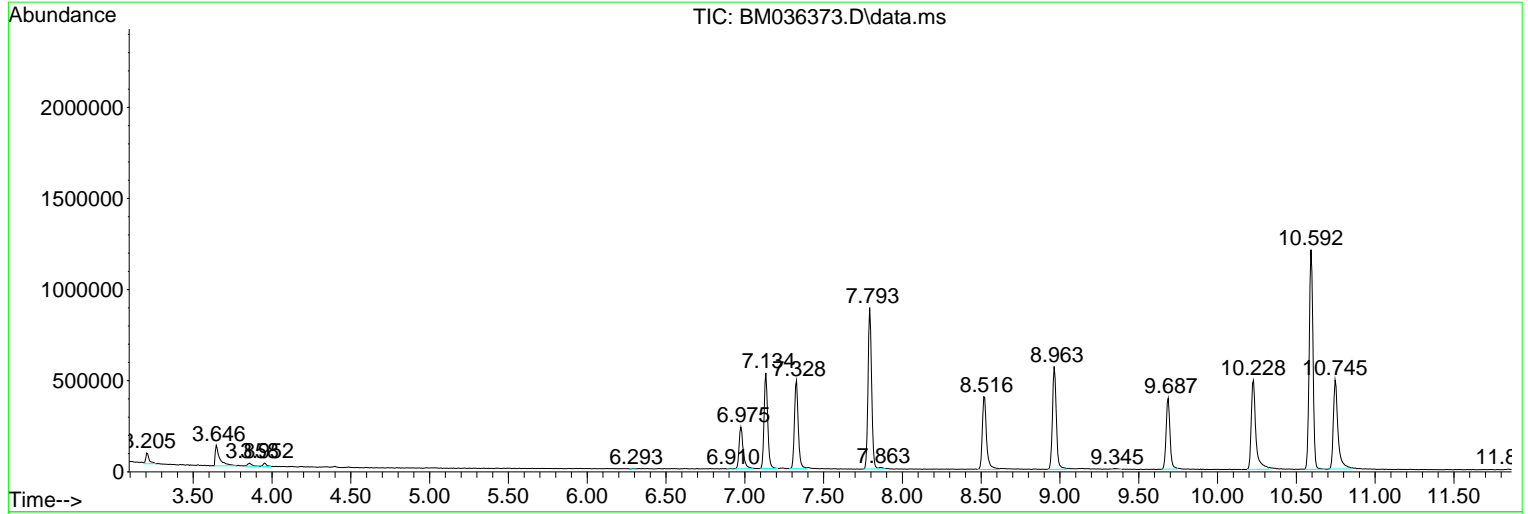
Sum of corrected areas: 37605468

Data Path : Z:\svoasrv\HPCHEM1\BNA_M\Data\BM082222\
 Data File : BM036373.D
 Acq On : 22 Aug 2022 19:18
 Operator : CG/JU
 Sample : N4251-06
 Misc :
 ALS Vial : 14 Sample Multiplier: 1

Instrument :
 BNA_M
ClientSampleId :
 BGN70

Quant Method : Z:\svoasrv\HPCHEM1\BNA_M\Methods\SFAM-EPA-BM081622.M
 Quant Title : SVOA CALIBRATION

TIC Library : C:\Database\NIST20.L
 TIC Integration Parameters: LSCINT.P



Data Path : Z:\svoasrv\HPCHEM1\BNA_M\Data\BM082222\
 Data File : BM036373.D
 Acq On : 22 Aug 2022 19:18
 Operator : CG/JU
 Sample : N4251-06
 Misc :
 ALS Vial : 14 Sample Multiplier: 1

Instrument :
 BNA_M
 ClientSampleId :
 BGN70

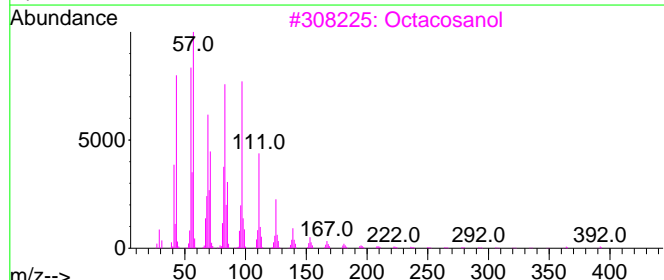
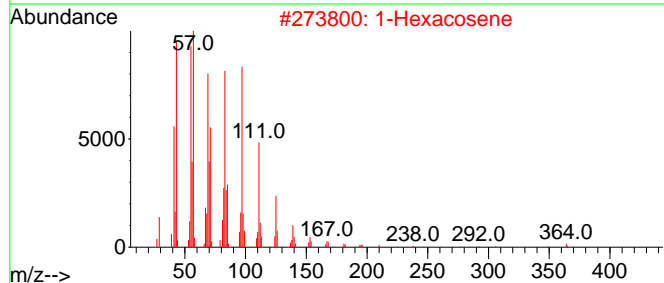
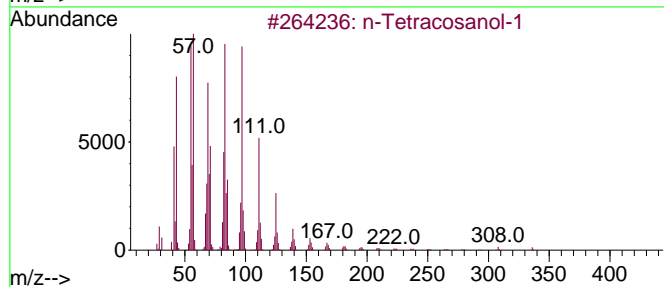
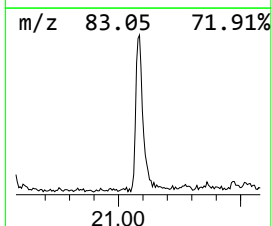
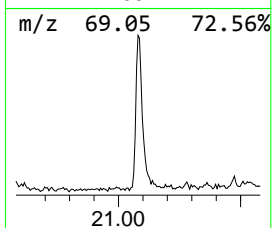
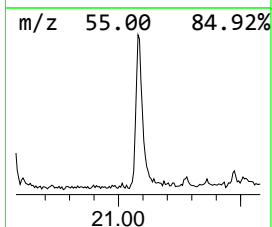
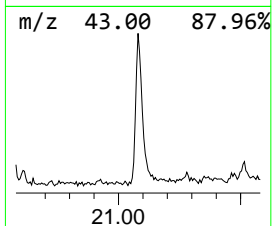
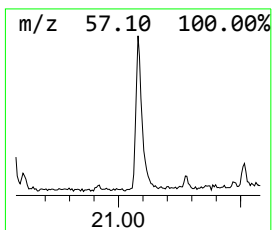
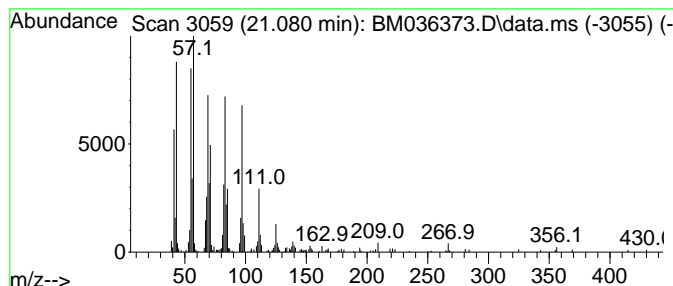
Quant Method : Z:\svoasrv\HPCHEM1\BNA_M\Methods\SFAM-EPA-BM081622.M
 Quant Title : SVOA CALIBRATION

TIC Library : C:\Database\NIST20.L
 TIC Integration Parameters: LSCINT.P

 Peak Number 1 n-Tetracosanol-1 Concentration Rank 1

R.T.	EstConc	Area	Relative to ISTD	R.T.
21.080	2.42 ng/ul	335880	Chrysene-d12	21.362

Hit#	of 5	Tentative ID	MW	MolForm	CAS#	Qual
1		n-Tetracosanol-1	354	C24H50O	000506-51-4	94
2		1-Hexacosene	364	C26H52	018835-33-1	94
3		Octacosanol	410	C28H58O	000557-61-9	94
4		Trichloroacetic acid, hexadecyl ...	386	C18H33Cl3O2	074339-54-1	93
5		17-Pentatriacontene	491	C35H70	006971-40-0	91



Data Path : Z:\svoasrv\HPCHEM1\BNA_M\Data\BM082222\
Data File : BM036373.D
Acq On : 22 Aug 2022 19:18
Operator : CG/JU
Sample : N4251-06
Misc :
ALS Vial : 14 Sample Multiplier: 1

Instrument :
BNA_M
ClientSampleId :
BGN70

Quant Method : Z:\svoasrv\HPCHEM1\BNA_M\Methods\SFAM-EPA-BM081622.M
Quant Title : SVOA CALIBRATION

TIC Library : C:\Database\NIST20.L
TIC Integration Parameters: LSCINT.P

TIC Top Hit name	RT	EstConc	Units	Response	--Internal Standard--			
					#	RT	Resp	Conc
n-Tetracosanol-1	21.080	2.4	ng/u1	335880	5	21.362	2772460	20.0