

Data Path : Z:\svoasrv\HPCHEM1\BNA_M\Data\BM082222\
 Data File : BM036381.D
 Acq On : 23 Aug 2022 08:34
 Operator : CG/JU
 Sample : PB147176BL
 Misc :
 ALS Vial : 23 Sample Multiplier: 1

Instrument :
 BNA_M
 ClientSampleId :
 SBLK176

Integration Parameters: LSCINT.P

Integrator: RTE
 Smoothing : OFF Filtering: 5
 Sampling : 1 Min Area: 0.1 % of largest Peak
 Start Thrs: 0.2 Max Peaks: 100
 Stop Thrs : 0 Peak Location: TOP

If leading or trailing edge < 100 prefer < Baseline drop else tangent >
 Peak separation: 5

Method : Z:\svoasrv\HPCHEM1\BNA_M\Methods\SFAM-EPA-BM081622.M
 Title : SVOA CALIBRATION

Signal : TIC: BM036381.D\data.ms

peak #	R.T. min	first scan	max scan	last scan	PK TY	peak height	corr. area	corr. % max.	% of total
1	3.199	15	19	27	rVB	92878	118039	1.85%	0.153%
2	3.622	88	91	116	rBV	1071194	1726316	27.11%	2.244%
3	3.940	142	145	153	rVB	22315	33303	0.52%	0.043%
4	6.957	651	658	670	rBV	1308165	2127396	33.41%	2.766%
5	7.122	679	686	697	rVB	1175353	1802585	28.31%	2.343%
6	7.310	711	718	732	rBV	1311526	2108037	33.11%	2.740%
7	7.781	791	798	806	rBV	1066101	1657877	26.04%	2.155%
8	8.504	912	921	939	rBV	1630035	2667292	41.89%	3.467%
9	8.951	989	997	1014	rBV	1368572	2171509	34.11%	2.823%
10	9.075	1015	1018	1028	rVB10	6991	16567	0.26%	0.022%
11	9.669	1112	1119	1132	rBV	1045110	1730025	27.17%	2.249%
12	10.210	1204	1211	1235	rBV	1553405	2691476	42.27%	3.499%
13	10.581	1266	1274	1292	rVB	1607909	2633544	41.36%	3.424%
14	10.734	1292	1300	1322	rBV	1594967	2911007	45.72%	3.784%
15	12.180	1541	1546	1552	rBV	26746	47027	0.74%	0.061%
16	13.404	1746	1754	1759	rBV8	10090	23059	0.36%	0.030%
17	13.851	1823	1830	1843	rBV	3051720	4117286	64.67%	5.352%
18	14.122	1869	1876	1887	rBV	3564370	5102721	80.15%	6.633%
19	14.427	1922	1928	1941	rVB	2523238	3562685	55.96%	4.631%
20	14.657	1961	1967	1989	rBV	819649	1713883	26.92%	2.228%
21	14.839	1996	1998	2006	rVB8	8062	14185	0.22%	0.018%
22	15.157	2048	2052	2055	rBV5	5822	11012	0.17%	0.014%
23	15.333	2073	2082	2083	rBV5	17942	44926	0.71%	0.058%
24	15.421	2091	2097	2113	rVB	4618996	6366841	100.00%	8.277%
25	15.557	2113	2120	2134	rBV	1008752	1493623	23.46%	1.942%
26	15.663	2134	2138	2145	rVB3	21640	37515	0.59%	0.049%
27	15.810	2158	2163	2169	rBV4	6985	13209	0.21%	0.017%
28	16.204	2226	2230	2236	rBV9	4762	6929	0.11%	0.009%
29	16.292	2238	2245	2256	rVB6	25233	61850	0.97%	0.080%
30	16.468	2268	2275	2281	rBV10	14129	36894	0.58%	0.048%
31	16.627	2296	2302	2309	rVB2	58557	98505	1.55%	0.128%
32	16.851	2337	2340	2347	rVB9	6130	10427	0.16%	0.014%
33	16.927	2347	2353	2355	rBV5	15988	34343	0.54%	0.045%
34	16.957	2356	2358	2363	rVB4	10981	16217	0.25%	0.021%
35	17.092	2378	2381	2388	rBV8	14157	20650	0.32%	0.027%
36	17.174	2388	2395	2401	rBV	2792514	3811399	59.86%	4.955%

Data Path : Z:\svoasrv\HPCHEM1\BNA_M\Data\BM082222\
 Data File : BM036381.D
 Acq On : 23 Aug 2022 08:34
 Operator : CG/JU
 Sample : PB147176BL
 Misc :
 ALS Vial : 23 Sample Multiplier: 1

Instrument :
 BNA_M
 ClientSampleId :
 SBLK176

Integration Parameters: LSCINT.P

Integrator: RTE
 Smoothing : OFF Filtering: 5
 Sampling : 1 Min Area: 0.1 % of largest Peak
 Start Thrs: 0.2 Max Peaks: 100
 Stop Thrs : 0 Peak Location: TOP

If leading or trailing edge < 100 prefer < Baseline drop else tangent >
 Peak separation: 5

Method : Z:\svoasrv\HPCHEM1\BNA_M\Methods\SFAM-EPA-BM081622.M
 Title : SVOA CALIBRATION

37	17.227	2401	2404	2405	rVV3	20836	26650	0.42%	0.035%
38	17.274	2406	2412	2429	rVB	4626529	6363903	99.95%	8.273%
39	17.457	2441	2443	2448	rVB6	6150	7845	0.12%	0.010%
40	17.568	2459	2462	2463	rBV3	5998	6484	0.10%	0.008%
41	17.662	2476	2478	2480	rBV3	8966	9167	0.14%	0.012%
42	17.704	2480	2485	2489	rVV	74318	94786	1.49%	0.123%
43	17.810	2500	2503	2506	rBV5	9908	15671	0.25%	0.020%
44	17.845	2506	2509	2514	rVB5	20593	26795	0.42%	0.035%
45	17.945	2523	2526	2530	rBV5	5953	10331	0.16%	0.013%
46	18.051	2541	2544	2546	rBV4	9285	9819	0.15%	0.013%
47	18.086	2546	2550	2556	rVV6	16251	30957	0.49%	0.040%
48	18.151	2556	2561	2567	rVV2	27918	43830	0.69%	0.057%
49	18.615	2637	2640	2643	rBV5	15348	21581	0.34%	0.028%
50	18.651	2643	2646	2651	rVB	56536	72740	1.14%	0.095%
51	19.133	2724	2728	2733	rBV3	53345	71877	1.13%	0.093%
52	19.204	2737	2740	2744	rBV	39690	53050	0.83%	0.069%
53	19.368	2765	2768	2770	rBV4	11084	15692	0.25%	0.020%
54	19.456	2779	2783	2786	rBV	51607	59472	0.93%	0.077%
55	19.568	2796	2802	2811	rBV	4604673	6183222	97.12%	8.038%
56	20.151	2899	2901	2905	rVB2	41724	48600	0.76%	0.063%
57	20.568	2968	2972	2984	rBV	1788222	2066218	32.45%	2.686%
58	21.362	3102	3107	3117	rBV	2408323	3147374	49.43%	4.091%
59	23.539	3470	3477	3491	rBV2	2462755	4792911	75.28%	6.231%
60	23.691	3496	3503	3513	rVB2	1355833	2705619	42.50%	3.517%

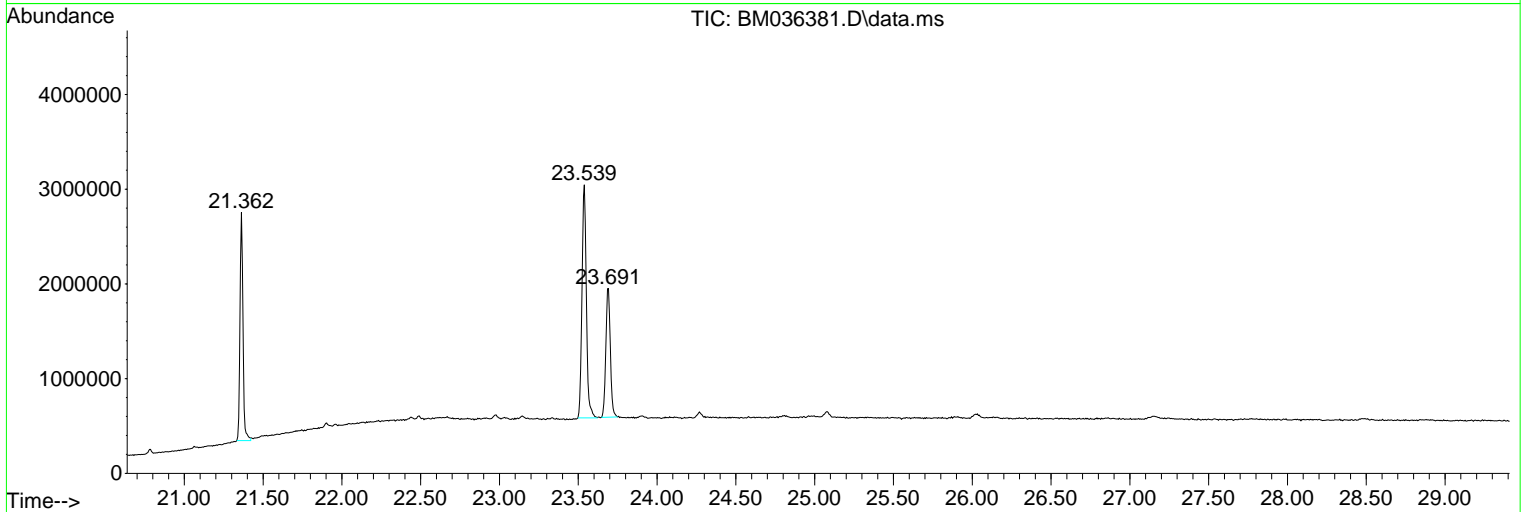
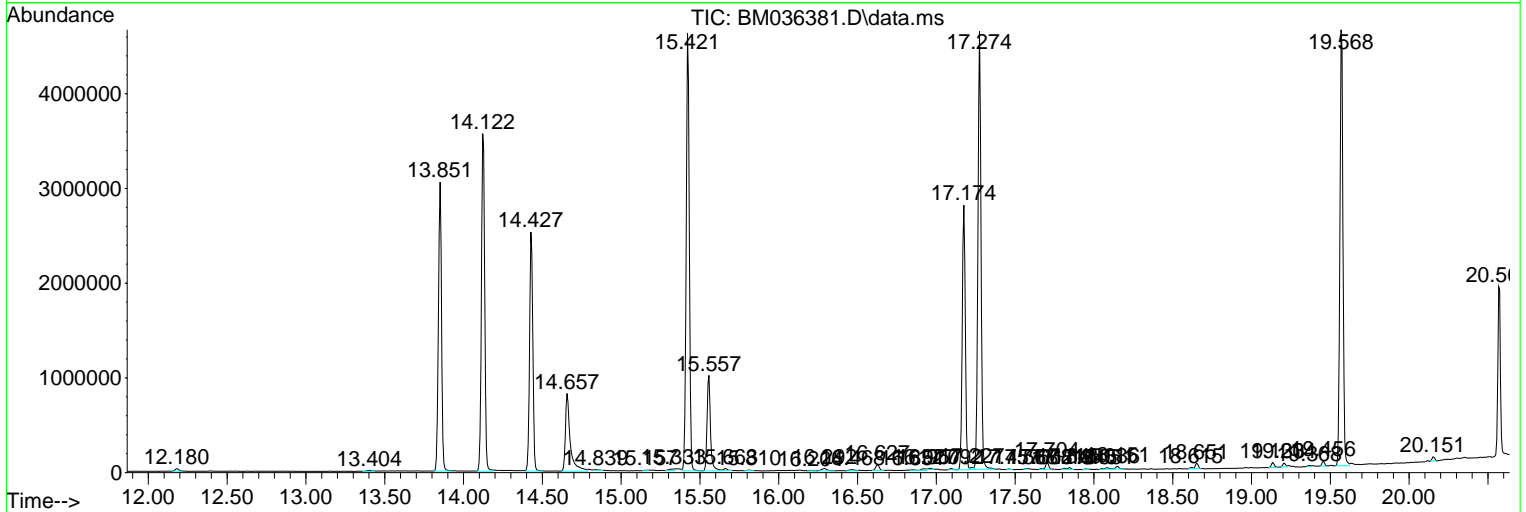
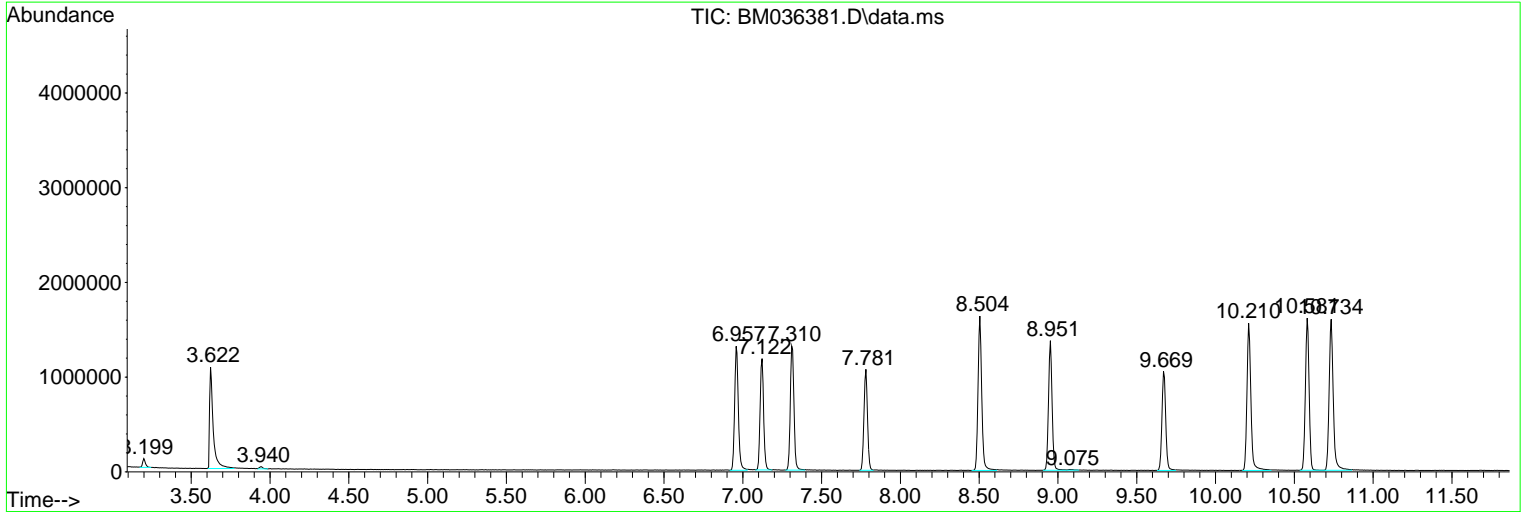
Sum of corrected areas: 76924753

Data Path : Z:\svoasrv\HPCHEM1\BNA_M\Data\BM082222\
 Data File : BM036381.D
 Acq On : 23 Aug 2022 08:34
 Operator : CG/JU
 Sample : PB147176BL
 Misc :
 ALS Vial : 23 Sample Multiplier: 1

Instrument :
 BNA_M
 ClientSampleId :
 SBLK176

Quant Method : Z:\svoasrv\HPCHEM1\BNA_M\Methods\SFAM-EPA-BM081622.M
 Quant Title : SVOA CALIBRATION

TIC Library : C:\Database\NIST20.L
 TIC Integration Parameters: LSCINT.P



Data Path : Z:\svoasrv\HPCHEM1\BNA_M\Data\BM082222\
 Data File : BM036381.D
 Acq On : 23 Aug 2022 08:34
 Operator : CG/JU
 Sample : PB147176BL
 Misc :
 ALS Vial : 23 Sample Multiplier: 1

Instrument :
 BNA_M
 ClientSampleId :
 SBLK176

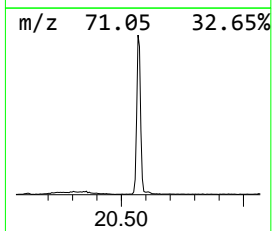
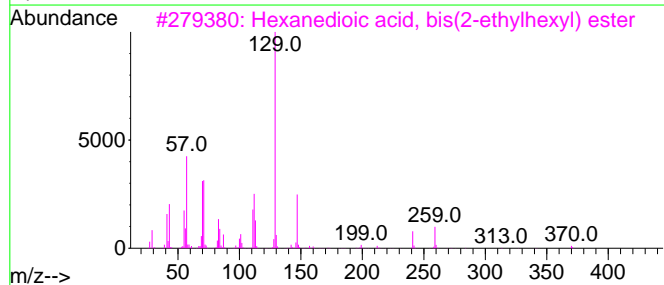
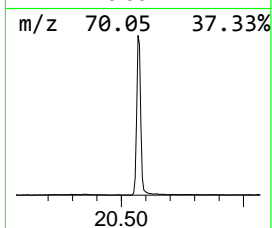
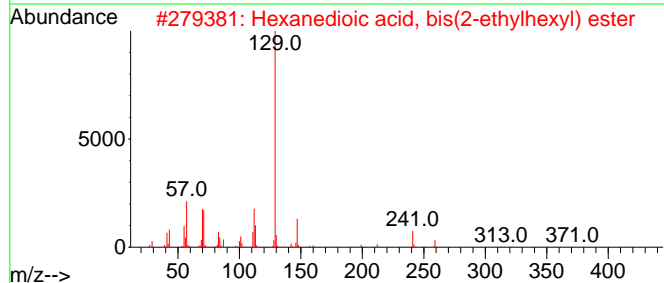
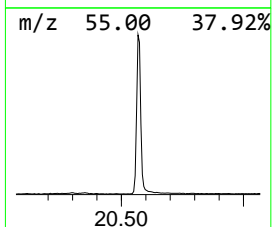
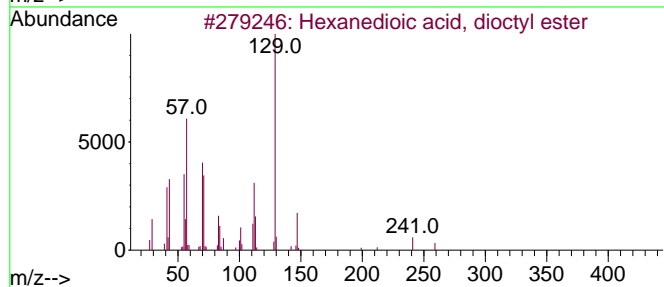
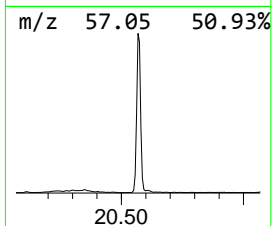
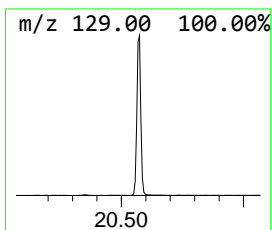
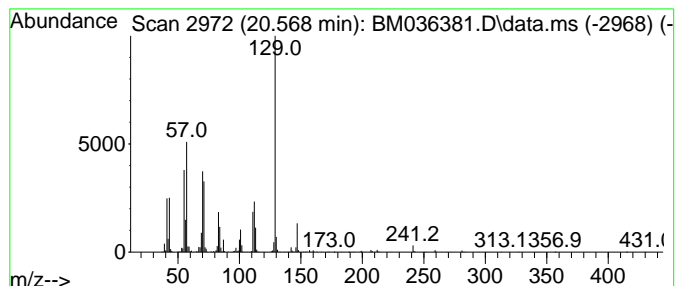
Quant Method : Z:\svoasrv\HPCHEM1\BNA_M\Methods\SFAM-EPA-BM081622.M
 Quant Title : SVOA CALIBRATION

TIC Library : C:\Database\NIST20.L
 TIC Integration Parameters: LSCINT.P

 Peak Number 1 Hexanedioic acid, dioctyl e... Concentration Rank 1

R.T.	EstConc	Area	Relative to ISTD	R.T.
20.568	13.13 ng/ul	2066220	Chrysene-d12	21.362

Hit#	of	5	Tentative ID	MW	MolForm	CAS#	Qual
1			Hexanedioic acid, dioctyl ester	370	C22H42O4	000123-79-5	91
2			Hexanedioic acid, bis(2-ethylhex...	370	C22H42O4	000103-23-1	91
3			Hexanedioic acid, bis(2-ethylhex...	370	C22H42O4	000103-23-1	90
4			Diisooctyl adipate	370	C22H42O4	001330-86-5	86
5			Hexanedioic acid, bis(2-ethylhex...	370	C22H42O4	000103-23-1	76



Data Path : Z:\svoasrv\HPCHEM1\BNA_M\Data\BM082222\
Data File : BM036381.D
Acq On : 23 Aug 2022 08:34
Operator : CG/JU
Sample : PB147176BL
Misc :
ALS Vial : 23 Sample Multiplier: 1

Instrument :
BNA_M
ClientSampleId :
SBLK176

Quant Method : Z:\svoasrv\HPCHEM1\BNA_M\Methods\SFAM-EPA-BM081622.M
Quant Title : SVOA CALIBRATION

TIC Library : C:\Database\NIST20.L
TIC Integration Parameters: LSCINT.P

TIC Top Hit name	RT	EstConc	Units	Response	--Internal Standard--			
					#	RT	Resp	Conc
Hexanedioic aci...	20.568	13.1	ng/u1	2066220	5	21.362	3147370	20.0