

Data Path : Z:\svoasrv\HPCHEM1\BNA_M\Data\BM082324\
 Data File : BM047335.D
 Acq On : 23 Aug 2024 16:08
 Operator : RC/JU
 Sample : P3686-02
 Misc :
 ALS Vial : 11 Sample Multiplier: 1

Instrument :
 BNA_M
ClientSampleId :
 DNB-47-COMPOSITE

Manual Integrations
APPROVED
 Reviewed By :Yogesh Patel 08/24/2024
 Supervised By :mohammad ahmed 08/24/2024

Quant Time: Aug 23 16:50:38 2024
 Quant Method : Z:\svoasrv\HPCHEM1\BNA_M\Methods\8270-BM081024.M
 Quant Title : ASP BNA STANDARDS FOR 5 POINT CALIBRATION
 QLast Update : Sun Aug 11 23:47:58 2024
 Response via : Initial Calibration

Compound	R.T.	QIon	Response	Conc	Units	Dev(Min)	
Internal Standards							
1) 1,4-Dichlorobenzene-d4	7.351	152	293707	20.000	ng	-0.02	
21) Naphthalene-d8	10.104	136	1075250	20.000	ng	-0.03	
39) Acenaphthene-d10	14.010	164	688959	20.000	ng	-0.02	
64) Phenanthrene-d10	16.774	188	1385929	20.000	ng	-0.02	
76) Chrysene-d12	21.015	240	988260	20.000	ng	-0.02	
86) Perylene-d12	23.703	264	1008594	20.000	ng	-0.02	
System Monitoring Compounds							
5) 2-Fluorophenol	5.010	112	929466	56.546	ng	-0.01	
7) Phenol-d6	6.569	99	1207414	53.310	ng	-0.02	
23) Nitrobenzene-d5	8.498	82	769999	36.059	ng	-0.02	
42) 2,4,6-Tribromophenol	15.521	330	498138	62.356	ng	-0.02	
45) 2-Fluorobiphenyl	12.616	172	1463188	32.760	ng	-0.03	
79) Terphenyl-d14	19.445	244	1933582	41.924	ng	-0.02	
Target Compounds							
31) Naphthalene	10.151	128	110786	2.068	ng		98
58) Fluorene	15.074	166	117254	2.510	ng		97
71) Phenanthrene	16.815	178	1148595	16.514	ng		100
72) Anthracene	16.909	178	272318	4.024	ng		99
75) Fluoranthene	18.850	202	1283744	15.174	ng		99
78) Pyrene	19.221	202	1083831	15.359	ng		99
81) Benzo(a)anthracene	20.997	228	445459	6.790	ng		99
83) Chrysene	21.056	228	391202	6.285	ng		97
87) Indeno(1,2,3-cd)pyrene	26.691	276	224803	3.448	ng	#	93
88) Benzo(b)fluoranthene	22.868	252	463866	7.744	ng		99
89) Benzo(k)fluoranthene	22.915	252	151546m	2.679	ng		
90) Benzo(a)pyrene	23.580	252	337274	6.500	ng		97
92) Benzo(g,h,i)perylene	27.615	276	225158	4.110	ng		99

(#) = qualifier out of range (m) = manual integration (+) = signals summed

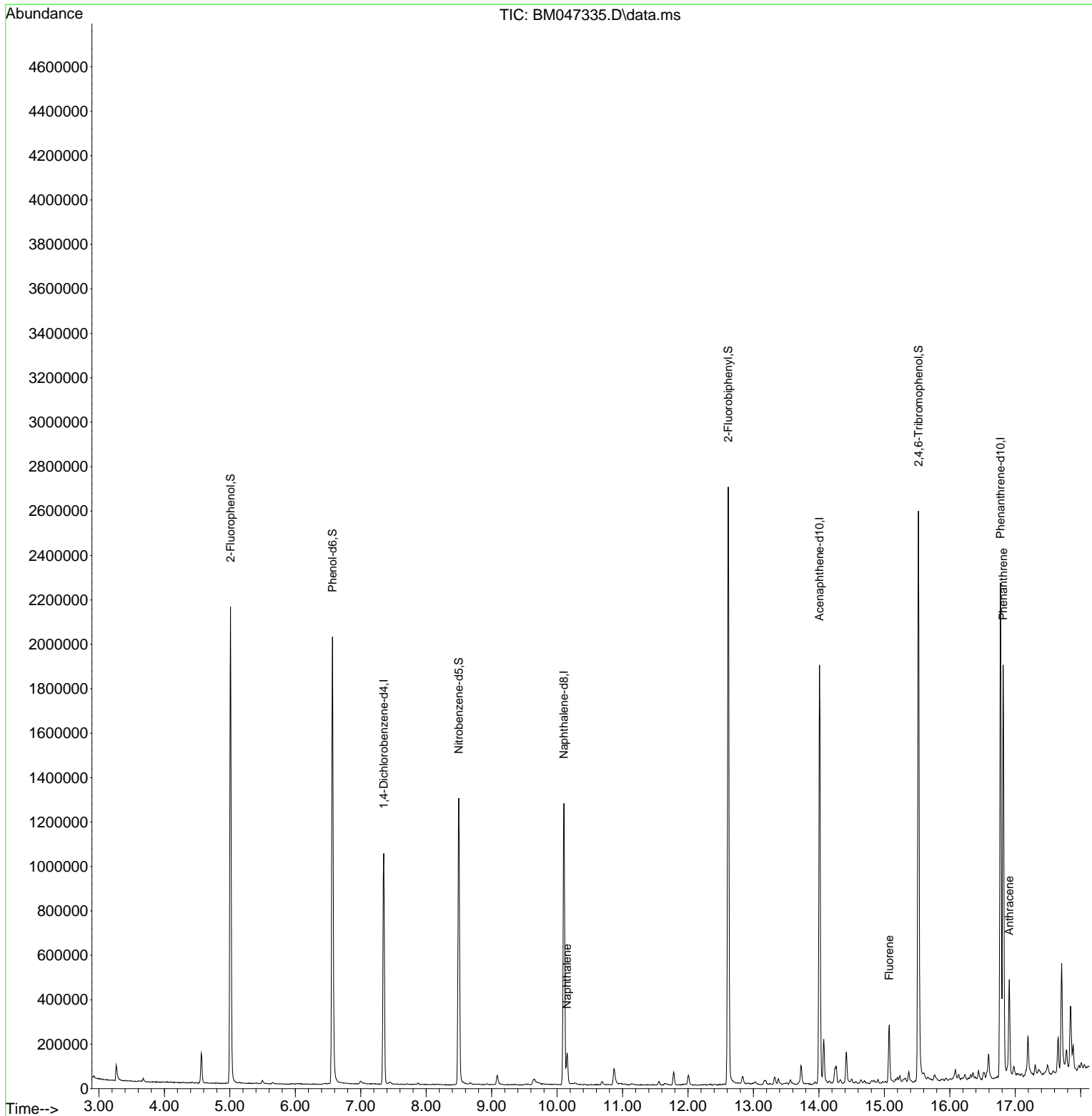
Data Path : Z:\svoasrv\HPCHEM1\BNA_M\Data\BM082324\
 Data File : BM047335.D
 Acq On : 23 Aug 2024 16:08
 Operator : RC/JU
 Sample : P3686-02
 Misc :
 ALS Vial : 11 Sample Multiplier: 1

Instrument :
 BNA_M
ClientSampleId :
 DNB-47-COMPOSITE

Manual Integrations
APPROVED

Reviewed By :Yogesh Patel 08/24/2024
 Supervised By :mohammad ahmed 08/24/2024

Quant Time: Aug 23 16:50:38 2024
 Quant Method : Z:\svoasrv\HPCHEM1\BNA_M\Methods\8270-BM081024.M
 Quant Title : ASP BNA STANDARDS FOR 5 POINT CALIBRATION
 QLast Update : Sun Aug 11 23:47:58 2024
 Response via : Initial Calibration



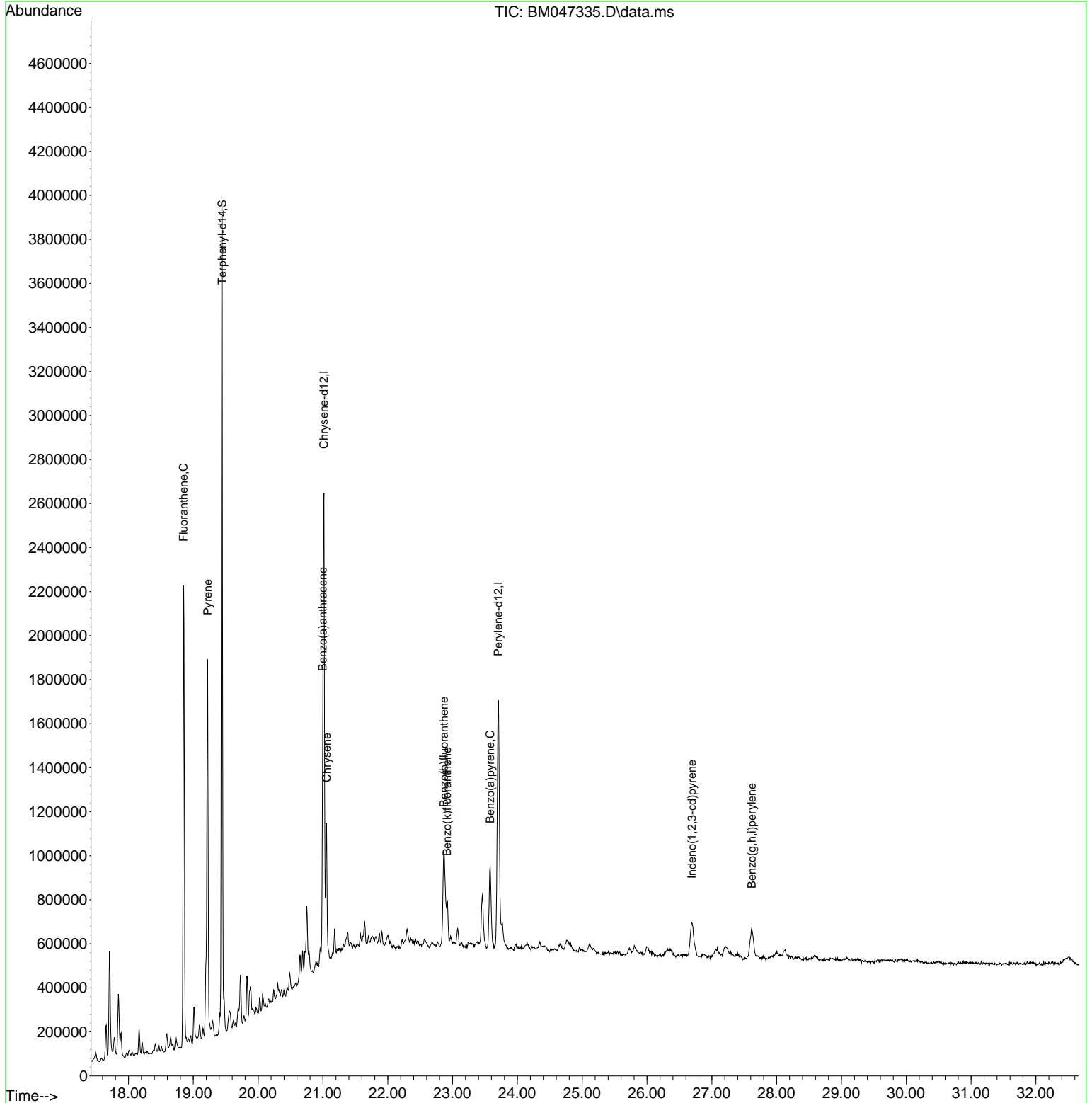
Data Path : Z:\svoasrv\HPCHEM1\BNA_M\Data\BM082324\
 Data File : BM047335.D
 Acq On : 23 Aug 2024 16:08
 Operator : RC/JU
 Sample : P3686-02
 Misc :
 ALS Vial : 11 Sample Multiplier: 1

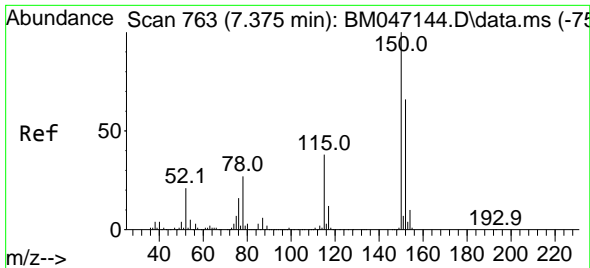
Instrument :
 BNA_M
ClientSampleId :
 DNB-47-COMPOSITE

Manual Integrations
APPROVED

Reviewed By :Yogesh Patel 08/24/2024
 Supervised By :mohammad ahmed 08/24/2024

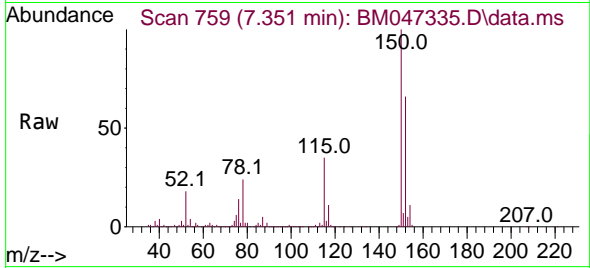
Quant Time: Aug 23 16:50:38 2024
 Quant Method : Z:\svoasrv\HPCHEM1\BNA_M\Methods\8270-BM081024.M
 Quant Title : ASP BNA STANDARDS FOR 5 POINT CALIBRATION
 QLast Update : Sun Aug 11 23:47:58 2024
 Response via : Initial Calibration





#1
 1,4-Dichlorobenzene-d4
 Concen: 20.000 ng
 RT: 7.351 min Scan# 71
 Delta R.T. -0.024 min
 Lab File: BM047335.D
 Acq: 23 Aug 2024 16:08

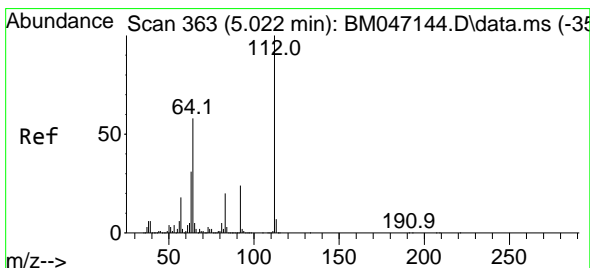
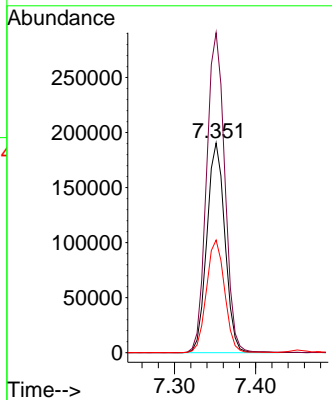
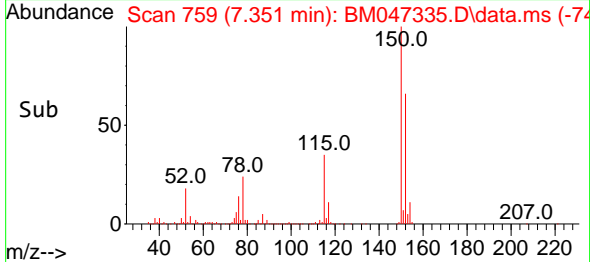
Instrument :
 BNA_M
 ClientSampleId :
 DNB-47-COMPOSITE



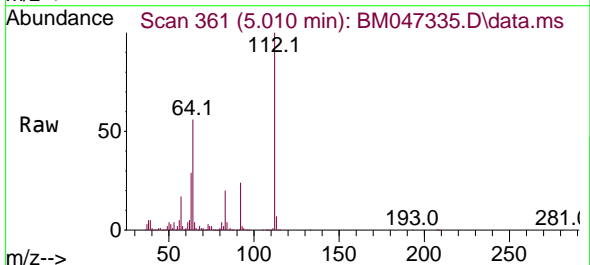
Tgt Ion:152 Resp: 29370
 Ion Ratio Lower Upper
 152 100
 150 152.6 120.5 180.7
 115 53.7 45.5 68.3

Manual Integrations
APPROVED

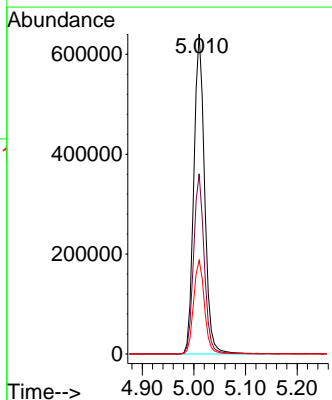
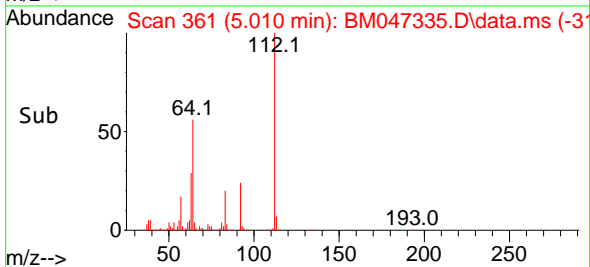
Reviewed By :Yogesh Patel 08/24/2024
 Supervised By :mohammad ahmed 08/24/2024

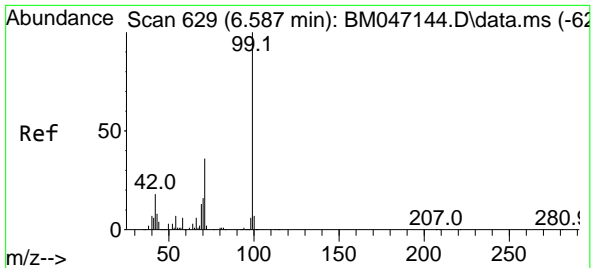


#5
 2-Fluorophenol
 Concen: 56.546 ng
 RT: 5.010 min Scan# 361
 Delta R.T. -0.012 min
 Lab File: BM047335.D
 Acq: 23 Aug 2024 16:08



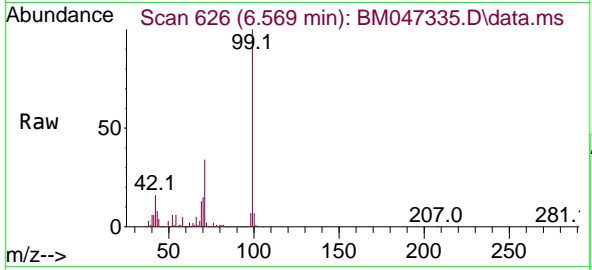
Tgt Ion:112 Resp: 929466
 Ion Ratio Lower Upper
 112 100
 64 56.3 46.7 70.1
 63 29.2 24.8 37.2





#7
 Phenol-d6
 Concen: 53.310 ng
 RT: 6.569 min Scan# 61
 Delta R.T. -0.018 min
 Lab File: BM047335.D
 Acq: 23 Aug 2024 16:08

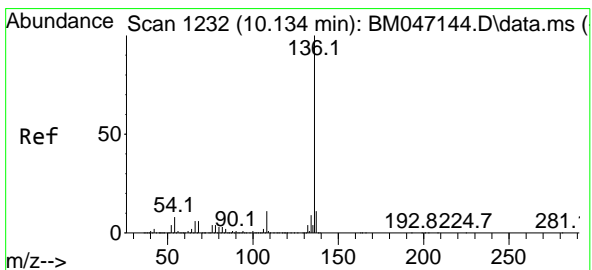
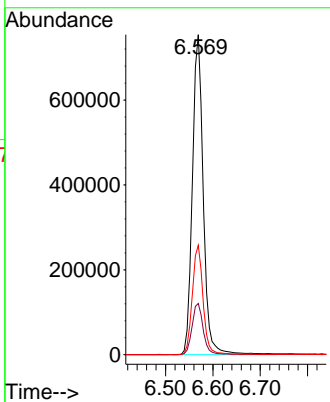
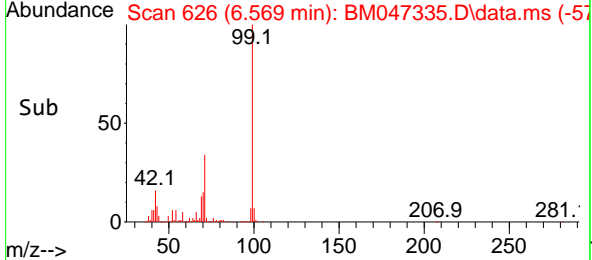
Instrument :
 BNA_M
 ClientSampleId :
 DNB-47-COMPOSITE



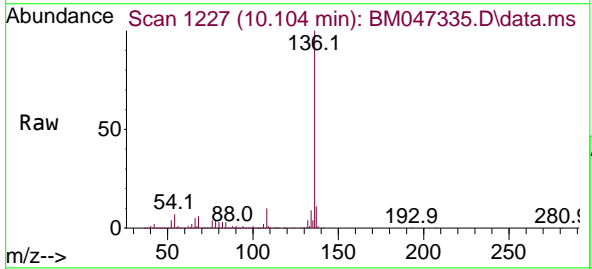
Tgt Ion: 99 Resp: 1207414
 Ion Ratio Lower Upper
 99 100
 42 16.0 14.1 21.1
 71 34.2 28.5 42.7

Manual Integrations
 APPROVED

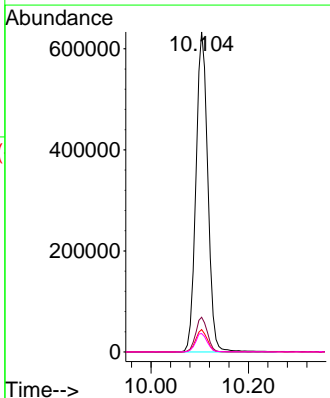
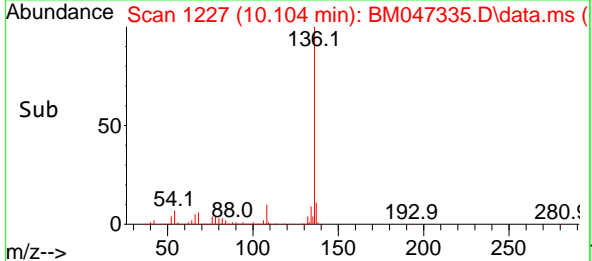
Reviewed By :Yogesh Patel 08/24/2024
 Supervised By :mohammad ahmed 08/24/2024

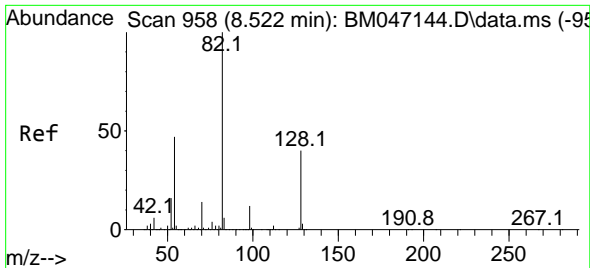


#21
 Naphthalene-d8
 Concen: 20.000 ng
 RT: 10.104 min Scan# 1227
 Delta R.T. -0.030 min
 Lab File: BM047335.D
 Acq: 23 Aug 2024 16:08



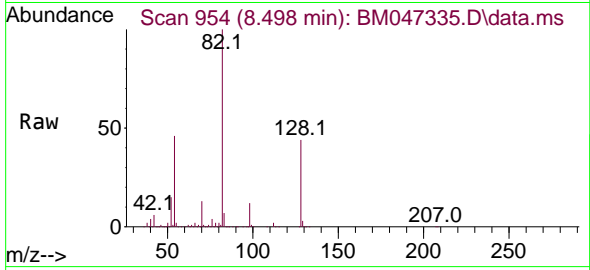
Tgt Ion:136 Resp: 1075250
 Ion Ratio Lower Upper
 136 100
 137 10.9 8.8 13.2
 54 7.0 6.0 9.0
 68 5.8 4.8 7.2





#23
 Nitrobenzene-d5
 Concen: 36.059 ng
 RT: 8.498 min Scan# 91
 Delta R.T. -0.024 min
 Lab File: BM047335.D
 Acq: 23 Aug 2024 16:08

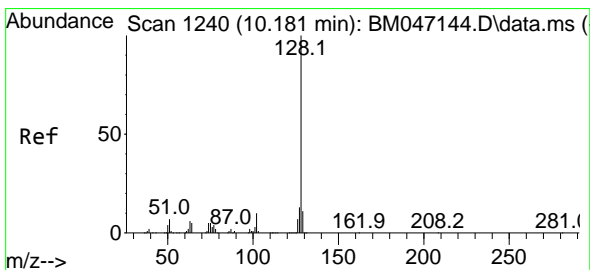
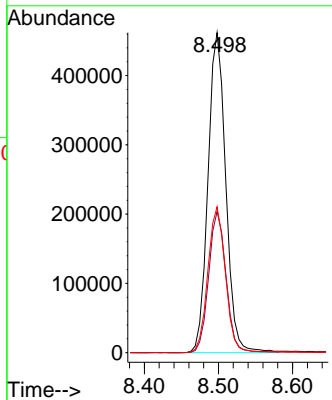
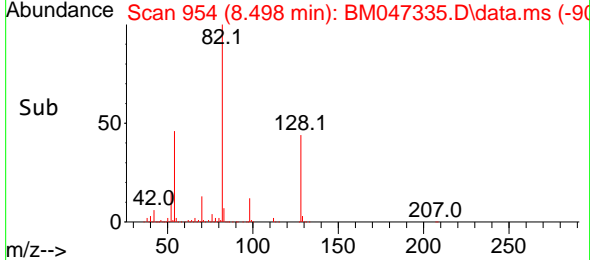
Instrument :
 BNA_M
 ClientSampleId :
 DNB-47-COMPOSITE



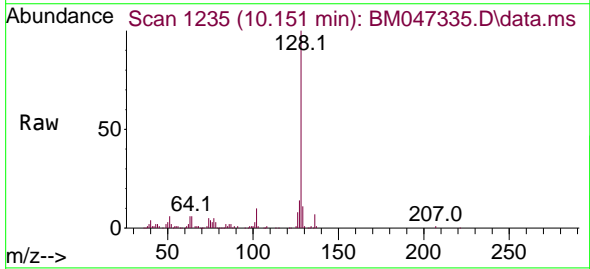
Tgt Ion: 82 Resp: 769999
 Ion Ratio Lower Upper
 82 100
 128 44.1 32.3 48.5
 54 45.6 37.4 56.2

Manual Integrations
 APPROVED

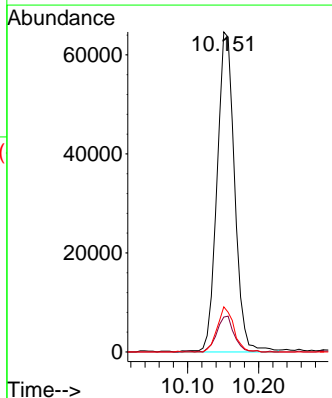
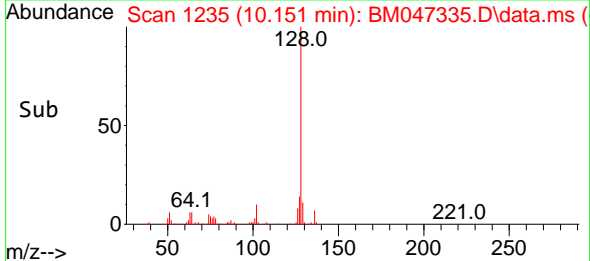
Reviewed By :Yogesh Patel 08/24/2024
 Supervised By :mohammad ahmed 08/24/2024

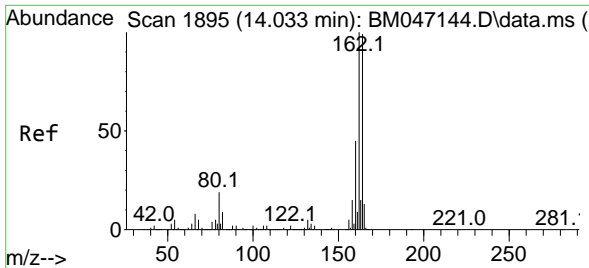


#31
 Naphthalene
 Concen: 2.068 ng
 RT: 10.151 min Scan# 1235
 Delta R.T. -0.030 min
 Lab File: BM047335.D
 Acq: 23 Aug 2024 16:08



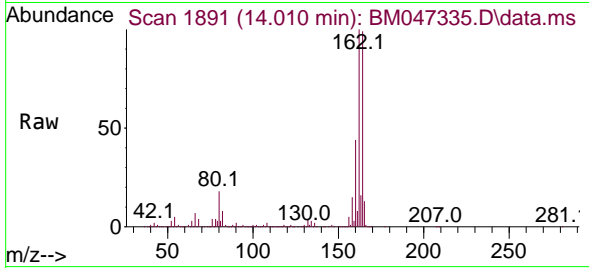
Tgt Ion:128 Resp: 110786
 Ion Ratio Lower Upper
 128 100
 129 10.9 8.6 13.0
 127 14.1 10.2 15.4





#39
 Acenaphthene-d10
 Concen: 20.000 ng
 RT: 14.010 min Scan# 11
 Delta R.T. -0.024 min
 Lab File: BM047335.D
 Acq: 23 Aug 2024 16:08

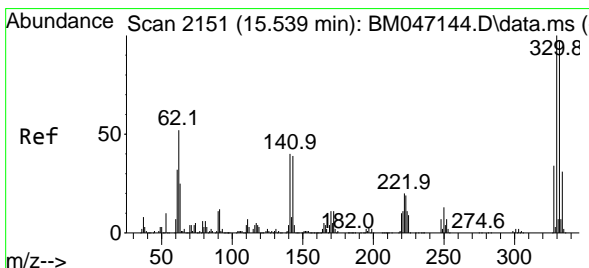
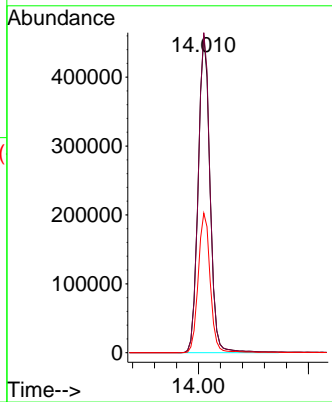
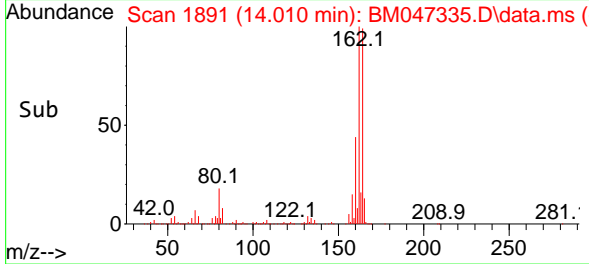
Instrument :
 BNA_M
 ClientSampleId :
 DNB-47-COMPOSITE



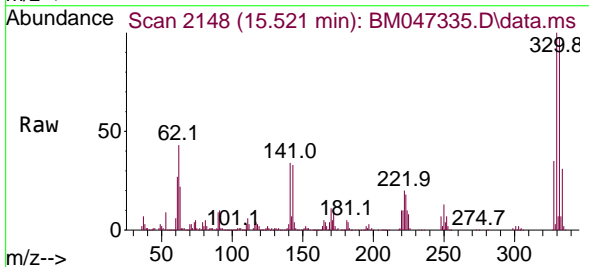
Tgt Ion:164 Resp: 68895
 Ion Ratio Lower Upper
 164 100
 162 100.9 80.7 121.1
 160 44.0 36.0 54.0

Manual Integrations
 APPROVED

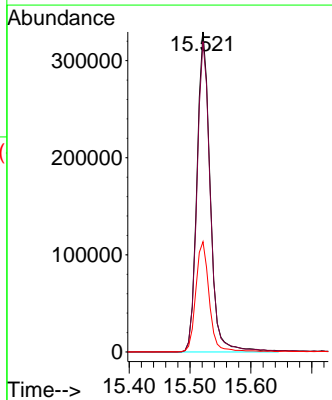
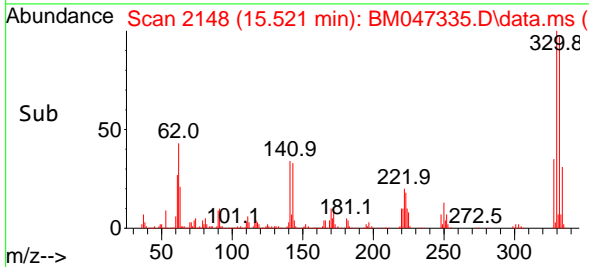
Reviewed By :Yogesh Patel 08/24/2024
 Supervised By :mohammad ahmed 08/24/2024

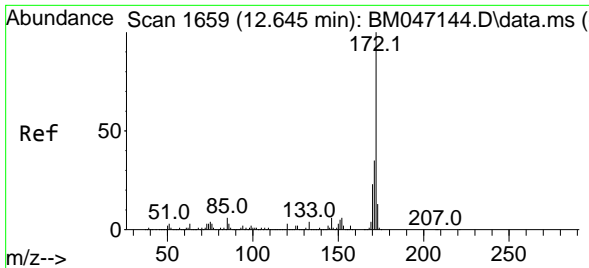


#42
 2,4,6-Tribromophenol
 Concen: 62.356 ng
 RT: 15.521 min Scan# 2148
 Delta R.T. -0.018 min
 Lab File: BM047335.D
 Acq: 23 Aug 2024 16:08



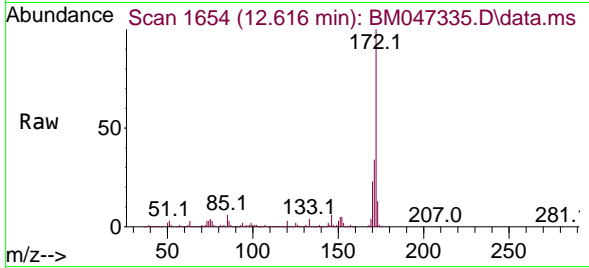
Tgt Ion:330 Resp: 498138
 Ion Ratio Lower Upper
 330 100
 332 98.0 77.4 116.2
 141 34.8 31.6 47.4





#45
 2-Fluorobiphenyl
 Concen: 32.760 ng
 RT: 12.616 min Scan# 10
 Delta R.T. -0.029 min
 Lab File: BM047335.D
 Acq: 23 Aug 2024 16:08

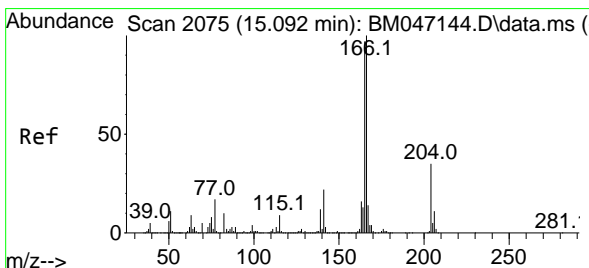
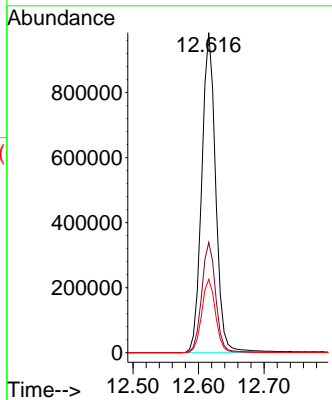
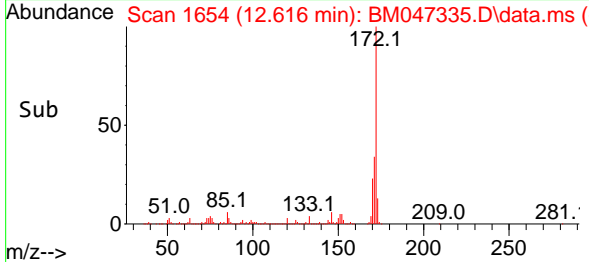
Instrument :
 BNA_M
 ClientSampleId :
 DNB-47-COMPOSITE



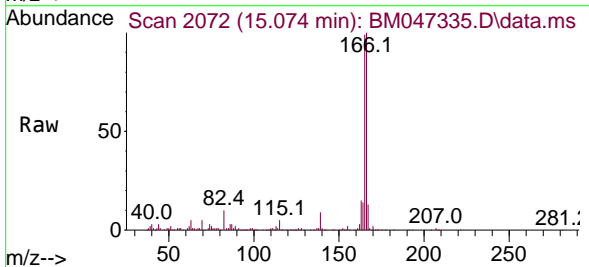
Tgt Ion:172 Resp: 1463188
 Ion Ratio Lower Upper
 172 100
 171 34.4 27.8 41.6
 170 22.9 18.7 28.1

Manual Integrations
 APPROVED

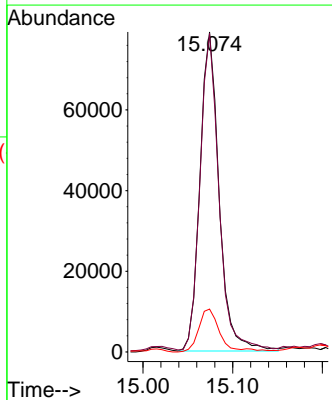
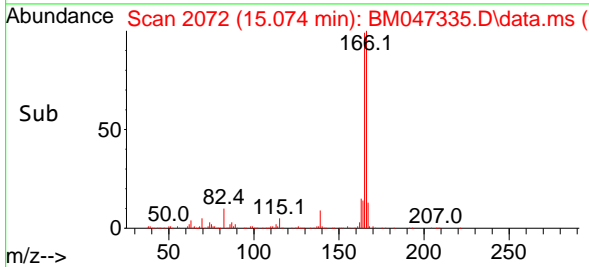
Reviewed By :Yogesh Patel 08/24/2024
 Supervised By :mohammad ahmed 08/24/2024

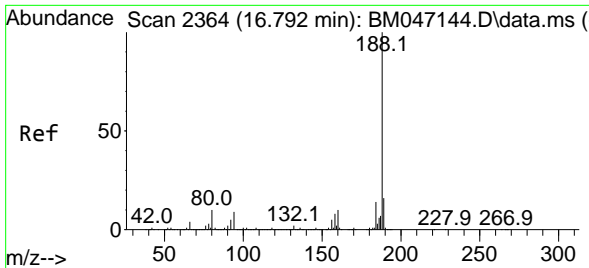


#58
 Fluorene
 Concen: 2.510 ng
 RT: 15.074 min Scan# 2072
 Delta R.T. -0.018 min
 Lab File: BM047335.D
 Acq: 23 Aug 2024 16:08



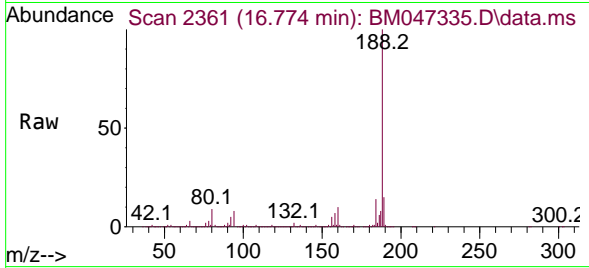
Tgt Ion:166 Resp: 117254
 Ion Ratio Lower Upper
 166 100
 165 99.5 77.4 116.0
 167 13.4 11.0 16.6





#64
 Phenanthrene-d10
 Concen: 20.000 ng
 RT: 16.774 min Scan# 21
 Delta R.T. -0.018 min
 Lab File: BM047335.D
 Acq: 23 Aug 2024 16:08

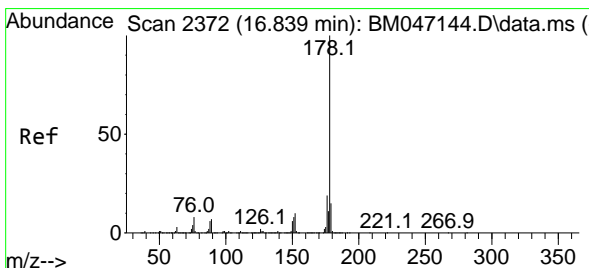
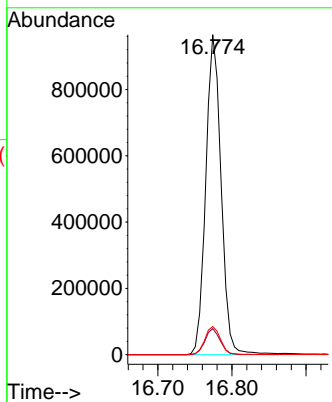
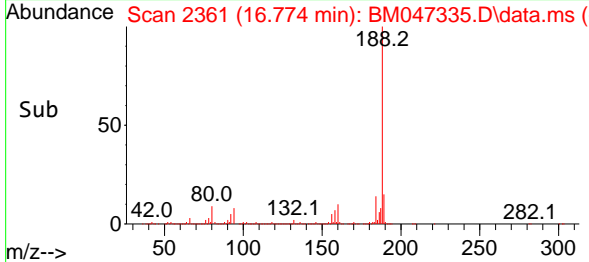
Instrument :
 BNA_M
 ClientSampleId :
 DNB-47-COMPOSITE



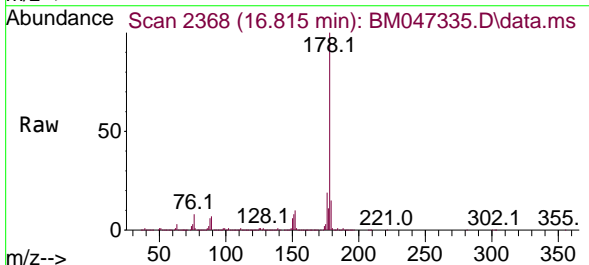
Tgt Ion:188 Resp: 1385929
 Ion Ratio Lower Upper
 188 100
 94 8.1 7.0 10.6
 80 8.8 8.0 12.0

Manual Integrations
 APPROVED

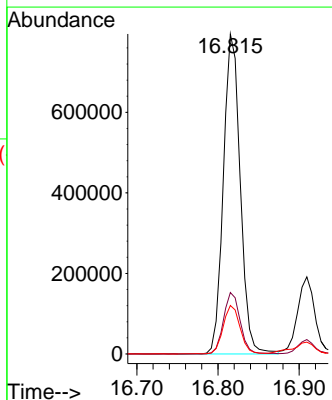
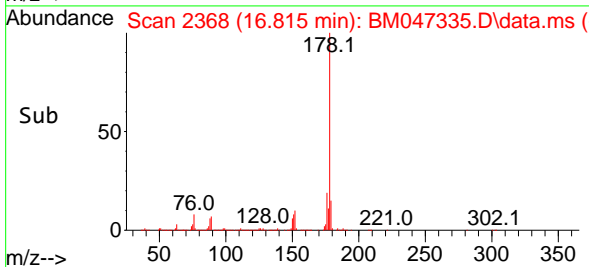
Reviewed By :Yogesh Patel 08/24/2024
 Supervised By :mohammad ahmed 08/24/2024

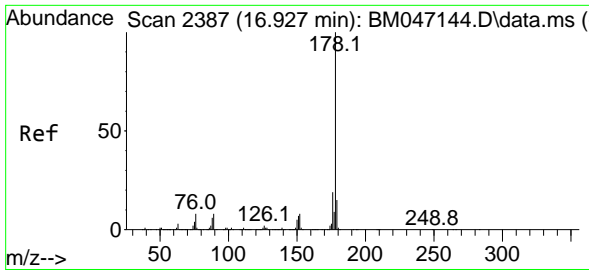


#71
 Phenanthrene
 Concen: 16.514 ng
 RT: 16.815 min Scan# 2368
 Delta R.T. -0.024 min
 Lab File: BM047335.D
 Acq: 23 Aug 2024 16:08



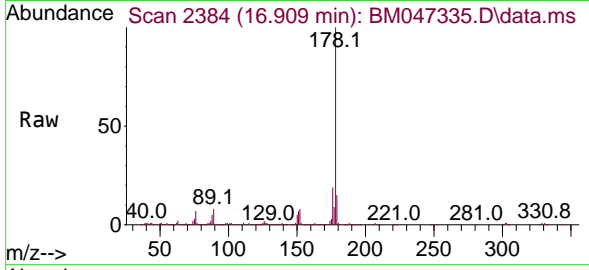
Tgt Ion:178 Resp: 1148595
 Ion Ratio Lower Upper
 178 100
 176 19.2 15.3 22.9
 179 15.2 12.4 18.6





#72
 Anthracene
 Concen: 4.024 ng
 RT: 16.909 min Scan# 21
 Delta R.T. -0.018 min
 Lab File: BM047335.D
 Acq: 23 Aug 2024 16:08

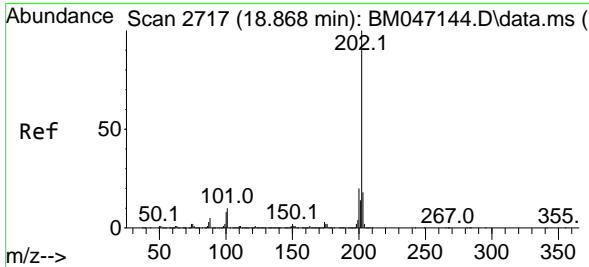
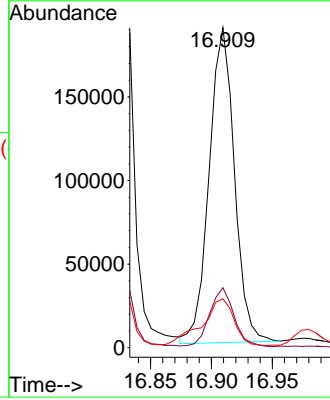
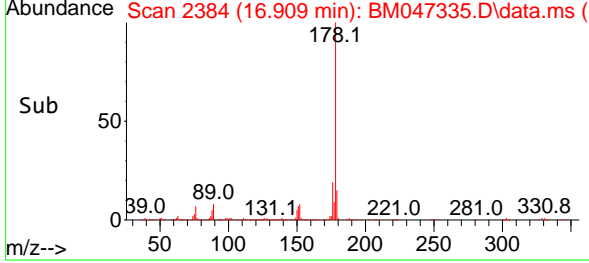
Instrument :
 BNA_M
 ClientSampleId :
 DNB-47-COMPOSITE



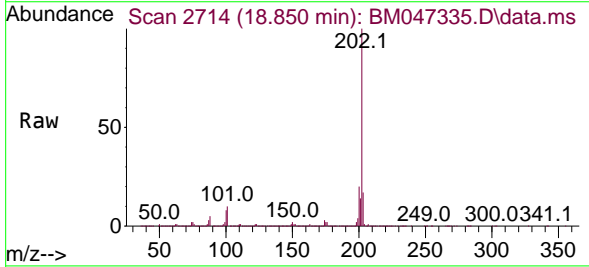
Tgt Ion:178 Resp: 272318
 Ion Ratio Lower Upper
 178 100
 176 18.8 14.8 22.2
 179 15.3 12.4 18.6

Manual Integrations
 APPROVED

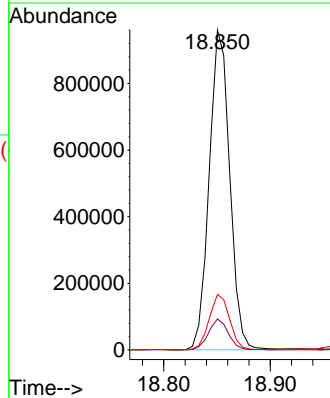
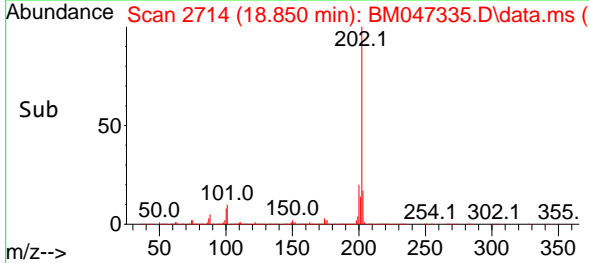
Reviewed By :Yogesh Patel 08/24/2024
 Supervised By :mohammad ahmed 08/24/2024

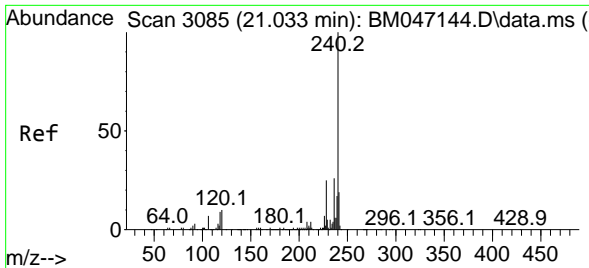


#75
 Fluoranthene
 Concen: 15.174 ng
 RT: 18.850 min Scan# 2714
 Delta R.T. -0.018 min
 Lab File: BM047335.D
 Acq: 23 Aug 2024 16:08



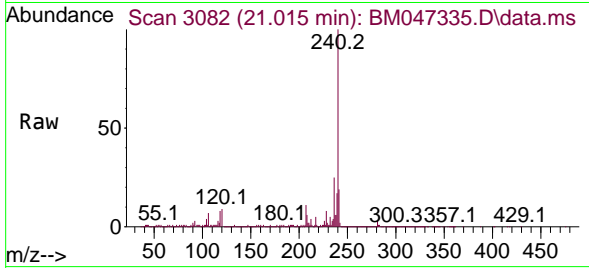
Tgt Ion:202 Resp: 1283744
 Ion Ratio Lower Upper
 202 100
 101 9.7 0.0 30.2
 203 17.4 0.0 37.6





#76
 Chrysene-d12
 Concen: 20.000 ng
 RT: 21.015 min Scan# 3085
 Delta R.T. -0.018 min
 Lab File: BM047335.D
 Acq: 23 Aug 2024 16:08

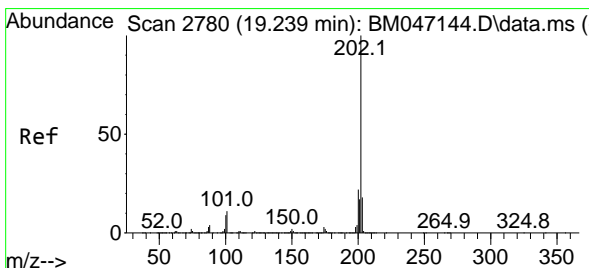
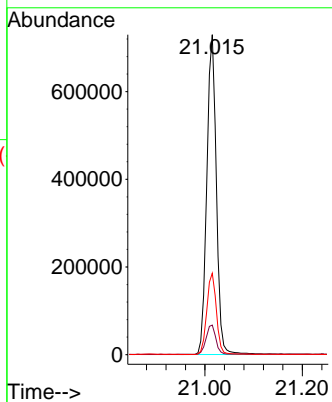
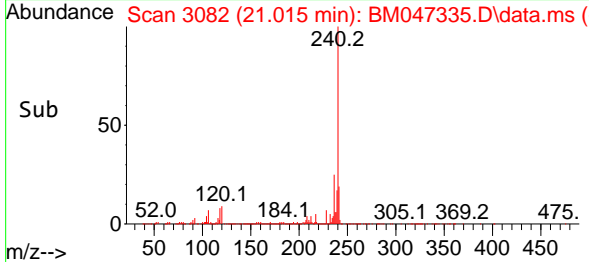
Instrument : BNA_M
 ClientSampleId : DNB-47-COMPOSITE



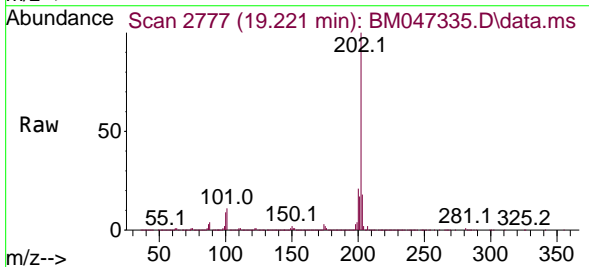
Tgt Ion:240 Resp: 988260
 Ion Ratio Lower Upper
 240 100
 120 9.2 8.2 12.2
 236 25.4 20.6 30.8

Manual Integrations
 APPROVED

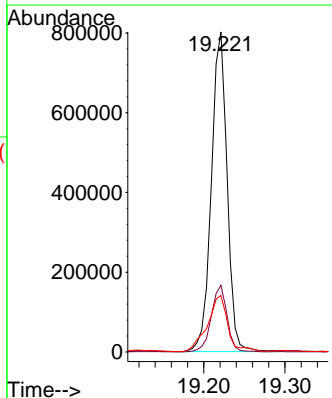
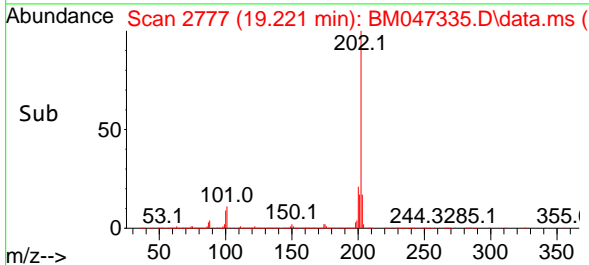
Reviewed By :Yogesh Patel 08/24/2024
 Supervised By :mohammad ahmed 08/24/2024

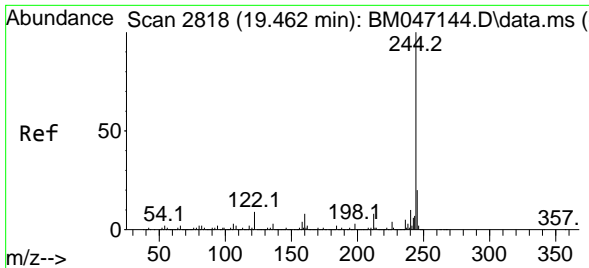


#78
 Pyrene
 Concen: 15.359 ng
 RT: 19.221 min Scan# 2777
 Delta R.T. -0.018 min
 Lab File: BM047335.D
 Acq: 23 Aug 2024 16:08



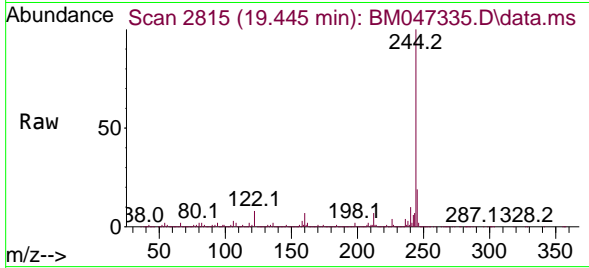
Tgt Ion:202 Resp: 1083831
 Ion Ratio Lower Upper
 202 100
 200 20.9 17.2 25.8
 203 17.6 14.2 21.2





#79
 Terphenyl-d14
 Concen: 41.924 ng
 RT: 19.445 min Scan# 21
 Delta R.T. -0.018 min
 Lab File: BM047335.D
 Acq: 23 Aug 2024 16:08

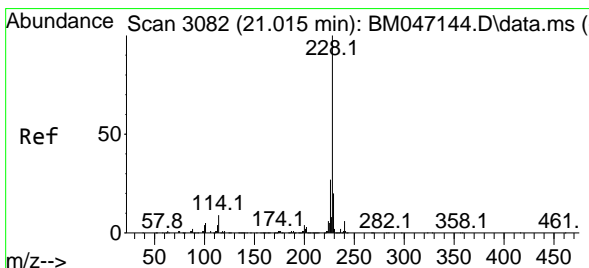
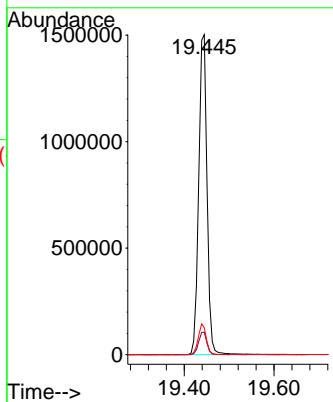
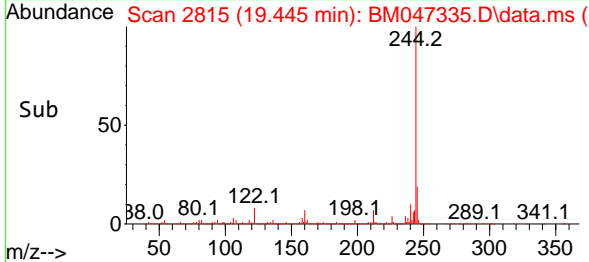
Instrument :
 BNA_M
 ClientSampleId :
 DNB-47-COMPOSITE



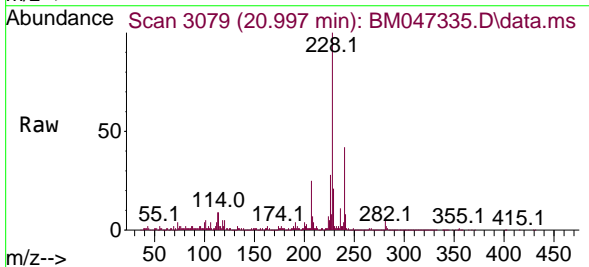
Tgt Ion:244 Resp: 193358
 Ion Ratio Lower Upper
 244 100
 212 7.0 6.2 9.4
 122 8.4 7.1 10.7

Manual Integrations
 APPROVED

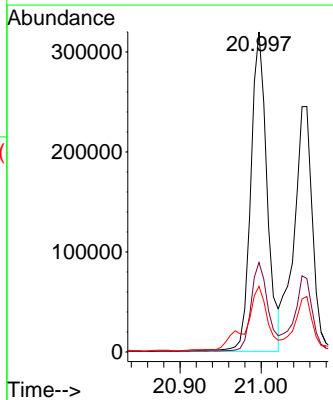
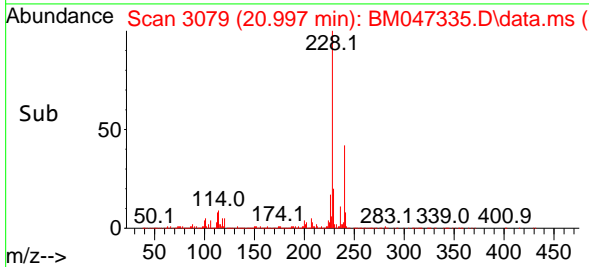
Reviewed By :Yogesh Patel 08/24/2024
 Supervised By :mohammad ahmed 08/24/2024

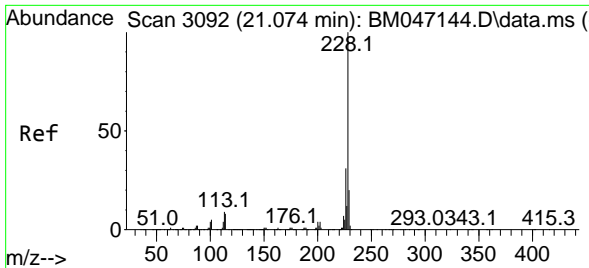


#81
 Benzo(a)anthracene
 Concen: 6.790 ng
 RT: 20.997 min Scan# 3079
 Delta R.T. -0.018 min
 Lab File: BM047335.D
 Acq: 23 Aug 2024 16:08



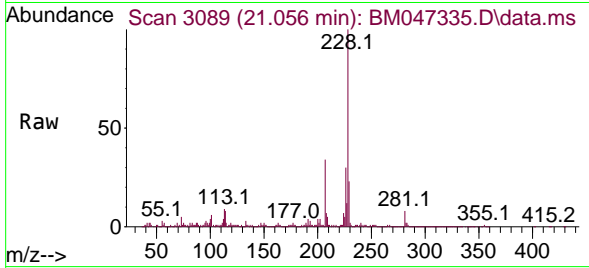
Tgt Ion:228 Resp: 445459
 Ion Ratio Lower Upper
 228 100
 226 27.9 21.8 32.6
 229 20.5 15.8 23.8





#83
 Chrysene
 Concen: 6.285 ng
 RT: 21.056 min Scan# 3092
 Delta R.T. -0.018 min
 Lab File: BM047335.D
 Acq: 23 Aug 2024 16:08

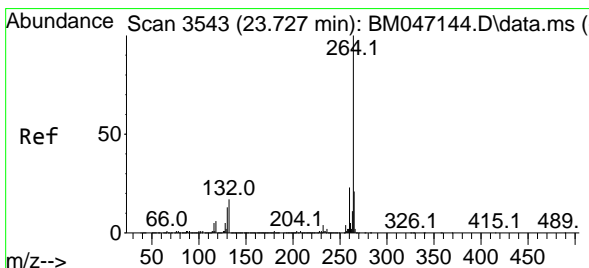
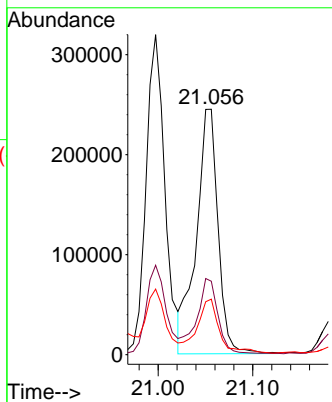
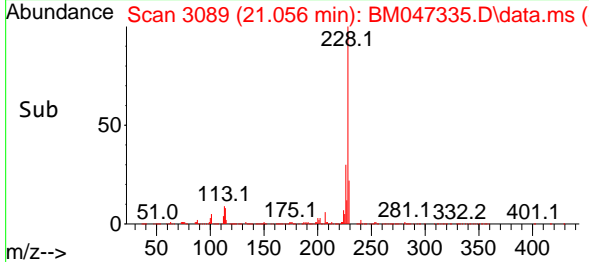
Instrument :
 BNA_M
 ClientSampleId :
 DNB-47-COMPOSITE



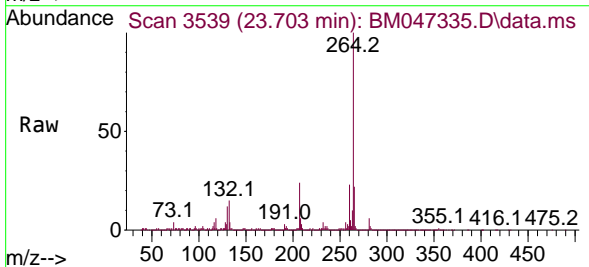
Tgt Ion:228 Resp: 391200
 Ion Ratio Lower Upper
 228 100
 226 29.9 24.4 36.6
 229 22.6 15.7 23.5

Manual Integrations
 APPROVED

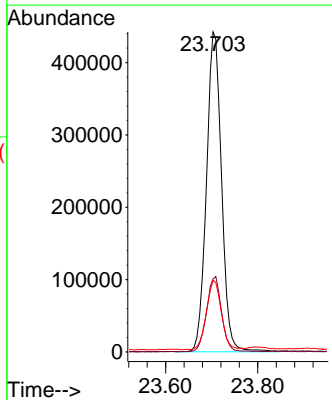
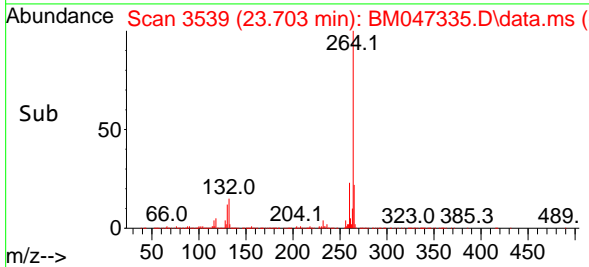
Reviewed By :Yogesh Patel 08/24/2024
 Supervised By :mohammad ahmed 08/24/2024

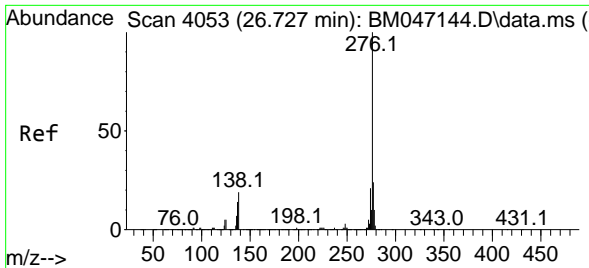


#86
 Perylene-d12
 Concen: 20.000 ng
 RT: 23.703 min Scan# 3539
 Delta R.T. -0.024 min
 Lab File: BM047335.D
 Acq: 23 Aug 2024 16:08



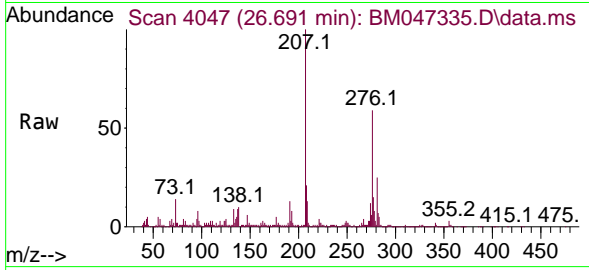
Tgt Ion:264 Resp: 1008594
 Ion Ratio Lower Upper
 264 100
 260 22.8 18.5 27.7
 265 22.3 17.3 25.9





#87
 Indeno(1,2,3-cd)pyrene
 Concen: 3.448 ng
 RT: 26.691 min Scan# 4053
 Delta R.T. -0.036 min
 Lab File: BM047335.D
 Acq: 23 Aug 2024 16:08

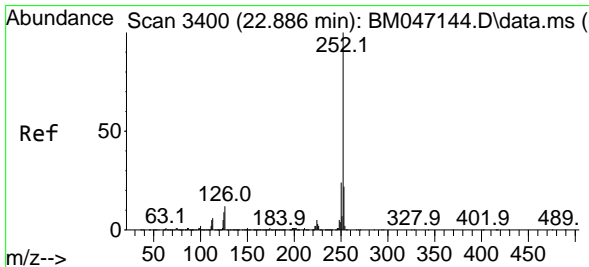
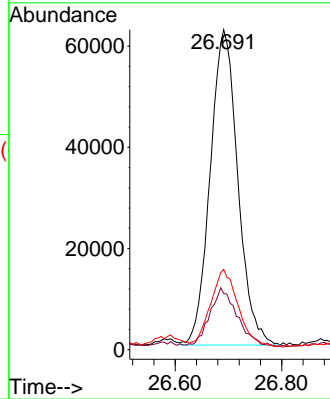
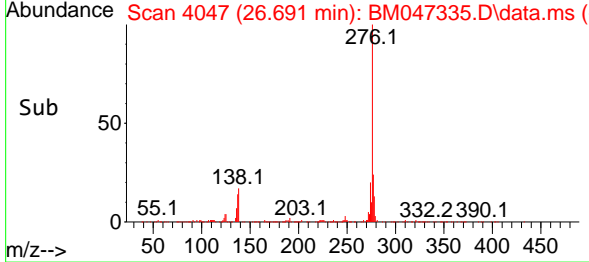
Instrument :
 BNA_M
 ClientSampleId :
 DNB-47-COMPOSITE



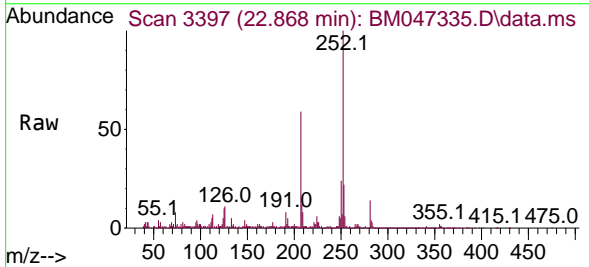
Tgt Ion: 276 Resp: 22480
 Ion Ratio Lower Upper
 276 100
 138 18.6 19.4 29.0
 277 23.8 20.1 30.1

Manual Integrations
 APPROVED

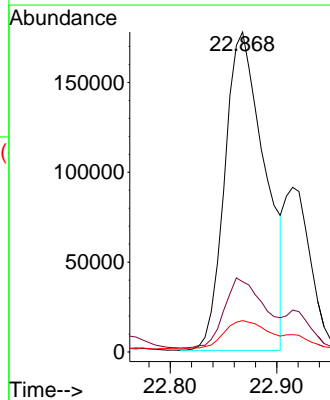
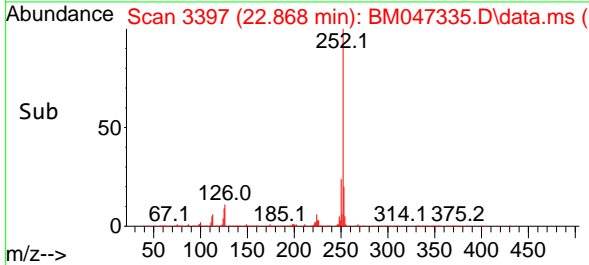
Reviewed By :Yogesh Patel 08/24/2024
 Supervised By :mohammad ahmed 08/24/2024

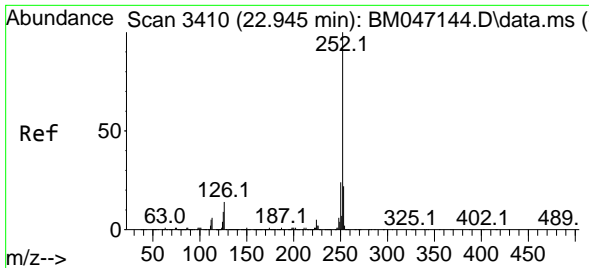


#88
 Benzo(b)fluoranthene
 Concen: 7.744 ng
 RT: 22.868 min Scan# 3397
 Delta R.T. -0.018 min
 Lab File: BM047335.D
 Acq: 23 Aug 2024 16:08



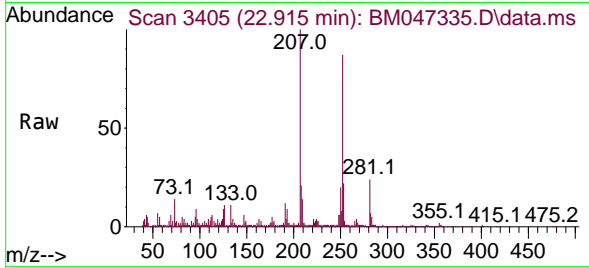
Tgt Ion: 252 Resp: 463866
 Ion Ratio Lower Upper
 252 100
 253 22.0 17.8 26.6
 125 9.8 7.4 11.0





#89
 Benzo(k)fluoranthene
 Concen: 2.679 ng m
 RT: 22.915 min Scan# 3410
 Delta R.T. -0.030 min
 Lab File: BM047335.D
 Acq: 23 Aug 2024 16:08

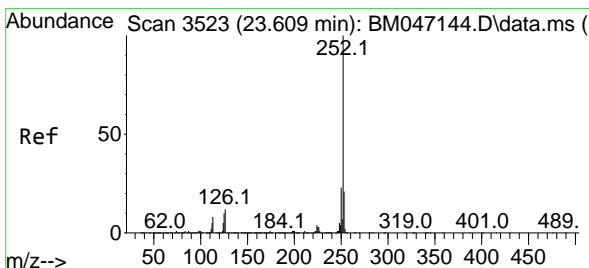
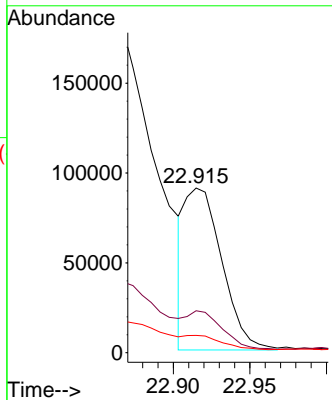
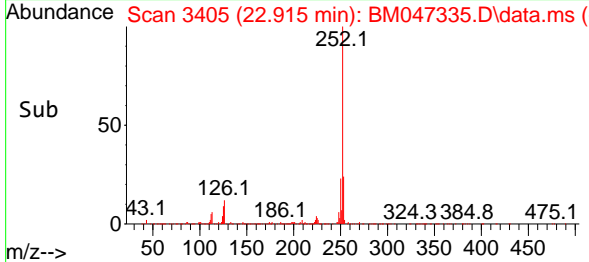
Instrument : BNA_M
 ClientSampleId : DNB-47-COMPOSITE



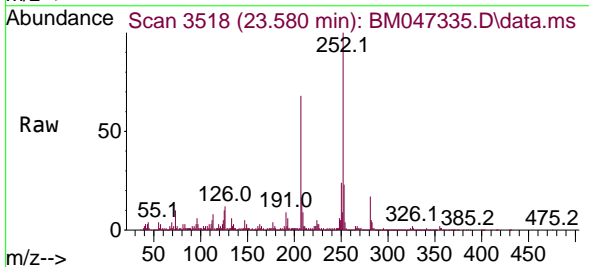
Tgt Ion:252 Resp: 151540
 Ion Ratio Lower Upper
 252 100
 253 25.5 17.7 26.5
 125 10.5 7.4 11.2

Manual Integrations
 APPROVED

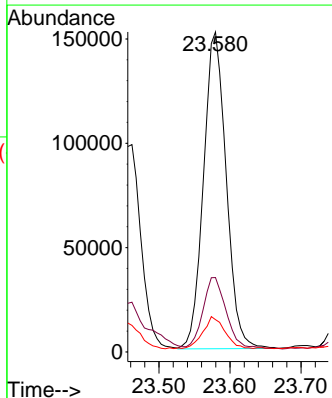
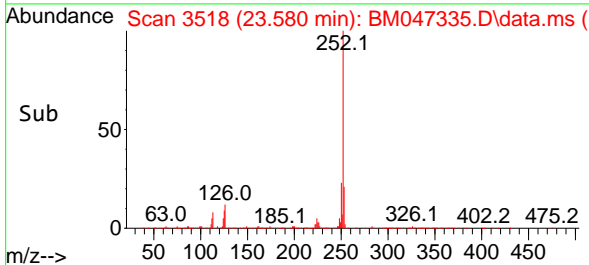
Reviewed By :Yogesh Patel 08/24/2024
 Supervised By :mohammad ahmed 08/24/2024

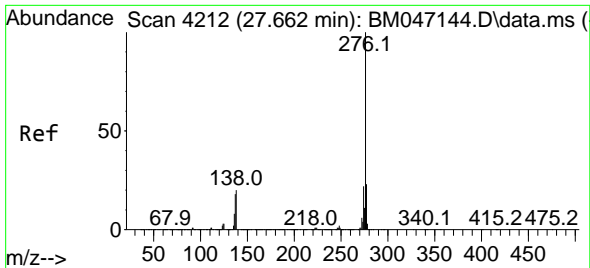


#90
 Benzo(a)pyrene
 Concen: 6.500 ng
 RT: 23.580 min Scan# 3518
 Delta R.T. -0.030 min
 Lab File: BM047335.D
 Acq: 23 Aug 2024 16:08



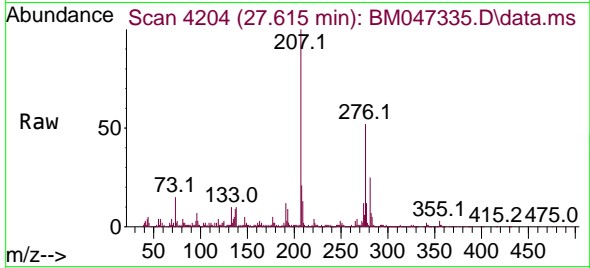
Tgt Ion:252 Resp: 337274
 Ion Ratio Lower Upper
 252 100
 253 23.3 17.1 25.7
 125 10.1 8.2 12.2





#92
 Benzo(g,h,i)perylene
 Concen: 4.110 ng
 RT: 27.615 min Scan# 41
 Delta R.T. -0.047 min
 Lab File: BM047335.D
 Acq: 23 Aug 2024 16:08

Instrument :
 BNA_M
 ClientSampleId :
 DNB-47-COMPOSITE



Tgt Ion:276 Resp: 225158
 Ion Ratio Lower Upper
 276 100
 277 23.6 18.8 28.2
 138 19.6 16.2 24.4

Manual Integrations
 APPROVED

Reviewed By :Yogesh Patel 08/24/2024
 Supervised By :mohammad ahmed 08/24/2024

