

Data Path : Z:\svoasrv\HPCHEM1\BNA_M\Data\BM083021\
 Data File : BM031996.D
 Acq On : 31 Aug 2021 22:07
 Operator : CG/JU
 Sample : M3517-06
 Misc :
 ALS Vial : 11 Sample Multiplier: 1

Instrument :
 BNA_M
 ClientSampled :
 C0AB9

Integration Parameters: LSCINT.P
 Integrator: RTE
 Smoothing : OFF Filtering: 5
 Sampling : 1 Min Area: 0.1 % of largest Peak
 Start Thrs: 0.2 Max Peaks: 100
 Stop Thrs : 0 Peak Location: TOP

If leading or trailing edge < 100 prefer < Baseline drop else tangent >
 Peak separation: 5

Method : Z:\SVOASRV\HPCHEM1\BNA_M\METHODS\SFAM-EPA-BM082821.M
 Title : SVOA CALIBRATION

Signal : TIC: BM031996.D\data.ms

peak #	R.T. min	first scan	max scan	last scan	PK TY	peak height	corr. area	corr. % max.	% of total
1	3.134	4	8	16	rVB	14785	25927	0.81%	0.100%
2	3.534	73	76	90	rBV	49025	101534	3.18%	0.392%
3	3.722	105	108	114	rVB4	4877	6731	0.21%	0.026%
4	3.816	120	124	127	rBV5	4715	6332	0.20%	0.024%
5	4.304	204	207	211	rBV5	2561	3777	0.12%	0.015%
6	4.857	299	301	308	rVB6	2960	4612	0.14%	0.018%
7	6.704	609	615	625	rVB	55362	100674	3.15%	0.388%
8	6.863	636	642	652	rBV	234449	381358	11.94%	1.471%
9	7.045	665	673	683	rBV	233757	381293	11.94%	1.471%
10	7.504	742	751	759	rBV	303202	479183	15.01%	1.848%
11	8.216	864	872	881	rBV	185084	306978	9.61%	1.184%
12	8.657	940	947	958	rBV	348154	577729	18.09%	2.229%
13	8.792	966	970	974	rVB5	2744	4804	0.15%	0.019%
14	9.045	1008	1013	1018	rVB3	8142	11802	0.37%	0.046%
15	9.363	1061	1067	1076	rBV	280357	453722	14.21%	1.750%
16	9.898	1151	1158	1172	rBV	381268	679605	21.28%	2.622%
17	10.063	1180	1186	1207	rBV	193171	405689	12.71%	1.565%
18	10.257	1213	1219	1228	rVB	445765	740674	23.20%	2.857%
19	10.416	1239	1246	1259	rBV	378280	671491	21.03%	2.590%
20	11.098	1356	1362	1368	rBV6	6289	11859	0.37%	0.046%
21	11.527	1427	1435	1439	rVB3	5056	8270	0.26%	0.032%
22	11.863	1484	1492	1497	rBV2	7095	11659	0.37%	0.045%
23	12.745	1638	1642	1647	rBV3	3091	4710	0.15%	0.018%
24	13.045	1690	1693	1697	rVB5	2318	3479	0.11%	0.013%
25	13.568	1776	1782	1793	rBV	961109	1382952	43.31%	5.335%
26	13.833	1820	1827	1838	rBV	1076199	1523944	47.73%	5.879%
27	14.145	1873	1880	1888	rVB	742735	1111915	34.82%	4.289%
28	14.327	1907	1911	1912	rBV2	3487	3982	0.12%	0.015%
29	14.410	1918	1925	1932	rBV2	33744	80896	2.53%	0.312%
30	15.145	2044	2050	2058	rBV	1472060	2132496	66.79%	8.226%
31	15.210	2058	2061	2069	rVB6	9133	14402	0.45%	0.056%
32	15.292	2069	2075	2087	rBV	405530	583267	18.27%	2.250%
33	15.386	2087	2091	2098	rVB3	8999	14830	0.46%	0.057%
34	15.609	2126	2129	2134	rVB3	8389	11636	0.36%	0.045%
35	16.686	2307	2312	2316	rBV4	5137	9638	0.30%	0.037%
36	16.904	2342	2349	2359	rBV	948771	1376010	43.09%	5.308%

Data Path : Z:\svoasrv\HPCHEM1\BNA_M\Data\BM083021\
 Data File : BM031996.D
 Acq On : 31 Aug 2021 22:07
 Operator : CG/JU
 Sample : M3517-06
 Misc :
 ALS Vial : 11 Sample Multiplier: 1

Instrument :
 BNA_M
 ClientSampleId :
 C0AB9

Integration Parameters: LSCINT.P

Integrator: RTE
 Smoothing : OFF Filtering: 5
 Sampling : 1 Min Area: 0.1 % of largest Peak
 Start Thrs: 0.2 Max Peaks: 100
 Stop Thrs : 0 Peak Location: TOP

If leading or trailing edge < 100 prefer < Baseline drop else tangent >
 Peak separation: 5

Method : Z:\SVOASRV\HPCHEM1\BNA_M\METHODS\SFAM-EPA-BM082821.M
 Title : SVOA CALIBRATION

37	17.004	2359	2366	2378	rVV	1901417	2682396	84.01%	10.347%
38	17.104	2380	2383	2386	rVV3	3241	5497	0.17%	0.021%
39	17.209	2397	2401	2409	rBV9	3475	7191	0.23%	0.028%
40	17.274	2409	2412	2416	rBV3	2449	4323	0.14%	0.017%
41	17.451	2439	2442	2446	rVB6	3183	3970	0.12%	0.015%
42	17.598	2461	2467	2474	rBV	40670	50403	1.58%	0.194%
43	17.815	2499	2504	2510	rBV	73651	98362	3.08%	0.379%
44	17.886	2512	2516	2521	rVB2	20298	29305	0.92%	0.113%
45	18.109	2550	2554	2558	rBV6	4095	4718	0.15%	0.018%
46	18.780	2665	2668	2672	rVB5	8015	8392	0.26%	0.032%
47	18.868	2679	2683	2688	rVB3	17840	25819	0.81%	0.100%
48	18.939	2691	2695	2701	rVV	17598	24123	0.76%	0.093%
49	19.109	2720	2724	2731	rVV3	39049	54756	1.71%	0.211%
50	19.203	2735	2740	2746	rVB8	6539	14011	0.44%	0.054%
51	19.309	2751	2758	2768	rVV	2383453	3193023	100.00%	12.317%
52	20.844	3015	3019	3028	rBV3	72538	123838	3.88%	0.478%
53	21.109	3058	3064	3070	rBV	1209822	1579660	49.47%	6.093%
54	23.115	3398	3405	3418	rVB	1598817	2970587	93.03%	11.459%
55	23.244	3421	3427	3435	rVB2	813444	1413705	44.27%	5.453%

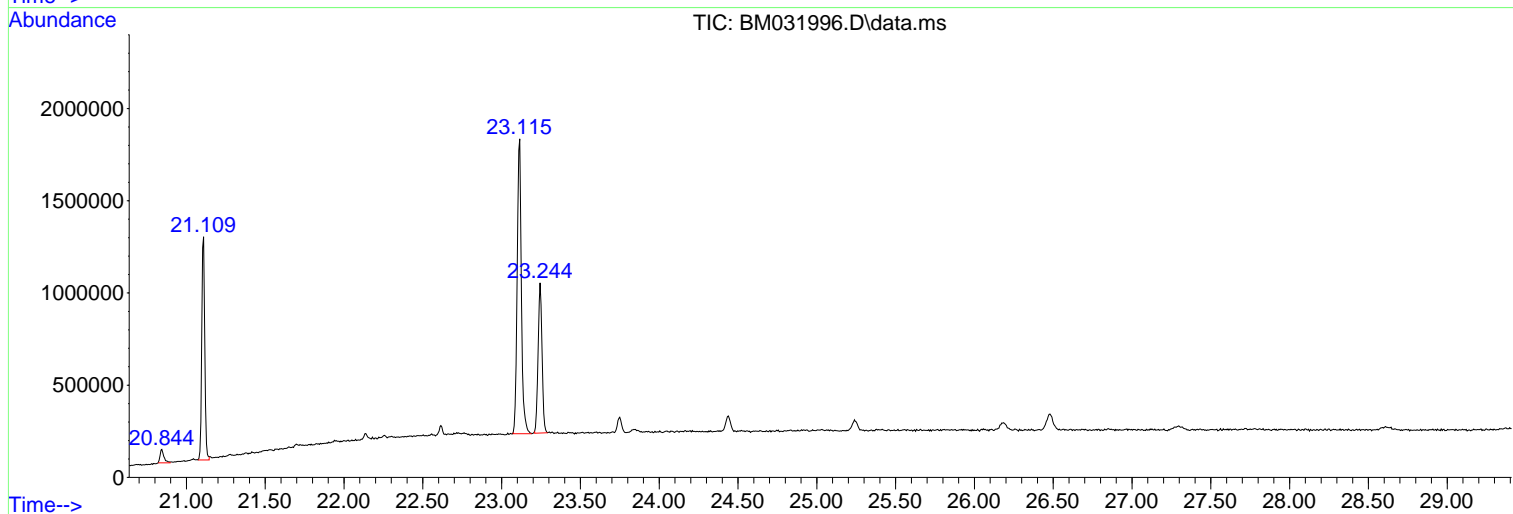
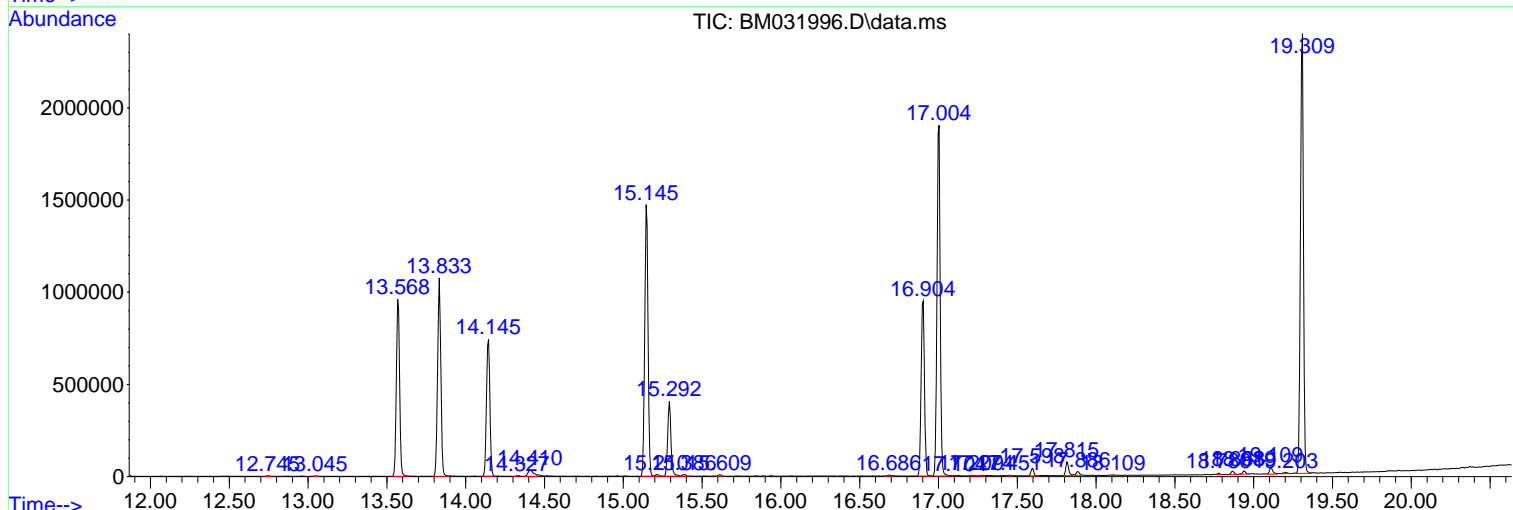
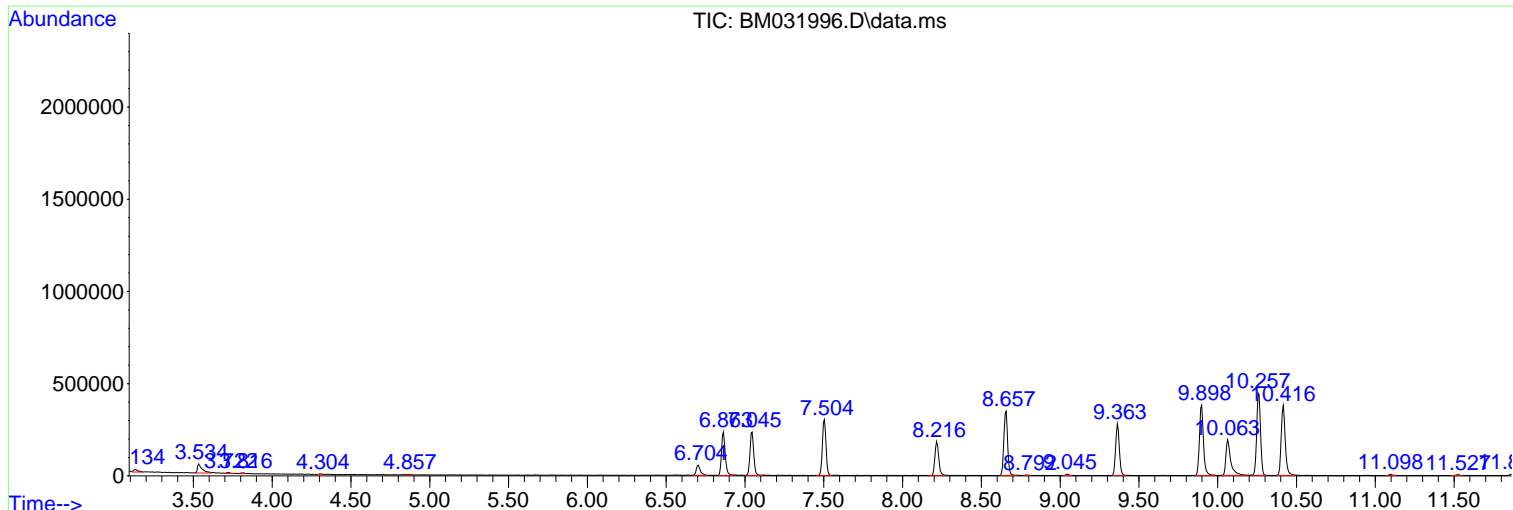
Sum of corrected areas: 25923939

Data Path : Z:\svoasrv\HPCHEM1\BNA_M\Data\BM083021\
 Data File : BM031996.D
 Acq On : 31 Aug 2021 22:07
 Operator : CG/JU
 Sample : M3517-06
 Misc :
 ALS Vial : 11 Sample Multiplier: 1

Instrument :
 BNA_M
Client Sampled :
 C0AB9

Quant Method : Z:\SVOASRV\HPCHEM1\BNA_M\METHODS\SFAM-EPA-BM082821.M
 Quant Title : SVOA CALIBRATION

TIC Library : C:\Database\NIST20.L
 TIC Integration Parameters: LSCINT.P



Data Path : Z:\svoasrv\HPCHEM1\BNA_M\Data\BM083021\
 Data File : BM031996.D
 Acq On : 31 Aug 2021 22:07
 Operator : CG/JU
 Sample : M3517-06
 Misc :
 ALS Vial : 11 Sample Multiplier: 1

Instrument :
 BNA_M
 ClientSampleId :
 C0AB9

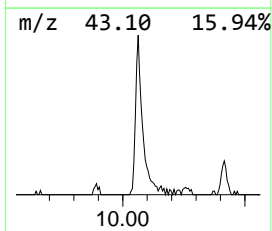
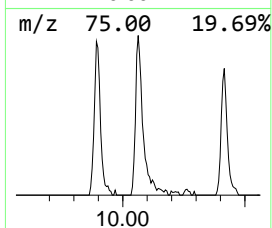
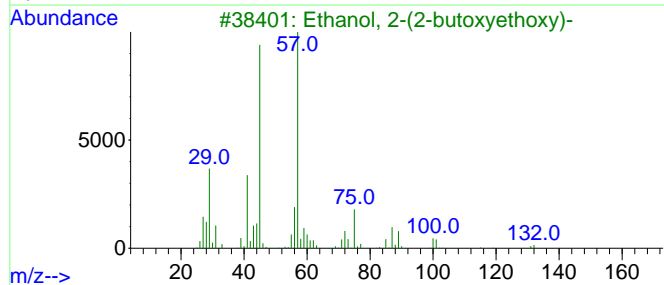
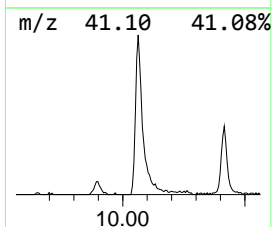
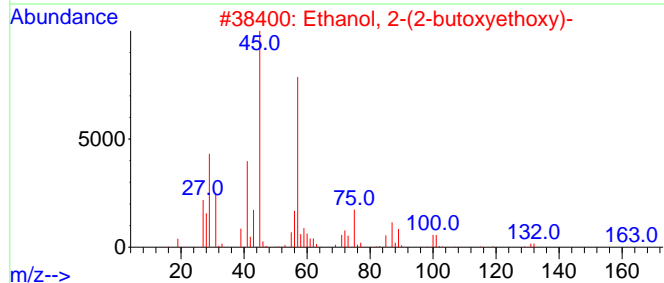
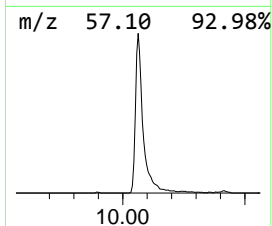
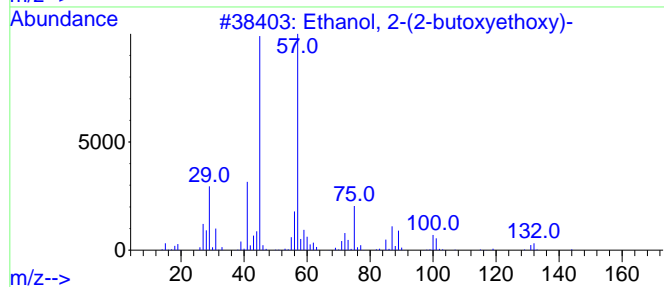
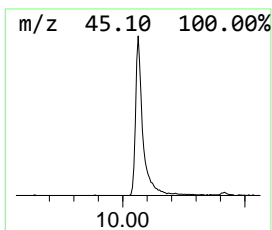
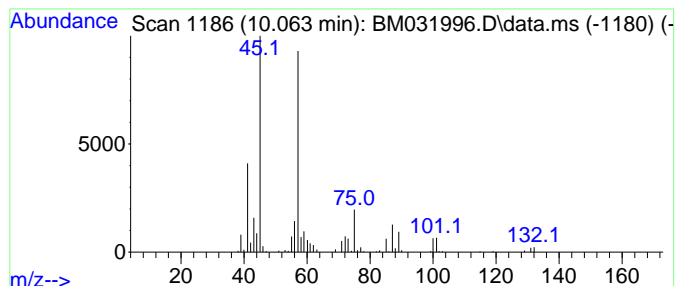
Quant Method : Z:\SVOASRV\HPCHEM1\BNA_M\METHODS\SFAM-EPA-BM082821.M
 Quant Title : SVOA CALIBRATION

TIC Library : C:\Database\NIST20.L
 TIC Integration Parameters: LSCINT.P

 Peak Number 1 Ethanol, 2-(2-butoxyethoxy)- Concentration Rank 1

R.T.	EstConc	Area	Relative to ISTD	R.T.
10.063	10.95 ng/ul	405689	Naphthalene-d8	10.263

Hit#	of 5	Tentative ID	MW	MolForm	CAS#	Qual
1		Ethanol, 2-(2-butoxyethoxy)-	162	C8H18O3	000112-34-5	90
2		Ethanol, 2-(2-butoxyethoxy)-	162	C8H18O3	000112-34-5	90
3		Ethanol, 2-(2-butoxyethoxy)-	162	C8H18O3	000112-34-5	90
4		Ethanol, 2-(2-butoxyethoxy)-	162	C8H18O3	000112-34-5	72
5		Ethylene glycol monoisobutyl ether	118	C6H14O2	004439-24-1	64



Data Path : Z:\svoasrv\HPCHEM1\BNA_M\Data\BM083021\
Data File : BM031996.D
Acq On : 31 Aug 2021 22:07
Operator : CG/JU
Sample : M3517-06
Misc :
ALS Vial : 11 Sample Multiplier: 1

Instrument :
BNA_M
ClientSampleId :
C0AB9

Quant Method : Z:\SVOASRV\HPCHEM1\BNA_M\METHODS\SFAM-EPA-BM082821.M
Quant Title : SVOA CALIBRATION

TIC Library : C:\Database\NIST20.L
TIC Integration Parameters: LSCINT.P

TIC Top Hit name	RT	EstConc	Units	Response	--Internal Standard--			
					#	RT	Resp	Conc
Ethanol, 2-(2-b...	10.063	10.9	ng/u1	405689	2	10.263	740674	20.0