

Data Path : Z:\svoasrv\HPCHEM1\BNA_M\Data\BM090122\
 Data File : BM036476.D
 Acq On : 01 Sep 2022 17:00
 Operator : CG/JU
 Sample : PB147416BS
 Misc :
 ALS Vial : 4 Sample Multiplier: 1

Instrument :
 BNA_M
 ClientSampleId :
 SLCS416

Quant Time: Sep 02 01:36:07 2022
 Quant Method : Z:\svoasrv\HPCHEM1\BNA_M\Methods\SFAM-EPA-BM081622.M
 Quant Title : SVOA CALIBRATION
 QLast Update : Fri Sep 02 01:33:23 2022
 Response via : Initial Calibration

Compound	R.T.	QIon	Response	Conc	Units	Dev(Min)
Internal Standards						
1) 1,4-Dichlorobenzene-d4	7.722	152	188361	20.000	ng/ul	0.00
20) Naphthalene-d8	10.522	136	877056	20.000	ng/ul	0.00
38) Acenaphthene-d10	14.374	164	562634	20.000	ng/ul	0.00
64) Phenanthrene-d10	17.121	188	1192863	20.000	ng/ul	0.00
79) Chrysene-d12	21.315	240	1270548	20.000	ng/ul	0.00
88) Perylene-d12	23.609	264	1262861	20.000	ng/ul	0.00
System Monitoring Compounds						
3) 1,4-Dioxane-d8	3.128	96	29885	6.047	ng/uL	0.00
4) Pyridine-d5	3.557	84	420360	30.841	ng/ul	0.00
7) Phenol-d5	6.904	99	581831	36.188	ng/ul	0.00
9) Bis-(2-Chloroethyl)eth...	7.069	67	386564	38.196	ng/ul	0.00
11) 2-Chlorophenol-d4	7.257	132	472890	37.434	ng/ul	0.00
15) 4-Methylphenol-d8	8.451	113	481475	40.106	ng/ul	0.00
21) Nitrobenzene-d5	8.898	128	246751	37.107	ng/ul	0.00
24) 2-Nitrophenol-d4	9.616	143	255851	37.932	ng/ul	0.00
28) 2,4-Dichlorophenol-d3	10.151	165	455693	37.810	ng/ul	0.00
31) 4-Chloroaniline-d4	10.675	131	1179833	63.147	ng/ul	0.00
46) Dimethylphthalate-d6	13.798	166	1429424	40.158	ng/ul	0.00
49) Acenaphthylene-d8	14.069	160	1769820	39.865	ng/ul	0.00
54) 4-Nitrophenol-d4	14.604	143	287661	42.651	ng/ul	0.00
60) Fluorene-d10	15.368	176	1280461	39.810	ng/ul	0.00
65) 4,6-Dinitro-2-methylph...	15.510	200	237688	38.758	ng/ul	0.00
73) Anthracene-d10	17.221	188	1986487	37.452	ng/ul	0.00
81) Pyrene-d10	19.521	212	2407520	36.528	ng/ul	0.00
92) Benzo(a)pyrene-d12	23.462	264	2391738	38.628	ng/ul	0.00
Target Compounds						
2) 1,4-Dioxane	3.163	88	61044	11.726	ng/uL	98
5) Pyridine	3.575	79	423391	30.071	ng/ul	97
6) Benzaldehyde	6.875	77	315784	47.815	ng/ul	94
8) Phenol	6.934	94	595229	35.607	ng/ul	97
10) Bis(2-Chloroethyl)ether	7.163	93	470463	35.187	ng/ul	99
12) 2-Chlorophenol	7.287	128	460226	34.839	ng/ul	98
13) 2-Methylphenol	8.181	108	445057	36.118	ng/ul	94
14) 2,2'-oxybis(1-Chloropr...	8.269	45	688397	38.483	ng/ul	99
16) Acetophenone	8.557	105	731743	37.897	ng/ul	95
17) N-Nitroso-di-n-propyla...	8.551	70	376927	39.221	ng/ul	98
18) 4-Methylphenol	8.516	108	494103	37.460	ng/ul	99
19) Hexachloroethane	8.792	117	189746	34.333	ng/ul	84
22) Nitrobenzene	8.939	77	569499	36.145	ng/ul	97
23) Isophorone	9.469	82	1054853	37.700	ng/ul	96
25) 2-Nitrophenol	9.645	139	264367	35.180	ng/ul	96
26) 2,4-Dimethylphenol	9.710	107	502301	33.423	ng/ul	97
27) Bis(2-Chloroethoxy)met...	9.951	93	661892	36.337	ng/ul	99
29) 2,4-Dichlorophenol	10.181	162	435109	35.287	ng/ul	99
30) Naphthalene	10.575	128	1591057	34.564	ng/ul	99
32) 4-Chloroaniline	10.698	127	601796	31.667	ng/ul	98
33) Hexachlorobutadiene	10.851	225	253175	32.682	ng/ul	98
34) Caprolactam	11.498	113	72374	19.589	ng/ul	97
35) 4-Chloro-3-methylphenol	11.833	107	457970	36.733	ng/ul	99
36) 2-Methylnaphthalene	12.192	142	964311	33.388	ng/ul	99

Data Path : Z:\svoasrv\HPCHEM1\BNA_M\Data\BM090122\
 Data File : BM036476.D
 Acq On : 01 Sep 2022 17:00
 Operator : CG/JU
 Sample : PB147416BS
 Misc :
 ALS Vial : 4 Sample Multiplier: 1

Instrument :
 BNA_M
 ClientSampleId :
 SLCS416

Quant Time: Sep 02 01:36:07 2022
 Quant Method : Z:\svoasrv\HPCHEM1\BNA_M\Methods\SFAM-EPA-BM081622.M
 Quant Title : SVOA CALIBRATION
 QLast Update : Fri Sep 02 01:33:23 2022
 Response via : Initial Calibration

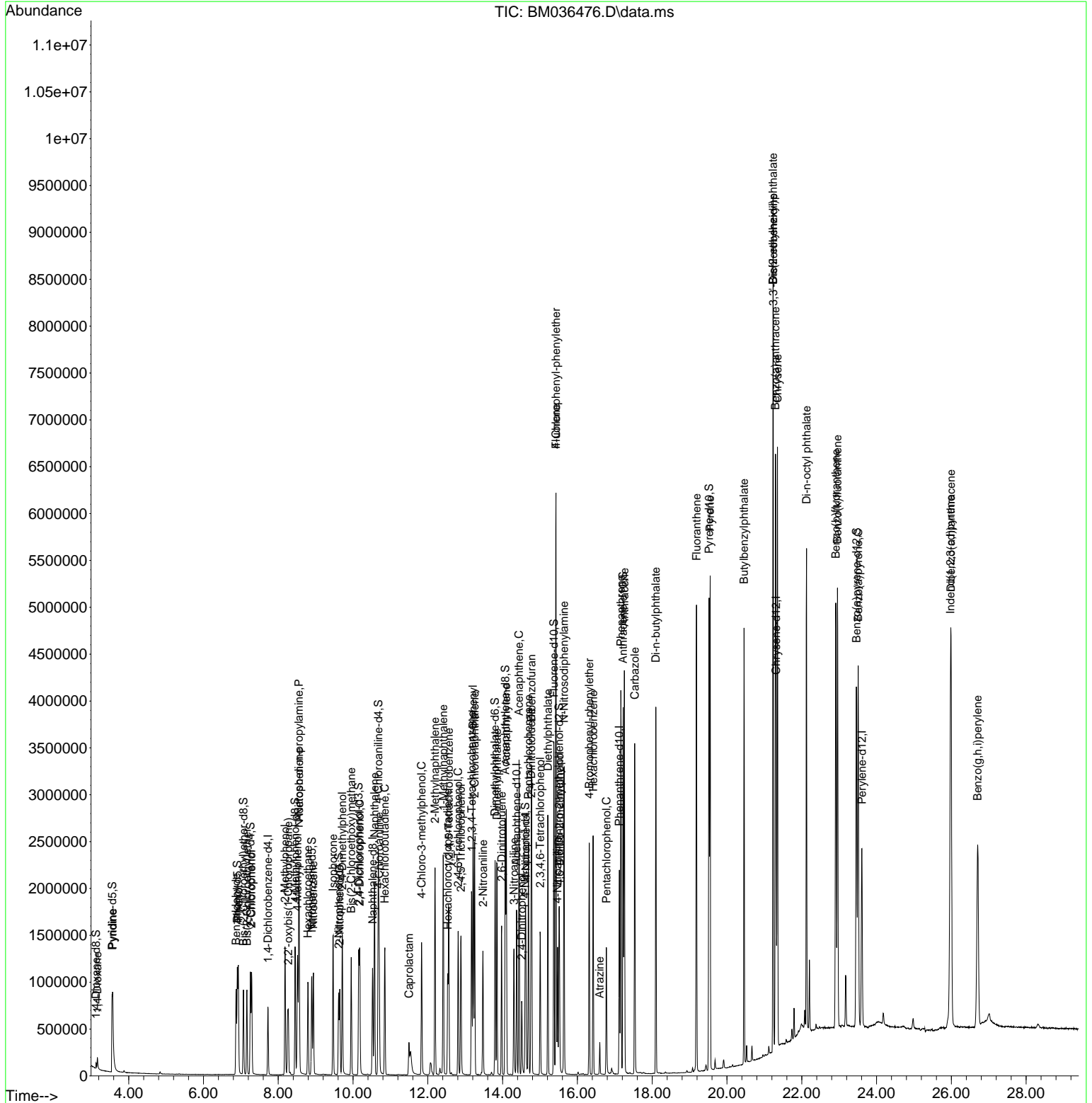
Compound	R.T.	QIon	Response	Conc	Units	Dev(Min)
37) 1-Methylnaphthalene	12.410	142	1042196	35.831	ng/ul#	98
39) 1,2,4,5-Tetrachloroben...	12.563	216	498556	32.059	ng/ul	98
40) Hexachlorocyclopentadiene	12.533	237	256439	27.796	ng/ul	99
41) 2,4,6-Trichlorophenol	12.810	196	309577	31.636	ng/ul	98
42) 2,4,5-Trichlorophenol	12.886	196	346644	33.396	ng/ul	99
43) 1,1'-Biphenyl	13.210	154	1436167	33.939	ng/ul	99
44) 2-Chloronaphthalene	13.251	162	1091424	33.612	ng/ul	98
45) 2-Nitroaniline	13.474	65	342799	38.986	ng/ul	95
47) Dimethylphthalate	13.851	163	1362605	37.190	ng/ul	100
48) 2,6-Dinitrotoluene	13.974	165	274182	39.662	ng/ul#	87
50) Acenaphthylene	14.098	152	1803469	34.448	ng/ul	99
51) 3-Nitroaniline	14.304	138	309241	40.904	ng/ul	99
52) Acenaphthene	14.439	153	1240966	36.367	ng/ul	98
53) 2,4-Dinitrophenol	14.516	184	150655	39.988	ng/ul	96
55) 4-Nitrophenol	14.621	109	219812	41.249	ng/ul	82
56) Dibenzofuran	14.774	168	1692709	35.750	ng/ul	96
57) 2,4-Dinitrotoluene	14.763	165	408648	41.681	ng/ul#	86
58) 2,3,4,6-Tetrachlorophenol	15.004	232	263565	33.443	ng/ul#	88
59) Diethylphthalate	15.210	149	1452348	40.212	ng/ul	99
61) Fluorene	15.427	166	1448536	38.571	ng/ul	98
62) 4-Chlorophenyl-phenyle...	15.427	204	664779	37.894	ng/ul	98
63) 4-Nitroaniline	15.468	138	308454	43.738	ng/ul#	86
66) 4,6-Dinitro-2-methylph...	15.521	198	226533	36.535	ng/ul#	90
67) N-Nitrosodiphenylamine	15.645	169	1160271	34.023	ng/ul	99
68) 4-Bromophenyl-phenylether	16.315	248	391102	35.409	ng/ul	96
69) Hexachlorobenzene	16.421	284	455666	34.042	ng/ul	94
70) Atrazine	16.598	200	50832	4.362	ng/ul	98
71) Pentachlorophenol	16.774	266	203571	27.586	ng/ul	98
72) Phenanthrene	17.162	178	2256502	35.983	ng/ul	98
74) Anthracene	17.257	178	2282826	36.311	ng/ul	98
75) 1,2,3,4-Tetrachloroben...	13.174	216	526722	29.429	ng/ul	98
76) Pentachlorobenzene	14.692	250	531777	31.820	ng/ul	100
77) Carbazole	17.533	167	2095135	35.593	ng/ul	99
78) Di-n-butylphthalate	18.098	149	2629127	40.836	ng/ul	99
80) Fluoranthene	19.186	202	2668166	33.497	ng/ul	99
82) Pyrene	19.551	202	2840799	34.176	ng/ul	98
83) Butylbenzylphthalate	20.456	149	1223579	39.348	ng/ul	91
84) 3,3'-Dichlorobenzidine	21.239	252	923579	35.300	ng/ul	98
85) Benzo(a)anthracene	21.297	228	2810440	36.809	ng/ul	99
86) Bis(2-ethylhexyl)phtha...	21.233	149	1890860	44.040	ng/ul	98
87) Chrysene	21.350	228	2683930	35.775	ng/ul	99
89) Di-n-octyl phthalate	22.127	149	3172482	42.259	ng/ul	100
90) Benzo(b)fluoranthene	22.909	252	2866645	37.232	ng/ul	98
91) Benzo(k)fluoranthene	22.956	252	2860784	39.054	ng/ul	98
93) Benzo(a)pyrene	23.509	252	2510159	33.139	ng/ul	97
94) Indeno(1,2,3-cd)pyrene	25.980	276	3023723	33.953	ng/ul	96
95) Dibenzo(a,h)anthracene	25.991	278	2528894	32.964	ng/ul	98
96) Benzo(g,h,i)perylene	26.703	276	2351114	30.872	ng/ul	98

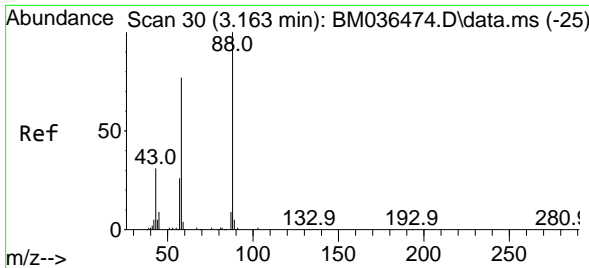
(#) = qualifier out of range (m) = manual integration (+) = signals summed

Data Path : Z:\svoasrv\HPCHEM1\BNA_M\Data\BM090122\
 Data File : BM036476.D
 Acq On : 01 Sep 2022 17:00
 Operator : CG/JU
 Sample : PB147416BS
 Misc :
 ALS Vial : 4 Sample Multiplier: 1

Instrument :
 BNA_M
 ClientSampleId :
 SLCS416

Quant Time: Sep 02 01:36:07 2022
 Quant Method : Z:\svoasrv\HPCHEM1\BNA_M\Methods\SFAM-EPA-BM081622.M
 Quant Title : SVOA CALIBRATION
 QLast Update : Fri Sep 02 01:33:23 2022
 Response via : Initial Calibration

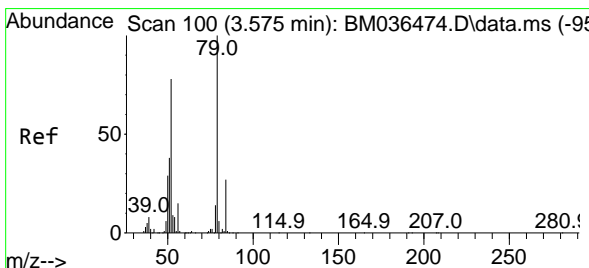
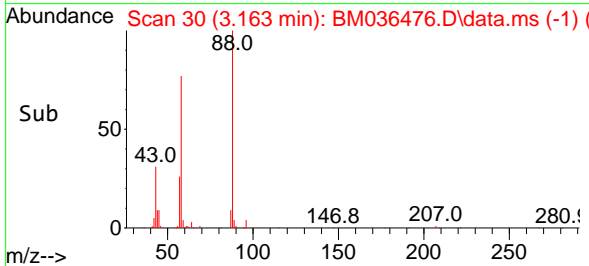
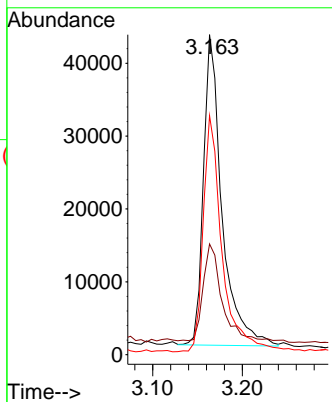
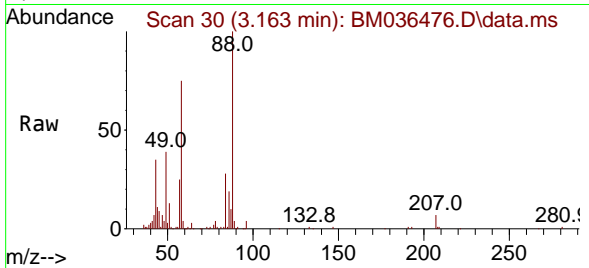




#2
 1,4-Dioxane
 Concen: 11.726 ng/uL
 RT: 3.163 min Scan# 30
 Delta R.T. -0.000 min
 Lab File: BM036476.D
 Acq: 01 Sep 2022 17:00

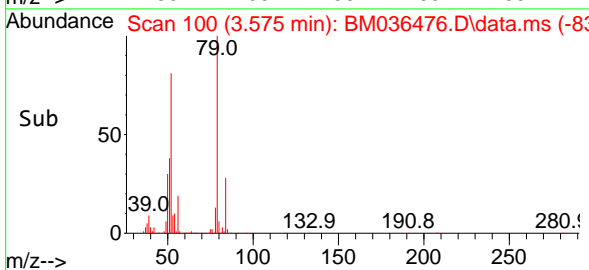
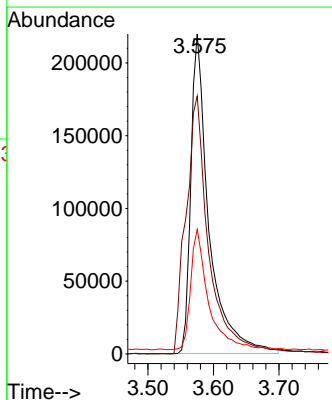
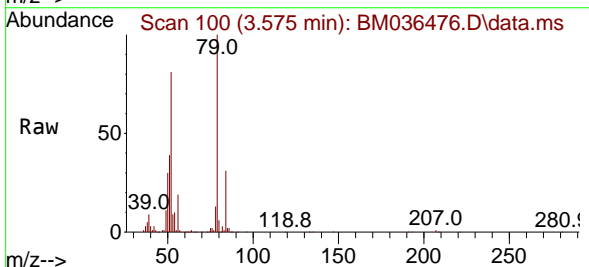
Instrument :
 BNA_M
 ClientSampleId :
 SLCS416

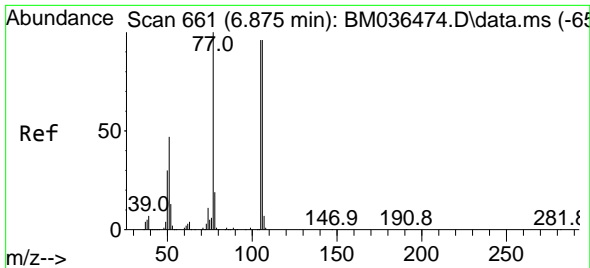
Tgt Ion	Resp	Lower	Upper
88	61044		
43	34.6	27.8	41.8
58	74.7	61.8	92.8



#5
 Pyridine
 Concen: 30.071 ng/uL
 RT: 3.575 min Scan# 100
 Delta R.T. -0.000 min
 Lab File: BM036476.D
 Acq: 01 Sep 2022 17:00

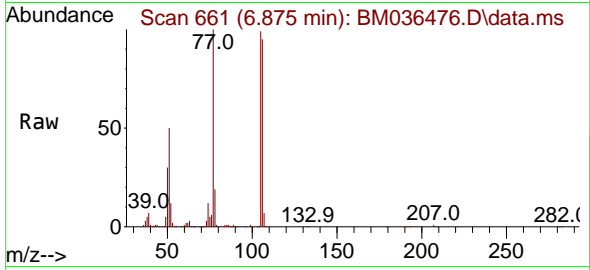
Tgt Ion	Resp	Lower	Upper
79	423391		
52	80.6	67.8	101.6
51	39.0	31.4	47.0



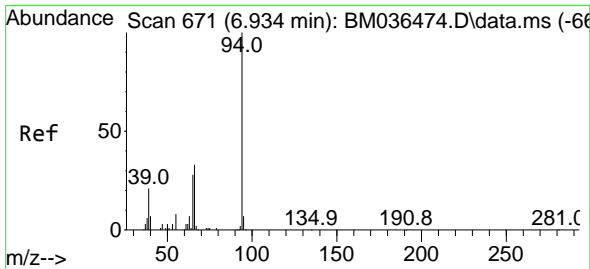
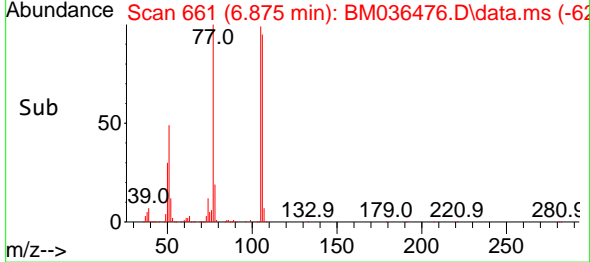
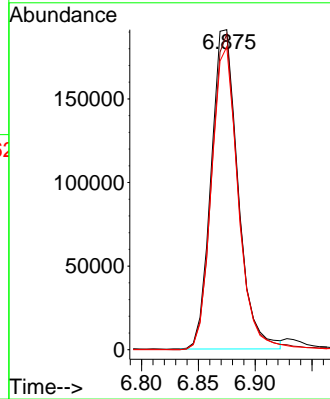


#6
Benzaldehyde
Concen: 47.815 ng/ul
RT: 6.875 min Scan# 661
Delta R.T. -0.000 min
Lab File: BM036476.D
Acq: 01 Sep 2022 17:00

Instrument :
BNA_M
ClientSampleId :
SLCS416

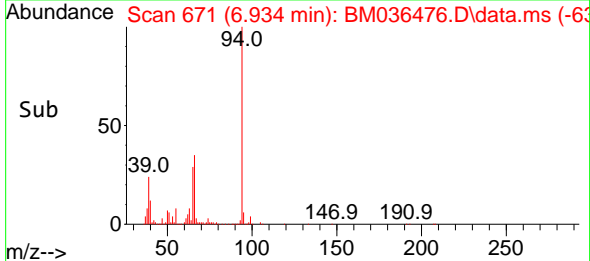
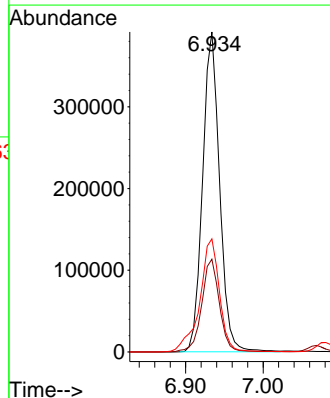
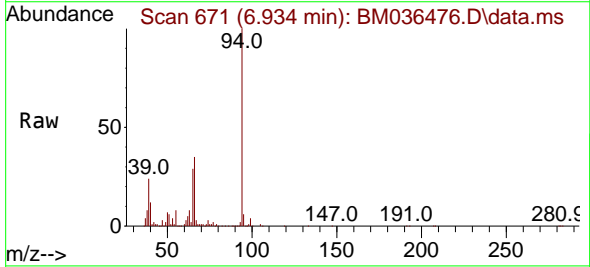


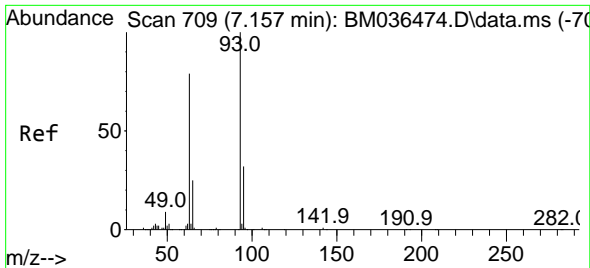
Tgt Ion: 77 Resp: 315784
Ion Ratio Lower Upper
77 100
105 98.6 84.6 127.0
106 94.7 80.3 120.5



#8
Phenol
Concen: 35.607 ng/ul
RT: 6.934 min Scan# 671
Delta R.T. -0.000 min
Lab File: BM036476.D
Acq: 01 Sep 2022 17:00

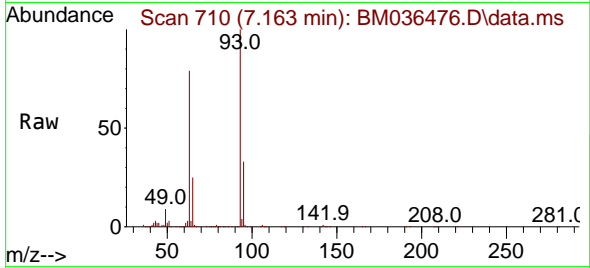
Tgt Ion: 94 Resp: 595229
Ion Ratio Lower Upper
94 100
65 29.0 21.3 31.9
66 35.4 27.4 41.0



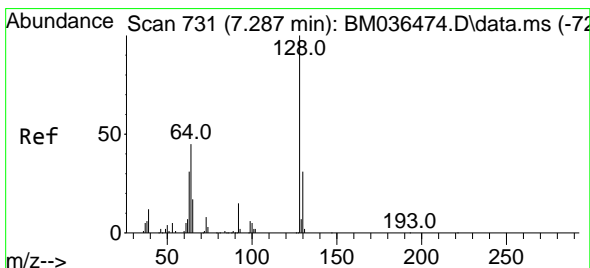
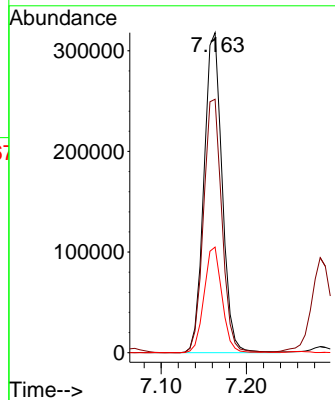
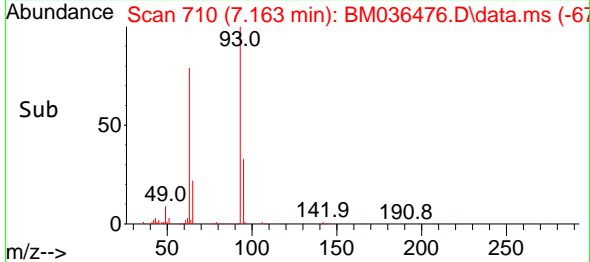


#10
 Bis(2-Chloroethyl)ether
 Concen: 35.187 ng/ul
 RT: 7.163 min Scan# 710
 Delta R.T. 0.006 min
 Lab File: BM036476.D
 Acq: 01 Sep 2022 17:00

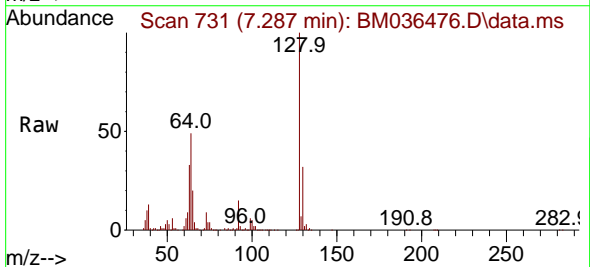
Instrument :
 BNA_M
 ClientSampleId :
 SLCS416



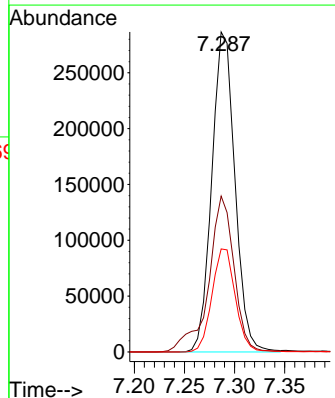
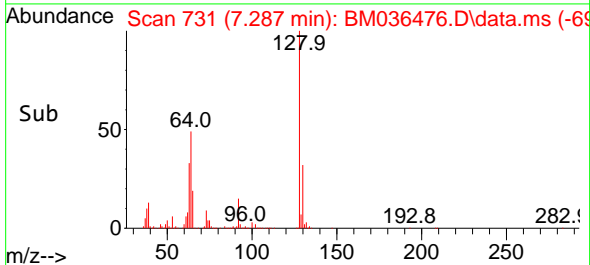
Tgt Ion: 93 Resp: 470463
 Ion Ratio Lower Upper
 93 100
 63 79.2 64.0 96.0
 95 33.0 25.8 38.6

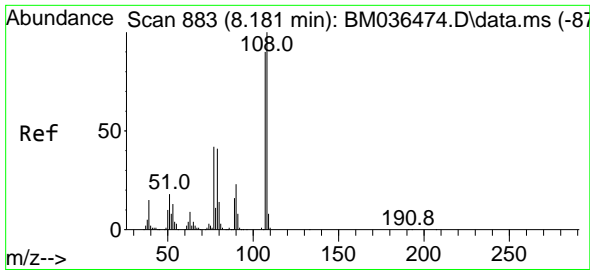


#12
 2-Chlorophenol
 Concen: 34.839 ng/ul
 RT: 7.287 min Scan# 731
 Delta R.T. -0.000 min
 Lab File: BM036476.D
 Acq: 01 Sep 2022 17:00



Tgt Ion: 128 Resp: 460226
 Ion Ratio Lower Upper
 128 100
 64 48.7 36.9 55.3
 130 32.2 25.6 38.4

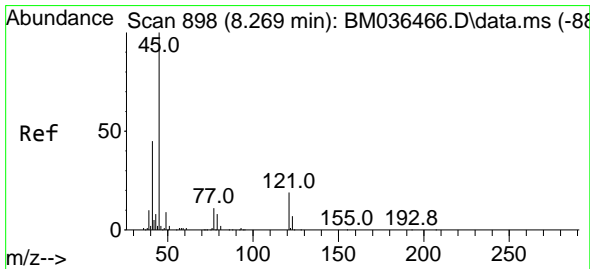
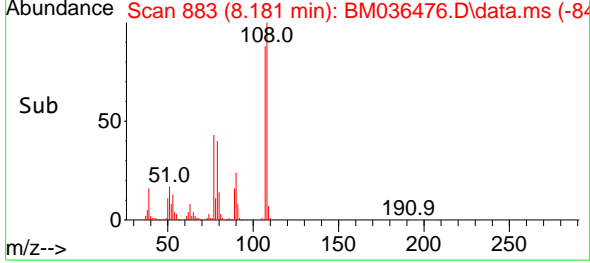
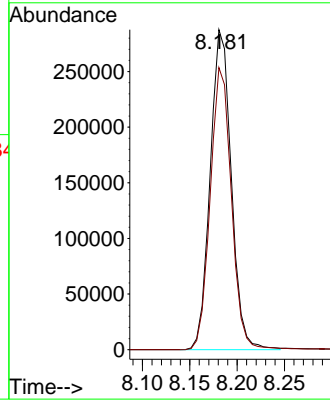
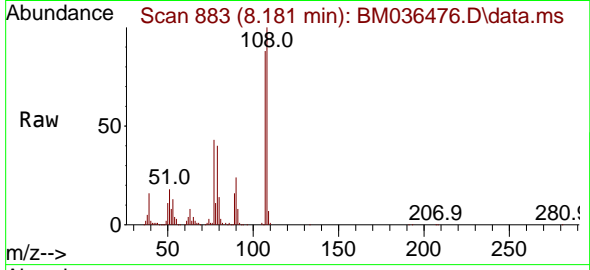




#13
 2-Methylphenol
 Concen: 36.118 ng/ul
 RT: 8.181 min Scan# 883
 Delta R.T. -0.000 min
 Lab File: BM036476.D
 Acq: 01 Sep 2022 17:00

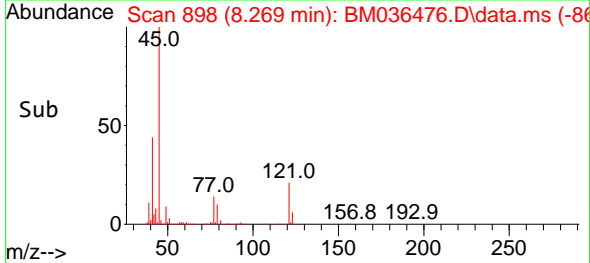
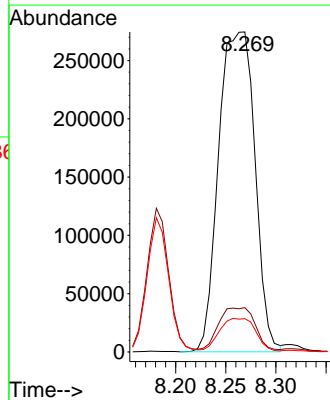
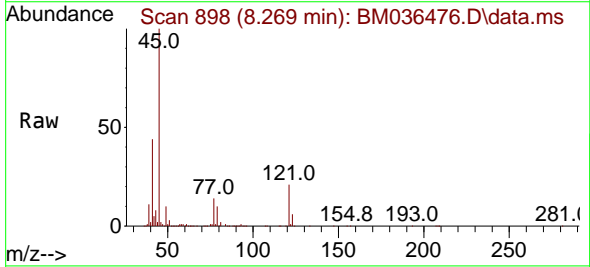
Instrument :
 BNA_M
 ClientSampleId :
 SLCS416

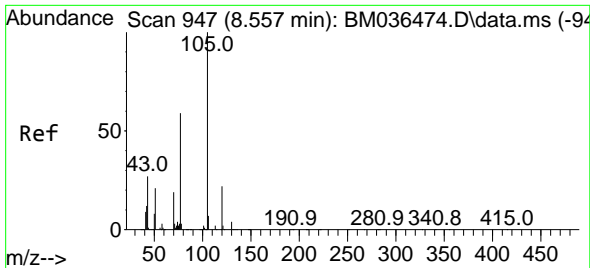
Tgt Ion: 108 Resp: 445057
 Ion Ratio Lower Upper
 108 100
 107 88.1 75.0 112.4



#14
 2,2'-oxybis(1-Chloropropane)
 Concen: 38.483 ng/ul
 RT: 8.269 min Scan# 898
 Delta R.T. 0.006 min
 Lab File: BM036476.D
 Acq: 01 Sep 2022 17:00

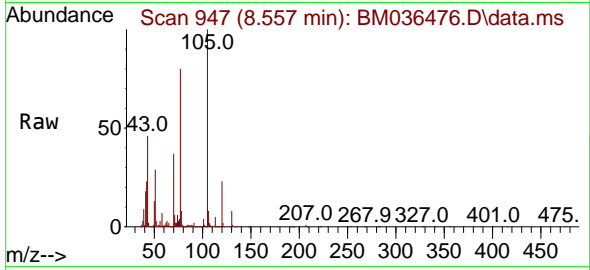
Tgt Ion: 45 Resp: 688397
 Ion Ratio Lower Upper
 45 100
 77 13.8 10.6 15.8
 79 10.4 8.3 12.5



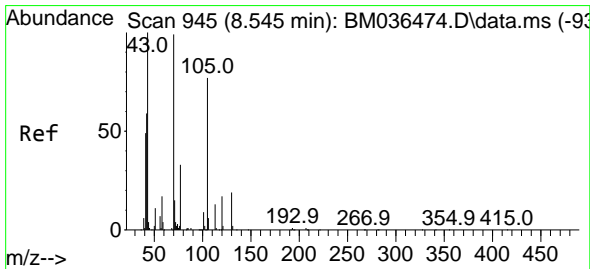
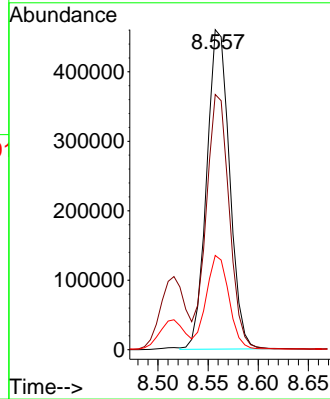
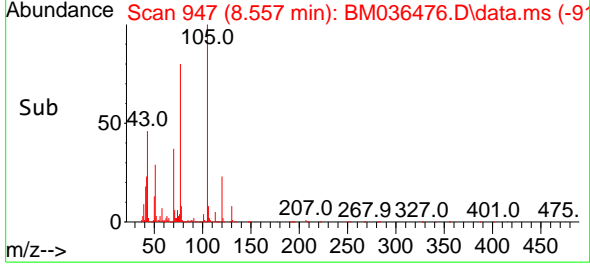


#16
 Acetophenone
 Concen: 37.897 ng/ul
 RT: 8.557 min Scan# 947
 Delta R.T. -0.000 min
 Lab File: BM036476.D
 Acq: 01 Sep 2022 17:00

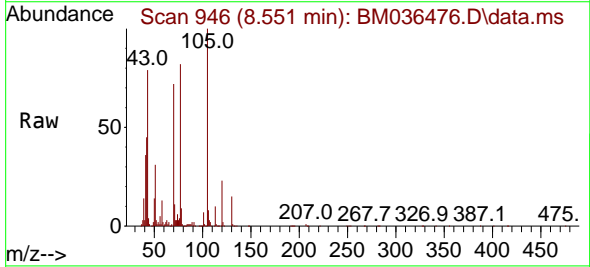
Instrument : BNA_M
 ClientSampleId : SLCS416



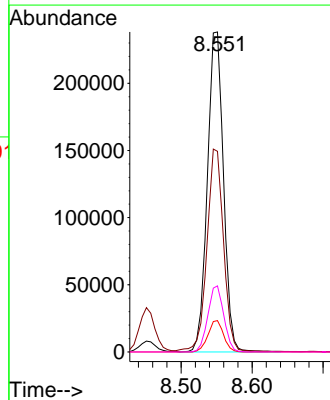
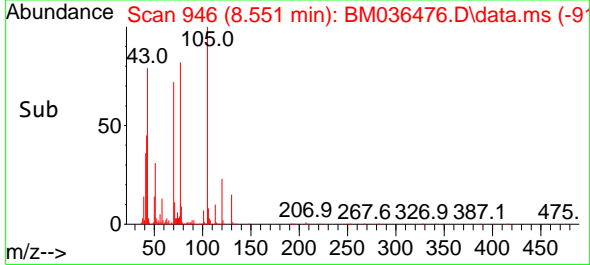
Tgt Ion: 105 Resp: 731743
 Ion Ratio Lower Upper
 105 100
 77 79.8 59.8 89.6
 51 29.5 22.1 33.1

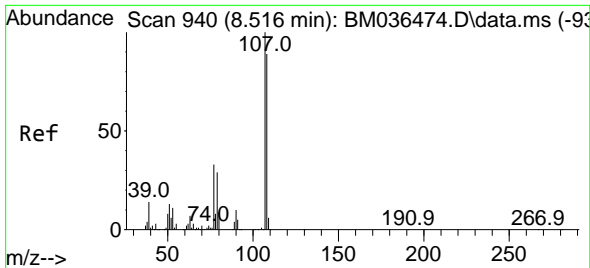


#17
 N-Nitroso-di-n-propylamine
 Concen: 39.221 ng/ul
 RT: 8.551 min Scan# 946
 Delta R.T. 0.006 min
 Lab File: BM036476.D
 Acq: 01 Sep 2022 17:00



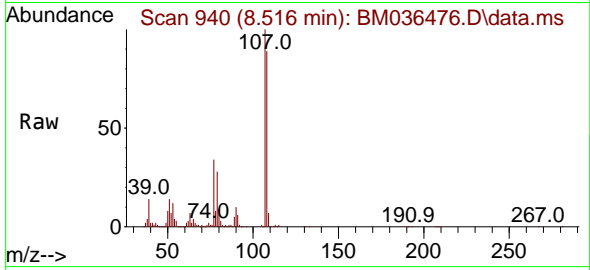
Tgt Ion: 70 Resp: 376927
 Ion Ratio Lower Upper
 70 100
 42 62.7 49.6 74.4
 101 9.8 8.1 12.1
 130 20.6 18.4 27.6



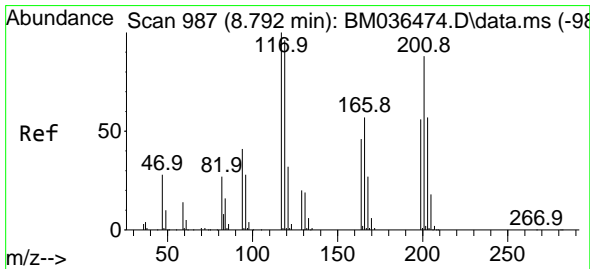
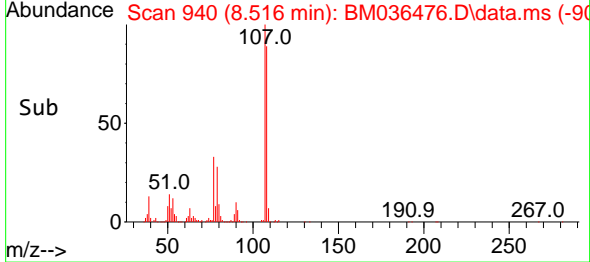
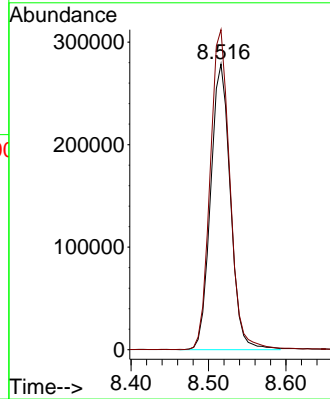


#18
 4-Methylphenol
 Concen: 37.460 ng/ul
 RT: 8.516 min Scan# 940
 Delta R.T. -0.000 min
 Lab File: BM036476.D
 Acq: 01 Sep 2022 17:00

Instrument :
 BNA_M
 ClientSampleId :
 SLCS416

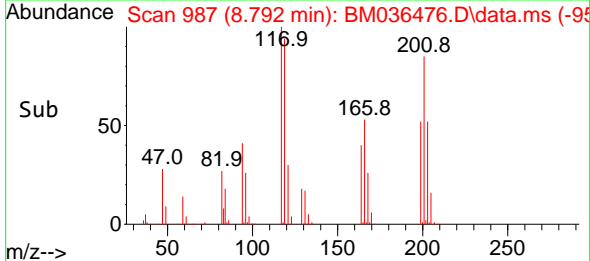
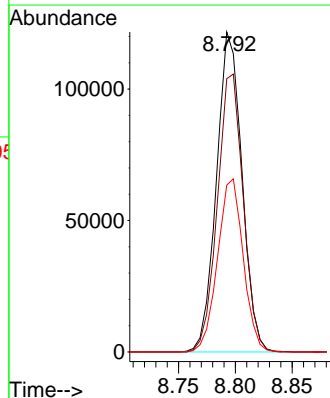
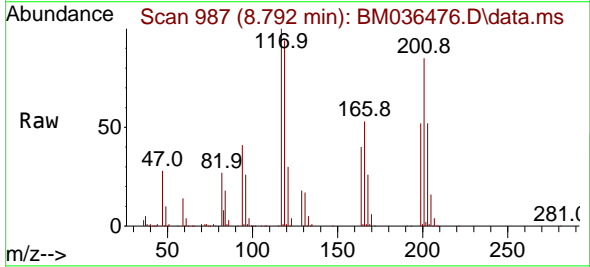


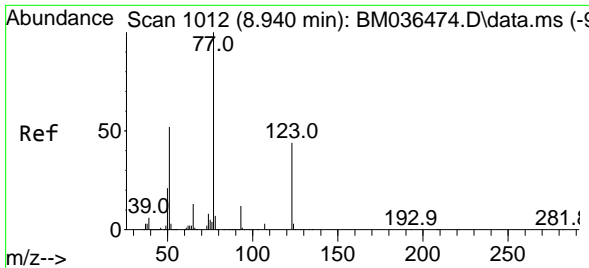
Tgt Ion:108 Resp: 494103
 Ion Ratio Lower Upper
 108 100
 107 112.0 90.3 135.5



#19
 Hexachloroethane
 Concen: 34.333 ng/ul
 RT: 8.792 min Scan# 987
 Delta R.T. -0.000 min
 Lab File: BM036476.D
 Acq: 01 Sep 2022 17:00

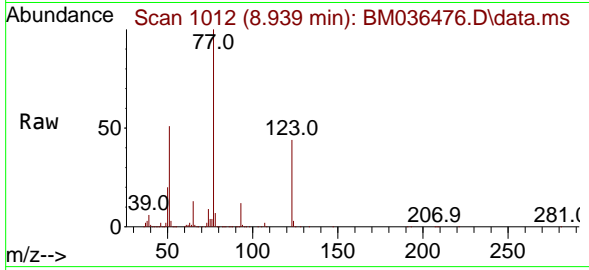
Tgt Ion:117 Resp: 189746
 Ion Ratio Lower Upper
 117 100
 201 85.4 81.8 122.6
 199 52.2 51.6 77.4



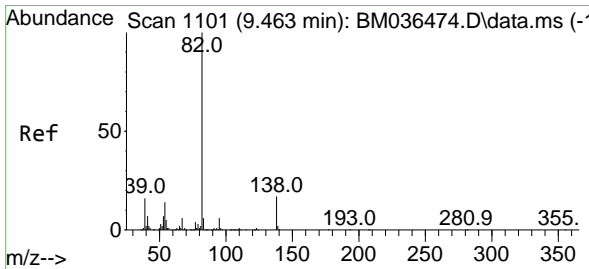
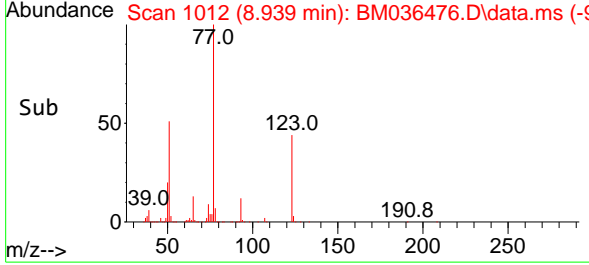
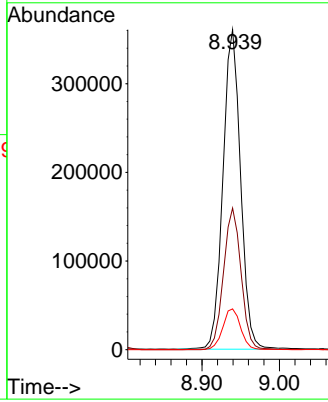


#22
 Nitrobenzene
 Concen: 36.145 ng/uI
 RT: 8.939 min Scan# 1012
 Delta R.T. -0.000 min
 Lab File: BM036476.D
 Acq: 01 Sep 2022 17:00

Instrument : BNA_M
 ClientSampleId : SLCS416

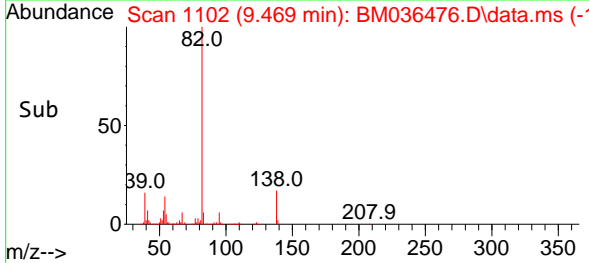
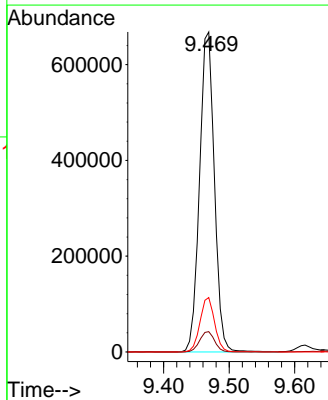
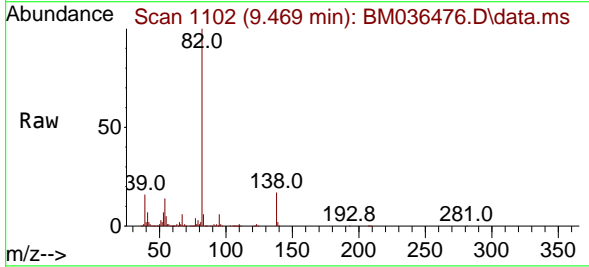


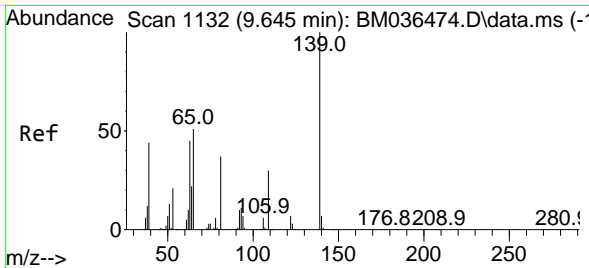
Tgt Ion: 77 Resp: 569499
 Ion Ratio Lower Upper
 77 100
 123 44.3 37.4 56.0
 65 12.8 10.8 16.2



#23
 Isophorone
 Concen: 37.700 ng/uI
 RT: 9.469 min Scan# 1102
 Delta R.T. 0.006 min
 Lab File: BM036476.D
 Acq: 01 Sep 2022 17:00

Tgt Ion: 82 Resp: 1054853
 Ion Ratio Lower Upper
 82 100
 95 6.3 5.5 8.3
 138 17.0 15.3 22.9



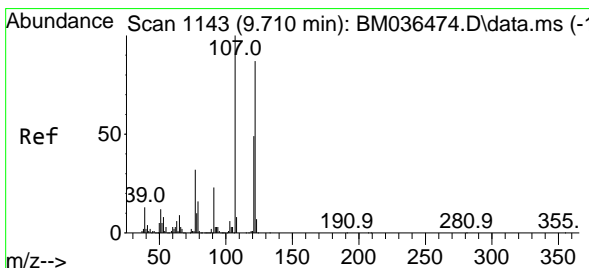
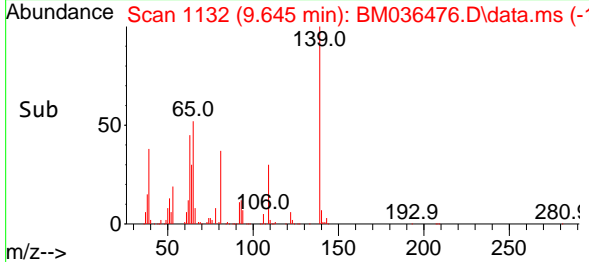
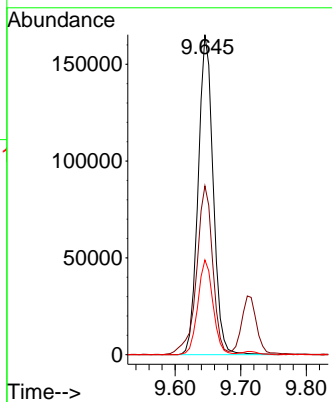
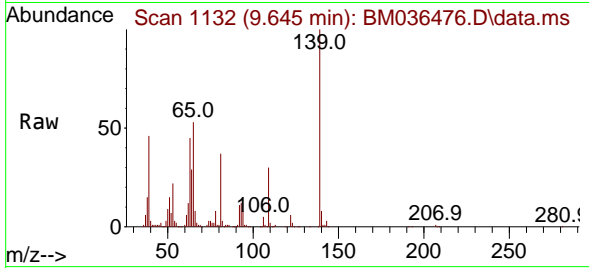


#25
 2-Nitrophenol
 Concen: 35.180 ng/ul
 RT: 9.645 min Scan# 1132
 Delta R.T. -0.000 min
 Lab File: BM036476.D
 Acq: 01 Sep 2022 17:00

Instrument :
 BNA_M
 ClientSampleId :
 SLCS416

Tgt Ion:139 Resp: 264367

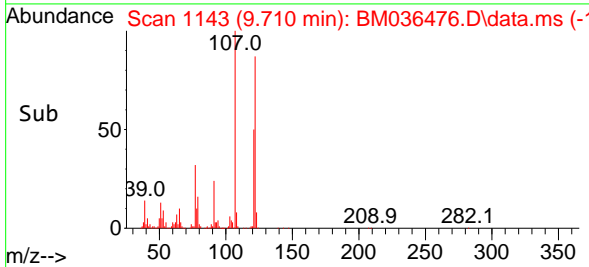
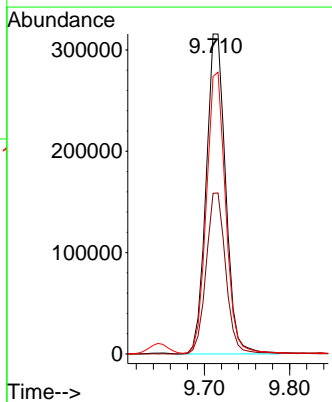
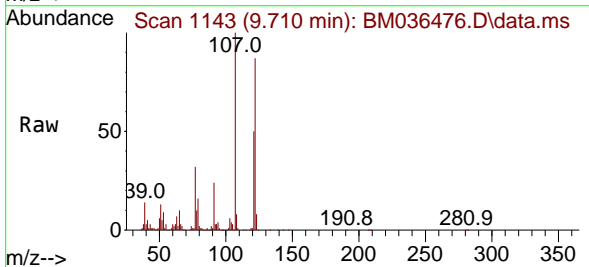
Ion	Ratio	Lower	Upper
139	100		
65	52.8	39.8	59.6
109	29.6	22.2	33.4

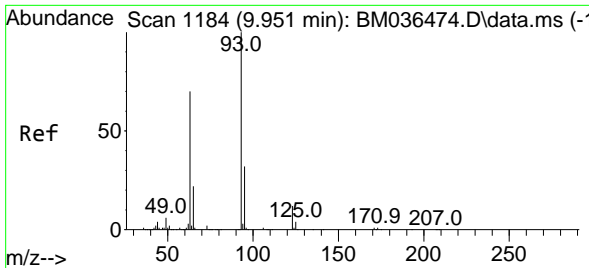


#26
 2,4-Dimethylphenol
 Concen: 33.423 ng/ul
 RT: 9.710 min Scan# 1143
 Delta R.T. -0.000 min
 Lab File: BM036476.D
 Acq: 01 Sep 2022 17:00

Tgt Ion:107 Resp: 502301

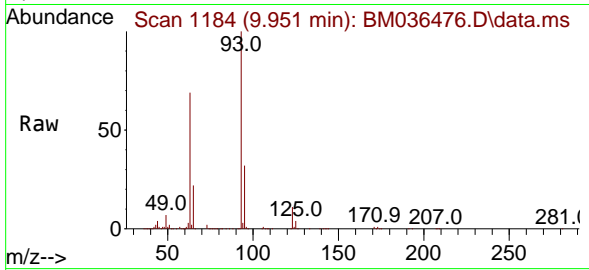
Ion	Ratio	Lower	Upper
107	100		
121	50.2	42.7	64.1
122	86.7	71.5	107.3





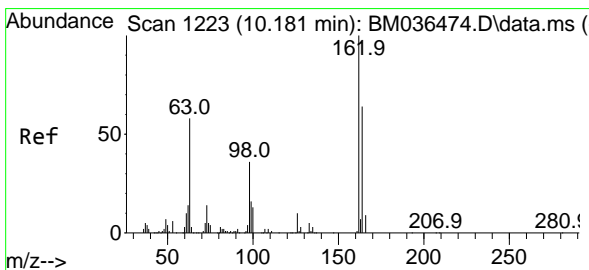
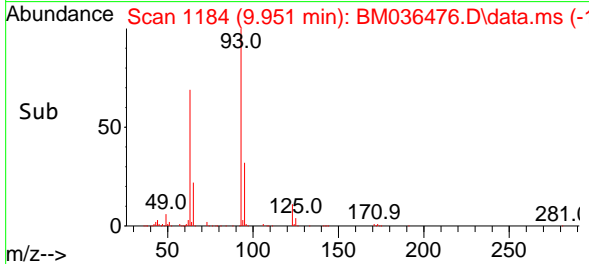
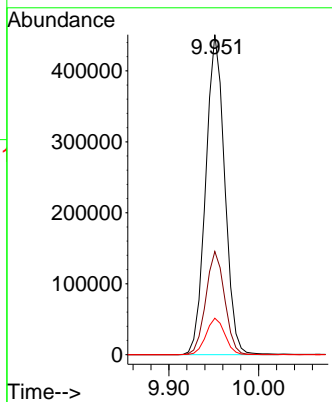
#27
 Bis(2-Chloroethoxy)methane
 Concen: 36.337 ng/ul
 RT: 9.951 min Scan# 1184
 Delta R.T. -0.000 min
 Lab File: BM036476.D
 Acq: 01 Sep 2022 17:00

Instrument : BNA_M
 ClientSampleId : SLCS416



Tgt Ion: 93 Resp: 661892

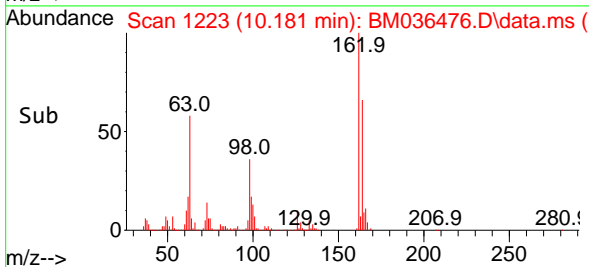
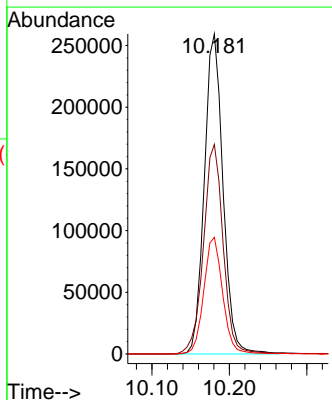
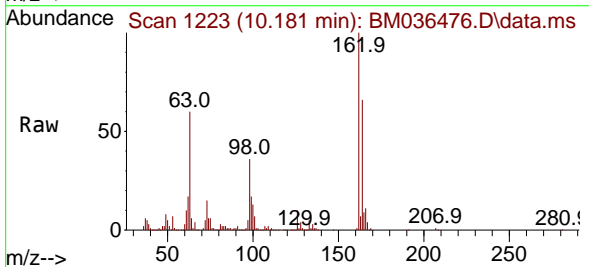
Ion	Ratio	Lower	Upper
93	100		
95	32.3	26.1	39.1
123	11.4	9.4	14.0

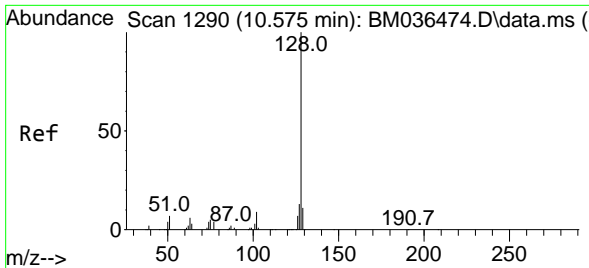


#29
 2,4-Dichlorophenol
 Concen: 35.287 ng/ul
 RT: 10.181 min Scan# 1223
 Delta R.T. -0.000 min
 Lab File: BM036476.D
 Acq: 01 Sep 2022 17:00

Tgt Ion: 162 Resp: 435109

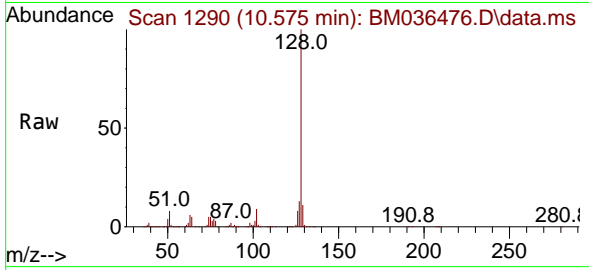
Ion	Ratio	Lower	Upper
162	100		
164	65.5	51.8	77.6
98	36.5	29.5	44.3



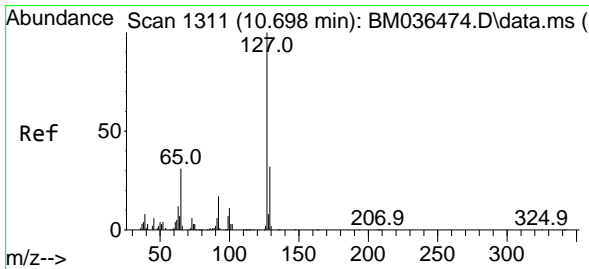
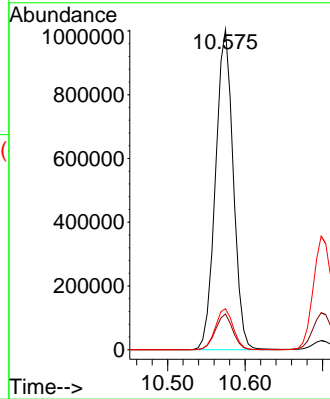
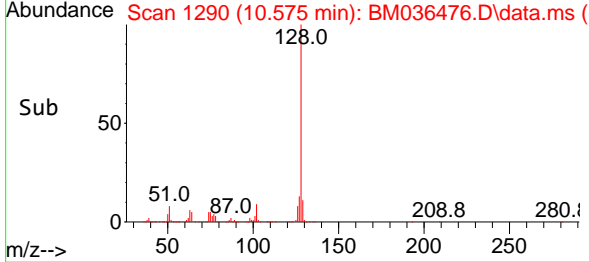


#30
 Naphthalene
 Concen: 34.564 ng/uI
 RT: 10.575 min Scan# 11
 Delta R.T. -0.000 min
 Lab File: BM036476.D
 Acq: 01 Sep 2022 17:00

Instrument :
 BNA_M
 ClientSampleId :
 SLCS416

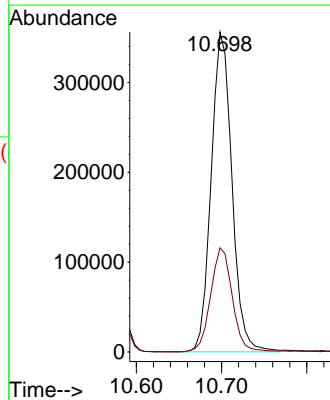
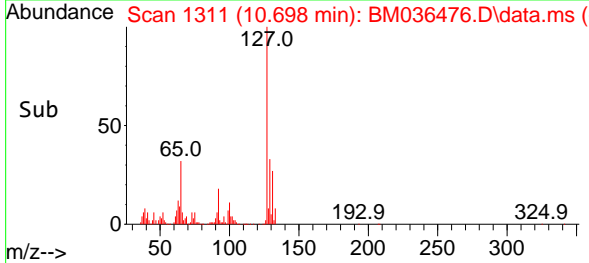
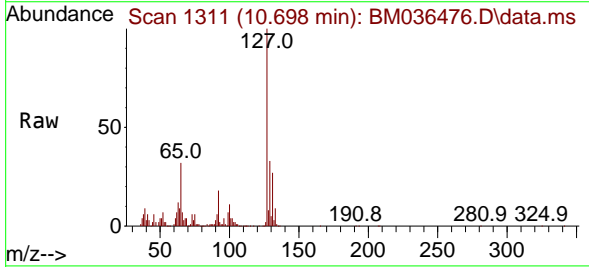


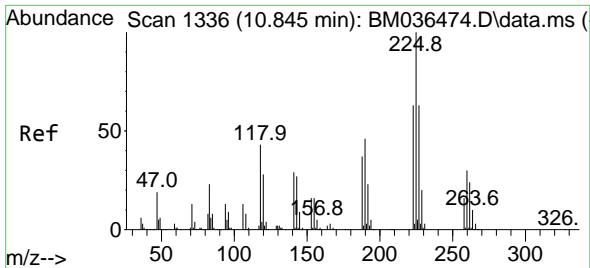
Tgt Ion:128 Resp: 1591057
 Ion Ratio Lower Upper
 128 100
 129 11.2 8.8 13.2
 127 12.8 10.6 16.0



#32
 4-Chloroaniline
 Concen: 31.667 ng/uI
 RT: 10.698 min Scan# 1311
 Delta R.T. -0.000 min
 Lab File: BM036476.D
 Acq: 01 Sep 2022 17:00

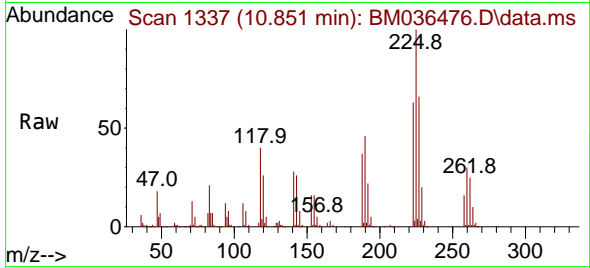
Tgt Ion:127 Resp: 601796
 Ion Ratio Lower Upper
 127 100
 129 32.5 25.3 37.9



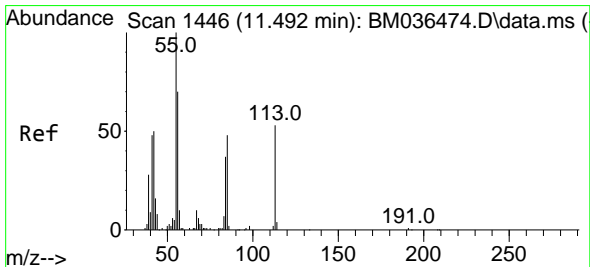
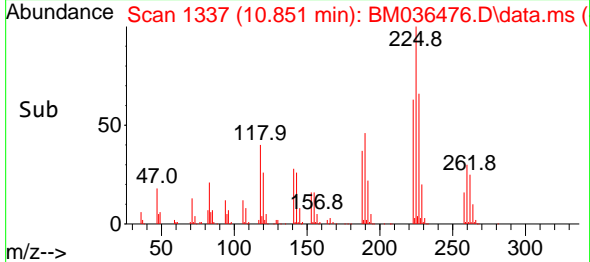
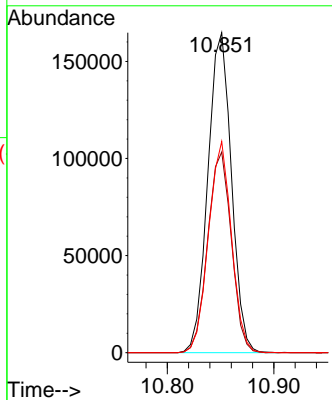


#33
 Hexachlorobutadiene
 Concen: 32.682 ng/u1
 RT: 10.851 min Scan# 11
 Delta R.T. 0.006 min
 Lab File: BM036476.D
 Acq: 01 Sep 2022 17:00

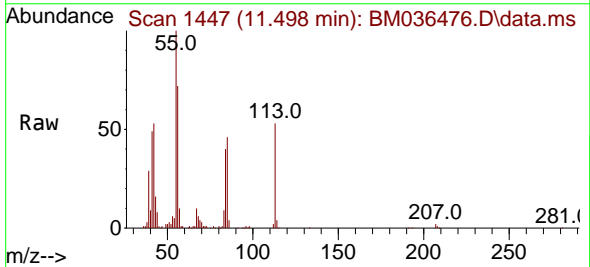
Instrument :
 BNA_M
 ClientSampleId :
 SLCS416



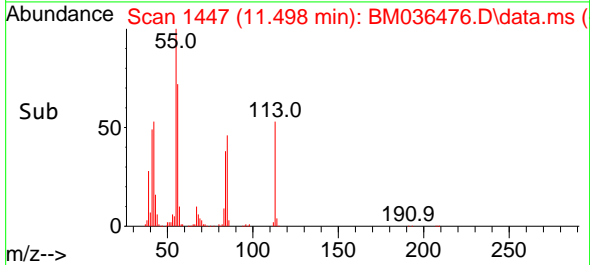
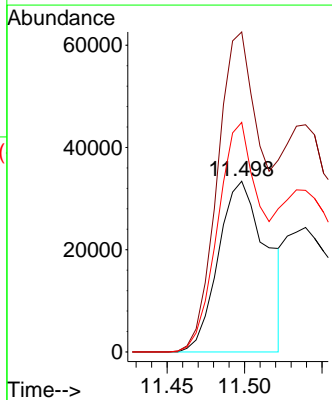
Tgt Ion:225 Resp: 253175
 Ion Ratio Lower Upper
 225 100
 223 62.7 50.0 75.0
 227 66.0 49.9 74.9

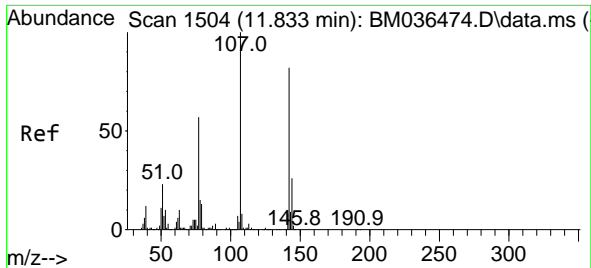


#34
 Caprolactam
 Concen: 19.589 ng/u1
 RT: 11.498 min Scan# 1447
 Delta R.T. 0.006 min
 Lab File: BM036476.D
 Acq: 01 Sep 2022 17:00



Tgt Ion:113 Resp: 72374
 Ion Ratio Lower Upper
 113 100
 55 187.5 150.2 225.4
 56 134.5 102.1 153.1

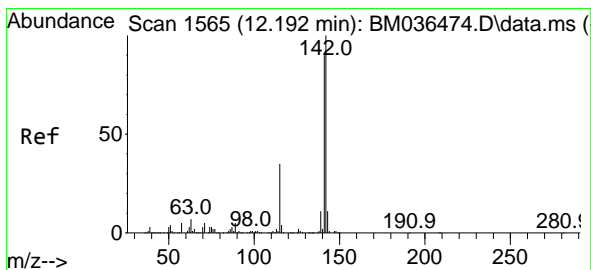
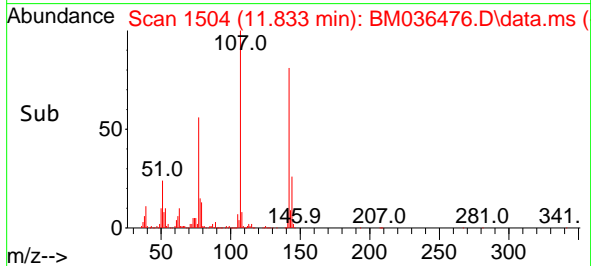
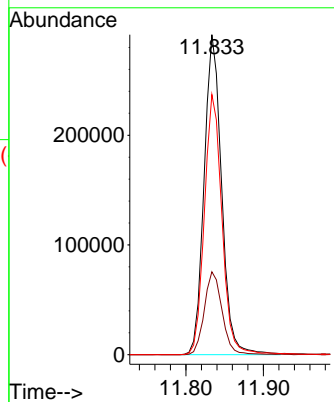
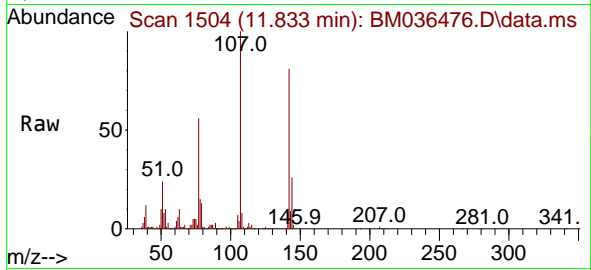




#35
 4-Chloro-3-methylphenol
 Concen: 36.733 ng/ul
 RT: 11.833 min Scan# 11
 Delta R.T. -0.000 min
 Lab File: BM036476.D
 Acq: 01 Sep 2022 17:00

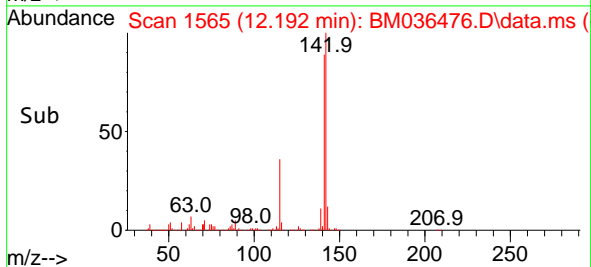
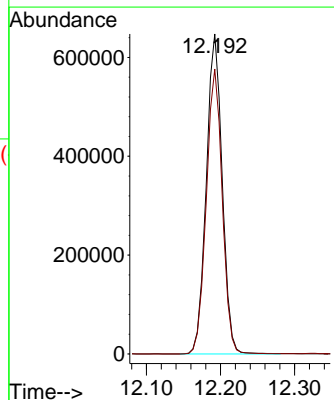
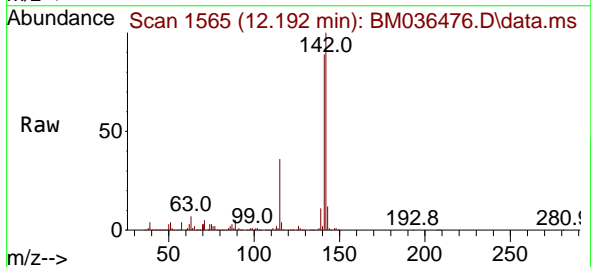
Instrument :
 BNA_M
 ClientSampleId :
 SLCS416

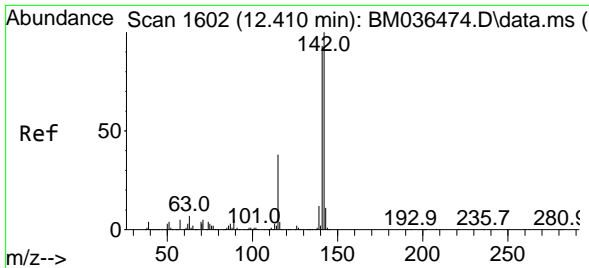
Tgt Ion:107 Resp: 457970
 Ion Ratio Lower Upper
 107 100
 144 25.9 20.3 30.5
 142 81.3 64.4 96.6



#36
 2-Methylnaphthalene
 Concen: 33.388 ng/ul
 RT: 12.192 min Scan# 1565
 Delta R.T. -0.000 min
 Lab File: BM036476.D
 Acq: 01 Sep 2022 17:00

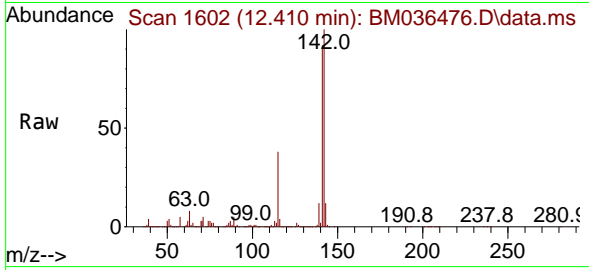
Tgt Ion:142 Resp: 964311
 Ion Ratio Lower Upper
 142 100
 141 89.1 70.7 106.1



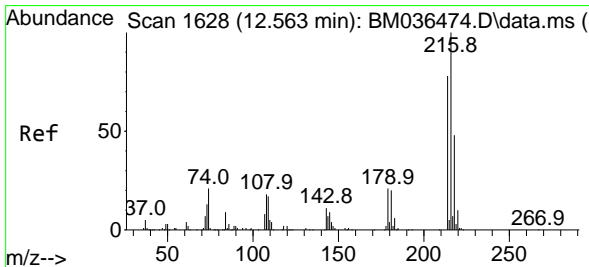
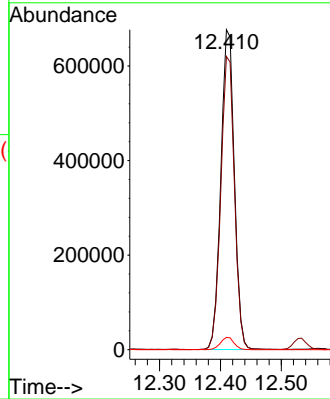
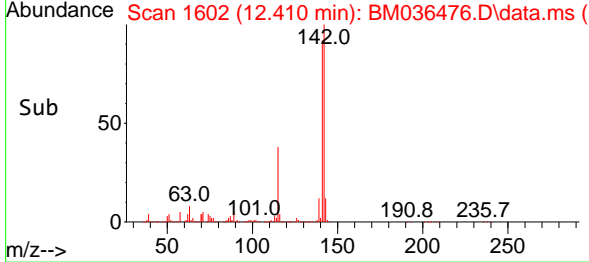


#37
 1-Methylnaphthalene
 Concen: 35.831 ng/ul
 RT: 12.410 min Scan# 1602
 Delta R.T. -0.000 min
 Lab File: BM036476.D
 Acq: 01 Sep 2022 17:00

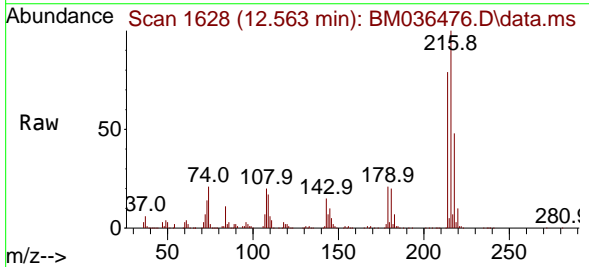
Instrument :
 BNA_M
 ClientSampleId :
 SLCS416



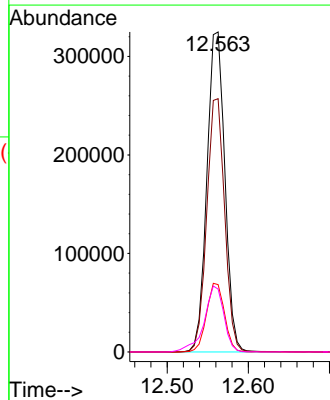
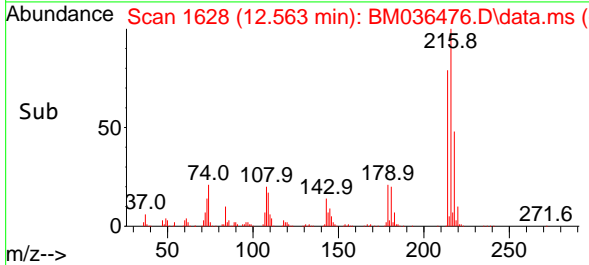
Tgt Ion:142 Resp: 1042196
 Ion Ratio Lower Upper
 142 100
 141 91.6 75.2 112.8
 116 3.9 2.6 3.8#

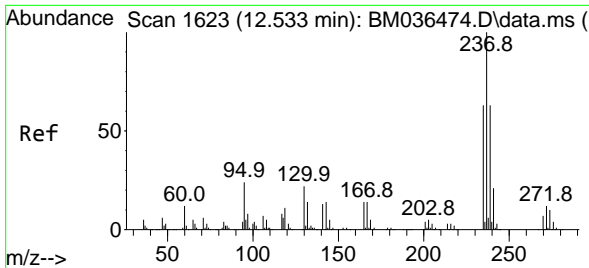


#39
 1,2,4,5-Tetrachlorobenzene
 Concen: 32.059 ng/ul
 RT: 12.563 min Scan# 1628
 Delta R.T. -0.000 min
 Lab File: BM036476.D
 Acq: 01 Sep 2022 17:00



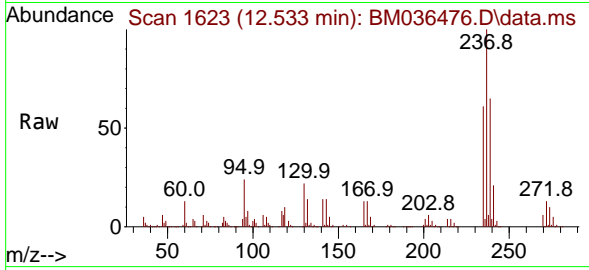
Tgt Ion:216 Resp: 498556
 Ion Ratio Lower Upper
 216 100
 214 79.2 62.4 93.6
 179 21.1 17.3 25.9
 108 19.7 14.0 21.0



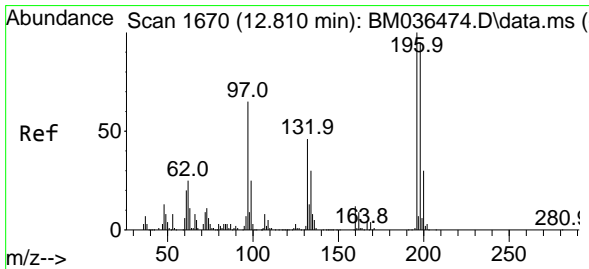
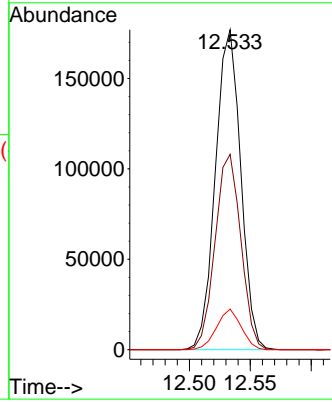
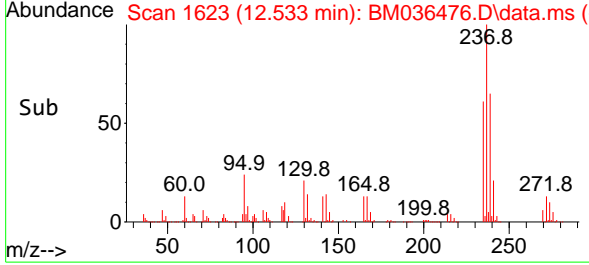


#40
 Hexachlorocyclopentadiene
 Concen: 27.796 ng/ul
 RT: 12.533 min Scan# 1623
 Delta R.T. -0.000 min
 Lab File: BM036476.D
 Acq: 01 Sep 2022 17:00

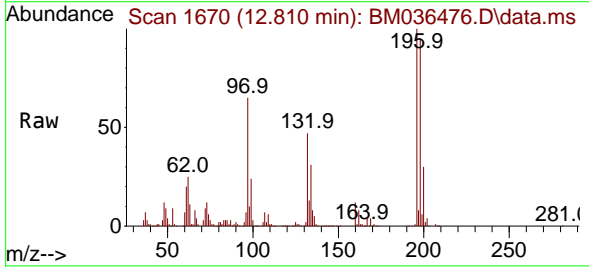
Instrument :
 BNA_M
 ClientSampleId :
 SLCS416



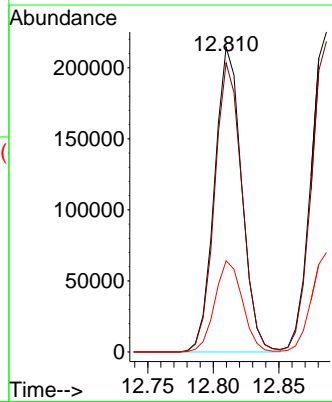
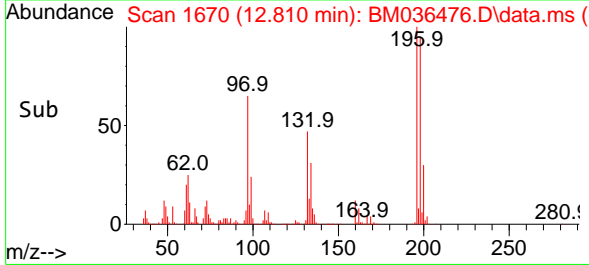
Tgt Ion:237 Resp: 256439
 Ion Ratio Lower Upper
 237 100
 235 61.1 48.4 72.6
 272 12.7 11.6 17.4

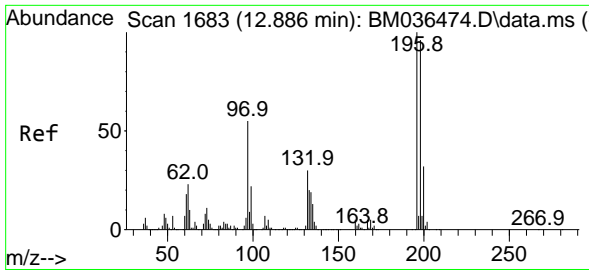


#41
 2,4,6-Trichlorophenol
 Concen: 31.636 ng/ul
 RT: 12.810 min Scan# 1670
 Delta R.T. -0.000 min
 Lab File: BM036476.D
 Acq: 01 Sep 2022 17:00



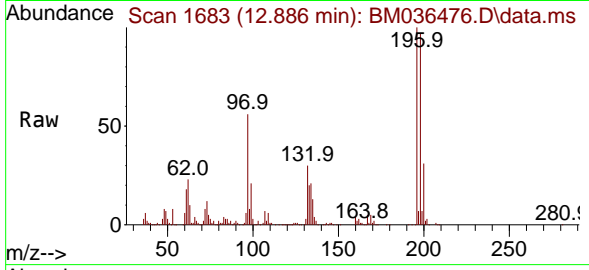
Tgt Ion:196 Resp: 309577
 Ion Ratio Lower Upper
 196 100
 198 94.8 77.8 116.6
 200 29.9 25.0 37.6



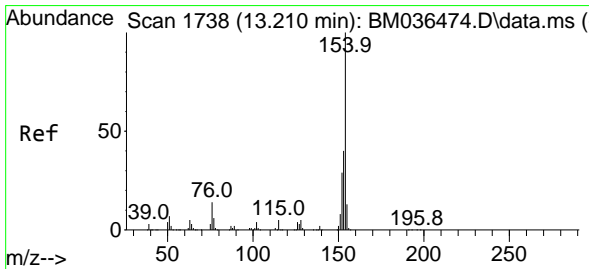
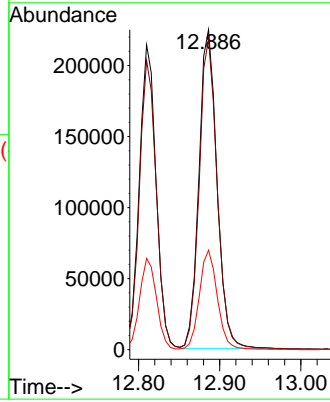
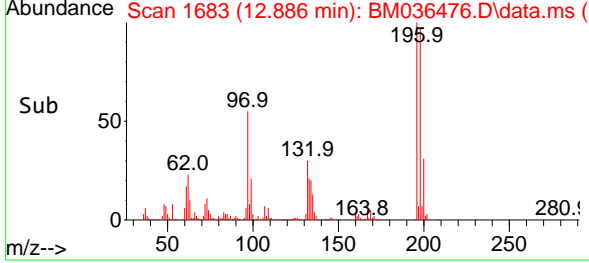


#42
 2,4,5-Trichlorophenol
 Concen: 33.396 ng/uI
 RT: 12.886 min Scan# 1683
 Delta R.T. -0.000 min
 Lab File: BM036476.D
 Acq: 01 Sep 2022 17:00

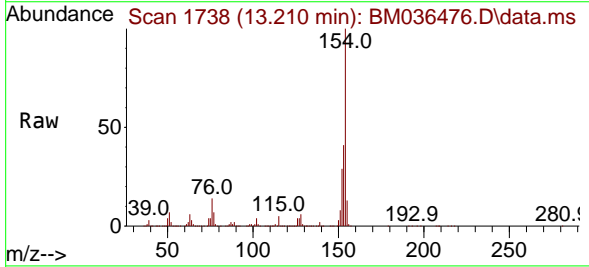
Instrument : BNA_M
 ClientSampleId : SLCS416



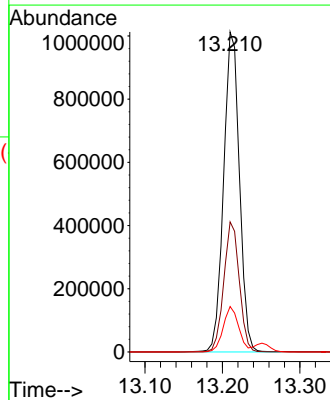
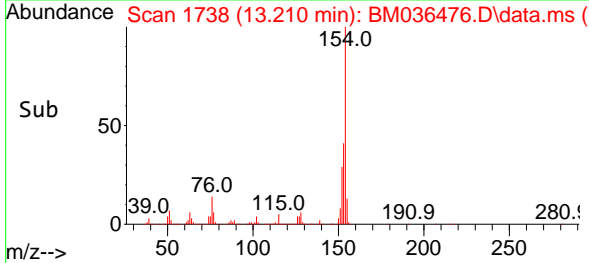
Tgt Ion:196 Resp: 346644
 Ion Ratio Lower Upper
 196 100
 198 97.0 76.8 115.2
 200 31.1 24.9 37.3

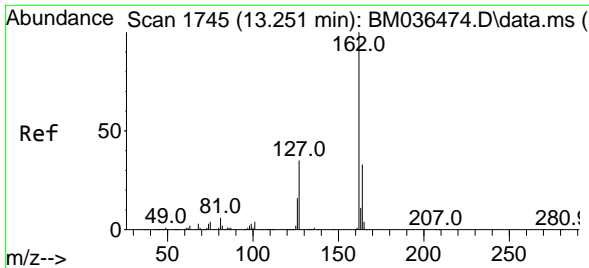


#43
 1,1'-Biphenyl
 Concen: 33.939 ng/uI
 RT: 13.210 min Scan# 1738
 Delta R.T. -0.000 min
 Lab File: BM036476.D
 Acq: 01 Sep 2022 17:00



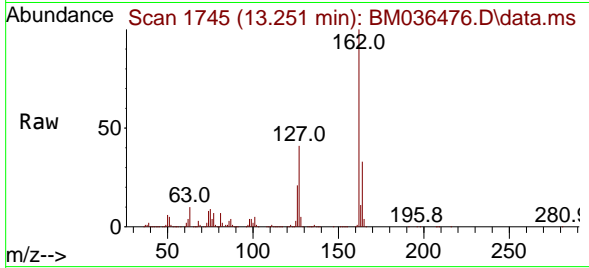
Tgt Ion:154 Resp: 1436167
 Ion Ratio Lower Upper
 154 100
 153 40.7 32.4 48.6
 76 14.2 10.1 15.1





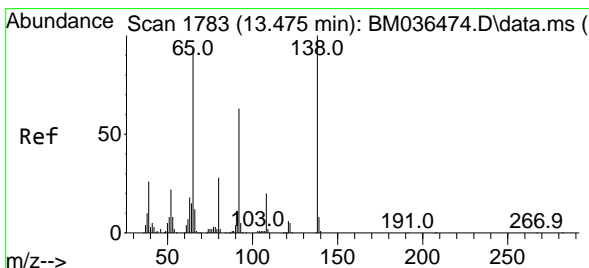
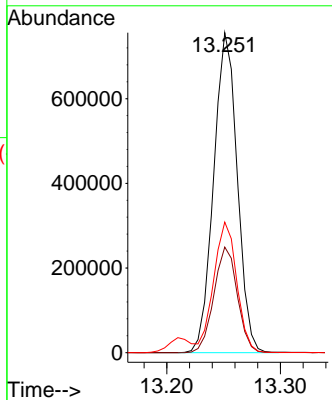
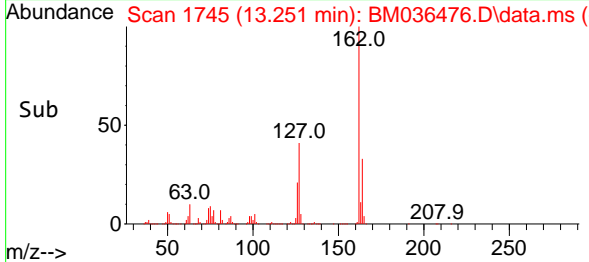
#44
 2-Chloronaphthalene
 Concen: 33.612 ng/uI
 RT: 13.251 min Scan# 1745
 Delta R.T. -0.000 min
 Lab File: BM036476.D
 Acq: 01 Sep 2022 17:00

Instrument : BNA_M
 ClientSampleId : SLCS416

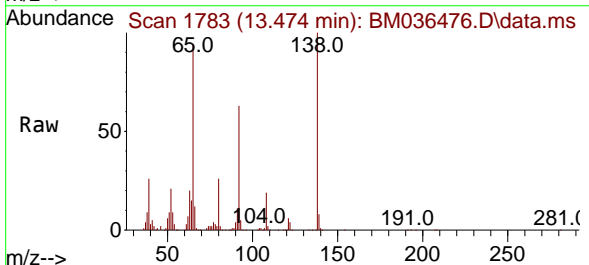


Tgt Ion:162 Resp: 1091424

Ion	Ratio	Lower	Upper
162	100		
164	33.0	25.4	38.0
127	40.8	31.6	47.4

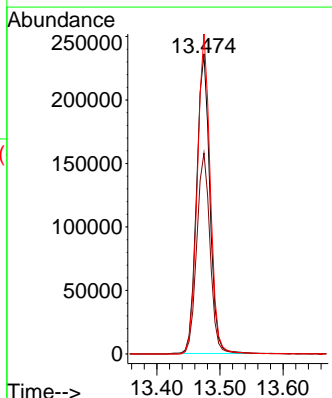
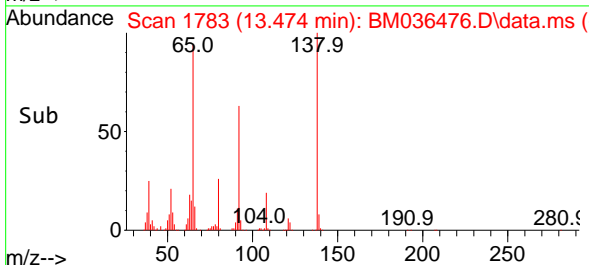


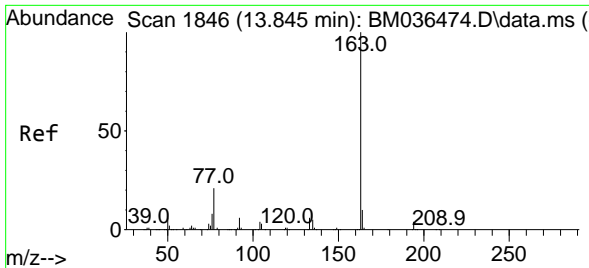
#45
 2-Nitroaniline
 Concen: 38.986 ng/uI
 RT: 13.474 min Scan# 1783
 Delta R.T. -0.000 min
 Lab File: BM036476.D
 Acq: 01 Sep 2022 17:00



Tgt Ion: 65 Resp: 342799

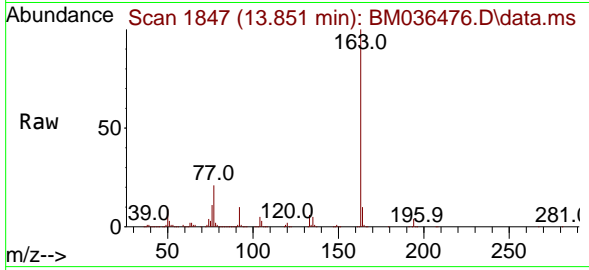
Ion	Ratio	Lower	Upper
65	100		
92	67.0	54.5	81.7
138	106.6	91.2	136.8



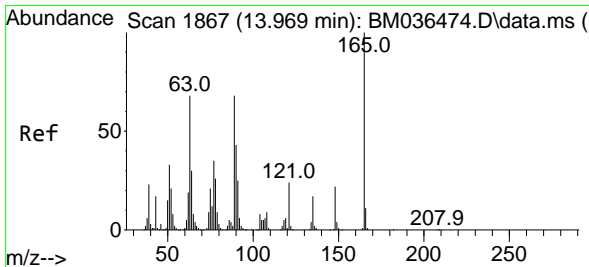
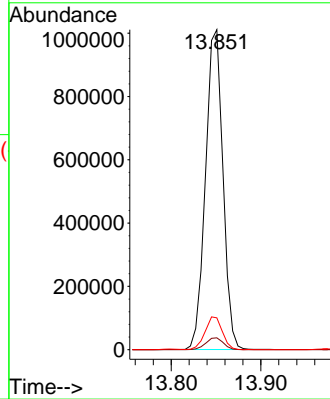
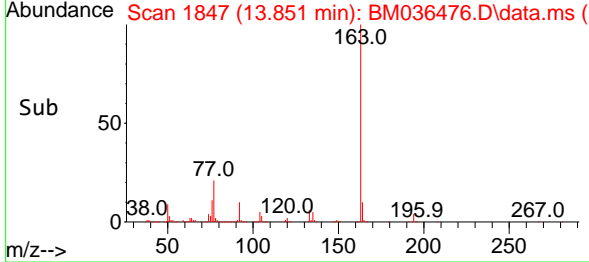


#47
 Dimethylphthalate
 Concen: 37.190 ng/ul
 RT: 13.851 min Scan# 1847
 Delta R.T. 0.006 min
 Lab File: BM036476.D
 Acq: 01 Sep 2022 17:00

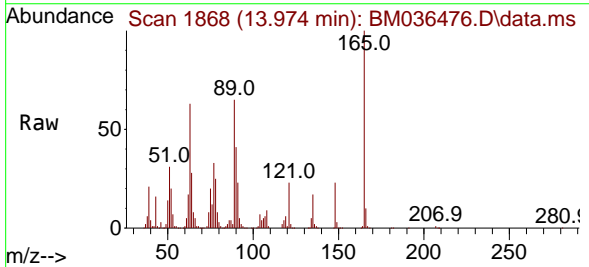
Instrument :
 BNA_M
 ClientSampleId :
 SLCS416



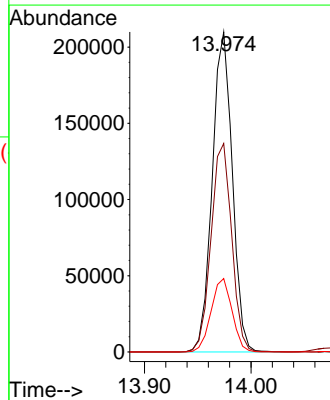
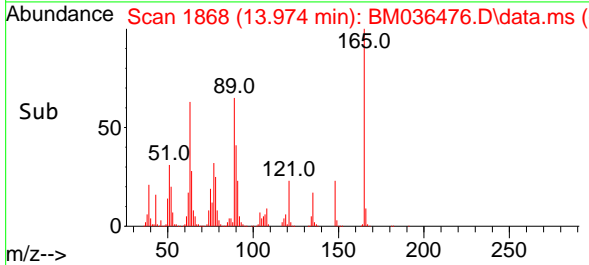
Tgt Ion:163 Resp: 1362605
 Ion Ratio Lower Upper
 163 100
 194 3.7 3.2 4.8
 164 9.9 7.9 11.9

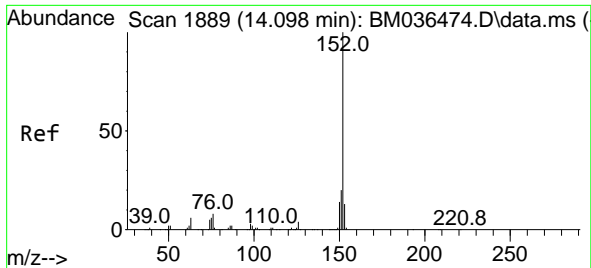


#48
 2,6-Dinitrotoluene
 Concen: 39.662 ng/ul
 RT: 13.974 min Scan# 1868
 Delta R.T. 0.006 min
 Lab File: BM036476.D
 Acq: 01 Sep 2022 17:00



Tgt Ion:165 Resp: 274182
 Ion Ratio Lower Upper
 165 100
 89 65.2 42.5 63.7#
 121 23.0 17.2 25.8



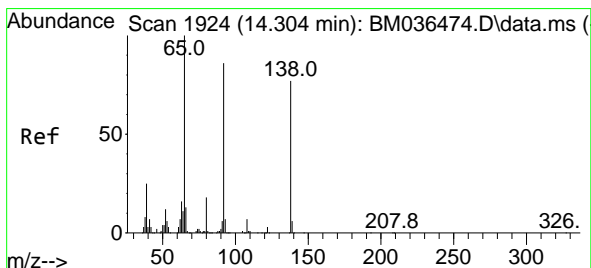
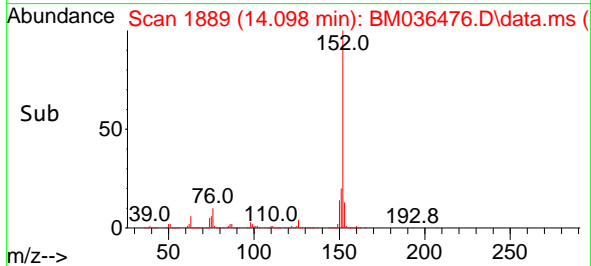
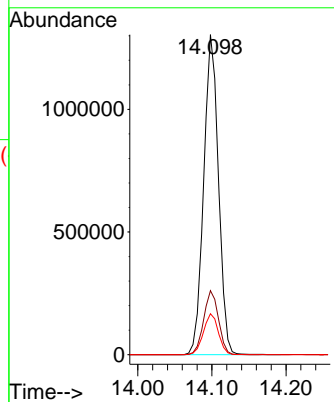
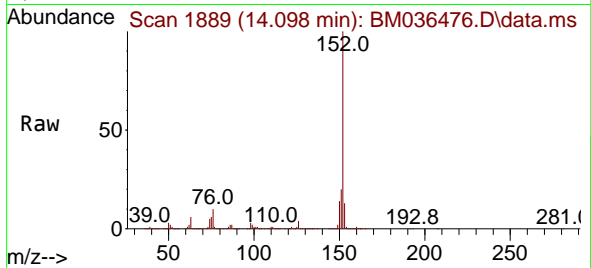


#50
 Acenaphthylene
 Concen: 34.448 ng/ul
 RT: 14.098 min Scan# 1889
 Delta R.T. -0.000 min
 Lab File: BM036476.D
 Acq: 01 Sep 2022 17:00

Instrument : BNA_M
 ClientSampleId : SLCS416

Tgt Ion:152 Resp: 1803469

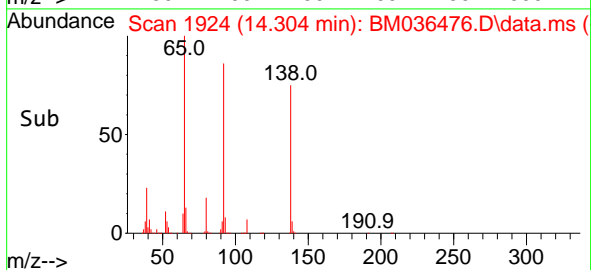
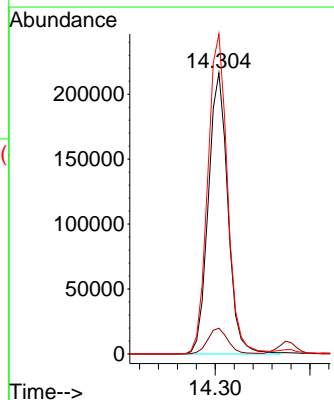
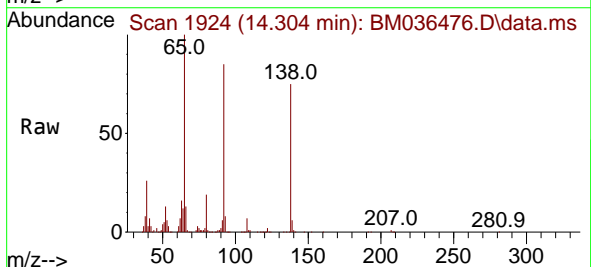
Ion	Ratio	Lower	Upper
152	100		
151	20.0	16.1	24.1
153	12.8	10.6	15.8

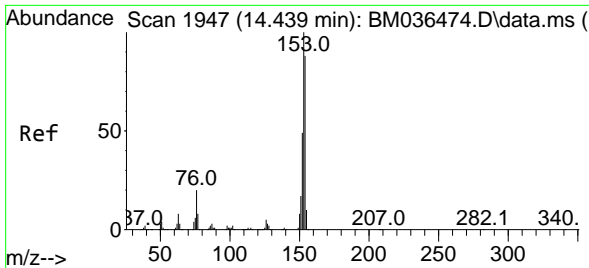


#51
 3-Nitroaniline
 Concen: 40.904 ng/ul
 RT: 14.304 min Scan# 1924
 Delta R.T. -0.000 min
 Lab File: BM036476.D
 Acq: 01 Sep 2022 17:00

Tgt Ion:138 Resp: 309241

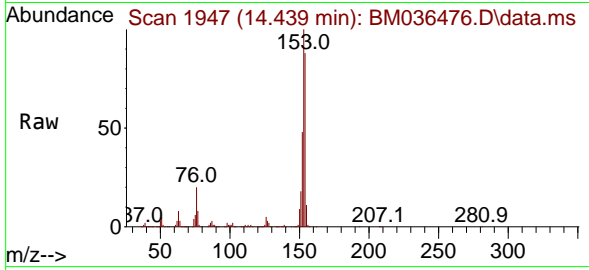
Ion	Ratio	Lower	Upper
138	100		
108	9.1	8.1	12.1
92	113.8	90.4	135.6



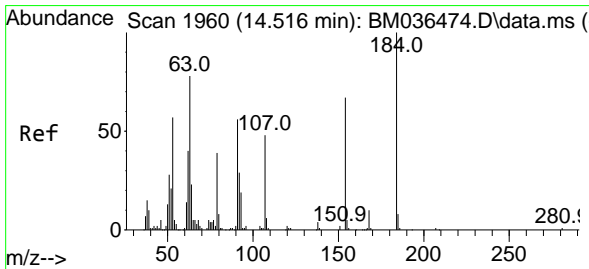
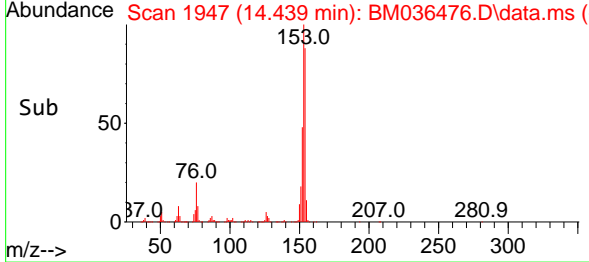
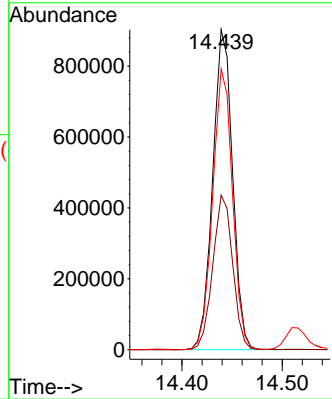


#52
 Acenaphthene
 Concen: 36.367 ng/uI
 RT: 14.439 min Scan# 1947
 Delta R.T. -0.000 min
 Lab File: BM036476.D
 Acq: 01 Sep 2022 17:00

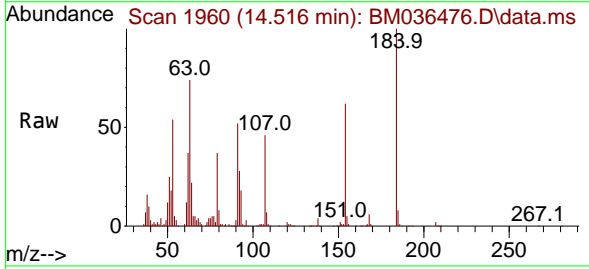
Instrument : BNA_M
 ClientSampleId : SLCS416



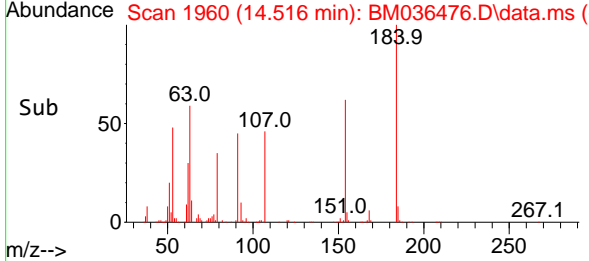
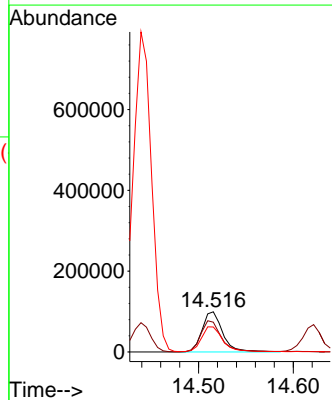
Tgt Ion:153 Resp: 1240966
 Ion Ratio Lower Upper
 153 100
 152 48.2 37.1 55.7
 154 87.7 71.3 106.9

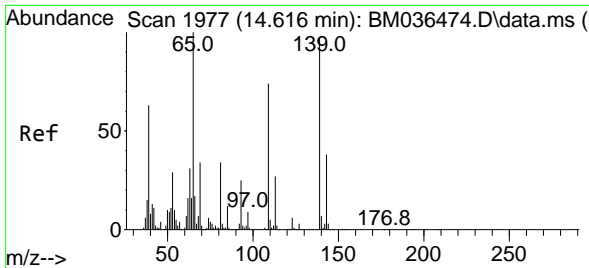


#53
 2,4-Dinitrophenol
 Concen: 39.988 ng/uI
 RT: 14.516 min Scan# 1960
 Delta R.T. -0.000 min
 Lab File: BM036476.D
 Acq: 01 Sep 2022 17:00



Tgt Ion:184 Resp: 150655
 Ion Ratio Lower Upper
 184 100
 63 74.1 54.2 81.4
 154 62.0 49.3 73.9



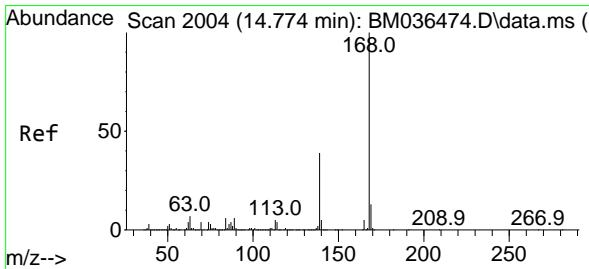
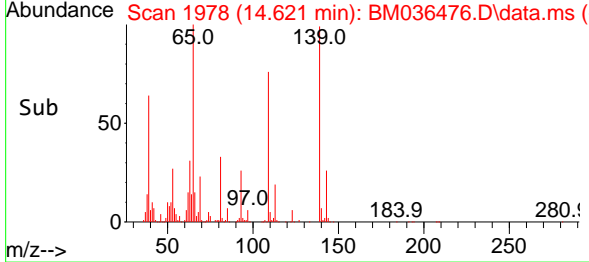
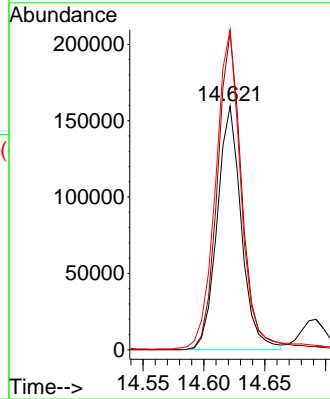
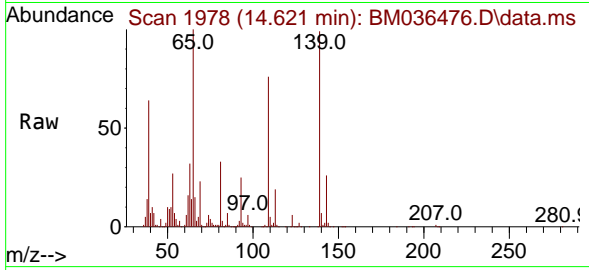


#55
 4-Nitrophenol
 Concen: 41.249 ng/uI
 RT: 14.621 min Scan# 1977
 Delta R.T. 0.006 min
 Lab File: BM036476.D
 Acq: 01 Sep 2022 17:00

Instrument : BNA_M
 ClientSampleId : SLCS416

Tgt Ion:109 Resp: 219812

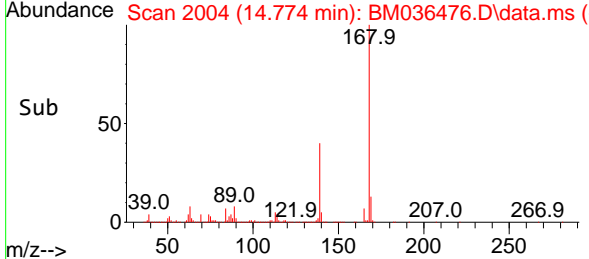
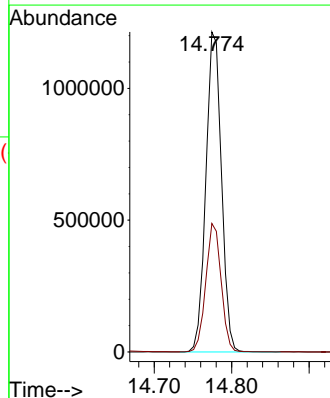
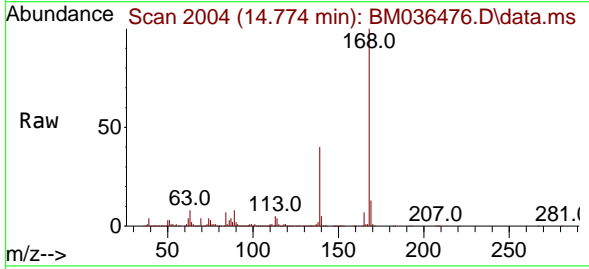
Ion	Ratio	Lower	Upper
109	100		
139	130.3	124.9	187.3
65	131.4	122.2	183.4

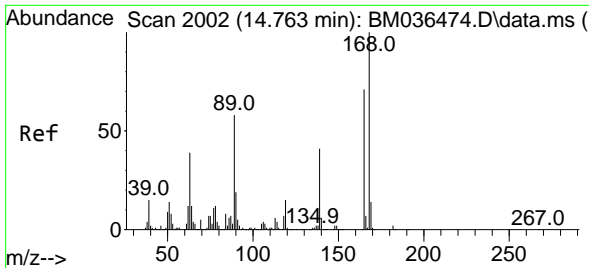


#56
 Dibenzofuran
 Concen: 35.750 ng/uI
 RT: 14.774 min Scan# 2004
 Delta R.T. -0.000 min
 Lab File: BM036476.D
 Acq: 01 Sep 2022 17:00

Tgt Ion:168 Resp: 1692709

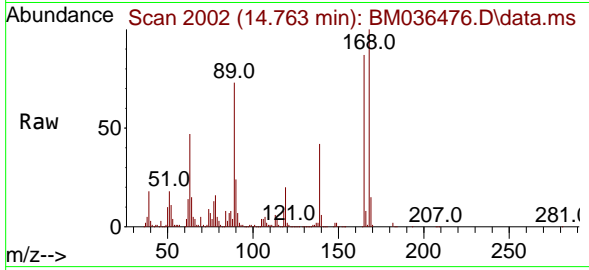
Ion	Ratio	Lower	Upper
168	100		
139	40.1	30.1	45.1



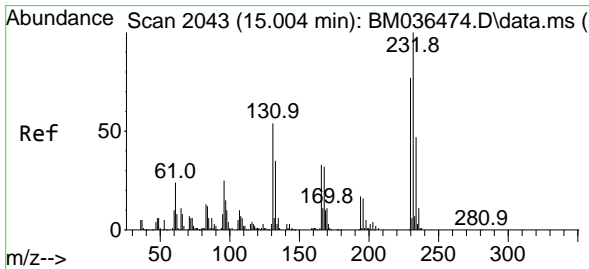
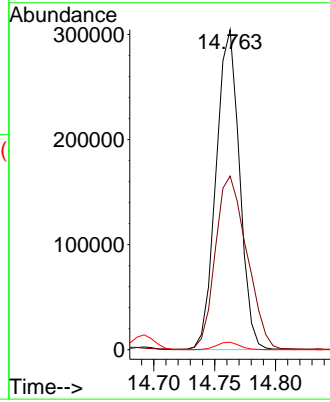
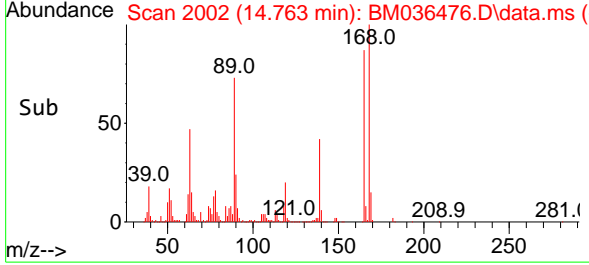


#57
 2,4-Dinitrotoluene
 Concen: 41.681 ng/ul
 RT: 14.763 min Scan# 2002
 Delta R.T. -0.000 min
 Lab File: BM036476.D
 Acq: 01 Sep 2022 17:00

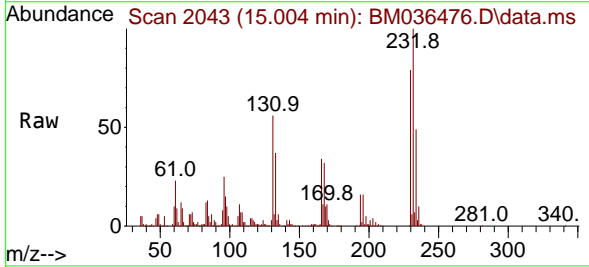
Instrument :
 BNA_M
 ClientSampleId :
 SLCS416



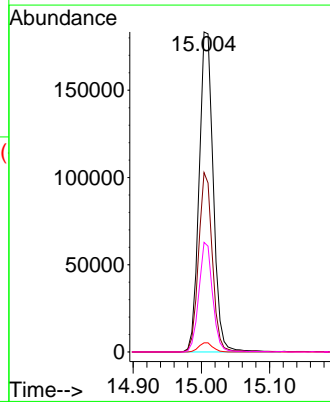
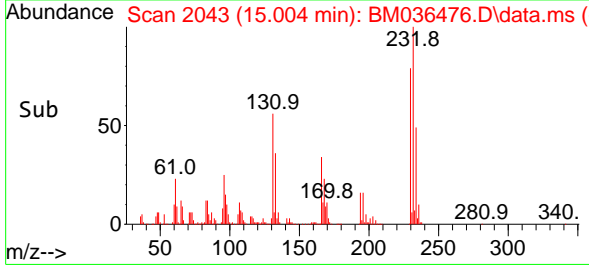
Tgt Ion:165 Resp: 408648
 Ion Ratio Lower Upper
 165 100
 63 54.2 35.9 53.9#
 182 2.3 2.5 3.7#

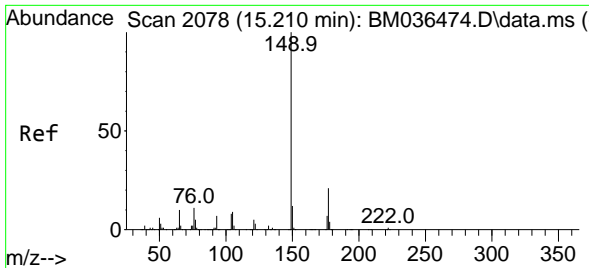


#58
 2,3,4,6-Tetrachlorophenol
 Concen: 33.443 ng/ul
 RT: 15.004 min Scan# 2043
 Delta R.T. -0.000 min
 Lab File: BM036476.D
 Acq: 01 Sep 2022 17:00



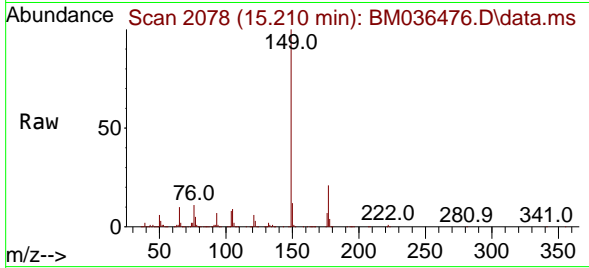
Tgt Ion:232 Resp: 263565
 Ion Ratio Lower Upper
 232 100
 131 56.1 36.7 55.1#
 130 2.8 1.7 2.5#
 166 34.3 24.4 36.6



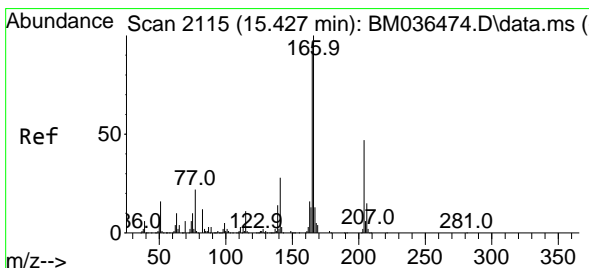
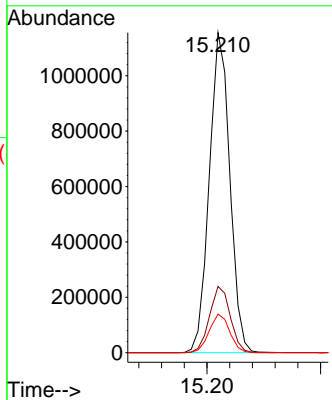
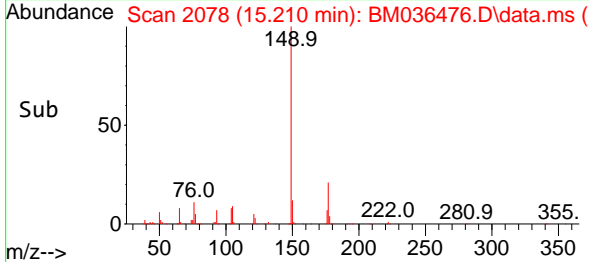


#59
 Diethylphthalate
 Concen: 40.212 ng/uI
 RT: 15.210 min Scan# 2078
 Delta R.T. -0.000 min
 Lab File: BM036476.D
 Acq: 01 Sep 2022 17:00

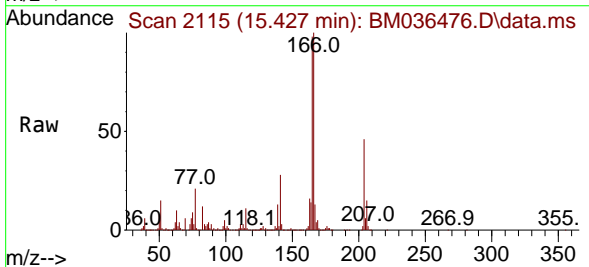
Instrument :
 BNA_M
 ClientSampleId :
 SLCS416



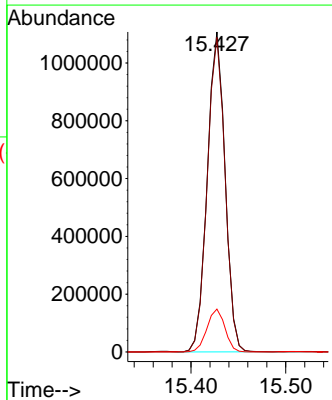
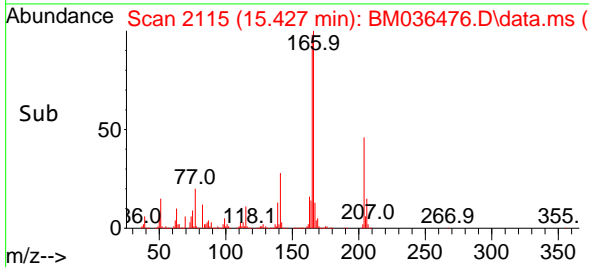
Tgt Ion:149 Resp: 1452348
 Ion Ratio Lower Upper
 149 100
 177 20.7 16.8 25.2
 150 12.1 10.2 15.4

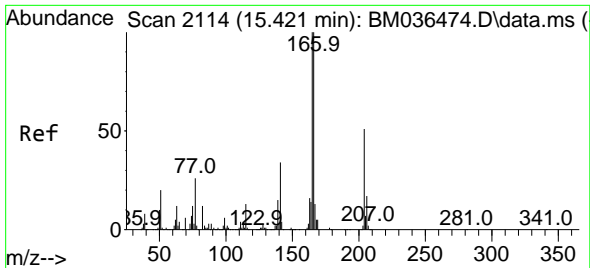


#61
 Fluorene
 Concen: 38.571 ng/uI
 RT: 15.427 min Scan# 2115
 Delta R.T. -0.000 min
 Lab File: BM036476.D
 Acq: 01 Sep 2022 17:00



Tgt Ion:166 Resp: 1448536
 Ion Ratio Lower Upper
 166 100
 165 98.3 77.2 115.8
 167 13.4 11.0 16.4

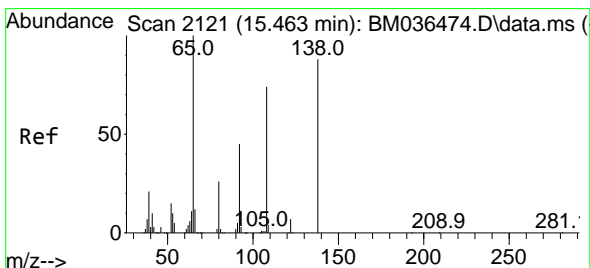
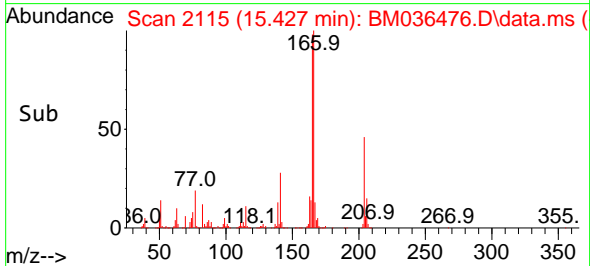
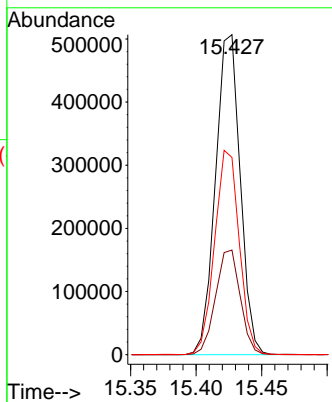
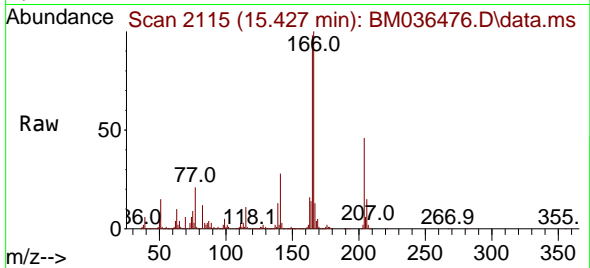




#62
 4-Chlorophenyl-phenylether
 Concen: 37.894 ng/ul
 RT: 15.427 min Scan# 2115
 Delta R.T. 0.006 min
 Lab File: BM036476.D
 Acq: 01 Sep 2022 17:00

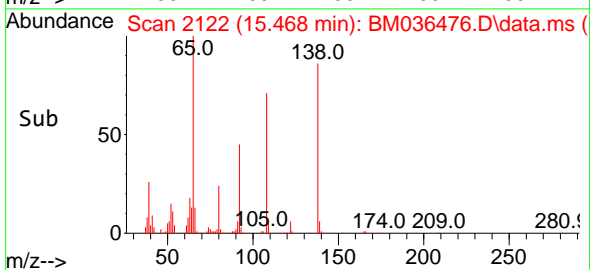
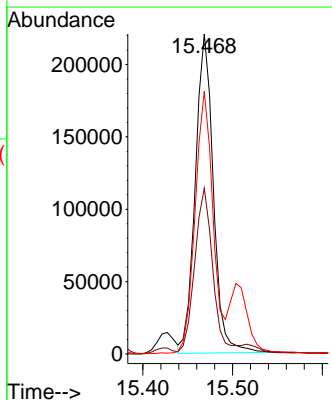
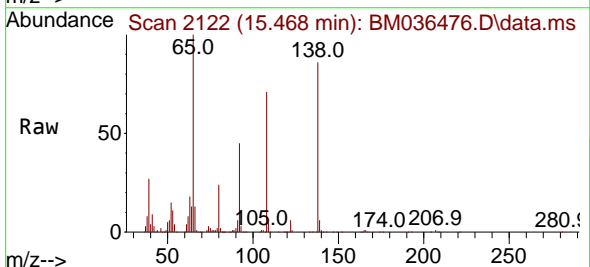
Instrument :
 BNA_M
 ClientSampleId :
 SLCS416

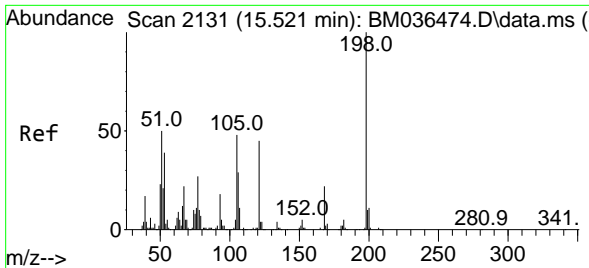
Tgt Ion:204 Resp: 664779
 Ion Ratio Lower Upper
 204 100
 206 32.7 25.9 38.9
 141 61.7 50.6 75.8



#63
 4-Nitroaniline
 Concen: 43.738 ng/ul
 RT: 15.468 min Scan# 2122
 Delta R.T. 0.006 min
 Lab File: BM036476.D
 Acq: 01 Sep 2022 17:00

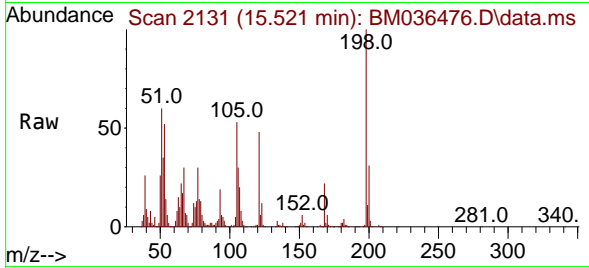
Tgt Ion:138 Resp: 308454
 Ion Ratio Lower Upper
 138 100
 92 51.8 39.2 58.8
 108 82.1 51.6 77.4#



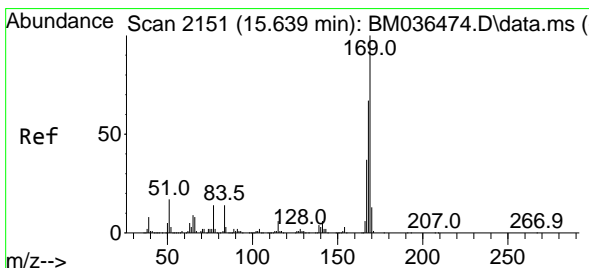
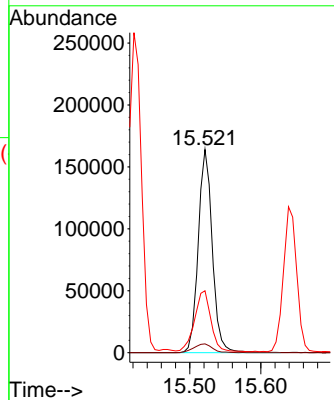
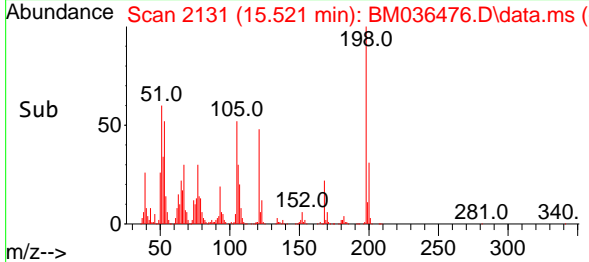


#66
 4,6-Dinitro-2-methylphenol
 Concen: 36.535 ng/ul
 RT: 15.521 min Scan# 2131
 Delta R.T. -0.000 min
 Lab File: BM036476.D
 Acq: 01 Sep 2022 17:00

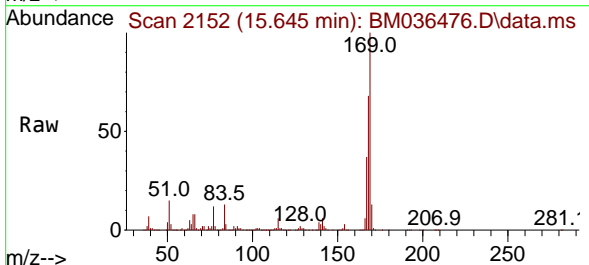
Instrument :
 BNA_M
 ClientSampleId :
 SLCS416



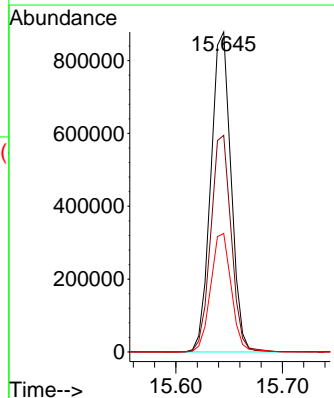
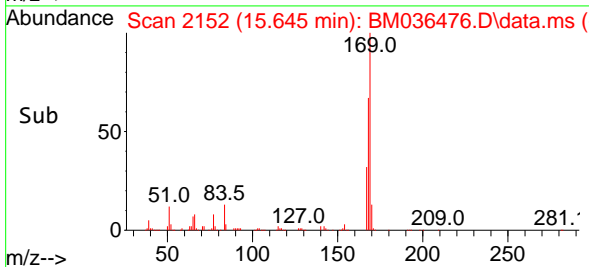
Tgt Ion:198 Resp: 226533
 Ion Ratio Lower Upper
 198 100
 182 4.4 4.2 6.4
 77 30.5 19.9 29.9#

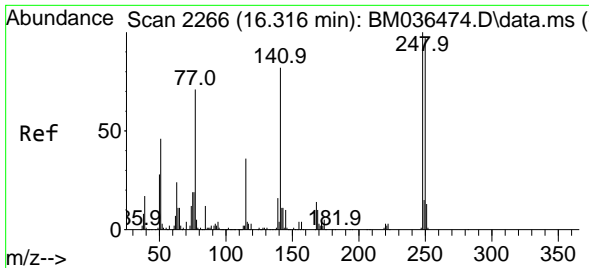


#67
 N-Nitrosodiphenylamine
 Concen: 34.023 ng/ul
 RT: 15.645 min Scan# 2152
 Delta R.T. 0.006 min
 Lab File: BM036476.D
 Acq: 01 Sep 2022 17:00



Tgt Ion:169 Resp: 1160271
 Ion Ratio Lower Upper
 169 100
 168 67.7 53.8 80.6
 167 37.1 28.7 43.1



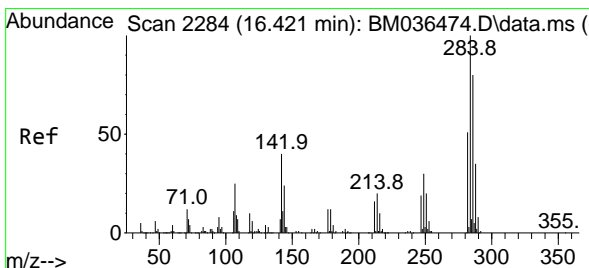
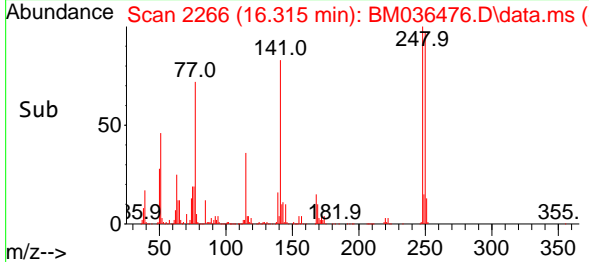
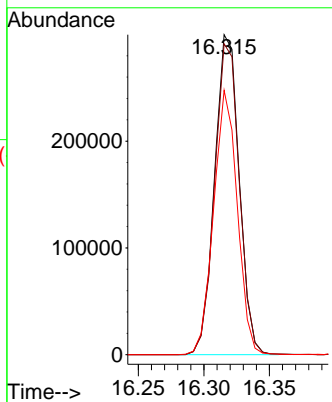
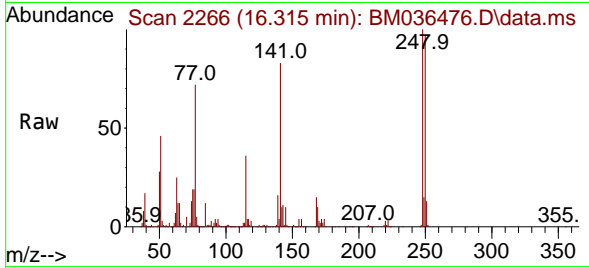


#68
 4-Bromophenyl-phenylether
 Concen: 35.409 ng/ul
 RT: 16.315 min Scan# 21
 Delta R.T. -0.000 min
 Lab File: BM036476.D
 Acq: 01 Sep 2022 17:00

Instrument :
 BNA_M
 ClientSampleId :
 SLCS416

Tgt Ion:248 Resp: 391102

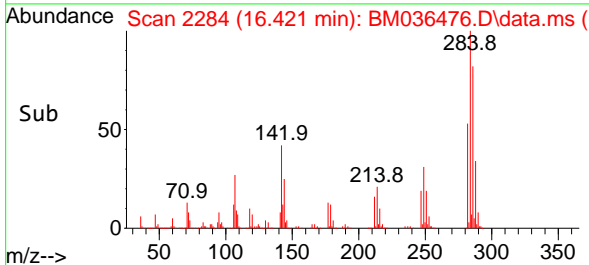
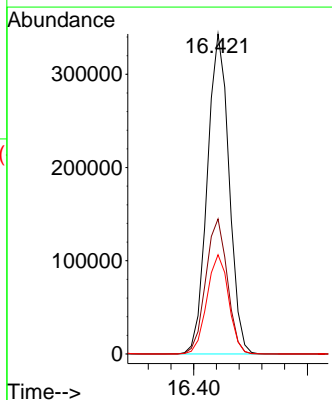
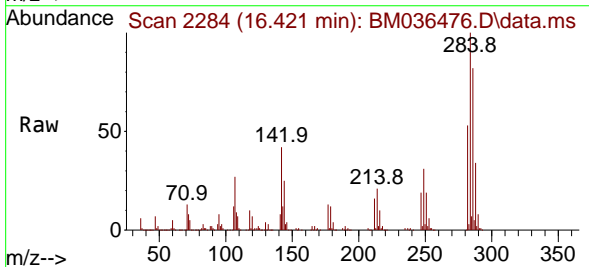
Ion	Ratio	Lower	Upper
248	100		
250	97.1	77.3	115.9
141	82.6	59.8	89.8

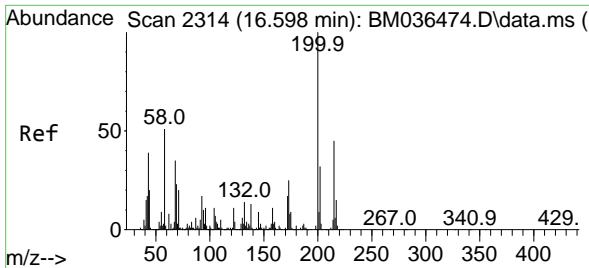


#69
 Hexachlorobenzene
 Concen: 34.042 ng/ul
 RT: 16.421 min Scan# 2284
 Delta R.T. -0.000 min
 Lab File: BM036476.D
 Acq: 01 Sep 2022 17:00

Tgt Ion:284 Resp: 455666

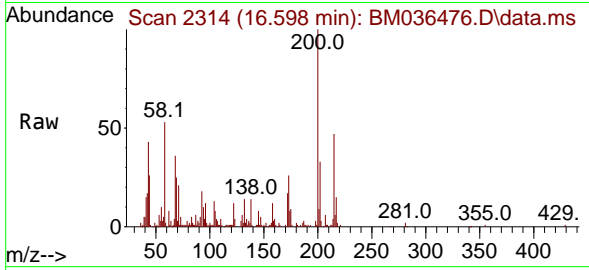
Ion	Ratio	Lower	Upper
284	100		
142	42.2	28.6	42.8
249	31.0	24.6	37.0



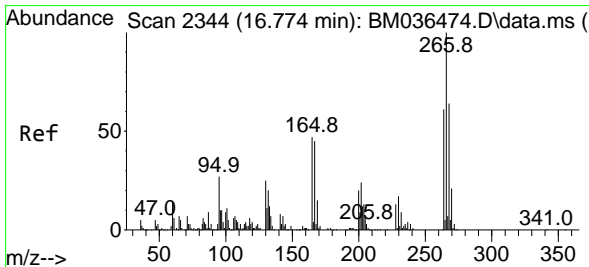
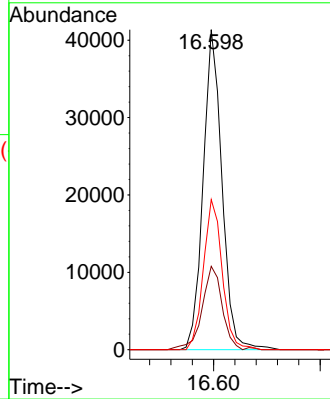
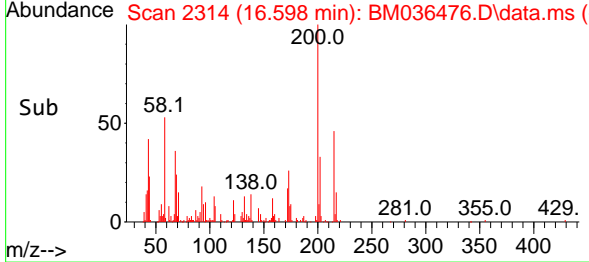


#70
 Atrazine
 Concen: 4.362 ng/ul
 RT: 16.598 min Scan# 21
 Delta R.T. -0.000 min
 Lab File: BM036476.D
 Acq: 01 Sep 2022 17:00

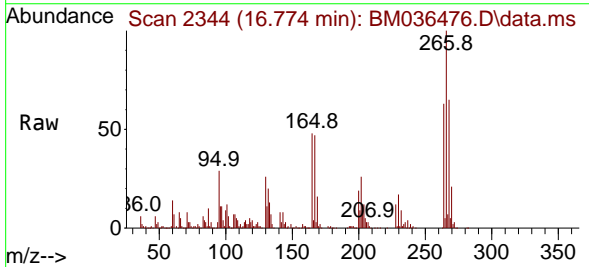
Instrument :
 BNA_M
 ClientSampleId :
 SLCS416



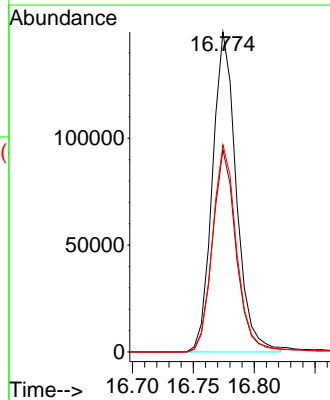
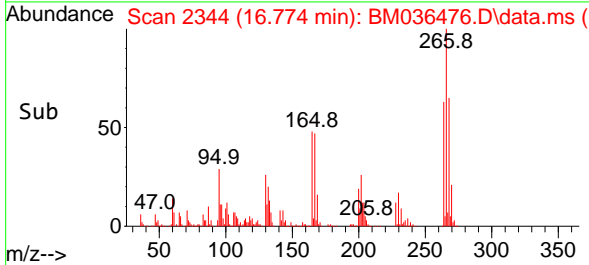
Tgt Ion:200 Resp: 50832
 Ion Ratio Lower Upper
 200 100
 173 26.1 21.3 31.9
 215 46.9 39.0 58.6

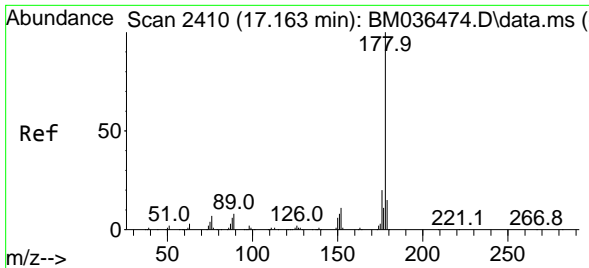


#71
 Pentachlorophenol
 Concen: 27.586 ng/ul
 RT: 16.774 min Scan# 2344
 Delta R.T. -0.000 min
 Lab File: BM036476.D
 Acq: 01 Sep 2022 17:00



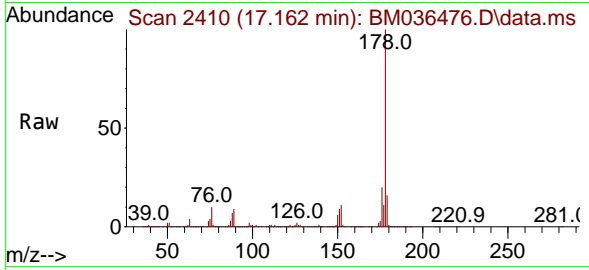
Tgt Ion:266 Resp: 203571
 Ion Ratio Lower Upper
 266 100
 264 63.2 49.5 74.3
 268 64.7 51.0 76.4



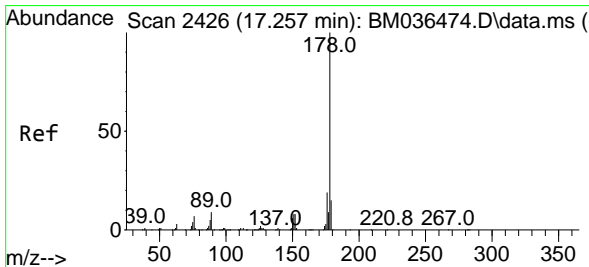
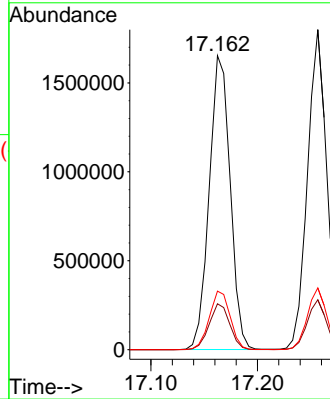
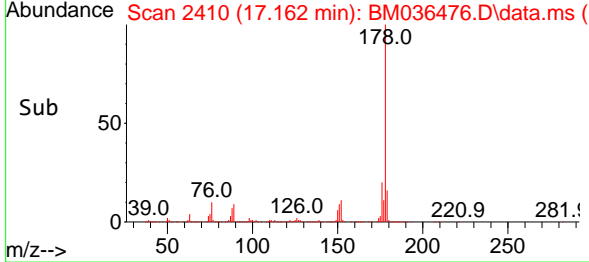


#72
 Phenanthrene
 Concen: 35.983 ng/u1
 RT: 17.162 min Scan# 2410
 Delta R.T. -0.000 min
 Lab File: BM036476.D
 Acq: 01 Sep 2022 17:00

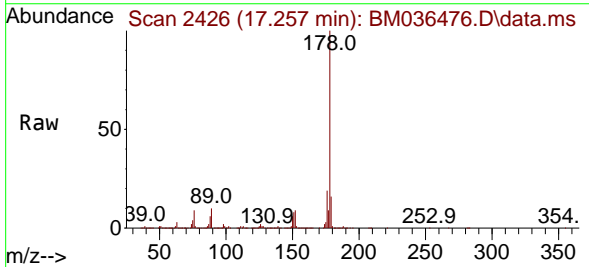
Instrument :
 BNA_M
 ClientSampleId :
 SLCS416



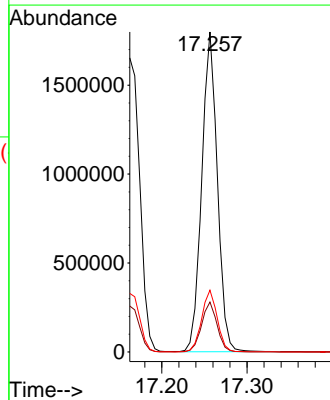
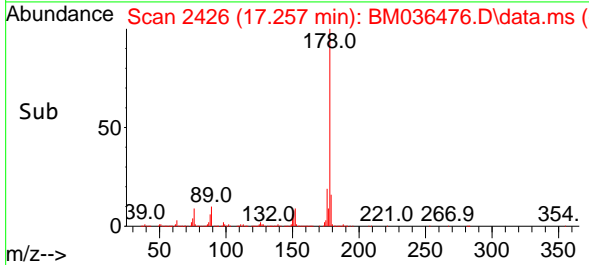
Tgt Ion:178 Resp: 2256502
 Ion Ratio Lower Upper
 178 100
 179 15.6 12.2 18.2
 176 19.9 14.9 22.3

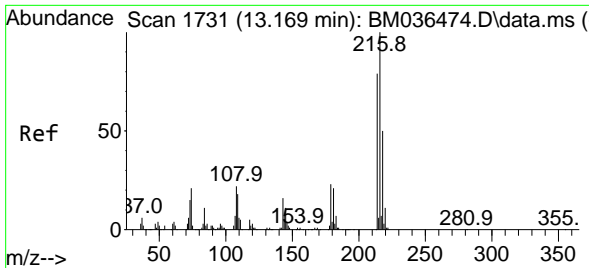


#74
 Anthracene
 Concen: 36.311 ng/u1
 RT: 17.257 min Scan# 2426
 Delta R.T. -0.000 min
 Lab File: BM036476.D
 Acq: 01 Sep 2022 17:00



Tgt Ion:178 Resp: 2282826
 Ion Ratio Lower Upper
 178 100
 179 15.6 12.2 18.2
 176 19.3 14.4 21.6



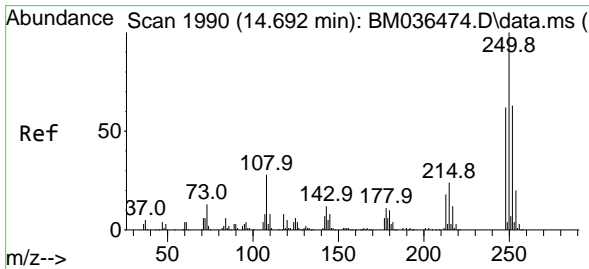
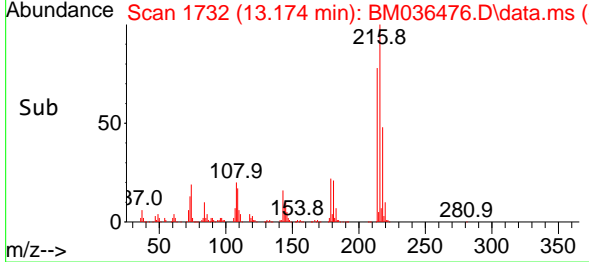
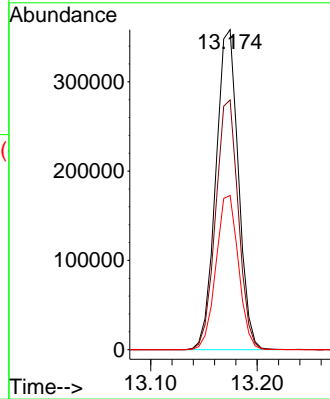
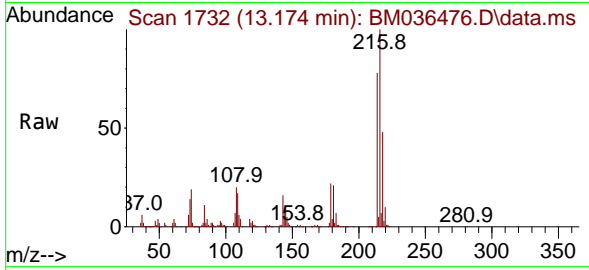


#75
 1,2,3,4-Tetrachlorobenzene
 Concen: 29.429 ng/uL
 RT: 13.174 min Scan# 1732
 Delta R.T. 0.006 min
 Lab File: BM036476.D
 Acq: 01 Sep 2022 17:00

Instrument : BNA_M
 ClientSampleId : SLCS416

Tgt Ion:216 Resp: 526722

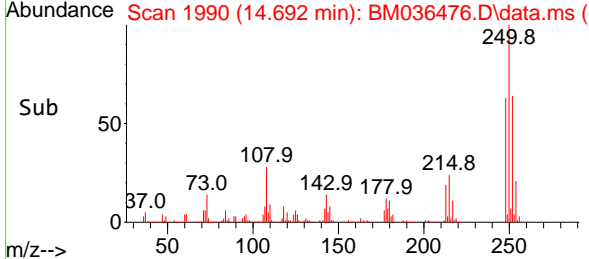
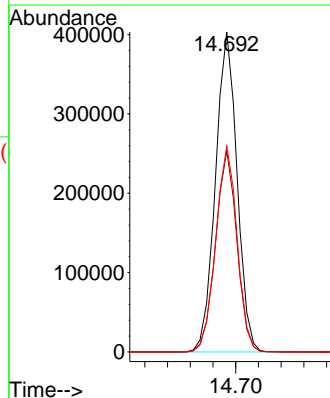
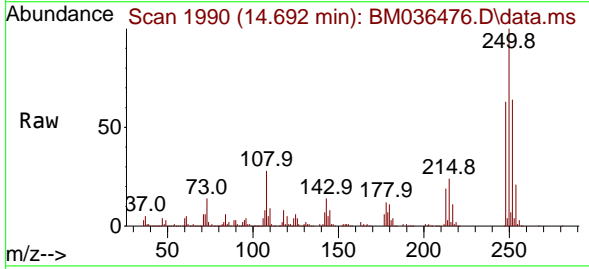
Ion	Ratio	Lower	Upper
216	100		
214	78.1	60.9	91.3
218	48.2	37.5	56.3

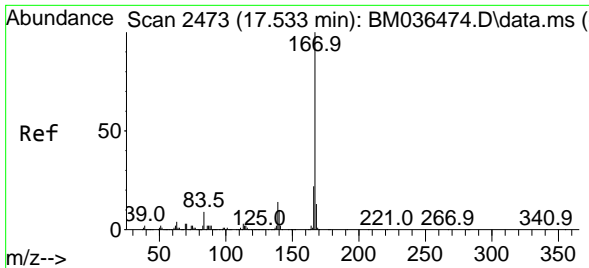


#76
 Pentachlorobenzene
 Concen: 31.820 ng/uL
 RT: 14.692 min Scan# 1990
 Delta R.T. -0.000 min
 Lab File: BM036476.D
 Acq: 01 Sep 2022 17:00

Tgt Ion:250 Resp: 531777

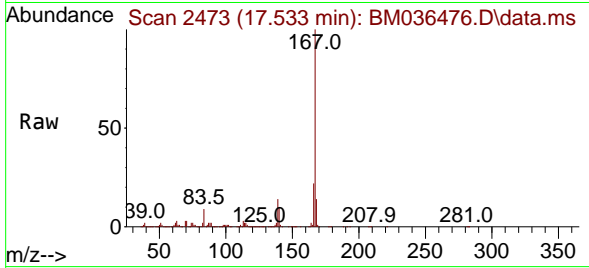
Ion	Ratio	Lower	Upper
250	100		
248	62.8	50.4	75.6
252	64.3	51.1	76.7



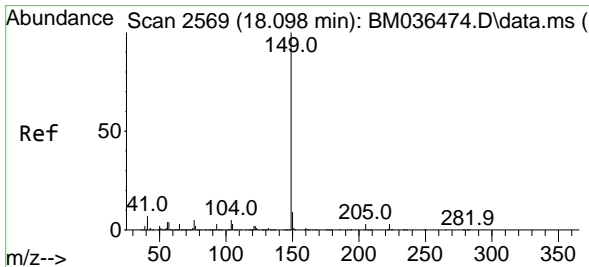
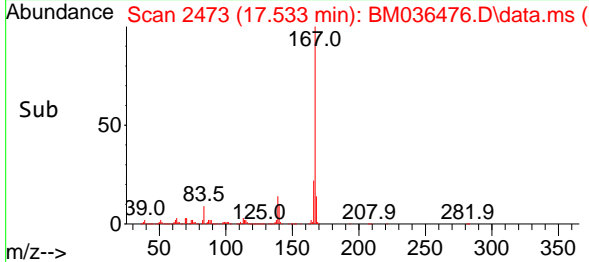
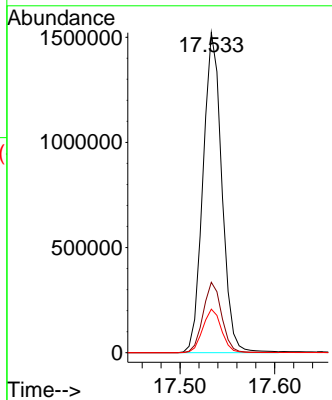


#77
 Carbazole
 Concen: 35.593 ng/uI
 RT: 17.533 min Scan# 2473
 Delta R.T. -0.000 min
 Lab File: BM036476.D
 Acq: 01 Sep 2022 17:00

Instrument : BNA_M
 ClientSampleId : SLCS416

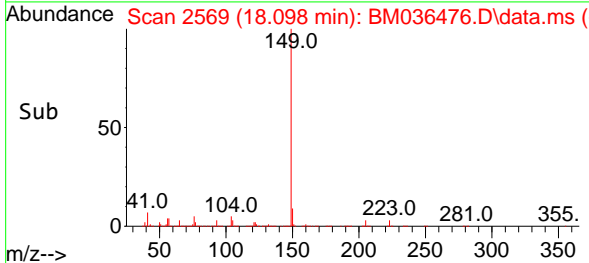
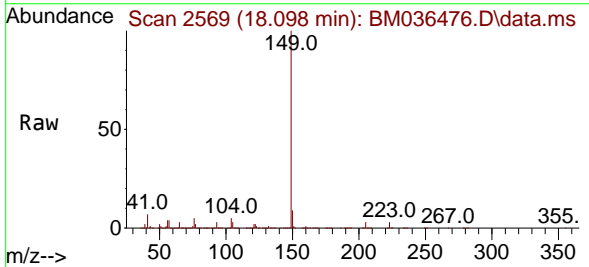
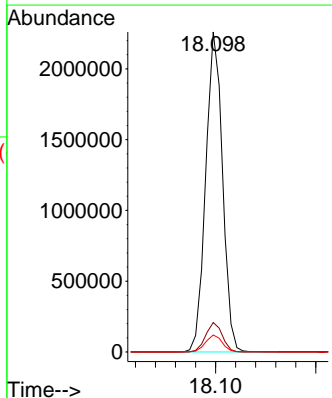


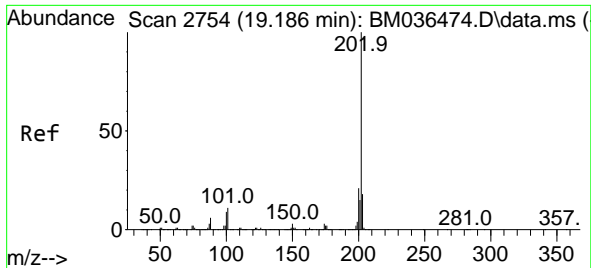
Tgt Ion:167 Resp: 2095135
 Ion Ratio Lower Upper
 167 100
 166 22.0 17.4 26.0
 139 13.6 10.1 15.1



#78
 Di-n-butylphthalate
 Concen: 40.836 ng/uI
 RT: 18.098 min Scan# 2569
 Delta R.T. -0.000 min
 Lab File: BM036476.D
 Acq: 01 Sep 2022 17:00

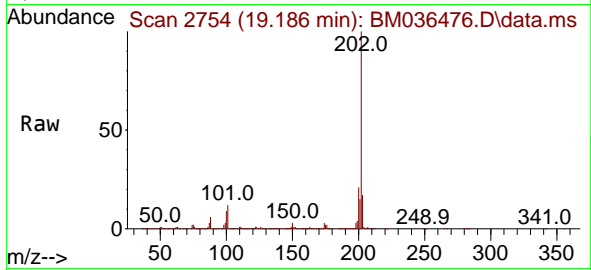
Tgt Ion:149 Resp: 2629127
 Ion Ratio Lower Upper
 149 100
 150 9.2 7.3 10.9
 104 5.3 3.7 5.5



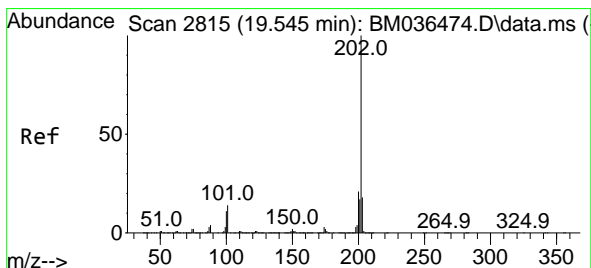
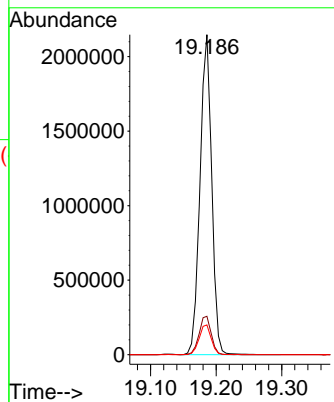
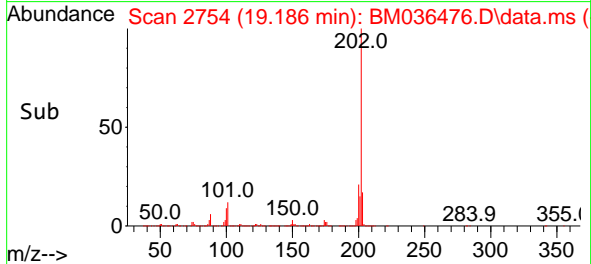


#80
 Fluoranthene
 Concen: 33.497 ng/u1
 RT: 19.186 min Scan# 2754
 Delta R.T. -0.000 min
 Lab File: BM036476.D
 Acq: 01 Sep 2022 17:00

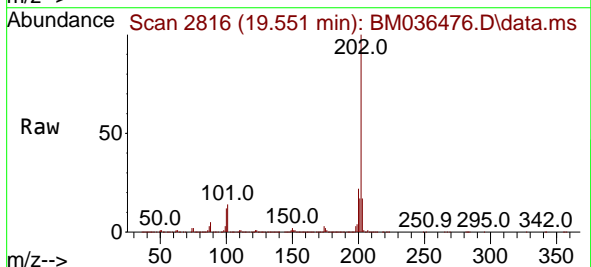
Instrument : BNA_M
 ClientSampleId : SLCS416



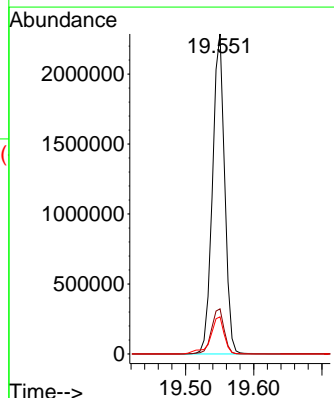
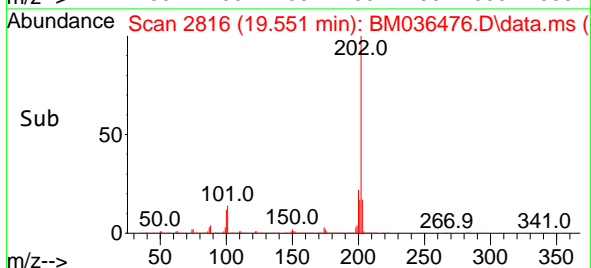
Tgt Ion:202 Resp: 2668166
 Ion Ratio Lower Upper
 202 100
 101 12.0 10.1 15.1
 100 9.3 7.8 11.6

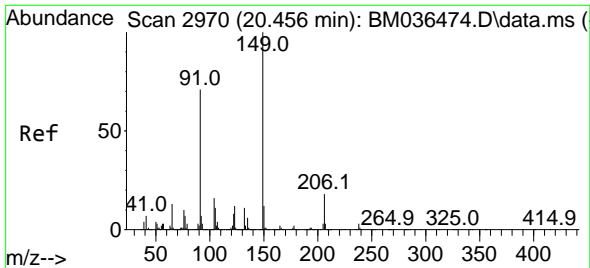


#82
 Pyrene
 Concen: 34.176 ng/u1
 RT: 19.551 min Scan# 2816
 Delta R.T. 0.006 min
 Lab File: BM036476.D
 Acq: 01 Sep 2022 17:00



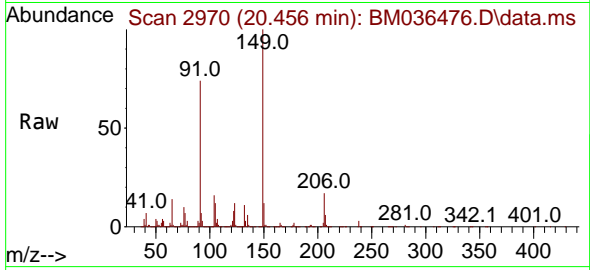
Tgt Ion:202 Resp: 2840799
 Ion Ratio Lower Upper
 202 100
 101 14.1 11.9 17.9
 100 11.6 10.2 15.4



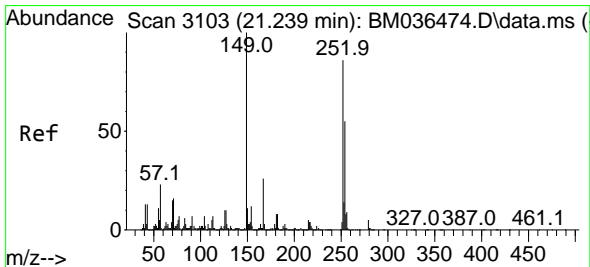
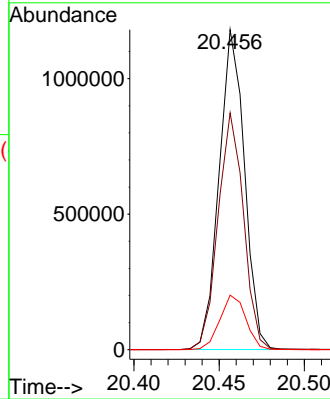
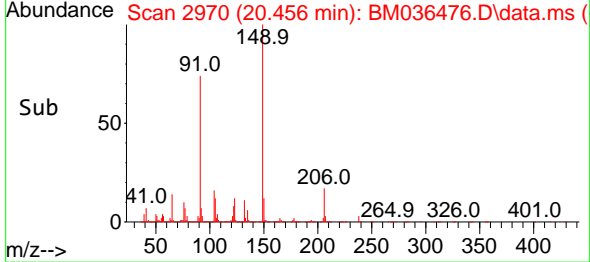


#83
 Butylbenzylphthalate
 Concen: 39.348 ng/ul
 RT: 20.456 min Scan# 2970
 Delta R.T. -0.000 min
 Lab File: BM036476.D
 Acq: 01 Sep 2022 17:00

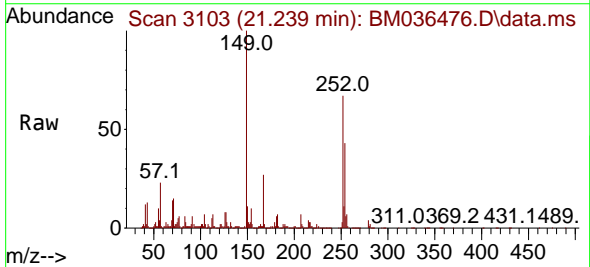
Instrument :
 BNA_M
 ClientSampleId :
 SLCS416



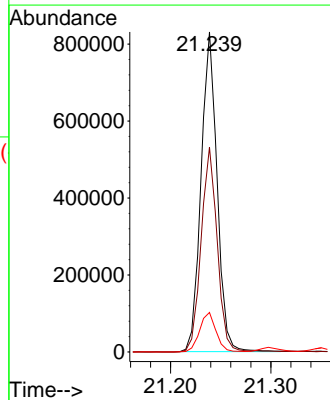
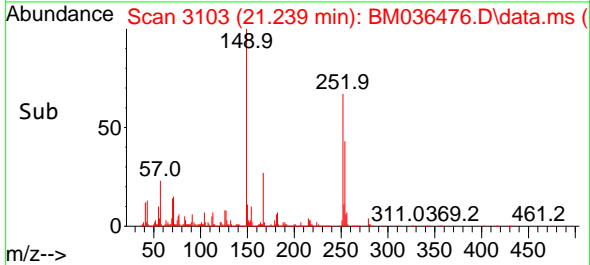
Tgt Ion:149 Resp: 1223579
 Ion Ratio Lower Upper
 149 100
 91 74.0 53.2 79.8
 206 17.1 16.0 24.0

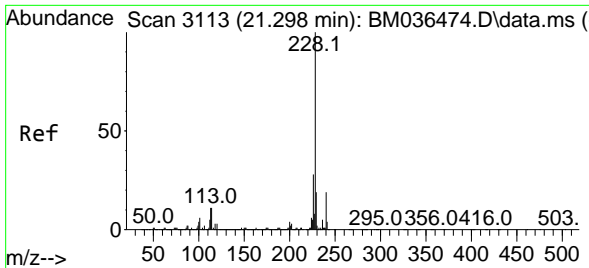


#84
 3,3'-Dichlorobenzidine
 Concen: 35.300 ng/ul
 RT: 21.239 min Scan# 3103
 Delta R.T. -0.000 min
 Lab File: BM036476.D
 Acq: 01 Sep 2022 17:00



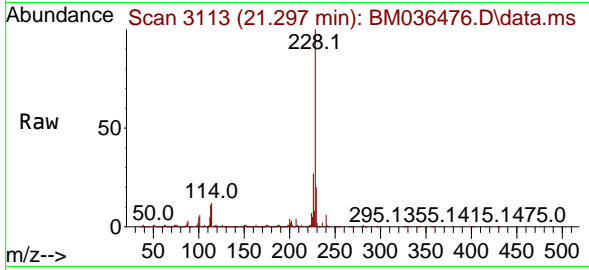
Tgt Ion:252 Resp: 923579
 Ion Ratio Lower Upper
 252 100
 254 64.0 52.4 78.6
 126 12.4 10.8 16.2



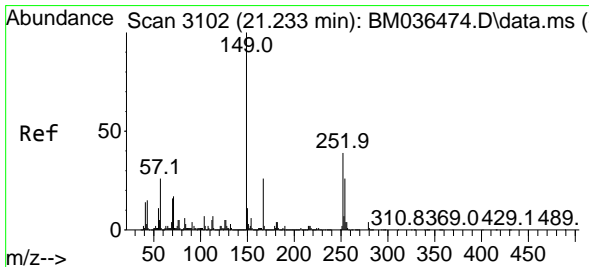
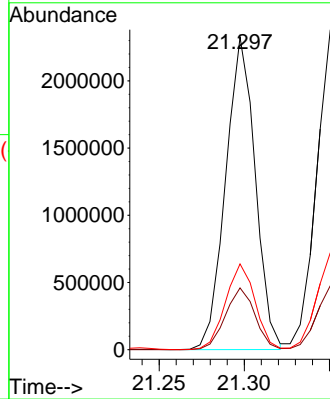
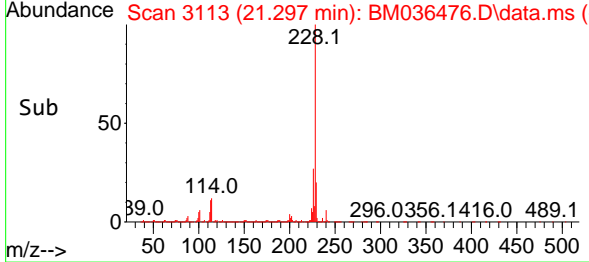


#85
 Benzo(a)anthracene
 Concen: 36.809 ng/uI
 RT: 21.297 min Scan# 3113
 Delta R.T. -0.000 min
 Lab File: BM036476.D
 Acq: 01 Sep 2022 17:00

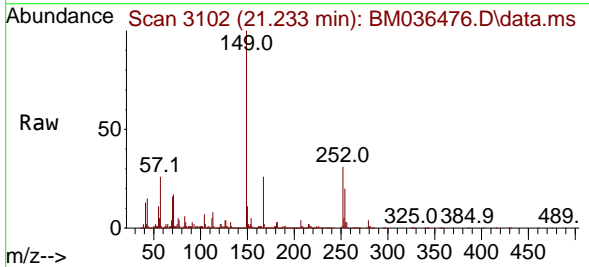
Instrument :
 BNA_M
 ClientSampleId :
 SLCS416



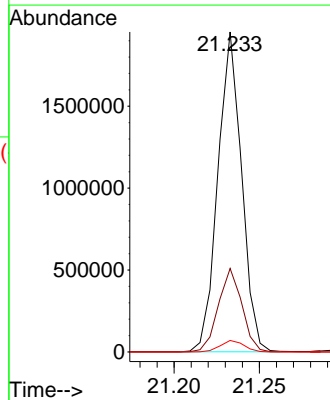
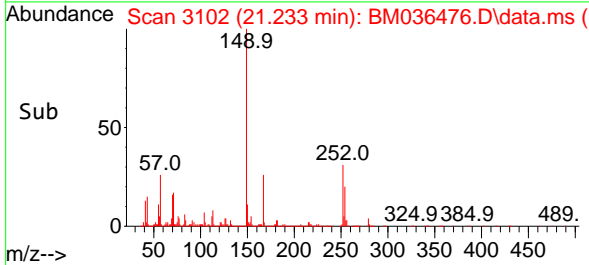
Tgt Ion:228 Resp: 2810440
 Ion Ratio Lower Upper
 228 100
 229 19.8 15.6 23.4
 226 27.4 21.7 32.5

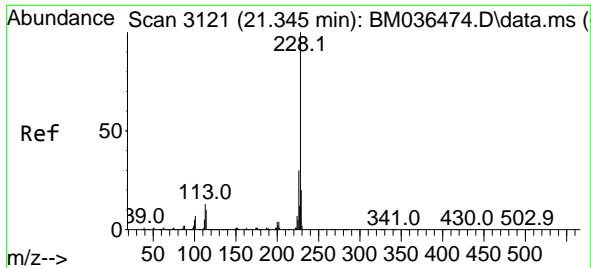


#86
 Bis(2-ethylhexyl)phthalate
 Concen: 44.040 ng/uI
 RT: 21.233 min Scan# 3102
 Delta R.T. -0.000 min
 Lab File: BM036476.D
 Acq: 01 Sep 2022 17:00



Tgt Ion:149 Resp: 1890860
 Ion Ratio Lower Upper
 149 100
 167 26.1 21.5 32.3
 279 3.6 3.4 5.2

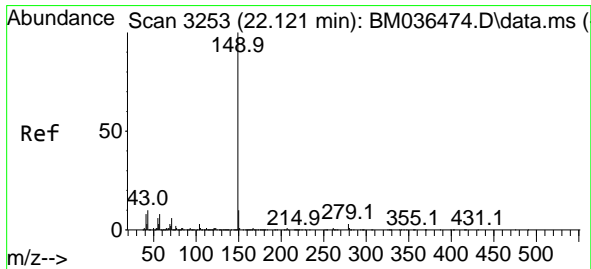
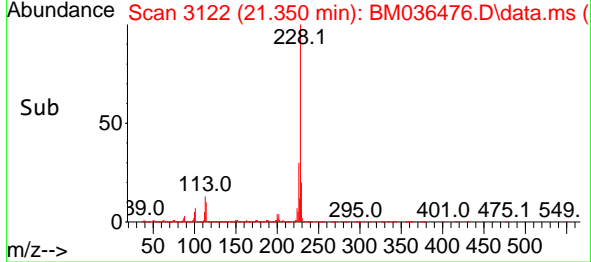
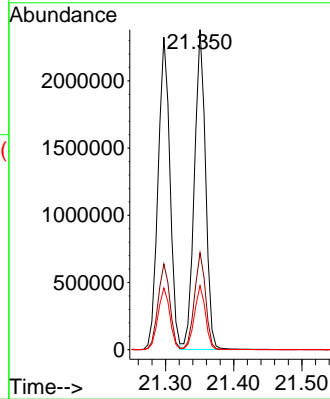
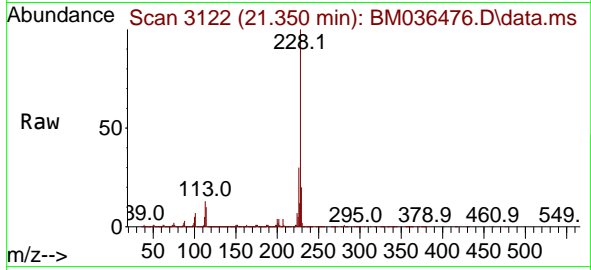




#87
 Chrysene
 Concen: 35.775 ng/u1
 RT: 21.350 min Scan# 31
 Delta R.T. 0.006 min
 Lab File: BM036476.D
 Acq: 01 Sep 2022 17:00

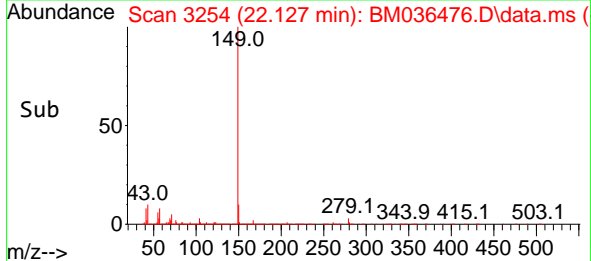
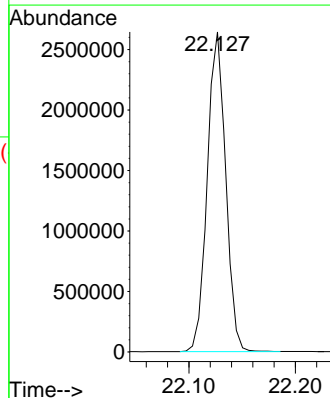
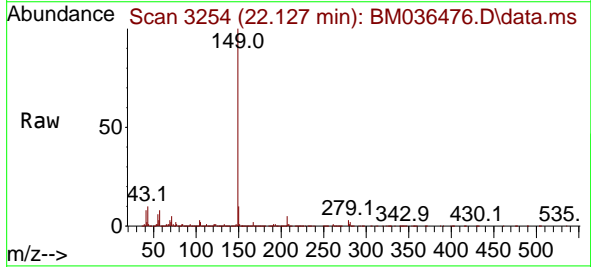
Instrument :
 BNA_M
 ClientSampleId :
 SLCS416

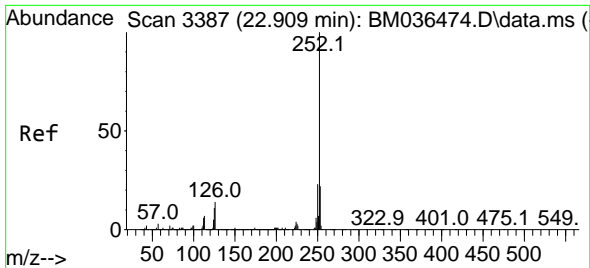
Tgt Ion:228 Resp: 2683930
 Ion Ratio Lower Upper
 228 100
 226 30.3 23.7 35.5
 229 20.0 15.5 23.3



#89
 Di-n-octyl phthalate
 Concen: 42.259 ng/u1
 RT: 22.127 min Scan# 3254
 Delta R.T. 0.006 min
 Lab File: BM036476.D
 Acq: 01 Sep 2022 17:00

Tgt Ion:149 Resp: 3172482



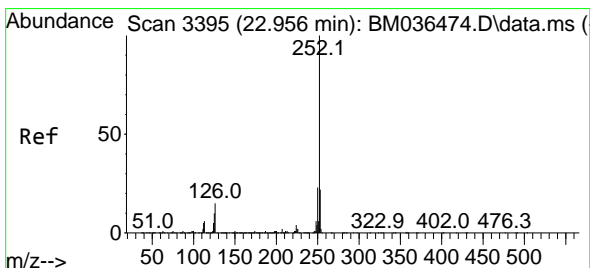
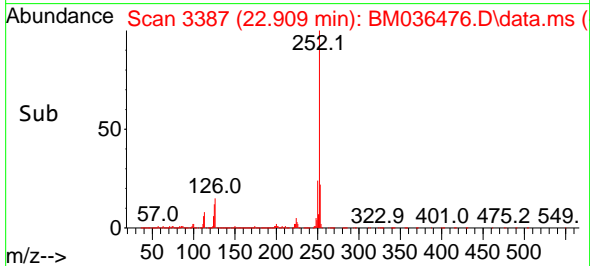
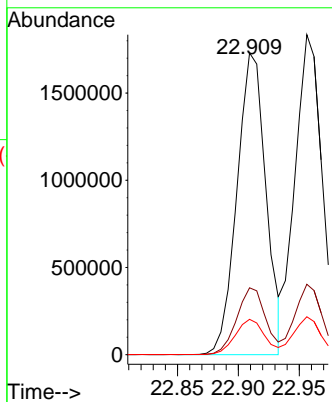
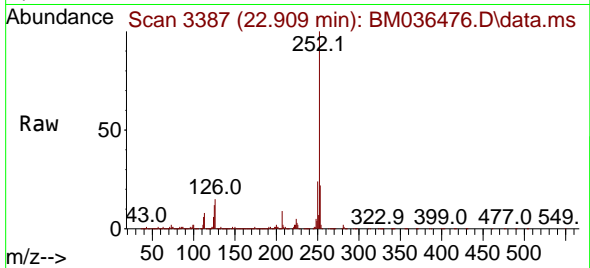


#90
 Benzo(b)fluoranthene
 Concen: 37.232 ng/u1
 RT: 22.909 min Scan# 31
 Delta R.T. -0.000 min
 Lab File: BM036476.D
 Acq: 01 Sep 2022 17:00

Instrument :
 BNA_M
 ClientSampleId :
 SLCS416

Tgt Ion:252 Resp: 2866645

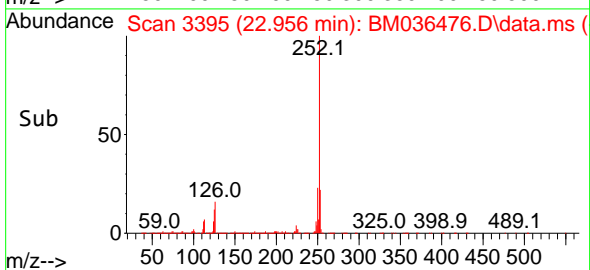
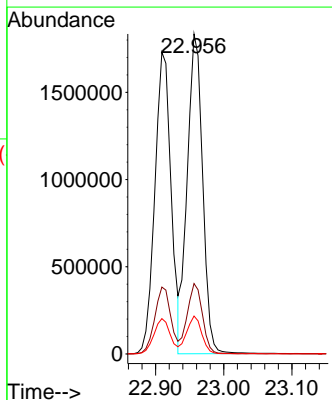
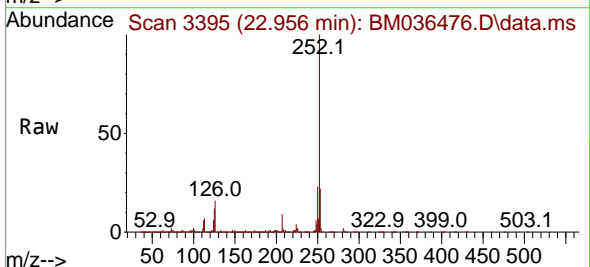
Ion	Ratio	Lower	Upper
252	100		
253	22.1	17.5	26.3
125	11.7	10.7	16.1

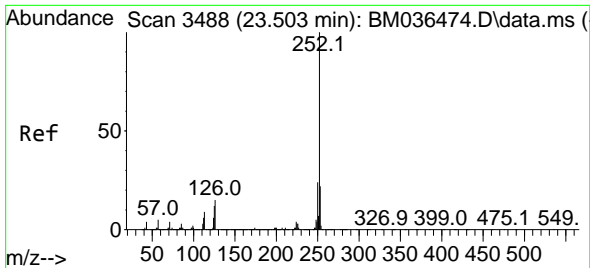


#91
 Benzo(k)fluoranthene
 Concen: 39.054 ng/u1
 RT: 22.956 min Scan# 3395
 Delta R.T. -0.000 min
 Lab File: BM036476.D
 Acq: 01 Sep 2022 17:00

Tgt Ion:252 Resp: 2860784

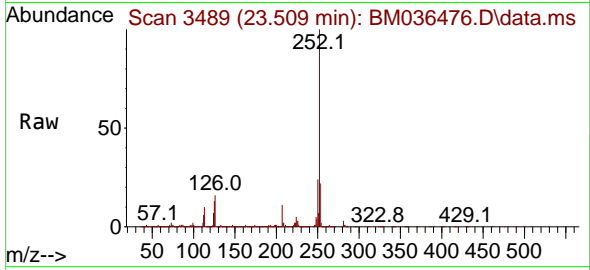
Ion	Ratio	Lower	Upper
252	100		
253	22.0	17.4	26.0
125	11.9	10.6	15.8



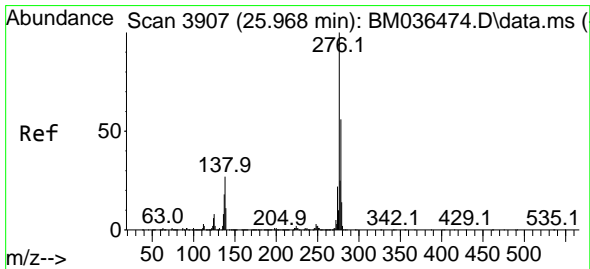
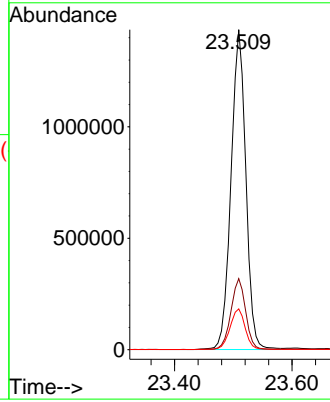
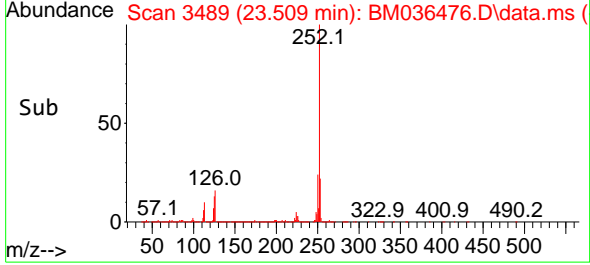


#93
 Benzo(a)pyrene
 Concen: 33.139 ng/u1
 RT: 23.509 min Scan# 3488
 Delta R.T. 0.006 min
 Lab File: BM036476.D
 Acq: 01 Sep 2022 17:00

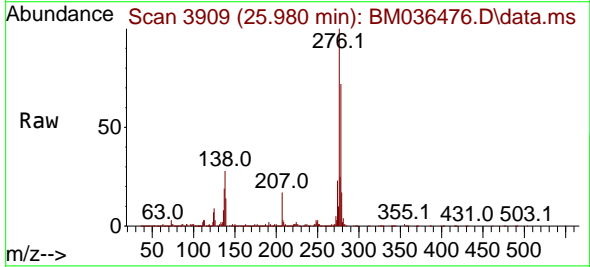
Instrument : BNA_M
 ClientSampleId : SLCS416



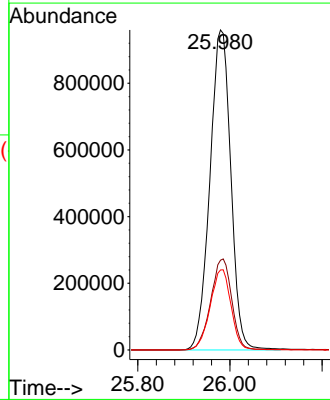
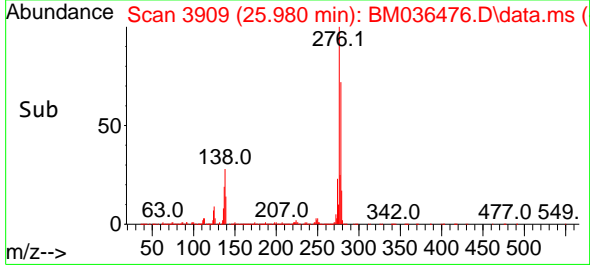
Tgt Ion:252 Resp: 2510159
 Ion Ratio Lower Upper
 252 100
 253 22.2 17.3 25.9
 125 12.8 11.8 17.8

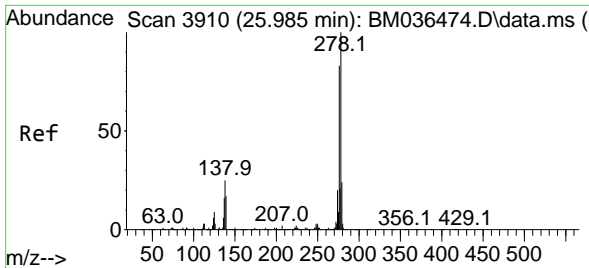


#94
 Indeno(1,2,3-cd)pyrene
 Concen: 33.953 ng/u1
 RT: 25.980 min Scan# 3909
 Delta R.T. 0.012 min
 Lab File: BM036476.D
 Acq: 01 Sep 2022 17:00



Tgt Ion:276 Resp: 3023723
 Ion Ratio Lower Upper
 276 100
 138 28.1 25.6 38.4
 277 25.0 20.1 30.1



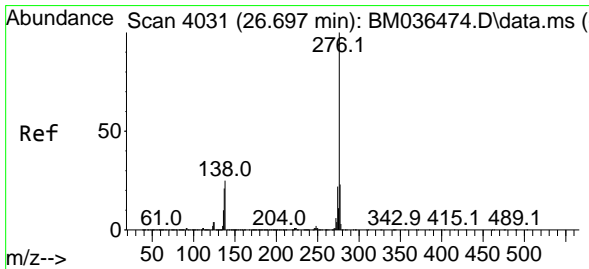
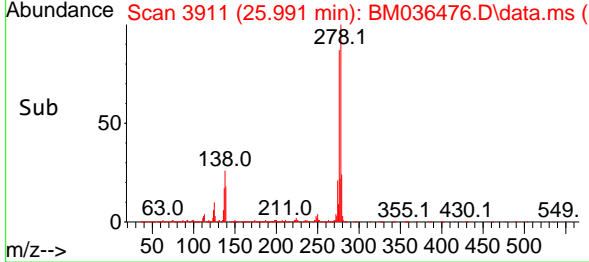
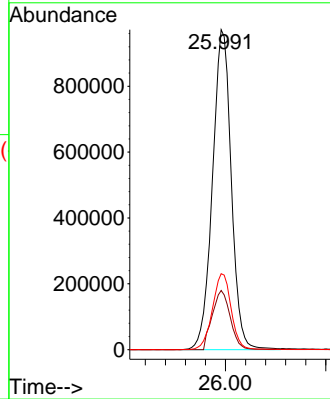
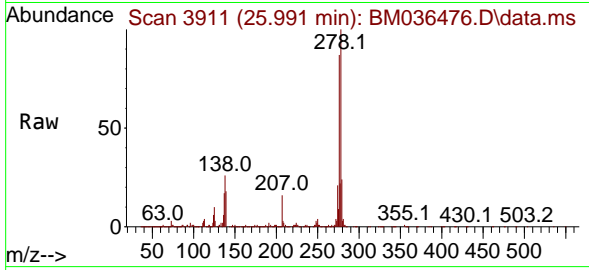


#95
 Dibenzo(a,h)anthracene
 Concen: 32.964 ng/ul
 RT: 25.991 min Scan# 3911
 Delta R.T. 0.006 min
 Lab File: BM036476.D
 Acq: 01 Sep 2022 17:00

Instrument :
 BNA_M
 ClientSampleId :
 SLCS416

Tgt Ion:278 Resp: 2528894

Ion	Ratio	Lower	Upper
278	100		
139	18.5	16.2	24.2
279	23.7	18.7	28.1



#96
 Benzo(g,h,i)perylene
 Concen: 30.872 ng/ul
 RT: 26.703 min Scan# 4032
 Delta R.T. 0.006 min
 Lab File: BM036476.D
 Acq: 01 Sep 2022 17:00

Tgt Ion:276 Resp: 2351114

Ion	Ratio	Lower	Upper
276	100		
138	24.9	21.3	31.9
277	24.0	18.6	28.0

