

Data Path : Z:\HPCHEM1\BNA_M\DATA\BM090316\
 Data File : BM007400.D
 Acq On : 03 Sep 2016 10:46
 Operator : UM/SJ
 Sample : H4639-17
 Misc :
 ALS Vial : 28 Sample Multiplier: 1

Instrument :
 BNA_M
 ClientSampled :
 BD393

Manual Integrations
 APPROVED

sohil
 9/6/2016 1:16:36 PM

Quant Time: Sep 06 08:40:33 2016
 Quant Method : Z:\HPCHEM1\BNA_M\METHODS\SOM02.2-EPA-BM082316.M
 Quant Title : SVOA CALIBRATION
 QLast Update : Mon Sep 05 01:45:04 2016
 Response via : Initial Calibration

Internal Standards	R.T.	QIon	Response	Conc	Units	Dev(Min)
1) 1,4-Dichlorobenzene-d4	7.79	152	217512	20.00	ng/ul	0.00
18) Naphthalene-d8	10.58	136	1023024	20.00	ng/ul	0.00
35) Acenaphthene-d10	14.43	164	692875	20.00	ng/ul	0.00
61) Phenanthrene-d10	17.17	188	1779827	20.00	ng/ul	0.00
75) Chrysene-d12	21.35	240	2284841	20.00	ng/ul	0.00
83) Perylene-d12	23.63	264	2170950	20.00	ng/ul	0.00

System Monitoring Compounds

3) 1,4-Dioxane-d8	3.30	96	12591	2.96	ng/uL	0.00
5) Phenol-d5	6.96	99	368074	17.91	ng/ul	0.00
7) Bis-(2-Chloroethyl)ether-d	7.13	67	210631	19.51	ng/ul	0.00
9) 2-Chlorophenol-d4	7.33	132	292274	19.25	ng/ul	0.00
13) 4-Methylphenol-d8	8.49	113	296775	16.56	ng/ul	0.00
19) Nitrobenzene-d5	8.95	128	160452	21.36	ng/ul	0.00
22) 2-Nitrophenol-d4	9.66	143	189338	21.59	ng/ul	0.00
26) 2,4-Dichlorophenol-d3	10.20	165	349810	20.03	ng/ul	0.00
29) 4-Chloroaniline-d4	10.72	131	241789	11.10	ng/ul	0.00
43) Dimethylphthalate-d6	13.83	166	1283089	21.46	ng/ul	0.00
46) Acenaphthylene-d8	14.12	160	1561705	22.54	ng/ul	0.00
51) 4-Nitrophenol-d4	14.63	143	135114	11.97	ng/ul	0.00
57) Fluorene-d10	15.42	176	1180352	22.83	ng/ul	0.00
62) 4,6-Dinitro-2-methylphenol	15.54	200	203309	18.17	ng/ul	0.00
70) Anthracene-d10	17.27	188	1918040	23.07	ng/ul	0.00
76) Pyrene-d10	19.56	212	2454390	25.69	ng/ul	0.00
87) Benzo(a)pyrene-d12	23.48	264	2328545	23.29	ng/ul	0.00

Target Compounds

Target Compounds	R.T.	QIon	Response	Conc	Units	Qvalue
28) Naphthalene	10.63	128	198332	3.90	ng/ul	99
34) 2-Methylnaphthalene	12.24	142	119212	2.86	ng/ul	99
44) Dimethylphthalate	13.88	163	697647	11.72	ng/ul	100
53) Dibenzofuran	14.82	168	169891	2.45	ng/ul	93
69) Phenanthrene	17.21	178	712715	7.46	ng/ul	99
71) Anthracene	17.30	178	156224	1.58	ng/ul	96
74) Fluoranthene	19.23	202	1343293	11.20	ng/ul	98
77) Pyrene	19.59	202	935429	7.63	ng/ul	98
80) Benzo(a)anthracene	21.33	228	555385m	4.12	ng/ul	
81) Bis(2-ethylhexyl)phthalate	21.26	149	74101	1.00	ng/ul#	95
82) Chrysene	21.39	228	1331937m	10.92	ng/ul	
85) Benzo(b)fluoranthene	22.94	252	1520415	11.84	ng/ul	98
86) Benzo(k)fluoranthene	22.98	252	311340m	2.62	ng/ul	
88) Benzo(a)pyrene	23.53	252	352632	2.87	ng/ul#	93
89) Indeno(1,2,3-cd)pyrene	25.91	276	340459	2.26	ng/ul	96
91) Benzo(g,h,i)perylene	26.61	276	266290	2.08	ng/ul	99

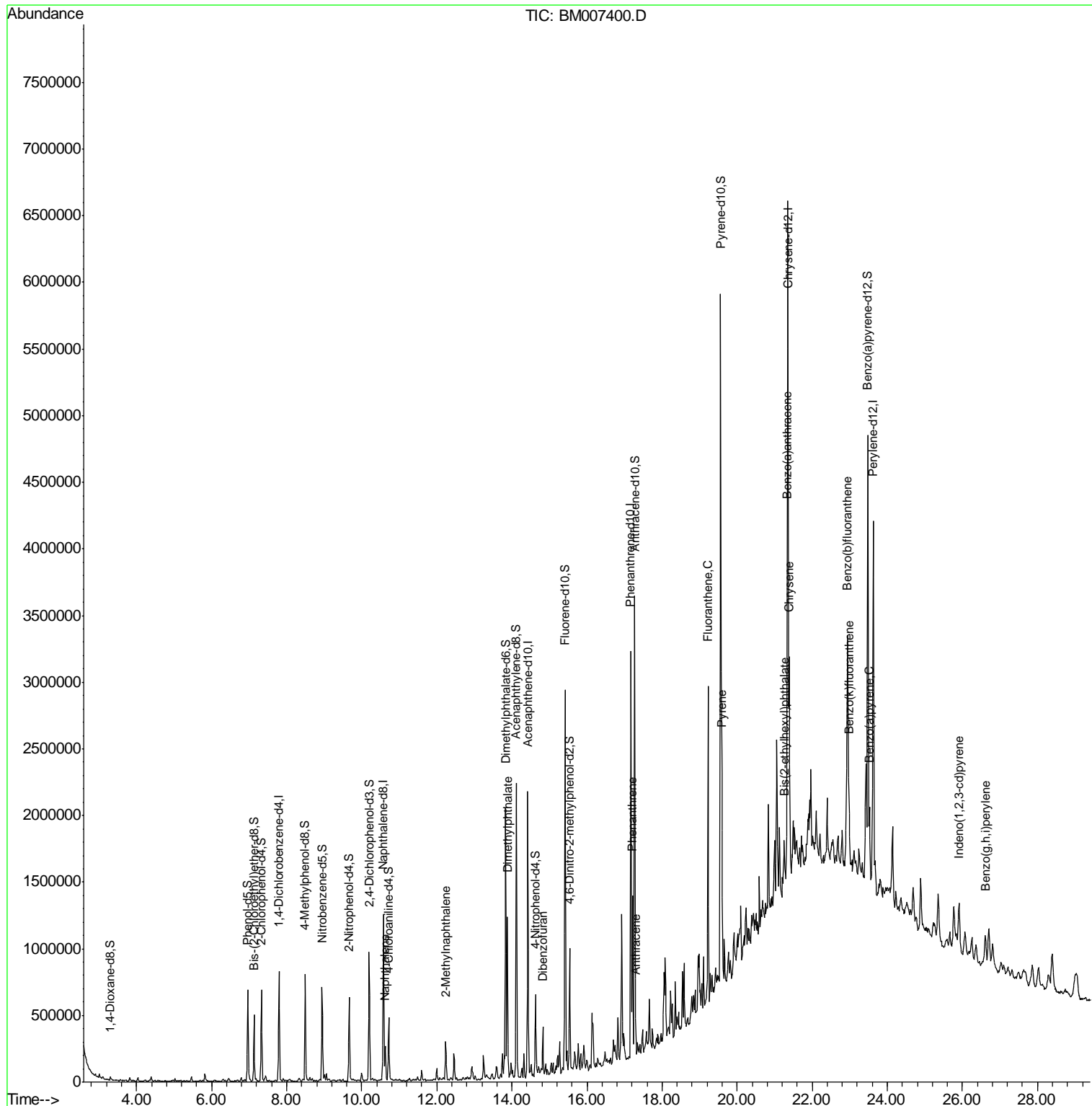
(#) = qualifier out of range (m) = manual integration (+) = signals summed

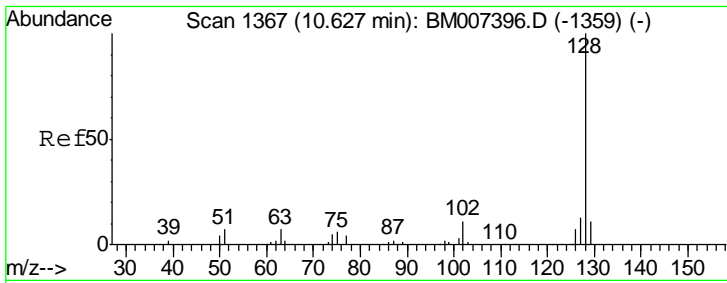
Data Path : Z:\HPCHEM1\BNA_M\DATA\BM090316\
 Data File : BM007400.D
 Acq On : 03 Sep 2016 10:46
 Operator : UM/SJ
 Sample : H4639-17
 Misc :
 ALS Vial : 28 Sample Multiplier: 1

Instrument :
 BNA_M
 Client Sampled :
 BD393

Manual Integrations
 APPROVED
 sohil
 9/6/2016 1:16:36 PM

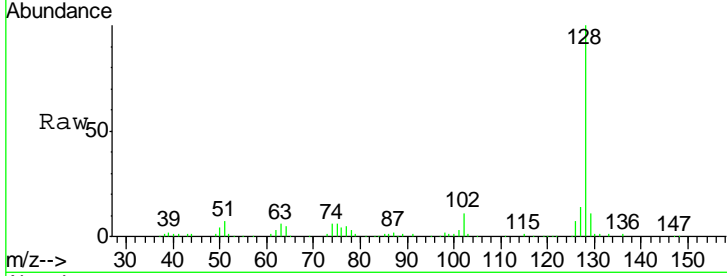
Quant Time: Sep 06 08:40:33 2016
 Quant Method : Z:\HPCHEM1\BNA_M\METHODS\SOM02.2-EPA-BM082316.M
 Quant Title : SVOA CALIBRATION
 QLast Update : Mon Sep 05 01:45:04 2016
 Response via : Initial Calibration





#28
 Naphthalene
 Concen: 3.90 ng/ul
 RT: 10.63 min Scan# 1367
 Delta R.T. 0.00 min
 Lab File: BM007400.D
 Acq: 03 Sep 2016 10:46

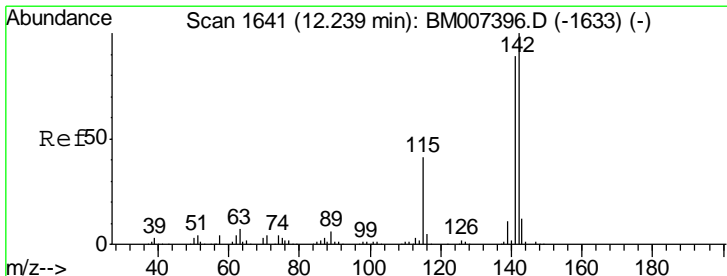
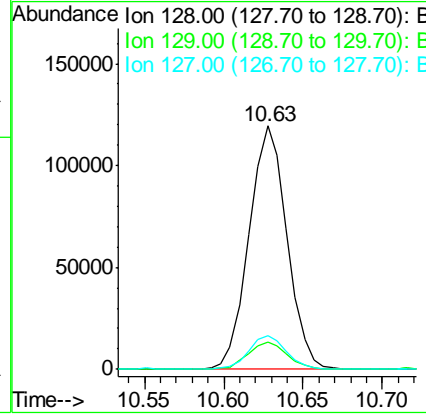
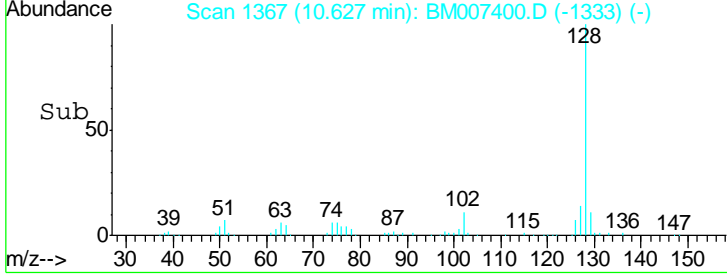
Instrument :
 BNA_M
ClientSampled :
 BD393



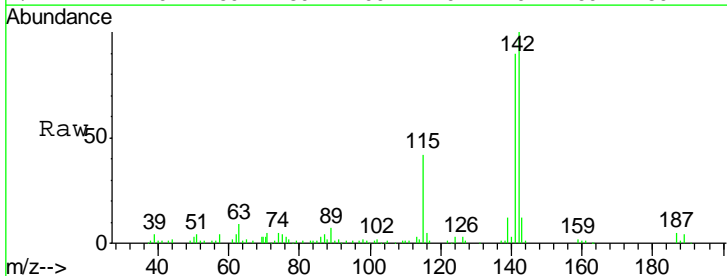
Tgt Ion: 128 Resp: 198332

Ion	Ratio	Lower	Upper
128	100		
129	11.0	8.6	12.8
127	13.7	10.6	15.8

Manual Integrations
APPROVED
 sohil
 9/6/2016 1:16:36 PM

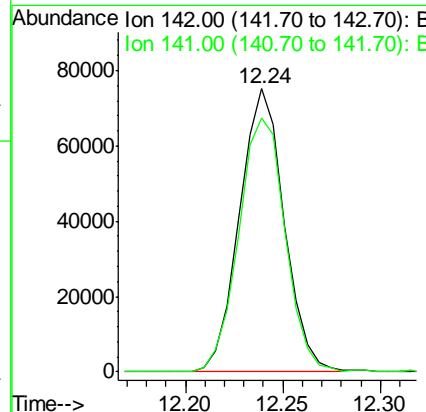
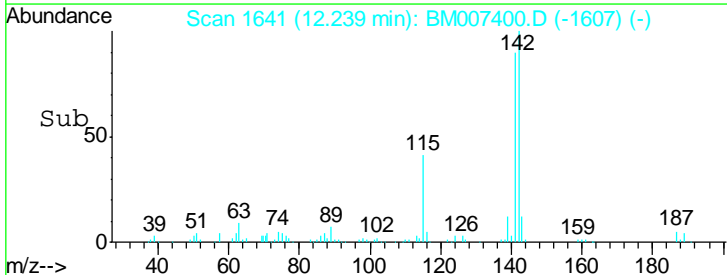


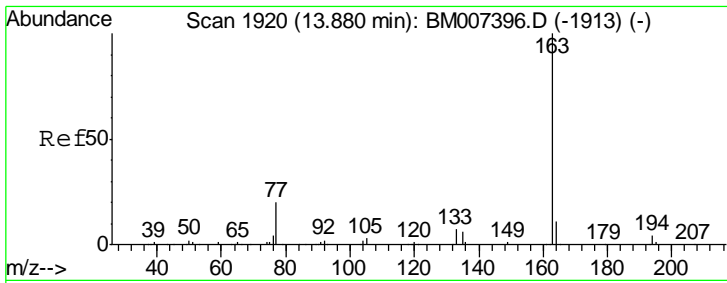
#34
 2-Methylnaphthalene
 Concen: 2.86 ng/ul
 RT: 12.24 min Scan# 1641
 Delta R.T. 0.00 min
 Lab File: BM007400.D
 Acq: 03 Sep 2016 10:46



Tgt Ion: 142 Resp: 119212

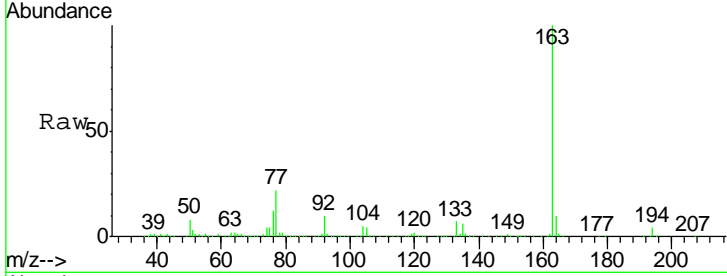
Ion	Ratio	Lower	Upper
142	100		
141	89.6	71.3	106.9





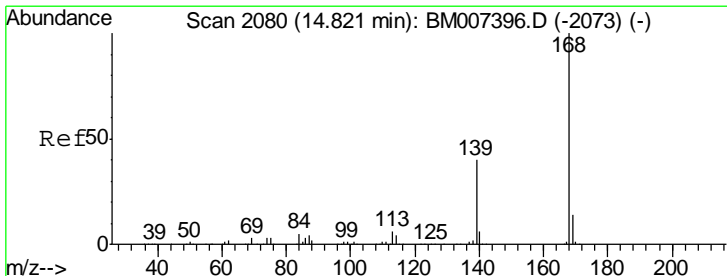
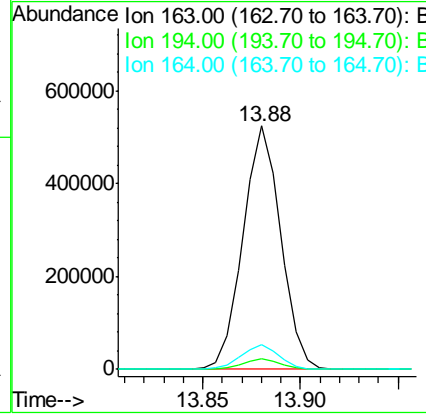
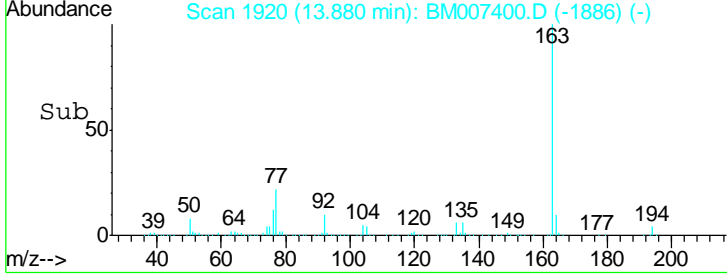
#44
 Dimethylphthalate
 Concen: 11.72 ng/ul
 RT: 13.88 min Scan# 1920
 Delta R.T. 0.00 min
 Lab File: BM007400.D
 Acq: 03 Sep 2016 10:46

Instrument :
 BNA_M
 ClientSampled :
 BD393

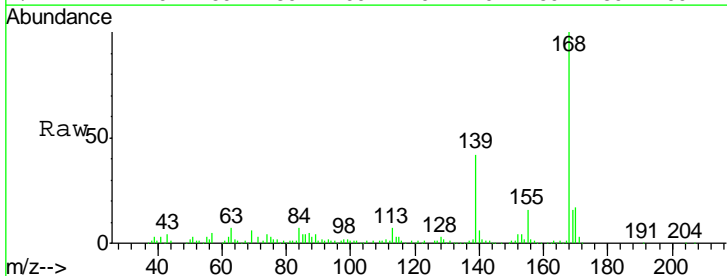


Tgt Ion	Resp	Lower	Upper
163	100		
194	4.4	3.4	5.2
164	10.0	7.8	11.8

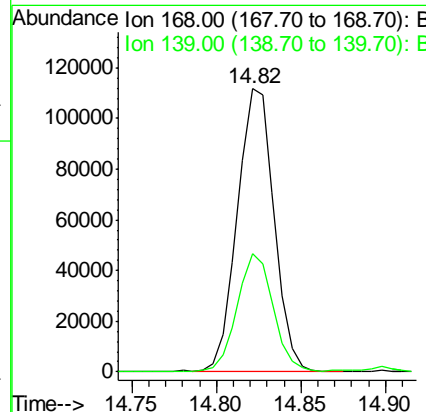
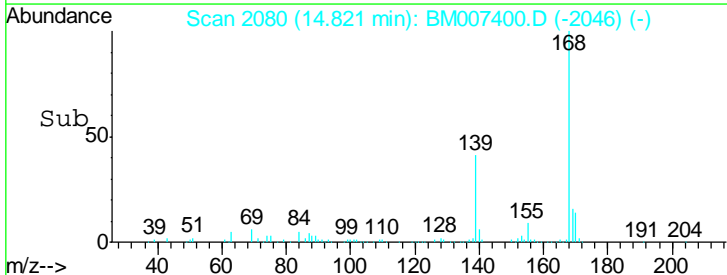
Manual Integrations
 APPROVED
 sohil
 9/6/2016 1:16:36 PM

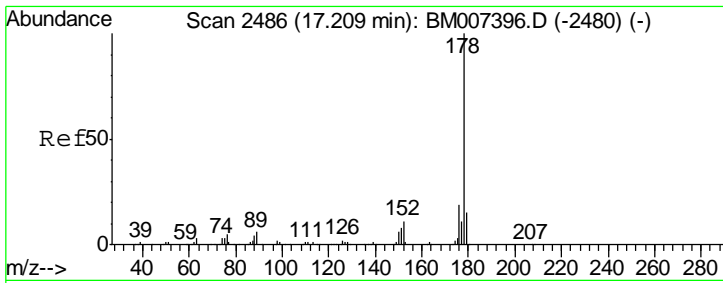


#53
 Dibenzofuran
 Concen: 2.45 ng/ul
 RT: 14.82 min Scan# 2080
 Delta R.T. 0.00 min
 Lab File: BM007400.D
 Acq: 03 Sep 2016 10:46



Tgt Ion	Resp	Lower	Upper
168	100		
139	41.7	30.1	45.1



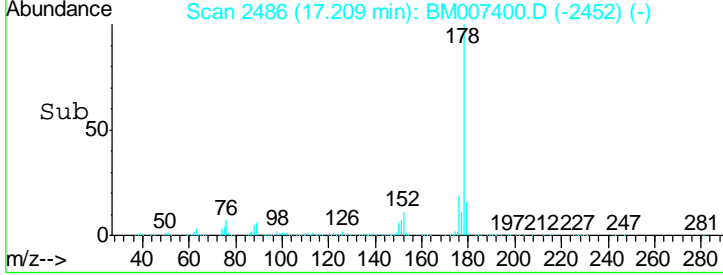
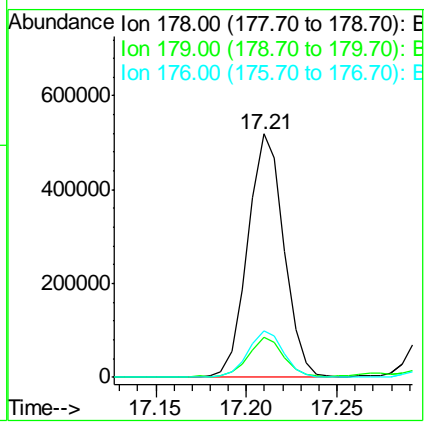
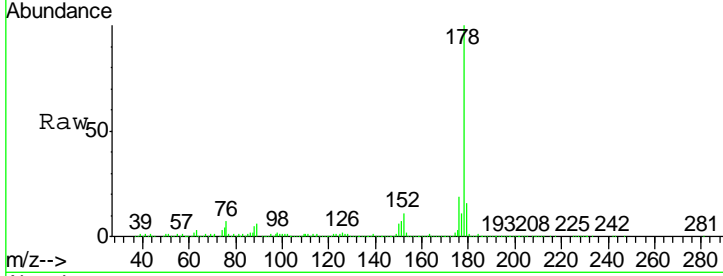


#69
 Phenanthrene
 Concen: 7.46 ng/ul
 RT: 17.21 min Scan# 2486
 Delta R.T. 0.00 min
 Lab File: BM007400.D
 Acq: 03 Sep 2016 10:46

Instrument :
 BNA_M
ClientSampled :
 BD393

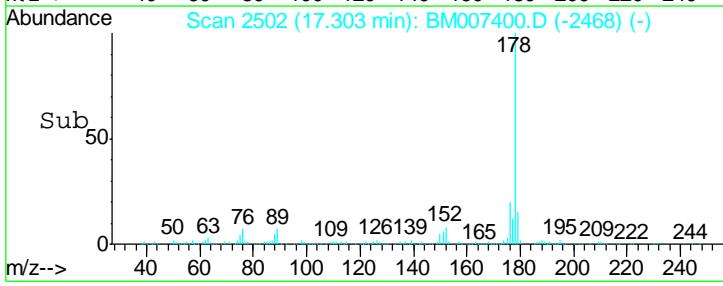
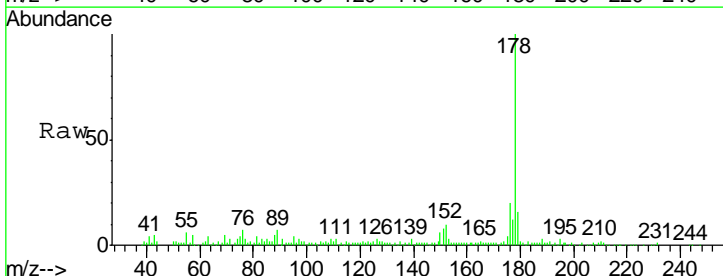
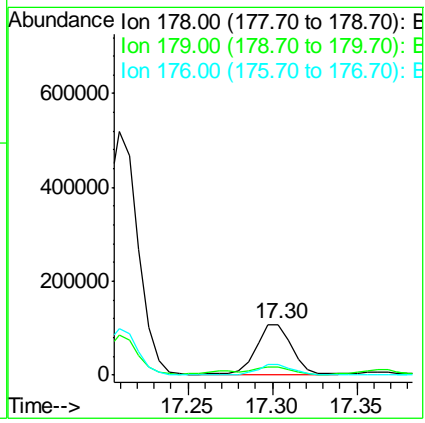
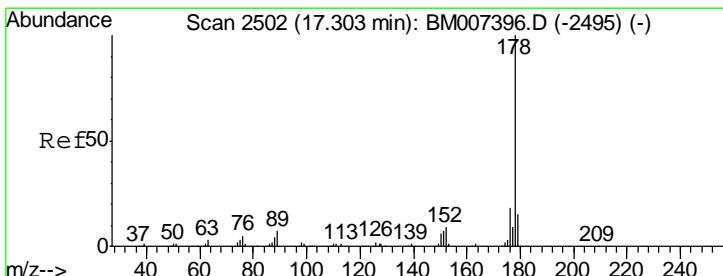
Tgt Ion	Resp	Lower	Upper
178	712715		
179	16.2	12.2	18.2
176	19.2	15.1	22.7

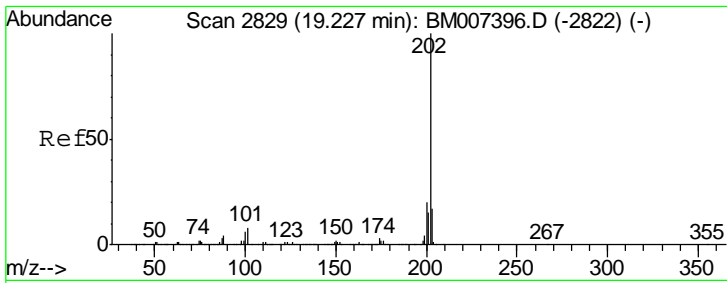
Manual Integrations
APPROVED
 sohil
 9/6/2016 1:16:36 PM



#71
 Anthracene
 Concen: 1.58 ng/ul
 RT: 17.30 min Scan# 2502
 Delta R.T. 0.00 min
 Lab File: BM007400.D
 Acq: 03 Sep 2016 10:46

Tgt Ion	Resp	Lower	Upper
178	156224		
179	16.1	12.1	18.1
176	20.1	14.5	21.7





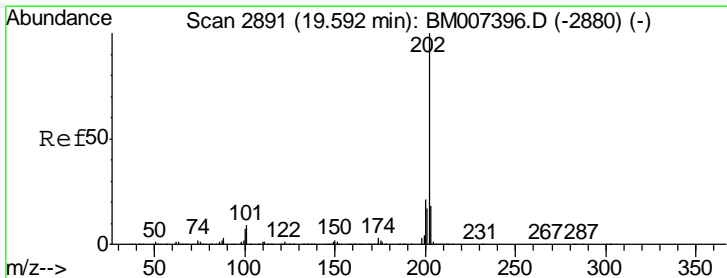
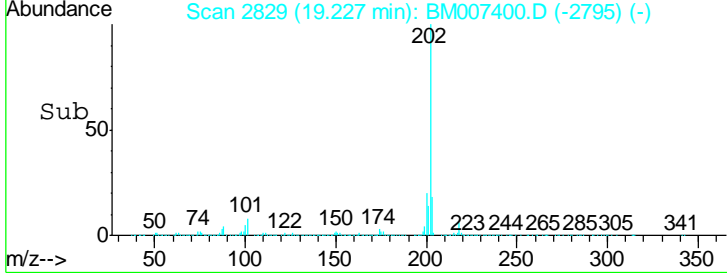
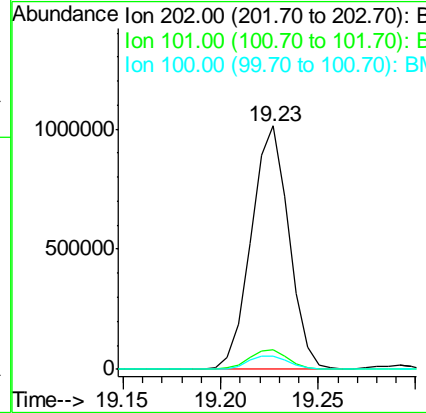
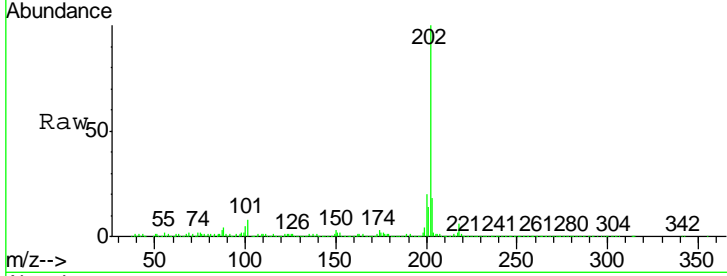
#74
 Fluoranthene
 Concen: 11.20 ng/ul
 RT: 19.23 min Scan# 2829
 Delta R.T. 0.00 min
 Lab File: BM007400.D
 Acq: 03 Sep 2016 10:46

Instrument :
 BNA_M
 ClientSampled :
 BD393

Tgt Ion	Ratio	Lower	Upper
202	100		
101	8.2	6.9	10.3
100	5.4	5.4	8.0

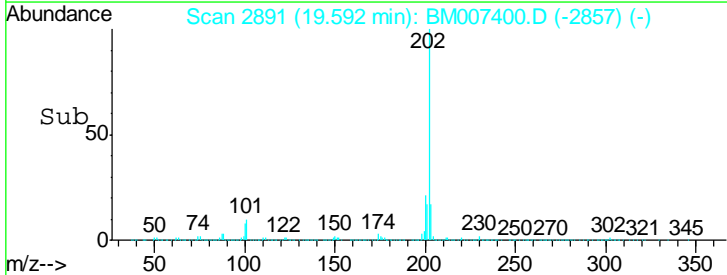
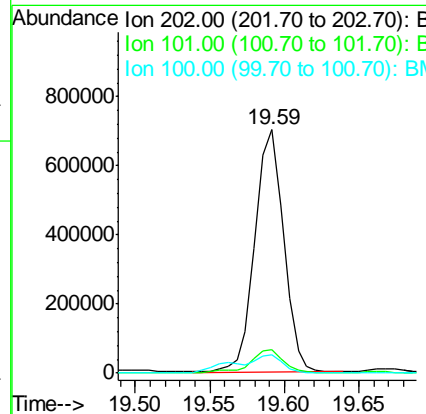
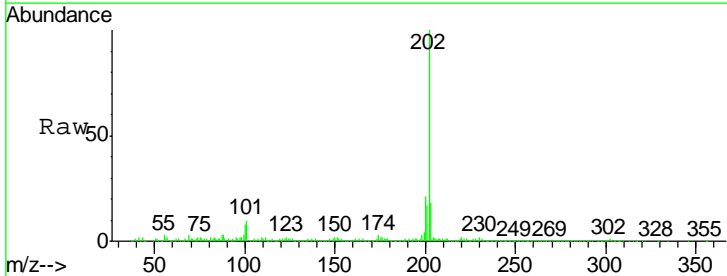
Manual Integrations
 APPROVED

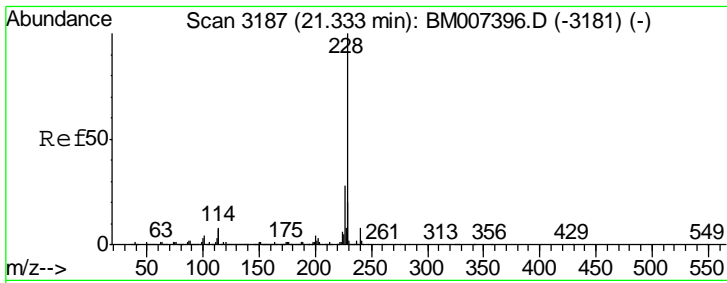
sohil
 9/6/2016 1:16:36 PM



#77
 Pyrene
 Concen: 7.63 ng/ul
 RT: 19.59 min Scan# 2891
 Delta R.T. 0.00 min
 Lab File: BM007400.D
 Acq: 03 Sep 2016 10:46

Tgt Ion	Ratio	Lower	Upper
202	100		
101	9.7	8.4	12.6
100	7.7	6.9	10.3





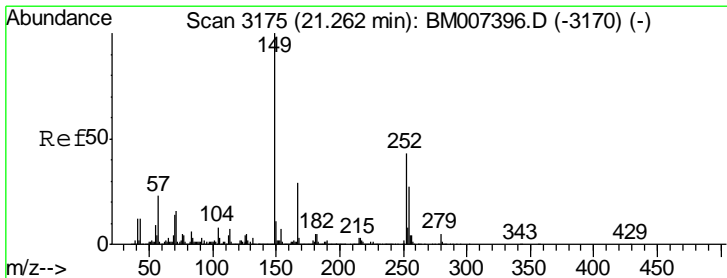
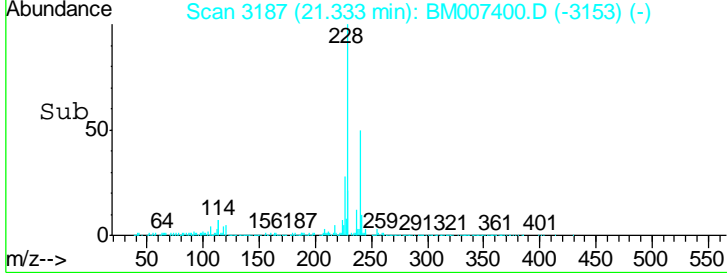
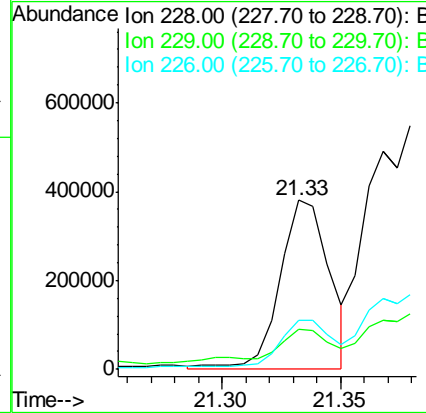
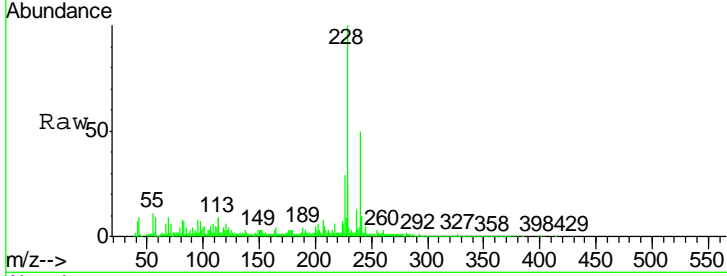
#80
 Benzo(a)anthracene
 Concen: 4.12 ng/ul m
 RT: 21.33 min Scan# 3187
 Delta R.T. 0.00 min
 Lab File: BM007400.D
 Acq: 03 Sep 2016 10:46

Instrument :
 BNA_M
 ClientSampled :
 BD393

Tgt Ion	Resp	Lower	Upper
228	100		
229	23.6	15.6	23.4#
226	29.3	21.8	32.8

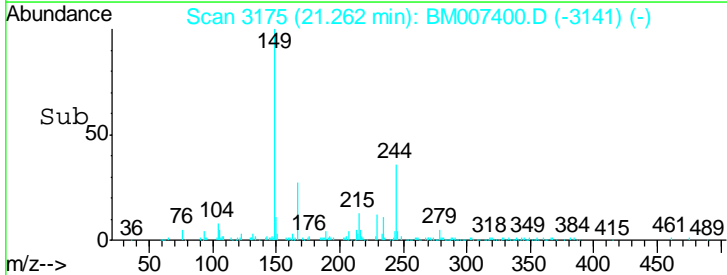
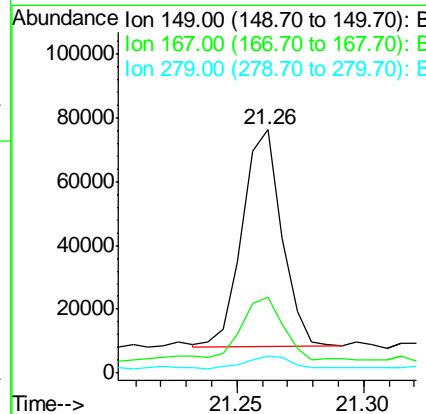
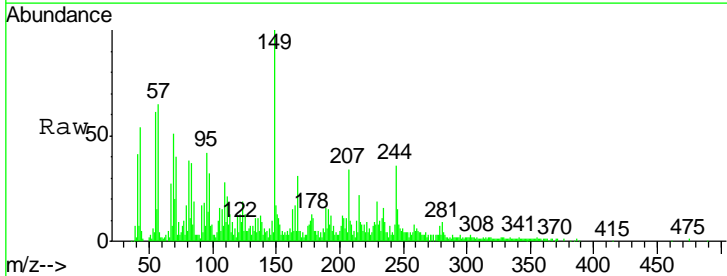
Manual Integrations
 APPROVED

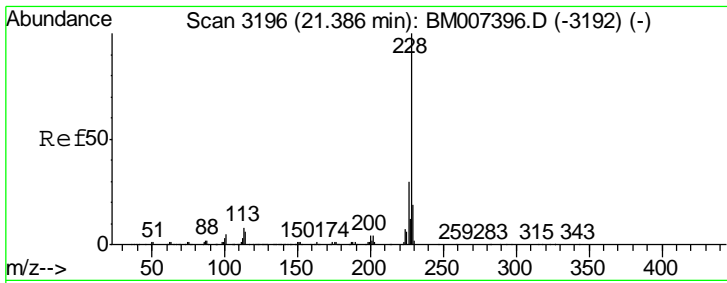
sohil
 9/6/2016 1:16:36 PM



#81
 Bis(2-ethylhexyl)phthalate
 Concen: 1.00 ng/ul
 RT: 21.26 min Scan# 3175
 Delta R.T. 0.00 min
 Lab File: BM007400.D
 Acq: 03 Sep 2016 10:46

Tgt Ion	Resp	Lower	Upper
149	100		
167	31.4	23.2	34.8
279	6.8	4.1	6.1#



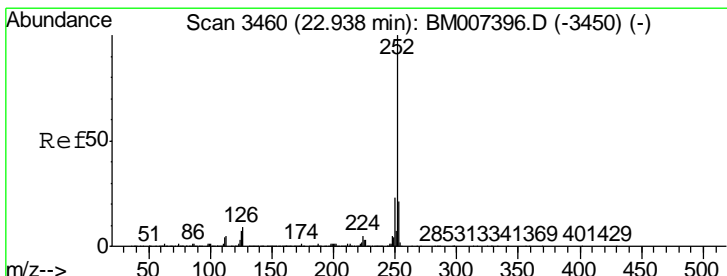
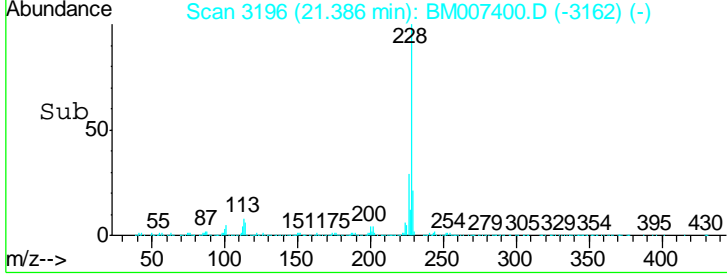
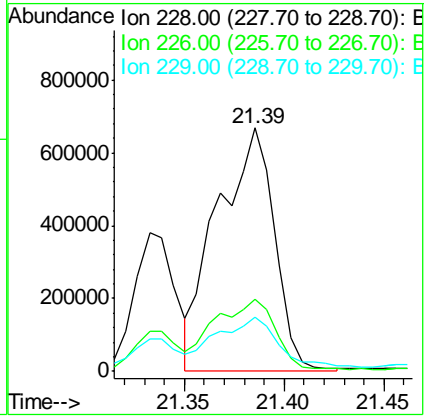
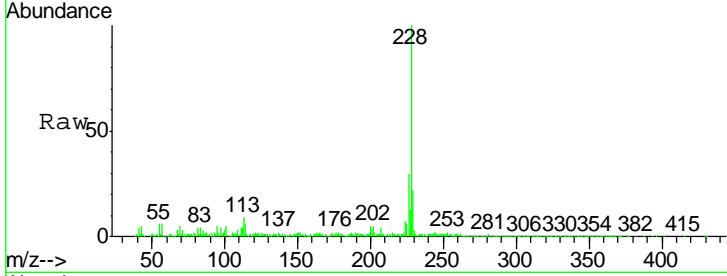


#82
 Chrysene
 Concen: 10.92 ng/ul m
 RT: 21.39 min Scan# 3196
 Delta R.T. 0.00 min
 Lab File: BM007400.D
 Acq: 03 Sep 2016 10:46

Instrument :
 BNA_M
 ClientSampled :
 BD393

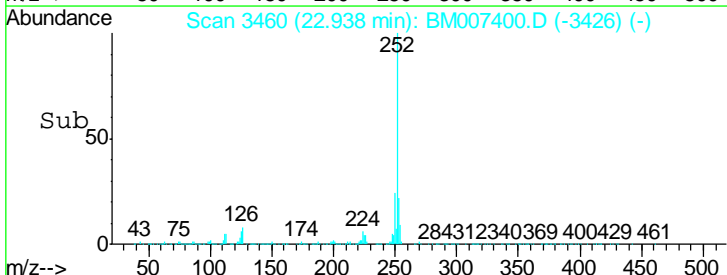
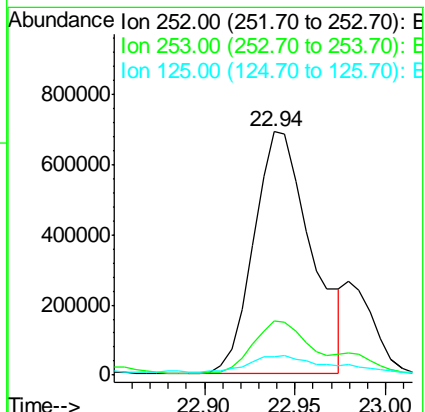
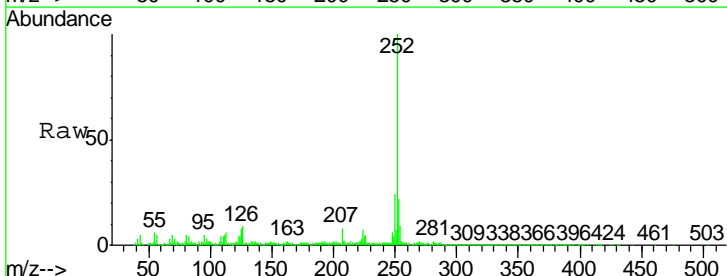
Tgt Ion	Resp	Lower	Upper
228	100		
226	29.8	23.4	35.2
229	22.1	15.5	23.3

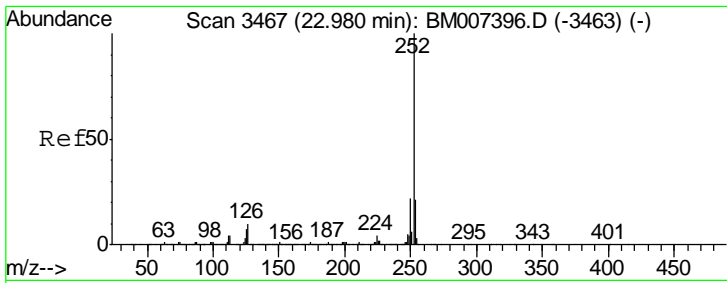
Manual Integrations
APPROVED
 sohil
 9/6/2016 1:16:36 PM



#85
 Benzo(b)fluoranthene
 Concen: 11.84 ng/ul
 RT: 22.94 min Scan# 3460
 Delta R.T. 0.00 min
 Lab File: BM007400.D
 Acq: 03 Sep 2016 10:46

Tgt Ion	Resp	Lower	Upper
252	100		
253	22.5	17.1	25.7
125	7.7	5.8	8.8





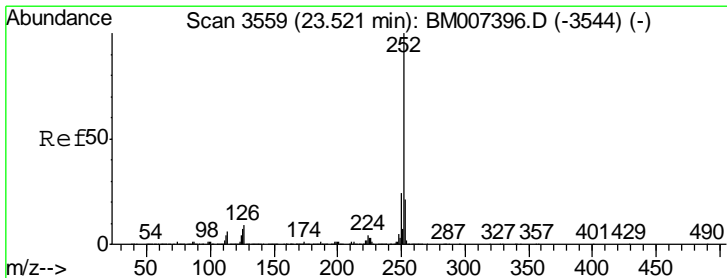
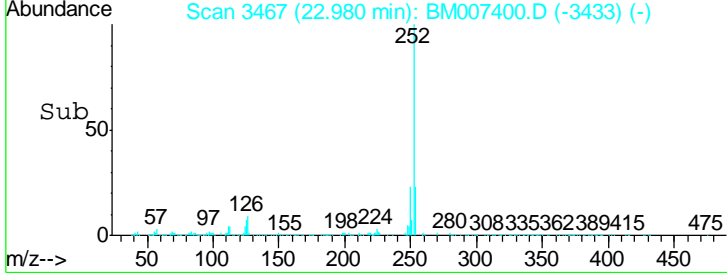
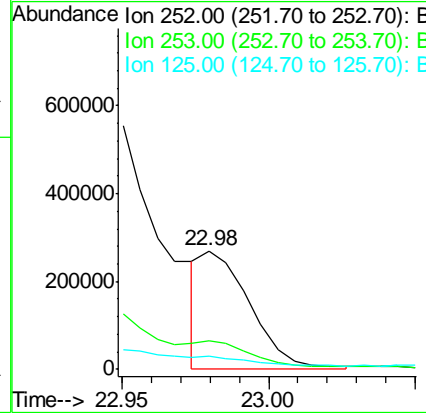
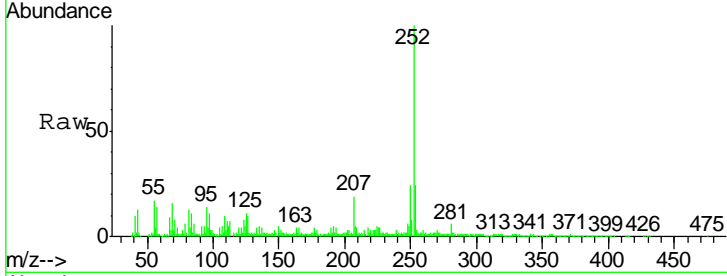
#86
 Benzo(k)fluoranthene
 Concen: 2.62 ng/ul m
 RT: 22.98 min Scan# 3467
 Delta R.T. 0.00 min
 Lab File: BM007400.D
 Acq: 03 Sep 2016 10:46

Instrument :
 BNA_M
 ClientSampled :
 BD393

Tgt Ion	Resp	Lower	Upper
252	100		
253	24.1	17.6	26.4
125	10.7	5.7	8.5#

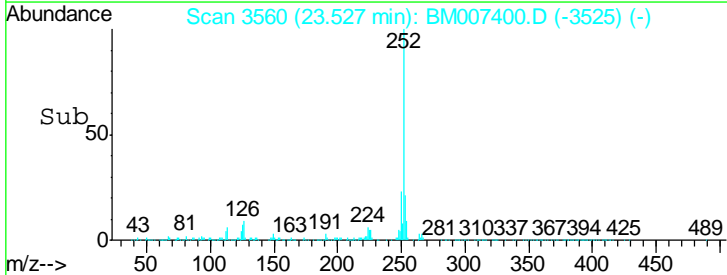
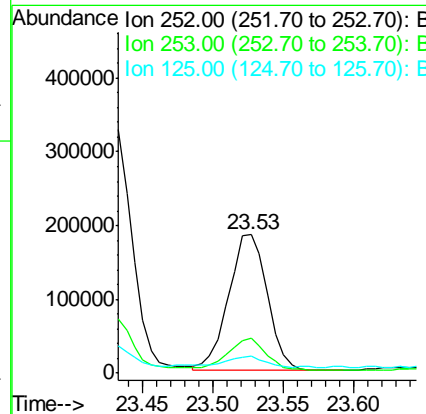
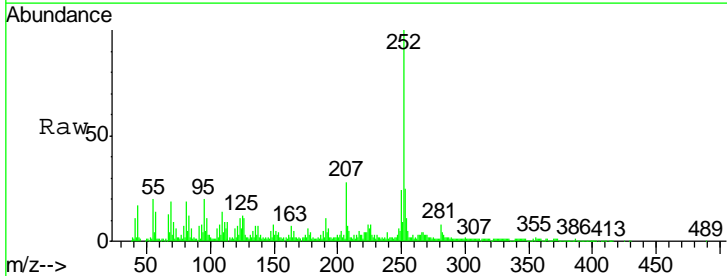
Manual Integrations
 APPROVED

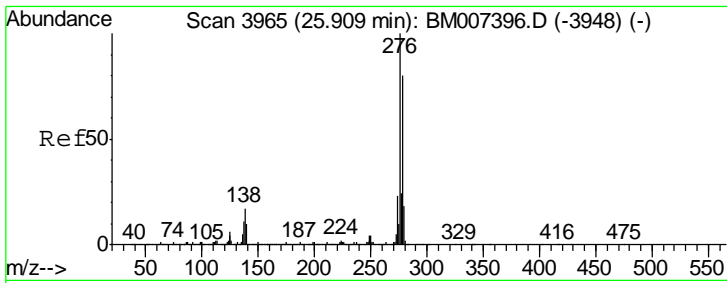
sohil
 9/6/2016 1:16:36 PM



#88
 Benzo(a)pyrene
 Concen: 2.87 ng/ul
 RT: 23.53 min Scan# 3560
 Delta R.T. 0.01 min
 Lab File: BM007400.D
 Acq: 03 Sep 2016 10:46

Tgt Ion	Resp	Lower	Upper
252	100		
253	24.8	17.7	26.5
125	12.0	6.6	9.8#





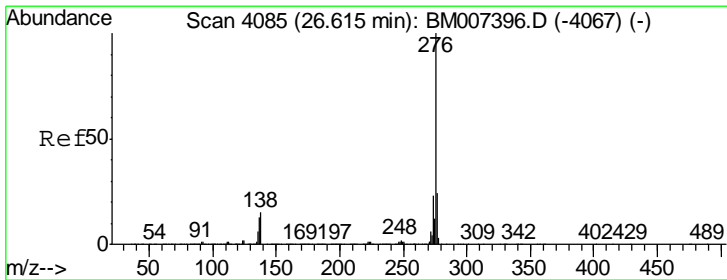
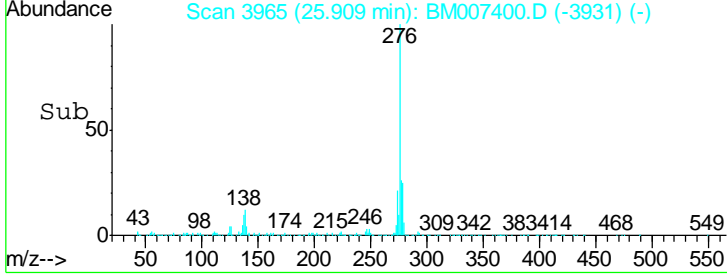
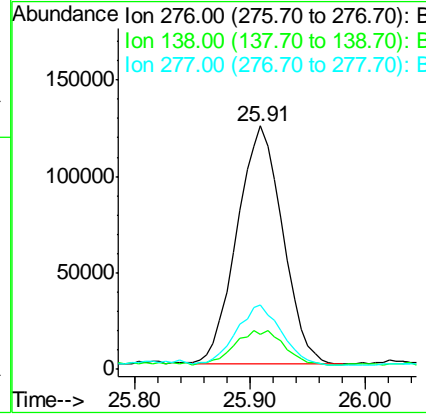
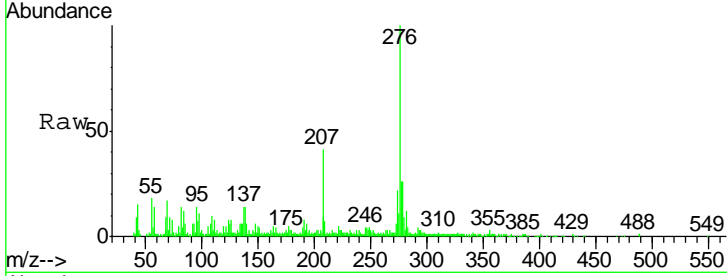
#89
 Indeno(1,2,3-cd)pyrene
 Concen: 2.26 ng/ul
 RT: 25.91 min Scan# 3965
 Delta R.T. 0.00 min
 Lab File: BM007400.D
 Acq: 03 Sep 2016 10:46

Instrument :
 BNA_M
 ClientSampled :
 BD393

Tgt Ion	Resp	Lower	Upper
276	340459		
138	14.4	13.9	20.9
277	26.4	20.1	30.1

Manual Integrations
 APPROVED

sohil
 9/6/2016 1:16:36 PM



#91
 Benzo(g,h,i)perylene
 Concen: 2.08 ng/ul
 RT: 26.61 min Scan# 4084
 Delta R.T. -0.01 min
 Lab File: BM007400.D
 Acq: 03 Sep 2016 10:46

Tgt Ion	Resp	Lower	Upper
276	266290		
138	17.7	13.5	20.3
277	24.4	19.3	28.9

